

# Exam Questions 201

TMOS Administration

<https://www.2passeasy.com/dumps/201/>



#### NEW QUESTION 1

Which three iRule events are likely to be seen in iRules designed to select a pool for load balancing? (Choose three.)

- A. CLIENT\_DATA
- B. SERVER\_DATA
- C. HTTP\_REQUEST
- D. HTTP\_RESPONSE
- E. CLIENT\_ACCEPTED
- F. SERVER\_SELECTED
- G. SERVER\_CONNECTED

**Answer:** ACE

#### NEW QUESTION 2

A BIG-IP Administrator uses backend servers to host multiple services per server. There are multiple virtual servers and pools defined, referencing the same backend servers.

Which load balancing algorithm is most appropriate to have an equal number of connections on each backend server?

- A. Least Connections (member)
- B. Least Connections (node)
- C. Predictive (member)
- D. Predictive (node)

**Answer:** B

#### Explanation:

The same set of servers provides multiple services, that is, using different ports to provide different services at the same time. The stem requirement is based on server connection balancing, not server + port, so it is node.

#### NEW QUESTION 3

A BIG-IP Administrator configures a Virtual Server to load balance traffic between 50 web servers for an e-commerce website. Traffic is being load balanced using the Least Connections (node) method.

The web server administrators report that customers are losing the contents from their shopping carts and are unable to complete their orders.

What should the BIG-IP Administrator do to resolve the issue?

- A. Change Default Persistence Profile setting to cookie
- B. Change Load Balancing method to Ratio (member)
- C. Change Default Persistence Profile setting to sipinfo
- D. Change Load Balancing method to Ratio (node)

**Answer:** A

#### NEW QUESTION 4

A virtual server is listening at 10.10.1.100:any and has the following iRule associated with it:

```
when CLIENT_ACCEPTED { if {[TCP::local_port] equals 80 } { pool pool1 } elseif {[TCP::local_port] equals 443} { pool pool2 } }
```

If a user connects to 10.10.1.100 and port 22, which pool will receive the request?

- A. pool1
- B. pool2
- C. Non
- D. The request will be dropped.
- E. Unknow
- F. The pool cannot be determined from the information provided.

**Answer:** D

#### NEW QUESTION 5

Some users who connect to a busy Virtual Server have connections reset by the BIG-IP system. Pool member resources are NOT a factor in this behavior. What is a possible cause for this behavior?

- A. The Connection Rate Limit is set too high
- B. The server SSL Profile has NOT been reconfigured.
- C. The Connection Limit is set too low.
- D. The Rewrite Profile has NOT been configured.

**Answer:** C

#### Explanation:

The topic explains that the connection reset behavior is caused by the vs configuration rather than the server resource problem. The answers B C are all configuration at the service forwarding level. If there is a problem with the configuration, it is all a problem rather than some users. Answer C's Connection Limit will cause a reset behavior when the connection reaches the threshold.

#### NEW QUESTION 6

A BIG-IP Administrator sees the following error message in /var/log/ltm diskmonitor: \*\*\*\*\*; Disk partition shared has less than 30\$ free

Which section of the Configuration Utility should the BIG-IP Administrator access to investigate this error message?

- A. Statistics > Analytics
- B. System > File Management
- C. Statistics > Module Statistics > System
- D. System > Disk Management

**Answer:** D

#### NEW QUESTION 7

A BIGJP Administrator needs to load a UCS file but must exclude the license file. How should the administrator perform this task?

- A. From the CLI with command U tmsh load /\$ys ucs <ucs filename> no-license
- B. From the GUI, select the UCS file, unchck the license box, and click restore
- C. From the CLI with command(tmsh)« tmsh load /sys ucs <ucs filename> no-license
- D. From the GUI, select the UCS file and click restore

**Answer:** A

#### NEW QUESTION 8

A site is load balancing to a pool of web servers. Which statement is true concerning BIG IP's ability to verify whether the web servers are functioning properly or not?

- A. Web server monitors can test the content of any page on the server.
- B. Web server monitors always verify the contents of the index.html page.
- C. Web server monitors can test whether the server's address is reachable, but cannot test a page's content.
- D. Web server monitors can test the content of static web pages, but cannot test pages that would require the web server to dynamically build content.

**Answer:** A

#### NEW QUESTION 9

Where is persistence mirroring configured?

- A. It is always enabled.
- B. It is part of a pool definition.
- C. It is part of a profile definition.
- D. It is part of a virtual server definition.

**Answer:** C

#### NEW QUESTION 10

A BIG-IP Administrator suspects that one of the BIG-IP device power supplies is experiencing power outages. Which log file should the BIG-IP Administrator check to verify the suspicion?

- A. /var /log/daemon.log
- B. /var/log/kern.log
- C. /var/log/ltn
- D. /var/log/audit

**Answer:** C

#### NEW QUESTION 10

A BIG-IP Administrator configures remote authentication and needs to make sure that users can still login even when the remote authentication server is unavailable.

Which action should the BIG-IP Administrators in the remote authentication configuration to meet this requirement?

- A. Set partition access to "All"
- B. Enable the Fallback to Local option
- C. Configure a remote role grove
- D. Configure a second remote user directory

**Answer:** B

#### NEW QUESTION 11

A site has six members in a pool. All of the servers have been designed, built, and configured with the same applications. It is known that each client's interactions vary significantly and can affect the performance of the servers. If traffic should be sent to all members on a regular basis, which loadbalancing mode is most effective if the goal is to maintain a relatively even load across all servers?

- A. Ratio
- B. Priority
- C. Observed
- D. Round Robin

**Answer:** C

#### NEW QUESTION 12

A set of servers is used for an FTP application as well as an HTTP website via separate BIG-IP Pools. The server support team reports that some servers are

receiving a lot more traffic than others.

Which Load Balancing Method should the BIG-IP Administrator apply to even out the connection count?

- A. Ratio (Member)
- B. Least Connections (Member)
- C. Least Connections (Node)
- D. Ratio (Node)

**Answer:** C

**Explanation:**

The connection is required to be balanced, and the unit is the server and the application port is the unit, so it is node.

**NEW QUESTION 16**

Refer to the exhibit.

Due to a change in application requirements, a BIG-IP Administrator needs to modify the configuration of a Virtual Server to include a Fallback Persistence Profile.

Which persistence profile type should the BIG-IP Administrator use for this purpose?

- A. SSL
- B. Hash
- C. Universal
- D. Source Address Affinity

**Answer:** D

**NEW QUESTION 18**

A BIG-IP Administrator is configuring an SSH Pool with five members.

Which Health Monitor should be applied to ensure that available pool members are monitored accordingly?

- A. https
- B. udp
- C. http
- D. tcp

**Answer:** D

**NEW QUESTION 20**

You have created a custom profile named TEST2. The parent profile of TEST2 is named TEST1. If additional changes are made to TEST1, what is the effect on TEST2?

- A. All changes to TEST1 are propagated to TEST2.
- B. Some of the changes to TEST1 may propagate to TEST2.
- C. Changes to TEST1 cannot affect TEST2 once TEST2 is saved.
- D. When TEST1 is changed, the administrator is prompted and can choose whether to propagate changes to TEST2.

**Answer:** B

**NEW QUESTION 23**

Which statement is true concerning SSL termination?

- A. A virtual server that has both ClientSSL and ServerSSL profiles can still support cookie persistence.
- B. Decrypting traffic at the BIG-IP allows the use of iRules for traffic management, but increases the load on the pool member.
- C. When any virtual server uses a ClientSSL profile, all SSL traffic sent to the BIG-IP is decrypted before it is forwarded to servers.
- D. If a virtual server has both a ClientSSL and ServerSSL profile, the pool members have less SSL processing than if the virtual server had only a ClientSSL profile.

**Answer:** A

**NEW QUESTION 28**

A BIG-IP Administrator recently deployed an application. Users are experiencing slow performance with the application on some remote networks.

Which two modifications can the BIG-IP Administrator make to address this issue? (Choose two)

- A. Apply dest\_addr profile to the Virtual Server
- B. Apply f5-tcp-wan profile to the Virtual Server
- C. Apply f5-tcp-lan profile to the Virtual Server
- D. Apply source\_addr profile to the Virtual Server
- E. Apply fasti\_4 profile to the Virtual Server

**Answer:** BC

**NEW QUESTION 30**

A BIG-IP Administrator needs to ensure that a pool member and down by the monitor the BIG-IP system sends existing connections to another pool member.

Which should the BIG-IP Administrator perform to meet this goal?

- A. Set Action on Service Down sing under the server configuration to reselect.
- B. Reconfigure the pool monitor members as UP.
- C. Enable mirroring within the persistence profile.

D. Set Action Service Down setting under the pool configuration to reselect.

**Answer:** D

#### NEW QUESTION 33

A BIG-IP Administrator finds the following log entry after a report of user issues connecting to a virtual server: 01010201: 2: Inet port exhaustion on 10.70.110.112 to 192.28.123.250:80 (proto 6)

How should the BIG-IP Administrator modify the SNAT pool that is associated with the virtual server?

- A. Remove the SNAT pool and apply SNAT Automap.
- B. Remove an IP address from the SNAT pool.
- C. Add an address to the SNAT pool.
- D. Increase the timeout of the SNAT addresses.

**Answer:** C

#### NEW QUESTION 37

The BIG-IP Administrator creates a custom iRule that fails to work as expected. Which F5 online resource should the administrator use to help resolve this issue?

- A. DevCentral
- B. Bug Tracker
- C. University
- D. Health

**Answer:** A

#### NEW QUESTION 42

A BIG-IP Administrator needs to restore an encrypted UCS archive from the command line using the TMSH utility. Which TMSH command should the BIG-IP Administrator use to accomplish this?

- A. load/sys ucs <filepath> passphrase <password>
- B. load/sys config file <filepath> passphrase <password>
- C. load/sys config file <filepath>
- D. load/sys ucs <filepath> no-license

**Answer:** A

#### NEW QUESTION 47

Which event is always triggered when a client initially connects to a virtual server configured with an HTTP profile?

- A. HTTP\_DATA
- B. CLIENT\_DATA
- C. HTTP\_REQUEST
- D. CLIENT\_ACCEPTED

**Answer:** D

#### NEW QUESTION 52

The BIG-IP appliance fails to boot. The BIG-IP Administrator needs to run the End User Diagnostics (EUD) utility to collect data to send to F5 Support. Where can the BIG-IP Administrator access this utility?

- A. Console Port
- B. Internal VLAN interface
- C. External VLAN interface
- D. Management Port

**Answer:** A

#### NEW QUESTION 55

A Standard Virtual Server configured for an application reports poor network performance. This application is accessed mainly from computers on the Internet. What should the BIG-IP Administrator configure on the Virtual Server to achieve better network performance?

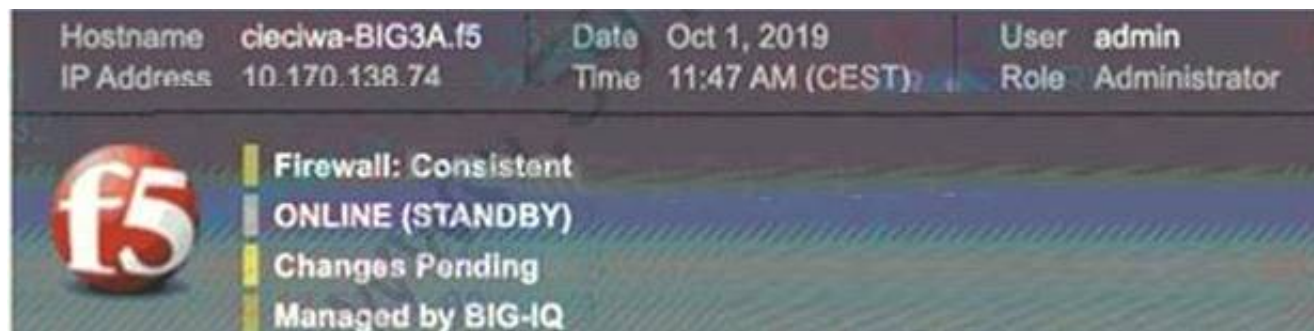
- A. Protocol Profile (Client) with f5-tcp-wan and Protocol Profile (Server) with f5-tcp-lan
- B. Protocol Profile (Client) with f5-tcp-lan
- C. Protocol Profile (Client) with f5-tcp-lan and Protocol Profile (Server) with f5-tcp-wan
- D. Protocol Profile (Client) with f5-tcp-optimized

**Answer:** A

#### NEW QUESTION 57

Refer to the exhibit.





The BIG-IP Administrator has modified an iRule on one device of an HA pair. The BIG-IP Administrator notices there is NO traffic on the BIG-IP device in which they are logged into.

What should the BIG-IP Administrator do to verify if the iRule works correctly?

- A. Push configuration from this device to the group and start to monitor traffic on this device
- B. Pull configuration to this device to the cluster and start to monitor traffic on this device
- C. Log in to the other device in the cluster, push configuration from it, and start to monitor traffic on that device
- D. Log in to the other device in the cluster, pull configuration to it, and start to monitor traffic on that device

**Answer: D**

**Explanation:**

The device in the picture is a standby machine, of course there is no traffic, you need to log in to the host, and then pull the configuration to the host.

**NEW QUESTION 58**

Refer to the exhibit.



A BIG-IP Administrator creates a new Virtual Server to load balance SSH traffic. Users are unable to log on to the servers. What should the BIG-IP Administrator do to resolve the issue?

- A. Set Protocol to UDP
- B. Set HTTP Profile to None
- C. Set Source Address to 10.1.1.2
- D. Set Destination Addresses/Mask to 0.0.0.0/0

**Answer: B**

**NEW QUESTION 63**

A virtual server at 10.10.1.100:80 has the rule listed below applied.

when HTTP\_REQUEST { if {[HTTP::uri] ends\_with "htm" } { pool pool1 } else if {[HTTP::uri] ends\_with "xt" } { pool pool2 }

If a user connects to http://10.10.1.100/foo.txt which pool will receive the request?

- A. pool1
- B. pool2
- C. Non
- D. The request will be dropped.
- E. Unknow
- F. The pool cannot be determined from the information provided.

**Answer: B**

**NEW QUESTION 68**

A BIG-IP Administrator finds the following log entry:

tmm tmm[7141]: 011e0002:4: sweeperjppdate: aggressive mode activated. Which action should the BIG-IP Administrator to mitigate this memory issue?

- A. Configure the redundant par to be active-active
- B. Decrease the TCP profile ide Timeout value
- C. increase the TCP profile ide Timeout value
- D. Configure the serve to use Connection Mirroring

**Answer: D**

#### NEW QUESTION 71

Monitors can be assigned to which three resources? (Choose three.)

- A. NATs
- B. pools
- C. iRules
- D. nodes
- E. SNATs
- F. pool members
- G. virtual servers

**Answer:** BDF

#### NEW QUESTION 72

A BIG-IP Administrator needs to remove a pool specific health monitor. There is a pool named Best Pool with two members, one named Best pool member and one named Best pool member2. In the Local Traffic section of the administrative GUI, which steps should the BIG-IP Administrator take to remove a pool level monitor?

- A. Pool > Pool List > Best Pool > Members > Health Monitors
- B. Nodes > Node List> Best \_pool\_member1 > Heath Monitors
- C. Monitors > Monitor Name> Instances
- D. Pool > Pool List> Best Pool > Health Monitors

**Answer:** D

#### NEW QUESTION 74

If a client's browser does not accept cookies, what occurs when the client connects to a virtual server using cookie persistence?

- A. The connection request is not processed.
- B. The connection request is sent to a pology server.
- C. The connection request is loadbalanced to an available pool member.
- D. The connection request is refused and the client is sent a "server not available" message.

**Answer:** C

#### NEW QUESTION 79

You have a pool of servers that need to be tested. All of the servers but one should be tested every 10 seconds, but one is slower and should only be tested every 20 seconds. How do you proceed?

- A. It cannot be don
- B. All monitors test every five seconds.
- C. It can be done, but will require assigning monitors to each pool member.
- D. It cannot be don
- E. All of the members of a pool must be tested at the same frequency.
- F. It can be done by assigning one monitor to the pool and a different monitor to the slower pool member.

**Answer:** D

#### NEW QUESTION 82

A node is a member of various pools and hosts different web applications. If a web application is unavailable, the BIG-IP appliance needs to mark the pool member down for that application pool. What should a BIG-IP Administrator deploy at the pool level to accomplish this?

- A. A UDP monitor with a custom interval/timeout
- B. A combination of ICMP + TCP monitor
- C. An HTTP monitor with custom send/receive strings
- D. A TCP monitor with a custom interval/timeout

**Answer:** C

#### Explanation:

Requiring all traffic to be HTTPS access requires HTTP requests to be redirected directly to HTTPS.

#### NEW QUESTION 87

A BIG-IP Administrator makes a configuration change to the BIG-IP device. Which file logs the message regarding the configuration change?

- A. /var/log/messages
- B. /var/log/audit
- C. /var/log/user.log
- D. /var/log/secure

**Answer:** B

#### Explanation:

About audit logging

Audit logging is an optional feature that togs messages whenever a BIG-IP® system object, such as a virtual server or a load balancing pool, is confined (that is. created, modified, or deleted). The BiGIP system logs the messages for these auditing events in the file /var/log'audit

There are three ways that objects can be configured

- By user action
- By system action
- By loading configuration data

Whenever an object is configured in one of these ways, the BIG-IP system logs a message to the audit log

#### NEW QUESTION 88

A BIG-IP Administrator needs to check the memory utilization on a BIG-IP system. Which two methods can the UIG IP Administrator use? (Choose two.)

- A. Run the tmsh show/sys memory command
- B. Run the tmsh show/sys traffic command
- C. Go to Statistics > Module Statistics > Traffic Summary in the configuration utility
- D. Go to Statistics > Module Statistics > Memory in the configuration utility
- E. Go to System > Disk Management in the configuration utility

**Answer:** AD

#### NEW QUESTION 93

A BIG-IP Administrator reviews the Plane CPU Usage performance chart and discovers a high percentage of Control Plane utilization. Which type of traffic does this indicate a higher usage of?

- A. Administrative
- B. Tunnel
- C. Accelerated ,
- D. Application

**Answer:** A

#### NEW QUESTION 98

A BIG-IP Administrator needs to make sure that the automatic update check feature works properly. What must the administrator configure on the BIG-IP system?

- A. Update Check Schedule
- B. NTP servers
- C. DNS name servers
- D. SMTP servers

**Answer:** A

#### NEW QUESTION 102

On the VCMP system, a BIG-IP host administrator imports a new ISO image into the host's /shared/images folder. The new ISO images that reside on the vCMP host are available for installation on the guest. How should the BIG-IP Administrator install one image from within the guest?

- A. Install the new software on the host and wait for it to automatically be installed on all guests.
- B. Run the following command on guesttmsh install sys software block-device-image image\_name volume < volume\_name>
- C. Run the following command on guesttmsh install sys software image image\_name volume < volume\_name>
- D. Run the following command on hosttmsh install sys software block-device-image image\_name volume < volume\_name>

**Answer:** D

#### NEW QUESTION 104

An LTM device has a virtual server mapped to www5f.com with a pool assigned. The objects are defined as follows:

Virtual server. Destination 192.168.245.100.443 netmask 255.255.255.0 Persistence: Source address persistence netmask 255.0.0.0 SNAT:AutoMap Profiles: HnP/TCP

How should the BIG-IP Administrator modify the persistence profile so that each unique IP address creates a persistence record?

- A. netmask 0.0.0.0
- B. netmask 255.255.255.255
- C. netmask 255.255.0.0
- D. netmask 255.256.255.0

**Answer:** B

#### NEW QUESTION 109

An ecommerce company is experiencing latency issues with online shops during Black Friday's peak season. The BIG-IP Administrator detects an overall high CPU load on the BIG-IP device and wants to move the top utilized Virtual Servers to a dedicated BIG-IP device.

Where should the BIG-IP Administrator determine the problematic Virtual Servers?

- A. System > Platform
- B. Local Traffic > Virtual Servers > Virtual Server List
- C. Local Traffic > Network Map
- D. Statistics > Module Statistics > Local Traffic > Virtual Servers

**Answer:** D

#### NEW QUESTION 114

When can a single virtual server be associated with multiple profiles?



- A. Neve
- B. Each virtual server has a maximum of one profile.
- C. Ofte
- D. Profiles work on different layers and combining profiles is common.
- E. Rarel
- F. One combination, using both the TCP and HTTP profile does occur, but it is the exception.
- G. Unlimite
- H. Profiles can work together in any combination to ensure that all traffic types are supported in a given virtual server.

**Answer:** B

#### NEW QUESTION 118

The interface 1.1 of the BIG-IP device has been connected to a link dedicated to traffic on VLAN 120. What should the BIG-IP Administrator do to receive traffic from the VLAN?

- A. Create a new VLAN object and set Customer Tag to 120
- B. Create a new VLAN object and assign the interface 1.1 untagged
- C. Create a new trunk object with interface 1.1 assigned
- D. Create a new trunk object and assign it to the VLAN

**Answer:** B

#### NEW QUESTION 121

How is MAC masquerading configured?

- A. Specify the desired MAC address for each VLAN for which you want this feature enabled.
- B. Specify the desired MAC address for each selfIP address for which you want this feature enabled.
- C. Specify the desired MAC address for each VLAN on the active system and synchronize the systems.
- D. Specify the desired MAC address for each floating selfIP address for which you want this feature enabled.

**Answer:** A

#### NEW QUESTION 122

A BIG-IP Administrator opens a case with F5 Support. The support engineer requests the BIG-IP appliance chassis serial number. Which TMSH command will provide this information?

- A. . list /sys software
- B. show /sys version
- C. list/sys diags
- D. show /sys hardware

**Answer:** D

#### NEW QUESTION 126

Which three properties can be assigned to nodes? (Choose three.)

- A. ratio values
- B. priority values
- C. health monitors
- D. connection limits
- E. loadbalancing mode

**Answer:** ACD

#### NEW QUESTION 131

A BIG-IP system has the following configuration:

- \* SNAT is set to Auto Map
- \* There are two VLANs internal and external
- \* Default route is pointed to the gateway on external VLAN
- \* Self P for internal VLAN is 192.1.1.2
- \* Self IP for external VLAN is 192.1.2.2
- \* Floating IP addresses for internal VLAN is 192.1.1.1
- \* Floating IP addresses for external VLAN is 192.1.2.1
- \* The Virtual Server IP address is 192.1.1.100

Which IP address does the BIG-IP system use first when traffic reaches the servers on the internal VLAN?

- A. 192.1.1.100
- B. 192.1.2.2
- C. 192.1.1.1
- D. 192.1.2.1

**Answer:** C

#### NEW QUESTION 133

The ICMP monitor has been assigned to all nodes. In addition, all pools have been assigned custom monitors. The pool is marked available. If a pool is marked available (green) which situation is sufficient to cause this?

- A. All of the pool member nodes are responding to the ICMP monitor as expected.
- B. Less than 50% of the pool member nodes responded to the ICMP echo request.
- C. All of the members of the pool have had their content updated recently and their responses no longer match the monitor.
- D. Over 25% of the pool members have had their content updated and it no longer matches the receive rule of the custom monitor.
- E. The other respond as expected.

**Answer: D**

#### NEW QUESTION 137

What should the BIG-IP Administrator provide when opening a new ticket with F5 Support?

- A. bigip.license file
- B. QKViewfile
- C. Device root password
- D. SSL private keys

**Answer: B**

#### NEW QUESTION 141

A user wants to use the iHealth Upgrade Advisor to determine any issues with upgrading TMOS from 13.0 to 13.1. Where can the user generate the QKView to upload to iHealth?

- A. System > Software Management
- B. System > Archives
- C. System > Configuration
- D. System > Support

**Answer: D**

#### NEW QUESTION 143

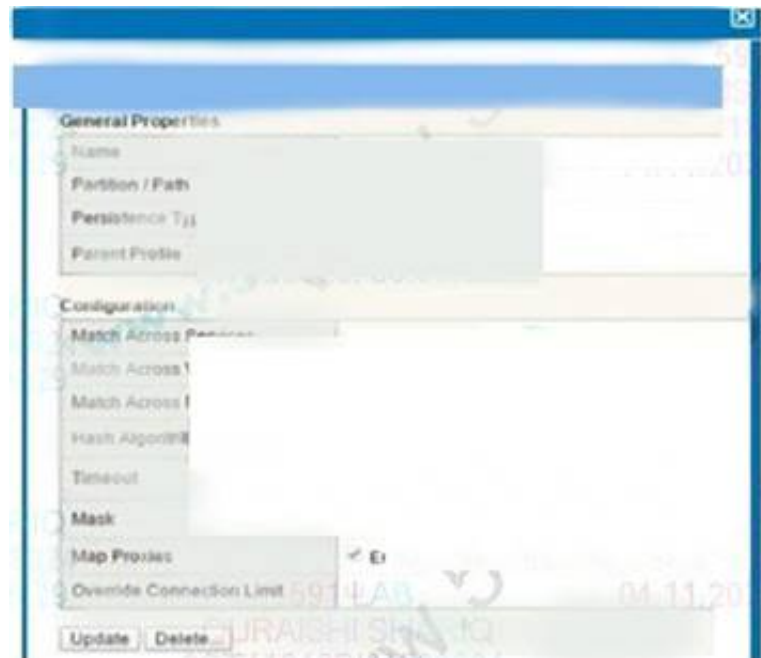
A BIG-IP Administrator uses a device group to share the workload and needs to perform service on a BIG-IP device currently active for a traffic group. The administrator needs to enable the traffic group to run on another BIG-IP device in the device group. What should the administrator do to meet the requirement?

- A. Create a new Traffic Group and then fail to Standby Unit
- B. Select Traffic Group and then select Failover
- C. Select Traffic Group and then select Force to Standby
- D. Select Traffic Group on Primary Unit and then select Demote

**Answer: C**

#### NEW QUESTION 147

Refer to the exhibit.



How long will the persistence record remain in the table?

- A. 180 seconds after the last packet
- B. 180 seconds after the initial table entry
- C. 300 seconds after the initial table entry
- D. 300 seconds after the last packet

**Answer: D**

#### NEW QUESTION 149

You need to terminate client SSL traffic at the BIG-IP and also to persist client traffic to the same pool member based on a BIG IP supplied cookie. Which four are profiles that would normally be included in the virtual server's definition? (Choose four.)

- A. TCP
- B. HTTP
- C. HTTPS
- D. ClientSSL

- E. ServerSSL
- F. CookieBased Persistence

**Answer:** ABDF

#### NEW QUESTION 150

Which is an advantage of terminating SSL communication at the BIGIP rather than the ultimate web server?

- A. Terminating SSL at the BIG-IP can eliminate SSL processing at the web servers.
- B. Terminating SSL at IP the eliminates BIG all unencrypted traffic from the internal network.
- C. Terminating SSL at the BIG-IP eliminates the need to purchase SSL certificates from a certificate authority.
- D. Terminating SSL at the BIG-IP eliminates the need to use SSL acceleration hardware anywhere in the network.

**Answer:** A

#### NEW QUESTION 151

How should a BIG-IP Administrator persistent sessions from being sent to a pool member so that the server administrator can perform maintenance?

- A. force the pool member offline
- B. disable the pool member
- C. add an additional monitor to the pool
- D. disable the virtual server

**Answer:** A

#### NEW QUESTION 155

In the BIG-IP Configuration Utility, a user requests a single screen view to determine the status of all Virtual Servers and associated pool members, as well as any iRules in use. Where should the BIG-IP Administrator instruct the user to find this view?

- A. Local Traffic > Monitors
- B. Local Traffic > Virtual Servers
- C. Local Traffic > Network Map
- D. Statistics

**Answer:** C

#### Explanation:

Network Map can display vs and its associated pool, pool member, and irule, can be retrieved, and can be quickly linked.

#### NEW QUESTION 160

A BIG-IP Administrator is making adjustments to an iRule and needs to identify which of the 235 virtual server configured on the BIG-IP device will be affected.

How should the administrator obtain this information in an effective way?

- A. Local Traffic > Virtual Server
- B. Local traffic Pools
- C. LOCAL Traffic > Network Map
- D. Local traffic > Rules

**Answer:** C

#### NEW QUESTION 164

A BIG-IP Administrator is performing maintenance on the active BIG-IP device of an HA pair. The BIG-IP Administrator needs to minimize traffic disruptions. What should the BIG-IP Administrator do to start the maintenance activity?

- A. Reboot the BIG-IP device.
- B. Move resources to a new Traffic Group.
- C. Force the BIG-IP device to standby.
- D. Disable switch ports of the BIG-IP device.

**Answer:** C

#### NEW QUESTION 168

Assuming there are open connections through an active system's NAT and a fail over occurs, by default, what happens to those connections?

- A. All open connections will be lost.
- B. All open connections will be maintained.
- C. The "Mirror" option must be chosen on the NAT and the setting synchronized prior to the connection establishment.
- D. Longlived connections such as Telnet and FTP will be maintained while shortlived connections such as HTTP will be lost.
- E. All open connections are lost, but new connections are initiated by the newly active BIG IP, resulting in minimal client downtime.

**Answer:** B

#### NEW QUESTION 172

The BIG-IP Administrator needs to ensure the correct health monitor is being used for a new HTTP pool named P\_example.

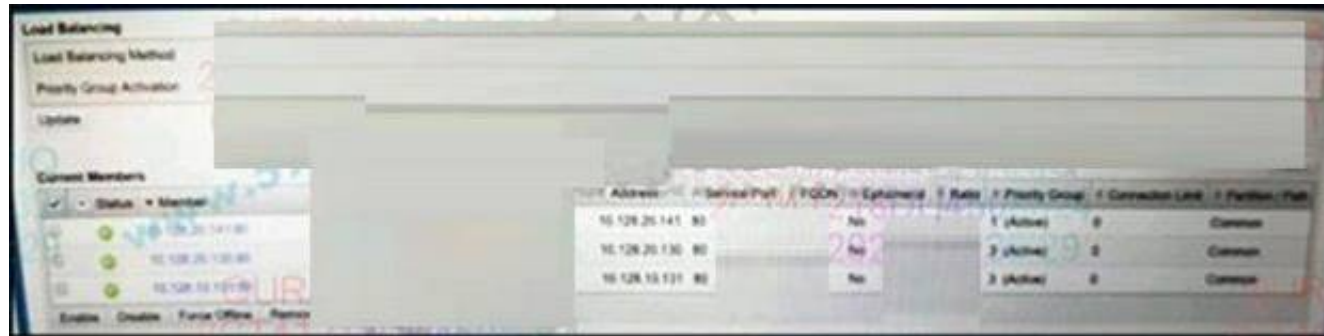
Where should the BIG-IP Administrator validate these settings in the Configuration Utility?

- A. Local Traffic > Nodes > Default Monitor
- B. Local Traffic > Profiles > Services > HTTP > http
- C. Local Traffic > Monitors > http
- D. Local Traffic > Pools > P\_ example

**Answer: D**

#### NEW QUESTION 174

Refer to the exhibit.



Address	Service Port	TCPON	Enabled	Rate	Priority Group	Connected Link	Partition Path
10.128.20.141	80	No	No	1 (Active)	0	Common	
10.128.20.130	80	No	No	2 (Active)	0	Common	
10.128.10.131	80	No	No	3 (Active)	0	Common	

How are new connections load balanced?

- A. To the first two members listed with the same priority group
- B. To the pool member with the least number of connections
- C. To the pool member with a high priority group value defined
- D. To the pool member with a low priority group value defined

**Answer: B**

#### NEW QUESTION 176

A BIG-IP Administrator needs to apply a health monitor for a pool of database servers named DB\_Pool that uses TCP port 1521. Where should the BIG-IP Administrator apply this monitor?

- A. Local Traffic > Profiles » Protocol > TCP
- B. Local Traffic > Nodes > Default Monitor
- C. Local Traffic > Pools > De Pool > Members
- D. Local Traffic > Pools > DB Pool > Properties

**Answer: D**

#### NEW QUESTION 178

A user needs to determine known security vulnerabilities on an existing BIG-IP appliance and how to remediate these vulnerabilities. Which action should the BIG-IP Administrator recommend?

- A. Verify the TMOS version and review the release notes
- B. Create a UCS archive and upload to Health
- C. Create a UCS archive and open an F5 Support request
- D. Generate a view and upload to Heath

**Answer: D**

#### NEW QUESTION 179

Which method is recommended for creating a new user from the CLI?

- A. Run `f5adduser username` then `f5passwd username` from bash or tmsh
- B. Run `tmsh create auth user username prompt for password` from bash
- C. edit `bigip.conf` to add the new user and the user's clear-text password
- D. Run `useradd username` then `passwd username` from bash tmsh

**Answer: B**

#### NEW QUESTION 184

The BIG-IP Administrator configures an HTTP monitor with a specific receive string. The status is marked 'down'. Which tool should the administrator use to identify the problem?

- A. Ping
- B. Health
- C. tcpdump
- D. ifconfig

**Answer: C**

#### NEW QUESTION 185

Refer to the exhibit



Name	IP Address	Port	Action
fwd_8080_vs	any	8080	Forwarding (IP) Edit
fwd_vs	any	0 (Any)	Forwarding (IP) Edit
host_8080_vs	1.1.1.0/24	8080	Standard Edit
host_vs	1.1.1.1	0 (Any)	Standard Edit

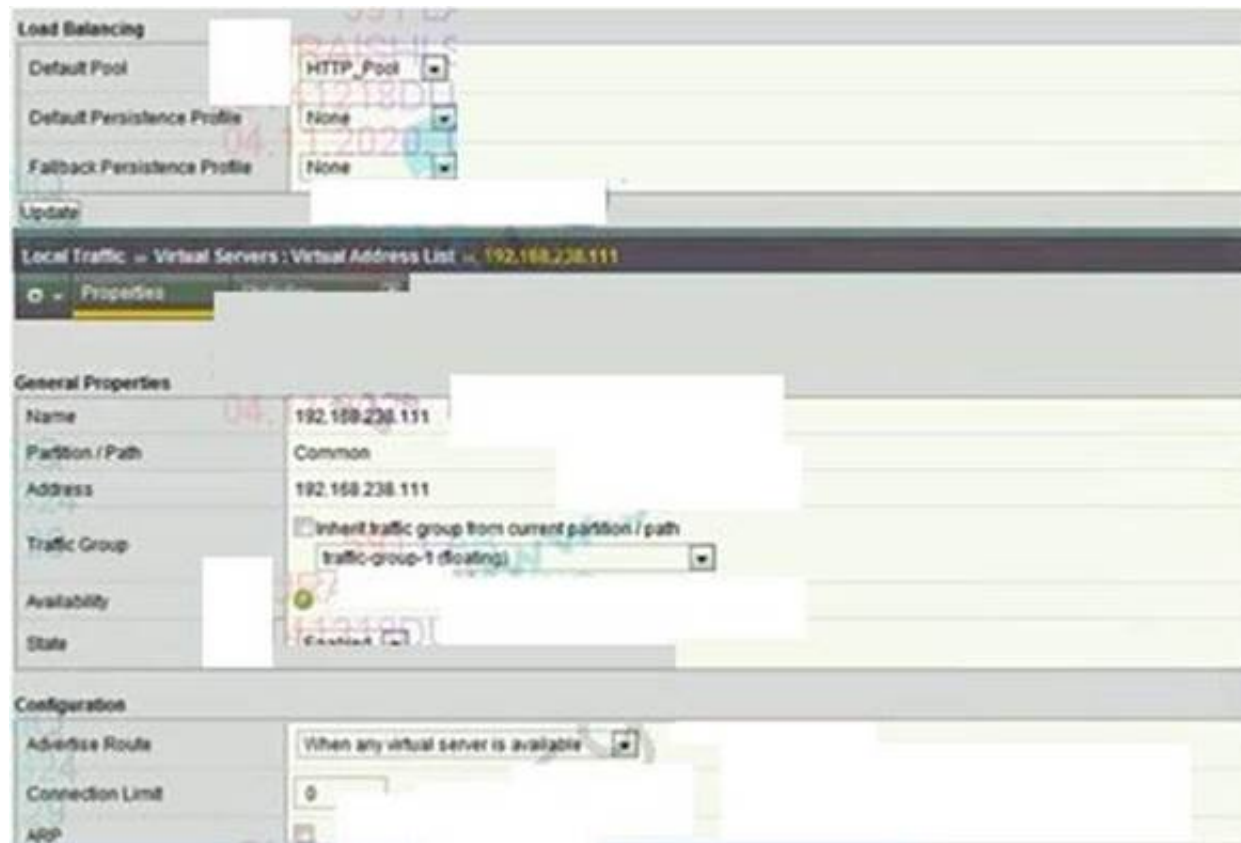
A connection is being established to IP 1.1.1.1 on port 8080. Which virtual server will handle the connection?

- A. fwd\_8080\_vs
- B. host\_vs
- C. host\_8080\_VS
- D. fwdvs

Answer: B

#### NEW QUESTION 187

Refer to the exhibit.



An LTM device has a virtual server mapped to www.f5.com. Users report that when they connect to /resources/201.1.2h.l\_l.com they are unable to receive content. What is the likely cause of the issue?

- A. The pool associated with the virtual server does not have priority group activation enabled.
- B. The virtual address does not have ARP enabled.
- C. The virtual address does not have route advertising enabled.
- D. The pool associated with the virtual server is failing its health check.

Answer: B

#### NEW QUESTION 189

Assuming other failover settings are at their default state, what would occur if the failover cable were to be disconnected for five seconds and then reconnected?

- A. As long as network communication is not lost, no change will occur.
- B. Nothin
- C. Failover due to loss of voltage will not occur if the voltage is lost for less than ten seconds.
- D. When the cable is disconnected, both systems will become activ
- E. When the voltage is restored, unit two will revert to standby mode.
- F. When the cable is disconnected, both systems will become activ
- G. When the voltage is restored, both systems will maintain active mode.

Answer: C

#### NEW QUESTION 190

Which two statements are true concerning the default communication between a redundant pair of BIG-IP systems? (Choose two.)

- A. Synchronization occurs via a TCP connection using ports 683 and 684.
- B. Connection mirroring data is shared via a TCP connection using port 1028.
- C. Persistence mirroring data is shared via a TCP connection using port 1028.
- D. Connection mirroring data is shared through the serial fail over cable unless network failover is enabled.

Answer: BC

#### NEW QUESTION 193

A BIG-IP Administrator needs to modify a virtual server that web offload web traffic compression tasks from the target server. Which two profiles must the BIG-IP Administrator apply to a virtual server to enable compression? (Choose two)



- A. Server SSL profile
- B. Stream profile
- C. Persistence profile
- D. HTP profile
- E. Compression profile

**Answer:** DE

#### NEW QUESTION 194

Which process or system can be monitored by the BIG-IP system and used as a failover trigger in a redundant pair configuration?

- A. bandwidth utilization
- B. duplicate IP address
- C. CPU utilization percentage
- D. VLAN communication ability

**Answer:** D

#### NEW QUESTION 199

A BIG-IP Administrator assigns the default http health monitor to a pool that has three members listening on port 80. When the administrator connects to each pool member via the CURL utility, two of the members respond with a status of 404 Not Found while the third responds with 200 OK. What will the pool show for member availability?

- A. All members offline.
- B. Two members offline and one member online.
- C. Two members online and one member offline.
- D. All members online.

**Answer:** D

#### NEW QUESTION 200

A BIG-IP Administrator is creating a new Trunk on the BIG-IP device. What objects should be added to the new Trunk being created?

- A. Interfaces
- B. Network routes
- C. VLANs
- D. IP addresses

**Answer:** A

#### Explanation:

trunk is a portchannel, you need to add a physical interface.

#### NEW QUESTION 201

During a high-demand traffic event, the BIG-IP Administrator needs to limit the number of new connections per second allowed to a Virtual Server. What should the administrator apply to accomplish this task?

- A. An HTTP Compression profile to the Virtual Server
- B. A connection rate limit to the Virtual Server
- C. A connection limit to the Virtual Server
- D. A OneConnect profile to the Virtual Server

**Answer:** B

#### NEW QUESTION 205

A BIG-IP Administrator needs to find which modules have been licensed for use on the BIG-IP system. In which section of the Configuration Utility can the BIG-IP Administrator find this information?

- A. System > Services
- B. System > Resource Provisioning
- C. System > Platform
- D. System > Support

**Answer:** B

#### NEW QUESTION 210

Refer to the exhibit.

Filesystem	Size	Used	Avail	Use%	Mounted on
/dev/md4	427M	427M	0	100%	/
none	16G	2.3M	16G	1%	/dev/shm
/dev/md6	3.2G	78M	2.9G	3%	/config
/dev/md5	4.0G	3.1G	696M	82%	/usr
/dev/md7	3.0G	663M	2.2G	24%	/var
/dev/md1	30G	7.6G	21G	27%	/shared
/dev/md2	6.9G	191M	6.4G	3%	/var/log
none	16G	51M	16G	1%	/shared/rrd.1.2
none	16G	21M	16G	1%	/var/tmstat
none	16G	1.6M	16G	1%	/var/run
prompt	4.0M	28K	4.0M	1%	/var/prompt
none	16G	0	16G	0%	/var/loipc

The BIG-IP Administrator is investigating disk utilization on the BIG-IP device. What should the BIG-IP Administrator check next?

- A. Large files on the / file system
- B. Results from the EUD test
- C. Results from the platform diagnostics test
- D. Large files on /usr file system

**Answer:** A

#### NEW QUESTION 212

Refer to the exhibit.

Which two pool members should be chosen for a new connection? (Choose two.)

- A. 172.16.15.9.80
- B. 172.16.15.4.80
- C. 172.10.15.2.80
- D. 172.16.15.1.80
- E. 172.16.15.7.80

**Answer:** BE

#### NEW QUESTION 215

A virtual server is configured to offload SSL from a pool of backend servers. When users connect to the virtual server, they successfully establish an SSL connection but no content is displayed. A packet trace performed on the server shows that the server receives and responds to the request. What should a BIG-IP Administrator do to resolve the problem?

- A. enable Server SSL profile
- B. disable Server SSL profile
- C. disable SNAT
- D. enable SNAT

**Answer:** B

#### NEW QUESTION 219

A custom HTTP monitor is failing to a pool member 10.10.3.75:8080 that serves up www.example.com. A ping works to the pool member address.

The SEND string that the monitor is using is: GET/HTTP/I.I/r/n/Host.www.example.com/r/n/Connection Close/r/n/r/n

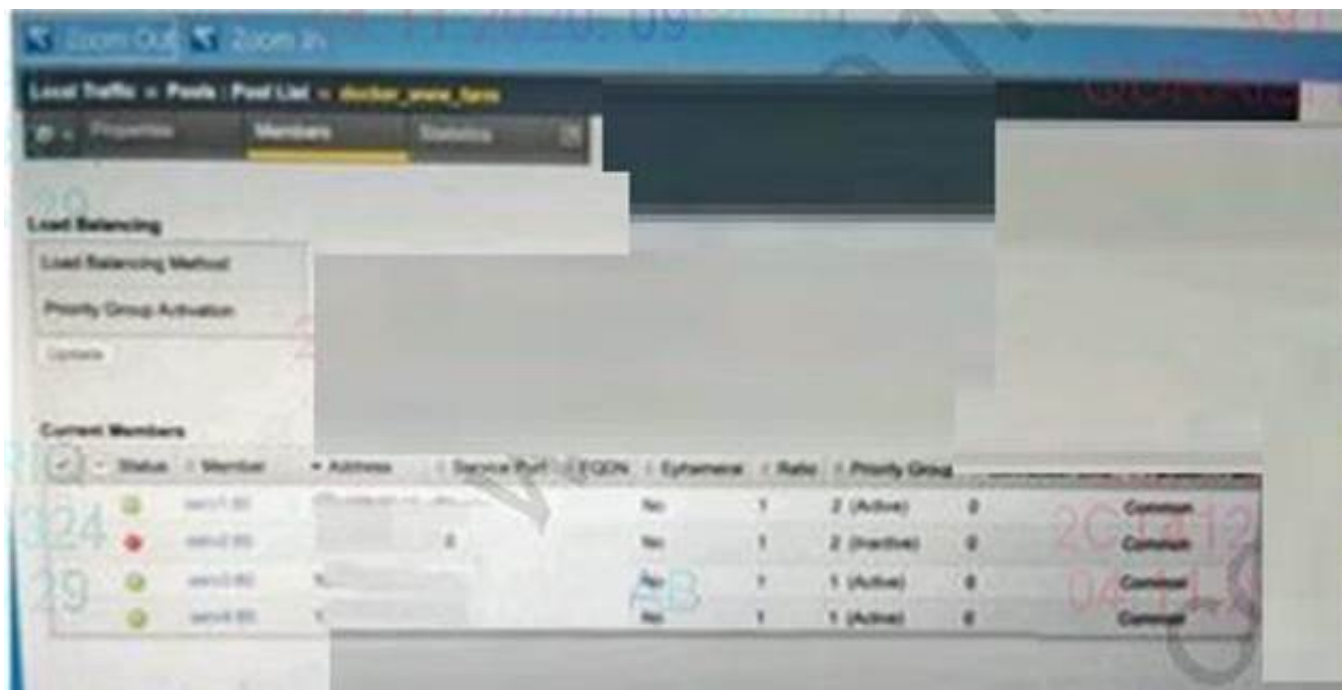
Which CLI tool syntax will show that the web server returns the correct HTTP response?

- A. curlhttp://10.10.10.3.75:8080/www.example.com/index.html
- B. curl-header 'Host:www.example.com' http://10.10.3.75:8080/
- C. tracepath 'http://www.example.com:80
- D. tracepath 10.10.3.75:8080 GET /index

**Answer:** B

#### NEW QUESTION 224

Refer to the exhibit.



Which Pool Members are receiving traffic?

- A. Serv1, serv2, serv3, serv4
- B. serv1, serv3
- C. serv1, serv3, serv4
- D. serv1

**Answer: C**

#### NEW QUESTION 229

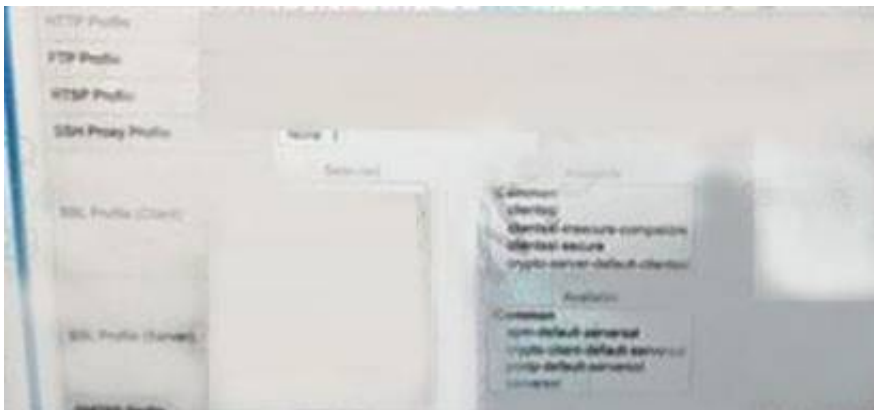
A BIG-IP Administrator configures a node with a standard icmp Health Monitor. The Node shows as DOWN although the Backend Server is configured to answer ICMP requests. Which step should the administrator take next to find the root cause of this issue?

- A. Run a curl Run a qkview
- B. Run a qkview
- C. Runatcpdump
- D. Runanssldump

**Answer: C**

#### NEW QUESTION 231

Refer to the exhibit.



A BIG-IP Administrator configures a Virtual Server to handle HTTPS traffic. Users report that the application is NOT working. Which actional configuration is regard to resolve this issue?

- A. Configure SSL Profile (Client)
- B. Configure Protocol Profile (Server)
- C. Configure Service Profile HTTP
- D. Configure SSL Profile (Server)

**Answer: A**

#### NEW QUESTION 233

Which action will take place when a failover trigger is detected by the active system?

- A. The active device will take the action specified for the failure.
- B. The standby device also detects the failure and assumes the active role.
- C. The active device will wait for all connections to terminate and then failover.
- D. The standby device will begin processing virtual servers that have failed, but the active device will continue servicing the functional virtual servers.

**Answer: A**

#### NEW QUESTION 234

Assume a virtual server is configured with a ClientSSL profile. What would the result be if the virtual server's destination port were not 443?

- A. SSL termination could not be performed if the virtual server's port was not port 443.
- B. Virtual servers with a ClientSSL profile are always configured with a destination port of 443.

- C. As long as client traffic was directed to the alternate port, the virtual server would work as intended.
- D. Since the virtual server is associated with a ClientSSL profile, it will always process traffic sent to port 443.

**Answer:** C

#### NEW QUESTION 239

A BIG-IP Administrator needs to restore a UCS file to an F5 device using the Configuration Utility. Which section of the Configuration Utility should the BIG-IP Administrator access to perform this task?

- A. Local Traffic > Virtual Servers
- B. Local Traffic > Policies
- C. System > Archives
- D. System > Configuration

**Answer:** C

#### NEW QUESTION 241

Refer to the exhibit. The BIG-IP Administrator needs to avoid overloading any of the Pool Members with connections, when they become active. What should the BIG-IP Administrator configure to meet this requirement?

- A. Different Ratio for each member
- B. Same Priority Group to each member
- C. Action On Service Down to Reselect
- D. Slow Ramp Time to the Pool

**Answer:** D

#### NEW QUESTION 242

The incoming client IP address is 205.12.45.52. The last five connections have been sent to members C, D, A, B, B. Given the virtual server and pool definitions and the statistics shown in the graphic, which member will be used for the next connection?

- A. 10.10.20.1:80
- B. 10.10.20.2:80
- C. 10.10.20.3:80
- D. 10.10.20.4:80
- E. 10.10.20.5:80

**Answer:** A

#### NEW QUESTION 244

A BIG-IP Administrator needs to configure the BIG-IP system to perform load balancing for FTP servers running passive mode FTP. How should the administrator configure the Virtual Server to perform this load balancing?

- A. A Standard Virtual Server + FTP profile
- B. A Forwarding Virtual Server
- C. A Performance Layer 4 Virtual Server + FTP profile
- D. A Message Routing Virtual Server

**Answer:** A

#### NEW QUESTION 247

The BIG-IP Administrator needs to perform a BIG-IP device upgrade to the latest version of TMOS. Where can the administrator obtain F5 documentation on upgrade requirements?

- A. iHealth
- B. Network > Interfaces
- C. Local Traffic > Pools
- D. AsKFS
- E. Local Traffic > Virtual Servers

**Answer:** C

#### NEW QUESTION 249

A BIG-IP Administrator is configuring a pool with members who have differing capabilities. Connections to pool members must be load balanced appropriately. Which load balancing method should the BIG-IP Administrator use?

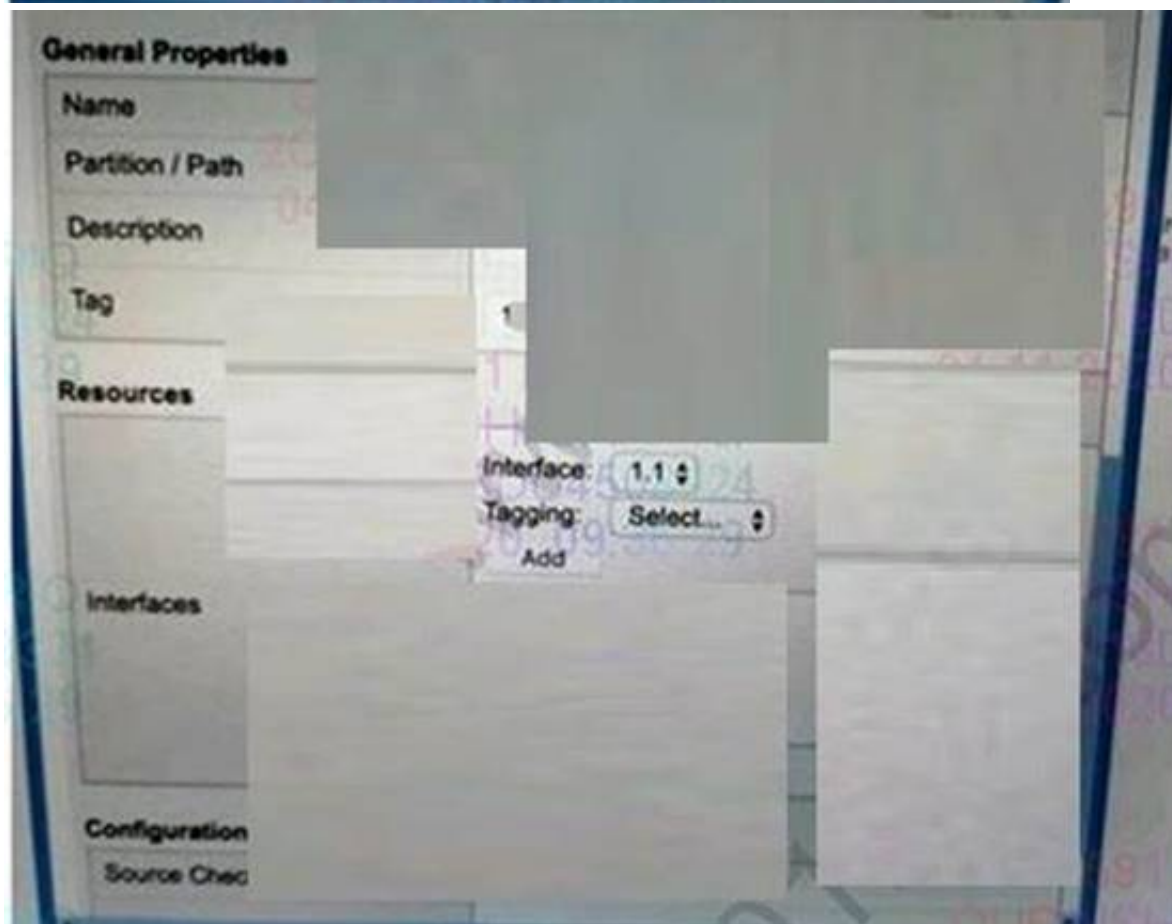
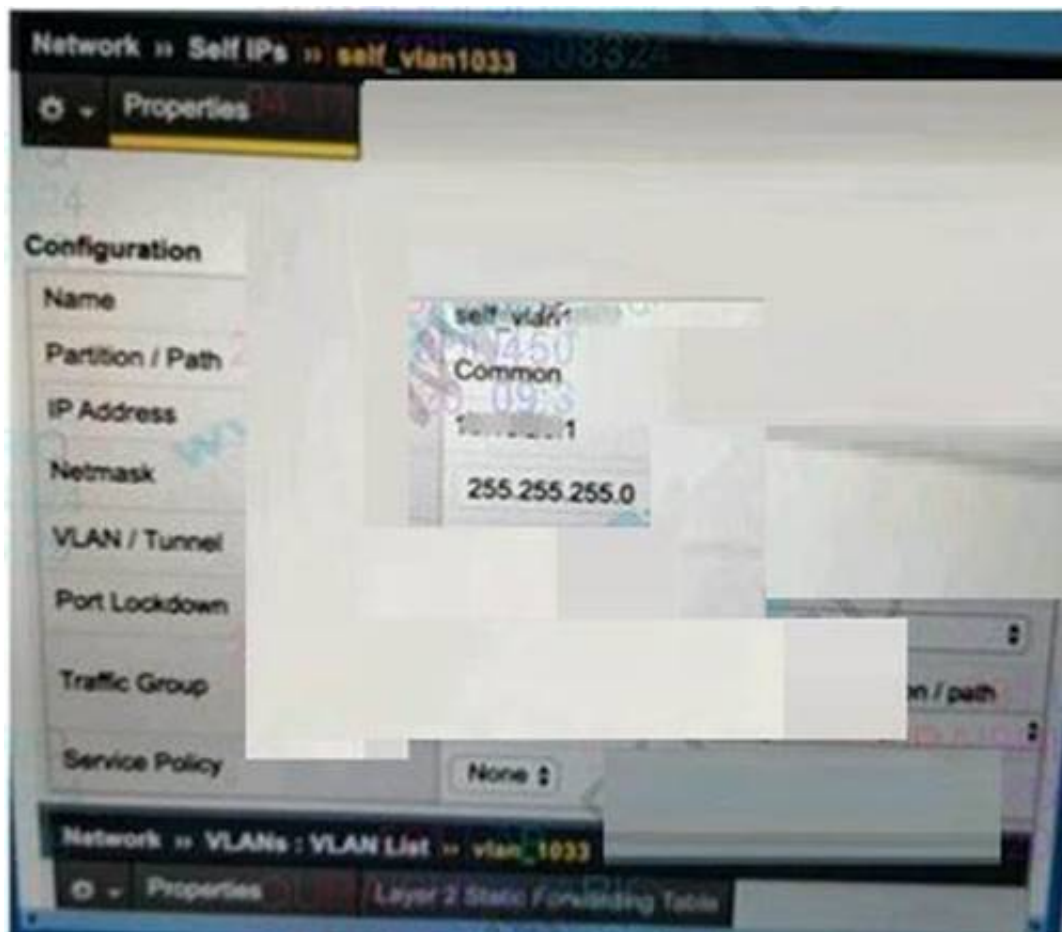
- A. Least Sessions
- B. Least Connections (member)
- C. Fastest (node)
- D. Weighted Least Connections (member)

**Answer:** D

#### NEW QUESTION 251

Refer to the exhibit





The network team creates a new VLAN on the switches. The BIG-IP Administrator needs to create a configuration on the BIG-IP device. The BIG-IP Administrator creates a new VLAN and Self IP, but the servers on the new VLAN are NOT reachable from the BIG-IP device. Which action should the BIG-IP Administrators to resolve this issue?

- A. Set Port Lockdown of Set IP to Allow All
- B. Change Auto Last Hop to enabled
- C. Assign a physical interface to the new VLAN
- D. Create a Floating Set IP Address

**Answer: C**

#### NEW QUESTION 252

Which two statements are true about SNATs? (Choose two.)

- A. SNATs are enabled on all VLANs, by default.
- B. SNATs can be configured within a Profile definition.
- C. SNATs can be configured within a Virtual Server definition.
- D. SNAT's are enabled only on the VLAN where origin traffic arrives, by default.

**Answer: AC**

#### NEW QUESTION 255

A BIG-IP Administrator makes a configuration change to a Virtual Server on the Standby device of an HA pair. The HA pair is currently configured with Auto-Sync Enabled. What effect will the change have on the HA pair configuration?

- A. The change will be undone when Auto-Sync propagates the config to the HA pair.
- B. The change will be propagated next time a configuration change is made on the Active device.



- C. The change will be undone next time a configuration change is made on the Active device.
- D. The change will take effect when Auto-Sync propagates the config to the HA pair.

**Answer:** D

**NEW QUESTION 256**

The BIG-IP Administrator disable all pool members in a pool Users are still able to reach the pool members.  
What is allowing users to continue to reach the disabled pool members?

- A. A slow to time on Pool
- B. A persistence profile on the Virtual Server
- C. A slow ramp time on virtual Server
- D. A persistence profile on the Pool

**Answer:** B

**NEW QUESTION 259**

What is required for a virtual server to support clients whose traffic arrives on the internal VLAN and pool members whose traffic arrives on the external VLAN?

- A. That support is never available.
- B. The virtual server must be enabled for both VLANs.
- C. The virtual server must be enabled on the internal VLAN.
- D. The virtual server must be enabled on the external VLAN.

**Answer:** C

**NEW QUESTION 264**

.....

## THANKS FOR TRYING THE DEMO OF OUR PRODUCT

Visit Our Site to Purchase the Full Set of Actual 201 Exam Questions With Answers.

We Also Provide Practice Exam Software That Simulates Real Exam Environment And Has Many Self-Assessment Features. Order the 201 Product From:

<https://www.2passeasy.com/dumps/201/>

## Money Back Guarantee

### 201 Practice Exam Features:

- \* 201 Questions and Answers Updated Frequently
- \* 201 Practice Questions Verified by Expert Senior Certified Staff
- \* 201 Most Realistic Questions that Guarantee you a Pass on Your FirstTry
- \* 201 Practice Test Questions in Multiple Choice Formats and Updatesfor 1 Year