

# PMI

## Exam Questions CAPM

Certified Associate in Project Management (PMI-100)



#### NEW QUESTION 1

- (Exam Topic 3)

An input required in Define Scope is an organizational:

- A. structure.
- B. process asset.
- C. matrix.
- D. breakdown structure.

**Answer: B**

#### NEW QUESTION 2

- (Exam Topic 3)

Which of the following involves making information available to project stakeholders in a timely manner?

- A. Plan Communications
- B. Performance reporting
- C. Project status reports
- D. Distribute Information

**Answer: D**

#### NEW QUESTION 3

- (Exam Topic 3)

An electronics firm authorizes a new project to develop a faster, cheaper, and smaller laptop after improvements in the industry and electronics technology. With which of the following strategic considerations is this project mainly concerned?

- A. Customer request
- B. Market demand
- C. Technological advance
- D. Strategic opportunity

**Answer: C**

#### NEW QUESTION 4

- (Exam Topic 3)

Which is an example of Administer Procurements?

- A. Negotiating the contract
- B. Authorizing contractor work
- C. Developing the statement of work
- D. Establishing evaluation criteria

**Answer: B**

#### NEW QUESTION 5

- (Exam Topic 3)

Project or phase closure guidelines or requirements, historical information, and the lessons learned knowledge base are examples of which input to the Close Project or Phase process?

- A. Organizational process assets
- B. A work breakdown structure
- C. The project management plan
- D. Enterprise environmental factors

**Answer: A**

#### NEW QUESTION 6

- (Exam Topic 3)

Which of the following is an input to Direct and Manage Project Execution?

- A. Requested changes
- B. Approved change requests
- C. Work performance information
- D. Implemented defect repair

**Answer: B**

#### NEW QUESTION 7

- (Exam Topic 3)

An output of the Create WBS process is:

- A. Scope baseline.
- B. Project scope statement.
- C. Organizational process assets.

D. Requirements traceability matrix.

**Answer:** A

**NEW QUESTION 8**

- (Exam Topic 3)

An input to the Create WBS process is a:

- A. project charter.
- B. stakeholder register.
- C. project scope statement.
- D. requirements traceability matrix.

**Answer:** C

**NEW QUESTION 9**

- (Exam Topic 3)

Which estimating technique uses the actual costs of previous similar projects as a basis for estimating the costs of the current project?

- A. Analogous
- B. Parametric
- C. Bottom-up
- D. Top-down

**Answer:** A

**NEW QUESTION 10**

- (Exam Topic 3)

Which type of analysis systemically gathers and analyzes qualitative and quantitative information to determine which interests should be taken into account throughout the project?

- A. Product
- B. Cost-benefit
- C. Stakeholder
- D. Research

**Answer:** C

**NEW QUESTION 10**

- (Exam Topic 3)

A procurement management plan is a subsidiary of which other type of plan?

- A. Resource plan
- B. Project management plan
- C. Cost control plan
- D. Expected monetary value plan

**Answer:** B

**NEW QUESTION 13**

- (Exam Topic 3)

An output of the Develop Project Team process is:

- A. change requests
- B. team performance assessments
- C. project staff assignments
- D. project documents updates

**Answer:** B

**NEW QUESTION 18**

- (Exam Topic 3)

At which point of the project is the uncertainty the highest and the risk of failing the greatest?

- A. Final phase of the project
- B. Start of the project
- C. End of the project
- D. Midpoint of the project

**Answer:** B

**NEW QUESTION 22**

- (Exam Topic 3)

What type of reward can hurt team cohesiveness?

- A. Sole-sum
- B. Win-lose
- C. Lose-win
- D. Partial-sum

**Answer:** B

**NEW QUESTION 23**

- (Exam Topic 3)

Managing ongoing production of goods and services to ensure business continues efficiently describes which type of management?

- A. Portfolio
- B. Project
- C. Program
- D. Operations

**Answer:** D

**NEW QUESTION 27**

- (Exam Topic 3)

An input of the Plan Procurement Management process is:

- A. Make-or-buy decisions.
- B. Activity cost estimates.
- C. Seller proposals.
- D. Procurement documents.

**Answer:** B

**NEW QUESTION 29**

- (Exam Topic 3)

Which Process Group typically consumes the bulk of a project's budget?

- A. Monitoring and Controlling
- B. Executing
- C. Planning
- D. Initiating

**Answer:** B

**NEW QUESTION 31**

- (Exam Topic 3)

If the most likely duration of an activity is five weeks, the best-case duration is two weeks, and the worst-case duration is 14 weeks, how many weeks is the expected duration of the activity?

- A. One
- B. Five
- C. Six
- D. Seven

**Answer:** C

**NEW QUESTION 36**

- (Exam Topic 3)

Which of the following statements best describes the influence of stakeholders and the cost of changes as project time advances?

- A. The influence of the stakeholders increases, the cost of changes increases.
- B. The influence of the stakeholders decreases, the cost of changes increases.
- C. The influence of the stakeholders increases, the cost of changes decreases.
- D. The influence of the stakeholders decreases, the cost of changes decreases.

**Answer:** B

**NEW QUESTION 40**

- (Exam Topic 3)

Which technique is used in Perform Quantitative Risk Analysis?

- A. Sensitivity analysis
- B. Probability and impact matrix
- C. Risk data quality assessment
- D. Risk categorization

**Answer:** A

**NEW QUESTION 45**

- (Exam Topic 3)

Which of the following is an enterprise environmental factor that can influence the Develop Project Charter process?

- A. Organizational standard processes
- B. Marketplace conditions
- C. Historical information
- D. Templates

**Answer: B**

#### **NEW QUESTION 49**

- (Exam Topic 3)

Which schedule network analysis technique modifies the project schedule to account for limited resources?

- A. Human resource planning
- B. Fast tracking
- C. Critical chain method
- D. Rolling wave planning

**Answer: C**

#### **NEW QUESTION 51**

- (Exam Topic 3)

Which of the following is a narrative description of products, services, or results to be delivered by a project?

- A. Project statement of work
- B. Business case
- C. Accepted deliverable
- D. Work performance information

**Answer: A**

#### **NEW QUESTION 52**

- (Exam Topic 3)

Which process is included in the Project Integration Management Knowledge Area?

- A. Manage Project Team
- B. Collect Requirements
- C. Sequence Activities
- D. Direct and Manage Project Work

**Answer: D**

#### **NEW QUESTION 56**

- (Exam Topic 3)

Work performance information and cost forecasts are outputs of which Project Cost Management process?

- A. Estimate Costs
- B. Plan Cost Management
- C. Determine Budget
- D. Control Costs

**Answer: D**

#### **NEW QUESTION 59**

- (Exam Topic 3)

Most experienced project managers know that:

- A. every project requires the use of all processes in the PMBOK® Guide.
- B. there is no single way to manage a project.
- C. project management techniques are risk free.
- D. there is only one way to manage projects successfully.

**Answer: B**

#### **NEW QUESTION 63**

- (Exam Topic 3)

While implementing an approved change, a critical defect was introduced. Removing the defect will delay the product delivery. What is the MOST appropriate approach to managing this situation?

- A. Utilize the change control process.
- B. Crash the schedule to fix the defect.
- C. Leave the defect in and work around it.
- D. Fast-track the remaining development.

**Answer: A**

**NEW QUESTION 67**

- (Exam Topic 3)

The project manager notes that stakeholders are aware of the project and potential impacts and are actively engaged in ensuring that the project is a success. The engagement level of the stakeholders should be classified as:

- A. Supportive
- B. Leading
- C. Neutral
- D. Resistant

**Answer: B**

**NEW QUESTION 70**

- (Exam Topic 3)

Organizations perceive risks as:

- A. events that will inevitably impact project and organizational objectives.
- B. the effect of uncertainty on their project and organizational objectives.
- C. events which could have a negative impact on project and organizational objectives.
- D. the negative impact of undesired events on their project and organizational objectives.

**Answer: B**

**NEW QUESTION 72**

- (Exam Topic 3)

Which of the following statements correctly characterizes pull communication?

- A. It includes letters, memos, reports, emails, and faxes.
- B. It requires recipients to access communication content at their own discretion.
- C. It is the most efficient way to ensure a common understanding among all participants.
- D. It is primarily used when the volume of information to be transferred is minimal.

**Answer: B**

**NEW QUESTION 75**

- (Exam Topic 3)

What is the difference between the critical path and the critical chain?

- A. Scope changes
- B. Resource limitations
- C. Risk analysis
- D. Quality audits

**Answer: B**

**NEW QUESTION 77**

- (Exam Topic 3)

As part of a mid-project evaluation, the project sponsor has asked for a forecast of the total project cost. What should be used to calculate the forecast?

- A. BAC
- B. EAC
- C. ETC
- D. WBS

**Answer: B**

**NEW QUESTION 78**

- (Exam Topic 3)

A collection of projects managed as a group to achieve strategic objectives is referred to as a:

- A. plan
- B. process
- C. program
- D. portfolio

**Answer: D**

**NEW QUESTION 79**

- (Exam Topic 3)

Definitions of probability and impact, revised stakeholder tolerances, and tracking are components of which subsidiary plan?

- A. Cost management plan
- B. Quality management plan
- C. Communications management plan
- D. Risk management plan

**Answer:**

D

**NEW QUESTION 82**

- (Exam Topic 3)

Projects are undertaken by an organization to support the:

- A. Product performance.
- B. Budget process.
- C. Collective capabilities.
- D. Organizational strategy.

**Answer: D**

**NEW QUESTION 84**

- (Exam Topic 3)

The most commonly used type of precedence relationship in the precedence diagramming method (PDM) is:

- A. start-to-start (SS)
- B. start-to-finish (SF)
- C. finish-to-start (FS)
- D. finish-to-finish (FF)

**Answer: C**

**NEW QUESTION 89**

- (Exam Topic 3)

Which process involves aggregating the estimated costs of the individual schedule activities or work packages?

- A. Estimate Costs
- B. Estimate Activity Resources
- C. Control Costs
- D. Determine Budget

**Answer: D**

**NEW QUESTION 93**

- (Exam Topic 3)

Which process involves documenting the actions necessary to define, prepare, integrate, and coordinate all subsidiary plans?

- A. Collect Requirements
- B. Direct and Manage Project Execution
- C. Monitor and Control Project Work
- D. Develop Project Management Plan

**Answer: D**

**NEW QUESTION 95**

- (Exam Topic 3)

When an activity cannot be estimated with a reasonable degree of confidence, the work within the activity is decomposed into more detail using which type of estimating?

- A. Bottom-up
- B. Parametric
- C. Analogous
- D. Three-point

**Answer: A**

**NEW QUESTION 97**

- (Exam Topic 3)

An input of the Control Schedule process is the:

- A. resource calendar.
- B. activity list.
- C. risk management plan.
- D. organizational process assets.

**Answer: D**

**NEW QUESTION 100**

- (Exam Topic 3)

Which tool is used to develop technical details within the project management plan?

- A. Expert judgment
- B. Project management methodology
- C. Project management information system (PMIS)

D. Project selection methods

**Answer:** A

**NEW QUESTION 103**

- (Exam Topic 3)

Assigned risk ratings are based upon:

- A. Root cause analysis.
- B. Risk probability and impact assessment.
- C. Expert judgment.
- D. Revised stakeholders' tolerances.

**Answer:** B

**NEW QUESTION 107**

- (Exam Topic 3)

The stakeholder register is an output of:

- A. Identify Stakeholders.
- B. Plan Stakeholder Management.
- C. Control Stakeholder Engagement.
- D. Manage Stakeholder Engagement.

**Answer:** A

**NEW QUESTION 111**

- (Exam Topic 3)

Which of the following is a tool and technique for Estimate Activity Durations?

- A. Parametric estimating
- B. Monte Carlo analysis
- C. Alternatives analysis
- D. Bottom-up estimating

**Answer:** A

**NEW QUESTION 115**

- (Exam Topic 3)

When would resource leveling be applied to a schedule model?

- A. Before constraints have been identified
- B. Before it has been analyzed by the critical path method
- C. After it has been analyzed by the critical path method
- D. After critical activities have been removed from the critical path

**Answer:** C

**NEW QUESTION 117**

- (Exam Topic 3)

Which process uses occurrence probability and impact on project objectives to assess the priority of identified risks?

- A. Identify Risks
- B. Perform Qualitative Risk Analysis
- C. Plan Risk Management
- D. Perform Quantitative Risk Analysis

**Answer:** B

**NEW QUESTION 119**

- (Exam Topic 3)

Which Project Management Process Group includes Collect Requirements, Define Activities, Sequence Activities, Perform Qualitative Risk Analysis, and Perform Quantitative Risk Analysis?

- A. Initiating
- B. Monitoring and Controlling
- C. Planning
- D. Closing

**Answer:** C

**NEW QUESTION 121**

- (Exam Topic 3)

Outputs of the Control Communications process include:



- A. expert judgment and change requests
- B. work performance information and change requests
- C. project management plan updates and work performance information
- D. issue logs and organizational process assets updates

**Answer:** B

#### **NEW QUESTION 124**

- (Exam Topic 3)

What is one of the objectives of Project Risk Management?

- A. Decrease the probability and impact of an event on project objectives.
- B. Distinguish between a project risk and a project issue so that a risk mitigation plan can be put in place.
- C. Increase the probability and impact of positive events.
- D. Removal of project risk.

**Answer:** C

#### **NEW QUESTION 128**

- (Exam Topic 3)

What is the name of the statistical method that helps identify which factors may influence specific variables of a product or process under development or in production?

- A. Failure modes and effects analysis
- B. Design of experiments
- C. Quality checklist
- D. Risk analysis

**Answer:** B

#### **NEW QUESTION 130**

- (Exam Topic 3)

Which of the following investigates the likelihood that each specific risk will occur?

- A. Risk register
- B. Risk audits
- C. Risk urgency assessment
- D. Risk probability and impact assessment

**Answer:** D

#### **NEW QUESTION 135**

- (Exam Topic 3)

The creation of an internet site to engage stakeholders on a project is an example of which type of communication?

- A. Push
- B. Pull
- C. Interactive
- D. Iterative

**Answer:** B

#### **NEW QUESTION 138**

- (Exam Topic 3)

To which process is work performance information an input?

- A. Administer Procurements
- B. Direct and Manage Project Execution
- C. Create WBS
- D. Perform Qualitative Risk Analysis

**Answer:** A

#### **NEW QUESTION 143**

- (Exam Topic 3)

Plan Risk Management is the process of defining how to:

- A. Communicate identified risks to the project stakeholders.
- B. Conduct risk management activities for a project.
- C. Analyze the impact a specific risk may have on the project.
- D. Address unexpected risks that may occur during a project.

**Answer:** B

#### **NEW QUESTION 147**

- (Exam Topic 3)

The scope of a project cannot be defined without some basic understanding of how to create the specified:

- A. objectives
- B. schedule
- C. product
- D. approach

**Answer: C**

#### **NEW QUESTION 151**

- (Exam Topic 3)

An output of Control Schedule is:

- A. A project schedule network diagram
- B. A schedule management plan
- C. Schedule data
- D. Schedule forecasts

**Answer: D**

#### **NEW QUESTION 155**

- (Exam Topic 3)

What is the name of a graphic display of project team members and their reporting relationships?

- A. Role dependencies chart
- B. Reporting flow diagram
- C. Project organization chart
- D. Project team structure diagram

**Answer: C**

#### **NEW QUESTION 160**

- (Exam Topic 3)

What tool and technique is used to determine whether work and deliverables meet requirements and product acceptance criteria?

- A. Decomposition
- B. Benchmarking
- C. Inspection
- D. Checklist analysis

**Answer: C**

#### **NEW QUESTION 164**

- (Exam Topic 3)

Which process includes prioritizing risks for subsequent further analysis or action by assessing and combining their probability of occurrence and impact?

- A. Perform Qualitative Risk Analysis
- B. Perform Quantitative Risk Analysis
- C. Plan Risk Management
- D. Plan Risk Responses

**Answer: A**

#### **NEW QUESTION 167**

- (Exam Topic 3)

Which activity is an input to the Conduct Procurements process?

- A. Organizational process assets
- B. Resource availability
- C. Perform Integrated Change Control
- D. Team performance assessment

**Answer: A**

#### **NEW QUESTION 171**

- (Exam Topic 3)

Which Knowledge Area is concerned with the processes required to ensure timely and appropriate generation, collection, distribution, storage, retrieval, and ultimate disposition of project information?

- A. Project Integration Management
- B. Project Communications Management
- C. Project Information Management System (PIMS)
- D. Project Scope Management

**Answer: B**

#### NEW QUESTION 174

- (Exam Topic 3)

A project manager seeking insight on previous stakeholder management plans and their effectiveness should evaluate:

- A. Historical information and the lessons-learned database.
- B. Historical information and the stakeholder register.
- C. Organizational process assets and the lessons-learned database.
- D. Project documents and historical information.

**Answer:** A

#### NEW QUESTION 176

- (Exam Topic 3)

When is a project finished?

- A. After verbal acceptance of the customer or sponsor
- B. After lessons learned have been documented in contract closure
- C. When the project objectives have been met
- D. After resources have been released

**Answer:** C

#### NEW QUESTION 177

- (Exam Topic 3)

The formal and informal interaction with others in an organization industry, or professional environment is known as:

- A. negotiation
- B. organizational theory
- C. meeting
- D. networking

**Answer:** D

#### NEW QUESTION 181

- (Exam Topic 3)

What type of planning is used where the work to be accomplished in the near term is planned in detail, while work in the future is planned at a higher level?

- A. Finish-to-start planning
- B. Rolling wave planning
- C. Short term planning
- D. Dependency determination

**Answer:** B

#### NEW QUESTION 182

- (Exam Topic 3)

The Verify Scope process is primarily concerned with:

- A. formalizing acceptance of the completed project deliverables.
- B. accuracy of the work deliverables.
- C. formalizing approval of the scope statement.
- D. accuracy of the work breakdown structure (WBS).

**Answer:** A

#### NEW QUESTION 187

- (Exam Topic 2)

Projects that share common outcomes, collective capability, knowledge, or skills are often grouped into a:

- A. portfolio
- B. program
- C. selection
- D. sub portfolio

**Answer:** B

#### NEW QUESTION 189

- (Exam Topic 2)

A project requires a component with well-understood specifications. Performance targets are established at the outset, and the final contract price is determined after completion of all work based on the seller's performance. The most appropriate agreement with the supplier is:

- A. Cost Plus Incentive Fee (CPIF).
- B. Fixed Price Incentive Fee (FPIF).
- C. Cost Plus Award Fee (CPAF).
- D. Fixed Price with Economic Price Adjustment (FP-EPA).

**Answer:**

B

**NEW QUESTION 191**

- (Exam Topic 2)

When a project is undertaken to reduce defects in a product or service, the objective of the project is to create a/an:

- A. improvement
- B. program
- C. result
- D. portfolio

**Answer:** A

**NEW QUESTION 193**

- (Exam Topic 2)

Organizational process assets, a lessons-learned database, and historical information are all inputs to which process?

- A. Plan Cost Management
- B. Plan Scope Management
- C. Plan Stakeholder Management
- D. Plan Schedule Management

**Answer:** C

**NEW QUESTION 195**

- (Exam Topic 2)

A projects purpose or justification, measurable project objectives and related success criteria, a summary milestone schedule, and a summary budget are all components of which document?

- A. Work breakdown structure
- B. Requirements document
- C. Project charter
- D. Project management plan

**Answer:** C

**NEW QUESTION 199**

- (Exam Topic 2)

Technical capability, past performance, and intellectual property rights are examples of:

- A. performance measurement criteria
- B. source selection criteria
- C. product acceptance criteria
- D. phase exit criteria

**Answer:** B

**NEW QUESTION 201**

- (Exam Topic 2)

A graphic display of project team members and their reporting relationships is known as a:

- A. Resource calendar.
- B. Project organization chart.
- C. Resource breakdown structure (RBS).
- D. Responsibility assignment matrix (RAM).

**Answer:** B

**NEW QUESTION 202**

- (Exam Topic 2)

A project team attempts to produce a deliverable and finds that they have neither the expertise nor the time to complete the deliverable in a timely manner. This issue could have been avoided if they had created and followed a:

- A. risk management plan
- B. human resource management plan
- C. scope management plan
- D. procurement management plan

**Answer:** D

**NEW QUESTION 204**

- (Exam Topic 2)

An output of the Perform Integrated Change Control process is:

- A. Deliverables.
- B. Validated changes.

- C. The change log.
- D. The requirements traceability matrix.

**Answer:** C

**NEW QUESTION 208**

- (Exam Topic 2)

Which items are components of a project management plan?

- A. Change management plan, process improvement plan, and scope management plan
- B. Agreements, procurement management plan, and work performance information
- C. Schedule management plan, project schedule, and resource calendars
- D. Scope baseline, project statement of work, and requirements traceability matrix

**Answer:** A

**NEW QUESTION 209**

- (Exam Topic 2)

A complete set of concepts, terms, and activities that make up an area of specialization is known as:

- A. a Knowledge Area
- B. a Process Group
- C. program management
- D. portfolio management

**Answer:** A

**NEW QUESTION 213**

- (Exam Topic 2)

A project manager should communicate to stakeholders about resolved project issues by updating the:

- A. project records
- B. project reports
- C. stakeholder notifications
- D. stakeholder register

**Answer:** C

**NEW QUESTION 217**

- (Exam Topic 2)

Tools and techniques used in Direct and Manage Project Work include:

- A. Process analysis and expert judgment
- B. Analytical techniques and a project management information system
- C. Performance reviews and meetings
- D. Expert judgment and meetings

**Answer:** D

**NEW QUESTION 219**

- (Exam Topic 2)

While processes in the Planning Process Group seek to collect feedback and define project documents to guide project work, organizational procedures dictate when the project planning:

- A. ends.
- B. begins.
- C. delays.
- D. deviates.

**Answer:** A

**NEW QUESTION 223**

- (Exam Topic 2)

Activity cost estimates and the project schedule are inputs to which Project Cost Management process?

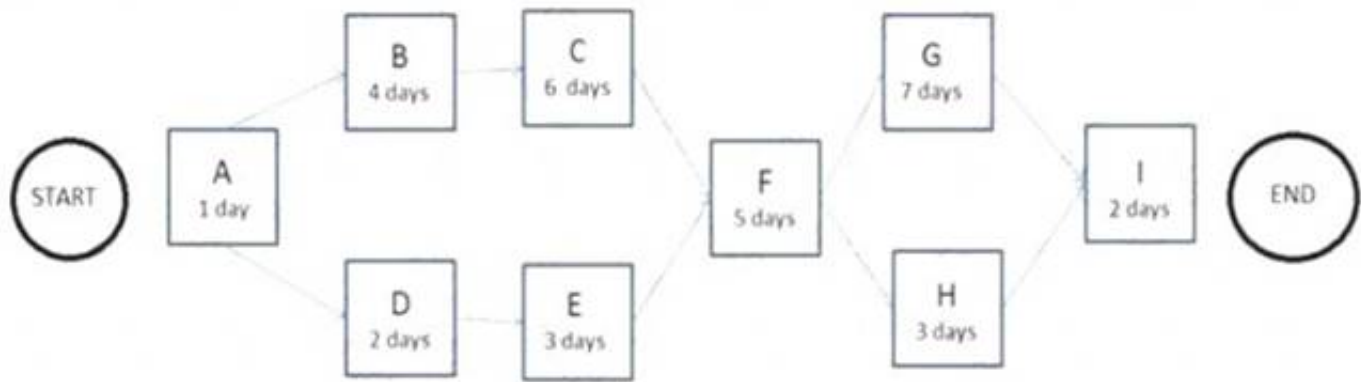
- A. Estimate Costs
- B. Control Costs
- C. Plan Cost Management
- D. Determine Budget

**Answer:** D

**NEW QUESTION 225**

- (Exam Topic 2)

The following is a network diagram for a project.



The total float for the project is how many days?

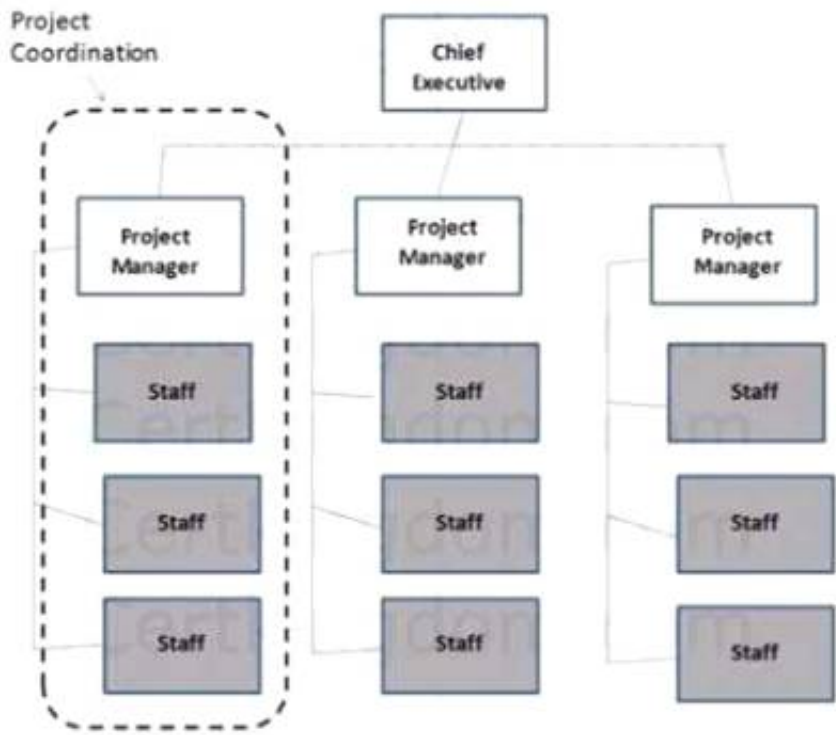
- A. 5
- B. 9
- C. 12
- D. 14

**Answer: B**

**NEW QUESTION 226**

- (Exam Topic 2)

Which type of organizational structure is displayed in the diagram provided?



- A. Balanced matrix
- B. Projectized
- C. Strong matrix
- D. Functional

**Answer: B**

**NEW QUESTION 229**

- (Exam Topic 2)

The following chart contains information about the tasks in a project.

Task	PV	AC	EV
1	10,000	10,000	10,000
2	10,000	8,000	10,000
3	10,000	8,000	8,000
4	9,000	12,000	10,000
5	10,000	12,000	12,000
6	10,000	10,000	12,000
7	12,000	12,000	10,000
8	10,000	8,000	9,000
9	12,000	10,000	11,000

Based on the chart, what is the schedulevariance (SV) for Task 8?

- A. A.--2,000B.-1,000C.1,000D.2,000



Answer: B

**NEW QUESTION 234**

- (Exam Topic 2)

The chart below is an example of a:

ID	Requirements Description	Project Objectives	WBS Deliverables	Product Design	Product Development	Test Cases
001						
002						
003						

- A. Responsibility assignment matrix (RAM)
- B. Work breakdown structure (WBS)
- C. RACI chart
- D. Requirements traceability matrix

Answer: D

**NEW QUESTION 239**

- (Exam Topic 2)

Which of the Perform Quality Assurance tools and techniques may enhance the creation of the work breakdown structure (VVBS) to give structure to the decomposition of the scope?

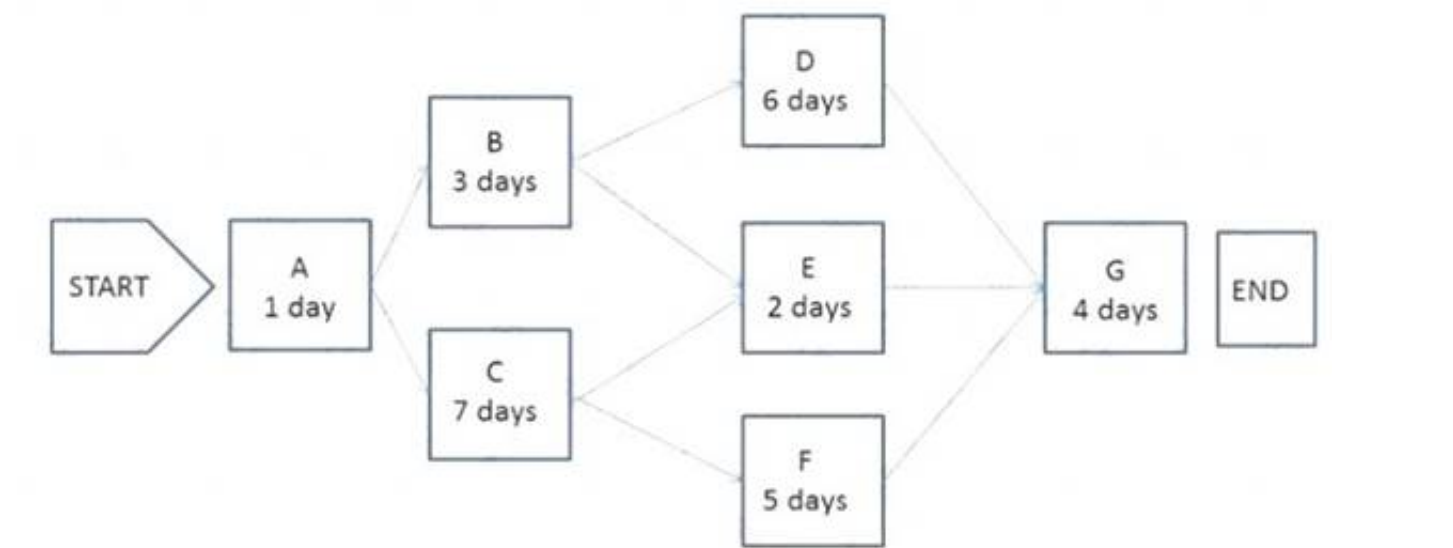
- A. Activity network diagrams
- B. Affinity diagrams
- C. Matrix diagrams
- D. Interrelationship digraphs

Answer: B

**NEW QUESTION 243**

- (Exam Topic 2)

The following is a network diagram for a project.



The critical path for the project is how many days in duration?

- A. 10
- B. 12
- C. 14
- D. 17

Answer: D

**NEW QUESTION 244**

- (Exam Topic 2)

An intentional activity to modify a nonconforming product or product component is called:

- A. defect repair
- B. work repair
- C. corrective action
- D. preventive action

Answer: A

**NEW QUESTION 245**

- (Exam Topic 2)

The Project Human Resource Management process that involves confirming human resource availability and obtaining the team necessary to complete project

activities is:

- A. Acquire Project Team.
- B. Plan Human Resource Management.
- C. Manage Project Team.
- D. Develop Project Team.

**Answer:** A

#### **NEW QUESTION 247**

- (Exam Topic 2)

In complex projects/ initiating processes should be completed:

- A. Within a work package.
- B. In each phase of the project.
- C. To estimate schedule constraints.
- D. To estimate resource allocations.

**Answer:** B

#### **NEW QUESTION 252**

- (Exam Topic 2)

The degree of uncertainty an entity is willing to take on in anticipation of a reward is known as its risk:

- A. management
- B. response
- C. tolerance
- D. appetite

**Answer:** D

#### **NEW QUESTION 257**

- (Exam Topic 2)

An issue log is an input to which Project Human Resource Management process?

- A. Manage Project Team
- B. Acquire Project Team
- C. Plan Human Resource Management
- D. Develop Project Team

**Answer:** A

#### **NEW QUESTION 259**

- (Exam Topic 2)

The process of defining how the project scope will be validated and controlled is known as:

- A. Define Scope.
- B. Develop Project Management Plan.
- C. Plan Scope Management.
- D. Plan Quality Management.

**Answer:** C

#### **NEW QUESTION 261**

- (Exam Topic 2)

Success is measured by benefits realization for a:

- A. strategic plan
- B. project
- C. portfolio
- D. program

**Answer:** C

#### **NEW QUESTION 262**

- (Exam Topic 2)

A risk that arises as a direct result of implementing a risk response is called a:

- A. contingent risk
- B. residual risk
- C. potential risk
- D. secondary risk

**Answer:** D

#### **NEW QUESTION 264**



- (Exam Topic 2)

An input to the Perform Integrated Change Control process is:

- A. expert judgment
- B. seller proposals
- C. the project charter
- D. the project management plan

**Answer:** D

#### **NEW QUESTION 265**

- (Exam Topic 2)

The component of the human resource management plan that includes ways in which team members can obtain certifications that support their ability to benefit the project is known as:

- A. recognition and rewards
- B. compliance
- C. staff acquisition
- D. training needs

**Answer:** D

#### **NEW QUESTION 268**

- (Exam Topic 2)

Which process is usually a rapid and cost-effective means of establishing priorities for Plan Risk Responses?

- A. Identify Risks
- B. Plan Risk Management
- C. Perform Qualitative Risk Analysis
- D. Perform Quantitative Risk Analysis

**Answer:** C

#### **NEW QUESTION 272**

- (Exam Topic 2)

A project manager who communicates to the project team through email is using which type of communication?

- A. Formal
- B. Informal
- C. Horizontal
- D. Unofficial

**Answer:** B

#### **NEW QUESTION 277**

- (Exam Topic 2)

A tool and technique used in the Develop Project Charter process is:

- A. change control tools
- B. expert judgment
- C. meetings
- D. analytical techniques

**Answer:** B

#### **NEW QUESTION 279**

- (Exam Topic 2)

Which tool or technique is required in order to determine the project budget?

- A. Cost of quality
- B. Historical relationships
- C. Project management software
- D. Forecasting

**Answer:** B

#### **NEW QUESTION 283**

- (Exam Topic 2)

Project deliverables that have been completed and checked for correctness through the Control Quality process are known as:

- A. Verified deliverables.
- B. Validated deliverables.
- C. Acceptance criteria.
- D. Activity resource requirements.

**Answer:** A

**NEW QUESTION 288**

- (Exam Topic 2)

The primary benefit of the Plan Schedule Management process is that it:

- A. provides guidance to identify time or schedule challenges within the project.
- B. tightly links processes to create a seamless project schedule.
- C. guides how the project schedule will be managed throughout the project.
- D. creates an overview of all activities broken down into manageable subsections.

**Answer:** C

**NEW QUESTION 292**

- (Exam Topic 2)

Which tools or techniques are used during the Close Project or Phase process?

- A. Reserve analysis and expert judgment
- B. Facilitation techniques and meetings
- C. Expert judgment and analytical techniques
- D. Performance reviews and meetings

**Answer:** C

**NEW QUESTION 296**

- (Exam Topic 2)

The lowest level normally depicted in a work breakdown structure (WBS) is called a/an:

- A. work package
- B. deliverable
- C. milestone
- D. activity

**Answer:** A

**NEW QUESTION 300**

- (Exam Topic 2)

The following chart contains information about the tasks in a project.

Task	PV	AC	EV
1	10,000	10,000	10,000
2	10,000	8,000	10,000
3	10,000	8,000	8,000
4	9,000	12,000	10,000
5	10,000	12,000	12,000
6	10,000	10,000	12,000
7	12,000	12,000	10,000
8	10,000	8,000	9,000
9	12,000	10,000	11,000

Based on the chart, what is the cost performance index (CPI) for Task 2?

- A. 0.8
- B. 1
- C. 1.25
- D. 1.8

**Answer:** C

**NEW QUESTION 301**

- (Exam Topic 2)

Which enterprise environmental factors may influence Plan Schedule Management?

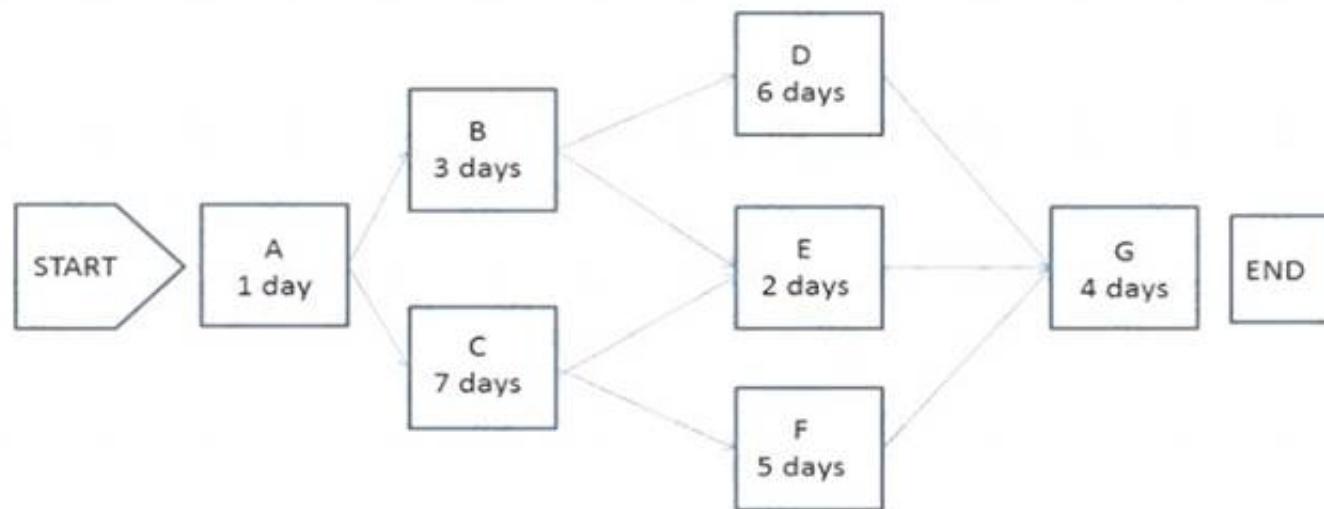
- A. Cultural views regarding time schedules and professional and ethical behaviors
- B. Historical information and change control procedures
- C. Risk control procedures and the probability and impact matrix
- D. Resource availability and organizational culture and structure

**Answer:** D

#### NEW QUESTION 302

- (Exam Topic 2)

The following is a network diagram for a project.



The shortest non-critical path for the project is how many days in duration?

- A. 10
- B. 12
- C. 14
- D. 16

**Answer:** A

#### NEW QUESTION 306

- (Exam Topic 1)

A project charter is an output of which Process Group?

- A. Executing
- B. Planning
- C. Initiating
- D. Closing

**Answer:** C

#### NEW QUESTION 310

- (Exam Topic 1)

Which item is an output of Plan Quality Management and an input to Perform Quality Assurance?

- A. Organizational process updates
- B. Quality metrics
- C. Change requests
- D. Quality control measurements

**Answer:** B

#### NEW QUESTION 315

- (Exam Topic 1)

The number of potential communication channels for a project with 5 stakeholders is:

- A. 10.
- B. 12.
- C. 20.
- D. 24.

**Answer:** A

#### NEW QUESTION 320

- (Exam Topic 1)

Which tool or technique is used in the Perform Integrated Change Control process?

- A. Decomposition
- B. Modeling techniques
- C. Resource optimization
- D. Meetings

**Answer:** D

#### NEW QUESTION 325

- (Exam Topic 1)

Which conflict resolution technique searches for solutions that bring some degree of satisfaction to all parties in order to temporarily or partially resolve the conflict?

- A. Force/direct
- B. Withdraw/avoid

- C. Compromise/reconcile
- D. Collaborate/problem solve

**Answer:** C

**NEW QUESTION 329**

- (Exam Topic 1)

The process of identifying and documenting project roles, responsibilities, required skills, and reporting relationships and creating a staffing management plan is known as:

- A. Develop Project Team.
- B. Manage Project Team.
- C. Acquire Project Team.
- D. Plan Human Resource Management.

**Answer:** D

**NEW QUESTION 330**

- (Exam Topic 1)

The Monitoring and Controlling Process Group includes processes that:

- A. Establish the scope, objectives, and course of action of a project,
- B. Define a new project or a new phase of an existing project.
- C. Track, review, and regulate the progress and performance of a project.
- D. Complete the work defined in the project management plan.

**Answer:** C

**NEW QUESTION 331**

- (Exam Topic 1)

What is the schedule performance index (SPI) if the planned value (PV) is \$100, the actual cost (AC) is \$150, and the earned value (EV) is \$50?

- A. 0.50
- B. 0.67
- C. 1.50
- D. 2.00

**Answer:** A

**NEW QUESTION 335**

- (Exam Topic 1)

An input to the Plan Stakeholder Management process is:

- A. The project charter.
- B. The stakeholder analysis.
- C. A communication management plan.
- D. A stakeholder register.

**Answer:** D

**NEW QUESTION 336**

- (Exam Topic 1)

The Perform Quality Assurance process occurs in which Process Group?

- A. Executing
- B. Monitoring and Controlling
- C. Initiating
- D. Planning

**Answer:** A

**NEW QUESTION 340**

- (Exam Topic 1)

A key benefit of the Manage Communications process is that it enables:

- A. The best use of communication methods.
- B. An efficient and effective communication flow.
- C. Project costs to be reduced.
- D. The best use of communication technology.

**Answer:** B

**NEW QUESTION 344**

- (Exam Topic 1)

Which Control Quality tool is also known as an arrow diagram?

- A. Matrix diagram
- B. Affinity diagram
- C. Tree diagram
- D. Activity network diagram

**Answer:** D

**NEW QUESTION 347**

- (Exam Topic 1)

Units of measure, level of precision, level of accuracy, control thresholds, and rules of performance measurement are examples of items that are established in the:

- A. Cost management plan.
- B. Work performance information.
- C. Quality management plan.
- D. Work breakdown structure.

**Answer:** A

**NEW QUESTION 349**

- (Exam Topic 1)

Which item is a formal proposal to modify any document, deliverable, or baseline?

- A. Change request
- B. Requirements documentation
- C. Scope baseline
- D. Risk urgency assessment

**Answer:** A

**NEW QUESTION 351**

- (Exam Topic 1)

An input to the Manage Project Team process is:

- A. Work performance reports.
- B. Change requests.
- C. Activity resource requirements.
- D. Enterprise environmental factors.

**Answer:** A

**NEW QUESTION 353**

- (Exam Topic 1)

Inputs to the Plan Schedule Management process include:

- A. Organizational process assets and the project charter,
- B. Enterprise environmental factors and schedule tools.
- C. Time tables and Pareto diagrams.
- D. Activity attributes and resource calendars.

**Answer:** A

**NEW QUESTION 355**

- (Exam Topic 1)

Identify Risks is part of which Process Group?

- A. Planning
- B. Executing
- C. Closing
- D. Initiating

**Answer:** A

**NEW QUESTION 358**

- (Exam Topic 1)

Which risk management strategy seeks to eliminate the uncertainty associated with a particular upside risk by ensuring that the opportunity is realized?

- A. Enhance
- B. Share
- C. Exploit
- D. Accept

**Answer:** C

**NEW QUESTION 363**

- (Exam Topic 1)

A project manager managing a cross-cultural virtual project team across several time zones should be concerned about the impacts of which communication technology factor?

- A. Urgent information need
- B. Sensitivity of information
- C. Project environment
- D. Ease of use

**Answer: C**

#### **NEW QUESTION 368**

- (Exam Topic 1)

A logical relationship in which a successor activity cannot start until a predecessor activity has finished is known as:

- A. Start-to-start (SS).
- B. Start-to-finish (SF).
- C. Finish-to-start (FS).
- D. Finish-to-finish (FF).

**Answer: C**

#### **NEW QUESTION 371**

- (Exam Topic 1)

Which Define Activities output extends the description of the activity by identifying the multiple components associated with each activity?

- A. Project document updates
- B. Activity list
- C. Activity attributes
- D. Project calendars

**Answer: C**

#### **NEW QUESTION 376**

- (Exam Topic 1)

Which grid shows which resources are tied to work packages?

- A. Work breakdown structure (WBS)
- B. Responsibility assignment matrix (RAM)
- C. Project assignment chart
- D. Personnel assignment matrix

**Answer: B**

#### **NEW QUESTION 381**

- (Exam Topic 1)

Which Collect Requirements output links the product requirements to the deliverables that satisfy them?

- A. Requirements documentation
- B. Requirements traceability matrix
- C. Project management plan updates
- D. Project documents updates

**Answer: B**

#### **NEW QUESTION 382**

- (Exam Topic 1)

Organizational theory is a tool used in which Project Human Resource Management process?

- A. Manage Project Team
- B. Acquire Project Team
- C. Develop Project Team
- D. Plan Human Resource Management

**Answer: D**

#### **NEW QUESTION 387**

- (Exam Topic 1)

An element of the project scope statement is:

- A. Acceptance criteria.
- B. A stakeholder list.
- C. A summary budget,
- D. High-level risks.

**Answer: A**

**NEW QUESTION 388**

- (Exam Topic 1)

An input to Conduct Procurements is:

- A. Independent estimates.
- B. Selected sellers.
- C. Seller proposals.
- D. Resource calendars.

**Answer:** C

**NEW QUESTION 392**

- (Exam Topic 1)

In which Knowledge Area is the project charter developed?

- A. Project Cost Management
- B. Project Scope Management
- C. Project Time Management
- D. Project Integration Management

**Answer:** D

**NEW QUESTION 396**

- (Exam Topic 1)

A project manager builds consensus and overcomes obstacles by employing which communication technique?

- A. Listening
- B. Facilitation
- C. Meeting management
- D. Presentation

**Answer:** B

**NEW QUESTION 399**

- (Exam Topic 1)

Lessons learned are created and project resources are released in which Process Group?

- A. Planning
- B. Executing
- C. Closing
- D. Initiating

**Answer:** C

**NEW QUESTION 400**

- (Exam Topic 1)

A project manager is appointed full-time to a project and is given full-time administrative staff and full-time project team members. This situation describes which type of organizational structure?

- A. Projectized
- B. Weak matrix
- C. Functional
- D. Balanced matrix

**Answer:** A

**NEW QUESTION 403**

- (Exam Topic 1)

The only Process Group that comprises processes that typically occur from the beginning to the end of the project life cycle is:

- A. Planning.
- B. Executing,
- C. Monitoring and Controlling.
- D. Closing.

**Answer:** C

**NEW QUESTION 404**

- (Exam Topic 1)

The planned work contained in the lowest level of work breakdown structure (WBS) components is known as:

- A. Work packages.
- B. Accepted deliverables.
- C. The WBS dictionary.
- D. The scope baseline.

**Answer:**



A

**NEW QUESTION 409**

- (Exam Topic 1)

Which process determines the risks that may affect the project and documents their characteristics?

- A. Control Risks
- B. Plan Risk Management
- C. Plan Risk Responses
- D. Identify Risks

**Answer: D**

**NEW QUESTION 413**

- (Exam Topic 1)

The iterative process of increasing the level of detail in a project management plan as greater amounts of information become available is known as:

- A. Continuous improvement.
- B. Predictive planning.
- C. Progressive elaboration.
- D. Quality assurance.

**Answer: C**

**NEW QUESTION 417**

- (Exam Topic 1)

Enterprise environmental factors are an input to which process?

- A. Control Scope
- B. Define Scope
- C. Plan Scope Management
- D. Collect Requirements

**Answer: C**

**NEW QUESTION 420**

- (Exam Topic 1)

An output of the Create WBS process is:

- A. Scope baseline.
- B. Change requests.
- C. Accepted deliverables.
- D. Variance analysis.

**Answer: A**

**NEW QUESTION 422**

- (Exam Topic 1)

Which input to the Manage Stakeholder Engagement process provides guidance on how stakeholders can best be involved in a project?

- A. Feedback analysis
- B. Stakeholder analysis
- C. Communication management plan
- D. Stakeholder management plan

**Answer: D**

**NEW QUESTION 426**

- (Exam Topic 1)

Which input provides suppliers with a clear set of goals, requirements, and outcomes?

- A. Procurement statement of work
- B. Purchase order
- C. Source selection criteria
- D. Bidder conference

**Answer: A**

**NEW QUESTION 427**

- (Exam Topic 1)

Which input to Collect Requirements is used to identify stakeholders who can provide information on requirements?

- A. Stakeholder register
- B. Scope management plan
- C. Stakeholder management plan
- D. Project charter



**Answer:** A

**NEW QUESTION 430**

- (Exam Topic 1)

External organizations that have a special relationship with the enterprise and provide specialized expertise are called:

- A. Customers.
- B. Business partners.
- C. Sellers.
- D. Functional managers.

**Answer:** B

**NEW QUESTION 433**

- (Exam Topic 1)

Which Knowledge Areas include processes from the Closing Process Group?

- A. Project Quality Management and Project Time Management
- B. Project Scope Management and Project Risk Management
- C. Project Stakeholder Management and Project Cost Management
- D. Project Integration Management and Project Procurement Management

**Answer:** D

**NEW QUESTION 437**

- (Exam Topic 1)

Conditions that are not under the control of the project team that influence, direct, or constrain a project are called:

- A. Enterprise environmental factors
- B. Work performance reports
- C. Organizational process assets
- D. Context diagrams

**Answer:** A

**NEW QUESTION 438**

- (Exam Topic 1)

When should quality planning be performed?

- A. While developing the project charter
- B. In parallel with the other planning processes
- C. As part of a detailed risk analysis
- D. As a separate step from the other planning processes

**Answer:** B

**NEW QUESTION 443**

- (Exam Topic 1)

Which Knowledge Area involves identifying the people, groups, or organizations that may be impacted by or impact a project?

- A. Project Risk Management
- B. Project Human Resource Management
- C. Project Scope Management
- D. Project Stakeholder Management

**Answer:** D

**NEW QUESTION 446**

- (Exam Topic 1)

A project in which the scope, time, and cost of delivery are determined as early as possible is following a life cycle that is:

- A. Adaptive
- B. Predictive
- C. Incremental
- D. Iterative

**Answer:** B

**NEW QUESTION 449**

- (Exam Topic 1)

Which process involves monitoring the status of the project to update the project costs and managing changes to the cost baseline?

- A. Estimate Costs
- B. Control Costs
- C. Determine Budget

D. Plan Cost Management

**Answer:** B

**NEW QUESTION 450**

- (Exam Topic 1)

Which tool or technique is an examination of industry and specific vendor capabilities?

- A. Independent estimates
- B. Market research
- C. Analytical techniques
- D. Bidder conferences

**Answer:** B

**NEW QUESTION 453**

- (Exam Topic 1)

The Identify Stakeholders process is found in which Process Group?

- A. Initiating
- B. Monitoring and Controlling
- C. Planning
- D. Executing

**Answer:** A

**NEW QUESTION 456**

- (Exam Topic 1)

An output of the Validate Scope process is:

- A. A requirements traceability matrix.
- B. The scope management plan.
- C. Work performance reports.
- D. Change requests.

**Answer:** D

**NEW QUESTION 458**

- (Exam Topic 1)

A risk response strategy in which the project team shifts the impact of a threat, together with ownership of the response, to a third party is called:

- A. mitigate
- B. accept
- C. transfer
- D. avoid

**Answer:** C

**NEW QUESTION 461**

- (Exam Topic 1)

The review of a seller's progress toward achieving the goals of scope and quality within cost and schedule compared to the contract is known as:

- A. Work performance information.
- B. Inspections and audits.
- C. Payment systems.
- D. Procurement performance reviews.

**Answer:** D

**NEW QUESTION 466**

- (Exam Topic 1)

The process of identifying and documenting relationships among the project activities is known as:

- A. Control Schedule.
- B. Sequence Activities.
- C. Define Activities.
- D. Develop Schedule.

**Answer:** B

**NEW QUESTION 467**

- (Exam Topic 1)

Which type of dependency is established based on knowledge of best practices within a particular application area or some unusual aspect of the project in which a specific sequence is desired, even though there may be other acceptable sequences?

- A. External
- B. Internal
- C. Mandatory
- D. Discretionary

**Answer:** D

**NEW QUESTION 471**

- (Exam Topic 1)

An input to Develop Project Charter is a/an:

- A. Business case.
- B. Activity list.
- C. Project management plan.
- D. Cost forecast.

**Answer:** A

**NEW QUESTION 475**

- (Exam Topic 1)

A method of obtaining early feedback on requirements by providing a working model of the expected product before actually building is known as:

- A. Benchmarking.
- B. Context diagrams.
- C. Brainstorming.
- D. Prototyping.

**Answer:** D

**NEW QUESTION 480**

- (Exam Topic 1)

A reward can only be effective if it is:

- A. Given immediately after the project is completed.
- B. Something that is tangible.
- C. Formally given during project performance appraisals.
- D. Satisfying a need valued by the individual.

**Answer:** D

**NEW QUESTION 482**

- (Exam Topic 1)

An output of the Direct and Manage Project Work process is:

- A. Deliverables.
- B. Activity lists.
- C. A work breakdown structure.
- D. A scope statement.

**Answer:** A

**NEW QUESTION 485**

- (Exam Topic 1)

Using values such as scope, cost, budget, and duration or measures of scale such as size, weight, and complexity from a previous similar project as the basis for estimating the same parameter or measurement for a current project describes which type of estimating?

- A. Bottom-up
- B. Parametric
- C. Analogous
- D. Three-point

**Answer:** C

**NEW QUESTION 487**

- (Exam Topic 1)

An input to Close Project or Phase is:

- A. Accepted deliverables,
- B. Final products or services,
- C. Document updates,
- D. Work performance information.

**Answer:** A

**NEW QUESTION 488**

- (Exam Topic 1)  
Which document defines how a project is executed, monitored and controlled, and closed?

- A. Strategic plan
- B. Project charter
- C. Project management plan
- D. Service level agreement

Answer: C

NEW QUESTION 493

- (Exam Topic 1)  
The process of establishing the policies, procedures, and documentation for planning, developing, managing, executing, and controlling the project schedule is known as:

- A. Plan Schedule Management.
- B. Develop Project Charter.
- C. Develop Schedule.
- D. Plan Scope Management.

Answer: A

NEW QUESTION 495

- (Exam Topic 1)  
Processes in the Planning Process Group are typically carried out during which part of the project life cycle?

- A. Only once, at the beginning
- B. At the beginning and the end
- C. Once during each phase
- D. Repeatedly

Answer: D

NEW QUESTION 498

- (Exam Topic 6)  
Which format can a network diagram take?

- A. Flow chart
- B. Control chart
- C. Affinity diagram
- D. Cause-and-effect diagram

Answer: A

NEW QUESTION 501

- (Exam Topic 6)  
What should a project manager use to determine how much money is needed to complete a project?

- A. Earned value management (EVM)
- B. Estimate at completion (EAC)
- C. Earned value analysis (EVA)
- D. Budget at completion (BAG)

Answer: B

NEW QUESTION 506

- (Exam Topic 6)  
Match the influence with its corresponding category of influence.

Influences		Categories of Influence
Marketplace conditions and industry standards		External EEFs
Policies and procedures		Internal enterprise environmental factors (EEFs)
Knowledge bases and lessons learned		Updated OPAs
Resource skills and availability		Non-updated organizational process assets (OPAs)

- A. Mastered
- B. Not Mastered

Answer: A

**Explanation:**



**NEW QUESTION 507**

- (Exam Topic 6)

Why is tailoring in a project necessary?

- A. Requirements keep changing.
- B. An artifact must be produced.
- C. A tool or technique is required.
- D. Each project is unique.

**Answer: D**

**Explanation:**

Each project is unique, and the members of the project team should select the appropriate tools, techniques, inputs, and outputs from the PMBOK Guide.

**NEW QUESTION 512**

- (Exam Topic 6)

Which is the tool or technique that is used to obtain the list of activities from the work packages?

- A. Data analysis
- B. Leads and lags
- C. Precedence diagramming method
- D. Decomposition

**Answer: D**

**NEW QUESTION 517**

- (Exam Topic 6)

Which of the following are processes associated with Project Cost Management?

- A. Develop Cost
- B. Estimate Costs, Determine Budget
- C. Control Costs
- D. Develop Budget, Determine Budget, Determine Risks, Control Costs
- E. Plan Cost Management, Estimate Cost
- F. Determine Budget
- G. Control Costs
- H. Plan Budget Management
- I. Determine Budget, Create Cost Account
- J. Control Costs

**Answer: C**

**NEW QUESTION 521**

- (Exam Topic 6)

Which contract type is least desirable to a vendor?

- A. Fixed price with economic price adjustment (FPEPA)
- B. Firm fixed price (FFP)
- C. Cost plus fixed fee (CPFF)
- D. Cost plus award fee (CPAF)

**Answer: B**

**NEW QUESTION 522**

- (Exam Topic 5)

Which risk response strategy is common for both positive and negative risks?

- A. Share
- B. Accept
- C. Mitigate
- D. Transfer

**Answer:** B

**NEW QUESTION 526**

- (Exam Topic 6)

A project manager is assigned to a strategic project. Senior management asks the project manager to give a presentation in order to request support that will ensure the success of the project.

Which entities will the project manager attempt to influence?

- A. The project and the organization
- B. The organization and the industry
- C. The subject matter experts and the project
- D. The change control board and the organization

**Answer:** D

**NEW QUESTION 528**

- (Exam Topic 5)

Which of the following includes how requirements activities will be planned, tracked, and reported?

- A. Configuration management plan
- B. Scope baseline
- C. Requirements management plan
- D. Schedule baseline

**Answer:** C

**NEW QUESTION 530**

- (Exam Topic 5)

Which type of diagram includes groups of information and shows relationships between factors, causes, and objectives?

- A. Affinity
- B. Scatter
- C. Fishbone
- D. Matrix

**Answer:** D

**NEW QUESTION 533**

- (Exam Topic 5)

Which process requires implementation of approved changes?

- A. Direct and Manage Project Execution
- B. Monitor and Control Project Work
- C. Perform Integrated Change Control
- D. Close Project or Phase

**Answer:** A

**NEW QUESTION 538**

- (Exam Topic 5)

A project manager at a publishing company decides to initiate the editing phase of the project as soon as each chapter is written. Which type of Sequence Activities tool and technique is involved, considering that there was a start-to-start relationship with a 15-day delay?

- A. Slack
- B. Float
- C. Lag
- D. Lead

**Answer:** C

**NEW QUESTION 541**

- (Exam Topic 5)

A tool and technique used during the Collect Requirements process is:

- A. prototypes.
- B. expert judgment.
- C. alternatives identification.
- D. product analysis.

**Answer:** A

**NEW QUESTION 542**

- (Exam Topic 5)

Which of the following is an output of Close Procurements?



- A. Accepted deliverables
- B. Organizational process assets updates
- C. Managing stakeholder expectations
- D. Performance reports

**Answer:** B

**NEW QUESTION 546**

- (Exam Topic 5)

Plan-do-check-act is also known as:

- A. prevention over inspection.
- B. statistical sampling.
- C. management responsibility,
- D. continuous improvement.

**Answer:** D

**NEW QUESTION 547**

- (Exam Topic 5)

During project selection, which factor is most important?

- A. Types of constraints
- B. Internal business needs
- C. Budget
- D. Schedule

**Answer:** B

**NEW QUESTION 552**

- (Exam Topic 5)

The staffing management plan is part of the:

- A. organizational process assets.
- B. resource calendar.
- C. human resource plan.
- D. Develop Project Team process.

**Answer:** C

**NEW QUESTION 555**

- (Exam Topic 5)

Which of the following is a statistical concept that calculates the average outcome when the future includes scenarios that may or may not happen?

- A. Sensitivity analysis
- B. Three-point estimate
- C. Modeling and simulation
- D. Expected monetary value analysis

**Answer:** D

**NEW QUESTION 559**

- (Exam Topic 5)

Which of the following are three inputs to the risk register?

- A. Risk register updates, stakeholder register, and quality management plan
- B. Communication management plan, enterprise environmental factors, and activity duration estimates
- C. Risk management plan, activity cost estimates, and project documents
- D. Project scope statement, organizational process assets, and scope baseline

**Answer:** C

**NEW QUESTION 560**

- (Exam Topic 5)

A project lifecycle is defined as:

- A. a collection of generally sequential and sometimes overlapping project phases.
- B. a process required to ensure that the project includes all the work required, and only the work required, to complete the project successfully.
- C. a recognized standard for the project management profession.
- D. the application of knowledge, skills, tools, and techniques to project activities to meet the project requirements.

**Answer:** A

**NEW QUESTION 565**

- (Exam Topic 5)

The project management processes are usually presented as discrete processes with defined interfaces, while in practice they:

- A. operate separately.
- B. move together in batches,
- C. overlap and interact.
- D. move in a sequence.

**Answer: C**

#### **NEW QUESTION 569**

- (Exam Topic 5)

Projects are separated into phases or subprojects; these phases include:

- A. feasibility study, concept development, design, and prototype.
- B. initiate, plan, execute, and monitor.
- C. Develop Charter, Define Activities, Manage Stakeholder Expectations, and Report Performance.
- D. Identify Stakeholders, develop concept, build, and test.

**Answer: A**

#### **NEW QUESTION 573**

- (Exam Topic 5)

An input to the Estimate Activity Resources process is:

- A. Activity resource requirements.
- B. Published estimating data.
- C. Resource calendars.
- D. Resource breakdown structure (RBS).

**Answer: C**

#### **NEW QUESTION 577**

- (Exam Topic 5)

Which baselines make up the performance measurement baseline?

- A. Scope baseline, cost baseline, and schedule baseline
- B. Scope baseline, project management baseline, and quality baseline
- C. Cost baseline, schedule baseline, and risk baseline
- D. Cost baseline, project management baseline, and schedule baseline

**Answer: A**

#### **NEW QUESTION 579**

- (Exam Topic 5)

The process of identifying specific actions to be performed to produce project deliverables is:

- A. Define Activities.
- B. Create WBS.
- C. Define Scope.
- D. Develop Schedule.

**Answer: A**

#### **NEW QUESTION 584**

- (Exam Topic 5)

The application of knowledge, skills, tools, and techniques to project activities to meet project requirements describes management of which of the following?

- A. Project
- B. Scope
- C. Contract
- D. Program

**Answer: A**

#### **NEW QUESTION 585**

- (Exam Topic 5)

The probability and impact matrix is primarily used to:

- A. Quantify risk issues for trends during a quality audit.
- B. Develop a risk register for risk planning.
- C. Evaluate each risk's importance and priority during Perform Qualitative Risk Analysis.
- D. Define risk and compare impacts during Perform Quantitative Risk Analysis.

**Answer: C**

#### **NEW QUESTION 590**



- (Exam Topic 5)

In the basic communication model, which term refers to the method that is used to convey the message?

- A. Decode
- B. Encode
- C. Medium
- D. Noise

**Answer:** C

#### **NEW QUESTION 595**

- (Exam Topic 5)

The technique of subdividing project deliverables into smaller, more manageable components until the work and deliverables are defined to the work package level is called:

- A. a control chart.
- B. baseline.
- C. Create WBS.
- D. decomposition.

**Answer:** D

#### **NEW QUESTION 600**

- (Exam Topic 5)

While preparing the project management plan on a weekly basis, the project manager indicates the intention to provide an issues report to the staff via e-mail. In which part of the plan will this type of information be included?

- A. Communications management plan
- B. Human resource plan
- C. Quality management plan
- D. Procurement management plan

**Answer:** A

#### **NEW QUESTION 603**

- (Exam Topic 5)

Who is responsible for initiating a project?

- A. Project sponsor
- B. Project manager
- C. Program manager
- D. Project management office (PMO)

**Answer:** A

#### **NEW QUESTION 607**

- (Exam Topic 5)

Requirements documentation, requirements management plan, and requirements traceability matrix are all outputs of which process?

- A. Control Scope
- B. Collect Requirements
- C. Create WBS
- D. Define Scope

**Answer:** B

#### **NEW QUESTION 610**

- (Exam Topic 5)

What is project management?

- A. A logical grouping of project management inputs, outputs, tools, and techniques
- B. Applying knowledge, skills, tools, and techniques to project activities to meet the project requirements
- C. Launching a process that can result in the authorization of a new project
- D. A formal, approved document that defines how the project is executed, monitored, and controlled

**Answer:** B

#### **NEW QUESTION 613**

- (Exam Topic 5)

Which of the following is a tool or technique used in the Acquire Project Team process?

- A. Networking
- B. Training
- C. Negotiation
- D. Issue log

**Answer:** C

**NEW QUESTION 614**

- (Exam Topic 5)

Which is one of the determining factors used to calculate CPI?

- A. EV
- B. SPI
- C. PV
- D. ETC

**Answer:** A

**NEW QUESTION 615**

- (Exam Topic 5)

Which activity may occur at project or phase closure?

- A. Acceptance of deliverables
- B. Change requests
- C. Project management plan updates
- D. Benchmarking

**Answer:** A

**NEW QUESTION 616**

- (Exam Topic 5)

Which quality control technique illustrates the 80/20 principle?

- A. Ishikawa diagram
- B. Control chart
- C. Run chart
- D. Pareto chart

**Answer:** D

**NEW QUESTION 621**

- (Exam Topic 5)

Which of the following can be used as an input for Define Scope?

- A. Product analysis
- B. Project charter
- C. Scope baseline
- D. Project scope statement

**Answer:** B

**NEW QUESTION 623**

- (Exam Topic 5)

How should a stakeholder who is classified as high power and low interest be grouped in a power/interest grid during stakeholder analysis?

- A. Keep satisfied
- B. Keep informed
- C. Manage closely
- D. Monitor

**Answer:** A

**NEW QUESTION 627**

- (Exam Topic 4)

Which of the following correctly explains the term "progressive elaboration"?

- A. Changing project specifications continuously
- B. Elaborate tracking of the project progress
- C. Elaborate tracking of the project specifications with a change control system
- D. Project specifications becoming more explicit and detailed as the project progresses

**Answer:** D

**NEW QUESTION 628**

- (Exam Topic 4)

In a construction project schedule, what is the logical relationship between the delivery of the concrete materials and the pouring of concrete?

- A. Start-to-start (SS)
- B. Start-to-finish (SF)
- C. Finish-to-finish (FF)
- D. Finish-to-start (FS)

**Answer:**

D

**NEW QUESTION 631**

- (Exam Topic 4)

Which of the following is a conflict resolution technique that emphasizes areas of agreement rather than areas of difference?

- A. Compromising
- B. Collaborating
- C. Smoothing
- D. Problem Solving

**Answer: C**

**NEW QUESTION 635**

- (Exam Topic 4)

Which of the following is a set of interrelated actions and activities performed to achieve a prespecified product, result, or service?

- A. Portfolio
- B. Process
- C. Project
- D. Program

**Answer: B**

**NEW QUESTION 640**

- (Exam Topic 4)

What is the primary benefit of meeting quality requirements?

- A. Quality metrics
- B. Less rework
- C. Quality control measurements
- D. Benchmarking

**Answer: B**

**NEW QUESTION 642**

- (Exam Topic 4)

Which of the following characteristics are found in a functional organizational structure?

- A. Little or no project manager authority, little or no resource availability, and the functional manager controls the project budget
- B. Limited project manager authority, limited resource availability, and a part-time project manager's role
- C. Low to moderate project manager authority, low to moderate resource availability, and a full-time project manager's role
- D. High to almost total project manager authority, high to almost total resource availability, and full-time project management administrative staff

**Answer: A**

**NEW QUESTION 643**

- (Exam Topic 4)

Documented identification of a flaw in a project component together with a recommendation is termed a:

- A. corrective action.
- B. preventive action.
- C. non-conformance report,
- D. defect repair.

**Answer: D**

**NEW QUESTION 648**

- (Exam Topic 4)

Which piece of information is part of the WBS Dictionary?

- A. Responsible organization
- B. Change requests
- C. Validated deliverables
- D. Organizational process assets

**Answer: A**

**NEW QUESTION 649**

- (Exam Topic 4)

In the Estimate Activity Durations process, productivity metrics and published commercial information inputs are part of the:

- A. enterprise environmental factors.
- B. organizational process assets.
- C. project management plan,
- D. project funding requirements.

**Answer:** A

**NEW QUESTION 650**

- (Exam Topic 4)

Which tool or technique is used in Manage Stakeholder Expectations?

- A. Stakeholder management strategy
- B. Communication methods
- C. Issue log
- D. Change requests

**Answer:** B

**NEW QUESTION 651**

- (Exam Topic 4)

Who provides the inputs for the original estimates of activity durations for tasks on the project plan?

- A. Project sponsor
- B. Project manager
- C. Person responsible for project scheduling
- D. Person who is most familiar with the task

**Answer:** D

**NEW QUESTION 653**

- (Exam Topic 4)

The milestone list is an input to which process from the Planning Process Group?

- A. Define Activities
- B. Estimate Activity Durations
- C. Estimate Activity Resources
- D. Sequence Activities

**Answer:** D

**NEW QUESTION 654**

- (Exam Topic 4)

An input to the Perform Quantitative Risk Analysis process is the:

- A. quality management plan.
- B. project management plan.
- C. communications management plan.
- D. schedule management plan.

**Answer:** D

**NEW QUESTION 656**

- (Exam Topic 4)

A weighting system is a tool for which area of Conduct Procurements?

- A. Plan contracting
- B. Requesting seller responses
- C. Selecting seller's
- D. Planning purchase and acquisition

**Answer:** C

**NEW QUESTION 661**

- (Exam Topic 4)

Which of the following strategies is used to deal with risks that may have a negative impact on project objectives?

- A. Exploit
- B. Share
- C. Enhance
- D. Transfer

**Answer:** D

**NEW QUESTION 666**

- (Exam Topic 4)

Which of the following documents allows the project manager to assess risks that may require near term action?

- A. Probability and impact matrix
- B. Contingency analysis report
- C. Risk urgency assessment

D. Rolling wave plan

**Answer:** C

**NEW QUESTION 670**

- (Exam Topic 4)

Which degree of authority does a project manager have on a project in a strong matrix organizational structure?

- A. Limited
- B. Low to moderate
- C. Moderate to high
- D. High to almost total

**Answer:** C

**NEW QUESTION 673**

- (Exam Topic 4)

Which of the following is an input to the Direct and Manage Project Execution process?

- A. Approved change requests
- B. Approved contract documentation
- C. Work performance information
- D. Rejected change requests

**Answer:** A

**NEW QUESTION 678**

- (Exam Topic 4)

Which Perform Quality Control tool graphically represents how various elements of a system interrelate?

- A. Control chart
- B. Flowchart
- C. Run chart
- D. Pareto chart

**Answer:** B

**NEW QUESTION 679**

- (Exam Topic 4)

Labor, materials, equipment, and supplies are examples of:

- A. Resource attributes.
- B. Resource types.
- C. Resource categories.
- D. Resource breakdown structures (RBS).

**Answer:** C

**NEW QUESTION 684**

- (Exam Topic 4)

Which of the following is an output of the Distribute Information process?

- A. Project calendar
- B. Communications management plan
- C. Organizational process assets updates
- D. Project document updates

**Answer:** C

**NEW QUESTION 689**

- (Exam Topic 4)

Change requests, project management plan updates, project document updates, and organizational process assets updates are all outputs of which project management process?

- A. Plan Risk Responses
- B. Manage Stakeholder Expectations
- C. Define Scope
- D. Report Performance

**Answer:** B

**NEW QUESTION 691**

- (Exam Topic 4)

When calculating the cost of quality (COQ) for a product or service, money spent for cost of conformance would include the areas of:

- A. training, testing, and warranty work.
- B. equipment, rework, and scrap.
- C. training, document processes, and inspections.
- D. inspections, rework, and warranty work.

**Answer:** C

#### NEW QUESTION 694

- (Exam Topic 4)

The risk management team of a software project has decided that due to the lack of adequate talent in the company, development of a specific part of the system is under high risk, so the team has decided to outsource it. This is an example of which risk response?

- A. Transfer
- B. Share
- C. Avoid
- D. Accept

**Answer:** A

#### NEW QUESTION 696

- (Exam Topic 4)

The precedence diagramming method (PDM) is also known as:

- A. Arrow Diagram.
- B. Critical Path Methodology (CPM).
- C. Activity-On-Node (AON).
- D. schedule network diagram.

**Answer:** C

#### NEW QUESTION 701

- (Exam Topic 4)

Control charts, flowcharting, histograms, Pareto charts, and scatter diagrams are tools and techniques of which process?

- A. Perform Quality Control
- B. Perform Quality Assurance
- C. Plan Quality
- D. Report Performance

**Answer:** C

#### NEW QUESTION 702

- (Exam Topic 4)

Which of the following is a tool and technique used in the Develop Schedule process?

- A. Three-point estimates
- B. Resource leveling
- C. Precedence diagramming method
- D. Bottom-up estimating

**Answer:** B

#### NEW QUESTION 705

- (Exam Topic 4)

In which Process Group are lessons learned documented?

- A. Planning
- B. Closing
- C. Executing
- D. Initiating

**Answer:** B

#### NEW QUESTION 707

- (Exam Topic 4)

Which type of chart is a graphic representation of a process showing the relationships among process steps?

- A. Control
- B. Bar
- C. Flow
- D. Pareto

**Answer:** C

#### NEW QUESTION 712

- (Exam Topic 4)

To please the customer, a project team member delivers a requirement which is uncontrolled. This is not part of the plan. This describes:

- A. scope creep.
- B. a change request.
- C. work performance information.
- D. deliverables.

**Answer:** A

#### **NEW QUESTION 717**

- (Exam Topic 4)

As the project progresses, which of the following is routinely collected from the project activities?

- A. Communication management activities
- B. Change requests
- C. Configuration verification and audit
- D. Work performance information

**Answer:** D

#### **NEW QUESTION 718**

- (Exam Topic 4)

The progressive detailing of the project management plan is called:

- A. expert judgment.
- B. rolling wave planning.
- C. work performance information.
- D. specification.

**Answer:** B

#### **NEW QUESTION 722**

- (Exam Topic 4)

The purpose of inspection in Perform Quality Control is to keep errors:

- A. in line with a measured degree of conformity.
- B. out of the hands of the customer.
- C. in a specified range of acceptable results.
- D. out of the process.

**Answer:** B

#### **NEW QUESTION 723**

- (Exam Topic 4)

Managing procurement relationships and monitoring contract performance are part of which process?

- A. Conduct Procurements
- B. Plan Procurements
- C. Administer Procurements
- D. Close Procurements

**Answer:** C

#### **NEW QUESTION 725**

- (Exam Topic 4)

Which tool within the Perform Quality Control process identifies whether or not a process has a predictable performance?

- A. Cause and effect diagram
- B. Control charts
- C. Pareto chart
- D. Histogram

**Answer:** B

#### **NEW QUESTION 730**

- (Exam Topic 4)

Which of the following is an information gathering technique in Identify Risks?

- A. Influence diagrams
- B. Brainstorming
- C. Assumption analysis
- D. SWOT analysis

**Answer:** B



#### NEW QUESTION 733

- (Exam Topic 4)

What is the responsibility of the project manager and the functional manager respectively?

- A. Oversight for an administrative area; a facet of the core business
- B. Achieving the project objectives; providing management oversight for an administrative area
- C. A facet of the core business; achieving the project objectives
- D. Both are responsible for achieving the project objectives.

**Answer:** B

#### NEW QUESTION 734

- (Exam Topic 4)

Tools and techniques used for Plan Communications include the communication:

- A. requirements analysis, communication technology, communication models, and communication methods.
- B. methods, stakeholder register, communication technology, and communication models.
- C. requirements, communication technology, communication requirements analysis, and communication methods.
- D. management plan, communication technology, communication models, and communication requirements analysis.

**Answer:** A

#### NEW QUESTION 736

- (Exam Topic 4)

Which technique is commonly used for the Perform Quantitative Risk Analysis process?

- A. Brainstorming
- B. Strategies for opportunities
- C. Decision tree analysis
- D. Risk data quality assessment

**Answer:** C

#### NEW QUESTION 739

- (Exam Topic 4)

Another name for an Ishikawa diagram is:

- A. cause and effect diagram.
- B. control chart.
- C. flowchart.
- D. histogram.

**Answer:** A

#### NEW QUESTION 744

- (Exam Topic 4)

Which of the following is a tool or technique of the Define Activities process?

- A. Rolling wave planning
- B. Precedence diagramming method (PDM)
- C. Alternatives analysis
- D. Parametric estimating

**Answer:** A

#### NEW QUESTION 747

- (Exam Topic 4)

Monte Carlo is which type of risk analysis technique?

- A. Probability
- B. Quantitative
- C. Qualitative
- D. Sensitivity

**Answer:** B

#### NEW QUESTION 752

- (Exam Topic 4)

Which type of analysis is used as a general management technique within the Plan Procurements process?

- A. Risk assessment analysis
- B. Make or buy analysis
- C. Contract value analysis
- D. Cost impact analysis

**Answer:** B



**NEW QUESTION 757**

- (Exam Topic 4)

The process of identifying the stakeholders' information needs is completed during:

- A. Plan Communications.
- B. Manage Stakeholder Expectations.
- C. Stakeholder Analysis.
- D. Identify Stakeholders.

**Answer:** A

**NEW QUESTION 762**

- (Exam Topic 4)

In which domain of project management would a Pareto chart provide useful information?

- A. Project Scope Management
- B. Project Time Management
- C. Project Communications Management
- D. Project Quality Management

**Answer:** D

**NEW QUESTION 764**

- (Exam Topic 4)

Which of the following reduces the probability of potential consequences of project risk events?

- A. Preventive action
- B. Risk management
- C. Corrective action
- D. Defect repair

**Answer:** A

**NEW QUESTION 768**

- (Exam Topic 4)

Testing falls into which of the following categories of cost of quality?

- A. Internal failure costs
- B. Prevention costs
- C. Appraisal costs
- D. External failure costs

**Answer:** C

**NEW QUESTION 769**

- (Exam Topic 4)

In which type of organizational structure are staff members grouped by specialty?

- A. Functional
- B. Projectized
- C. Matrix
- D. Balanced

**Answer:** A

**NEW QUESTION 770**

- (Exam Topic 4)

Which of the following statements is true regarding project and product lifecycles?

- A. A single product lifecycle may consist of multiple project lifecycles.
- B. A product lifecycle is always shorter than the project lifecycle.
- C. A single product lifecycle can only have one project lifecycle.
- D. A single project lifecycle may consist of multiple product lifecycles.

**Answer:** A

**NEW QUESTION 775**

- (Exam Topic 4)

"Tailoring" is defined as the:

- A. effort of addressing each process to determine which are appropriate and their appropriate degree of rigor.
- B. act of creating a project team with the specialized skills required to produce a required product or service.
- C. action taken to bring a defective or nonconforming component into compliance with requirements or specifications.
- D. adjustment of the respective influences of time, cost, and quality in order to most efficiently achieve scope.

**Answer:**

A

**NEW QUESTION 779**

- (Exam Topic 4)

Which can be used to determine whether a process is stable or has predictable performance?

- A. Matrix diagram
- B. Histogram
- C. Control chart
- D. Flowchart

**Answer: C**

**NEW QUESTION 783**

- (Exam Topic 4)

Change request status updates are an output of which process?

- A. Perform Integrated Change Control
- B. Direct and Manage Project Execution
- C. Close Project or Phase
- D. Monitor and Control Project Work

**Answer: A**

**NEW QUESTION 785**

- (Exam Topic 4)

Define Activities and Estimate Activity Resources are processes in which project management Knowledge Area?

- A. Project Time Management
- B. Project Cost Management
- C. Project Scope Management
- D. Project Human Resource Management

**Answer: A**

**NEW QUESTION 788**

- (Exam Topic 6)

A project manager is searching for solutions that bring some degree of satisfaction to all parties in order to temporarily resolve a conflict. What conflict management technique is described in this situation?

- A. Withdraw/avoid
- B. Smooth /accommodate
- C. Collaborate/problem solve
- D. Compromise/ reconcile

**Answer: D**

**NEW QUESTION 792**

- (Exam Topic 6)

Which tool should a project manager consider to deal with multiple sources of risk?

- A. An updated risk register
- B. Risk breakdown structure
- C. Issue log
- D. Stakeholder register

**Answer: B**

**NEW QUESTION 796**

- (Exam Topic 6)

A project manager has just completed several brainstorming sessions and has gathered the data to show commonality and differences in one single place. What technique was followed?

- A. Collective decision making
- B. Multicriteria decision analysis
- C. Mind mapping
- D. Affinity diagram

**Answer: C**

**NEW QUESTION 800**

- (Exam Topic 6)

Which process is engaged when a project team member makes a change to project budget with the project manager's approval?

- A. Manage Cost Plan
- B. Estimate Costs

- C. Determine Budget
- D. Control Costs

**Answer:** A

**NEW QUESTION 802**

- (Exam Topic 6)

To which knowledge area does the Collect Requirements process belong?

- A. Quality Management
- B. Scope Management
- C. Cost Management
- D. Integration Management

**Answer:** B

**NEW QUESTION 806**

- (Exam Topic 6)

A project manager is working in an environment where requirements are not very clear and may change during the project. In addition, the project has several stakeholders and is technically complex.

Which strategies should the project manager take into account for risk management in this environment?

- A. Occasionally identify, evaluate, and classify risks.
- B. Review requirements and cross-functional project teams.
- C. Include contingency reserves and update the project management plan frequently.
- D. Frequently review incremental work products and update the requirements for proper prioritization.

**Answer:** D

**NEW QUESTION 810**

- (Exam Topic 6)

Which are the main objectives of Project Risk Management?

- A. Increase the probability of positive risks and decrease the probability of negative risks
- B. Avoid all kind of risks
- C. Increase the probability of positive risks and eliminate all negative risks
- D. Identify positive and negative risks

**Answer:** A

**NEW QUESTION 812**

- (Exam Topic 6)

Stakeholder identification and engagement should begin during what phase of the project?

- A. After the project management plan is completed
- B. After the stakeholder engagement plan is completed
- C. As soon as the project charter has been approved
- D. After the communications management plan is completed

**Answer:** A

**NEW QUESTION 814**

- (Exam Topic 6)

Which tools and techniques will a project manager use to develop a project charter?

- A. Project manager experience, expert judgment, scope statement, and meetings
- B. Lessons learned databas
- C. Interpersonal and team skills, cost baseline, and meetings
- D. Expert judgment, data gatherin
- E. scope statement, schedule baseline, and meetings
- F. Expert judgment, data gatherin
- G. interpersonal and team skills, and meetings

**Answer:** D

**NEW QUESTION 818**

- (Exam Topic 6)

The Agile principle "welcome changing requirement, even late in development" relates to which agile manifesto?

- A. Working software over comprehensive documentation
- B. Individuals and interactions over processes and tools
- C. Customer collaboration over contract negotiation
- D. Responding to change over following a plan

**Answer:** D

#### NEW QUESTION 823

- (Exam Topic 6)

What is one of the main purposes of the project charter?

- A. Formal authorization of the existence of the project
- B. Formal acceptance of the project management plan
- C. Formal approval of the detailed project budget
- D. Formal definition of stakeholder roles and responsibilities

**Answer:** A

#### NEW QUESTION 828

- (Exam Topic 6)

Responsible, accountable, consult and inform (RACI) is an example of which of the following?

- A. Text-oriented formal
- B. Resource management plan
- C. Organization chart
- D. Responsibility assignment matrix (RAM)

**Answer:** D

#### NEW QUESTION 832

- (Exam Topic 6)

If you established a contingency reserve including time, money, and resources, how are you handling risk?

- A. Accepting
- B. Transferring
- C. Avoiding
- D. Mitigating

**Answer:** A

#### NEW QUESTION 837

- (Exam Topic 6)

Which of the following describes the similarities of the process groups and project life cycle?

- A. The life cycle involves three project management process groups.
- B. Both provide a basic framework to manage the project.
- C. Each project must have a life cycle and all processes in the five process groups.
- D. The project life cycle is managed by executing the processes within the five process groups.

**Answer:** C

#### NEW QUESTION 839

- (Exam Topic 6)

Directing another person to get from one point to another using a known set of expected behaviors and the ability to lead a team and inspire them to do their jobs well is related to?

- A. Influence and challenge
- B. Innovation and administration
- C. Leadership and management
- D. Engagement and guidance

**Answer:** C

#### NEW QUESTION 840

- (Exam Topic 6)

Company A has just been notified about a new legal requirement for its business operations. What is the classification of this item?

- A. Internal enterprise environmental factor
- B. Risk register database
- C. External enterprise environmental factor
- D. Organizational process asset

**Answer:** C

#### NEW QUESTION 843

- (Exam Topic 6)

A new project has been set. Four main stakeholders besides the project manager and four other team members have been identified. How many communication channels are available?

- A. 8
- B. 18
- C. 36
- D. 40

Answer: C

#### NEW QUESTION 846

- (Exam Topic 6)

A team receives four different requests from separate stakeholders related to one application Match each requirement with its corresponding type of change request.

Requirement		Type of Change Request
Add new functionality to the application		Update
Recover from a three-day delay		Defect repair
Reduce login time due to a corrupt login script		Preventive action
Install alarms to alert for non-conformances		Corrective action

- A. Mastered
- B. Not Mastered

Answer: A

#### Explanation:

Requirement		Type of Change Request
Add new functionality to the application	Add new functionality to the application	Update
Recover from a three-day delay	Install alarms to alert for non-conformances	Defect repair
Reduce login time due to a corrupt login script	Recover from a three-day delay	Preventive action
Install alarms to alert for non-conformances	Reduce login time due to a corrupt login script	Corrective action

#### NEW QUESTION 848

- (Exam Topic 6)

A project manager held a meeting and listed all team members' ideas for improving the product on a white board. What data gathering technique did the project manager apply?

- A. Focus groups
- B. Interviews
- C. Brainstorming
- D. Delphi technique

Answer: C

#### NEW QUESTION 852

- (Exam Topic 6)

A functional manager is delegating a key project to a project team without a project manager. Which communication method will be most effective?

- A. Interactive
- B. Push
- C. Verbal
- D. Oral

Answer: A

#### NEW QUESTION 853

- (Exam Topic 6)

The project manager is working in the processes of Project Resource Management. Which process is the project manager developing if they are using parametric estimation?

- A. Plan Resource Management
- B. Estimate Activity Resources
- C. Estimate Costs
- D. Acquire Resources

Answer: B

#### NEW QUESTION 858

- (Exam Topic 6)

What organizational asset can influence the Plan Risk Management process?

- A. Corporate policies and procedures for social media, ethics, and security
- B. Organizational risk policy
- C. Stakeholder register templates and instructions
- D. Organizational communication requirements

**Answer:** C

**NEW QUESTION 863**

- (Exam Topic 6)

A firm contracted an event management company to conduct the annual sales day event. The agreement states that the event management company will charge the firm for the actuals and receive 8% of the total cost. What type of contract is this?

- A. Time and material (T&M)
- B. Fixed price incentive fee (FPIF)
- C. Cost plus fixed fee (CPFF)
- D. Cost plus award fee (CPAF)

**Answer:** C

**NEW QUESTION 867**

- (Exam Topic 6)

Which of the following tasks focuses on decomposing work packages?

- A. Adjust duration estimates
- B. Define activities
- C. Complete rolling wave planning
- D. Develop milestone list

**Answer:** C

**NEW QUESTION 869**

- (Exam Topic 6)

Deciding the phases of a project life cycle would be considered a part of which of these knowledge areas?

- A. Project Schedule Management
- B. Project Scope Management
- C. Project Resource Management
- D. Project Integration Management

**Answer:** D

**NEW QUESTION 872**

- (Exam Topic 6)

What type of meeting is held to discuss prioritized product backlog items?

- A. Status
- B. Daily standup
- C. Iteration planning
- D. Release planning

**Answer:** C

**NEW QUESTION 874**

- (Exam Topic 6)

What important leadership quality/qualities should project managers possess?

- A. Skills and behaviors related to specific domains of project management
- B. Skills and behaviors needed to guide a team and help an organization reach its goals
- C. Industry expertise that helps to better deliver business outcomes
- D. Industry and organizational expertise that enhances performance

**Answer:** C

**NEW QUESTION 875**

- (Exam Topic 6)

How is program success measured?

- A. By delivering the benefit of managing the program's projects in a coordinated manner
- B. By the quality, timeliness, cost-effectiveness
- C. and customer satisfaction of the product or service
- D. By completing the right projects to achieve objectives rather than completing projects the right way
- E. By aggregating the successes of the individual projects in the program

**Answer:** A

**NEW QUESTION 880**



- (Exam Topic 6)

How can a project manager evaluate project team development?

- A. Produce team performance assessments.
- B. Hold weekly meetings to engage every member
- C. Complete a personal skill assessment on each team member
- D. Provide recognition awards to team members

**Answer:** A

#### NEW QUESTION 881

- (Exam Topic 6)

Which is the best way for a project manager to ensure efficient and frequent communication with management and stakeholders in an agile/adaptive environment?

- A. Post project artifacts in a transparent fashion and engage stakeholders on a regular basis.
- B. Make surveys among the stakeholders and meet with the team once a month.
- C. Create a social network and post news there.
- D. Create personalized emails for each stakeholder, asking for requests and reviewing objectives with them periodically.

**Answer:** A

#### NEW QUESTION 886

- (Exam Topic 6)

A sponsor asks a project manager to provide a project's expected total costs based on its progress. What formula should the project manager use to determine this?

- A. Earned value (EV) / actual cost (AC)
- B. Estimate at completion (EAC) - AC
- C. Budget at completion (BAC) / cost performance index (CPI)
- D. EV - planned value (PV)

**Answer:** B

#### NEW QUESTION 888

- (Exam Topic 6)

What can increase the complexity of the Manage Stakeholder Engagement process?

- A. The project must be of high quality.
- B. The stakeholders are from different countries.
- C. The project must comply with strict local government regulations.
- D. The project has a tight budget and timeline.

**Answer:** B

#### NEW QUESTION 890

- (Exam Topic 6)

Which are inputs for the Plan Quality Management process?

- A. Quality metrics, project documents, and financial performance
- B. Quality management plan, project documents, and quality metrics
- C. Project management plan, project documents, and organizational process assets
- D. Project management plan, quality metric
- E. and project documents

**Answer:** C

#### NEW QUESTION 891

- (Exam Topic 6)

Which are examples of processes that may be used once or at predefined points in the project life cycle?

- A. Develop Project Charter and Close Project or Phase
- B. Define Activities and Acquire Resources
- C. Control Schedule and Conduct Procurements
- D. Monitor Communications and Control Costs

**Answer:** A

#### NEW QUESTION 896

- (Exam Topic 6)

Which of the following is an example of tacit knowledge?

- A. Risk register
- B. Project requirements
- C. Expert judgment
- D. Make-or-buy analysis

**Answer:** C



**NEW QUESTION 900**

- (Exam Topic 6)

Which of the following is an example of an organizational system that is arranged based on the job being performed?

- A. Simple
- B. Multi-divisional
- C. Functional
- D. Project-oriented

**Answer: C**

**NEW QUESTION 905**

- (Exam Topic 6)

A project is in progress and about to move to a different phase, according to the plan. This will be a good opportunity for the project manager to:

- A. create the project management plan.
- B. identify the project objectives.
- C. review and update stakeholder engagement.
- D. create the schedule baseline.

**Answer: C**

**NEW QUESTION 910**

- (Exam Topic 6)

When should Project Risk Management be conducted?

- A. Project Planning
- B. Monitoring and Controlling
- C. Quality Planning
- D. Throughout the project lifecycle

**Answer: C**

**NEW QUESTION 912**

- (Exam Topic 6)

When project requirements are documented in user stories then prioritized and refined just prior to construction, which approach is being used for scheduling?

- A. Iterative scheduling with backlog
- B. On-demand scheduling
- C. Life cycle scheduling with backlog
- D. Defining Iterative activities

**Answer: A**

**NEW QUESTION 917**

- (Exam Topic 6)

What is a tailoring consideration in Project Integration Management?

- A. Validation and control
- B. Benefits
- C. Technology support
- D. Physical location

**Answer: A**

**NEW QUESTION 921**

- (Exam Topic 6)

What are the inputs of the Estimate Costs process?

- A. Project management plan, work performance data, enterprise environmental factors, and organizational process assets
- B. Project management plan, project documents, enterprise environmental factors, and organizational process assets
- C. Cost baseline, enterprise environmental factors, benefits management plan, and organizational process assets
- D. Project management plan, enterprise environmental factors, basis of estimates, and organizational process assets

**Answer: C**

**NEW QUESTION 923**

- (Exam Topic 6)

How can a project manager determine if the project activities comply with organizational and project policies, processes, and procedures?

- A. Look at the quality metrics.
- B. Validate the scope.
- C. Review the quality checklist.
- D. Conduct a quality audit.

**Answer:**

D

**NEW QUESTION 927**

- (Exam Topic 6)

A project manager is identifying the risks of a project. Which technique should the project manager use?

- A. Representations of uncertainty
- B. Prompt lists
- C. Audits
- D. Risk categorization

**Answer: B**

**NEW QUESTION 931**

- (Exam Topic 6)

A project manager needs to tailor the Project Cost Management process. Which considerations should the project manager apply?

- A. Diversity background
- B. Stakeholder's relationships
- C. Technical expertise
- D. Knowledge management

**Answer: D**

**NEW QUESTION 935**

- (Exam Topic 6)

A project has an estimated duration of 10 months with a total budget of US\$220,000. At the end of the fifth month, it is estimated that at completion, the project will incur US\$250,000. If the actual cost (AC) calculated is US\$150,000, what is the earned value (EV) of the project?

- A. US\$-30,000
- B. US\$120,000
- C. US\$370,000
- D. US\$400,000

**Answer: D**

**NEW QUESTION 937**

- (Exam Topic 6)

If you are using an Ishikawa diagram to determine the root cause of problems, which process are you engaged in?

- A. Plan Quality Management
- B. Control Quality
- C. Risk Management
- D. Plan Scope Management

**Answer: B**

**NEW QUESTION 938**

- (Exam Topic 6)

Which of the following can a project manager use to represent defined team member roles in a group of tasks?

- A. Work breakdown structure (WBS)
- B. Responsibility assignment matrix (RAM)
- C. Organizational breakdown structure (OBS)
- D. Resource breakdown structure (RBS)

**Answer: B**

**NEW QUESTION 942**

- (Exam Topic 6)

Under which circumstances should multiple projects be grouped in a program?

- A. When they are needed to accomplish a set of goals and objectives for an organization
- B. When they have the same project manager and the same organizational unit
- C. When they have the same scope, budget, and schedule
- D. When they are from the same unit of the organization

**Answer: A**

**NEW QUESTION 943**

- (Exam Topic 6)

A project using the agile/adaptive approach has reached the Project Integration Management phase. What is the project manager's key responsibility during this phase?

- A. Defining the scope of the project
- B. Building a collaborative environment

- C. Creating a detailed project management plan
- D. Directing the delivery of the project

**Answer:** B

**Explanation:**

PMBOK pg. 74 Considerations for Agile Adaptive Environments: PjM's focus is on building a collaborative decision-making environment and ensuring team has ability to respond to changes.

**NEW QUESTION 945**

- (Exam Topic 6)

Which of the following technology platforms is most effective for sharing information when managing virtual project teams?

- A. Video conferencing
- B. Audio conferencing
- C. Shared portal
- D. Email/chat

**Answer:** D

**NEW QUESTION 948**

- (Exam Topic 6)

An important project stakeholder has low risk tolerance. Which type of communication should a project manager use to provide this stakeholder with a difficult update?

- A. Informal conversation
- B. Face-to-face meeting
- C. Short email update
- D. Written report

**Answer:** A

**NEW QUESTION 952**

- (Exam Topic 6)

What purpose does the hierarchical locus of stakeholder communications serve?

- A. Maintains the focus on project and organizational stakeholders
- B. Preserves the focus on external stakeholders—such as customers and vendors—as well as on other projects
- C. Sustains the focus on general communication activities using email, social media, and websites
- D. Keeps the focus on the position of the stakeholder or group with respect to the project team

**Answer:** C

**NEW QUESTION 955**

- (Exam Topic 6)

A company must implement sales software because it is opening a new branch in a foreign market. Although this software is used in every domestic branch, multiple changes are expected during the implementation because it is a foreign location.

Which type of life cycle would the project manager use in this case?

- A. Predictive life cycle
- B. Waterfall life cycle
- C. Hybrid life cycle
- D. Product life cycle

**Answer:** C

**NEW QUESTION 960**

- (Exam Topic 6)

In a project using agile methodology, who may perform the quality control activities?

- A. A group of quality experts at specific times during the project
- B. The project manager only
- C. All team members throughout the project life cycle
- D. Selected stakeholders at specific times during the project

**Answer:** C

**NEW QUESTION 963**

- (Exam Topic 6)

Analyzing activity sequences, durations, resource requirements, and schedule constraints for project execution and monitoring and controlling relates to which process?

- A. Develop Schedule
- B. Control Schedule
- C. Estimate Activity Durations
- D. Define Activities

**Answer:** A

**NEW QUESTION 968**

- (Exam Topic 6)

Which two processes should be used to influence costs in the early stages of a project?

- A. Estimate Costs and Determine Budget
- B. Plan Cost Management and Estimate Activity Durations
- C. Control Quality and Control Costs
- D. Plan Stakeholder Engagement and Plan Communications Management

**Answer:** A

**NEW QUESTION 969**

- (Exam Topic 6)

When developing the project schedule, a project manager uses decomposition and rolling wave planning techniques in this process.

- A. Develop Schedule
- B. Define Activities
- C. Define Scope
- D. Collect Requirements

**Answer:** B

**NEW QUESTION 970**

- (Exam Topic 6)

What scenario describes when a project must be created due to market demand?

- A. A public company authorizes a project to create a new service for electric car sharing to reduce pollution.
- B. A car company authorizes a project to build more fuel-efficient cars in response to gasoline shortages.
- C. Researchers develop an autonomous car.
- D. with several new features to be commercialized in the future.
- E. Stakeholders request that raw materials be changed due to locally high costs.

**Answer:** B

**NEW QUESTION 975**

- (Exam Topic 6)

Which action should the project manager take after the team finishes executing the scope?

- A. Verify the deliverables to ensure that they are correct and meet the customer's satisfaction.
- B. Accept all the deliverables and deliver them to the customer for final acceptance.
- C. Conduct a joint session with the customer, change the deliverables, and then request approval.
- D. Check that all change requests were implemented and release deliverables to the customer.

**Answer:** A

**NEW QUESTION 976**

- (Exam Topic 6)

A project stakeholder is requesting changes to the project plan. Which process group addresses this?

- A. Initiating Process Group
- B. Planning Process Group
- C. Executing Process Group
- D. Monitoring and Controlling Process Group

**Answer:** D

**NEW QUESTION 980**

- (Exam Topic 6)

During which process of Project Cost Management does a project manager produce the cost baseline?

- A. Estimate Costs
- B. Control Schedule
- C. Determine Budget
- D. Develop Project Charter

**Answer:** C

**NEW QUESTION 983**

- (Exam Topic 6)

Which of the following are outputs of the Define Scope process in Project Scope Management?

- A. Requirements documentation and requirements traceability matrix

- B. Scope management plan and requirements management plan
- C. Project scope statement and project documents updates
- D. Scope baseline and project documents updates

**Answer:** D

**NEW QUESTION 984**

.....

## Thank You for Trying Our Product

### We offer two products:

1st - We have Practice Tests Software with Actual Exam Questions

2nd - Questions and Answers in PDF Format

### CAPM Practice Exam Features:

- \* CAPM Questions and Answers Updated Frequently
- \* CAPM Practice Questions Verified by Expert Senior Certified Staff
- \* CAPM Most Realistic Questions that Guarantee you a Pass on Your First Try
- \* CAPM Practice Test Questions in Multiple Choice Formats and Updates for 1 Year

**100% Actual & Verified — Instant Download, Please Click**  
**[Order The CAPM Practice Test Here](#)**