

Oracle

Exam Questions 1Z0-518

Oracle EBS R12.1 Receivables Essentials



NEW QUESTION 1

You are Involved In a project to upgrade to Oracle E-Business Suite, Release 12. You need more Information about the upgrade processes and paths. Where would you find the upgrade guide for Oracle E-Business Suite?

- A. AppsNet
- B. Bug Database
- C. Technical Forums
- D. Metal ink Knowledge Base
- E. Oracle Technology Network
- F. Customer Knowledge Exchange

Answer: D

NEW QUESTION 2

Identify four tasks that you can perform using Oracle Workflow in Oracle E-Business Suite Release 12, (choose four}

- A. Automata business processes,
- B. Generate account code combinations,
- C. Approve standard business documents,
- D. Send notifications using Advanced Queuing,
- E. Generate Inventory item numbers using item generator workflow,
- F. Integrate with third party business systems that are not on a company network.

Answer: ABDF

NEW QUESTION 3

Identify two correct statements related to Key Performance Indicators and the KPI region in Daily Business Intelligence. (Choose two.)

- A. can be of table format only
- B. can be configured for each dashboard
- C. organizes data into reporting hierarchies
- D. is a strategic business factor that is used for reporting
- E. contains a unique set of graphical information on a dashboard

Answer: BD

NEW QUESTION 4

The organization that Receivables uses to validate items is set up using_____.

- A. the AR: Items Flexfield Mode profile option
- B. the AR: Allow Manual Invoice Lines profile option
- C. the AR: Item Validation Organization profile option
- D. item validation organization In the OM Parameters window

Answer: C

NEW QUESTION 5

Select three statements that apply to IReceivables. (Choose three.)

- A. It Is a Web-based self-service application.
- B. It can be used to verify the status of Invoices and receipts.
- C. It is geared towards call centers, as well as credit and collections departments.
- D. It can be used to initiate the Oracle Approvals Management (AME) credit memo request workflow.

Answer: ABD

NEW QUESTION 6

Which three statements are true about Balance Forward Billing? (Choose three.)

- A. Billing date is an optional grouping rule.
- B. Billing date value is mandatory when cycle is external.
- C. Accept Consolidated Billing Invoices program is available.
- D. Print New Consolidated Billing Invoices program is available.
- E. It considers both manual transactions and imported transactions.
- F. Activity can be consolidated across account sites, or by each billing site.

Answer: BEF

NEW QUESTION 7

You are Involved In a project to upgrade to Oracle E-Business Suite, Release 12. You need more information about the upgrade processes and paths. Where would you find the upgrade guide for Oracle E-Business Suite?

- A. AppsNet
- B. Bug Database
- C. Technical Forums

- D. MetaLink Knowledge Base
- E. Oracle Technology Network
- F. Customer Knowledge Exchange

Answer: D

NEW QUESTION 8

Identify four discount basis options available that define how Receivable calculates discounters (Choose four.)

- A. gross amount
- B. freight amount
- C. Invoice amount
- D. lines only amount
- E. lines and tax amount
- F. lines, freight, and tax amount

Answer: CDEF

NEW QUESTION 9

Which four transactions are improved by Autolvoice? (Choose four)

- A. invoices
- B. deposits
- C. guarantees
- D. debit memos
- E. credit memos
- F. on-account credits

Answer: ADEF

NEW QUESTION 10

Select two features regarding the completion of a successful customer merge in Oracle Receivables that support ongoing customer data cleansing efforts after go-live. (Choose two.)

- A. Customer merge activity can be reversed after the merge process.
- B. Bank details for the merge-from customer remains available after the merge process.
- C. Duplicate parties are re pointed to the surviving party after the customer merge process.
- D. Duplicate customers are repointed to the surviving customer after the customer merge process.
- E. Customer sites associated with the old customer or site are associated with the new customer or site after the customer merge process.
- F. Customer transactions or audit transactions details for the merge-from customer remain available for reprinting after the customer merge process.

Answer: DE

NEW QUESTION 10

Oracle Credit Management (OCM) uses lookups to help speed up data entry and increase accuracy. Select two required lookups used by OCM. (Choose two.)

- A. risk code
- B. credit rating
- C. payment terms
- D. credit review type
- E. credit classification

Answer: DE

NEW QUESTION 15

Your client has requirements to enter customers, suppliers, and remit-to addresses In countryspecific formats for the United States, United Kingdom, and Ireland. Which are the three steps required to set up new flexible address formats in Oracle Applications? (Choose three.)

- A. creating address style lookup
- B. creating flexible address code
- C. setting up the "Default Address" profile option
- D. assigning address style to a specific country
- E. setting up flexible address format in a descriptive flexfield

Answer: ADE

NEW QUESTION 18

Horizon Real Estate Company usually Issues rent Invoices to its tenants at the beginning of every quarter. It recognizes the monthly rent revenue on the first day of each month. However, some tenants are required to make the monthly rent payments in two installments that is on the 15th and the fast day of the month. Which two statements are correct about the possible solutions for this business requirement? (Choose two.)

- A. Payment term can be set to defer the monthly rent revenue.
- B. Invoicing rules can be set to defer the monthly rent revenue.
- C. Accounting rules can be set to defer the monthly rent revenue.
- D. Payment term can be set to allow customers to make payments in two installments.
- E. Invoicing rules can be set to allow customers to make payments in two installments.
- F. Accounting rules can be set to allow customers to make payments in two installments.

Answer: CD

NEW QUESTION 23

Which three statements are true about AutoInvoice? (Choose three)

- A. it determine the General Ledger (GL) accounts by using AutoAccounting.
- B. It imports Invoices that have only transaction types that are of the "Imported" translation class.
- C. It determine the GL accounts from the rows in the RA_INTERFACE_DISTRIBUTIONS_ALL table.
- D. It determine whether the invoice should have open or closed status on the basic of the line amount.
- E. It uses the AutoInvoice clearing account if it cannot determine the Receivable account by using AutoAccounting,
- F. It uses the AutoInvoice clearing account if it price multiplied by quantity does not equal the total amount for a line.

Answer: ACF

NEW QUESTION 26

In order for supplementary data sources to be registered in Oracle Bill Presentment Architecture (BPA), they must be interfaced with which Oracle Application?

- A. Oracle Projects
- B. Oracle Receivables
- C. Oracle Service Contract
- D. Oracle Order Management

Answer: B

NEW QUESTION 31

You receive a request to create a new responsibility for US Payables Manager. The request states that the new responsibility should have access to all menu (terns except Invoice Payments.

Identify two options that you would use to restrict the Invoice Payments option on the new US Payables Manager responsibility. (Choose two.)

- A. Remove the request group from the new US Payables Manager responsibility.
- B. Create a Menu Exclusion for Invoice Payments on the US Payables Manager responsibility.
- C. Create an Item Exclusion for Invoice Payments on the US Payables Manager responsibility.
- D. Create a Security Attribute for Invoice Payments on the US Payables Manager responsibility.
- E. Create a new menu excluding the Invoice Payments option and attach the new menu to the responsibility.

Answer: BE

NEW QUESTION 36

You have logged In to the Oracle E-Business Suite Release 12 Instance and accessed your worklist. You see four FYI notifications in your default Worklist view. You opened the first notification and clicked the "OK" button after reviewing the content.

Identify three things that can happen after you return to your worklist. (Choose three.)

- A. You see four notifications in your worklist.
- B. You see three notifications in your worklist.
- C. Status of the first notification has been updated to "Delete."
- D. Status of the first notification has been updated to "Closed."
- E. You can view the first notification by choosing the "All Notifications" view from your worklist.
- F. You can view the first notification by choosing the "FYI Notifications" view from your worklist.

Answer: BDE

NEW QUESTION 37

Identify three features of a Balancing Entity. (Choose three.)

- A. Balance sheets are prepared for a Balancing Entity.
- B. A Legal Entity may comprise one or more than one balancing segments.
- C. Multiple Balancing Entities within the same Operating Unit structure is not supported.
- D. A Balancing Entity is represented as a balancing segment value in the accounting flexfield structure.
- E. Oracle E-Business Suite Release 12 automatically secures balancing segment values within your chart of accounts with specific Legal Entities or Operating Units.

Answer: ABD

NEW QUESTION 42

A global company uses Oracle E-Business Suite Release 12 for its operations in the U.S. and Canada. The company is now adding Mexico to the Oracle E-Business Suite Release 12 Applications. As a system administrator, you need to set the MO: Operating Unit profile option for Mexico. Customer is not using Multi-Org Access Control.

You set the MO: Operating Unit profile option at the _____level.

- A. Site
- B. User
- C. Application
- D. Responsibility

Answer: D

NEW QUESTION 43

Identify three features of a Value Set. (Choose three.)

- A. Value Sets are mandatory.
- B. Value Sets must contain a list of values.
- C. Value Sets control the values for many report parameters.
- D. The same Value Set can be shared between different Flexfields.
- E. A Value Set is a definition of the values approved for entry by a particular Flexfield Segment

Answer: CDE

NEW QUESTION 48

Which two options would you use to restrict the functionality provided by a responsibility? (Choose two.)

- A. creating an appropriate role
- B. creating an appropriate group
- C. constructing a new menu hierarchy
- D. defining rules to exclude specific functions

Answer: CD

NEW QUESTION 49

Identify three standard views that you can access from the Notification Worklist of Oracle Workflow Self-Service Web pages in Oracle E-Business Suite Release 12. (Choose three.)

- A. Open Notifications
- B. To Do Notifications
- C. Closed Notifications
- D. Notifications from Me
- E. Rejected Notifications

Answer: ABD

NEW QUESTION 52

During the cutover phase of a project to Implement Oracle E-Business Suite Release 12, you are responsible for converting historical account balances into Oracle General Ledger from a legacy system. There is no Account Code Combination setup in the Production Instance. Identify the setup in the Accounting Key Flexfield structure that is required to perform this conversion.

- A. Define Value Sets and assign them to Segments.
- B. Define Segments in the Accounting Flexfield structure.
- C. Qualify one of the Segments as the Balancing Segment.
- D. The Key Flexfield Segments have to be enabled and displayed.
- E. Select the "Allow Dynamic Inserts" check box in the Accounting Key Flexfield structure.

Answer: E

NEW QUESTION 55

Identify two types of regions In Daily Business Intelligence, (Choose two.)

- A. menu
- B. table
- C. folder
- D. report
- E. graph

Answer: BE

NEW QUESTION 60

Company ABC is implementing Oracle User Management (OUM). It has decided to implement the Self Service and Approvals access control layer.

What are the three self-service registration tasks an end user can perform? (Choose three.)

- A. Reset passwords.
- B. Obtain new user accounts.
- C. Request deactivation of responsibility
- D. Request reports to be added to request set.
- E. Request additional access to the applications

Answer: ABE

NEW QUESTION 62

Which three major application product families are Included in the Oracle E-Business Suite Release 12 footprint? (Choose three.)

- A. Oracle Workflow
- B. Oracle Financials
- C. Oracle Applications Framework
- D. Oracle Applications Object Library

- E. Oracle Project Management Product Suite
- F. Oracle Human Resources Management System Suite

Answer: BEF

NEW QUESTION 64

Which four products In Oracle E-Business Suite Release 12 require a Multi-Org setup? (Choose four)

- A. Payables
- B. Purchasing
- C. Receivables
- D. General Ledger
- E. Order Management

Answer: ABCE

NEW QUESTION 67

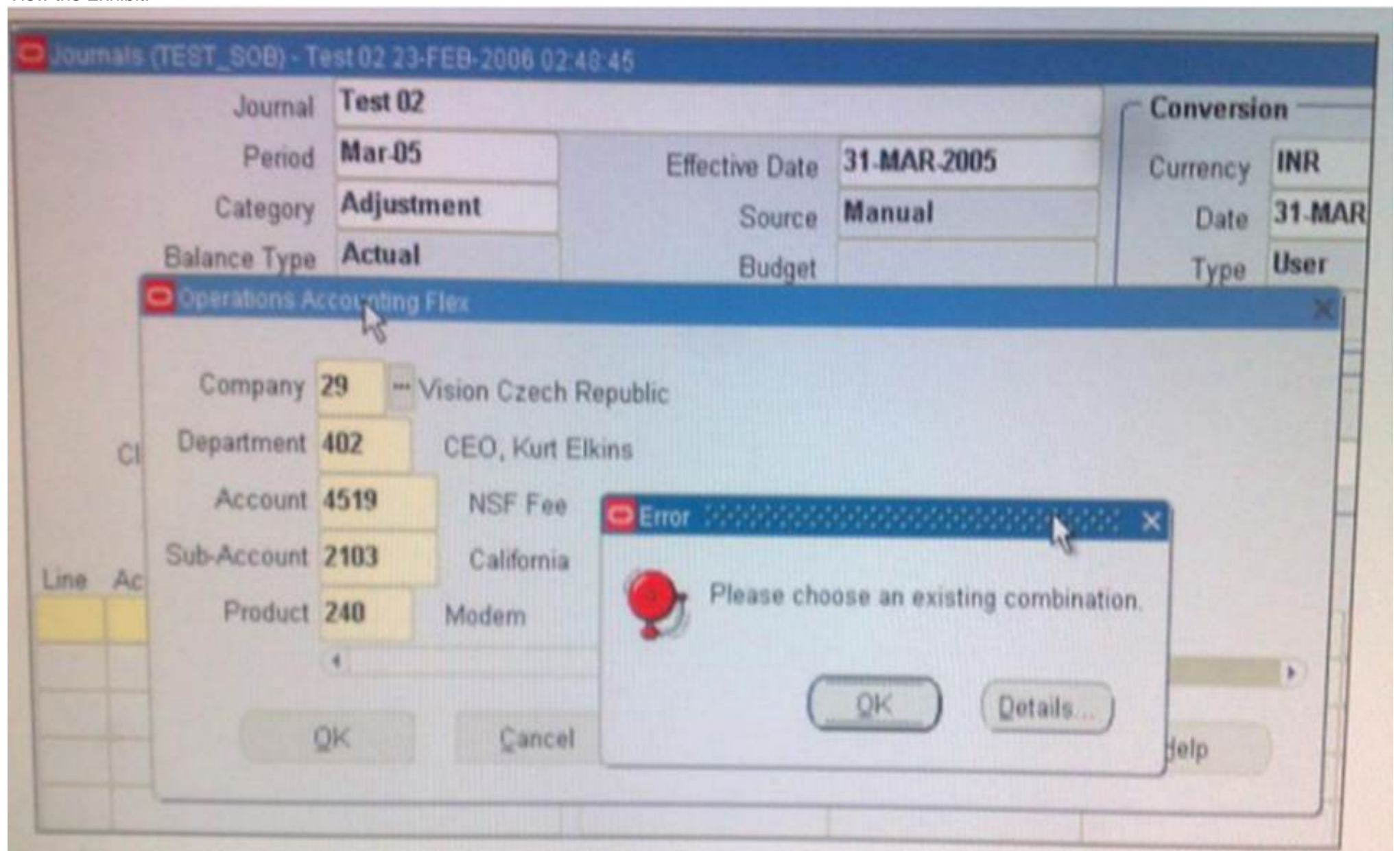
A Global Single Instance (GSI) provides global enterprise with a single, complete data model, Identify three features in Oracle E-Business Suite Release 12 that support a GSI, (Choose three)

- A. maintenance of third-party applications
- B. automation of standardized documents and audit processor
- C. decentralization of operations by regions, division, or process
- D. consolidation of data center and lowering administrator overhead
- E. capture of statutory and customary local requirement in the same database

Answer: BDE

NEW QUESTION 72

View the Exhibit.



While entering a journal in the Journals form, you enter a code combination of 29.402.4519.2103.240 in the five-segment Accounting Flexfield. However, you are unable to proceed after entering this account combination.

What could be the problem in the structure definition of the Accounting Flexfield?

- A. The "Freeze Rollup Groups" check box is selected.
- B. The "Allow Dynamic Inserts" check box is deselected.
- C. The "Freeze Flexfield Definition" check box is selected.
- D. The "Cross-Validate Segments" check box is selected.

Answer: B

NEW QUESTION 73

.....

Thank You for Trying Our Product

We offer two products:

1st - We have Practice Tests Software with Actual Exam Questions

2nd - Questions and Answers in PDF Format

1Z0-518 Practice Exam Features:

- * 1Z0-518 Questions and Answers Updated Frequently
- * 1Z0-518 Practice Questions Verified by Expert Senior Certified Staff
- * 1Z0-518 Most Realistic Questions that Guarantee you a Pass on Your First Try
- * 1Z0-518 Practice Test Questions in Multiple Choice Formats and Updates for 1 Year

100% Actual & Verified — Instant Download, Please Click
[Order The 1Z0-518 Practice Test Here](#)