

## 2V0-621D Dumps

# VMware Certified Professional 6 – Data Center Virtualization Delta Beta

<https://www.certleader.com/2V0-621D-dumps.html>



### NEW QUESTION 1

An object has inherited permissions from two parent objects. What is true about the permissions on the object?

- A. The common permissions between the two are applied and the rest are discarded.
- B. The permissions are combined from both parent objects.
- C. No permissions are applied from the parent objects.
- D. The permission is randomly selected from either of the two parent objects.

**Answer:** B

**Explanation:** Most inventory objects inherit permissions from a single parent object in the hierarchy. For example, a datastore inherits permissions from either its parent datastore folder or parent datacenter. Virtual machines inherit permissions from both the parent virtual machine folder and the parent host, cluster, or resource pool simultaneously. To restrict a user's privileges on a virtual machine, you must set permissions on both the parent folder and the parent host, cluster, or resource pool for that virtual machine.

Reference: [http://pubs.vmware.com/vsphere-4-esx-vcenter/index.jsp?topic=/com.vmware.vsphere.dccadmin.doc\\_41/vsp\\_dc\\_admin\\_guide/managing\\_users\\_groups\\_roles\\_and\\_permissions/c\\_hierarchical\\_inheritance\\_of\\_permissions.html](http://pubs.vmware.com/vsphere-4-esx-vcenter/index.jsp?topic=/com.vmware.vsphere.dccadmin.doc_41/vsp_dc_admin_guide/managing_users_groups_roles_and_permissions/c_hierarchical_inheritance_of_permissions.html)

### NEW QUESTION 2

An administrator wants to configure an ESXi 6.x host to use Active Directory (AD) to manage users and groups. The AD domain group ESX Admins is planned for administrative access to the host.

Which two conditions should be considered when planning this configuration? (Choose two.)

- A. If administrative access for ESX Admins is not required, this setting can be altered.
- B. The users in ESX Admins are not restricted by Lockdown Mode.
- C. An ESXi host provisioned with Auto Deploy cannot store AD credentials.
- D. The users in ESX Admins are granted administrative privileges in vCenter Server.

**Answer:** AC

**Explanation:** The setting can be altered if administrative access for ESX admins is not required. The second rule is that the ESX admins users should not be restricted by Lockdown mode.

### NEW QUESTION 3

Refer to the Exhibit.

Identity source type:

- ☐ Active Directory (Integrated Windows Authentication)
- ☒ Active Directory as a LDAP Server
- ☐ Open LDAP
- ☐ Local OS

Identity source settings

Name:

Base DN for users:

Domain name:

Domain alias:



Base DN for groups:

Primary server URL:

Secondary server URL:

Username:

Password:

An administrator is adding an Active Directory over LDAP Identity Source for vCenter Single Sign-On, as indicated in the Exhibit. What is the correct value to configure for the Domain alias?

- A. The domain's NetBIOS name.
- B. The fully qualified domain name.
- C. vsphere.local

D. A user defined label.

**Answer:** A

**Explanation:** The domain alias is usually NetBIOS name, for example, acme.lab.

Reference: <https://www.virtten.net/2015/02/how-to-add-ad-authentication-in-vcenter-6-0-platform-service-controller/>

#### NEW QUESTION 4

An administrator needs two vCenter Servers to be visible within a single vSphere Web Client session.

Which two vCenter Server and Platform Services Controller (PSC) configurations would accomplish this? (Choose two.)

- A. Install a single PSC with two vCenter Servers registered to it.
- B. Install two PSCs in the same Single Sign-On domain with one vCenter Server registered to each PSC.
- C. Install a single PSC with two vCenter Servers registered to it and configure Linked Mode.
- D. Install two PSCs in the same Single Sign-On domain with one vCenter Server registered to each PSC and configure Linked Mode.

**Answer:** AB

**Explanation:** To have two vcenter servers visible within a single vSphere web client session, you have to install a single PSC with both vCenter servers registered. You also need to install two PSCs in the same SSO domain with one vCenter Server registered to each PSC.

#### NEW QUESTION 5

In which two vsphere.local groups should an administrator avoid adding members?

(Choose two.)

- A. SolutionUsers
- B. Administrators
- C. DCAdmins
- D. ExternalPDUsers

**Answer:** AB

**Explanation:** The vsphere.local domain includes several predefined groups. Assign users to one of those groups to be able to perform the corresponding actions. For all objects in the vCenter Server hierarchy, permissions are assigned by pairing a user and a role with the object. For example, you can select a resource pool and give a group of users read privileges to that resource pool by giving them the corresponding role.

For some services that are not managed by vCenter Server directly, privileges are determined by membership to one of the vCenter Single Sign-On groups. For example, a user who is a member of the Administrator group can manage vCenter Single Sign-On. A user who is a member of the CAAdmins group can manage the VMware Certificate Authority, and a user who is in the LicenseService.Administrators group can manage licenses.

Reference:

<https://pubs.vmware.com/vsphere-60/index.jsp?topic=%2Fcom.vmware.vsphere.security.doc%2FGUID-87DA2F34-DCC9-4DAB-8900-1BA35837D07E.html>

#### NEW QUESTION 6

An administrator decides to change the root password for an ESXi 6.x host to comply with the company's security policies.

What are two ways that this can be accomplished? (Choose two.)

- A. Use the Direct Console User Interface to change the password.
- B. Use the passwd command in the ESXi Shell.
- C. Use the password command in the ESXi Shell.
- D. Use the vSphere client to update local users.

**Answer:** AB

**Explanation:** To prevent unauthorized access to the vCenter Server Appliance Direct Console User Interface, you can change the password of the root user. The default root password for the vCenter Server Appliance is the password you enter during deployment of the virtual appliance.

Reference: <http://pubs.vmware.com/vsphere-60/index.jsp?topic=%2Fcom.vmware.vsphere.vcsa.doc%2FGUID-48BAF973-4FD3-4FF3-B1B6-5F7286C9B59A.html>

#### NEW QUESTION 7

Strict Lockdown Mode has been enabled on an ESXi host.

Which action should an administrator perform to allow ESXi Shell or SSH access for users with administrator privileges?

- A. Grant the users the administrator role and enable the service.
- B. Add the users to Exception Users and enable the service.
- C. No action can be taken, Strict Lockdown Mode prevents direct access.
- D. Add the users to vsphere.local and enable the service.

**Answer:** B

**Explanation:** Reference: <https://pubs.vmware.com/vsphere-60/index.jsp?topic=%2Fcom.vmware.vsphere.security.doc%2FGUID-F8F105F7-CF93-46DF-9319-F8991839D265.html>

#### NEW QUESTION 8

An administrator wants to provide users restricted access. The users should only be able to

perform the following tasks:

? Create and consolidate virtual machine snapshots

? Add/Remove virtual disks

? Snapshot Management

Which default role in vCenter Server would meet the administrator's requirements for the users?

A. Virtual machine user

B. Virtual machine power user

C. Virtual Datacenter administrator

D. VMware Consolidated Backup user

**Answer: B**

**Explanation:** Virtual Machine Power User is a sample role that grants a user access rights only to virtual machines; can alter the virtual hardware or create snapshots of the VM.

Reference: <http://blog.pluralsight.com/vmware-access-control-101-roles-and-permissions>

#### NEW QUESTION 9

An administrator is able to manage an ESXi 6.x host connected to vCenter Server using the vSphere Web Client but is unable to connect to the host directly. Which action should the administrator take to correct this behavior?

A. Restart management agents on the ESXi host.

B. Disable Lockdown Mode on the ESXi host through vCenter Server.

C. Disable the ESXi firewall with the command `esxcli network firewall unload`.

D. Reboot the ESXi host.

**Answer: B**

**Explanation:** Disable lockdown mode through the DCUI and then enable it through the vCenter Server instead. The vCenter Server does not keep track of lockdown mode state changes that initiated outside of the vCenter Server itself.

Reference: [http://kb.vmware.com/selfservice/microsites/search.do?language=en\\_US&cmd=displayKC&externalId=2040768](http://kb.vmware.com/selfservice/microsites/search.do?language=en_US&cmd=displayKC&externalId=2040768)

#### NEW QUESTION 10

Which three options are available for ESXi Certificate Replacement? (Choose three.)

A. VMware Certificate Authority mode

B. Custom Certificate Authority mode

C. Thumbprint mode

D. Hybrid Deployment

E. VMware Certificate Endpoint Authority Mode

**Answer: ABC**

**Explanation:** You can perform different types of certificate replacement depending on company policy and requirements for the system that you are configuring. You can perform each replacement with the vSphere Certificate Manager utility or manually by using the CLIs included with your installation.

VMCA is included in each Platform Services Controller and in each embedded deployment. VMCA provisions each node, each vCenter Server solution user, and each ESXi host with a certificate that is signed by VMCA as the certificate authority. vCenter Server solution users are groups of vCenter Server services. See vSphere Security for a list of solution users.

You can replace the default certificates. For vCenter Server components, you can use a set of command-line tools included in your installation. You have several options.

Reference:

<http://pubs.vmware.com/vsphere-60/index.jsp?topic=%2Fcom.vmware.vsphere.install.doc%2FGUID-4469A6D3-048A-471C-9CB4-518A15EA2AC0.html>

#### NEW QUESTION 10

Which group in the vsphere.local domain will have administrator privileges for the VMware Certificate Authority (VMCA)?

A. SolutionUsers

B. CAAdmins

C. DCAAdmins

D. SystemConfiguration.Administrators

**Answer: B**

**Explanation:** Members of the CAAdmins group have administrator privileges for VMCA. Adding members to these groups is not usually recommended.

Reference:

<https://pubs.vmware.com/vsphere-60/index.jsp?topic=%2Fcom.vmware.vsphere.security.doc%2FGUID-87DA2F34-DCC9-4DAB-8900-1BA35837D07E.html>

#### NEW QUESTION 12

Lockdown Mode has been enabled on an ESXi 6.x host and users are restricted from logging into the Direct Console User Interface (DCUI).

Which two statements are true given this configuration? (Choose two.)

A. A user granted administrative privileges in the Exception User list can login.

B. A user defined in the DCUI.Access without administrative privileges can login.

C. A user defined in the ESXi Admins domain group can login.

D. A user set to the vCenter Administrator role can login.

**Answer:** AB

**Explanation:** Reference: <https://pubs.vmware.com/vsphere-60/index.jsp?topic=%2Fcom.vmware.vsphere.security.doc%2FGUID-F8F105F7-CF93-46DF-9319-F8991839D265.html>

#### NEW QUESTION 14

When attempting to log in with the vSphere Web Client, users have reported the error: Incorrect Username/Password  
The administrator has configured the Platform Services Controller Identity Source as:

? Type. Active Directory as an LDAP Server

? Domain: vmware.com

? Alias: VMWARE

? Default Domain: Yes

Which two statements would explain why users cannot login to the vSphere Web Client? (Choose two.)

- A. Users are typing the password incorrectly.
- B. Users are in a forest that has 1-way trust.
- C. Users are in a forest that has 2-way trust.
- D. Users are logging into vCenter Server with incorrect permissions.

**Answer:** AB

**Explanation:** The possible explanation for this error might be that the users are typing password incorrectly or they are in a forest with has only 1-way trust. You need 2-way trust to get the credentials accepted.

#### NEW QUESTION 17

Which two methods are recommended for managing the VMware Directory Service? (Choose two.)

- A. Utilize the vmdir command.
- B. Manage through the vSphere Web Client.
- C. Manage using the VMware Directory Service.
- D. Utilize the dc rep command.

**Answer:** AB

**Explanation:** To manage VMware directory service, you can use vmdir command and vsphere web client. VMware directory service is always managed using vmdir command which is specifically used for directory services.

#### NEW QUESTION 19

An administrator wishes to give a user the ability to manage snapshots for virtual machines.  
Which privilege does the administrator need to assign to the user?

- A. Datastore.Allocate Space
- B. Virtual machine.Configuration.create snapshot
- C. Virtual machine.Configuration.manage snapshot
- D. Datastore.Browse Datastore

**Answer:** A

**Explanation:** Datastore.Allocate space allows allocating space on a datastore for a virtual machine, snapshot, clone, or virtual disk.  
Reference: <https://pubs.vmware.com/vsphere-51/index.jsp?topic=%2Fcom.vmware.vsphere.security.doc%2FGUID-B2426ACC-D73F-4732-8BBC-DE9B1B2263D9.html>

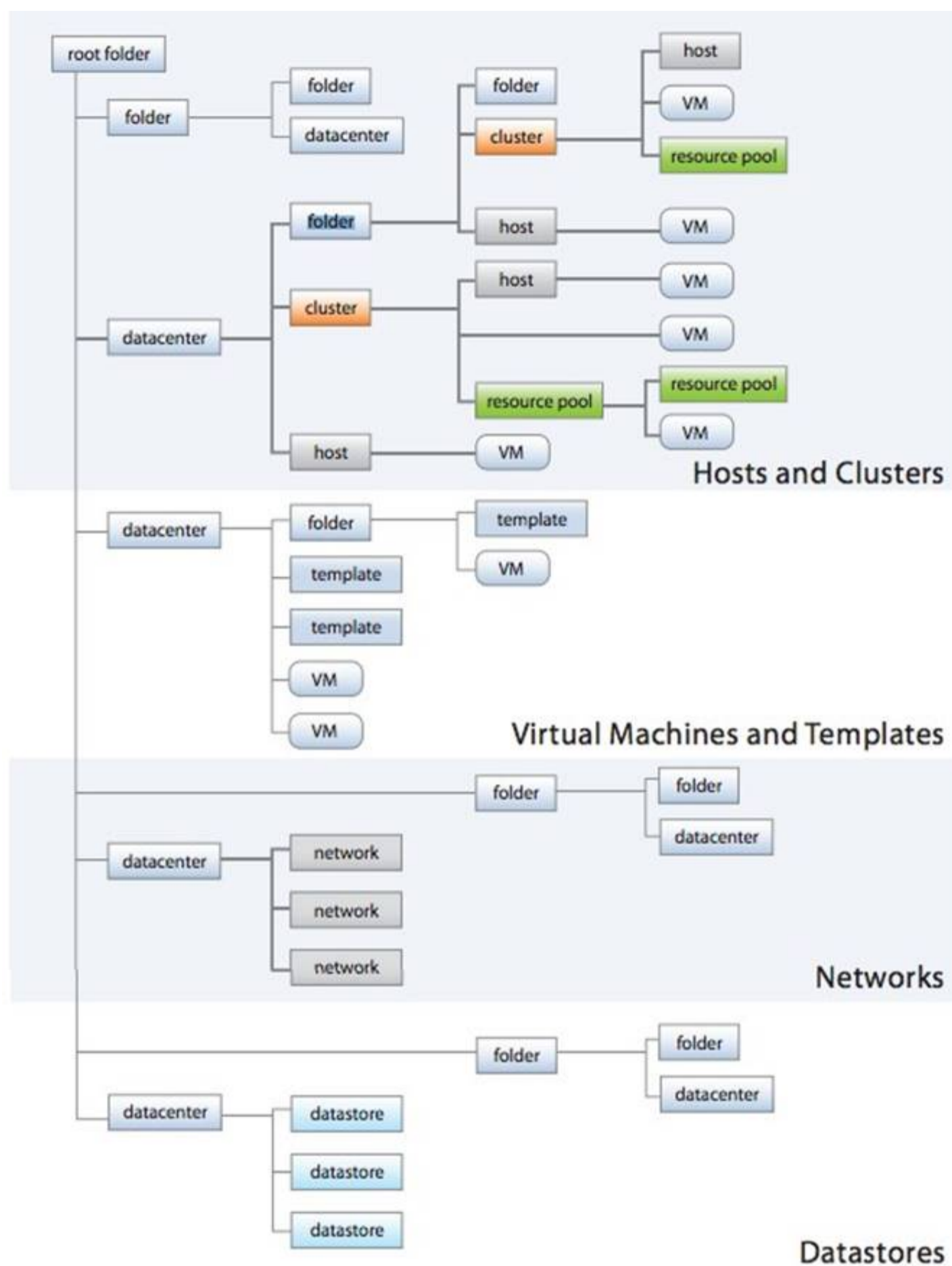
#### NEW QUESTION 24

What is the highest object level from which a virtual machine can inherit privileges?

- A. Host Folder
- B. Data Center
- C. Data Center Folder
- D. VM Folder

**Answer:** C

**Explanation:**



Rahail HDD:Users:iMac\Desktop:Screen Shot 2015-06-09 at 3.20.28 PM.png  
Reference: [http://www.vmware.com/pdf/vi3\\_vc\\_roles.pdf](http://www.vmware.com/pdf/vi3_vc_roles.pdf)

#### NEW QUESTION 28

Which Advanced Setting should be created for the vCenter Server to change the expiration policy of the vpxuser password?

- A. VimPasswordExpirationInDays
- B. VimExpirationPasswordDays
- C. VimPassExpirationInDays
- D. VimPasswordRefreshDays

**Answer:** A

**Explanation:** vCenter Server creates the vpxuser account on each ESX/ESXi host that it manages. The password for each vpxuser account is auto-generated when an ESX/ESXi host is added. The password is updated by default every 30 days.

To modify default password settings:

? Connect vSphere Client to vCenter Server.

? Click Administration > vCenter Server Settings > Advanced Settings.

? Scroll to the parameter VirtualCenter.VimPasswordExpirationInDays and change the value from the default.

Reference: [http://kb.vmware.com/selfservice/microsites/search.do?language=en\\_US&cmd=displayKC&externalId=1016736](http://kb.vmware.com/selfservice/microsites/search.do?language=en_US&cmd=displayKC&externalId=1016736)

#### NEW QUESTION 32

Which password meets ESXi 6.x host password requirements?

- A. 8kMVnn2x!
- B. zNgtnJBA2
- C. Nvgt34kn44
- D. !b74wr

**Answer:** A

**Explanation:** A valid password requires a mix of upper and lower case letters, digits, and other characters. You can use a 7-character long password with characters from at least three of these four classes, or a 6-character long password containing characters from all the classes. A password that begins with an upper case letter and ends with a numerical digit does not count towards the number of character classes used. It is recommended that the password does not contain the username.

A passphrase requires at least 3 words, can be 8 to 40 characters long, and must contain enough different characters.

Reference: [http://kb.vmware.com/selfservice/microsites/search.do?language=en\\_US&cmd=displayKC&externalId=1012033](http://kb.vmware.com/selfservice/microsites/search.do?language=en_US&cmd=displayKC&externalId=1012033)

#### NEW QUESTION 37

Which Platform Service Controller Password Policy determines the number of days a password can exist before the user must change it?

- A. Maximum Lifetime
- B. Password Age
- C. Maximum Days
- D. Password Lifetime

**Answer:** A

**Explanation:** You can configure the following parameters for password policy:

? Description – Password policy description. Required.

? Maximum lifetime – Maximum number of days that a password can exist before it has to be changed.

? Restrict re-use – Number of the user's previous passwords that cannot be set again.

? Maximum length – Maximum number of characters that are allowed in the password.

? Minimum length – Minimum number of characters required in the password.

? Character requirements – Minimum number of different character types required in the password.

? Identical adjacent characters – Maximum number of identical adjacent characters allowed in the password.

Reference: <http://www.vladan.fr/vcp6-dcv-objective-1-3-enable-sso-and-active-directory-integration/>

#### NEW QUESTION 40

An administrator needs to create an Integrated Windows Authentication (IWA) Identity Source on a newly deployed vCenter Server Appliance (VCSA).

Which two actions will accomplish this? (Choose two.)

- A. Use a Service Principal Name (SPN) to configure the Identity Source.
- B. Use a Domain administrator to configure the Identity Source.
- C. Join the VCSA to Active Directory and configure the Identity Source with a Machine Account.
- D. Create a computer account in Active Directory for the VCSA and configure the Identity Source.

**Answer:** AC

**Explanation:** Using a machine account when configuring an Active Directory identity source for vCenter Server requires that the Windows system be joined to the domain. If the system is not joined to the domain, SSO cannot leverage the machine account to create the identity source and perform its function as the secure token service user.

To resolve this issue in VCVA 5.5, use only the Use SPN option.

Reference:

[http://kb.vmware.com/selfservice/microsites/search.do?language=en\\_US&cmd=displayKC&externalId=2058919](http://kb.vmware.com/selfservice/microsites/search.do?language=en_US&cmd=displayKC&externalId=2058919)

#### NEW QUESTION 45

Which three options are available for replacing vCenter Server Security Certificates? (Choose three.)

- A. Replace with Certificates signed by the VMware Certificate Authority.
- B. Make VMware Certificate Authority an Intermediate Certificate Authority.
- C. Do not use VMware Certificate Authority, provision your own Certificates.
- D. Use SSL Thumbprint mode.
- E. Replace all VMware Certificate Authority issued Certificates with self-signed Certificates.

**Answer:** ABC

**Explanation:** There are three options for replace vCenter server security certificates. You can replace it with certificates signed by VMware certificate authority; you can make the VMCA an intermediate certificate authority. Likewise, you can provision your own certificates.

#### NEW QUESTION 49

An administrator is configuring the clock tolerance for the Single Sign-On token configuration policy and wants to define the time skew tolerance between a client and the domain controller clock.

Which time measurement is used for the value?

- A. Milliseconds
- B. Seconds
- C. Minutes
- D. Hours

**Answer:** A

**Explanation:** The time skew tolerance between a client and the domain controller clock is measured in milliseconds.

#### NEW QUESTION 50

Which three connection types are supported between a remote site and vCloud Air? (Choose three.)

- A. Secure Internet Connectivity
- B. Private Connect
- C. Direct Connect
- D. Internet Connectivity
- E. Secure VPN

**Answer:** ACE

**Explanation:** The connection types supported between a remote site and vcloud Air is secure VPN, direct connect and Secure Internet Connectivity.

#### NEW QUESTION 52

Which two roles can be modified? (Choose two.)

- A. Administrator
- B. Network Administrator
- C. Datastore Consumer
- D. Read-Only

**Answer:** BC

**Explanation:** It is a common knowledge that you cannot modify Administrator role and grant whatever privileges you like. Same is the case with read-only. This role is created solely for ready only purposes. So you are left with two viable options – Network administrator and Datastore consumer both of which can be modified to add or delete privileges according to your specifications.

#### NEW QUESTION 57

An administrator is assigning a user the Content Library administrator role. The user will only be creating the library for a single vCenter Server. What is the lowest level of the permission heirarchy that this role can be granted to the user and still allow them to create a Content Library?

- A. Global
- B. Datacenter Folder
- C. Virtual Center
- D. Datacenter

**Answer:** A

**Explanation:** To let a user manage a content library and its items, an Administrator can assign the Content Library Administrator role to that user as a global permission. The Content Library Administrator role is a sample role in the vSphere Web Client. Users who are Administrators can also manage libraries and their contents. If a user is an Administrator at a vCenter Server level, they have sufficient privileges to manage the libraries that belong to this vCenter Server instance, but cannot see the libraries unless they have a Read-Only role as a global permission. Reference: [http://pubs.vmware.com/vsphere-60/index.jsp?topic=%2Fcom.vmware.vsphere.vm\\_admin.doc%2FGUID-18F4B892-D685-4473-AC25-3195D68DFD90.html](http://pubs.vmware.com/vsphere-60/index.jsp?topic=%2Fcom.vmware.vsphere.vm_admin.doc%2FGUID-18F4B892-D685-4473-AC25-3195D68DFD90.html)

#### NEW QUESTION 61

An administrator has configured three vCenter Servers and vRealize Orchestrator within a Platform Services Controller domain, and needs to grant a user privileges that span all environments. Which statement best describes how the administrator would accomplish this?

- A. Assign a Global Permission to the user.
- B. Assign a vCenter Permission to the user.
- C. Assign vsphere.local membership to the user.
- D. Assign an ESXi Permission to the user.

**Answer:** A

**Explanation:** Global permissions are applied to a global root object that spans solutions, for example, both vCenter Server and vCenter Orchestrator. Use global permissions to give a user or group privileges for all objects in all object hierarchies. Reference: <http://pubs.vmware.com/vsphere-60/index.jsp?topic=%2Fcom.vmware.vsphere.security.doc%2FGUID-C7702E31-1623-4189-89CB-E1136AA27972.html>

#### NEW QUESTION 64

An administrator would like to use a passphrase for their ESXi 6.x hosts which has these characteristics:  
? Minimum of 21 characters  
? Minimum of 2 words  
Which advanced options must be set to allow this passphrase configuration to be used?

- A. retry=3 min=disabled, disabled, 7, 21, 7 passphrase=2
- B. retry=3 min=disabled, disabled, 21, 7, 7 passphrase=2
- C. retry=3 min=disabled, disabled, 2, 21, 7
- D. retry=3 min=disabled, disabled, 21, 21, 2

**Answer:** B

**Explanation:** To force a specific password complexity and disable all others, replace the number with the word with disabled. For example, to force passwords containing characters from all four- character classes:

password requisite /lib/security/\$ISA/pam\_passwdqc.so retry=3 min= disabled,disabled,disabled,disabled,7

Reference: [http://kb.vmware.com/selfservice/microsites/search.do?language=en\\_US&cmd=displayKC&externalId=1012033](http://kb.vmware.com/selfservice/microsites/search.do?language=en_US&cmd=displayKC&externalId=1012033)

#### NEW QUESTION 69

Which command shows the Physical Uplink status for a vmnic?

- A. esxcli network ip get
- B. esxcli network nic list
- C. esxcli network vmnic list
- D. esxcli network ifconfig get

**Answer:** B

**Explanation:** Reference: <http://blogs.vmware.com/vsphere/2013/01/network-troubleshooting-using-esxcli-5-1.html>

#### NEW QUESTION 71

Which secondary Private VLAN (PVLAN) type can communicate and send packets to an Isolated PVLAN?

- A. Community
- B. Isolated
- C. Promiscuous
- D. Primary


**Answer:** C

**Explanation:** A node attached to a port in a promiscuous secondary PVLAN may send and receive packets to any node in any others secondary VLAN associated to the same primary. Routers are typically attached to promiscuous ports.

Reference: <https://communities.vmware.com/thread/483486>

#### NEW QUESTION 76

Refer to the Exhibit.



This host currently has no management network redundancy

An administrator is changing the settings on a vSphere Distributed Switch (vDS). During this process, the ESXi Management IP address is set to an address which can no longer communicate with the vCenter Server.

What is the most likely outcome of this action?

- A. The host will disconnect from the vCenter Server and remain disconnected.
- B. The host will automatically detect the communication issue and revert the change.
- C. The host will stay connected with the change, but show an alert.
- D. The host will disconnect and migrate the vDS portgroup to a standard switch.

**Answer:** B

**Explanation:** ESXi is a flexible environment that automatically detects communication issues and revert the changes made in mistake.

#### NEW QUESTION 79

An administrator creates a Private VLAN with a Primary VLAN ID of 2. The administrator then creates three Private VLANs as follows:

- ? Marketing
- ? PVLAN ID. 4
- ? PVLAN Type. Isolated
- ? Accounting
- ? PVLAN ID. 5
- ? PVLAN Type. Community
- ? Secretary
- ? PVLAN ID. 17
- ? PVLAN Type. Isolated

Users in the Accounting PVLAN are reporting problems communicating with servers in the Marketing PVLAN.

Which two actions could the administrator take to resolve this problem? (Choose two.)

- A. Change the PVLAN type for the Accounting network to Promiscuous.
- B. Change the PVLAN ID for the Accounting network to 2.
- C. Change the PVLAN type for Marketing network to Promiscuous.
- D. Change the PVLAN ID for Accounting network to 4.

**Answer:** AB

**Explanation:** Change the PVLAN type for the accounting network to Promiscuous and the PVLAN ID to 2. This way, the servers in Marketing PVLAN will communicate effectively.

### NEW QUESTION 83

An administrator runs the command `esxcli storage core device list` and sees the following output:

`mpx.vmhba1:C0:T0:L0 Display Name: RAID 5 (mpx.vmhba1:C0:T0:L0) Has Settable Display Name: false Size: 40960 Device Type: Direct-Access Multipath Plugin: NMP Devfs Path: /vmfs/devices/disks/mpx.vmhba1:C0:T0:L0 Status: off Is Local: true`

What can be determined by this output?

- A. The device is being used for vFlash Read Cache.
- B. The device is in a Permanent Device Loss (PDL) state.
- C. The device is a local Solid State Device (SSD).
- D. The device is in an All Paths Down (APD) state.

**Answer:** B

**Explanation:** Reference: <http://vmwaremine.com/2014/07/07/manage-psa-claimrules-satp-rules-esxcli/#sthash.i6Esax8x.dpbs>

### NEW QUESTION 86

Which two groups of settings should be reviewed when attempting to increase the security of virtual machines (VMs)? (Choose two.)

- A. Disable hardware devices
- B. Disable unexposed features
- C. Disable Vmtools devices
- D. Disable VM Template features

**Answer:** AB

**Explanation:** Make sure you review hardware devices and disable the unnecessary ones. Also disable unexposed features before increasing virtual machines security.

### NEW QUESTION 90

Which two statements are true regarding iSCSI adapters? (Choose two.)

- A. Software iSCSI adapters require vmkernel networking.
- B. Independent Hardware iSCSI adapters offload processing from the ESXi host.
- C. Dependent Hardware iSCSI adapters do not require vmkernel networking.
- D. Independent Hardware iSCSI adapters require vmkernel networking.

**Answer:** AB

**Explanation:** An independent hardware iSCSI adapter is a specialized third-party adapter capable of accessing iSCSI storage over TCP/IP. This iSCSI adapter handles all iSCSI and network processing and management for your ESXi system.

Software and dependent hardware iSCSI adapters depend on VMkernel networking. If you use the software or dependent hardware iSCSI adapters, you must configure connections for the traffic between the iSCSI component and the physical network adapters.

Reference: <http://pubs.vmware.com/vsphere-51/index.jsp#com.vmware.vsphere.storage.doc/GUID-9BC0BA74-EAE4-4816-BD49-E5214920AB4B.html>

### NEW QUESTION 92

Which two advanced features should be disabled for virtual machines that are only hosted on a vSphere system? (Choose two.)

- A. `isolation.tools.unix.push.update.disable`
- B. `isolation.tools.guest.launchmenu.change`
- C. `isolation.tools.bios.disable`
- D. `isolation.tools.hgfsServerSet.enable`

**Answer:** AB

**Explanation:** Because VMware virtual machines run in many VMware products in addition to vSphere, some virtual machine parameters do not apply in a vSphere environment. Although these features do not appear in vSphere user interfaces, disabling them reduces the number of vectors through which a guest operating system could access a host. Use the following

.vmx setting to disable these features:

`isolation.tools.unix.push.update.disable = "TRUE"` `isolation.tools.guest.launchmenu.change = "TRUE"` `isolation.tools.guest.tools.on.disable = "TRUE"`

`isolation.tools.hgfsServerSet.enable = "TRUE"` `isolation.tools.memSampleStats.disable = "TRUE"` `isolation.tools.getCrashd.disable = "TRUE"`

Reference:

<https://pubs.vmware.com/vsphere-51/index.jsp?topic=%2Fcom.vmware.vmtools.install.doc%2FGUID-685722FA-9009-439C-9142-18A9E7C592EA.html>

#### NEW QUESTION 95

Which two solutions require Physical Mode Raw Device Mapping (RDM)? (Choose two.)

- A. Direct access to the storage array device
- B. Virtual Machine Snapshots
- C. Hardware Acceleration
- D. Guest Clustering across ESXi hosts

**Answer:** AD

**Explanation:** Normally, Direct access to storage array device and guest clustering across ESXi hosts required the use of Physical Mode raw device mapping.

#### NEW QUESTION 97

Refer to the Exhibit.

Device Details	
Properties	Paths
Owner	NMP
Partition Details	
Partition Format	GPT
▶ Primary Partitions	1
▶ Logical Partitions	0
Multipathing Policies	
▶ Path Selection Policy	Fixed (VMware)
Storage Array Type Policy	VMW_SATP_EQL

An administrator wishes to provide Load Balanced I/O for the device shown in the Exhibit. To meet this requirement, which setting should be changed?

- A. Storage Array Type Policy = VMW\_NMP\_RR
- B. Path Selection Policy = Round Robin (VMware)
- C. Storage Array Type Policy = VMW\_SATP\_RR
- D. Path Selection Policy = MRU (VMware)

**Answer:** B

**Explanation:** In round robin (VMware) the host uses an automatic path selection algorithm rotating through all available paths. This implements load balancing across all the available physical paths.

Load balancing is the process of spreading server I/O requests across all available host paths. The goal is to optimize performance in terms of throughput (I/O per second, megabytes per second, or response times).

Reference: [https://pubs.vmware.com/vsphere-4-esx-vcenter/index.jsp?topic=/com.vmware.vsphere.config\\_fc.doc\\_40/esx\\_san\\_config/managing\\_san\\_systems/c\\_setting\\_a\\_path\\_selection\\_policy.html](https://pubs.vmware.com/vsphere-4-esx-vcenter/index.jsp?topic=/com.vmware.vsphere.config_fc.doc_40/esx_san_config/managing_san_systems/c_setting_a_path_selection_policy.html)

#### NEW QUESTION 102

Which statement is true for the Path Selection Plug-In VMW\_PSP\_MRU?

- A. VMW\_PSP\_MRU is default for a majority of active-active and active-passive arrays.
- B. VMW\_PSP\_MRU will remain on the selected path even if the state were to change.
- C. VMW\_PSP\_MRU is recommended for Virtual SAN.
- D. VMW\_PSP\_MRU will have no preferred path setting for the Plug-In.

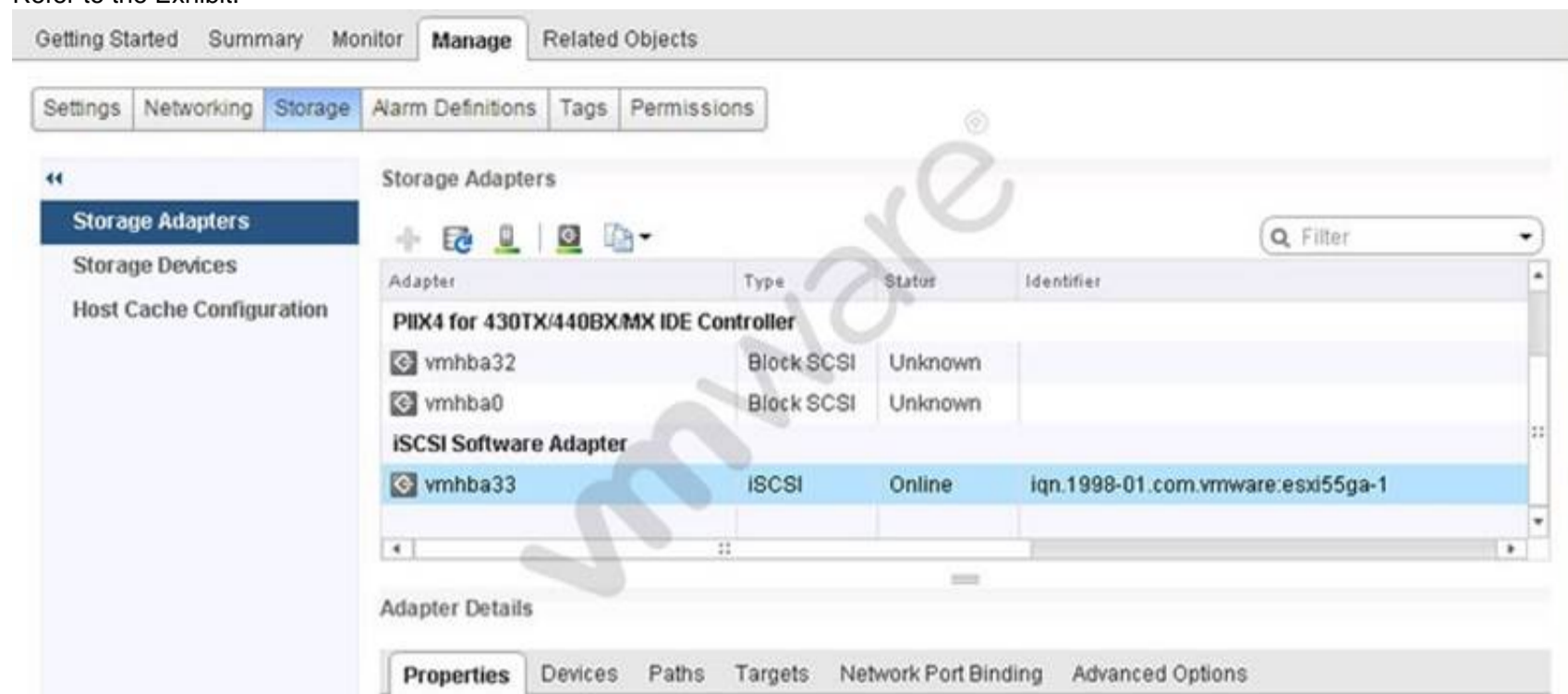
**Answer:** D

**Explanation:** The host selects the path that it used most recently. When the path becomes unavailable, the host selects an alternative path. The host does not revert back to the original path when that path becomes available again. There is no preferred path setting with the MRU policy. MRU is the default policy for active-passive storage devices.

Reference: [http://pubs.vmware.com/vsphere-60/index.jsp?topic=%2Fcom.vmware.vcli.examples.doc%2Fcli\\_manage\\_storage.6.7.html](http://pubs.vmware.com/vsphere-60/index.jsp?topic=%2Fcom.vmware.vcli.examples.doc%2Fcli_manage_storage.6.7.html)

### NEW QUESTION 103

Refer to the Exhibit.



An administrator would like to add Challenge Handshake Authentication Protocol (CHAP) to an iSCSI adapter. The administrator accesses the Storage Adapters menu as shown in the Exhibit.

In which tab can the task be accomplished?

- A. Properties
- B. Advanced Options
- C. Targets
- D. Devices

**Answer:** A

**Explanation:** Reference: <http://www.vmwarebits.com/content/install-and-configure-openfiler-esxi-shared-storage-nfs-and-iscsi>

### NEW QUESTION 108

Which two statements are true regarding Virtual SAN Fault Domains? (Choose two.)

- A. They enable Virtual SAN to tolerate the failure of an entire physical rack.
- B. Virtual SAN ensures that no two replicas are provisioned on the same domain.
- C. Virtual SAN ensures that all replicas are provisioned on the same domain.
- D. They require VMware High Availability (HA) to ensure component distribution across domains.

**Answer:** AB

**Explanation:** A fault domain consists of one or more Virtual SAN hosts grouped together according to their physical location in the data center. When configured, fault domains enable Virtual SAN to tolerate failures of entire physical rack as well as failures of a single host, capacity device, network link or a network switch dedicated to fault domains. Fault domains cannot be configured for stretched or metro clusters.

Reference: <http://pubs.vmware.com/vsphere-60/index.jsp?topic=%2Fcom.vmware.vsphere.virtualsan.doc%2FGUID-8491C4B0-6F94-4023-8C7A-FD7B40D0368D.html>

### NEW QUESTION 113

What is the command to list multipathing modules on an ESXi 6.x host?

- A. esxcli storage core list plugin --plugin-class=MP
- B. esxcli storage core list plugin --class-plugin=MP
- C. esxcli storage core plugin list --plugin-class=MP
- D. esxcli storage core plugin list --class-plugin=MP

**Answer:** C

**Explanation:** Reference: <http://darrylcauldwell.com/advanced-vsphere-5-x-storage-masking- multipathing-filtering/>

### NEW QUESTION 115

An administrator needs to recover disk space on a previously-used thin provisioned virtual disk. The volumes where the administrator needs to recover the disk blocks are on VAAI- compliant storage arrays. Which two actions should the administrator take accomplish this task? (Choose two.)

- A. Perform a Storage vMotion to another volume in order to force free space recovery to occur
- B. This recreates the volume in a new location and recovers all unused space.
- C. Use VMware Converter to migrate the virtual machine to a new datastore
- D. This will recreate the volumes and recover all unused space.

- E. Issue the vmkfstools -vmfs unmap command within the VMFS volume directory on the ESXi host console.
- F. Execute the esxcli storage vmfs unmap command.

**Answer:** BD

**Explanation:** Reference: <http://www.boche.net/blog/index.php/2013/09/13/vsphere-5-5-unmap-deep-dive/>

#### NEW QUESTION 118

Which two tasks does the Pluggable Storage Architecture (PSA) perform? (Choose two.)

- A. Handles I/O queueing to the logical devices.
- B. Handles physical path discovery, but is not involved in the removal.
- C. Handles physical path discovery and removal.
- D. Handles I/O queueing to FC storage HBAs.

**Answer:** AC

**Explanation:** When coordinating the VMware NMP and any installed third-party MPPs, the PSA performs the following tasks:

- ? Loads and unloads multipathing plug-ins.
- ? Hides virtual machine specifics from a particular plug-in.
- ? Routes I/O requests for a specific logical device to the MPP managing that device.
- ? Handles I/O queueing to the logical devices.
- ? Implements logical device bandwidth sharing between virtual machines.
- ? Handles I/O queueing to the physical storage HBAs.
- ? Handles physical path discovery and removal.
- ? Provides logical device and physical path I/O statistics.

Reference: <http://pubs.vmware.com/vsphere-51/index.jsp?topic=%2Fcom.vmware.vsphere.storage.doc%2FGUID-C1C4A725-8BE4-4875-919E-693812961366.html>

#### NEW QUESTION 121

What are two use cases for Fibre Channel Zoning in a vSphere environment? (Choose two.)

- A. Increases the number of targets presented to an ESXi host.
- B. Controls and isolates paths in a fabric.
- C. Controls and isolates paths to an NFS share.
- D. Can be used to separate different environments.

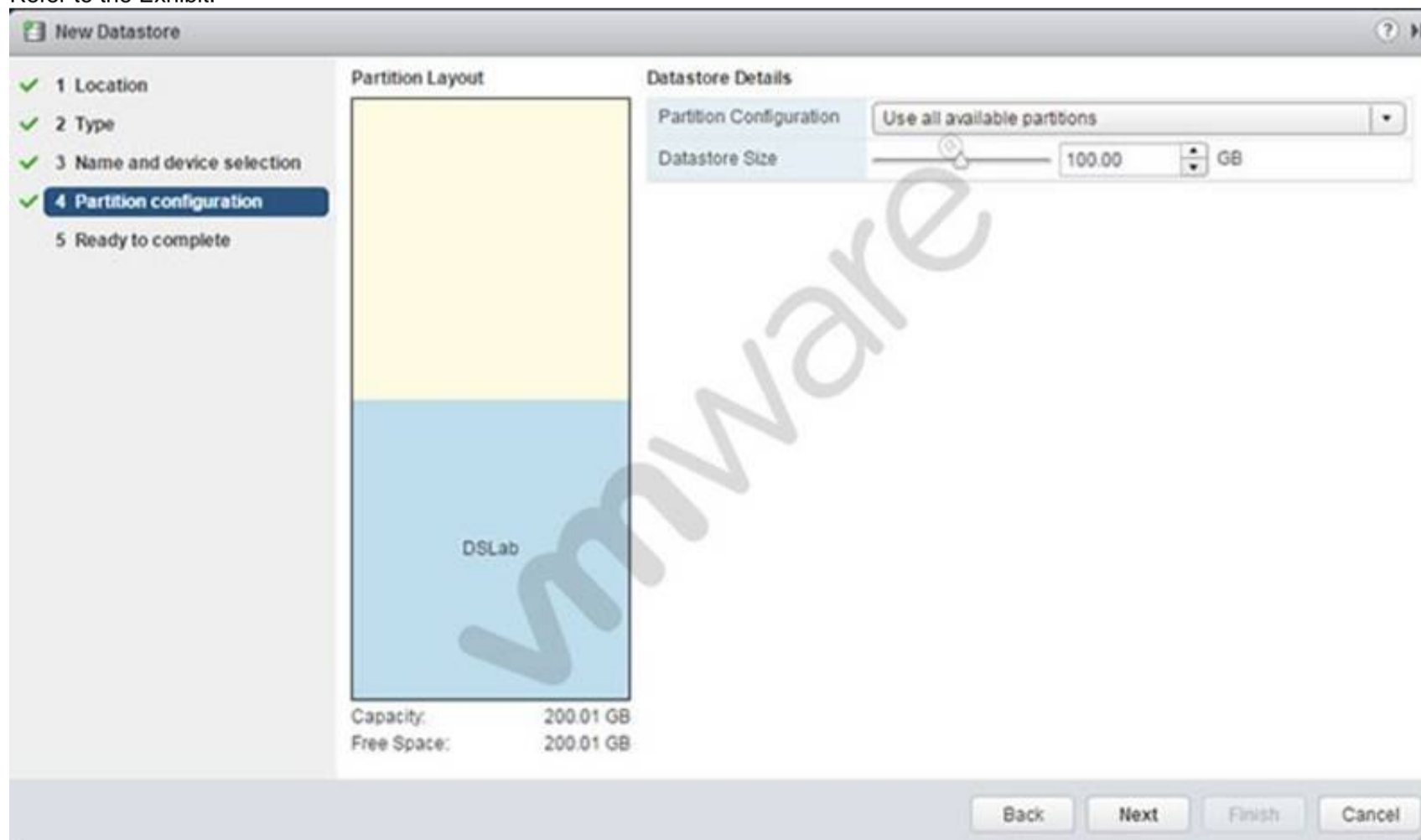
**Answer:** BD

**Explanation:** Zoning provides access control in the SAN topology. Zoning defines which HBAs can connect to which targets. When you configure a SAN by using zoning, the devices outside a zone are not visible to the devices inside the zone.

Reference: <https://pubs.vmware.com/vsphere-55/index.jsp?topic=%2Fcom.vmware.vsphere.storage.doc%2FGUID-E7818A5D-6BD7-4F51-B4BA-EFBF2D3A8357.html>

#### NEW QUESTION 125

Refer to the Exhibit.



What will be created upon completion of the steps in this wizard?

- A. 100GB VMFS5 datastore with free space available for expansion
- B. 100GB VMFS5 datastore with free space available for a second datastore
- C. 100GB VMFS3 datastore
- D. 200.01 GB VMFS5 datastore

**Answer:** A

**Explanation:** As you can see in the exhibit, the 100GB VMFS5 datastore is created with free space available for expansion.

#### NEW QUESTION 128

An administrator is having a problem configuring Storage I/O Control on a Datastore. Which two conditions could explain the issue? (Choose two.)

- A. A host is running ESXi 4.0.
- B. An ESXi host does not have appropriate licensing.
- C. The vCenter Server version is 5.0.
- D. The vCenter Server License is Standard.

**Answer:** AB

**Explanation:** Reference: [http://kb.vmware.com/selfservice/microsites/search.do?language=en\\_US&cmd=displayKC&externalId=2021530](http://kb.vmware.com/selfservice/microsites/search.do?language=en_US&cmd=displayKC&externalId=2021530)

#### NEW QUESTION 131

Refer to the Exhibit.



A vSphere 6.x environment is configured with VMware Virtual Volumes (VVOLs). An administrator accesses the cluster Actions menu, as shown in the Exhibit. Which option is used to create a VVOL on an existing VVOL container?

- A. Storage
- B. Deploy OVF Template
- C. New vApp
- D. Settings

**Answer:** A

**Explanation:** A storage container is the storage that is available physically on your storage array. Now I say physically but this could also be virtually presented storage even on an ESXi host but somewhere somehow it will be back-ended on some physical medium, be it HDD, SSD or hey, maybe even a super fast memory disk. Basically it's a chunk of physical storage somewhere. Capacity Pools are logical partitions carved out of these to provide a chunk of storage to your VM Admins. Capacity pools may also span multiple storage arrays even across sites. Now you could have a single capacity pool within your storage container or multiple depending on your requirements if you need some sort of logical separation for say separate tenants or separate VM admins needing their own separate chunk of storage but just simply think of it as a chunk of storage presented to your VM admins.

Reference: <http://www.wooditwork.com/2012/10/29/vmware-vvolumes-the-game-changing-future-for-storage-is-demoed/>

**NEW QUESTION 135**

Where is a Virtual SAN Fault Domain configured?

- A. VMware Virtual SAN Cluster configuration
- B. VMware High Availability Cluster configuration
- C. Distributed Resource Scheduler configuration
- D. Datacenter Advanced Settings configuration

**Answer:** A

**Explanation:** If your Virtual SAN cluster spans across multiple racks or blade server chassis in a data center and you want to make sure that your hosts are protected against rack or chassis failure, you can create fault domains and add one or more hosts to it.

A fault domain consists of one or more Virtual SAN hosts grouped together according to their physical location in the data center. When configured, fault domains enable Virtual SAN to tolerate failures of entire physical rack as well as failures of a single host, capacity device, network link or a network switch dedicated to fault domains. Fault domains cannot be configured for stretched or metro clusters.

The number of failures your cluster can tolerate depends on the number of failures a virtual machine is provisioned to tolerate. For example, when a virtual machine is configured with Number of failures to tolerate=1 and using multiple fault domains, Virtual SAN can tolerate a single failure of any kind and of any component in a fault domain, including the failure of an entire rack.

When you configure fault domains on a rack and provision a new virtual machine, Virtual SAN ensures that protection objects, such as replicas and witnesses are placed on different fault domains. If, for example, a virtual machine's storage policy is Number of failures to tolerate=n, Virtual SAN requires a minimum of 2\*n+1 fault domains in the cluster.

When virtual machines are provisioned in a cluster with fault domains using this policy, the copies of the associated virtual machine objects are stored across separate racks.

Reference: <http://pubs.vmware.com/vsphere-60/index.jsp?topic=%2Fcom.vmware.vsphere.virtualsan.doc%2FGUID-8491C4B0-6F94-4023-8C7A-FD7B40D0368D.html>

**NEW QUESTION 138**

Which two considerations should an administrator keep in mind when booting from Software Fiber Channel over Ethernet (FCoE)? (Choose two.)

- A. Software FCoE boot configuration can be changed from within ESXi.
- B. Software FCoE boot firmware cannot export information in FBFT format.
- C. Multipathing is not supported at pre-boot.
- D. Boot LUN cannot be shared with other hosts even on shared storage.

**Answer:** CD

**Explanation:** When you boot the ESXi host from SAN using software FCoE, certain requirements and considerations apply.

? You cannot change software FCoE boot configuration from within ESXi.

? Coredump is not supported on any software FCoE LUNs, including the boot LUN.

? Multipathing is not supported at pre-boot.

? Boot LUN cannot be shared with other hosts even on shared storage.

Reference:

<https://pubs.vmware.com/vsphere-55/index.jsp?topic=%2Fcom.vmware.vsphere.storage.doc%2FGUID-8E57EDC9-F122-4A81-8B80-FE19FFE832B1.html>

**NEW QUESTION 139**

An administrator observes that virtual machine storage activity on an ESXi 6.x host is negatively affecting virtual machine storage activity on another host that is accessing the same VMFS Datastore.

Which action would mitigate the issue?

- A. Enable Storage IO Control.
- B. Configure Storage DRS.
- C. Enable the Dynamic Queue Depth Throttling option.
- D. Configure the Disk.SchedNumReqOutstanding parameter.

**Answer:** A

**Explanation:** SIOC is extremely powerful, it can increase your consolidation ratios on the storage side, allowing more VM's per datastore. Which leads to lower storage costs and less administrative overhead.

So how does it work? At a basic level SIOC is monitoring the end to end latency of a datastore. When there is congestion (the latency is higher than the configured value) SIOC reduces the latency by throttling back VM's who are using excessive I/O. Now you might say, I need that VM to have all of those I/O's, which in many cases is true, you simply need to give the VMDK(s) of that VM a higher share value. SIOC will use the share values assigned to the VM's VMDK's to prioritize access to the datastore.

Just simply turning SIOC on will guarantee each VMDK has equal access to the datastore, shares fine tune that giving you the ability to give VMDK's more or less priority during times of contention.

Reference: <http://blogs.vmware.com/vsphere/2014/05/enabling-monitoring-storage-io-control.html>

**NEW QUESTION 144**

Which two statements are true regarding VMFS3 volumes in ESXi 6.x? (Choose two.)

- A. Creation of VMFS3 volumes is unsupported.
- B. Upgrading VMFS3 volumes to VMFS5 is supported.
- C. Existing VMFS3 volumes are unsupported.
- D. Upgrading VMFS3 volumes to VMFS5 is unsupported.

**Answer:** AB

**Explanation:** While a VMFS-3, which is upgraded to VMFS-5, provides you with most of the capabilities as a newly created VMFS-5, there are some differences.

Both upgraded and newly created VMFS-5 support single-extent volumes up to 64TB and both support VMDK sizes of ~2TB, no matter what the VMFS file-block size is. However additional differences, although minor, should be considered when making a decision whether to upgrade to VMFS-5 or create new VMFS-5 volumes.

Reference: [http://www.vmware.com/files/pdf/techpaper/VMFS-5\\_Upgrade\\_Considerations.pdf](http://www.vmware.com/files/pdf/techpaper/VMFS-5_Upgrade_Considerations.pdf)

#### NEW QUESTION 147

A device's vStorage API for Array Integration (VAAI) support status command line output shows:

naa.500253825002a865 VAAI Plugin Name: ATS Status: unsupported Clone Status: unsupported Zero Status: supported Delete Status: unsupported

What is the corresponding VAAI support status in the vSphere Web Client?

- A. Unknown
- B. Supported
- C. Not supported
- D. Unsupported

**Answer: A**

**Explanation:** The VAAI support status will be unknown. Reference:

<https://pubs.vmware.com/vsphere-55/index.jsp?topic=%2Fcom.vmware.vsphere.storage.doc%2FGUID-0520FD37-D7AD-4FBA-9A2E-E5F8211FCBBB.html>

#### NEW QUESTION 151

Refer to the Exhibit.

ADAPTER PATH	NPTH	CMDS/s	READS/s	WRITES/s	MBREAD/s	MBWRTN/s	DAVG/cmd	KAVG/cmd	GAVG/cmd	QAVG/cmd
vmhba0 -	1	6.68	0.00	0.00	0.00	0.00	0.25	0.03	0.28	0.01
vmhba1 -	1	0.00	0.00	0.00	0.00	0.00	0.00	0.00	0.00	0.00
vmhba32 -	0	0.00	0.00	0.00	0.00	0.00	0.00	0.00	0.00	0.00
vmhba33 -	2	184.06	85.35	97.27	5.31	4.88	160.91	0.01	160.92	0.00

An administrator is using the esxtop command to troubleshoot storage performance issues on a virtual machine. The esxtop capture is shown in the Exhibit. Based on the exhibit, which two statements are true? (Choose two.)

- A. The iSCSI device is experiencing high latency.
- B. The ESXi kernel is experiencing high latency.
- C. The Guest OS is experiencing high latency and response time.
- D. The NFS device is experiencing high latency.

**Answer: AC**

**Explanation:** The iSCSI device is having high latency. You can see the response time peaking with high latency for Guest OS.

Topic 4, Upgrade a vSphere Deployment

#### NEW QUESTION 154

An administrator wants to upgrade to vCenter Server 6.x.

The vCenter Server:

? Is hosted on a virtual machine server running Microsoft Windows Server 2008 R2, with 8 vCPUs and 16GB RAM.

? Will have an embedded Platform Services Controller.

? Hosts a Large Environment with 1,000 ESXi hosts and 10,000 Virtual Machines.

Why does the vCenter Server not meet the minimum requirements?

- A. Windows Server 2008 R2 is not a supported Operating System for vCenter Server.
- B. The virtual machine has insufficient resources for the environment size.
- C. The environment is too large to be managed by a single vCenter Server.
- D. The Platform Services Controller must be changed to an External deployment.

**Answer: B**

**Explanation:** The environment is very big with 1000 ESXi host and 10,000 virtual machines. Therefore, it is not enough and the vCenter server cannot meet these requirements.

#### NEW QUESTION 157

Which two supported tools can be used to upgrade virtual machine hardware? (Choose two.)

- A. vSphere Web Client
- B. vSphere Update Manager
- C. vmware-vmupgrade.exe
- D. esxcli vm hardware upgrade

**Answer: AB**

**Explanation:** VMware offers the following tools for upgrading virtual machines:

vSphere Client

Requires you to perform the virtual machine upgrade one step at a time, but does not require vSphere Update Manager.

vSphere Update Manager

Automates the process of upgrading and patching virtual machines, thereby ensuring that the steps occur in the correct order. You can use Update Manager to directly upgrade virtual machine hardware, VMware Tools, and virtual appliances. You can also patch and update third-party software running on the virtual machines and virtual appliances.

Reference: [https://pubs.vmware.com/vsphere-50/index.jsp?topic=%2Fcom.vmware.vsphere.upgrade.doc\\_50%2FGUID-EE77B0A9-F8FF-4785-BEAD-B6F04EE04492.html](https://pubs.vmware.com/vsphere-50/index.jsp?topic=%2Fcom.vmware.vsphere.upgrade.doc_50%2FGUID-EE77B0A9-F8FF-4785-BEAD-B6F04EE04492.html)

#### NEW QUESTION 160

Which log file would you examine to identify an issue which occurred during the pre- upgrade phase of a vCenter Server upgrade process?

- A. vcdb\_req.out
- B. vcdb\_export.out
- C. vcdb\_import.out
- D. vcdb\_inplace.out

**Answer:** A

**Explanation:** The vcdb\_req.err file tracks any errors that were identified during the pre-upgrade phase.

Reference: <http://pubs.vmware.com/vsphere-60/index.jsp?topic=%2Fcom.vmware.vsphere.upgrade.doc%2FGUID-5EAC8B84-0A95-41EC-AAF4-6CBBB3A5152A.html>

#### NEW QUESTION 161

An administrator is upgrading a vCenter Server Appliance and wants to ensure that all the prerequisites are met.

What action must be taken before upgrading the vCenter Server Appliance?

- A. Install the Client Integration Plug-in.
- B. Install the database client.
- C. Install the ODBC connector.
- D. Install the Update Manager Plug-in.

**Answer:** A

**Explanation:** You must install the Client Integration Plug-in before you deploy or upgrade the vCenter Server Appliance.

Reference: <https://pubs.vmware.com/vsphere-60/index.jsp?topic=%2Fcom.vmware.vsphere.upgrade.doc%2FGUID-CA16F78B-7890-4357-9760-AF8648806FE7.html>

#### NEW QUESTION 165

What three supported methods can be used to upgrade a host from ESXi 5.x to ESXi 6.x? (Choose three.)

- A. vSphere Update Manager
- B. vihostupdate
- C. esxcli
- D. vSphere Auto Deploy
- E. esxupdate

**Answer:** ACD

**Explanation:** Reference: <https://pubs.vmware.com/vsphere-60/index.jsp?topic=%2Fcom.vmware.vsphere.upgrade.doc%2FGUID-FE668788-1F32-4CB2-845C-5547DD59EB48.html>

#### NEW QUESTION 166

What command line utility can be used to upgrade an ESXi host?

- A. esxcli
- B. esxupdate
- C. vihostupdate
- D. esxcfg

**Answer:** A

**Explanation:** You can use the esxcli software profile update or esxcli software profile install command to upgrade or update an ESXi host.

Reference: <https://pubs.vmware.com/vsphere-51/index.jsp?topic=%2Fcom.vmware.vsphere.upgrade.doc%2FGUID-E51C5DB6-F28E-42E8-ACA4-0EBDD11DF55D.html>

#### NEW QUESTION 167

When upgrading vCenter Server, an administrator notices that the upgrade fails at the vCenter Single Sign-On installation.

What must be done to allow the upgrade to complete?

- A. Verify that the VMware Directory service can stop by manually restarting it.
- B. Verify that the vCenter Single Sign-On service can stop by manually restarting it.
- C. Uninstall vCenter Single Sign-On service.
- D. Uninstall the VMware Directory service.

**Answer:** A

**Explanation:** To verify that the VMware Directory Service is in a stable state and can stop, manually restart it. The VMware Directory service must stopped for the vCenter Server upgrade software to uninstall vCenter Single Sign-On during the upgrade process.

#### NEW QUESTION 171

What are three recommended prerequisites before upgrading virtual machine hardware? (Choose three.)

- A. Create a backup or snapshot of the virtual machine.
- B. Upgrade VMware Tools to the latest version.
- C. Verify that the virtual machine is stored on VMFS3, VMFS5, or NFS datastores.
- D. Detach all CD-ROM/ISO images from the virtual machines.
- E. Set the Advanced Parameter virtualHW.version = 11

**Answer:** ABC

**Explanation:** Reference: [https://pubs.vmware.com/vsphere-50/index.jsp?topic=%2Fcom.vmware.vsphere.upgrade.doc\\_50%2FGUID-A45CBEE5-C4D2-484E-A699-A5A577244DE0.html](https://pubs.vmware.com/vsphere-50/index.jsp?topic=%2Fcom.vmware.vsphere.upgrade.doc_50%2FGUID-A45CBEE5-C4D2-484E-A699-A5A577244DE0.html)

#### NEW QUESTION 174

Which two vCenter Server services are migrated automatically as part of an upgrade from a Distributed vCenter Server running 5.x? (Choose two.)

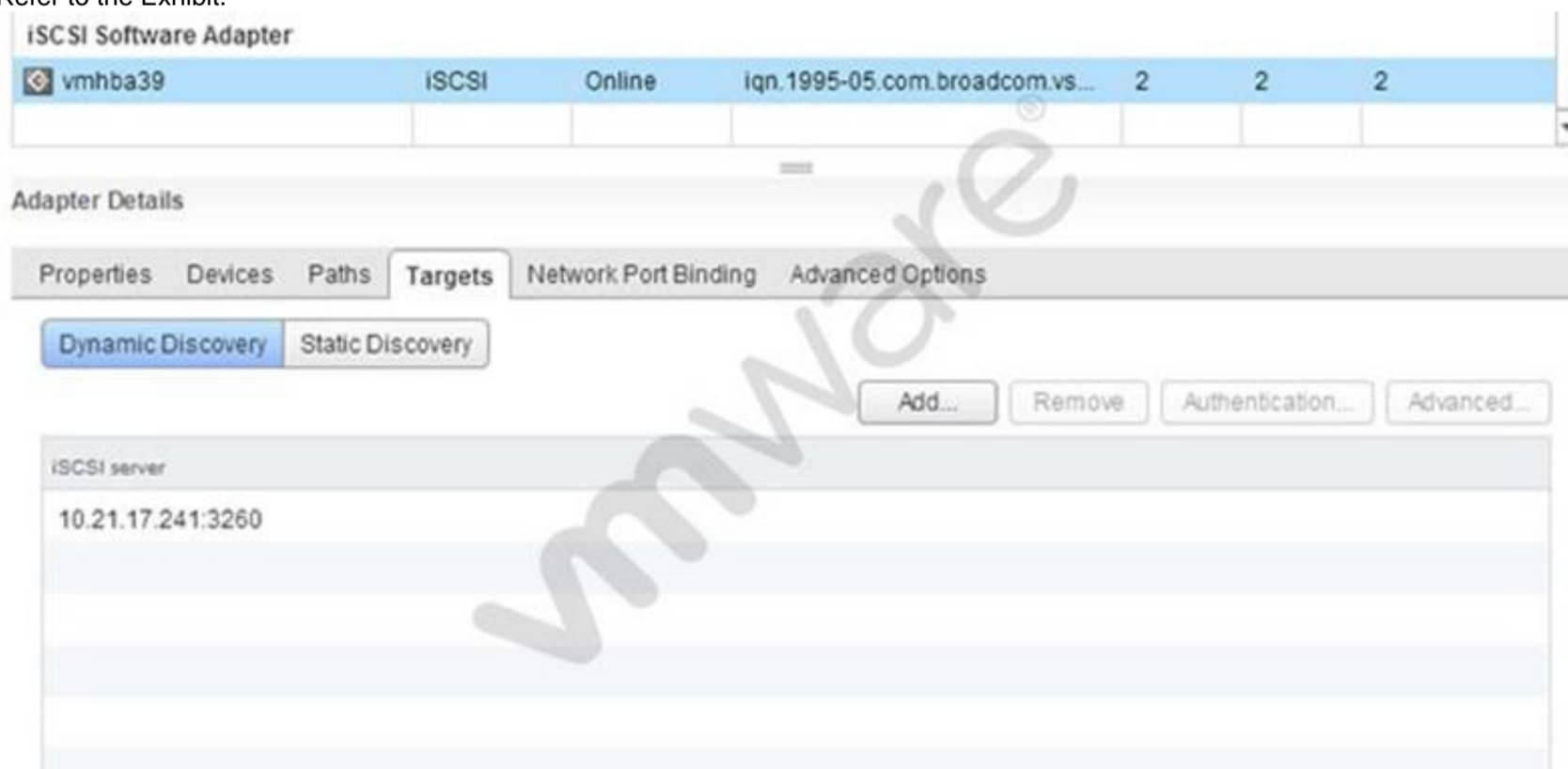
- A. vCenter Single Sign-on Service
- B. vSphere Web Client
- C. vSphere Inventory Service
- D. Storage Policy Based Management

**Answer:** BC

**Explanation:** vSphere web client and vSphere inventory services are migrated automatically during the Distributed vcenter server 5.x upgrade.

#### NEW QUESTION 179

Refer to the Exhibit.



Which tab shows the Hardware Acceleration support status?

- A. Devices
- B. Properties
- C. Paths
- D. Advanced Options

**Answer:** A

**Explanation:** Reference: [https://pubs.vmware.com/vsphere-4-esx-vcenter/index.jsp?topic=/com.vmware.vsphere.config\\_iscsi.doc\\_41/esx\\_server\\_config/managing\\_storage/c\\_hardware\\_acceleration\\_status.html](https://pubs.vmware.com/vsphere-4-esx-vcenter/index.jsp?topic=/com.vmware.vsphere.config_iscsi.doc_41/esx_server_config/managing_storage/c_hardware_acceleration_status.html)

#### NEW QUESTION 181

Which minor badge items make up the Efficiency badge score for an ESXi host in vCenter Operations Manager?

- A. Workload, Anomalies, Faults
- B. Workload, Stress, Density
- C. Time Remaining, Capacity Remaining

D. Reclaimable Waste, Density

**Answer:** D

**Explanation:** The third major badge that vC Ops reports is Efficiency. We all moved to virtualization in hopes of achieving greater efficiencies but there are varying degrees of efficiency so vC Ops is here to help ensure that you maximize the efficiency of your virtual infrastructure. The efficiency badge score is a weighted combination of Reclaimable Waste and Density.

Reference: <http://blogs.vmware.com/management/2014/04/david-davis-on-vcenter-operations-post-8-understanding-vcenter-operations-badges.html>

#### NEW QUESTION 184

When importing an existing SSL certificate into vSphere Replication Server, which file format is required?

- A. PKCS#12
- B. DER
- C. PEM
- D. PKCS#7

**Answer:** A

**Explanation:** vSphere Replication can only import and use certificates and private keys from a file in the PKCS#12 format. Sometimes these files have a .pfx extension.

Reference: <https://pubs.vmware.com/vsphere-51/topic/com.vmware.ICbase/PDF/vsphere-replication-51-admin.pdf>

#### NEW QUESTION 188

Vmware vSphere Replication protects virtual machines from partial or complete site failures by replicating the virtual machines between which three sites? (Choose three.)

- A. From a source site to a target site.
- B. From within a single site from one cluster to another.
- C. From multiple source sites to a shared remote target site.
- D. From a single source site to multiple remote target sites.
- E. From multiple source sites to multiple remote target sites.

**Answer:** ABC

**Explanation:** vSphere Replication replaces storage-based replication. It protects virtual machines from partial or complete site failures by replicating the virtual machines from a primary site to a secondary site.

Reference: [https://pubs.vmware.com/vsphere-51/index.jsp?topic=%2Fcom.vmware.vsphere.replication\\_admin.doc%2FGUID-C987AD18-7C2D-4FA6-B6E4-6B0DDA915A7A.html](https://pubs.vmware.com/vsphere-51/index.jsp?topic=%2Fcom.vmware.vsphere.replication_admin.doc%2FGUID-C987AD18-7C2D-4FA6-B6E4-6B0DDA915A7A.html)

#### NEW QUESTION 192

Which three parameters should be considered when calculating the bandwidth for vSphere Replication? (Choose three.)

- A. Data change rate
- B. Traffic rates
- C. Link speed
- D. Application type
- E. Hardware type

**Answer:** ABC

**Explanation:** Reference: <http://blogs.vmware.com/smb/2015/05/vsphere-replication-bandwidth-requirements.html>

#### NEW QUESTION 194

Which keystore would a vSphere Replication administrator use to manually add an additional Certificate Authority certificate?

- A. hms-truststore.jks
- B. hms-keystore.jks
- C. certificates.ks
- D. cacerts.ks

**Answer:** A

**Explanation:** Reference: [http://kb.vmware.com/selfservice/microsites/search.do?language=en\\_US&cmd=displayKC&externalId=2080395](http://kb.vmware.com/selfservice/microsites/search.do?language=en_US&cmd=displayKC&externalId=2080395)

#### NEW QUESTION 195

An administrator subscribes to the vCloud Air Disaster Recovery service. Which replicated objects can be directly monitored and managed?

- A. Virtual machine Snapshots
- B. vApps

- C. Virtual machines
- D. ESXi Hosts

**Answer:** C

**Explanation:** You use vSphere Replication at your source site to configure your environment and replicate virtual machines to vCloud Air. You can use vSphere Replication, the vCloud Air portal, or the vCloud Air plug-in to monitor and manage the replicated virtual machines in the cloud.

Reference: [http://pubs.vmware.com/vchsplugin-15/topic/com.vmware.ICbase/PDF/vca\\_plugin\\_using.pdf](http://pubs.vmware.com/vchsplugin-15/topic/com.vmware.ICbase/PDF/vca_plugin_using.pdf)

#### NEW QUESTION 200

An administrator has created a resource pool named Marketing HTTP with a Memory Limit of 24 GB and a CPU Limit of 10,000 MHz.

The Marketing HTTP resource pool contains three virtual machines:

? Mktg-SQL has a memory reservation of 16 GB.

? Mktg-App has a memory reservation of 6 GB.

? Mktg-Web has a memory reservation of 4 GB.

What would happen if all three virtual machines are powered on?

- A. All three virtual machines can power on, but will have memory contention.
- B. All three virtual machines can power on without memory contention.
- C. Only two of the three virtual machines can power on.
- D. Only one of the virtual machines can power on.

**Answer:** C

**Explanation:** Since the limit of 24 GB and CPU limit of 10,000 MH is enforced, only two of the virtual machines can power on simultaneously.

#### NEW QUESTION 201

What is the compression algorithm used by vSphere Replication to compress data at the source?

- A. FastLZ
- B. Lz4
- C. Lzr
- D. Lzx

**Answer:** A

**Explanation:** vSphere Replication 6.0 utilizes the FastLZ compression library. This provides a nice balance of speed, minimal CPU overhead, and compression efficiency. When using vSphere 6.0 and vSphere Replication 6.0 at both the source and target locations, updates are compressed at the source and stay compressed until they are written to storage at the target. In cases where there is a mixed configuration, packets may be decompressed at some point in the replication path. For example, if a vSphere 6.0 host is connecting to a vSphere Replication 5.8 virtual appliance, packets will not be compressed over the network. Another example: vSphere 6.0 replicating to a vSphere Replication 6.0 virtual appliance, which is writing to vSphere 5.5 host storage - packets are compressed from the source to the vSphere Replication 6.0 virtual appliance, but are decompressed in the appliance before being written to the vSphere 5.5 storage at the target. Performing this decompression in the vSphere Replication virtual appliance will cause higher vCPU utilization in the appliance. As you can imagine, the most benefit from compression will be realized when running vSphere 6.0 and vSphere Replication 6.0 at both the source and target locations.

Reference: <http://blogs.vmware.com/vsphere/2015/03/vr-60-compression.html>

#### NEW QUESTION 202

Which three logs can be reviewed to troubleshoot a vCenter Server upgrade failure? (Choose three.)

- A. vminst.log
- B. vim-vcs-msi.log
- C. pkgmgr.log
- D. vc-upgrade.log
- E. firstboot.log

**Answer:** ABC

**Explanation:** Reference: [http://kb.vmware.com/selfservice/microsites/search.do?language=en\\_US&cmd=displayKC&externalId=2007864](http://kb.vmware.com/selfservice/microsites/search.do?language=en_US&cmd=displayKC&externalId=2007864)

#### NEW QUESTION 207

An administrator is troubleshooting a virtual machine that has unexpectedly powered off. Which two logs should be used to troubleshoot the issue? (Choose two.)

- A. vmware.log
- B. hostd.log
- C. syslog.log
- D. shell.log

**Answer:** AB

**Explanation:** Vmware.log and hostd.log should be checked when the VM unexpectedly powers off.

Reference:

[http://kb.vmware.com/selfservice/microsites/search.do?language=en\\_US&cmd=displayKC&externalId=1019064](http://kb.vmware.com/selfservice/microsites/search.do?language=en_US&cmd=displayKC&externalId=1019064)

**NEW QUESTION 210**

A task fails while creating a VMFS5 datastore on a disk with these characteristics:

? Was previously used by a Linux server

? Was not erased

? Is visible with the vSphere Web Client

Which action can be performed to resolve the issue?

A. Delete the partitions on the disk manually with partedUtil first.

B. Create a VMFS3 file system first, then upgrade it.

C. Create the VMFS5 file system manually using vmkfstools.

D. Delete the data with the vmkfstools command.

**Answer:** A

**Explanation:** To erase the data, use partedutil first on the disk manually.

**NEW QUESTION 214**

A failed upgrade from vCenter Server version 5.x to version 6.0 produces the following error:

[00800 error 'Default'] Database version id '600' is incompatible with this release of VirtualCenter.

What is the cause of the upgrade failure?

A. There was a database schema upgrade failure during the installation.

B. The VMWAREVCMSDS service was upgraded before the vCenter Server service.

C. The VMware Directory Service database failed during the installation.

D. There was an incompatible ODBC driver version for the database.

**Answer:** A

**Explanation:** The error shows that the database schema upgrade failed during installation.

**NEW QUESTION 218**

An administrator has a virtual machine configured with the following settings:

? ESXi version: 5.1

? CPU: vCPUs 6

? Memory: 48GB

? Hardware version: 7

? VMware Tools: Installed

Which two actions must the administrator take in order to utilize vNUMA? (Choose two.)

A. Upgrade the ESXi host to vSphere 5.5 or later.

B. Upgrade to Virtual Hardware version 8.

C. Configure numa.vcpu.min to 5

D. Configure numa.vcpu.min to 6

**Answer:** BC

**Explanation:** vNUMA can be used by upgrading to virtual hardware version 8. To enable vNUMA on 8 way or smaller VMs, modify the numa.vcpu.min setting.

Reference: <http://community.spiceworks.com/topic/589415-vmware-cpu-settings>

**NEW QUESTION 219**

An administrator notices that a Windows virtual machine is using 95% CPU in Task Manager.

Which two actions should be taken to resolve this issue? (Choose two.)

A. Increase the memory reservation of the virtual machine.

B. Increase the CPU Shares on the resource pool where the virtual machine resides.

C. Decrease the CPU reservation of the virtual machine.

D. Increase the CPU limit on the resource pool where the virtual machine resides.

**Answer:** BD

**Explanation:** There are two ways to resolve high CPU usage. First increase CPU shares on resource pool where the VM resides. Secondly, increase CPU limit on the resource pool that serves the concerned VM.

**NEW QUESTION 221**

An administrator is unable to patch an ESXi 6.x host using VMware Update Manager. What is an alternative option for patching a host?

A. Upload the offline bundle to a datastore and execute the command `esxcli software vib install -d` to apply it manually.

B. Upload the vib to a datastore and execute the command `esxcli software vib install -d` to apply it manually.

C. Upload the offline bundle to a datastore and execute the command `esxupdate install -v` to apply it manually.

D. Upload the vib to a datastore and execute the command `esxupdate install -v` to apply it manually.

**Answer:** A

**Explanation:** To patch a host, upload the offline bundle to a datastore and use esxcli software vib install -d to apply it manually.

Reference: <http://pubs.vmware.com/vsphere-60/topic/com.vmware.vsphere.install.doc/GUID-16B7EA91-03E6-40FA-8C9F-46F3881F1BAF.html>

#### NEW QUESTION 222

An administrator uses the df -h command and notices that an NFS datastore is reporting a capacity of 0 Bytes. What condition would cause this to occur?

- A. The NFS server on which the datastore resides is down.
- B. The datastore was mounted as Read/Write.
- C. The datastore was mounted as Read-Only.
- D. The datastore was created with NFS version 4.1.

**Answer:** A

**Explanation:** IF the NFS datastore is showing 0 bytes of capacity when you use df -h command, it means that the NFS server that hosts datastore is down.

#### NEW QUESTION 225

A virtual machine is exhibiting these symptoms:

? Memory usage is constantly high (94% or greater) or constantly low (24% or less).

? Free memory is consistently 6% or less and swapping frequently occurs

Which three solutions could correct this problem? (Choose three.)

- A. Verify that VMware Tools is installed on each virtual machine.
- B. Decrease the memory reservation setting, if higher than active memory.
- C. Add physical memory to the host.
- D. Disable the balloon driver in each virtual machine.
- E. Create a memory limit for each virtual machine.

**Answer:** ABC

**Explanation:** Make sure VMware tools are installed on each VM. To weed out the problem, decrease the memory reservation setting if it is higher than active memory or add physical memory to the host to increase its capacity.

#### NEW QUESTION 227

An administrator is troubleshooting a CPU issue for a virtual machine. The following is seen in esxtop:

? CPU0 is at 100% usage

? The remaining logical CPUs are close to 0%

? %RDY value is consistently above 10%

What is likely the cause of the CPU issue?

- A. The virtual machine has a CPU limit configured.
- B. The virtual machine's guest operating system is configured for SMP.
- C. The virtual machine has CPU affinity configured.
- D. The virtual machine is configured with a CPU reservation.

**Answer:** C

**Explanation:** By setting a CPU affinity on the virtual machine you are limiting the available CPUs on which the virtual machine can run. It does not dedicate that CPU to that virtual machine and therefore does not restrict the CPU scheduler from using that CPU for other virtual machines.

Reference: <http://frankdenneman.nl/2011/01/11/beating-a-dead-horse-using-cpu-affinity/>

#### NEW QUESTION 228

The command esxcli network vm list displays four virtual machines connected to the

Production vSwitch. Within the vSphere Web Client, five virtual machines are seen. What explains this behavior?

- A. The fifth virtual machine is currently powered off.
- B. The fifth virtual machine has two vNICs.
- C. The fifth virtual machine has an invalid IP address.
- D. The fifth virtual machine has an invalid MAC address.

**Answer:** A

**Explanation:** The vSphere client shows all the virtual machines whether they are powered on or off. The fifth virtual machine in this scenario might be powered off. Esxcli network list display virtual machines that are active.

#### NEW QUESTION 232

After successfully adding a new ESXi 6.x host to vCenter Server, an administrator sees it as Not Responding in the vSphere Web Client interface a few minutes later.

If the issue is caused by a network firewall blocking traffic, which port must be opened to correct this specific problem?

- A. 443 (TCP)

- B. 443 (UDP)
- C. 902 (TCP)
- D. 902 (UDP)

**Answer:** D

**Explanation:** Reference: [http://kb.vmware.com/selfservice/microsites/search.do?language=en\\_US&cmd=displayKC&externalId=2020669](http://kb.vmware.com/selfservice/microsites/search.do?language=en_US&cmd=displayKC&externalId=2020669)

#### NEW QUESTION 237

Attempting to update an ESXi 6.x host using the following command: `esxcli software vib update -d update.zip`

Generates the following error:

Could not download from depot at /tmp/index.xml, skipping (('tmp/index.xml', '[Errno 4] IOError: <urlopen error [Error 2] No such file or directory: 'tmp/index.xml'>')) url = /tmp/index.xml

What action should be taken to correct the problem?

- A. Add the full file path to the command.
- B. Use the update option instead of install.
- C. Use the switch `-d` instead of `-v`.
- D. Replace `esxcli` with `esxupdate`.

**Answer:** A

**Explanation:** You have to add full file path to the command instead of mentioning the file name only.

#### NEW QUESTION 240

An administrator is attempting to enable Fault Tolerance on a virtual machine with 4 vCPUs and observes the following in the vSphere Web Client:

Fault Tolerance has not been licensed on host <hostname>.

What is the minimum licensed edition that supports this configuration?

- A. Enterprise
- B. Enterprise Plus
- C. Standard
- D. Essentials Plus

**Answer:** A

**Explanation:** Fault Tolerance is not licensed in all editions of VMware vSphere. Check the edition you are running and upgrade to an edition that includes Fault Tolerance.

Reference: [http://kb.vmware.com/selfservice/microsites/search.do?language=en\\_US&cmd=displayKC&externalId=1033634](http://kb.vmware.com/selfservice/microsites/search.do?language=en_US&cmd=displayKC&externalId=1033634)

#### NEW QUESTION 241

Refer to the Exhibit.

Storage Adapters						
Adapter	Type	Status	Identifier	Targets	Devices	Paths
vmhba34	Block SCSI	Unknown		0	0	0
QLogic NetXtreme II iSCSI Adapter						
vmhba32	iSCSI	Unbound	bnx2i-001018ed2ab0(iqn.1998...	0	0	0
vmhba33	iSCSI	Unbound	bnx2i-001018ed2ab2(iqn.1998...	0	0	0
iSCSI Software Adapter						
vmhba39	iSCSI	Online	iqn.1995-05.com.broadcom.vs...	1	1	1

The Exhibit shows the status of vmhba32 and vmhba33 as Unbound. What is a likely reason for this status?

- A. The host bus adapter is not associated with a vmknfc.
- B. The Dynamic Target Discovery was not configured.
- C. The Static Target Discovery was not configured.
- D. The host bus adapter is not associated with a vmnic.

**Answer:** A

**Explanation:** Reference: [http://kb.vmware.com/selfservice/microsites/search.do?language=en\\_US&cmd=displayKC&externalId=1025644](http://kb.vmware.com/selfservice/microsites/search.do?language=en_US&cmd=displayKC&externalId=1025644)

#### NEW QUESTION 246

Which two reasons would prevent Storage Distributed Resource Scheduler (SDRS) from operating on a datastore? (Choose two.)

- A. The datastore has Storage I/O Control disabled.
- B. The datastore is connected to an unsupported host.
- C. The datastore is hosted on an NFS server.
- D. The datastore is hosted on an iSCSI server.

**Answer:** AB

#### NEW QUESTION 247

An administrator is troubleshooting network communications between the vCenter Server and the ESXi 6.x host. Which log shows the interaction events between these components?

- A. /var/log/syslog.log
- B. /var/log/hostd.log
- C. /var/log/vpxa.log
- D. /var/log/fdm.log

**Answer:** C

**Explanation:** When an ESXi 5.1 / 5.5 host is managed by vCenter Server 5.1 and 5.5, two components are installed, each with its own logs:  
? /var/log/vpxa.log: vCenter Server vpxa agent logs, including communication with vCenter Server and the Host Management hostd agent.  
? /var/log/fdm.log: vSphere High Availability logs, produced by the fdm service.  
Reference: [http://kb.vmware.com/selfservice/microsites/search.do?language=en\\_US&cmd=displayKC&externalId=2032076](http://kb.vmware.com/selfservice/microsites/search.do?language=en_US&cmd=displayKC&externalId=2032076)

#### NEW QUESTION 252

An administrator is attempting to enable Legacy Fault Tolerance (FT) on a virtual machine and observes the following in the vSphere Web Client: Fault Tolerance has not been licensed on host <hostname>. What is the minimum licensed edition that supports this configuration?

- A. Standard
- B. Enterprise
- C. Enterprise Plus
- D. Essentials Plus

**Answer:** A

**Explanation:** Fault Tolerance is not licensed in all editions of VMware vSphere. Check the edition you are running and upgrade to an edition that includes Fault Tolerance.  
Reference: [http://kb.vmware.com/selfservice/microsites/search.do?language=en\\_US&cmd=displayKC&externalId=1033634](http://kb.vmware.com/selfservice/microsites/search.do?language=en_US&cmd=displayKC&externalId=1033634)

#### NEW QUESTION 255

An administrator is unable to see performance statistics for only the Past Week performance data. The vCenter Server is using a Microsoft SQL Server Database. What are three likely causes contributing to this issue? (Choose three.)

- A. Performance statistics are turned off.
- B. The Past Day rollup job is not present.
- C. The stats\_rollup\_1\_proc is not present.
- D. The VMware Performance Charts Service is stopped.
- E. The JDBC URL is incorrect in the vcdb.properties file.

**Answer:** ABC

**Explanation:** If you are unable to see the performance data, it means that either the performance statistics is off or the past day roll up job is not present. Stats\_rollup\_proc also seems not to be present.

#### NEW QUESTION 257

When troubleshooting a performance related issue, an administrator sees the following warning message on an ESXi Console: Significant imbalance between NUMA nodes detected. Performance may be impacted. Which action should the administrator take to correct this problem?

- A. Ensure that the RAM modules are evenly balanced between processor sockets in the physical server.
- B. Ensure that all memory banks associated with CPU Socket 0 in the physical server are completely filled.
- C. Ensure that the physical server has the maximum amount of RAM modules that it can support.
- D. Ensure that all RAM modules in the host are Error-correcting code (ECC) modules.

**Answer:** A

**Explanation:** Reference: [http://kb.vmware.com/selfservice/microsites/search.do?language=en\\_US&cmd=displayKC&externalId=1018754](http://kb.vmware.com/selfservice/microsites/search.do?language=en_US&cmd=displayKC&externalId=1018754)

#### NEW QUESTION 261

An administrator notices that one virtual machine is in an orphaned state. What are two reasons that a virtual machine can appear as orphaned? (Choose two.)

- A. A VMware High Availability host failure has occurred.

- B. The virtual machine was unregistered directly on the host.
- C. The ESXi host is disconnected.
- D. The user does not have privilege to access the virtual machine.

**Answer:** AB

**Explanation:** Virtual machines can become orphaned if a host failover is unsuccessful, or when the virtual machine is unregistered directly on the host. If this situation occurs, move the orphaned virtual machine to another host in the datacenter that has access to the datastore on which the virtual machine files are stored.

Reference: [https://pubs.vmware.com/vsphere-50/index.jsp?topic=%2Fcom.vmware.vsphere.troubleshooting.doc\\_50%2FGUID-BFD8C9BC-30FB-4A92-AFEC-2FC9FF387920.html](https://pubs.vmware.com/vsphere-50/index.jsp?topic=%2Fcom.vmware.vsphere.troubleshooting.doc_50%2FGUID-BFD8C9BC-30FB-4A92-AFEC-2FC9FF387920.html)

#### NEW QUESTION 262

A user notifies an administrator that Content Libraries are not visible. What is a possible solution?

- A. Assign the user the read-only role at the global permission level.
- B. Assign the user the read-only role at the vCenter Server root level.
- C. Assign the user the read-only role at the vCenter Server data center level.
- D. Assign the user the read-only role at the vCenter Server cluster level.

**Answer:** A

**Explanation:** The direct parent for content libraries is the global root. This means that if you set a permission at a vCenter Server level and propagate it to the children objects, the permission applies to data centers, folders, clusters, hosts, virtual machines, and so on, but does not apply to the content libraries that you see and operate with in this vCenter Server instance. To assign a permission on a content library, an Administrator must grant the permission to the user as a global permission. Global permissions support assigning privileges across solutions from a global root object.

Reference:

[http://pubs.vmware.com/vsphere-60/index.jsp?topic=%2Fcom.vmware.vsphere.vm\\_admin.doc%2FGUID-18F4B892-D685-4473-AC25-3195D68DFD90.html](http://pubs.vmware.com/vsphere-60/index.jsp?topic=%2Fcom.vmware.vsphere.vm_admin.doc%2FGUID-18F4B892-D685-4473-AC25-3195D68DFD90.html)

#### NEW QUESTION 263

An administrator has migrated a vCenter Server Appliance from version 5.5 to version 6.x. During the migration, the administrator selected DHCP for the appliance and obtained a hostname from the DHCP server. The administrator adjusts the hostname after the migration and uses a static IP and hostname. What should the administrator do immediately after this change to prevent service failures?

- A. Regenerate the SSL certificates.
- B. Re-register components to Single Sign-On.
- C. Update the /etc/hosts file.
- D. Execute the command `services.restart vmware-vpxd`.

**Answer:** A

**Explanation:** To resolve this issue, regenerate the vCenter Server certificate using a stronger public key strength.

Reference: [http://kb.vmware.com/selfservice/microsites/search.do?language=en\\_US&cmd=displayKC&externalId=2074942](http://kb.vmware.com/selfservice/microsites/search.do?language=en_US&cmd=displayKC&externalId=2074942)

#### NEW QUESTION 266

An administrator is observing slow performance of the vCenter Inventory Service and observes the entries from the wrapper.log file:  
Exception in thread "tomcat-exec-2" java.lang.OutOfMemoryError: Java heap space  
Exception in thread "http-bio-0.0.0.0-10443-Acceptor-0"  
java.lang.OutOfMemoryError: Java heap space  
What should the administrator do to resolve the problem?

- A. Increase the memory resources of the vCenter Server.
- B. Increase the values using `cloudvm-ram-size`.
- C. Increase the memory resources of the Platform Services Controller.
- D. Increase the `wrapper.java.maxmemory` value in `wrapper.conf`.

**Answer:** A

**Explanation:** Reference: <http://stackoverflow.com/questions/19769675/tomcat-7-outofmemoryerror-from-uncaughtexceptionhandler>

#### NEW QUESTION 271

An administrator is unable to upgrade a vCenter Server Appliance from version 5.1 Update 2 to version 6.0. What is a likely reason for this?

- A. vCenter Server Appliance 6.0 does not support upgrades from version 5.1 Update 2.
- B. vCenter Server Appliance must be joined to an Active Directory domain before upgrading to version 6.0.
- C. vCenter Server Appliance 5.1 Update 2 uses an incompatible database for upgrading to version 6.0.
- D. vCenter Server Appliance 6.0 must be upgraded using the vSphere Web Client.

**Answer:** A

**Explanation:** Reference: <http://pubs.vmware.com/vsphere-60/topic/com.vmware.vsphere.upgrade.doc/GUID-6A5C596D-103E-4024-9353-5569263EB427.html>

**NEW QUESTION 276**

Refer to the Exhibit.

```
7:03:33pm up 17 days 6:15, 750 worlds, 21 VMs, 47 vCPUs: CPU load average: 0.17, 0.24, 0.28
Power Usage: 158W, Power Cap: N/A
PSTATE MHZ:
```

CPU	%USED	%UTIL	%C0	%C1	%C2
0	8.0	17.5	18	52	30
1	4.9	11.9	12	49	39
2	7.7	15.8	16	63	21
3	3.3	8.0	8	56	36
4	9.3	19.0	19	64	17
5	3.8	9.4	9	65	26
6	5.2	11.6	11	60	28
7	6.8	14.1	14	54	32
8	4.8	10.6	11	77	12
9	4.4	9.4	9	55	35
10	3.2	7.6	9	76	14
11	3.5	8.0	8	59	33
12	13.8	25.8	24	34	41
13	7.4	14.9	15	35	50
14	13.6	25.6	26	26	48
15	3.6	7.9	8	44	48
16	6.8	13.3	13	23	63
17	3.5	7.5	7	31	62
18	6.4	12.5	12	33	55
19	3.4	7.2	7	29	64
20	2.7	5.7	6	37	58
21	5.2	9.6	10	19	72
22	4.5	8.7	9	33	58
23	4.4	8.5	8	41	51

An administrator is troubleshooting intermittent poor performance of virtual machines in a vSphere 6.x cluster. Investigating esxtop data shows that the only statistic that stands out is %CSTP as depicted in Exhibit 1:

```
7:03:33pm up 44 days 2:04, 882 worlds, 1 VMs, 8 vCPUs: CPU load average: 1.31, 1.36, 1.34
PCPU UTIL(%): 98 98 99 99 AVG: 98
PCPU STATE(%): 98 98 98 99 AVG: 98
```

ID	WORLD NAME	WORLD	%USED	%CSTP	%WAIT	%VSWAIT	%STY	%IDLE	%WORLD	%CSTP
20471881	20471881 TestVM	10	100.25	2.42	0.00	802.21	0.00	87.79	0.00	88.85
20471882	20471882 Blademo	10	187.29	2.42	0.00	801.36	0.18	88.29	0.00	88.81

The administrator proceeds to switch to the Power Management screen and observes the data depicted in Exhibit 2:

```
7:03:33pm up 17 days 6:15, 750 worlds, 21 VMs, 47 vCPUs: CPU load average: 0.17, 0.24, 0.28
Power Usage: 158W, Power Cap: N/A
PSTATE MHZ:
```

CPU	%USED	%UTIL	%C0	%C1	%C2
0	8.0	17.5	18	52	30
1	4.9	11.9	12	49	39
2	7.7	15.8	16	63	21
3	3.3	8.0	8	56	36
4	9.3	19.0	19	64	17
5	3.8	9.4	9	65	26
6	5.2	11.6	11	60	28
7	6.8	14.1	14	54	32
8	4.8	10.6	11	77	12
9	4.4	9.4	9	55	35
10	3.2	7.6	9	76	14
11	3.5	8.0	8	59	33
12	13.8	25.8	24	34	41
13	7.4	14.9	15	35	50
14	13.6	25.6	26	26	48
15	3.6	7.9	8	44	48
16	6.8	13.3	13	23	63
17	3.5	7.5	7	31	62
18	6.4	12.5	12	33	55
19	3.4	7.2	7	29	64
20	2.7	5.7	6	37	58
21	5.2	9.6	10	19	72
22	4.5	8.7	9	33	58
23	4.4	8.5	8	41	51

Based on the information in the exhibits, which two configurations are probable causes of the poor performance? (Choose two.)

- A. The active power policy is set to Low Power.
- B. The host has active Sleep States configured in the BIOS.
- C. The active power policy is set to High Performance.
- D. The host has active Power States configured in the BIOS.

**Answer: AB**

**Explanation:** It seems that the active power policy has a low power setting and the host has active sleep states configured in the BIOS.

#### NEW QUESTION 279

When attempting to remove a host from a vSphere Distributed Switch (vDS), an administrator observes the error message:

The resource '16' is in use

What are two reasons why this error would be displayed? (Choose two.)

- A. Vmkernel network adapters on the vDS are in use.
- B. Virtual machine network adapters are connected to the vDS.
- C. Network I/O Control has been configured on the vDS.
- D. There is active network traffic on the vDS.

**Answer:** AB

**Explanation:** Reference: <https://pubs.vmware.com/vsphere-55/index.jsp?topic=%2Fcom.vmware.vsphere.troubleshooting.doc%2FGUID-038AC93F-D710-48ED-8E3B-258A23FB2930.html>

#### NEW QUESTION 283

An administrator wants to monitor virtual machines on a host and send notifications when memory usage reaches 80%.

What should the administrator create in vCenter Server to accomplish this?

- A. A host alarm that will monitor virtual machine memory usage and set a trigger to email the notification.
- B. A vCenter Server alarm that will monitor virtual machine memory usage and set an action to email the notification.
- C. A host alarm that will monitor virtual machine memory usage and set an action to email the notification.
- D. A vCenter Server alarm that will monitor virtual machine memory usage and set a trigger to email the notification.

**Answer:** B

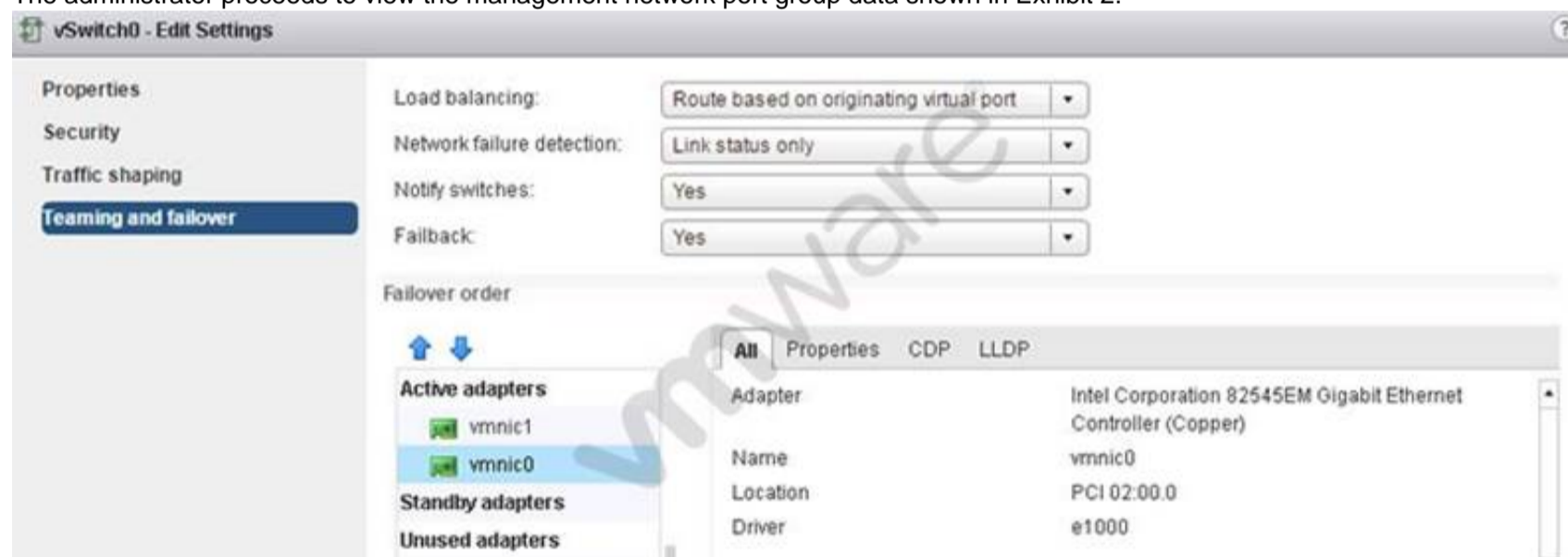
**Explanation:** For notifications, set the vCenter Server alarm to monitor virtual machine memory usage and configure set action to email the notification.

#### NEW QUESTION 288

An administrator has recently configured HA on a cluster. After reviewing the summary tab on one of the hosts, the warning in Exhibit 1 is displayed:



The administrator proceeds to view the management network port group data shown in Exhibit 2:



The administrator then views the management network vSwitch as shown in Exhibit 3:



Based on the exhibits, which two steps should be taken to ensure redundancy on the management network? (Choose two.)

- A. Move vmnic1 to Standby adapters.
- B. Add an additional vmknics to the Network Adapters and move it to Active adapters.
- C. Set the advanced HA configuration parameter das.ignoreRedundantNetWarning to True.
- D. Uncheck the Override Failover Checkbox on the management network port group.

**Answer:** AD

**Explanation:** Enabling redundancy is important for fault tolerance. Move vmnic1 to standby adapters and uncheck the override failover checkbox on the management network port group.

#### NEW QUESTION 291

Which condition would cause a vCenter Server installation to fail when installing on a Windows virtual machine?

- A. The virtual machine does not have at least four vCPUs.
- B. The virtual machine is running Windows Server 2008.
- C. The virtual machine has an E1000 network device.
- D. The virtual machine does not have 16GB of RAM.

**Answer:** B

**Explanation:** If you use Simple Install to install vCenter Server and components on a Windows Server 2008 R2 or Windows 2012 host, and the host is configured to use DHCP IP addressing, the installation fails with warning and error messages.

Reference: <https://www.vmware.com/support/vsphere5/doc/vsphere-vcenter-server-550b-release-notes.html#installissues>

#### NEW QUESTION 292

Deletion of an NFS datastore generates the following error: Sysinfo error on operation returned the following status: Busy  
Which step can be performed that will allow the deletion to complete successfully?

- A. Storage vMotion any virtual machines on the datastore to another location.
- B. Remove the datastore from the Storage DRS cluster in which it resides.
- C. Verify the value of the NFS.HeartbeatDelta is not set to 0.
- D. Suspend any running virtual machines and unmount the NFS datstore.

**Answer:** A

**Explanation:** Reference:

[http://kb.vmware.com/selfservice/microsites/search.do?language=en\\_US&cmd=displayKC&externalId=2102598](http://kb.vmware.com/selfservice/microsites/search.do?language=en_US&cmd=displayKC&externalId=2102598)

#### NEW QUESTION 295

When a Content Library is deleted, what happens to the files contained on the backing storage?

- A. The files will be unchanged.
- B. The files will be deleted.
- C. The files will remain and be marked as orphaned.
- D. The containing folder will be marked as orphaned.

**Answer:** B

**Explanation:** When the content library is deleted, the files in backup storage will also be deleted.

#### NEW QUESTION 297

Which three troubleshooting actions should an administrator take to address slow performance when deploying a virtual machine template? (Choose three.)

- A. Increase network throughput by adding additional uplinks to the vSwitch.
- B. Change the destination datastore or volume for the virtual machine template.
- C. Configure a Provisioning Traffic vmkernel port to perform the deployment operation.
- D. Reduce the size of the virtual machine template's virtual disk.
- E. Deploy the virtual machine template to the cluster and allow Distributed Resource Scheduler to register the virtual machine.

**Answer:** ABC

**Explanation:** Slow performance while deploying a virtual machine template can be annoying. To address this problem, you can increase network throughput by adding uplinks to the vSwitch. You can also change the destination datastore for the virtual machine template. Similarly, you can configure provisioning traffic vmkernel port to do the deployment operation.

#### NEW QUESTION 301

A vSphere Web Client task fails while creating a VMFS datastore on a disk with these characteristics:

? The disk was formatted with an Master Boot Record (MBR) partition table

? The disk was not erased

? The disk is visible in the vSphere Web Client

What action needs to be performed to resolve the issue?

- A. Delete the partitions manually with partedUtil.
- B. Create a VMFS3 file system first, then upgrade it.
- C. Create a VMFS5 file system with the command `esxcli storage filesystem add`.
- D. Delete the data with the `vmkfstools` command.

**Answer:** A

**Explanation:** You can use the partedUtil command line utility to directly manipulate partition tables for local and remote SAN disks on ESXi and ESX. The partedUtil command line only is supported for disk partitioning from ESXi 5.x. The command line utility fdisk does not work with LUNs formatted with VMFS5. Reference: [http://kb.vmware.com/selfservice/microsites/search.do?language=en\\_US&cmd=displayKC&externalId=1036609](http://kb.vmware.com/selfservice/microsites/search.do?language=en_US&cmd=displayKC&externalId=1036609)

#### NEW QUESTION 303

An administrator notices that 8 out of 10 virtual machines have memory ballooning and swapping. However, virtual machine 9 is not ballooning or swapping and virtual machine 10 is not ballooning but is swapping.

Which two statements explain the behavior of virtual machine 9 and virtual machine 10? (Choose two.)

- A. Virtual machine 9 has a 100% memory reservation.
- B. Virtual machine 10 has a memory limit configured.
- C. Virtual machine 9 has memory shares set to HIGH.
- D. Virtual machine 10 does not have Vmware Tools enabled or installed.

**Answer:** AD

**Explanation:** It seems that VM 9 has 100% memory reservation and VM 10 has a memory limit configured.

#### NEW QUESTION 305

An administrator is unable to start the vCenter Server service. The vpxd.log file shows this service failure:

[13308 error 'Default' opID=622892-371bf717] CoreDump: Unable to write minidump [13308 error 'Default' opID=622892-371bf717] error -2147024784 : There is not enough space on the disk.

What is preventing the start of the service?

- A. Insufficient space on the vCenter Server
- B. Insufficient space on the Database Server
- C. Insufficient space on the VMFS volume
- D. Insufficient space on the ESXi ramdisk

**Answer:** A

**Explanation:** The error states that the service is unable to write mini dump and there is not enough space on the disk, which means that there is an insufficient space on the vCenter Server.

#### NEW QUESTION 306

An administrator is upgrading an ESXi 5.5 host to ESXi 6.x and gets the following error: MEMORY\_SIZE

What does this indicate?

- A. Insufficient memory on the ESXi host to complete the upgrade.
- B. Insufficient memory for Auto Deploy to complete the upgrade.
- C. Insufficient memory in vCenter Server to complete the upgrade.
- D. Insufficient memory for Update Manager to complete the upgrade.

**Answer:** A

**Explanation:** When you install less than 4GB of memory, Memory\_Size error occurs because ESXi host requires at least 4 GB of memory.

#### NEW QUESTION 311

What is the name of the command line utility that checks for VMFS5 metadata corruption?

- A. vmkfstools --check
- B. voma
- C. vmfsanalyzer
- D. esxcli vmfs check

**Answer:** B

**Explanation:** It is possible to check VMFS for metadata inconsistency with a tool called VOMA (Vmware Ondisk Metadata Analyser). With VOMA you can check VMFS3 and VMFS5 datastores.

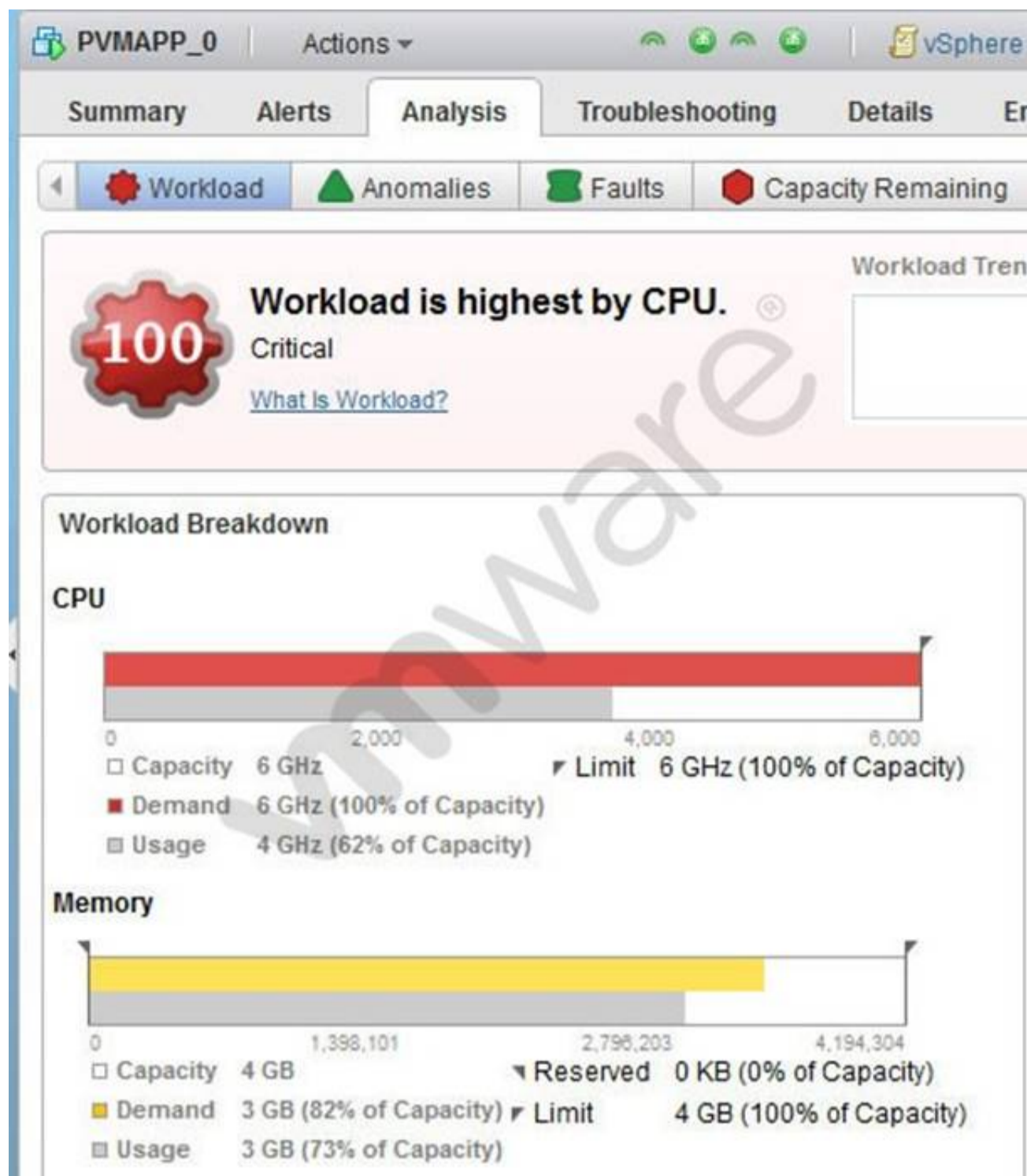
Please note, that the tool can only identify problems, as it runs in a read-only mode. So it does not help you to fix detected errors.

Reference: <http://www.running-system.com/how-to-check-vmfs-for-metadata-corruption-esxi-5-1-and-later/>

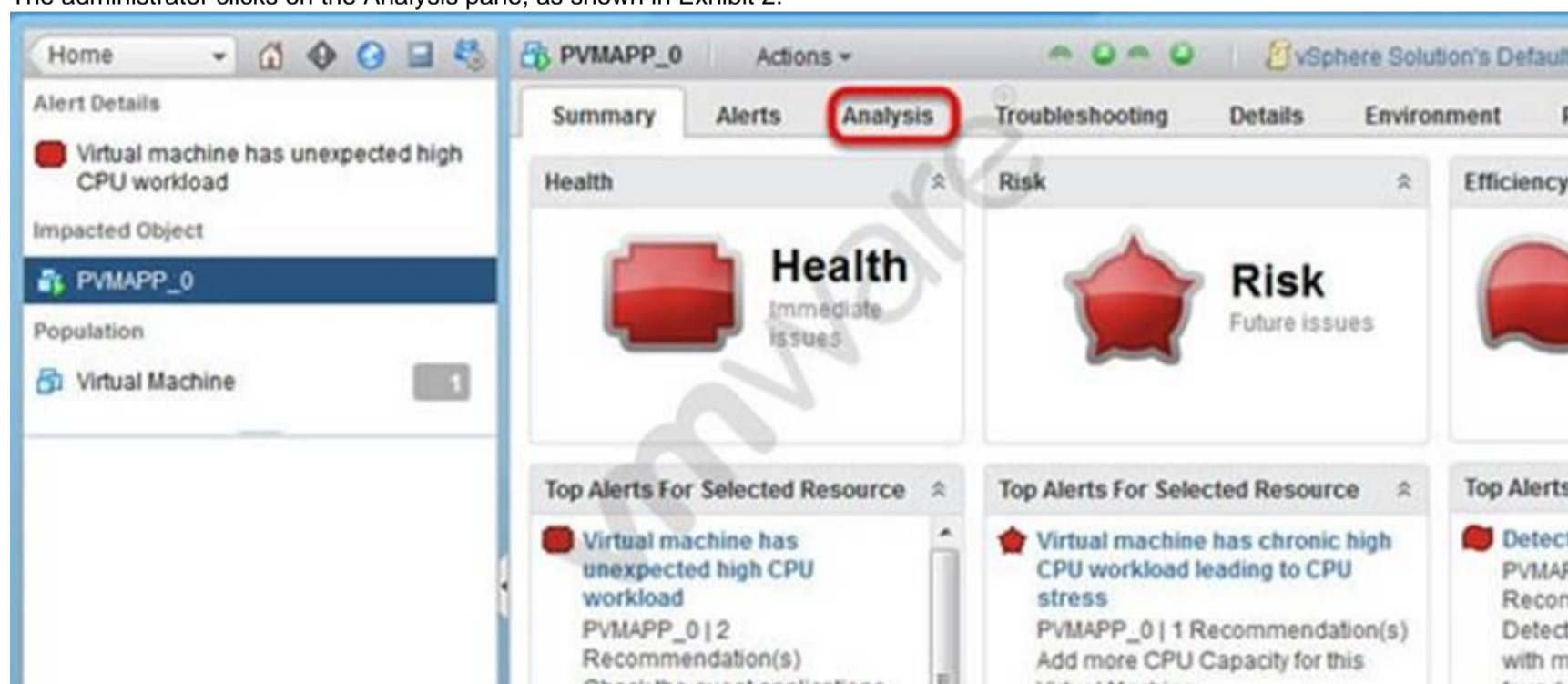
Topic 8, Deploy and Consolidate vSphere Data Center

#### NEW QUESTION 315

Refer to the Exhibit.



An administrator receives vRealize Operations alerts for the Health of the virtual machine PVMAPP\_0 as shown in Exhibit 1:  
The administrator clicks on the Analysis pane, as shown in Exhibit 2:



Based on the exhibits, what action would correctly address the performance problems observed?

- A. Increase the number of vCPUs for PVMAPP\_0.
- B. Increase the allocation of memory for PVMAPP\_0.
- C. Increase the Memory limit for PVMAPP\_0.
- D. Increase the reservation in MHz for vCPUs for PVMAPP\_0.

**Answer:** A

**Explanation:** The CPU workload is high so the logical step is to increase the number of vCPUs for PVMAPP\_0.

#### NEW QUESTION 320

An administrator is upgrading an ESXi host from 5.5 to 6.0 and runs the following command:  
esxcli software vib list --rebooting-image What does this command show?

- A. VIBs active after a reboot.
- B. VIBs that require a reboot.
- C. VIBs that are in the boot image.
- D. VIBs that are third-party.

**Answer:** A

**Explanation:** The command shows that the VIBs are active after a reboot.

#### NEW QUESTION 323

An administrator is deploying ESXi 6.x hosts using Auto Deploy and wants the image profile to be available, even after closing and opening a new PowerCLI window.

Which command can be used to ensure that image profiles are preserved across PowerCLI sessions?

- A. Set-EsxImageProfile
- B. Export-EsxImageProfile
- C. Save-EsxImageProfile
- D. Preserve-EsxImageProfile

**Answer:** B

**Explanation:** Reference: <https://pubs.vmware.com/vsphere-60/index.jsp?topic=%2Fcom.vmware.powercli.cmdletref.doc%2FExport-EsxImageProfile.html>

Topic 9, Configure and Administer vSphere Availability Solutions

#### NEW QUESTION 324

An administrator wants to configure a High Availability cluster to allow virtual machines a 10 minute window to shut down in the event of a Host Isolation incident. What two configuration settings would satisfy this requirement? (Choose two.)

- A. Set the advanced option das.isolationshutdowntimeout = 10.
- B. Set the advanced option das.isolationshutdowntimeout = 600.
- C. Configure Host Isolation Response to Shut Down and Restart VMs.
- D. Configure Host Isolation Response to Power Off and Restart VMs.

**Answer:** BC

**Explanation:** Reference: [http://kb.vmware.com/selfservice/microsites/search.do?language=en\\_US&cmd=displayKC&externalId=2033250](http://kb.vmware.com/selfservice/microsites/search.do?language=en_US&cmd=displayKC&externalId=2033250)

#### NEW QUESTION 326

Which two features are available for virtual machines configured with DirectPath I/O? (Choose two.)

- A. Fault Tolerance
- B. Suspend and Resume
- C. Virtual Symmetric Multi-Processing (vSMP)
- D. Virtual Non-Uniform Memory Access (vNUMA)

**Answer:** CD

**Explanation:** VMs configured with DirectPath I/O have vSMP and vNUMA.

#### NEW QUESTION 331

Which two settings are required for Virtual Machine Component Protection (VMCP) to protect from All Paths Down (APD) and Permanent Device Loss (PDL)? (Choose two.)

- A. Host Monitoring
- B. VM Restart Priority
- C. Virtual machine Monitoring
- D. Response for Host Isolation

**Answer:** AB

**Explanation:** VM Component Protection (VMCP) is enabled, vSphere HA can detect datastore accessibility failures and provide automated recovery for affected virtual machines. If either the Host Monitoring or VM Restart Priority settings are disabled, VMCP cannot perform virtual machine restarts. Storage health can still be monitored and events can be issued, however.

Reference: <http://pubs.vmware.com/vsphere-60/index.jsp?topic=%2Fcom.vmware.vsphere.avail.doc%2FGUID-F01F7EB8-FF9D-45E2-A093-5F56A788D027.html>

#### NEW QUESTION 336

An administrator enables High Availability (HA) on a Virtual SAN cluster.

There are four vmkernel port groups with the following IP addresses assigned:

- ? Management: 192.168.12.10
- ? vMotion: 192.168.13.10
- ? Virtual SAN: 192.168.14.10
- ? Fault Tolerance: 192.168.15.10

Which IP address will HA use for traffic?

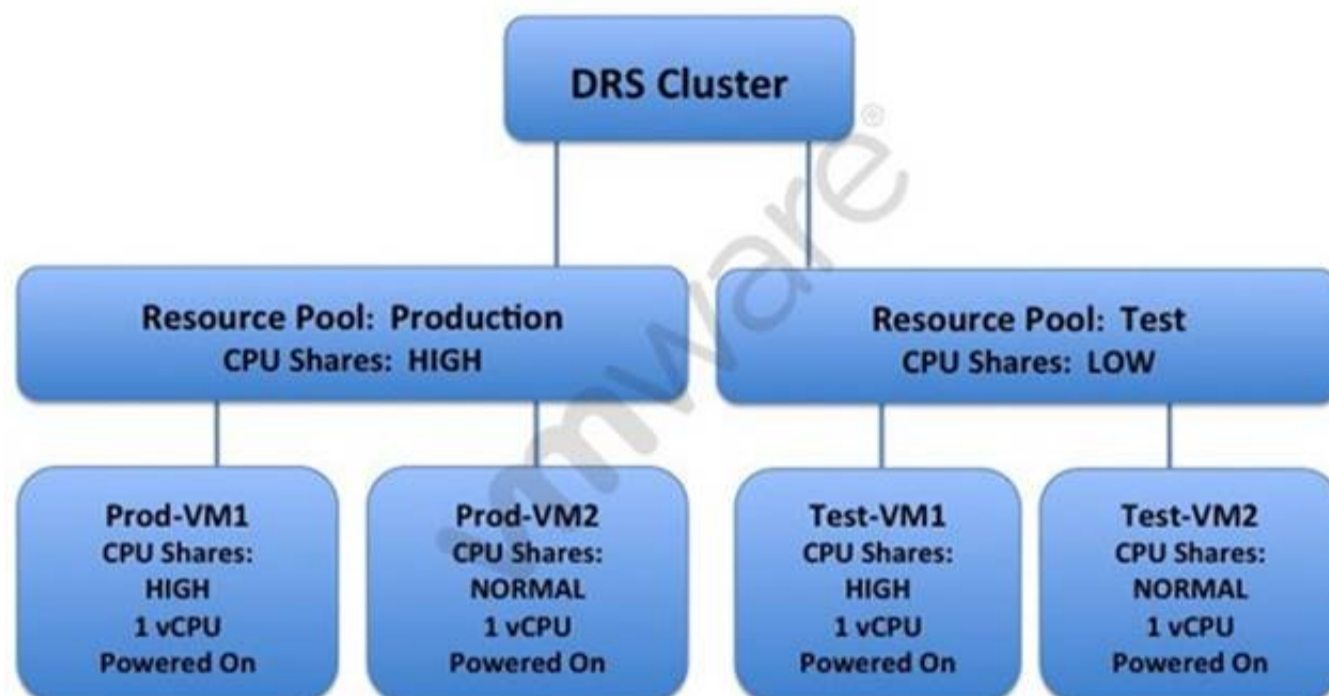
- A. 192.168.12.10
- B. 192.168.13.10
- C. 192.168.14.10
- D. 192.168.15.10

**Answer:** C

**Explanation:** Since the IP address of Virtual SAN is 192.168.14.10, HA will use this for traffic because HA uses the original IP of the entity that needs High availability.

#### NEW QUESTION 341

Refer to the Exhibit.



An administrator has created the DRS cluster shown in the Exhibit. Based on the exhibit, which statement is true?

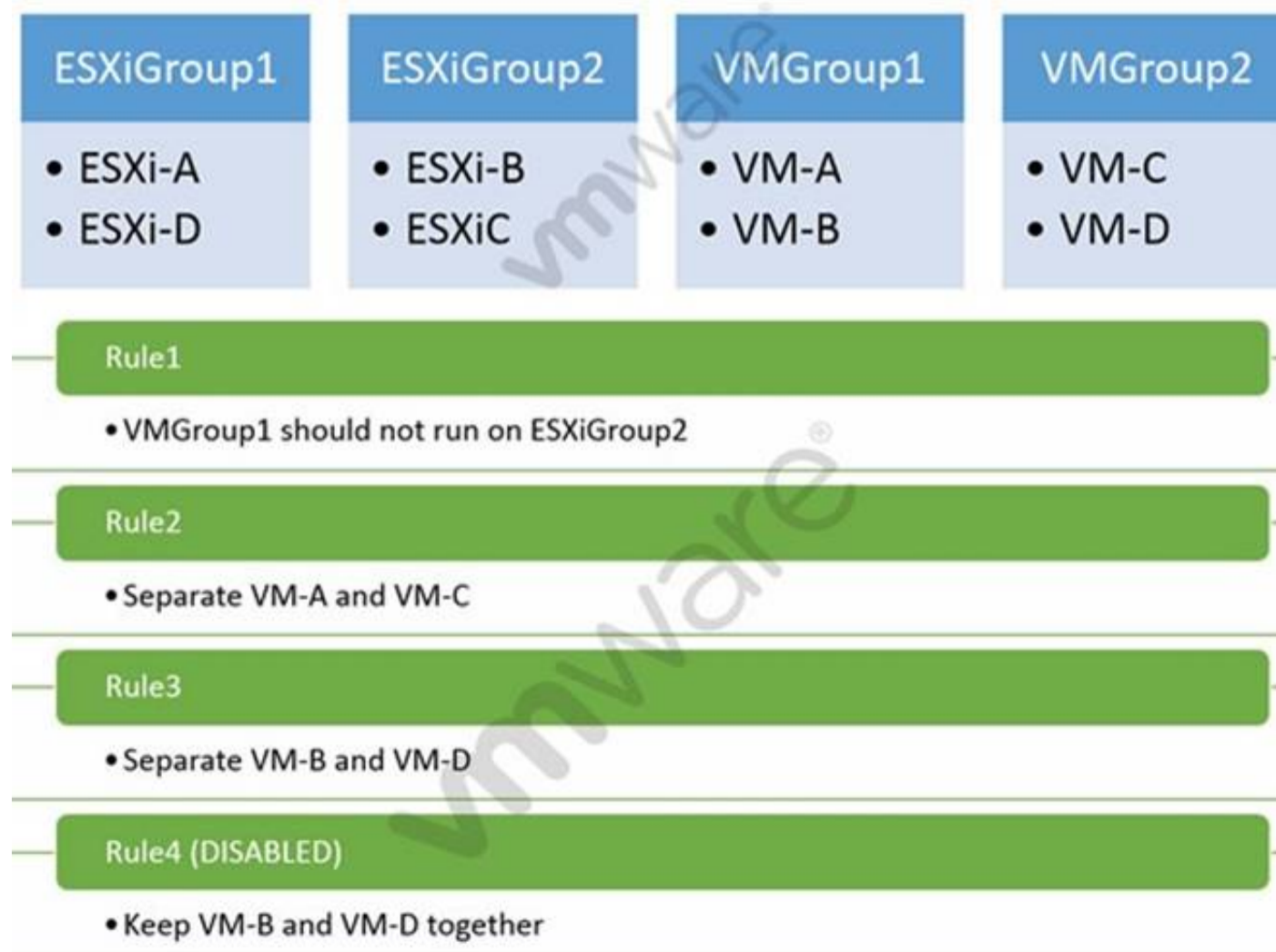
- A. Under CPU contention, Prod-VM1 receives four times the CPU resources than Test- VM1.
- B. The Prod-VM1 will always have more CPU resources than all other virtual machines.
- C. The Test-VM2 will always have less CPU resources than all other virtual machines.
- D. Under CPU contention, Test-VM1 will receive 25% of the total CPU resources.

**Answer:** A

**Explanation:** Prod-VM1 will receive four times the CPU resources the Test-VM1 because the CPU contention is high compared to the test resource pool.

#### NEW QUESTION 346

Refer to the Exhibit.



An administrator has configured Distributed Resource Scheduler (DRS) groups and Affinity Rules as shown in the Exhibit. Based on the exhibit, which two statements are true? (Choose two.)

- A. If ESXi-A and ESXi-D failed, VM-A and VM-B would not failover.
- B. A new conflicting affinity rule will be disabled by default.
- C. VM-B and VM-D can run on the same hosts.
- D. The administrator must disable Rule3 in order to enable Rule4.

**Answer:** BD

**Explanation:** If VM-VM affinity rules conflict with each other, the newer of the conflicting rules will be disabled  
Reference: <http://virtualis.info/2014/07/20/vmware-vsphere-5-5-vsphere-5-5-minimums-maximums-numbers/>

#### NEW QUESTION 348

In a vSphere High Availability cluster, what is the VM Monitoring I/O stats interval default value?

- A. 60 seconds
- B. 90 seconds
- C. 120 seconds
- D. 180 seconds

**Answer:** C

**Explanation:** Occasionally, virtual machines or applications that are still functioning properly stop sending heartbeats. To avoid unnecessary resets, the VM Monitoring service also monitors a virtual machine's I/O activity. If no heartbeats are received within the failure interval, the I/O stats interval (a cluster-level attribute) is checked. The I/O stats interval determines if any disk or network activity has occurred for the virtual machine during the previous two minutes (120 seconds). If not, the virtual machine is reset. This default value (120 seconds) can be changed using the advanced attribute das.iostatsinterval.  
Reference: [https://pubs.vmware.com/vsphere-50/index.jsp?topic=%2Fcom.vmware.vsphere.avail.doc\\_50%2FGUID-62B80D7A-C764-40CB-AE59-752DA6AD78E7.html](https://pubs.vmware.com/vsphere-50/index.jsp?topic=%2Fcom.vmware.vsphere.avail.doc_50%2FGUID-62B80D7A-C764-40CB-AE59-752DA6AD78E7.html)

#### NEW QUESTION 350

What two IT infrastructure components are virtualized by vSphere Essentials? (Choose two.)

- A. Networks
- B. Applications
- C. Storage
- D. Management

**Answer:** AC

**Explanation:** vSphere Essentials virtualizes networks and storage specifically.

#### NEW QUESTION 351

An administrator tries to capture network traffic for a virtual machine, but cannot see the expected traffic in the packet capture tool. Which step can resolve the problem?

- A. Migrate the virtual machine to a Distributed Virtual Switch.
- B. Enable Promiscuous Mode on the relevant port group.
- C. Modify the default value of MAC Address changes.
- D. Enable Forged Transmits on the virtual machine.

**Answer:** B

**Explanation:** Although it is not a good practice to enable promiscuous mode on a distributed virtual switch, you can enable it to solve the problem of traffic stats in packet capture tool.

#### NEW QUESTION 355

A vSphere 6 High Availability cluster has been configured with default settings. Four virtual machines in the cluster have been configured with these priorities:

- ? Prod-DB. High
- ? Prod-Email: High
- ? Prod-VC. Medium
- ? Dev-VDI: Low

How many VM Overrides would need to be defined at the cluster level to meet the restart priorities?

- A. 1
- B. 2
- C. 3
- D. 4

**Answer:** B

**Explanation:** 2 overrides should be defined at the cluster level to meet restart priorities. VMs are restarted based on the setting defined at the cluster level defined in the window.

#### NEW QUESTION 356

An administrator is planning a vSphere infrastructure with the following specific networking requirements:

- The ability to shape inbound (RX) traffic
- Support for Private VLANs (PVLANS)
- Support for LLDP (Link Layer Discovery Protocol)

What is the minimum vSphere Edition that will support these requirements?

- A. vSphere Essentials Plus
- B. vSphere Standard
- C. vSphere Enterprise
- D. vSphere Enterprise Plus

**Answer: D**

**Explanation:** Reference: [http://kb.vmware.com/selfservice/microsites/search.do?language=en\\_US&cmd=displayKC&externalId=1010555](http://kb.vmware.com/selfservice/microsites/search.do?language=en_US&cmd=displayKC&externalId=1010555)

#### NEW QUESTION 360

An administrator wants to set a non-default isolation address of 192.168.1.2 for High Availability.

Which advanced setting would accomplish this task?

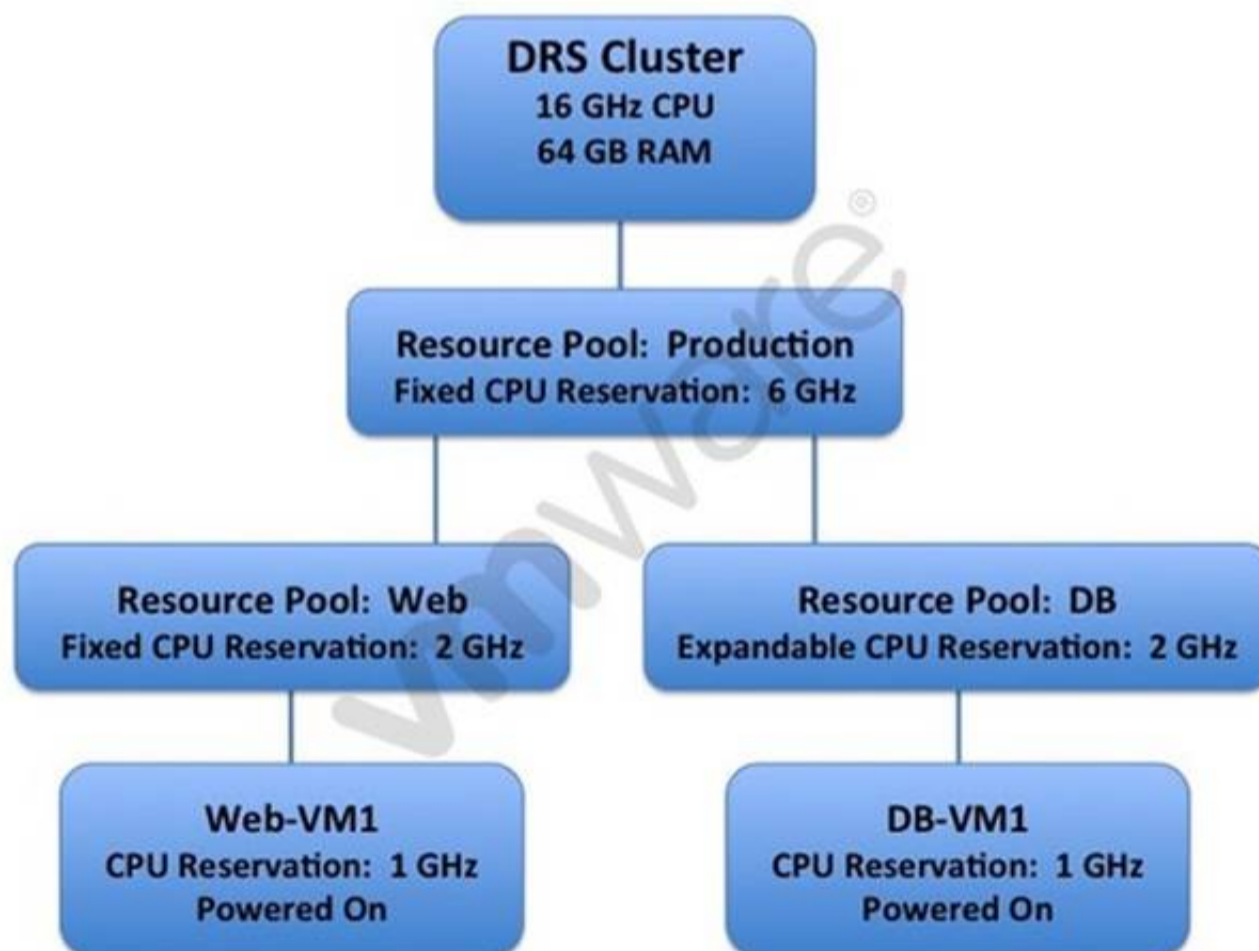
- A. Das.isolationaddress0=192.168.1.2
- B. Das.useisolationaddress0=192.168.1.2
- C. Das.defaultisolationaddress0=192.168.1.2
- D. Das.haisolationaddress0=192.168.1.2

**Answer: A**

**Explanation:** Multiple isolation response addresses can be specified using the das.isolationaddress0 through das.isolationaddress0 options.  
Reference: [http://kb.vmware.com/selfservice/microsites/search.do?language=en\\_US&cmd=displayKC&externalId=1002117](http://kb.vmware.com/selfservice/microsites/search.do?language=en_US&cmd=displayKC&externalId=1002117)

#### NEW QUESTION 361

Refer to the Exhibit.



A vSphere 6.x DRS cluster is configured as shown in the Exhibit. Based on the exhibit, which statement is true?

- A. A virtual machine can be powered on in the Web Resource Pool with a 3 GHz CPU Reservation.
- B. A virtual machine can be powered on in the Web Resource Pool with a 4 GHz CPU Reservation.
- C. A virtual machine can be powered on in the DB Resource Pool with a 3 GHz CPU Reservation.
- D. A virtual machine can be powered on in the DB Resource Pool with a 4 GHz CPU Reservation.

**Answer: C**

#### NEW QUESTION 364

Which two statements regarding Distributed Resource Scheduler (DRS) affinity rules are true? (Choose two.)

- A. When two VM-VM affinity rules conflict, the older one takes precedence and the newer rule is disabled.
- B. Using Specify Failover Hosts admission control policy, VM-VM affinity rules are not supported.
- C. DRS gives higher precedence to preventing violations of anti-affinity rules than violations of affinity rules.

D. It is not possible to create an affinity rule that conflicts with the other rules being used.

**Answer:** AC

**Explanation:** When you create a VM-Host affinity rule, its ability to function in relation to other rules is not checked. So, it is possible for you to create a rule that conflicts with the other rules you are using. When two VM-Host affinity rules conflict, the older one takes precedence and the newer rule is disabled. DRS only tries to satisfy enabled rules and disabled rules are ignored.

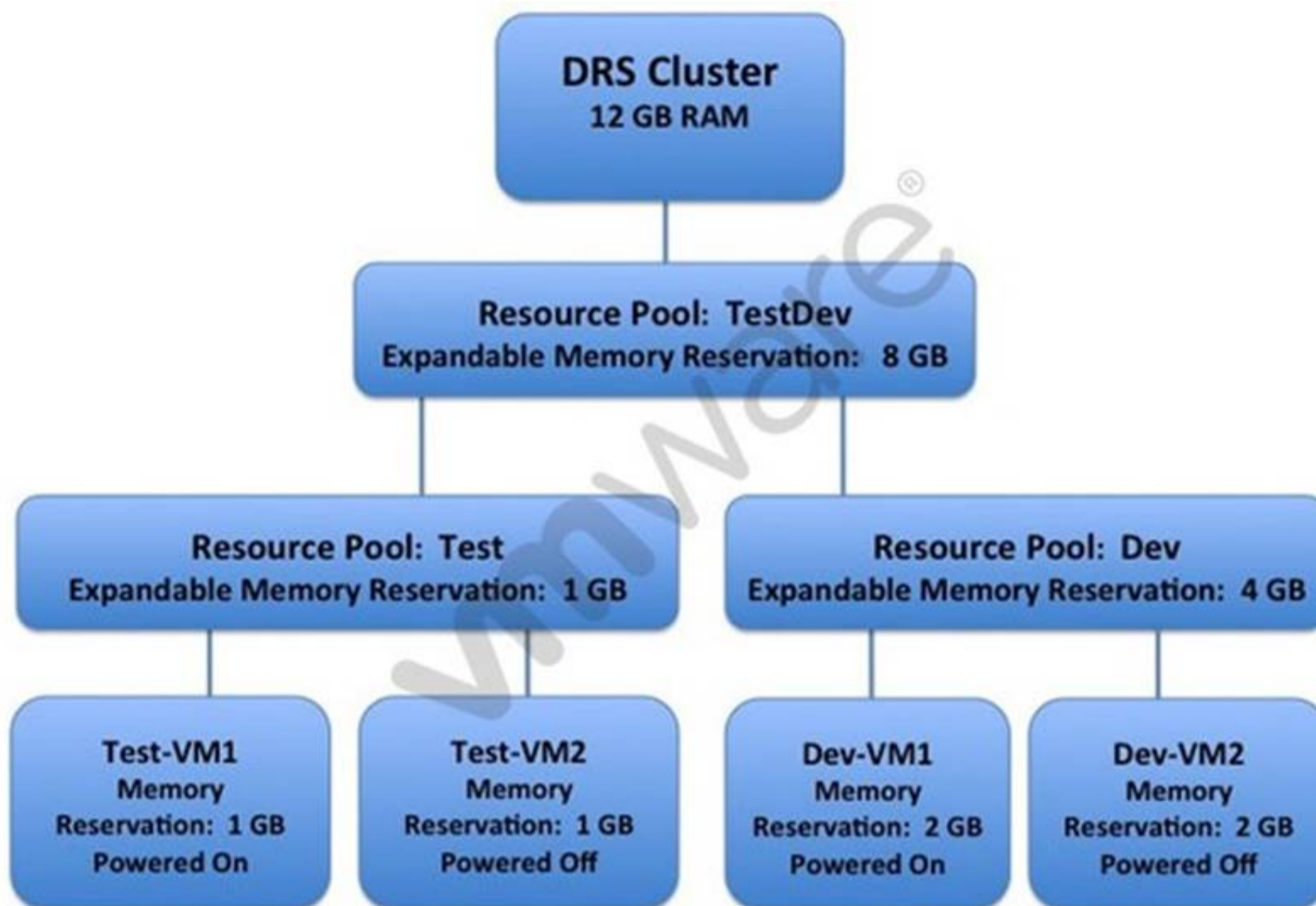
DRS, vSphere HA, and vSphere DPM never take any action that results in the violation of required affinity rules (those where the virtual machine DRS group 'must run on' or 'must not run on' the host DRS group). Accordingly, you should exercise caution when using this type of rule because of its potential to adversely affect the functioning of the cluster. If improperly used, required VM-Host affinity rules can fragment the cluster and inhibit the proper functioning of DRS, vSphere HA, and vSphere DPM.

Reference:

<https://pubs.vmware.com/vsphere-55/index.jsp?topic=%2Fcom.vmware.vsphere.resmgmt.doc%2FGUID-793013E2-0976-43B7-9A00-340FA76859D0.html>

#### NEW QUESTION 367

Refer to the Exhibit.



An administrator has configured a vSphere 6.x DRS cluster as shown in the Exhibit. Based on the exhibit, which statement is true?

- A. A virtual machine can be powered on in the Test Resource Pool with a 6 GB Memory Reservation.
- B. A virtual machine can be powered on in the Dev Resource Pool with a 8 GB Memory Reservation.
- C. A virtual machine from both the Test Resource Pool and the Dev Resource Pool can be powered on with a 4 GB Memory Reservation.
- D. No more virtual machines can be powered on due to insufficient resources.

**Answer:** A

**Explanation:** Using 6 GB reservation, a VM can be powered on in the test resource pool. IT has an expandable memory reservation that can help starta VM in the resource pool.

#### NEW QUESTION 372

An administrator wants to reduce the memory overhead for a 3D graphics enabled virtual machine (VM). What advanced feature can be added to the VM configuration file to reduce memory overhead?

- A. vga.vgaOnly=TRUE
- B. vga.svgaEnable=FALSE
- C. svgaEnabled=FALSE
- D. svgaDisable=TRUE

**Answer:** A

**Explanation:** Reference: [http://pubs.vmware.com/vsphere-60/index.jsp?topic=%2Fcom.vmware.vsphere.vm\\_admin.doc%2FGUID-FAB0E2C3-3474-461D-99BC-549F7E21FE85.html](http://pubs.vmware.com/vsphere-60/index.jsp?topic=%2Fcom.vmware.vsphere.vm_admin.doc%2FGUID-FAB0E2C3-3474-461D-99BC-549F7E21FE85.html)

#### NEW QUESTION 374

An administrator is performing a silent automatic update of VMware Tools on a Windows virtual machine. What syntax needs to be entered into the Advanced Options box?

- A. /s /v "/qn" /l "c:\Windows\filename.log"
- B. --prefix=/usr/local,/usr/lib,/usr/doc --silent
- C. --prefix=c:\Windows,c:\VMtools --silent
- D. /fs /v "/qn+" /l "c:\Windows\filename.log"

**Answer:** A

**Explanation:** One way to determine the component values to use is to run the interactive VMware Tools installer with full logging turned on, select the components that you want installed, and then search the log files for the ADDLOCAL and REMOVE properties. The log files show the names used by the program.

Reference: [http://pubs.vmware.com/vsphere-50/advanced/print.jsp?topic=/com.vmware.vsphere.additional\\_resources.doc\\_50/GUID-3D2186A2-6EC7-470E-8D1E-CA226EDBBB0.html](http://pubs.vmware.com/vsphere-50/advanced/print.jsp?topic=/com.vmware.vsphere.additional_resources.doc_50/GUID-3D2186A2-6EC7-470E-8D1E-CA226EDBBB0.html)

#### NEW QUESTION 376

An administrator observes the following symptoms for a virtual machine:

- ? CPU usage is consistently above 90%
- ? CPU ready value is consistently above 20%.
- ? Application performance is impacted.

Which two actions should the administrator take to improve the performance of this virtual machine? (Choose two.)

- A. Increase the number of vCPUs assigned to this virtual machine.
- B. Decrease the number of vCPUs assigned to this virtual machine.
- C. Verify that VMware Tools is installed on every virtual machine on the host.
- D. Increase the CPU shares assigned to the virtual machine.

**Answer:** CD

**Explanation:** First, verify that the VMware tools are installed on every virtual machine on the host. Secondly, increase CPU shares to share the resource evenly among the processes.

#### NEW QUESTION 381

What will occur if the .nvram file is deleted from a powered off virtual machine?

- A. The .nvram file will get created the next time the virtual machine is powered on.
- B. Restoring the file from backup is needed to allow the virtual machine to power on.
- C. The virtual machine will fail to power on and enter an Orphaned state.
- D. The virtual machine will fail to power on and enter an Inaccessible state.

**Answer:** A

**Explanation:** The .nvram file. This small file contains the BIOS that is used when the VM boots. It is similar to a physical server that has a BIOS chip that lets you set hardware configuration options. A VM also has a virtual BIOS that is contained in the NVRAM file. The BIOS can be accessed when a VM first starts up by pressing the F2 key. Whatever changes are made to the hardware configuration of the VM are then saved in the NVRAM file. This file is in binary format and if deleted it will be automatically re-created when a VM is powered on.

Reference: <http://searchvmware.techtarget.com/tip/Understanding-the-files-that-make-up-a-VMware-virtual-machine>

#### NEW QUESTION 384

Which three ports are used by the vSphere Web Client when connecting directly to an ESXi 6.x host? (Choose three.)

- A. 443 TCP
- B. 902 TCP and UDP
- C. 903 TCP
- D. 5480 TCP
- E. 9443 TCP and UDP

**Answer:** ABC

**Explanation:** Reference: [http://kb.vmware.com/selfservice/microsites/search.do?language=en\\_US&cmd=displayKC&externalId=1021199](http://kb.vmware.com/selfservice/microsites/search.do?language=en_US&cmd=displayKC&externalId=1021199)

#### NEW QUESTION 385

An administrator tries to connect the vSphere 5.5 Client to an ESXi 6.x host. What will happen when this takes place?

- A. The operation will fail, since the vSphere Client is deprecated in vSphere 6.x.
- B. The operation will fail and the administrator will need to delete the client and install the 6.x version.
- C. The operation will prompt the administrator to run a script to upgrade the vSphere Client.
- D. The operation will update the vSphere Client silently in the background, then connect.

**Answer:** C

**Explanation:** The operation will fail because vSphere client 5.5 is deprecated in vSphere 6.x. You simply cannot connect a 5.5 vSphere client to a 6.x host because they are not compatible.

**NEW QUESTION 389**

An administrator needs to migrate a legacy physical application server to a virtual machine within a vSphere 6 cluster. As part of the conversion, the administrator must reduce the size of the virtual disks.

What action should the administrator take to create a virtual machine with smaller virtual disks than the original physical server?

- A. Shut down the physical server and use VMware Converter cold cloning with volume- based cloning at the disk level.
- B. Use VMware Converter hot cloning with volume-based cloning at the block level.
- C. Shut down the physical server and use VMware Converter cold cloning with volume- based cloning at the file level.
- D. Use VMware Converter hot cloning with volume-based cloning at the file level.

**Answer:** D

**Explanation:** Use VMware converter hot cloning with volume-based cloning at the file level to create a virtual machine with smaller virtual disks.

**NEW QUESTION 391**

An administrator wants to allow users to login to the vSphere Web Client using the Use Windows session authentication check box for faster authentication. Which three requirements must be met for this feature to be available and functional? (Choose three.)

- A. Install the vSphere Web Client Integration browser plug-in on the vCenter Server and Platform Services Controller machines.
- B. Install the vSphere Web Client Integration browser plug-in on each workstation from where a user will sign in.
- C. The users must be signed into Windows using Active Directory user accounts.
- D. The administrator must create a valid Identity Source in Single Sign-On for the users domain.
- E. The administrator must create a valid Single Sign-On Identity Source using Integrated Windows Authentication.

**Answer:** BCD

**Explanation:** To enable windows session authentication, install the vSphere Web Client Integration browser plug-in on each workstation from where a user will sign in. The users must be signed into Windows using Active Directory user accounts. The administrator must create a valid Identity Source in Single Sign-On for the users domain.

**NEW QUESTION 394**

An administrator wants to power on a virtual machine (VM) while connected to an ESXi host using SSH. The VM has the following Name and ID:

? VM Name = SQL001

? VMID = 12345

Which command would successfully power on the virtual machine?

- A. vim-cmd vmsvc/power.on 12345
- B. vim-cmd vmsvc/power.on SQL001
- C. vmware-vim-cmd vmsvc/power.on 12345
- D. vmware-vim-cmd vmsvc/power.on SQL001

**Answer:** A

**Explanation:** Reference: <http://pingforinfo.com/cronjob-poweron-vm/>

Topic 11, Mixed Questions

**NEW QUESTION 398**

Which two statements are true regarding upgrading ESXi 6.x hosts using a USB flash drive? (Choose two.)

- A. The ks.cfg file must be available to the ESXi 6.x host during bootup on a TFTP server.
- B. The USB flash drive must be formatted using Fat32.
- C. A partition table must be manually created on the USB flash device.
- D. The USB flash drive must be mounted from a Windows device with sysconfig installed.

**Answer:** BC

**NEW QUESTION 403**

An administrator is building a large virtual machine that will require as many vCPUs as the host can support. An ESXi 6.x host has these specifications:

- Four 24-core Intel Xeon Processors
- 256 GB of Memory
- 512 GB Local disk space using VMFS5

What is the maximum number of virtual CPUs that the virtual machine can be allocated?

- A. 64
- B. 96
- C. 128
- D. 192

**Answer:** B

**NEW QUESTION 404**

An administrator is configuring an identity source for Single Sign-On. The administrator will use the machine that Single Sign-On is running on, but does not want all users on the machine to be visible to SSO.  
Which Identity Source meets this requirement?

- A. Active Directory (Integrated Windows Authentication)
- B. Active Directory as an LDAP Service
- C. OpenLDAP
- D. LocalOS

**Answer:** A

#### NEW QUESTION 405

An administrator is configuring Storage I/O Control. After enabling, the administrator notices high device latency and poor storage performance.  
Which two actions would likely reduce latency and improve functionality? (Choose two.)

- A. Set the congestion threshold to 15ms
- B. Set the congestion threshold value to 5ms
- C. Ensure that each datastore has independent spindles
- D. Ensure that each datastore uses shared spindles

**Answer:** AC

#### NEW QUESTION 410

An administrator needs to configure a storage solution for a vSphere 6.x implementation with these characteristics:

- Snapshot support
- vMotion Capability
- Clustering across multiple ESXi hosts
- Database application with high transaction count
- vFlash Read Cache

Which solution meets all of the stated requirements?

- A. A vmrk located on a Shared VMFS datastore
- B. A Physical Mode Raw Device Mapped LUN
- C. A Virtual Mode Raw Device Mapped LUN
- D. A Virtual SAN-based vmrk

**Answer:** C

#### NEW QUESTION 411

Which two conditions would prevent an administrator from upgrading an existing vCenter Appliance to vSphere 6.x? (Choose two.)

- A. The appliance has been configured to use an external Single Sign-On server.
- B. The administrator did not export the appliance configuration.
- C. The administrator is using an appliance with an embedded Platform Services Controller.
- D. The ESXi Host that the appliance will run on has not been placed into Maintenance Mode.

**Answer:** AB

#### NEW QUESTION 415

Which two statements are true regarding upgrading from a Distributed vCenter Server 5.x to vCenter Server 6.x? (Choose two.)

- A. vCenter Single Sign-on becomes part of the Platform Services Controller.
- B. vCenter Inventory Service becomes part of the Platform Services Controller.
- C. The vCenter Server service is not migrated during the upgrade process.
- D. The vSphere License Service is migrated to the new vCenter Server 6.x instance.

**Answer:** AC

#### NEW QUESTION 420

An administrator has a virtual machine (VM) that uses a shared USB device.

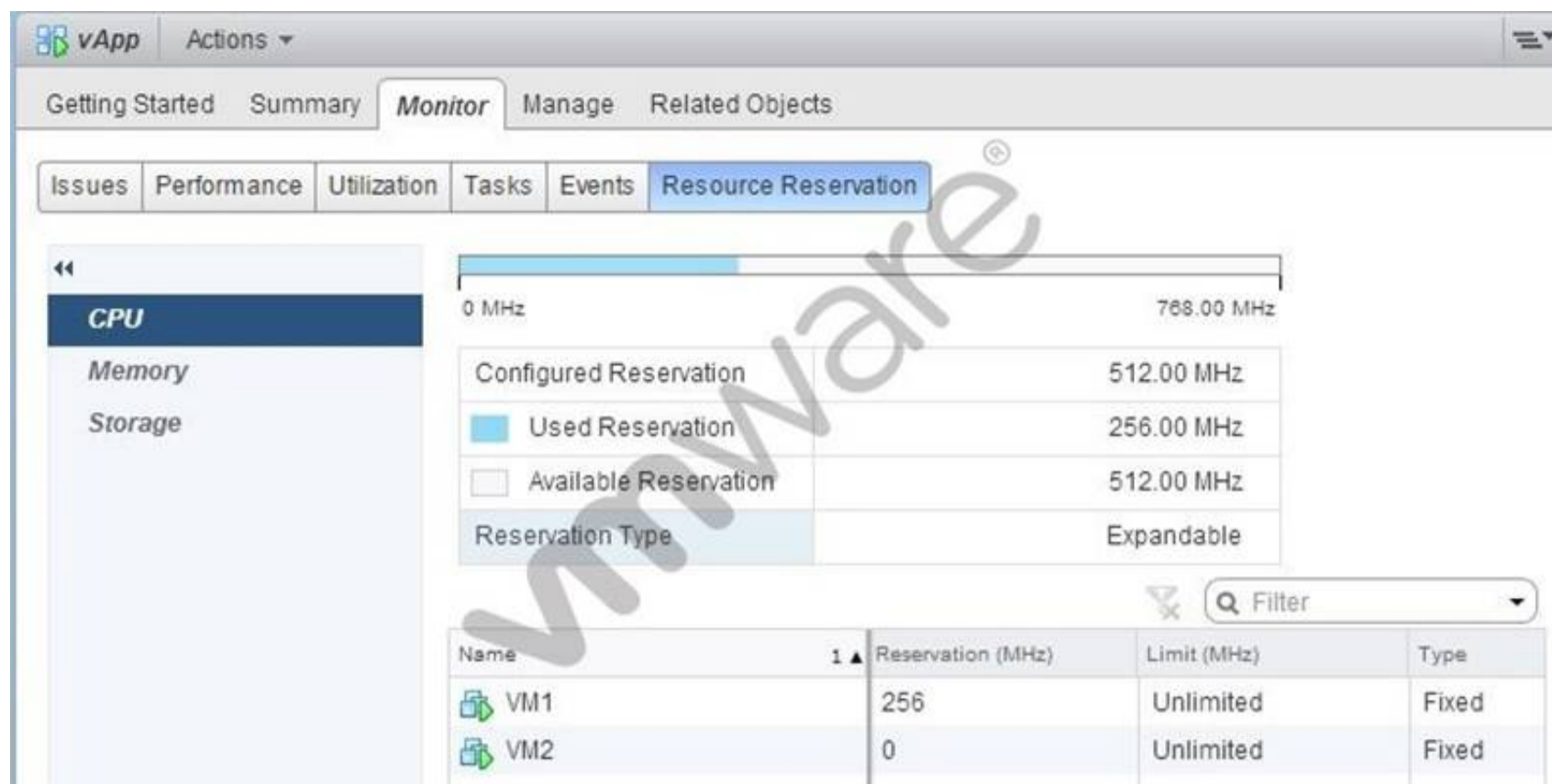
Which option will allow the VM to utilize vMotion while retaining the maximum possible functionality?

- A. Disable the USB device from the VM.
- B. Configure the VM to support vMotion while the device is connected.
- C. Enable migration support for the individual USB device.
- D. Remove the device from the VM.

**Answer:** B

#### NEW QUESTION 425

An administrator has noticed that virtual machine VM2 in the vApp shown in the Exhibit is demonstrating poor performance.



Which three changes, if performed separately, would improve the performance of VM2? (Choose three.)

- A. Remove the CPU limit on the vApp.
- B. Remove the CPU limit on the resource pool.
- C. Increase the CPU reservation on virtual machine VM1.
- D. Power off virtual machine VM1.
- E. Increase the CPU reservation on virtual machine VM2.

**Answer:** ADE

#### NEW QUESTION 427

An administrator is creating a new Content Library. It will subscribe to another remote Content Library without authentication enabled. Optimal performance is desired for the configuration.

What two steps should be taken to set up the library? (Choose two.)

- A. The Subscription URL should be provided.
- B. The library should be published externally.
- C. A file system should be used for this library.
- D. A datastore should be used for this library.

**Answer:** AD

#### NEW QUESTION 431

When operating with Distributed Resource Scheduler (DRS) and Distributed Power Management (DPM), what two statements explain the impact of disabling vSphere High Availability admission control? (Choose two.)

- A. VMware DPM does not place hosts in standby mode if doing so would violate failover requirements.
- B. DRS does not evacuate virtual machines from a host for the purpose of placing it in maintenance or standby modes if placing the host in this state would violate failover requirements.
- C. DRS will evacuate virtual machines from hosts and places hosts in maintenance or standby modes regardless of the impact this might have on failover requirements.
- D. VMware DPM will place hosts in standby mode even if doing so violates failover requirements.

**Answer:** CD

#### NEW QUESTION 435

An administrator observes that virtual machine storage activity on an ESXi 6.x host is negatively affecting virtual machine storage activity on another host that is accessing the same VMFS Datastore.

Which action would mitigate the issue?

- A. Enable Storage I/O Control.
- B. Configure Storage DRS.
- C. Enable the Dynamic Queue Depth Throttling option.
- D. Configure the Disk.SchedNumReqOutstanding parameter.

**Answer:** A

#### NEW QUESTION 440

An administrator wants to ensure that all datastores defined on an ALUA-based storage array have load balancing enabled by default. The storage configuration is:

- Storage Array Type = VMW\_SATP\_DEFAULT\_AA
- Path Selection Policy = VMW\_PSP\_FIXED

Which configuration would support the stated requirements?

- A. Change the Storage Array Type Policy to = VMW\_SATP\_ALUA and the Path Selection Policy = VMW\_PSP\_RR.

- B. Change the Path Selection Policy = VMW\_PSP\_RR and leave the Storage Array Type Policy as is.  
C. Change the Storage Array Type Policy to = VMW\_SATP\_ALUA and leave the Path Selection Policy as is.  
D. Change the Path Selection Policy = NMP and leave the Storage Array Type Policy as is.

**Answer:** A

#### NEW QUESTION 444

An administrator has configured Network I/O Control to support bandwidth allocation to a group of virtual machines running on a vSphere 6.x HA/DRS Cluster. Which two conditions would cause DRS to migrate one of these virtual machines to another host in the cluster? (Choose two.)

- A. The reservation is changed to a value that the initial host can no longer satisfy.  
B. A physical adapter that carries traffic from the virtual machine is offline.  
C. A physical adapter cannot supply the minimum bandwidth in accordance with the teaming policy.  
D. A reservation for a VM network adapter is less than the free quota in the network resource pool.

**Answer:** AB

#### NEW QUESTION 447

An administrator wants to clone the configuration of an existing ESXi 6.x host to a new group of hosts, but does not want to clone storage specific settings. Which action would accomplish this?

- A. Uncheck sub-profile  
B. Remove sub-profile  
C. Revert profile  
D. Disable VM Storage Profile

**Answer:** B

#### NEW QUESTION 452

An administrator has configured a cluster with the Host Failures Cluster Tolerates admission control policy, as shown in the Exhibit:



Based on the exhibit, which two statements are true? (Choose two.)

- A. The number of slots per cluster node is four.  
B. The cluster can sustain loss of only one node.  
C. The number of slots per cluster node is three.  
D. The cluster can sustain the loss of two nodes.

**Answer:** BC

#### NEW QUESTION 454

An administrator is creating a new Platform Service Controller Password Policy with the following requirements:

- Minimum length: Minimum of 8 characters.
- Restrict use: 6
- Character requirements: At least one upper-case letter, one number, and one special character.
- Identical adjacent characters: 0

When trying to assign the password "P@\$\$w0rd", the administrator receives an error that the password does not meet the Password Policy requirements. Which part of the Password Policy does this password violate?

- A. Minimum length  
B. Restrict use  
C. Character requirements  
D. Identical adjacent characters

**Answer:** D

**NEW QUESTION 458**

.....

## Thank You for Trying Our Product

\* 100% Pass or Money Back

All our products come with a 90-day Money Back Guarantee.

\* One year free update

You can enjoy free update one year. 24x7 online support.

\* Trusted by Millions

We currently serve more than 30,000,000 customers.

\* Shop Securely

All transactions are protected by VeriSign!

**100% Pass Your 2V0-621D Exam with Our Prep Materials Via below:**

<https://www.certleader.com/2V0-621D-dumps.html>