

# Cisco

## Exam Questions 350-901

Developing Applications using Cisco Core Platforms & APIs



**NEW QUESTION 1**

A cloud native project is being worked on in which all source code and dependencies are written in Python, Ruby, and/or JavaScript. A change in code triggers a notification to the CI/CD tool to run the CI/CD pipeline.

Which step should be omitted from the pipeline?

- A. Deploy the code to one or more environments, such as staging and/or production.
- B. Build one of more containers that package up code and all its dependencies.
- C. Compile code.
- D. Run automated tests to validate the correctness.

**Answer:** A

**NEW QUESTION 2**

A network operations team is using the cloud to automate some of their managed customer and branch locations. They require that all of their tooling be ephemeral by design and that the entire automation environment can be recreated without manual commands. Automation code and configuration state will be stored in git for change control and versioning. The engineering high-level plan is to use VMs in a cloud-provider environment then configure open source tooling onto these VMs to poll, test, and configure the remote devices, as well as deploy the tooling itself.

Which configuration management and/or automation tooling is needed for this solution?

- A. Ansible
- B. Ansible and Terraform
- C. NSO
- D. Terraform
- E. Ansible and NSO

**Answer:** B

**NEW QUESTION 3**

Which statement about microservices architecture is true?

- A. Applications are written in a single unit.
- B. It is a complex application composed of multiple independent parts.
- C. It is often a challenge to scale individual parts.
- D. A single faulty service can bring the whole application down.

**Answer:** B

**NEW QUESTION 4**

DRAG DROP

Drag and drop the characteristics from the left onto the correct data processing techniques on the right, in the context of GDPR.

Select and Place:

**Answer Area**

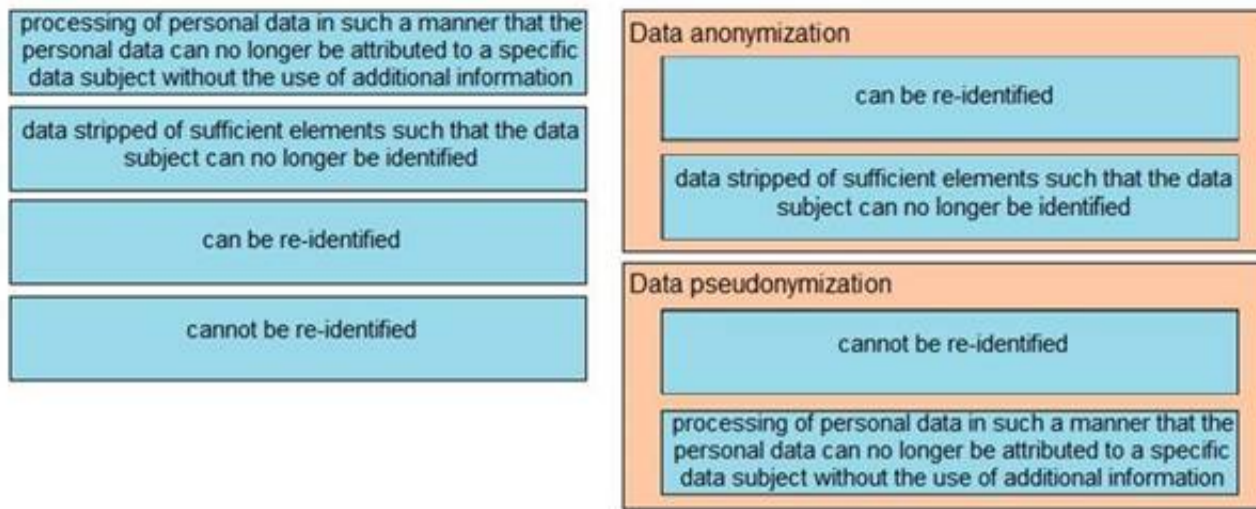
processing of personal data in such a manner that the personal data can no longer be attributed to a specific data subject without the use of additional information	Data anonymization
data stripped of sufficient elements such that the data subject can no longer be identified	
can be re-identified	Data pseudonymization
cannot be re-identified	

- A. Mastered
- B. Not Mastered

**Answer:** A

**Explanation:**

**Answer Area**



**NEW QUESTION 5**

A developer has completed the implementation of a REST API, but when it is executed, it returns a 401 error message. What must be done on the API to resolve the issue?

- A. Access permission to the resource must be granted, before the request.
- B. Configure new valid credentials.
- C. The requested API endpoint does not exist, and the request URL must be changed.
- D. Additional permission must be granted before the request can submitted.

**Answer: D**

**NEW QUESTION 6**

Refer to the exhibit. The cURL POST request creates an OAuth access token for authentication with FDM API requests. What is the purpose of the file "@token\_data" that cURL is handling?

- A. This file is a container to log possible error responses in the request.
- B. This file is given as input to store the access token received from FDM.
- C. This file is used to send authentication related headers.
- D. This file contains raw data that is needed for token authentication.

**Answer: B**

**NEW QUESTION 7**

A user is receiving a 429 Too Many Requests error. Which scheme is the server employing that causes this error?

- A. rate limiting
- B. time outs
- C. caching
- D. redirection

**Answer: A**

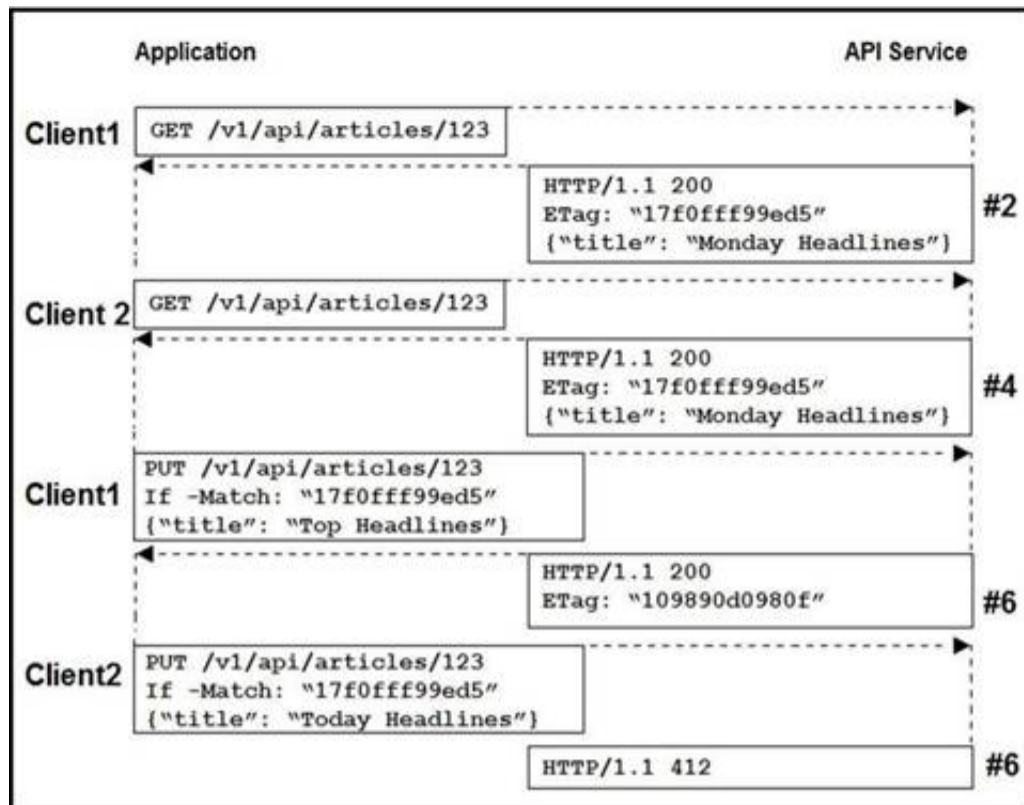
**NEW QUESTION 8**

An Etag header is included in the HTTP response for an API resource. What are two benefits of using the value of the Etag for future interactions involving the same API resource? (Choose two.)

- A. caching and optimization of response payloads
- B. creating conditional requests
- C. categorizing and comparing this API resource with others
- D. checking the integrity of the resource
- E. requesting the list of operations authorized for this resource

**Answer: AB**

**NEW QUESTION 9**



Refer to the exhibit. Two editors are concurrently updating an article's headline from their mobile devices. What results from this scenario based on this REST API sequence?

- A. The article is marked as "Conflicted"
- B. The article headline is "Monday Headlines"
- C. The article headline is "Today Headlines"
- D. The article headline is "Top Headlines"

**Answer: B**

**NEW QUESTION 10**

An application uses OAuth to get access to several API resources on behalf of an end user. What are two valid parameters to send to the authorization server as part of the first step of an authorization code grant flow? (Choose two.)

- A. URI to which the authorization server will send the user-agent back when access is granted or denied
- B. list of the API resources that the application is requesting to access
- C. secret that was generated by the authorization server when the application registered as an OAuth integration
- D. list of scopes that correspond to the API resources to which the application is requesting to access
- E. name of the application under which the application registered as an OAuth integration

**Answer: AC**

**NEW QUESTION 10**

```
import http.client

conn = http.client.HTTPSConnection("dnac.cisco.com")

headers = {
    '_runsync': "true",
    '_timeout': "30",
    '_persistbapioutput': "true",
}

conn.request("□", "/dna/intent/api/v1/□?timestamp=10000", headers=headers)

res = conn.getresponse()
data = res.read()

print(data.decode("utf-8"))
```

Refer to the exhibit. Which configuration of method and parameter retrieves the health of a laptop connected to the network from Cisco DNA Center?

- A. PUT; network-health;
- B. GET; client-health;
- C. GET; network-device;
- D. POST; network-device;

**Answer: C**

**NEW QUESTION 11**

```
headers = ( _____ )
try:
    response = requests.get("https://sandboxdnac.cisco.com/dna/intent/api/v1/wireless/profile",
        headers=headers, verify=False)
except requests.exceptions.RequestException as cerror:
    print("Error processing request", cerror)
    sys.exit(1)
```

Refer to the exhibit. Which code snippet is required in the headers to successfully authorize wireless information from Cisco DNA Center?

- A. headers = {'X-auth-token':'fa8426a0-8eaf-4d22-8e13-7c1b16a9370c'}
- B. headers = {'Authorization':'Basic YWRtaW46R3JhcGV2aW5IMQ==}'
- C. headers = {'Content-type':'application/json'}

**Answer: A**

**NEW QUESTION 15**

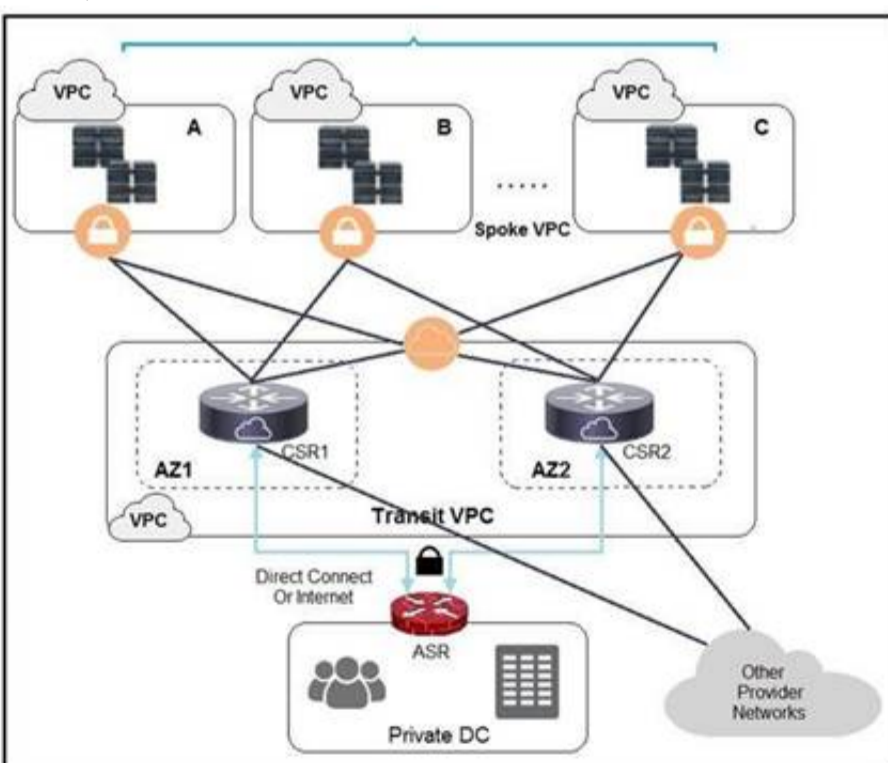
```
node 'default' {
    cisco_yang_netconf { 'my-config':
        target => '<vrf xmlns='http://cisco.com/ns/yang/Cisco-IOS-XR-infra-rsi-cfg'>',
        source => '<vrf xmlns='http://cisco.com/ns/yang/Cisco-IOS-XR-infra-rsi-cfg'>
            <vrf>
                <vrf-name>VOIP</vrf-name>
                <create/>
                <description>Voice over IP</description>
                <vpn-id>
                    <vpn-oui>875</vpn-oui>
                    <vpn-index>3</vpn-index>
                </vpn-id>
            </vrf>
            <vrf>
                <vrf-name>INTERNET</vrf-name>
                <create/>
                <description>Generic external traffic</description>
                <vpn-id>
                    <vpn-oui>875</vpn-oui>
                    <vpn-index>22</vpn-index>
                </vpn-id>
            </vrf>
        </vrf>
    }
    mode => _____,
    force => _____,
}
```

Refer to the exhibit. This script uses ciscoyang to configure two VRF instances on a Cisco IOS-XR device using the Yang NETCONF type. Which two words are required to complete the script? (Choose two.)

- A. ensure
- B. commit
- C. false
- D. replace
- E. none

**Answer: CD**

**NEW QUESTION 20**



Refer to the exhibit. A company has extended networking from the data center to the cloud through Transit VPC. Which two statements describe the benefits of this approach? (Choose two.)

- A. Dynamic routing combined with multi-AZ- deployment creates a robust network infrastructure.
- B. VPC virtual gateways provide highly available connections to virtual networks.
- C. Dedicated VPC simplifies load balancing by combining internal and external web services.
- D. VPC virtual gateways provide more secure connections to virtual networks.
- E. Dedicated VPC simplifies routing by not combining this service with other shared services.

**Answer: BD**

NEW QUESTION 22

```
FROM alpine:3.7
RUN apk add --no-cache bash
```

Refer to the exhibit. Which additional line results in the output of Test 1 upon execution of the docker run --rm devnet 1 command in a Dockerfile with this content?

- A. CMD ["/bin/echo", "Test"]
- B. RUN ["/bin/echo", "Test"]
- C. ENTRYPOINT ["/bin/echo", "Test"]
- D. CMD ["/bin/echo Test"]

Answer: A

NEW QUESTION 24

```
- name: Configure Interfaces
  with_items: "{{interfaces}}"
  netconf_config:
    <<: *host_info
      xml: |
        <config>
          <interfaces xmlns="urn:ietf:params:xml:ns:yang:ietf-interfaces">
            <interface>
              <name>{{item.interface_type}}{{item.interface_id}}</name>
              <description>{{item.description}}</description>
              <type xmlns:ianaift="urn:ietf:params:xml:ns:yang:iana-if-type">ianaift:ethernetCsmacd</type>
              <enabled>true</enabled>
              <ipv4 xmlns="urn:ietf:params:xml:ns:yang:ietf-ip">
                <address>
                  <ip>{{item.ip_address}}</ip>
                  <netmask>{{item.subnet_mask}}</netmask>
                </address>
              </ipv4>
            </interface>
          </interfaces>
        </config>
```

Refer to the exhibit. As part of the Ansible playbook workflow, several new interfaces are being configured using the netconf\_config module. The task references the interface variables that are unique per device. In which directory is the YAML file with these variables found?

- A. host\_vars directory
- B. home directory
- C. group\_vars directory
- D. current working directory

Answer: A

NEW QUESTION 28

```
import sys, requests

URL = "http://ios-xe-mgmt.cisco.com:9443"
USER = 'root'
PASS = 'C!sco0123'

url = URL + "/restconf/data/ietf-interfaces:interfaces-state"
headers = {'content-type': 'application/vnd.yang-data+json', 'accept':
           'application/yang-data+json'}

try:
    result = requests.get(url, auth=(USER,PASS), headers=headers)
    r_json = result.json()
    flagDown = 0
    for record in r_json["ietf-interfaces:interfaces"]["interface"]:
        print("{0:<35}".format("interface: " + record["name"]), end="")
        print("{0:<5}".format("ip: "), end="")
        if 'address' in record["ietf-ip:ipv4"]:
            print("{0:<15}".format(record["ietf-ip:ipv4"]["address"][0]["ip"]), end="")
        else:
            print("{0:<15}".format(record["No IPv4"]), end="")
        print("{0:<9}".format("status: "), end="")
        print(str(record["enabled"]))
        if record["enabled"]==False:
            flagDown=1
    print("")
    if(flagDown):
        print("At least one interface is down")
    else:
        print("All interfaces are up")

except:
    print("Exception: " + str(sys.exc_info()[0]) + " " + str(sys.exc_info()[1]))
    print("Error: " + str(result.status_code), result.text)
```

Refer to the exhibit. What is the output of this IOS-XE configuration program?

- A. interface operational status in IPv6 addresses
- B. interface administrative status in IPv4 addresses
- C. interface operational status in IPv4 addresses
- D. interface administrative status in IPv6 addresses

Answer: D

**NEW QUESTION 29**

.....

## **Thank You for Trying Our Product**

### **We offer two products:**

1st - We have Practice Tests Software with Actual Exam Questions

2nd - Questions and Answers in PDF Format

### **350-901 Practice Exam Features:**

- \* 350-901 Questions and Answers Updated Frequently
- \* 350-901 Practice Questions Verified by Expert Senior Certified Staff
- \* 350-901 Most Realistic Questions that Guarantee you a Pass on Your First Try
- \* 350-901 Practice Test Questions in Multiple Choice Formats and Updates for 1 Year

**100% Actual & Verified — Instant Download, Please Click**  
**[Order The 350-901 Practice Test Here](#)**