



The-Open-Group

Exam Questions OGEA-101

TOGAF Enterprise Architecture Part 1 Exam (English)

NEW QUESTION 1

Which phase of the ADM has the purpose to develop an Enterprise Architecture Capability?

- A. Phase G
- B. Preliminary Phase
- C. Phase A
- D. Phase B

Answer: B

Explanation:

According to the TOGAF Standard, 10th Edition, the Preliminary Phase of the Architecture Development Method (ADM) has the purpose to develop an Enterprise Architecture Capability 1. An Enterprise Architecture Capability is the ability of the organization to perform the activities and tasks related to Enterprise Architecture, such as defining the scope, principles, vision, governance, and stakeholders of the architecture. The Preliminary Phase also establishes the architecture framework, the architecture repository, the architecture tools, and the architecture team 1. The other options are not correct, as they have different purposes in the ADM. Phase G: Implementation Governance has the purpose to ensure that the implementation projects conform to the target architecture 2. Phase A: Architecture Vision has the purpose to define the scope, stakeholders, business drivers, and objectives of the architecture project 3. Phase B: Business Architecture has the purpose to describe the baseline and target business architecture, and to identify the gaps between them . References: 1: TOGAF Standard, 10th Edition, Part II: Architecture Development Method, Chapter 6: Preliminary Phase. 2: TOGAF Standard, 10th Edition, Part II: Architecture Development Method, Chapter 18: Phase G: Implementation Governance. 3: TOGAF Standard, 10th Edition, Part II: Architecture Development Method, Chapter 12: Phase A: Architecture Vision. : TOGAF Standard, 10th Edition, Part II: Architecture Development Method, Chapter 13: Phase B: Business Architecture.

NEW QUESTION 2

What is defined as the effect of uncertainty on objectives?

- A. Vulnerability
- B. Risk
- C. Continuity
- D. Threat

Answer: B

Explanation:

Risk is defined as the effect of uncertainty on objectives, according to the ISO 31000 standard, which provides principles and guidelines for risk management1 Risk can be positive or negative, depending on whether the uncertainty affects the achievement or the failure of the objectives. Risk can also be expressed in terms of likelihood and impact, which indicate the probability and the consequence of the risk occurrence. Risk management is the coordinated activities to direct and control an organization with regard to risk. Risk management is an integral part of the TOGAF standard, as it helps to identify, assess, and treat the risks that may affect the architecture development and implementation2 References: 1: ISO 31000:2018, Risk management — Guidelines, Clause 3.1 2: The TOGAF Standard, Version 9.2, Part III: ADM Guidelines and Techniques, Chapter 32: Risk Management

NEW QUESTION 3

Which section of the TOGAF template for Architecture Principles should describe the relationship to other principles?

- A. Name
- B. Rationale
- C. Statement
- D. Implications

Answer: B

Explanation:

According to the TOGAF template for Architecture Principles, the Rationale section should describe the relationship to other principles, as well as the business benefits and the intentions of adhering to the principle. The Rationale section should use business terminology and point to the similarity of information and technology principles to the principles governing business operations. The Rationale section should also explain how the principle supports the achievement of the business objectives and key architecture drivers. References:

- ? Architecture Principles Template
- ? The TOGAF Standard, Version 9.2 - Architecture Principles
- ? The Open Group Exam OGEA-103 Topic 1 Question 4 Discussion

NEW QUESTION 4

Which of the following best summarizes the purpose of Enterprise Architecture?

- A. Taking major improvement decisions.
- B. Guiding effective change.
- C. Controlling the bigger changes.
- D. Governing the Stakeholders.

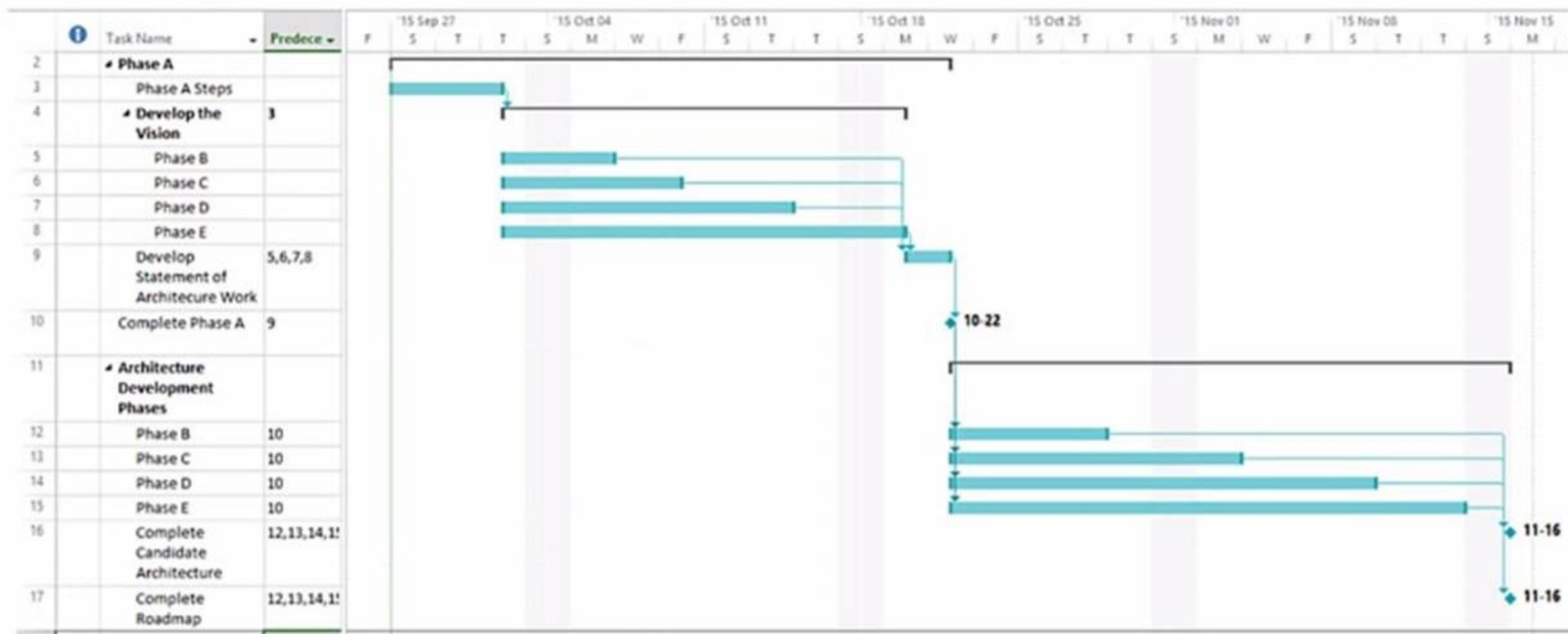
Answer: B

Explanation:

EA applies architecture principles and practices to analyze, design, plan, and implement enterprise analysis that supports digital transformation, IT growth, and the modernization of IT2. EA also helps organizations improve the efficiency, timeliness, and reliability of business information, as well as the alignment, agility, and adaptability of the architecture to the changing needs and requirements3. Therefore, the best summary of the purpose of EA is to guide effective change. References: 1: Enterprise architecture - Wikipedia 2: What is enterprise architecture? A framework for transformation 3: 3 The Purpose of Enterprise Architecture - The Open Group

NEW QUESTION 5

Consider the following chart:



Which important concept for Enterprise Architecture Practitioners does it illustrate?

- A. Enterprise Architects must use Gantt charts to communicate with Stakeholders.
- B. An Enterprise Architecture must be developed in phases with a limited fixed duration.
- C. ADM phases must be run in a sequenced approach to produce the Architecture.
- D. ADM phases must be run simultaneously until the relevant information has been produced.

Answer: C

Explanation:

The chart shown is a Gantt chart, which is commonly used for project management to illustrate a project schedule. In the context of TOGAF (The Open Group Architecture Framework), which is a framework for enterprise architecture, this Gantt chart is demonstrating the sequenced approach to the Architecture Development Method (ADM). The ADM is the core process of TOGAF which provides a tested and repeatable process for developing architectures. The ADM is described as being iterative, over the whole process, between phases, and within phases. For each iteration of the ADM, a fresh decision must be taken about each of the parameters (scope, granularity, time period, and architecture assets).

The ADM consists of a number of phases that have to be followed in sequence:

- ? Preliminary Phase: Framework and principles
- ? Phase A: Architecture Vision
- ? Phase B: Business Architecture
- ? Phase C: Information Systems Architectures, including Data and Application Architectures
- ? Phase D: Technology Architecture
- ? Phase E: Opportunities and Solutions
- ? Phase F: Migration Planning
- ? Phase G: Implementation Governance
- ? Phase H: Architecture Change Management
- ? Requirements Management

Each phase is dependent on the outputs of the previous phase and the Requirements Management phase runs throughout. The Gantt chart clearly shows the dependency and sequence in which these phases occur, implying that a structured approach is followed to produce the enterprise architecture.

References:

- ? The TOGAF Standard, Version 9.2, a standard of The Open Group
- ? The TOGAF documentation available at <https://publications.opengroup.org/standards/architecture> and <https://publications.opengroup.org/guides/architecture>

NEW QUESTION 6

What are the following activities part of?

- Initial risk assessment
- Risk mitigation and residual risk assessment
- Risk monitoring

- A. Risk Management
- B. Phase A
- C. Security Architecture
- D. Phase C

Answer: A

Explanation:

The following activities are part of Risk Management:

- ? Initial risk assessment
- ? Risk mitigation and residual risk assessment
- ? Risk monitoring

Risk Management is the process of identifying, assessing, and responding to risks that may affect the achievement of the enterprise's objectives. Risk Management involves balancing positive and negative outcomes resulting from the realization of either opportunities or threats. Reference: The TOGAF® Standard | The Open Group Website, Section 3.3.3 Risk Management.

NEW QUESTION 7

What is used to structure architectural information in an orderly way so that it can be processed to meet stakeholder needs?

- A. A Stakeholder Map
- B. An Architecture Framework
- C. Content Metamodel
- D. An EA Library

Answer: C

Explanation:

? A content metamodel is a formal structure that defines the types of entities and relationships that are used to capture, store, filter, query, and represent architectural information in a way that supports consistency, completeness, and traceability¹².

? A stakeholder map is a tool that identifies and analyzes the key stakeholders and their interests, influence, and expectations in relation to the architecture³. It is not used to structure architectural information, but rather to understand the stakeholder needs and concerns.

? An architecture framework is a set of principles, guidelines, standards, and tools that provide a common structure and methodology for developing architectures⁴. It is not used to structure architectural information, but rather to guide the architecture development process and ensure alignment with the business strategy and objectives.

? An EA library is a repository that stores and manages the architecture artifacts, deliverables, and other relevant information produced and consumed during the architecture development and governance. It is not used to structure architectural information, but rather to provide access, security, and version control for the architecture content.

References: 1: The TOGAF Standard, Version 9.2 - Content Metamodel 2: TOGAF 9.2 Content Metamodel Framework - A Quick Guide - KnowledgeHut 3: The TOGAF Standard, Version 9.2 - Stakeholder Management 4: The TOGAF Standard, Version 9.2 - Architecture Framework : The TOGAF Standard, Version 9.2 - Architecture Repository

NEW QUESTION 8

Complete the following sentence:

Presenting different _____ and _____ to stakeholders helps architects to extract hidden agendas principles and requirements that could impact the final Target Architecture

- A. Alternatives Trade-offs
- B. Solutions Applications
- C. Architecture Views Architecture Viewpoints
- D. Business Scenarios Business Models

Answer: C

Explanation:

According to the TOGAF Standard, an architecture view is a representation

of a system from the perspective of a related set of concerns¹. An architecture viewpoint is a specification of the conventions for a particular kind of architecture view¹. Presenting different architecture views and architecture viewpoints to stakeholders helps architects to extract hidden agendas, principles, and requirements that could impact the final target

architecture. This is because different stakeholders may have different concerns and interests in the system, and by showing them how the system addresses their concerns from different perspectives, the architects can elicit more feedback and validation from them². For example, a business stakeholder may be interested in the business architecture view, which focuses on the business processes, functions, and capabilities of the system³. A security stakeholder may be interested in the enterprise security view, which addresses the security aspects of the system, such as confidentiality, integrity, and availability³. By presenting these views to the respective stakeholders, the architects can ensure that the system meets their expectations and needs, and also identify any potential issues or gaps that may affect the target architecture. References: 1: The TOGAF Standard, Version 9.2 - Architectural Artifacts - TheOpen Group¹; 2: Understanding TOGAF Views and Viewpoints in Enterprise Architecture²; 3: Developing Architecture Views - The Open Group⁴

NEW QUESTION 9

What should be put in place through organization structures, roles, responsibilities, skills and processes to carry out architectural activity effectively?

- A. An EA Capability
- B. An Enterprise Architecture
- C. An EA framework
- D. An EA repository

Answer: A

Explanation:

An EA Capability is the ability of an organization to perform enterprise architecture effectively and efficiently. It involves establishing and maintaining the appropriate organization structures, roles, responsibilities, skills, processes, tools, and governance mechanisms to support the development and use of enterprise architecture. An EA Capability enables the organization to align its business and IT

strategies, deliver value from its investments, manage change and complexity, and improve its performance and agility¹² References: 1: The TOGAF Standard, Version 9.2, Part VI: Architecture Capability Framework, Chapter 44: Introduction 2: The TOGAF Standard, Version 9.2, Part VI: Architecture Capability Framework, Chapter 45: Establishing and Maintaining an Enterprise Architecture Capability

NEW QUESTION 10

Which of the following is a responsibility of an Architecture Board?

- A. Conducting assessments of the maturity level of architecture discipline within the organization
- B. Allocating resources for architecture projects
- C. Creating the Statement of Architecture Work
- D. Establishing targets for re-use of components

Answer: D

Explanation:

? An Architecture Board is an executive-level group responsible for the review and maintenance of the strategic architecture and all of its sub-architectures¹. It is a key element in a successful Architecture Governance strategy².

? An Architecture Board is typically made responsible, and accountable, for achieving some or all of the following goals²:

? Therefore, the correct answer is option D, which captures one of the goals of an Architecture Board as stated in the TOGAF Standard, Version 9.22.

? Option A is incorrect, because conducting assessments of the maturity level of architecture discipline within the organization is not a direct responsibility of an Architecture Board, but rather a part of the Architecture Capability Framework³.

? Option B is incorrect, because allocating resources for architecture projects is not a direct responsibility of an Architecture Board, but rather a part of the Architecture Governance Framework⁴.

? Option C is incorrect, because creating the Statement of Architecture Work is not a direct responsibility of an Architecture Board, but rather a part of the Architecture Development Method⁵. References:

? 1: Architecture Board - The Open Group³

? 2: TOGAF Standard, Version 9.2 - Part VI: Architecture Governance Framework - Architecture Board

? 3: TOGAF Standard, Version 9.2 - Part VI: Architecture Governance Framework - Architecture Capability Framework

? 4: TOGAF Standard, Version 9.2 - Part VI: Architecture Governance Framework - Architecture Governance Framework

? 5: TOGAF Standard, Version 9.2 - Part II: Architecture Development Method - Phase A: Architecture Vision

NEW QUESTION 10

Which statement about Requirements Management is most correct?

- A. The purpose of Requirements Management is to process change requests
- B. Stakeholder requirements are captured once in Phase A and managed throughout the ADM cycle
- C. Requirements Management is a step of all ADM Phases
- D. Requirements Management and stakeholder engagement are placed at the center of architecture development

Answer: D

Explanation:

This statement about Requirements Management is most correct because it reflects the central role of Requirements Management and stakeholder engagement in the ADM cycle. Requirements Management is not a step of all ADM Phases, but rather an ongoing process that ensures that all relevant requirements are elicited, analyzed, prioritized, and addressed throughout the architecture development and transition. Stakeholder engagement is also a continuous activity that involves identifying, communicating, and managing stakeholder expectations and concerns. Reference: The TOGAF® Standard | The Open Group Website, Section 3.1 Introduction to the ADM.

NEW QUESTION 15

What are the four dimensions used to scope an architecture?

- A. Business Data Application Technology
- B. Strategy Segment Capability Budget
- C. Breadth Depth Time Period Architecture Domains
- D. Strategy Portfolio Project Solution Delivery

Answer: C

Explanation:

? The four dimensions used to scope an architecture are Breadth, Depth, Time Period, and Architecture Domains¹, p. 8.

? Breadth refers to the extent of the enterprise covered by the architecture, which can range from a specific business unit to the entire organization¹, p. 8.

? Depth refers to the level of detail and completeness of the architecture, which can vary depending on the purpose, scope, and stakeholders of the architecture¹, p. 8.

? Time Period refers to the temporal aspects of the architecture, such as the current state, the target state, and the transition plan¹, p. 8.

? Architecture Domains refers to the classification of the architecture into four domains: Business, Data, Application, and Technology¹, p. 8.

? These four dimensions help define the scope and boundaries of the architecture and ensure that it meets the needs and expectations of the stakeholders.

References:

? 1: The Open Group (2018). The TOGAF® Standard, Version 9.2. 1

NEW QUESTION 17

Complete the sentence. Actions arising from the Business Transformation Readiness Assessment technique should be incorporated in the

- A. Architecture Requirements Specification
- B. Architecture Roadmap
- C. Implementation Governance Model
- D. Implementation and Migration Plan

Answer: D

Explanation:

The Business Transformation Readiness Assessment technique is used to evaluate the readiness of the organization to undergo change and to identify the actions needed to increase the likelihood of a successful business transformation. These actions should be incorporated in the Implementation and Migration Plan, which is the detailed plan to transition from the Baseline Architecture to the Target Architecture. The Implementation and Migration Plan also includes the Transition Architectures, the Architecture Building Blocks, the Work Packages, the Implementation Governance Model, and the Architecture Contract¹²

References: 1: The TOGAF Standard, Version 9.2, Part III: ADM Guidelines and Techniques, Chapter 27: Business Transformation Readiness Assessment 2: The TOGAF Standard, Version 9.2, Part II: Architecture Development Method (ADM), Chapter 21: Phase F: Migration Planning

NEW QUESTION 18

In which phase(s) of the ADM would you deal with the actions resulting from a transformation readiness assessment?

- A. Phase F
- B. Phase G
- C. Phase E and F
- D. Phase A

Answer: C

Explanation:

According to the TOGAF Standard, 10th Edition, a transformation readiness assessment is a technique that evaluates the preparedness of the organization to undergo a change, and identifies the actions needed to increase the likelihood of a successful outcome. A transformation readiness assessment can be conducted in Phase E: Opportunities and Solutions, and the actions resulting from it can be dealt with in Phase F: Migration Planning 1. In Phase E, the transformation readiness assessment can help to identify the major implementation challenges and risks, and to define the critical success factors and key performance indicators for the architecture project. In Phase F, the actions resulting from the transformation readiness assessment can help to develop a detailed and realistic migration plan, and to address the gaps, issues, and dependencies that may affect the transition to the target architecture 1. References: 1: TOGAF Standard, 10th Edition, Part III: ADM Guidelines and Techniques, Chapter 29: Business Transformation Readiness Assessment.

NEW QUESTION 23

Consider the following statement:

According to the TOGAF Standard a governed approach of a particular deliverable will ensure a system of continuous monitoring to check integrity changes decision-making and audit of all architecture-related activities

Which deliverable is being referred to?

- A. An Architecture Contract
- B. The Architecture Definition Document
- C. The Architecture Vision
- D. The Statement of Architecture Work

Answer: A

Explanation:

An Architecture Contract is a deliverable that specifies the responsibilities and obligations of the parties involved in the implementation and governance of an architecture. It ensures a system of continuous monitoring to check integrity changes decision-making and audit of all architecture-related activities. Reference: The TOGAF® Standard | The Open Group Website, Section 3.3.4 Architecture Contracts.

NEW QUESTION 24

Which of the following best describes the class of information known as the Reference Library within the Architecture Repository?

- A. Guidelines and templates used to create new architectures
- B. Specifications to which architectures must conform
- C. A record of the governance activity across the enterprise
- D. Processes to support governance of the Architecture Repository

Answer: A

Explanation:

The class of information known as the Reference Library within the Architecture Repository contains guidelines and templates used to create new architectures. The Reference Library provides a set of resources that can be leveraged or customized for specific architecture development purposes. It includes generic building blocks, patterns, models, standards, frameworks, methods, techniques, best practices, etc. Reference: The TOGAF® Standard | The Open Group Website, Section 2.4 Architecture Repository.

NEW QUESTION 25

What does the TOGAF ADM recommend for use in developing an Architecture Vision document?

- A. Requirements Management
- B. Architecture Principles
- C. Gap Analysis
- D. Business Scenarios

Answer: D

Explanation:

Business scenarios are a technique recommended by the TOGAF ADM for use in developing an Architecture Vision document¹². Business scenarios are a means of capturing the business requirements and drivers, the processes and actors involved, and the desired outcomes and measures of success³⁴. Business scenarios help to create a common vision and understanding among the stakeholders, and to identify and validate the architecture requirements . Business scenarios also provide a basis for analyzing the impact and value of the proposed architecture. References:

- The TOGAF Standard, Version 9.2 - Phase A: Architecture Vision - The Open Group
- TOGAF® Standard — Introduction - Phase A: Architecture Vision
- The TOGAF Standard, Version 9.2 - Definitions - The Open Group
- Business Scenarios - The Open Group
- [The TOGAF Standard, Version 9.2 - Architecture Requirements Specification - The Open Group]
- [The TOGAF Standard, Version 9.2 - Architecture Vision - The Open Group]
- [The TOGAF Standard, Version 9.2 - Business Transformation Readiness Assessment - The Open Group]

NEW QUESTION 27

Consider the following statements:

- * 1. Each contracted party is required to act responsibly to the organization and its stakeholders.
- * 2. All decisions taken, processes used, and their implementation will not be allowed to create unfair advantage to any one particular party.
- * 3. Digital Transformation and operations will be more effective and efficient.
- * 4. Strategic decision-making by C-Level executives and business leaders will be more effective.

Which statements highlight the value and necessity for Architecture Governance to be adopted within organizations?

- A. 1 & 2
- B. 2 & 3
- C. 3 & 4

D. 1 & 4

Answer: A

Explanation:

Architecture governance is the practice of ensuring compliance with the enterprise architecture and its principles, standards, and goals. Architecture governance provides the means to establish, monitor, and control the architecture development and implementation processes, and to resolve any issues or conflicts that may arise. Architecture governance also ensures that all stakeholders are represented and involved in the decision-making process, and that their interests and concerns are balanced and aligned. Statements 1 and 2 highlight the value and necessity for architecture governance to be adopted within organizations, as they emphasize the importance of responsibility, accountability, fairness, and transparency in the architectural activities. Statements 3 and 4 are more related to the benefits and outcomes of having a good enterprise architecture, rather than the governance aspect. References: : The TOGAF Standard, Version 9.2, Part VI: Architecture Capability Framework, Chapter 50: Architecture Governance : The TOGAF Standard, Version 9.2, Part III: ADM Guidelines and Techniques, Chapter 29: Architecture Governance

NEW QUESTION 28

Which of the following best describes the need for the ADM process to be governed?

- A. To enable development of reference architectures
- B. To verify that the method is being applied correctly
- C. To enable a fast response to market changes
- D. To permit the architecture domains to be integrated

Answer: B

Explanation:

According to the TOGAF standard, the need for the ADM process to be governed is to ensure that the architecture development and implementation activities are conducted in a consistent, coherent, and compliant manner¹. Governance provides the means to verify that the method is being applied correctly and effectively, and that the architecture deliverables and artifacts meet the quality and standards criteria¹. Governance also enables the management of risks, issues, changes, and dependencies that may arise during the ADM process¹.

Some of the benefits of governing the ADM process are²:

- Improved alignment of the architecture with the business strategy and objectives
 - Enhanced stakeholder engagement and communication
 - Increased reuse and integration of architecture assets and resources
 - Reduced complexity and duplication of architecture efforts
 - Increased agility and adaptability of the architecture to changing needs and requirements
 - Improved compliance and auditability of the architecture outcomes and outputs
- References: 1: Architecture Governance 2: Architecture Governance Benefits

NEW QUESTION 31

Which of the following describes how the Enterprise Continuum is used when developing an enterprise architecture?

- A. To identify and understand business requirements
- B. To coordinate with the other management frameworks in use
- C. To describe how an architecture addresses stakeholder concerns
- D. To classify architecture and solution assets

Answer: D

Explanation:

The Enterprise Continuum consists of two complementary concepts: the Architecture Continuum and the Solutions Continuum¹. The Architecture Continuum provides a consistent way to describe and understand the generic and reusable architecture building blocks, such as models, patterns, and standards, that can be applied and tailored to specific situations². The Solutions Continuum provides a consistent way to describe and understand the specific and implemented solution building blocks, such as products, services, and components, that realize the architecture building blocks³. The Enterprise Continuum enables the reuse and integration of architecture and solution assets

across different levels of abstraction, scope, and detail, ranging from foundation architectures to organization-specific architectures¹.

The Enterprise Continuum is used when developing an enterprise architecture to support the following activities¹:

- Selecting relevant architecture and solution assets from the Architecture Repository or other sources, based on the business drivers, goals, and requirements
- Adapting and customizing the architecture and solution assets to suit the specific needs and context of the enterprise
- Defining and developing the target architecture and the architecture roadmap, based on the gaps and opportunities identified between the baseline and the target states
- Defining and developing the implementation and migration plan, based on the architecture roadmap and the solution building blocks
- Governing and managing the architecture and solution assets throughout the architecture lifecycle, ensuring their quality, consistency, and compliance

References: 1: The TOGAF Standard, Version 9.2 - Enterprise Continuum 2: The TOGAF Standard, Version 9.2 - Architecture Continuum 3: The TOGAF Standard, Version 9.2 - Solutions Continuum

NEW QUESTION 36

Complete the following sentence. In the ADM, documents which are under development and have not undergone any formal review and approval process are called Documents which have been reviewed and approved are called

- A. "draft"- "finalized"
- B. "draft" - "approved"
- C. "concept" - "deliverable"
- D. "Version 0.1" - "Version 1.0"

Answer: B

Explanation:

According to the TOGAF Standard, 10th Edition, documents which are under development and have not undergone any formal review and approval process are called draft documents, while documents which have been reviewed and approved are called approved documents¹. Draft documents are typically marked with a version number of 0.x, indicating that they are incomplete or provisional. Approved documents are typically marked with a version number of 1.0 or higher, indicating that they have been finalized and authorized. The other options are not correct, as they are not the terms used by the TOGAF Standard to distinguish

between documents under development and documents that have been reviewed and approved. The terms ??finalized??, ??concept??, ??deliverable??, and ??Version 0.1?? and ??Version 1.0?? are not specific to the TOGAF Standard, and they may have different meanings or interpretations in different contexts. References: 1: TOGAF Standard, 10th Edition, Part II: Architecture Development Method, Chapter 7: Applying Iteration to the ADM, Section 7.2.3 Document Categorization.

NEW QUESTION 38

Which one of the following classes of information within the Architecture Repository would typically contain a list of the applications in use within the enterprise?

- A. Reference Library
- B. Architecture Metamodel
- C. Architecture Landscape
- D. Governance Log

Answer: C

Explanation:

The Architecture Landscape is a class of information within the Architecture Repository that shows an architectural view of the building blocks that are in use within the organization today (the Baseline Architecture), as well as those that are planned for the future (the Target Architecture). The Architecture Landscape typically contains a list of the applications in use within the enterprise, along with their relationships and dependencies, as well as other relevant architectural information. The Architecture Landscape helps to identify opportunities for re-use, consolidation, or retirement of existing applications, as well as gaps or overlaps in the current or future architecture. References: : The TOGAF Standard, Version 9.2, Part IV: Architecture Content Framework, Chapter 34: Architecture Landscape : The TOGAF Standard, Version 9.2, Part VI: Architecture Capability Framework, Chapter 47: Architecture Repository

NEW QUESTION 42

Complete the sentence The Architecture Landscape is divided into levels known as .

- A. Gaps Plateaus, and Target Architectures
- B. Baselin
- C. Transition and To Be Architectures
- D. Segment Strategic and Capability Architectures
- E. Transitional Complete and incremental Architectures

Answer: C

Explanation:

The Architecture Landscape is divided into levels known as Segment Strategic and Capability Architectures. These levels correspond to different scopes and purposes of architectures within an enterprise. Segment Architectures are architectures that address specific business units, functions, or processes within an enterprise. Strategic Architectures are architectures that provide a high-level view of the enterprise??s vision, goals, and direction. Capability Architectures are architectures that address specific business capabilities or services that span multiple segments or domains. Reference: The TOGAF® Standard | The Open Group Website, Section 2.4 Architecture Repository.

NEW QUESTION 46

Complete the sentence When considering agile development Architecture to Support Project will identify what products the Enterprise needs the boundary of the products and what constraints a product owner has. this defines the Enterprise's .

- A. operations
- B. backlog
- C. workflow management
- D. lifecycle economics

Answer: B

Explanation:

When considering agile development, Architecture to Support Project will identify what products the enterprise needs, the boundary of the products, and what constraints a product owner has. This defines the enterprise??s backlog. A backlog is a list of features or tasks that need to be done to deliver a product or service. It is prioritized by the product owner based on the value and urgency of each item. Reference: The TOGAF® Standard | The Open Group Website, Section 3.3.5 Architecture to Support Project.

NEW QUESTION 51

.....

Thank You for Trying Our Product

We offer two products:

1st - We have Practice Tests Software with Actual Exam Questions

2nd - Questions and Answers in PDF Format

OGEA-101 Practice Exam Features:

- * OGEA-101 Questions and Answers Updated Frequently
- * OGEA-101 Practice Questions Verified by Expert Senior Certified Staff
- * OGEA-101 Most Realistic Questions that Guarantee you a Pass on Your FirstTry
- * OGEA-101 Practice Test Questions in Multiple Choice Formats and Updatesfor 1 Year

100% Actual & Verified — Instant Download, Please Click
[Order The OGEA-101 Practice Test Here](#)