

PMI

Exam Questions CAPM

Certified Associate in Project Management (PMI-100)



NEW QUESTION 1

- (Exam Topic 3)

Which of the following techniques is used during Control Scope?

- A. Cost-benefit analysis
- B. Variance analysis
- C. Reserve analysis
- D. Stakeholder analysis

Answer: B

NEW QUESTION 2

- (Exam Topic 3)

Which type of analysis is used to examine project results through time to determine if performance is improving or deteriorating?

- A. Control chart
- B. Earned value
- C. Variance
- D. Trend

Answer: D

NEW QUESTION 3

- (Exam Topic 3)

Which type of analysis would be used for the Plan Quality process?

- A. Schedule
- B. Checklist
- C. Assumption
- D. Cost-Benefit

Answer: D

NEW QUESTION 4

- (Exam Topic 3)

When does Monitor and Control Risks occur?

- A. At project initiation
- B. During work performance analysis
- C. Throughout the life of the project
- D. At project milestones

Answer: C

NEW QUESTION 5

- (Exam Topic 3)

An input required in Define Scope is an organizational:

- A. structure.
- B. process asset.
- C. matrix.
- D. breakdown structure.

Answer: B

NEW QUESTION 6

- (Exam Topic 3)

Which of the following involves making information available to project stakeholders in a timely manner?

- A. Plan Communications
- B. Performance reporting
- C. Project status reports
- D. Distribute Information

Answer: D

NEW QUESTION 7

- (Exam Topic 3)

Which is an example of Administer Procurements?

- A. Negotiating the contract
- B. Authorizing contractor work
- C. Developing the statement of work
- D. Establishing evaluation criteria

Answer: B

NEW QUESTION 8

- (Exam Topic 3)

An output of the Create WBS process is:

- A. Scope baseline.
- B. Project scope statement.
- C. Organizational process assets.
- D. Requirements traceability matrix.

Answer: A

NEW QUESTION 9

- (Exam Topic 3)

Which component of the human resource management plan describes when and how project team members are acquired and how long they will be needed?

- A. Resource breakdown structure
- B. Staffing management plan
- C. Project organizational chart
- D. Scope management plan

Answer: B

NEW QUESTION 10

- (Exam Topic 3)

Which enterprise environmental factors are considered during Estimate Costs?

- A. Market conditions and published commercial information
- B. Company structure and market conditions
- C. Commercial information and company structure
- D. Existing human resources and market conditions

Answer: A

NEW QUESTION 10

- (Exam Topic 3)

An input to the Create WBS process is a:

- A. project charter.
- B. stakeholder register.
- C. project scope statement.
- D. requirements traceability matrix.

Answer: C

NEW QUESTION 13

- (Exam Topic 3)

Which of the following is TRUE about most project life cycles?

- A. Staffing level is highest at the start.
- B. The stakeholders' influence is highest at the start.
- C. The level of uncertainty is lowest at the start.
- D. The cost of changes is highest at the start.

Answer: B

NEW QUESTION 15

- (Exam Topic 3)

Who selects the appropriate processes for a project?

- A. Project stakeholders
- B. Project sponsor and project stakeholder
- C. Project manager and project team
- D. Project manager and project sponsor

Answer: C

NEW QUESTION 19

- (Exam Topic 3)

Which estimating technique uses the actual costs of previous similar projects as a basis for estimating the costs of the current project?

- A. Analogous
- B. Parametric
- C. Bottom-up

D. Top-down

Answer: A

NEW QUESTION 20

- (Exam Topic 3)

Which type of analysis systemically gathers and analyzes qualitative and quantitative information to determine which interests should be taken into account throughout the project?

- A. Product
- B. Cost-benefit
- C. Stakeholder
- D. Research

Answer: C

NEW QUESTION 21

- (Exam Topic 3)

A procurement management plan is a subsidiary of which other type of plan?

- A. Resource plan
- B. Project management plan
- C. Cost control plan
- D. Expected monetary value plan

Answer: B

NEW QUESTION 22

- (Exam Topic 3)

An output of the Develop Project Team process is:

- A. change requests
- B. team performance assessments
- C. project staff assignments
- D. project documents updates

Answer: B

NEW QUESTION 24

- (Exam Topic 3)

At which point of the project is the uncertainty the highest and the risk of failing the greatest?

- A. Final phase of the project
- B. Start of the project
- C. End of the project
- D. Midpoint of the project

Answer: B

NEW QUESTION 29

- (Exam Topic 3)

What type of reward can hurt team cohesiveness?

- A. Sole-sum
- B. Win-lose
- C. Lose-win
- D. Partial-sum

Answer: B

NEW QUESTION 32

- (Exam Topic 3)

Identifying major deliverables, deciding if adequate cost estimates can be developed, and identifying tangible components of each deliverable are all part of which of the following?

- A. Work breakdown structure
- B. Organizational breakdown structure
- C. Resource breakdown structure
- D. Bill of materials

Answer: A

NEW QUESTION 36

- (Exam Topic 3)

Organizational planning impacts projects by means of project prioritization based on risk, funding, and an

organizations:

- A. Budget plan
- B. Resource plan
- C. Scope plan
- D. Strategic plan

Answer: D

NEW QUESTION 37

- (Exam Topic 3)

An input of the Plan Procurement Management process is:

- A. Make-or-buy decisions.
- B. Activity cost estimates.
- C. Seller proposals.
- D. Procurement documents.

Answer: B

NEW QUESTION 38

- (Exam Topic 3)

Which Process Group typically consumes the bulk of a project's budget?

- A. Monitoring and Controlling
- B. Executing
- C. Planning
- D. Initiating

Answer: B

NEW QUESTION 39

- (Exam Topic 3)

The scope management plan is a subsidiary of which project document?

- A. Schedule management plan
- B. Project management plan
- C. Quality management plan
- D. Resource management plan

Answer: B

NEW QUESTION 44

- (Exam Topic 3)

Which of the following tools or techniques is used for Estimate Activity Durations?

- A. Critical path method
- B. Rolling wave planning
- C. Precedence diagramming method
- D. Parametric estimating

Answer: D

NEW QUESTION 45

- (Exam Topic 3)

Which of the following statements best describes the influence of stakeholders and the cost of changes as project time advances?

- A. The influence of the stakeholders increases, the cost of changes increases.
- B. The influence of the stakeholders decreases, the cost of changes increases.
- C. The influence of the stakeholders increases, the cost of changes decreases.
- D. The influence of the stakeholders decreases, the cost of changes decreases.

Answer: B

NEW QUESTION 50

- (Exam Topic 3)

Which of the following is contained within the communications management plan?

- A. An organizational chart
- B. Glossary of common terminology
- C. Organizational process assets
- D. Enterprise environmental factors

Answer: B

NEW QUESTION 53

- (Exam Topic 3)
During which process group is the quality policy determined?

- A. Initiating
- B. Executing
- C. Planning
- D. Controlling

Answer: C

NEW QUESTION 55

- (Exam Topic 3)
Conflict should be best addressed in which manner?

- A. Early, in private, using a direct, collaborative approach
- B. Early, in public, using an indirect, collaborative approach
- C. Early, in private, using an indirect, cooperative approach
- D. As late as possible, in public, using a direct, confrontational approach

Answer: A

NEW QUESTION 57

- (Exam Topic 3)
Which schedule network analysis technique modifies the project schedule to account for limited resources?

- A. Human resource planning
- B. Fast tracking
- C. Critical chain method
- D. Rolling wave planning

Answer: C

NEW QUESTION 60

- (Exam Topic 3)
Most experienced project managers know that:

- A. every project requires the use of all processes in the PMBOK® Guide.
- B. there is no single way to manage a project.
- C. project management techniques are risk free.
- D. there is only one way to manage projects successfully.

Answer: B

NEW QUESTION 65

- (Exam Topic 3)
Which of the seven basic quality tools is especially useful for gathering attributes data while performing inspections to identify defects?

- A. Histograms
- B. Scatter diagrams
- C. Flowcharts
- D. Checksheets

Answer: D

NEW QUESTION 66

- (Exam Topic 3)
What is a hierarchically organized depiction of the identified project risks arranged by risk category?

- A. Risk register
- B. Risk breakdown structure (RBS)
- C. Risk management plan
- D. Risk category

Answer: B

NEW QUESTION 69

- (Exam Topic 3)
Which of the following statements correctly characterizes pull communication?

- A. It includes letters, memos, reports, emails, and faxes.
- B. It requires recipients to access communication content at their own discretion.
- C. It is the most efficient way to ensure a common understanding among all participants.
- D. It is primarily used when the volume of information to be transferred is minimal.

Answer: B

NEW QUESTION 72

- (Exam Topic 3)

What are the formal and informal policies, procedures, and guidelines that could impact how the project's scope is managed?

- A. Organizational process assets
- B. Enterprise environmental factors
- C. Project management processes
- D. Project scope management plan

Answer: A

NEW QUESTION 74

- (Exam Topic 3)

Which type of manager is assigned by the performing organization to lead the team that is responsible for achieving the project objectives?

- A. Program
- B. Functional
- C. Project
- D. Portfolio

Answer: C

NEW QUESTION 75

- (Exam Topic 3)

What is the difference between the critical path and the critical chain?

- A. Scope changes
- B. Resource limitations
- C. Risk analysis
- D. Quality audits

Answer: B

NEW QUESTION 78

- (Exam Topic 3)

As part of a mid-project evaluation, the project sponsor has asked for a forecast of the total project cost. What should be used to calculate the forecast?

- A. BAC
- B. EAC
- C. ETC
- D. WBS

Answer: B

NEW QUESTION 82

- (Exam Topic 3)

Definitions of probability and impact, revised stakeholder tolerances, and tracking are components of which subsidiary plan?

- A. Cost management plan
- B. Quality management plan
- C. Communications management plan
- D. Risk management plan

Answer: D

NEW QUESTION 84

- (Exam Topic 3)

What is the probability of occurrence if the risk rating is 0.56 and the impact if the risk does occur is very high (0.80)?

- A. 0.45
- B. 0.56
- C. 0.70
- D. 1.36

Answer: C

NEW QUESTION 89

- (Exam Topic 3)

Which action should a project manager take to ensure that the project management plan is effective and current?

- A. Conduct periodic project performance reviews.
- B. Identify quality project standards.
- C. Follow ISO 9000 quality standards.
- D. Complete the quality control checklist.

Answer: A

NEW QUESTION 94

- (Exam Topic 3)

Which is one of the major outputs of Sequence Activities?

- A. Responsibility assignment matrix (RAM)
- B. Work breakdown structure (WBS) update
- C. Project schedule network diagram
- D. Mandatory dependencies list

Answer: C

NEW QUESTION 99

- (Exam Topic 3)

Projects can be divided into phases to provide better management control. Collectively, what are these phases known as?

- A. Complete project phase
- B. Project life
- C. The project life cycle
- D. Project cycle

Answer: C

NEW QUESTION 104

- (Exam Topic 3)

When an activity cannot be estimated with a reasonable degree of confidence, the work within the activity is decomposed into more detail using which type of estimating?

- A. Bottom-up
- B. Parametric
- C. Analogous
- D. Three-point

Answer: A

NEW QUESTION 106

- (Exam Topic 3)

Which of the following is an output of the Monitor and Control Project Work process?

- A. Change requests
- B. Performance reports
- C. Organizational process assets
- D. Project management plan

Answer: A

NEW QUESTION 109

- (Exam Topic 3)

A measure of cost performance that is required to be achieved with the remaining resources in order to meet a specified management goal and is expressed as the ratio of the cost needed for finishing the outstanding work to the remaining budget is known as the:

- A. budget at completion (BAC)
- B. earned value management (EVM)
- C. to-complete performance index
- D. cost performance index

Answer: C

NEW QUESTION 112

- (Exam Topic 3)

Activity resource requirements and the resource breakdown structure (RBS) are outputs of which Project Time Management process?

- A. Control Schedule
- B. Define Activities
- C. Develop Schedule
- D. Estimate Activity Resources

Answer: D

NEW QUESTION 114

- (Exam Topic 3)

An input of the Control Schedule process is the:

- A. resource calendar.
- B. activity list.
- C. risk management plan.
- D. organizational process assets.

Answer: D

NEW QUESTION 118

- (Exam Topic 3)

Which tool is used to develop technical details within the project management plan?

- A. Expert judgment
- B. Project management methodology
- C. Project management information system (PMIS)
- D. Project selection methods

Answer: A

NEW QUESTION 123

- (Exam Topic 3)

A project management office manages a number of aspects including the:

- A. Project scope, schedule, cost, and quality of the products of the work packages.
- B. Central coordination of communication management across projects.
- C. Assignment of project resources to best meet project objectives.
- D. Overall risk, overall opportunity, and interdependencies among projects at the enterprise level.

Answer: D

NEW QUESTION 125

- (Exam Topic 3)

Which tool or technique of Plan Quality involves comparing actual or planned practices to those of other projects to generate ideas for improvement and provide a basis by which to measure performance?

- A. Histogram
- B. Quality audits
- C. Benchmarking
- D. Performance measurement analysis

Answer: C

NEW QUESTION 126

- (Exam Topic 3)

When would resource leveling be applied to a schedule model?

- A. Before constraints have been identified
- B. Before it has been analyzed by the critical path method
- C. After it has been analyzed by the critical path method
- D. After critical activities have been removed from the critical path

Answer: C

NEW QUESTION 131

- (Exam Topic 3)

Which process uses occurrence probability and impact on project objectives to assess the priority of identified risks?

- A. Identify Risks
- B. Perform Qualitative Risk Analysis
- C. Plan Risk Management
- D. Perform Quantitative Risk Analysis

Answer: B

NEW QUESTION 134

- (Exam Topic 3)

Outputs of the Control Communications process include:

- A. expert judgment and change requests
- B. work performance information and change requests
- C. project management plan updates and work performance information
- D. issue logs and organizational process assets updates

Answer: B

NEW QUESTION 139

- (Exam Topic 3)

What is one of the objectives of Project Risk Management?

- A. Decrease the probability and impact of an event on project objectives.
- B. Distinguish between a project risk and a project issue so that a risk mitigation plan can be put in place.

- C. Increase the probability and impact of positive events.
- D. Removal of project risk.

Answer: C

NEW QUESTION 141

- (Exam Topic 3)

The individual or group that provides resources and support for a project and is accountable for success is the:

- A. sponsor
- B. customer
- C. business partners
- D. functional managers

Answer: A

NEW QUESTION 142

- (Exam Topic 3)

What cost control technique is used to compare actual project performance to planned or expected performance?

- A. Cost aggregation
- B. Trend analysis
- C. Forecasting
- D. Variance analysis

Answer: D

NEW QUESTION 143

- (Exam Topic 3)

Who, along with the project manager, is supposed to direct the performance of the planned project activities and manage the various technical and organizational interfaces that exist within the project?

- A. The customer and functional managers
- B. The risk owners and stakeholders
- C. The sponsors and stakeholders
- D. The project management team

Answer: D

NEW QUESTION 147

- (Exam Topic 3)

The scope of a project cannot be defined without some basic understanding of how to create the specified:

- A. objectives
- B. schedule
- C. product
- D. approach

Answer: C

NEW QUESTION 152

- (Exam Topic 3)

What is the name of a graphic display of project team members and their reporting relationships?

- A. Role dependencies chart
- B. Reporting flow diagram
- C. Project organization chart
- D. Project team structure diagram

Answer: C

NEW QUESTION 155

- (Exam Topic 3)

What tool and technique is used to determine whether work and deliverables meet requirements and product acceptance criteria?

- A. Decomposition
- B. Benchmarking
- C. Inspection
- D. Checklist analysis

Answer: C

NEW QUESTION 160

- (Exam Topic 3)

The integrative nature of project management requires which Process Group to interact with the other Process Groups?

- A. Planning
- B. Executing
- C. Monitoring and Controlling
- D. Project Management

Answer: C

NEW QUESTION 162

- (Exam Topic 3)

Which tool and technique identifies inefficient and ineffective policies, processes, and procedures?

- A. Scope audits
- B. Scope reviews
- C. Quality audits
- D. Control chart

Answer: C

NEW QUESTION 164

- (Exam Topic 3)

Which process includes prioritizing risks for subsequent further analysis or action by assessing and combining their probability of occurrence and impact?

- A. Perform Qualitative Risk Analysis
- B. Perform Quantitative Risk Analysis
- C. Plan Risk Management
- D. Plan Risk Responses

Answer: A

NEW QUESTION 166

- (Exam Topic 3)

Which activity is an input to the Conduct Procurements process?

- A. Organizational process assets
- B. Resource availability
- C. Perform Integrated Change Control
- D. Team performance assessment

Answer: A

NEW QUESTION 167

- (Exam Topic 3)

Which Knowledge Area is concerned with the processes required to ensure timely and appropriate generation, collection, distribution, storage, retrieval, and ultimate disposition of project information?

- A. Project Integration Management
- B. Project Communications Management
- C. Project Information Management System (PIMS)
- D. Project Scope Management

Answer: B

NEW QUESTION 170

- (Exam Topic 3)

Which Process Group's purpose is to track, review, and regulate the progress and performance of the project; identify any areas in which changes to the plan are required; and initiate the corresponding changes?

- A. Monitoring and Controlling
- B. Initiating
- C. Planning
- D. Executing

Answer: A

NEW QUESTION 171

- (Exam Topic 3)

Which of the following risk response strategies involves allocating ownership of a positive risk to a third party?

- A. Mitigate
- B. Transfer
- C. Share
- D. Avoid

Answer: C

NEW QUESTION 176

- (Exam Topic 3)

The formal and informal interaction with others in an organization industry, or professional environment is known as:

- A. negotiation
- B. organizational theory
- C. meeting
- D. networking

Answer: D

NEW QUESTION 180

- (Exam Topic 3)

The process of identifying and documenting the specific actions to be performed to produce the project deliverables is known as:

- A. Define Activities.
- B. Sequence Activities.
- C. Define Scope.
- D. Control Schedule.

Answer: A

NEW QUESTION 184

- (Exam Topic 3)

The procurement process that documents agreements and related documentation for future reference is known as:

- A. Plan Procurements.
- B. Control Procurements.
- C. Close Procurements.
- D. Conduct Procurements.

Answer: C

NEW QUESTION 189

- (Exam Topic 3)

Information collected on the status of project activities being performed to accomplish the project work is known as what?

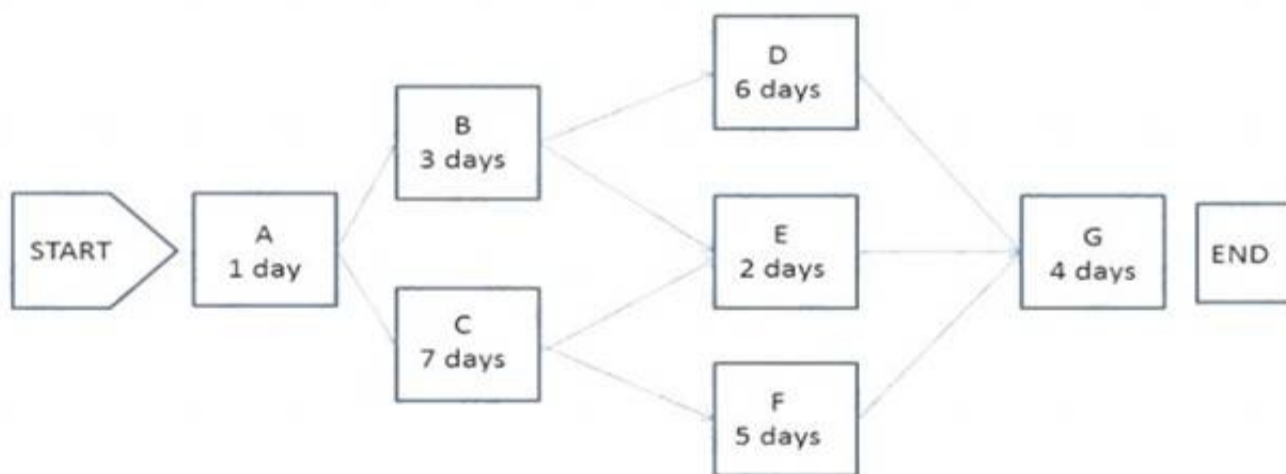
- A. Project management information system
- B. Work performance information
- C. Work breakdown structure
- D. Variance analysis

Answer: B

NEW QUESTION 190

- (Exam Topic 2)

The following is a network diagram for a project.



The total float for the project is how many days?

- A. 3
- B. 5
- C. 7
- D. 9

Answer: A

NEW QUESTION 194

- (Exam Topic 2)

An example of a group decision-making technique is:

- A. nominal group technique
- B. majority
- C. affinity diagram
- D. multi-criteria decision analysis

Answer: B

NEW QUESTION 195

- (Exam Topic 2)

The scope management plan and scope baseline are contained in:

- A. organizational process assets
- B. a requirements traceability matrix
- C. the project charter
- D. the project management plan

Answer: D

NEW QUESTION 198

- (Exam Topic 2)

At the completion of a project, a report is prepared that details the outcome of the research conducted on a global trend during the project. Which item did this project create?

- A. Result
- B. Product
- C. Service
- D. Improvement

Answer: A

NEW QUESTION 200

- (Exam Topic 2)

A stakeholder expresses a need not known to the project manager. The project manager most likely missed a step in which stakeholder management process?

- A. Plan Stakeholder Management
- B. Identify Stakeholders
- C. Manage Stakeholder Engagement
- D. Control Stakeholder Engagement

Answer: A

NEW QUESTION 203

- (Exam Topic 2)

Which output is the approved version of the time-phased project budget?

- A. Resource calendar
- B. Scope baseline
- C. Trend analysis
- D. Cost baseline

Answer: D

NEW QUESTION 205

- (Exam Topic 2)

Which Control Stakeholder Engagement tool or technique allows the project manager to consolidate and facilitate distribution of reports?

- A. Information management systems
- B. Work performance reports
- C. Stakeholder analysis
- D. Data gathering and representation

Answer: A

NEW QUESTION 208

- (Exam Topic 2)

Projects that share common outcomes, collective capability, knowledge, or skills are often grouped into a:

- A. portfolio
- B. program
- C. selection
- D. sub portfolio

Answer: B

NEW QUESTION 212

- (Exam Topic 2)

A disadvantage associated with virtual teams is that they:

- A. Require communication technology that is not readily available.
- B. Create difficulties when including people with disabilities.

- C. Often cannot accommodate teams that work different hours or shifts.
- D. Create the possibility for misunderstandings to arise.

Answer: D

NEW QUESTION 217

- (Exam Topic 2)

A full-time project manager with low to moderate authority and part-time administrative staff is working in an organizational structure with which type of matrix?

- A. Strong
- B. Weak
- C. Managed
- D. Balanced

Answer: D

NEW QUESTION 221

- (Exam Topic 2)

The degree, amount, or volume of risk that an organization or individual will withstand is known as its risk:

- A. Analysis
- B. Appetite
- C. Tolerance
- D. Response

Answer: C

NEW QUESTION 226

- (Exam Topic 2)

During which process does the project team receive bids and proposals?

- A. Conduct Procurements
- B. Plan Procurements
- C. Estimate Costs
- D. Control Budget

Answer: A

NEW QUESTION 231

- (Exam Topic 2)

Organizational process assets, a lessons-learned database, and historical information are all inputs to which process?

- A. Plan Cost Management
- B. Plan Scope Management
- C. Plan Stakeholder Management
- D. Plan Schedule Management

Answer: C

NEW QUESTION 236

- (Exam Topic 2)

Which term describes an assessment of correctness?

- A. Accuracy
- B. Precision
- C. Grade
- D. Quality

Answer: A

NEW QUESTION 240

- (Exam Topic 2)

Which Manage Communications tool or technique focuses on identifying and managing barriers?

- A. Communication methods
- B. Information technology
- C. Communication models
- D. Information management systems

Answer: C

NEW QUESTION 241

- (Exam Topic 2)

In a typical project, project managers spend most of their time:

- A. Estimating
- B. Scheduling
- C. Controlling
- D. Communicating

Answer: D

NEW QUESTION 246

- (Exam Topic 2)

Which output of Project Cost Management consists of quantitative assessments of the probable costs required to complete project work?

- A. Activity cost estimates
- B. Earned value management
- C. Cost management plan
- D. Cost baseline

Answer: A

NEW QUESTION 249

- (Exam Topic 2)

An element of the modern quality management approach used to achieve compatibility with the International Organization for Standardization (ISO) is known as:

- A. Forecasting,
- B. Brainstorming.
- C. Historical databases.
- D. Cost of quality.

Answer: D

NEW QUESTION 250

- (Exam Topic 2)

A project team attempts to produce a deliverable and finds that they have neither the expertise nor the time to complete the deliverable in a timely manner. This issue could have been avoided if they had created and followed a:

- A. risk management plan
- B. human resource management plan
- C. scope management plan
- D. procurement management plan

Answer: D

NEW QUESTION 254

- (Exam Topic 2)

An output of the Perform Integrated Change Control process is:

- A. Deliverables.
- B. Validated changes.
- C. The change log.
- D. The requirements traceability matrix.

Answer: C

NEW QUESTION 259

- (Exam Topic 2)

Which process is conducted from project inception through completion and is ultimately the responsibility of the project manager?

- A. Control Quality
- B. Monitor and Control Project Work
- C. Control Scope
- D. Perform Integrated Change Control

Answer: D

NEW QUESTION 264

- (Exam Topic 2)

Which Project Time Management process includes bottom-up estimating as a tool or technique?

- A. Estimate Activity Resources
- B. Sequence Activities
- C. Estimate Activity Durations
- D. Develop Schedule

Answer: A

NEW QUESTION 269

- (Exam Topic 2)

Activity cost estimates and the project schedule are inputs to which Project Cost Management process?

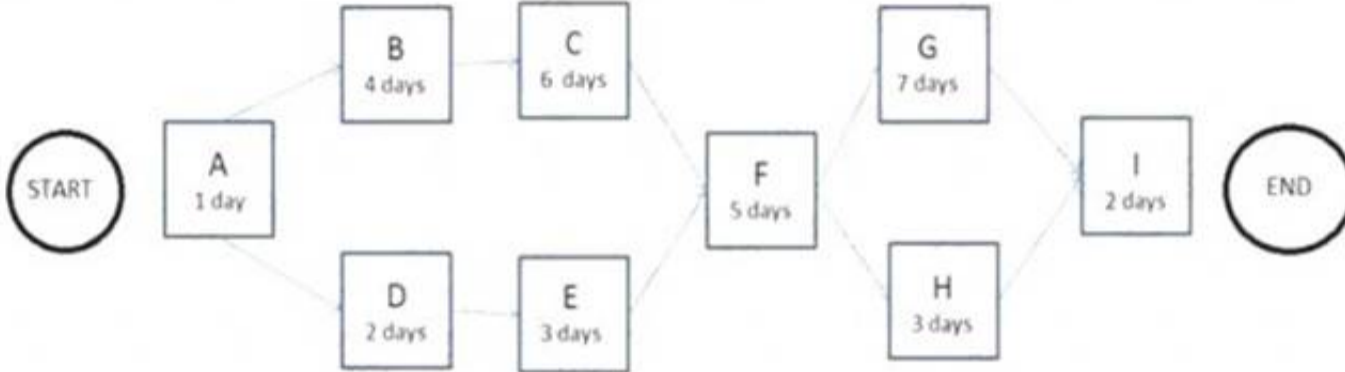
- A. Estimate Costs
- B. Control Costs
- C. Plan Cost Management
- D. Determine Budget

Answer: D

NEW QUESTION 272

- (Exam Topic 2)

The following is a network diagram for a project.



The total float for the project is how many days?

- A. 5
- B. 9
- C. 12
- D. 14

Answer: B

NEW QUESTION 276

- (Exam Topic 2)

Which quality tool may prove useful in understanding and estimating the cost of quality in a process?

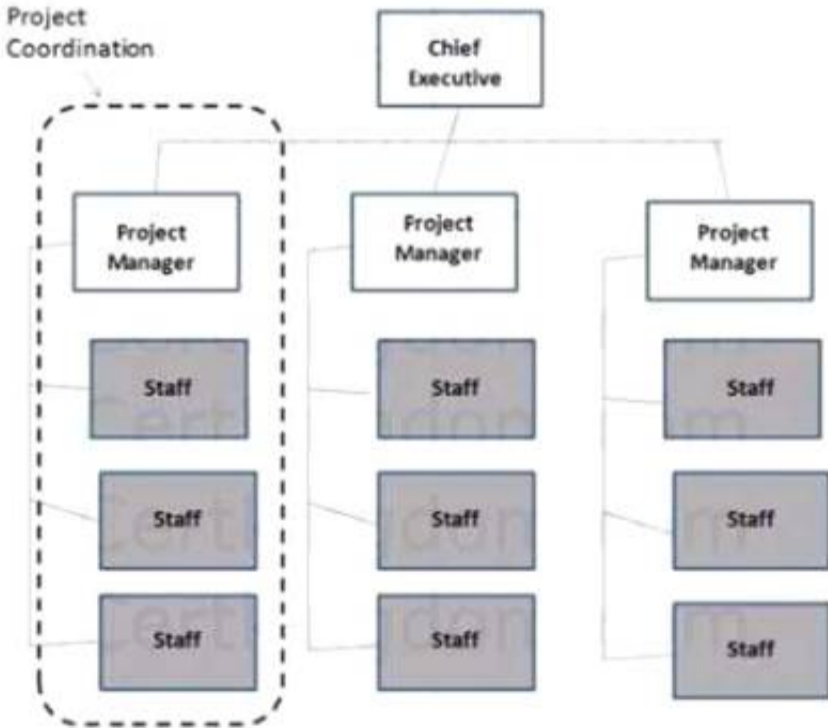
- A. Checksheets
- B. Histograms
- C. Flowcharts
- D. Control charts

Answer: C

NEW QUESTION 277

- (Exam Topic 2)

Which type of organizational structure is displayed in the diagram provided?



- A. Balanced matrix
- B. Projectized
- C. Strong matrix
- D. Functional

Answer: B

NEW QUESTION 280

- (Exam Topic 2)

The following chart contains information about the tasks in a project.

Task	PV	AC	EV
1	10,000	10,000	10,000
2	10,000	8,000	10,000
3	10,000	8,000	8,000
4	9,000	12,000	10,000
5	10,000	12,000	12,000
6	10,000	10,000	12,000
7	12,000	12,000	10,000
8	10,000	8,000	9,000
9	12,000	10,000	11,000

Based on the chart, what is the cost variance (CV) for Task 6?

- A. -2,000
- B. 1,000
- C. 2,000

Answer: D

NEW QUESTION 281

- (Exam Topic 2)

The chart below is an example of a:

ID	Requirements Description	Project Objectives	WBS Deliverables	Product Design	Product Development	Test Cases
001						
002						
003						

- A. Responsibility assignment matrix (RAM)
- B. Work breakdown structure (WBS)
- C. RACI chart
- D. Requirements traceability matrix

Answer: D

NEW QUESTION 285

- (Exam Topic 2)

Which is an enterprise environmental factor?

- A. Marketplace conditions
- B. Policies and procedures
- C. Project files from previous projects
- D. Lessons learned from previous projects

Answer: A

NEW QUESTION 286

- (Exam Topic 2)

Requirements documentation will typically contain at least:

- A. Stakeholder requirements, staffing requirements, and transition requirements.
- B. Business requirements, the stakeholder register, and functional requirements.
- C. Stakeholder impact, budget requirements, and communications requirements.
- D. Business objectives, stakeholder impact, and functional requirements.

Answer: D

NEW QUESTION 288

- (Exam Topic 2)

The purpose of developing a project scope management plan is to:

- A. Manage the timely completion of the project.
- B. Ensure that the project includes all of the work required.
- C. Make sure the project will satisfy the needs for which it was begun.
- D. Reduce the risk of negative events in the project.

Answer: B

NEW QUESTION 291

- (Exam Topic 2)

A project manager requesting industry groups and consultants to recommend project intervention is relying on:

- A. Communication models.
- B. Stakeholder participation.
- C. Expert judgment
- D. Enterprise environmental factors.

Answer: C

NEW QUESTION 292

- (Exam Topic 2)

Which of the Perform Quality Assurance tools and techniques may enhance the creation of the work breakdown structure (WBS) to give structure to the decomposition of the scope?

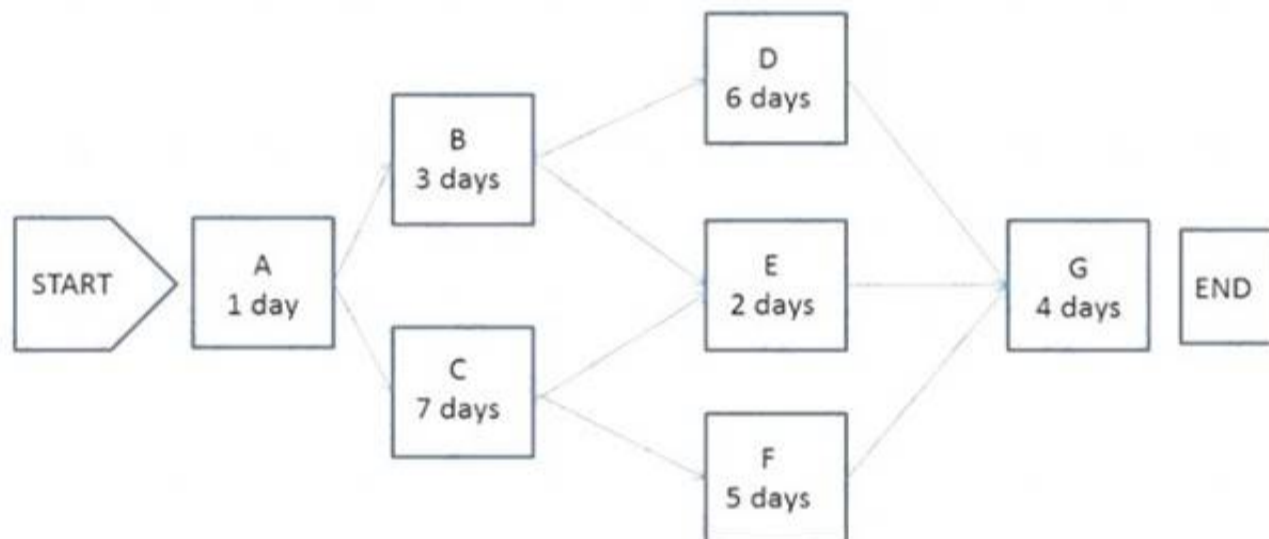
- A. Activity network diagrams
- B. Affinity diagrams
- C. Matrix diagrams
- D. Interrelationship digraphs

Answer: B

NEW QUESTION 294

- (Exam Topic 2)

The following is a network diagram for a project.



The critical path for the project is how many days in duration?

- A. 10
- B. 12
- C. 14
- D. 17

Answer: D

NEW QUESTION 295

- (Exam Topic 2)

Through whom do project managers accomplish work?

- A. Consultants and stakeholders
- B. Stakeholders and functional managers
- C. Project team members and consultants
- D. Project team members and stakeholders

Answer: D

NEW QUESTION 297

- (Exam Topic 2)

Outputs of the Control Communications process include:

- A. expert judgment and change requests.
- B. work performance information and change requests.
- C. organizational process asset updates and an issue log.
- D. project management plan updates and an issue log.

Answer: B

NEW QUESTION 299

- (Exam Topic 2)

Completion of the product scope is measured against the product:

- A. prototypes
- B. requirements
- C. analyses
- D. benchmarks

Answer: B

NEW QUESTION 303

- (Exam Topic 2)

In the Plan Procurement Management process, which source selection criteria analyzes if the seller's proposed technical methodologies, techniques, solutions, and services meet the procurement documents requirements?

- A. Technical approach
- B. Technical capability
- C. Business size and type
- D. Production capacity and interest

Answer: A

NEW QUESTION 305

- (Exam Topic 2)

The component of the risk management plan that documents how risk activities will be recorded is called:

- A. tracking
- B. scoping
- C. timing
- D. defining

Answer: A

NEW QUESTION 307

- (Exam Topic 2)

The Project Human Resource Management process that involves confirming human resource availability and obtaining the team necessary to complete project activities is:

- A. Acquire Project Team.
- B. Plan Human Resource Management.
- C. Manage Project Team.
- D. Develop Project Team.

Answer: A

NEW QUESTION 308

- (Exam Topic 2)

At the start of a typical project life cycle, costs are:

- A. low, peak as work is carried out, and drop as the project nears the end.
- B. low, become steady as work is carried out, and increase as the project nears the end.
- C. high, drop as work is carried out, and increase as the project nears the end.
- D. high, become low as work is carried out, and drop as the project nears the end.

Answer: A

NEW QUESTION 313

- (Exam Topic 2)

The methodology that combines scope, schedule, and resource measurements to assess project performance and progress is known as:

- A. Earned value management.
- B. Forecasting.
- C. Critical chain methodology.
- D. Critical path methodology.

Answer: A

NEW QUESTION 315

- (Exam Topic 2)

The degree of uncertainty an entity is willing to take on in anticipation of a reward is known as its risk:

- A. management

- B. response
- C. tolerance
- D. appetite

Answer: D

NEW QUESTION 317

- (Exam Topic 2)

For a stakeholder with low interest and high power, the project manager should:

- A. Monitor the stakeholder.
- B. Manage the stakeholder closely.
- C. Keep the stakeholder satisfied.
- D. Keep the stakeholder informed.

Answer: C

NEW QUESTION 319

- (Exam Topic 2)

Those who enter into a contractual agreement to provide services necessary for a project are:

- A. buyers
- B. sellers
- C. business partners
- D. product users

Answer: B

NEW QUESTION 323

- (Exam Topic 2)

When painting a bedroom, preparing the walls can be done while the paint is being chosen. This is an example of a:

- A. lead
- B. lag
- C. mandatory dependency
- D. internal dependency

Answer: A

NEW QUESTION 324

- (Exam Topic 2)

Which change request is an intentional activity that realigns the performance of the project work with the project management plan?

- A. Update
- B. Preventive action
- C. Defect repair
- D. Corrective action

Answer: D

NEW QUESTION 326

- (Exam Topic 2)

Project managers who lead by example and follow through on the commitments they make demonstrate the key interpersonal skill of:

- A. influencing
- B. leadership
- C. motivation
- D. coaching

Answer: A

NEW QUESTION 327

- (Exam Topic 2)

Which process involves the creation of a document that provides the project manager with the authority to apply resources to a project?

- A. Define Activities
- B. Direct and Manage Project Work
- C. Develop Project Management Plan
- D. Develop Project Charter

Answer: D

NEW QUESTION 328

- (Exam Topic 2)

The scope management plan and scope baseline are contained in:

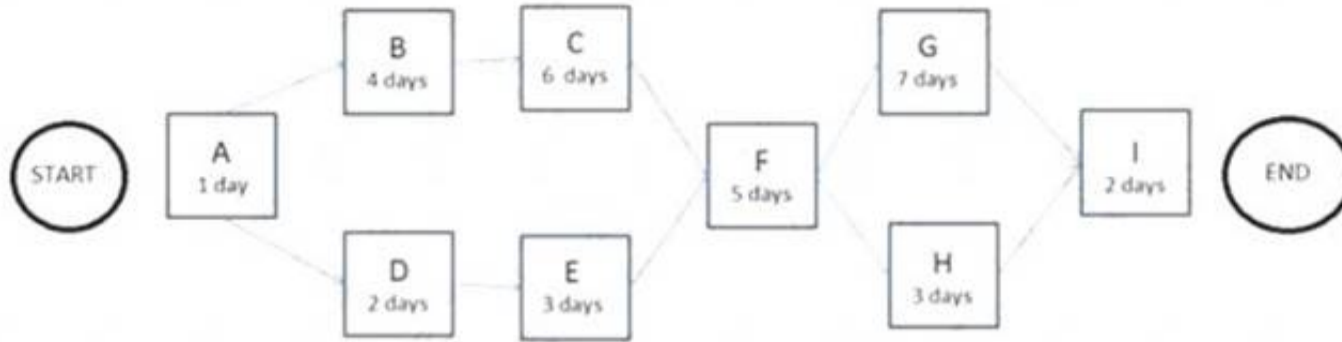
- A. organizational process assets
- B. a requirements traceability matrix
- C. the project charter
- D. the project management plan

Answer: D

NEW QUESTION 329

- (Exam Topic 2)

The following is a network diagram for a project.



The free float for Activity E is how many days?

- A. 2
- B. 3
- C. 5
- D. 8

Answer: C

NEW QUESTION 331

- (Exam Topic 2)

What is the risk rating if the probability of occurrence is 0.30 and the impact if it does occur is moderate (0.20)?

- A. 0.03
- B. 0.06
- C. 0.10
- D. 0.50

Answer: B

NEW QUESTION 334

- (Exam Topic 2)

The process of monitoring the status of the project and product scope as well as managing the changes to the scope baseline is known as:

- A. Validate Scope.
- B. Plan Scope Management.
- C. Control Scope.
- D. Define Scope.

Answer: C

NEW QUESTION 336

- (Exam Topic 2)

Which Perform Quality Assurance tool or technique is used to identify a problem, discover the underlying causes that lead to it, and develop preventative actions?

- A. Inspection
- B. Quality audits
- C. Design of experiments
- D. Root cause analysis

Answer: D

NEW QUESTION 337

- (Exam Topic 2)

Success is measured by benefits realization for a:

- A. strategic plan
- B. project
- C. portfolio
- D. program

Answer: C

NEW QUESTION 339

- (Exam Topic 2)

Which tool or technique used in the Control Procurements process can be conducted during the execution of the project to verify compliance with deliverables?

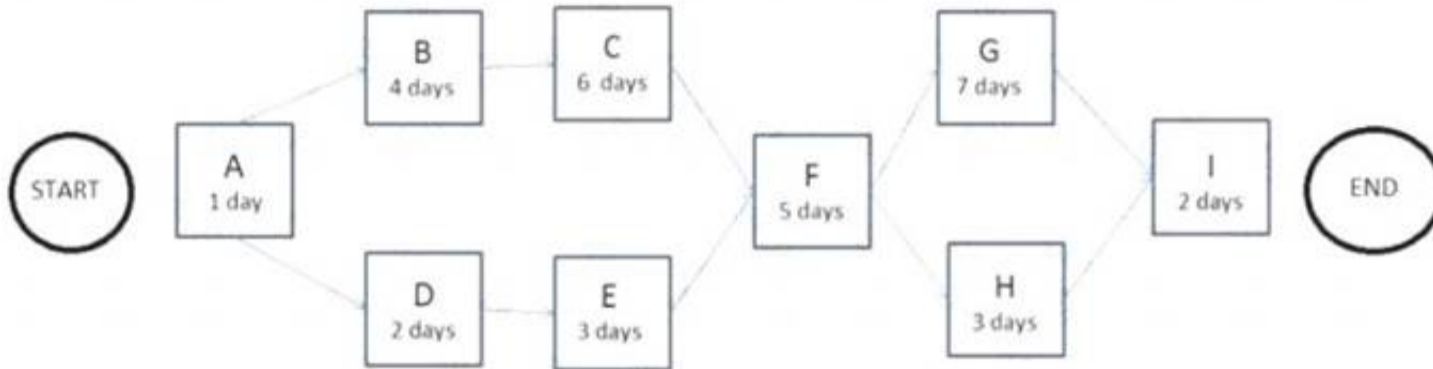
- A. Procurement documents
- B. Inspection and audits
- C. Estimate budget
- D. Risk register

Answer: B

NEW QUESTION 343

- (Exam Topic 2)

The following is a network diagram for a project.



The free float for Activity H is how many days?

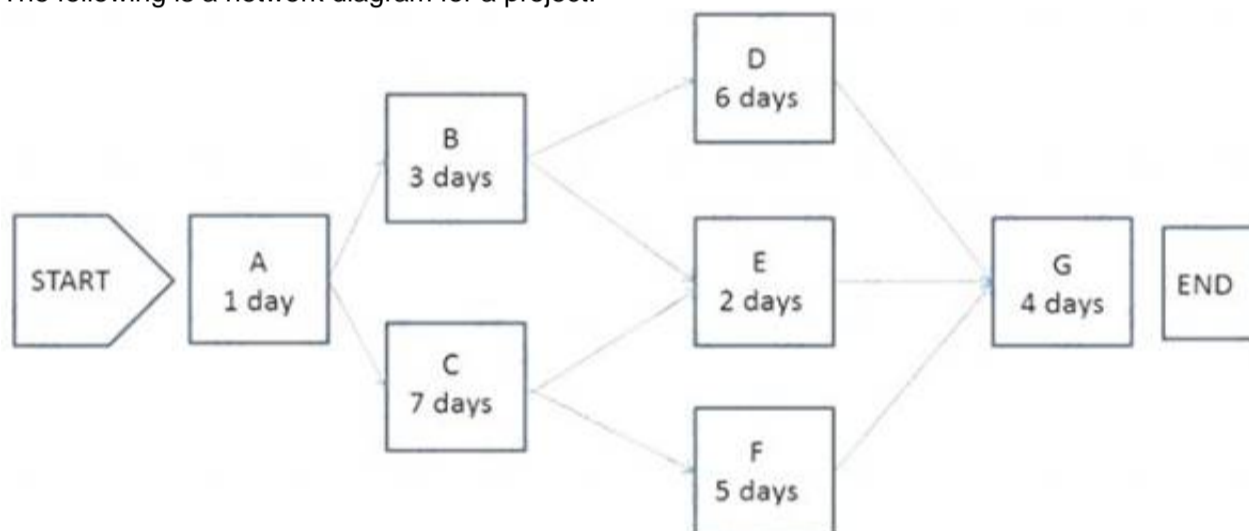
- A. 4
- B. 5
- C. 10
- D. 11

Answer: A

NEW QUESTION 348

- (Exam Topic 2)

The following is a network diagram for a project.



What is the critical path for the project?

- A. A-B-D-G
- B. A-B-E-G
- C. A-C-F-G
- D. A-C-E-G

Answer: C

NEW QUESTION 352

- (Exam Topic 2)

In the Define Activities process, the schedule management plan is used to:

- A. Capture the lessons learned from other projects for comparison.
- B. Contain the standard activity list.
- C. Document and support the project change requests.
- D. Prescribe the level of detail needed to manage the work.

Answer: D

NEW QUESTION 353

- (Exam Topic 2)

Stakeholders can be identified in later stages of the project because the Identify Stakeholders process should be:

- A. Continuous
- B. Discrete
- C. Regulated
- D. Arbitrary

Answer: A

NEW QUESTION 356

- (Exam Topic 2)

An input to the Perform Integrated Change Control process is:

- A. expert judgment
- B. seller proposals
- C. the project charter
- D. the project management plan

Answer: D

NEW QUESTION 359

- (Exam Topic 2)

The component of the human resource management plan that includes ways in which team members can obtain certifications that support their ability to benefit the project is known as:

- A. recognition and rewards
- B. compliance
- C. staff acquisition
- D. training needs

Answer: D

NEW QUESTION 363

- (Exam Topic 2)

Plan Communications Management develops an approach and plan for project communications based on stakeholders' needs and requirements and:

- A. Available organizational assets
- B. Project staff assignments
- C. Interpersonal skills
- D. Enterprise environmental factors

Answer: A

NEW QUESTION 366

- (Exam Topic 2)

The cost baseline and project funding requirements are outputs of which process in Project Cost Management?

- A. Estimate Costs
- B. Control Costs
- C. Plan Cost Management
- D. Determine Budget

Answer: D

NEW QUESTION 369

- (Exam Topic 2)

Which schedule method allows the project team to place buffers on the project schedule path to account for limited resources and project uncertainties?

- A. Critical path method
- B. Critical chain method
- C. Resource leveling
- D. Schedule network analysis

Answer: B

NEW QUESTION 374

- (Exam Topic 2)

Which tool or technique is required in order to determine the project budget?

- A. Cost of quality
- B. Historical relationships
- C. Project management software
- D. Forecasting

Answer: B

NEW QUESTION 378

- (Exam Topic 2)

Project deliverables that have been completed and checked for correctness through the Control Quality process are known as:

- A. Verified deliverables.
- B. Validated deliverables.

- C. Acceptance criteria.
- D. Activity resource requirements.

Answer: A

NEW QUESTION 382

- (Exam Topic 2)

Which tools or techniques are used during the Close Project or Phase process?

- A. Reserve analysis and expert judgment
- B. Facilitation techniques and meetings
- C. Expert judgment and analytical techniques
- D. Performance reviews and meetings

Answer: C

NEW QUESTION 384

- (Exam Topic 2)

The following chart contains information about the tasks in a project.

Task	PV	AC	EV
1	10,000	10,000	10,000
2	10,000	8,000	10,000
3	10,000	8,000	8,000
4	9,000	12,000	10,000
5	10,000	12,000	12,000
6	10,000	10,000	12,000
7	12,000	12,000	10,000
8	10,000	8,000	9,000
9	12,000	10,000	11,000

Based on the chart, what is the cost performance index (CPI) for Task 2?

- A. 0.8
- B. 1
- C. 1.25
- D. 1.8

Answer: C

NEW QUESTION 388

- (Exam Topic 2)

Which stakeholder approves a project's result?

- A. Customer
- B. Sponsor
- C. Seller
- D. Functional manager

Answer: A

NEW QUESTION 391

- (Exam Topic 2)

Which basic quality tool explains a change in the dependent variable in relationship to a change observed in the corresponding independent variable?

- A. Cause-and-effect diagram
- B. Histogram
- C. Control chart
- D. Scatter diagram

Answer: D

NEW QUESTION 393

- (Exam Topic 2)

Which quality tool incorporates the upper and lower specification limits allowed within an agreement?

- A. Control chart
- B. Flowchart

- C. Checksheet
- D. Pareto diagram

Answer: A

NEW QUESTION 398

- (Exam Topic 2)

Which enterprise environmental factors may influence Plan Schedule Management?

- A. Cultural views regarding time schedules and professional and ethical behaviors
- B. Historical information and change control procedures
- C. Risk control procedures and the probability and impact matrix
- D. Resource availability and organizational culture and structure

Answer: D

NEW QUESTION 399

- (Exam Topic 2)

A special type of bar chart used in sensitivity analysis for comparing the relative importance of the variables is called a:

- A. triangular distribution
- B. tornado diagram
- C. beta distribution
- D. fishbone diagram

Answer: B

NEW QUESTION 402

- (Exam Topic 2)

Which item is a cost of conformance?

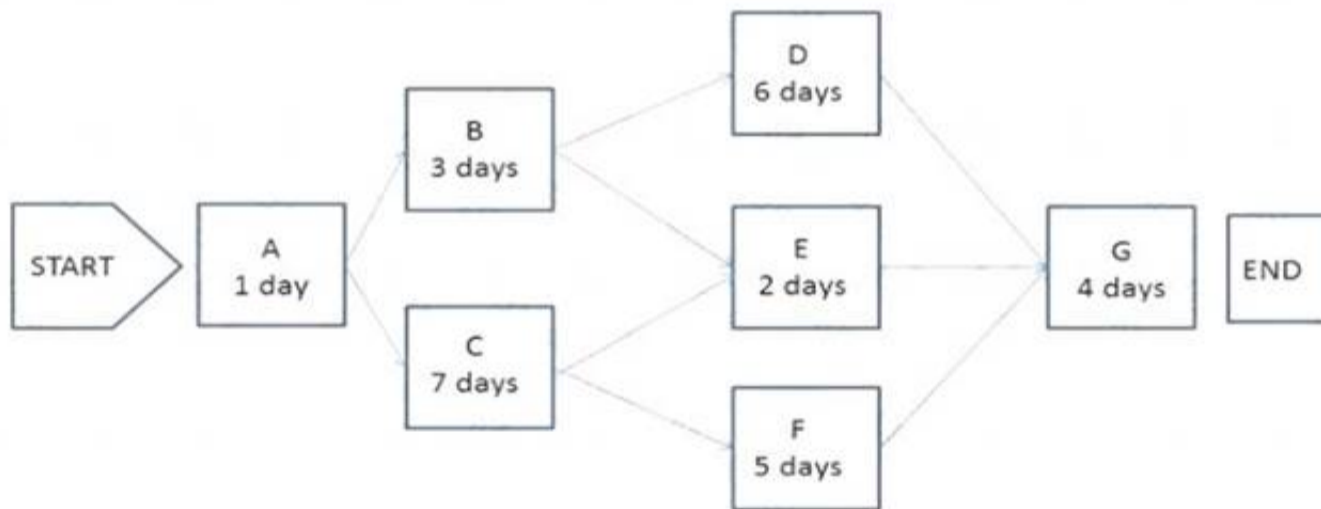
- A. Training
- B. Liabilities
- C. Lost business
- D. Scrap

Answer: A

NEW QUESTION 403

- (Exam Topic 2)

The following is a network diagram for a project.



The shortest non-critical path for the project is how many days in duration?

- A. 10
- B. 12
- C. 14
- D. 16

Answer: A

NEW QUESTION 405

- (Exam Topic 2)

When the business objectives of an organization change, project goals need to be:

- A. realigned.
- B. performed.
- C. improved.
- D. controlled.

Answer: A

NEW QUESTION 409

- (Exam Topic 1)

Which item is an output of Plan Quality Management and an input to Perform Quality Assurance?

- A. Organizational process updates
- B. Quality metrics
- C. Change requests
- D. Quality control measurements

Answer: B

NEW QUESTION 414

- (Exam Topic 1)

The number of potential communication channels for a project with 5 stakeholders is:

- A. 10.
- B. 12.
- C. 20.
- D. 24.

Answer: A

NEW QUESTION 415

- (Exam Topic 1)

The process of identifying and documenting project roles, responsibilities, required skills, and reporting relationships and creating a staffing management plan is known as:

- A. Develop Project Team.
- B. Manage Project Team.
- C. Acquire Project Team.
- D. Plan Human Resource Management.

Answer: D

NEW QUESTION 416

- (Exam Topic 1)

Risk categorization is a tool or technique used in which process?

- A. Plan Risk Responses
- B. Plan Risk Management
- C. Perform Qualitative Risk Analysis
- D. Perform Quantitative Risk Analysis

Answer: C

NEW QUESTION 419

- (Exam Topic 1)

What is the schedule performance index (SPI) if the planned value (PV) is \$100, the actual cost (AC) is \$150, and the earned value (EV) is \$50?

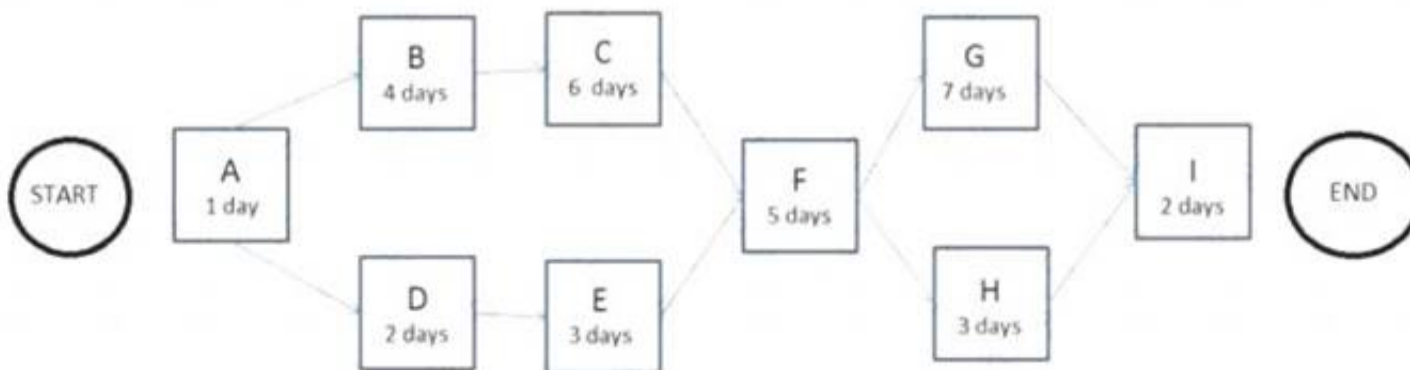
- A. 0.50
- B. 0.67
- C. 1.50
- D. 2.00

Answer: A

NEW QUESTION 424

- (Exam Topic 2)

The following is a network diagram for a project.



What is the critical path for the project?

- A. A-B-C-F-G-I
- B. A-B-C-F-H-I
- C. A-D-E-F-G-I
- D. A-D-E-F-H-I

Answer: A

NEW QUESTION 426

- (Exam Topic 1)

A key benefit of the Manage Communications process is that it enables:

- A. The best use of communication methods.
- B. An efficient and effective communication flow.
- C. Project costs to be reduced.
- D. The best use of communication technology.

Answer: B

NEW QUESTION 429

- (Exam Topic 1)

Status of deliverables, implementation status for change requests, and forecasted estimates to complete are examples of:

- A. Earned value management.
- B. Enterprise environmental factors.
- C. Organizational process assets.
- D. Work performance information.

Answer: D

NEW QUESTION 434

- (Exam Topic 1)

An output of the Plan Quality Management process is:

- A. A process improvement plan,
- B. Quality control measurements.
- C. Work performance information,
- D. The project management plan.

Answer: A

NEW QUESTION 435

- (Exam Topic 1)

The iterative and interactive nature of the Process Groups creates the need for the processes in which Knowledge Area?

- A. Project Communications Management
- B. Project Integration Management
- C. Project Risk Management
- D. Project Scope Management

Answer: B

NEW QUESTION 437

- (Exam Topic 1)

A tool or technique used in the Control Procurements process is:

- A. Expert judgment.
- B. Performance reporting.
- C. Bidder conferences.
- D. Reserve analysis.

Answer: B

NEW QUESTION 441

- (Exam Topic 1)

Which tool or technique is used to develop the human resource management plan?

- A. Ground rules
- B. Expert judgment
- C. Team-building activities
- D. Interpersonal skills

Answer: B

NEW QUESTION 446

- (Exam Topic 1)

An input to the Manage Project Team process is:

- A. Work performance reports.
- B. Change requests.
- C. Activity resource requirements.

D. Enterprise environmental factors.

Answer: A

NEW QUESTION 448

- (Exam Topic 1)

Which item is an example of personnel assessment?

- A. Resource calendar
- B. Tight matrix
- C. Team-building activity
- D. Focus group

Answer: D

NEW QUESTION 452

- (Exam Topic 1)

Identify Risks is part of which Process Group?

- A. Planning
- B. Executing
- C. Closing
- D. Initiating

Answer: A

NEW QUESTION 457

- (Exam Topic 1)

The definition of when and how often the risk management processes will be performed throughout the project life cycle is included in which risk management plan component?

- A. Timing
- B. Methodology
- C. Risk categories
- D. Budgeting

Answer: A

NEW QUESTION 461

- (Exam Topic 1)

An effective technique for resolving conflict that incorporates multiple viewpoints from differing perspectives to achieve consensus and commitment is:

- A. smooth/accommodate.
- B. force/direct,
- C. collaborate/problem solve,
- D. compromise/reconcile.

Answer: C

NEW QUESTION 466

- (Exam Topic 1)

Which tool or technique of the Define Activities process allows for work to exist at various levels of detail depending on where it is in the project life cycle?

- A. Historical relationships
- B. Dependency determination
- C. Bottom-up estimating
- D. Rolling wave planning

Answer: D

NEW QUESTION 468

- (Exam Topic 1)

A logical relationship in which a successor activity cannot start until a predecessor activity has finished is known as:

- A. Start-to-start (SS).
- B. Start-to-finish (SF).
- C. Finish-to-start (FS).
- D. Finish-to-finish (FF).

Answer: C

NEW QUESTION 472

- (Exam Topic 1)

Which Define Activities output extends the description of the activity by identifying the multiple components associated with each activity?

- A. Project document updates
- B. Activity list
- C. Activity attributes
- D. Project calendars

Answer: C

NEW QUESTION 475

- (Exam Topic 1)

Which item is an input to the Define Activities process?

- A. Schedule data
- B. Activity list
- C. Risk register
- D. Scope baseline

Answer: D

NEW QUESTION 477

- (Exam Topic 1)

Which grid shows which resources are tied to work packages?

- A. Work breakdown structure (WBS)
- B. Responsibility assignment matrix (RAM)
- C. Project assignment chart
- D. Personnel assignment matrix

Answer: B

NEW QUESTION 482

- (Exam Topic 1)

Market conditions and published commercial information are examples of which input to the Estimate Costs process?

- A. Scope baseline
- B. Organizational process assets
- C. Enterprise environmental factors
- D. Risk register

Answer: C

NEW QUESTION 483

- (Exam Topic 1)

Which input to the Identify Stakeholders process provides information about internal or external parties related to the project?

- A. Procurement documents
- B. Communications plan
- C. Project charter
- D. Stakeholder register

Answer: C

NEW QUESTION 487

- (Exam Topic 1)

Reserve analysis is a tool and technique used in which process?

- A. Plan Risk Management
- B. Plan Risk Responses
- C. Identify Risks
- D. Control Risks

Answer: D

NEW QUESTION 488

- (Exam Topic 1)

During which process does a project manager review all prior information to ensure that all project work is completed and that the project has met its objectives?

- A. Monitor and Control Project Work
- B. Perform Quality Assurance
- C. Close Project or Phase
- D. Control Scope

Answer: C

NEW QUESTION 490

- (Exam Topic 1)

Which process identifies whether the needs of a project can best be met by acquiring products, services, or results outside of the organization?

- A. Plan Procurement Management
- B. Control Procurements
- C. Collect Requirements
- D. Plan Cost Management

Answer: A

NEW QUESTION 491

- (Exam Topic 1)

Lessons learned are created and project resources are released in which Process Group?

- A. Planning
- B. Executing
- C. Closing
- D. Initiating

Answer: C

NEW QUESTION 493

- (Exam Topic 1)

Which document describes the necessary information to determine if a project is worth the required investment?

- A. Cost baseline
- B. Service level agreement
- C. Memorandum of understanding
- D. Business case

Answer: D

NEW QUESTION 496

- (Exam Topic 1)

The organization's perceived balance between risk taking and risk avoidance is reflected in the risk:

- A. Responses
- B. Appetite
- C. Tolerance
- D. Attitude

Answer: A

NEW QUESTION 497

- (Exam Topic 1)

The planned work contained in the lowest level of work breakdown structure (WBS) components is known as:

- A. Work packages.
- B. Accepted deliverables.
- C. The WBS dictionary.
- D. The scope baseline.

Answer: A

NEW QUESTION 502

- (Exam Topic 1)

Which process determines the risks that may affect the project and documents their characteristics?

- A. Control Risks
- B. Plan Risk Management
- C. Plan Risk Responses
- D. Identify Risks

Answer: D

NEW QUESTION 504

- (Exam Topic 1)

The iterative process of increasing the level of detail in a project management plan as greater amounts of information become available is known as:

- A. Continuous improvement.
- B. Predictive planning.
- C. Progressive elaboration.
- D. Quality assurance.

Answer: C

NEW QUESTION 509

- (Exam Topic 1)

Change requests are processed for review and disposition according to which process?

- A. Control Quality
- B. Control Scope
- C. Monitor and Control Project Work
- D. Perform Integrated Change Control

Answer: D

NEW QUESTION 513

- (Exam Topic 1)

What are the Project Procurement Management processes?

- A. Conduct Procurements, Control Procurements, Integrate Procurements, and Close Procurements
- B. Estimate Procurements, Integrate Procurements, Control Procurements, and Validate Procurements
- C. Plan Procurement Management, Conduct Procurements, Control Procurements, and Close Procurements
- D. Plan Procurement Management, Perform Procurements, Control Procurements, and Validate Procurements

Answer: C

NEW QUESTION 515

- (Exam Topic 1)

Which tool or technique is effective in a project in which the deliverable is not a service or result?

- A. Inspection
- B. Variance analysis
- C. Decomposition
- D. Product analysis

Answer: D

NEW QUESTION 520

- (Exam Topic 1)

Which input to the Manage Stakeholder Engagement process provides guidance on how stakeholders can best be involved in a project?

- A. Feedback analysis
- B. Stakeholder analysis
- C. Communication management plan
- D. Stakeholder management plan

Answer: D

NEW QUESTION 525

- (Exam Topic 1)

Which input to the Plan Risk Management process provides information on high-level risks?

- A. Project charter
- B. Enterprise environmental factors
- C. Stakeholder register
- D. Organizational process assets

Answer: A

NEW QUESTION 528

- (Exam Topic 1)

Which input to Collect Requirements is used to identify stakeholders who can provide information on requirements?

- A. Stakeholder register
- B. Scope management plan
- C. Stakeholder management plan
- D. Project charter

Answer: A

NEW QUESTION 532

- (Exam Topic 1)

Which Knowledge Areas include processes from the Closing Process Group?

- A. Project Quality Management and Project Time Management
- B. Project Scope Management and Project Risk Management
- C. Project Stakeholder Management and Project Cost Management
- D. Project Integration Management and Project Procurement Management

Answer: D

NEW QUESTION 533

- (Exam Topic 1)

An input to the Identify Stakeholders process is:

- A. The project management plan.
- B. The stakeholder register.
- C. Procurement documents.
- D. Stakeholder analysis.

Answer: C

NEW QUESTION 534

- (Exam Topic 1)

The ability to influence cost is greatest during which stages of the project?

- A. Early
- B. Middle
- C. Late
- D. Completion

Answer: A

NEW QUESTION 539

- (Exam Topic 1)

A project in which the scope, time, and cost of delivery are determined as early as possible is following a life cycle that is:

- A. Adaptive
- B. Predictive
- C. Incremental
- D. Iterative

Answer: B

NEW QUESTION 541

- (Exam Topic 1)

A temporary endeavor that creates a unique product or service is called a:

- A. Project
- B. Plan
- C. Program
- D. Portfolio

Answer: A

NEW QUESTION 544

- (Exam Topic 1)

Which tool or technique is an examination of industry and specific vendor capabilities?

- A. Independent estimates
- B. Market research
- C. Analytical techniques
- D. Bidder conferences

Answer: B

NEW QUESTION 547

- (Exam Topic 1)

An output of the Validate Scope process is:

- A. A requirements traceability matrix.
- B. The scope management plan.
- C. Work performance reports.
- D. Change requests.

Answer: D

NEW QUESTION 552

- (Exam Topic 1)

A risk response strategy in which the project team shifts the impact of a threat, together with ownership of the response, to a third party is called:

- A. mitigate
- B. accept
- C. transfer
- D. avoid

Answer: C

NEW QUESTION 556

- (Exam Topic 1)

Typical outcomes of a project include:

- A. Products, services, and improvements.
- B. Products, programs, and services.
- C. Improvements, portfolios, and services.
- D. Improvements, processes, and products.

Answer: A

NEW QUESTION 561

- (Exam Topic 1)

Which process involves developing an approximation of the monetary resources needed to complete project activities?

- A. Estimate Costs
- B. Control Costs
- C. Determine Budget
- D. Plan Cost Management

Answer: A

NEW QUESTION 562

- (Exam Topic 1)

Which cost is associated with nonconformance?

- A. Liabilities
- B. Inspections
- C. Training
- D. Equipment

Answer: A

NEW QUESTION 567

- (Exam Topic 1)

When does the project team determine which dependencies are discretionary?

- A. Before the Define Activities process
- B. During the Define Activities process
- C. Before the Sequence Activities process
- D. During the Sequence Activities process

Answer: D

NEW QUESTION 571

- (Exam Topic 1)

A project manager should document the escalation path for unresolved project risks in the:

- A. Change control plan
- B. Stakeholder register
- C. Risk log
- D. Communications management plan

Answer: D

NEW QUESTION 573

- (Exam Topic 1)

An output of the Develop Project Team process is:

- A. Organizational process assets.
- B. Enterprise environmental factors updates.
- C. Project staff assignments.
- D. Organizational charts and position descriptions.

Answer: B

NEW QUESTION 576

- (Exam Topic 1)

An input to Develop Project Charter is a/an:

- A. Business case.
- B. Activity list.
- C. Project management plan.
- D. Cost forecast.

Answer:

A

NEW QUESTION 577

- (Exam Topic 1)

A method of obtaining early feedback on requirements by providing a working model of the expected product before actually building is known as:

- A. Benchmarking.
- B. Context diagrams.
- C. Brainstorming.
- D. Prototyping.

Answer: D

NEW QUESTION 580

- (Exam Topic 1)

Which tool or technique allows a large number of ideas to be classified into groups for review and analysis?

- A. Nominal group technique
- B. Idea/mind mapping
- C. Affinity diagram
- D. Brainstorming

Answer: C

NEW QUESTION 583

- (Exam Topic 1)

Payback period, return on investment, internal rate of return, discounted cash flow, and net present value are all examples of:

- A. Expert judgment.
- B. Analytical techniques.
- C. Earned value management.
- D. Group decision-making techniques.

Answer: B

NEW QUESTION 586

- (Exam Topic 1)

The process of confirming human resource availability and obtaining the team necessary to complete project activities is known as:

- A. Plan Human Resource Management.
- B. Acquire Project Team.
- C. Manage Project Team.
- D. Develop Project Team.

Answer: B

NEW QUESTION 589

- (Exam Topic 1)

Which process numerically analyzes the effect of identified risks on overall project objectives?

- A. Plan Risk Management
- B. Plan Risk Responses
- C. Perform Quantitative Risk Analysis
- D. Perform Qualitative Risk Analysis

Answer: C

NEW QUESTION 590

- (Exam Topic 1)

Which tools or techniques are used in the Plan Schedule Management process?

- A. Benchmarking, expert judgment, and analytical techniques
- B. Statistical sampling, benchmarking, and meetings
- C. Negotiations, pre-assignment, and multi-criteria decision analysis
- D. Expert judgment, analytical techniques, and meetings

Answer: D

NEW QUESTION 593

- (Exam Topic 1)

Which basic quality tool is most useful when gathering attributes data in an inspection to identify defects?

- A. Control charts
- B. Pareto diagrams
- C. Ishikavva diagrams
- D. Checksheets

Answer: D

NEW QUESTION 594

- (Exam Topic 1)

An output of the Direct and Manage Project Work process is:

- A. Deliverables.
- B. Activity lists.
- C. A work breakdown structure.
- D. A scope statement.

Answer: A

NEW QUESTION 598

- (Exam Topic 1)

Scope, schedule, and cost parameters are integrated in the:

- A. Performance measurement baseline.
- B. Analysis of project forecasts,
- C. Summary of changes approved in a period,
- D. Analysis of past performance.

Answer: A

NEW QUESTION 601

- (Exam Topic 1)

When alternative dispute resolution (ADR) is necessary, which tool or technique should be utilized?

- A. Interactive communication
- B. Claims administration
- C. Conflict management
- D. Performance reporting

Answer: B

NEW QUESTION 605

- (Exam Topic 1)

The business needs, assumptions, and constraints and the understanding of the customers needs and high-level requirements are documented in the:

- A. Project management plan.
- B. Project charter.
- C. Work breakdown structure.
- D. Stakeholder register.

Answer: B

NEW QUESTION 607

- (Exam Topic 1)

Sending letters, memos, reports, emails, and faxes to share information is an example of which type of communication?

- A. Direct
- B. Interactive
- C. Pull
- D. Push

Answer: D

NEW QUESTION 610

- (Exam Topic 1)

When a backward pass is calculated from a schedule constraint that is later than the early finish date that has been calculated during a forward pass calculation, this causes which type of total float?

- A. Negative
- B. Zero
- C. Positive
- D. Free

Answer: C

NEW QUESTION 612

- (Exam Topic 1)

An input to Close Project or Phase is:

- A. Accepted deliverables,
- B. Final products or services,

- C. Document updates,
- D. Work performance information.

Answer: A

NEW QUESTION 614

- (Exam Topic 1)

Which document defines how a project is executed, monitored and controlled, and closed?

- A. Strategic plan
- B. Project charter
- C. Project management plan
- D. Service level agreement

Answer: C

NEW QUESTION 616

- (Exam Topic 1)

An example of a group decision-making technique is:

- A. Nominal group technique.
- B. Majority.
- C. Affinity diagram.
- D. Multi-criteria decision analysis.

Answer: B

NEW QUESTION 621

- (Exam Topic 1)

Processes in the Planning Process Group are typically carried out during which part of the project life cycle?

- A. Only once, at the beginning
- B. At the beginning and the end
- C. Once during each phase
- D. Repeatedly

Answer: D

NEW QUESTION 624

- (Exam Topic 6)

What are the objectives of Initiation processes?

- A. Initiation processes are performed in order to develop the project charter and identify stakeholders.
- B. Initiation processes are performed in order to obtain budget approval for a project or phase and approve scope with customers.
- C. Initiation processes are performed to identify business objectives for a project or phase and identify stakeholders' goals.
- D. Initiation processes are performed to map initial requirements for a project or phase and prioritize them with stakeholders.

Answer: D

NEW QUESTION 625

- (Exam Topic 6)

Which format can a network diagram take?

- A. Flow chart
- B. Control chart
- C. Affinity diagram
- D. Cause-and-effect diagram

Answer: A

NEW QUESTION 627

- (Exam Topic 6)

The features and functions that characterize a result, product, or service can refer to:

- A. project scope
- B. product scope
- C. service scope
- D. product breakdown structure

Answer: B

NEW QUESTION 628

- (Exam Topic 6)

What type of change requires the submission of a change request?

- A. Changes in assigned resources
- B. Changes in a technical solution
- C. Changes in status reporting
- D. Changes in the project's scope

Answer: D

NEW QUESTION 629

- (Exam Topic 6)

Which group of inputs will a project manager use during the Monitor Stakeholder Engagement process?

- A. Project charter, business documents, and project management plan
- B. Agreements, scope baseline, and project management plan
- C. Project charter, business case, and project management plan
- D. Work performance data, enterprise environmental factors, and project management plan

Answer: D

NEW QUESTION 632

- (Exam Topic 6)

Which tasks should a project manager accomplish in order to manage project scope correctly?

- A. Defin
- B. Validate, and Control Scop
- C. Control Schedule; Control Costs and Manage Stakeholder Engagement
- D. Collect Requirement
- E. Define Scop
- F. Create WB
- G. Develop Schedule, and Manage Stakeholder Engagement
- H. Plan Scope Management; Collect Requirements; Defin
- I. Validate, and Control Scope; and Create WBS
- J. Defin
- K. Validate, and Control Scop
- L. Control Cost
- M. Manage Stakeholder Engagement, and keep budget under control

Answer: C

NEW QUESTION 636

- (Exam Topic 6)

What should a project manager use to determine how much money is needed to complete a project?

- A. Earned value management (EVM)
- B. Estimate at completion (EAC)
- C. Earned value analysis (EVA)
- D. Budget at completion (BAG)

Answer: B

NEW QUESTION 638

- (Exam Topic 6)

Match the influence with its corresponding category of influence.

Influences		Categories of Influence
Marketplace conditions and industry standards		External EEFs
Policies and procedures		Internal enterprise environmental factors (EEFs)
Knowledge bases and lessons learned		Updated OPAs
Resource skills and availability		Non-updated organizational process assets (OPAs)

- A. Mastered
- B. Not Mastered

Answer: A

Explanation:



NEW QUESTION 640

- (Exam Topic 6)

Which is the tool or technique that is used to obtain the list of activities from the work packages?

- A. Data analysis
- B. Leads and lags
- C. Precedence diagramming method
- D. Decomposition

Answer: D

NEW QUESTION 644

- (Exam Topic 6)

A project manager is addressing risks and potential concerns related to stakeholder management, and is clarifying and resolving previously identified issues. In which process is the project manager engaged?

- A. Identify Stakeholders
- B. Plan Stakeholder Engagement
- C. Manage Stakeholder Engagement
- D. Monitor Stakeholder Engagement

Answer: B

NEW QUESTION 645

- (Exam Topic 6)

Which of the following set of elements is part of an effective communications management plan?

- A. Escalation processes, person responsible for communicating the information, glossary of common terminology, methods or technologies used to convey the information
- B. Phone book directory, stakeholder communication requirements, project charter, glossary of common terminology
- C. Organizational chart, escalation processes, person responsible for communicating the information, project management plan, glossary of common terminology
- D. Glossary of common terminology, constraints derived from specific legislation and regulation, person responsible for communicating information, project management plan, resource management plan

Answer: A

NEW QUESTION 647

- (Exam Topic 6)

Which of the following documents are created as part of Project Integration Management?

- A. Project charter and project management plan
- B. Communications management plan and scope management plan
- C. Quality management plan and risk management plan
- D. Project scope statement and communications management plan

Answer: A

NEW QUESTION 649

- (Exam Topic 5)

Which risk response strategy is common for both positive and negative risks?

- A. Share
- B. Accept
- C. Mitigate
- D. Transfer

Answer: B

NEW QUESTION 650

- (Exam Topic 6)

A project manager is reviewing the change requests for project documents, deliverables, and the project plan. In which project management process does this

review belong?

- A. Monitor and Control Project Work
- B. Direct and Manage Project Work
- C. Close Project or Phase
- D. Perform Integrated Change Control

Answer: D

NEW QUESTION 655

- (Exam Topic 6)

Which conflict resolution technique produces the most lasting results?

- A. Withdraw/avoid
- B. Smooth/accommodate
- C. Compromise/reconcile
- D. Collaborate/problem solve

Answer: C

NEW QUESTION 660

- (Exam Topic 6)

A project manager is assigned to a strategic project Senior management asks the project manager to give a presentation in order to request support that will ensure the success of the project.

Which entities will the project manager attempt to influence?

- A. The project and the organization
- B. The organization and the industry
- C. The subject matter experts and the project
- D. The change control board and the organization

Answer: D

NEW QUESTION 665

- (Exam Topic 5)

The correct equation for schedule variance (SV) is earned value:

- A. minus planned value [EV - PV].
- B. minus actual cost [EV - AC].
- C. divided by planned value [EV/PV],
- D. divided by actual cost [EV/AC].

Answer: A

NEW QUESTION 667

- (Exam Topic 5)

Using the three-point estimating technique, if the most likely duration is four months, the optimistic duration is two months, and the pessimistic duration is one year, how many months is the expected activity duration?

- A. Two
- B. Four
- C. Five
- D. Twelve

Answer: C

NEW QUESTION 669

- (Exam Topic 5)

Which of the following are an enterprise environmental factor that can influence the Identify Risks process?

- A. Work performance reports
- B. Assumptions logs
- C. Network diagrams
- D. Academic studies

Answer: D

NEW QUESTION 674

- (Exam Topic 5)

Which of the following is an output of Define Scope?

- A. Project scope statement
- B. Project charter
- C. Project plan
- D. Project schedule

Answer: A

NEW QUESTION 678

- (Exam Topic 5)

Which tool or technique can a project manager use to select in advance a team member who will be crucial to the task?

- A. Acquisition
- B. Negotiation
- C. Virtual team
- D. Pre-assignment

Answer: D

NEW QUESTION 681

- (Exam Topic 5)

Which of the following change requests can bring expected future performance of the project work in line with the project management plan?

- A. Corrective action
- B. Defect repair
- C. Preventative action
- D. Probable action

Answer: A

NEW QUESTION 684

- (Exam Topic 5)

Which of the following is a tool and technique used to monitor risk?

- A. Technical performance measurement
- B. Cost performance baseline
- C. Benchmarking
- D. Cost of quality

Answer: A

NEW QUESTION 688

- (Exam Topic 5)

Which type of diagram includes groups of information and shows relationships between factors, causes, and objectives?

- A. Affinity
- B. Scatter
- C. Fishbone
- D. Matrix

Answer: D

NEW QUESTION 693

- (Exam Topic 5)

Which of the following is an input to Direct and Manage Project Execution?

- A. Performance reports
- B. Project charter
- C. Outputs from planning processes
- D. Enterprise environmental factors

Answer: D

NEW QUESTION 698

- (Exam Topic 5)

The risk shared between the buyer and seller is determined by the:

- A. assumption log.
- B. quality checklist.
- C. risk register.
- D. contract type.

Answer: D

NEW QUESTION 702

- (Exam Topic 5)

Prototype development may be used as a tool for which of the following risk response strategies?

- A. Avoid
- B. Accept
- C. Mitigate
- D. Exploit

Answer:

C

NEW QUESTION 705

- (Exam Topic 5)

Identify Stakeholders is the process of identifying all of the people or organizations impacted by the project and documenting relevant information regarding their interests in, involvement in, and impact on the project:

- A. manager.
- B. success.
- C. deadline.
- D. scope.

Answer: B

NEW QUESTION 706

- (Exam Topic 5)

A tool and technique used during the Collect Requirements process is:

- A. prototypes.
- B. expert judgment.
- C. alternatives identification.
- D. product analysis.

Answer: A

NEW QUESTION 708

- (Exam Topic 5)

The process for performing variance analysis may vary, depending on:

- A. scenario building, technology forecasting, and forecast by analogy.
- B. working relationships among various stakeholders and team members.
- C. application area, the standard used, and the industry,
- D. work to be completed next.

Answer: C

NEW QUESTION 709

- (Exam Topic 5)

Which of the following is an output of Close Procurements?

- A. Accepted deliverables
- B. Organizational process assets updates
- C. Managing stakeholder expectations
- D. Performance reports

Answer: B

NEW QUESTION 714

- (Exam Topic 5)

Plan-do-check-act is also known as:

- A. prevention over inspection.
- B. statistical sampling.
- C. management responsibility,
- D. continuous improvement.

Answer: D

NEW QUESTION 715

- (Exam Topic 5)

During project selection, which factor is most important?

- A. Types of constraints
- B. Internal business needs
- C. Budget
- D. Schedule

Answer: B

NEW QUESTION 717

- (Exam Topic 5)

The processes required to establish the scope of the project, refine the objectives, and define the course of action required to attain the objectives that the project has been undertaken to achieve are grouped within which Process Group?

- A. Initiating
- B. Planning

- C. Executing
- D. Monitoring and Controlling

Answer: B

NEW QUESTION 719

- (Exam Topic 5)

Which characteristics do effective project managers possess?

- A. Project management knowledge, performance skills, and personal effectiveness
- B. Preparedness, project management knowledge, and personality characteristics
- C. General management, preparedness, and project management knowledge
- D. Assertiveness, collaboration, and performance skills

Answer: A

NEW QUESTION 724

- (Exam Topic 5)

Inputs to the Plan Risk Management process include the:

- A. cost management plan.
- B. risk management plan,
- C. activity list,
- D. risk register.

Answer: A

NEW QUESTION 727

- (Exam Topic 5)

A project lifecycle is defined as:

- A. a collection of generally sequential and sometimes overlapping project phases.
- B. a process required to ensure that the project includes all the work required, and only the work required, to complete the project successfully.
- C. a recognized standard for the project management profession.
- D. the application of knowledge, skills, tools, and techniques to project activities to meet the project requirements.

Answer: A

NEW QUESTION 728

- (Exam Topic 5)

An input of the Create WBS process is:

- A. requirements documentation.
- B. scope baseline.
- C. project charter.
- D. validated deliverables.

Answer: A

NEW QUESTION 732

- (Exam Topic 5)

Who determines which dependencies are mandatory during the Sequence Activities process?

- A. Project manager
- B. External stakeholders
- C. Internal stakeholders
- D. Project team

Answer: D

NEW QUESTION 734

- (Exam Topic 5)

Which baselines make up the performance measurement baseline?

- A. Scope baseline, cost baseline, and schedule baseline
- B. Scope baseline, project management baseline, and quality baseline
- C. Cost baseline, schedule baseline, and risk baseline
- D. Cost baseline, project management baseline, and schedule baseline

Answer: A

NEW QUESTION 739

- (Exam Topic 5)

Which is an output of the Collect Requirements process?

- A. Requirements traceability matrix
- B. Project scope statement
- C. WBS dictionary
- D. Work performance measurements

Answer: A

NEW QUESTION 741

- (Exam Topic 5)

A project manager has created an issue log to document issues communicated by project team members during weekly team meetings. This is an input of:

- A. Manage Stakeholder Expectations.
- B. Monitor and Control Risks.
- C. Plan Risk Management.
- D. Report Performance.

Answer: A

NEW QUESTION 744

- (Exam Topic 5)

The application of knowledge, skills, tools, and techniques to project activities to meet project requirements describes management of which of the following?

- A. Project
- B. Scope
- C. Contract
- D. Program

Answer: A

NEW QUESTION 745

- (Exam Topic 5)

The project has a current cost performance index of 0.80. Assuming this performance will continue, the new estimate at completion is \$1000. What was the original budget at completion for the project?

- A. \$800
- B. \$1000
- C. \$1250
- D. \$1800

Answer: A

NEW QUESTION 746

- (Exam Topic 5)

The probability and impact matrix is primarily used to:

- A. Quantify risk issues for trends during a quality audit.
- B. Develop a risk register for risk planning.
- C. Evaluate each risk's importance and priority during Perform Qualitative Risk Analysis.
- D. Define risk and compare impacts during Perform Quantitative Risk Analysis.

Answer: C

NEW QUESTION 750

- (Exam Topic 5)

The technique of subdividing project deliverables into smaller, more manageable components until the work and deliverables are defined to the work package level is called:

- A. a control chart.
- B. baseline.
- C. Create WBS.
- D. decomposition.

Answer: D

NEW QUESTION 754

- (Exam Topic 5)

While preparing the project management plan on a weekly basis, the project manager indicates the intention to provide an issues report to the staff via e-mail. In which part of the plan will this type of information be included?

- A. Communications management plan
- B. Human resource plan
- C. Quality management plan
- D. Procurement management plan

Answer: A

NEW QUESTION 756

- (Exam Topic 5)

After Define Activities and Sequence Activities, the next process is:

- A. Estimate Activity Resources.
- B. Estimate Activity Durations,
- C. Develop Schedule.
- D. Control Schedule.

Answer: A

NEW QUESTION 757

- (Exam Topic 5)

What is project management?

- A. A logical grouping of project management inputs, outputs, tools, and techniques
- B. Applying knowledge, skills, tools, and techniques to project activities to meet the project requirements
- C. Launching a process that can result in the authorization of a new project
- D. A formal, approved document that defines how the project is executed, monitored, and controlled

Answer: B

NEW QUESTION 760

- (Exam Topic 5)

Funding limit reconciliation is a tool and technique used in which process?

- A. Control Costs
- B. Determine Budget
- C. Estimate Costs
- D. Control Budget

Answer: B

NEW QUESTION 763

- (Exam Topic 5)

Which is one of the determining factors used to calculate CPI?

- A. EV
- B. SPI
- C. PV
- D. ETC

Answer: A

NEW QUESTION 766

- (Exam Topic 5)

The initial development of a Project Scope Management plan uses which technique?

- A. Alternatives identification
- B. Scope decomposition
- C. Expert judgment
- D. Product analysis

Answer: C

NEW QUESTION 771

- (Exam Topic 5)

Resource calendars are included in the:

- A. staffing management plan.
- B. work breakdown structure (WBS).
- C. project communications plan.
- D. project charter.

Answer: A

NEW QUESTION 772

- (Exam Topic 5)

Fast tracking is a schedule compression technique used to shorten the project schedule without changing project scope. Which of the following can result from fast tracking?

- A. The risk of achieving the shortened project time is increased.
- B. The critical path will have positive total float.
- C. Contingency reserves are released for redeployment by the project manager.
- D. Duration buffers are added to maintain a focus on planned activity durations.

Answer:

A

NEW QUESTION 773

- (Exam Topic 5)

Which activity may occur at project or phase closure?

- A. Acceptance of deliverables
- B. Change requests
- C. Project management plan updates
- D. Benchmarking

Answer: A

NEW QUESTION 778

- (Exam Topic 5)

The project budget is set at \$150,000. The project duration is planned to be one year. At the completion of Week 16 of the project, the following information is collected: Actual cost = \$50,000, Plan cost = \$45,000, Earned value = \$40,000. What is the cost performance index?

- A. 0.8
- B. 0.89
- C. 1.13
- D. 1.25

Answer: A

NEW QUESTION 780

- (Exam Topic 5)

An input to the Collect Requirements process is the:

- A. stakeholder register.
- B. project management plan.
- C. project scope statement.
- D. requirements management plan.

Answer: A

NEW QUESTION 782

- (Exam Topic 5)

The three processes of Project Cost Management are:

- A. Estimate Costs, Control Schedule, and Control Costs.
- B. Estimate Costs, Determine Budget, and Estimate Activity Resources.
- C. Determine Budget, Control Schedule, and Estimate Activity Resources.
- D. Estimate Costs, Determine Budget, and Control Costs.

Answer: D

NEW QUESTION 785

- (Exam Topic 4)

Which of the following correctly explains the term "progressive elaboration"?

- A. Changing project specifications continuously
- B. Elaborate tracking of the project progress
- C. Elaborate tracking of the project specifications with a change control system
- D. Project specifications becoming more explicit and detailed as the project progresses

Answer: D

NEW QUESTION 789

- (Exam Topic 5)

Activity cost estimates are quantitative assessments of the probable costs required to:

- A. Create WBS.
- B. complete project work.
- C. calculate costs.
- D. Develop Project Management Plan.

Answer: B

NEW QUESTION 792

- (Exam Topic 4)

What causes replanning of the project scope?

- A. Project document updates
- B. Project scope statement changes
- C. Variance analysis

D. Change requests

Answer: D

NEW QUESTION 794

- (Exam Topic 4)

A given schedule activity is most likely to last four weeks. In a best-case scenario, the schedule activity is estimated to last two weeks. In a worst-case scenario, the schedule activity is estimated to last 12 weeks. Given these three estimates, what is the expected duration of the activity?

- A. Three weeks
- B. Four weeks
- C. Five weeks
- D. Six weeks

Answer: C

NEW QUESTION 798

- (Exam Topic 4)

Quality metrics are an output of which process?

- A. Plan Quality
- B. Perform Quality Control
- C. Perform Quality Assurance
- D. Perform Qualitative Risk Analysis

Answer: A

NEW QUESTION 800

- (Exam Topic 4)

What risk technique is used to quantify the probability and impact of risks on project objectives?

- A. Expert judgment
- B. Risk registry
- C. Risk response planning
- D. Interviewing

Answer: D

NEW QUESTION 801

- (Exam Topic 4)

What does a CPI value greater than 1.0 indicate?

- A. Cost right at the estimated value
- B. Cost under the estimated value
- C. Cost right at the actual value
- D. Cost over the estimated value

Answer: B

NEW QUESTION 803

- (Exam Topic 4)

When sequencing activities, what does the common acronym FF stand for?

- A. Fixed Fee
- B. Free Float
- C. Fixed Finish
- D. Finish-to-Finish

Answer: D

NEW QUESTION 808

- (Exam Topic 4)

Which of the following is a conflict resolution technique that emphasizes areas of agreement rather than areas of difference?

- A. Compromising
- B. Collaborating
- C. Smoothing
- D. Problem Solving

Answer: C

NEW QUESTION 810

- (Exam Topic 4)

Which of the following is an input to the Perform Qualitative Risk Analysis process?

- A. Risk register
- B. Risk data quality assessment
- C. Risk categorization
- D. Risk urgency

Answer: A

NEW QUESTION 815

- (Exam Topic 4)

What is the primary benefit of meeting quality requirements?

- A. Quality metrics
- B. Less rework
- C. Quality control measurements
- D. Benchmarking

Answer: B

NEW QUESTION 818

- (Exam Topic 4)

A tool and technique used during the Perform Qualitative Risk Analysis process is:

- A. risk data quality assessment.
- B. variance and trend analysis.
- C. data gathering and representation techniques.
- D. risk audits.

Answer: A

NEW QUESTION 819

- (Exam Topic 4)

Which written document helps monitor who is responsible for resolving specific problems and concerns by a target date?

- A. Project Plan
- B. Responsibility Matrix
- C. Issue Log
- D. Scope Document

Answer: C

NEW QUESTION 823

- (Exam Topic 4)

Which standard has interrelationships to other project management disciplines such as program management and portfolio management?

- A. Program Management Body of Knowledge Guide
- B. The Standard for Program Management
- C. Organizational Project Management Maturity Model (OPM3\$)
- D. Guide to the Project Management Body of Knowledge (PMBOK®)

Answer: D

NEW QUESTION 828

- (Exam Topic 4)

How is the schedule variance calculated using the earned value technique?

- A. EV less AC
- B. AC less PV
- C. EV less PV
- D. AC less EV

Answer: C

NEW QUESTION 830

- (Exam Topic 4)

Which type of management focuses on ensuring that projects and programs are reviewed to prioritize resource allocation?

- A. Project
- B. Functional
- C. Program
- D. Portfolio

Answer: D

NEW QUESTION 831

- (Exam Topic 4)

In the Develop Project Team process, which of the following is identified as a critical factor for a project's success?

- A. Team meetings
- B. Subcontracting teams
- C. Virtual teams
- D. Teamwork

Answer: D

NEW QUESTION 834

- (Exam Topic 4)

The milestone list is an input to which process from the Planning Process Group?

- A. Define Activities
- B. Estimate Activity Durations
- C. Estimate Activity Resources
- D. Sequence Activities

Answer: D

NEW QUESTION 837

- (Exam Topic 4)

An input to the Perform Quantitative Risk Analysis process is the:

- A. quality management plan.
- B. project management plan.
- C. communications management plan.
- D. schedule management plan.

Answer: D

NEW QUESTION 839

- (Exam Topic 4)

Which of the following strategies is used to deal with risks that may have a negative impact on project objectives?

- A. Exploit
- B. Share
- C. Enhance
- D. Transfer

Answer: D

NEW QUESTION 844

- (Exam Topic 4)

What provides information regarding the ways people, teams, and organizational units behave?

- A. Organizational chart
- B. Organizational theory
- C. Organizational structure
- D. Organizational behavior

Answer: B

NEW QUESTION 848

- (Exam Topic 4)

Which of the following documents allows the project manager to assess risks that may require near term action?

- A. Probability and impact matrix
- B. Contingency analysis report
- C. Risk urgency assessment
- D. Rolling wave plan

Answer: C

NEW QUESTION 851

- (Exam Topic 4)

Co-location is a tool and technique of:

- A. Develop Human Resource Plan.
- B. Manage Project Team.
- C. Develop Project Team.
- D. Acquire Project Team.

Answer: C

NEW QUESTION 856

- (Exam Topic 4)

Which Perform Quality Control tool graphically represents how various elements of a system interrelate?

- A. Control chart
- B. Flowchart
- C. Run chart
- D. Pareto chart

Answer: B

NEW QUESTION 860

- (Exam Topic 4)

What is a tool to improve team performance?

- A. Staffing plan
- B. External feedback
- C. Performance reports
- D. Co-location

Answer: D

NEW QUESTION 863

- (Exam Topic 4)

In a weak matrix, the project managers role is:

- A. part-time
- B. full-time
- C. occasional
- D. unlimited

Answer: A

NEW QUESTION 865

- (Exam Topic 4)

Labor, materials, equipment, and supplies are examples of:

- A. Resource attributes.
- B. Resource types.
- C. Resource categories.
- D. Resource breakdown structures (RBS).

Answer: C

NEW QUESTION 867

- (Exam Topic 4)

Change requests, project management plan updates, project document updates, and organizational process assets updates are all outputs of which project management process?

- A. Plan Risk Responses
- B. Manage Stakeholder Expectations
- C. Define Scope
- D. Report Performance

Answer: B

NEW QUESTION 869

- (Exam Topic 4)

Which provides the basic framework for managing a project?

- A. Project life cycle
- B. Work breakdown structure (WBS)
- C. Enterprise environmental factors
- D. Project initiation

Answer: A

NEW QUESTION 872

- (Exam Topic 4)

The process of aggregating the estimated costs of individual activities or work packages to establish an authorized cost baseline is:

- A. Determine Budget.
- B. Baseline Budget.
- C. Control Costs.
- D. Estimate Costs.

Answer: A

NEW QUESTION 874

- (Exam Topic 4)

Which of the following Process Groups covers all nine Project Management Knowledge Areas?

- A. Executing
- B. Monitoring and Controlling
- C. Planning
- D. Initiating

Answer: C

NEW QUESTION 879

- (Exam Topic 4)

When calculating the cost of quality (COQ) for a product or service, money spent for cost of conformance would include the areas of:

- A. training, testing, and warranty work.
- B. equipment, rework, and scrap.
- C. training, document processes, and inspections.
- D. inspections, rework, and warranty work.

Answer: C

NEW QUESTION 883

- (Exam Topic 4)

The precedence diagramming method (PDM) is also known as:

- A. Arrow Diagram.
- B. Critical Path Methodology (CPM).
- C. Activity-On-Node (AON).
- D. schedule network diagram.

Answer: C

NEW QUESTION 886

- (Exam Topic 4)

Which type of risk diagram is useful for showing time ordering of events?

- A. Ishikawa
- B. Milestone
- C. Influence
- D. Decision tree

Answer: C

NEW QUESTION 889

- (Exam Topic 4)

Which of the following is an output from Control Scope?

- A. Change requests
- B. Variance analysis
- C. Accepted deliverables
- D. Requirements documentation

Answer: A

NEW QUESTION 893

- (Exam Topic 4)

In which process is a project manager identified and given the authority to apply resources to project activities?

- A. Acquire Project Team
- B. Develop Project Management Plan
- C. Manage Project Execution
- D. Develop Project Charter

Answer: D

NEW QUESTION 896

- (Exam Topic 4)

Changes to formally controlled documentation, plans, etc. to reflect modified or additional ideas or content are known as:

- A. updates.
- B. defect repairs.
- C. preventive actions.
- D. corrective actions.

Answer: A

NEW QUESTION 898

- (Exam Topic 4)

Control charts, flowcharting, histograms, Pareto charts, and scatter diagrams are tools and techniques of which process?

- A. Perform Quality Control
- B. Perform Quality Assurance
- C. Plan Quality
- D. Report Performance

Answer: C

NEW QUESTION 900

- (Exam Topic 4)

Which of the following outputs from the Control Schedule process aids in the communication of schedule variance (SV), schedule performance index (SPI), or any performance status to stakeholders?

- A. Performance organizations
- B. Schedule baselines
- C. Work performance measurements
- D. Change requests

Answer: C

NEW QUESTION 904

- (Exam Topic 4)

Which of the following terms indicates a deliverable-oriented hierarchical decomposition of the project work?

- A. WBS directory
- B. Activity list
- C. WBS
- D. Project schedule

Answer: C

NEW QUESTION 908

- (Exam Topic 4)

Which characteristic do projects and operational work share in common?

- A. Performed by systems
- B. Constrained by limited resources
- C. Repetitiveness
- D. Uniqueness

Answer: B

NEW QUESTION 910

- (Exam Topic 4)

The Project Management Process Group in which performance is observed and measured regularly from project initiation through completion is:

- A. Executing.
- B. Initiating,
- C. Monitoring and Controlling.
- D. Planning.

Answer: C

NEW QUESTION 915

- (Exam Topic 4)

One of the tools and techniques of the Manage Project Team process is:

- A. organization charts.
- B. ground rules.
- C. organizational theory,
- D. conflict management.

Answer: D

NEW QUESTION 920

- (Exam Topic 4)

Which of the following is a tool and technique used in the Develop Schedule process?

- A. Three-point estimates
- B. Resource leveling
- C. Precedence diagramming method
- D. Bottom-up estimating

Answer: B

NEW QUESTION 921

- (Exam Topic 4)

Which type of chart is a graphic representation of a process showing the relationships among process steps?

- A. Control
- B. Bar
- C. Flow
- D. Pareto

Answer: C

NEW QUESTION 926

- (Exam Topic 4)

Which of the following is an output of the Perform Integrated Change Control process?

- A. Project document updates
- B. Organizational process assets updates
- C. Change requests
- D. Deliverables

Answer: A

NEW QUESTION 927

- (Exam Topic 4)

Which of the following are outputs of Develop Project Team?

- A. Human resources plan changes and project staff assignment updates
- B. Project management plan updates and enterprise environmental factor updates
- C. Resource calendars and project management plan updates
- D. Team performance assessments and enterprise environmental factor updates

Answer: D

NEW QUESTION 931

- (Exam Topic 4)

The purpose of inspection in Perform Quality Control is to keep errors:

- A. in line with a measured degree of conformity.
- B. out of the hands of the customer.
- C. in a specified range of acceptable results.
- D. out of the process.

Answer: B

NEW QUESTION 935

- (Exam Topic 4)

Managing procurement relationships and monitoring contract performance are part of which process?

- A. Conduct Procurements
- B. Plan Procurements
- C. Administer Procurements
- D. Close Procurements

Answer: C

NEW QUESTION 936

- (Exam Topic 4)

Which process determines the risks that might affect the project?

- A. Perform Qualitative Risk Analysis
- B. Identify Risks
- C. Plan Risk Management
- D. Perform Quantitative Risk Analysis

Answer: B

NEW QUESTION 941

- (Exam Topic 4)

Ensuring that both parties meet contractual obligations and that their own legal rights are protected is a function of:

- A. Conduct Procurements.
- B. Close Procurements.
- C. Administer Procurements,

D. Plan Procurements.

Answer: C

NEW QUESTION 944

- (Exam Topic 4)

Which is the correct formula for calculating expected activity cost for three-point estimating?

- A. $C_e = (C_0 + 6C_m + C_p)/4$
- B. $C_e = (6C_0 + C_m + C_p)/4$
- C. $C_e = (C_0 + 4C_m + C_p)/6$
- D. $C_e = (C_0 + C_m + 4C_p) / 6$

Answer: C

NEW QUESTION 946

- (Exam Topic 4)

The project manager at an organization has just realized that some of the engineering staff has been allocated to project Y and will not be available to finish task X. The project manager has also discovered that at the current pace, it will not be possible to complete the project on time. Due to cost constraints, hiring more work force is not a viable option. Which tools are at the manager's disposal?

- A. Resource leveling and fast tracking
- B. Fast tracking and crashing
- C. Crashing and applying leads and lags
- D. Scheduling tools and applying leads and lags

Answer: A

NEW QUESTION 947

- (Exam Topic 4)

Which cost estimate technique includes contingencies to account for cost uncertainty?

- A. Vendor bid analysis
- B. Three-point estimates
- C. Parametric estimating
- D. Reserve analysis

Answer: D

NEW QUESTION 952

- (Exam Topic 4)

Which of the following strategic considerations often results in project authorization?

- A. Customer requests and/or issue resolution
- B. Stakeholder expectations and/or strategic opportunity (business need)
- C. Technological advancement and/or senior executive request
- D. Market demand and/or legal requirements

Answer: D

NEW QUESTION 955

- (Exam Topic 4)

The output that defines an approach to increase the support and minimize negative impacts of stakeholders is the:

- A. stakeholder management strategy.
- B. communications management plan,
- C. stakeholder register,
- D. performance report.

Answer: A

NEW QUESTION 958

- (Exam Topic 4)

A project has a current cost performance index (CPI) of 1.25. To date, US\$10,000 have been spent on performing the project work. What is the earned value of the work completed to date?

- A. US\$000
- B. US\$9500
- C. US\$10,000
- D. US\$12,500

Answer: D

NEW QUESTION 962

- (Exam Topic 4)

Which technique is commonly used for the Perform Quantitative Risk Analysis process?

- A. Brainstorming
- B. Strategies for opportunities
- C. Decision tree analysis
- D. Risk data quality assessment

Answer: C

NEW QUESTION 966

- (Exam Topic 4)

A project has an EV of 100 workdays, an AC of 120 workdays, and a PV of 80 workdays. What should be the concern?

- A. There is a cost underrun.
- B. There is a cost overrun.
- C. The project may not meet the deadline.
- D. The project is 20 days behind schedule.

Answer: B

NEW QUESTION 970

- (Exam Topic 4)

Monte Carlo is which type of risk analysis technique?

- A. Probability
- B. Quantitative
- C. Qualitative
- D. Sensitivity

Answer: B

NEW QUESTION 974

- (Exam Topic 4)

A purchase order for a specified item to be delivered by a specified date for a specified price is the simplest form of what type of contract?

- A. Cost-reimbursable
- B. Time and material
- C. Fixed price or lump-sum
- D. Cost-plus-fixed-fee

Answer: C

NEW QUESTION 979

- (Exam Topic 4)

Which is a communication method used in the Report Performance process?

- A. Expert judgment
- B. Project management methodology
- C. Stakeholder analysis
- D. Status review meetings

Answer: D

NEW QUESTION 980

- (Exam Topic 4)

Which technique helps to determine the risks that have the most potential impact on a project?

- A. Cost risk simulation analysis
- B. Expected monetary value analysis
- C. Modeling and simulation
- D. Sensitivity analysis

Answer: D

NEW QUESTION 985

- (Exam Topic 4)

Which type of analysis is used as a general management technique within the Plan Procurements process?

- A. Risk assessment analysis
- B. Make or buy analysis
- C. Contract value analysis
- D. Cost impact analysis

Answer: B

NEW QUESTION 986

- (Exam Topic 4)

Which of the following reduces the probability of potential consequences of project risk events?

- A. Preventive action
- B. Risk management
- C. Corrective action
- D. Defect repair

Answer: A

NEW QUESTION 989

- (Exam Topic 4)

Which Process Group contains those processes performed to define a new project?

- A. Initiating
- B. Planning
- C. Executing
- D. Closing

Answer: A

NEW QUESTION 993

- (Exam Topic 4)

In which type of organizational structure are staff members grouped by specialty?

- A. Functional
- B. Projectized
- C. Matrix
- D. Balanced

Answer: A

NEW QUESTION 996

- (Exam Topic 4)

Types of internal failure costs include:

- A. inspections.
- B. equipment and training.
- C. lost business.
- D. reworking and scrapping.

Answer: D

NEW QUESTION 999

- (Exam Topic 4)

"Tailoring" is defined as the:

- A. effort of addressing each process to determine which are appropriate and their appropriate degree of rigor.
- B. act of creating a project team with the specialized skills required to produce a required product or service.
- C. action taken to bring a defective or nonconforming component into compliance with requirements or specifications.
- D. adjustment of the respective influences of time, cost, and quality in order to most efficiently achieve scope.

Answer: A

NEW QUESTION 1000

- (Exam Topic 4)

Which process involves identifying and documenting the logical relationships between project activities?

- A. Develop Schedule
- B. Sequence Activities
- C. Create WBS
- D. Applying leads and lags

Answer: B

NEW QUESTION 1005

- (Exam Topic 4)

Which type of agreement is legal, contractual, and between two or more entities to form a partnership, joint venture, or some other arrangement as defined by the parties?

- A. Teaming
- B. Collective bargaining
- C. Sharing
- D. Working

Answer: A

NEW QUESTION 1006

- (Exam Topic 4)

Change request status updates are an output of which process?

- A. Perform Integrated Change Control
- B. Direct and Manage Project Execution
- C. Close Project or Phase
- D. Monitor and Control Project Work

Answer: A

NEW QUESTION 1011

- (Exam Topic 4)

The project manager needs to review the templates in use. The templates are part of the:

- A. Enterprise environmental factors.
- B. Historical information,
- C. Organizational process assets.
- D. Corporate knowledge base.

Answer: C

NEW QUESTION 1015

- (Exam Topic 6)

A project manager is searching for solutions that bring some degree of satisfaction to all parties in order to temporarily resolve a conflict. What conflict management technique is described in this situation?

- A. Withdraw/avoid
- B. Smooth /accommodate
- C. Collaborate/problem solve
- D. Compromise/ reconcile

Answer: D

NEW QUESTION 1018

- (Exam Topic 6)

Match the project manager's sphere of influence with the associated primary role.

<u>Project Manager's Sphere of Influence</u>		<u>Project Manager's Primary Role</u>
Professional discipline		Use informal and formal networks for communication among the sponsor, team, and stakeholders.
The industry		Advocate the project's value in interactions with other project managers to effectively gain the required resources and funding.
The project		Apply and transfer knowledge continuously to related professions.
The organization		Keep abreast of emerging technology developments and the changing market.

- A. Mastered
- B. Not Mastered

Answer: A

Explanation:



NEW QUESTION 1023

- (Exam Topic 6)

Which tool should a project manager consider to deal with multiple sources of risk?

- A. An updated risk register
- B. Risk breakdown structure
- C. Issue log
- D. Stakeholder register

Answer: B

NEW QUESTION 1024

- (Exam Topic 6)

A project manager has just completed several brainstorming sessions and has gathered the data to show commonality and differences in one single place. What technique was followed?

- A. Collective decision making
- B. Multicriteria decision analysis
- C. Mind mapping
- D. Affinity diagram

Answer: C

NEW QUESTION 1025

- (Exam Topic 6)

Perform Quantitative Risk Analysis focuses on:

- A. compiling a list of known risks and preparing responses to them.
- B. assessing the probability of occurrence and Impact for every risk in the risk register.
- C. evaluating the contingency and management reserves required for the project.
- D. analyzing numerically the impact of individual risks on the overall project's time and cost objectives.

Answer: D

NEW QUESTION 1026

- (Exam Topic 6)

To which knowledge area does the Collect Requirements process belong?

- A. Quality Management
- B. Scope Management
- C. Cost Management
- D. Integration Management

Answer: B

NEW QUESTION 1030

- (Exam Topic 6)

A project manager is working in an environment where requirements are not very clear and may change during the project. In addition, the project has several stakeholders and is technically complex.

Which strategies should the project manager take into account for risk management in this environment?

- A. Occasionally identify, evaluate, and classify risks.
- B. Review requirements and cross-functional project teams.
- C. Include contingency reserves and update the project management plan frequently.
- D. Frequently review incremental work products and update the requirements for proper prioritization.

Answer: D

NEW QUESTION 1032

- (Exam Topic 6)

Which of the following is used as an input to prepare a cost management plan?

- A. Expert judgment
- B. Lessons learned
- C. Cost estimates
- D. Project management plan

Answer: D

NEW QUESTION 1033

- (Exam Topic 6)

Which of the following sets are inputs to the Collect Requirements process?

- A. Project charter and requirements documentation
- B. Project charter and business documents
- C. Project charter and stakeholder requirements
- D. Business documents and requirements traceability matrix

Answer: B

NEW QUESTION 1036

- (Exam Topic 6)

Stakeholder identification and engagement should begin during what phase of the project?

- A. After the project management plan is completed
- B. After the stakeholder engagement plan is completed
- C. As soon as the project charter has been approved
- D. After the communications management plan is completed

Answer: A

NEW QUESTION 1037

- (Exam Topic 6)

Which tools and techniques will a project manager use to develop a project charter?

- A. Project manager experience, expert judgment, scope statement, and meetings
- B. Lessons learned databas
- C. Interpersonal and team skills, cost baseline, and meetings
- D. Expert judgment, data gatherin
- E. scope statement, schedule baseline, and meetings
- F. Expert judgment, data gatherin
- G. interpersonal and team skills, and meetings

Answer: D

NEW QUESTION 1042

- (Exam Topic 6)

How should a project manager plan communications for a project which has uncertain requirements?

- A. Include stakeholders in project meetings and reviews, use frequent checkpoints, and co-locate team members only.
- B. Invite customers to sprint planning and retrospective meetings, update the team quickly and on a daily basis, and use official communication channels.
- C. Adopt social networking to engage stakeholders, issue frequent and short messages, and use informal communication channels.
- D. Adopt a strong change control board process, establish focal points for main subjects, and promote formal and transparent communication.

Answer: B

NEW QUESTION 1046

- (Exam Topic 6)

Responsible, accountable, consult and inform (RACI) is an example of which of the following?

- A. Text-oriented formal
- B. Resource management plan
- C. Organization chart
- D. Responsibility assignment matrix (RAM)

Answer: D

NEW QUESTION 1051

- (Exam Topic 6)

Once the make-or-buy analysis is completed, which document defines the project delivery method?

- A. Procurement statement of work (SOW)
- B. Procurement strategy
- C. Terms of reference
- D. Change request

Answer: B

NEW QUESTION 1055

- (Exam Topic 6)

Which project manager competency is displayed through the knowledge, skills, and behaviors related to specific domains of project, program, and portfolio management?

- A. Leadership management
- B. Technical project management
- C. Strategic management
- D. Business management

Answer: B

NEW QUESTION 1056

- (Exam Topic 6)

A new project has been set. Four main stakeholders besides the project manager and four other team members have been identified. How many communication channels are available?

- A. 8
- B. 18
- C. 36
- D. 40

Answer: C

NEW QUESTION 1061

- (Exam Topic 6)

Which of the following are outputs from the process of creating a work breakdown structure (WBS)?

- A. Project scope statement and accepted deliverables
- B. Scope baseline and project documents update
- C. Accepted deliverables and enterprise environmental factors
- D. Scope baseline and work performance information

Answer: B

NEW QUESTION 1063

- (Exam Topic 6)

A functional manager is delegating a key project to a project team without a project manager. Which communication method will be most effective?

- A. Interactive
- B. Push
- C. Verbal
- D. Oral

Answer: A

NEW QUESTION 1068

- (Exam Topic 6)

The project manager is working in the processes of Project Resource Management. Which process is the project manager developing if they are using parametric estimation?

- A. Plan Resource Management
- B. Estimate Activity Resources
- C. Estimate Costs
- D. Acquire Resources

Answer: B

NEW QUESTION 1072

- (Exam Topic 6)

A project manager is analyzing a few network diagrams in order to determine the minimum duration of a project. Which diagram should the project manager reference?

- A. A diagram in which resource optimization has been applied.
- B. A diagram in which the critical path method has been applied.

- C. A diagram in which a predefined series of activities has been organized.
- D. A diagram which shows a combination of resource and time optimization.

Answer: B

NEW QUESTION 1074

- (Exam Topic 6)

Which of the following tasks focuses on decomposing work packages?

- A. Adjust duration estimates
- B. Define activities
- C. Complete rolling wave planning
- D. Develop milestone list

Answer: C

NEW QUESTION 1078

- (Exam Topic 6)

What important leadership quality/qualities should project managers possess?

- A. Skills and behaviors related to specific domains of project management
- B. Skills and behaviors needed to guide a team and help an organization reach its goals
- C. Industry expertise that helps to better deliver business outcomes
- D. Industry and organizational expertise that enhances performance

Answer: C

NEW QUESTION 1079

- (Exam Topic 6)

What tool should a project manager use to efficiently manage project resources?

- A. List of project resources
- B. Resource breakdown structure
- C. Resources detailed in the project scope
- D. Resource requirements

Answer: C

NEW QUESTION 1082

- (Exam Topic 6)

How is program success measured?

- A. By delivering the benefit of managing the program's projects in a coordinated manner
- B. By the quality, timeliness, cost-effectiveness
- C. and customer satisfaction of the product or service
- D. By completing the right projects to achieve objectives rather than completing projects the right way
- E. By aggregating the successes of the individual projects in the program

Answer: A

NEW QUESTION 1086

- (Exam Topic 6) Given the following information. Activity A takes one week.

Activity B takes three weeks. Activity C takes two weeks. Activity D takes five weeks.

Activity A starts at the same time as Activity B. Activity C follows Activity B and Activity A. Activity D follows Activity C.

How long will it take to complete the project?

- A. Eleven weeks
- B. Nine weeks
- C. Eight weeks
- D. Ten weeks

Answer: D

NEW QUESTION 1088

- (Exam Topic 6)

What is a tailoring consideration for the application of Project Risk Management processes?

- A. Project complexity
- B. Procurement criteria
- C. Communication technology
- D. Knowledge management

Answer: A

NEW QUESTION 1093

- (Exam Topic 6)

A sponsor asks a project manager to provide a project's expected total costs based on its progress. What formula should the project manager use to determine this?

- A. Eamed value (EV) / actual cost (AC)
- B. Estimate at completion (EAC) - AC
- C. Budget at completion (BAC) / cost performance index (CPI)
- D. EV - planned value (PV)

Answer: B

NEW QUESTION 1098

- (Exam Topic 6)

Which role does the project manager resemble best?

- A. Orchestra conductor
- B. Facilities supervisor
- C. Functional manager
- D. School principal

Answer: A

NEW QUESTION 1103

- (Exam Topic 6)

Which are inputs for the Plan Quality Management process?

- A. Quality metrics, project documents, and financial performance
- B. Quality management plan, project documents, and quality metrics
- C. Project management plan, project documents, and organizational process assets
- D. Project management plan, quality metric
- E. and project documents

Answer: C

NEW QUESTION 1107

- (Exam Topic 6)

Which tasks should a project manager perform in order to manage the project schedule effectively?

- A. Plan Schedule Management, Define Activities, Sequence Activities, Estimate Activity Durations, Define Quality of Activitie
- B. Develop Schedule
- C. Plan Schedule Managemen
- D. Define Activities, Sequence Activities, Estimate Activity Durations, Develop Schedul
- E. Control Schedule
- F. Plan Schedule Managemen
- G. Define Activities, Sequence Activities, Estimate Activity Durations, Estimate Cost of Activitie
- H. Develop Schedule
- I. Define Activitie
- J. Sequence Activities, Estimate Activity Duration
- K. Define Quality of Activities.Estimate Cost of Activities, Develop Schedule

Answer: B

NEW QUESTION 1111

.....

Thank You for Trying Our Product

We offer two products:

1st - We have Practice Tests Software with Actual Exam Questions

2nd - Questions and Answers in PDF Format

CAPM Practice Exam Features:

- * CAPM Questions and Answers Updated Frequently
- * CAPM Practice Questions Verified by Expert Senior Certified Staff
- * CAPM Most Realistic Questions that Guarantee you a Pass on Your First Try
- * CAPM Practice Test Questions in Multiple Choice Formats and Updates for 1 Year

100% Actual & Verified — Instant Download, Please Click
[Order The CAPM Practice Test Here](#)