

Exam Questions 2V0-621D

VMware Certified Professional 6 – Data Center Virtualization Delta Beta

<https://www.2passeasy.com/dumps/2V0-621D/>



NEW QUESTION 1

An object has inherited permissions from two parent objects. What is true about the permissions on the object?

- A. The common permissions between the two are applied and the rest are discarded.
- B. The permissions are combined from both parent objects.
- C. No permissions are applied from the parent objects.
- D. The permission is randomly selected from either of the two parent objects.

Answer: B

Explanation: Most inventory objects inherit permissions from a single parent object in the hierarchy. For example, a datastore inherits permissions from either its parent datastore folder or parent datacenter. Virtual machines inherit permissions from both the parent virtual machine folder and the parent host, cluster, or resource pool simultaneously. To restrict a user's privileges on a virtual machine, you must set permissions on both the parent folder and the parent host, cluster, or resource pool for that virtual machine.

Reference: http://pubs.vmware.com/vsphere-4-esx-vcenter/index.jsp?topic=/com.vmware.vsphere.dcadmin.doc_41/vsp_dc_admin_guide/managing_users_groups_roles_and_permissions/c_hierarchical_inheritance_of_permissions.html

NEW QUESTION 2

An administrator would like to use the VMware Certificate Authority (VMCA) as an Intermediate Certificate Authority (CA). The first two steps performed are:

? Replace the Root Certificate

? Replace Machine Certificates (Intermediate CA)

Which two steps would need to be performed next? (Choose two.)

- A. Replace Solution User Certificates (Intermediate CA)
- B. Replace the VMware Directory Service Certificate (Intermediate CA)
- C. Replace the VMware Directory Service Certificate
- D. Replace Solution User Certificates

Answer: AC

Explanation: You can replace the VMCA root certificate with a third-party CA-signed certificate that includes VMCA in the certificate chain. Going forward, all certificates that VMCA generates include the full chain. You can replace existing certificates with newly generated certificates. This approach combines the security of third-party CA-signed certificate with the convenience of automated certificate management.

Reference:

<http://pubs.vmware.com/vsphere-60/index.jsp?topic=%2Fcom.vmware.vsphere.security.doc%2FGUID-5FE583A2-3737-4B62-A905-5BB38D479AE0.html>

NEW QUESTION 3

An administrator has been instructed to secure existing virtual machines in vCenter Server.

Which two actions should the administrator take to secure these virtual machines? (Choose two.)

- A. Disable native remote management services
- B. Restrict Remote Console access
- C. Use Independent Non-Persistent virtual disks
- D. Prevent use of Independent Non-Persistent virtual disks

Answer: BD

Explanation: Reference: <http://www.vmware.com/files/pdf/techpaper/VMW-TWP-vSPHR-SECRTY-HRDNG-USLET-101-WEB-1.pdf> (page 11, see the tables)

NEW QUESTION 4

An administrator needs two vCenter Servers to be visible within a single vSphere Web Client session.

Which two vCenter Server and Platform Services Controller (PSC) configurations would accomplish this? (Choose two.)

- A. Install a single PSC with two vCenter Servers registered to it.
- B. Install two PSCs in the same Single Sign-On domain with one vCenter Server registered to each PSC.
- C. Install a single PSC with two vCenter Servers registered to it and configure Linked Mode.
- D. Install two PSCs in the same Single Sign-On domain with one vCenter Server registered to each PSC and configure Linked Mode.

Answer: AB

Explanation: To have two vcenter servers visible within a single vSphere web client session, you have to install a single PSC with both vCenter servers registered. You also need to install two PSCs in the same SSO domain with one vCenter Server registered to each PSC.

NEW QUESTION 5

Which VMware Single Sign-On component issues Security Assertion Markup Language (SAML) tokens?

- A. VMware Security Token Service
- B. Administration Server
- C. VMware Directory Service
- D. Identity Management Service

Answer: A

Explanation: The security token service issues Security Assertion Markup Language (SAML) tokens. These security tokens pass information about a system user between an identity provider and a web service. This service enables a user who has logged on through vCenter Single Sign-On to use multiple web-service delivered applications without authenticating to each one.

Reference: <https://pubs.vmware.com/vsphere-51/index.jsp?topic=%2Fcom.vmware.vsphere.upgrade.doc%2FGUID-90C1E3DC-4397-4BF0-808E-DF3802E56BC6.html>

NEW QUESTION 6

Lockdown Mode has been enabled on an ESXi 6.x host and users are restricted from logging into the Direct Console User Interface (DCUI). Which two statements are true given this configuration? (Choose two.)

- A. A user granted administrative privileges in the Exception User list can login.
- B. A user defined in the DCUI.Access without administrative privileges can login.
- C. A user defined in the ESXi Admins domain group can login.
- D. A user set to the vCenter Administrator role can login.

Answer: AB

Explanation: Reference: <https://pubs.vmware.com/vsphere-60/index.jsp?topic=%2Fcom.vmware.vsphere.security.doc%2FGUID-F8F105F7-CF93-46DF-9319-F8991839D265.html>

NEW QUESTION 7

When attempting to log in with the vSphere Web Client, users have reported the error: Incorrect Username/Password
The administrator has configured the Platform Services Controller Identity Source as:

? Type. Active Directory as an LDAP Server

? Domain: vmware.com

? Alias: VMWARE

? Default Domain: Yes

Which two statements would explain why users cannot login to the vSphere Web Client? (Choose two.)

- A. Users are typing the password incorrectly.
- B. Users are in a forest that has 1-way trust.
- C. Users are in a forest that has 2-way trust.
- D. Users are logging into vCenter Server with incorrect permissions.

Answer: AB

Explanation: The possible explanation for this error might be that the users are typing password incorrectly or they are in a forest with has only 1-way trust. You need 2-way trust to get the credentials accepted.

NEW QUESTION 8

Which two methods are recommended for managing the VMware Directory Service? (Choose two.)

- A. Utilize the vmdir command.
- B. Manage through the vSphere Web Client.
- C. Manage using the VMware Directory Service.
- D. Utilize the dc rep command.

Answer: AB

Explanation: To manage VMware directory service, you can use vmdir command and vsphere web client. VMware directory service is always managed using vmdir command which is specifically used for directory services.

NEW QUESTION 9

What are two sample roles that are provided with vCenter Server by default? (Choose two.)

- A. Virtual machine User
- B. Network Administrator
- C. Content Library Administrator
- D. Storage Administrator

Answer: AB

Explanation: Reference: https://books.google.com.pk/books?id=35TE4cSycNAC&pg=PA97&lpg=PA97&dq=sample+roles+that+are+provided+with+vCenter+Server+by+default&source=bl&ots=ggd5VKGky5&sig=-lc0Juby-tkvddWsrG_zHgEDTQY&hl=en&sa=X&ved=0CDcQ6AEwBWoVChMIIZH2x8WExglVxDoUCh2N1AC2#v=onepage&q=sample%20roles%20that%20are%20provided%20with%20vCenter%20Server%20by%20default&f=false

NEW QUESTION 10

An administrator with global administrator privileges creates a custom role but fails to assign any privileges to it. Which two privileges would the custom role have? (Choose two.)

- A. System.View
- B. System.Anonymous

- C. System.User
- D. System.ReadOnly

Answer: AB

Explanation: When you add a custom role and do not assign any privileges to it, the role is created as a Read Only role with three system-defined privileges: System.Anonymous, System.View, and System.Read.

Reference: <https://pubs.vmware.com/vsphere-51/index.jsp?topic=%2Fcom.vmware.vsphere.security.doc%2FGUID-93B962A7-93FA-4E96-B68F-AE66D3D6C663.html>

NEW QUESTION 10

Which Platform Service Controller Password Policy determines the number of days a password can exist before the user must change it?

- A. Maximum Lifetime
- B. Password Age
- C. Maximum Days
- D. Password Lifetime

Answer: A

Explanation: You can configure the following parameters for password policy:

? Description – Password policy description. Required.

? Maximum lifetime – Maximum number of days that a password can exist before it has to be changed.

? Restrict re-use – Number of the user's previous passwords that cannot be set again.

? Maximum length – Maximum number of characters that are allowed in the password.

? Minimum length – Minimum number of characters required in the password.

? Character requirements – Minimum number of different character types required in the password.

? Identical adjacent characters – Maximum number of identical adjacent characters allowed in the password.

Reference: <http://www.vladan.fr/vcp6-dcv-objective-1-3-enable-sso-and-active-directory-integration/>

NEW QUESTION 15

Which three connection types are supported between a remote site and vCloud Air? (Choose three.)

- A. Secure Internet Connectivity
- B. Private Connect
- C. Direct Connect
- D. Internet Connectivity
- E. Secure VPN

Answer: ACE

Explanation: The connection types supported between a remote site and vcloud Air is secure VPN, direct connect and Secure Internet Connectivity.

NEW QUESTION 20

An administrator is assigning a user the Content Library administrator role. The user will only be creating the library for a single vCenter Server.

What is the lowest level of the permission heirarchy that this role can be granted to the user and still allow them to create a Content Library?

- A. Global
- B. Datacenter Folder
- C. Virtual Center
- D. Datacenter

Answer: A

Explanation: To let a user manage a content library and its items, an Administrator can assign the Content Library Administrator role to that user as a global permission. The Content Library Administrator role is a sample role in the vSphere Web Client.

Users who are Administrators can also manage libraries and their contents. If a user is an Administrator at a vCenter Server level, they have sufficient privileges to manage the libraries that belong to this vCenter Server instance, but cannot see the libraries unless they have a Read-Only role as a global permission.

Reference:

http://pubs.vmware.com/vsphere-60/index.jsp?topic=%2Fcom.vmware.vsphere.vm_admin.doc%2FGUID-18F4B892-D685-4473-AC25-3195D68DFD90.html

NEW QUESTION 21

An administrator has recently audited the environment and found numerous virtual machines with sensitive data written to the configuration files.

To prevent this in the future, which advanced parameter should be applied to the virtual machines?

- A. isolation.tools.setinfo.disable = true
- B. isolation.tools.setinfo.enable = true
- C. isolation.tools.setinfo.disable = false
- D. isolation.tools.setinfo.enable = false

Answer: A

Explanation: It is configured on a per-VM basis. You can increase the guest operating system variable memory limit if large amounts of custom information are being stored in the configuration file. You can also prevent guests from writing any name-value pairs to the configuration file. To do so, use the following setting,

and set it to 'true':

NEW QUESTION 26

An administrator is creating a new Content Library. It will subscribe to another remote Content Library without authentication enabled. What information from the published library will they need in order to complete the subscription?

- A. Subscription URL
- B. A security password from the publishing Content Library
- C. Publisher's Items.json file
- D. Username from the publishing Content Library

Answer: A

Explanation: Subscription URL from the published library is needed to complete the subscription.

NEW QUESTION 30

An administrator creates a Private VLAN with a Primary VLAN ID of 2. The administrator then creates three Private VLANs as follows:

- ? Marketing
- ? PVLAN ID. 4
- ? PVLAN Type. Isolated
- ? Accounting
- ? PVLAN ID. 5
- ? PVLAN Type. Community
- ? Secretary
- ? PVLAN ID. 17
- ? PVLAN Type. Isolated

Users in the Accounting PVLAN are reporting problems communicating with servers in the Marketing PVLAN.

Which two actions could the administrator take to resolve this problem? (Choose two.)

- A. Change the PVLAN type for the Accounting network to Promiscuous.
- B. Change the PVLAN ID for the Accounting network to 2.
- C. Change the PVLAN type for Marketing network to Promiscuous.
- D. Change the PVLAN ID for Accounting network to 4.

Answer: AB

Explanation: Change the PVLAN type for the accounting network to Promiscuous and the PVLAN ID to 2. This way, the servers in Marketing PVLAN will communicate effectively.

NEW QUESTION 32

Which two features are deprecated in Network I/O Control 3 (NIOC3)? (Choose two.)

- A. Class Of Service (COS) Tagging
- B. Bandwidth Allocation
- C. User-defined network resource pools
- D. Admission control

Answer: AC

Explanation: Class of Service tagging and user-defined resource pools are deprecated in NIOC3.

NEW QUESTION 35

An administrator runs the command `esxcli storage core device list` and sees the following output:

`mpx.vmhba1:C0:T0:L0 Display Name: RAID 5 (mpx.vmhba1:C0:T0:L0) Has Settable Display Name: false SizE. 40960 Device Type: Direct-Access Multipath Plugin: NMP Devfs Path: /vmfs/devices/disks/mpx.vmhba1:C0:T0:L0 Status: off Is Local: true`

What can be determined by this output?

- A. The device is a being used for vFlash Read Cache.
- B. The device is in a Permanent Device Loss (PDL) state.
- C. The device is a local Solid State Device (SSD).
- D. The device is in an All Paths Down (APD) state.

Answer: B

Explanation: Reference: <http://vmwaremine.com/2014/07/07/manage-psa-claimrules-satp-rules-esxcli/#sthash.i6Esax8x.dpbs>

NEW QUESTION 40

Which two groups of settings should be reviewed when attempting to increase the security of virtual machines (VMs)? (Choose two.)

- A. Disable hardware devices
- B. Disable unexposed features
- C. Disable Vmtools devices
- D. Disable VM Template features

Answer: AB

Explanation: Make sure you review hardware devices and disable the unnecessary ones. Also disable unexposed features before increasing virtual machines security.

NEW QUESTION 41

Which two advanced features should be disabled for virtual machines that are only hosted on a vSphere system? (Choose two.)

- A. isolation.tools.unity.push.update.disable
- B. isolation.tools.ghi.launchmenu.change
- C. isolation.tools.bbs.disable
- D. isolation.tools.hgfsServerSet.enable

Answer: AB

Explanation: Because VMware virtual machines run in many VMware products in addition to vSphere, some virtual machine parameters do not apply in a vSphere environment. Although these features do not appear in vSphere user interfaces, disabling them reduces the number of vectors through which a guest operating system could access a host. Use the following

.vmx setting to disable these features:

isolation.tools.unity.push.update.disable = "TRUE" isolation.tools.ghi.launchmenu.change = "TRUE" isolation.tools.ghi.allowToolsOn.disable = "TRUE"

isolation.tools.hgfsServerSet.disable = "TRUE" isolation.tools.memscannedFileSampleStats.disable = "TRUE" isolation.tools.getCrashData.disable = "TRUE"

Reference:

<https://pubs.vmware.com/vsphere-51/index.jsp?topic=%2Fcom.vmware.vmtools.install.doc%2FGUID-685722FA-9009-439C-9142-18A9E7C592EA.html>

NEW QUESTION 45

Which three traffic types can be configured for dedicated Vmkernel adapters? (Choose three.)

- A. Discovery traffic
- B. vMotion traffic
- C. vSphere Replication NFC traffic
- D. Provisioning traffic
- E. vSphere Custom traffic

Answer: BCD

Explanation: Topic 3, Configure and Administer Advanced vSphere Storage

NEW QUESTION 49

An administrator is configuring virtual machines to use Worldwide Port Names (WWPNs) to access the storage.

Which two conditions are required? (Choose two.)

- A. The switches in the fabric must be N-Port ID Virtualization aware.
- B. The virtual machines must be using passthrough Raw Disk Mapping (RDMp).
- C. The virtual machines must be using Virtual Machine Disk (VMDK).
- D. The switches in the fabric must be Storage I/O Control aware.

Answer: AB

Explanation: To configure virtual machines to use WWPNs, you have to set N-Port ID virtualization aware setting on the switches in the fabric and you should also make sure that the virtual machines must be using passthrough raw disk mapping.

NEW QUESTION 50

Which two statements are true regarding Virtual SAN Fault Domains? (Choose two.)

- A. They enable Virtual SAN to tolerate the failure of an entire physical rack.
- B. Virtual SAN ensures that no two replicas are provisioned on the same domain.
- C. Virtual SAN ensures that all replicas are provisioned on the same domain.
- D. They require VMware High Availability (HA) to ensure component distribution across domains.

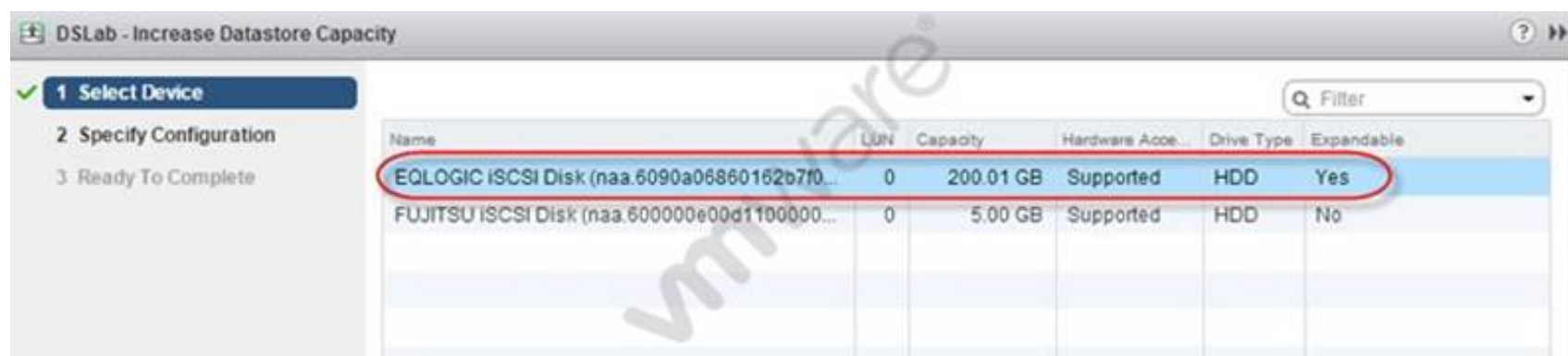
Answer: AB

Explanation: A fault domain consists of one or more Virtual SAN hosts grouped together according to their physical location in the data center. When configured, fault domains enable Virtual SAN to tolerate failures of entire physical rack as well as failures of a single host, capacity device, network link or a network switch dedicated to fault domains. Fault domains cannot be configured for stretched or metro clusters.

Reference: <http://pubs.vmware.com/vsphere-60/index.jsp?topic=%2Fcom.vmware.vsphere.virtualsan.doc%2FGUID-8491C4B0-6F94-4023-8C7A-FD7B40D0368D.html>

NEW QUESTION 52

Refer to the Exhibit.



What will be the result of selecting the highlighted device?

- A. Datastore will grow up to 200.01GB using the remaining free space on the device.
- B. Datastore will add 200.01GB by adding the device as a second extent.
- C. The device size can be expanded to be larger than 200.01 GB in size.
- D. The device is not suitable for this operation.

Answer: A

Explanation: The datastore will use up 200.01 GB of free space on the device.

NEW QUESTION 56

An administrator needs to recover disk space on a previously-used thin provisioned virtual disk. The volumes where the administrator needs to recover the disk blocks are on VAAI- compliant storage arrays. Which two actions should the administrator take to accomplish this task? (Choose two.)

- A. Perform a Storage vMotion to another volume in order to force free space recovery to occur.
- B. This recreates the volume in a new location and recovers all unused space.
- C. Use VMware Converter to migrate the virtual machine to a new datastore.
- D. This will recreate the volumes and recover all unused space.
- E. Issue the vmkfstools -vmfs unmap command within the VMFS volume directory on the ESXi host console.
- F. Execute the esxcli storage vmfs unmap command.

Answer: BD

Explanation: Reference: <http://www.boche.net/blog/index.php/2013/09/13/vsphere-5-5-unmap-deep-dive/>

NEW QUESTION 61

Which two tasks does the Pluggable Storage Architecture (PSA) perform? (Choose two.)

- A. Handles I/O queueing to the logical devices.
- B. Handles physical path discovery, but is not involved in the removal.
- C. Handles physical path discovery and removal.
- D. Handles I/O queueing to FC storage HBAs.

Answer: AC

Explanation: When coordinating the VMware NMP and any installed third-party MPPs, the PSA performs the following tasks:

- ? Loads and unloads multipathing plug-ins.
- ? Hides virtual machine specifics from a particular plug-in.
- ? Routes I/O requests for a specific logical device to the MPP managing that device.
- ? Handles I/O queueing to the logical devices.
- ? Implements logical device bandwidth sharing between virtual machines.
- ? Handles I/O queueing to the physical storage HBAs.
- ? Handles physical path discovery and removal.
- ? Provides logical device and physical path I/O statistics.

Reference: <http://pubs.vmware.com/vsphere-51/index.jsp?topic=%2Fcom.vmware.vsphere.storage.doc%2FGUID-C1C4A725-8BE4-4875-919E-693812961366.html>

NEW QUESTION 63

What are two use cases for Fibre Channel Zoning in a vSphere environment? (Choose two.)

- A. Increases the number of targets presented to an ESXi host.
- B. Controls and isolates paths in a fabric.
- C. Controls and isolates paths to an NFS share.
- D. Can be used to separate different environments.

Answer: BD

Explanation: Zoning provides access control in the SAN topology. Zoning defines which HBAs can connect to which targets. When you configure a SAN by using zoning, the devices outside a zone are not visible to the devices inside the zone.

Reference: <https://pubs.vmware.com/vsphere-55/index.jsp?topic=%2Fcom.vmware.vsphere.storage.doc%2FGUID-E7818A5D-6BD7-4F51-B4BA-EF8F2D3A8357.html>

NEW QUESTION 68

An administrator is having a problem configuring Storage I/O Control on a Datastore. Which two conditions could explain the issue? (Choose two.)

- A. A host is running ESXi 4.0.
- B. An ESXi host does not have appropriate licensing.
- C. The vCenter Server version is 5.0.
- D. The vCenter Server License is Standard.

Answer: AB

Explanation: Reference: http://kb.vmware.com/selfservice/microsites/search.do?language=en_US&cmd=displayKC&externalId=2021530

NEW QUESTION 71

Which three are requirements for configuring Storage I/O Control (SIOC)? (Choose three.)

- A. The datastore must consist of only one extent.
- B. The datastore is managed by a single vCenter Server.
- C. Auto-tiered storage must be compatible with SIOC.
- D. Auto-tiered storage must be SSD or SATA.
- E. The datastore must be VMFS.

Answer: ABC

Explanation: Storage I/O Control (SIOC) is used to control the I/O usage of a virtual machine and to gradually enforce the predefined I/O share levels. SIOC is supported on Fibre Channel and iSCSI connected storage in ESX/ESXi 4.1 and 5.0. With ESXi 5.0 support for NFS with SIOC was also added. Datastores with multiple extents or Raw Device Mapping (RDM) are currently not supported.

Reference: http://kb.vmware.com/selfservice/microsites/search.do?language=en_US&cmd=displayKC&externalId=1022091

NEW QUESTION 73

Which two considerations should an administrator keep in mind when booting from Software Fiber Channel over Ethernet (FCoE)? (Choose two.)

- A. Software FCoE boot configuration can be changed from within ESXi.
- B. Software FCoE boot firmware cannot export information in FBFT format.
- C. Multipathing is not supported at pre-boot.
- D. Boot LUN cannot be shared with other hosts even on shared storage.

Answer: CD

Explanation: When you boot the ESXi host from SAN using software FCoE, certain requirements and considerations apply.

? You cannot change software FCoE boot configuration from within ESXi.

? Coredump is not supported on any software FCoE LUNs, including the boot LUN.

? Multipathing is not supported at pre-boot.

? Boot LUN cannot be shared with other hosts even on shared storage.

Reference:

<https://pubs.vmware.com/vsphere-55/index.jsp?topic=%2Fcom.vmware.vsphere.storage.doc%2FGUID-8E57EDC9-F122-4A81-8B80-FE19FFE832B1.html>

NEW QUESTION 78

Refer to the Exhibit.



An administrator is configuring a storage device as shown in the Exhibit. What is the expected effect on the stated device after running the command?

- A. I/O will rotate on all storage targets regardless of port group state.
- B. I/O will rotate on all storage targets that are Active Optimized state only.
- C. I/O will rotate on all storage targets that are Active Unoptimized state only.
- D. I/O will rotate on all storage targets that are on Available Nodes only.

Answer: B

Explanation: When the command is run, I/O will rotate on all storage targets regardless of port group state.

NEW QUESTION 82

An administrator created a six node Virtual SAN cluster, created a fault domain, and moved three of the six nodes into that domain.

A node that is a member of the fault domain fails. What is the expected result?

- A. The remaining two fault domain members are treated as failed.
- B. The remaining two fault domain members stay protected by the domain.
- C. One of the non-member nodes will be automatically added to the fault domain.
- D. VMware High Availability will restart virtual machines on remaining nodes in the domain.

Answer: A

Explanation: When the member of the fault domain fails, the remaining two fault domain members are treated as failed too.

NEW QUESTION 85

Refer to the Exhibit.

Storage Adapters

Adapter	Type	Status	Identifier	Targets	Devices	Paths
PERC H310 Mini Monolithics						
vmhba1	SCSI	Unknown		7	7	7
Patsburg 6 Port SATA AHCI Controller						
vmhba36	Block SCSI	Unknown		0	0	0
vmhba0	Block SCSI	Unknown		0	0	0
vmhba35	Block SCSI	Unknown		0	0	0
vmhba37	Block SCSI	Unknown		1	1	1
vmhba38	Block SCSI	Unknown		0	0	0
vmhba34	Block SCSI	Unknown		0	0	0

Adapter Details

Properties | **Devices** | Paths

Name	Type	Capacity	Operational...	Hardware Acceleration	Drive Type
Local SEAGATE Disk (naa.5000...	disk	279.40 GB	Attached	Unknown	HDD
Local SEAGATE Disk (naa.5000...	disk	279.40 GB	Attached	Unknown	HDD
Local DP Enclosure Svc Dev (t1...	enclosure		Attached	Not supported	HDD
Local SEAGATE Disk (naa.5000...	disk	279.40 GB	Attached	Unknown	HDD
Local ATA Disk (naa.500253825...	disk	93.16 GB	Attached	Unknown	Flash
Local ATA Disk (naa.500253825...	disk	93.16 GB	Attached	Unknown	Flash
Local SEAGATE Disk (naa.5000...	disk	279.40 GB	Attached	Unknown	HDD

The list of devices attached to vmhba1 will be the basis for configuring a VMware Virtual SAN using Manual Mode. Based on the exhibit, which two combinations of devices should be used to create Disk Group(s)? (Choose two.)

- A. One Disk Group with one Flash Drive and three HDDs
- B. Two Disk Groups with one Flash Drive and two HDDs each
- C. One Disk Group with one Flash Drive and four HDDs
- D. Two Disk Groups with two Flash Drives and four HDDs each

Answer: AB

Explanation: To create the disk group, you have to build a disk group with a flash drive and three HDDs or you can build two groups with one flash drive and two HDDs each.

NEW QUESTION 88

A device's vStorage API for Array Integration (VAAI) support status command line output shows:

naa.500253825002a865 VAAI Plugin Name: ATS Status: unsupported Clone Status: unsupported Zero Status: supported Delete Status: unsupported

What is the corresponding VAAI support status in the vSphere Web Client?

- A. Unknown
- B. Supported
- C. Not supported
- D. Unsupported

Answer: A

Explanation: The VAAI support status will be unknown. Reference:

https://pubs.vmware.com/vsphere-55/index.jsp?topic=%2Fcom.vmware.vsphere.storage.doc%2FGUID-0520FD37-D7AD-4FBA-9A2E-E5F8211FCBBB.html

NEW QUESTION 90

An administrator is upgrading a vCenter Server Appliance and wants to ensure that all the prerequisites are met.

What action must be taken before upgrading the vCenter Server Appliance?

- A. Install the Client Integration Plug-in.
- B. Install the database client.
- C. Install the ODBC connector.
- D. Install the Update Manager Plug-in.

Answer: A

Explanation: You must install the Client Integration Plug-in before you deploy or upgrade the vCenter Server Appliance.
Reference: <https://pubs.vmware.com/vsphere-60/index.jsp?topic=%2Fcom.vmware.vsphere.upgrade.doc%2FGUID-CA16F78B-7890-4357-9760-AF8648806FE7.html>

NEW QUESTION 95

What three supported methods can be used to upgrade a host from ESXi 5.x to ESXi 6.x? (Choose three.)

- A. vSphere Update Manager
- B. vihostupdate
- C. esxcli
- D. vSphere Auto Deploy
- E. esxupdate

Answer: ACD

Explanation: Reference: <https://pubs.vmware.com/vsphere-60/index.jsp?topic=%2Fcom.vmware.vsphere.upgrade.doc%2FGUID-FE668788-1F32-4CB2-845C-5547DD59EB48.html>

NEW QUESTION 96

What are three recommended prerequisites before upgrading virtual machine hardware? (Choose three.)

- A. Create a backup or snapshot of the virtual machine.
- B. Upgrade VMware Tools to the latest version.
- C. Verify that the virtual machine is stored on VMFS3, VMFS5, or NFS datastores.
- D. Detach all CD-ROM/ISO images from the virtual machines.
- E. Set the Advanced Parameter virtualHW.version = 11

Answer: ABC

Explanation: Reference: https://pubs.vmware.com/vsphere-50/index.jsp?topic=%2Fcom.vmware.vsphere.upgrade.doc_50%2FGUID-A45CBEE5-C4D2-484E-A699-A5A577244DE0.html

NEW QUESTION 97

Which three statements are true when restoring a Resource Pool Tree? (Choose three.)

- A. Distributed Resource Scheduler must be set to manual.
- B. Restoring a snapshot can only be done on the same cluster from which it was taken.
- C. No other resource pools can be present in the cluster.
- D. Restoring a resource pool tree must be done in the vSphere Web Client.
- E. Enabling Enhanced vMotion Compatibility on the cluster is required.

Answer: BCD

Explanation: Reference: <https://pubs.vmware.com/vsphere-51/index.jsp?topic=%2Fcom.vmware.vsphere.resmgmt.doc%2FGUID-43B3A1EF-B7FF-421C-96FA-33FA230688BB.html>

NEW QUESTION 101

When importing an existing SSL certificate into vSphere Replication Server, which file format is required?

- A. PKCS#12
- B. DER
- C. PEM
- D. PKCS#7

Answer: A

Explanation: vSphere Replication can only import and use certificates and private keys from a file in the PKCS#12 format. Sometimes these files have a .pfx extension.
Reference: <https://pubs.vmware.com/vsphere-51/topic/com.vmware.ICbase/PDF/vsphere-replication-51-admin.pdf>

NEW QUESTION 104

Which three parameters should be considered when calculating the bandwidth for vSphere Replication? (Choose three.)

- A. Data change rate
- B. Traffic rates
- C. Link speed
- D. Application type
- E. Hardware type

Answer: ABC

Explanation: Reference: <http://blogs.vmware.com/smb/2015/05/vsphere-replication-bandwidth-requirements.html>

NEW QUESTION 105

Which keystore would a vSphere Replication administrator use to manually add an additional Certificate Authority certificate?

- A. hms-truststore.jks
- B. hms-keystore.jks
- C. certificates.ks
- D. cacerts.ks

Answer: A

Explanation: Reference: http://kb.vmware.com/selfservice/microsites/search.do?language=en_US&cmd=displayKC&externalId=2080395

NEW QUESTION 107

An administrator subscribes to the vCloud Air Disaster Recovery service. Which replicated objects can be directly monitored and managed?

- A. Virtual machine Snapshots
- B. vApps
- C. Virtual machines
- D. ESXi Hosts

Answer: C

Explanation: You use vSphere Replication at your source site to configure your environment and replicate virtual machines to vCloud Air. You can use vSphere Replication, the vCloud Air portal, or the vCloud Air plug-in to monitor and manage the replicated virtual machines in the cloud.

Reference: http://pubs.vmware.com/vchsplugin-15/topic/com.vmware.ICbase/PDF/vca_plugin_using.pdf

NEW QUESTION 112

An administrator has created a resource pool named Marketing HTTP with a Memory Limit of 24 GB and a CPU Limit of 10,000 MHz.

The Marketing HTTP resource pool contains three virtual machines:

? Mktg-SQL has a memory reservation of 16 GB.

? Mktg-App has a memory reservation of 6 GB.

? Mktg-Web has a memory reservation of 4 GB.

What would happen if all three virtual machines are powered on?

- A. All three virtual machines can power on, but will have memory contention.
- B. All three virtual machines can power on without memory contention.
- C. Only two of the three virtual machines can power on.
- D. Only one of the virtual machines can power on.

Answer: C

Explanation: Since the limit of 24 GB and CPU limit of 10,000 MH is enforced, only two of the virtual machines can power on simultaneously.

NEW QUESTION 114

What is the compression algorithm used by vSphere Replication to compress data at the source?

- A. FastLZ
- B. Lz4
- C. Lzr
- D. Lzx

Answer: A

Explanation: vSphere Replication 6.0 utilizes the FastLZ compression library. This provides a nice balance of speed, minimal CPU overhead, and compression efficiency. When using vSphere 6.0 and vSphere Replication 6.0 at both the source and target locations, updates are compressed at the source and stay compressed until they are written to storage at the target. In cases where there is a mixed configuration, packets may be decompressed at some point in the replication path. For example, if a vSphere 6.0 host is connecting to a vSphere Replication 5.8 virtual appliance, packets will not be compressed over the network. Another example: vSphere 6.0 replicating to a vSphere Replication 6.0 virtual appliance, which is writing to vSphere 5.5 host storage - packets are compressed from the source to the vSphere Replication 6.0 virtual appliance, but are decompressed in the appliance before being written to the vSphere 5.5 storage at the target. Performing this decompression in the vSphere Replication virtual appliance will cause higher vCPU utilization in the appliance. As you can imagine, the most benefit from compression will be realized when running vSphere 6.0 and vSphere Replication 6.0 at both the source and target locations.

Reference: <http://blogs.vmware.com/vsphere/2015/03/vr-60-compression.html>

NEW QUESTION 115

Which two capabilities does the vSphere Replication Client Plug-in provide? (Choose two.)

- A. Configure connections between vSphere Replication Sites.
- B. Deploy and register additional vSphere Replication Servers.

- C. Reconfigure the vSphere Replication Server.
- D. Configure an external database for a vSphere Replication Site.

Answer: AB

Explanation: You use the vSphere Replication client plug-in to perform all vSphere Replication actions.

- ? Configure connections between vSphere Replication sites.
- ? View all vCenter Server instances that are registered with the same SSO and status of each vSphere Replication extension.
- ? Deploy and register additional vSphere Replication servers.
- ? Configure the replication of individual or multiple virtual machines.
- ? View incoming and outgoing replications.
- ? Monitor and manage the status of the replications.
- ? Recover virtual machines.

Reference: https://pubs.vmware.com/vsphere-55/index.jsp?topic=%2Fcom.vmware.vsphere.replication_admin.doc%2FGUID-DEFB63AE-C60C-4606-9F1C-E1B270CA408A.html

NEW QUESTION 120

What are two reasons why a local flash device would be unavailable for use with Virtual SAN? (Choose two.)

- A. It has a VMFS datastore present.
- B. It is in use by the vFlash Read Cache feature.
- C. It is smaller than the minimum capacity required for Virtual SAN usage.
- D. It does not have any partitions created.

Answer: AB

Explanation: Reference: <http://pubs.vmware.com/vsphere-60/index.jsp?topic=%2Fcom.vmware.vsphere.troubleshooting.doc%2FGUID-A17F5D39-C1F3-47B1-9645-5C247412F370.html>

NEW QUESTION 121

An administrator is troubleshooting a virtual machine that has unexpectedly powered off. Which two logs should be used to troubleshoot the issue? (Choose two.)

- A. vmware.log
- B. hostd.log
- C. syslog.log
- D. shell.log

Answer: AB

Explanation: Vmware.log and hostd.log should be checked when the VM unexpectedly powers off.

Reference:

http://kb.vmware.com/selfservice/microsites/search.do?language=en_US&cmd=displayKC&externalId=1019064

NEW QUESTION 126

An administrator is troubleshooting a CPU performance issue for a virtual machine. Which three esxtop counters may demonstrate CPU contention? (Choose three.)

- A. %RDY
- B. %RUN
- C. %MLMTD
- D. %WAIT
- E. %CSTP

Answer: ACE

Explanation: Reference: <https://communities.vmware.com/docs/DOC-9279>

NEW QUESTION 131

An administrator has a virtual machine configured with the following settings:

- ? ESXi version: 5.1
- ? CPU: vCPUs 6
- ? Memory: 48GB
- ? Hardware version: 7
- ? VMware Tools: Installed

Which two actions must the administrator take in order to utilize vNUMA? (Choose two.)

- A. Upgrade the ESXi host to vSphere 5.5 or later.
- B. Upgrade to Virtual Hardware version 8.
- C. Configure numa.vcpu.min to 5
- D. Configure numa.vcpu.min to 6

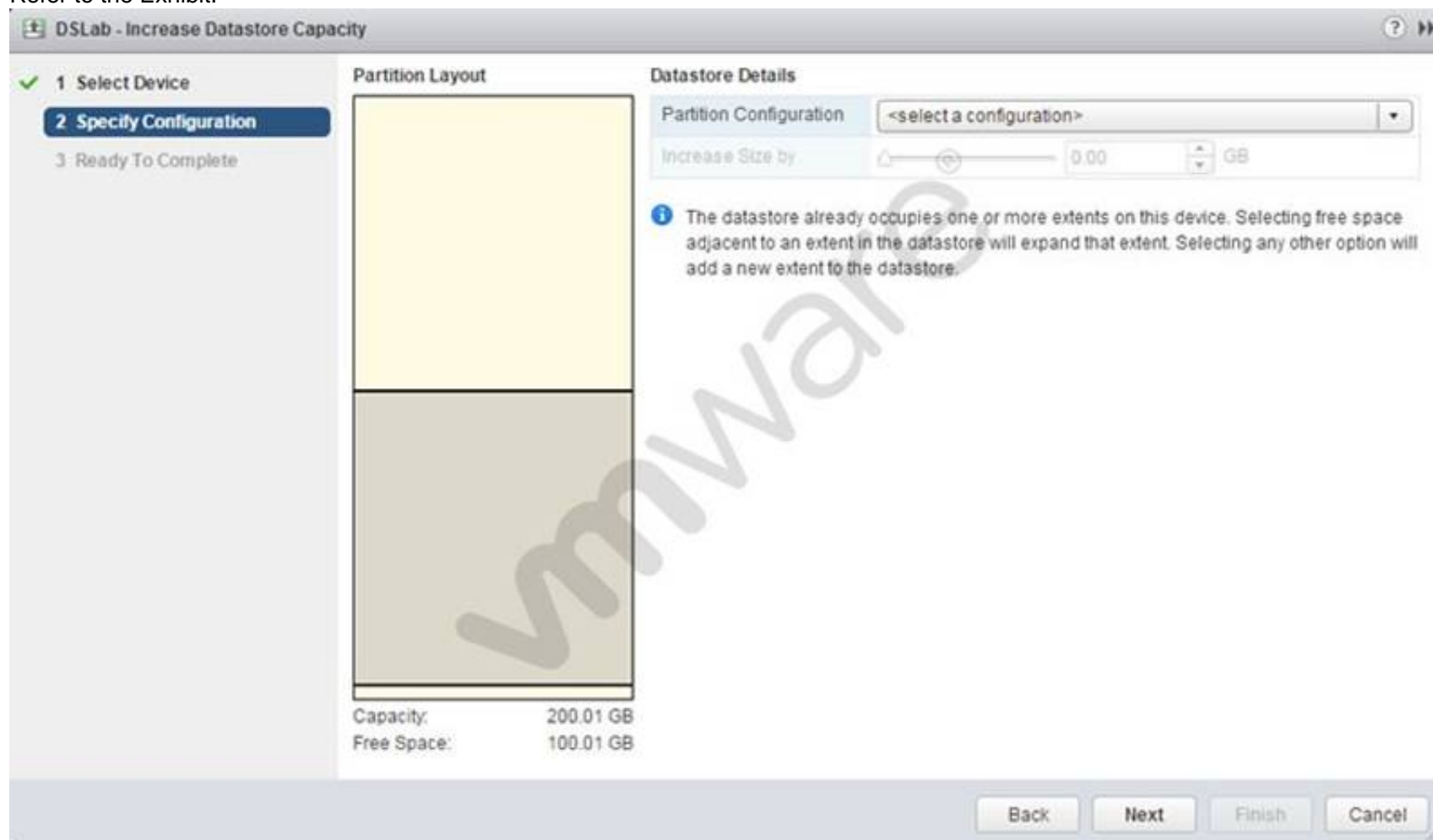
Answer: BC

Explanation: vNUMA can be used by upgrading to virtual hardware version 8. To enable vNUMA on 8 way or smaller VMs, modify the numa.vcpu.min setting.

Reference: <http://community.spiceworks.com/topic/589415-vmware-cpu-settings>

NEW QUESTION 136

Refer to the Exhibit.



An administrator wants to increase the capacity of a VMFS5 datastore; but the Increase Size by slider is not available, as shown in the Exhibit. How should the administrator resolve this problem?

- A. Select a valid partition configuration from the drop-down menu.
- B. Use fdisk utility to manually resize the partition.
- C. Use the mouse to resize the partition indicated in the Partition Layout.
- D. Clicking Next will prompt for available usable space.

Answer: A

Explanation: To increase the capacity of VMFS5 datastore, you can select the drop down menu on the right panel and select a partition configuration that can help increase the capacity.

NEW QUESTION 139

An administrator is unable to patch an ESXi 6.x host using VMware Update Manager. What is an alternative option for patching a host?

- A. Upload the offline bundle to a datastore and execute the command `esxcli software vib install -d` to apply it manually.
- B. Upload the vib to a datastore and execute the command `esxcli software vib install -d` to apply it manually.
- C. Upload the offline bundle to a datastore and execute the command `esxupdate install -v` to apply it manually.
- D. Upload the vib to a datastore and execute the command `esxupdate install -v` to apply it manually.

Answer: A

Explanation: To patch a host, upload the offline bundle to a datastore and use `esxcli software vib install -d` to apply it manually.

Reference: <http://pubs.vmware.com/vsphere-60/topic/com.vmware.vsphere.install.doc/GUID-16B7EA91-03E6-40FA-8C9F-46F3881F1BAF.html>

NEW QUESTION 142

An administrator uses the `df -h` command and notices that an NFS datastore is reporting a capacity of 0 Bytes. What condition would cause this to occur?

- A. The NFS server on which the datastore resides is down.
- B. The datastore was mounted as Read/Write.
- C. The datastore was mounted as Read-Only.
- D. The datastore was created with NFS version 4.1.

Answer: A

Explanation: IF the NFS datastore is showing 0 bytes of capacity when you use `df -h` command, it means that the NFS server that hosts datastore is down.

NEW QUESTION 144

A virtual machine is exhibiting these symptoms:

? Memory usage is constantly high (94% or greater) or constantly low (24% or less).
 ? Free memory is consistently 6% or less and swapping frequently occurs
 Which three solutions could correct this problem? (Choose three.)

- A. Verify that VMware Tools is installed on each virtual machine.
- B. Decrease the memory reservation setting, if higher than active memory.
- C. Add physical memory to the host.
- D. Disable the balloon driver in each virtual machine.
- E. Create a memory limit for each virtual machine.

Answer: ABC

Explanation: Make sure VMware tools are installed on each VM. To weed out the problem, decrease the memory reservation setting if it is higher than active memory or add physical memory to the host to increase its capacity.

NEW QUESTION 146

An administrator wants to select a Host Power Management Policy for an ESXi 6.x host that will disable most hardware power management features. Which Host Power Management Policy should be selected to meet this requirement?

- A. High Performance
- B. Balanced
- C. Low Power
- D. Disabled

Answer: A

Explanation: Reference: <http://www.vmware.com/files/pdf/hpm-perf-vsphere5.pdf>

NEW QUESTION 148

An administrator tries to run `esxtop` to troubleshoot CPU performance issues, but no output is displayed. How can the issue be resolved?

- A. `esxtop` is deprecated in vSphere 6.x, `resxtop` must be used to produce the desired output.
- B. In `esxtop`, press `f` and place an asterisk next to each field that should be displayed.
- C. `sudo` should be run in front of `esxtop` to give the administrator the proper permissions.
- D. The `esxtop` command must be run from the `/proc` directory to produce output.

Answer: B

Explanation: When you press `f` and place an asterisk next to each field that you want displayed, `esxtop` will definitely display performance issues, if any.

NEW QUESTION 150

Refer to the Exhibit.

The number of vSphere HA heartbeat datastores for this host is 1, which is less than required: 2

An administrator receives the error message shown in the Exhibit. Which two actions can be taken to clear the warning? (Choose two.)

- A. Add a Virtual SAN datastore and configure it for High Availability heartbeating.
- B. Set the advanced High Availability parameter `Das.heartbeatdsperhost` to 1.
- C. Set the advanced High Availability parameter `Das.ignoreInsufficientHbDatastore` to true.
- D. Add a shared datastore and reconfigure High Availability.

Answer: CD

Explanation: Reference: http://kb.vmware.com/selfservice/microsites/search.do?language=en_US&cmd=displayKC&externalId=2004739

NEW QUESTION 154

The command `esxcli network vm list` displays four virtual machines connected to the Production vSwitch. Within the vSphere Web Client, five virtual machines are seen. What explains this behavior?

- A. The fifth virtual machine is currently powered off.
- B. The fifth virtual machine has two vNICs.
- C. The fifth virtual machine has an invalid IP address.
- D. The fifth virtual machine has an invalid MAC address.

Answer: A

Explanation: The vSphere client shows all the virtual machines whether they are powered on or off. The fifth virtual machine in this scenario might be powered off. `Esxcli network list` display virtual machines that are active.

NEW QUESTION 155

What are two likely causes for a DRS cluster to become unbalanced? (Choose two.)

- A. Migration threshold is too low.
- B. Affinity rules are preventing virtual machines from being moved.
- C. A device is mounted to a virtual machine preventing vMotion.
- D. Migration cost is too low.

Answer: BC

Explanation: Reference: <https://pubs.vmware.com/vsphere-51/index.jsp?topic=%2Fcom.vmware.vsphere.troubleshooting.doc%2FGUID-0C132C85-E7BF-445E-925D-31420A06B01C.html>

NEW QUESTION 157

Attempting to update an ESXi 6.x host using the following command: `esxcli software vib update -d update.zip`

Generates the following error:

Could not download from depot at /tmp/index.xml, skipping (('tmp/index.xml', "", "[Errno 4] IOError: <urlopen error [Error 2] No such file or directory: 'tmp/index.xml'>")) url =

/tmp/index.xml

What action should be taken to correct the problem?

- A. Add the full file path to the command.
- B. Use the update option instead of install.
- C. Use the switch `-d` instead of `-v`.
- D. Replace `esxcli` with `esxupdate`.

Answer: A

Explanation: You have to add full file path to the command instead of mentioning the file name only.

NEW QUESTION 159

Which two scenarios would cause a Fault Tolerance-enabled virtual machine to fail to power the Secondary virtual machine? (Choose two.)

- A. The host has entered a Network Partitioned state.
- B. vSphere High Availability (HA) is disabled on the host cluster.
- C. Enhanced vMotion Compatibility (EVC) is enabled on the host cluster.
- D. vSphere Distributed Power Management (DPM) is enabled on the host cluster.

Answer: AB

Explanation: Reference:

http://kb.vmware.com/selfservice/microsites/search.do?language=en_US&cmd=displayKC&externalId=1010631

NEW QUESTION 160

An administrator is attempting to enable Fault Tolerance on a virtual machine with 4 vCPUs and observes the following in the vSphere Web Client:

Fault Tolerance has not been licensed on host <hostname>.

What is the minimum licensed edition that supports this configuration?

- A. Enterprise
- B. Enterprise Plus
- C. Standard
- D. Essentials Plus

Answer: A

Explanation: Fault Tolerance is not licensed in all editions of VMware vSphere. Check the edition you are running and upgrade to an edition that includes Fault Tolerance.

Reference: http://kb.vmware.com/selfservice/microsites/search.do?language=en_US&cmd=displayKC&externalId=1033634

NEW QUESTION 164

Which two reasons would prevent Storage Distributed Resource Scheduler (SDRS) from operating on a datastore? (Choose two.)

- A. The datastore has Storage I/O Control disabled.
- B. The datastore is connected to an unsupported host.
- C. The datastore is hosted on an NFS server.
- D. The datastore is hosted on an iSCSI server.

Answer: AB

NEW QUESTION 168

An administrator is troubleshooting network communications between the vCenter Server and the ESXi 6.x host.

Which log shows the interaction events between these components?

- A. /var/log/syslog.log
- B. /var/log/hostd.log
- C. /var/log/vpxa.log
- D. /var/log/fdm.log

Answer: C

Explanation: When an ESXi 5.1 / 5.5 host is managed by vCenter Server 5.1 and 5.5, two components are installed, each with its own logs:
? /var/log/vpxa.log: vCenter Server vpxa agent logs, including communication with vCenter Server and the Host Management hostd agent.
? /var/log/fdm.log: vSphere High Availability logs, produced by the fdm service.

Reference: http://kb.vmware.com/selfservice/microsites/search.do?language=en_US&cmd=displayKC&externalId=2032076

NEW QUESTION 172

An administrator is concerned about possible vCPU over-commitment for an ESXi 6.x host.

Which two Performance Counters should be reviewed in the vSphere Web Client Performance Charts to confirm if there is contention on the host? (Choose two.)

- A. Wait
- B. Ready
- C. Core Utilization
- D. Co-Stop

Answer: BD

Explanation: Reference: <http://www.gabesvirtualworld.com/how-too-many-vcpus-can-negatively-affect-your-performance/>

NEW QUESTION 173

An administrator is attempting to enable Legacy Fault Tolerance (FT) on a virtual machine and observes the following in the vSphere Web Client:
Fault Tolerance has not been licensed on host <hostname>.

What is the minimum licensed edition that supports this configuration?

- A. Standard
- B. Enterprise
- C. Enterprise Plus
- D. Essentials Plus

Answer: A

Explanation: Fault Tolerance is not licensed in all editions of VMware vSphere. Check the edition you are running and upgrade to an edition that includes Fault Tolerance.

Reference: http://kb.vmware.com/selfservice/microsites/search.do?language=en_US&cmd=displayKC&externalId=1033634

NEW QUESTION 178

An administrator is experiencing network connectivity issues between virtual machines. The virtual machines and hosts are configured as follows:

- ? VM1 is running on Host1
- ? VM2 is running on Host2
- ? Both Host1 and Host2 are attached to the vSphere Distributed Switch dvSwitch1
- ? Both Host1 and Host2 are using vmnic0 and vmnic1 on dvSwitch1
- ? Both virtual machines are using the default portgroup for network traffic

What are three settings the administrator should investigate while troubleshooting the connectivity issue? (Choose three.)

- A. VLANs of the physical NICs
- B. Failover order of the uplinks
- C. Virtual NIC connectivity to the dvSwitch
- D. Security policy of the portgroup
- E. Traffic shaping on the portgroup

Answer: ABC

Explanation: To find out connectivity problems, you can use VLANs of the physical NICs, virtual MIC connectivity to the dvswitch and failover orders of the uplinks.

NEW QUESTION 180

An administrator notices that one virtual machine is in an orphaned state.

What are two reasons that a virtual machine can appear as orphaned? (Choose two.)

- A. A VMware High Availability host failure has occurred.
- B. The virtual machine was unregistered directly on the host.
- C. The ESXi host is disconnected.
- D. The user does not have privilege to access the virtual machine.

Answer: AB

Explanation: Virtual machines can become orphaned if a host failover is unsuccessful, or when the virtual machine is unregistered directly on the host. If this

situation occurs, move the orphaned virtual machine to another host in the datacenter that has access to the datastore on which the virtual machine files are stored.

Reference: https://pubs.vmware.com/vsphere-50/index.jsp?topic=%2Fcom.vmware.vsphere.troubleshooting.doc_50%2FGUID-BFD8C9BC-30FB-4A92-AFEC-2FC9FF387920.html

NEW QUESTION 182

An administrator is observing slow performance of the vCenter Inventory Service and observes the entries from the wrapper.log file:
Exception in thread "tomcat-exec-2" java.lang.OutOfMemoryError: Java heap space
Exception in thread "http-bio-0.0.0.0-10443-Acceptor-0" java.lang.OutOfMemoryError: Java heap space
What should the administrator do to resolve the problem?

- A. Increase the memory resources of the vCenter Server.
- B. Increase the values using cloudvm-ram-size.
- C. Increase the memory resources of the Platform Services Controller.
- D. Increase the wrapper.java.maxmemory value in wrapper.conf.

Answer: A

Explanation: Reference: <http://stackoverflow.com/questions/19769675/tomcat-7-outofmemoryerror-from-uncaughtexceptionhandler>

NEW QUESTION 183

When attempting to remove a host from a vSphere Distributed Switch (vDS), an administrator observes the error message:
The resource '16' is in use
What are two reasons why this error would be displayed? (Choose two.)

- A. Vmkernel network adapters on the vDS are in use.
- B. Virtual machine network adapters are connected to the vDS.
- C. Network I/O Control has been configured on the vDS.
- D. There is active network traffic on the vDS.

Answer: AB

Explanation: Reference: <https://pubs.vmware.com/vsphere-55/index.jsp?topic=%2Fcom.vmware.vsphere.troubleshooting.doc%2FGUID-038AC93F-D710-48ED-8E3B-258A23FB2930.html>

NEW QUESTION 184

Users are reporting CPU related performance problems on the virtual machine Email-Prod throughout the day.
The resource settings for the VM and the ESXi host the VM is running on are shown below: VM:
? Email-Prod
? vCPUs: 4
? Memory: 96GB
ESXi host:
? CPU: 2 x 8 Core Processors
? Memory: 128GB
? NUMA architecture. 2 Nodes
Which two options would alleviate the observed performance problem for Email-Prod? (Choose two.)

- A. Enable the advanced parameter Numa.PageMigEnable.
- B. Enable the advanced parameter Numa.AutoMemAffinity.
- C. Enable CPU affinity to separate 2 vCPUs for each NUMA node.
- D. Enable CPU affinity to bind all vCPUs to one NUMA node.

Answer: BC

Explanation: Address the performance problem for email prod by enabling advanced parameter numa.automemaffinity and CPU affinity to separate 2 vCPUs for each NUMA node.

NEW QUESTION 186

When a Content Library is deleted, what happens to the files contained on the backing storage?

- A. The files will be unchanged.
- B. The files will be deleted.
- C. The files will remain and be marked as orphaned.
- D. The containing folder will be marked as orphaned.

Answer: B

Explanation: When the content library is deleted, the files in backup storage will also be deleted.

NEW QUESTION 187

An administrator suspects that the MTU value for a vSphere Standard Switch is misconfigured.
Which two commands can determine the value? (Choose two.)

- A. esxcfg-vswitch -l
- B. esxcli network vswitch standard list
- C. esxcfg-vss -l
- D. esxcli network standard vswitch list

Answer: AB

Explanation: Reference: http://kb.vmware.com/selfservice/microsites/search.do?language=en_US&cmd=displayKC&externalId=1007654

NEW QUESTION 191

A vSphere Web Client task fails while creating a VMFS datastore on a disk with these characteristics:

- ? The disk was formatted with an Master Boot Record (MBR) partition table
 - ? The disk was not erased
 - ? The disk is visible in the vSphere Web Client
- What action needs to be performed to resolve the issue?

- A. Delete the partitions manually with partedUtil.
- B. Create a VMFS3 file system first, then upgrade it.
- C. Create a VMFS5 file system with the command esxcli storage filesystem add.
- D. Delete the data with the vmkfstools command.

Answer: A

Explanation: You can use the partedUtil command line utility to directly manipulate partition tables for local and remote SAN disks on ESXi and ESX. The partedUtil command line only is supported for disk partitioning from ESXi 5.x. The command line utility fdisk does not work with LUNs formatted with VMFS5. Reference: http://kb.vmware.com/selfservice/microsites/search.do?language=en_US&cmd=displayKC&externalId=1036609

NEW QUESTION 193

An administrator is unable to start the vCenter Server service. The vpxd.log file shows this service failure:

[13308 error 'Default' opID=622892-371bf717] CoreDump: Unable to write minidump [13308 error 'Default' opID=622892-371bf717] error -2147024784 : There is not enough space on the disk.

What is preventing the start of the service?

- A. Insufficient space on the vCenter Server
- B. Insufficient space on the Database Server
- C. Insufficient space on the VMFS volume
- D. Insufficient space on the ESXi ramdisk

Answer: A

Explanation: The error states that the service is unable to write mini dump and there is not enough space on the disk, which means that there is an insufficient space on the vCenter Server.

NEW QUESTION 195

What is the name of the High Availability agent log?

- A. fdm.log
- B. ha.log
- C. vpxa.log
- D. aam.log

Answer: A

Explanation: Reference: http://kb.vmware.com/selfservice/microsites/search.do?language=en_US&cmd=displayKC&externalId=2004540

NEW QUESTION 200

Refer to the Exhibit.



ID	GID	NAME	NWLD	%USED	%RUN	%SYS	%WAIT	%VMWAIT	%RDY	%IDLE	%OVRLP	%CSTP	%MLMTD	%SWPWT
20672602	20672602	SlowVM	10	202.81	203.52	0.00	589.96	0.00	163.60	0.00	0.73	61.73	0.00	0.00
20673003	20673003	TestVM	10	199.49	200.02	0.00	599.95	0.07	164.35	0.00	0.66	54.68	0.00	0.00

An administrator is troubleshooting a CPU performance related problem for the SlowVM virtual machine. Which three actions should the administrator take to improve CPU performance for SlowVM? (Choose three.)

- A. Increase the number of vCPUs assigned to SlowVM.
- B. Decrease the number of vCPUs assigned to SlowVM.
- C. Power off other VMs running on the same ESXi host.
- D. Increase the CPU limit for SlowVM.
- E. Move SlowVM to another ESXi host with more physical CPU resources available.

Answer: BCE

Explanation: SlowVM can have increased CPU performance if the number of vCPUs are decreased. Trim down the burden by powering off other VMs running on the same ESXi host or you can move the concerned VM to another ESXi host with more physical CPU resources.

NEW QUESTION 201

What is the name of the command line utility that checks for VMFS5 metadata corruption?

- A. vmkfstools –check
- B. voma
- C. vmfsanalyzer
- D. esxcli vmfs check

Answer: B

Explanation: It is possible to check VMFS for metadata inconsistency with a tool called VOMA (Vmware Ondisk Metadata Analyser). With VOMA you can check VMFS3 and VMFS5 datastores.

Please note, that the tool can only identify problems, as it runs in a read-only mode. So it does not help you to fix detected errors.

Reference: <http://www.running-system.com/how-to-check-vmfs-for-metadata-corruption-esxi-5-1-and-later/>

Topic 8, Deploy and Consolidate vSphere Data Center

NEW QUESTION 202

An administrator is using Auto Deploy to create several ESXi 6.x hosts that will be connected to a vSphere Distributed Switch. After the hosts are deployed, the administrator notices that LACP packets are not being sent between them.

Which statement best describes why this issue is occurring?

- A. LACP is not enabled on the vCenter Server.
- B. The LACP support settings do not exist in the host profile.
- C. The LACP installation bundle is not included in the image profile.
- D. LACP has not been configured on the Auto Deploy server.

Answer: B

Explanation: Link Aggregation Control Protocol (LACP) on a vSphere distributed switch allows network devices to negotiate automatic bundling of links by sending LACP packets to a peer. However, there are some limitations when using LACP with a vSphere-distributed switch.

? LACP only works with IP Hash load balancing and Link Status Network failover detection.

? LACP is not compatible with iSCSI software multipathing.

? vSphere only supports one LACP group per distributed switch, and only one LACP group per host.

? LACP settings do not exist in host profiles.

? LACP between two nested ESXi hosts is not possible.

? LACP does not work with port mirroring.

NEW QUESTION 207

Which two settings are required for Virtual Machine Component Protection (VMCP) to protect from All Paths Down (APD) and Permanent Device Loss (PDL)? (Choose two.)

- A. Host Monitoring
- B. VM Restart Priority
- C. Virtual machine Monitoring
- D. Response for Host Isolation

Answer: AB

Explanation: VM Component Protection (VMCP) is enabled, vSphere HA can detect datastore accessibility failures and provide automated recovery for affected virtual machines. If either the Host Monitoring or VM Restart Priority settings are disabled, VMCP cannot perform virtual machine restarts. Storage health can still be monitored and events can be issued, however.

Reference: <http://pubs.vmware.com/vsphere-60/index.jsp?topic=%2Fcom.vmware.vsphere.avail.doc%2FGUID-F01F7EB8-FF9D-45E2-A093-5F56A788D027.html>

NEW QUESTION 208

An administrator attempts to place a Storage DRS enabled Datastore into Maintenance Mode. The task never completes, and the Entering Maintenance Mode status remains at 1%.

Which two actions should the administrator take to resolve this problem? (Choose two.)

- A. Set the Storage DRS advanced option IgnoreAffinityRulesForMaintenance = 1.
- B. Set the Storage DRS advanced option IgnoreAffinityRulesForMaintenance = 0.
- C. Disable Storage DRS affinity rules associated with this datastore cluster.
- D. Enable Storage DRS affinity rules associated with this datastore cluster.

Answer: AC

Explanation: Reference: <https://pubs.vmware.com/vsphere-51/index.jsp?topic=%2Fcom.vmware.vsphere.troubleshooting.doc%2FGUID-91D4FBBC-0677-44DA-B0F2-43A3504F8CA0.html>

NEW QUESTION 209

An administrator enables High Availability (HA) on a Virtual SAN cluster.
 There are four vmkernel port groups with the following IP addresses assigned:
 ? Management: 192.168.12.10
 ? vMotion: 192.168.13.10
 ? Virtual SAN: 192.168.14.10
 ? Fault Tolerance: 192.168.15.10
 Which IP address will HA use for traffic?

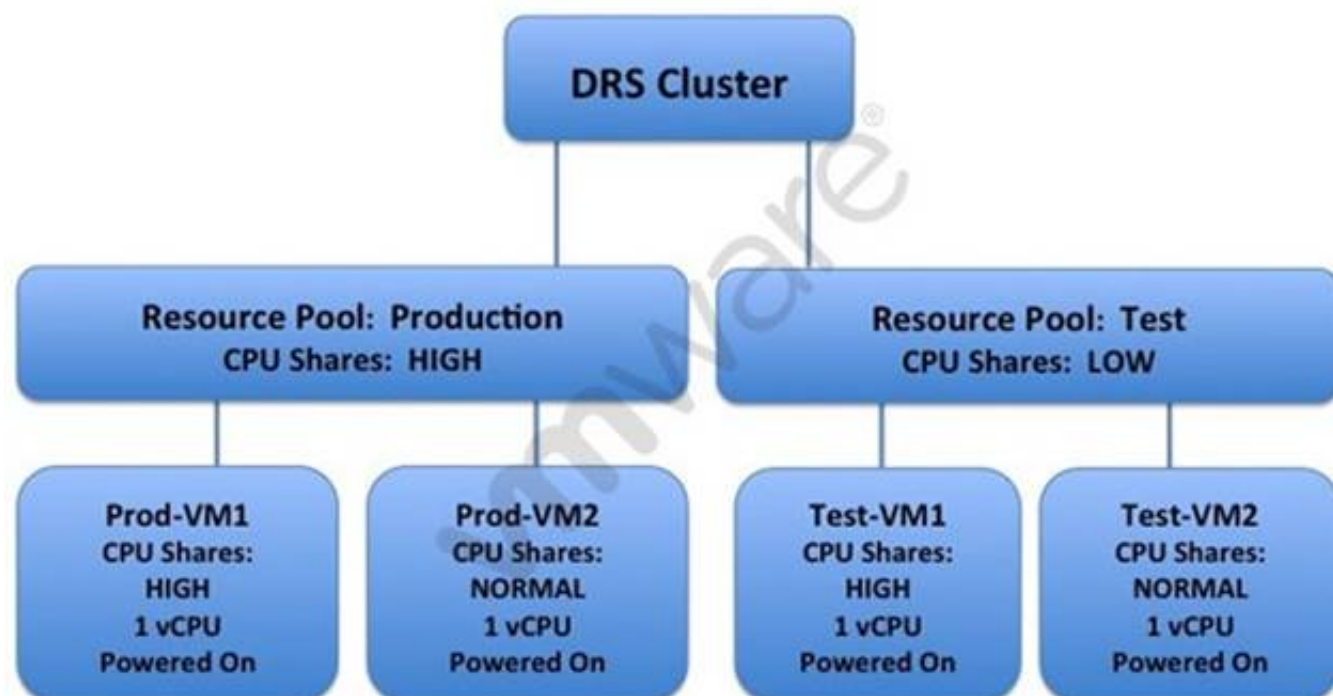
- A. 192.168.12.10
- B. 192.168.13.10
- C. 192.168.14.10
- D. 192.168.15.10

Answer: C

Explanation: Since the IP address of Virtual SAN is 192.168.14.10, HA will use this for traffic because HA uses the original IP of the entity that needs High availability.

NEW QUESTION 211

Refer to the Exhibit.



An administrator has created the DRS cluster shown in the Exhibit. Based on the exhibit, which statement is true?

- A. Under CPU contention, Prod-VM1 receives four times the CPU resources than Test- VM1.
- B. The Prod-VM1 will always have more CPU resources than all other virtual machines.
- C. The Test-VM2 will always have less CPU resources than all other virtual machines.
- D. Under CPU contention, Test-VM1 will receive 25% of the total CPU resources.

Answer: A

Explanation: Prod-VM1 will receive four times the CPU resources the Test-VM1 because the CPU contention is high compared to the test resource pool.

NEW QUESTION 215

In a vSphere High Availability cluster, what is the VM Monitoring I/O stats interval default value?

- A. 60 seconds
- B. 90 seconds
- C. 120 seconds
- D. 180 seconds

Answer: C

Explanation: Occasionally, virtual machines or applications that are still functioning properly stop sending heartbeats. To avoid unnecessary resets, the VM Monitoring service also monitors a virtual machine's I/O activity. If no heartbeats are received within the failure interval, the I/O stats interval (a cluster-level attribute) is checked. The I/O stats interval determines if any disk or network activity has occurred for the virtual machine during the previous two minutes (120 seconds). If not, the virtual machine is reset. This default value (120 seconds) can be changed using the advanced attribute das.iostatsinterval. Reference: https://pubs.vmware.com/vsphere-50/index.jsp?topic=%2Fcom.vmware.vsphere.avail.doc_50%2FGUID-62B80D7A-C764-40CB-AE59-752DA6AD78E7.html

NEW QUESTION 218

An administrator is building a large virtual machine that will require as many vCPUs as the host can support. An ESXi 6.x host has these specifications:
 ? Six 32-core Intel Xeon Processors
 ? 256 GB of Memory
 ? 512 GB Local disk space using VMFS5
 What is the maximum number of virtual CPUs that the virtual machine can be allocated?

- A. 64
- B. 128
- C. 192
- D. 256

Answer: B

Explanation: Reference: <http://www.intel.com/content/dam/www/public/us/en/documents/white-papers/virtualization-xeon-core-count-impacts-performance-paper.pdf>

NEW QUESTION 223

An administrator is planning a vSphere infrastructure with the following specific networking requirements:

- The ability to shape inbound (RX) traffic
- Support for Private VLANs (PVLANS)
- Support for LLDP (Link Layer Discovery Protocol)

What is the minimum vSphere Edition that will support these requirements?

- A. vSphere Essentials Plus
- B. vSphere Standard
- C. vSphere Enterprise
- D. vSphere Enterprise Plus

Answer: D

Explanation: Reference: http://kb.vmware.com/selfservice/microsites/search.do?language=en_US&cmd=displayKC&externalId=1010555

NEW QUESTION 226

An administrator wants to set a non-default isolation address of 192.168.1.2 for High Availability.
 Which advanced setting would accomplish this task?

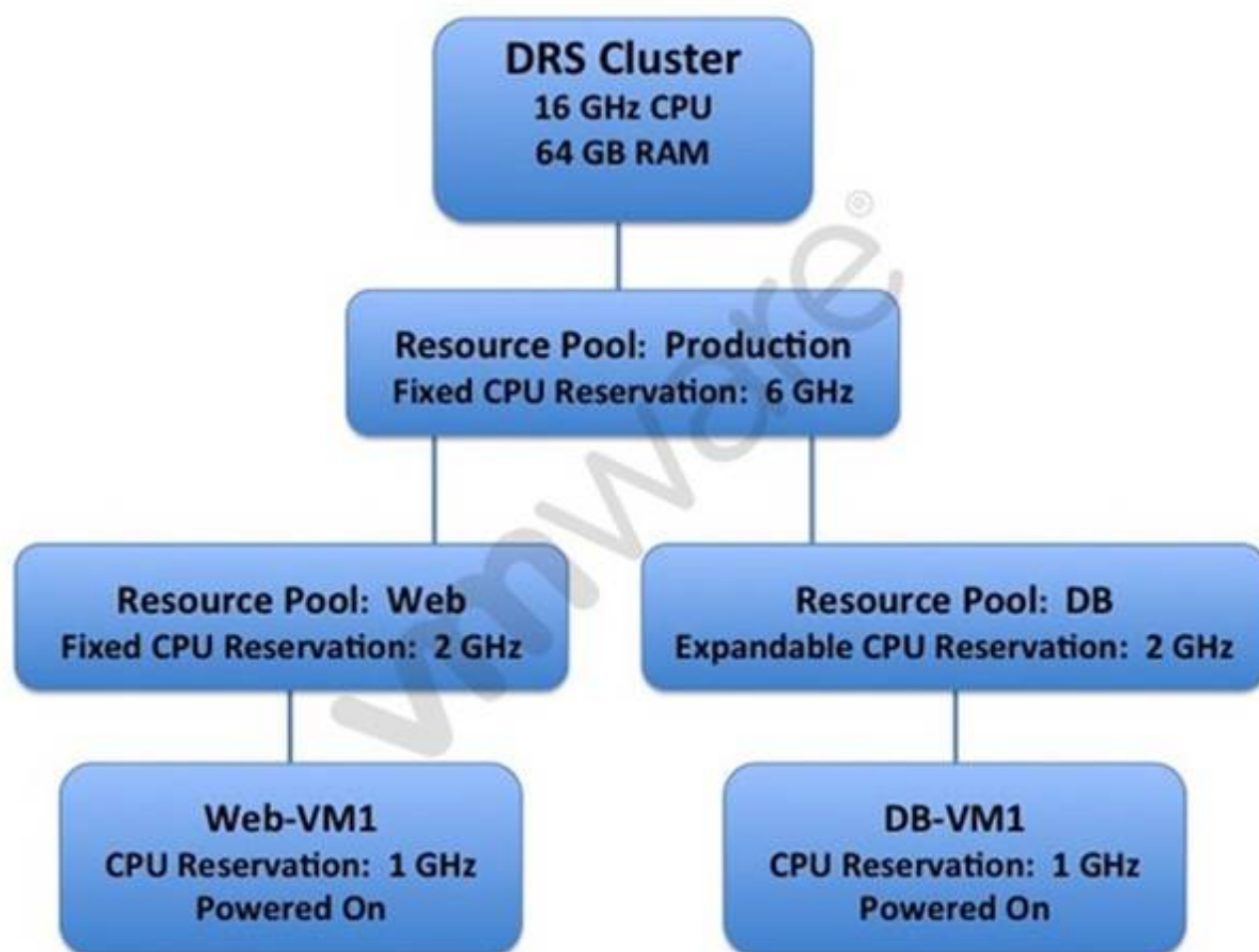
- A. Das.isolationaddress0=192.168.1.2
- B. Das.useisolationaddress0=192.168.1.2
- C. Das.defaultisolationaddress0=192.168.1.2
- D. Das.haisolationaddress0=192.168.1.2

Answer: A

Explanation: Multiple isolation response addresses can be specified using the das.isolationaddress0 through das.isolationaddress0 options.
 Reference: http://kb.vmware.com/selfservice/microsites/search.do?language=en_US&cmd=displayKC&externalId=1002117

NEW QUESTION 227

Refer to the Exhibit.



A vSphere 6.x DRS cluster is configured as shown in the Exhibit. Based on the exhibit, which statement is true?

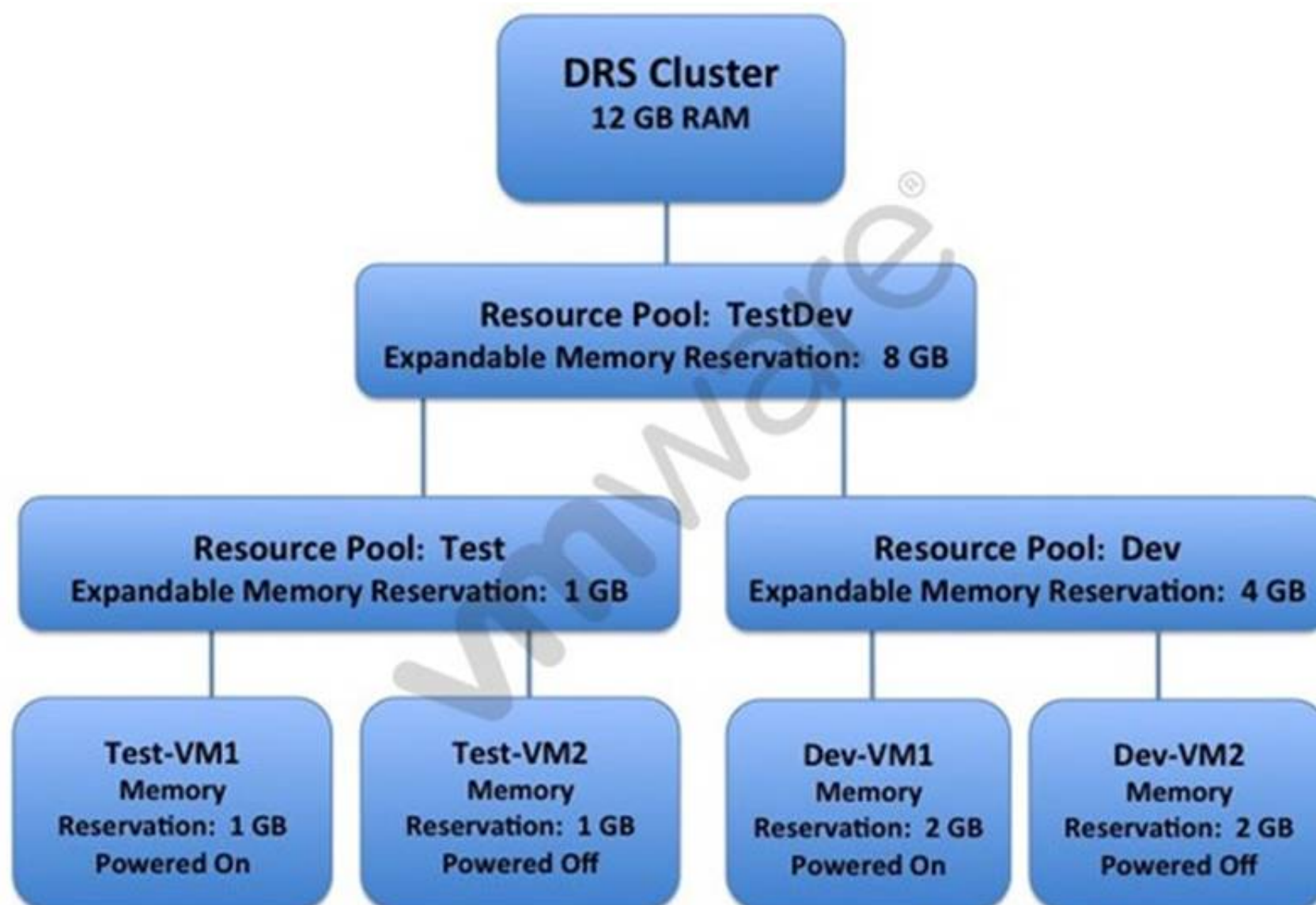
- A. A virtual machine can be powered on in the Web Resource Pool with a 3 GHz CPU Reservation.
- B. A virtual machine can be powered on in the Web Resource Pool with a 4 GHz CPU Reservation.
- C. A virtual machine can be powered on in the DB Resource Pool with a 3 GHz CPU Reservation.

D. A virtual machine can be powered on in the DB Resource Pool with a 4 GHz CPU Reservation.

Answer: C

NEW QUESTION 228

Refer to the Exhibit.



An administrator has configured a vSphere 6.x DRS cluster as shown in the Exhibit. Based on the exhibit, which statement is true?

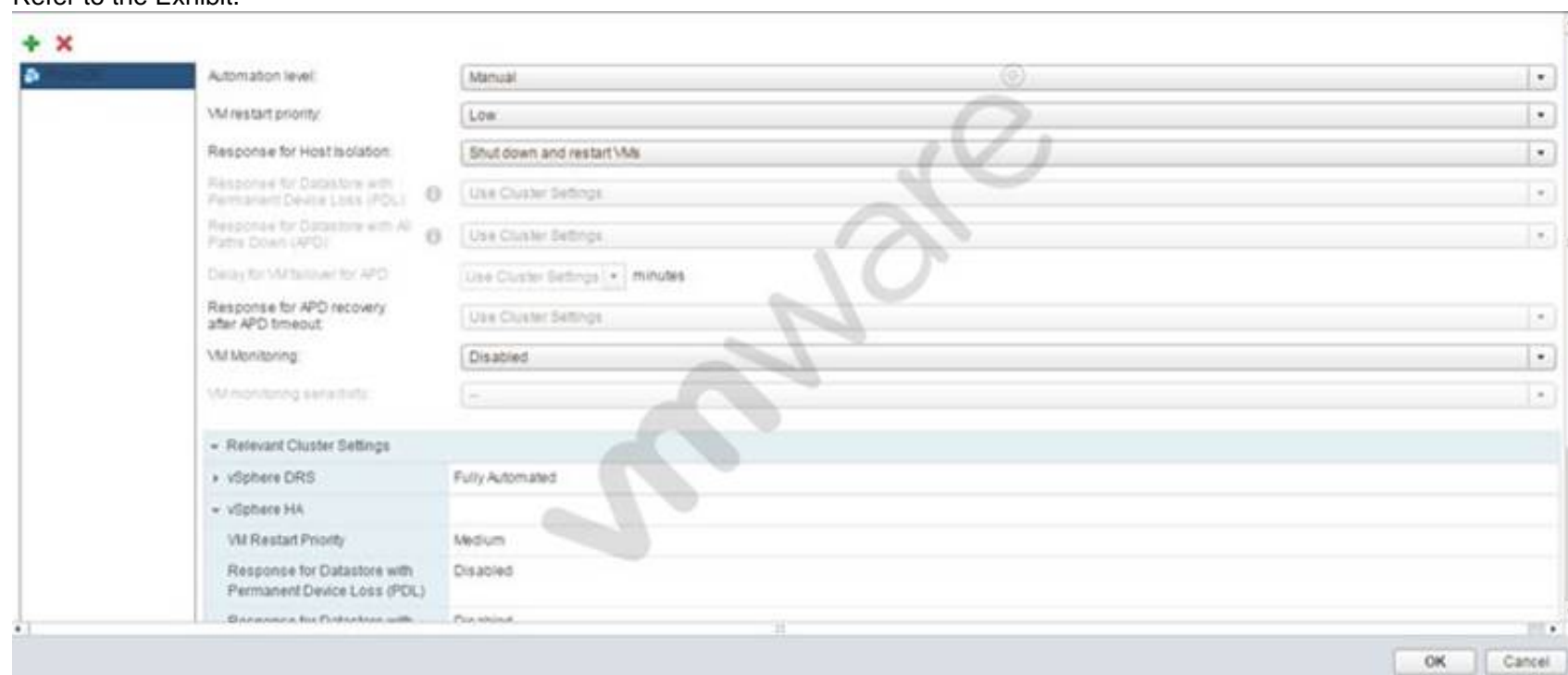
- A. A virtual machine can be powered on in the Test Resource Pool with a 6 GB Memory Reservation.
- B. A virtual machine can be powered on in the Dev Resource Pool with a 8 GB Memory Reservation.
- C. A virtual machine from both the Test Resource Pool and the Dev Resource Pool can be powered on with a 4 GB Memory Reservation.
- D. No more virtual machines can be powered on due to insufficient resources.

Answer: A

Explanation: Using 6 GB reservation, a VM can be powered on in the test resource pool. IT has an expandable memory reservation that can help starta VM in the resource pool.

NEW QUESTION 229

Refer to the Exhibit.



The Prod-DB virtual machine has a VM Override as shown in the Exhibit. What step, it taken, would require all virtual machines in the cluster to migrate automatically?

- A. Deselect the virtual machine from VM Overrides.
- B. Add all virtual machines to the VM Overrides.

- C. Change Response for Host Isolation to Use Cluster Settings.
- D. Change the Automation level to Use Cluster Settings.

Answer: D

Explanation: After you create a DRS cluster, you can customize the automation level for individual virtual machines to override the cluster's default automation level.

For example, you can select Manual for specific virtual machines in a cluster with full automation, or Partially Automated for specific virtual machines in a manual cluster.

If a virtual machine is set to Disabled, vCenter Server does not migrate that virtual machine or provide migration recommendations for it. This is known as pinning the virtual machine to its registered host.

Reference: <https://pubs.vmware.com/vsphere-51/index.jsp?topic=%2Fcom.vmware.vsphere.resmgmt.doc%2FGUID-E83A6B62-37F8-46D0-8D0A-D6A9181979F2.html>

NEW QUESTION 230

When attempting to connect to a vCenter Server, an administrator observes the following at the top of the vSphere Web Client:

Could not connect to one or more vCenter Server Systems: <https://vCenter.corp.com:443/sdk>

What three reasons could be preventing the vSphere Web Client from communicating with this vCenter Server? (Choose three.)

- A. The vCenter Server machine is not responding via the network.
- B. An incorrect entry for this vCenter Server exists in the Single Sign-On service.
- C. The SSL certificates do not match the FQDN address for the server.
- D. The Platform Services Controller is external to this vCenter Server.
- E. The DNS entry for the vCenter Server is incorrect.

Answer: ABC

Explanation: Reference: <https://communities.vmware.com/message/2265668>

NEW QUESTION 232

Which two statements are true regarding upgrading ESXi 6.x hosts using a USB flash drive? (Choose two.)

- A. The ks.cfg file must be available to the ESXi 6.x host during bootup on a TFTP server.
- B. The USB flash drive must be formatted using Fat32.
- C. A partition table must be manually created on the USB flash device.
- D. The USB flash drive must be mounted from a Windows device with sysconfig installed.

Answer: BC

NEW QUESTION 237

An administrator has decided to create 10 ESXi 6.x hosts via Auto Deploy for a new Test/Dev cluster. The hosts are configured to obtain their networking configuration via DHCP.

Which condition would explain why none of the hosts are able to receive a valid DHCP address?

- A. The BIOS DHCP File Name was incorrectly entered on the DHCP server.
- B. The DHCP scope was set too small.
- C. The DHCP lease duration is set too short.
- D. The Boot Server Host Name has been set to the TFTP server.

Answer: A

NEW QUESTION 238

An administrator is configuring an identity source for Single Sign-On. The administrator will use the machine that Single Sign-On is running on, but does not want all users on the machine to be visible to SSO.

Which Identity Source meets this requirement?

- A. Active Directory (Integrated Windows Authentication)
- B. Active Directory as an LDAP Service
- C. OpenLDAP
- D. LocalOS

Answer: A

NEW QUESTION 240

An administrator observes that virtual machine storage activity on an ESXi 6.x host is negatively affecting virtual machine storage activity on another host that is accessing the same VMFS Datastore.

Which action would mitigate the issue?

- A. Enable Storage I/O Control.
- B. Configure Storage DRS.
- C. Enable the Dynamic Queue Depth Throttling option.
- D. Configure the Disk.SchedNumReqOutstanding parameter.

Answer: A

NEW QUESTION 243

An administrator wants to ensure that all datastores defined on an ALUA-based storage array have load balancing enabled by default. The storage configuration is:

- Storage Array Type = VMW_SATP_DEFAULT_AA
- Path Selection Policy = VMW_PSP_FIXED

Which configuration would support the stated requirements?

- A. Change the Storage Array Type Policy to = VMW_SATP_ALUA and the Path Selection Policy = VMW_PSP_RR.
- B. Change the Path Selection Policy = VMW_PSP_RR and leave the Storage Array Type Policy as is.
- C. Change the Storage Array Type Policy to = VMW_SATP_ALUA and leave the Path Selection Policy as is.
- D. Change the Path Selection Policy = NMP and leave the Storage Array Type Policy as is.

Answer: A

NEW QUESTION 246

An administrator wants to clone the configuration of an existing ESXi 6.x host to a new group of hosts, but does not want to clone storage specific settings.

Which action would accomplish this?

- A. Uncheck sub-profile
- B. Remove sub-profile
- C. Revert profile
- D. Disable VM Storage Profile

Answer: B

NEW QUESTION 249

An administrator is configuring resource pools for a vSphere 6.x cluster. The cluster has these characteristics:

- Five ESXi 6.x hosts
- Six cores per host
- 70 virtual machines with 1 vCPU each

The administrator configures three resource pools and places the virtual machines into the pools, as follows:

- Production pool - High Share value with 40 virtual machines
- Infrastructure pool - Medium Share value with 20 virtual machines
- Development pool - Low Share value with 10 virtual machines

Given this configuration, what is the expected performance for each group of virtual machines during contention?

- A. Virtual machines in the Production pool will perform two times as well as those in the Infrastructure pool.
- B. Virtual machines in the Infrastructure pool will perform four times as well as those in the Development pool.
- C. Virtual machines in all resource pools will perform equally.
- D. Virtual machines in the Development pool will perform two times as well as those in the Infrastructure pool.

Answer: C

NEW QUESTION 250

.....

THANKS FOR TRYING THE DEMO OF OUR PRODUCT

Visit Our Site to Purchase the Full Set of Actual 2V0-621D Exam Questions With Answers.

We Also Provide Practice Exam Software That Simulates Real Exam Environment And Has Many Self-Assessment Features. Order the 2V0-621D Product From:

<https://www.2passeasy.com/dumps/2V0-621D/>

Money Back Guarantee

2V0-621D Practice Exam Features:

- * 2V0-621D Questions and Answers Updated Frequently
- * 2V0-621D Practice Questions Verified by Expert Senior Certified Staff
- * 2V0-621D Most Realistic Questions that Guarantee you a Pass on Your FirstTry
- * 2V0-621D Practice Test Questions in Multiple Choice Formats and Updatesfor 1 Year