

## Exam Questions 2V0-620

vSphere 6 Foundations Beta Exam

<https://www.2passeasy.com/dumps/2V0-620/>



#### NEW QUESTION 1

A company has decided to implement Virtual SAN within their vSphere 6.x environment. The Virtual SAN cluster will be composed of three ESXi 6.x hosts that are on the Virtual SAN Ready Node list.

Each ESXi host includes:

- ? Two SAS Controllers that support Passthrough Mode
- ? Four Solid State Drives (SSDs) 1TB in size each
- ? 20 SAS Magnetic Disks (MDs) 1TB in size each
- ? The SSDs and MDs are evenly split between the two SAS controllers

The company will pilot a Virtual SAN cluster utilizing VMware best practices while maximizing storage capacity. The Virtual SAN cluster will use Manual Mode.

Which two Disk Group configurations would meet the stated configuration requirements? (Choose two.)

- A. 4 disk groups with 1 SSD and 5 MDs each
- B. 2 disk groups with 1 SSD and 7 MDs each
- C. 2 disk groups with 2 SSDs and 7 MDs each
- D. 2 disk groups with 1 SSD and 10 MDs each

**Answer:** AB

#### NEW QUESTION 2

Which two Fibre Channel zoning options are supported with vSphere 6.x? (Choose two.)

- A. Single-Initiator
- B. Single-Initiator-Single-Target
- C. Multiple-Initiators-Single-Target
- D. Multiple-Initiators-Multiple-Targets

**Answer:** AB

#### NEW QUESTION 3

What are the three service offerings provided by a VMware-powered public cloud? (Choose three.)

- A. Committed
- B. Transient
- C. Dedicated
- D. Highly Elastic
- E. Basic

**Answer:** ACE

**Explanation:** Reference: <http://www.vmware.com/files/pdf/cloud/VMware-ServiceDef-Public-Cloud-11Q1-White-Paper.pdf> (page 6, see service offerings)

#### NEW QUESTION 4

VMware tools is failing to install on a Microsoft Windows virtual machine.

What are two possible situations that would prevent the installation? (Choose two.)

- A. The VMware tools installation media is corrupt.
- B. The incorrect Operating System was selected in the virtual machine options.
- C. The software prerequisites have not been installed.
- D. The prerequisite services have not been started.

**Answer:** AB

#### NEW QUESTION 5

What are two reasons why a company would choose to use ESXi 6.x instead of using VMware Workstation 8? (Choose two.)

- A. The company needs to be able to assign existing physical disks to virtual machines.
- B. The company needs remote management of virtual machines
- C. The company needs support for virtual machines with up to sixteen vCPUs
- D. The company wants the lowest overhead possible for the virtual infrastructure.

**Answer:** CD

#### NEW QUESTION 6

A vApp template recently added to a Content Library is not displayed.

Which two actions could correct this problem? (Choose two.)

- A. Manually synchronize the library
- B. Select the Download all library content immediately option
- C. Select the Sync subscribed library option
- D. Manually download the vApp template

**Answer:** AB

#### NEW QUESTION 7

An administrator attempts to migrate a suspended virtual machine to a newly deployed vSphere 6.x cluster. The compatibility check fails. What condition could cause this behavior?

- A. The new vSphere 6.x cluster is running Intel CPUs instead of AMD CPUs.
- B. A suspended virtual machine cannot be migrated.
- C. The hardware virtualization feature of the CPU is not enabled on the new hosts.
- D. A vSphere Distributed Switch is required to migrate a suspended virtual machine.

**Answer:** A

#### NEW QUESTION 8

An administrator is trying to open a remote console session to a virtual machine using the vSphere Web Client. With each attempt, an error message is displayed that reads:

HTTP ERROR 404

What is the most likely cause for the error?

- A. Port 902 is blocked by the firewall.
- B. Another program or process is using port 903.
- C. Outgoing UDP is enabled for port 902 on the firewall.
- D. Another program or process is using port 9443.

**Answer:** D

#### NEW QUESTION 9

What is required when changing a virtual machine name using the vSphere Web Client?

- A. Verify connectivity to the ESXi host where the virtual machine is running and its inventory list is accessible.
- B. Verify in which datastore the virtual machine resides and that you have access and its inventory list is accessible.
- C. Verify that virtual machine files are stored in the same datastore and can be accessed in the datastore browser list.
- D. Verify the virtual machine is not running in Fault Tolerant mode and that it is not in a Distributed Resource Scheduler cluster.

**Answer:** A

#### NEW QUESTION 10

An administrator is configuring the Maximum Transmission Unit value on a vSphere Distributed Switch. Which two options are typical values for ESXi networking? (Choose two.)

- A. 1492
- B. 1500
- C. 9000
- D. 9089

**Answer:** BC

#### NEW QUESTION 10

What is the effective vSphere licensing level during the 60 day evaluation period?

- A. vSphere Foundation Essentials Plus
- B. vSphere Standard
- C. vSphere Enterprise
- D. vSphere Enterprise Plus

**Answer:** D

#### NEW QUESTION 11

What must be enabled to ensure that VM Component Protection (VMCP) works in a High Availability cluster?

- A. VMware Tools Virtual Machine Communication Interface (VMCI)
- B. Fault Tolerance
- C. Atomic Test and Set (ATS)
- D. All Paths Down (APD) Timeout

**Answer:** D

#### NEW QUESTION 12

Which two storage controller configurations can be used with Virtual SAN? (Choose two.)

- A. SAS controllers in Passthrough mode
- B. SAS controllers in RAID0 mode
- C. SAS controllers in RAID1 mode
- D. SAS controllers in RAID10 mode

**Answer:** AB

#### NEW QUESTION 17

What virtual machine action listed below can be performed on a template?

- A. Power on
- B. Clone
- C. Edit Settings
- D. Migrate

**Answer:** B

**Explanation:** Reference: <http://robertparten.com/vmware-difference-between-clone-and-template/>

#### NEW QUESTION 21

What is true about resource pools created on a Distributed Resource Scheduler (DRS) cluster?

- A. A root resource pool is created with the specified values.
- B. A root resource pool is automatically created using the aggregate total of the ESXi host resources in the cluster.
- C. A root resource pool is automatically created using the aggregate total of all resources in the datacenter.
- D. A root resource pool is not needed when creating resource pools on a DRS cluster.

**Answer:** B

#### NEW QUESTION 23

Which two allow for the disabling of Network Rollback operations? (Choose two.)

- A. Modifying the vpxd advanced configuration options and adding the config.vpxd.network.rollback key
- B. Modifying the C:\ProgramData\VMware\CIS\cfg\vmware-vpx\vpzd.cfg file and adjusting the <rollback> xml tag
- C. Modifying the C:\ProgramData\VMware\CIS\cfg\vmware-vpx\vpzd.cfg file and adjusting the <networkrollback> xml tag
- D. Modifying the C:\ProgramData\VMware\CIS\cfg\vmware-vpx\firstboot\vpzd-service-spec.prop file and adjusting the <rollback> xml tag

**Answer:** AB

#### NEW QUESTION 25

Which two High Availability (HA) Cluster admission control policies can help avoid resource fragmentation? (Choose two.)

- A. Define failover capacity by static number of hosts
- B. Define failover capacity by reserving a percentage of the cluster resources
- C. Use dedicated failover hosts
- D. Use Virtual Machine Monitoring

**Answer:** AC

#### NEW QUESTION 29

Which two settings are required by the deployment wizard when installing the VMware vCenter Server Virtual Appliance (vCSA)? (Choose two.)

- A. Number of CPUs
- B. Datastore to install on
- C. Linked-mode
- D. Name of the vCenter server

**Answer:** BD

**Explanation:** Reference: <http://pubs.vmware.com/vsphere-51/index.jsp?topic=%2Fcom.vmware.vsphere.install.doc%2FGUID-25FCBA87-5D2F-4CB6-85D7-88899B4AC174.html>

#### NEW QUESTION 31

An administrator has just completed performing an interactive installation of ESXi 6.x and is booting the host. How is the network initially configured?

- A. The network is configured by Automatic Private IP Addressing (APIPA).
- B. The network is configured based on the settings detected in DNS.
- C. The network is configured with the address as specified in the installer.
- D. The network is automatically configured by DHCP.

**Answer:** D

#### NEW QUESTION 32

Which three statements are true regarding Fault Tolerance? (Choose three.)

- A. Applications need to be continuously available to users.
- B. Applications without native clustering capabilities can be protected.
- C. Custom clustering solutions are complicated to configure and maintain.
- D. Applications that have 16 vCPUs are supported.
- E. Prevents application crashes by analyzing the workload and correcting problems.

**Answer:** ABC

### NEW QUESTION 33

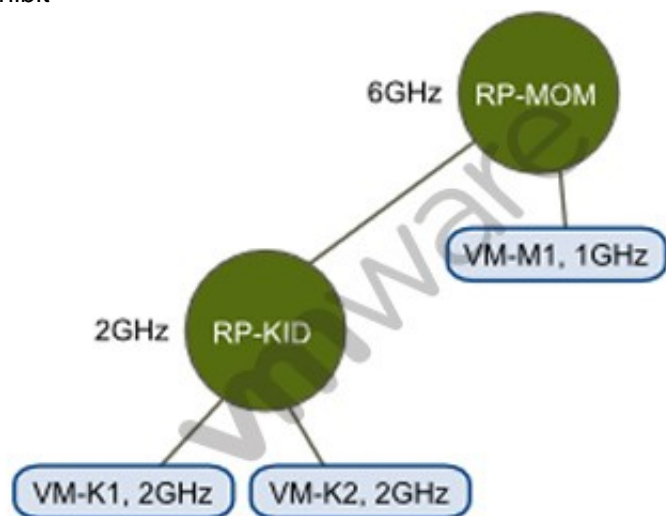
An administrator is performing a scripted installation of ESXi 6.x.  
 In which three locations does the script need to be? (Choose three.)

- A. PXE Server
- B. HTTPS
- C. FTP
- D. NFS
- E. VVOLs Datastore

**Answer:** BCD

### NEW QUESTION 37

Refer to the Exhibit.  
 -- Exhibit --



-- Exhibit --

An administrator has created the resource pool configuration shown in the Exhibit.  
 Based on the exhibit, which virtual machine(s) can be successfully powered on?

- A. VM-M1 only
- B. VM-K1 only
- C. VM-K1 and VM-K2 only
- D. VM-K1, VM-K2, and VM-M1

**Answer:** D

### NEW QUESTION 39

An administrator is installing a new network card in an ESXi 6.x host that is part of a vSphere cluster. When the host is placed into maintenance mode, the vSphere Web Client displays the progress bar at 2% for over 30 minutes.  
 Which two are likely reasons for this occurrence? (Choose two.)

- A. Maintenance mode is unable to migrate all virtual machines from the host.
- B. There is a large number of virtual machines that must be migrated from the host.
- C. VMware High Availability is in the process of reconfiguring the cluster.
- D. Each virtual machine on the ESXi host must be reconfigured to recognize the new adapter.

**Answer:** AB

### NEW QUESTION 44

If you create a custom role and do not assign privileges what system-defined privileges are added? (Choose two.)

- A. System.Anonymous
- B. System.Read
- C. System.Write
- D. System.Administrator

**Answer:** AB

**Explanation:** Reference: <http://pubs.vmware.com/vsphere-51/index.jsp?topic=%2Fcom.vmware.vsphere.security.doc%2FGUID-93B962A7-93FA-4E96-B68F-AE66D3D6C663.html>

### NEW QUESTION 49

Which load balancing policy, previously limited to vSphere Distributed Switches, is now available on vSphere Standard Switches with vSphere 6.x?

- A. Route based on physical NIC workload
- B. Route based on IP Hash
- C. Route based on the originating virtual port
- D. Route based on Source MAC Hash

**Answer:** A

#### NEW QUESTION 53

An administrator is working to update the hosts and virtual machines in a vSphere 5.x deployment using Update Manager Baselines. Other than host patches, which three items require a separate procedure or process to update? (Choose three.)

- A. Operating system patches
- B. Virtual Appliance updates
- C. Virtual Machine Virtual Hardware upgrades
- D. VMware Tools on machines without VMware Tools already installed
- E. Application patches within the virtual machine

**Answer:** ADE

**Explanation:** Operating system patches are related to operating system so they need a separate procedure altogether. Same is the case with VMware tools and applications patches because applications are stand alone pieces of code that need separate procedure to apply a patch.

#### NEW QUESTION 55

A vApp named Sales has a Memory Limit of 32 GB and a CPU Limit of 12,000 MHz. There are three virtual machines within the vApp:

? Sales-DB -- Has a memory reservation of 20 GB.

? Sales-DC -- Has a memory reservation of 8 GB.

? Sales-Web -- Has a memory reservation of 8 GB.

Which statement is correct?

- A. All three virtual machines can power on, but will have memory contention.
- B. All three virtual machines can power on without memory contention.
- C. Only two of the three virtual machines can power on.
- D. Only one of the virtual machines can power on.

**Answer:** C

#### NEW QUESTION 56

An administrator is troubleshooting basic network connectivity issues.

Which two scenarios are potential issues that this administrator might face? (Choose two.)

- A. The vSwitch is not attached to the correct physical network.
- B. The portgroup is not configured to use correct VLAN.
- C. Traffic shaping is configured incorrectly.
- D. Jumbo frames is configured incorrectly.

**Answer:** AB

#### NEW QUESTION 60

What component must be installed prior to deploying a vCenter Server in vSphere 6.x?

- A. vCenter Identity Services
- B. Platform Services Controller
- C. vCenter Single Sign-On
- D. Client Integration Plug-In

**Answer:** B

#### NEW QUESTION 62

Which two badges are major badges in vRealize Operations? (Choose two.)

- A. Risk
- B. Efficiency
- C. Workload
- D. Faults

**Answer:** AB

#### NEW QUESTION 65

A vApp is running out of compute resources when overall activity is high within the resource pool. At other times, everything is fine. What should be done to resolve this issue?

- A. Increase the size of the resource pool Shares.
- B. Set the vApp's CPU and Memory Reservation Type to Expandable.
- C. Set the vApp's CPU and Memory Limit to Unlimited.
- D. Create a new resource pool with the existing hardware configuration.

**Answer:** B

#### NEW QUESTION 70



Which two statements are true about VMFS5 datastores on ESXi 6.x? (Choose two.)

- A. Virtual Disk (VMDK) size can be larger than 2TB.
- B. Datastore extent size can be larger than 2TB.
- C. Only Physical Mode Raw Device Map (Passthrough-RDM) can be larger than 2TB.
- D. 2MB block size is required to support larger than 2TB file size.

**Answer:** AB

#### NEW QUESTION 71

When you add an ESXi 6.x host to a new Cluster, which vSphere object owns the CPU and Memory resources of the hosts?

- A. vCenter Server
- B. Datacenter
- C. Cluster
- D. Host

**Answer:** C

#### NEW QUESTION 74

You want to deploy a vApp and dynamically assign IP addresses without a DHCP server on the network. Which action would you take to accomplish this task?

- A. Enable IP pools.
- B. Configure a local DHCP server in the vApp.
- C. Enable NAT on the vApp router.
- D. Configure the guest OS for workgroup and WINS.

**Answer:** A

#### NEW QUESTION 79

An administrator is only able to see the Health Badge when using the vRealize Operations user interface. What is the likely cause of this behavior?

- A. The vRealize Operations Foundation License is in use.
- B. The vmware-sps service failed to start.
- C. The vRealize Operations Standard License is in use.
- D. The vmware-rbd-watchdog service failed to start.

**Answer:** A

#### NEW QUESTION 80

A mission-critical virtual machine built on vSphere 4.1 needs to be moved to an ESXi6.x host. Which virtual hardware version is needed to move the virtual machine without upgrading?

- A. 6
- B. 7
- C. 10
- D. 11

**Answer:** B

#### NEW QUESTION 82

Which three steps must be taken to use vSphere Update Manager 6.x to upgrade an ESXi 5.5 host to vSphere 6.x? (Choose three.)

- A. Download an ESXi Image.
- B. Configure the vSphere Update Manager Download Service.
- C. Create a baseline and attach it to the ESXi Host.
- D. Scan the vCenter Content Library for the ESXi Image.
- E. Remediate the ESXi Host.

**Answer:** ACE

#### NEW QUESTION 86

When configuring vSphere Replication for a virtual machine, what is the lowest Recovery Point Objective (RPO) that can be selected?

- A. 1 min
- B. 5 min
- C. 10 min
- D. 15min

**Answer:** B

#### NEW QUESTION 87

Which two vCenter plug-ins are installed with a default vSphere Client installation? (Choose two.)

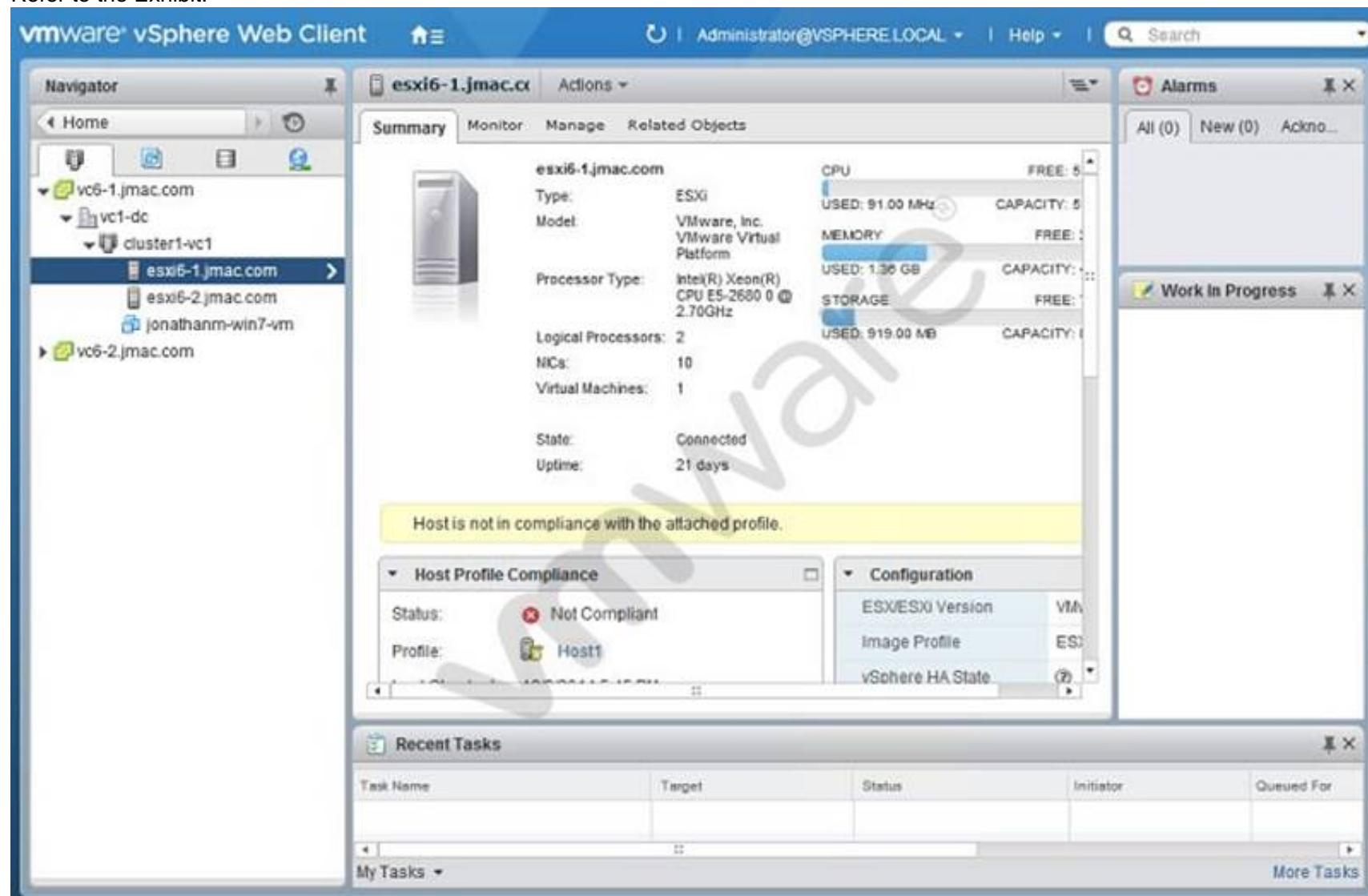
- A. vCenter Hardware Status
- B. VMware ESXi Service Status
- C. VMware vSphere Update Manager
- D. VMware vCenter Storage Monitoring Service

**Answer:** AD

**Explanation:** Reference: <http://pubs.vmware.com/vsphere-51/topic/com.vmware.ICbase/PDF/vsphere-esxi-vcenter-server-51-host-management-guide.pdf> (page 19, first para)

#### NEW QUESTION 89

Refer to the Exhibit.



An administrator logs into the vSphere Web Client and sees the warning shown in the Exhibit. During a change control window, the warning was addressed. What should be done to verify that the host is no longer showing the warning?

- A. Run a Remediate host operation.
- B. Recheck the compliance of the host.
- C. Restart the host to get rid of the warning.
- D. Install VMware tools to clear the warning.

**Answer:** B

#### NEW QUESTION 91

Which scenario shows a reason for VMware Tools failing to install?

- A. Virtual machine has a CD-ROM configured.
- B. Guest OS Antivirus is blocking the VMware Tools installation.
- C. Guest OS has 64-bit ldd (list dynamic dependencies) utility installed.
- D. Virtual machine is powered on.

**Answer:** B

#### NEW QUESTION 94

A virtual machine template is accidentally removed from the vCenter Server Inventory. Which method would be used to recover the template back into the environment?

- A. Use the datastore browser to locate the template, then right click and add the .vmtx file to inventory.
- B. Use the datastore browser to locate the template, then right click and add the .vmx file to inventory.
- C. Using the Managed Object Browser and adding the template from the ManagedObjectReference:GuestFileManager object.
- D. Using the Managed Object Browser and adding the template from the ManagedObjectReference:VirtualDiskManager object.

**Answer:** A



#### NEW QUESTION 96

What is true regarding datastores on ESXi 6.x?

- A. NFS 4.1 datastore does not support Fault Tolerance (FT)
- B. VMFS3 and VMFS5 datastores can be newly created
- C. NFS datastore can be concurrently mounted using NFS 4.1 on one host and NFS on another
- D. NFS 3.0 datastore does not support Fault Tolerance (FT)

**Answer:** A

#### NEW QUESTION 100

An administrator enables High Availability (HA) on a Virtual SAN cluster. Which network is used for HA Network Heartbeat configuration?

- A. The Management network.
- B. The vMotion network.
- C. The Virtual SAN network.
- D. The Provisioning Traffic network.

**Answer:** C

#### NEW QUESTION 102

A vSphere administrator needs to backup a virtual machine that has a Microsoft SQL Server Database installed. Which solution allows for an application quiesce to occur during backup?

- A. VMware vCenter Converter
- B. VMware vCenter Site Recovery Manager
- C. VMware vSphere Replication
- D. VMware vSphere Data Protection Advanced

**Answer:** D

#### NEW QUESTION 104

An administrator is creating a new Virtual SAN cluster on a Layer 2 network. There is an existing Virtual SAN cluster on the same Layer 2 network. Which two actions would allow the new Virtual SAN cluster to coexist with the older cluster? (Choose two.)

- A. Change the default Multicast Address on the new Virtual SAN cluster.
- B. Change the default Unicast Address on the new Virtual SAN Cluster.
- C. Create a separate VLAN for each cluster.
- D. Create an ARP Alias for the Virtual SAN VMkernel Network Adapter.

**Answer:** AC

#### NEW QUESTION 107

An administrator is attempting to migrate a large Hadoop virtual machine using vMotion. The administrator notices a delay when the machine is quiesced. The Hadoop virtual machine is processing many transactions a second to an in-memory database. Which two actions would help reduce the amount of time needed to perform a vMotion on this virtual machine? (Choose two.)

- A. Use multiple NICs for the vMotion vmkernel port.
- B. Use a 10Gbps Network card for the vMotion vmkernel port.
- C. Add an additional management network to help transmit the data quicker.
- D. Disable Fault Tolerance before performing the vMotion.

**Answer:** AB

#### NEW QUESTION 111

Which three are architecture components of vRealize Operations? (Choose three.)

- A. Identity Server
- B. Administrative Server
- C. Analytics Server
- D. Database Server
- E. Connection Broker

**Answer:** BCD

#### NEW QUESTION 114

When would a license server be configured for vCenter Server 5.x?

- A. When managing ESX 3.x servers
- B. When the vCenter Server Virtual Appliance (vCSA) is used
- C. Within the first 60 days
- D. A standalone license server is installed by default

**Answer:** A

**Explanation:** Reference: [http://kb.vmware.com/selfservice/microsites/search.do?language=en\\_US&cmd=displayKC&externalId=1010704](http://kb.vmware.com/selfservice/microsites/search.do?language=en_US&cmd=displayKC&externalId=1010704)

#### NEW QUESTION 118

An administrator is cloning and configuring five new web server virtual machines. What would be the benefit of configuring resource shares for the new VMs?

- A. To prioritize access to a resource during contention.
- B. To guarantee access to a resource during contention.
- C. To prioritize access to a resource before contention occurs.
- D. To guarantee access to a resource before contention occurs.

**Answer:** A

#### NEW QUESTION 123

You are editing the management network configuration of an ESXi 6.x Host from the vSphere Web Client. You mistakenly put the incorrect VLAN in place for the management network. What action do you need to take to correct this?

- A. You need to manually edit the configuration on the host with command line utilities.
- B. No action is require
- C. By default ESXi rolls back configuration changes that disconnect the host.
- D. The ESXi host system configuration will need to be restored to the factory configuration to fix the issue.
- E. The change can be reverted in the vSphere Web Client by simply editing the switch again.

**Answer:** B

#### NEW QUESTION 128

Which two networking connection types can be configured on a virtual switch? (Choose two.)

- A. Virtual machine portgroups
- B. VMkernel services (such as NFS, iSCSI, or vMotion) to the physical network
- C. Web services over the Management Network
- D. NFS and FCoE storage services

**Answer:** AB

#### NEW QUESTION 133

Why are some virtual machines orphaned after rebooting a High Availability (HA) enabled host?

- A. The Orphaned virtual machines have HA restart disabled.
- B. The Orphaned virtual machines moved recently and the change did not persist.
- C. The host is attached to failed storage.
- D. The host just came out of maintenance mode.

**Answer:** A

#### NEW QUESTION 136

Which tool defines the Image Profiles used with Auto Deploy?

- A. The vSphere PowerCLI add-deployrule cmdlet
- B. The vSphere PowerCLI new-deployrule cmdlet
- C. The vSphere CLI add-deployrule command
- D. The vSphere CLI new-deployrule command

**Answer:** B

**Explanation:** Reference: <http://www.vmware.com/files/pdf/techpaper/Whats-New-VMware-vSphere-50-Platform-Technical-Whitepaper.pdf> (page 9, auto deploy rules engine)

#### NEW QUESTION 141

Which two statements are true regarding VMware vSphere Flash Read Cache (vFRC)? (Choose two.)

- A. Cache fills and cache evictions happen in the granularity of a cache block size.
- B. vFRC caches data from both read and write I/Os, but write I/Os are always serviced by the underlying storage.
- C. vFRC caches data from both read and write I/Os, but write I/Os are always serviced by the underlying cache data.
- D. Cache fills and cache evictions happen in the granularity of the disk block size.

**Answer:** AB

#### NEW QUESTION 145

An administrator has unsuccessfully attempted several times to install an Operating System inside a virtual machine. The administrator finds that the installation fails at random intervals.

Which two actions can be taken to resolve this issue? (Choose two.)

- A. Verify the md5sum and if invalid, download the installation files again.
- B. Attempt the installation an additional time.
- C. Attempt to use a different installation media or installation method.
- D. Create a new virtual machine and attempt the installation with the existing media.

**Answer:** AC

#### NEW QUESTION 147

An administrator has been tasked with upgrading an existing host from ESX 4.1 to ESXi6.x. The existing host has only vSwitch0 with all the default settings. The upgraded host will have the following new requirements:

1. 116 virtual machines will be connected.
2. Four uplinks configured for port-based load balancing.
3. The switch will include a secondary heartbeat network for HA. Which two statements are true about this configuration? (Choose two.)

- A. The Service Console Port will be removed during the upgrade
- B. The configuration requires only one VMkernel Port
- C. The default vSwitch0 is sufficient for this configuration
- D. A change to vSwitch0 Properties is required

**Answer:** AD

**Explanation:** VMware has removed the service console port group with the release of vSphere 5. You can execute the same command, which you used to do on vSphere 4 service console using vMA, CLI and PowerCLI.

#### NEW QUESTION 148

An administrator is configuring Network I/O Control for a vSphere 6.x implementation. The physical network adapters in use are 10Gbps. The administrator plans to set up System Traffic and Virtual Machine Reservations as shown in the Exhibit:

System Traffic	Bandwidth Reservation (Gbps)	Virtual Machines	Bandwidth Reservation (Gbps)
Management	1	VM1	2
iSCSI	3	VM2	.5
Virtual Machine		VM3	1
Free	2	VM4	.5

Based on the exhibit, which two statements are true regarding this configuration? (Choose two.)

- A. System traffic is misconfigured as bandwidth reservation for this traffic type cannot exceed 75% of the total available adapter bandwidth.
- B. iSCSI traffic is guaranteed to always have a minimum of 3Gbps of bandwidth.
- C. VM1 will have better network performance than VM2.
- D. Virtual Machine traffic is misconfigured as bandwidth reservation for this traffic type cannot exceed 75% of the total available adapter bandwidth.

**Answer:** BC

#### NEW QUESTION 153

After installation of a host in your test environment, you need to move it to production. The only major change that needs to be made is that the hostname of the server needs to change.

What are two ways that an administrator can change the host name without editing configuration files on the host directly? (Choose two.)

- A. Login to the Direct Console User Interface and change it from here.
- B. Edit the Default TCP/IP Configuration from the vSphere Web Client.
- C. Use the Ruby vSphere Client to send a script to the ESXi host that updates the hostname.
- D. Update the information in DNS and the ESXi host will automatically update with these changes.

**Answer:** AB

#### NEW QUESTION 154

How many Link Aggregation Groups (LAGs) can be configured on a vSphere 6.x Distributed Switch?

- A. 64
- B. 96
- C. 128
- D. 256

**Answer:** A

**NEW QUESTION 156**

An administrator reports that the System Event log data is only available for 24 hours when reviewing the Hardware Status tab. Which condition could be responsible for the loss of data?

- A. A Reset event log was executed.
- B. The statistical collection level was set to a value of 1.
- C. The boot disk of the host is corrupt.
- D. Syslog has been configured at the vCenter Server level.

**Answer:** A

**NEW QUESTION 158**

A virtual machine has been renamed and an administrator is unable to find files with the new virtual machine name in the datastore. What is the reason for this?

- A. The names of the files on the datastore do not change.
- B. The names of the files on the datastore have been corrupted.
- C. The virtual machine needs to be re-added to the inventory.
- D. The Distributed Resource Scheduler moved the virtual machine to another host.

**Answer:** A

**NEW QUESTION 160**

Which three VLAN Tagging modes are available in vSphere 6.x? (Choose three.)

- A. External Switch Tagging
- B. Private VLAN Tagging
- C. Virtual Switch Tagging
- D. VXLAN Tagging
- E. Virtual Guest Tagging

**Answer:** ACE

**NEW QUESTION 165**

An administrator enables vSphere High Availability (HA) on an existing cluster with a large number of hosts and virtual machines. The administrator notices that the setup of vSphere HA on some of the hosts is failing. What step, if taken, might resolve this issue?

- A. Increase the value of the config.vpxd.das.electionWaitTimeSec setting.
- B. Set the value of vpxd.das.aamMemoryLimit to 256.
- C. Set the value of the das.useDefaultIsolationAddress setting to False.
- D. Increase the value of the das.iostatsinterval setting.

**Answer:** A

**NEW QUESTION 166**

You are creating a virtual machine in the Web Client using the New Virtual Machine wizard. Which two steps are required? (Choose two.)

- A. Select a valid name.
- B. Select a cluster for the compute resource.
- C. Select a network adapter.
- D. Select the virtual machine compatibility.

**Answer:** AD

**NEW QUESTION 168**

Refer to the Exhibit.

Physical adapters

Device	Actual Speed	Configured Speed	Switch	MAC Address	Observed IP ranges	Wake on LAN
Intel Corporation 82545EM Gigabit Ethernet Controller (Copper)						
vmnic0	1000 Mb	Auto negotiate	vSwitch0	00:50:56:03:0a:51	10.0.0.8-10.0.0.11	No
vmnic1	1000 Mb	Auto negotiate	vSwitch0	00:50:56:03:3b:61	10.0.0.8-10.0.0.11	No
vmnic2	Down	Auto negotiate	vSwitch1	00:50:56:03:44:ed	10.0.0.8-10.0.0.11	No
vmnic3	1000 Mb	Auto negotiate	vSwitch1	00:50:56:03:0e:0f	10.0.0.8-10.0.0.11	No
vmnic4	1000 Mb	Auto negotiate	--	00:50:56:03:17:a3	10.0.0.8-10.0.0.11	No

Physical network adapter: vmnic0

All Properties CDP LLDP	
Adapter	Intel Corporation 82545EM Gigabit Ethernet Controller (Copper)
Name	vmnic0
Location	PCI 0000:02:00.0
Driver	e1000

An administrator is configuring an ESXi 6.x host to use multiple NICs to resolve a management network redundancy error. After configuring a second NIC, the server is not able to communicate when the primary connection is taken down. The administrator analyzes the Exhibit shown here. Based on the exhibit, what is the likely cause of the issue?

- A. vmnic4 is not attached to a vSwitch.
- B. vmnic2 is not connected to a physical switch.
- C. E1000 is the incorrect NIC Driver for this card.
- D. There is a MAC address conflict on the network.

**Answer:** B

#### NEW QUESTION 169

What differentiates a private cloud from a vSphere Infrastructure?

- A. A private cloud requires pooled resources including storage and networking.
- B. vSphere Infrastructure assumes a secure location for the workloads.
- C. vSphere Infrastructure allows consumption of resources over open standards.
- D. A private cloud assumes the consumer will maintain their portion of the infrastructure.

**Answer:** A

**Explanation:** Since private cloud requires pooled resources which includes storage and networking, it is different from vSphere infrastructure that doesn't require pooled resources.

#### NEW QUESTION 173

An attempt to enable vSphere Fault Tolerance for a powered-on virtual machine fails. Which two scenarios would result in this failure? (Choose two.)

- A. The virtual machine has three vCPUs configured.
- B. The host on which the virtual machine is running has insufficient memory resources.
- C. The virtual machine has insufficient resources to accommodate full reservation plus the overhead memory.
- D. VMware High Availability is enabled on the cluster of which this host is a member.

**Answer:** BC

#### NEW QUESTION 176

An administrator is setting up vSphere Auto Deploy to deploy 25 ESXi 6.x hosts using the vCenter Server Virtual Appliance (vCSA). What would be considered best practices for Auto Deploy? (Choose three.)

- A. Enable vSphere HA on the cluster.
- B. Protect the vCenter server with Fault Tolerance.
- C. Install the Auto Deploy service on the VCSA.
- D. Include the vmware-fdm VIB in the image profile.
- E. Use PowerCLI to write a rule that assigns a custom image profile to the target hosts.

**Answer:** ADE

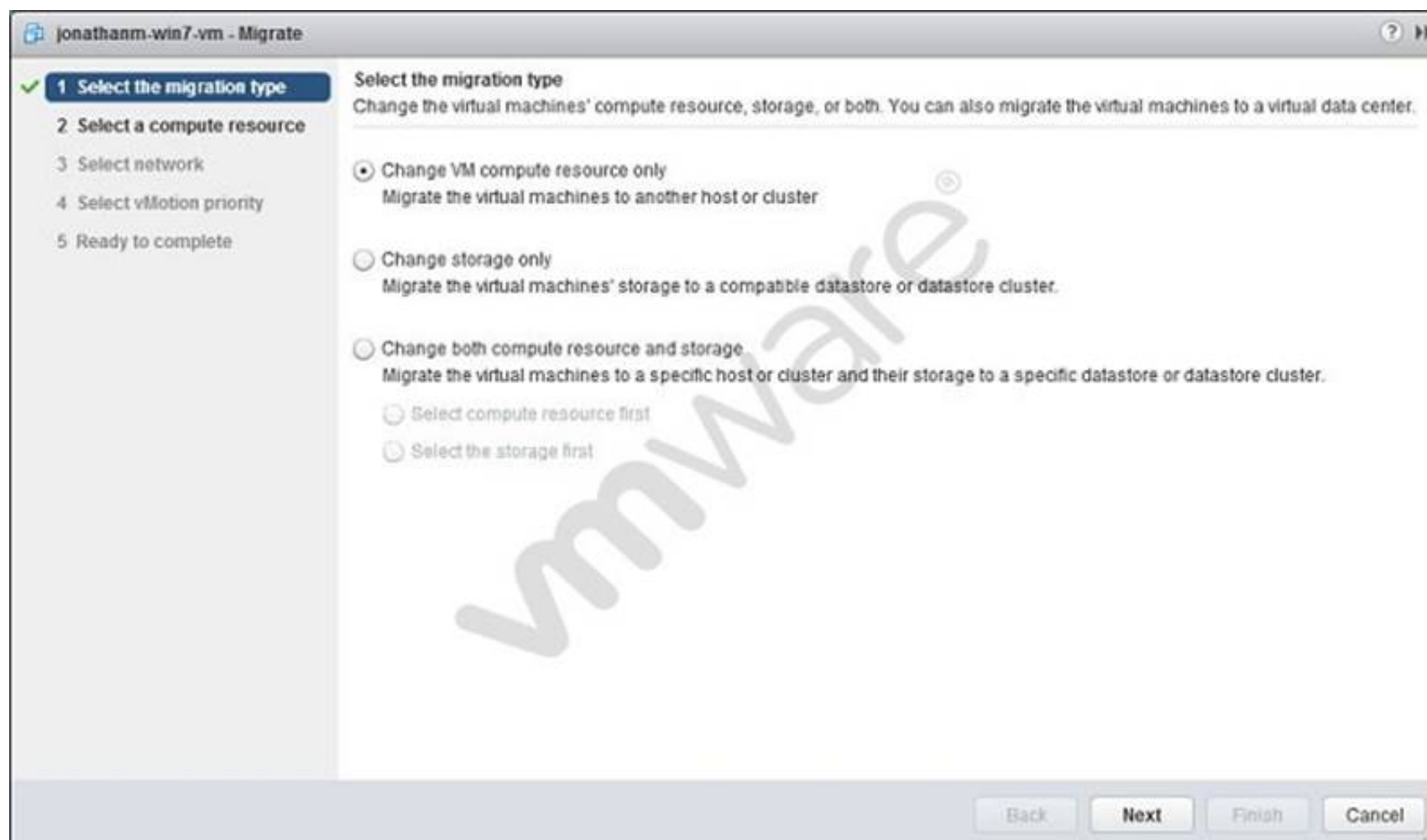
**Explanation:** Reference:

[http://pubs.vmware.com/vsphere-50/index.jsp?topic=%2Fcom.vmware.vsphere.install.doc\\_50%2FGUID-980D9E38-633E-4557-9144-AC422FA239C5.html](http://pubs.vmware.com/vsphere-50/index.jsp?topic=%2Fcom.vmware.vsphere.install.doc_50%2FGUID-980D9E38-633E-4557-9144-AC422FA239C5.html)

#### NEW QUESTION 181

Refer to the Exhibit.





An administrator is migrating a powered-on virtual machine, as shown in the exhibit.  
 Which option should be selected to perform a Storage vMotion of the VM?

- A. Change storage only
- B. Change VM compute resource only
- C. Change both compute resource and storage, changing the compute resource first.
- D. Change both compute resource and storage, changing the storage resource first.

**Answer:** A

#### NEW QUESTION 183

In order for a company to meet regulatory requirements, all ESXi 6.x Hosts must be configured to direct logs to a syslog server.  
 What are two ways ESXi hosts can configured for this action? (Choose two)

- A. Use the esxcli system syslog command.
- B. Edit them in the ESXi host Advanced System Settings.
- C. From the Syslog collector user interface of the Web Client.
- D. Syslog logging is not available for ESXi Hosts.

**Answer:** AB

#### NEW QUESTION 185

An administrator is monitoring a High Availability (HA) and Distributed Resource Scheduler (DRS) enabled cluster and has noticed that virtual machines in the cluster are being migrated without user intervention.  
 Why is this happening?

- A. The DRS Automation level is set to Fully Automated.
- B. The Automation level is set to Automatic.
- C. The DPM Threshold is set to Aggressive.
- D. The Power Management feature is configured.

**Answer:** A

#### NEW QUESTION 190

What are three goals of resource management within a cluster? (Choose three.)

- A. To prevent virtual machines from monopolizing resources and to guarantee predictable service rates.
- B. To exploit undercommitted resources and overcommit with graceful degradation.
- C. To provide solutions to potential problems that you might encounter when using vCenter Server.
- D. To control the relative importance of virtual machines and provide flexible dynamic partitioning.
- E. To provide additional network administration capabilities.

**Answer:** ABD

#### NEW QUESTION 194

An administrator is attempting to remove an ESXi 6.x host from a vSphere Distributed Switch (vDS). When the administrator attempts to remove the host, the following error is observed:

The resource '16' is still in use.

What three steps are needed to successfully remove the host from the switch? (Choose three.)

- A. Select Manage Ports on the vDS for the host.
- B. Locate all ports currently in use on the vDS for the host.
- C. Migrate or delete any vmkernel or virtual machine adapters associated with the switch.
- D. Remove all network cards from the switch before trying to remove the host.
- E. Create a standard switch for everything to be automatically be migrated to.

**Answer:** ABC

#### NEW QUESTION 195

A company is planning an upgrade from vSphere 4.x to vSphere 5. They currently have three dual CPU servers licensed for ESXi 4.1 Advanced. Each server has 256GB of RAM installed.

Their virtual machines are sized three ways. Light. 1v CPU, 4GB RAM

Medium. 2v CPU, 8GB RAM Heavy. 4 vCPU, 12GB RAM

The Production workload consists of. 20 Light servers

20 Medium servers

2 Heavy servers

The Development workload consists of. 10 Light servers

10 Medium servers

How will vSphere 5 licensing impact their upgrade? (Choose two.)

- A. They will need to purchase additional ESXi licenses.
- B. They will be able to reduce their power consumption.
- C. They will be restricted from powering on additional virtual machines.
- D. A license upgrade will be needed to add vCPUs to the Heavy servers.

**Answer:** BC

**Explanation:** Reference: <http://www.gabesvirtualworld.com/vsphere-5-licensing-with-vram-isn%E2%80%99t-that-bad-at-all/>

#### NEW QUESTION 198

After selecting an object in vRealize Operations, how can a user compare the badge values of related child objects?

- A. Use the Scoreboard tab
- B. Use the Relationship tab
- C. Use the Members tab
- D. Use the Overview tab

**Answer:** A

#### NEW QUESTION 203

Which type of Adapter does not require vmkernel networking?

- A. Independent Hardware iSCSI Adapter
- B. Dependent Hardware iSCSI Adapter
- C. Software iSCSI Adapter
- D. Software FCoE Adapter

**Answer:** A

#### NEW QUESTION 205

An administrator is installing vCenter Server for an environment that has 40 ESXi 6.x Hosts and 150 virtual machines.

Which database would meet the minimal requirements needed for this task?

- A. vFabric Postgres
- B. Microsoft SQL Express 2008
- C. Microsoft SQL Server 2014
- D. Oracle 11g

**Answer:** C

#### NEW QUESTION 206

What are two ways to identify TCP/IP stack information? (Choose two.)

- A. Using the vSphere Web Client
- B. Using esxcli network ip netstack
- C. Using esxcfg-netstack
- D. Using the vSphere Client

**Answer:** AB

#### NEW QUESTION 208

An administrator is attempting to restore a number of files in a directory within the Operating System of a virtual machine.

How can the administrator restore the files from a previous backup?

- A. Use the File Level Restore option from the selected backup of the virtual machine in the vSphere Web Client.
- B. Connect to the File Level Restore tool from a web browser in the virtual machine.

- C. Connect to the File Level Restore tool from the VMware Data Protection appliance.
- D. Use the File Level Restore option from the selected backup of the virtual machine in the vSphere Client.

**Answer:** B

#### NEW QUESTION 210

An administrator would like to have vCenter take action any time a virtual machine is using over 90% of its available resources for five minutes or longer. Which three actions can be taken by vCenter Server in response to the trigger without running a script? (Choose three.)

- A. Power on a VM
- B. Reboot Guest on VM
- C. Increase Virtual Machine Memory
- D. Migrate a VM
- E. Increase Virtual Machine CPU Shares

**Answer:** ABD

**Explanation:** Power on a VM, reboot guest and Migrate a VM will be the actions taken by vCenter Server in response to a trigger without needing a script.

#### NEW QUESTION 213

Which functions can be performed with the Plug-in Manager? (Choose two.)

- A. Enable an installed plug-in
- B. Remove permissions for a plug-in
- C. View the status of installed plug-ins
- D. Uninstall a plug-in

**Answer:** AC

**Explanation:** Reference: [http://www.kumatech.ca/download/docs/110\\_6081-EN\\_R3\\_HIT\\_VE\\_Installation\\_Guide\\_web.pdf](http://www.kumatech.ca/download/docs/110_6081-EN_R3_HIT_VE_Installation_Guide_web.pdf) (page 13)

#### NEW QUESTION 216

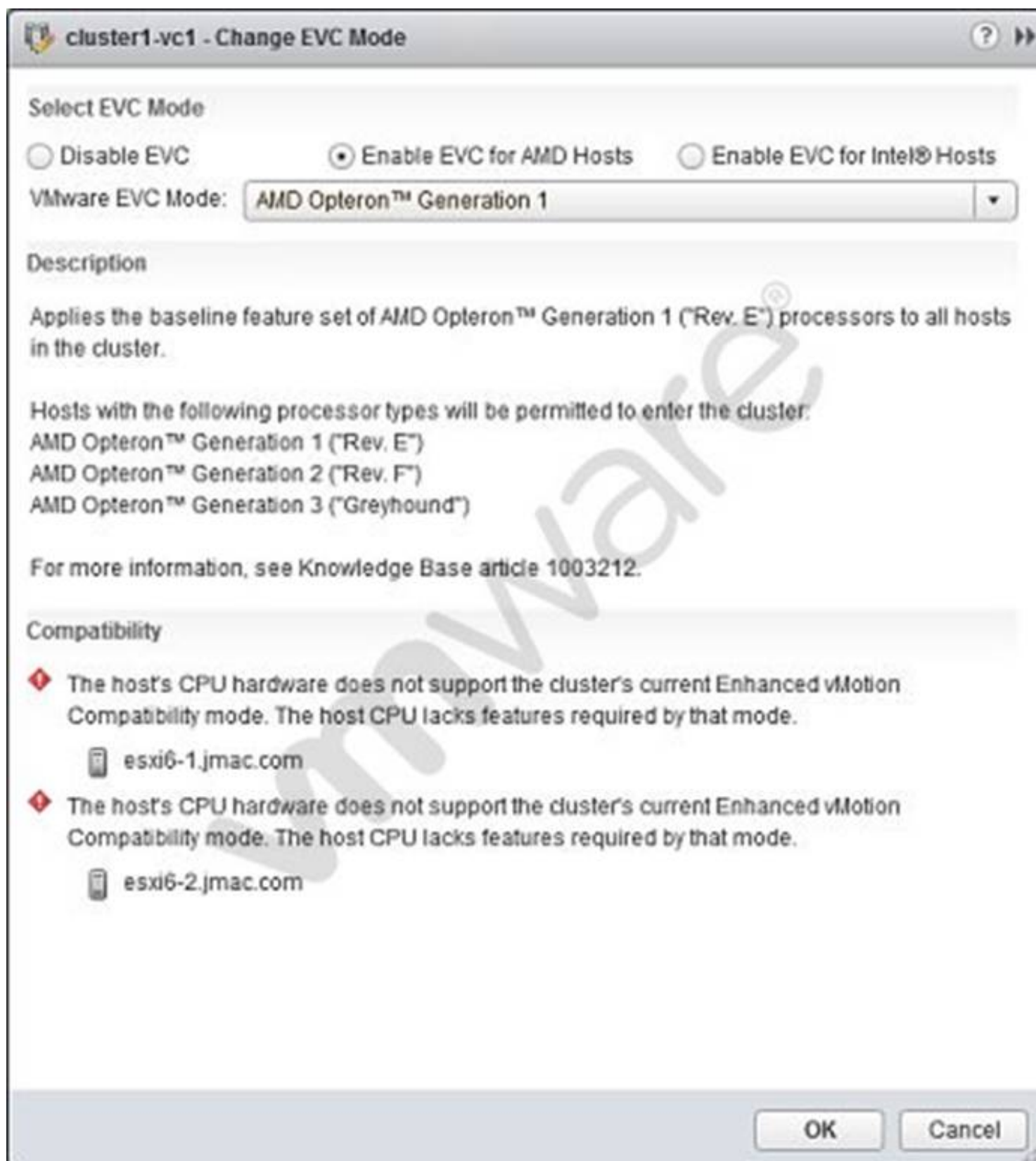
Which vSphere 6 Enterprise Edition feature will allow an organization to ensure that critical multi-threaded applications have the maximum possible uptime?

- A. Fault Tolerance
- B. High Availability
- C. Distributed Resource Scheduler
- D. App HA

**Answer:** A

#### NEW QUESTION 218

Refer to the Exhibit.



-- Exhibit --

An administrator attempts to enable Enhanced vMotion Compatibility (EVC) on a cluster. The operation results in a compatibility error, as shown in the exhibit. What is the likely cause of this error?

- A. The CPUs in the ESXi host are not AMD CPUs.
- B. The CPUs in the ESXi host do not support hardware virtualization capabilities.
- C. The XD/NX CPU features have not been enabled in the BIOS of the server.
- D. There is no shared storage between the hosts in the cluster.

**Answer:** A

#### NEW QUESTION 222

Which two SMTP Notification Event Details are specific to alarms triggered by events? (Choose two.)

- A. User Name
- B. Summary
- C. Old Status
- D. Target

**Answer:** AB

#### NEW QUESTION 225

An administrator deploys vRealize Operations into a vSphere 6.x environment. After the deployment, the administrator notices that badges are not appearing. What is a likely cause of this behavior?

- A. Badges do not appear until you register vRealize Operations with vCenter Server.
- B. Badges do not appear until you register a vCenter Server in vRealize Operations.
- C. The vRealize Operations appliance needs to be redeployed.
- D. The vCenter Server appliance needs to be redeployed.

**Answer:** A

#### NEW QUESTION 226

An administrator plans to use an upgrade script to upgrade a number of ESXi 6.x hosts. What options are available for the kickstart file? (Choose two.)

- A. dryrun - Parse and check script but does not install
- B. overwritevmfs - permits overwriting of existing VMFS volumes
- C. vcenter - specifies vCenter Server
- D. autodeploy - defines autodeploy options

**Answer:** AB

**Explanation:** Reference: [http://kb.vmware.com/selfservice/microsites/search.do?language=en\\_US&cmd=displayKC&externalId=2004582](http://kb.vmware.com/selfservice/microsites/search.do?language=en_US&cmd=displayKC&externalId=2004582)

#### NEW QUESTION 229

What are two prerequisites for installing the vCenter Server application? (Choose two.)

- A. The system vCenter Server is installed on must be a physical machine.
- B. A valid vSphere vCenter license must be obtained before installation.
- C. vCenter must be in the same network as the hosts if supporting vSphere Storage Appliance Cluster.
- D. The system vCenter Server is installed on cannot be a domain controller.

**Answer:** CD

**Explanation:** Reference: [https://pubs.vmware.com/vsphere-4-esx-vcenter/index.jsp?topic=/com.vmware.vsphere.installclassic.doc\\_41/common/install/c\\_vc\\_pre.html](https://pubs.vmware.com/vsphere-4-esx-vcenter/index.jsp?topic=/com.vmware.vsphere.installclassic.doc_41/common/install/c_vc_pre.html)

#### NEW QUESTION 234

An administrator is unable to create the first group in a new vRealize Operations environment. What is the likely cause of the problem?

- A. There are no group types defined.
- B. The group is not defined in SSO.
- C. There are more than 32 group types defined.
- D. The description for the group is not provided.

**Answer:** A

#### NEW QUESTION 237

An administrator needs to monitor traffic on vSwitches in a vSphere 6.x environment. Which option, if configured, would accomplish this task?

- A. Forged Transmits
- B. MAC Address Changes
- C. Promiscuous Mode
- D. Notify Switches

**Answer:** C

#### NEW QUESTION 242

An administrator must determine an appropriate backup solution, given these conditions:

? 50 of the virtual machines are in a resource pool named Finance.

? 50 of the virtual machines are in a resource pool named QA.

Which solution allows an administrator the ability to backup 100 virtual machines?

- A. Use Snapshot Manager on the vCenter Server to backup the virtual machines.
- B. Use the VMware Consolidated Backup (vcb) tool on the ESXi Host to backup the virtual machines.
- C. Use the VMware Data Recovery (VDR) Appliance on the vCenter Server to backup the virtual machines.
- D. Use the VMware Data Protection (VDP) Appliance on one of the ESXi Hosts to backup the virtual machines.

**Answer:** D

#### NEW QUESTION 245

A physical Windows 2008 R2 Server is converted to a virtual machine using VMware vCenter Converter. Upon completion of the conversion and subsequent power on operation, the virtual machine fails to boot and the message below is observed in the Console of the virtual machine:

STOP 0x0000007B INACCESSIBLE\_BOOT\_DEVICE

Which two potential issues may be causing this boot failure? (Choose two.)

- A. An incorrect SCSI controller was selected during conversion.
- B. Incompatible software drivers were migrated into the virtual machine from the source machine.
- C. The vmdk file backing the virtual machine was thick provisioned.
- D. A snapshot was taken immediately after the conversion completed.

**Answer:** AB



#### NEW QUESTION 246

Which three features can be enabled for a new host cluster? (Choose three.)

- A. Storage Distributed Resource Scheduling
- B. High Availability
- C. Fault Tolerance
- D. Distributed Resource Scheduling
- E. Virtual SAN

**Answer:** BDE

#### NEW QUESTION 248

Which three operations occur during a cold migration of a virtual machine? (Choose three.)

- A. The virtual machine disks are moved if the datastore is being changed.
- B. The virtual machine is registered with the destination server.
- C. The source virtual machine is removed from the old hosts.
- D. The virtual machine hardware is upgraded.
- E. The virtual machine files are quiesced prior to the migration.

**Answer:** ABC

#### NEW QUESTION 252

Which two configurable options apply to both virtual machine CPU and memory allocation? (Choose two.)

- A. Reservation
- B. Shares
- C. Resource Pool
- D. Reserve All

**Answer:** AB

#### NEW QUESTION 256

Which two events happen when Distributed Resource Scheduler (DRS) is disabled? (Choose two.)

- A. The cluster's resource pool heirarchy and affinity rules are re-established when DRS is turned back on.
- B. The cluster's resource pool hierarchy and affinity rules are not re-established when DRS is turned back on.
- C. The cluster's resource pools are removed from the cluster.
- D. The cluster's resource pools are removed from the cluster and assigned to the hosts.

**Answer:** BC

#### NEW QUESTION 258

Which three conditions would prevent Storage I/O Control from being enabled on a group of datastores? (Choose three.)

- A. The datastores planned for the solution are used by different vSphere clusters.
- B. A datastore planned for the solution is configured as a Raw Device Mapping file.
- C. A datastore planned for the solution has three extents.
- D. A datastore planned for the solution is configured as NFS.
- E. The organization has an Enterprise license.

**Answer:** BCE

#### NEW QUESTION 262

An administrator receives a report that no real time statistics are available for a virtual machine in the vCenter Server inventory. Which two statements indicate likely causes of the problem? (Choose two.)

- A. The virtual machine is powered off.
- B. The host containing the virtual machine is disconnected from vCenter Server.
- C. There is insufficient real time data to display the information.
- D. The vCenter Server service is not running.

**Answer:** AB

#### NEW QUESTION 264

An administrator configures vSphere Replication for a virtual machine and enables multiple point in time (PIT) instances under the recovery settings in the Configure Replication wizard.

Which two statements are correct for vSphere Replication with multiple point in time instances enabled? (Choose two.)

- A. vSphere Replication retains a number of snapshot instances of the virtual machine on the target site based on the retention policy that you specify.
- B. vSphere Replication uses the virtual machine's snapshot instances to define the target site Point in Time instance based on the retention policy that you specify.
- C. vSphere Replication does not support virtual machines with snapshots.
- D. vSphere Replication supports virtual machines with snapshots.

**Answer:** AC

#### NEW QUESTION 266

You need to add an object to an existing vApp using the vSphere Web Client. How is this accomplished?

- A. Create an Object Inside the vApp.
- B. Add an Object to a vApp.
- C. Add an Object to the Datastore the vApp is located in.
- D. Move all Objects to a new Datastore folder.

**Answer:** AB

#### NEW QUESTION 269

When modifying a vApp, which two vSphere entities can be added? (Choose two.)

- A. A resource pool
- B. A network pool
- C. A vApp
- D. A folder

**Answer:** AC

#### NEW QUESTION 274

When attempting to access a virtual machine, an administrator is unable to login using the vSphere credentials. What two options are probable causes of the authentication failure? (Choose two.)

- A. The vSphere credentials have not been granted permissions.
- B. The vSphere credentials are granted read-only permissions.
- C. The vSphere credentials are granted no-access permissions.
- D. The vSphere credentials are not a member of the local administrator group.

**Answer:** AB

#### NEW QUESTION 276

Which two options would allow a database administrator, with no access to the vSphere infrastructure, to connect to a virtual machine? (Choose two.)

- A. Use the Virtual Machine Remote Console (VMRC).
- B. Use Remote Desktop Protocol (RDP) to connect.
- C. Ask the vSphere administrator to grant permission to access the console through vCenter Server.
- D. Ask the vSphere administrator to grant permission to access with the Horizon View Direct Connect Client.

**Answer:** BC

#### NEW QUESTION 280

Which two statements are true about deploying and using vSphere Replication? (Choose two.)

- A. ESXi hosts managed by a single vCenter Server instance require a connection between the two vSphere Replication appliances.
- B. Sites managed by different vCenter Server instances require a connection between the two vSphere Replication appliances.
- C. Sites managed by different vCenter Server instances require the use of Site RecoveryManager and a connection between the two vSphere Replication appliances.
- D. ESXi hosts managed by a single vCenter Server instance require a single vSphere Replication appliance.

**Answer:** BD

#### NEW QUESTION 281

What is a benefit of using Enhanced vMotion Compatibility for an environment?

- A. EVC masks CPU features to allow compatibility between hosts that are dissimilar.
- B. EVC allows for cross platform vMotion to occur.
- C. EVC enables Long Distance vMotion.
- D. EVC enables Storage vMotion functionality.

**Answer:** A

#### NEW QUESTION 282

What is the optimal configuration when building a virtual machine for a single-threaded Windows application?

- A. Deploy single-threaded applications on uniprocessor virtual machines.
- B. Deploy single-threaded applications on symmetric multi-processor virtual machines.
- C. Tune single-threaded applications to take advantage of symmetric multi-processor resources.
- D. Tune Single-threaded applications at the hypervisor level.

**Answer:** A

#### NEW QUESTION 287

What condition would prevent an administrator from creating a new VMFS3 datastore on an ESXi 6.x host using the vSphere Web Client?

- A. A VMFS3 datastore cannot be created on an ESXi 6.x host.
- B. The VMFS3 kernel module is not loaded.
- C. A VMFS3 datastore cannot be mounted on an ESXi 6.x host.
- D. VMFS3 datastores are not compatible with virtual machines created on an ESXi 6.x host.

**Answer:** A

#### NEW QUESTION 290

Which three traffic types are available services options when configuring a vmkernel port? (Choose three.)

- A. Provisioning Traffic
- B. Virtual Volumes Traffic
- C. vSphere Replication NFC Traffic
- D. Virtual SAN Traffic
- E. FCoE Traffic

**Answer:** ACD

#### NEW QUESTION 294

An administrator has an application that requires connection directly to PCI devices through a virtual machine. What is a limitation of this configuration?

- A. Devices must be reserved for PCI passthrough on at least one host on which the virtual machine will run.
- B. Snapshots are not supported with DirectPath I/O passthrough devices.
- C. A maximum of 18 PCI vSphere DirectPath devices can be added to a virtual machine.
- D. Only one PCI controller can be presented to the virtual machine.

**Answer:** B

#### NEW QUESTION 298

Which two VMware software components can be updated by Update Manager? (Choose two.)

- A. ESX 3.5
- B. Virtual Appliances
- C. vCenter Server
- D. Guest OS

**Answer:** BD

**Explanation:** Reference: <http://www.vmware.com/support/vsphere5/doc/vsphere-update-manager-51-release-notes.html>

#### NEW QUESTION 299

What is a valid example of a vSphere Update Manager upgrade?

- A. A VMware Tools upgrade on a Fault Tolerant machine with automatic snapshots.
- B. Upgrading and patching multiple ESXi hosts simultaneously in a selected cluster.
- C. Upgrading an ESX 4.1 host to ESXi 6.x with a sufficient boot partition.
- D. An ESXi 6.x host update with automatically deleted snapshots.

**Answer:** C

**Explanation:** Reference: <http://www.vmadmin.co.uk/vmware/35-esxserver/283-vsphere4to5migrateesx4toesxi5>

#### NEW QUESTION 300

Which three actions can be taken as a result of executing the vSphere Update Manager 6.x scan and remediation wizards? (Choose three.)

- A. Install and upgrade software in virtual machines.
- B. Upgrade the firmware on ESXi host devices.
- C. Upgrade and Patch ESXi hosts.
- D. Install and update third-party software on hosts.
- E. Upgrade virtual machine hardware.

**Answer:** CDE

#### NEW QUESTION 301

An administrator has configured an alarm to be notified when a virtual machine meets two conditions:

? high virtual CPU

? high active memory consumption

The alarm is malfunctioning and triggering when either condition is met instead of both.

What can be done to correct the issue?

- A. Edit the alarm and select Trigger if ALL of the following conditions are satisfied.
- B. Edit the alarm and select Trigger if ANY of the following conditions are satisfied.

- C. Create two separate alarms, one for CPU and one for memory.
- D. Delete the existing alarm and create a new event based alarm.

**Answer:** A

#### NEW QUESTION 305

An administrator logs into the vSphere Web Client, but is unable to see any hosts and clusters. Which two options could fix the problem? (Choose two.)

- A. Verify that the client web browser and vCenter Server are in the same broadcast domain.
- B. Verify that the vCenter Server system is registered with the same Platform Services Controller as the vSphere Web Client.
- C. Log in to the vCenter Server as a user within the Active Directory domain.
- D. Log in to the vSphere Web Client as a user with permissions on the vCenter Server system.

**Answer:** BD

#### NEW QUESTION 309

An administrator is attempting to power on a virtual machine, but the task is hanging at 95%. What three scenarios best explain why this problem is happening? (Choose three.)

- A. A virtual machine question is currently being posed to the administrator.
- B. Another task for the virtual machine or other component is already in progress.
- C. The VMware High Availability cluster has insufficient resources to guarantee failover.
- D. The host has lost access to the storage device containing the virtual machine files.
- E. The host is under resource contention and unable to power on the virtual machine.

**Answer:** ABC

#### NEW QUESTION 310

Which three features are not supported when using Fault Tolerance in vSphere 6.x? (Choose three.)

- A. Virtual Volumes (VVOLS)
- B. Storage vMotion
- C. Virtual Machine Component Protection
- D. vMotion
- E. vSphere Distributed Switches

**Answer:** ABC

#### NEW QUESTION 311

An administrator is using the Host Failures to Tolerate Admission Control Policy for a vSphere High Availability (HA) cluster. When configuring this setting on the cluster, the administrator sees this error message:  
Insufficient resources to satisfy HA failover level on cluster  
What are two likely causes for the error? (Choose two.)

- A. The hosts in the cluster are disconnected.
- B. A host in the cluster is displaying an HA error.
- C. Distributed Resource Scheduler has not been configured on the cluster.
- D. Virtual Machine Component Protection has not been turned on.

**Answer:** AB

#### NEW QUESTION 313

Which vSphere 6 Standard Edition feature will allow an organization to ensure that critical multi-threaded applications have the maximum possible uptime?

- A. Fault Tolerance
- B. High Availability
- C. Distributed Resource Scheduler
- D. App HA

**Answer:** B

#### NEW QUESTION 314

An administrator is performing upgrades to ESXi 6.x from ESX 3.x and ESX 4.x hosts. What is true about this procedure?

- A. A direct, in-place upgrade can be performed only on ESX 4.1 and later hosts.
- B. ESX 3.x hosts can be upgraded, but require an upgrade to 4.x before 5.x.
- C. A direct, in-place upgrade can be performed only on ESX 4.5 and later hosts.
- D. A direct, in-place upgrade can be performed only on ESX 3.5 and later hosts.

**Answer:** B

**Explanation:** You must upgrade version 3.x ESX and ESXi hosts to ESX or ESXi version 4.x before you can upgrade them to ESXi 5.1.x. See the vSphere 4.x upgrade documentation.  
Alternatively, you might find it simpler and more cost effective to do a fresh installation of ESXi 5.1.x.

#### NEW QUESTION 317

Refer to the Exhibit.

Adapter Details			
Properties Devices Paths			
<div> <div>Enable</div> <div>Disable</div> </div>			
Runtime Name	Target	LUN	Status
vmhba2:C0:T3:L0	50:06:01:60:c7:20:6a:a4 50:06:0...	0	Active (I/O)
vmhba2:C0:T2:L0	50:06:01:60:c7:20:6a:a4 50:06:0...	0	Active (I/O)
vmhba2:C0:T1:L0	50:06:01:60:c7:20:6a:a4 50:06:0...	0	Dead (I/O)
vmhba2:C0:T0:L0	50:06:01:60:c7:20:6a:a4 50:06:0...	0	Active (I/O)

A storage administrator is not seeing full utilization of all bandwidth from an ESXi host. The vSphere administrator observes the adapter details, as shown in the Exhibit.

What is the probable cause of this issue?

- A. Another path needs to be used to allow full utilization of the bandwidth.
- B. The array is not setup to use the correct multipathing policy.
- C. There are no virtual machines on the host.
- D. No traffic is being sent across it because a path failed.

**Answer:** D

#### NEW QUESTION 321

An administrator is deploying multiple Windows 2003 Virtual Machines from the same template.

What two steps should be taken to avoid network conflicts? (Choose two.)

- A. Customize the guest operating system.
- B. Install VMware Tools into the new virtual machines.
- C. Copy the Microsoft Sysprep tools onto the vCenter Server system.
- D. Ensure the e1000 vmnic is selected for each new virtual machine.

**Answer:** AC

#### NEW QUESTION 324

An administrator is upgrading an ESXi 3.5 host to ESXi 6.x with an intermediate upgrade to

4.0 using Update Manager. The host has a single Intel Xeon processor, 4GB of RAM, and a VMFS datastore on a private, SAN-attached LUN. What might cause the upgrade to be unsuccessful?

- A. The ESXi host has 4GB RAM.
- B. The ESXi host has one processor.
- C. ESXi 3.5 is not supported for upgrade.
- D. Update Manager cannot upgrade a previously upgraded host.

**Answer:** C

**Explanation:** Reference:

[http://pubs.vmware.com/vsphere-50/index.jsp?topic=%2Fcom.vmware.vsphere.upgrade.doc\\_50%2FGUID-AA106086-E10D-456E-B0B9-340D3D1462C3.html](http://pubs.vmware.com/vsphere-50/index.jsp?topic=%2Fcom.vmware.vsphere.upgrade.doc_50%2FGUID-AA106086-E10D-456E-B0B9-340D3D1462C3.html)

#### NEW QUESTION 328

An administrator deploys vCenter Server using the embedded Platform Services Controller. After testing the deployment for a couple of months, it is determined that the environment would be better served with an external Platform Services Controller.

What should the administrator do to meet this new requirement?

- A. Deploy a fresh instance of vCenter Server with an external Platform Services Controller.
- B. Perform a fresh install of an external Platform Services Controller.
- C. Migrate the embedded Platform Services Controller to an external Platform Services Controller.
- D. Upgrade the embedded Platform Services Controller to an external Platform Services Controller.

**Answer:** D

#### NEW QUESTION 331

What is a benefit of using VMware Data Protection (VDP)?



- A. Provides support for guest-level backups and restores of Microsoft SQL Servers, Exchange Servers, and Share Point Servers.
- B. Provides support for advanced storage services including replication, encryption, deduplication, and compression.
- C. Provides direct access to VDP configuration integrated into the vSphere Client.
- D. Reduces disk space consumed by virtual machine data using deduplication.

**Answer:** D

#### NEW QUESTION 335

An administrator creates a DRS cluster of eight ESXi 6.x hosts. There are 10 virtual machines balanced across the hosts. An attempt to place the first host into maintenance mode fails.

What are two reasons that the host failed to enter maintenance mode? (Choose two.)

- A. The DRS cluster Automation Level is set to Partially Automated mode.
- B. One of the virtual machines on the ESXi Host entering maintenance mode is configured with a DRS Host affinity rule Should run on hosts in group.
- C. One of the virtual machines on the ESXi Host entering maintenance mode is configured with a DRS Host affinity rule Must run on hosts in group.
- D. One of the virtual machines on the ESXi Host entering maintenance mode is configured with an individual Automation Level set to Partially Automated.

**Answer:** AD

#### NEW QUESTION 339

vSphere Update Manager allows which two virtual machine attributes to be upgraded? (Choose two.)

- A. Virtual machine firewall policies for NSX.
- B. Software Packages in the virtual machine.
- C. Virtual machine Hardware Version.
- D. VMware Tools Upgrade.

**Answer:** CD

#### NEW QUESTION 344

A user wants to monitor a business-critical virtual machine to ensure that it doesn't run out of resources.

What metric could be monitored in vRealize Operations to address this concern?

- A. Time Remaining badge
- B. Compliance badge
- C. Reclaimable Waste badge
- D. Density badge

**Answer:** A

#### NEW QUESTION 349

An administrator has purchased a new 10GB Converged Network Adapter (CNA) for installation in a system that is running ESXi 6.x. The administrator has downloaded the latest driver from the hardware vendor and wants to include the driver in an image. The image profile acceptance level is set to VMwareSupported. The acceptance level of the driver is VMwareSupported.

Which two statements are true about the inclusion of this driver in the image? (Choose two.)

- A. Support calls for the driver will be directed to the partner.
- B. The image can be built, but the driver will not be included in the image.
- C. The image can be built and the driver will be included.
- D. Support calls for the driver will be handled by VMware.

**Answer:** AC

**Explanation:** The acceptance level of all VIBs on a host must be at least as high as the host acceptance level. For example, if the host acceptance level is VMware Accepted, you can install VIBs with acceptance levels of VMware Certified and VMware Accepted, but you cannot install VIBs with acceptance levels of Partner Supported or Community Supported. To install a VIB with a less restrictive acceptance level than that of the host, you can change the acceptance level of the host by using the vSphere Client or by running esxcli software acceptance commands.

Setting host acceptance levels is a best practice that allows you to specify which VIBs can be installed on a host and used with an image profile, and the level of support you can expect for a VIB. For example, a Community Supported VIB might not be recommended for an ESXi server in a production environment.

[http://pubs.vmware.com/vsphere-50/index.jsp?topic=%2Fcom.vmware.vsphere.upgrade.doc\\_50%2FGUID-27BBBAB8-01EA-4238-8140-1C3C3EFC0AA6.html](http://pubs.vmware.com/vsphere-50/index.jsp?topic=%2Fcom.vmware.vsphere.upgrade.doc_50%2FGUID-27BBBAB8-01EA-4238-8140-1C3C3EFC0AA6.html)

#### NEW QUESTION 351

An administrator is virtualizing a physical application server and adding it to an existing multi-tiered vApp. The application license is currently tied to the physical NIC's MAC address, so the administrator needs to ensure the license will function properly in the virtual machine.

Which two actions can the administrator take to satisfy this task? (Choose two.)

- A. Set the MAC address for the vNIC in the guest operating system.
- B. Install the physical server's NIC into the ESXi host.
- C. Configure the MAC address for the vNIC using the vSphere Web Client.
- D. Assign the physical server NIC's MAC address in the vSphere Distributed Switch.

**Answer:** AC

#### NEW QUESTION 353

An administrator is attempting to enable Storage I/O Control on a datastore, but it is failing.

What is the likely reason for this failure?

- A. The host is connected to a datastore is running on ESX 4.0.
- B. The host is connected to a Fibre Channel storage array.
- C. The datastore has multiple extents.
- D. The datastore is managed by a single vCenter Server.

**Answer:** A

#### NEW QUESTION 356

Which two NFS Protocol versions does vSphere 6 support? (Choose two.)

- A. Version 3
- B. Version 3.1
- C. Version 4
- D. Version 4.1

**Answer:** AD

#### NEW QUESTION 361

What is a requirement when enabling a Virtual SAN cluster in an existing High Availability (HA) and Distributed Resource Scheduler (DRS) Cluster?

- A. Disable DRS and HA before enabling Virtual SAN
- B. Enable DRS before enabling Virtual SAN
- C. Disable HA before enabling Virtual SAN
- D. Enable Storage DRS before enabling Virtual SAN

**Answer:** C

#### NEW QUESTION 363

An administrator has a virtual machine that requires four times the compute resources than other virtual machines on the same ESXi 6.x host. How should the administrator configure the virtual machine settings, in order to be prepared for any resource contention?

- A. Set the shares of the priority virtual machine to High and the rest to Low.
- B. Set the shares of the priority virtual machine to High.
- C. Set the shares of the priority virtual machine to High and the rest to Normal.
- D. Set the shares of the priority virtual machine to Normal and the rest to Low.

**Answer:** A

#### NEW QUESTION 364

Which two components can be used when configuring Enhanced Linked Mode? (Choose two.)

- A. vCenter Server Appliance
- B. vRealize Operations Manager
- C. vSphere Management Appliance
- D. vCenter Server for Windows

**Answer:** AD

#### NEW QUESTION 369

.....

## THANKS FOR TRYING THE DEMO OF OUR PRODUCT

Visit Our Site to Purchase the Full Set of Actual 2V0-620 Exam Questions With Answers.

We Also Provide Practice Exam Software That Simulates Real Exam Environment And Has Many Self-Assessment Features. Order the 2V0-620 Product From:

<https://www.2passeasy.com/dumps/2V0-620/>

## Money Back Guarantee

### 2V0-620 Practice Exam Features:

- \* 2V0-620 Questions and Answers Updated Frequently
- \* 2V0-620 Practice Questions Verified by Expert Senior Certified Staff
- \* 2V0-620 Most Realistic Questions that Guarantee you a Pass on Your FirstTry
- \* 2V0-620 Practice Test Questions in Multiple Choice Formats and Updatesfor 1 Year