

Microsoft

Exam Questions 98-367

MTA Security Fundamentals Practice Test



NEW QUESTION 1

To implement WPA2 Enterprise, you would need a/an:

- A. RADIUS server
- B. SSL server
- C. WEP server
- D. VPN server

Answer: A

NEW QUESTION 2

Passwords that contain recognizable words are vulnerable to a:

- A. Denial of Service attack
- B. Hashing attack
- C. Dictionary attack
- D. Replay attack

Answer: C

Explanation: A dictionary attack is a method of breaking into a password-protected computer or server by systematically entering every word in a dictionary as a password. A dictionary attack can also be used in an attempt to find the key necessary to decrypt an encrypted message or document.

Dictionary attacks work because many computer users and businesses insist on using ordinary words as passwords. Dictionary attacks are rarely successful against systems that employ multiple-word phrases, and unsuccessful against systems that employ random combinations of uppercase and lowercase letters mixed up with numerals.

Reference: <http://searchsecurity.techtarget.com/definition/dictionary-attack>

NEW QUESTION 3

Your company requires that users type a series of characters to access the wireless network.

The series of characters must meet the following requirements:

- ? Contains more than 15 characters
- ? Contains at least one letter
- ? Contains at least one number
- ? Contains at least one symbol

Which security technology meets these requirements?

- A. WEP
- B. WPA2 PSK
- C. WPA2 Enterprise
- D. MAC filtering

Answer: B

Explanation: Pre-shared key mode (PSK, also known as Personal mode) is designed for home and small office networks that don't require the complexity of an 802.1X authentication server.[9] Each wireless network device encrypts the network traffic using a 256 bit key. This key may be entered either as a string of 64 hexadecimal digits, or as a passphrase of 8 to 63 printable ASCII characters

NEW QUESTION 4

You are an intern at Wide World Importers and help manage 1000 workstations. All the workstations are members of an Active Domain.

You need to push out an internal certificate to Internet Explorer on all workstations. What is the quickest method to do this?

- A. Local policy
- B. Logon script
- C. Windows Update
- D. Group policy

Answer: A

NEW QUESTION 5

The Active Directory controls, enforces, and assigns security policies and access rights for all users.

Select the correct answer if the underlined text does not make the statement correct. Select "No change is needed" if the underlined text makes the statement correct.

- A. NTFS permissions
- B. User Account Control
- C. Registry
- D. No change is needed

Answer: D

NEW QUESTION 6

Role separation improves server security by:

- A. Enforcing principle of least privilege.

- B. Installing applications on separate hard disks.
- C. Physically separating high security servers from other servers.
- D. Placing servers on separate VLANs.

Answer: A

NEW QUESTION 7

HOTSPOT

For each of the following statements, select Yes if the statement is true. Otherwise, select No. Each correct selection is worth one point.

Answer Area

	Yes	No
Honey pots are primarily used to attract potential attackers or hackers.	<input type="radio"/>	<input type="radio"/>
By setting up a honey pot, an administrator can get insightful information about the attacker, such as the IP address.	<input type="radio"/>	<input type="radio"/>
A honey pot is an appliance or piece of software that allows or denies network access based on a preconfigured set of rules.	<input type="radio"/>	<input type="radio"/>

Answer:

Explanation: Answer Area

	Yes	No
Honey pots are primarily used to attract potential attackers or hackers.	<input checked="" type="radio"/>	<input type="radio"/>
By setting up a honey pot, an administrator can get insightful information about the attacker, such as the IP address.	<input checked="" type="radio"/>	<input type="radio"/>
A honey pot is an appliance or piece of software that allows or denies network access based on a preconfigured set of rules.	<input type="radio"/>	<input checked="" type="radio"/>

NEW QUESTION 8

Dumpster diving refers to a physical threat that a hacker might use to look for information about a computer network. Select the correct answer if the underlined text does not make the statement correct. Select "No change is needed" if the underlined text makes the statement correct.

- A. Phishing
- B. Malware
- C. Reverse Social engineering
- D. No change is needed

Answer: D

NEW QUESTION 9

HOTSPOT

For each of the following statements, select Yes if the statement is true. Otherwise, select No. Each correct selection is worth one point.

Answer Area

	Yes	No
BitLocker to Go Reader allows you to encrypt drives.	<input type="radio"/>	<input type="radio"/>
BitLocker to Go Reader requires drives that are encrypted using a password.	<input type="radio"/>	<input type="radio"/>
BitLocker to Go works on Windows Vista and Windows XP.	<input type="radio"/>	<input type="radio"/>

Answer:

Explanation: Answer Area

	Yes	No
BitLocker to Go Reader allows you to encrypt drives.	<input type="radio"/>	<input checked="" type="radio"/>
BitLocker to Go Reader requires drives that are encrypted using a password.	<input checked="" type="radio"/>	<input type="radio"/>
BitLocker to Go works on Windows Vista and Windows XP.	<input checked="" type="radio"/>	<input type="radio"/>

NEW QUESTION 10

You want to make your computer resistant to online hackers and malicious software. What should you do?

- A. Configure a forward proxy.
- B. Install anti-virus software.
- C. Enable spam filtering.
- D. Turn on Windows Firewall.

Answer: B

NEW QUESTION 10

What is the standard or basic collection of NTFS permissions?

- A. Read and execute, read, write, full control, modify, list folder contents
- B. Change permissions, read permissions, write permissions
- C. Read attributes, list folder/read data, traverse folder/execute file
- D. Create files/write data, create folders/append data, take ownership

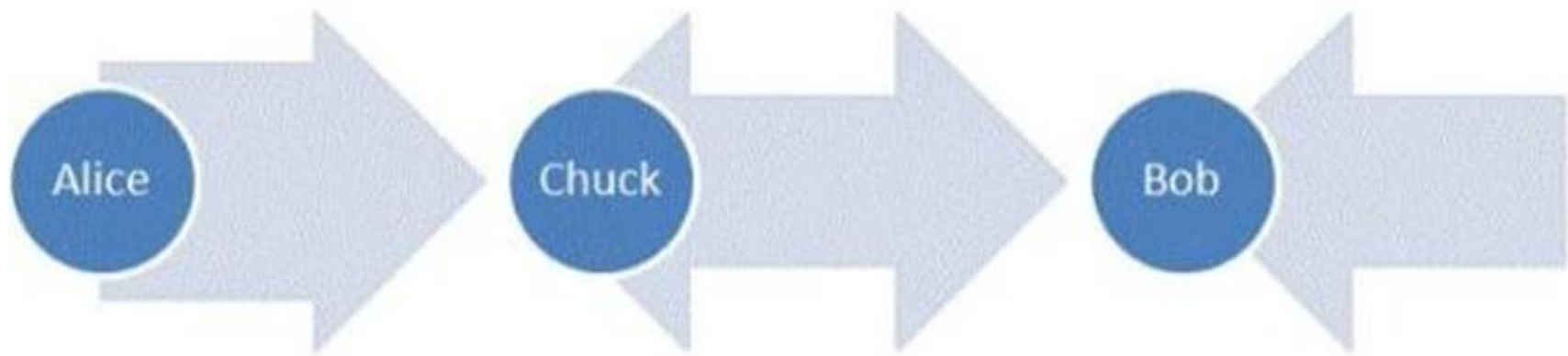
Answer: A

Explanation: Reference: <http://technet.microsoft.com/en-us/library/bb727008.aspx>

NEW QUESTION 11

HOTSPOT

Alice and Bob are exchanging messages with each other. Chuck modifies the messages sent between Alice and Bob as shown in the following image:



Use the drop-down menus to select the answer choice that completes each statement. Each correct selection is worth one point.

Answer Area

The scenario demonstrated is a [answer choice] attack.

Alice and Bob could add a [answer choice] to avoid this type of attack.

Answer Area

The scenario demonstrated is a [answer choice] attack.

Alice and Bob could add a [answer choice] to avoid this type of attack.

Answer:

Explanation: **Answer Area**

The scenario demonstrated is a [answer choice] attack.

Alice and Bob could add a [answer choice] to avoid this type of attack.

NEW QUESTION 12

You have a Windows 7 desktop computer, and you create a Standard User account for your roommate so that he can use the desktop from time to time. Your roommate has forgotten his password. Which two actions can you take to reset the password? (Choose two.)

- A. Use your password reset disk.
- B. Use your administrator account.
- C. Boot into Safe Mode with your roommate's account.
- D. From your roommate's account press CTRL+ALT+DELETE, and then click Change a password.

Answer: AB

NEW QUESTION 15

The company that you work for wants to set up a secure network, but they do not have any servers. Which three security methods require the use of a server? (Choose three.)

- A. 802.1x
- B. WPA2 Personal
- C. WPA2 Enterprise

- D. RADIUS
- E. 802.11ac

Answer: ACD

NEW QUESTION 16

E-mail spoofing:

- A. Forwards e-mail messages to all contacts
- B. Copies e-mail messages sent from a specific user
- C. Obscures the true e-mail sender
- D. Modifies e-mail routing logs

Answer: C

Explanation: Reference: <http://www.microsoft.com/mscorp/safety/technologies/senderid/technology.mspx>

NEW QUESTION 17

You are an intern at Litware, Inc. Your manager asks you to make password guess attempts harder by limiting login attempts on company computers. What should you do?

- A. Enforce password sniffing.
- B. Enforce password history.
- C. Make password complexity requirements higher.
- D. Implement account lockout policy.

Answer: D

Explanation: Reference: <http://technet.microsoft.com/en-us/library/dd277400.aspx>

NEW QUESTION 22

You need to prevent unauthorized users from reading a specific file on a portable computer if the portable computer is stolen. What should you implement?

- A. File-level permissions
- B. Advanced Encryption Standard (AES)
- C. Folder-level permissions
- D. Distributed File System (DFS)
- E. BitLocker

Answer: E

Explanation: Reference: <http://4sysops.com/archives/seven-reasons-why-you-need-bitlocker-hard-drive-encryption-for-your-whole-organization/>

NEW QUESTION 27

Your password is 1Vu*c!l8sT.

Which attack method is your password vulnerable to?

- A. Rainbow table
- B. Brute force
- C. Spidering
- D. Dictionary

Answer: A

NEW QUESTION 29

You are an intern and are working remotely.

You need a solution that meets the following requirements:

? Allows you to access data on the company network securely

? Gives you the same privileges and access as if you were in the office

What are two connection methods you could use? (Choose two.)

- A. Forward Proxy
- B. Virtual Private Network (VPN)
- C. Remote Access Service (RAS)
- D. Roaming Profiles

Answer: BD

NEW QUESTION 34

Which enables you to change the permissions on a folder?

- A. Take ownership

- B. Extended attributes
- C. Auditing
- D. Modify

Answer: D

NEW QUESTION 36

Which password attack uses all possible alpha numeric combinations?

- A. Social engineering
- B. Brute force attack
- C. Dictionary attack
- D. Rainbow table attack

Answer: C

NEW QUESTION 37

The Windows Firewall protects computers from unauthorized network connections.

Select the correct answer if the underlined text does not make the statement correct. Select "No change is needed" if the underlined text makes the statement correct.

- A. Email viruses
- B. Phishing scams
- C. Unencrypted network access
- D. No change is needed

Answer: D

NEW QUESTION 41

E-mail bombing attacks a specific entity by:

- A. Redirecting all e-mail to another entity
- B. Sending high volumes of e-mail
- C. Tracing e-mail to the destination address
- D. Triggering high levels of security alerts

Answer: B

Explanation: In Internet usage, an email bomb is a form of net abuse consisting of sending huge volumes of email to an address in an attempt to overflow the mailbox or overwhelm the server where the email address is hosted in a denial-of-service attack.

NEW QUESTION 44

You suspect a user's computer is infected by a virus. What should you do first?

- A. Restart the computer in safe mode
- B. Replace the computer's hard disk drive
- C. Disconnect the computer from the network
- D. Install antivirus software on the computer

Answer: D

NEW QUESTION 49

Which technology enables you to filter communications between a program and the Internet?

- A. RADIUS server
- B. Antivirus software
- C. Software firewall
- D. BitLocker To Go

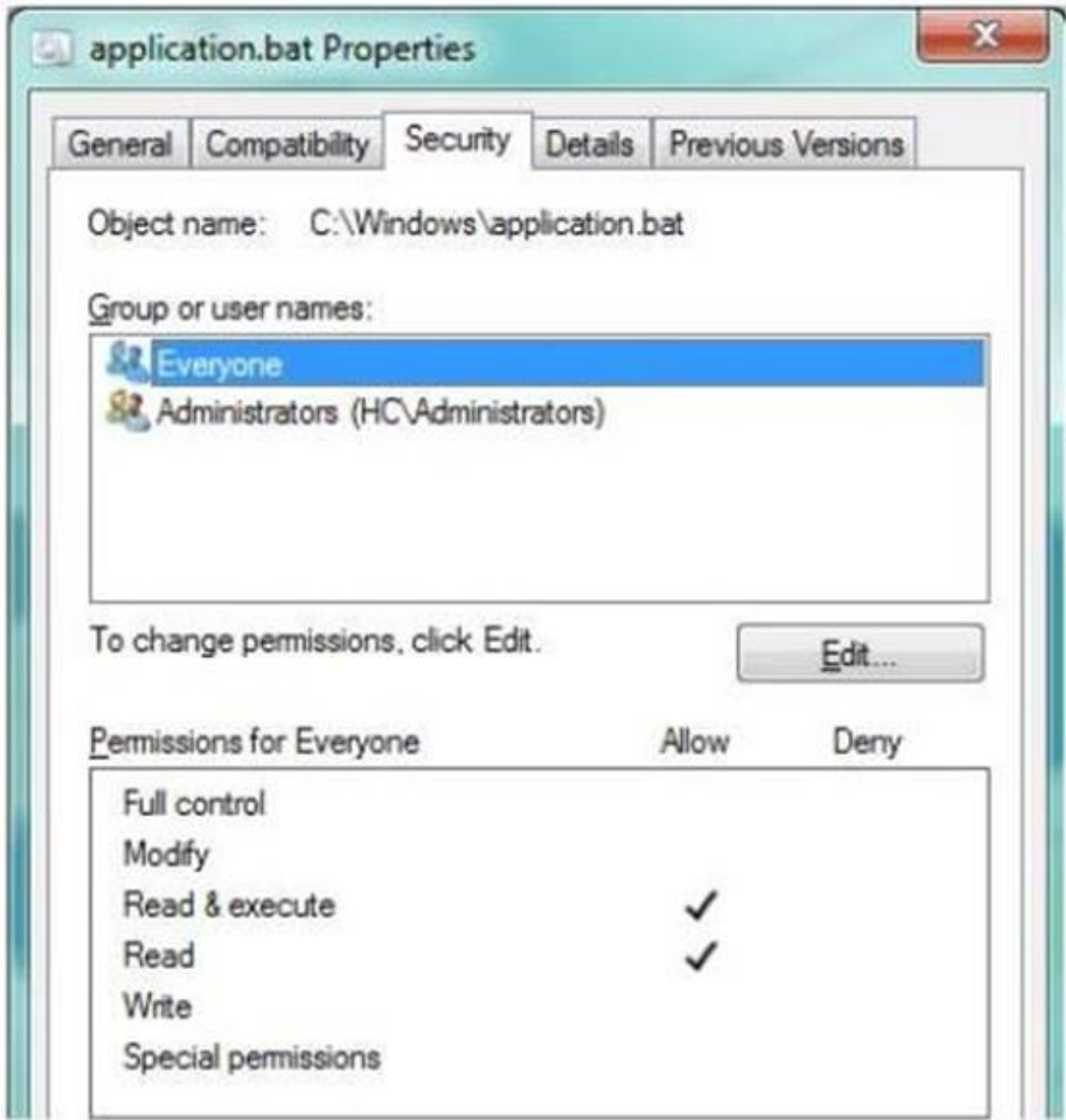
Answer: C

Explanation: There are two types of firewalls the Hardware Firewall and the Software Firewall. A Software Firewall is a software program and a Hardware Firewall is a piece of hardware. Both have the same objective of filtering communications over a system.

NEW QUESTION 52

HOTSPOT

Your supervisor asks you to review file permission settings on the application.bat file. You need to report which file system the file is on and the type of permission the file has. You review the application Properties dialog box shown in the following image:



Use the drop-down menus to select the answer choice that completes each statement. Each correct selection is worth one point.

Answer Area

The "cygwin.bat" file in the image is currently on the [answer choice] file system.

[answer choice] permissions are currently being displayed for the "cygwin.bat" file.

Answer Area

The "cygwin.bat" file in the image is currently on the [answer choice] file system.

[answer choice] permissions are currently being displayed for the "cygwin.bat" file.

Answer:

Explanation:

Answer Area

The "cygwin.bat" file in the image is currently on the [answer choice] file system.

[answer choice] permissions are currently being displayed for the "cygwin.bat" file.

FAT16
FAT32
NTFS

Basic
Advanced
Full Control

NEW QUESTION 55

Many Internet sites that you visit require a user name and password. How should you secure these passwords?

- A. Save them to a text file
- B. Enable session caching
- C. Configure the browser to save passwords
- D. Save them to an encrypted file
- E. Reuse the same password

Answer: D

NEW QUESTION 59

What is a common method for password collection?

- A. Email attachments
- B. Back door intrusions
- C. SQL Injection
- D. Network sniffers

Answer: D

NEW QUESTION 64

HOTSPOT

For each of the following statements, select Yes if the statement is true. Otherwise, select No. Each correct selection is worth one point.

Answer Area

	Yes	No
Tools like Microsoft Security Compliance Manager and Microsoft Baseline Security Analyzer can assist with server hardening.	<input type="radio"/>	<input type="radio"/>
Administrator passwords may contain ASCII characters generated by a combination of the ALT key and three digits on the numeric keypad.	<input type="radio"/>	<input type="radio"/>
The removal of unused registry entries and executables increases the surface vulnerability of the server.	<input type="radio"/>	<input type="radio"/>

Answer:

Explanation:

Answer Area

	Yes	No
Tools like Microsoft Security Compliance Manager and Microsoft Baseline Security Analyzer can assist with server hardening.	<input checked="" type="radio"/>	<input type="radio"/>
Administrator passwords may contain ASCII characters generated by a combination of the ALT key and three digits on the numeric keypad.	<input checked="" type="radio"/>	<input type="radio"/>
The removal of unused registry entries and executables increases the surface vulnerability of the server.	<input type="radio"/>	<input checked="" type="radio"/>

NEW QUESTION 69

The primary method of authentication in an SSL connection is passwords.

To answer, choose the option "No change is needed" if the underlined text is correct. If the underlined text is not correct, choose the correct answer.

- A. No change is needed
- B. Certificates
- C. IPsec
- D. Biometrics

Answer: B

Explanation: Reference: https://www.geocerts.com/ssl/understanding_authentication

NEW QUESTION 72

The purpose of a digital certificate is to verify that a:

- A. Public key belongs to a sender.
- B. Computer is virus-free.
- C. Private key belongs to a sender.
- D. Digital document is complete.

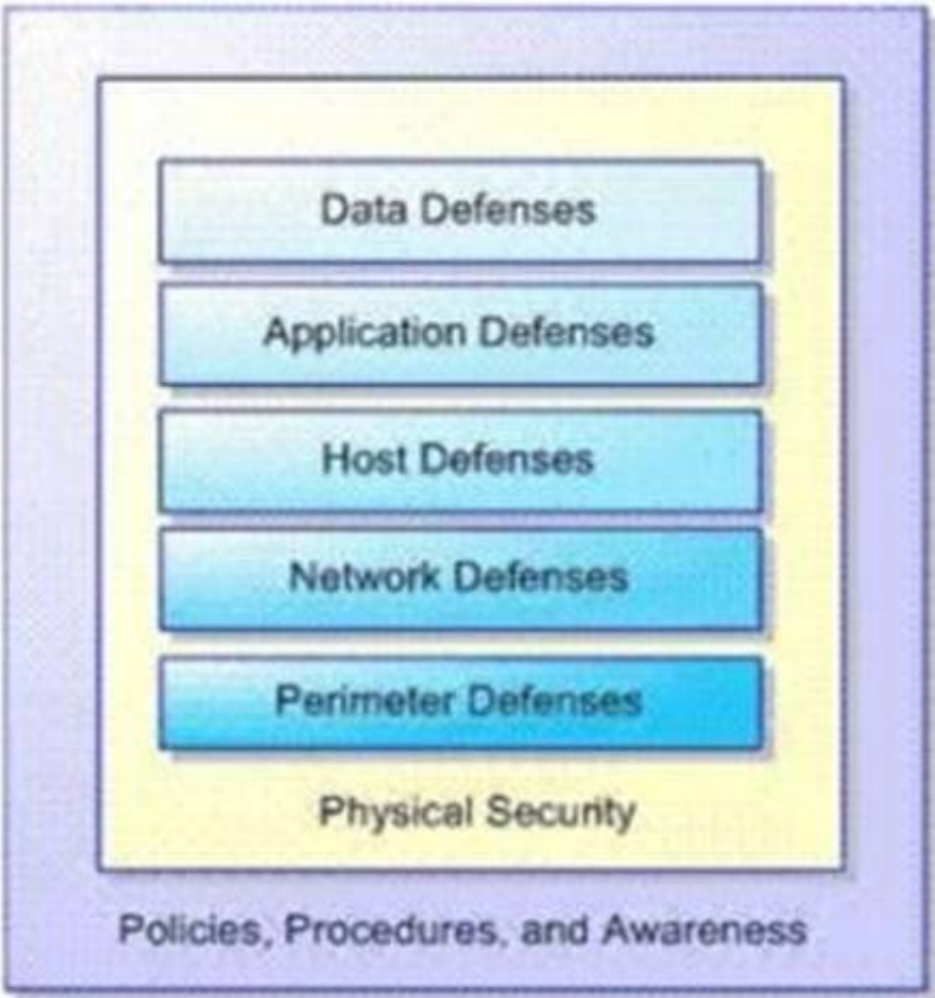
Answer: A

Explanation: In cryptography, a public key certificate (also known as a digital certificate or identity certificate) is an electronic document that uses a digital signature to bind a public key with an identity.

NEW QUESTION 77

HOTSPOT

You are an intern for a company where your manager wants to be sure you understand the social engineering threats that may occur. Your manager emphasizes the principles of the Microsoft Defense-in-Depth Security Model shown in the following image:



Use the drop-down menus to select the answer choice that completes each statement. Each correct selection is worth one point.

Answer Area

The [answer choice] defense targets staff within an organization, explaining what to do, when, why, and by whom.

▼

The overarching defense of the Microsoft Defense-in-Depth Security Model is [answer choice]

▼

Answer Area

The [answer choice] defense targets staff within an organization, explaining what to do, when, why, and by whom.

▼

Policies, Procedures, and Awareness

Data Defenses

Physical Security

The overarching defense of the Microsoft Defense-in-Depth Security Model is [answer choice]

▼

Policies, Procedures, and Awareness.

Network Defenses.

Data Defenses.

Answer:

Explanation:

Answer Area

The **[answer choice]** defense targets staff within an organization, explaining what to do, when, why, and by whom.

Policies, Procedures, and Awareness
Data Defenses
Physical Security

The overarching defense of the Microsoft Defense-in-Depth Security Model is **[answer choice]**

Policies, Procedures, and Awareness.
Network Defenses.
Data Defenses.

NEW QUESTION 80

Phishing is an attempt to:

- A. Obtain information by posing as a trustworthy entity.
- B. Limit access to e-mail systems by authorized users.
- C. Steal data through the use of network intrusion.
- D. Corrupt e-mail databases through the use of viruses.

Answer: A

Explanation: Phishing is the act of attempting to acquire sensitive information such as usernames, passwords, and credit card details (and sometimes, indirectly, money) by masquerading as a trustworthy entity in an electronic communication.

NEW QUESTION 81

Shredding documents helps prevent:

- A. Man-in-the-middle attacks
- B. Social engineering
- C. File corruption
- D. Remote code execution
- E. Social networking

Answer: B

Explanation: Reference: <http://technet.microsoft.com/en-us/library/cc875841.aspx>

NEW QUESTION 85

Basic security questions used to reset a password are susceptible to:

- A. Hashing
- B. Social engineering
- C. Network sniffing
- D. Trojan horses

Answer: B

Explanation: Reference: http://en.wikipedia.org/wiki/Self-service_password_reset

NEW QUESTION 87

A user who receives a large number of emails selling prescription medicine is probably receiving pharming mail.

Select the correct answer if the underlined text does not make the statement correct. Select "No change is needed" if the underlined text makes the statement correct.

- A. Malware
- B. Spoofed mail
- C. Spam
- D. No change is needed.

Answer: C

NEW QUESTION 90

You have two servers that run Windows Server. All drives on both servers are formatted by using NTFS.

You move a file from one server to the other server. The file's permissions in the new location will:

- A. Enable full access to the everyone group
- B. Restrict access to the Administrators group
- C. Inherit the destination folder's permissions
- D. Retain the original folder's permissions

Answer: C

Explanation: You can modify how Windows Explorer handles permissions when objects are copied or moved to another NTFS volume. When you copy or move an object to another volume, the object inherits the permissions of its new folder.

NEW QUESTION 91

What is a service set identifier (SSID)?

- A. A wireless encryption standard
- B. The wireless LAN transmission type
- C. The broadcast name of an access point
- D. A wireless security protocol

Answer: C

Explanation: SSID (service set identifier) is a function performed by an Access Point that transmits its name so that wireless stations searching for a network connection can 'discover' it. It's what allows your wireless adapter's client manager program or Windows built-in wireless software to give you a list of the Access Points in range.

NEW QUESTION 96

An attorney hires you to increase the wireless network security for the law firm's office. The office has a very basic network, with just a modem and a router. Which of these security modes offers the highest security?

- A. WPA-Personal
- B. WEP
- C. WPA2-Personal
- D. WPA-Enterprise

Answer: C

NEW QUESTION 101

You create a new file in a folder that has inheritance enabled. By default, the new file:

- A. Takes the permissions of the parent folder
- B. Does not take any permissions
- C. Takes the permissions of other folders in the same directory
- D. Takes the permissions of other files in the same directory

Answer: A

Explanation: Reference:

https://www.microsoft.com/resources/documentation/windows/xp/all/proddocs/en-us/acl_inherit_permissions.mspx?mfr=true

NEW QUESTION 104

The default password length for a Windows Server domain controller is:

- A. 5
- B. 7
- C. 14

Answer: C

NEW QUESTION 108

Which provides the highest level of security in a firewall?

- A. Stateful inspection
- B. Outbound packet filters
- C. Stateless inspection
- D. Inbound packet filters

Answer: A

NEW QUESTION 112

Physically securing servers prevents:

- A. Theft
- B. Compromise of the certificate chain
- C. Man-in-the middle attacks

D. Denial of Service attacks

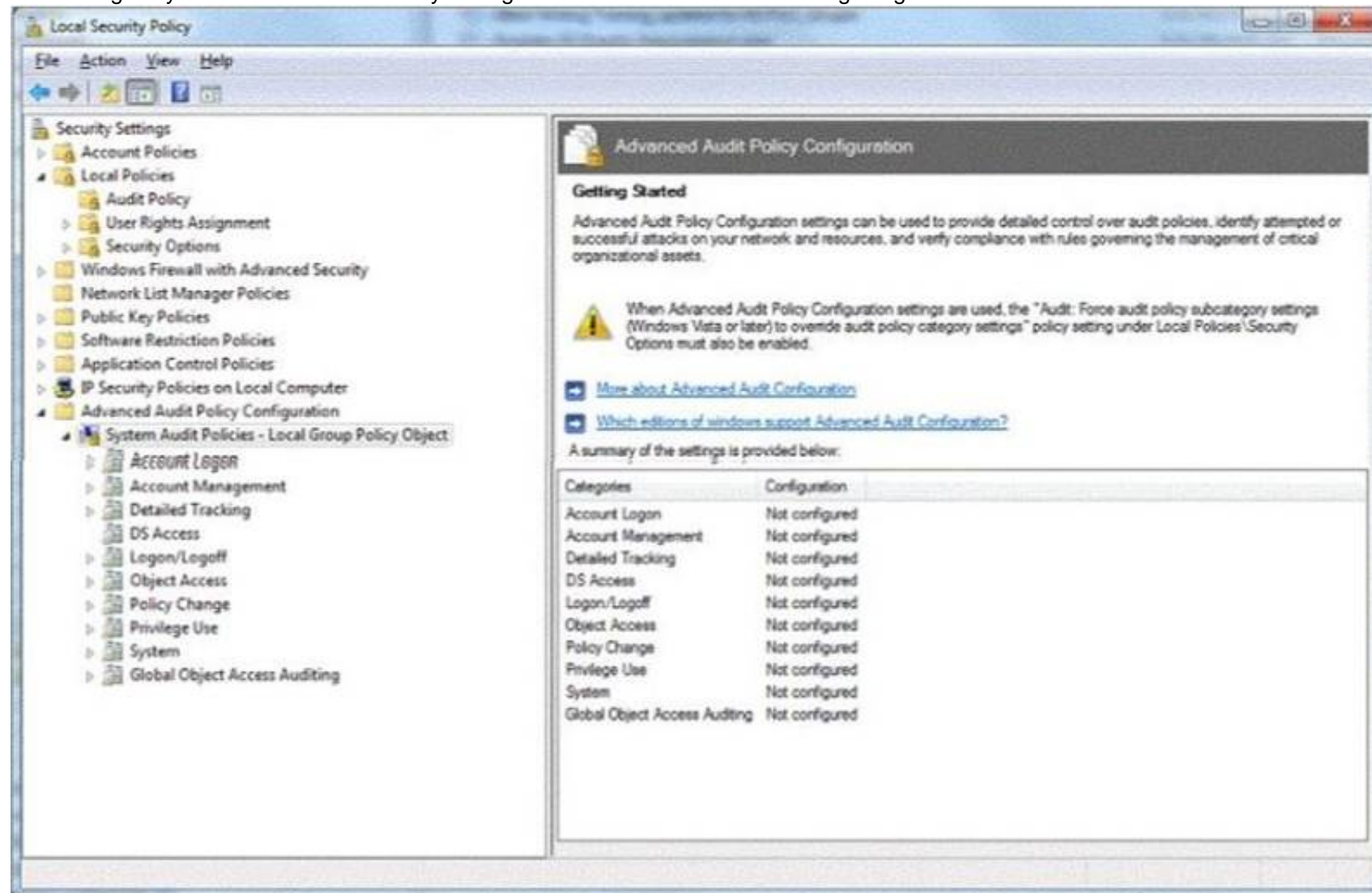
Answer: A

NEW QUESTION 115

HOTSPOT

You are preparing an audit policy for the workstations at Contoso, Ltd. Currently, no advanced auditing is enabled. The workstations are not members of the domain.

The settings of your Advanced Audit Policy Configuration are shown in the following image:



Use the drop-down menus to select the answer choice that completes each statement. Each correct selection is worth one point.

Answer Area

To enable auditing of all local login events, you need to turn on the **[answer choice]** Advanced Audit Policy.

You need to know when someone accesses files in the c:\temp directory. Auditing is turned on for this directory. You need to enable the **[answer choice]** Advanced Audit Policy to log these events.

Answer Area

To enable auditing of all local login events, you need to turn on the **[answer choice]** Advanced Audit Policy.

Logon/Logoff
Account Logon
System

You need to know when someone accesses files in the c:\temp directory. Auditing is turned on for this directory. You need to enable the **[answer choice]** Advanced Audit Policy to log these events.

Object Access
Privilege Use
System

Answer:

Explanation:

Answer Area

To enable auditing of all local login events, you need to turn on the [answer choice] Advanced Audit Policy.

Logon/Logoff
Account Logon
System

You need to know when someone accesses files in the c:\temp directory. Auditing is turned on for this directory. You need to enable the [answer choice] Advanced Audit Policy to log these events.

Object Access
Privilege Use
System

NEW QUESTION 117

To prevent users from copying data to removable media, you should:

- A. Lock the computer cases
- B. Apply a group policy
- C. Disable copy and paste
- D. Store media in a locked room

Answer: B

Explanation: Reference: <http://blogs.technet.com/b/askds/archive/2008/08/25/removable-storage-group-policy-and-windows-server-2008-and-windows-vista.aspx>

NEW QUESTION 122

You need to limit the programs that can run on client computers to a specific list. Which technology should you implement?

- A. Windows Security Center
- B. Security Accounts Manager
- C. System Configuration Utility
- D. AppLocker group policies

Answer: A

NEW QUESTION 127

The manager of a coffee shop hires you to securely set up WiFi in the shop.
To keep computer users from seeing each other, what should you use with an access point?

- A. Client bridge mode
- B. Client isolation mode
- C. MAC address filtering
- D. Client mode

Answer: B

Explanation: Wireless Client Isolation is a unique security feature for wireless networks. When Client Isolation is enabled any and all devices connected to the wireless LAN will be unable to talk to each other.

NEW QUESTION 131

HOTSPOT

For each of the following statements, select Yes if the statement is true. Otherwise, select No. Each correct selection is worth one point.

Answer Area

	Yes	No
Smart cards can be used in biometrics-based systems.	<input type="radio"/>	<input type="radio"/>
Smart cards can be read from distances of several inches to many yards.	<input type="radio"/>	<input type="radio"/>
Smart cards provide a means of securely storing data on the card.	<input type="radio"/>	<input type="radio"/>

Answer:

Explanation: **Answer Area**

	Yes	No
Smart cards can be used in biometrics-based systems.	<input checked="" type="radio"/>	<input type="radio"/>
Smart cards can be read from distances of several inches to many yards.	<input type="radio"/>	<input checked="" type="radio"/>
Smart cards provide a means of securely storing data on the card.	<input checked="" type="radio"/>	<input type="radio"/>

NEW QUESTION 135

Network Access Protection (NAP) enables administrators to control access to network resources based on a computer's:

- A. Encryption level
- B. Warranty
- C. Physical location
- D. Configuration

Answer: D

Explanation: Network Access Protection (NAP) is a new set of operating system components included with the Windows Server® 2008 and Windows Vista® operating systems that provides a platform to help ensure that client computers on a private network meet administrator-defined requirements for system health. NAP policies define the required configuration and update status for a client computer's operating system and critical software. For example, computers might be required to have antivirus software with the latest signatures installed, current operating system updates installed, and a host-based firewall enabled. By enforcing compliance with health requirements, NAP can help network administrators mitigate some of the risk caused by improperly configured client computers that might be exposed to viruses and other malicious software.

NEW QUESTION 140

Humongous Insurance is an online healthcare insurance company. During an annual security audit a security firm tests the strength of the company's password policy and suggests that Humongous Insurance implement password history policy. What is the likely reason that the security firm suggests this?

- A. Past passwords were easily cracked by the brute force method.
- B. Past passwords of users contained dictionary words.
- C. Previous password breaches involved use of past passwords.
- D. Past passwords lacked complexity and special characters.

Answer: B

NEW QUESTION 145

HOTSPOT

For each of the following statements, select Yes if the statement is true. Otherwise, select No. Each correct selection is worth one point.

Answer Area

	Yes	No
By using NAP, administrators can place non-compliant computers onto restricted networks.	<input type="radio"/>	<input type="radio"/>
All computers that are not in compliance with NAP policies require manual intervention to be brought into compliance.	<input type="radio"/>	<input type="radio"/>
NAP can enforce that client computers are running a firewall.	<input type="radio"/>	<input type="radio"/>

Answer:

Explanation: **Answer Area**

	Yes	No
By using NAP, administrators can place non-compliant computers onto restricted networks.	<input checked="" type="radio"/>	<input type="radio"/>
All computers that are not in compliance with NAP policies require manual intervention to be brought into compliance.	<input type="radio"/>	<input checked="" type="radio"/>
NAP can enforce that client computers are running a firewall.	<input checked="" type="radio"/>	<input type="radio"/>

NEW QUESTION 150

What is the primary advantage of using Active Directory Integrated Zones?

- A. Zone encryption
- B. Password protection
- C. Non-repudiation
- D. Secure replication

Answer: D

Explanation: Reference: <http://books.google.com/books?id=CXy-2LBZCVgC&pg=PA201&dq=%22Active+Directory+Integrated+Zones%22,+Secure+replication&hl=en&sa=X&ei=9s92U-v1KI-zyASjzILIDg&ved=0CE0Q6AEwAQ#v=onepage&q=%22Active%20Directory%20Integrated%20Zones%22%2C%20Secure%20replication&f=false>

NEW QUESTION 154

The certificate of a secure public Web server on the Internet should be:

- A. Issued by a public certificate authority (CA)
- B. Signed by using a 4096-bit key
- C. Signed by using a 1024-bit key
- D. Issued by an enterprise certificate authority (CA)

Answer: A

NEW QUESTION 156

Account lockout policies are used to prevent which type of security attack?

- A. Brute force attacks
- B. Users sharing passwords
- C. Social engineering
- D. Passwords being reused immediately

Answer: A

NEW QUESTION 159

You sign up for an online bank account. Every 6 months, the bank requires you to change your password. You have changed your password 5 times in the past. Instead of coming up with a new password, you decide to use one of your past passwords, but the bank's password history prevents you on doing so. Select the correct answer if the underlined text does not make the statement correct Select "No change is needed" if the underlined text makes the statement correct.

- A. Minimum password age
- B. Maximum password duration
- C. Password complexity
- D. No change is needed.

Answer: D

NEW QUESTION 163

HOTSPOT

For each of the following statements, select Yes if the statement is true. Otherwise, select No. Each correct selection is worth one point.

Answer Area

	Yes	No
To protect users from untrusted browser pop-ups, you may set a default browser configuration that blocks all pop-ups and automated downloads.	<input type="radio"/>	<input type="radio"/>
Online pop-ups and dialog boxes can display a realistic operating system or application error messages.	<input type="radio"/>	<input type="radio"/>
Protecting users from untrusted pop-up applications is mostly a function of awareness.	<input type="radio"/>	<input type="radio"/>

Answer:

Explanation: Answer Area

	Yes	No
To protect users from untrusted browser pop-ups, you may set a default browser configuration that blocks all pop-ups and automated downloads.	<input type="radio"/>	<input checked="" type="radio"/>
Online pop-ups and dialog boxes can display a realistic operating system or application error messages.	<input checked="" type="radio"/>	<input type="radio"/>
Protecting users from untrusted pop-up applications is mostly a function of awareness.	<input checked="" type="radio"/>	<input type="radio"/>

NEW QUESTION 166

HOTSPOT

For each of the following statements, select Yes if the statement is true. Otherwise, select No. Each correct selection is worth one point.

Answer Area

	Yes	No
If your computer is on a domain, your network administrator can reset your password.	<input type="radio"/>	<input type="radio"/>
An administrator account can reset a password for a standard user account.	<input type="radio"/>	<input type="radio"/>
There is a risk of losing access to encrypted files if a password is reset.	<input type="radio"/>	<input type="radio"/>

Answer:

Explanation:

Answer Area

	Yes	No
If your computer is on a domain, your network administrator can reset your password.	<input checked="" type="radio"/>	<input type="radio"/>
An administrator account can reset a password for a standard user account.	<input checked="" type="radio"/>	<input type="radio"/>
There is a risk of losing access to encrypted files if a password is reset.	<input checked="" type="radio"/>	<input type="radio"/>

NEW QUESTION 170

You need to grant a set of users write access to a file on a network share. You should add the users to:

- A. A security group
- B. The Authenticated Users group
- C. The Everyone group
- D. A distribution group

Answer: B

NEW QUESTION 174

This question requires that you evaluate the underlined text to determine if it is correct. The first line of defense against attacks from the Internet is a software firewall.

Select the correct answer if the underlined text does not make the statement correct. Select "No change is needed" if the underlined text makes the statement correct.

- A. hardware firewall
- B. virus software
- C. radius server
- D. No change is needed

Answer: A

NEW QUESTION 175

The purpose of Microsoft Baseline Security Analyzer is to:

- A. List system vulnerabilities.
- B. Apply all current patches to a server.
- C. Set permissions to a default level.
- D. Correct a company's security state.

Answer: A

NEW QUESTION 177

To keep third-party content providers from tracking your movements on the web, enable InPrivate Browsing.

Select the correct answer if the underlined text does not make the statement correct. Select "No change is needed" if the underlined text makes the statement correct.

- A. InPrivate Filtering
- B. SmartScreen Filter
- C. Compatibility Mode
- D. No change is needed

Answer: A

NEW QUESTION 179

The WPA2 PreShared Key (PSK) is created by using a passphrase (password) and salting it with the WPS PIN.

Select the correct answer if the underlined text does not make the statement correct. Select "No change is needed" if the underlined text makes the statement correct.

- A. Service Set Identifier (SSID)
- B. Admin password
- C. WEP key
- D. No change is needed

Answer: A

NEW QUESTION 182
HOTSPOT
For each of the following statements, select Yes if the statement is true. Otherwise, select No. Each correct selection is worth one point.

Answer Area

	Yes	No
You can view audit logs in the Event Viewer.	<input type="radio"/>	<input type="radio"/>
Audit logs have a set size limit and cannot be adjusted.	<input type="radio"/>	<input type="radio"/>
You can configure an email event notification for an audited activity.	<input type="radio"/>	<input type="radio"/>

Answer:
Explanation: **Answer Area**

	Yes	No
You can view audit logs in the Event Viewer.	<input checked="" type="radio"/>	<input type="radio"/>
Audit logs have a set size limit and cannot be adjusted.	<input type="radio"/>	<input checked="" type="radio"/>
You can configure an email event notification for an audited activity.	<input checked="" type="radio"/>	<input type="radio"/>

NEW QUESTION 186
What is an example of non-propagating malicious code?

A. A back door
B. A hoax
C. A Trojan horse
D. A worm

Answer: A

NEW QUESTION 190
Which is the minimum requirement to create BitLocker-To-Go media on a client computer?

A. Windows XP Professional Service Pack 3
B. Windows Vista Enterprise Edition
C. Windows 7 Enterprise Edition
D. Windows 2000 Professional Service Pack 4

Answer: A

NEW QUESTION 191
Bridging is a process of sending packets from source to destination on OSI layer 3.
Select the correct answer if the underlined text does not make the statement correct. Select "No change is needed" if the underlined text makes the statement correct.

A. Routing
B. Switching
C. Repeating

D. No change is needed.

Answer: A

NEW QUESTION 195

In Internet Explorer 8, the InPrivate Browsing feature prevents:

- A. Unauthorized private data input.
- B. Unencrypted communication between the client computer and the server.
- C. User credentials from being sent over the Internet.
- D. Any session data from being stored on the computer.

Answer: D

Explanation: Reference: <http://windows.microsoft.com/en-us/windows/what-is-inprivate-browsing>

NEW QUESTION 196

Which two are included in an enterprise antivirus program? (Choose two.)

- A. Attack surface scanning
- B. On-demand scanning
- C. Packet scanning
- D. Scheduled scanning

Answer: BD

NEW QUESTION 197

HOTSPOT

For each of the following statements, select Yes if the statement is true. Otherwise, select No. Each correct selection is worth one point.

Answer Area

	Yes	No
An intruder can spoof MAC addresses to get around MAC address filtering.	<input type="radio"/>	<input type="radio"/>
Intruders can find a wireless network if the Service Set Identifier (SSID) is hidden.	<input type="radio"/>	<input type="radio"/>
WEP security is strong as long as it has a 128-bit key.	<input type="radio"/>	<input type="radio"/>

Answer:

Explanation: **Answer Area**

	Yes	No
An intruder can spoof MAC addresses to get around MAC address filtering.	<input checked="" type="radio"/>	<input type="radio"/>
Intruders can find a wireless network if the Service Set Identifier (SSID) is hidden.	<input checked="" type="radio"/>	<input type="radio"/>
WEP security is strong as long as it has a 128-bit key.	<input type="radio"/>	<input checked="" type="radio"/>

NEW QUESTION 201

HOTSPOT
For each of the following statements, select Yes if the statement is true. Otherwise, select No. Each correct selection is worth one point.

Answer Area

	Yes	No
IPsec requires network applications to be IPsec aware.	<input type="radio"/>	<input type="radio"/>
IPsec encrypts data.	<input type="radio"/>	<input type="radio"/>
IPsec adds overhead for all network communications for which it is used.	<input type="radio"/>	<input type="radio"/>

Answer:
Explanation: Answer Area

	Yes	No
IPsec requires network applications to be IPsec aware.	<input type="radio"/>	<input checked="" type="radio"/>
IPsec encrypts data.	<input checked="" type="radio"/>	<input type="radio"/>
IPsec adds overhead for all network communications for which it is used.	<input checked="" type="radio"/>	<input type="radio"/>

NEW QUESTION 206
The purpose of User Account Control (UAC) is to:

- A. Encrypt the user's account
- B. Limit the privileges of software
- C. Secure your data from corruption
- D. Facilitate Internet filtering

Answer: B

Explanation: User Account Control (UAC) is a technology and security infrastructure introduced with Microsoft's Windows machines. It aims to improve the security of Microsoft Windows by limiting application software to standard user privileges until an administrator authorizes an increase or elevation. In this way, only applications trusted by the user may receive administrative privileges, and malware should be kept from compromising the operating system.

NEW QUESTION 207
Keeping a server updated:

- A. Maximizes network efficiency
- B. Fixes security holes
- C. Speeds up folder access
- D. Synchronizes the server

Answer: B

NEW QUESTION 208
HOTSPOT
For each of the following statements, select Yes if the statement is true. Otherwise, select No. Each correct selection is worth one point.

Answer Area

	Yes	No
DNSSEC prevents spoofing of query responses.	<input type="radio"/>	<input type="radio"/>
Clients can verify that the DNS server that they are communicating with is legitimate.	<input type="radio"/>	<input type="radio"/>
DNSSEC prevents man-in-the-middle attacks for DNS queries.	<input type="radio"/>	<input type="radio"/>

Answer:

Explanation: Answer Area

	Yes	No
DNSSEC prevents spoofing of query responses.	<input checked="" type="radio"/>	<input type="radio"/>
Clients can verify that the DNS server that they are communicating with is legitimate.	<input checked="" type="radio"/>	<input type="radio"/>
DNSSEC prevents man-in-the-middle attacks for DNS queries.	<input checked="" type="radio"/>	<input type="radio"/>

NEW QUESTION 212

A mail system administrator scans for viruses in incoming emails to increase the speed of mail processing.
Select the correct answer if the underlined text does not make the statement correct. Select "No change is needed" if the underlined text makes the statement correct.

- A. Decrease the chances of a virus getting to a client machine
- B. Verify that the senders of the messages are legitimate
- C. Ensure that all links in the messages are trustworthy
- D. No change is needed.

Answer: A

NEW QUESTION 213

HOTSPOT
For each of the following statements, select Yes if the statement is true. Otherwise, select No. Each correct selection is worth one point.

Answer Area

	Yes	No
There are several built-in basic audit policies and advanced audit policies in Windows.	<input type="radio"/>	<input type="radio"/>
Advanced audit policies applied by a Group Policy are compatible with a basic audit policy.	<input type="radio"/>	<input type="radio"/>
A system access control list (SACL) enables administrators to log attempts to access a secured object.	<input type="radio"/>	<input type="radio"/>

Answer:

Explanation: Answer Area

	Yes	No
There are several built-in basic audit policies and advanced audit policies in Windows.	<input checked="" type="radio"/>	<input type="radio"/>
Advanced audit policies applied by a Group Policy are compatible with a basic audit policy.	<input type="radio"/>	<input checked="" type="radio"/>
A system access control list (SACL) enables administrators to log attempts to access a secured object.	<input checked="" type="radio"/>	<input type="radio"/>

NEW QUESTION 218

Setting a minimum password age restricts when users can:

- A. Request a password reset
- B. Change their passwords
- C. Log on by using their passwords
- D. Set their own password expiration

Answer: B

Explanation: Configure the minimum password age to be more than 0 if you want Enforce password history to be effective. Without a minimum password age, users can cycle through passwords repeatedly until they get to an old favorite.

NEW QUESTION 219

A group of users has access to Folder A and all of its contents. You need to prevent some of the users from accessing a subfolder inside Folder A. What should you do first?

- A. Disable folder sharing
- B. Hide the folder
- C. Change the owner
- D. Block inheritance

Answer: A

NEW QUESTION 222

You would implement a wireless intrusion prevention system to:

- A. Prevent wireless interference
- B. Detect wireless packet theft
- C. Prevent rogue wireless access points

D. Enforce SSID broadcasting

Answer: C

Explanation: Reference: http://en.wikipedia.org/wiki/Wireless_intrusion_prevention_system

NEW QUESTION 227

You are trying to establish communications between a client computer and a server. The server is not responding. You confirm that both the client and the server have network connectivity. Which should you check next?

- A. Microsoft Update
- B. Data Execution Prevention
- C. Windows Firewall
- D. Active Directory Domains and Trusts

Answer: D

NEW QUESTION 231

To protect systems from buffer overflow errors, you can use:

- A. Antivirus software
- B. Data Execution Prevention
- C. A proxy server
- D. An Intruder Prevention System

Answer: B

NEW QUESTION 234

Coho Winery wants to increase their web presence and hires you to set up a new web server. Coho already has servers for their business and would like to avoid purchasing a new one.

Which server is best to use as a web server, considering the security and performance concerns?

- A. SQL Server
- B. File Server
- C. Domain Controller
- D. Application Server

Answer: C

NEW QUESTION 237

.....

Thank You for Trying Our Product

We offer two products:

1st - We have Practice Tests Software with Actual Exam Questions

2nd - Questions and Answers in PDF Format

98-367 Practice Exam Features:

- * 98-367 Questions and Answers Updated Frequently
- * 98-367 Practice Questions Verified by Expert Senior Certified Staff
- * 98-367 Most Realistic Questions that Guarantee you a Pass on Your First Try
- * 98-367 Practice Test Questions in Multiple Choice Formats and Updates for 1 Year

100% Actual & Verified — Instant Download, Please Click
[Order The 98-367 Practice Test Here](#)