

## 200-310 Dumps

### Designing for Cisco Internetwork Solutions

<https://www.certleader.com/200-310-dumps.html>



**NEW QUESTION 1**

Which VPN tunneling technology supports IP multicast?

- A. IPsec direct encapsulation spoke-to-spoke
- B. IPsec direct encapsulation hub-to-spoke
- C. IPsec VTI
- D. Cisco Easy VPN

**Answer:** C

**NEW QUESTION 2**

What IP address is used for broadcast for 120.20.78.8/30?

- A. 120.20.78.11
- B. 120.20.78.8
- C. 120.20.78.12
- D. 120.20.78.1

**Answer:** A

**NEW QUESTION 3**

Which Data Centre connection support QoS full mesh deployment and typically offer SLA?

**Answer:**

**Explanation:** MPLS

**NEW QUESTION 4**

A small business owner has 200 staff members that occupy two floors of a building The owner wants to reduce the network infrastructure costs without losing too much network resiliency and scalability Which action meets these requirements?

- A. Combine access and core layers into one layer and keeping all other layers
- B. Combine access and distribution layers into one layer and keep all other layers
- C. Exclude access and distribution layer switches and connect everything to redundant core switches
- D. Combine core and distribution layers into one layer and keep all other layers.

**Answer:** A

**NEW QUESTION 5**

Which is part of the Prepare phase of PPDIOO?

- A. Obtain site contact information
- B. Perform network audit
- C. Identify customer requirements
- D. Perform gap analysis

**Answer:** C

**Explanation:**

PPDIOO Phase	Description
Prepare	Establishes organization and business requirements, develops a network strategy, and proposes a high-level architecture
Plan	Identifies the network requirements by characterizing and assessing the network, performing a gap analysis
Design	Provides high availability, reliability, security, scalability, and performance
Implement	Installation and configuration of new equipment
Operate	Day-to-day network operations
Optimize	Proactive network management; modifications to the design

Prepare Phase

The Prepare phase establishes organization and business requirements, develops a network strategy, and proposes a high-level conceptual architecture to support the strategy. Technologies that support the architecture are identified. This phase creates a business case to establish a financial justification for a network strategy.

**NEW QUESTION 6**

Which one of the following is “synchronous link” design?

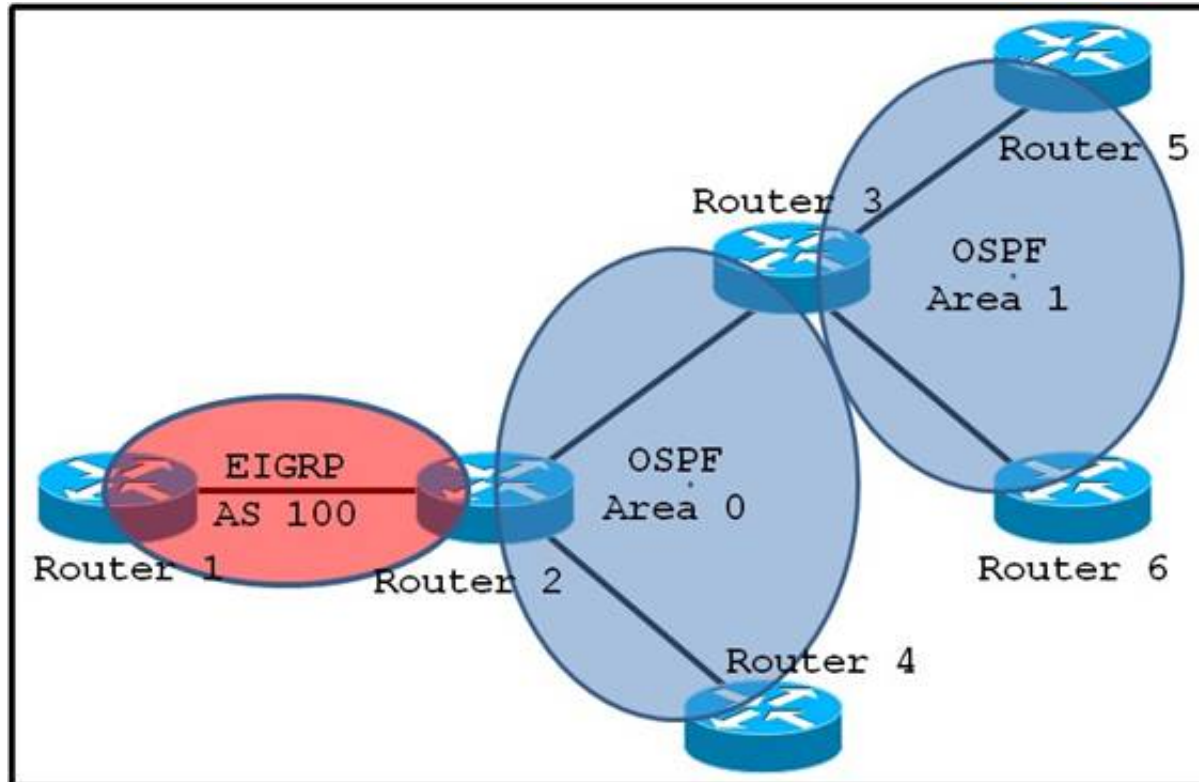
- A. SSL VPN over serial cable modem
- B. Bonded T1s
- C. Internet VPN
- D. MPLS VPN

**Answer:** B

**Explanation:** <https://community.spiceworks.com/topic/325935-mpls-speeds>

**NEW QUESTION 7**

Refer to the exhibit.



On which router should you configure redistribution?

- A. Router 1
- B. Router 2
- C. Router 3
- D. Router 4
- E. Router 5

**Answer:** B

**NEW QUESTION 8**

When is the Cisco FlexConnect design model recommended?

- A. when remote-site APs are centrally managed
- B. when each remote site has its own wireless controller
- C. when each remote site runs VSS
- D. when the remote sites use WAN optimization

**Answer:** A

**NEW QUESTION 9**

What phase of Cisco's PPDIOO includes the identification and resolution of issues prior to moving the entire network to production?

- A. Optimize
- B. Operate
- C. Implementation
- D. Design

**Answer:** A

**NEW QUESTION 10**

A large company requests a hierarchical design model. What tier should be free of physically connected hosts?

- A. core
- B. access
- C. aggregation
- D. distribution

**Answer:** A

**NEW QUESTION 10**

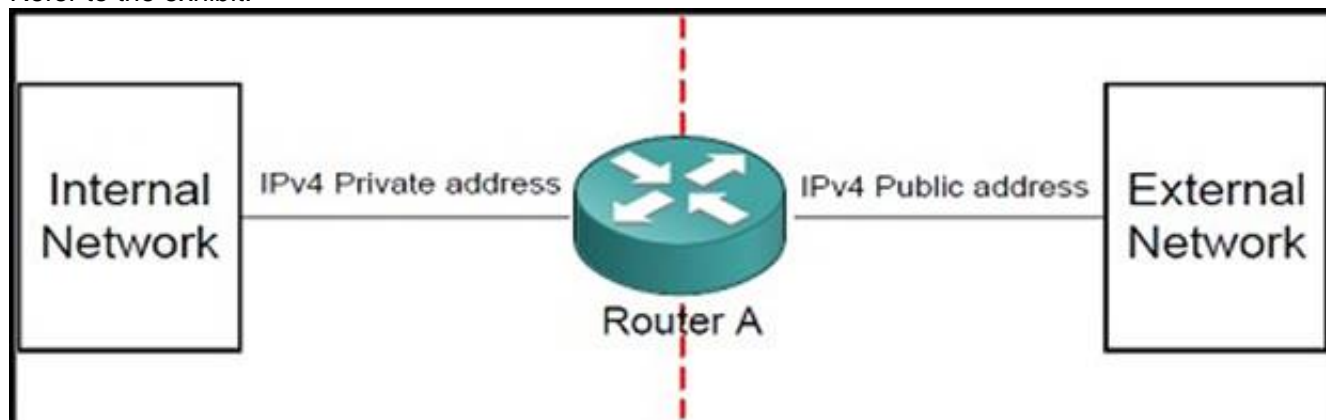
When designing a new enterprise campus network, what topology should be used for maximum scalability?

- A. flat
- B. three-layer
- C. star
- D. partial mesh
- E. full mesh

**Answer:** B

**NEW QUESTION 11**

Refer to the exhibit.



Which functionality must be enabled on router A to connect two networks for translating private addresses into "legal" public addresses on a one-for-one basis?

- A. NAT
- B. VLAN
- C. GARP
- D. PPP

**Answer:** B

**NEW QUESTION 12**

What is the optimal device and location to fulfill these requirements?

- provide early indication of reconnaissance and scanning activities with blocking capabilities
- require fewer interfaces to inspect traffic to the DMZ and internal network

- A. IPS inline outside of the firewall
- B. IPS inline inside the firewall
- C. Cisco IOS IPS on the border router
- D. passive IPS connected to a SPAN port outside of the firewall
- E. passive IPS connected to a SPAN port inside the firewall

**Answer:** A

**NEW QUESTION 16**

What tool would you use to capture, segregate and analyse IP traffic?

- A. Protocol Analyser
- B. NetFlow

**Answer:** B

**NEW QUESTION 21**

A network engineer must collect application-level information passing through a router. What two tools can provide this information? (Choose two.)

- A. NBAR
- B. CiscoWorks
- C. SNMP collector
- D. NetFlow collector
- E. Syslog

**Answer:** AD

**NEW QUESTION 24**

A network engineer needs to create a controller-based, high-density RF design. Which two factors determine the cell size? (Choose two.)

- A. antenna type
- B. ClientLink support
- C. TPC threshold setting
- D. QoS setting
- E. free space path loss

**Answer:** AC

**NEW QUESTION 26**

Which four services does the architecture for Media Services contain? (Choose four.)

- A. access services
- B. transport services
- C. storage services
- D. forwarding services
- E. session control services
- F. security services
- G. filtering services
- H. remote access services

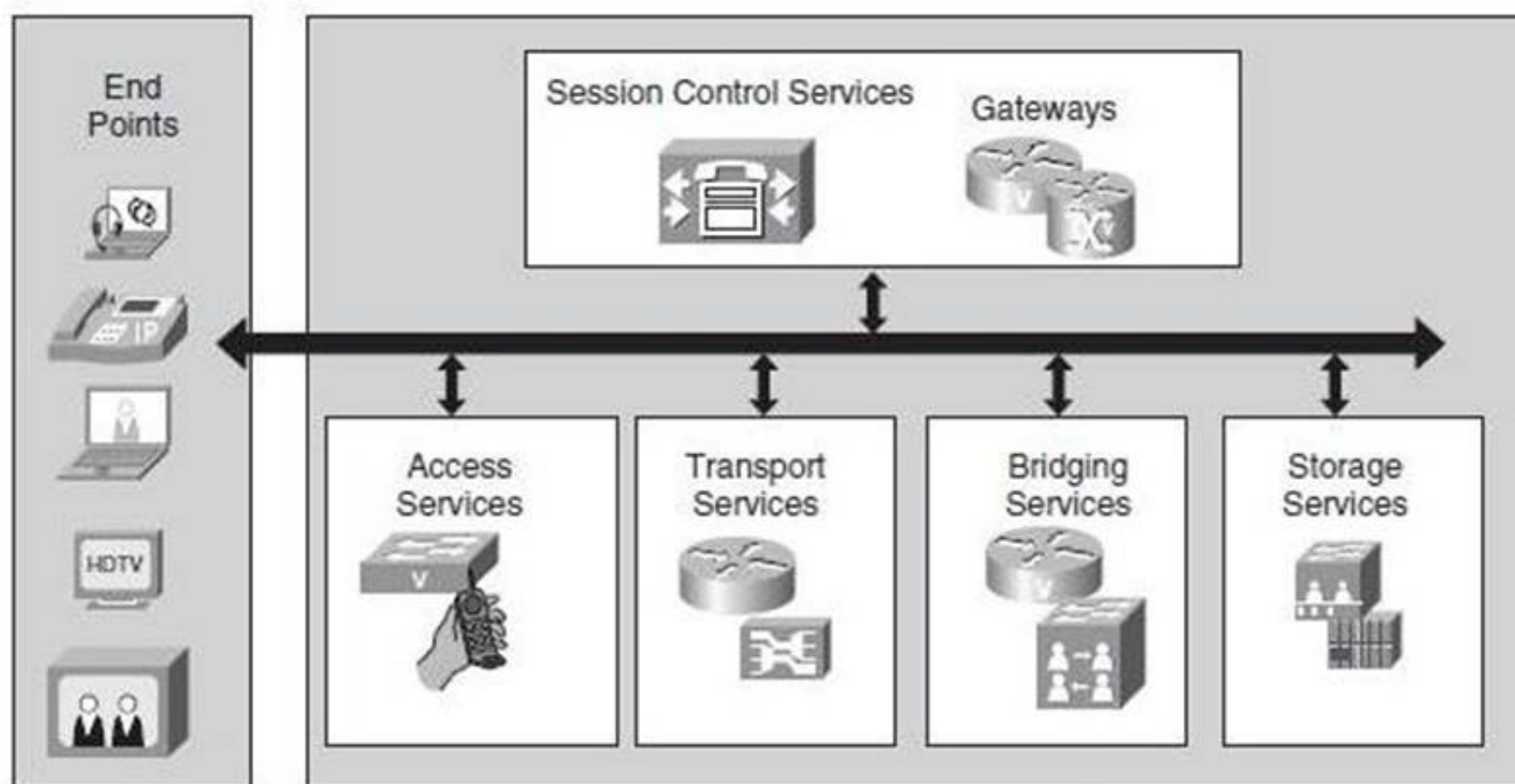
**Answer:** ABCE

**Explanation:** An architecture framework for media services supports different models of video models. As shown in Figure 14-13, the network provides service to video media in the Media Services Framework. Those services are access services, transport services, bridging services, storage servers, and session control services, which are provided to endpoints.

Access services provide identity of end devices, mobility, and location services. Transport services provide QoS for reliable packet delivery.

Bridging services provide transcoding, conferencing, and recording services of media streams.

Storage services provide capture and storage of media streams and content management and distribution. Session control services provide session signaling and control and gateway services.



**Figure 14-13** *Media Services Architectural Framework*

**NEW QUESTION 29**

A network engineer is following the Cisco enterprise architecture model. Where are aggregation switches found?

- A. Enterprise Campus
- B. Enterprise Edge
- C. SP Edge WAN
- D. Remote Module

**Answer:** A

**NEW QUESTION 32**

Which key feature does a modular design approach provide?

- A. performance
- B. manageability
- C. efficiency
- D. fault isolation

**Answer:** A

**NEW QUESTION 33**

Multicast has been enabled and configured in the Enterprise, and PIM Sparse-mode has been enabled on all VLANs. What feature is required to stop multicast traffic from being broadcasted on the access layer switches?

- A. IGMP snooping
- B. Multicast boundary filter
- C. PIM dense-mode
- D. Dynamic ARP inspection



**Answer:** A

**NEW QUESTION 37**

While designing a highly resilient infrastructure, which layer is typically a single point of failure?

- A. internet
- B. WAN
- C. distribution
- D. access

**Answer:** D

**NEW QUESTION 42**

What kind of servers you should place in DMZ?

- A. WWW
- B. FTP
- C. DHCP
- D. TACACS+
- E. NFP

**Answer:** AB

**NEW QUESTION 47**

Which two features are supported by single wireless controller deployments? (Choose two.)

- A. automatic detection and configuration of LWAPPs
- B. LWAPP support across multiple floors and buildings
- C. automatic detection and configuration of RF parameters
- D. Layer 2 and Layer 3 roaming
- E. controller redundancy
- F. mobility groups

**Answer:** AB

**NEW QUESTION 51**

What occurs to traffic when a Cisco APIC is removed from the data path of a Cisco ACI?

- A. The fabric continues to forward the traffic.
- B. The traffic is lost during convergence
- C. The traffic is queued during convergence
- D. The fabric reroutes the traffic to another APIC

**Answer:** A

**NEW QUESTION 52**

In which two modes can you deploy Cisco IPS appliances? (Choose two.)

- A. inline
- B. promiscuous
- C. VTP group
- D. threat mitigation
- E. threat detection

**Answer:** AB

**NEW QUESTION 56**

A network engineer must collect application-level information of deep attack?

- A. NBAR
- B. CiscoWorks
- C. SNMP collector
- D. NetFlow collector
- E. Syslog

**Answer:** A

**NEW QUESTION 61**

What are two reasons discontinuous IPv4 networks hinder scalability? (Choose two.)

- A. routing table bloat
- B. inability to utilize automatic summarization
- C. insufficient IP addresses
- D. slowed packet forwarding
- E. delayed interface queuing

**Answer:** AB

**NEW QUESTION 65**

Directory services and electronic messaging are performed at which layer of the network?

- A. core
- B. application
- C. distribution
- D. network

**Answer:** B

**NEW QUESTION 68**

Which item is the fundamental basis of a virtual network?

- A. a VRF instance
- B. a MIB database
- C. a GRE tunnel
- D. redundant hardware

**Answer:** A

**NEW QUESTION 73**

While preparing an overview of Internet facing DMZ for a customer, a consultant must identify the functionality to be placed in the DMZ. Which two functionalities are best suited for use in a DMZ? (Choose two.)

- A. enterprise NTP source
- B. DDOS protection
- C. remote access VPN termination
- D. web load balancer
- E. web security appliance

**Answer:** DE

**NEW QUESTION 74**

A network engineer is designing a solution that will monitor IP traffic through corporate routers with the ability to export the flows to a collection engine without using network probes. What technology meets this requirement?

- A. RMON
- B. NetFlow
- C. SNMP
- D. Syslog
- E. IP SLA

**Answer:** B

**NEW QUESTION 75**

What three design best practices are key functions of the distribution layer? (Choose three.)

- A. fault domain isolation
- B. admission control
- C. access switch aggregation
- D. QoS tagging
- E. address summarization
- F. end user and application isolation

**Answer:** ACE

**NEW QUESTION 78**

Which first-hop redundancy protocol dynamically distributes traffic across multiple gateways?

- A. HSRP
- B. GLBP
- C. VRRP
- D. IBGP

**Answer:** B

**NEW QUESTION 81**

What tool would you use to decode protocols?

- A. Protocol Analyser
- B. NetFlow
- C. Spectrum Analyser

**Answer:** A

**NEW QUESTION 82**

Which two connector actions are important when designing the core layer?

- A. port security
- B. PoE
- C. Access list requirements
- D. low latency
- E. redundancy

**Answer:** DE

**NEW QUESTION 83**

Which Cisco tool can prevent attacks from malware, viruses, and other malicious traffic?

- A. Cisco ISE
- B. Cisco IPS
- C. Cisco Secure ACS
- D. Cisco IDS

**Answer:** B

**NEW QUESTION 85**

Drag the descriptions on the left to the matching design category on the right.

enables a quick response to a design request	<b>Top-Down</b> <div></div> <div></div>
gives the big picture to the organization and designer	
incorporates organizational requirements	<b>Bottom-Up</b> <div></div> <div></div>
facilitates designs based on previous experience	

**Answer:**

**Explanation:** Bottom-up = Enables a quick response to a design request Top-Down = big picture to organization and designer Bottom up = Incorporate organized requirement

Top down = facilitate design

**NEW QUESTION 88**

What is the maximum number of switches in VSS?

- A. 2
- B. 4
- C. 6
- D. 8

**Answer:** A

**NEW QUESTION 91**

Which option do you use to provide dynamic utilization of WAN links based on latency?

- A. policy-based routing
- B. equal cost load balancing
- C. unequal cost load balancing
- D. Cisco Performance Routing

**Answer:** D



**NEW QUESTION 96**

Which two statements are true regarding a hierarchical network? (Choose two.)

- A. facilitates choosing the type of routing protocols to be used in the network
- B. provides scalability without affecting other layers and functionality
- C. provides better performance as network resources are efficiently utilized
- D. limits redundancy at the distribution layer
- E. complicates manageability because of the added security

**Answer:** BC

**NEW QUESTION 97**

Which option is a benefit of Cisco Discovery Protocol?

- A. provides information about directly connected Cisco devices
- B. provides greater detail about collected data, including time stamping
- C. combines with the network layer data that is gathered by NetFlow when using a NetFlow collector
- D. part of the IEEE 802.1ab standard

**Answer:** A

**NEW QUESTION 101**

Which statement about using STP in a redundant – link scenario is true?

- A. It provides the most efficient use to redundant links.
- B. it uses only one redundant link at any one time.
- C. it bonds the two links and treats them as one link.
- D. it balances traffic by transmitting packets on alternating links.

**Answer:** D

**NEW QUESTION 106**

Which two techniques can you use to reduce the size of a network routing table?

- A. implement VPN
- B. route summarization
- C. implement NAT
- D. configure static routing
- E. utilizing a default route

**Answer:** BE

**NEW QUESTION 108**

What are two benefits of a structured IPv4 addressing scheme? (Choose two.)

- A. reduces routing table size
- B. provides increased security
- C. allows for address translation to be performed
- D. improves manageability and troubleshooting
- E. increases high availability

**Answer:** AD

**NEW QUESTION 113**

Which two issues are typical challenges to network stability and reliability? (Choose two.)

- A. hardware failures
- B. layer 1 link failures
- C. application failures
- D. core layer failures
- E. distribution layer failures

**Answer:** AB

**NEW QUESTION 116**

A network engineer requires that an OSPF ASBR must only flood external LSAs only within its own area. What OSPF area type should be configured?

- A. Backbone Area
- B. Totally Stub Area
- C. Not So Stubby Area
- D. Stub Area

**Answer:** C

**NEW QUESTION 118**

Which advantage of using Spanning Tree Protocol is true?

- A. utilizes all available uplink bandwidth
- B. allows fast convergence after failure of a link or device
- C. allows dual-homed servers operate in active-active mode
- D. prevents network loops

**Answer:** D

**NEW QUESTION 121**

Which option is an object instance than an API identifies using informationmodel-based architecture?

- A. DN
- B. Class
- C. Method
- D. MO

**Answer:** A

**Explanation:** <https://www.cisco.com/c/en/us/products/collateral/cloud-systems-management/aci-fabric-controller/white-paper>

**NEW QUESTION 124**

A company is implementing an Identity Management solution with these characteristics:

- existing AAA Server
- Cisco Catalyst switches
- minimal added investments

Which Cisco Trust and Identity Management solution would you recommend?

- A. NAC Appliance
- B. Cisco IBNS
- C. CSM
- D. Cisco Security MARS

**Answer:** B

**NEW QUESTION 125**

A network engineer is tasked with summarizing the routes to a remote site. What is the optimal route statement to connect to the 192.168.101.0/24 and 192.168.102.0/24 networks across the corporate WAN?

- A. ip route 192.168.100.0 255.255.254.0
- B. ip route 192.168.100.0 255.255.252.0
- C. ip route 192.168.100.0 255.255.255.0
- D. ip route 192.168.101.0 255.255.254.0

**Answer:** B

**NEW QUESTION 126**

A customer ts questioning the additional infrastructure that is needed to design a three-tiered, hierarchical network. Which feature is a benefit of the distribution layer In a traditional design?

- A. creates access layer resiliency
- B. isolation of faults between the access and core layers
- C. extends the Layer 2 and Layer 3 boundary to the core layer
- D. provides additional security services against unauthorized access

**Answer:** B

**NEW QUESTION 129**

What are two classful routing protocols? (Choose two):

- A. RIP
- B. IGRP
- C. OSPF
- D. RIPv2
- E. BGP

**Answer:** AB

**NEW QUESTION 130**

What three primary sources of information are needed to perform a network audit? (Choose three.)

- A. existing documentation
- B. new documentation
- C. existing network management software

- D. new network management tools
- E. management personnel
- F. technical personnel

**Answer:** ACD

#### NEW QUESTION 132

Which mode is used to exclusively look for unauthorized access points?

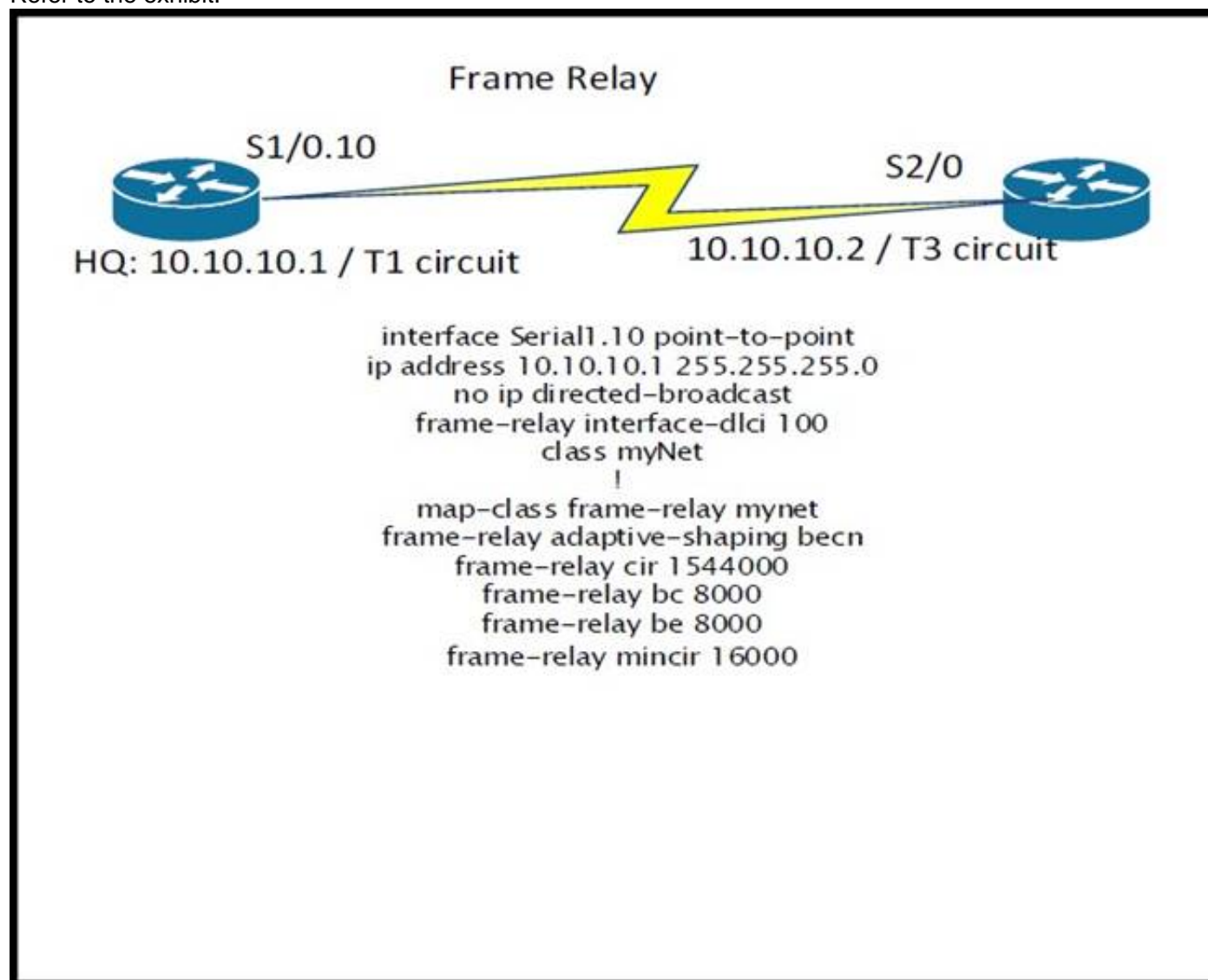
- A. monitor mode
- B. sniffer mode
- C. rogue detector mode
- D. local mode

**Answer:** C

**Explanation:** CISENU200\_310\_02222016.dat

#### NEW QUESTION 137

Refer to the exhibit.



A network engineer at a technical call center receives a call from a customer complaining that only 56 kbps of data can be transferred over the T1 Frame Relay WAN circuit at a remote site. The engineer checks the Frame Relay switch and confirms that only 56 kbps is being transferred over the circuit. The engineer requests the router configuration of the customer headquarters site router. What is causing this issue to occur?

- A. The wrong CIR is configured.
- B. The BECN configuration is causing this issue.
- C. The class name is spelled wrong under the interface.
- D. The wrong DLCI number is assigned to the interface.

**Answer:** C

#### NEW QUESTION 138

An organization is deciding what routing protocol to use throughout their network. What must be considered if routing is to be performed at the access layer?

- A. reduced scalability of the network when introducing a large number of switch blocks into the routing table
- B. centralized management of access control lists at the distribution layer
- C. reliability when implementing routing over spanning-tree at the access layer
- D. performance differences between core, distribution and access layer equipment

**Answer:** D

#### NEW QUESTION 142

Which network size can provide six /25 subnets while wasting the smallest number of IP addresses?

- A. 19

- B. 16
- C. 22
- D. 23

**Answer:** D

#### NEW QUESTION 146

What is the acceptable amount of one-way network delay for voice and video applications?

- A. 300 bytes
- B. 1 sec
- C. 150 ms
- D. 500 ms

**Answer:** C

**Explanation:** Delay Components in VoIP Networks

The ITU's G.114 recommendation specifies that the one-way delay between endpoints should not exceed 150 ms to be acceptable, commercial voice quality. In private networks, somewhat longer delays might be acceptable for economic reasons. The ITU G.114 recommendation specifies that 151-ms to 400-ms one-way delay might be acceptable provided that organizations are aware that the transmission time will affect the quality of user applications. One-way delays of above 400 ms are unacceptable for general network planning purposes.

#### NEW QUESTION 148

In which phase of the Cisco Design Lifecycle would you identify shortfalls in the network operation team's ability to support new technologies being introduced?

- A. In the Deployment stage of the Build phase.
- B. In the Assessment stage of the Plan phase
- C. In the Optimize stage of the Manage phase
- D. In the Validation stage of the Build phase.

**Answer:** B

#### NEW QUESTION 151

An organization needs a WAN Transport technology that meets these criteria:

- has a low initial cost
- provides low-to-medium BW
- has medium-to-high latency and jitter

Which technology should the organization use?

- A. DSL
- B. X.25
- C. ISDN
- D. wireless
- E. analog modem

**Answer:** A

#### NEW QUESTION 154

In which two places is redundancy recommended in an enterprise campus network design? (Choose two.)

- A. building distribution
- B. campus core
- C. building access
- D. e-commerce
- E. Internet connectivity

**Answer:** AB

#### NEW QUESTION 156

What type of topology supports WAN redundancy when a balance is required between cost, high availability, and performance?

- A. partial meshed
- B. full meshed
- C. star
- D. ring
- E. hub-and-spoke
- F. bus
- G. point-to-point

**Answer:** A

#### NEW QUESTION 157

You are deploying IP Telephony over a WAN. What will be the DSCP value for the voice traffic?

- A. EF
- B. AF41

- C. COS4
- D. BE

**Answer:** A

#### NEW QUESTION 159

At which layer of the network should you perform traffic filtering and Qos classification?

- A. session
- B. distribution
- C. application
- D. core

**Answer:** C

#### NEW QUESTION 163

A data center is reaching its power and cooling capacity. What two virtualization technologies can address the problem by directly reducing the number of physical devices? (Choose two.)

- A. virtual switching systems (VSS)
- B. virtual device contexts (VDC)
- C. virtual servers
- D. virtual routing and forwarding
- E. virtual port channels (vPC)
- F. virtual LANs

**Answer:** BC

#### NEW QUESTION 164

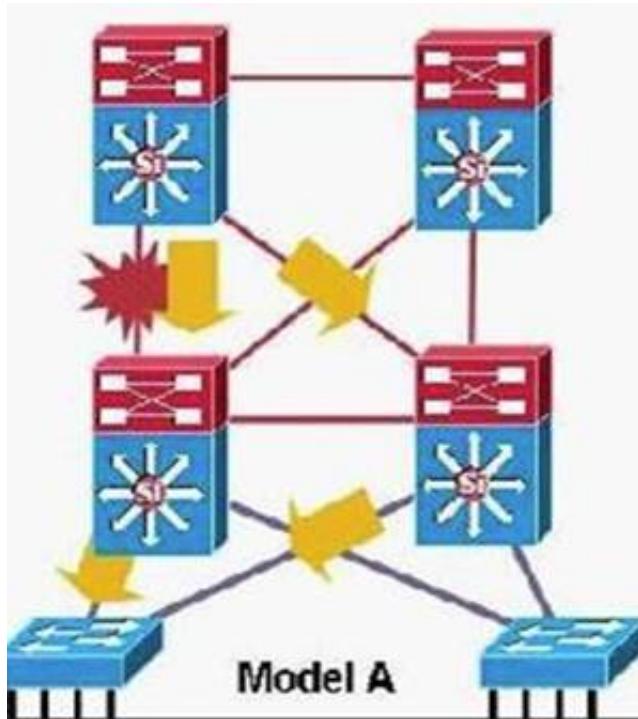
A customer is using a “guest” VLAN at a remote site to provide access for onsite guests or visitors to access the Internet, while prohibiting them from accessing internal sites. Which network technology isolates guest traffic while utilizing the existing corporate network?

- A. vPC
- B. frame relay
- C. DMVPN
- D. GRE tunnel

**Answer:** D

#### NEW QUESTION 169

Refer to the exhibit.



The organization is migrating away from FHRP. VSS has been implemented on a pair of Cisco Catalyst 6500 Series Switches. In order to avoid changes to end hosts, the default gateway is carried over to the SVI on the VSS. Why does the implementation plan require a four-hour wait after removing the FHRP configuration?

- A. The VLAN interface MAC address and the FHRP MAC address are differen
- B. It takes four hours for the VLAN interface to come up.
- C. The SVI IP address and the FHRP IP address are differen
- D. It takes four hours for the SVI to come up.
- E. The VLAN interface MAC address and the FHRP MAC address are differen
- F. It takes four hours for the ARP cache to time out.
- G. The VLAN interface IP address and the FHRP IP address are differen
- H. It takes four hours for the VLAN interface to come up.
- I. The VLAN interface IP address and the FHRP IP address are differen
- J. It takes four hours for the ARP cache to time out.

**Answer:** C



**NEW QUESTION 172**

Which design is the recommended geometric design for routed topologies?

- A. linear
- B. triangular
- C. rectangular
- D. circular

**Answer:** B

**NEW QUESTION 174**

According to fundamental design principles, which location is best for implementing Cisco QoS policies?

- A. hardware
- B. software
- C. Cisco 3900 Series Integrated Services Routers running IOS software
- D. WAN routers running IOS software

**Answer:** A

**NEW QUESTION 178**

What statement about EVN is true?

- A. Support RIP
- B. Support OSPFV3
- C. Required LDP
- D. Support as many as 32 virtual networks per device

**Answer:** D

**Explanation:** <http://www.cisco.com/c/en/us/td/docs/ios-xml/ios/evn/configuration/xr-3s/evn-xr-3s-book/evn-overview.html>

**NEW QUESTION 181**

How does the use of multiple areas in a link state routing protocol improve network scalability?

- A. reduces network bandwidth
- B. permits partial table updates
- C. enables route summarization
- D. overcomes router hop limit.

**Answer:** C

**NEW QUESTION 186**

Which first-hop redundancy protocol dynamically distributes client traffic between multiple routers?

- A. HSRP
- B. VRRP
- C. GLBP
- D. IGRP

**Answer:** C

**NEW QUESTION 189**

What is the technology that allows you to combine more than two switches?

- A. Stackwise
- B. VSS
- C. vPC
- D. EtherChannel

**Answer:** A

**NEW QUESTION 191**

Which two options are benefits of using a modular network architecture? (Choose two.)

- A. facilitates troubleshooting
- B. accurate monitoring
- C. consistent documentation
- D. increased flexibility
- E. reduced cabling requirements

**Answer:** AD

**NEW QUESTION 192**

Which benefit is an advantage of route summarization?

- A. It reduces the size of the routing table.
- B. It causes routes to be updated more frequently.
- C. It lowers the cost metric.
- D. It enables neighbor discovery.

**Answer:** A

#### NEW QUESTION 196

Which protocol is used for voice bearer traffic?

- A. MGCP
- B. RTP
- C. SCCP
- D. CDP
- E. ICMP

**Answer:** B

#### NEW QUESTION 201

Which two options are benefits of utilizing the Cisco Lifecycle approach when designing enterprise networks? (Choose two.)

- A. identifies power consumption costs
- B. increases business agility
- C. allows extended access to business partners
- D. increases network ownership
- E. improves network availability

**Answer:** BE

#### NEW QUESTION 205

What design feature should be considered when accessing resources from a remote data center over a WAN connection?

- A. security
- B. bandwidth
- C. reliability
- D. management

**Answer:** B

#### NEW QUESTION 208

What are the three models that are required in the systematic approach of the top-down design methodology? (Choose three.)

- A. logical
- B. physical
- C. layered
- D. network components
- E. technological
- F. protocols
- G. virtual

**Answer:** ABC

#### NEW QUESTION 210

Which connection provides cost effective backup connectivity for a branch network?

- A. ATM
- B. MPLS
- C. SSL VPN
- D. Ineternet VPN

**Answer:** D

#### NEW QUESTION 213

An engineer is designing a network that is divided into multiple areas and supports a mixed vendor routing environment. Which interior gateway protocol must be selected?

- A. EIGRP
- B. OSPF
- C. BGP
- D. RIPv2

**Answer:** A

**Explanation:** <https://www.cisco.com/c/en/us/products/collateral/switches/catalyst-6800-series-switches/guide-c07-733457.htm>

**NEW QUESTION 217**

Which command is correct for creating a virtual interface on a Cisco wireless controller?

- A. config create interface
- B. tag interface
- C. config interface address
- D. untag interface

**Answer: C**

**NEW QUESTION 218**

What are two important aspects to consider when looking at backup circuit options for a branch location? (Choose two)

- A. local exchange carrier diversity
- B. type of dynamic routing protocol
- C. type of core switch
- D. backup MPLS connection
- E. Internet service provider diversity

**Answer: BE**

**NEW QUESTION 223**

What design requirement is necessary for campus network access layer switching?

- A. high cost per port
- B. high availability
- C. high scalability
- D. high performance

**Answer: C**

**NEW QUESTION 228**

Under which phase of the Cisco Design Lifecycle would you evaluate the network infrastructure for its adherence to best practices and corporate policies?

- A. In the Validation stage of the Build phase
- B. In the Deployment stage of the Build phase
- C. In the Assessment stage of the Plan phase
- D. In the Optimize stage of the Manage phase

**Answer: A**

**NEW QUESTION 229**

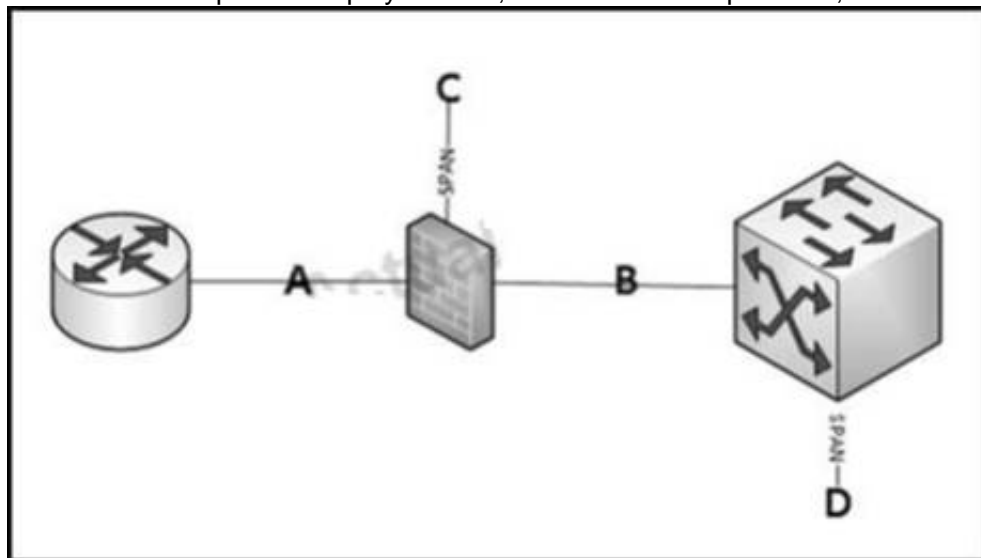
How many switches can be combined into a single network element using VSS?

- A. 4
- B. 6
- C. 8
- D. 2

**Answer: D**

**NEW QUESTION 233**

What is the best point to deploy the IPS, not to have false positives, since the traffic is already filtered?



- A. Inline before the firewall
- B. Inline after the firewall
- C. Passive of the firewall
- D. Passive of the Switch

**Answer:** B

**Explanation:** <https://supportforums.cisco.com/t5/intrusion-prevention-systems-ids/correct-placement-of-ids-ips-in-network-ar>

#### NEW QUESTION 236

Which Cisco tool provides network accounting, monitoring, and routing information?

- A. NBAR
- B. NetFlow
- C. Cisco Prime Collaboration Deployment
- D. CiscoWorks

**Answer:** B

#### NEW QUESTION 239

Which statement about using VSS on a pair of switches is true?

- A. IT enables the pair to operate as one logical switch.
- B. It requires HSRP
- C. It enables the administrator to manage each switch separately
- D. it blocks traffic on the redundant link to prevent loops.

**Answer:** A

**Explanation:** <https://www.cisco.com/c/en/us/td/docs/switches/lan/catalyst6500/ios/12-2SX/configuration/guide/book/vss.html>

#### NEW QUESTION 243

OSPF will be used as the IGP within a campus network. Which two things should you consider before deployment? (Choose two.)

- A. All areas need to connect back to area 0.
- B. The OSPF process number on each router should match.
- C. NSSA areas should be used when an area cannot connect directly to area 0.
- D. Stub areas should be connected together using virtual links.
- E. ECMP may cause undesired results depending on the environment.

**Answer:** AE

#### NEW QUESTION 245

Which two options should be considered when designing an OSPF network? (Choose two.)

- A. CDP should be incorporated.
- B. Ensure the address space is summarizable.
- C. There is a limit on available AS numbers.
- D. Design STP to mirror the OSPF design.
- E. Configure nonbackbone areas as stub areas.

**Answer:** BE

#### NEW QUESTION 247

From which DNS record can a Cisco wireless AP, running Cisco WLC version 6.0 or later, retrieve bootstrap information?

- A. cisco-capwap-controller
- B. the DNS A record of the controller hostname
- C. the DHCP Option 43 name
- D. cisco-lwapp-controller

**Answer:** A

#### NEW QUESTION 248

Which two options best describe the top-down design approach? (Choose two)

- A. The approach begins with the needs of the organization
- B. The design will meet both current and future requirements.
- C. Organizational requirements should not be included.
- D. The design is based on previous experience and allows for a quick solution.
- E. The approach begins with the physical layer of the OSI model.

**Answer:** AB

**Explanation:** [https://www.cisco.com/c/dam/en\\_us/training-events/le31/le46/cln/qlm/CCDA/design/top-down-approach-to-net](https://www.cisco.com/c/dam/en_us/training-events/le31/le46/cln/qlm/CCDA/design/top-down-approach-to-net)

#### NEW QUESTION 251

What are two advantages of employing scalability when designing a campus network? (Choose two.)

- A. reduces operational cost
- B. higher port density
- C. investment protection
- D. consistent operation
- E. improved fault tolerance

**Answer:** DE

**NEW QUESTION 256**

which QoS level should VOIPset be configured on WLC ?

- A. Platinum
- B. Gold
- C. Premier
- D. Critical

**Answer:** A

**NEW QUESTION 259**

What phase of Cisco's PPDIOO is the final test of the appropriateness of the design?

- A. Operate
- B. Optimize
- C. Design
- D. Implement

**Answer:** A

**NEW QUESTION 262**

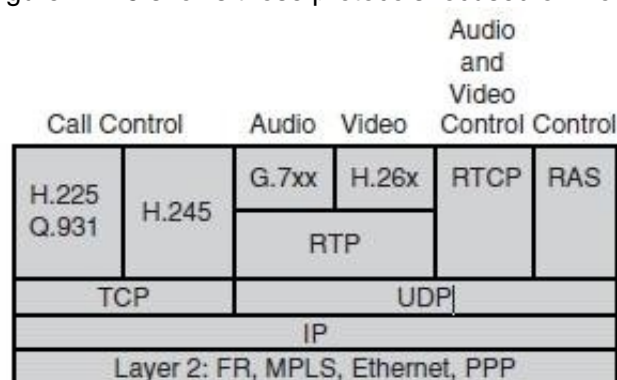
Which protocol is used for voice bearer traffic?

- A. MGCP
- B. RTP
- C. SCCP
- D. CDP
- E. ICMP

**Answer:** B

**Explanation:** VoIP Control and Transport Protocols

A number of different protocols are used in a VoIP environment for call control, device provisioning, and addressing. Figure 14-15 shows those protocols focused on VoIP control and transport.



**NEW QUESTION 265**

When integrating services with Cisco ACI Service Graphs, which tool can be used for integrated Configuration management?

- A. IOS
- B. REST API
- C. APIC CLI
- D. HTML

**Answer:** B

**Explanation:** Integrated configuration management using the APIC GUI, REST API or Python scripts, all based on a consistent ACI object model  
[https://www.cisco.com/c/en/us/td/docs/switches/datacenter/aci/apic/sw/1-x/Operating\\_ACI/guide/b\\_Cisco\\_Oper](https://www.cisco.com/c/en/us/td/docs/switches/datacenter/aci/apic/sw/1-x/Operating_ACI/guide/b_Cisco_Oper)

**NEW QUESTION 266**

You want to gather as much detail as possible during a network audit, to include data time stamping across a large number of interfaces, customized according to interface, with a minimal impact on the network devices themselves. Which tool would you use to meet these requirements?

- A. RMON
- B. SNMPv3



- C. NetFlow
- D. Cisco Discovery Protocol

**Answer:** C

**Explanation:** NetFlow provides extremely granular and accurate traffic measurements and a high-level collection of aggregated traffic. The output of netflow information is displayed via the show ip cache flow command on routers. The Table shows a description of the fields for NetFlow output.

Table. Netflow Output escription

Field	Description
Bytes	Number of bytes of memory that are used by the NetFlow cache
Active	Number of active flows
Inactive	Number of flow buffers that are allocated in the Netflow cache
Added	Number of flows that have been created since the start of the summary
Exporting flows	IP address and UDP port number of the workstation to which flows are exported
Flows exported	Total number of flows export and the total number of UDP datagrams
Protocol	IP protocol and well-known port number
Total Flows	Number of flows for this protocol since the last time that statistics were cleared
Flows/sec	Average number of flows this protocol per second
Packets/flow	Average number of packets per flow per second
Bytes/pkt	Average number of bytes for this protocol
Packets/sec	Average number of packets for this protocol per second

#### NEW QUESTION 271

A design engineer must send management information messages across the public internet. What solution provides a secure and encrypted method for passing these messages?

- A. SNMP v3
- B. NetFlow v9
- C. Syslog Traps
- D. Secure Shell v2
- E. SNMP v2

**Answer:** A

#### NEW QUESTION 274

Which statement is true about using a DNS server to discover a controller IP?

- A. The AP sends a discovery request to the first controller on the list and then goes down the list chronologically until it receives a discovery response.
- B. The AP sends a discovery request to the last controller on the list and then goes up the list chronologically until it receives a discovery response.
- C. The AP sends a discovery request to all controllers on the list simultaneously.
- D. Multiple controller IP addresses in a DNS response are not supported.

**Answer:** C

#### NEW QUESTION 275

Drag and drop the network virtualization features from the left onto the correct functions on the right.

SONA	ensures that legitimate users and devices are recognized and authorized entry to their assigned portions of the network
access control	ensures that a legitimate user or device is mapped to the correct secure set of available resources
service edge	ensures the delivery of identity services
path isolation	ensures that the right services are accessible to the legitimate set or sets of users and devices

**Answer:**

**Explanation:**

SONA	access control
access control	path isolation
service edge	SONA
path isolation	service edge

**NEW QUESTION 278**

Which three options are characteristics of data center evolution? (Choose three.)

- A. consolidation
- B. virtualization
- C. automation
- D. standardization
- E. optimization
- F. modulation

**Answer:** ABC

**NEW QUESTION 279**

Which two design criteria require VLANs in a proposed solution? (Choose two.)

- A. video streaming on the LAN
- B. security between departments
- C. the segmenting of collision domains

- D. the segmenting of broadcast domains
- E. the use of multivendor equipment
- F. a limited corporate budget

**Answer:** BD

**NEW QUESTION 282**

A network design shows two routers that are directly connected to an Ethernet switch using optical connections. There is an OSPF adjacency between the routers. In this design, which solution ensures that interface-down detection is reported as quickly as possible to the IGP?

- A. optimized OSPF SPF timers
- B. Bidirectional Forwarding Detection
- C. automatic protection switching
- D. optimized OSPF LSA timers
- E. Ethernet OAM CFM monitoring

**Answer:** B

**NEW QUESTION 287**

What is a benefit of IPv6 over IPv4 addresses?

- A. shorter addresses
- B. automatic summarization
- C. hierarchal global address space
- D. faster IGP convergence

**Answer:** C

**NEW QUESTION 291**

Which two considerations are important when designing the core layer? (Choose two)

- A. port security
- B. PoE
- C. Access list requirements
- D. low latency
- E. redundancy

**Answer:** DE

**NEW QUESTION 292**

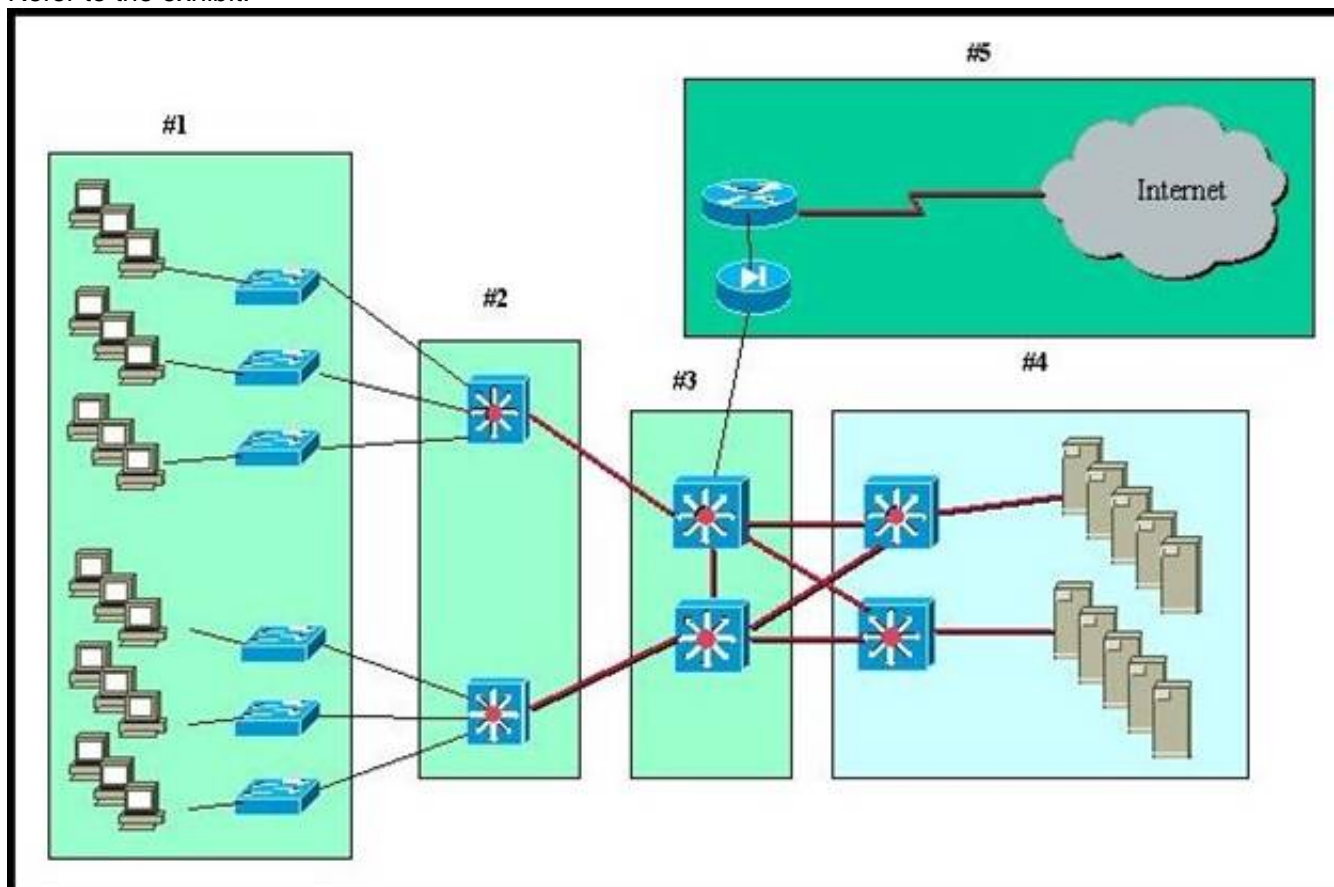
Which statement is true concerning the data center distribution (aggregation) layer design?

- A. With Layer 3 at the aggregation layer, the physical loops in the topology must still be managed by STP.
- B. The boundary between Layer 2 and Layer 3 must reside in the multilayer switches, independent of any other devices.
- C. A mix of both Layer 2 and Layer 3 access is the most optimal.
- D. In a small data center, the aggregation layer can connect directly to the campus core, exchanging IP routes and MAC address tables.

**Answer:** C

**NEW QUESTION 294**

Refer to the exhibit.



A standard Layer 2 campus network design is pictured. Which numbered box represents the core layer?

- A. #1
- B. #2
- C. #3
- D. #4
- E. #5

**Answer:** C

#### NEW QUESTION 298

Which statement about VSS is true?

- A. it can maintain the topology independently of STP
- B. it requires HSRP.
- C. it requires STP for link redundancy
- D. it has two control planes.

**Answer:** A

#### NEW QUESTION 299

Which statement about route summarization is true?

- A. Summarization is supported by every routing protocol
- B. EIGRP can be configured to automatically summarize VLSM networks.
- C. When it is implemented routing tables are smaller
- D. ACLs can be applied to automatically summarize routes.

**Answer:** D

#### NEW QUESTION 300

Which feature enables the VRRP-enabled router to regain the master VRRP status upon recovery from a failure?

- A. tracking
- B. preemption
- C. delay
- D. priority

**Answer:** A

#### NEW QUESTION 303

Router A has three feasible successors to the 192.168.1.0/24 network, which are listed here: Option 1 has a metric of 8123228.

Option 2 has a metric of 2195467. Option 3 has a metric of 8803823.

The variance 4 command was issued on Router A. How many active entries does Router A have in its routing table for the 192.168.1.0/24 network?

- A. 1
- B. 2
- C. 3

**Answer:** C

#### NEW QUESTION 308

An engineer is designing a new modular network topology. What is one advantage to using a hierarchical design?

- A. It supports unequal cost paths.
- B. It provides additional fault tolerance.
- C. It enables the network to scale.
- D. It manually controls failover.

**Answer:** D

#### NEW QUESTION 311

A network architect working for a larger financial institutions is designing a VPN solution that must include encryption Which VPN type requirement?

- A. GETVPN (Group Encrypted Transport VPN)
- B. L2VPN
- C. MPLS VPN
- D. L3VPN

**Answer:** A

**Explanation:** <https://supportforums.cisco.com/t5/vpn/l3vpn-and-ipsec/td-p/2557205> [https://www.cisco.com/c/dam/en/us/products/collateral/security/group-encrypted-transport-vpn/prod\\_presentatio](https://www.cisco.com/c/dam/en/us/products/collateral/security/group-encrypted-transport-vpn/prod_presentatio)

#### NEW QUESTION 316

What two addresses are defined under RFC 1918? (Choose two.)



- A. 19.22.37.1
- B. 10.1.7.19
- C. 127.0.0.1
- D. 172.31.1.1
- E. 239.15.12.1

**Answer:** BD

#### NEW QUESTION 320

Which statement about modular network design is true?

- A. Each deployed module is identical to the others, simplifying configuration
- B. Each module include access, distribution, and core layers
- C. It is a flexible architecture that simplifies design, management and troubleshooting
- D. It is complex and should be used only in specialized situations

**Answer:** B

#### NEW QUESTION 321

Which RFC defines the IPv6 standard?

- A. RFC 1918
- B. RFC 2338
- C. RFC 2460
- D. RFC 2740

**Answer:** C

#### NEW QUESTION 323

A company would like to distribute a VM hosting cluster between three data centers with the capability to move VMs between sites. The connectivity between data centers is IP only, and the new design should use the existing WAN. Which Layer 2 tunneling technology should be used?

- A. VPLS
- B. L2TPv3
- C. OTV
- D. AToM

**Answer:** C

#### NEW QUESTION 325

Which design enables easy and flexible scaling in the Cisco Enterprise Architecture model?

- A. modular
- B. top-down
- C. bottom-up
- D. full-mesh

**Answer:** A

#### NEW QUESTION 327

In an EAP-enabled WLAN, which component sends the EAP identity request?

- A. WLAN controller
- B. ACS server
- C. access point
- D. wireless client

**Answer:** A

#### NEW QUESTION 330

When designing changes to an existing network which tow options are documented to understand environmental constraints? (Choose two)

- A. location of existing document
- B. floor and rack space availability
- C. host naming conventions
- D. heating and air conditioning
- E. utilization of network resources

**Answer:** DE

#### NEW QUESTION 333

An engineer is planning branch WAN links to support unified communications. Which DSCP value must be assigned to voice traffic?

- A. EF
- B. AF41



- C. COS4
- D. BE

**Answer:** A

**Explanation:** [https://www.cisco.com/c/en/us/td/docs/solutions/Enterprise/WAN\\_and\\_MAN/QoS\\_SRND/QoS-SRND-Book/Q](https://www.cisco.com/c/en/us/td/docs/solutions/Enterprise/WAN_and_MAN/QoS_SRND/QoS-SRND-Book/Q)

#### NEW QUESTION 338

A customer is deploying a centralized communications infrastructure to a small remote construction site that has satellite-based Internet connectivity if the expected latency is about 500 ms, which description of the user experience is true?

- A. minimal delay and conversation overlap
- B. Phones will not complete registration to the centralized cluster
- C. significant delay and conversation overlap
- D. no delay or conversation overlap

**Answer:** D

#### NEW QUESTION 339

A startup company wants to deploy the Cisco IP Telephony solution. Which two actions are appropriate design approaches? (Choose two.)

- A. Connect user IP phones to the Ethernet switches of access layer.
- B. Connect IP phones to the Ethernet switches of data center module.
- C. Connect Cisco Unified Communications manager to the Ethernet switches of data center module.
- D. Connect SIP trunks for PSTN connectivity to Ethernet switches of campus core layer.
- E. Connect Cisco Unified Communications Manager to the Ethernet switches of the campus core layer.

**Answer:** AE

#### NEW QUESTION 343

WAN backup over the Internet is often used to provide primary connection redundancy. Which is the most important consideration when passing corporate traffic over the public Internet?

- A. security
- B. static versus dynamic routing
- C. bandwidth
- D. QoS
- E. latency

**Answer:** A

#### NEW QUESTION 347

What IPv4 addressing technique is used for proper address planning to reduce the number of entries in a routing table?

- A. filtering
- B. tunneling
- C. summarization
- D. translation
- E. supernetting

**Answer:** C

#### NEW QUESTION 349

Which three layers comprise the traditional hierarchical model? (Choose three.)

- A. core layer
- B. distribution layer
- C. access layer
- D. aggregation layer
- E. network layer
- F. Internet layer

**Answer:** ABC

#### NEW QUESTION 353

What Routing Protocol is classfull

- A. EIGRP
- B. IGRP
- C. RIPv1
- D. RIPv2
- E. eBGP

**Answer:** CD

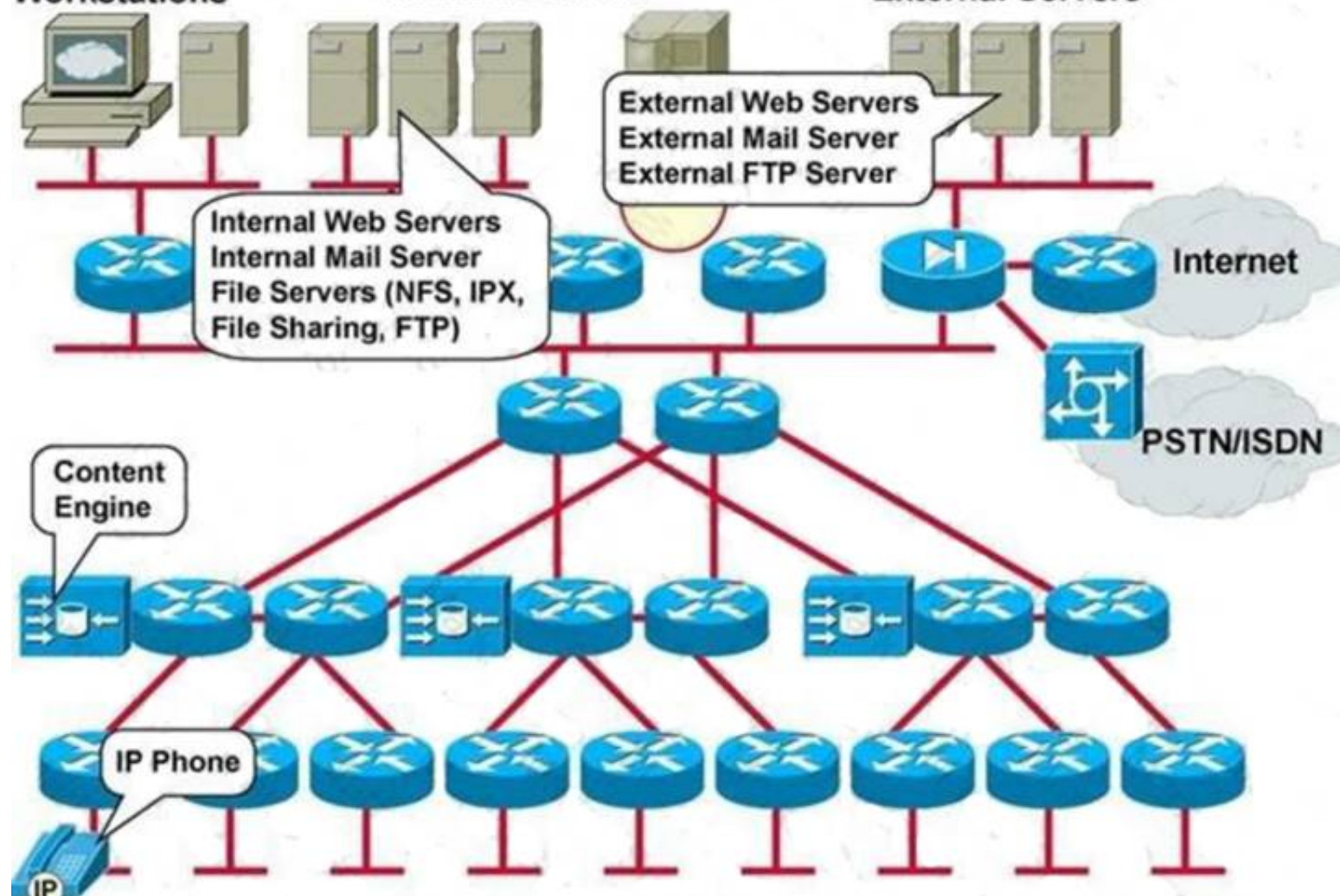
**NEW QUESTION 358**

Refer to the exhibit.

**Management Workstations**

**Internal Servers**

**External Servers**



Which element or elements of the existing network infrastructure does this network map emphasize?

- A. network services
- B. network protocols
- C. the OSI data link layer
- D. network applications

**Answer: D**

**NEW QUESTION 362**

The spanning tree topology can be simplified by deploying what Cisco NX-OS technology in the distribution and access layer?

- A. VDC
- B. vPC
- C. Rapid PVST+
- D. VSS
- E. Flex Links

**Answer: B**

**NEW QUESTION 364**

What network technology consolidates network and storage traffic in the data center?

- A. virtual storage-area network
- B. unified fabric
- C. unified computing system
- D. virtual switching system

**Answer: B**

**NEW QUESTION 366**

For a VLAN that requires 60 hosts, which subnet is the most efficient?

- A. 172.31.17.0/27
- B. 10.0.0.1/20
- C. 192.68.15.0/24
- D. 10.10.10.0/26

**Answer: D**

**NEW QUESTION 368**

Which two major campus design models does the cisco unified wireless network support?

- A. Cisco FlexConnect

- B. N+N+1
- C. Deterministic
- D. Local Mode
- E. Dynamic

**Answer:** AD

**Explanation:** <https://www.cisco.com/c/dam/en/us/td/docs/solutions/CVD/Apr2014/CVD-CampusWirelessLANSDesignGuide-> Wireless Design Models Cisco Unified Wireless networks support two major campus design models: Local mode and Cisco FlexConnect.

#### NEW QUESTION 371

Which option best describes the high-level design document?

- A. It includes specific information such as hardware models, software versions, IP addressing, and routing protocols.
- B. It contains the test plan to certify that the customer's network is ready for use.
- C. it contains the steps needed to install and configure the network equipment and the steps that verify basic network operation.
- D. it includes business and technical requirements and the proposed network architecture.

**Answer:** D

**Explanation:** <https://learningnetwork.cisco.com/thread/98302>

"High-level design (HLD) explains the architecture that would be used for developing a software product. The architecture diagram provides an overview of an entire system, identifying the main components that would be developed for the product and their interfaces. The HLD uses possibly nontechnical to mildly technical terms that should be understandable to the administrators of the system

#### NEW QUESTION 375

Which IP address can be routed to cross the public Internet?

- A. 10.31.1.1
- B. 192.168.32.1
- C. 172.32.1.1
- D. 169.254.32.1

**Answer:** C

#### NEW QUESTION 380

For a VLAN that requires 70 hosts, which subnet is the most efficient?

- A. 10.0.0.1/8
- B. 172.31.17.0/26
- C. 192.168.1.0/25
- D. 192.168.15.0/24

**Answer:** C

#### NEW QUESTION 385

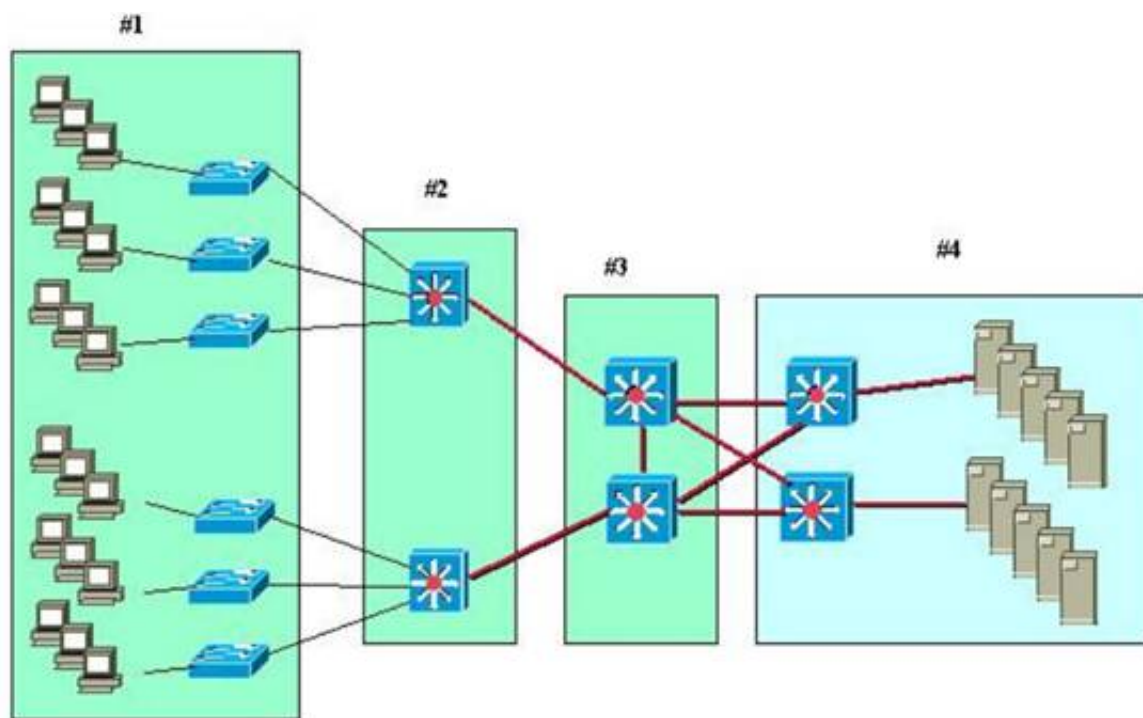
Which type of structure consists of the addressing, routing protocols, QoS, and security components?

- A. logical
- B. physical
- C. layered
- D. virtual

**Answer:** A

#### NEW QUESTION 389

Refer to the exhibit.



A standard, Layer 2 campus network design is pictured. Which numbered box represents the distribution layer?

- A. #1
- B. #2
- C. #3
- D. #4

**Answer:** B

#### NEW QUESTION 393

An engineer wants to ensure that the Spanning Tree topology appears loop free while redundant switches are present. Which Layer 2 technology must be used?

- A. VPC
- B. PaGP
- C. LACP
- D. OTV

**Answer:** C

#### NEW QUESTION 395

Which virtualization solution provides redundancy using a pair of switches that appear as one logical switch and removes the need for a First HOP Redundancy Protocol?

- A. VDC
- B. VRRP
- C. vPC
- D. VSS

**Answer:** D

**Explanation:** [https://www.cisco.com/c/en/us/products/collateral/switches/catalyst-6500-virtual-switching-system-1440/prod\\_q](https://www.cisco.com/c/en/us/products/collateral/switches/catalyst-6500-virtual-switching-system-1440/prod_q)

#### NEW QUESTION 396

A network engineer has finished designing and implementing a new network. What two protocols would they use to gain insight into the network and determine the components that require optimization? (Choose two.)

- A. CDP
- B. NetFlow
- C. ICMP Echo
- D. NMAP
- E. SNMP

**Answer:** BE

#### NEW QUESTION 398

Which three Cisco technologies can you use to detect and mitigate threats? (Choose three.)

- A. NetFlow
- B. FWSM
- C. ISE
- D. VRRP
- E. sFLOW

**Answer:** ABC

#### NEW QUESTION 400

Why would an engineer implement variable-length subnet masks?

- A. to make a subnet its own VLAN.
- B. to expand an existing subnet .
- C. to make a subnet public.
- D. to prevent wasting IP addresses

**Answer:** B

#### NEW QUESTION 405

Which option is a benefit of the modular approach to network design?

- A. higher availability
- B. repeatable scalability
- C. increased security
- D. improved resiliency

**Answer:** B

#### NEW QUESTION 406

Which two methods are used to reduce the mesh links required between iBGP peers in the same AS? (Choose two.)

- A. community
- B. route reflectors
- C. local preference
- D. confederations
- E. atomic aggregate

**Answer:** BD

#### NEW QUESTION 410

A data center is being deployed, and one design requirement is to be able to readily scale server virtualization. Which IETF standard technology can provide this requirement?

- A. Transparent Interconnection of Lots of Links
- B. Cisco FabricPath
- C. data center bridging
- D. Cisco Unified Fabric

**Answer:** A

#### NEW QUESTION 415

In which module do you place a VPN submodule when designing an enterprise network?

- A. service provider edge
- B. enterprise campus
- C. remote
- D. enterprise edge

**Answer:** C

#### NEW QUESTION 419

One step in characterizing an existing network involves obtaining information such as network performance, availability, utilization and response times. Which activity generates this information?

- A. logical network mapping
- B. network health check
- C. address and naming analysis
- D. wiring and media assessment

**Answer:** B

#### NEW QUESTION 421

Which scenario is the best example of a single-homed connected infrastructure?

- A. a data center that is connected to one service provider over an MPLS circuit and another service provicer over an Ethernet connection.
- B. a remote office that is connected to the WAN using a DSL provider and a cable provider.
- C. a small office that uses a DSL link to connect to the WAN.
- D. to corporate office that uses two separate routers to connect to two different service providers.

**Answer:** C

#### NEW QUESTION 422

Which Cisco security mechanism has the attributes listed below?

- it is a sensor appliance



- it searches for potential attacks by capturing and analyzing traffic
- it is a "purpose-built device"
- it is installed passively
- it introduces no delay or overhead

A. IKE  
B. PIX  
C. HIPS  
D. NIDS  
E. HMAC

**Answer:** D

#### NEW QUESTION 424

Which statement describes an advantage of the Layer 2 access model over the Layer 3 access model in the data center?

- A. It supports NIC teaming.  
B. It removes STP dependency.  
C. It increases scalability.  
D. It improves convergence time.

**Answer:** A

#### NEW QUESTION 426

What query should you make if you want to find all objects of a particular type in an MIT tree?

- A. mid-tree-level  
B. class-level  
C. object-level  
D. tree-level

**Answer:** B

**Explanation:** <https://www.cisco.com/c/en/us/solutions/collateral/data-center-virtualization/application-centric-infrastructure/w>

#### NEW QUESTION 429

An organization needs to implement isolated logical structure due to compliance regulations. What complex access control network virtualization method can it use?

- A. The IT organization creates a quarantine network for end points that do not meet the posture assessment requirements  
B. The IT organization creates a separate guest network for wireless and wired clients  
C. The IT organization acts as a client serving different, isolated departments

**Answer:** A

#### NEW QUESTION 432

Which application provides AAA service for cisco devices?

- A. TACACS  
B. RADIUS

**Answer:** A

#### NEW QUESTION 434

Between what two modules DMZ should be located? (Choose two)?

- A. Internet  
B. Building access  
C. Building distribution  
D. Corporate network

**Answer:** AD

#### NEW QUESTION 439

Which two states are RSTP port states? (Choose two.)

- A. discarding  
B. learning  
C. blocking  
D. listening  
E. disabled

**Answer:** AB

**NEW QUESTION 442**

Which statement describes the recommended deployment of DNS and DHCP servers in the Cisco Network Architecture for the Enterprise?

- A. Place the DHCP and DNS servers in the enterprise campus access layer and enterprise branch.
- B. Place the DHCP and DNS servers in the enterprise campus server farm layer and enterprise branch.
- C. Place the DHCP server in the enterprise campus core layer and remote access and VPN module, and place the DNS server in the Internet connectivity module.
- D. Place the DHCP server in the enterprise campus distribution layer, and place the DNS server in the Internet connectivity module.

**Answer:** B

**NEW QUESTION 445**

Which Layer in the Cisco Enterprise Archetecture model is highly available, has fast convergence, and should avoid packet manipulation?

- A. Campus distribution
- B. enterprise data center
- C. enterprise edge
- D. campus access
- E. campus core
- F. remote access VPN

**Answer:** E

**Explanation:** <http://www.ciscopress.com/articles/article.asp?p=1315434>

**NEW QUESTION 450**

A network engineer is tasked to upgrade and expand a large existing production network. From the IOS CLI, what two protocols can be used to build a topology map of the existing network? (Choose two.)

- A. SNMP
- B. IP SLA
- C. ICMP Echo
- D. LLDP
- E. Traceroute

**Answer:** DE

**NEW QUESTION 455**

Which technology allows remote networks to be connected via site-to-site tunnels?

- A. IPsec VPN
- B. AnyConnect VPN
- C. SSL VPN
- D. EasyConnect VPN

**Answer:** A

**NEW QUESTION 459**

With deterministic Wireless LAN Controller redundancy design, the different options available to the designer have their own strengths. Which statement is an example of such a strength?

- A. Dynamic load balancing, or salt-and-pepper access point design, avoids the potential impact of oversubscription on aggregate network performance.
- B. N+N redundancy configuration allows logically grouping access points on controllers to minimize intercontroller roaming events.
- C. N+N+1 redundancy configuration has the least impact to system management because all of the controllers are colocated in an NOC or data center.
- D. N+1 redundancy configuration uses Layer 3 intercontroller roaming, maintaining traffic on the same subnet for more efficiency.

**Answer:** B

**NEW QUESTION 460**

An engineer must design a new data center network and must reduce hardware costs while allowing for the benefits of a hierarchical network model. Which layer is combined with the distribution layer by a single device to accomplish this goal?

- A. campus
- B. access
- C. DMZ
- D. core

**Answer:** A

**NEW QUESTION 465**

An organization is redesigning a 3-tier hierarchical network into a collapsed core. What design issue is a primary concern per Cisco best practices?

- A. services delineation
- B. port density
- C. feature availability
- D. resource utilization

**Answer:** D

**NEW QUESTION 469**

Which three sources does a network designer use to collect information for characterizing an existing network? (Choose three.)

- A. staff input
- B. visual inventory
- C. network audit
- D. traffic analysis
- E. server statistics

**Answer:** ACD

**NEW QUESTION 474**

While designing a remote access VPN, a customer has requested three different levels of access to be granted for administrators, employees, and partners. Which three access policies must be configured for the three groups? (Choose Three)

- A. Partners are centrally authenticated with limited network access controlled with ACLs.
- B. Administrative users have local credentials with full access to the internal infrastructure.
- C. Administrative users are centrally authenticated with full access to the internal infrastructure.
- D. Employee are centrally authenticated with limited network access controlled with ACLs.
- E. Employees are centrally authenticated with full access to the internal infrastructure.
- F. Partners are centrally authenticated with full access to the internal infrastructure.

**Answer:** DEF

**NEW QUESTION 475**

What are two important aspects to consider when looking at backup circuit options for a branch location?

- A. local exchange carrier diversity
- B. type of dynamic routing protocol
- C. type of core switch
- D. backup MPLS connection
- E. Internet service provider diversity

**Answer:** BE

**NEW QUESTION 480**

An enterprise campus module is typically made up of four submodules, as described by the Cisco Enterprise Architecture Model. Which two submodules are part of this module? (Choose two.)

- A. DMZ
- B. enterprise branch
- C. building distribution
- D. server farm/data center
- E. MAN

**Answer:** CD

**NEW QUESTION 485**

Which option is an example of physical device virtualization?

- A. VSS
- B. VPN
- C. VRF
- D. VLAN

**Answer:** A

**NEW QUESTION 487**

Which value must you configure on a Microsoft DHCP server so that Cisco wireless Aps can locate the wireless controllers?

- A. the length value
- B. the IP DHCP pool name
- C. a vendor class identifier
- D. the Type suboption code Oxe1

**Answer:** B

**NEW QUESTION 489**

You design a network with the following network addresses:

- 192.168.168.0
- 192.168.169.0
- 192.168.170.0
- 192.168.171.0

192.168.172.0  
192.168.173.0  
192.168.174.0  
192.168.175.0

Which route address is the best summary of these network addresses?

- A. 192.168.0.0/24
- B. 192.168.171.128/3
- C. 192.168.168.0/21
- D. 192.168.175.0/3
- E. 192.168.0.0/16

**Answer: C**

#### NEW QUESTION 491

What Cisco product is designed to improve the performance of Windows file and exchange services in remote data centers?

- A. Application Control Engine
- B. Wide Area Application Services
- C. Cisco Application Policy Infrastructure Controller
- D. Cisco Prime Network Services Controller

**Answer: B**

#### NEW QUESTION 494

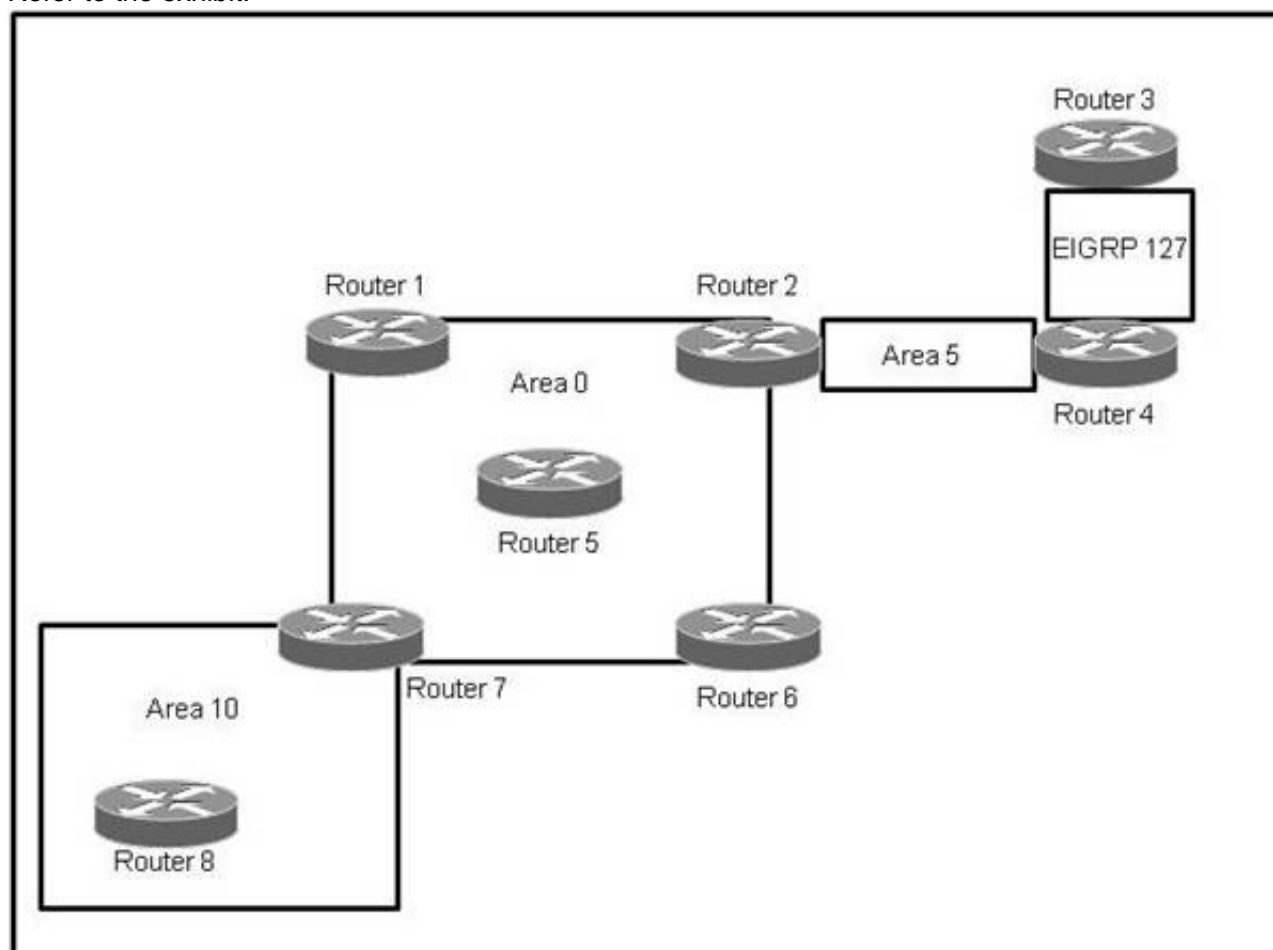
A remote worker for a sales company must submit daily updates via the company email system. The employee does not have a company-issued laptop, so which VPN method is used for connectivity to the company email server?

- A. SSL VPN
- B. GETVPN
- C. L3VPN
- D. DMVPN

**Answer: A**

#### NEW QUESTION 496

Refer to the exhibit.



Which three OSPF routers are the only routers that may perform summarization with the current network layout? (Choose three.)

- A. Router 2
- B. Router 3
- C. Router 4
- D. Router 5
- E. Router 7
- F. Router 8

**Answer: ACE**

#### NEW QUESTION 499

What are two purposes of route redundancy? (Choose two.)

- A. minimize the effect of link failures
- B. minimize the effect of internetworking device failures
- C. minimize the convergence time of STP
- D. load balance across redundant paths
- E. save network costs

**Answer:** AB

**NEW QUESTION 500**

Which option is an advantage of a Layer 3 access model over the traditional Layer 2 access model ?

- A. increased neighbor adjacencies
- B. faster convergence
- C. reduced resources on the router
- D. reduced size of routing table

**Answer:** B

**NEW QUESTION 503**

A consultant at Company XYZ connects to the Guest wireless network but cannot reach the MGMT VLAN to complete an audit . Other users can connect to the MGMT VLAN without any issues. Why is the consultant unable to access the MGMT VLAN ?

- A. The AP is offline
- B. The access is not permitted
- C. The MGMT VLAN is down
- D. The WLC is offline

**Answer:** B

**NEW QUESTION 507**

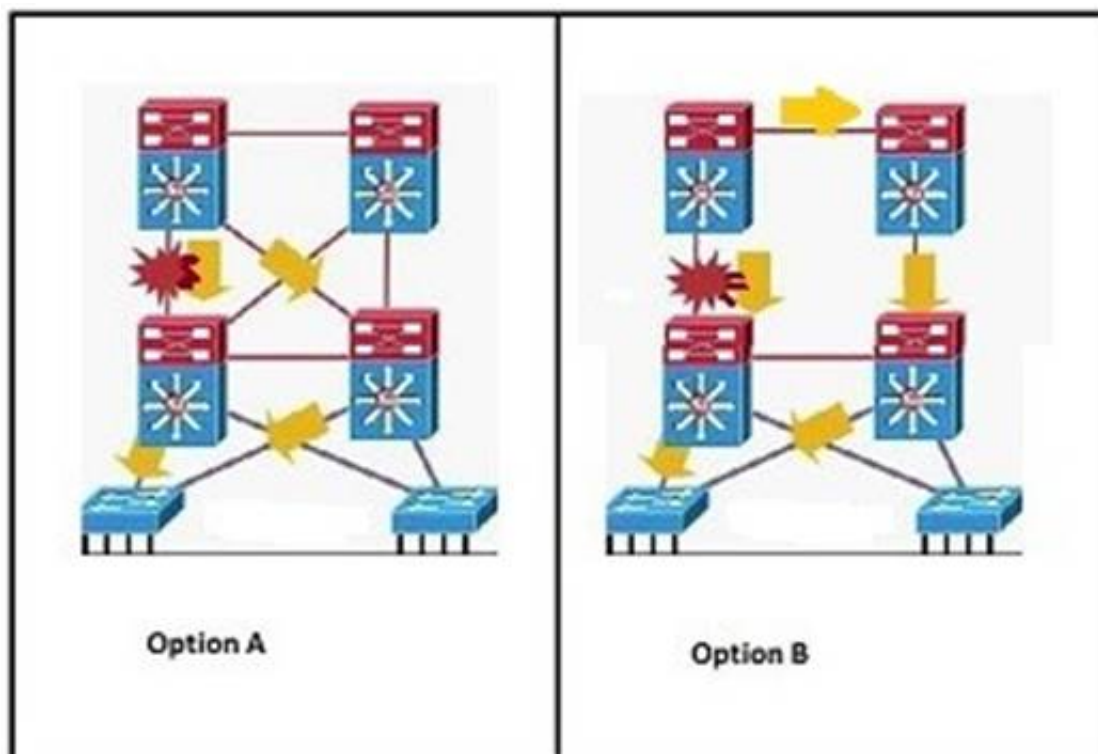
What is the key limitation of using Internet circuits as a backup to a private enterprise WAN?

- A. circuit bandwidth
- B. prioritization
- C. security
- D. operational expense

**Answer:** B

**NEW QUESTION 510**

Refer to the exhibit.



You are designing routing between building distribution switches and campus core switches. Assuming that all links have the same speed, which statement about these designs is true?

- A. Option A has more fault tolerance but slower convergence than Option B.
- B. Option A has more fault tolerance and faster convergence than Option B.
- C. Option B has more fault tolerance but slower convergence than Option A.
- D. Option B has more fault tolerance and faster convergence than Option A.

**Answer:** B

**NEW QUESTION 511**

In Cisco ACI, which option is the unified point of automation , management , monitoring and programmable?

- A. Python



- B. REST
- C. APIC
- D. Postman

**Answer:** C

#### NEW QUESTION 516

Which option is an advanced congestion management mechanism?

- A. weighted fair queuing
- B. policing
- C. payload compression
- D. header compression

**Answer:** A

#### NEW QUESTION 520

Which two can be used as a branch office WAN solution? (Choose two.)

- A. frame relay
- B. MPLS
- C. Metro Ethernet
- D. GPRS
- E. dial-up modem
- F. 3G USB modems

**Answer:** BC

**Explanation:** Frame relay is old 'shared' technology today's sites use some flavor of Metro E or MPLS/VPN

#### NEW QUESTION 525

Which three QoS levels should VoIP clients be set to on a Cisco WLC? (Choose three.)

- A. Platinum
- B. Bronze
- C. Gold
- D. Silver
- E. Premier
- F. Critical

**Answer:** ACD

#### NEW QUESTION 527

Which protocol is best when there are circuit connections with two different ISPs in a multihoming scenario?

- A. SSL
- B. IPsec
- C. BGP
- D. VRRP

**Answer:** C

#### NEW QUESTION 530

Which two characteristics are advantages of the top-down approach to network design? (Choose two)

- A. Generally is the fastest approach
- B. The resulting design is optimized for the business requirements of the organization.
- C. The designer can delay testing until the end of the project
- D. The resulting design can meet both current and future requirements
- E. Does not require a thorough initial need analysis

**Answer:** BE

#### NEW QUESTION 535

Your company uses OSPF for internal routing. The company will be connected to VendorA via a single dedicated link and to VendorB via redundant dedicated links. Both vendors also use OSPF for internal routing.

Which of the following deployments describes the best intra-domain routing practice in this situation?

- A. Connect your company to both VendorA and VendorB using existing OSPF.
- B. Redistribute the routes on each link between your company and the vendors to a shared EIGRP routing protocol.
- C. Use IBGP to reach VendorA and EBGP to reach VendorB.
- D. Use static routes to reach VendorA and EBGP to reach VendorB.
- E. Use static routes to reach both VendorA and VendorB.

**Answer:** D

**NEW QUESTION 538**

When considering the three VoIP design models - single site, centralized multisite, and distributed multisite - which question below would help to eliminate one of the options?

- A. Will the switches be required to provide inline power?
- B. Will users need to make offsite calls, beyond the enterprise?
- C. Will users require applications such as voice mail and interactive voice response?
- D. Are there users whose only enterprise access is via a QoS-enabled WAN?

**Answer:** D

**NEW QUESTION 542**

What are two advantages of a modular design (Choose two)?

- A. Increased scalability
- B. Security can be implemented at every module
- C. Increased redundancy as you can add modules
- D. Hierarchy included in design

**Answer:** AD

**Explanation:** <http://www.ciscopress.com/articles/article.asp?p=1073230&seqNum=2> <https://thwack.solarwinds.com/docs/DOC-175763>

**NEW QUESTION 543**

Which feature must be configured on a switch port that connects to a Cisco Wireless Access Point when QoS is required?

- A. Portfast
- B. Cisco Discovery Protocol
- C. Dot1q Trunk
- D. Auto Negotiation

**Answer:** C

**NEW QUESTION 544**

Which tow network services should you host on the DMZ ? (Choose two)

- A. NFS
- B. WWW
- C. TACACS+
- D. DHCP
- E. FTP

**Answer:** AE

**NEW QUESTION 546**

High availability is required for a critical remote office of an enterprise. The office has already deployed two redundant WAN connections. Which action can be done to the edge router to improve the availability of the remote office?

- A. Replace the fiber uplinks with copper
- B. Use module line cards
- C. Add dual power suppliers
- D. Upgrade the uplinks from 100MB to 1G.

**Answer:** B

**NEW QUESTION 550**

When designing the identity and access control portions for the enterprise campus network, which of these solutions would be the most appropriate solution to consider?

- A. 802.1X
- B. ACLs in the core layer
- C. Cisco Security MARS
- D. NetFlow

**Answer:** A

**Explanation:**

Field	Description
Bytes	Number of bytes of memory that are used by the NetFlow cache
Active	Number of active flows
Inactive	Number of flow buffers that are allocated in the Netflow cache
Added	Number of flows that have been created since the start of the summary
Exporting flows	IP address and UDP port number of the workstation to which flows are exported
Flows exported	Total number of flows export and the total number of UDP datagrams
Protocol	IP protocol and well-known port number
Total Flows	Number of flows for this protocol since the last time that statistics were cleared
Flows/sec	Average number of flows this protocol per second
Packets/flow	Average number of packets per flow per second
Bytes/pkt	Average number of bytes for this protocol
Packets/sec	Average number of packets for this protocol per second

#### NEW QUESTION 555

Which subnet is the best choice for a point-to-point link?

- A. 10.120.10.0/29
- B. 10.120.10.0/28
- C. 10.120.10.1/32
- D. 10.120.10.0/30

Answer: D

#### NEW QUESTION 556

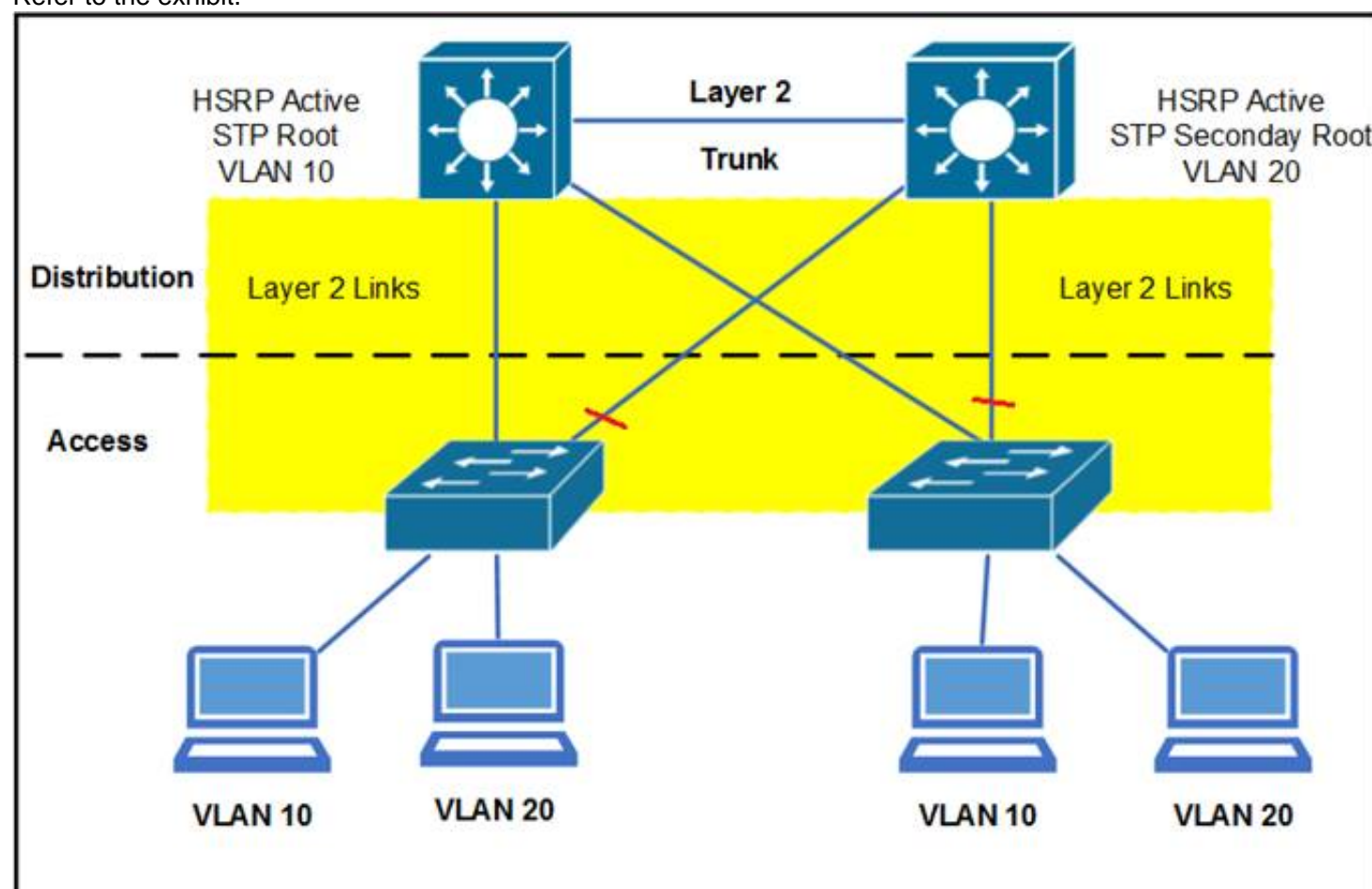
What two configurations are Cisco recommended best practices for user access interfaces? (Choose two.)

- A. VTP transparent mode
- B. BPDUguard
- C. Root Guard
- D. Portfast
- E. Trunk mode

Answer: BD

#### NEW QUESTION 557

Refer to the exhibit.



The red lines refer to STP blocked ports. What happens if the HSRP active moves to the right distribution, and the STP root remains on the left distribution?

- A. The STP root becomes the gateway.
- B. The interdistribution link is used for transit.

- C. The HSRP standby becomes the gateway.
- D. The interaccess link is used for transit.
- E. Host traffic is unable to reach the HSRP active.

**Answer:** B

#### NEW QUESTION 559

What is the maximum RIPv2 hop count for a reachable route?

- A. 13
- B. 14
- C. 15
- D. 16

**Answer:** C

#### NEW QUESTION 563

Which option is an advantage of the bottom-up design model?

- A. focuses on the needs of user communities
- B. includes a thorough analysis of customer requirements
- C. facilitates a quick response to client requests
- D. produces a "big-picture" of the desired outcome

**Answer:** C

#### NEW QUESTION 567

Which two Cisco products can be used in a data center to support OTV technology? (Choose two.)

- A. Cisco Nexus 5500 Series Switches
- B. Cisco Nexus 7000 Series Switches
- C. Cisco ASR 1000 Series Routers
- D. Cisco ASR 9000 Series Routers
- E. Cisco Nexus 3000 Series Switches

**Answer:** BC

#### NEW QUESTION 570

What will extend a trust boundary (there is switch interface configuration with separate voice VLAN and data VLAN configured where the phone is connected to, also small diagram showing endpoint (host), IP Phone, Access Switch, Distribution Switch, Core Switch and Data Centre Aggregation switch)?

- A. Multiple layers PC
- B. IP Phone
- C. Access Switch
- D. Distribution Switch
- E. Core Switch

**Answer:** B

#### NEW QUESTION 575

While designing the LAN core to distribution infrastructure for optimum convergence, the engineer decides to use a topology using triangles. Which benefit to the organization is true?

- A. It utilizes multiple links to route traffic to its destination.
- B. It allows device failures to occur without a recalculation of routes.
- C. It creates a topology that can grow with the organization.
- D. It allows for a smaller quantity of devices in the core.

**Answer:** A

#### NEW QUESTION 576

A remote user for a company must periodically connect to the company network to access internal resources using a company laptop with software that was preinstalled by the IT department. Which VPN method is used for connectivity?

- A. DMVPN
- B. SSL VPN
- C. IPsec VPN
- D. GET VPN

**Answer:** C

#### NEW QUESTION 580

A network engineer requires that an OSPF ASBR must only flood external LSAs only within its own area. What OSPF area type should be configured?

- A. Backbone Area

- B. Totally Stub Area
- C. Not So Stubby Area
- D. Stub Area

**Answer:** C

**NEW QUESTION 584**

When designing IP addressing schemes, which options are two benefits of implementing hierarchical addressing? (Choose two.)

- A. provides an optimized addressing plan
- B. provides real-time troubleshooting
- C. allows the use of overlapping addresses
- D. reduces routing table entries
- E. provides modular convergence

**Answer:** AD

**NEW QUESTION 588**

Which two routing protocols converge most quickly? (Choose two.)

- A. RIPv1
- B. RIPv2
- C. BGP
- D. OSPF
- E. EIGRP

**Answer:** DE

**NEW QUESTION 589**

which options characterizes normal traffic flow and performance (Choose two)?

- A. Bandwidth
- B. Utilization
- C. Availability
- D. Baseline

**Answer:** AB

**NEW QUESTION 594**

Which address is the broadcast address of subnet 120.20.78.8/30?

- A. 120.20.78.12
- B. 120.20.78.1
- C. 120.20.78.11
- D. 120.20.78.8

**Answer:** C

**NEW QUESTION 596**

Which statement is true about the Cisco NAC Appliance?

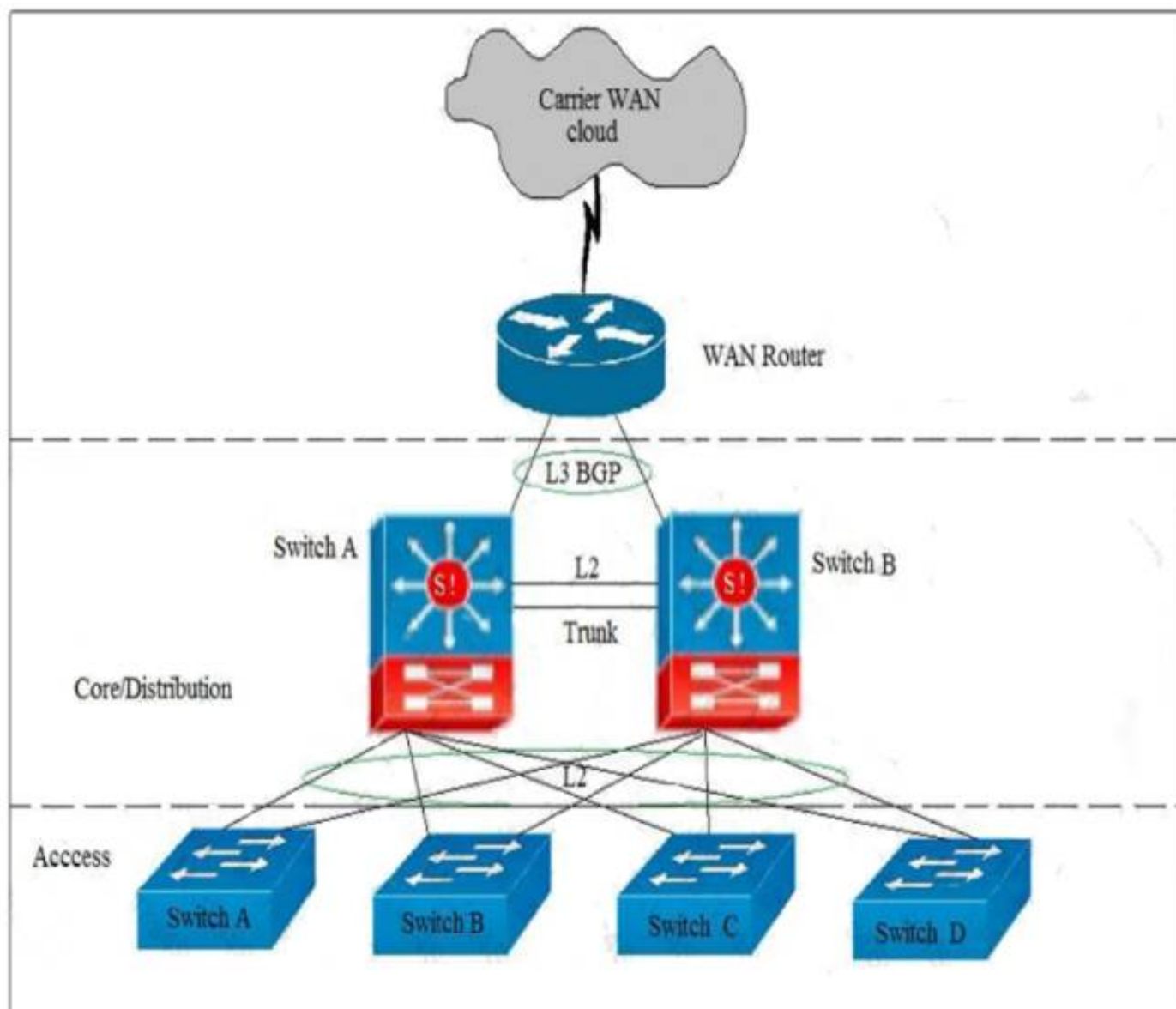
- A. recognizes users, their devices, and their roles in the network
- B. does not offer audit and reporting features
- C. must be placed inline with other network devices
- D. does not recognize guest users

**Answer:** A

**NEW QUESTION 601**

Refer to the exhibit.





Which action can be taken in this network design to make it more resilient?

- A. Add carrier redundancy
- B. Add additional Layer 2 trunks between core/distribution switches
- C. Add additional Layer 2 trunks between access switches
- D. Extend Layer 3 connectivity to access layer using dynamic routing protocol

**Answer:** A

#### NEW QUESTION 602

Which two statements about designing the Data Center Access layer are correct? (Choose two.)

- A. Multiport NIC servers should each have their own IP address.
- B. Layer 3 connectivity should never be used in the access layer.
- C. Layer 2 connectivity is primarily implemented in the access layer.
- D. Multiport NIC servers should never be used in the access layer.
- E. Layer 2 clustering implementation requires servers to be Layer 2 adjacent.

**Answer:** CE

#### NEW QUESTION 605

Which statement is true concerning the data center access layer design?

- A. The access layer in the data center is typically built at Layer 3, which allows for better sharing of services across multiple servers.
- B. With Layer 2 access, the default gateway for the servers can be configured at the access or aggregation layer.
- C. A dual-homing NIC requires a VLAN or trunk between the two access switches to support the dual IP addresses on the two server links to two separate switches.
- D. The access layer is normally not required, as dual homing is standard from the servers to the aggregation layer.

**Answer:** B

#### NEW QUESTION 609

What is the benefit of using VLSM?

- A. To save a wasting of IP Address
- B. To expand a subnet

**Answer:** A

#### NEW QUESTION 611

In the traditional hierarchical LAN design, which two statements about the distribution layer are true? (Choose Two)

- A. It uses Layer 2 switching only.
- B. It typically is connected directly to the internet
- C. it aggregates data from the access layer

- D. Policy is implemented at this layer
- E. It provides users direct access to the network.

**Answer:** CD

**Explanation:** <http://www.ciscopress.com/articles/article.asp?p=2202410&seqNum=4>

#### NEW QUESTION 615

Which WAN technology is a cost-effective method to deliver 100 Mb of bandwidth to multiple branch offices?

- A. DSL
- B. DWDM
- C. ISDN
- D. Metro Ethernet

**Answer:** D

#### NEW QUESTION 617

What is the benefit of VLSM?

- A. reduces configuration complexity by using the same subnet mask length
- B. reduces the routing table size by using automatic route summarization
- C. reduces the routing table size by using manual route summarization
- D. allows the subnet mask and classful routing updates to be advertised
- E. secures the hosts on a subnet by using RFC 1918 addresses

**Answer:** C

#### NEW QUESTION 618

What are two industry drivers that promote network virtualization? (Choose two.)

- A. device reduction
- B. application stability
- C. traffic isolation
- D. multi-vendor support
- E. reduced complexity

**Answer:** AE

#### NEW QUESTION 619

According to Cisco best practices, which traffic control should you apply to the strict priority queue?

- A. Bandwidth should be limited to one-third of the link capacity.
- B. Bandwidth should be limited to 768 kbps.
- C. Limits should be applied to non-real-time traffic and all real-time traffic should be permitted.
- D. The link serialization delay should be set to less than 100 ms.

**Answer:** A

#### NEW QUESTION 623

Which option can use deep-packet examination to determine the specific nature of an attack?

- A. network IPS
- B. NetFlow collector
- C. stateful firewall
- D. syslog server

**Answer:** A

#### NEW QUESTION 627

Which statement describes an advantage of the Layer 2 access model over the Layer 3 access model in the data center?

- A. It enables NIC teaming.
- B. It removes STP dependency.
- C. It increases scalability.
- D. It decreases convergence.

**Answer:** A

#### NEW QUESTION 632

Drag the term on the left to the matching deployment scenario on the right.

static NAT	translate a pool of addresses
dynamic NAT	translate from IPv4 to IPv6
NAT overload	translate addresses one-to-one
NAT-PT	translate using different ports

**Answer:**

**Explanation:**

static NAT	dynamic NAT
dynamic NAT	NAT-PT
NAT overload	static NAT
NAT-PT	NAT overload

#### NEW QUESTION 636

Which two are types of network virtualization? (Choose two.)

- A. VSS: Virtual Switching System
- B. VRF: virtual routing and forwarding
- C. VCI: virtual channel identifier
- D. VLSM: variable length subnet masking
- E. VM: virtual machine
- F. VMP: Virtual Memory Pool

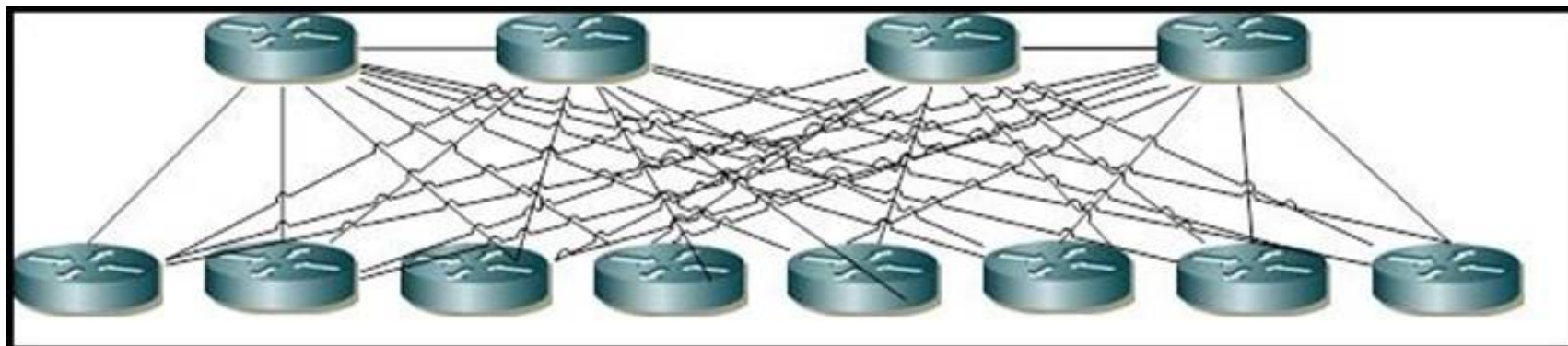
**Answer:** AB

**Explanation:** Network virtualization encompasses logical isolated network segments that share the same physical infrastructure. Each segment operates independently and is logically separate from the other segments. Each network segment appears with its own privacy, security, independent set of policies, QoS levels, and independent routing paths.

Here are some examples of network virtualization technologies: VLAN: Virtual local-area network  
VSAN: Virtual storage-area network VRF: Virtual routing and forwarding VPN: Virtual private network  
VPC: Virtual Port Channel

#### NEW QUESTION 637

Refer to the exhibit.



Assuming that a network will grow exponentially for the next 24 months, what is the main limitation that must be addressed?

- A. scalability
- B. serviceability
- C. redundancy
- D. resiliency

**Answer:** A

**NEW QUESTION 642**

A network engineer is using the traditional switched hierarchical design. The client has asked to increase uplink utilization from the access layer to the distribution. How can the engineer attain this new requirement without adding new physical connections?

- A. enable spanning-tree portfast
- B. enable VSS at the distribution layer
- C. increase the MTU size on the uplink interfaces
- D. ensure the root bridge priority is equal on both distribution switches

**Answer: B**

**NEW QUESTION 643**

Which option is used by OSPF to reduce the flooding domain of database updates in a network?

- A. hello packets
- B. virtual links
- C. interface cost
- D. areas

**Answer: D**

**NEW QUESTION 646**

.....

## Thank You for Trying Our Product

\* 100% Pass or Money Back

All our products come with a 90-day Money Back Guarantee.

\* One year free update

You can enjoy free update one year. 24x7 online support.

\* Trusted by Millions

We currently serve more than 30,000,000 customers.

\* Shop Securely

All transactions are protected by VeriSign!

**100% Pass Your 200-310 Exam with Our Prep Materials Via below:**

<https://www.certleader.com/200-310-dumps.html>