

200-310 Dumps

Designing for Cisco Internetwork Solutions

<https://www.certleader.com/200-310-dumps.html>



NEW QUESTION 1

Consider the reservation of IP Addressing what mask you will use in a point to point connection between two Buildings

- A. 255.255.252.0
- B. 255.255.255.252
- C. 255.255.255.254

Answer: C

NEW QUESTION 2

Which type of router connects to two different OSPF areas?

- A. area border
- B. autonomous system boundary
- C. backbone
- D. internal

Answer: A

Explanation: <https://www.cisco.com/c/en/us/support/docs/ip/open-shortest-path-first-ospf/13703-8.html>

NEW QUESTION 3

A small business owner has 200 staff members that occupy two floors of a building The owner wants to reduce the network infrastructure costs without losing too much network resiliency and scalability Which action meets these requirements?

- A. Combine access and core layers into one layer and keeping all other layers
- B. Combine access and distribution layers into one layer and keep all other layers
- C. Exclude access and distribution layer switches and connect everything to redundant core switches
- D. Combine core and distribution layers into one layer and keep all other layers.

Answer: A

NEW QUESTION 4

Which is part of the Prepare phase of PPDIOO?

- A. Obtain site contact information
- B. Perform network audit
- C. Identify customer requirements
- D. Perform gap analysis

Answer: C

Explanation:

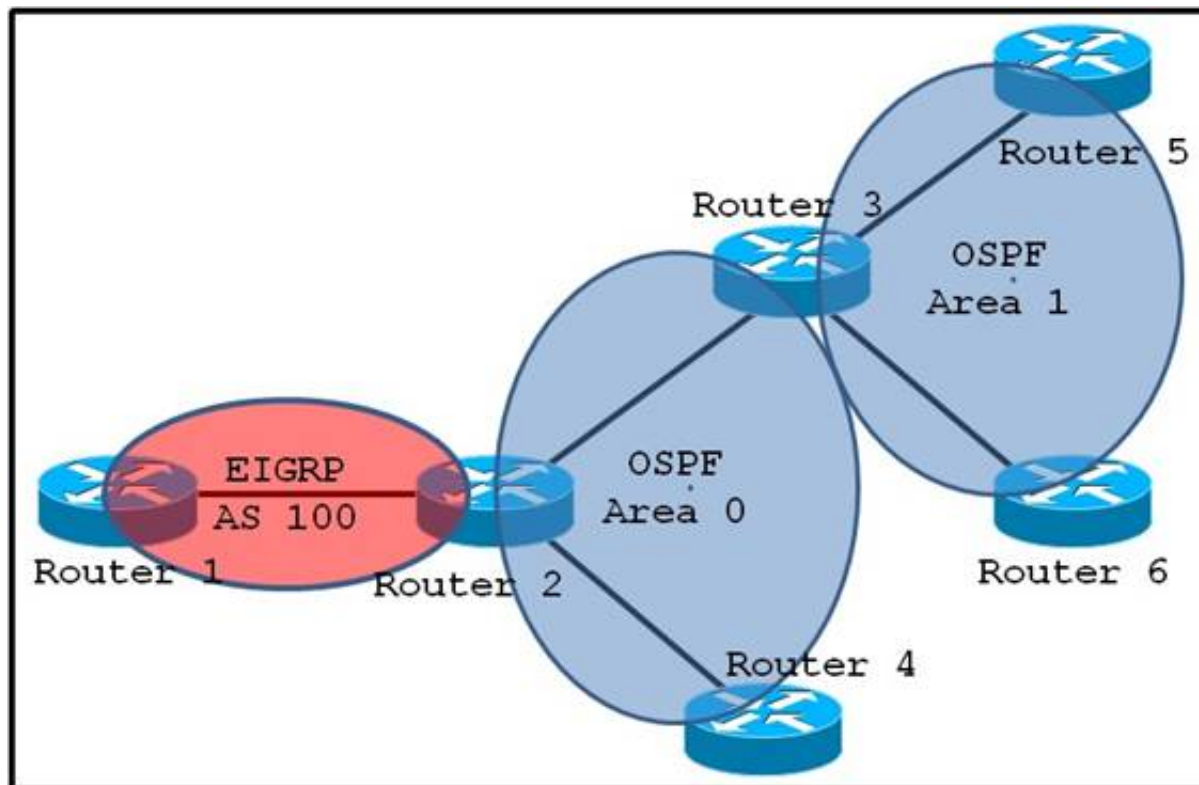
PPDIOO Phase	Description
Prepare	Establishes organization and business requirements, develops a network strategy, and proposes a high-level architecture
Plan	Identifies the network requirements by characterizing and assessing the network, performing a gap analysis
Design	Provides high availability, reliability, security, scalability, and performance
Implement	Installation and configuration of new equipment
Operate	Day-to-day network operations
Optimize	Proactive network management; modifications to the design

Prepare Phase

The Prepare phase establishes organization and business requirements, develops a network strategy, and proposes a high-level conceptual architecture to support the strategy. Technologies that support the architecture are identified. This phase creates a business case to establish a financial justification for a network strategy.

NEW QUESTION 5

Refer to the exhibit.



On which router should you configure redistribution?

- A. Router 1
- B. Router 2
- C. Router 3
- D. Router 4
- E. Router 5

Answer: B

NEW QUESTION 6

What virtualization technology is used to provide device virtualization on the Cisco Nexus 7000 series switch?

- A. VRF
- B. VDC
- C. vPC
- D. VSS

Answer: B

NEW QUESTION 7

A large company requests a hierarchical design model. What tier should be free of physically connected hosts?

- A. core
- B. access
- C. aggregation
- D. distribution

Answer: A

NEW QUESTION 8

What two factors should be considered when deploying an enterprise campus network? (Choose two.)

- A. employees
- B. geography
- C. applications
- D. administration
- E. throughput

Answer: BC

NEW QUESTION 9

What is the optimal device and location to fulfill these requirements?

- provide early indication of reconnaissance and scanning activities with blocking capabilities
- require fewer interfaces to inspect traffic to the DMZ and internal network

- A. IPS inline outside of the firewall
- B. IPS inline inside the firewall
- C. Cisco IOS IPS on the border router
- D. passive IPS connected to a SPAN port outside of the firewall
- E. passive IPS connected to a SPAN port inside the firewall

Answer: A

NEW QUESTION 10

Refer to the exhibit.

#	Enabled	Source Criteria:			Destination Criteria:		Service	Action	Hits	Logging
		Source	User	Security Group	Destination	Security Group				
Internal (4 incoming rules)										
1	<input checked="" type="checkbox"/>	any			any		http	Permit		
2	<input checked="" type="checkbox"/>	any			any		ftp	Permit		
3	<input checked="" type="checkbox"/>	any			any		domain	Permit		
4	<input checked="" type="checkbox"/>	any			any		bootps	Permit		

Which result is true if a client computer connects through the interface named Internal and attempts to connect to an operational tcp/443 based website?

- A. A captive portal is displayed which enables guest access layer.
- B. The traffic passes while alerting the logging system with the Emergencies event level.
- C. The traffic passes and displays the website content.
- D. The website connection times out

Answer: A

NEW QUESTION 10

Which IETF standard technology can be used with data center design to readily scale server virtualization?

- A. Transparent Interconnection of Lots of Links
- B. OTV
- C. vPC
- D. FCoE

Answer: A

NEW QUESTION 11

What tool would you use to capture, segregate and analyse IP traffic?

- A. Protocol Analyser
- B. NetFlow

Answer: B

NEW QUESTION 14

A network engineer must collect application-level information passing through a router. What two tools can provide this information? (Choose two.)

- A. NBAR
- B. CiscoWorks
- C. SNMP collector
- D. NetFlow collector
- E. Syslog

Answer: AD

NEW QUESTION 17

A network engineer needs to create a controller-based, high-density RF design. Which two factors determine the cell size? (Choose two.)

- A. antenna type
- B. ClientLink support
- C. TPC threshold setting
- D. QoS setting
- E. free space path loss

Answer: AC

NEW QUESTION 19

Drag the security term on the left to the matching description on the right.

ACL	an access control method that is used to forward traffic that is generated from public networks to a specified segment of the corporate network
NAT	includes IOS features that perform network protocol conformance validations
DMZ	performs packet filtering to restrict access on which traffic types are forwarded through the corporate network
firewall	a security option that is used to hide an internal network address before packets are forwarded to another network

Answer:

Explanation:

ACL	DMZ
NAT	firewall
DMZ	ACL
firewall	NAT

NEW QUESTION 23

What kind of servers you should place in DMZ?

- A. WWW
- B. FTP
- C. DHCP
- D. TACACS+
- E. NFP

Answer: AB

NEW QUESTION 25

Which option can hinder efficient IP address allocation?

- A. VLSM
- B. classless routing protocols
- C. routing auto-summary
- D. classful routing protocols

Answer: D

NEW QUESTION 28

What occurs to traffic when a Cisco APIC is removed from the data path of a Cisco ACI?

- A. The fabric continues to forward the traffic.
- B. The traffic is lost during convergence
- C. The traffic is queued during convergence
- D. The fabric reroutes the traffic to another APIC

Answer: A

NEW QUESTION 32

Which technology can help prevent attacks from the Internet against a corporate network?

- A. Cisco AnyConnect Secure Mobility Client
- B. Metro Ethernet
- C. Cisco IDS
- D. Cisco IPS

Answer: D

NEW QUESTION 34

What is a benefit of deploying Cisco IPS devices in inline mode?

- A. faster network convergence
- B. decreased network latency
- C. improved service availability
- D. timely threat detection

Answer: C

NEW QUESTION 37

Which network element must be summarized in a multiarea OSPF deployment?

- A. IP address
- B. number of routes
- C. communities
- D. link state advertisements

Answer: A

NEW QUESTION 39

In which two modes can you deploy Cisco IPS appliances? (Choose two.)

- A. inline
- B. promiscuous
- C. VTP group
- D. threat mitigation
- E. threat detection

Answer: AB

NEW QUESTION 41

Which Cisco technology can connect more than two switches so that they behave as on switch?

- A. Ether Channel
- B. Stack Wise
- C. VSS
- D. routing

Answer: B

NEW QUESTION 43

Which item is the fundamental basis of a virtual network?

- A. a VRF instance
- B. a MIB database
- C. a GRE tunnel
- D. redundant hardware

Answer: A

NEW QUESTION 47

While preparing an overview of Internet facing DMZ for a customer, a consultant must identify the functionality to be placed in the DMZ. Which two functionalities are best suited for use in a DMZ? (Choose two.)

- A. enterprise NTP source
- B. DDOS protection
- C. remote access VPN termination
- D. web load balancer
- E. web security appliance

Answer: DE

NEW QUESTION 48

Which subnet mask should you use on point-to-point links to avoid wasting IP addresses?

- A. 255.255.255.252
- B. 255.255.255.250

- C. 255.255.255.0
- D. 255.255.255.248

Answer: A

NEW QUESTION 52

A network engineer is designing a solution that will monitor IP traffic through corporate routers with the ability to export the flows to a collection engine without using network probes. What technology meets this requirement?

- A. RMON
- B. NetFlow
- C. SNMP
- D. Syslog
- E. IP SLA

Answer: B

NEW QUESTION 56

Which first-hop redundancy protocol dynamically distributes traffic across multiple gateways?

- A. HSRP
- B. GLBP
- C. VRRP
- D. IBGP

Answer: B

NEW QUESTION 60

What tool would you use to decode protocols?

- A. Protocol Analyser
- B. NetFlow
- C. Spectrum Analyser

Answer: A

NEW QUESTION 61

Which two connector actions are important when designing the core layer?

- A. port security
- B. PoE
- C. Access list requirements
- D. low latency
- E. redundancy

Answer: DE

NEW QUESTION 66

Which Cisco tool can prevent attacks from malware, viruses, and other malicious traffic?

- A. Cisco ISE
- B. Cisco IPS
- C. Cisco Secure ACS
- D. Cisco IDS

Answer: B

NEW QUESTION 68

Which tool captures network traffic, decodes the protocols in the captured packets, and provides statistics to characterize errors, and response time?

- A. continuity tester
- B. protocol analyzer
- C. spectrum analyzer
- D. bit error rate tester

Answer: B

Explanation: Protocol analyzer is a tool that captures network traffic, decodes the protocols in the captured packets, and provides statistics to characterize load, errors, and response time

NEW QUESTION 70

Which option is a benefit of Cisco Discovery Protocol?

- A. provides information about directly connected Cisco devices

- B. provides greater detail about collected data, including time stamping
- C. combines with the network layer data that is gathered by NetFlow when using a NetFlow collector
- D. part of the IEEE 802.1ab standard

Answer: A

NEW QUESTION 71

Which statement about using STP in a redundant – link scenario is true?

- A. It provides the most efficient use to redundant links.
- B. it uses only one redundant link at any one time.
- C. it bonds the two links and treats them as one link.
- D. it balances traffic by transmitting packets on alternating links.

Answer: D

NEW QUESTION 74

Which two techniques can you use to reduce the size of a network routing table?

- A. implement VPN
- B. route summarization
- C. implement NAT
- D. configure static routing
- E. utilizing a default route

Answer: BE

NEW QUESTION 75

Which two issues are typical challenges to network stability and reliability? (Choose two.)

- A. hardware failures
- B. layer 1 link failures
- C. application failures
- D. core layer failures
- E. distribution layer failures

Answer: AB

NEW QUESTION 77

A network engineer requires that an OSPF ASBR must only flood external LSAs only within its own area. What OSPF area type should be configured?

- A. Backbone Area
- B. Totally Stub Area
- C. Not So Stubby Area
- D. Stub Area

Answer: C

NEW QUESTION 81

A customer is questioning the additional infrastructure that is needed to design a three-tiered, hierarchical network. Which feature is a benefit of the distribution layer in a traditional design?

- A. creates access layer resiliency
- B. isolation of faults between the access and core layers
- C. extends the Layer 2 and Layer 3 boundary to the core layer
- D. provides additional security services against unauthorized access

Answer: B

NEW QUESTION 86

What three primary sources of information are needed to perform a network audit? (Choose three.)

- A. existing documentation
- B. new documentation
- C. existing network management software
- D. new network management tools
- E. management personnel
- F. technical personnel

Answer: ACD

NEW QUESTION 89

What are the three modes of unicast reverse path forwarding? (Choose three.)

- A. strict

- B. loose
- C. VRF
- D. global
- E. PIM
- F. local

Answer: ABC

NEW QUESTION 90

An organization is deciding what routing protocol to use throughout their network. What must be considered if routing is to be performed at the access layer?

- A. reduced scalability of the network when introducing a large number of switch blocks into the routing table
- B. centralized management of access control lists at the distribution layer
- C. reliability when implementing routing over spanning-tree at the access layer
- D. performance differences between core, distribution and access layer equipment

Answer: D

NEW QUESTION 94

Which network size can provide six /25 subnets while wasting the smallest number of IP addresses?

- A. 19
- B. 16
- C. 22
- D. 23

Answer: D

NEW QUESTION 95

In which phase of the Cisco Design Lifecycle would you identify shortfalls in the network operation team's ability to support new technologies being introduced?

- A. In the Deployment stage of the Build phase.
- B. In the Assessment stage of the Plan phase
- C. In the Optimize stage of the Manage phase
- D. In the Validation stage of the Build phase.

Answer: B

NEW QUESTION 98

An organization needs a WAN Transport technology that meets these criteria:

- has a low initial cost
- provides low-to-medium BW
- has medium-to-high latency and jitter

Which technology should the organization use?

- A. DSL
- B. X.25
- C. ISDN
- D. wireless
- E. analog modem

Answer: A

NEW QUESTION 101

In which two places is redundancy recommended in an enterprise campus network design? (Choose two.)

- A. building distribution
- B. campus core
- C. building access
- D. e-commerce
- E. Internet connectivity

Answer: AB

NEW QUESTION 102

What type of topology supports WAN redundancy when a balance is required between cost, high availability, and performance?

- A. partial meshed
- B. full meshed
- C. star
- D. ring
- E. hub-and-spoke
- F. bus
- G. point-to-point

Answer: A

NEW QUESTION 105

Where in the network hierarchy should network access control be performed?

- A. backbone
- B. core
- C. access
- D. distribution

Answer: C

NEW QUESTION 110

A customer is using a “guest” VLAN at a remote site to provide access for onsite guests or visitors to access the Internet, while prohibiting them from accessing internal sites. Which network technology isolates guest traffic while utilizing the existing corporate network?

- A. vPC
- B. frame relay
- C. DMVPN
- D. GRE tunnel

Answer: D

NEW QUESTION 112

Based on best practices which QoS profile should be configured on the WLAN of the WLC for wireless VoIP communications?

- A. Platinum
- B. Bronze
- C. Silver
- D. Gold

Answer: A

NEW QUESTION 114

Which two benefits are realized by establishing virtualization in a campus network? (Choose Two)

- A. enables path isolation
- B. enhances network agility
- C. consolidates applications
- D. enables unlimited scalability
- E. reduces network bandwidth

Answer: BD

Explanation: https://www.cisco.com/c/en/us/solutions/collateral/enterprise-networks/network-virtualization-solutions/net_bro

NEW QUESTION 116

Which design is the recommended geometric design for routed topologies?

- A. linear
- B. triangular
- C. rectangular
- D. circular

Answer: B

NEW QUESTION 118

Which two considerations are important when designing the access layer? (Choose two)

- A. routing between VLANs
- B. HSRP implementation
- C. load balancing
- D. QoS services
- E. port security

Answer: DE

NEW QUESTION 120

Which two options can be virtual networking devices? (Choose two.)

- A. ESX host
- B. VM
- C. switches
- D. routers
- E. Hyper-V host

Answer: CD

NEW QUESTION 124

According to fundamental design principles, which location is best for implementing Cisco QoS policies?

- A. hardware
- B. software
- C. Cisco 3900 Series Integrated Services Routers running IOS software
- D. WAN routers running IOS software

Answer: A

NEW QUESTION 126

What statement about EVN is true?

- A. Support RIP
- B. Support OSPFV3
- C. Required LDP
- D. Support as many as 32 virtual networks per device

Answer: D

Explanation: <http://www.cisco.com/c/en/us/td/docs/ios-xml/ios/evn/configuration/xs-3s/evn-xe-3s-book/evn-overview.html>

NEW QUESTION 130

Which three series of Cisco wireless controllers support wireless Bidirectional Rate Limiting? (Choose three.)

- A. Cisco 2500 Series Wireless Controllers
- B. Cisco 5500 Series Wireless Controllers
- C. Cisco 5700 Series Wireless Controllers
- D. Cisco 7500 Series Wireless Controllers
- E. Cisco 8500 Series Wireless Controllers
- F. Cisco 7200 Series Wireless Controllers

Answer: BDE

NEW QUESTION 133

Drag the spanning-tree protocol on the left to the recommended deployment environment on the right.

PVST	data center environments in which switching nodes are a mixture of IOS and Cisco NX-OS and minor tuning is needed
Rapid PVST	hybrid environments with several vendors and necessary interoperability
MST	environments in which all switching nodes are based on IOS and no tuning to spanning tree is needed

Answer:

Explanation:

PVST	Rapid PVST
Rapid PVST	PVST
MST	MST

NEW QUESTION 137

Which two options are benefits of using a modular network architecture? (Choose two.)

- A. facilitates troubleshooting
- B. accurate monitoring
- C. consistent documentation
- D. increased flexibility
- E. reduced cabling requirements

Answer: AD

NEW QUESTION 139

Which DHCP option do you need to configure to ensure that an LWAP can communicate with the Cisco WLC in a different subnet?

- A. 7
- B. 19
- C. 43
- D. 150

Answer: C

NEW QUESTION 140

Which benefit is an advantage of route summarization?

- A. It reduces the size of the routing table.
- B. It causes routes to be updated more frequently.
- C. It lowers the cost metric.
- D. It enables neighbor discovery.

Answer: A

NEW QUESTION 141

Which two options are benefits of utilizing the Cisco Lifecycle approach when designing enterprise networks? (Choose two.)

- A. identifies power consumption costs
- B. increases business agility
- C. allows extended access to business partners
- D. increases network ownership
- E. improves network availability

Answer: BE

NEW QUESTION 145

What design feature should be considered when accessing resources from a remote data center over a WAN connection?

- A. security
- B. bandwidth
- C. reliability
- D. management

Answer: B

NEW QUESTION 146

What are three valid methods of gathering information about an existing data network? (Choose three.)

- A. Use organizational input.
- B. Perform a traffic analysis.
- C. Analyze the user-mapping of a running application.
- D. Perform a packet-level audit to verify carrier service guarantees.
- E. Perform a network audit to gather more detail about the network.
- F. Use reports that analyze the metrics of the customer's existing network.

Answer: ABE

NEW QUESTION 149

An engineer is designing a network that is divided into multiple areas and supports a mixed vendor routing environment. Which interior gateway protocol must be selected?

- A. EIGRP
- B. OSPF
- C. BGP
- D. RIPv2

Answer: A

Explanation: <https://www.cisco.com/c/en/us/products/collateral/switches/catalyst-6800-series-switches/guide-c07-733457.htm>

NEW QUESTION 150

A network engineer is tasked with summarizing the routes to a remote site. What is the optimal route statement to connect to the 192.168.101.0/24 and 192.168.102.0/24 networks across the corporate WAN?

- A. ip route 192.168.100.0 255.255.254.0 10.1.1.1
- B. ip route 192.168.100.0 255.255.252.0 10.1.1.1
- C. ip route 192.168.100.0 255.255.255.0 10.1.1.1
- D. ip route 192.168.101.0 255.255.254.0 10.1.1.1

Answer: B

NEW QUESTION 155

Which type of WAN connection do you use for a low-latency application that is only available across a WAN?

- A. IPsec over the Internet
- B. MPLS VPN
- C. dialup
- D. unencrypted GRE over the Internet

Answer: B

NEW QUESTION 158

Which command is correct for creating a virtual interface on a Cisco wireless controller?

- A. config create interface
- B. tag interface
- C. config interface address
- D. untag interface

Answer: C

NEW QUESTION 161

What are two important aspects to consider when looking at backup circuit options for a branch location? (Choose two)

- A. local exchange carrier diversity
- B. type of dynamic routing protocol
- C. type of core switch
- D. backup MPLS connection
- E. Internet service provider diversity

Answer: BE

NEW QUESTION 164

What design requirement is necessary for campus network access layer switching?

- A. high cost per port
- B. high availability
- C. high scalability
- D. high performance

Answer: C

NEW QUESTION 165

How many switches can be combined into a single network element using VSS?

- A. 4
- B. 6
- C. 8
- D. 2

Answer: D

NEW QUESTION 167

Which two processes are included in the Build phase of the Cisco Design Lifecycle? (Choose two)

- A. Assessment
- B. Analysis
- C. Design
- D. Validation
- E. Deployment

Answer: DE

NEW QUESTION 170

Which network layer is the best fit for security features such as DAI and DHCP snooping?

- A. campus core
- B. enterprise edge
- C. campus distribution
- D. remote-access VPN
- E. enterprise data center
- F. campus access

Answer: F

NEW QUESTION 172

Which STP feature allows an access port to bypass the learning and listening states?

- A. Root Guard
- B. PortFast
- C. Loop Guard
- D. BPDU Guard

Answer: B

NEW QUESTION 173

Which Cisco device management feature is most suited to metering network traffic and providing data for billing network usage?

- A. BGP
- B. Cisco Discovery Protocol
- C. QoS
- D. RMON
- E. NetFlow

Answer: E

NEW QUESTION 175

Which type of area should you use in an enterprise OSPF deployment if you want to prevent propagation of type 5 LSAs but still allow the redistribution of external routes?

- A. stub
- B. totally stubby
- C. backbone
- D. NSSA
- E. virtual link

Answer: D

NEW QUESTION 180

What are two benefits of the bottom-up design approach? (Choose two.)

- A. allows a quick response to a design request
- B. facilitates design that is based on previous experience
- C. requires little or no notation of actual organizational requirements for implementation
- D. incorporates organizational requirements
- E. provides a broader overview to the organization and the designer

Answer: AB

NEW QUESTION 184

From which DNS record can a Cisco wireless AP, running Cisco WLC version 6.0 or later, retrieve bootstrap information?

- A. cisco-capwap-controller
- B. the DNS A record of the controller hostname
- C. the DHCP Option 43 name
- D. cisco-lwapp-controller

Answer: A

NEW QUESTION 185

which QoS level should VOIPset be configured on WLC ?

- A. Platinum
- B. Gold
- C. Premier
- D. Critical

Answer: A

NEW QUESTION 187

What phase of Cisco's PPDIOO is the final test of the appropriateness of the design?

- A. Operate
- B. Optimize
- C. Design
- D. Implement

Answer: A

NEW QUESTION 192

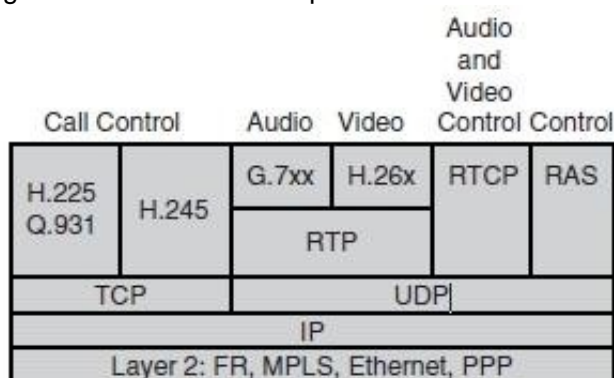
Which protocol is used for voice bearer traffic?

- A. MGCP
- B. RTP
- C. SCCP
- D. CDP
- E. ICMP

Answer: B

Explanation: VoIP Control and Transport Protocols

A number of different protocols are used in a VoIP environment for call control, device provisioning, and addressing. Figure 14-15 shows those protocols focused on VoIP control and transport.



NEW QUESTION 197

Which protocol is used to reserve bandwidth for the transport of a particular application data flow across the network?

- A. cRTP
- B. IEEE 802.1P
- C. RSVP
- D. LFI
- E. Auto QOS

Answer: C

Explanation: RSVP Signaling protocol that enables end stations or applications to obtain guaranteed bandwidth and low delays for their data flows.

NEW QUESTION 202

In which phase of PPDIOO are the network requirements identified?

- A. Design
- B. Plan
- C. Prepare
- D. Implement
- E. Operate
- F. Optimize

Answer: B

Explanation:

PPDIOO Phase	Description
Prepare	Establishes organization and business requirements, develops a network strategy, and proposes a high-level architecture
Plan	Identifies the network requirements by characterizing and assessing the network, performing a gap analysis
Design	Provides high availability, reliability, security, scalability, and performance
Implement	Installation and configuration of new equipment
Operate	Day-to-day network operations
Optimize	Proactive network management; modifications to the design

Plan Phase

The Plan phase identifies the network requirements based on goals, facilities, and user needs. This phase characterizes sites and assesses the network, performs a gap analysis against best-practice architectures, and looks at the operational environment. A project plan is developed to manage the tasks, responsible parties, milestones, and resources to do the design and implementation. The project plan aligns with the scope, cost, and resource parameters established with the original business requirements. This project plan is followed (and updated) during all phases of the cycle.

NEW QUESTION 204

When integrating services with Cisco ACI Service Graphs, which tool can be used for integrated Configuration management?

- A. IOS
- B. REST API
- C. APIC CLI
- D. HTML

Answer: B

Explanation: Integrated configuration management using the APIC GUI, REST API or Python scripts, all based on a consistent ACI object model
https://www.cisco.com/c/en/us/td/docs/switches/datacenter/aci/apic/sw/1-x/Operating_ACI/guide/b_Cisco_Oper

NEW QUESTION 207

A dynamically routed private line and a statically routed IPsec tunnel connect two offices. What routing configuration prefers the IPsec tunnel only in the event of a private line failure?

- A. floating static entry
- B. EIGRP variance
- C. bandwidth metric
- D. OSPF maximum paths

Answer: A

NEW QUESTION 209

A design engineer must send management information messages across the public internet. What solution provides a secure and encrypted method for passing these messages?

- A. SNMP v3
- B. NetFlow v9
- C. Syslog Traps
- D. Secure Shell v2
- E. SNMP v2

Answer: A

NEW QUESTION 212

Which statement is true about using a DNS server to discover a controller IP?

- A. The AP sends a discovery request to the first controller on the list and then goes down the list chronologically until it receives a discovery response.
- B. The AP sends a discovery request to the last controller on the list and then goes up the list chronologically until it receives a discovery response.
- C. The AP sends a discovery request to all controllers on the list simultaneously.
- D. Multiple controller IP addresses in a DNS response are not supported.

Answer: C

NEW QUESTION 214

Drag and drop the network virtualization features from the left onto the correct functions on the right.

SONA	ensures that legitimate users and devices are recognized and authorized entry to their assigned portions of the network
access control	ensures that a legitimate user or device is mapped to the correct secure set of available resources
service edge	ensures the delivery of identity services
path isolation	ensures that the right services are accessible to the legitimate set or sets of users and devices

Answer:

Explanation:

SONA	access control
access control	path isolation
service edge	SONA
path isolation	service edge

NEW QUESTION 217

Which three options are characteristics of data center evolution? (Choose three.)

- A. consolidation
- B. virtualization
- C. automation
- D. standardization
- E. optimization
- F. modulation

Answer: ABC

NEW QUESTION 218

Which two design decisions can improve network resiliency? (Choose two)

- A. implement redundant topology
- B. implement redundant links
- C. implement serial device connections

- D. increase data plane bandwidth
- E. reduce network size

Answer: AB

NEW QUESTION 221

What is a benefit of IPv6 over IPv4 addresses?

- A. shorter addresses
- B. automatic summarization
- C. hierarchal global address space
- D. faster IGP convergence

Answer: C

NEW QUESTION 224

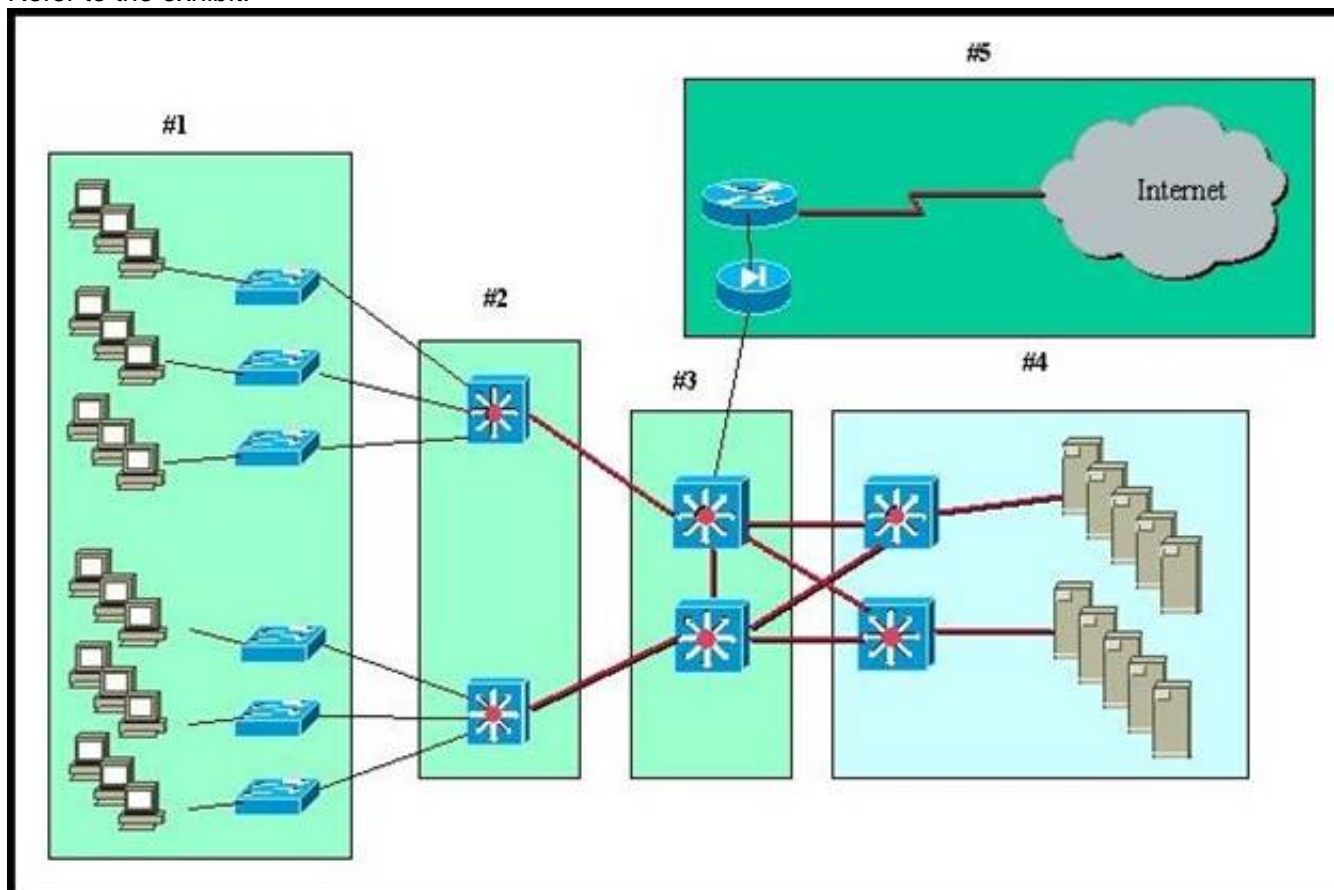
For which type of topology are modern fast-converging routing protocols designed?

- A. hub-and-spoke
- B. full mesh
- C. hierarchical
- D. star

Answer: C

NEW QUESTION 228

Refer to the exhibit.



A standard Layer 2 campus network design is pictured. Which numbered box represents the core layer?

- A. #1
- B. #2
- C. #3
- D. #4
- E. #5

Answer: C

NEW QUESTION 232

Which statement about VSS is true?

- A. it can maintain the topology independently of STP
- B. it requires HSRP.
- C. it requires STP for link redundancy
- D. it has two control planes.

Answer: A

NEW QUESTION 233

Which two high-level design components are included in Unified Wireless network?

- A. Local
- B. Cisco FlexConnect

- Answer: AB**

What two addresses are defined under RFC 1918? (Choose two.)

- Answer: BD**

Answer: AC

Answer: A

Answer: B

Answer: A

Answer: AE

visit - <https://www.certleader.com>

over the public Internet?

- A. security
- B. static versus dynamic routing
- C. bandwidth
- D. QoS
- E. latency

Answer: A

NEW QUESTION 259

What is the VLAN subnet that can handle 60 hosts?

- A. /21
- B. /24
- C. /25
- D. /26

Answer: D

NEW QUESTION 261

Which two options should be used to achieve fast convergence in an OSPF network? (Choose two.)

- A. Bidirectional Forwarding Detection
- B. fast hellos
- C. LSA retransmission interval
- D. SPF throttle timers
- E. LSA group pacing

Answer: AB

NEW QUESTION 264

Which three layers comprise the traditional hierarchical model? (Choose three.)

- A. core layer
- B. distribution layer
- C. access layer
- D. aggregation layer
- E. network layer
- F. Internet layer

Answer: ABC

NEW QUESTION 265

The spanning tree topology can be simplified by deploying what Cisco NX-OS technology in the distribution and access layer?

- A. VDC
- B. vPC
- C. Rapid PVST+
- D. VSS
- E. Flex Links

Answer: B

NEW QUESTION 266

What network technology consolidates network and storage traffic in the data center?

- A. virtual storage-area network
- B. unified fabric
- C. unified computing system
- D. virtual switching system

Answer: B

NEW QUESTION 267

For a VLAN that requires 60 hosts, which subnet is the most efficient?

- A. 172.31.17.0/27
- B. 10.0.0.1/20
- C. 192.68.15.0/24
- D. 10.10.10.0/26

Answer: D

NEW QUESTION 272

Which two major campus design models does the cisco unified wireless network support?

- A. Cisco FlexConnect
- B. N+N+1
- C. Deterministic
- D. Local Mode
- E. Dynamic

Answer: AD

Explanation: [https://www.cisco.com/c/dam/en/us/td/docs/solutions/CVD/Apr2014/CVD-CampusWirelessLanDesignGuide- Wireless Design Models Cisco Unified Wireless networks support two major campus design models: Local mode and Cisco FlexConnect.](https://www.cisco.com/c/dam/en/us/td/docs/solutions/CVD/Apr2014/CVD-CampusWirelessLanDesignGuide-Wireless-Design-Models-Cisco-Unified-Wireless-networks-support-two-major-campus-design-models-Local-mode-and-Cisco-FlexConnect.pdf)

NEW QUESTION 273

Which option best describes the high-level design document?

- A. It includes specific information such as hardware models, software versions, IP addressing, and routing protocols.
- B. It contains the test plan to certify that the customer's network is ready for use.
- C. it contains the steps needed to install and configure the network equipment and the steps that verify basic network operation.
- D. it includes business and technical requirements and the proposed network architecture.

Answer: D

Explanation: <https://learningnetwork.cisco.com/thread/98302>

"High-level design (HLD) explains the architecture that would be used for developing a software product. The architecture diagram provides an overview of an entire system, identifying the main components that would be developed for the product and their interfaces. The HLD uses possibly nontechnical to mildly technical terms that should be understandable to the administrators of the system

NEW QUESTION 277

For a VLAN that requires 70 hosts, which subnet is the most efficient?

- A. 10.0.0.1/8
- B. 172.31.17.0/26
- C. 192.168.1.0/25
- D. 192.168.15.0/24

Answer: C

NEW QUESTION 280

Which three options are examples of network logical virtualization? (Choose three.)

- A. virtual PortChannel
- B. virtual machine
- C. Virtual Device Context
- D. Virtual Switching System
- E. virtual device driver

Answer: ACD

NEW QUESTION 281

An engineer wants to ensure that the Spanning Tree topology appears loop free while redundant switches are present. Which Layer 2 technology must be used?

- A. VPC
- B. PaGP
- C. LACP
- D. OTV

Answer: C

NEW QUESTION 285

Cisco FabricPath brings the benefits of routing protocols to Layer 2 network Ethernet environments. What are two advantages of using Cisco FabricPath technology? (Choose two.)

- A. Cisco FabricPath provides MAC address scalability with conversational learning.
- B. Loop mitigation is provided by the TTL field in the frame.
- C. Cisco FabricPath technology is supported in all Cisco platforms and can replace legacy Ethernet in all campus networks.
- D. Cisco FabricPath relies on OSPF to support Layer 2 forwarding between switches, which allows load balancing between redundant paths.
- E. Cisco FabricPath is IETF-standard and is not used with Cisco products.

Answer: AB

NEW QUESTION 290

An organization must decide which routing protocol to use throughout its network. If routing is performed at the access layer, which factor must the organization consider?

- A. reduced network scalability when introducing numerous switch blocks into the routing table
- B. centralized management of ACLs at the distribution layer
- C. reliability when implementing routing over STP at the access layer
- D. performance differences between core, distribution, and access layer equipment

Answer: D

NEW QUESTION 293

Why would an engineer implement variable-length subnet masks?

- A. to make a subnet its own VLAN.
- B. to expand an existing subnet .
- C. to make a subnet public.
- D. to prevent wasting IP addresses

Answer: B

NEW QUESTION 297

Which option is a benefit of the modular approach to network design?

- A. higher availability
- B. repeatable scalability
- C. increased security
- D. improved resiliency

Answer: B

NEW QUESTION 299

GRE has been used to establish a routing-protocol neighbor relationship between two routers, across the public Internet. Which technology can you use to encrypt this communication channel?

- A. access lists
- B. IPsec
- C. CBAC
- D. IPS

Answer: B

NEW QUESTION 301

A data center is being deployed, and one design requirement is to be able to readily scale server virtualization. Which IETF standard technology can provide this requirement?

- A. Transparent Interconnection of Lots of Links
- B. Cisco FabricPath
- C. data center bridging
- D. Cisco Unified Fabric

Answer: A

NEW QUESTION 302

In which module do you place a VPN submodule when designing an enterprise network?

- A. service provider edge
- B. enterprise campus
- C. remote
- D. enterprise edge

Answer: C

NEW QUESTION 307

One step in characterizing an existing network involves obtaining information such as network performance, availability, utilization and response times. Which activity generates this information?

- A. logical network mapping
- B. network health check
- C. address and naming analysis
- D. wiring and media assessment

Answer: B

NEW QUESTION 309

Drag the characteristic on the left to the correct campus design model on the right.

- uses VSS to provide redundancy
- uses FHRP for high availability
- route filtering is configured on interfaces toward the access layer
- inter-VLAN communications are routed in the distribution layer
- only one redundant connection between the access switch and the distribution switch can be active

Layer 2 Switching Campus Design

Layer 3 Switching Campus Design

Answer:

Explanation:

uses VSS to provide redundancy

uses FHRP for high availability

route filtering is configured on interfaces toward the access layer

inter-VLAN communications are routed in the distribution layer

only one redundant connection between the access switch and the distribution switch can be active

Layer 2 Switching Campus Design

uses VSS to provide redundancy

inter-VLAN communications are routed in the distribution layer

only one redundant connection between the access switch and the distribution switch can be active

Layer 3 Switching Campus Design

uses FHRP for high availability

route filtering is configured on interfaces toward the access layer

NEW QUESTION 311

A network engineer must connect two sites. Each site has a different autonomous system number. Which method do you use to exchange routing information between the sites?

- A. OSPFv3
- B. BGP
- C. static routing
- D. EIGRP
- E. IGP

Answer: B

NEW QUESTION 315

What query should you make if you want to find all objects of a particular type in an MIT tree?

- A. mid-tree-level
- B. class-level
- C. object-level
- D. tree-level

Answer: B

Explanation: <https://www.cisco.com/c/en/us/solutions/collateral/data-center-virtualization/application-centric-infrastructure/w>

NEW QUESTION 317

Which two design decision can improve network resiliency (Choose two)?

- A. Implement redundant link
- B. Increase data plane bandwidth
- C. Implement serial device connection
- D. Reduce network size
- E. Implement redundant topology

Answer: AE

NEW QUESTION 320

Which Layer in the Cisco Enterprise Archetecture model is highly available, has fast convergence, and should avoid packet manipulation?

- A. Campus distribution
- B. enterprise data center
- C. enterprise edge
- D. campus access
- E. campus core
- F. remote access VPN

Answer: E

Explanation: <http://www.ciscopress.com/articles/article.asp?p=1315434>

NEW QUESTION 322

A network engineer is tasked to upgrade and expand a large existing production network. From the IOS CLI, what two protocols can be used to build a topology map of the existing network? (Choose two.)

- A. SNMP
- B. IP SLA
- C. ICMP Echo
- D. LLDP
- E. Traceroute

Answer: DE

NEW QUESTION 323

Which technology allows remote networks to be connected via site-to-site tunnels?

- A. IPsec VPN
- B. AnyConnect VPN
- C. SSL VPN
- D. EasyConnect VPN

Answer: A

NEW QUESTION 327

An engineer must design a new data center network and must reduce hardware costs while allowing for the benefits of a hierarchical network model. Which layer is combined with the distribution layer by a single device to accomplish this goal?

- A. campus
- B. access
- C. DMZ
- D. core

Answer: A

NEW QUESTION 332

An engineer is trying to collect information about the customer router before a design change. Which command provides the most information about the device?

- A. show cdp neighbors
- B. show controllers
- C. show tech-support
- D. show running-config

Answer: C

NEW QUESTION 333

What are two important aspects to consider when looking at backup circuit options for a branch location?

- A. local exchange carrier diversity
- B. type of dynamic routing protocol
- C. type of core switch
- D. backup MPLS connection
- E. Internet service provider diversity

Answer: BE

NEW QUESTION 338

You design a network with the following network addresses:

192.168.168.0
192.168.169.0
192.168.170.0
192.168.171.0
192.168.172.0
192.168.173.0
192.168.174.0
192.168.175.0

Which route address is the best summary of these network addresses?

- A. 192.168.0.0/24
- B. 192.168.171.128/3
- C. 192.168.168.0/21
- D. 192.168.175.0/3
- E. 192.168.0.0/16

Answer: C

NEW QUESTION 340

What Cisco product is designed to improve the performance of Windows file and exchange services in remote data centers?

- A. Application Control Engine
- B. Wide Area Application Services
- C. Cisco Application Policy Infrastructure Controller
- D. Cisco Prime Network Services Controller

Answer: B

NEW QUESTION 342

A remote worker for a sales company must submit daily updates via the company email system. The employee does not have a company-issued laptop, so which VPN method is used for connectivity to the company email server?

- A. SSL VPN
- B. GETVPN
- C. L3VPN
- D. DMVPN

Answer: A

NEW QUESTION 344

What are two purposes of route redundancy? (Choose two.)

- A. minimize the effect of link failures
- B. minimize the effect of internetworking device failures
- C. minimize the convergence time of STP
- D. load balance across redundant paths
- E. save network costs

Answer: AB

NEW QUESTION 346

A consultant at Company XYZ connects to the Guest wireless network but cannot reach the MGMT VLAN to complete an audit . Other users can connect to the MGMT VLAN without any issues. Why is the consultant unable to access the MGMT VLAN ?

- A. The AP is offline
- B. The access is not permitted
- C. The MGMT VLAN is down
- D. The WLC is offline

Answer: B

NEW QUESTION 349

What is the key limitation of using Internet circuits as a backup to a private enterprise WAN?

- A. circuit bandwidth
- B. prioritization
- C. security
- D. operational expense

Answer: B

NEW QUESTION 354

If two routing protocols have the same route and prefix, which effect do they have on the routing table?

- A. Only the route with the lowest administrative distance is added.
- B. Only the route with the highest administrative distance is added.
- C. Both routes are added.
- D. Neither route is added, and a loop is formed.

Answer: A

NEW QUESTION 357

In Cisco ACI, which option is the unified point of automation , management , monitoring and programmable?

- A. Python
- B. REST
- C. APIC
- D. Postman

Answer: C

NEW QUESTION 359

Which network virtualization technique can you implement without disrupting the existing network design and infrastructure?

- A. VRF-Lite
- B. EVN
- C. MPLS
- D. VNET tags

Answer: A

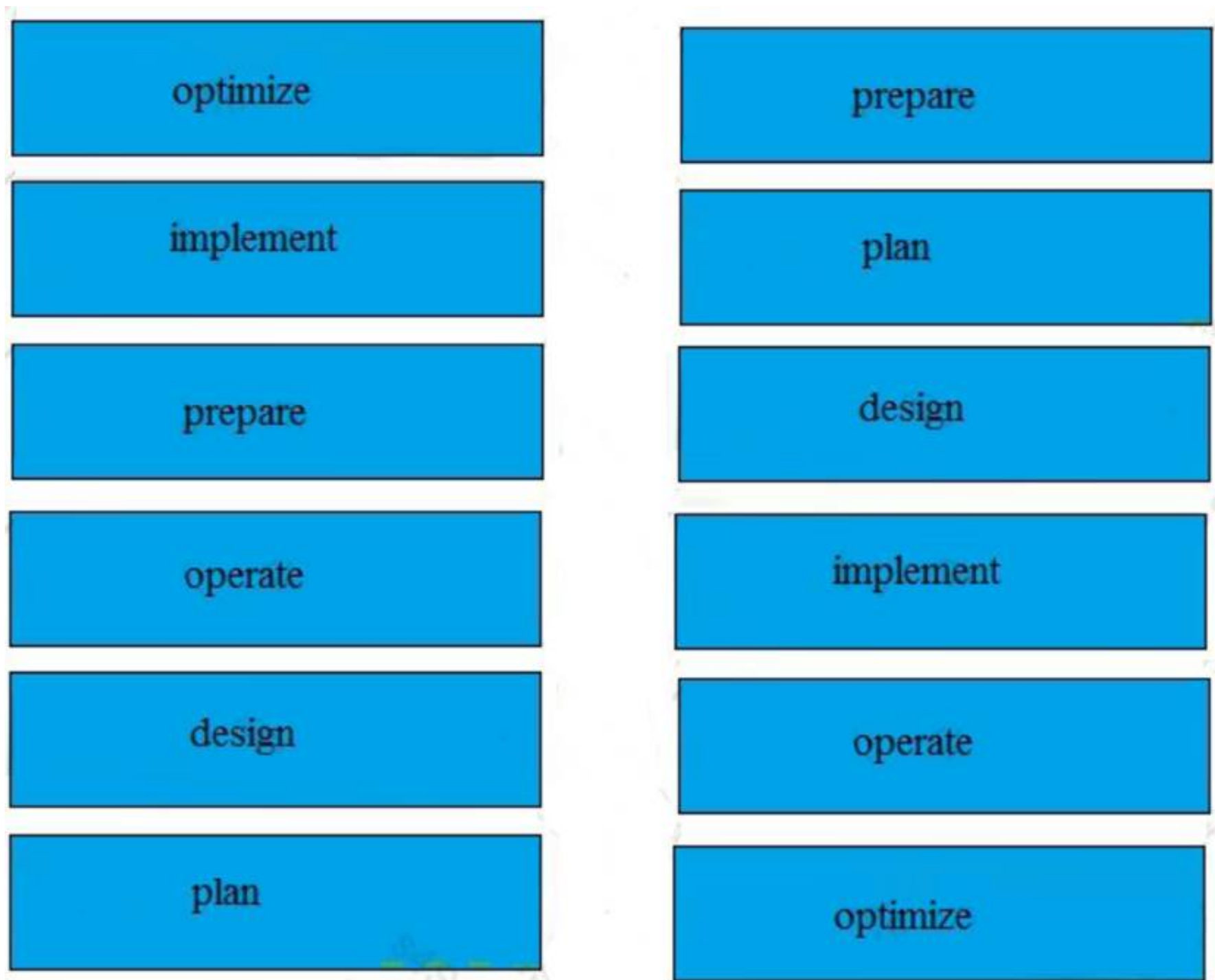
NEW QUESTION 361

Drag and drop the phases of the lifecycle of a standard network from the left into the order in which they occur in the right.

optimize	phase 1
implement	phase 2
prepare	phase 3
operate	phase 4
design	phase 5
plan	phase 6

Answer:

Explanation:



NEW QUESTION 365

Which protocol is best when there are circuit connections with two different ISPs in a multihoming scenario?

- A. SSL
- B. IPsec
- C. BGP
- D. VRRP

Answer: C

NEW QUESTION 366

Your company uses OSPF for internal routing. The company will be connected to VendorA via a single dedicated link and to VendorB via redundant dedicated links. Both vendors also use OSPF for internal routing.

Which of the following deployments describes the best intra-domain routing practice in this situation?

- A. Connect your company to both VendorA and VendorB using existing OSPF.
- B. Redistribute the routes on each link between your company and the vendors to a shared EIGRP routing protocol.
- C. Use IBGP to reach VendorA and EBGP to reach VendorB.
- D. Use static routes to reach VendorA and EBGP to reach VendorB.
- E. Use static routes to reach both VendorA and VendorB.

Answer: D

NEW QUESTION 371

Which feature must be configured on a switch port that connects to a Cisco Wireless Access Point when QoS is required?

- A. Portfast
- B. Cisco Discovery Protocol
- C. Dot1q Trunk
- D. Auto Negotiation

Answer: C

NEW QUESTION 373

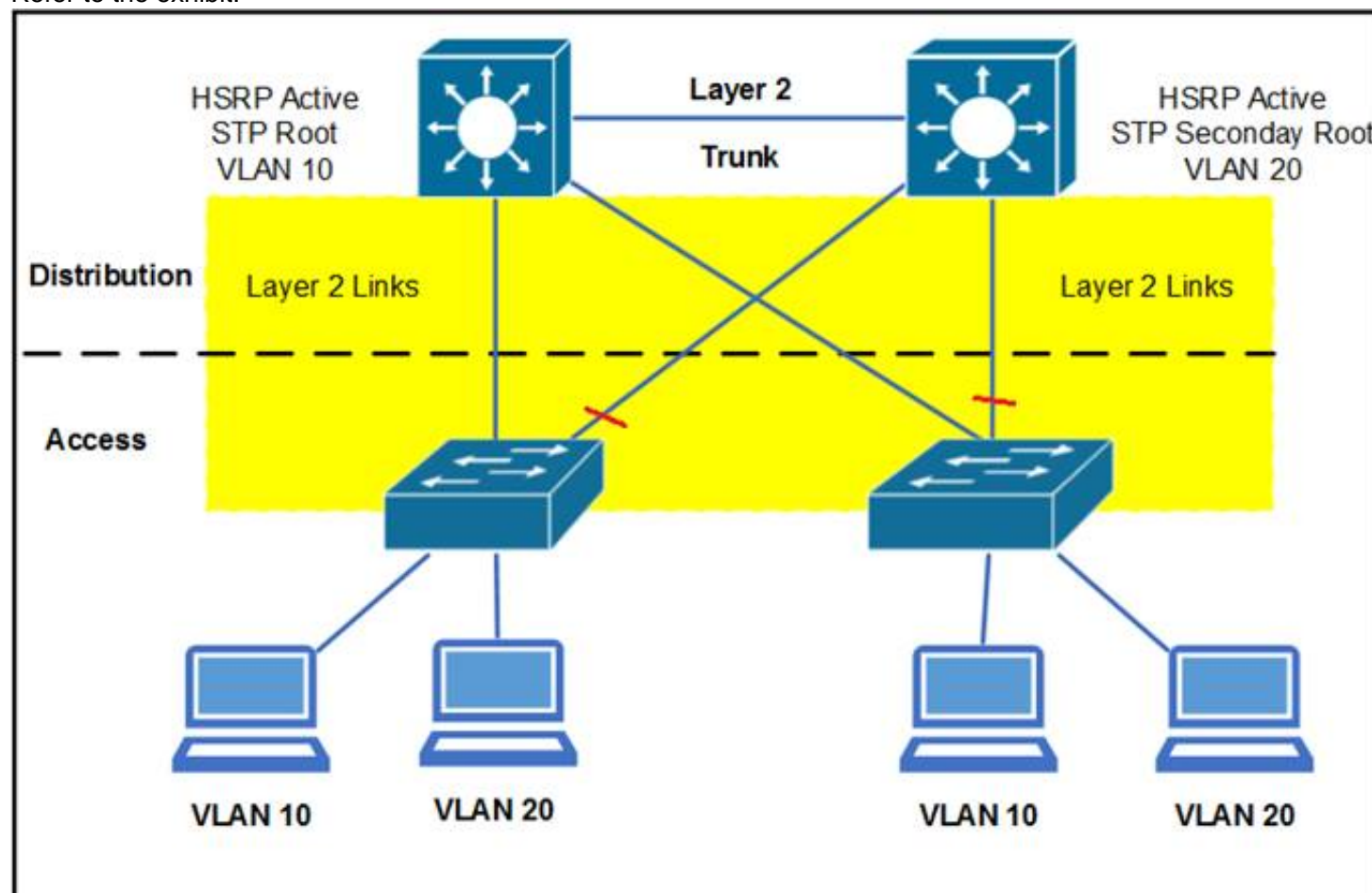
Which VPN tunneling technology supports IP multicast?

- A. DMVPN spoke-to-spoke
- B. Cisco Easy VPN
- C. IPsec direct encapsulation spoke-to-spoke
- D. IPsec direct encapsulation hub-and-spoke

Answer: A

NEW QUESTION 378

Refer to the exhibit.



The red lines refer to STP blocked ports. What happens if the HSRP active moves to the right distribution, and the STP root remains on the left distribution?

- A. The STP root becomes the gateway.
- B. The interdistribution link is used for transit.
- C. The HSRP standby becomes the gateway.
- D. The interaccess link is used for transit.
- E. Host traffic is unable to reach the HSRP active.

Answer: B

NEW QUESTION 379

An infrastructure is designing a private WAN infrastructure to support an Organization and must support quality of service and multicast functionality to the remote sites. Which WAN technology support this requirement?

- A. MPLS
- B. IPsec VPN
- C. DMVPN
- D. SSL VPN

Answer: A

NEW QUESTION 382

What is the maximum RIPv2 hop count for a reachable route?

- A. 13
- B. 14
- C. 15
- D. 16

Answer: C

NEW QUESTION 387

Which option is an advantage of the bottom-up design model?

- A. focuses on the needs of user communities
- B. includes a thorough analysis of customer requirements
- C. facilitates a quick response to client requests
- D. produces a "big-picture" of the desired outcome

Answer: C

NEW QUESTION 388

A spanning tree topology can be simplified by deploying what Cisco IOS technology in the distribution block?

- A. VDC
- B. vPC
- C. Rapid PVST+
- D. VSS
- E. Flex Links

Answer: D

NEW QUESTION 392

What are two components of the Build phase in the Cisco Design Lifecycle? (Choose two.)

- A. Migration
- B. Deployment
- C. Optimization
- D. Design
- E. Configuration

Answer: AB

NEW QUESTION 396

A network engineer has been asked to follow a top down design approach. What layer of the OSI model is used to start the design?

- A. physical
- B. network
- C. transport
- D. application

Answer: D

NEW QUESTION 399

Which is the North American RIR for IPv4 addresses?

- A. RIPE
- B. ARIN
- C. IANA
- D. IEEE
- E. APNIC

Answer: B

NEW QUESTION 403

Which option is one of the methods that Cisco routers and switches can use to share information between directly connected devices on a regular basis?

- A. NetFlow
- B. ARP
- C. NHRP
- D. CDP

Answer: D

NEW QUESTION 408

While designing the LAN core to distribution infrastructure for optimum convergence, the engineer decides to use a topology using triangles. Which benefit to the organization is true?

- A. It utilizes multiple links to route traffic to its destination.
- B. It allows device failures to occur without a recalculation of routes.
- C. It creates a topology that can grow with the organization.
- D. It allows for a smaller quantity of devices in the core.

Answer: A

NEW QUESTION 412

A network engineer requires that an OSPF ASBR must only flood external LSAs only within its own area. What OSPF area type should be configured?

- A. Backbone Area
- B. Totally Stub Area
- C. Not So Stubby Area
- D. Stub Area

Answer: C

NEW QUESTION 413

Which two routing protocols converge most quickly? (Choose two.)

- A. RIPv1
- B. RIPv2
- C. BGP
- D. OSPF
- E. EIGRP

Answer: DE

NEW QUESTION 414

In an enterprise Layer 2 switched network, which protocol must be running to enable link redundancy?

- A. CDP
- B. PaGP
- C. LACP
- D. STP

Answer: D

NEW QUESTION 419

What is the benefit of using VLSM?

- A. To save a wasting of IP Address
- B. To expand a subnet

Answer: A

NEW QUESTION 424

How to reduce the size of a routing table? (Choose two):

- A. NAT
- B. Summarization
- C. Static routes
- D. VLAN

Answer: AB

NEW QUESTION 427

In the traditional hierarchical LAN design, which two statements about the distribution layer are true? (Choose Two)

- A. It uses Layer 2 switching only.
- B. It typically is connected directly to the internet
- C. it aggregates data from the access layer
- D. Policy is implemented at this layer
- E. It provides users direct access to the network.

Answer: CD

Explanation: <http://www.ciscopress.com/articles/article.asp?p=2202410&seqNum=4>

NEW QUESTION 430

When designing changes to an existing network, which two options are documented to understand environmental constraint? (Choose two.)

- A. Utilization of network resources
- B. Floor and rack space availability
- C. Host naming conventions
- D. Heating and Air conditioning
- E. Location of existing documentation

Answer: BD

NEW QUESTION 434

What is the benefit of VLSM?

- A. reduces configuration complexity by using the same subnet mask length
- B. reduces the routing table size by using automatic route summarization
- C. reduces the routing table size by using manual route summarization
- D. allows the subnet mask and classful routing updates to be advertised
- E. secures the hosts on a subnet by using RFC 1918 addresses

Answer: C

NEW QUESTION 437

What are two industry drivers that promote network virtualization? (Choose two.)

- A. device reduction
- B. application stability
- C. traffic isolation
- D. multi-vendor support
- E. reduced complexity

Answer: AE

NEW QUESTION 438

Which option can use deep-packet examination to determine the specific nature of an attack?

- A. network IPS
- B. NetFlow collector
- C. stateful firewall
- D. syslog server

Answer: A

NEW QUESTION 443

Drag the term on the left to the matching deployment scenario on the right.

static NAT	translate a pool of addresses
dynamic NAT	translate from IPv4 to IPv6
NAT overload	translate addresses one-to-one
NAT-PT	translate using different ports

Answer:

Explanation:

static NAT	dynamic NAT
dynamic NAT	NAT-PT
NAT overload	static NAT
NAT-PT	NAT overload

NEW QUESTION 446

Which option is a benefit of Cisco Discovery Protocol?

- A. provides information about directly connected Cisco devices
- B. provides greater detail about collected data, including time stamping
- C. part of the IEEE 802.1ab standard
- D. combines with the network layer data that is gathered by NetFlow when using a NetFlow collector

Answer: A

Explanation: Cisco Discovery Protocol (formerly known as CDP) is a Layer 2, media-independent, and network-independent protocol that runs on Cisco devices and enables networking applications to learn about directly connected devices nearby. This protocol facilitates the management of Cisco devices by discovering these devices, determining how they are configured, and allowing systems using different network-layer protocols to learn about each other.

NEW QUESTION 450

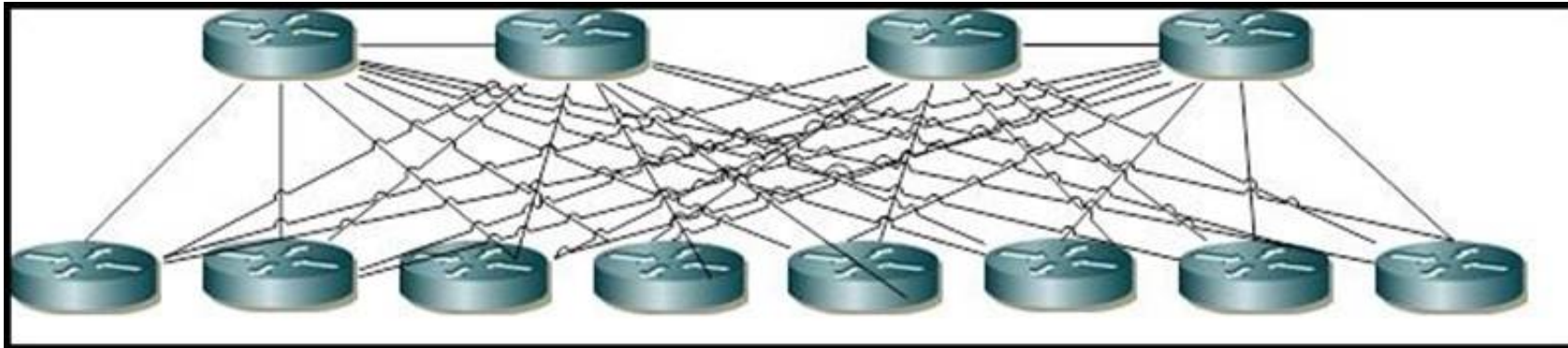
Which interior routing protocol has the most preferable administrative distance by default?

- A. RIP
- B. OSPF
- C. EIGRP
- D. BGP
- E. IS-IS

Answer: C

NEW QUESTION 454

Refer to the exhibit.



Assuming that a network will grow exponentially for the next 24 months, what is the main limitation that must be addressed?

- A. scalability
- B. serviceability
- C. redundancy
- D. resiliency

Answer: A

NEW QUESTION 459

Which option is used by OSPF to reduce the flooding domain of database updates in a network?

- A. hello packets
- B. virtual links
- C. interface cost
- D. areas

Answer: D

NEW QUESTION 460

Two companies that want to connect with multiple providers vendors, what protocol is the proper one to use

- A. BGP
- B. IS-IS
- C. OSPF
- D. EIGRP

Answer: A

NEW QUESTION 465

.....

Thank You for Trying Our Product

* 100% Pass or Money Back

All our products come with a 90-day Money Back Guarantee.

* One year free update

You can enjoy free update one year. 24x7 online support.

* Trusted by Millions

We currently serve more than 30,000,000 customers.

* Shop Securely

All transactions are protected by VeriSign!

100% Pass Your 200-310 Exam with Our Prep Materials Via below:

<https://www.certleader.com/200-310-dumps.html>