

98-367 Dumps

MTA Security Fundamentals Practice Test

<https://www.certleader.com/98-367-dumps.html>



NEW QUESTION 1

To implement WPA2 Enterprise, you would need a/an:

- A. RADIUS server
- B. SSL server
- C. WEP server
- D. VPN server

Answer: A

NEW QUESTION 2

The Active Directory controls, enforces, and assigns security policies and access rights for all users.

Select the correct answer if the underlined text does not make the statement correct. Select "No change is needed" if the underlined text makes the statement correct.

- A. NTFS permissions
- B. User Account Control
- C. Registry
- D. No change is needed

Answer: D

NEW QUESTION 3

Role separation improves server security by:

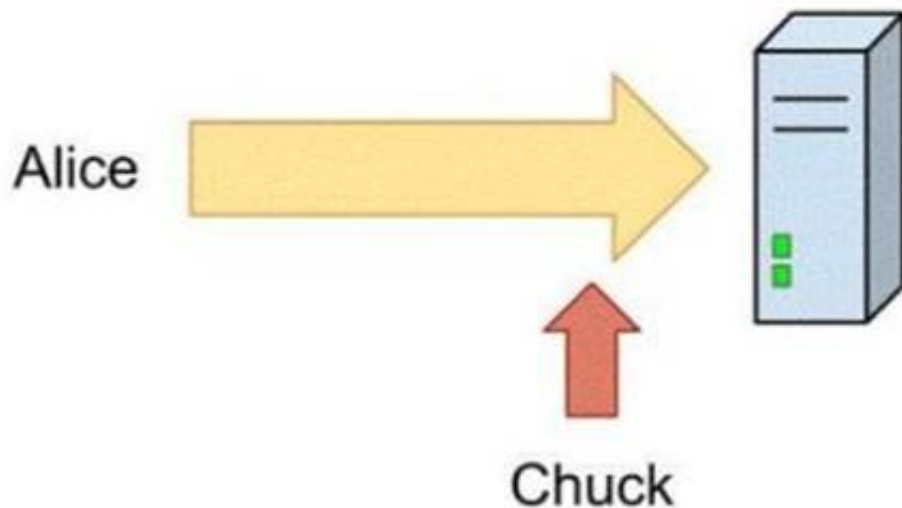
- A. Enforcing principle of least privilege.
- B. Installing applications on separate hard disks.
- C. Physically separating high security servers from other servers.
- D. Placing servers on separate VLANs.

Answer: A

NEW QUESTION 4

HOTSPOT

Alice sends her password to the game server in plaintext. Chuck is able to observe her password as shown in the following image:



Use the drop-down menus to select the answer choice that completes each statement.

Each correct selection is worth one point.

Answer Area

The scenario demonstrated is a(n)
[answer choice] attack.

Alice should **[answer choice]** to avoid
this type of attack.

Answer Area

The scenario demonstrated is a(n)
[answer choice] attack.

man in the middle
eavesdropping
denial of service

Alice should **[answer choice]** to avoid
this type of attack.

never send a plaintext password
only send passwords in plaintext to well-known companies
only send passwords in plaintext over the local network

- A. Mastered
- B. Not Mastered

Answer: A

Explanation:

Answer Area

The scenario demonstrated is a(n)
[answer choice] attack.

man in the middle
eavesdropping
denial of service

Alice should **[answer choice]** to avoid
this type of attack.

never send a plaintext password
only send passwords in plaintext to well-known companies
only send passwords in plaintext over the local network

NEW QUESTION 5

Dumpster diving refers to a physical threat that a hacker might use to look for information about a computer network.

Select the correct answer if the underlined text does not make the statement correct. Select "No change is needed" if the underlined text makes the statement correct.

- A. Phishing
- B. Malware
- C. Reverse Social engineering
- D. No change is needed

Answer: D

NEW QUESTION 6

Password history policies are used to prevent:

- A. Brute force attacks
- B. Users from sharing passwords
- C. Social engineering
- D. Passwords from being reused immediately

Answer: D

Explanation:

This security setting determines the number of unique new passwords that have to be associated with a user account before an old password can be reused. The value must be between 0 and 24 passwords.

This policy enables administrators to enhance security by ensuring that old passwords are not reused continually.

Reference: [http://technet.microsoft.com/en-us/library/cc758950\(v=ws.10\).aspx](http://technet.microsoft.com/en-us/library/cc758950(v=ws.10).aspx)

NEW QUESTION 7

What is the standard or basic collection of NTFS permissions?

- A. Read and execute, read, write, full control, modify, list folder contents
- B. Change permissions, read permissions, write permissions
- C. Read attributes, list folder/read data, traverse folder/execute file
- D. Create files/write data, create folders/append data, take ownership

Answer: A

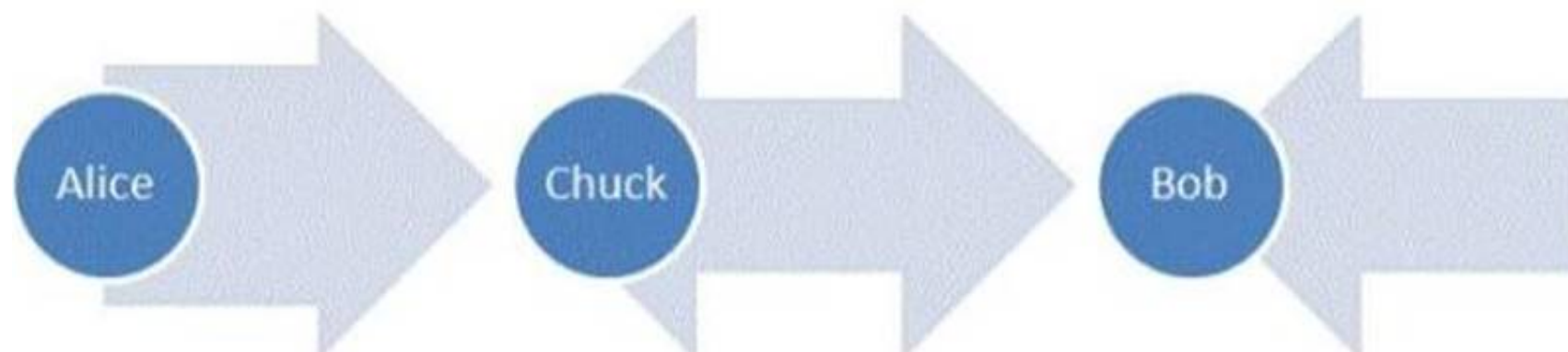
Explanation:

Reference: <http://technet.microsoft.com/en-us/library/bb727008.aspx>

NEW QUESTION 8

HOTSPOT

Alice and Bob are exchanging messages with each other. Chuck modifies the messages sent between Alice and Bob as shown in the following image:



Use the drop-down menus to select the answer choice that completes each statement. Each correct selection is worth one point.

Answer Area

The scenario demonstrated is a
[answer choice] attack.

Alice and Bob could add a **[answer choice]** to avoid this type of attack.

Answer Area

The scenario demonstrated is a
[answer choice] attack.

man in the middle
phishing
denial of service

Alice and Bob could add a **[answer choice]** to avoid this type of attack.

checksum
digital signature
timestamp

- A. Mastered
- B. Not Mastered

Answer: A

Explanation:

Answer Area

The scenario demonstrated is a
[answer choice] attack.

man in the middle
phishing
denial of service

Alice and Bob could add a **[answer choice]** to avoid this type of attack.

checksum
digital signature
timestamp

NEW QUESTION 9

The primary purpose of Network Access Protection (NAP) is to prevent:

- A. Loss of data from client computers on a network.
- B. Non-compliant systems from connecting to a network.
- C. Users on a network from installing software.
- D. Unauthorized users from accessing a network.

Answer: B

Explanation:

NAP enforces health policies by inspecting and assessing the health of client computers, restricting network access when client computers are noncompliant with health policy, and remediating noncompliant client computers to bring them into compliance with health policy before they are granted full network access. NAP enforces health policies on client computers that are attempting to connect to a network; NAP also provides ongoing health compliance enforcement while a client computer is connected to a network. Reference: [http://technet.microsoft.com/en-us/library/cc754378\(v=ws.10\).aspx](http://technet.microsoft.com/en-us/library/cc754378(v=ws.10).aspx)

NEW QUESTION 10

You are volunteering at an organization that gets a brand new web server. To make the server more secure, you should add a second administrator account. Select the correct answer if the underlined text does not make the statement correct. Select "No change is needed" if the underlined text makes the statement correct.

- A. Disable unused services
- B. Enable LM authentication
- C. Enable NTLM authentication
- D. No change is needed.

Answer: A

NEW QUESTION 10

You need to install a domain controller in a branch office. You also need to secure the information on the domain controller. You will be unable to physically secure the server.

Which should you implement?

- A. Read-Only Domain Controller
- B. Point-to-Point Tunneling Protocol (PPTP)
- C. Layer 2 Tunneling Protocol (L2TP)
- D. Server Core Domain Controller

Answer: A

Explanation:

A read-only domain controller (RODC) is a new type of domain controller in the Windows Server® 2008 operating system. With an RODC, organizations can easily deploy a domain controller in locations where physical security cannot be guaranteed. An RODC hosts read- only partitions of the Active Directory® Domain Services (AD DS) database. [http://technet.microsoft.com/en-us/library/cc732801\(v=ws.10\).aspx](http://technet.microsoft.com/en-us/library/cc732801(v=ws.10).aspx)

NEW QUESTION 13

The company that you work for wants to set up a secure network, but they do not have any servers.

Which three security methods require the use of a server? (Choose three.)

- A. 802.1x
- B. WPA2 Personal
- C. WPA2 Enterprise
- D. RADIUS
- E. 802.11ac

Answer: ACD

NEW QUESTION 16

You are an intern and are working remotely.

You need a solution that meets the following requirements:

- ? Allows you to access data on the company network securely
- ? Gives you the same privileges and access as if you were in the office

What are two connection methods you could use? (Choose two.)

- A. Forward Proxy
- B. Virtual Private Network (VPN)
- C. Remote Access Service (RAS)
- D. Roaming Profiles

Answer: BD

NEW QUESTION 21

Which attack listens to network traffic of a computer resource?

- A. Resource gathering
- B. Denial of service
- C. ARP poisoning
- D. Eavesdropping
- E. Logic bomb

Answer: D

Explanation:

Eavesdropping

In general, the majority of network communications occur in an unsecured or "cleartext" format, which allows an attacker who has gained access to data paths in your network to "listen in" or interpret (read) the traffic. When an attacker is eavesdropping on your communications, it is referred to as sniffing or snooping. The ability of an eavesdropper to monitor the network is generally the biggest security problem that administrators face in an enterprise. Without strong encryption services that are based on cryptography, your data can be read by others as it traverses the network.

NEW QUESTION 23

Which of the following describes a VLAN?

- A. It connects multiple networks and routes data packets.
- B. It is a logical broadcast domain across physical subnets.
- C. It is a subnetwork that reveals a company's externally facing resources to the public network.
- D. It allows different network protocols to communicate between different network segments.

Answer: B

Explanation:

VLAN (Virtual Local Network) is a logically separate IP subnetwork which allow multiple IP networks and subnets to exist on the same-switched network.

VLAN is a logical broadcast domain that can span multiple physical LAN segments. It is a modern way administrators configure switches into virtual local-area networks (VLANs) to improve network performance by separating large Layer 2 broadcast domains into smaller ones.

NEW QUESTION 25

What are three examples of two-factor authentication? (Choose three.)

- A. A fingerprint and a pattern
- B. A password and a smart card
- C. A username and a password
- D. A password and a pin number
- E. A pin number and a debit card

Answer: ABE

Explanation:

At minimum two-factor authentication requires two out of three regulatory-approved authentication variables such as:

- ? Something you know (like the PIN on your bank card or email password).
- ? Something you have (the physical bank card or a authenticator token).
- ? Something you are (biometrics like your finger print or iris pattern).

NEW QUESTION 29

The Windows Firewall protects computers from unauthorized network connections.

Select the correct answer if the underlined text does not make the statement correct. Select "No change is needed" if the underlined text makes the statement correct.

- A. Email viruses
- B. Phishing scams
- C. Unencrypted network access
- D. No change is needed

Answer: D

NEW QUESTION 33

Which enables access to all of the logged-in user's capabilities on a computer?

- A. Java applets
- B. ActiveX controls
- C. Active Server Pages (ASP)
- D. Microsoft Silverlight

Answer: B

NEW QUESTION 37

Which technology enables you to filter communications between a program and the Internet?

- A. RADIUS server
- B. Antivirus software
- C. Software firewall
- D. BitLocker To Go

Answer: C

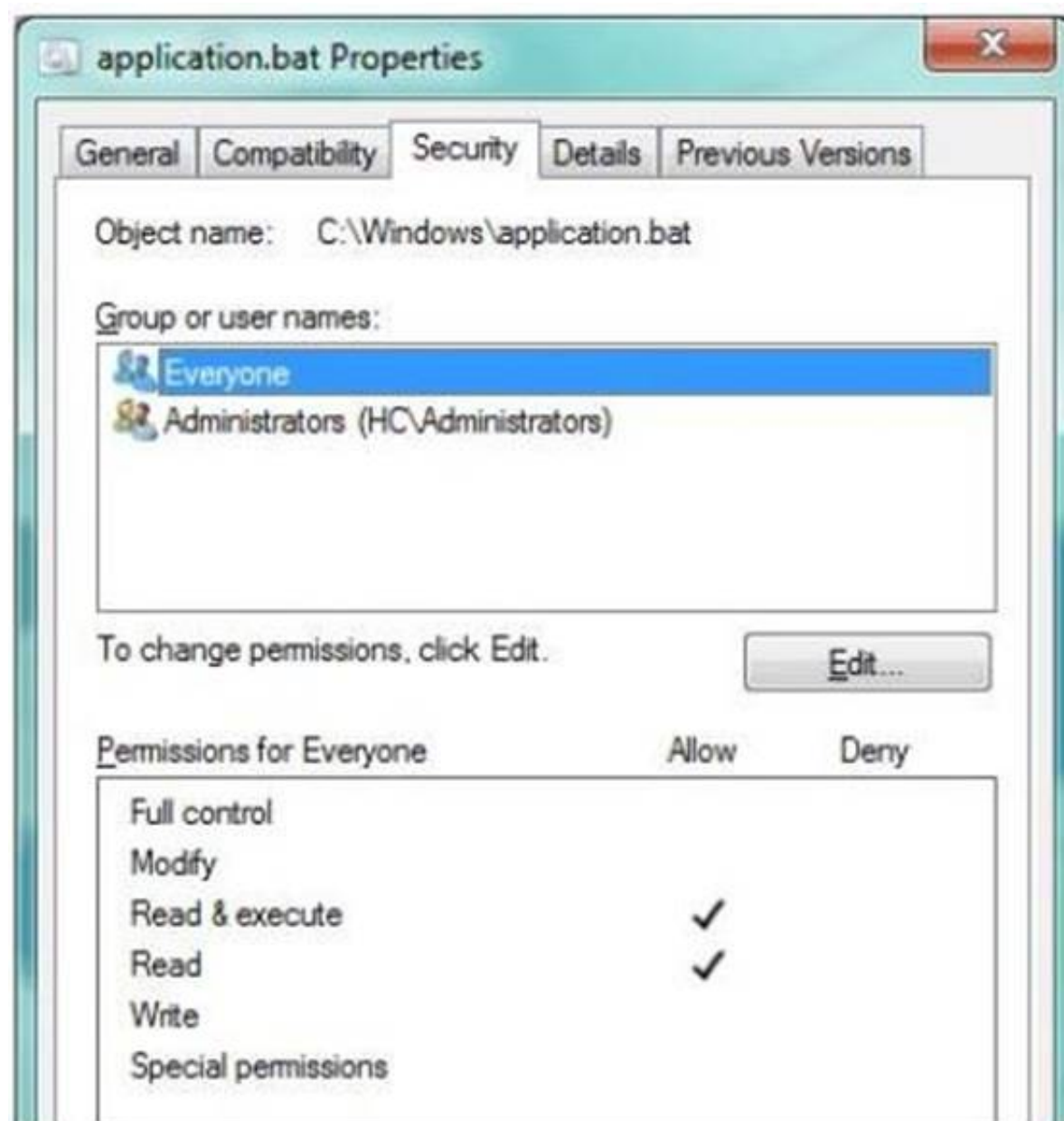
Explanation:

There are two types of firewalls the Hardware Firewall and the Software Firewall. A Software Firewall is a software program and a Hardware Firewall is a piece of hardware. Both have the same objective of filtering communications over a system.

NEW QUESTION 38

HOTSPOT

Your supervisor asks you to review file permission settings on the application.bat file. You need to report which file system the file is on and the type of permission the file has. You review the application Properties dialog box shown in the following image:



Use the drop-down menus to select the answer choice that completes each statement. Each correct selection is worth one point.

Answer Area

The "cygwin.bat" file in the image is currently on the [answer choice] file system.

[answer choice] permissions are currently being displayed for the "cygwin.bat" file.

Answer Area

The "cygwin.bat" file in the image is currently on the [answer choice] file system.

FAT16
FAT32
NTFS

[answer choice] permissions are currently being displayed for the "cygwin.bat" file.

Basic
Advanced
Full Control

- A. Mastered
- B. Not Mastered

Answer: A

Explanation:

Answer Area

The "cygwin.bat" file in the image is currently on the **[answer choice]** file system.

[answer choice] permissions are currently being displayed for the "cygwin.bat" file.



NEW QUESTION 43

The primary method of authentication in an SSL connection is passwords.

To answer, choose the option "No change is needed" if the underlined text is correct. If the underlined text is not correct, choose the correct answer.

- A. No change is needed
- B. Certificates
- C. IPsec
- D. Biometrics

Answer: B

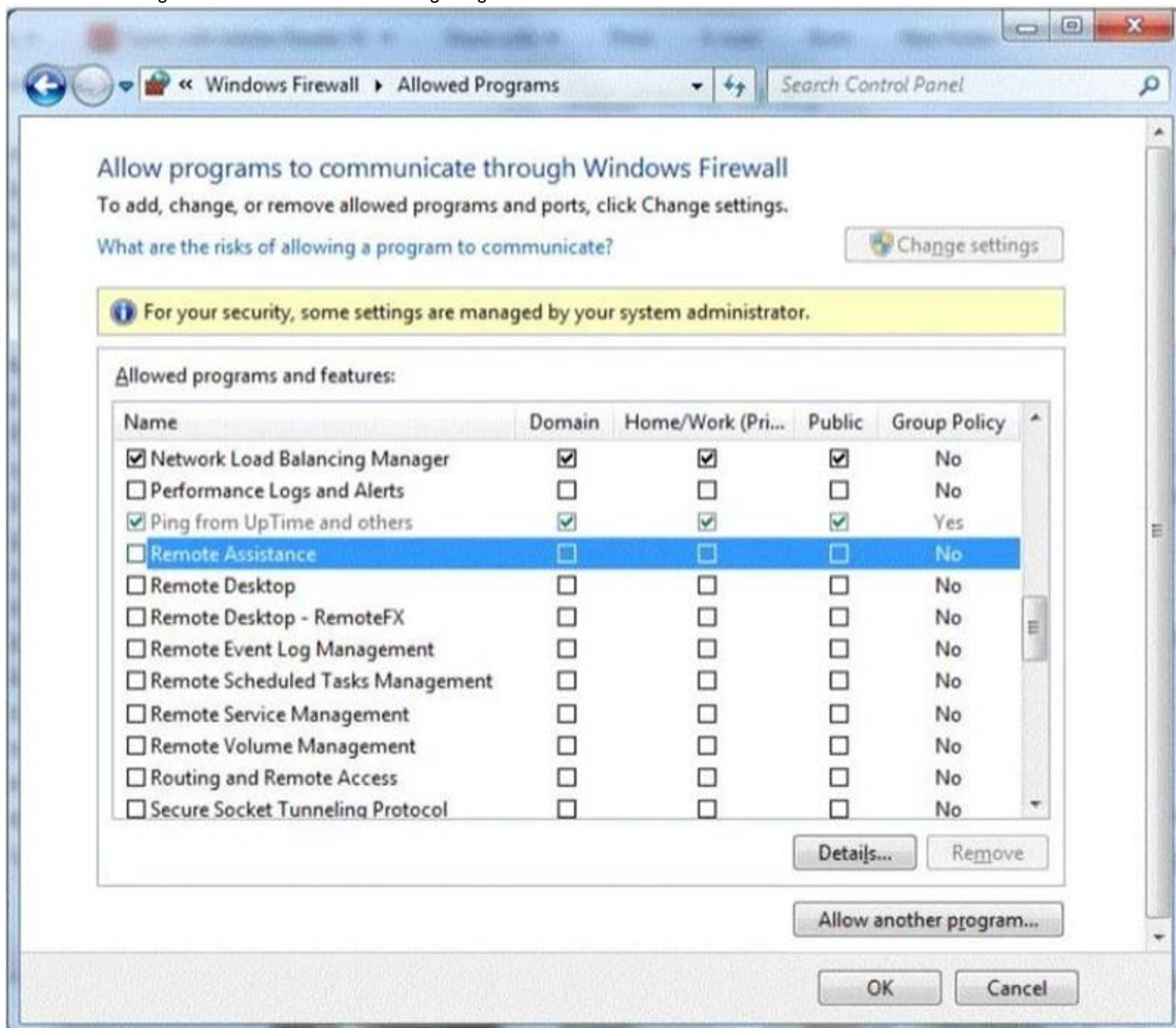
Explanation:

Reference: https://www.geocerts.com/ssl/understanding_authentication

NEW QUESTION 47

You are setting up Remote Desktop on your computer. Your computer is a member of a domain.

Your firewall configuration is shown in the following image:



You need to allow Remote Desktop to be able to get through your firewall for users on your company's network. Which settings should you enable?

- A. Remote Assistance: Home/Work (Private)
- B. Remote Desktop: Public
- C. Remote Desktop: Home/Work (Private)
- D. Remote Assistance: Domain

Answer: A

NEW QUESTION 52

HOTSPOT

For each of the following statements, select Yes if the statement is true. Otherwise, select No. Each correct selection is worth one point.

Answer Area

	Yes	No
FAT32 has built-in security features that control user access.	<input type="radio"/>	<input type="radio"/>
NFTS has built-in security features that control file access.	<input type="radio"/>	<input type="radio"/>
All users on the same FAT32 file system have access rights to all files.	<input type="radio"/>	<input type="radio"/>

- A. Mastered
- B. Not Mastered

Answer: A

Explanation:

Answer Area

	Yes	No
FAT32 has built-in security features that control user access.	<input type="radio"/>	<input checked="" type="radio"/>
NFTS has built-in security features that control file access.	<input checked="" type="radio"/>	<input type="radio"/>
All users on the same FAT32 file system have access rights to all files.	<input checked="" type="radio"/>	<input type="radio"/>

NEW QUESTION 53

Which is a special folder permission?

- A. Read
- B. Modify
- C. Write
- D. Delete

Answer: D

Explanation:

Reference: <http://support.microsoft.com/kb/308419>

NEW QUESTION 57

What does implementing Windows Server Update Services (WSUS) allow a company to manage?

- A. Shared private encryption key updates
- B. Updates to Group Policy Objects
- C. Active Directory server replication

D. Windows updates for workstations and servers

Answer: D

NEW QUESTION 58

Shredding documents helps prevent:

- A. Man-in-the-middle attacks
- B. Social engineering
- C. File corruption
- D. Remote code execution
- E. Social networking

Answer: B

Explanation:

Reference: <http://technet.microsoft.com/en-us/library/cc875841.aspx>

NEW QUESTION 60

Basic security questions used to reset a password are susceptible to:

- A. Hashing
- B. Social engineering
- C. Network sniffing
- D. Trojan horses

Answer: B

Explanation:

Reference: http://en.wikipedia.org/wiki/Self-service_password_reset

NEW QUESTION 63

Before you deploy Network Access Protection (NAP), you must install:

- A. Internet Information Server (IIS)
- B. Network Policy Server (NPS)
- C. Active Directory Federation Services
- D. Windows Update Service

Answer: B

Explanation:

Reference: <http://technet.microsoft.com/en-us/library/bb681008.aspx>

NEW QUESTION 66

A user who receives a large number of emails selling prescription medicine is probably receiving pharming mail.

Select the correct answer if the underlined text does not make the statement correct. Select "No change is needed" if the underlined text makes the statement correct.

- A. Malware
- B. Spoofed mail
- C. Spam
- D. No change is needed.

Answer: C

NEW QUESTION 71

The Graphic Design Institute hires you to help them set up a server for their 20-person team.

As a general practice of hardening the server, you start by performing which two tasks? (Choose two.)

- A. Disable the guest account.
- B. Rename the admin account.
- C. Remove the account lockout policy.
- D. Format partitions with FAT32.

Answer: AB

NEW QUESTION 72

You have two servers that run Windows Server. All drives on both servers are formatted by using NTFS.

You move a file from one server to the other server. The file's permissions in the new location will:

- A. Enable full access to the everyone group
- B. Restrict access to the Administrators group
- C. Inherit the destination folder's permissions
- D. Retain the original folder's permissions

Answer: C

Explanation:

You can modify how Windows Explorer handles permissions when objects are copied or moved to another NTFS volume. When you copy or move an object to another volume, the object inherits the permissions of its new folder.

NEW QUESTION 76

Which provides the highest level of security in a firewall?

- A. Stateful inspection
- B. Outbound packet filters
- C. Stateless inspection
- D. Inbound packet filters

Answer: A

NEW QUESTION 79

You need to limit the programs that can run on client computers to a specific list. Which technology should you implement?

- A. Windows Security Center
- B. Security Accounts Manager
- C. System Configuration Utility
- D. AppLocker group policies

Answer: A

NEW QUESTION 80

Creating MD5 hash for files is an example of ensuring what?

- A. Confidentiality
- B. Availability
- C. Least privilege
- D. Integrity

Answer: D

Explanation:

The MD5 message-digest algorithm is a widely used cryptographic hash function producing a 128-bit (16-byte) hash value, typically expressed in text format as a 32 digit hexadecimal number. MD5 has been utilized in a wide variety of cryptographic applications, and is also commonly used to verify data integrity.

NEW QUESTION 81

HOTSPOT

For each of the following statements, select Yes if the statement is true. Otherwise, select No. Each correct selection is worth one point.

Answer Area

	Yes	No
Smart cards can be used in biometrics-based systems.	<input type="radio"/>	<input type="radio"/>
Smart cards can be read from distances of several inches to many yards.	<input type="radio"/>	<input type="radio"/>
Smart cards provide a means of securely storing data on the card.	<input type="radio"/>	<input type="radio"/>

- A. Mastered
- B. Not Mastered

Answer: A

Explanation:

Answer Area

	Yes	No
Smart cards can be used in biometrics-based systems.	<input checked="" type="radio"/>	<input type="radio"/>
Smart cards can be read from distances of several inches to many yards.	<input type="radio"/>	<input checked="" type="radio"/>
Smart cards provide a means of securely storing data on the card.	<input checked="" type="radio"/>	<input type="radio"/>

NEW QUESTION 83

Network Access Protection (NAP) enables administrators to control access to network resources based on a computer's:

- A. Encryption level
- B. Warranty
- C. Physical location
- D. Configuration

Answer: D

Explanation:

Network Access Protection (NAP) is a new set of operating system components included with the Windows Server® 2008 and Windows Vista® operating systems that provides a platform to help ensure that client computers on a private network meet administrator-defined requirements for system health. NAP policies define the required configuration and update status for a client computer's operating system and critical software. For example, computers might be required to have antivirus software with the latest signatures installed, current operating system updates installed, and a host-based firewall enabled. By enforcing compliance with health requirements, NAP can help network administrators mitigate some of the risk caused by improperly configured client computers that might be exposed to viruses and other malicious software.

NEW QUESTION 85

Humongous Insurance is an online healthcare insurance company. During an annual security audit a security firm tests the strength of the company's password policy and suggests that Humongous Insurance implement password history policy. What is the likely reason that the security firm suggests this?

- A. Past passwords were easily cracked by the brute force method.
- B. Past passwords of users contained dictionary words.
- C. Previous password breaches involved use of past passwords.
- D. Past passwords lacked complexity and special characters.

Answer: B

NEW QUESTION 86

HOTSPOT

For each of the following statements, select Yes if the statement is true. Otherwise, select No. Each correct selection is worth one point.

Answer Area

	Yes	No
By using NAP, administrators can place non-compliant computers onto restricted networks.	<input type="radio"/>	<input type="radio"/>
All computers that are not in compliance with NAP policies require manual intervention to be brought into compliance.	<input type="radio"/>	<input type="radio"/>
NAP can enforce that client computers are running a firewall.	<input type="radio"/>	<input type="radio"/>

- A. Mastered
- B. Not Mastered

Answer: A

Explanation:

Answer Area

	Yes	No
By using NAP, administrators can place non-compliant computers onto restricted networks.	<input checked="" type="radio"/>	<input type="radio"/>
All computers that are not in compliance with NAP policies require manual intervention to be brought into compliance.	<input type="radio"/>	<input checked="" type="radio"/>
NAP can enforce that client computers are running a firewall.	<input checked="" type="radio"/>	<input type="radio"/>

NEW QUESTION 87

Which three elements does HTTPS encrypt? (Choose three.)

- A. Browser cookies
- B. Server IP address
- C. Port numbers
- D. Website URL
- E. Login information

Answer: ADE

Explanation:

Reference: <http://stackoverflow.com/questions/499591/are-https-urls-encrypted>

NEW QUESTION 90

You sign up for an online bank account. Every 6 months, the bank requires you to change your password. You have changed your password 5 times in the past. Instead of coming up with a new password, you decide to use one of your past passwords, but the bank's password history prevents you on doing so. Select the correct answer if the underlined text does not make the statement correct Select "No change is needed" if the underlined text makes the statement correct.

- A. Minimum password age
- B. Maximum password duration
- C. Password complexity
- D. No change is needed.

Answer: D

NEW QUESTION 92

HOTSPOT

For each of the following statements, select Yes if the statement is true. Otherwise, select No. Each correct selection is worth one point.

Answer Area

	Yes	No
To protect users from untrusted browser pop-ups, you may set a default browser configuration that blocks all pop-ups and automated downloads.	<input type="radio"/>	<input type="radio"/>
Online pop-ups and dialog boxes can display a realistic operating system or application error messages.	<input type="radio"/>	<input type="radio"/>
Protecting users from untrusted pop-up applications is mostly a function of awareness.	<input type="radio"/>	<input type="radio"/>

- A. Mastered
- B. Not Mastered

Answer: A

Explanation:

Answer Area

	Yes	No
To protect users from untrusted browser pop-ups, you may set a default browser configuration that blocks all pop-ups and automated downloads.	<input type="radio"/>	<input checked="" type="radio"/>
Online pop-ups and dialog boxes can display a realistic operating system or application error messages.	<input checked="" type="radio"/>	<input type="radio"/>
Protecting users from untrusted pop-up applications is mostly a function of awareness.	<input checked="" type="radio"/>	<input type="radio"/>

NEW QUESTION 97

This question requires that you evaluate the underlined text to determine if it is correct. The first line of defense against attacks from the Internet is a software firewall.

Select the correct answer if the underlined text does not make the statement correct. Select "No change is needed" if the underlined text makes the statement correct.

- A. hardware firewall
- B. virus software
- C. radius server
- D. No change is needed

Answer: A

NEW QUESTION 99

The purpose of Microsoft Baseline Security Analyzer is to:

- A. List system vulnerabilities.
- B. Apply all current patches to a server.
- C. Set permissions to a default level.
- D. Correct a company's security state.

Answer: A

NEW QUESTION 104

To keep third-party content providers from tracking your movements on the web, enable InPrivate Browsing.

Select the correct answer if the underlined text does not make the statement correct. Select "No change is needed" if the underlined text makes the statement correct.

- A. InPrivate Filtering
- B. SmartScreen Filter
- C. Compatibility Mode
- D. No change is needed

Answer: A

NEW QUESTION 109

The WPA2 PreShared Key (PSK) is created by using a passphrase (password) and salting it with the WPS PIN.

Select the correct answer if the underlined text does not make the statement correct. Select "No change is needed" if the underlined text makes the statement correct.

- A. Service Set Identifier (SSID)
- B. Admin password
- C. WEP key
- D. No change is needed

Answer: A

NEW QUESTION 113

Bridging is a process of sending packets from source to destination on OSI layer 3.

Select the correct answer if the underlined text does not make the statement correct. Select "No change is needed" if the underlined text makes the statement correct.

- A. Routing
- B. Switching

- C. Repeating
- D. No change is needed.

Answer: A

NEW QUESTION 115

In Internet Explorer 8, the InPrivate Browsing feature prevents:

- A. Unauthorized private data input.
- B. Unencrypted communication between the client computer and the server.
- C. User credentials from being sent over the Internet.
- D. Any session data from being stored on the computer.

Answer: D

Explanation:

Reference: <http://windows.microsoft.com/en-us/windows/what-is-inprivate-browsing>

NEW QUESTION 120

HOTSPOT

An employee where you work is unable to access the company message board in Internet Explorer. You review her Internet Options dialog box, as shown in the following image:



Use the drop-down menus to select the answer choice that completes each statement. Each correct selection is worth one point.

Answer Area

The message board, <http://mkteam/>, would be affected by settings under the **[answer choice]** security zone.

The employee can see the site, but ActiveX controls will not load. You have to **[answer choice]**

Answer Area

The message board, <http://mkteam/>, would be affected by settings under the **[answer choice]** security zone.

 Internet
 Local Intranet
 Restricted Sites

The employee can see the site, but ActiveX controls will not load. You have to **[answer choice]**

 change the security level on Local Intranet.
 change the security level on Internet.
 uncheck Enable Protected Mode.

- A. Mastered
- B. Not Mastered

Answer: A

Explanation:

Answer Area

The message board, <http://mkteam/>, would be affected by settings under the **[answer choice]** security zone.

 Internet
 Local Intranet
 Restricted Sites

The employee can see the site, but ActiveX controls will not load. You have to **[answer choice]**

 change the security level on Local Intranet.
 change the security level on Internet.
 uncheck Enable Protected Mode.

NEW QUESTION 125

HOTSPOT

For each of the following statements, select Yes if the statement is true. Otherwise, select No. Each correct selection is worth one point.

Answer Area

	Yes	No
IPsec requires network applications to be IPsec aware.	<input type="radio"/>	<input type="radio"/>
IPsec encrypts data.	<input type="radio"/>	<input type="radio"/>
IPsec adds overhead for all network communications for which it is used.	<input type="radio"/>	<input type="radio"/>

- A. Mastered
- B. Not Mastered

Answer: A

Explanation:

Answer Area

	Yes	No
IPsec requires network applications to be IPsec aware.	<input type="radio"/>	<input checked="" type="radio"/>
IPsec encrypts data.	<input checked="" type="radio"/>	<input type="radio"/>
IPsec adds overhead for all network communications for which it is used.	<input checked="" type="radio"/>	<input type="radio"/>

NEW QUESTION 129

Cookies impact security by enabling: (Choose two.)

- A. Storage of Web site passwords.
- B. Higher security Web site protections.
- C. Secure Sockets Layer (SSL).
- D. Web sites to track browsing habits.

Answer: AD

Explanation:

Reference: http://en.wikipedia.org/wiki/HTTP_cookie

NEW QUESTION 130

The purpose of User Account Control (UAC) is to:

- A. Encrypt the user's account
- B. Limit the privileges of software
- C. Secure your data from corruption
- D. Facilitate Internet filtering

Answer: B

Explanation:

User Account Control (UAC) is a technology and security infrastructure introduced with Microsoft's Windows machines. It aims to improve the security of Microsoft Windows by limiting application software to standard user privileges until an administrator authorizes an increase or elevation. In this way, only applications trusted by the user may receive administrative privileges, and malware should be kept from compromising the operating system.

NEW QUESTION 135

HOTSPOT

For each of the following statements, select Yes if the statement is true. Otherwise, select No. Each correct selection is worth one point.

Answer Area

	Yes	No
DNSSEC prevents spoofing of query responses.	<input type="radio"/>	<input type="radio"/>
Clients can verify that the DNS server that they are communicating with is legitimate.	<input type="radio"/>	<input type="radio"/>
DNSSEC prevents man-in-the-middle attacks for DNS queries.	<input type="radio"/>	<input type="radio"/>

- A. Mastered
- B. Not Mastered

Answer: A

Explanation:

Answer Area

	Yes	No
DNSSEC prevents spoofing of query responses.	<input checked="" type="radio"/>	<input type="radio"/>
Clients can verify that the DNS server that they are communicating with is legitimate.	<input checked="" type="radio"/>	<input type="radio"/>
DNSSEC prevents man-in-the-middle attacks for DNS queries.	<input checked="" type="radio"/>	<input type="radio"/>

NEW QUESTION 136

HOTSPOT

For each of the following statements, select Yes if the statement is true. Otherwise, select No. Each correct selection is worth one point.

Answer Area

	Yes	No
There are several built-in basic audit policies and advanced audit policies in Windows.	<input type="radio"/>	<input type="radio"/>
Advanced audit policies applied by a Group Policy are compatible with a basic audit policy.	<input type="radio"/>	<input type="radio"/>
A system access control list (SACL) enables administrators to log attempts to access a secured object.	<input type="radio"/>	<input type="radio"/>

- A. Mastered
- B. Not Mastered

Answer: A

Explanation:

Answer Area

	Yes	No
There are several built-in basic audit policies and advanced audit policies in Windows.	<input checked="" type="radio"/>	<input type="radio"/>
Advanced audit policies applied by a Group Policy are compatible with a basic audit policy.	<input type="radio"/>	<input checked="" type="radio"/>
A system access control list (SACL) enables administrators to log attempts to access a secured object.	<input checked="" type="radio"/>	<input type="radio"/>

NEW QUESTION 137

A group of users has access to Folder A and all of its contents. You need to prevent some of the users from accessing a subfolder inside Folder A.

What should you do first?

- A. Disable folder sharing
- B. Hide the folder
- C. Change the owner
- D. Block inheritance

Answer: A

NEW QUESTION 138

You are trying to establish communications between a client computer and a server. The server is not responding. You confirm that both the client and the server have network connectivity. Which should you check next?

- A. Microsoft Update
- B. Data Execution Prevention
- C. Windows Firewall
- D. Active Directory Domains and Trusts

Answer: D

NEW QUESTION 139

.....

Thank You for Trying Our Product

* 100% Pass or Money Back

All our products come with a 90-day Money Back Guarantee.

* One year free update

You can enjoy free update one year. 24x7 online support.

* Trusted by Millions

We currently serve more than 30,000,000 customers.

* Shop Securely

All transactions are protected by VeriSign!

100% Pass Your 98-367 Exam with Our Prep Materials Via below:

<https://www.certleader.com/98-367-dumps.html>