

Exam Questions 70-697

Configuring Windows Devices

<https://www.2passeasy.com/dumps/70-697/>



NEW QUESTION 1

Your network contains an Active Directory domain named contoso.com. The domain contains Windows 10 Enterprise client computers. Your company has a subscription to Microsoft Office 365. Each user has a mailbox that is stored in Office 365 and a user account in the contoso.com domain. Each mailbox has two email addresses. You need to add a third email address for each user. What should you do?

- A. From Active Directory Users and Computers, modify the E-mail attribute for each user.
- B. From Microsoft Azure Active Directory Module for Windows PowerShell, run the Set-Mailbox cmdlet.
- C. From Active Directory Domains and Trust, add a UPN suffix for each user.
- D. From the Office 365 portal, modify the Users settings of each user.

Answer: B

Explanation: We can use the Set-Mailbox cmdlet to modify the settings of existing mailboxes.

The EmailAddresses parameter specifies all the email addresses (proxy addresses) for the recipient, including the primary SMTP address. In on-premises Exchange organizations, the primary SMTP address and other proxy addresses are typically set by email address policies. However, you can use this parameter to configure other proxy addresses for the recipient.

To add or remove specify proxy addresses without affecting other existing values, use the following syntax:

@{Add="[<Type>]:<emailaddress1>", "[<Type>]:<emailaddress2>" ...; Remove="[<Type>]:<emailaddress2>", "[<Type>]:<emailaddress2>" ...}.

NEW QUESTION 2

You support Windows 10 Enterprise computers. Your company has started testing Application Virtualization (App-V) applications on several laptops. You discover that the App-V applications are available to users even when the laptops are offline. You need to ensure that the App-V applications are available to users only when they are connected to the company network. What should you do?

- A. Change user permissions to the App-V applications.
- B. Disable the Disconnected operation mode.
- C. Configure mandatory profiles for laptop users.
- D. Reset the App-V client FileSystem cache.

Answer: B

Explanation: Disconnected operation mode is enabled by default and allows App-V applications to be available to users even when the laptops are offline. We need to disable Disconnected operation mode to prevent offline access.

The disconnected operation mode settings—accessible by right-clicking the Application Virtualization node, selecting Properties, and clicking the Connectivity tab—enables the Application Virtualization Desktop Client or Client for Remote Desktop Services (formerly Terminal Services) to run applications that are stored in the file system cache of the client when the client is unable to connect to the Application Virtualization Management Server.

NEW QUESTION 3

You have an image of Windows 10 Enterprise named Image1. Image1 has version number 1.0.0.0 of a custom, line-of-business universal app named App1. You deploy Image1 to Computer1 for a user named User1. You need to update App1 to version 1.0.0.1 on Computer1 for User1 only. What command should you run? To answer, select the appropriate options in the answer area.

● ● ● ● ●

Answer Area

App1_1.0.0.1

● ● ● ● ●

Answer Area

App1_1.0.0.1

Add-AppxPackage	-dependancypath
Add-AppxProvisionedPackage	-MainPackage
Set-AppxProvisionedDataFile	-path

Answer:

Explanation: In this question, we need to update App1 to version 1.0.0.1 on Computer1 “for User1 only”. The Add-AppxPackage cmdlet adds a signed app package (.appx) to a user account.

To update the application, we need to use the -path parameter to specify the path to the upgraded application.

NEW QUESTION 4

You administer a Windows 10 Enterprise computer that runs Hyper-V. The computer hosts a virtual machine with multiple snapshots. The virtual machine uses one virtual CPU and 512 MB of RAM. You discover that the virtual machine pauses automatically and displays the state as paused-critical. You need to identify the component that is causing the error.

Which component should you identify?

- A. no virtual switch defined
- B. insufficient memory
- C. insufficient hard disk space
- D. insufficient number of virtual processors

Answer: C

Explanation: In this question, the VM has “multiple snapshots” which would use up a lot of disk space. Virtual machines will go into the “Paused-Critical” state in Hyper-V if the free space on the drive that contains the snapshots goes below 200MB.

One thing that often trips people up is if they have their virtual hard disks configured on one drive – but have left their snapshot files stored on the system drive. Once a virtual machine snapshot has been taken– the base virtual hard disk stops expanding and the snapshot file stores new data that is written to the disk – so it is critical that there is enough space in the snapshot storage location.

NEW QUESTION 5

You are the desktop administrator for a small company.

Your workgroup environment consists of Windows 10 Enterprise computers. You want to prevent 10 help desk computers from sleeping. However, you want the screens to shut off after a certain period of time if the computers are not being used.

You need to configure and apply a standard power configuration scheme for the 10 help desk computers on your network.

Which two actions should you perform? Each correct answer presents part of the solution.

- A. Import the power scheme by using POWERCFG /IMPORT on each of the remaining help desk computer
- B. Set the power scheme to Active by using POWERCFG /S.
- C. Use POWERCFG /X on one help desk computer to modify the power scheme to meet the requirements.Export the power scheme by using POWERCFG /EXPORT.
- D. Use POWERCFG /S on one help desk computer to modify the power scheme to meet the requirements.Export the power scheme by using POWERCFG /EXPORT.
- E. Import the power scheme by using POWERCFG /IMPORT on each of the remaining help desk computer
- F. Set the power scheme to Active by using POWERCFG /X.

Answer: AB

Explanation: You can use the Powercfg.exe tool to control power settings and configure computers to default to Hibernate or Standby modes.

In this question, we use POWERCFG /X on one help desk computer to modify the power scheme to meet our requirements. After configuring the required settings, we can export the power scheme settings to a file by using POWERCFG /EXPORT.

We can then import the power scheme from the file on each of the remaining help desk computers by using POWERCFG /IMPORT. After importing the power scheme on the remaining computers, we need to set the new power scheme to be the active power scheme by using POWERCFG /S.

NEW QUESTION 6

You have a Microsoft Intune subscription.

You have three security groups named Security1, Security2 and Security3. Security1 is the parent group of Security2. Security2 has 100 users.

You need to change the parent group of Security2 to be Security3. What should you do first?

- A. Edit the properties of Security1.
- B. Edit the properties of Security2.
- C. Delete security2.
- D. Remove all users from Security2.

Answer: C

Explanation: You cannot change the parent group of a security group in Microsoft Intune. You can only delete the group and recreate another group with the correct parent.

Deleting a group does not delete the users that belong to that group. Therefore, you do not need to remove the users from the group; you can just delete the group and recreate it.

NEW QUESTION 7

You manage Microsoft Intune for a company named Contoso. Intune client computers run Windows 10 Enterprise.

You notice that there are 25 mandatory updates listed in the Intune administration console.

You need to prevent users from receiving prompts to restart Windows following the installation of mandatory updates.

Which policy template should you use?

- A. Microsoft Intune Agent Settings
- B. Windows Configuration Policy
- C. Microsoft Intune Center Settings
- D. Windows Custom Policy (Windows 10 and Windows 10 Mobile)

Answer: A

Explanation: To configure the Prompt user to restart Windows during Intune client agent mandatory updates update policy setting you have to configure the Microsoft Intune Agent Settings policy. Setting the Prompt user to restart Windows during Intune client agent mandatory updates setting to No would prevent users from receiving prompts to restart Windows following the installation of mandatory updates.

NEW QUESTION 8

You manage Microsoft Intune for a company named Contoso. You have 200 computers that run Windows 10. The computers are Intune clients.

You need to configure software updates for the clients.

Which policy template should you use to configure each software updates setting? To answer, drag the appropriate policy templates to the correct settings. Each policy template may be used once, more than once, or not at all. You may need to drag the split bar between panes or scroll to view content.

Answer:

Explanation: You must make use of the Microsoft Intune Windows general configuration policy to configure settings for enrolled devices. The system settings that can be configured using this policy include the following:

To configure the Allow immediate installation of updates that do not interrupt Windows update policy setting you have to configure and deploy a Microsoft Intune Agent Settings policy.

NEW QUESTION 9

A company has 100 client computers that run Windows 10 Enterprise.

A new company policy requires that all client computers have static IPv6 addresses. You need to assign static IPv6 addresses to the client computers. Which Network Shell (netsh) command should you run?

- A. add address
- B. set interface
- C. set global
- D. set address

Answer: A

Explanation: The add address Network Shell (netsh) command adds an IPv6 address to a specified interface.

NEW QUESTION 10

You have a network that contains Window 10 Enterprise computers.

The network configuration of one of the computers is shown in the following output.

Windows IP Configuration

```
Host Name . . . . . : Computer1
Primary Dns Suffix . . . . . :
Node Type . . . . . : Hybrid
IP Routing Enabled. . . . . : No
WINS Proxy Enabled. . . . . : No
```

Wireless LAN adapter Local Area Connection* 10:

```
Media State . . . . . : Media disconnected
Connection-specific DNS Suffix . :
Description . . . . . : Microsoft Wi-Fi Direct Virtual Adapter #5
Physical Address. . . . . : E8-B1-94-0A-8E-10
DHCP Enabled. . . . . : Yes
Autoconfiguration Enabled . . . . : Yes
```

Etheret adapter Ethernet:

```
Connection-specific DNS Suffix . :
Description . . . . . : DisplayLink Network Adapter NCM#5
Physical Address. . . . . : 00-50-2E-00-7D-F0
DHCP Enabled. . . . . : Yes
Autoconfiguration Enabled . . . . : Yes
Link-local IPv6 Address . . . . . : fe80::c4e9:416b:3ebe:a6cb%13(Preferred)
Default Gateway . . . . . : fe80::224:1ff:fedf:699f%34
DHCPv6 IAID . . . . . : 771772598
DHCPv6 Client DUID. . . . . : 00-01-00-01-1A-B8-FC-74-88-53-2E-00-7D-F0
DNS Servers . . . . . : fec0:0:0:ffff::1%1
                        fec0:0:0:ffff::1%2
                        fec0:0:0:ffff::1%3
NetBIOS over Tcpip. . . . . : Disabled
```

Wireless LAN adapter Wi-Fi:

```
Connection-specific DNS Suffix . :
Description . . . . . : Intel(R) Dual Band Wireless-AC 7260 #2
Physical Address. . . . . : E8-B1-FC-29-7D-F0
DHCP Enabled. . . . . : Yes
Autoconfiguration Enabled . . . . : Yes
IPv4 Address. . . . . : 10.1.1.133(Preferred)
Subnet Mask . . . . . : 255.255.255.0
Lease Obtained. . . . . : Thursday, August 13, 2015 12:01:10 PM
Lease Expires . . . . . : Saturday, August 21, 2015 10:37:18 AM
Default Gateway . . . . . : 10.1.1.1
DHCP Server . . . . . : 10.1.1.1
DNS Servers . . . . . : 10.1.1.1
NetBIOS over Tcpip. . . . . : Enabled
```

Use the drop-down menus to select the answer choice that completes each statement based on the information presented in the output.
 NOTE: Each correct selection is worth one point.

Answer Area

The computer has obtained [answer choice] from a DHCP server.

The computer [answer choice] access the Internet.

Answer:

Explanation: The exhibit below shows that the computer obtained its IPv4 address from a DHCP server. It also shows when the DHCP lease was obtained and when it will expire.

```
DHCP Enabled. . . . . : Yes
Autoconfiguration Enabled . . . . : Yes
IPv4 Address. . . . . : 10.1.1.133(Preferred)
Subnet Mask . . . . . : 255.255.255.0
Lease Obtained. . . . . : Thursday, August 13, 2015 12:01:10 PM
Lease Expires . . . . . : Saturday, August 21, 2015 10:37:18 AM
```

The IPv6 address shown below starts with 'fe80'. This is an auto-configuration address, not an address obtained from a DHCP server.

```
Link-local IPv6 Address . . . . . : fe80::c4e9:416b:3ebe:a6cb%13(Preferred)
```

The IP address of the Default Gateway is 10.1.1.1

NEW QUESTION 10

You manage 50 computers that run Windows 10 Enterprise.

You have a Windows to Go workspace installed on a USB drive named USB1. You need to configure USB1 to meet the following requirements:

When you run Windows to Go from USB1, you can see the contents of the computer's internal drives from File Explorer.

When you connect USB1 to a computer that runs Windows 10, you can automatically view the content of USB1 from File Explorer.

In the table below, select the action that must be performed to achieve each requirement. NOTE: Make only one selection in each column. Each correct selection is worth one point.

Answer Area		
Actions	When you run Windows To Go from USB1, you can see the contents of the computer's internal drives from File Explorer.	When you connect USB1 to a computer that runs Windows 10, you can automatically view the content of USB1 from File Explorer
From DiskPart, configure the san policy option.	<input type="radio"/>	<input type="radio"/>
From DiskPart, configure the attributes volume option.	<input type="radio"/>	<input type="radio"/>
From DiskPart, configure the attributes disk option	<input type="radio"/>	<input type="radio"/>
From fsutil, configure the volume option.	<input type="radio"/>	<input type="radio"/>
From fsutil, configure the behavior option.	<input type="radio"/>	<input type="radio"/>

Answer:

Explanation: If you want to view the contents of the computer's internal drives from File Explorer when you run Windows To Go from USB1, you have to launch an elevated command prompt, run disk part and then execute the List disk command. You now have to select the internal disk using the sel disk command, and then enter the online disk command.

Configuring the attributes volume option from DiskPart allows you to display, set, or clear the attributes of a volume.

NEW QUESTION 11

You have a computer named Computer1 that runs Windows 10 Enterprise. You add a 1 TB hard drive and create a new volume that has the drive letter D.

You need to limit the amount of space that each user can consume on D: to 200 GB. Members of the Administrators group should have no limit.

Which three actions should you perform? Each correct answer presents part of the solution.

- A. Run fsutil quota violations D:.
- B. Enable the Deny disk space to users exceeding quota limit setting.
- C. Enable the Enable Quota Management setting.
- D. Set a default quota limit.
- E. Run convert D: /FS:NTFS.

F. Add a quota entry.

Answer: BCD

Explanation: To limit the amount of space that each user can consume, you should enable the Enable Quota Management setting, and then enter the appropriate values in the Limit Disk Space To text box and the Set Warning Level To text box, and then select the Deny Disk Space To Users Exceeding Quota Limit check box to enforce identical quota limits for all users.

NEW QUESTION 13

You have a Windows 10 Enterprise computer. You have a 1-terabyte external hard drive. You purchase a second 1-terabyte external hard drive. You need to create a fault-tolerant volume that includes both external hard drives. You also need to ensure that additional external hard drives can be added to the volume. Which three actions should you perform in sequence? To answer, move the appropriate actions from the list of actions to the answer area and arrange them in the correct order.

Actions

- Restore your data from the backup.
- From Storage Spaces, create a new storage pool. Set the Resiliency Type to **two-way mirror**.
- From Storage Spaces, create a new storage pool. Set the Resiliency Type to **parity**.
- From Storage Spaces, create a new storage pool. Set the Resiliency Type to **three-way mirror**.
- Back up the existing data on your original external hard drive.
- From Disk Management, create and format a new volume on the second external drive.
- From Disk Management, create a mirrored volume containing the two external drives.

Answer Area



Answer:

Explanation: Storage Spaces can combine multiple hard drives into a single virtual drive. To create a storage space, you'll have to connect two or more additional internal or external drives to your computer to create a storage pool. When creating the pool, any existing data on the disks will be lost. It is therefore important to back up the data if you do not want to lose it. You can also specify an arbitrarily large logical size. When your existing drive begins to fill up and nears the physical limit, Windows will display a notification in the Action Center, prompting you to add additional physical storage space. Selecting the Two-way mirror resiliency type allows Windows to store two copies of your data, so that you won't lose your data if one of your drives fails.

References:

<http://www.howtogeek.com/109380/how-to-use-windows-8s-storage-spaces-to-mirror-combine-drives/>

NEW QUESTION 14

You support Windows 10 Enterprise computers that are members of an Active Directory domain. Recently, several domain user accounts have been configured with super-mandatory user profiles.

A user reports that she has lost all of her personal data after a computer restart.

You need to configure the user's computer to prevent possible user data loss in the future. What should you do?

- A. Remove the .man extension from the user profile name.
- B. Configure FolderRedirection by using the domain group policy.
- C. Configure the user's documents library to include folders from network shares.
- D. Add the .dat extension to the user profile name.

Answer: B

Explanation: Folder Redirection allows administrators to redirect the path of a folder to a new location, which can be a folder on the local computer or a directory on a network file share. Users can then work with documents on a server as if the documents were based on a local drive, but are available to the user from any computer on the network. Folder Redirection can be found under Windows Settings in the console tree by editing domain-based Group Policy via the Group Policy Management Console (GPMC).

NEW QUESTION 18

You purchase a new Windows 10 Enterprise desktop computer. You have four external USB hard drives. You want to create a single volume by using the four USB drives. You want the volume to be expandable, portable and resilient in the event of failure of an individual USB hard drive. You need to create the required volume. What should you do?

- A. From Control Panel, create a new Storage Space across 4 USB hard drive
- B. Set resiliency type to Three-way mirror.
- C. From Control Panel, create a new Storage Space across 4 USB hard drive
- D. Set resiliency type to Parity.

- E. From Disk Management, create a new spanned volume.
- F. From Disk Management, create a new striped volume.

Answer: B

Explanation: Storage Spaces can combine multiple hard drives into a single virtual drive. To create a storage space, you'll have to connect two or more additional internal or external drives to your computer to create a storage pool. You can also specify an arbitrarily large logical size. When your existing drive begins to fill up and nears the physical limit, Windows will display a notification in the Action Center, prompting you to add additional physical storage space. Selecting the Parity resiliency type allows Windows to store parity information with the data, thereby protecting you from a single drive failure.

Topic 6, Manage data access and protection

NEW QUESTION 21

You have a computer that runs Windows 10 Enterprise that contains the following folders:



You have a local user named User1. User1 has read and execute permission to Folder1. You need to ensure that User1 can perform the following tasks:
The solution must use the principle of least privilege.

Which permissions should you assign to User1 on each folder? To answer, drag the appropriate permissions to the correct folders. Each permission may be used once, more than once, or not at all. You may need to drag the split bar between panes or scroll to view content.

Permissions

Full Control

List Folder Contents

Modify

Read

Read & Execute

Write

Answer Area

Folder2:

Permission

Folder3:

Permission

Folder5:

Permission

Answer:

Explanation: Advanced permissions are detailed permissions that are grouped together to create the standard permissions. The permissions in this question are standard permissions.

Folder2: To create new files in a folder, you need Write permission to the folder. The 'Write' standard permission includes the 'Create files / write data' advanced permission.

Folder3: To edit existing files in a folder, you need Modify permission.

Folder5: To change the permissions of files in a folder, you need the 'Change Permissions' advanced permission. The Change Permission advanced permission is in the 'Full Control' standard permission group. Therefore, the answer for Folder5 is Full Control.

References:

<http://windows.microsoft.com/en-gb/windows/before-applying-permissions-file-folder#1TC=windows-7>

NEW QUESTION 25

You have a Windows 10 Enterprise computer.

The computer has a shared folder named C:\Marketing. The shared folder is on an NTFS volume. The current NTFS and share permissions are configured as follows.

Group name	NTFS permission	Shared folder permission
Everyone	Read and Execute	Read
Marketing	Modify	Full Control

UserA is a member of both the Everyone group and the Marketing group. UserA must access C:\Marketing from across the network. You need to identify the effective permissions of UserA to the C:\Marketing folder.

What permission should you identify?

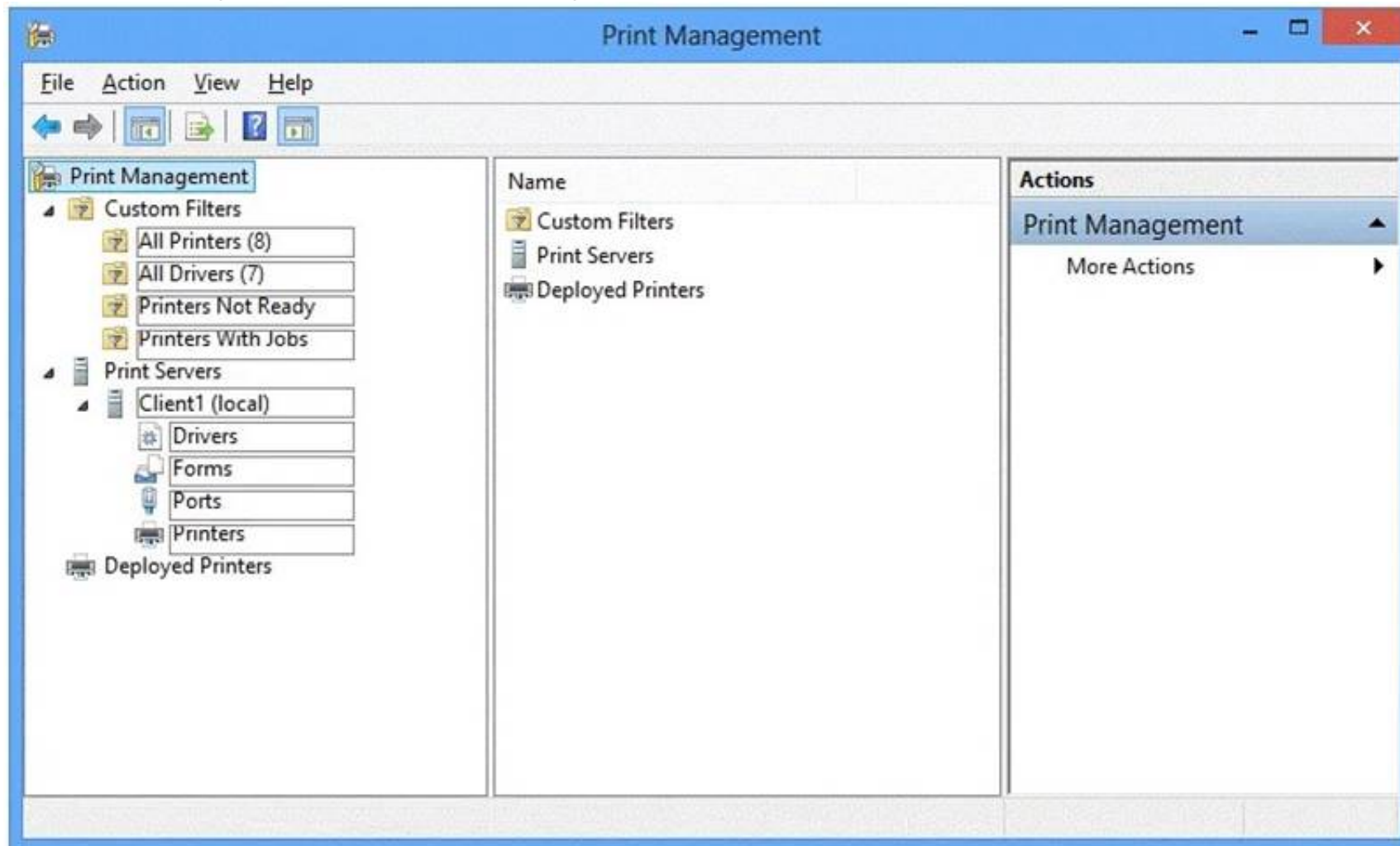
- A. Full Control
- B. Read and Execute
- C. Read
- D. Modify

Answer: D

Explanation: UserA is a member of both the Everyone group and the Marketing group and UserA must access C:\Marketing from across the network. When accessing a file locally, you combine the NTFS permissions granted to your account either directly or by way of group membership. The 'least' restrictive permission is then the permission that applies. In this question, the NTFS permission is the least restrictive of Read/Execute and Modify... so Modify is the effective permission. When accessing a folder or file across the network, you combine the effective NTFS permissions (Modify in this case) with the effective Share permissions granted to your account either directly or by way of group membership (Full Control in this case). The 'most' restrictive permission is then the permission that applies. Modify is more restrictive than Full Control so Modify is the effective permission.

NEW QUESTION 26

You administer Windows 10 Enterprise computers in your company network, including a computer named Wst1. Wst1 is configured with multiple shared printer queues. Wst1 indicates hardware errors. You decide to migrate the printer queues from Wst1 to a new computer named Client1. You export the printers on Wst1 to a file. You need to import printers from the file to Client1. From the Print Management console, which Print Management node should you select? To answer, select the appropriate node in the answer area.



Answer:

Explanation: We have exported the printers on Wst1 to a file. To import printers from the file to Client1, we use the Printer Migration Wizard. Right-click Print Management, and then click Migrate Printers to open the Printer Migration Wizard. Select Import printer queues and printer drivers from a file, and select the export file. Then complete the wizard.
References:
<http://blogs.technet.com/b/canitpro/archive/2013/06/17/step-by-step-install-use-and-remove-windows-server-mi>

NEW QUESTION 30

Your company upgrades a research and development department workstation to a Windows 10 Enterprise computer. Two of the workstation's folders need to be encrypted. The folders are named C:\ProtectedFiles and C:\Backups. You attempt to encrypt the folders. The output is shown in the following exhibit.

```

Administrator: Command Prompt

C:\>cipher /e /s:ProtectedFiles

Setting the directory ProtectedFiles to encrypt new files [OK]

Encrypting files in C:\ProtectedFiles\

Project1.zip      [OK]
Project2.zip      [OK]
Project3.zip      [OK]
Project4.zip      [OK]

5 file(s) [or directorie(s)] within 2 directorie(s) were encrypted.

Converting files from plaintext to ciphertext may leave sections of old
plaintext on the disk volume(s). It is recommended to use command
CIPHER /W:directory to clean up the disk after all converting is done.

C:\>cipher /e /s:Backups

Setting the directory Backups to encrypt new files [OK]

Encrypting files in C:\Backups\

Backup.zip        [ERR]
Backup.zip: The specified file is read only.
OldBackup.zip     [OK]

2 file(s) [or directorie(s)] within 2 directorie(s) were encrypted.

Converting files from plaintext to ciphertext may leave sections of old
plaintext on the disk volume(s). It is recommended to use command
CIPHER /W:directory to clean up the disk after all converting is done.

C:\>_
    
```

Use the drop-down menus to select the answer choice that completes each statement. NOTE: Each correct selection is worth one point.

Answer Area

The attempt to encrypt the ProtectedFiles folder and files [answer choice]

The attempt to encrypt the Backups folder and files [answer choice]

Answer Area

The attempt to encrypt the ProtectedFiles folder and files [answer choice]

succeeded for all files and folders.
 succeeded for the files but not for the folder.
 will not finish until you run the command to clean up the disk.

The attempt to encrypt the Backups folder and files [answer choice]

failed to encrypt the files and folders.
 encrypted the folder but not the files.
 failed to encrypt one of the files but encrypted the folder and the other file.

Answer:

Explanation: We can see from the image below that all files and the ProtectedFiles folder were encrypted successfully (There are no errors and there is an [OK] message for each action).

```

C:\>cipher /e /s:ProtectedFiles

Setting the directory ProtectedFiles to encrypt new files [OK]

Encrypting files in C:\ProtectedFiles\

Project1.zip      [OK]
Project2.zip      [OK]
Project3.zip      [OK]
Project4.zip      [OK]

5 file(s) [or directorie(s)] within 2 directorie(s) were encrypted.
    
```

The image below shows that the folder was encrypted successfully (Setting the directory Backups to encrypt new files [OK]). The file Backup.zip failed to encrypt because the file is read only. The other file, OldBackup.zip was encrypted successfully.

```
C:\>cipher /e /s:Backups

Setting the directory Backups to encrypt new files [OK]

Encrypting files in C:\Backups\

Backup.zip          [ERR]
Backup.zip: The specified file is read only.
OldBackup.zip       [OK]

2 file(s) [or directorie(s)] within 2 directorie(s) were encrypted.
```

References: <https://technet.microsoft.com/en-us/library/bb490878.aspx>

Topic 7, Manage remote access

NEW QUESTION 35

You have a desktop computer and a tablet that both run Windows 10 Enterprise.

The desktop computer is located at your workplace and is a member of an Active Directory domain. The

network contains an Application Virtualization (App-V) infrastructure. Several App-V applications are deployed to all desktop computers.

The tablet is located at your home and is a member of a workgroup. Both locations have Internet connectivity. You need to be able to access all applications that run on the desktop computer from you tablet.

Which actions should you perform on each computer? To answer, drag the appropriate action to the correct computer. Each action may be used once, more than once, or not at all. You may need to drag the split bar between panes or scroll to view content.

Actions	Answer Area
Enable Remote Desktop.	desktop computer Action
Enable Remote Assistance.	tablet Action
Install Client Hyper-V.	
Install the Application Virtualization (App-V) Client.	
Deploy Application Virtualization (App-V) packages.	
Run the Remote Desktop Client.	

Answer:

Explanation: You can connect to your work computer by using Remote Desktop. You first need to enable Remote Desktop on the work computer. You then run the Remote Desktop Client on the home computer to connect to the work computer.

With Remote Desktop Connection, you can connect to a computer running Windows from another computer running Windows that's connected to the same network or to the Internet. For example, you can use all of your work computer's programs, files, and network resources from your home computer, and it's just like you're sitting in front of your computer at work.

To connect to a remote computer, that computer must be turned on, it must have a network connection, Remote Desktop must be enabled, you must have network access to the remote computer (this could be through the Internet), and you must have permission to connect. For permission to connect, you must be on the list of users. Before you start a connection, it's a good idea to look up the name of the computer you're connecting to and to make sure Remote Desktop connections are allowed through its firewall.

NEW QUESTION 39

You have a computer named Computer1 that runs Windows 10 Enterprise. Computer1 is a member of an Active Directory domain named contoso.com.

You have a line-of-business universal app named App1. App1 is developed internally.

You need to ensure that you can run App1 on Computer1. The solution must meet the following requirements: Minimize costs to deploy the app.

Minimize the attack surface on Computer1. What should you do?

- A. Have App1 certified by the Windows Store.
- B. Sign App1 with a certificate issued by a third-party certificate authority.
- C. From the Update & Security setting on Computer1, enable the Sideload apps setting.
- D. Run the Add-AppxProvisionedPackage cmdlet.

Answer: C

Explanation: To install the application, you need to 'Sideload' it. First you need to enable the Sideload apps setting. LOBW indows Store apps that are not signed by the Windows Store can be sideloaded or added to a PC in the enterprise through scripts at runtime on a per-user basis. They can also be provisioned in an image by the enterprise so that the app is registered to each new user profile that's created on the PC. The requirements to sideload the app per-user or in the image are the same, but the Windows PowerShell cmdlets you use to add, get, and remove the apps are different.

Before you can sideload LOB Windows Store apps that are not signed by the Windows Store, you will need to configure the PC.

NEW QUESTION 40

You have a server that runs Windows Server 2012 R2 server named Server1. Server1 has Remote Desktop Services (RDS) installed. You create a session collection named Session1 and publish a RemoteApp in Session1. Server1 has an application named App1. The executable for App1 is C:\Apps\App1.exe. You need to ensure that App1 is available as a RemoteApp in Session1. What command should you run? To answer, select the appropriate options in the answer area.

.....

Answer Area

"Session1" -DisplayName "App1"
 "C:\Apps\App1.exe"

Answer Area

"Session1" -DisplayName "App1"
 -CollectionName
 -InformationVariable
 -UserGroup
 "C:\Apps\App1.exe"
 -FilePath
 -FileVirtualPath
 -RequiredCommandLine
 -ShowInWebAccess

Answer:

Explanation: We need to publish App1 as a RemoteApp. We do this with the New-RDRemoteApp cmdlet. The -CollectionName parameter allows us to specify the session as "Session1". The display name for the App1 will be "App1". The -FilePath parameter allows us to specify the path to the executable for App1.

NEW QUESTION 42

You have a computer named Computer1 that runs Windows 10 Enterprise. Computer1 is configured to receive Windows updates from the Internet. If a user is logged on to Computer1, you need to prevent Computer1 from automatically restarting without the logged on user's consent after the installation of the Windows updates. What should you do?

- A. Enable the Defer upgrades setting.
- B. Edit the Automatic App Update scheduled task.
- C. Configure the Choose how updates are delivered setting.
- D. Configure the Choose how updates are installed setting.

Answer: D

Explanation: In the Choose how updates are installed setting, you can use the drop-down menu to choose an option: The Schedule a restart option will allow the user to choose when the computer is restarted. Of the answers given, this is the only way to prevent Computer1 from automatically restarting without the logged on user's consent after the installation of the Windows updates.

NEW QUESTION 43

You administer a Windows 10 Enterprise computer. The computer has File History turned on, and system protection turned on for drive C. You accidentally delete a folder named Libraries\Customers by using the Shift+Delete keyboard shortcut. You need to restore the most recent version of the folder to its original location. Which approach should you use to restore the folder?

- A. Recycle Bin
- B. the latest restore point
- C. File History
- D. a manually selected restore point

Answer: C

Explanation: File History is similar to Previous Versions in previous versions of Windows. It takes regular backups of your data and saves them to a separate disk volume or external drive. When File History is enabled, it backs up all the system libraries and your custom libraries by default. To restore a deleted folder, you can browse to the parent folder or library and select Restore Previous Versions. The Previous Versions tab will list the previous versions that can be restored to its original location or restored to an alternative location.

NEW QUESTION 48

A company has client computers that run Windows 10. The client computer systems frequently use IPSec tunnels to securely transmit data. You need to configure the IPSec tunnels to use 256-bit encryption keys. Which encryption type should you use?

- A. 3DES
- B. DES
- C. RSA
- D. AES

Answer: D

Explanation: IPSec tunnels can be encrypted by 256-bit AES.

L2TP/IPsec allows multiprotocol traffic to be encrypted and then sent over any medium that supports point-to-point datagram delivery, such as IP or Asynchronous Transfer Mode (ATM).

The L2TP message is encrypted with one of the following protocols by using encryption keys generated from the IKE negotiation process: Advanced Encryption Standard (AES) 256, AES 192, AES 128, and 3DES encryption algorithms.

NEW QUESTION 51

You are using sysprep to prepare a system for imaging.

You want to reset the security ID (SID) and clear the event logs. Which option should you use?

- A. /generalize
- B. /oobe
- C. /audit
- D. /unattend

Answer: A

Explanation: Generalize prepares the Windows installation to be imaged.

If this option is specified, all unique system information is removed from the Windows installation. The security ID (SID) resets, any system restore points are cleared, and event logs are deleted.

The next time the computer starts, the specialize configuration pass runs. A new security ID (SID) is created, and the clock for Windows activation resets, if the clock has not already been reset three times.

NEW QUESTION 54

IPv6 has a vastly larger address space than IPv4. This expansion provides flexibility in allocating addresses and routing traffic and eliminates the primary need for network address translation (NAT).

Do you know how many more bits there are in an IPv4 address compared to an IPv6 address?

- A. 4 times more
- B. 6 times more
- C. Twice as many
- D. 8 times more

Answer: A

Explanation: IPv4 addresses are 32 bit, IPv6 addresses are 128 bit. Four times more bits are used for Ipv6 compared to Ipv4.

NEW QUESTION 59

You are using sysprep to prepare a system for imaging.

You want to enable end users to customize their Windows operating system, create user accounts, name the computer, and other tasks.

Which sysprep setting should you use?

- A. /oobe
- B. /audit
- C. /generalize
- D. /unattend

Answer: A

Explanation: The /oobe option restarts the computer into Windows Welcome mode. Windows Welcome enables end users to customize their Windows operating system, create user accounts, name the computer, and other tasks. Any settings in the oobe System configuration pass in an answer file are processed immediately before Windows Welcome starts.

NEW QUESTION 64

At home, you use a Windows 10 desktop computer. At work, you use a Windows 10

laptop that is connected to a corporate network. You use the same Microsoft account to log on to both computers.

You have a folder with some personal documents on your desktop computer. The folder must be available and synced between both computers.

You need to ensure that the latest version of these files is available. What should you do?

- A. Create a folder by using OneDrive for Window
- B. Move all of the personal documents to the new folder.
- C. Move the folder to the Libraries folde
- D. Go to PC Setting
- E. Under Sync your settings, enable App settings.
- F. Right-click the folder and click Propertie
- G. Under Security, provide Full Control for the Microsoft account.
- H. Right-click the folder and select Share With, and then select Homegroup (view and edit).

Answer: A

Explanation: To save a doc you're working on to OneDrive, select a OneDrive folder from the list of save locations. To move files to OneDrive, open File Explorer and then drag them into a OneDrive folder.

Note: OneDrive (previously SkyDrive, Windows Live SkyDrive, and Windows Live Folders) is a file hosting service that allows users to sync files and later access them from a web browser or mobile device. Users can share files publicly or with their contacts; publicly shared files do not require a Microsoft account to access them. OneDrive is included in the suite of online services formerly known as WindowsLive.

NEW QUESTION 65

You have 100 client Windows 10 computers. Users are NOT configured as local administrators. You need to prevent the users from running applications that they downloaded from the Internet, unless the applications are signed by a trusted publisher.

What should you configure in the Security settings from the Action Center?

- A. Virus protection
- B. User Account Control
- C. Windows SmartScreen settings
- D. Network Access Protection

Answer: C

Explanation: SmartScreen checks files that you download from the web against a list of reported malicious software sites and programs known to be unsafe. If it finds a match, SmartScreen will warn you that the download has been blocked for your safety. SmartScreen also checks the files that you download against a list of files that are well known and downloaded by many people who use Internet Explorer. If the file that you're downloading isn't on that list, SmartScreen will warn you.

NEW QUESTION 66

You are a systems administrator of a small branch office. Computers in the office are joined to a Windows 10 HomeGroup.

The HomeGroup includes one shared printer and several shared folders.

You join a new computer to the HomeGroup and try to access the HomeGroup shared folders. You discover that the shared folders are unavailable, and you receive an error message that indicates the password is incorrect.

You need to reconfigure the new computer in order to access the HomeGroup resources.

What should you do?

- A. Adjust the time settings on the new computer to match the time settings of the HomeGroup computers.
- B. Change the Enterprise password and re-enter it on the computers of all members of the HomeGroup.
- C. Change the default sharing configuration for the shared folders on the HomeGroup computers.
- D. Reset your account password to match the HomeGroup password.

Answer: A

Explanation: Symptoms

When joining a system to a HomeGroup, you may receive the following error message "The password is incorrect", even though you have typed the password correctly.

Cause

This can be caused by a difference in the Date and Time settings on the computer

trying to join the HomeGroup, and not an invalid password. If the date/time of the computer joining a HomeGroup is greater than 24 hours apart from the date/time of the system that owns the HomeGroup, this will cause the error.

Resolution

Adjust the date/time settings on the system joining the HomeGroup, to match the system that owns the HomeGroup, and then try to join again.

NEW QUESTION 71

You administer Windows 10 Enterprise laptop and desktop computers. Your company uses Active Directory Domain Services (AD DS) and Active Directory Certificate Services (AD CS).

Your company decides that access to the company network for all users must be controlled by two-factor authentication.

You need to configure the computers to meet this requirement. What should you do?

- A. Install smart card readers on all computer
- B. Issue smart cards to all users.
- C. Enable the Password must meet complexity requirements policy settin
- D. Instruct users to logon by typing their user principal name (UPN) and their strong password.
- E. Create an Internet Protocol security (IPsec) policy on each Windows 10 Enterprise computer to encrypt traffic to and from the domain controller
- F. Issue photo identification to all user
- G. Instruct all users to create and use a picture password.

Answer: A

Explanation: Smart cards contain a microcomputer and a small amount of memory, and they provide secure, tamper-proof storage for private keys and X.509 security certificates.

A smart card is a form of two-factor authentication that requires the user to have a smart card and know the PIN to gain access to network resources.

NEW QUESTION 72

Your network contains an Active Directory domain and 100 Windows 10 client computers. All software is deployed by using Microsoft Application Virtualization (App-V) 5.0.

Users are NOT configured as local administrators.

Your company purchases a subscription to Microsoft Office 365 that includes Office 365 ProPlus.

You need to create an App-V package for Office 365 ProPlus. What should you do?

- A. Run the Office Customization Tool (OCT), run the App-V Sequencer and then run Setup /Packager.
- B. Download the Office Deployment Tool for Click-to-Run, run the App-V Sequencer and then run Setup /Admin.
- C. Download the Office Deployment Tool for Click-to-Run, run Setup /Download and then run Setup /Packager.
- D. Run the Office Customization Tool (OCT), run Setup /Download and then run the App-V Sequencer.

Answer: C

Explanation: The Office Deployment Tool allows the administrator to customize and manage Office 2013 Volume License or Office 365 Click-to-Run deployments. The Office Deployment Tool Setup runs the following tasks:

Setup /Download – Downloads files to create an Office 15 installation Setup /Configure – Adds, removes, or configures an Office 15 installation Setup /Packager – Produces an Office 15 App-V package

NEW QUESTION 75

You are a systems administrator for your company. The company has employees who work remotely by using a virtual private network (VPN) connection from their computers, which run Windows 8 Pro.

These employees use an application to access the company intranet database servers. The company recently decided to distribute the latest version of the application through using a public cloud.

Some users report that every time they try to download the application by using Internet Explorer, they receive a warning message that indicates the application could harm their computer.

You need to recommend a solution that prevents this warning message from appearing, without compromising the security protection of the computers. What should you do?

- A. Publish the application through a public file transfer protocol (FTP) site.
- B. Publish the application through an intranet web site.
- C. Instruct employees to disable the SmartScreen Filter from within the Internet Explorer settings.
- D. Publish the application to Windows Store.

Answer: B

Explanation: As the publication is to be published on the cloud, we should publish in through the Windows Store.

NEW QUESTION 78

You administer computers that run Windows 8 Enterprise in an Active Directory domain in a single Active Directory Site. All user account objects in Active Directory have the Manager attribute populated. The company has purchased a subscription to Windows Intune. The domain security groups are synchronized with the Microsoft Online directory.

You create a Windows Intune group that specifies a manager as a membership criterion. You notice that the group has no members.

You need to ensure that users that meet the membership criteria are added to the Windows Intune group. What should you do?

- A. Force Active Directory replication within the domain.
- B. Ensure that all user accounts are identified as synchronized users.
- C. Ensure that the user who is performing the search has been synchronized with the Microsoft Online directory.
- D. Synchronize the Active Directory Domain Service (AD DS) with the Microsoft Online directory.

Answer: B

Explanation: For users and security groups to appear in the Windows Intune administrator console, you must sign in to the Windows Intune account portal and do one of the following:

Manually add users or security groups, or both, to the account portal.

Use Active Directory synchronization to populate the account portal with synchronized users and security groups.

The Windows Intune cloud service enables you to centrally manage and secure PCs through a single web-based console so you can keep your computers, IT staff, and users operating at peak performance from virtually anywhere without compromising the essentials: cost, control, security, and compliance.

References: <http://technet.microsoft.com/en-us/windows/intune.aspx> <http://technet.microsoft.com/library/hh441723.aspx>

NEW QUESTION 81

You support Windows 10 Enterprise laptops that are part of a workgroup. An employee is unable to start Windows Mobility Center on his laptop.

You need to make it possible for the employee to use Windows Mobility Center on the laptop. What should you do?

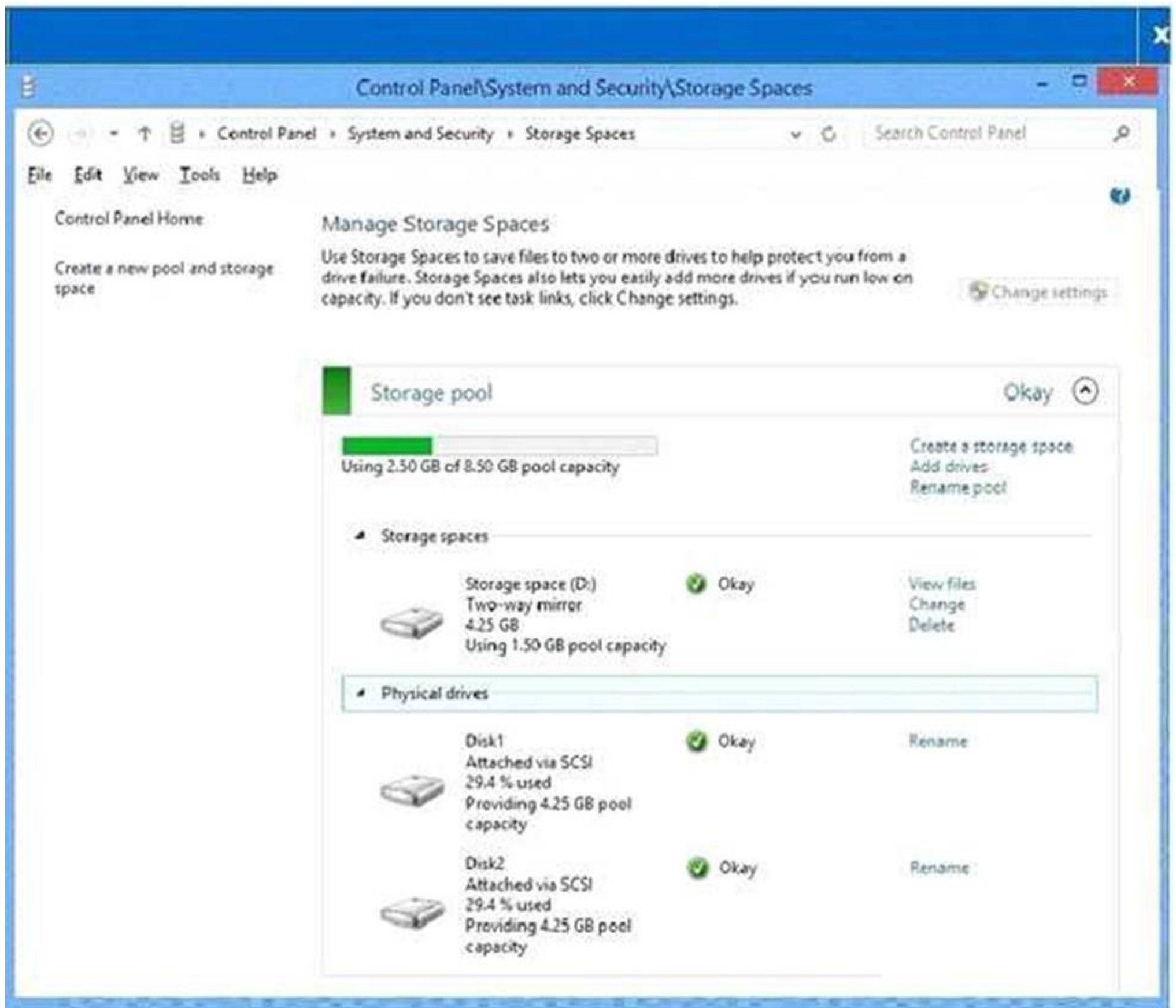
- A. Use Add features to Windows 10 Enterprise to add Windows Mobility Center.
- B. Use Programs and Features to repair the installation of Windows Mobility Center.
- C. Use Local Group Policy Editor to set Turn off Windows Mobility Center to Not Configured.
- D. Use Turn Windows features on or off in Programs and Features to enable Windows Mobility Center.

Answer: C

Explanation: To Enable or Disable Windows Mobility Center using Group Policy

NEW QUESTION 86

You have a Windows 8.1 Enterprise client computer named Computer1. The Storage Spaces settings of Computer1 are configured as shown in the following exhibit. (Click the Exhibit button.)



You plan to create a three-way mirror storage space in the storage pool and to set the size of the storage space to 50 GB. You need to identify the minimum number of disks that must be added to the storage pool for the planned mirror. How many disks should you identify?

- A. 1
- B. 3
- C. 4
- D. 5

Answer: B

Explanation: In Windows Server 2012 Storage Spaces and Windows 8 Storage Spaces, a 2-way mirror requires at least 2 physical disks. However, a 3-way mirror requires at least 5 physical disks. The reason is that a 3-way mirror uses a quorum. In order to keep running, the mirror space must keep over 50% of the disks functioning. So a 3-way mirror must have at least 5 physical disks to be able to survive the loss of up to 2 physical disks.

NEW QUESTION 89

Your company has Windows 10 client computers. All of the computers are managed by using Windows Intune. You need to provide a user with the ability to deploy software to the computers by using Windows Intune. The solution must minimize the number of permissions assigned to the user. Which role should you use?

- A. User management administrator from the Windows Intune account portal
- B. Global administrator from the Windows Intune account portal
- C. Service administrator from the Windows Intune administrator console
- D. Service administrator from the Windows Intune account portal

Answer: C

Explanation: As a service administrator, you use the Microsoft Intune administrator console to manage day-to-day tasks, such as deploying applications, for Intune.

NEW QUESTION 93

HOTSPOT

Your company has a main office and two branch offices named Branch1 and Branch2. The main office contains a file server named Server1 that has BranchCache enabled. Branch1 contains a server named Server2 that is configured as a hosted cache server. The average round trip network latency between the offices is 100 milliseconds.

All client computers run Windows 8 Enterprise. All of the computers are joined to an Active Directory domain.

The BranchCache settings of all the computers are configured as shown in the following exhibit. (Click the Exhibit button.)

BranchCache GPO

Scope Details Settings Delegation Status

BranchCache GPO

Data collected on: 5/17/2013 7:30:30 AM [hide all](#)

Computer Configuration (Enabled) [hide](#)

Policies [hide](#)

Administrative Templates [hide](#)

Policy definitions (ADMX files) retrieved from the local computer.

Network/BranchCache [hide](#)

Policy	Setting	Comment
Configure BranchCache for network files	Enabled	
Type the maximum round trip network latency (milliseconds) after which caching begins	80	
Enable Automatic Hosted Cache	Enabled	
Discovery by Service Connection Point		
Set BranchCache Distributed Cache mode	Enabled	
Set percentage of disk space used for client computer cache	Enabled	
Specify the percentage of total disk space allocated for the cache	5	
Turn on BranchCache	Enabled	

User Configuration (Enabled) [hide](#)

No settings defined.

In the table below, identify the effective setting for the client computers in each branch office.

Note: Make one selection in each column. Each correct selection is worth one point.

Effective setting	Branch1 Computers	Branch2 Computers
Will not use BranchCache.	<input type="checkbox"/>	<input type="checkbox"/>
Will retrieve cached content from peers.	<input type="checkbox"/>	<input type="checkbox"/>
Will retrieve cached content from Server1.	<input type="checkbox"/>	<input type="checkbox"/>
Will retrieve cached content from Server2.	<input type="checkbox"/>	<input type="checkbox"/>

Answer:

Explanation: Both Server1 and Server2 will cache content for their local clients. Note: BranchCache has two modes of operation:
References: <https://blogs.technet.microsoft.com/canitpro/2013/05/13/step-by-step-enabling-branchcache-in-microsoft-windows-server-2012/>

NEW QUESTION 94

DRAG DROP

You support desktop computers for a company named Fabrikam, Inc. The computers are members of the Active Directory domain named fabrikam.com. Fabrikam works with a supplier named Contoso, Ltd.

Each company has a public key infrastructure (PKI), and no public certificate authorities (CAs) are used. Fabrikam employees regularly use a Contoso website that is hosted on a server in the contoso.com domain.

The website requires SSL and mutual authentication.

You need to configure the computers to allow Fabrikam users to access the Contoso website without any warning prompts. You also need to use the fewest certificates possible.

Which certificate or certificates should you use?

Certificate	Certificate Store
contoso.com root certificate	trusted root authorities certificate store for the local computer account
Fabrikam root certificate	untrusted certificates store for the user's account
client (user) certificate issued by Contoso	personal certificate store for the local computer account
client (user) certificate issued by Fabrikam	personal certificate store for the user's account
no certificate required	

Answer:

Explanation:

Certificate	Certificate Store	
contoso.com root certificate	trusted root authorities certificate store for the local computer account	contoso.com root certificate
Fabrikam root certificate	untrusted certificates store for the user's account	no certificate required
client (user) certificate issued by Contoso	personal certificate store for the local computer account	no certificate required
client (user) certificate issued by Fabrikam	personal certificate store for the user's account	client (user) certificate issued by Contoso
no certificate required		

NEW QUESTION 98

DRAG DROP

A company has a main office located in Miami, and branch offices in Boston, Los Angeles and Portland. The Office Networks are configured as described in the following table.

City	Network
Boston	10.30.0.0/24
Los Angeles	10.40.0.0/24
Miami	10.10.0.0/16
Portland	10.20.0.0/16

A management computer in the main office, named COMPUTER1, runs windows 8 and several third-party management applications. You need to meet the following requirements:

- Ensure that only users in the Boston office can connect to COMPUTER1 by using http.
- Ensure that only users in the Los Angeles office can connect COMPUTER1 by using https
- Ensure that only users in the Portland office can connect to COMPUTER1 by using FTP.

You are configuring access to COMPUTER1. How should you configure windows firewall?

Source network	Answer Area																
10.10.0.0/16	<table border="1"> <thead> <tr> <th>Protocol</th> <th>Source Network</th> <th>Port Number</th> <th>IP Type</th> </tr> </thead> <tbody> <tr> <td>FTP</td> <td></td> <td></td> <td></td> </tr> <tr> <td>HTTP</td> <td></td> <td></td> <td></td> </tr> <tr> <td>HTTPS</td> <td></td> <td></td> <td></td> </tr> </tbody> </table>	Protocol	Source Network	Port Number	IP Type	FTP				HTTP				HTTPS			
Protocol	Source Network	Port Number	IP Type														
FTP																	
HTTP																	
HTTPS																	
10.20.0.0/16																	
10.30.0.0/24																	
10.40.0.0/24																	
Port number																	
21																	
22																	
80																	
443																	
IP type																	
TCP																	
UDP																	

Answer:

Explanation: * First Row: 10.20.0.0/16, 21, TCP

The Portland users, on network 10.20.0.0/16, need FTP, which uses TCP port 21.

* Second Row: 10.30.0.0/16, 80, TCP

The Boston users, on network 10.30.0.0/16, need HTTP, which uses TCP port 80.

*Third row: 10.40.0.0/16, 443, TCP

The Los Angeles users, on network 10.40.0.0/16, need HTTPS, which uses TCP port 443.

References: https://en.wikipedia.org/wiki/List_of_TCP_and_UDP_port_numbers

NEW QUESTION 100

DRAG DROP

You administer Windows 10 Enterprise computers. Your company has a team of technical writers that is preparing technical manuals and help files. The team manager wants to ensure that the technical writers are able to restore any documents that been modified within the last year.

You need to ensure that the technical writers can restore Microsoft Word files to any previous versions for up to one year.

Which three actions should you perform in sequence?

Actions	Answers
Create a network share, configure NTFS, and then share permissions.	
Turn on System Protection and create a restore point.	
Turn on File History.	
Configure the Keep Saved Versions setting	

Answer:

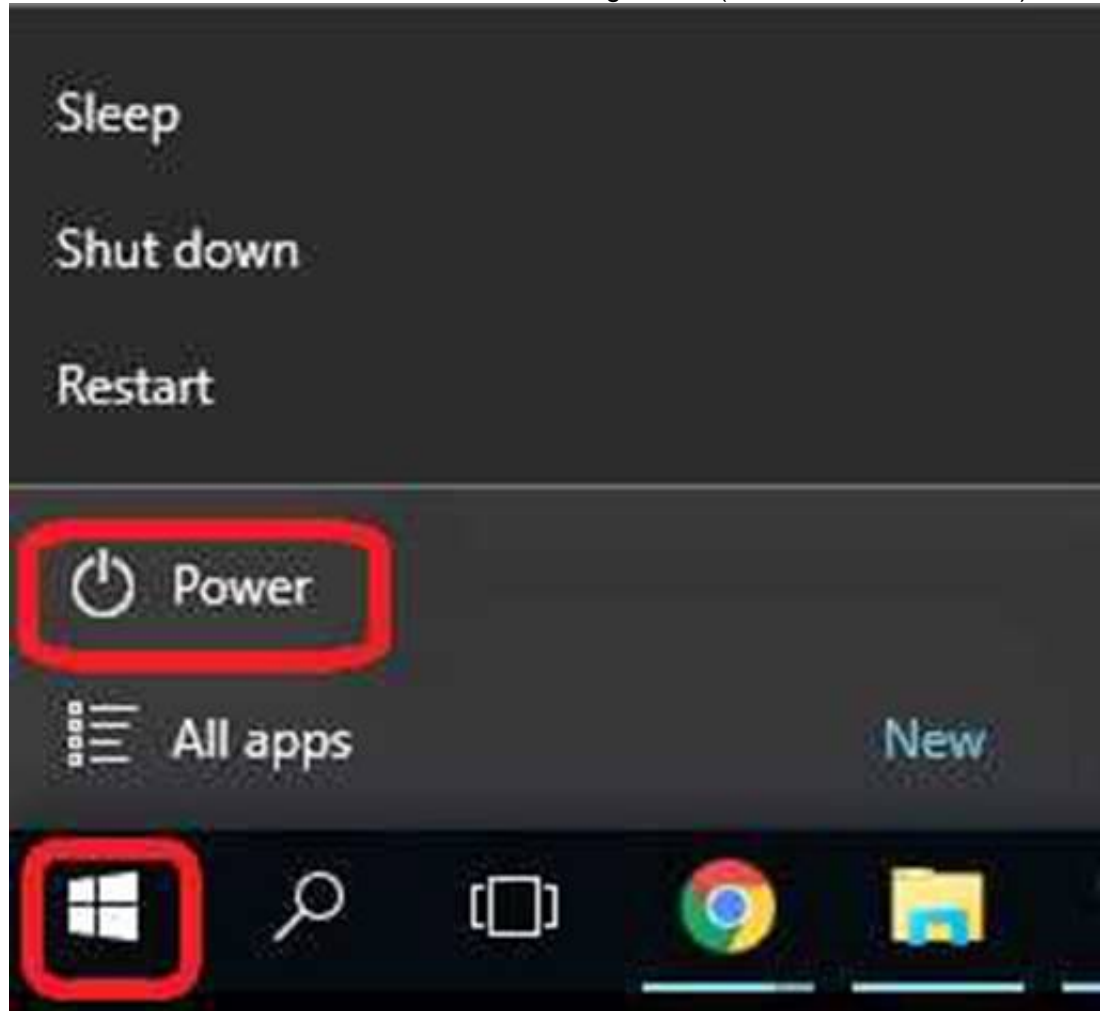
Explanation: We need a NTFS folder.

In the Advanced settings we can configure the Keep SavedVersions settings. Finally we turn on File History.

NEW QUESTION 102

DRAG DROP

You administer Windows 8 Pro computers in your company network. You discover that Sleep, Shut down and Restart are the only options available when you select the Power button as shown in the following exhibit (Click the Exhibit button.)



You need to enable hibernation on the computer.
Which three steps should you perform in sequence?

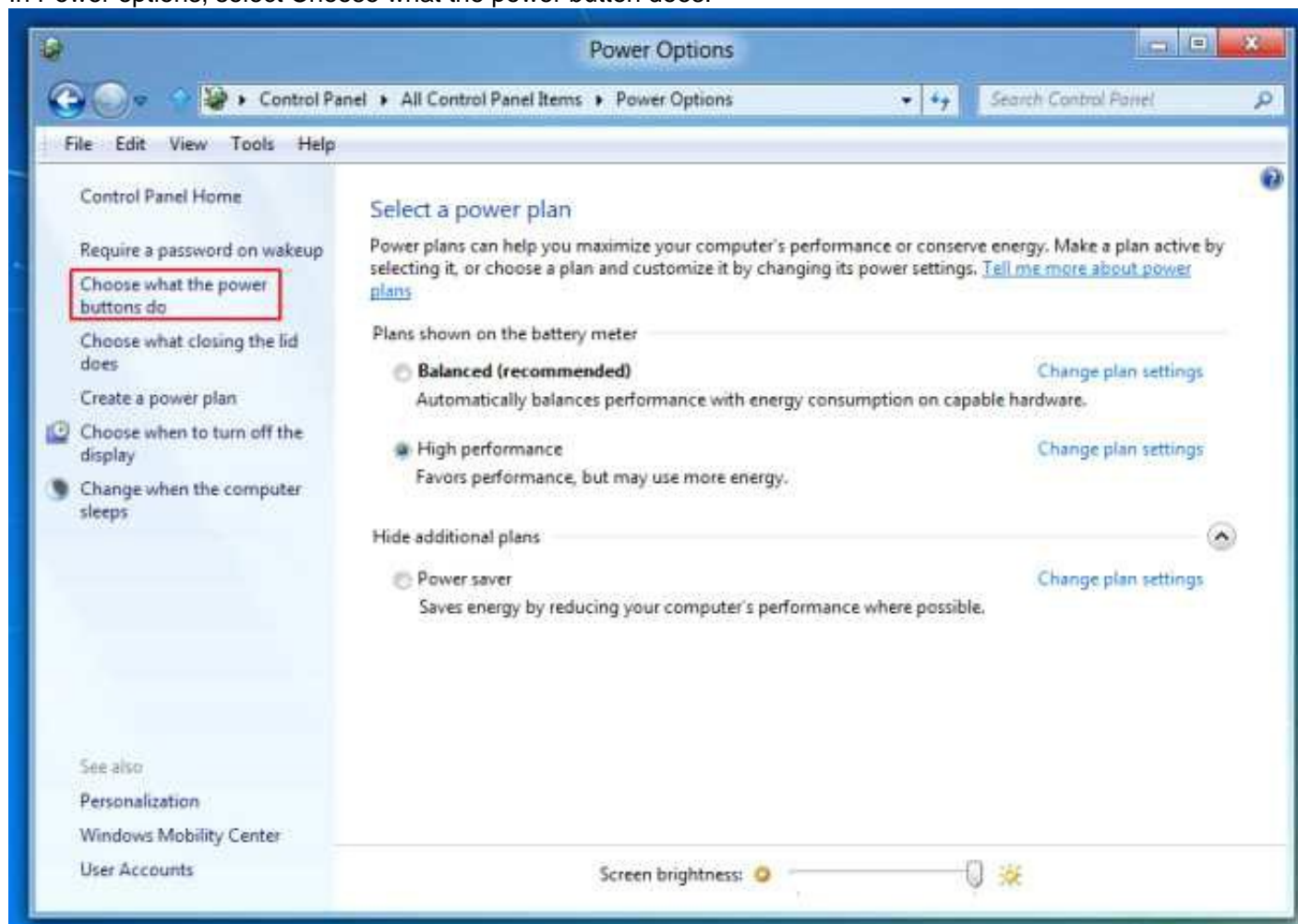
Actions	Answers
Change the When I press the power button menu settings.	
From the Charm Bar, open Change PC settings .	
Select Don't require a password	
Select What the power button does .	

Answer:

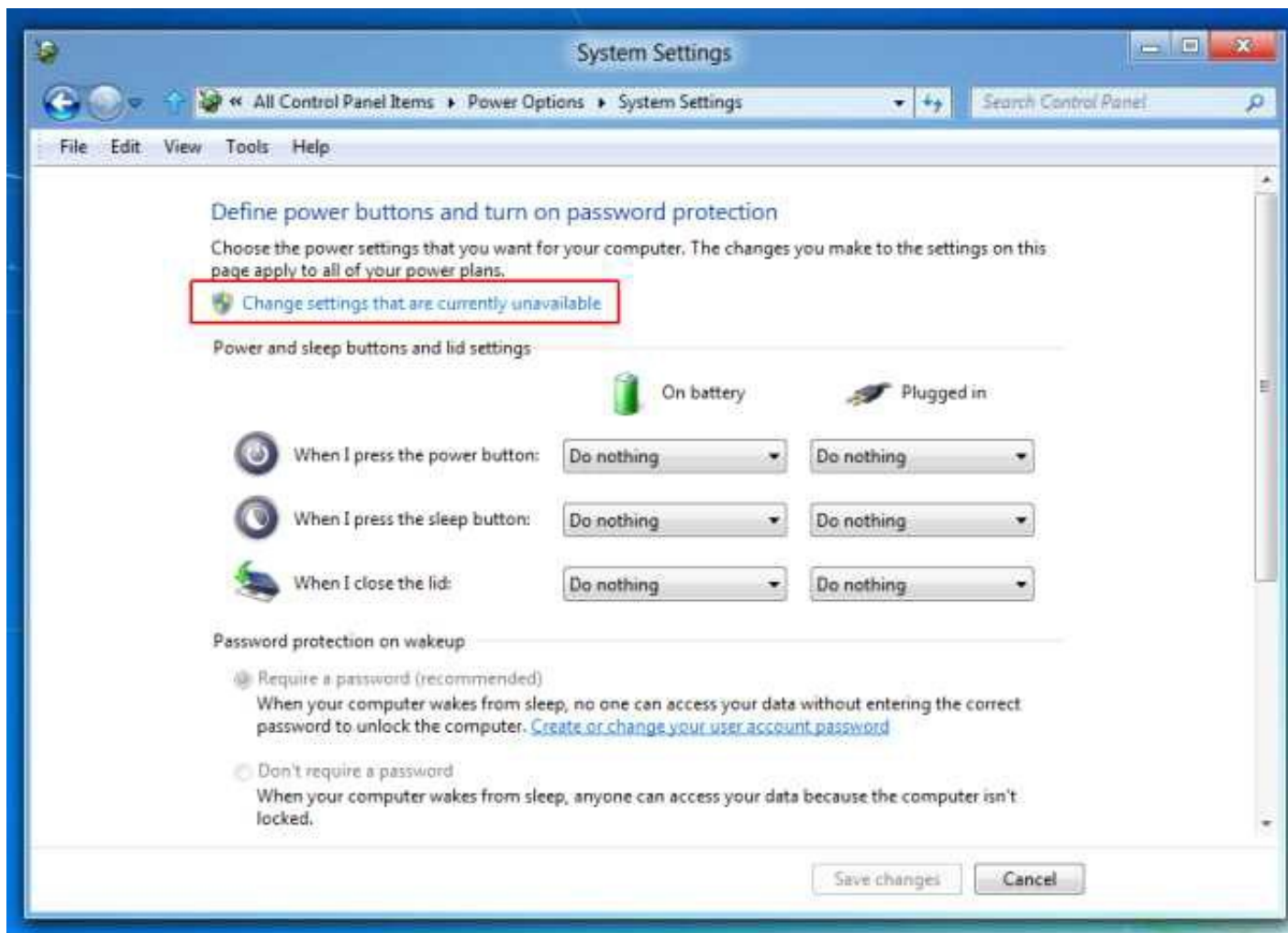
Explanation: Box 1: From the Charm Bar, open Change PC settings.
The Settings options of the Charm bar let you quickly tweak your computer's six major settings: WiFi/Network, Volume, Screen, Notifications, Power, and Keyboard/Language.



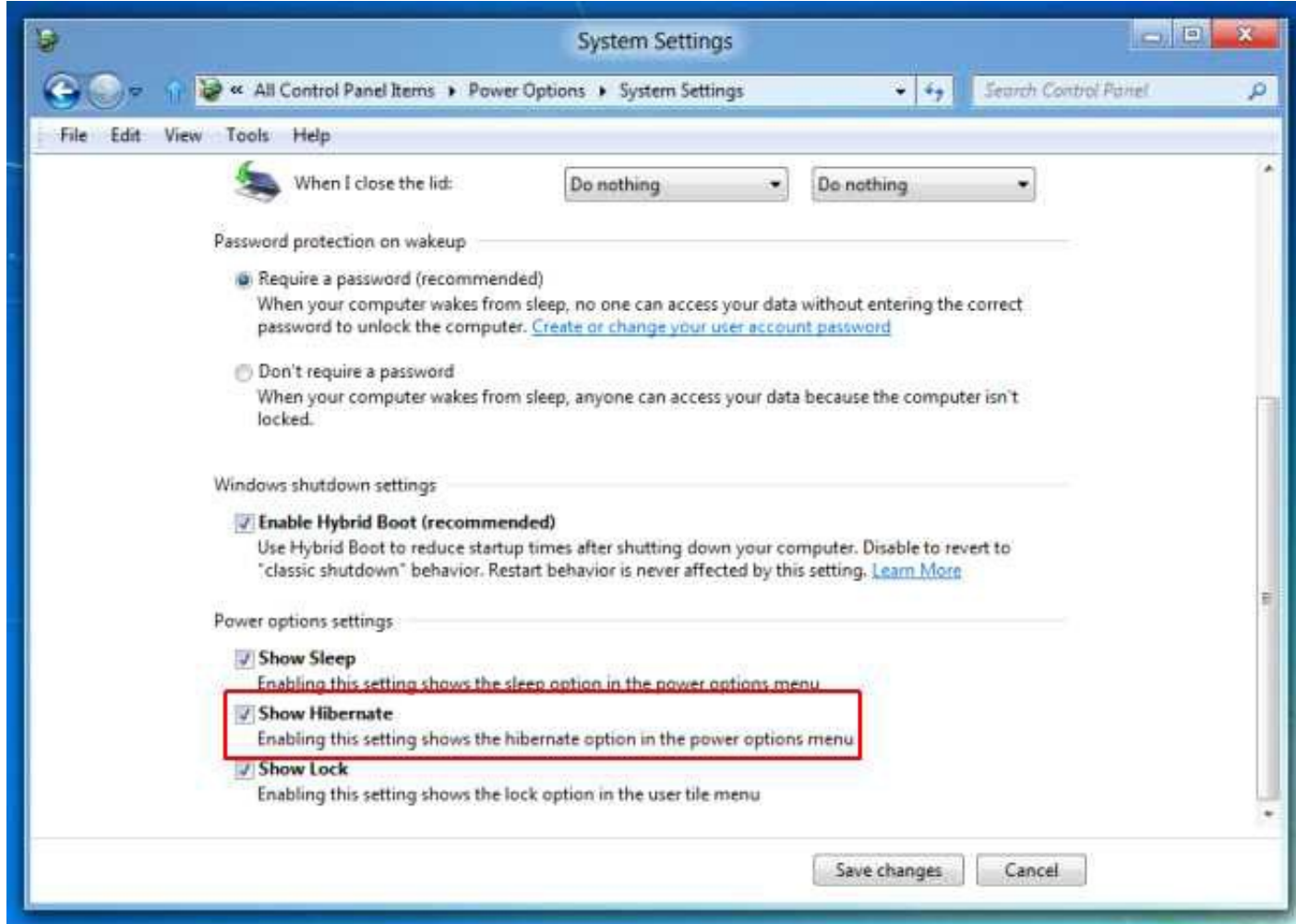
Box 2: Select What the power button does.
In Power options, select Choose what the power button does.



Box 3: Change the When I press the power button menu settings.
Now select the option that says "Change settings that are currently unavailable".



This will provide you with the option to enable Hibernation. Check Show Hibernation option to enable and click Save Changes.



References: <http://www.addictivetips.com/windows-tips/how-to-enable-windows-8- hibernate-option/>

NEW QUESTION 107

DRAG DROP

You administer 50 laptops that run Windows 7 Professional 32-bit. You want to install Windows 10 Enterprise 64-bit on every laptop. Users will keep their own laptops.

You need to ensure that user application settings, Windows settings, and user files are maintained after Windows 10 Enterprise is installed.

Which four actions should you perform in sequence?

	Answer Area
Run the Scanstate.exe c:\store / i:migdocs.xml /i:migapp.xml /v:13 /c / hardlink /nocompress command.	
Copy the User State Migration Tool (USMT) files and tools to the source computer.	
Run the Scanstate.exe c:\store / i:migdocs.xml /i:migapp.xml /v:13 / c command.	
Install Windows 8 Pro on the existing Windows partition with no formatting or repartitioning. Install standard operating environment applications.	
Run the Loadstate.exe c:\store / i:migdocs.xml /i:migapp.xml /v:13 /c / hardlink /nocompress command.	
Install Windows 8 Pro by deleting all existing partitions and creating a new one. Install standard operating environment applications.	

Answer:

Explanation: Box 1: First we copy the User State Migration Tool to the source computer. Box 2: Scanstatewith /nocompress
The ScanState command is usedwith the User State Migration Tool (USMT) 5.0 to scan the source computer, collect the files and settings, and create a store. We use the /nocompress option as the only available loadstate option, in step 4, uses /nocompress.
Box 3: Delete old partitions, and install windows 8 on a new partition.
After you create a migration store on a server, you will install Windows 8 and load the files and settings from that migration store onto the destination computer. You can reformat the source computer (PC refresh) and use it as your destination computer, or you can use an additional computer (PC replacement).
Box 4: Loadstate
To apply migrated data to your hard drives, you connect the computer to your network, install USMT (this step is missing in this question),and then run LoadState.
References: <https://technet.microsoft.com/en-us/library/hh824873.aspx>

NEW QUESTION 111

DRAG DROP

You administer desktop computers that run Windows 8 Enterprise and are members of an Active Directory domain.
A new security policy states that all traffic between computers in the research department must be encrypted and authenticated by using Kerberos V5. You need to configure the requested traffic authentication settings by using Windows Firewall with Advanced Settings.
Which three actions should you perform in sequence?

	Answer Area
Select Require authentication for inbound and outbound connection , and then for authentication method, select Computer (Kerberos V5) .	
Select Allow on app or feature through Windows Firewall .	
Click to expand Inbound Rule , and then select New Rule .	
Select the rule type Isolation , and then add the IP addresses of the research department computers.	
Click to expand Outbound Rule , and then select New Rule .	
Click to expand Connection Security Rule , and then select New Rule .	
Select the rule type Server-to-Server , and then add the IP addresses of the research department computers.	

Answer:

Explanation: (Step 1) In the Windows Firewall with Advanced Security MMC snap-in, right-click Connection Security Rules, and then click New Rule.
 (Step 2) On the Rule Type page, click Isolation, and then click Next. (The Kerberos option in step 4 below is available only when you specify an Isolation or Custom rule type.)
 On the Requirements page, confirm that Request authentication for inbound and outbound connections selected, and then click Next.
 (Step 3) On the Authentication Method page, click Computer and user (Kerberos V5), and then click Next.
 On the Profile page, clear the Private and Public check boxes, and then click Next. On the Name page, type Request Inbound Request Outbound, and then click Finish.

NEW QUESTION 112

DRAG DROP

You administer computers that run Windows 10 Enterprise. The computers on your network are produced by various manufacturers and often require custom drivers. You need to design a recovery solution that allows the repair of any of the computers by using a Windows Recovery Environment (WinRE). In which order should you perform the actions? To answer, move all actions from the list of actions to the answer area and arrange them in the correct order.

	Answer Area
Create a bootable WinRE Recovery media.	
Extract WinRE files from the Windows Assessment and Deployment Kit (ADK).	
Unmount the image file.	
Add additional drivers.	
Mount the WinRE image file.	
Commit the changes.	

Answer:

Explanation: The Windows Assessment and Deployment Kit (Windows ADK) is a collection of tools and documentation that you can use to customize, assess, and deploy Windows operating systems to new computers.

Walkthrough: Create a Custom Windows PE Image

References: [https://technet.microsoft.com/en-us/library/cc709665\(v=ws.10\).aspx](https://technet.microsoft.com/en-us/library/cc709665(v=ws.10).aspx)

NEW QUESTION 114

DRAG DROP

A local printer named PRINTER1 is shared from a client computer named COMPUTER1 that run a 32-bit version of Windows 10. A workgroup contains client computers that run a 64-bit version of Windows 10.

Computers in the workgroup can't currently print to PRINTER1.

You need to ensure that the workgroup computers can print to PRINTER1.

Which three actions should you perform in sequence? To answer, move the appropriate actions to the answer area and arrange them in the correct order.

Connect the workgroup computers to PRINTER1.
Add the driver on COMPUTER1.
Obtain the 32-bit driver for PRINTER1.
Obtain the 64-bit driver for PRINTER1.
Install the driver on one computer in the workgroup.

Answer:

Explanation: You can very well add a 64-bit printer driver to a local printer on a 32-bit Windows operating system. After the 64-bit driver has been added connect the 64-bit Windows 10 computers to the printer.

NEW QUESTION 115

Your network contains an Active Directory domain. The domain contains 100 computers that run Windows 10. Your company is developing a line-of-business application. You plan to deploy the application by using Windows Store for Business. You need to ensure that a developer can publish the application to the Windows Store for Business. What should you do first?

- A. Provision a Windows Dev Center dev account for the developer.
- B. Assign the Windows Store Purchaser role to the developer.
- C. Assign the Windows Store Admin role to the developer.
- D. Provision a Microsoft Azure Active Directory (Azure AD) account for the developer.
- E. Provision a Microsoft account for the developer.

Answer: D

NEW QUESTION 116

DRAG DROP

You have a computer that runs Windows 10. You need to meet the following requirements:

?Users must use complex passwords.

?Users must change their password every 180 days.

?Users must be prompted to change their password seven days before the password expires.

Which policy setting should you configure for each requirement? To answer, drag the appropriate policy settings to the correct requirements. Each policy setting may be used once, more than once, or not at all. You may need to drag the split bar between panes or scroll to view content.

Answer Area

Account Lockout Policy	Users must change their password every 180 days:	Policy Setting
Audit Policy	Users must use complex passwords:	Policy Setting
Password Policy	Users must be prompted to change their password seven days before the password expires:	Policy Setting
Security Options		
User Rights Assignment		

Answer:

Explanation: References: [https://technet.microsoft.com/en-us/library/jj852243\(v=ws.11\).aspx](https://technet.microsoft.com/en-us/library/jj852243(v=ws.11).aspx)

NEW QUESTION 121

A company has 100 Windows 10 Enterprise client computers. The client computers are members of a workgroup.

A custom application requires a Windows Firewall exception on each client computer.

You need to configure the exception on the client computers without affecting existing firewall settings.

Which Windows PowerShell cmdlet should you run on each client computer?

- A. Set-NetFirewallRule
- B. New-NetFirewallRule
- C. New-NetIPSecMairModeRule
- D. Set-NetFirewallProfile
- E. Set-NetFirewallSetting

Answer: B

Explanation: References: <https://technet.microsoft.com/en-us/library/jj554908.aspx>

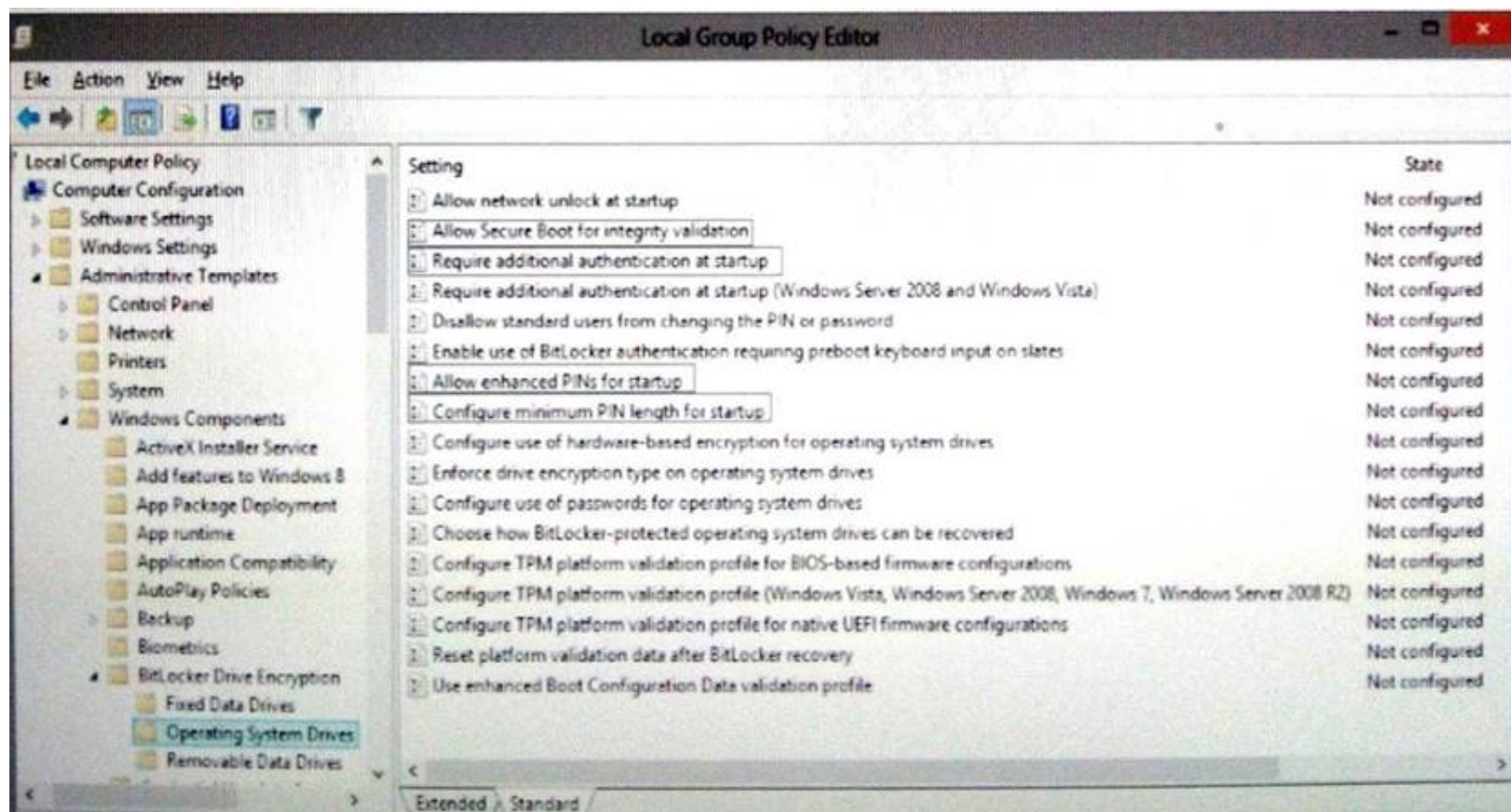
NEW QUESTION 126

HOTSPOT

You administer Windows 10 Enterprise computers in your company network. All computers include Windows 10 Enterprise compatible Trusted Platform Module (TPM).

You configure a computer that will run a credit card processing application.

You need to ensure that the computer requires a user to enter a PIN code when starting the computer.



Answer:

Explanation: Require additional authentication at startup"

References: <http://www.howtogeek.com/192894/how-to-set-up-bitlocker-encryption-on-windows/>

NEW QUESTION 131

You have a Microsoft Intune subscription.

You need to uninstall the Intune agent from a computer. What should you do?

- A. From the Groups node in the Microsoft Intune administration portal, click Delete.
- B. From the computer, run the provisioningutil.exe command.
- C. From the computer, run the clui.exe command.
- D. From the computer, use Programs and Features in Control Panel.

Answer: B

Explanation: Answer A is close but incorrect. You would need to select Retire/Wipe, not Delete. References: <https://www.petervanderwoude.nl/post/uninstall-the-microsoft-intune-client/>

NEW QUESTION 132

DRAG DROP

You have a Microsoft Intune subscription.

You need to identify devices based on the following requirements:

?Devices that are jailbroken or rooted

?Devices that are remote wiped or deleted.

?Devices that have blacklisted applications installed.

Which type of report should you use for each requirement? To answer, drag the appropriate reports to the correct requirements. Each report may be used once, more than once, or not at all. You may need to drag the split bar between panes or scroll to view content.

Answer Area

Computer Inventory	Devices that are jailbroken or rooted:	Report
Detected Software	Devices that have blacklisted applications installed:	Report
Device History	Devices that are remote wiped or deleted:	Report
Mobile Device Inventory		
Noncompliant Apps		
Update		

Answer:

Explanation: References: <https://docs.microsoft.com/en-us/intune/deploy-use/understand-microsoft-intune-operations-by-using-reports>

NEW QUESTION 133

You support Windows 10 Enterprise laptops. Microsoft BitLocker Administration and Monitoring (MBAM) is deployed on your network on a server named SERVER1. Company policy requires that laptops with MBAM client installed prompt users to enable BitLocker within 2 hours of being started. You need to make changes to the Configure MBAM Services Group Policy settings. Which two actions should you perform? Each correct answer presents part of the solution.

- A. Set Select BitLocker Recovery Information to store to Recovery password only.
- B. Set Select BitLocker Recovery Information to store to Recovery password and key package.
- C. Set Enter status reporting frequency (in minutes) to 120.
- D. Set MBAM Status reporting endpoint to SERVER1.
- E. Set MBAM Recovery and Hardware service endpoint to SERVER1.
- F. Set Enter client checking status frequency (in minutes) to 120.

Answer: EF

Explanation: References: http://www.projectleadership.net/blogs_details.php?id=3519

NEW QUESTION 135

Note: This question is part of a series of questions that use the same or similar answer choices. An answer choice may be correct for more than one question in the series. Each question is independent of the other questions in this series. Information and details provided in a question apply only to that question. You have a computer that runs Windows 10 and is used by 10 users. The computer is joined to an Active Directory domain. All of the users are members of the Administrators group. Each user has an Active Directory account. You have a Microsoft Word document that contains confidential information. You need to ensure that you are the only user who can open the document. What should you configure?

- A. account policies
- B. application control policies
- C. HomeGroup settings
- D. software restriction policies
- E. NTFS permissions
- F. Microsoft OneDrive
- G. share permissions
- H. Encrypting File System (EFS) settings

Answer: H

NEW QUESTION 137

Note: This question is part of a series of questions that use the same or similar answer choices. An answer choice may be correct for more than one question in

the series. Each question is independent of the other questions in this series. Information and details provided in a question apply only to that question.

A user successfully accesses \\server1\Sources\App1\. The user cannot access \\server1\Sources\App2\.

You need to ensure that the user can access \\server1\Sources\App2\. What should you configure?

- A. Microsoft OneDrive
- B. share permissions
- C. account policies
- D. software restriction policies
- E. HomeGroup settings
- F. application control policies
- G. NTFS permissions
- H. Encrypting File System (EFS) settings

Answer: G

NEW QUESTION 139

Note: This question is part of a series of questions that use the same or similar answer choices. An answer choice may be correct for more than one question in the series. Each question is independent of the other questions in this series.

Information and details provided in a question apply only to that question.

You have a computer that runs Windows 10 and is used by 10 users. The computer is joined to an Active Directory domain. Each user has an Active Directory account. You need to ensure that all of the users can access the files located in one another's libraries.

What should you configure?

- A. Microsoft OneDrive
- B. HomeGroup settings
- C. Encrypting File System (EFS) settings
- D. NTFS permissions
- E. Account policies
- F. Share permissions
- G. Software restriction policies
- H. Application control policies

Answer: D

NEW QUESTION 140

HOTSPOT

You have an Active Directory domain. All of the client computers in the domain run Windows 10 Enterprise.

You need to configure the client computers to download updates from a Windows Server Update Service server.

Which two settings should you configure? To answer, select the appropriate settings in the answer area.

Setting	State	Comment
<input checked="" type="checkbox"/> Configure Automatic Updates	Not configured	No
<input checked="" type="checkbox"/> Defer Upgrade	Not configured	No
<input checked="" type="checkbox"/> Delay Restart for scheduled installations	Not configured	No
<input checked="" type="checkbox"/> Do not adjust default option to 'Install Updates and Shut Do...	Not configured	No
<input checked="" type="checkbox"/> Do not connect to any Windows Update Internet locations	Not configured	No
<input checked="" type="checkbox"/> Do not display 'Install Updates and Shut Down' option in Sh...	Not configured	No
<input checked="" type="checkbox"/> Enable client-side targeting	Not configured	No
<input checked="" type="checkbox"/> Enabling Windows Update Power Management to automati...	Not configured	No
<input checked="" type="checkbox"/> No auto-restart with logged on users for scheduled automat...	Not configured	No
<input checked="" type="checkbox"/> Re-prompt for restart with scheduled installations	Not configured	No
<input checked="" type="checkbox"/> Reschedule Automatic Updates scheduled installations	Not configured	No
<input checked="" type="checkbox"/> Specify intranet Microsoft update service location	Not configured	No
<input checked="" type="checkbox"/> Turn on recommended updates via Automatic Updates	Not configured	No

Answer:

Explanation: Configure Automatic Updates

Specify intranet Microsoft update service location

NEW QUESTION 142

You are configuring two Windows 10 Enterprise client computers:

A desktop computer named COMPUTER1 and a portable computer named COMPUTER2.

You have the following requirements:

?Store all personal data in a folder named Data on COMPUTER1.
?Ensure that you can access all personal data from COMPUTER2, even when a network connection is unavailable.
?Synchronize personal data between the computers twice a day. You need to configure the computers to meet the requirements.
Which two actions should you perform? Each correct answer presents part of the solution.

- A. From COMPUE2, connect to COMPUTER1 and configure the Data folder to always be available offline.
- B. From COMPUTER1, connect to COMPUTER2 and configure the Data folder to always be available offline.
- C. In Sync Center, configure a schedule for offline files.
- D. From COMPUTER2, map a network drive to the Data folder onCOMPUTER1.
- E. In Sync Center, set up a new sync partnership.

Answer: CE

NEW QUESTION 145

A company has an Active Directory Domain Services (AD DS) domain. All client computers run Windows 10 Enterprise and joined to the domain. You have the following requirements:
?Ensure that files in shared network folders are available offline.
?Maximize efficiency for users who connect to shared network folders from a mobile device
You need to configure Group Policy settings to meet the requirements. What should you do first?

- A. Enable the Enable file synchronization on costed networks policy setting.
- B. Enable the Synchronize all offline files when logging on policy settings.
- C. Enable and configure the Configure slow-link mode policy setting.
- D. Enable and configure the Specify administratively assigned Offline Files policy setting.

Answer: C

Explanation: References: <https://technet.microsoft.com/en-us/library/hh968298.aspx>

NEW QUESTION 150

You create a VPN connection that has the VPN type set to Automatic.
When attempting to establish a VPN connection, which VPN protocol will be used first?

- A. PPTP
- B. L2TP
- C. SSTP
- D. IKEv2

Answer: D

Explanation: References: <https://blogs.technet.microsoft.com/networking/2014/01/13/configuring-native-vpn-client-through-pc-settings/>

NEW QUESTION 151

Your company has a standard power scheme for the sales team. You are replacing a laptop for a sales associate. You import the power scheme onto the new laptop. You need to apply the power scheme. What should you do?

- A. Modify the power scheme under Power and Sleep settings.
- B. Run the gpupdate /F command.
- C. Run the powercfg /S command.
- D. Modify the advanced power settings.

Answer: C

NEW QUESTION 155

You manage a client Windows 10 Enterprise computer named Computer1. You have a OneDrive synchronized folder that contains .pdf files. You need to ensure that you can restore previous versions of the .pdf files. What should you do?

- A. Enable File History.
- B. Configure System Restore.
- C. Configure Computer1 as a trusted PC.
- D. Enable Sync your settings on Computer1.

Answer: A

NEW QUESTION 157

You have a laptop that is a member of a workgroup. The laptop does not have a Trusted Platform Module (TPM) chip. You plan to enable BitLocker Drive Encryption (BitLocker) for the operating system drive. What are two methods that you can use to unlock the drive when the laptop restarts? Each correct answer presents a complete solution.

- A. a password
- B. a Near Field Communication (NFC)-enabled portable device
- C. a USB drive
- D. a user account

E. Network Unlock

Answer: C

Explanation: References: <http://www.howtogeek.com/howto/6229/how-to-use-bitlocker-on-drives-without-tpm/>

NEW QUESTION 162

You administer Windows 10 Enterprise client computers that are members of an Active Directory domain that includes Active Directory Certificate Services (AD CS). You restored a computer from a backup that was taken 45 days ago. Users are no longer able to log on to that computer by using their domain accounts. An error message states that the trust relationship between the computer and the primary domain has failed. What should you do?

- A. Renew the certificates issued to the client computer.
- B. Reset the passwords of all affected domain users.
- C. Logon as a local administrator and issue the netdom resetpwd command.
- D. Log off and restart the computer.
- E. Restore the client computer from a known good backup that was taken two weeks earlier than the backup you previously restored.

Answer: C

Explanation: References: <http://theitbros.com/fix-trust-relationship-failed-without-domain-rejoining/>

NEW QUESTION 164

DRAG DROP

You have a computer named Client1 that runs Windows 10 Enterprise. Client1 is a member of an Active Directory domain.

A domain administrator provisions a certificate template for a virtual smart card logon.

In the BIOS of Client1, you enable the Trusted Platform Module (TPM). You need to enable the virtual smartcard logon on Client1.

Which three actions should you perform in sequence? To answer, move the appropriate actions from the list of actions to the answer area and arrange them in the correct order.

Actions

Run the `tpmvscmgr.exe` command.

Use the Certificate Enrollment wizard.

Run the `vaultcmd.exe` command.

Run the `tpmunit.exe` command.

Run the `certmgr.exe` command

Answer Area



Answer:

Explanation: Run the tpmunit.exe command.

Run the tpmvscmgr.exe command. Use the Certificate Enrollment wizard.

References: [https://technet.microsoft.com/en-us/library/cc753140\(v=ws.11\).aspx](https://technet.microsoft.com/en-us/library/cc753140(v=ws.11).aspx)

<http://ss64.com/nt/run.html>

[https://technet.microsoft.com/en-us/library/cc730689\(v=ws.11\).aspx](https://technet.microsoft.com/en-us/library/cc730689(v=ws.11).aspx)

NEW QUESTION 167

You have a laptop that has connections for three WiFi network named WiFi1, WiFi2, and WiFi 3.

You need to ensure that the laptop connects to WiFi1 when multiple WiFi1 networks are available.

What should you do?

- A. From Netsh, configure the WLAN context.
- B. From Network Connections in Control Panel, modify the bindings for the WiFi.
- C. From the Windows Settings app, configure the Wi-Fi Sense settings.
- D. From Network Connections in Control Panel, modify the network provider order.

Answer: D

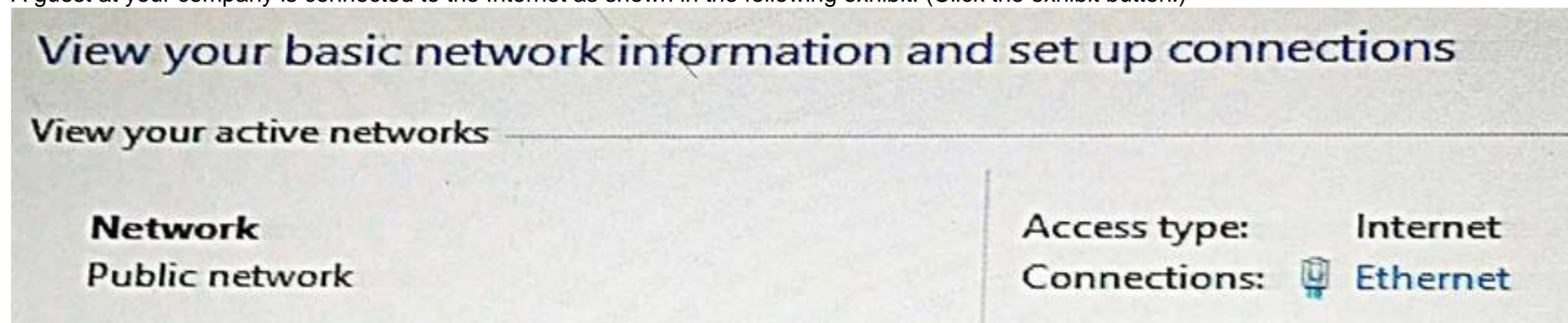
Explanation: References:

<http://www.quepublishing.com/articles/article.aspx?p=2455390&seqNum=3>

NEW QUESTION 170

You administer Windows 10 Enterprise client computers in your company network.

A guest at your company is connected to the Internet as shown in the following exhibit. (Click the exhibit button.)



You need to ensure that the guest user is able to share network resources over Wi-Fi without lowering the overall security of the computer. What should you do?

- A. Configure File and printer sharing settings for Public networks.
- B. Change the network location type to Private.
- C. Change the network location type to Work.
- D. Configure File sharing connections settings for All networks.

Answer: D

Explanation: References: http://www.isunshare.com/windows-10/turn-off-or-on-password-protected-sharing-in-windows-10.html#_blank

NEW QUESTION 175

You have a Remote Desktop Session Host (RD Session Host) server. The server is accessible from the internal network.

To access the server remotely, you must connect to a Remote Desktop Gateway (RD Gateway) server.

On a laptop, you successfully configure a Remote Desktop connection that you use to access the RD Session Host server from the internal network.

From your home, you attempt to connect to the RD Session Host server by using the Remote Desktop connection, but the connection fails.

You need to connect to the RD Session Host server. What should you configure on the laptop?

- A. the Remote Assistance settings in System Properties.
- B. the Connect from anywhere settings in Remote Desktop Connection.
- C. the Performance settings in Remote Desktop Connection.
- D. the Remote Desktop settings in System Properties.

Answer: B

Explanation: References: [https://technet.microsoft.com/en-us/library/cc770601\(v=ws.11\).aspx](https://technet.microsoft.com/en-us/library/cc770601(v=ws.11).aspx)

NEW QUESTION 178

HOTSPOT

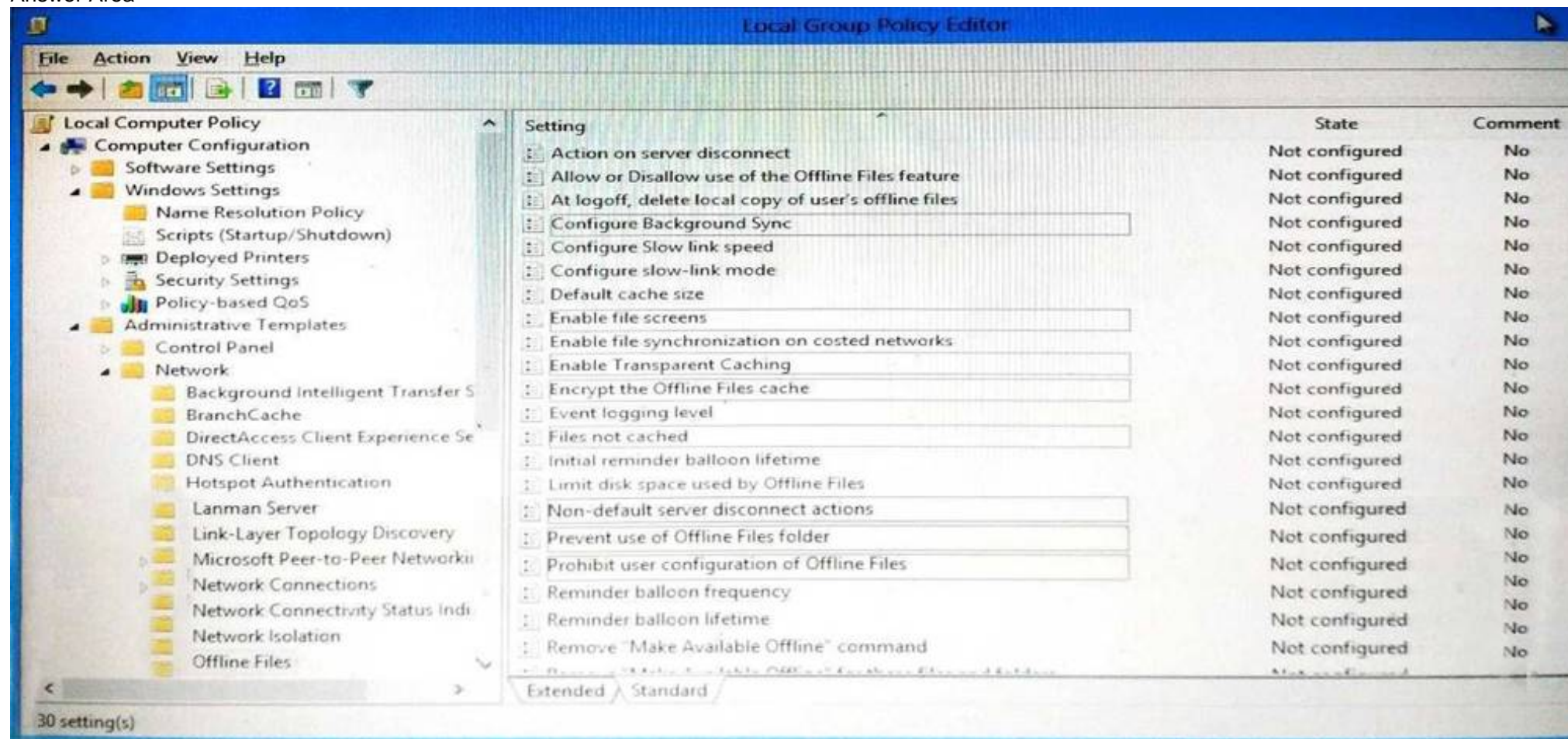
You install Windows 10 Enterprise on a new laptop that will be shipped to a remote user. You logon to the laptop with the user credentials, map network drives, and configure the network drives to be always available offline.

Company policy requires that files with a .db1 extension should be excluded from offline file synchronization.

You need to prevent the user from creating files with a .db1 extension on the mapped drives.

In the Local Group Policy Editor, which setting should you configure? To answer, select the appropriate setting in the answer area.

Answer Area



Answer:

Explanation: Enable file screens.

References: <https://www.windows-security.org/1941654bad9040dfcb8ffaba2724b014/enable-file-screens>

NEW QUESTION 179

You have a computer named Computer1 that runs Windows 10 Enterprise. You install a Universal app named App1 on Computer1. You discover that an update for App1 is available. You need to install the update as soon as possible. What should you do?

- A. Log off and log on to the Computer1.
- B. From the Windows Update settings, modify the Choose how updates are delivered setting.
- C. From the Windows Update settings, modify the Choose how updates are installed setting.
- D. From the Windows Update settings, click Check for updates.

Answer: A

Explanation: References: <http://www.howtogeek.com/223068/what-you-need-to-know-about-windows-update-on-windows-10/>

NEW QUESTION 182

A company has Windows 10 Enterprise client computers. A client computer named COMPUTER1 has a shared folder named Folder1 located in the user's Downloads folder. Folder1 is shared only with employees in the Marketing department. All Marketing employees can connect to Folder1 from their client computers.

A Marketing employee is unable to connect to Folder1 from a legacy device that is not compatible with the Windows 10 Enterprise default sharing settings. The device is able to connect to resources on other client computers.

You need to configure COMPUTER1 to allow the device to connect to Folder1. Which setting should you enable?

- A. Enable file sharing for devices that use 40- or 56-bit encryption
- B. Turn off password protected sharing
- C. Use 128-bit encryption to help protect file sharing connections
- D. Turn off network discovery
- E. Turn on sharing so anyone with network access can read and write files in the Public folders.

Answer: A

Explanation: References: <http://www.tenforums.com/tutorials/51024-file-sharing-encryption-level-change-windows-10-a.html>

NEW QUESTION 183

Note: This question is part of a series of questions that use the same or similar answer choices. An answer choice may be correct for more than one question in the series. Each question is independent of the other questions in this series. Information and details in a question apply only to that question.

On the corporate network, you have an Active Directory user account. The domain contains a sync share named Share1.

You have a personal computer that runs Windows 10. The computer is a member of a workgroup.

You need to access the files in Share1.

Which Control Panel application should you use?

- A. Phone and Modem
- B. Network and Sharing Center
- C. RemoteApp and Desktop Connections
- D. Power Options
- E. System
- F. Sync Center
- G. Credential Manager
- H. Work Folders

Answer: F

Explanation: References: <http://www.thewindowsclub.com/windows-10-sync-center>

NEW QUESTION 188

Note: This question is part of a series of questions that use the same or similar answer choices. An answer choice may be correct for more than one question in the series. Each question is independent of the other questions in this series. Information and details in a question apply only to that question.

Your network contains a shared folder that is located at \\server1\data.

On a computer, you make the shared folder available for offline use.

You need to ensure that you have the most up-to-date version of the folder cached. Which Control Panel application should you use?

- A. Credential Manager
- B. Phone and Modem
- C. Work Folders
- D. System
- E. RemoteApp and DesktopConnections
- F. Network and Sharing Center
- G. Sync Center
- H. Power Options

Answer: C

NEW QUESTION 191

Note: This question is part of a series of questions that use the same or similar answer choices. An answer choice may be correct for more than one question in the series. Each question is independent of the other questions in this series. Information and details in a question apply only to that question.

You make a folder available for offline use.

Currently, the folder is synchronizing and will take approximately 15 minutes to complete.

You need to ensure that the files continue to synchronize when you close the lid of the computer.

Which Control Panel application should you use?

- A. System
- B. RemoteApp and Desktop Connections
- C. Work Folders
- D. Power Options
- E. Network and Sharing Center
- F. Credential Manager
- G. Phone and Modem
- H. Sync Center

Answer: D

NEW QUESTION 192

DRAG DROP

You are a desktop support technician for your company. You support more than 100 Windows 8 and Windows 10 Enterprise desktop computers.

You are preparing an installation image of a Windows 10 Enterprise computer by using the Deployment and Imaging Tools Environment command prompt on your own computer. The image includes a customized instance of the Windows Recovery Environment (Windows RE).

You need to extract and mount the Windows RE image.

Which three actions should you perform in sequence? To answer, move the appropriate three actions from the list of actions to the answer area and arrange them in the correct order.

Actions

- Register the Windows RE location in the Windows registry.
- Mount the install.wim file by running the **dism /mount image** command.
- Mount the winre.wim file by running the **dism /mount -image** command.
- Create a mount.ini file to specify the image file and mount point.
- Copy the Windows image file from the Windows product DVD to a local drive.

Answer Area



Answer:

Explanation:

Actions

Register the Windows RE location in the Windows registry.

Mount the install.wim file by running the **dism /mount image** command.

Mount the winre.wim file by running the **dism /mount -image** command.

Create a mount.ini file to specify the image file and mount point.

Copy the Windows image file from the Windows product DVD to a local drive.

Answer Area

Copy the Windows image file from the Windows product DVD to a local drive.

Mount the install.wim file by running the **dism /mount image** command.



Mount the winre.wim file by running the **dism /mount -image** command.



NEW QUESTION 194

DRAG DROP

Ten client computers run Windows 7 and a custom application. The custom application is compatible with Windows 10 Enterprise.

You purchase 10 new computers that have Windows 10 Enterprise pre-installed. You plan to migrate user settings and data from the Windows 7 computers to the Windows 10 Enterprise computers. You add the User State Migration Toolkit (USMT) on a USB flash drive.

You need to ensure that the custom application settings are applied to the Windows 10 Enterprise computers after the migration is complete.

Which three actions should you perform in sequence? To answer, move the appropriate actions from the list of actions to the answer area and arrange them in the correct order.

Actions

Run the **scanstate** command on the Windows 7 computers.

Run the **loadstate** command on the Windows 10 Enterprise computers.

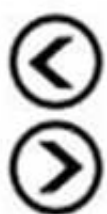
Uninstall the custom application from the Windows 7 computers.

Run the **loadstate** command on the Windows 7 computers.

Install the custom application on the Windows 10 Enterprise computers.

Run the **scanstate** command on the Windows 10 Enterprise computers.

Answer Area



Answer:

Explanation:

Actions

Run the **scanstate** command on the Windows 7 computers.

Run the **loadstate** command on the Windows 10 Enterprise computers.

Uninstall the custom application from the Windows 7 computers.

Run the **loadstate** command on the Windows 7 computers.

Install the custom application on the Windows 10 Enterprise computers.

Run the **scanstate** command on the Windows 10 Enterprise computers.

Answer Area

Run the **scanstate** command on the Windows 7 computers.

Install the custom application on the Windows 10 Enterprise computers.



Run the **loadstate** command on the Windows 10 Enterprise computers.



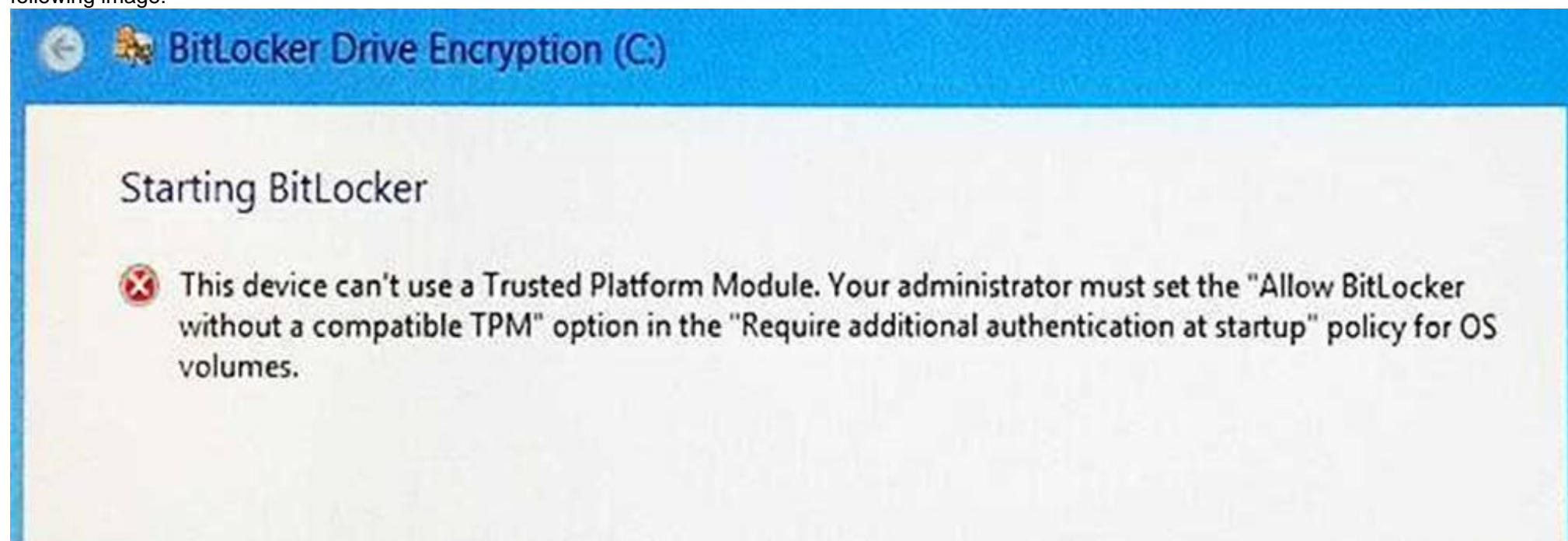
NEW QUESTION 199

HOTSPOT

You are the PC support specialist for Contoso, Ltd.

Your department upgrades your company's laptops to Windows 10 Enterprise.

You need to use BitLocker to encrypt the system drives on these laptops. You attempt to encrypt several laptops but receive an error message shown in the following image:



Use the drop-down menus to select the answer choice that completes each statement.

Note: Each correct selection is worth one point.

Answer Area

In order to encrypt your system drive with BitLocker, set the BitLocker Startup Preferences to **[answer choice]**.

	▼
Use BitLocker without additional key	
Require a PIN at every startup.	
Require a Startup key at every startup.	

Once the drive is encrypted, **[answer choice]** each time you boot the computer.

	▼
type a PIN when prompted.	
insert a USB drive with the saved	
select Automatic Unlock at prompt	

Answer:

Explanation:

Answer Area

In order to encrypt your system drive with BitLocker, set the BitLocker Startup Preferences to **[answer choice]**.

	▼
Use BitLocker without additional key	
Require a PIN at every startup.	
Require a Startup key at every startup.	

Once the drive is encrypted, **[answer choice]** each time you boot the computer.

	▼
type a PIN when prompted.	
insert a USB drive with the saved	
select Automatic Unlock at prompt	

NEW QUESTION 201

DRAG DROP

You administer Windows 7 and Windows 8 client computers in your company network.

You add 100 new client computers that have Windows 10 Enterprise installed.

You need to migrate user profiles, local groups membership, and network mapped drives to the new client computers. You download and copy User State Migration Tool (USMT) files to a network share.

Which three actions should you perform next, in sequence? To answer, move the appropriate three actions from the list of actions to the answer area and arrange them in the correct order.

Actions

Run the LoadState tool on the Windows 10 Enterprise computers.

Run the System Preparation (Sysprep) tool on the Windows 7 and Windows 8 computers.

Run the System Preparation (Sysprep) tool on the Windows 10 Enterprise computers.

Modify the custom.ini file.

Run the ScanState tool on the Windows 7 and Windows 8 computers.

Modify the custom.xml file.

Answer Area



Answer:

Explanation:

Actions

Run the LoadState tool on the Windows 10 Enterprise computers.

Run the System Preparation (Sysprep) tool on the Windows 7 and Windows 8 computers.

Run the System Preparation (Sysprep) tool on the Windows 10 Enterprise computers.

Modify the custom.ini file.

Run the ScanState tool on the Windows 7 and Windows 8 computers.

Modify the custom.xml file.

Answer Area

Modify the custom.xml file.

Run the ScanState tool on the Windows 7 and Windows 8 computers.



Run the LoadState tool on the Windows 10 Enterprise computers.



NEW QUESTION 204

Your network contains an Active Directory domain named contoso.com. All client computers run Windows 10 Enterprise and Microsoft Office 2013. All of the computers are joined to the domain.

Your company purchases a subscription to Office 365. An administrator creates an Office 365 account for each user and deploys a federated solution for Office 365.

You need to prevent the users from being prompted for a user account and a password each time they access services from Office 365.

Which account should you instruct the users to use when they sign in to their computer?

- A. a Microsoft account
- B. a local user account
- C. an Office 365 account
- D. a contoso.com account

Answer: D

NEW QUESTION 209

You administer Windows 10 Enterprise. Your network includes an Active Directory domain and a standalone server in a perimeter network that runs Windows Server 2008 R2.

Your company purchases five new tablets that run Windows 8. The tablets will be used to access domain resources and shared folders located on the standalone server.

You need to implement single sign-on (SSO) authentication for tablet users. You also need to ensure that you can audit personnel access to the shared folder.

Which two actions should you perform? Each correct answer presents part of the solution.

NOTE: Each correct selection is worth one point.

- A. Create a new Microsoft account for each user.
- B. Ensure that the local account for each user on the stand-alone server uses the same password as the corresponding Microsoft account.
- C. Join the tablets to a domain.
- D. Join the tablets to the same workgroup as the stand-alone server.
- E. Enable a guest account on the stand-alone server.
- F. On the stand-alone server, create user accounts that have the same logon names and passwords as the user domain accounts.

Answer: CF

NEW QUESTION 211

You support Windows 10 Enterprise computers. Your company protects all laptops by using the BitLocker Network Unlock feature.

Some employees work from home.

You need to ensure that employees can log on to their laptops when they work from home.

What should you do?

- A. Have users run the Manage-bde.exe –unlock command before they disconnect from the company network.
- B. Ensure that the Trusted Platform Module (TPM) chips in the laptops are version 1.2 or greater.
- C. Enable BitLocker to Go.
- D. Provide employees with their BitLocker PINs.

Answer: D

NEW QUESTION 216

You administer Windows 10 Enterprise tablets that are members of an Active Directory domain.

You want to create an archived copy of My Documents folders that are stored on the tablets. You create a standard domain user account to run a backup task.

You need to grant the backup task user account access to the folders. What should you do?

- A. Add the backup task account to the Remote Management Users group on a domain controller.
- B. Add the backup task account to the Backup Operators group on every tablet.
- C. Add the backup task account to the Backup Operators group on a domain controller.
- D. Set the backup task account as NTFS owner on all the folders.

Answer: B

NEW QUESTION 218

You manage Windows 10 Enterprise desktop and laptop computers for your company. They are part of a Windows Server 2012 R2 Active Directory Domain Services (AD DS) environment. The system administrators implement DFS for flexibility and availability. Laptops are able to connect to the company's private network by using local Ethernet or secure wireless.

Three users report that their files on the server are missing, and they no longer have drive G.

You need to ensure that the three users' computers can access the DFS namespace so that you can troubleshoot by using the DFS client.

What should you do?

- A. Ascertain whether the three users are connected through a wireless or wired connection.
- B. Ensure that the three users have access to the domain NETLOGON share.
- C. Ensure that the Net Logon service is running on all servers that are hosting the DFS namespace.
- D. Verify that a share is defined on the folder to which drive G is being mapped.

Answer: C

NEW QUESTION 223

DRAG DROP

You support Windows 10 Enterprise client computers. Company policy requires that Microsoft Outlook 2010 be the only mail client allowed and supported.

You collect software metering data and discover that several users are running other third-party mail clients.

You need to block the third-party mail client from running on the computers. All other applications should be allowed.

Which three actions should you perform in sequence? To answer, move the appropriate actions from the list of actions to the answer area and arrange them in the correct order.

Actions

Open **Computer Configuration of Group Policy**.

Select **Software Restriction Policies** and set the default to **Disallowed**.

Create new AppLocker Deny Script rules.

Open **User Configuration of Group Policy**.

Enable enforcement of executable rules.

Create new AppLocker Deny Executable rules.

Enable Audit enforcement of Script rules.

Answer Area



Answer:

Explanation:

Actions

Open **Computer Configuration of Group Policy**.

Select **Software Restriction Policies** and set the default to **Disallowed**.

Create new AppLocker Deny Script rules.

Open **User Configuration of Group Policy**.

Enable enforcement of executable rules.

Create new AppLocker Deny Executable rules.

Enable Audit enforcement of Script rules.

Answer Area

Open **Computer Configuration of Group Policy**.

Create new AppLocker Deny Executable rules.

Enable enforcement of executable rules.



NEW QUESTION 226

You have a computer named Client1. Client1 is joined to an Active Directory domain.
 You need to join Client1 to an Azure Active Directory (Azure AD) tenant. What should you do first?

- A. From the Local Group Policy Editor, modify the Add workstations to domain policy.
- B. From the network adapter properties, modify the DNS suffix.
- C. From System Control Panel, configure the computer to be a member of a workgroup.
- D. From the System in the Settings app, modify the sign-in options.

Answer: D

Explanation: <https://blogs.technet.microsoft.com/enterprisemobility/2015/05/28/azure-ad-join-on-windows-10-devices/>

NEW QUESTION 231

A company has an Active Directory Domain Services (AD DS) domain. All client computers run Windows 10 Enterprise. You are configuring security for a portable client computer that does not have a Trusted Platform Module (TPM) chip installed. You need to configure local Group Policy to turn on Windows BitLocker Drive Encryption on the computer. Which two actions should you perform? Each correct answer presents part of the solution.
NOTE Each correct selection is worth one point.

- A. Enable the Enforce drive encryption type on operating system drives policy setting.
- B. Enable the option to allow BitLocker without a compatible TPM.
- C. Enable the Require additional authentication at startup policy setting.
- D. Configure the TPM validation profile to enable Platform Configuration Register indices (PCRs) 0, 2, 4, and 11.

Answer: BC

Explanation: <https://www.howtogeek.com/howto/6229/how-to-use-bitlocker-on-drives-without-tpm/>

NEW QUESTION 233

Your company network includes a main office and multiple small branch offices. All of the computers in the branch offices run Windows 10 Enterprise and are members of an Active Directory domain. The company has no plans to deploy any servers in the branch offices. Users from some branch offices report that it takes a long time to open documents from a file server that is located in the main office. You need to enable BranchCache on all computers located in the branch offices. What should you do?

- A. Open Group Policy Editor and enable BranchCache in Distributed Cache mode for the computers in the branch offices.
- B. Open PowerShell and run the Enable-BCHostedClients cmdlet on the computers in the branch offices.
- C. Open Group Policy Editor and Enable BranchCache in a Hosted Cache mode for the computers in the branch offices.
- D. Open PowerShell, run the Set-BCCache cmdlet on computers in the branch offices.

Answer: A

Explanation: <http://www.computerstepbystep.com/set-branchcache-distributed-cache-mode.html> [https://technet.microsoft.com/en-us/library/hh831696\(v=ws.11\).aspx](https://technet.microsoft.com/en-us/library/hh831696(v=ws.11).aspx)

NEW QUESTION 236

You administer Windows 10 Enterprise tablets that are members of an Active Directory domain. Your company policy allows users to download and install only certain few Windows Store apps. You have created a new AppLocker Packaged Apps policy to help enforce the company policy. You need to test the new AppLocker Packaged Apps policy before you implement it for the entire company. What should you do?

- A. Open PowerShell and run the Get-AppLockerPolicy -Effective cmdlet to retrieve the AppLocker effective policy.
- B. Open Group Policy Management console and enforce the new AppLocker policy in Audit Only mode.
- C. Open Group Policy Management console and run the Group Policy Modeling Wizard.
- D. Open Group Policy Management console and run the Group Policy Results Wizard.

Answer: B

Explanation: [https://technet.microsoft.com/en-us/library/hh831440\(v=ws.11\).aspx](https://technet.microsoft.com/en-us/library/hh831440(v=ws.11).aspx) <https://docs.microsoft.com/en-us/windows/device-security/applocker/determine-your-application-control-objectives>

NEW QUESTION 237

Note: This question is part of a series of questions that use the same or similar answer choices. An answer choice may be correct for more than one question in the series. Each question is independent of the other questions in this series. Information and details in a question apply only to that question. You need to change the password used for an L2TP VPN connection. Which Control Panel application should you use?

- A. Work Folders
- B. Phone and Modem
- C. Credential Manager
- D. Sync Center
- E. System
- F. Network and Sharing Center
- G. RemoteApp and Desktop Connections
- H. Power Options

Answer: F

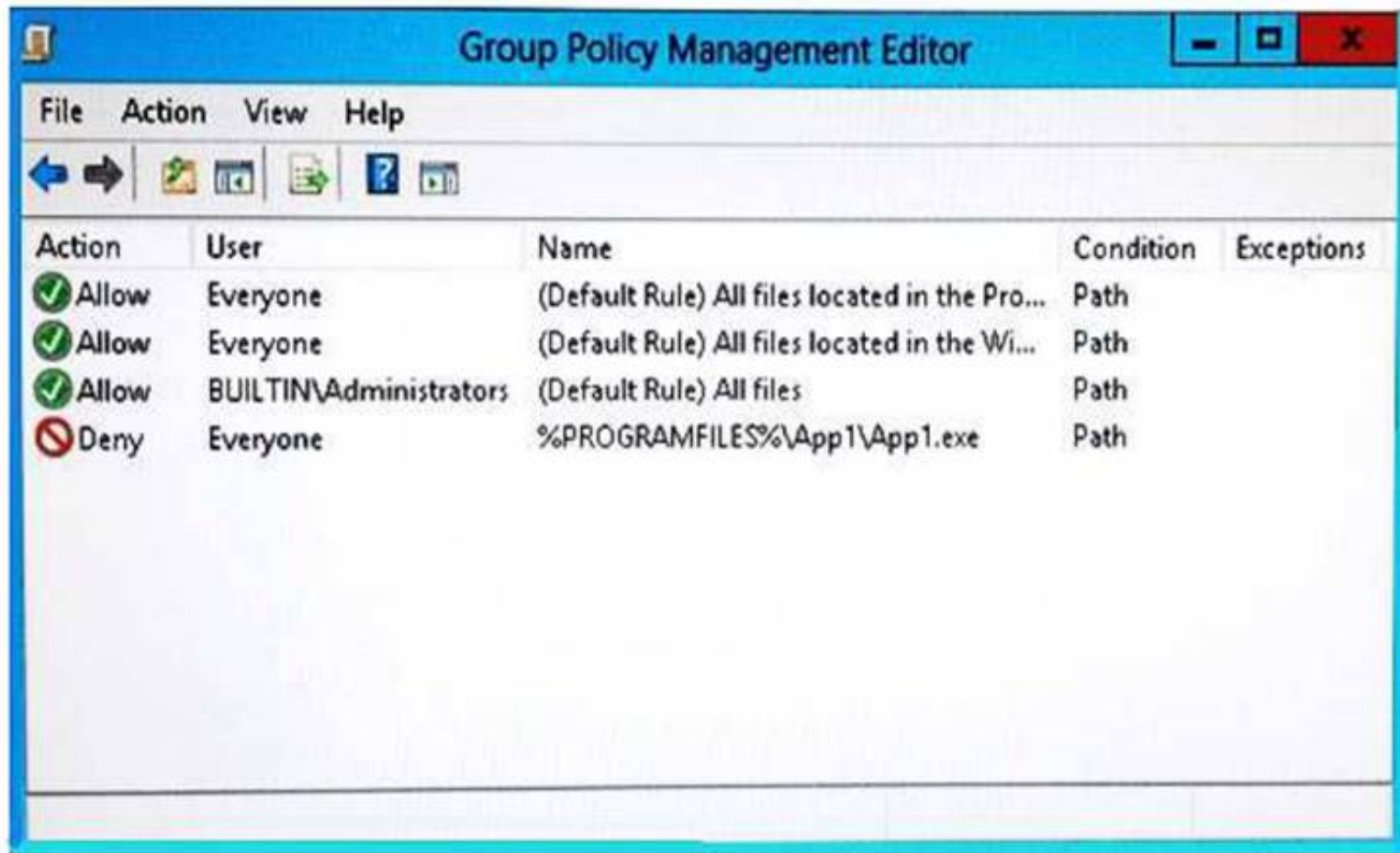
Explanation: https://www.watchguard.com/help/docs/wsm/xm_11/en-us/content/en-us/mvpn/l2tp/l2tp_vpn_client_win7_c.html

NEW QUESTION 242

HOTSPOT

Your network contains an Active Directory domain.

The Default Domain Policy contains the AppLocker settings configured as shown in the AppLocker Settings exhibit. (Click the Exhibit button.)



The screenshot shows the Group Policy Management Editor window. The title bar reads "Group Policy Management Editor". The menu bar includes "File", "Action", "View", and "Help". Below the menu bar is a toolbar with icons for navigation and help. The main area displays a table of AppLocker rules.

Action	User	Name	Condition	Exceptions
Allow	Everyone	(Default Rule) All files located in the Pro...	Path	
Allow	Everyone	(Default Rule) All files located in the Wi...	Path	
Allow	BUILTIN\Administrators	(Default Rule) All files	Path	
Deny	Everyone	%PROGRAMFILES%\App1\App1.exe	Path	

The Default Domain Policy contains the AppLocker properties configured as shown in the AppLocker properties exhibit. (Click the Exhibit button.)



Use the drop-down menus to select the answer choice that completes each statement.
 NOTE: Each correct selection is worth one point.



Answer Area

App1.exe will be **Answer Choice**

The rule configured for App1.exe is **Answer Choice** rule.



Answer Area

App1.exe will be Answer Choice

allowed for everyone.
denied for everyone.
denied for everyone except administrators.

The rule configured for App1.exe is Answer Choice rule.

an Executable
a Packaged App
a Script
a Windows Installer

Answer:

Explanation: App1.exe will be denied for everyone.
The rule configured for App1.exe is an Executable rule. <https://docs.microsoft.com/en-us/windows/device-security/applocker/understand-applocker-enforcement-settings>
<https://docs.microsoft.com/en-us/windows/device-security/applocker/determine-your-application-control-objectives>

NEW QUESTION 244

You administer computers that run Windows XP Professional. These computers have a wide range of line of business (LOB) applications installed. You want to migrate from Windows XP Professional to Windows 10 Enterprise. You need to identify which application will prompt users for elevated privileges. What should you do first?

- A. Configure the advanced audit setting on the Windows 10 Enterprise computers before you install the LOB applications.
- B. Install the Microsoft Assessment and Planning (MAP) Toolkit.
- C. Install the Microsoft Application Compatibility Toolkit (ACT).
- D. Install User Experience Virtualization (UE-V) on the Windows 10 Enterprise computers before you install the LOB applications.

Answer: C

Explanation: [https://technet.microsoft.com/en-us/library/ee449434\(v=ws.10\).aspx](https://technet.microsoft.com/en-us/library/ee449434(v=ws.10).aspx)

NEW QUESTION 248

DRAG DROP

You are the system administrator for your company. You deploy new Windows 10 Enterprise computers to replace the company's Windows Vista and Windows 7 computers. Users report that the new Windows 10 Enterprise computers display error messages when the users run the company's custom financial applications. In addition, many features do not function properly. You need to set up Remote Desktop Services on a Windows Server 2012 R2 server to provide Windows 7 VM-hosted RemoteApp programs. All prerequisite roles and features are installed on the server. In which order should you perform the actions? To answer, move all actions from the list of actions to the answer area and arrange them in the correct order.

Actions

Publish the RemoteApp programs.

Run Sysprep on a Windows 7 VM template.

Update the Hyper-V Integration Components on a Windows 7 VM template.

Run the Create Collection Wizard to set up a pooled virtual desktop collection.



Answer Area



Answer:

Explanation: <https://technet.microsoft.com/en-us/library/jj554307.aspx>

NEW QUESTION 252

DRAG DROP

You administer Windows 7 and Windows 10 Enterprise computers. You run an application that saves files that contain local settings unique to each user. You want to allow users to synchronize settings for an application to any enterprise computer when they log on to the enterprise computer. You need to implement a solution that will move a user's settings files to any computer. You also need to ensure that you can roll back the changes if necessary. Which required task or tasks should you perform with each approach? To answer, drag the appropriate required task to the corresponding approach. Each required task may be used once, more than once, or not at all. You may need to drag the split bar between panes or scroll to view content. NOTE: Each correct selection is worth one point.

Required Tasks

Create a setting location template.

Place the settings location template.

Enable Folder Redirection.

Deploy the User Experience Virtualization (UE-V) Agent.

Answer Area

Generator

Template Catalog Path

Microsoft Desktop Optimization Pack (MDOP)

Required Task

Required Task

Required Task

Answer:

Explanation: <https://docs.microsoft.com/en-us/microsoft-desktop-optimization-pack/uev-v2/prepare-a-ue-v-2x-deployment-new-uevv2>

NEW QUESTION 253

You have a computer named Computer1 that runs Windows 10 Enterprise. You add a 1 TB hard drive and create a new volume that has the drive letter D. You format the drive by using NTFS. You need to limit the amount of space that each user can consume on D: to 200 GB. Members of the Administrators group should have no limit. Which three actions should you perform? Each correct answer presents part of the solution. NOTE: Each correct selection is worth one point.

- A. Set a default quota limit.
- B. Run convert D: /FS:NTFS.
- C. Run fsutil quota violations D:.
- D. Enable the Deny disk space to users exceeding quota limit setting.
- E. Add a quota entry.

Answer: ACD

Explanation: <https://msdn.microsoft.com/en-us/library/dd163561.aspx> [https://technet.microsoft.com/en-us/library/cc788136\(v=ws.11\).aspx](https://technet.microsoft.com/en-us/library/cc788136(v=ws.11).aspx)

NEW QUESTION 258

You have a computer named Computer1 that runs Windows 10 Enterprise. You plan to install the most recent updates to Computer1. You need to ensure that you can revert to the current state of Computer1 in the event that the computer becomes unresponsive after the update. What should you include in your solution?

- A. A volume snapshot by using the fsutil.exe command with the volume parameter
- B. The Restore personal files option from the File History control panel item
- C. The Refresh your PC option from the PC Settings
- D. The Backup and Restore (Windows 7) control panel item

Answer: D

Explanation: <http://www.pcadvisor.co.uk/how-to/windows/how-back-up-windows-10-3635397/>

NEW QUESTION 261

A company has Windows 10 Enterprise client computers. Users store data files in their user profile libraries. You need to ensure that you can restore data files to any date while minimizing system overhead. Which two actions should you perform? Each answer presents part of the solution. NOTE Each correct selection is worth one point.

- A. Turn on File History.
- B. Configure Windows 7 File Recovery.

- C. Configure settings to save copies of files daily.
- D. Enable Storage Spaces.

Answer: AC

Explanation: <http://www.pcworld.com/article/2974385/windows/how-to-use-windows-10s-file-history-backup-feature.html>

NEW QUESTION 262

You support Windows 10 Enterprise desktop computers. Your company has a security policy that controls multiple settings of the desktops through the domain group policy.

The security policy recently was updated to require that access to several built-in Windows 10 Enterprise tools be prohibited to all local users on one of the desktop computers.

You need to implement this new policy. What should you do?

- A. Configure NTFS permissions.
- B. Create a Windows To Go workspace.
- C. Configure the AppLocker policy.
- D. Enable BitLocker.

Answer: C

NEW QUESTION 264

You need to enable other users to establish Remote Desktop connections to your computer.

Which Control Panel application should you use?

- A. Credential Manager
- B. Sync Center
- C. System
- D. Power Options
- E. Phone and Modem
- F. RemoteApp and Desktop Connections
- G. Network and Sharing Center
- H. Work Folders

Answer: C

NEW QUESTION 266

You have an Active Directory domain named contoso.com. Work folders are deployed.

A user named User1 has a Windows 10 Home computer that is configured to use Work Folders.

User1 connects a new removable USB drive to the computer. User1 needs to move the Work Folders to the new drive. What should User1 do first?

- A. From the Work Folders settings, click Manage Credentials.
- B. From Services, stop the Work Folders service.
- C. From the Work Folders settings, click Stop using Work Folders.
- D. From Services, set the BitLocker Drive Encryption Service to start automatically.

Answer: C

NEW QUESTION 267

You administer a Windows 10 Enterprise computer.

The computer is configured to encrypt several folders by using a self-signed Encrypted File System (EFS) certificate.

You need to make a backup copy of the encryption keys. What should you do?

- A. Open the Certificates console and connect to the user account certificate
- B. Export the self-signed EFS certificate from the Trusted People folder to a Canonical Encoding Rules (CER) file.
- C. Open the Certificates console and connect to the user account certificate
- D. Find the personal self-signed EFS certificate and export it to a Personal Information Exchange (PFX) file.
- E. Open the Certificates console and connect to the user account certificate
- F. Export the personal self-signed EFS certificate from the Trusted Root Certification Authority folder to a Personal Information Exchange (PFX) file.
- G. Open the Certificates console and connect to the computer account certificate
- H. Export the self-signed EFS certificate from the Trusted People folder to a Canonical Encoding Rules(CER) file.

Answer: B

NEW QUESTION 268

You have a portable Windows 10 Enterprise computer.

You are creating a backup plan. You have the following requirements: Automatically back up the files in your Documents folder every hour. Ensure that you can recover different versions of the backed-up files. Do not back up the Windows operating system files.

You need to configure the computer to meet the requirements.

Which two actions should you perform? Each correct answer presents part of the solution.

NOTE: Each correct selection is worth one point.

- A. Connect an external hard drive to the computer.
- B. Turn on File History.
- C. Create a volume mount point in your Documents folder.
- D. Schedule a task to create a restore point every hour.
- E. Create a recovery drive on drive C.

Answer: AB

NEW QUESTION 273

You have a computer that runs Windows 10.

You need to ensure that the next time the computer restarts, the computer starts in safe mode.

What should you use?

- A. the Restore–Computer cmdlet
- B. the Bcdedit command
- C. the Restart–Computer cmdlet
- D. the Bootcfg command

Answer: B

NEW QUESTION 274

You are a systems administrator for your company. The company has employees who work remotely by using a virtual private network (VPN) connection from their computers, which run Windows 10 Enterprise.

These employees use an application to access the company intranet database servers. The company recently decided to distribute the latest version of the application through using a public cloud.

Some users report that every time they try to download the application by using Internet Explorer, they receive a warning message that indicates the application could harm their computer.

You need to recommend a solution that prevents this warning message from appearing, without compromising the security protection of the computers. What should you do?

- A. Publish the application through a public file transfer protocol (FTP) site.
- B. Publish the application through an intranet web site.
- C. Instruct employees to disable the SmartScreen Filter from within the Internet Explorer settings.
- D. Digitally sign the application by using a trusted certificate, and then update the default App PackageDeployment policy on all computers.

Answer: D

NEW QUESTION 276

You support Windows 10 Enterprise desktop computers and tablets that are members of an Active Directory domain. The domain includes Active Directory Certificate Services. All users use virtual smart cards to log on to their computers.

A domain user wants to log on to both his desktop computer and his tablet computer by using the same domain user account.

You need to configure the desktop and tablet computers to support two-factor authentication for the same domain user account. What should you do?

- A. Enroll the user for two separate certificates based on the Smartcard Logon templat
- B. Install one certificate in a virtual smart card on each of the user's computers/
- C. After the user has logged on to one computer, disable the Trusted Platform Module (TPM) on the secondcompute
- D. Run the tpmvscmgr.exe utility on each of the computers.
- E. Issue a temporary physical smart car
- F. Use this smart card for an initial logon on each computer, then disconnect the tablet from the office network and destroy the temporary smart card.
- G. Export the private key from the desktop compute
- H. Import the private key to the tablet.

Answer: A

NEW QUESTION 278

You configure VPN auto trigger for five Windows 10 Enterprise computers. When you test the computers, they trigger the VPN all the time, even in the office.

You need to configure VPN auto trigger to function only when VPN is required. Which command should you use?

- A. Set –VpnConnectionTriggerDnsConfiguration [-Name] <string> [-DnsSuffix<String>] [-DnsIPAddress <string[]>] [-DnsSuffixSearchList
- B. Add –VpnConnectionTriggerApplication [-Name] <string> –ApplicationID<String[]> –PassThru
- C. Add –VpnConnectionTriggerTrusted Network [-Name] <string> [-DnsSuffix]<string[]>
- D. Add –VpnConnectionTriggerDnsConfiguration [-Name] <string> –DnsSuffix<String> [-DnsIPAddress <string[]>] –PassThru

Answer: C

NEW QUESTION 282

A company has Windows 10 Enterprise client computers. The company uses Windows BitLocker Drive Encryption with the data-only option on all client computers.

You delete a file containing highly confidential information from your computer.

You need to clear the free space on the hard drive to minimize the chance of the confidential information being recovered.

Which command should you run on the client computer?

- A. diskpart clean
- B. manage-bde -w
- C. chkdsk /spotfix
- D. BdeHdCfg –target c: shrink

Answer: B

NEW QUESTION 286

A company has Windows 10 Enterprise client computers.

When a user tries to print from his portable client computer while connected to the corporate network, he discovers that the default printer is set to his home printer instead of to the office printer.

You need to ensure that the default printer for the computer is the office printer when the computer is connected to the corporate network and the user's home printer when the computer is connected to his home network. What should you do on the portable computer?

- A. Install the corporate printer and set it as the default printe
- B. Then add the home printer to the homegroupsettings.
- C. In the printer properties of the corporate printer, configure the active port with the correct TCP/IP settings for the printer.
- D. Set a default printer for each network.
- E. Connect to the home network and choose Connect from the shared printer object context men
- F. Thenconnect to the corporate network and choose Connect from the shared printer object context menu.

Answer: C

NEW QUESTION 288

An organization has client computers that run Windows 8. You upgrade the client computers to Windows 10 Enterprise without migrating the local user profiles. You install the Windows Assessment and Deployment Kit (ADK) in the environment. You need to migrate the user profiles from the Windows 8 installation to the Windows 10 Enterprise installation. What should you do first on each client computer?

- A. Run the loadstate command.
- B. Copy the Default Profile to a folder on drive C.
- C. Run the ImageX command.
- D. Run Windows Easy Transfer and select the user profile to migrate.
- E. Run the scanstate command.

Answer: E

NEW QUESTION 291

You administer Windows 10 Enterprise computers for a software development company. The marketing department is going to meet a potential customer to demonstrate the product. You want to configure a laptop that has a stand-alone virtual machine that runs Windows 10 Enterprise and the latest build of your software. You need to enable BitLocker on the system drive of the virtual machine. What should you do first.

- A. Join the virtual machine to an Active Directory Domain Services (AD DS) domain.
- B. Activate Windows.
- C. Turn on the Require additional authentication at startup local policy.
- D. Turn off the Require additional authentication at startup local policy.

Answer: C

NEW QUESTION 293

You manage a corporate network. All servers run Windows Server 2016. All servers and client devices are joined to an Active Directory Domain Services (AD DS) domain named adatum.com.

The use of VPN servers on the network is strictly prohibited.

Users must be able to access the corporate network in addition to Work Folders when they work at home on Windows 10 devices. You install, configure, and publish the certificate revocation list (CRL) for an internal Active Directory Certificate Services (AD CS) server.

You need to configure the environment to allow your users to register devices. Solution: You create a DNS CNAME record of enterpriseregistration.adatum.com.

You deploy a Web

Application Proxy server and point the DNS record to your Web Application Proxy server.

Does the solution meet the goal?

- A. Yes
- B. No

Answer: B

Explanation: References: <https://blog.nextxpert.com/2013/11/27/publishing-work-folders-with- web-application-proxy-2/>

NEW QUESTION 296

HOTSPOT

You run the Get-UevConfiguration cmdlet and you receive the following output:

Key	Value
---	----
ContactITDescription	
ContactITUrl	
DontSyncWindows8AppSettings	False
FirstUseNotificationEnabled	True
MaxPackageSizeInBytes	
SettingsImportNotifyDelayInSeconds	10
SettingsImportNotifyEnabled	True
SettingsStoragePath	\\SERVER1\Share1
SettingsTemplateCatalogPath	\\SERVER2\Share2
SupportedTemplateSchemaVersions	{http://schemas.microsoft.com/UserExperienceVirtualization/2012/SettingsLocati...
SyncEnabled	True
SyncMethod	SyncProvider
SyncOverMeteredNetwork	False
SyncOverMeteredNetworkWhenRoaming	False
SyncProviderPingEnabled	True
SyncTimeoutInMilliseconds	2000
SyncUnlistedWindows8Apps	False
TrayIconEnabled	True
VdiCollectionName	DefaultVdiCollection
WaitForSyncOnApplicationStart	False
WaitForSyncOnLogon	False
WaitForSyncTimeoutInMilliseconds	2000

Use the drop-down menus to select the answer choice that completes each statement based on the information presented in the output.

NOTE: Each correct selection is worth one point.

Answer Area

User custom settings are [answer choice].

	▼
cached only	
saved directly to \\SERVER1\Share1	
saved first to a local cache, and then synchronized to \\SERVER1\Share1	
saved first to a local cache, and then synchronized to \\SERVER2\Share2	

If you want to store the user settings of a new application, you must copy an XML file to [answer choice].

	▼
\\SERVER1\Share1	
\\SERVER2\Share2	
%Program Files%\Microsoft User Experience Virtualization\Modules\	
http://shemas.microsoft.com/UserExperienceVirtualization/2012/SettingsLocation	

Answer:

Explanation:

User custom settings are [answer choice].

	▼
cached only	
saved directly to \\SERVER1\Share1	
saved first to a local cache, and then synchronized to \\SERVER1\Share1	
saved first to a local cache, and then synchronized to \\SERVER2\Share2	

If you want to store the user settings of a new application, you must copy an XML file to [answer choice].

	▼
\\SERVER1\Share1	
\\SERVER2\Share2	
%Program Files%\Microsoft User Experience Virtualization\Modules\	
http://shemas.microsoft.com/UserExperienceVirtualization/2012/SettingsLocation	

NEW QUESTION 300

You have five computers that run Windows 10. The computers are used for testing and cannot connect to the Internet. You are the only user who uses the computers. All of the computers are members of the same domain.

One of the computers contains a folder named Folder1.

You need to ensure that you can access Folder1 from any of the computers. What should you configure?

- A. HomeGroup settings
- B. OneDrive for Business
- C. NTFS permissions
- D. Encrypting File System (EFS) settings
- E. share permissions
- F. application control policies
- G. account policies
- H. software restriction policies

Answer: A

Explanation: References: <https://www.teamknowhow.com/kit-guide/computing/laptops/dell/inspiron-13-5000/how-to-set-upfile-sharing-on-windows-10>

NEW QUESTION 302

You are the system administrator for a company. All devices run Windows 10 and use a variety of Microsoft Store for Business apps. All user reports issues updating a Windows Store app. You need to troubleshoot the issue.

Winch three actions should you perform? Each correct answer presents a complete solution.

NOTE: Each correct selection is worth one point.

- A. Run the SFC command.
- B. Run the repair-bde command.
- C. Run the net start wuauserv command.
- D. Run the Windows App Troubleshooter.
- E. Use the Programs and Features Control Panel applet to repair the application.

Answer: ADE

NEW QUESTION 303

? company installs a line-of-business (LOB) app on a server that runs Remote Desktop Services.

You need to ensure that you can publish the application by using RemoteApp. What should you do first?

- A. Create a personal desktop session collection.
- B. Manually assign users to a session host.
- C. Create a pooled desktop collection.
- D. Automatically assign users to a session host.

Answer: C

NEW QUESTION 304

? company has Windows 10 Enterprise client computers. File History is on.

An employee downloads data to a folder on drive D named Archives.

You need to ensure that the user can restore files from the Archives folder by using File History.

What should you do?

- A. Configure the File History advanced settings to include the Archives folder.
- B. Create a library named History and add the Archives folder to the library.
- C. From the File History configuration options, change the drive and select the Archives folder.
- D. Move the Archives folder into the Windows system folder.

Answer: B

NEW QUESTION 306

A company has Windows 10 Enterprise client computers. Users store data files in their user profile libraries.

You need to ensure that users can restore data files to any date while minimizing system overhead.

Which two actions should you perform? Each answer presents part of the solution. NOTE: Each correct selection is worth one point.

- A. Add each user to the local Backup Operations group.
- B. Turn on system protection.
- C. Configure settings to save copies of files daily.
- D. Turn on File History.

Answer: CD

Explanation: References: <http://www.pcworld.com/article/2974385/windows/how-to-use-windows-10s-file-history-backupfeature.html>

NEW QUESTION 307

DRAG DROP

You install Widows 10 Enterprise on 15 computers. The computers require a static IP address to accommodate designated firewall policies.

You need to configure a static IP address, a primary DNS server with an IP address of 192.168.1.101, and an additional DNS server with an IP address of 192.168.1.102.

Which NETSH commands should you use to achieve these objectives? To answer, drag the appropriate commands from the list of commands to the correct locations in the answer area. Each command may be used once, more than once, or not at all. You may need to drag the split bar between panes or scroll to view content.

NOTE: Each correct selection is worth one point.

Commands		Answer Area
<pre>set address Local Area Connection static 192.168.1.201 255.255.255.0 192.168.1.1</pre>		<p>Assign an IP address, subnet mask, and gateway.</p> <p>Command</p>
<pre>set dns Local Area Connection static 192.168.1.101</pre>		<p>Assign the first DNS server.</p> <p>Command</p>
<pre>add dns 192.168.1.102 index-2</pre>	•	
<pre>set address Local Area Connection static 192.168.1.201 255.255.255.0 10.168.10.1</pre>	•	<p>Assign the second DNS server.</p> <p>Command</p>
<pre>set dns 192.168.1.102</pre>	•	
<pre>add dns Local Area Connection static 192.168.1.101 index-1</pre>	•	

Answer:

Explanation:

Assign an IP address, subnet mask, and gateway.

```
set address Local Area
Connection static
192.168.1.201 255.255.255.0
192.168.1.1
```

Assign the first DNS server.

```
set dns Local Area Connection
static 192.168.1.101
```

Assign the second DNS server.

```
add dns 192.168.1.102 index-2
```

NEW QUESTION 312

You work for a small company that recently upgraded to Windows 10 Enterprise computers. The HR department stores sensitive data in a folder named Personnel Files. You need to encrypt this folder only, and no other data. What are two possible ways to achieve this goal? Each correct answer presents a complete solution. NOTE: Each correct selection is worth one point.

- A. Use EFS.
- B. Use cipher.exe.
- C. Use BitLocker
- D. Use RFFS.

Answer: AB

NEW QUESTION 313

A company has Windows 10 Enterprise client computers. The company uses Windows BitLocker Drive Encryption and BitLocker Network Unlock on all client computers.

You need to collect information about BitLocker Network Unlock status. Which command should you run?

- A. Run the BitLockerWizard command.
- B. Run the manage-bde command.
- C. Run the BdeHdCfgr command.
- D. Run the bitsadmin command.

Answer: B

Explanation: References: [https://docs.microsoft.com/en-us/previous-versions/windows/it-pro/windows-7/dd875513\(v=ws.10\)#BKMK_status](https://docs.microsoft.com/en-us/previous-versions/windows/it-pro/windows-7/dd875513(v=ws.10)#BKMK_status)

NEW QUESTION 318

A company has an Active Directory Domain Services (AD DS) domain with Windows 10 Enterprise client computers.

You need to minimize the amount of Trusted Platform Module (TPM) authorization information that is stored in the registry.

What should you do?

- A. Create a Group Policy Object (GPO) that enables the Turn on TPM Local Encryption policy setting.
- B. Enable Platform Configuration Register indices (PCRs) 0, 2, 4, and 11 for the Configure TPM validationprofile for native UEFI firmware configuration policy setting.
- C. Create a Group Policy Object (GPO) that disables the Configure the level of TPM owner authorizationinformation available to operating system policy setting.
- D. Create a Group Policy Object (GPO) that sets the Configure the level of TPM owner authorizationinformation available to operating system policy setting to None.

Answer: D

Explanation: References: [https://docs.microsoft.com/en-us/previous-versions/windows/it-pro/windows-8.1-and-8/jj679889\(v=ws.11\)#BKMK_tpmgp_oauthos](https://docs.microsoft.com/en-us/previous-versions/windows/it-pro/windows-8.1-and-8/jj679889(v=ws.11)#BKMK_tpmgp_oauthos)

NEW QUESTION 320

.....

THANKS FOR TRYING THE DEMO OF OUR PRODUCT

Visit Our Site to Purchase the Full Set of Actual 70-697 Exam Questions With Answers.

We Also Provide Practice Exam Software That Simulates Real Exam Environment And Has Many Self-Assessment Features. Order the 70-697 Product From:

<https://www.2passeasy.com/dumps/70-697/>

Money Back Guarantee

70-697 Practice Exam Features:

- * 70-697 Questions and Answers Updated Frequently
- * 70-697 Practice Questions Verified by Expert Senior Certified Staff
- * 70-697 Most Realistic Questions that Guarantee you a Pass on Your FirstTry
- * 70-697 Practice Test Questions in Multiple Choice Formats and Updatesfor 1 Year