

70-697 Dumps

Configuring Windows Devices

<https://www.certleader.com/70-697-dumps.html>



NEW QUESTION 1

Your network contains an Active Directory domain named contoso.com. The domain contains Windows 10 Enterprise client computers. Your company has a subscription to Microsoft Office 365. Each user has a mailbox that is stored in Office 365 and a user account in the contoso.com domain. Each mailbox has two email addresses. You need to add a third email address for each user. What should you do?

- A. From Active Directory Users and Computers, modify the E-mail attribute for each user.
- B. From Microsoft Azure Active Directory Module for Windows PowerShell, run the Set-Mailbox cmdlet.
- C. From Active Directory Domains and Trust, add a UPN suffix for each user.
- D. From the Office 365 portal, modify the Users settings of each user.

Answer: B

Explanation: We can use the Set-Mailbox cmdlet to modify the settings of existing mailboxes. The EmailAddresses parameter specifies all the email addresses (proxy addresses) for the recipient, including the primary SMTP address. In on-premises Exchange organizations, the primary SMTP address and other proxy addresses are typically set by email address policies. However, you can use this parameter to configure other proxy addresses for the recipient. To add or remove specify proxy addresses without affecting other existing values, use the following syntax:
@{Add="[<Type>]:<emailaddress1>", "[<Type>]:<emailaddress2>" ...; Remove="[<Type>]:<emailaddress2>", "[<Type>]:<emailaddress2>" ...}.

NEW QUESTION 2

You manage a Microsoft Azure RemoteApp deployment. The deployment consists of a cloud collection named CloudCollection1 and a hybrid collection named HybridCollection1. Both collections reside in a subscription named Subscription1. Subscription1 contains two Active Directory instances named AzureAD1 and AzureAD2. AzureAD1 is the associated directory of Subcsription1. AzureAD1 is synchronized to an on-premises Active Directory forest named constoso.com. Passwords are synchronized between AzureAD1 and the on-premises Active Directory. You have the following user accounts:

User Name	Account Type
User1	Microsoft account
User2	AzureAD1 account
User3	Contoso.com account

You need to identify to which collections each user can be assigned access. What should you identify? To answer, select the appropriate options in the answer area.

Answer Area

User1:

User2:

User3:

User1:
None
CloudCollection1 only
HybridCollection1 only
CloudCollection1 and HybridCollection1

User2:
None
CloudCollection1 only
HybridCollection1 only
CloudCollection1 and HybridCollection1

User3:
None
CloudCollection1 only
HybridCollection1 only
CloudCollection1 and HybridCollection1

Answer:

Explanation: A Microsoft account can only access a cloud collection. An Azure Active Directory (Azure AD) account can access a cloud collection and it can access a hybrid collection if directory synchronization with password sync is deployed.

An on-premise domain account that does not exist in any Azure Active Directory cannot access Azure cloud resources.
References: <https://azure.microsoft.com/en-gb/documentation/articles/remoteapp-collections/>

NEW QUESTION 3

You support Windows 10 Enterprise computers.
Your company has started testing Application Virtualization (App-V) applications on several laptops. You discover that the App-V applications are available to users even when the laptops are offline.
You need to ensure that the App-V applications are available to users only when they are connected to the company network.
What should you do?

- A. Change user permissions to the App-V applications.
- B. Disable the Disconnected operation mode.
- C. Configure mandatory profiles for laptop users.
- D. Reset the App-V client FileSystem cache.

Answer: B

Explanation: Disconnected operation mode is enabled by default and allows App-V applications to be available to users even when the laptops are offline. We need to disable Disconnected operation mode to prevent offline access.
The disconnected operation mode settings—accessible by right-clicking the Application Virtualization node, selecting Properties, and clicking the Connectivity tab—enables the Application Virtualization Desktop Client or Client for Remote Desktop Services (formerly Terminal Services) to run applications that are stored in the file system cache of the client when the client is unable to connect to the Application Virtualization Management Server.

NEW QUESTION 4

You have an image of Windows 10 Enterprise named Image1. Image1 has version number 1.0.0.0 of a custom, line-of-business universal app named App1.
You deploy Image1 to Computer1 for a user named User1.
You need to update App1 to version 1.0.0.1 on Computer1 for User1 only.
What command should you run? To answer, select the appropriate options in the answer area.



Answer Area

Answer Area

Answer:

Explanation: In this question, we need to update App1 to version 1.0.0.1 on Computer1 “for User1 only”. The Add-AppxPackage cmdlet adds a signed app package (.appx) to a user account.
To update the application, we need to use the -path parameter to specify the path to the upgraded application.

NEW QUESTION 5

Your Windows 10 Enterprise work computer is a member of an Active Directory domain. You use your domain account to log on to the computer. You use your Microsoft account to log on to a home laptop.
You want to access Windows 10 Enterprise apps from your work computer by using your Microsoft account. You need to ensure that you are able to access the Windows 10 Enterprise apps on your work computer by logging on only once.
What should you do?

- A. Add the Microsoft account as a user on your work computer.
- B. Enable Remote Assistance on your home laptop.
- C. Connect your Microsoft account to your domain account on your work computer.
- D. Install SkyDrive for Windows on both your home laptop and your work computer.

Answer: C

Explanation: You can connect your Microsoft account to your domain account on your work computer. This will enable you to sign in to your work computer with your Microsoft account and access the same resources that you would access if you were logged in with your domain account.
When you connect your Microsoft account to your domain account, you can sync your settings and preferences between them. For example, if you use a domain account in the workplace, you can connect your Microsoft account to it and see the same desktop background, app settings, browser history and favorites, and other Microsoft account settings that you see on your home PC.

Topic 2, Plan desktop and device deployment

NEW QUESTION 6

Employees are permitted to bring personally owned portable Windows 10 Enterprise computers to the office. They are permitted to install corporate applications by using the management infrastructure agent and access corporate email by using the Mail app.

An employee's personally owned portable computer is stolen.

You need to protect the corporate applications and email messages on the computer. Which two actions should you perform? Each correct answer presents part of the solution.

- A. Prevent the computer from connecting to the corporate wireless network.
- B. Change the user's password.
- C. Disconnect the computer from the management infrastructure.
- D. Initiate a remote wipe.

Answer: BD

Explanation: The personally owned portable Windows10Enterprise computers being managed by the management infrastructure agent enables the use of remote wipe. By initiating a remote wipe, we can erase all company data including email from the stolen device.

Microsoft Intune provides selective wipe, full wipe, remote lock, and passcode reset capabilities. Because mobile devices can store sensitive corporate data and provide access to many corporate resources, you can issue a remote device wipe command from the Microsoft Intune administrator console to wipe a lost or stolen device.

Changing the user's password should be the first step. If the stolen computer is accessed before the remote wipe happens, the malicious user could be able to access company resources if the laptop has saved passwords.

NEW QUESTION 7

You have a Windows 10 Enterprise computer named Computer1 that has the Hyper-V feature installed. Computer1 hosts a virtual machine named VM1. VM1 runs Windows 10 Enterprise. VM1 connects to a private virtual network switch.

From Computer1, you need to remotely execute Windows PowerShell cmdlets on VM1. What should you do?

- A. Run the winrm.exe command and specify the –s parameter.
- B. Run the Powershell.exe command and specify the –Command parameter.
- C. Run the Receive–PSSession cmdlet and specify the –Name parameter.
- D. Run the Invoke–Command cmdlet and specify the –VMName parameter.

Answer: D

Explanation: We can use Windows PowerShell Direct to run PowerShell cmdlets on a virtual machine from the Hyper-V host. Because Windows PowerShell Direct runs between the host and virtual machine, there is no need for a network connection or to enable remote management.

There are no network or firewall requirements or special configuration. It works regardless of your remote management configuration. To use it, you must run Windows 10 or Windows Server Technical Preview on the host and the virtual machine guest operating system.

To create a PowerShell Direct session, use one of the following commands:

NEW QUESTION 8

You are the desktop administrator for a small company.

Your workgroup environment consists of Windows 10 Enterprise computers. You want to prevent 10 help desk computers from sleeping. However, you want the screens to shut off after a certain period of time if the computers are not being used.

You need to configure and apply a standard power configuration scheme for the 10 help desk computers on your network.

Which two actions should you perform? Each correct answer presents part of the solution.

- A. Import the power scheme by using POWERCFG /IMPORT on each of the remaining help desk computer
- B. Set the power scheme to Active by using POWERCFG /S.
- C. Use POWERCFG /X on one help desk computer to modify the power scheme to meet the requirements.Export the power scheme by using POWERCFG /EXPORT.
- D. Use POWERCFG /S on one help desk computer to modify the power scheme to meet the requirements.Export the power scheme by using POWERCFG /EXPORT.
- E. Import the power scheme by using POWERCFG /IMPORT on each of the remaining help desk computer
- F. Set the power scheme to Active by using POWERCFG /X.

Answer: AB

Explanation: You can use the Powercfg.exe tool to control power settings and configure computers to default to Hibernate or Standby modes.

In this question, we use POWERCFG /X on one help desk computer to modify the power scheme to meet our requirements. After configuring the required settings, we can export the power scheme settings to a file by using POWERCFG /EXPORT.

We can then import the power scheme from the file on each of the remaining help desk computers by using POWERCFG /IMPORT. After importing the power scheme on the remaining computers, we need to set the new power scheme to be the active power scheme by using POWERCFG /S.

NEW QUESTION 9

You have a Microsoft Intune subscription.

You have three security groups named Security1, Security2 and Security3. Security1 is the parent group of Security2. Security2 has 100 users.

You need to change the parent group of Security2 to be Security3. What should you do first?

- A. Edit the properties of Security1.
- B. Edit the properties of Security2.
- C. Delete security2.
- D. Remove all users from Security2.

Answer: C

Explanation: You cannot change the parent group of a security group in Microsoft Intune. You can only delete the group and recreate another group with the

correct parent.

Deleting a group does not delete the users that belong to that group. Therefore, you do not need to remove the users from the group; you can just delete the group and recreate it.

NEW QUESTION 10

You manage Microsoft Intune for a company named Contoso. You have 200 computers that run Windows 10. The computers are Intune clients.

You need to configure software updates for the clients.

Which policy template should you use to configure each software updates setting? To answer, drag the appropriate policy templates to the correct settings. Each policy template may be used once, more than once, or not at all. You may need to drag the split bar between panes or scroll to view content.

Answer:

Explanation: You must make use of the Microsoft Intune Windows general configuration policy to configure settings for enrolled devices. The system settings that can be configured using this policy include the following:

To configure the Allow immediate installation of updates that do not interrupt Windows update policy setting you have to configure and deploy a Microsoft Intune Agent Settings policy.

NEW QUESTION 10

Your network contains an Active Directory domain named contoso.com. Contoso.com is synchronized to a Microsoft Azure Active Directory. You have a Microsoft Intune subscription.

Your company plans to implement a Bring Your Own Device (BYOD) policy. You will provide users with access to corporate data from their personal iOS devices.

You need to ensure that you can manage the personal iOS devices. What should you do first?

- A. Install the Company Portal app from the Apple App Store.
- B. Create a device enrollment manager account.
- C. Set a DNS alias for the enrollment server address.
- D. Configure the Intune Service to Service Connector for Hosted Exchange.
- E. Enroll for an Apple Push Notification (APN) certificate.

Answer: E

Explanation: An Apple Push Notification service (APNs) certificate must first be imported from Apple so that you can manage iOS devices. The certificate allows Intune to manage iOS devices and institutes an accredited and encrypted IP connection with the mobile device management authority services.

NEW QUESTION 15

You have a network that contains Window 10 Enterprise computers.

The network configuration of one of the computers is shown in the following output.

Windows IP Configuration

```
Host Name . . . . . : Computer1
Primary Dns Suffix . . . . . :
Node Type . . . . . : Hybrid
IP Routing Enabled. . . . . : No
WINS Proxy Enabled. . . . . : No
```

Wireless LAN adapter Local Area Connection* 10:

```
Media State . . . . . : Media disconnected
Connection-specific DNS Suffix . :
Description . . . . . : Microsoft Wi-Fi Direct Virtual Adapter #5
Physical Address. . . . . : E8-B1-94-0A-8E-10
DHCP Enabled. . . . . : Yes
Autoconfiguration Enabled . . . . : Yes
```

Etheret adapter Ethernet:

```
Connection-specific DNS Suffix . :
Description . . . . . : DisplayLink Network Adapter NCM#5
Physical Address. . . . . : 00-50-2E-00-7D-F0
DHCP Enabled. . . . . : Yes
Autoconfiguration Enabled . . . . : Yes
Link-local IPv6 Address . . . . . : fe80::c4e9:416b:3ebe:a6cb%13(Preferred)
Default Gateway . . . . . : fe80::224:1ff:fedf:699f%34
DHCPv6 IAID . . . . . : 771772598
DHCPv6 Client DUID. . . . . : 00-01-00-01-1A-B8-FC-74-88-53-2E-00-7D-F0
DNS Servers . . . . . : fec0:0:0:ffff::1%1
                        fec0:0:0:ffff::1%2
                        fec0:0:0:ffff::1%3
NetBIOS over Tcpip. . . . . : Disabled
```

Wireless LAN adapter Wi-Fi:

```
Connection-specific DNS Suffix . :
Description . . . . . : Intel(R) Dual Band Wireless-AC 7260 #2
Physical Address. . . . . : E8-B1-FC-29-7D-F0
DHCP Enabled. . . . . : Yes
Autoconfiguration Enabled . . . . : Yes
IPv4 Address. . . . . : 10.1.1.133(Preferred)
Subnet Mask . . . . . : 255.255.255.0
Lease Obtained. . . . . : Thursday, August 13, 2015 12:01:10 PM
Lease Expires . . . . . : Saturday, August 21, 2015 10:37:18 AM
Default Gateway . . . . . : 10.1.1.1
DHCP Server . . . . . : 10.1.1.1
DNS Servers . . . . . : 10.1.1.1
NetBIOS over Tcpip. . . . . : Enabled
```

Use the drop-down menus to select the answer choice that completes each statement based on the information presented in the output.
NOTE: Each correct selection is worth one point.

Answer Area

The computer has obtained [answer choice] from a DHCP server.

The computer [answer choice] access the Internet.

Answer:

Explanation: The exhibit below shows that the computer obtained its IPv4 address from a DHCP server. It also shows when the DHCP lease was obtained and when it will expire.

```

DHCP Enabled. . . . . : Yes
Autoconfiguration Enabled . . . . : Yes
IPv4 Address. . . . . : 10.1.1.133(Preferred)
Subnet Mask . . . . . : 255.255.255.0
Lease Obtained. . . . . : Thursday, August 13, 2015 12:01:10 PM
Lease Expires . . . . . : Saturday, August 21, 2015 10:37:18 AM
  
```

The IPv6 address shown below starts with 'fe80'. This is an auto-configuration address, not an address obtained from a DHCP server.

```

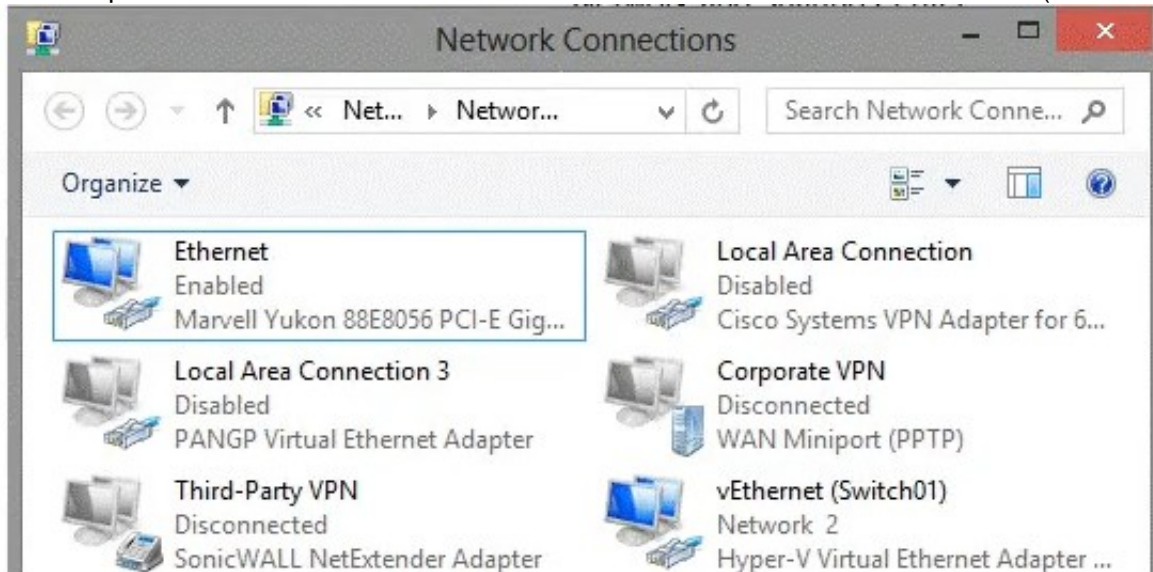
Link-local IPv6 Address . . . . . : fe80::c4e9:416b:3ebe:a6cb%13(Preferred)
  
```

The IP address of the Default Gateway is 10.1.1.1

NEW QUESTION 20

You are setting up a Windows 10 Enterprise computer.

The computer's network connections are shown in the Network connections exhibit. (Click the Exhibit button.)



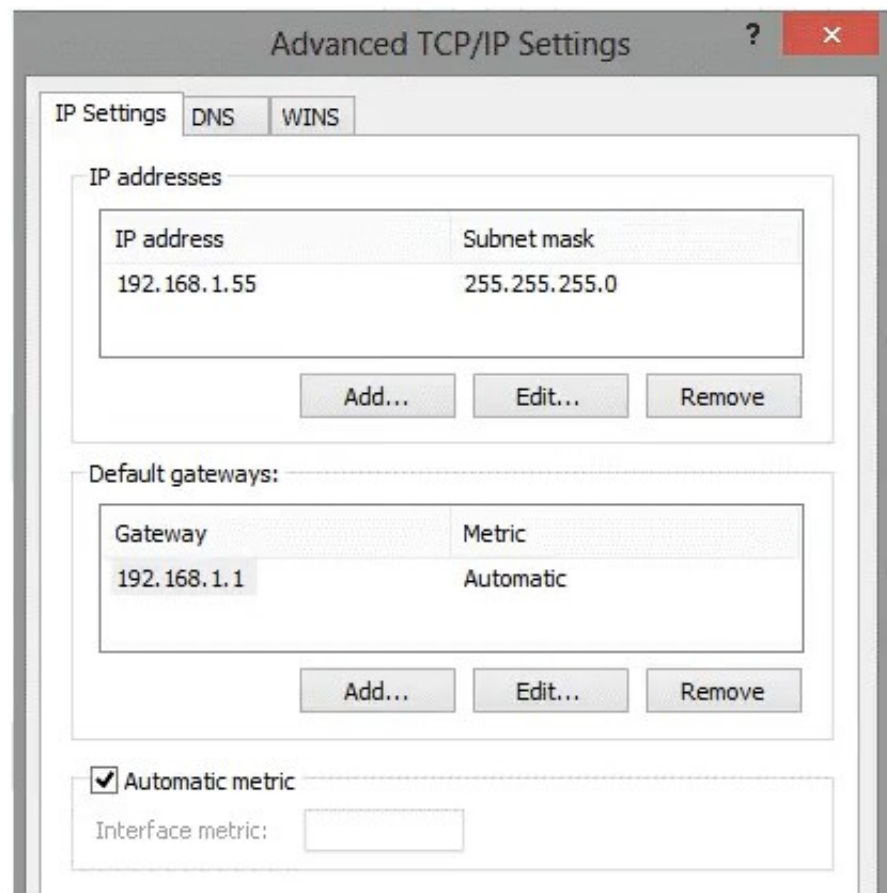
The computer's network settings are shown in the Network Settings exhibit. (Click the Exhibit button.)

```

Ethernet adapter vEthernet {Switch01}:

Connection-specific DNS Suffix  . : 
Description . . . . . : Hyper-V Virtual Ethernet Adapter #2
Physical Address. . . . . : BC-AE-C5-21-02-A3
DHCP Enabled. . . . . : No
Autoconfiguration Enabled . . . . : Yes
Link-local IPv6 Address . . . . . : fe80::4ad:8811:98c6:5f2c%17(Preferred)
IPv4 Address. . . . . : 192.168.1.55(Preferred)
Subnet Mask . . . . . : 255.255.255.0
Default Gateway . . . . . : 192.168.1.1
DHCPv6 IAID . . . . . : 314355397
DHCPv6 Client DUID. . . . . : 00-01-00-01-17-F7-1A-65-BC-AE-C5-21-02-A3
DNS Servers . . . . . : 8.8.8.8
                        8.8.4.4
NetBIOS over Tcpip. . . . . : Enabled
  
```

Advanced TCP/IP settings are shown in the Advanced TCP/IP Settings exhibit. (Click the Exhibit button.)



For each of the following statements, select Yes if the statement is true. Otherwise, select No. NOTE: Each correct selection is worth one point.

Answer Area

	Yes	No
The computer is a Microsoft Hyper-V host.	<input type="radio"/>	<input type="radio"/>
The computer has a static IP address.	<input type="radio"/>	<input type="radio"/>
The computer is a Microsoft Hyper-V virtual machine.	<input type="radio"/>	<input type="radio"/>

Answer:

Explanation: The computer has a physical network adapter.



When you enable Hyper-V on a computer, a virtual network adapter connected to a virtual switch is added.



Therefore, the computer is a Hyper-V host.
The computer has an IP address. The text in the image below shows that the network connection is not DHCP enabled. Therefore, this is a static IP address.



The computer is a Hyper-V host, not a Hyper-V virtual machine.

NEW QUESTION 23

You have a client Windows 10 Enterprise computer. The computer is joined to an Active Directory domain. The computer does not have a Trusted Platform Module (TPM) chip installed.
You need to configure BitLocker Drive Encryption (BitLocker) on the operating system drive. Which Group Policy object (GPO) setting should you configure?

- A. Allow access to BitLocker-protected fixed data drives from earlier version of Windows.
- B. Require additional authentication at startup.
- C. Allow network unlock at startup.
- D. Configure use of hardware-based encryption for operating system drives.

Answer: B

Explanation: To make use of BitLocker on a drive without TPM, you should run the gpedit.msc command. You must then access the Require additional authentication at startup setting by navigating to Computer Configuration\Administrative Templates\Windows Components\Bit Locker Drive Encryption\Operating System Drives under Local Computer Policy. You can now enable the feature and tick the Allow BitLocker without a compatible TPM checkbox.

NEW QUESTION 24

You support Windows 10 Enterprise computers that are members of an Active Directory domain. Recently, several domain user accounts have been configured with super-mandatory user profiles.

A user reports that she has lost all of her personal data after a computer restart.

You need to configure the user's computer to prevent possible user data loss in the future. What should you do?

- A. Remove the .man extension from the user profile name.
- B. Configure FolderRedirection by using the domain group policy.
- C. Configure the user's documents library to include folders from network shares.
- D. Add the .dat extension to the user profile name.

Answer: B

Explanation: Folder Redirection allows administrators to redirect the path of a folder to a new location, which can be a folder on the local computer or a directory on a network file share. Users can then work with documents on a server as if the documents were based on a local drive, but are available to the user from any computer on the network. Folder Redirection can be found under Windows Settings in the console tree by editing domain-based Group Policy via the Group Policy Management Console (GPMC).

NEW QUESTION 26

You purchase a new Windows 10 Enterprise desktop computer. You have four external USB hard drives. You want to create a single volume by using the four USB drives. You want the volume to be expandable, portable and resilient in the event of failure of an individual USB hard drive.

You need to create the required volume. What should you do?

- A. From Control Panel, create a new Storage Space across 4 USB hard drive
- B. Set resiliency type to Three-way mirror.
- C. From Control Panel, create a new Storage Space across 4 USB hard drive
- D. Set resiliency type to Parity.
- E. From Disk Management, create a new spanned volume.
- F. From Disk Management, create a new striped volume.

Answer: B

Explanation: Storage Spaces can combine multiple hard drives into a single virtual drive. To create a storage space, you'll have to connect two or more additional internal or external drives to your computer to create a storage pool. You can also specify an arbitrarily large logical size. When your existing drive begins to fill up and nears the physical limit, Windows will display a notification in the Action Center, prompting you to add additional physical storage space. Selecting the Parity resiliency type allows Windows to store parity information with the data, thereby protecting you from a single drive failure.

Topic 6, Manage data access and protection

NEW QUESTION 31

You have a computer that runs Windows 10 Enterprise that contains the following folders:



You have a local user named User1. User1 has read and execute permission to Folder1. You need to ensure that User1 can perform the following tasks:

The solution must use the principle of least privilege.

Which permissions should you assign to User1 on each folder? To answer, drag the appropriate permissions to the correct folders. Each permission may be used once, more than once, or not at all. You may need to drag the split bar between panes or scroll to view content.

Permissions

Full Control

List Folder Contents

Modify

Read

Read & Execute

Write

Answer Area

Folder2: Permission

Folder3: Permission

Folder5: Permission

Answer:

Explanation: Advanced permissions are detailed permissions that are grouped together to create the standard permissions. The permissions in this question are standard permissions.

Folder2: To create new files in a folder, you need Write permission to the folder. The 'Write' standard permission includes the 'Create files / write data' advanced permission.

Folder3: To edit existing files in a folder, you need Modify permission.

Folder5: To change the permissions of files in a folder, you need the 'Change Permissions' advanced permission. The Change Permission advanced permission is in the 'Full Control' standard permission group. Therefore, the answer for Folder5 is Full Control.

References:

<http://windows.microsoft.com/en-gb/windows/before-applying-permissions-file-folder#1TC=windows-7>

NEW QUESTION 34

You have a Windows 10 Enterprise computer.

The computer has a shared folder named C:\Marketing. The shared folder is on an NTFS volume. The current NTFS and share permissions are configured as follows.

Group name	NTFS permission	Shared folder permission
Everyone	Read and Execute	Read
Marketing	Modify	Full Control

UserA is a member of both the Everyone group and the Marketing group. UserA must access C:\Marketing from across the network. You need to identify the effective permissions of UserA to the C:\Marketing folder.

What permission should you identify?

- A. Full Control
- B. Read and Execute
- C. Read
- D. Modify

Answer: D

Explanation: UserA is a member of both the Everyone group and the Marketing group and UserA must access C:\Marketing from across the network.

When accessing a file locally, you combine the NTFS permissions granted to your account either directly or by way of group membership. The 'least' restrictive permission is then the permission that applies.

In this question, the NTFS permission is the least restrictive of Read/Execute and Modify... so Modify is the effective permission.

When accessing a folder or file across the network, you combine the effective NTFS permissions (Modify in this case) with the effective Share permissions granted to your account either directly or by way of group membership (Full Control in this case). The 'most' restrictive permission is then the permission that applies.

Modify is more restrictive than Full Control so Modify is the effective permission.

NEW QUESTION 38

You manage a network that includes Windows 10 Enterprise computers. All of the computers on the network are members of an Active Directory domain.

The company recently proposed a new security policy that prevents users from synchronizing applications settings, browsing history, favorites, and passwords from the computers with their Microsoft accounts.

You need to enforce these security policy requirements on the computers. What should you do?

- A. On the Group Policy Object, configure the Accounts: Block Microsoft accounts Group Policy setting to Users can't add Microsoft accounts.
- B. On the Group Policy Object, configure the Accounts: Block Microsoft accounts Group Policy setting to Users can't add or log on with Microsoft accounts.
- C. From each computer, navigate to Change Sync Settings and set the Sync Your Settings options for Apps, Browser, and Passwords to Off.
- D. From each computer, navigate to Change Sync Settings and set the Sync Your Settings option to Off.

Answer: B

Explanation: The computers are members of a domain so the users should be using domain user accounts. We need to block the use of Microsoft accounts.

We could use the Users can't add Microsoft accounts setting which would mean that users will not be able to create new Microsoft accounts on a computer, switch a local account to a Microsoft account, or connect a domain account to a Microsoft account.

Alternatively, we can also deny the ability to log on to a domain computer with a Microsoft account (and sync computer settings) by using the Users can't add or log on with Microsoft accounts. This will ensure that the company policy is enforced.

NEW QUESTION 42

You have a desktop computer and a tablet that both run Windows 10 Enterprise.

The desktop computer is located at your workplace and is a member of an Active Directory domain. The

network contains an Application Virtualization (App-V) infrastructure. Several App-V applications are deployed to all desktop computers.

The tablet is located at your home and is a member of a workgroup. Both locations have Internet connectivity. You need to be able to access all applications that run on the desktop computer from you tablet.

Which actions should you perform on each computer? To answer, drag the appropriate action to the correct computer. Each action may be used once, more than once, or not at all. You may need to drag the split bar between panes or scroll to view content.

Actions	Answer Area
Enable Remote Desktop.	desktop computer Action
Enable Remote Assistance.	tablet Action
Install Client Hyper-V.	
Install the Application Virtualization (App-V) Client.	
Deploy Application Virtualization (App-V) packages.	
Run the Remote Desktop Client.	

Answer:

Explanation: You can connect to your work computer by using Remote Desktop. You first need to enable Remote Desktop on the work computer. You then run the Remote Desktop Client on the home computer to connect to the work computer.

With Remote Desktop Connection, you can connect to a computer running Windows from another computer running Windows that's connected to the same network or to the Internet. For example, you can use all of your work computer's programs, files, and network resources from your home computer, and it's just like you're sitting in front of your computer at work.

To connect to a remote computer, that computer must be turned on, it must have a network connection, Remote Desktop must be enabled, you must have network access to the remote computer (this could be through the Internet), and you must have permission to connect. For permission to connect, you must be on the list of users. Before you start a connection, it's a good idea to look up the name of the computer you're connecting to and to make sure Remote Desktop connections are allowed through its firewall.

NEW QUESTION 44

A company has Windows 10 Enterprise client computers. Client computers are connected to a corporate private network. You deploy a Remote Desktop Gateway, DirectAccess, and a VPN server at the corporate main office.

Users are currently unable to connect from their home computers to their work computers by using Remote Desktop

You need to ensure that users can remotely connect to their office computers by using Remote Desktop. Users must not be able to access any other corporate network resource from their home computers.

What should you do?

- A. Configure a Virtual Private Network connection.
- B. Configure the local resource settings of the Remote Desktop connection.
- C. Configure a DirectAccess connection.
- D. Configure the Remote Desktop Gateway IP address in the advanced Remote Desktop Connection settings on each client.

Answer: D

Explanation: The solution is to deploy Remote Desktop Gateway in the office. Remote users can then connect to their computers on the office network by using Remote Desktop client on their home computers configured with the IP address of the Remote DesktopGateway.

Remote Desktop Gateway (RD Gateway) is a role service that enables authorized remote users to connect to resources on an internal corporate or private network, from any Internet-connected device that can run the Remote Desktop Connection (RDC) client. The network resources can be Remote Desktop Session Host (RD Session Host) servers, RD Session Host servers running RemoteApp programs, or computers with Remote Desktop enabled.

RD Gateway uses the Remote Desktop Protocol (RDP) over HTTPS to establish a secure, encrypted connection between remote users on the Internet and the internal network resources on which their productivity applications run.

RD Gateway provides a comprehensive security configuration model that enables you to control access to specific internal network resources. RD Gateway provides a point-to-point RDP connection, rather than allowing remote users access to all internal network resources.

Topic 8, Manage apps

NEW QUESTION 46

You support desktop computers and tablets that run Windows 8 Enterprise. All of the computers are able to connect to your company network from the Internet by using DirectAccess.

Your company wants to deploy a new application to the tablets. The deployment solution must meet the following requirements:

The application is not accessible if a user is working offline

The application is stored on an internal solid-state drive (SSD) on the tablets
The application is isolated from other applications
The application uses the least amount of disk space
You need to deploy the new application to the tablets. What should you do?

- A. Deploy the application as an Application Virtualization (App-V) packag
- B. Install the App-V 4.6 client on the tablets.
- C. Deploy the application as a published application on the Remote Desktop serve
- D. Create a Remote Desktop connection on the tablets.
- E. Install the application on a local drive on the tablets.
- F. Install the application in a Windows To Go workspace.
- G. Install Hyper-V on tablet
- H. Install the application on a virtual machine.
- I. Publish the application to Windows Store.
- J. Install the application within a separate Windows 8 installation in a virtual hard disk (VHD) file. Configure the tablets with dual boot.
- K. Install the application within a separate Windows 8 installation in a VHDX fil
- L. Configure tablets with dual boot.

Answer: B

Explanation: Deploying the application as a published application on the Remote Desktop server will use no disk space on the tablets. Users will be able to access the application by using Remote Desktop Connections. This will also ensure that the application is isolated from other applications on the tablets. We can use Remote Desktop Connection 'redirection' to ensure that the application is able to access files stored on an internal solid-state drive (SSD) on the tablets. Redirection enables access to local resources such as drives, printers etc. in a Remote Desktop Connection.

NEW QUESTION 50

You plan to deploy a Microsoft Azure RemoteApp collection by using a custom template image. The image will contain Microsoft Word and Excel Office 365 ProPlus programs.

You need to install the Word and Excel programs. The solution must minimize the amount of Internet traffic used during installation.

Which four actions should you perform in sequence? To answer, move the appropriate actions from the list of actions to the answer area and arrange them in the correct order.

Actions

Download the Office Deployment Tool.

Modify the Click-to-Run for Office 365 Configuration.xml file.

Run **setup.exe /configure**.

Download Office 365 Deployment Readiness Tool.

Run **setup.exe /packager**.

Run **setup.exe /download**.

⋮

➤

➤

➤

➤

➤

Answer Area

Answer:

Explanation: The first step is to download the Office Deployment Tool.

You then need to modify the configuration file. This will be used to specify the installation options for Word and Excel.

You then run Setup.exe from the Office Deployment Tool with the /download option to download the required software based on the options in the configuration file.

The final step is to install Word and Excel by running Setup.exe from the Office Deployment Tool with the /configure option to install the required software based on the options in the configuration file.

NEW QUESTION 52

You have a computer named Computer1 that runs Windows 10 Enterprise. Computer1 is a member of an Active Directory domain named contoso.com.

You have a line-of-business universal app named App1. App1 is developed internally.

You need to ensure that you can run App1 on Computer1. The solution must meet the following requirements: Minimize costs to deploy the app.

Minimize the attack surface on Computer1. What should you do?

- A. Have App1 certified by the Windows Store.
- B. Sign App1 with a certificate issued by a third-party certificate authority.
- C. From the Update & Security setting on Computer1, enable the Sideload apps setting.
- D. Run the Add-AppxProvisionedPackage cmdlet.

Answer: C

Explanation: To install the application, you need to 'Sideload' it. First you need to enable the Sideload apps setting. LOBW indows Store apps that are not signed by the Windows Store can be sideloaded or added to a PC in the enterprise through scripts at runtime on a per-user basis. They can also be provisioned in an image by the enterprise so that the app is registered to each new user profile that's created on the PC. The requirements to sideload the app per-user or in the image are the same, but the Windows PowerShell cmdlets you use to add, get, and remove the apps are different.

Before you can sideload LOB Windows Store apps that are not signed by the Windows Store, you will need to configure the PC.

NEW QUESTION 57

You have a server that runs Windows Server 2012 R2 server named Server1. Server1 has Remote Desktop Services (RDS) installed. You create a session collection named Session1 and publish a RemoteApp in Session1. Server1 has an application named App1. The executable for App1 is C:\Apps\App1.exe. You need to ensure that App1 is available as a RemoteApp in Session1. What command should you run? To answer, select the appropriate options in the answer area.

• • • • •

Answer Area

"Session1" -DisplayName "App1"
 "C:\Apps\App1.exe"

Answer Area

"Session1" -DisplayName "App1"
 -CollectionName
 -InformationVariable
 -UserGroup
 "C:\Apps\App1.exe"
 -FilePath
 -FileVirtualPath
 -RequiredCommandLine
 -ShowInWebAccess

Answer:

Explanation: We need to publish App1 as a RemoteApp. We do this with the New-RDRemoteApp cmdlet. The -CollectionName parameter allows us to specify the session as "Session1". The display name for the App1 will be "App1". The -FilePath parameter allows us to specify the path to the executable for App1.

NEW QUESTION 61

You have a computer that runs Windows 10 Enterprise that has a local group policy as shown in the following graphic.

Local Group Policy Editor	
File Action View Help	
Setting	
Setting	State
<input checked="" type="checkbox"/> Allow Automatic Updates immediate installation	Not configured
<input checked="" type="checkbox"/> Allow non-administrators to receive update notifications	Not configured
<input checked="" type="checkbox"/> Allow signed updates from an intranet Microsoft update service location	Not configured
<input checked="" type="checkbox"/> Always automatically restart at the scheduled time	Enabled
<input checked="" type="checkbox"/> Automatic Updates detection frequency	Enabled
<input checked="" type="checkbox"/> Configure Automatic Updates	Enabled
<input checked="" type="checkbox"/> Defer Upgrade	Not configured
<input checked="" type="checkbox"/> Delay Restart for scheduled installations	Not configured
<input checked="" type="checkbox"/> Do not adjust default option to 'Install Updates and Shut Down' in Shut Down Windows dialog box	Not configured
<input checked="" type="checkbox"/> Do not connect to any Windows Update Internet locations	Enabled
<input checked="" type="checkbox"/> Do not display 'Install Updates and Shut Down' option in Shut Down Windows dialog box	Not configured
<input checked="" type="checkbox"/> Enable client-side targeting	Enabled
<input checked="" type="checkbox"/> Enabling Windows Update Power Management to automatically wake up the system to install scheduled updates	Not configured
<input checked="" type="checkbox"/> No auto-restart with logged on users for scheduled automatic updates installations	Enabled
<input checked="" type="checkbox"/> Re-prompt for restart with scheduled installations	Not configured
<input checked="" type="checkbox"/> Reschedule Automatic Updates scheduled installations	Not configured
<input checked="" type="checkbox"/> Specify intranet Microsoft update service location	Enabled
<input checked="" type="checkbox"/> Turn on recommended updates via Automatic Updates	Not configured
<input checked="" type="checkbox"/> Turn on Software Notifications	Enabled
19 setting(s)	

Use the drop-down menus to select the answer choice that completes each statement based on the information presented in the graphic.
NOTE: Each correct selection is worth one point.

Answer Area

Windows updates will be downloaded from [answer choice].

If a user is logged into the computer and an update requires a restart, the computer will [answer choice].

Windows Server Update Services only
Microsoft Windows Update servers only
Windows Server Updates Services and Microsoft Windows Update servers

restart when the user signs out
restart within a maximum delay of 3 hours
restart within a maximum delay of 3 days

Answer:

Explanation: Windows Updates will be downloaded from Windows Server Update Services only. This is determined by the “Specify Intranet Microsoft Update Service Location” setting and the “Do not connect to any Windows Update Internet locations” setting both being ‘Enabled’.

In the “Specify Intranet Microsoft Update Service Location” setting, you can specify the name of the Windows Server Updates Services server.

If a user is logged into the computer and an update requires a restart, the computer will restart when the user signs out. This is determined by the “No auto-restart with logged on users for schedule automatic updates” setting being enabled. This group policy setting creates a registry key named NoAutoRebootWithLoggedOnUsers and sets the value of the key to 1 (enabled).

With this setting enabled, you should be aware that the computer should be restarted at the earliest opportunity in order to complete the installation of the Windows Updates.

NEW QUESTION 64

You have a computer named Computer1 that runs Windows 10 Enterprise. Computer1 is configured to receive Windows updates from the Internet. If a user is logged on to Computer1, you need to prevent Computer1 from automatically restarting without the logged on user’s consent after the installation of the Windows updates.

What should you do?

- A. Enable the Defer upgrades setting.
- B. Edit the Automatic App Update scheduled task.
- C. Configure the Choose how updates are delivered setting.
- D. Configure the Choose how updates are installed setting.

Answer: D

Explanation: In the Choose how updates are installed setting, you can use the drop-down menu to choose an option: The Schedule a restart option will allow the user to choose when the computer is restarted. Of the answers given, this is the only way to prevent Computer1 from automatically restarting without the logged on user’s consent after the installation of the Windows updates.

NEW QUESTION 67

You administer a Windows 10 Enterprise computer. The computer has File History turned on, and system protection turned on for drive C. You accidentally delete a folder named Libraries\Customers by using the Shift+Delete keyboard shortcut. You need to restore the most recent version of the folder to its original location.

Which approach should you use to restore the folder?

- A. Recycle Bin
- B. the latest restore point
- C. File History
- D. a manually selected restore point

Answer: C

Explanation: File History is similar to Previous Versions in previous versions of Windows. It takes regular backups of your data and saves them to a separate disk volume or external drive. When File History is enabled, it backs up all the system libraries and your custom libraries by default. To restore a deleted folder, you can browse to the parent folder or library and select Restore Previous Versions. The Previous Versions tab will list the previous versions that can be restored to its original location or restored to an alternative location.

NEW QUESTION 70

You administer a group of 10 client computers that run Windows 10. The client computers are members of a local workgroup. Employees log on to the client computers by using their Microsoft accounts.

The company plans to use Windows BitLocker Drive Encryption. You need to back up the BitLocker recovery key.

Which two options can you use? (Each correct answer presents a complete solution. Choose two.)

- A. Save the recovery key to a file on the BitLocker-encrypted drive.
- B. Save the recovery key in the Credential Store.
- C. Save the recovery key to OneDrive.
- D. Print the recovery key.

Answer: CD

Explanation: C: The Bitlocker recovery key is saved in your OneDrive account in the cloud. D: The recovery key can be printed.

NEW QUESTION 71

You are using sysprep to prepare a system for imaging.

You want to enable end users to customize their Windows operating system, create user accounts, name the computer, and other tasks.

Which sysprep setting should you use?

- A. /oobe
- B. /audit
- C. /generalize
- D. /unattend

Answer: A

Explanation: The /oobe option restarts the computer into Windows Welcome mode. Windows Welcome enables end users to customize their Windows operating system, create user accounts, name the computer, and other tasks. Any settings in the oobe System configuration pass in an answer file are processed immediately before Windows Welcome starts.

NEW QUESTION 75

You have set up a new wireless network for one of your prestigious clients.

The director wants to ensure that only certain designated wireless laptops can connect to the new network to prevent misuse.

What do you need to do?

- A. Use MAC address control
- B. Use IPv4 address control
- C. Use WEP
- D. Use WPA

Answer: A

Explanation: A media access control address (MAC address), also called a physical address, of a computer which is a unique identifier assigned to network interfaces for communications on the physical network segment. MAC addresses are used as a network address for most IEEE 802 network technologies, including Ethernet and WiFi.

NEW QUESTION 76

You administer computers that run Windows 10 Enterprise and are members of an Active Directory domain. The computers are encrypted with BitLocker and are configured to store BitLocker encryption passwords in Active Directory.

A user reports that he has forgotten the BitLocker encryption password for volume E on his computer. You need to provide the user a BitLocker recovery key to unlock the protected volume.

Which two actions should you perform? Each correct answer presents part of the solution.

- A. Ask the user for his computer name.
- B. Ask the user to run the manage-bde –unlock E: –pw command.
- C. Ask the user for his logon name.
- D. Ask the user for a recovery key ID for the protected volume.

Answer: AB

Explanation: A: To view the recovery passwords for a computer you would need the computer name:

In Active Directory Users and Computers, locate and then click the container in which the computer is located.

Right-click the computer object, and then click Properties.

In the Properties dialog box, click the BitLocker Recovery tab to view the BitLocker recovery passwords that are associated with the particular computer.

B: The Manage-bde: unlock command unlocks a BitLocker-protected drive by using a recovery password or a recovery key.

NEW QUESTION 81

You have 100 client Windows 10 computers. Users are NOT configured as local administrators. You need to prevent the users from running applications that they downloaded from the Internet, unless the applications are signed by a trusted publisher.

What should you configure in the Security settings from the Action Center?

- A. Virus protection
- B. User Account Control
- C. Windows SmartScreen settings
- D. Network Access Protection

Answer: C

Explanation: SmartScreen checks files that you download from the web against a list of reported malicious software sites and programs known to be unsafe. If it finds a match, SmartScreen will warn you that the download has been blocked for your safety. SmartScreen also checks the files that you download against a list of files that are well known and downloaded by many people who use Internet Explorer. If the file that you're downloading isn't on that list, SmartScreen will warn you.

NEW QUESTION 86

Your network contains an Active Directory domain. The domain contains 100 Windows 10 client computers. All of the computers secure all connections to computers on the internal network by using IPsec.

The network contains a server that runs a legacy application. The server does NOT support IPsec.

You need to ensure that some of the Windows 8 computers can connect to the legacy server. The solution must ensure that all other connections are secured by

using IPSec.
What should you do?

- A. Modify the settings of the Domain Profile.
- B. Create a connection security rule.
- C. Create an inbound firewall rule.
- D. Modify the settings of the Private Profile,

Answer: A

Explanation: A firewall profile is a way of grouping settings, such as firewall rules and connection security rules, which are applied to the computer depending on where the computer is connected. On computers running this version of Windows, there are three profiles for Windows Firewall with Advanced Security: Domain, Private, and Public. The Domain profile is applied to a network adapter when it is connected to a network on which it can detect a domain controller of the domain to which the computer is joined.

NEW QUESTION 87

Your network contains an Active Directory domain and 100 Windows 10 client computers. All software is deployed by using Microsoft Application Virtualization (App-V) 5.0.

Users are NOT configured as local administrators.

Your company purchases a subscription to Microsoft Office 365 that includes Office 365 ProPlus.

You need to create an App-V package for Office 365 ProPlus. What should you do?

- A. Run the Office Customization Tool (OCT), run the App-V Sequencer and then run Setup /Packager.
- B. Download the Office Deployment Tool for Click-to-Run, run the App-V Sequencer and then run Setup /Admin.
- C. Download the Office Deployment Tool for Click-to-Run, run Setup /Download and then run Setup /Packager.
- D. Run the Office Customization Tool (OCT), run Setup /Download and then run the App-V Sequencer.

Answer: C

Explanation: The Office Deployment Tool allows the administrator to customize and manage Office 2013 Volume License or Office 365 Click-to-Run deployments. The Office Deployment Tool Setup runs the following tasks:

Setup /Download – Downloads files to create an Office 15 installation Setup /Configure – Adds, removes, or configures an Office 15 installation Setup /Packager – Produces an Office 15 App-V package

NEW QUESTION 90

You administer computers that run Windows 8 Enterprise and are members of an Active Directory domain. Some volumes on the computers are encrypted with BitLocker.

The BitLocker recovery passwords are stored in Active Directory. A user forgets the BitLocker password to local drive E: and is unable to access the protected volume. You need to provide a BitLocker recovery key to unlock the protected volume.

Which two actions should you perform? (Each correct answer presents part of the solution. Choose two.)

- A. Ask the user to run the `manage-bde-protectors-disable e:` command.
- B. Ask the user for his or her logon name.
- C. Ask the user to run the `manage-bde-unlock E:-pw` command.
- D. Ask the user for his or her computer name.
- E. Ask the user for a recovery key ID for the protected drive.

Answer: CD

Explanation: D: To view the recovery passwords for a computer you would need the computer name:

In Active Directory Users and Computers, locate and then click the container in which the computer is located.

Right-click the computer object, and then click Properties.

In the Properties dialog box, click the BitLocker Recovery tab to view the BitLocker recovery passwords that are associated with the particular computer.

C: The `Manage-bde: unlock` command unlocks a BitLocker-protected drive by using a recovery password or a recovery key.

NEW QUESTION 91

You support Windows 10 Enterprise laptops that are part of a workgroup. An employee is unable to start Windows Mobility Center on his laptop.

You need to make it possible for the employee to use Windows Mobility Center on the laptop. What should you do?

- A. Use Add features to Windows 10 Enterprise to add Windows Mobility Center.
- B. Use Programs and Features to repair the installation of Windows Mobility Center.
- C. Use Local Group Policy Editor to set Turn off Windows Mobility Center to Not Configured.
- D. Use Turn Windows features on or off in Programs and Features to enable Windows Mobility Center.

Answer: C

Explanation: To Enable or Disable Windows Mobility Center using Group Policy

NEW QUESTION 93

Your company has Windows 10 client computers. All of the computers are managed by using Windows Intune. You need to provide a user with the ability to deploy software to the computers by using Windows Intune.

The solution must minimize the number of permissions assigned to the user. Which role should you use?

- A. User management administrator from the Windows Intune account portal
- B. Global administrator from the Windows Intune account portal

- C. Service administrator from the Windows Intune administrator console
- D. Service administrator from the Windows Intune account portal

Answer: C

Explanation: As a service administrator, you use the Microsoft Intune administrator console to manage day-to-day tasks, such as deploying applications, for Intune.

NEW QUESTION 97

Your company has a main office that has a connection to the Internet.

The company has 100 Windows 10 Enterprise computers that run Microsoft Office 2010.

You purchase a subscription to Office 365 for each user. You download the Office Deployment Tool for Click-to-Run.

You need to deploy Office 365 Pro Plus to the computers. The solution must minimize the amount of traffic over the Internet connection.

Which two actions should you perform? (Each correct answer presents part of the solution. Choose two.)

- A. On a file server, run setup.exe and specify the /download parameter.
- B. On each client computer, run setup.exe and specify the /configure parameter.
- C. On a file server, run setup.exe and specify the /configure parameter.
- D. On each client computer, run setup.exe and specify the /download parameter.

Answer: AC

Explanation: A: First we download the installation files to the server. The Office Deployment Tool Setup /Download command downloads files to create an Office 15 installation

C: The Office Deployment Tool Setup /Configure command adds, removes, or configures an Office 15 installation. This should be run on the server.

Note: To deploy Click-to-Run for Office 365 products and languages from a network share by using the Office Deployment Tool, you do the following:

Create a customized Configuration.xml file to specify which Click-to-Run for Office 365 products and languages to deploy.

Use the Office Deployment Tool with the /configure command and the customized Configuration.xml file to install Click-to-Run for Office 365 products and languages on a user's computer.

NEW QUESTION 101

A company has an Active Directory Domain Services (AD DS) domain. All client computers run Windows 10. A local printer is shared from a client computer. The client computer user is a member of the Sales AD security group.

You need to ensure that members of the Sales security group can modify the order of documents in the print queue, but not delete the printer share.

Which permission should you grant to the Sales group?

- A. Manage queue
- B. Manage this printer
- C. Print
- D. Manage documents
- E. Manage spooler

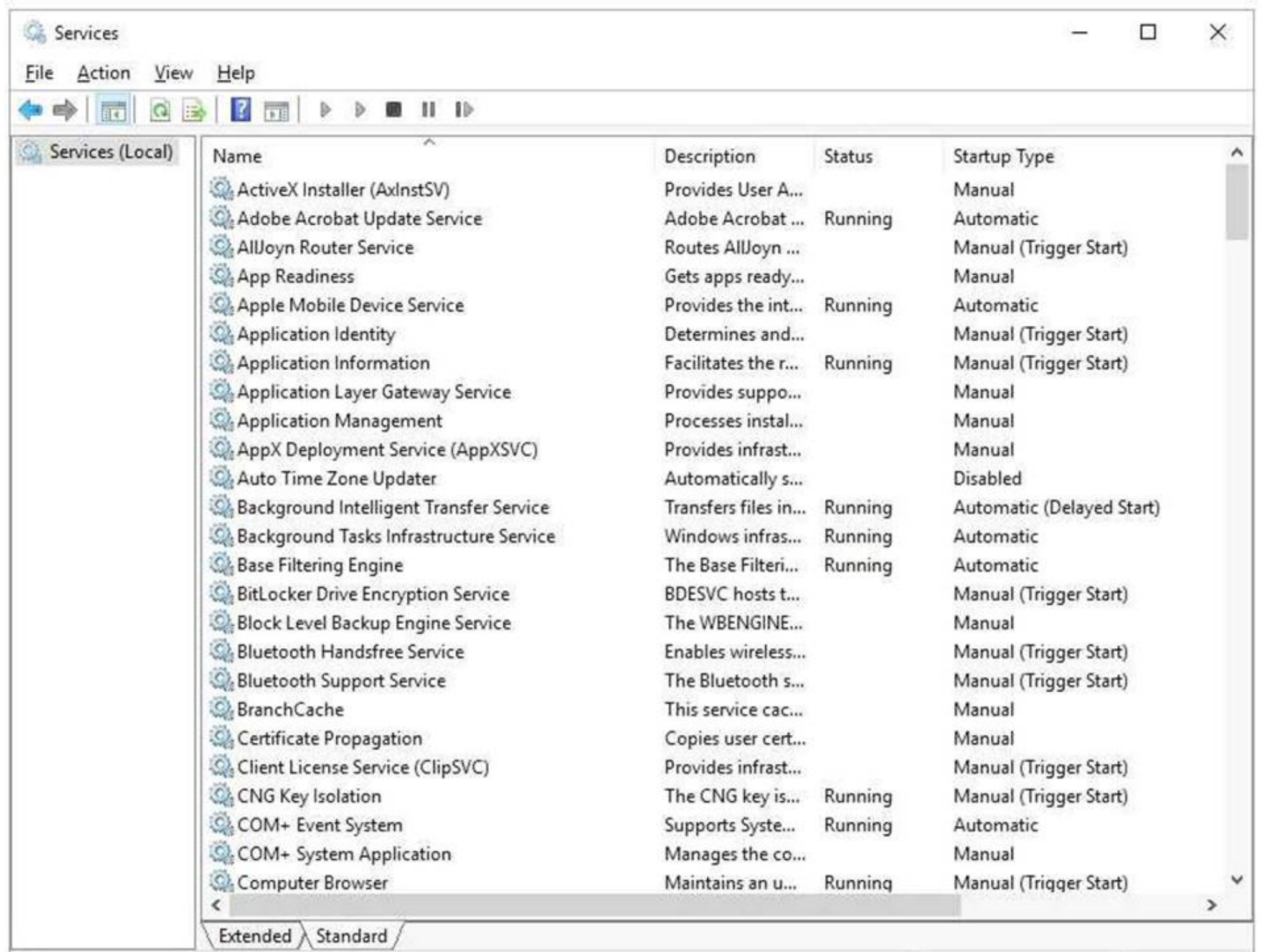
Answer: D

Explanation: With the Manage Documents permission the user can pause, resume, restart, cancel, and rearrange the order of documents submitted by all other users. The user cannot, however, send documents to the printer or control the status of the printer.

NEW QUESTION 102

You have a computer that runs Windows 10. You have an application control policy on the computer. You discover that the policy is not enforced on the computer.

You open the Services snap-in as shown in the exhibit. (Click the Exhibit button.)



You need to enforce the application control policy on the computer. What should you do?

- A. Set the Application Identity service Startup Type to Automatic and start the service.
- B. Set the Application Information service Startup Type to Automatic and start the service.
- C. Set the Application Management service Startup Type to Automatic and start the service.
- D. Set the Application Experience service Startup Type to Automatic and start the service.

Answer: A

Explanation: AppLocker, and its applications control policies, relies upon the Application Identity Service being active.

Note: When you install Windows 7, the startup type of the Application Identity Service is set to Manual. When testing AppLocker, you should keep the startup type as Manual in case you configure rules incorrectly. In that event, you can just reboot the computer and the AppLocker rules will no longer be in effect. Only when you are sure that your policies are applied correctly should you set the startup type of the Application Identity Service to Automatic.

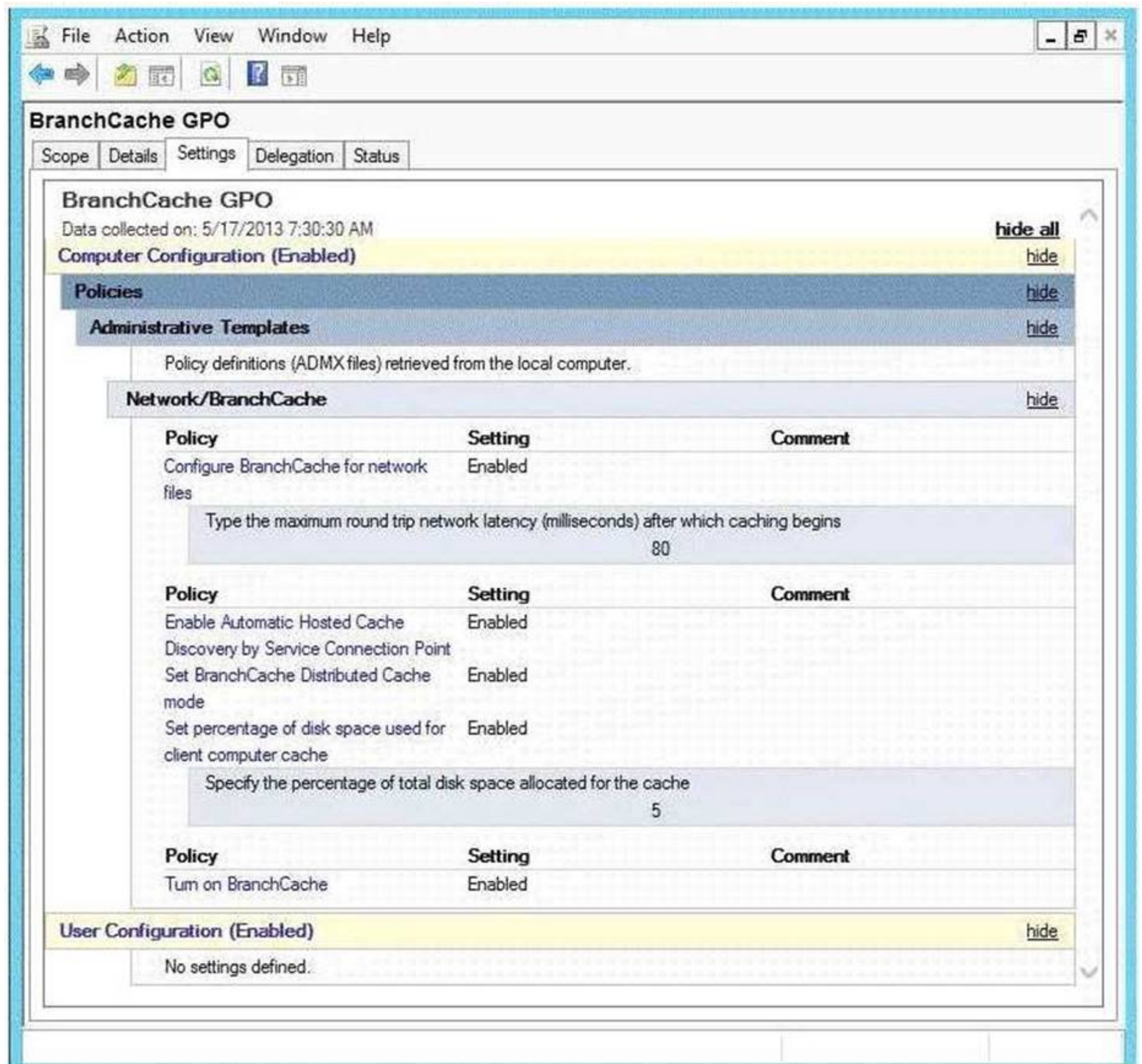
NEW QUESTION 104

HOTSPOT

Your company has a main office and two branch offices named Branch1 and Branch2. The main office contains a file server named Server1 that has BranchCache enabled. Branch1 contains a server named Server2 that is configured as a hosted cache server. The average round trip network latency between the offices is 100 milliseconds.

All client computers run Windows 8 Enterprise. All of the computers are joined to an Active Directory domain.

The BranchCache settings of all the computers are configured as shown in the following exhibit. (Click the Exhibit button.)



In the table below, identify the effective setting for the client computers in each branch office.
Note: Make one selection in each column. Each correct selection is worth one point.

Effective setting	Branch1 Computers	Branch2 Computers
Will not use BranchCache.	<input type="radio"/>	<input type="radio"/>
Will retrieve cached content from peers.	<input type="radio"/>	<input type="radio"/>
Will retrieve cached content from Server1.	<input type="radio"/>	<input type="radio"/>
Will retrieve cached content from Server2.	<input type="radio"/>	<input type="radio"/>

Answer:

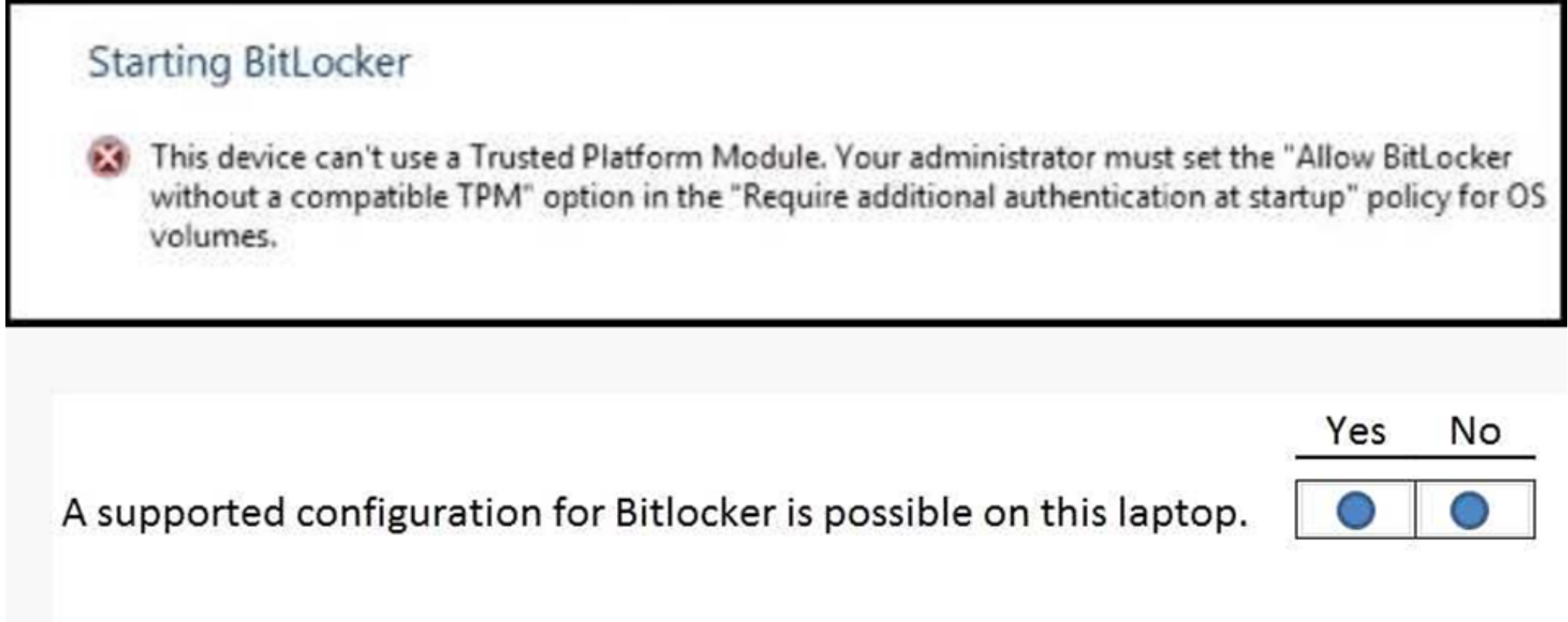
Explanation: Both Server1 and Server2 will cache content for their local clients. Note: BranchCache has two modes of operation:

References: <https://blogs.technet.microsoft.com/canitpro/2013/05/13/step-by-step- enabling-branchcache-in-microsoft-windows-server-2012/>

NEW QUESTION 108

HOTSPOT

You provide support for a small company. The company purchases a Windows 10 laptop for an employee who travels often. The company wants to use BitLocker to secure the hard drive for the laptop in case it is lost or stolen. While attempting to enable BitLocker, you receive the error message shown in the following image:



Answer:

Explanation: How to Configure Computer to Enable BitLocker without Compatible TPM: Administrators must follow the steps below to configure their Windows 8 computers to allow enabling Bit LockerDrive Encryption without compatible TPM:
References: https://answers.microsoft.com/en-us/windows/forum/windows_8- security/allow-bitlocker-without-compatible-tmp-module/4c0623b5-70f4-4953-bde4-34ef18045e4f?auth=1

NEW QUESTION 109

DRAG DROP

You administer Windows 10 Enterprise computers. Your company has a team of technical writers that is preparing technical manuals and help files. The team manager wants to ensure that the technical writers are able to restore any documents that been modified within the last year. You need to ensure that the technical writers can restore Microsoft Word files to any previous versions for up to one year. Which three actions should you perform in sequence?

Actions	Answers
Create a network share, configure NTFS, and then share permissions.	
Turn on System Protection and create a restore point.	
Turn on File History.	
Configure the Keep Saved Versions setting	

Answer:

Explanation: We need a NTFS folder.
In the Advanced settings we can configure the Keep SavedVersions settings. Finally we turn on File History.

NEW QUESTION 112

DRAG DROP

You work for a small company that uses Windows 10 computers. The computers are joined to a homegroup. You want to share an existing folder named Research. It is located in the Documents folder. You need to give users the ability to change the files in this folder. Which three actions should you perform in sequence?

Actions	Answers
Under Permission level, choose Read / Write.	
Under Choose People to Share With, add the home group.	
Right-click the Research folder.	
Enable sharing of the Documents folder in the homegroup settings.	
Under Share With, choose HomeGroup (view and edit).	

Answer:

Explanation: Box 1: Right-click on the Research folder.
Select the folder.

Box 2: Share it with the home group.

Finally we need to change the level of access, which by default is view. Box 3: Under Share With, choose HomeGroup (View and edit).

NEW QUESTION 115

DRAG DROP

You have a Windows 8 computer. You need to migrate from Windows 8 to Windows 10 while retaining as much data as possible. You load the Windows 10 media into the DVD drive.

Which three actions should you perform next in sequence?

Actions	Answers
Under installation options, choose Keep personal files.	
Run the Setup.exe file from the DVD.	
Enter the license key.	
Under installation options, choose Windows settings.	

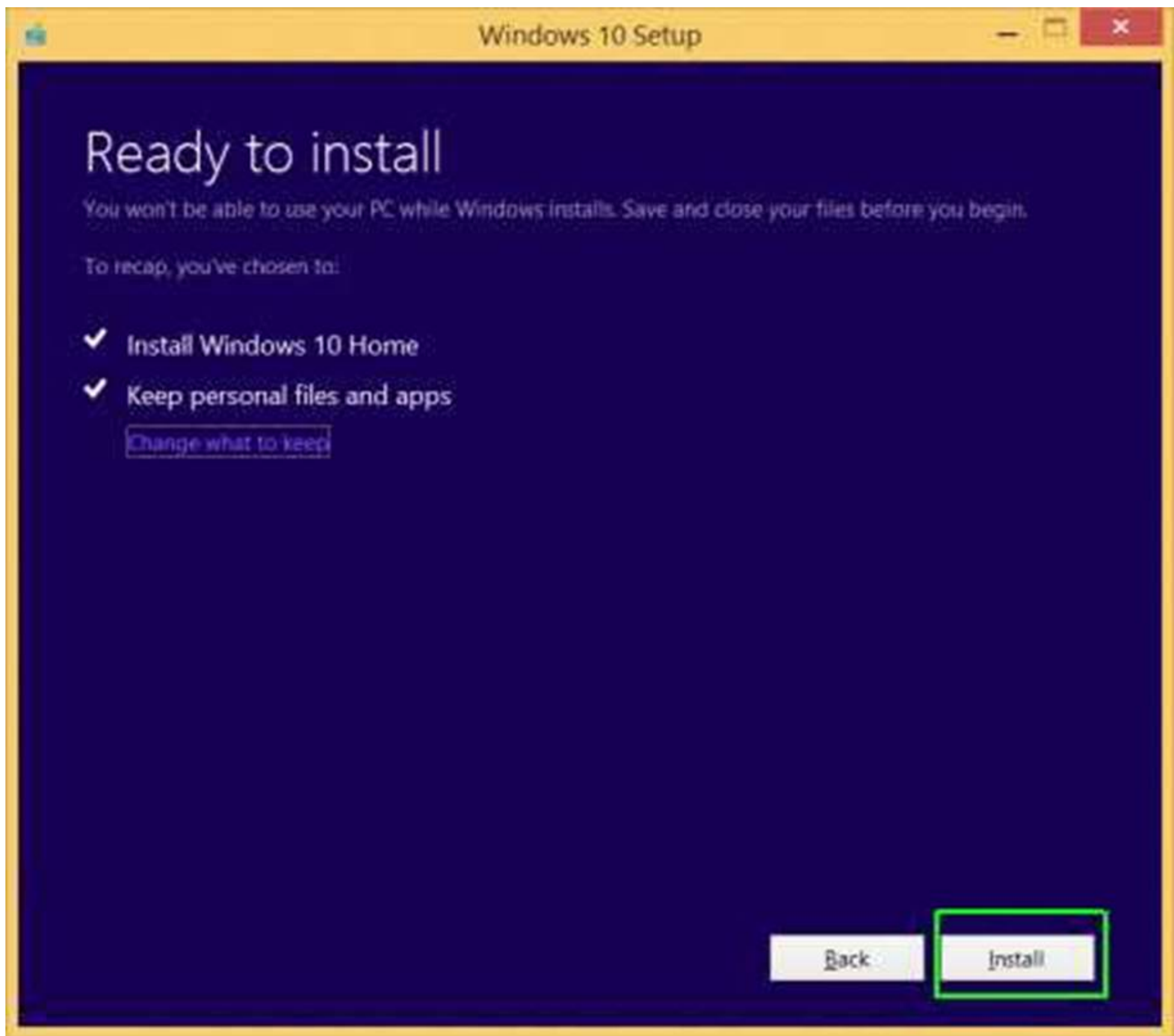
Answer:

Explanation: Box 1: Run the Setup.exe file from the DVD.

Launch setup.exe on the DVD drive to start the upgrade process. Box 2: Enter the license key.

You will be prompted for the license key.

Box 3: Under the installation, choose Keep personal files.

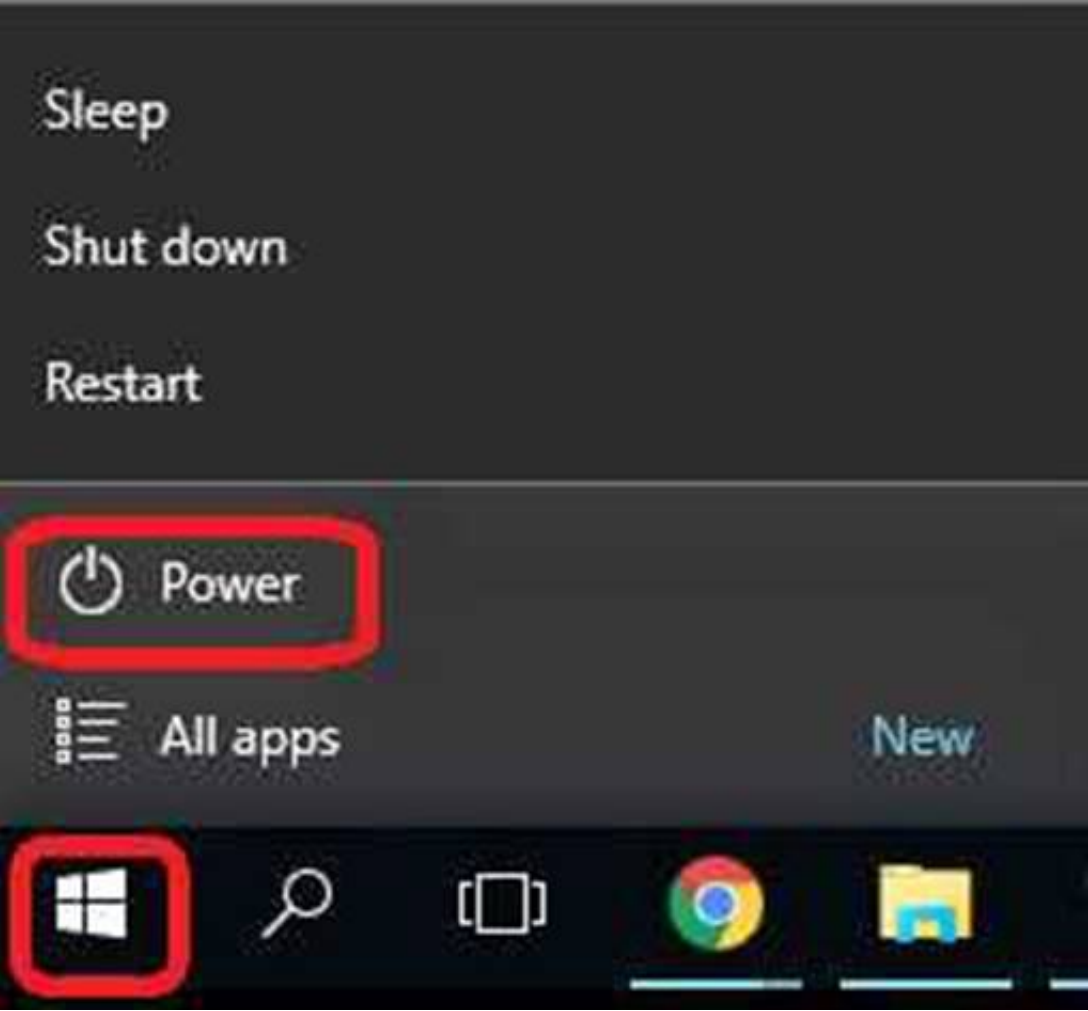


References: <http://www.laptopmag.com/articles/how-to-upgrade-windows-10>

NEW QUESTION 118

DRAG DROP

You administer Windows 8 Pro computers in your company network. You discover that Sleep, Shut down and Restart are the only options available when you select the Power button as shown in the following exhibit (Click the Exhibit button.)



You need to enable hibernation on the computer.
Which three steps should you perform in sequence?

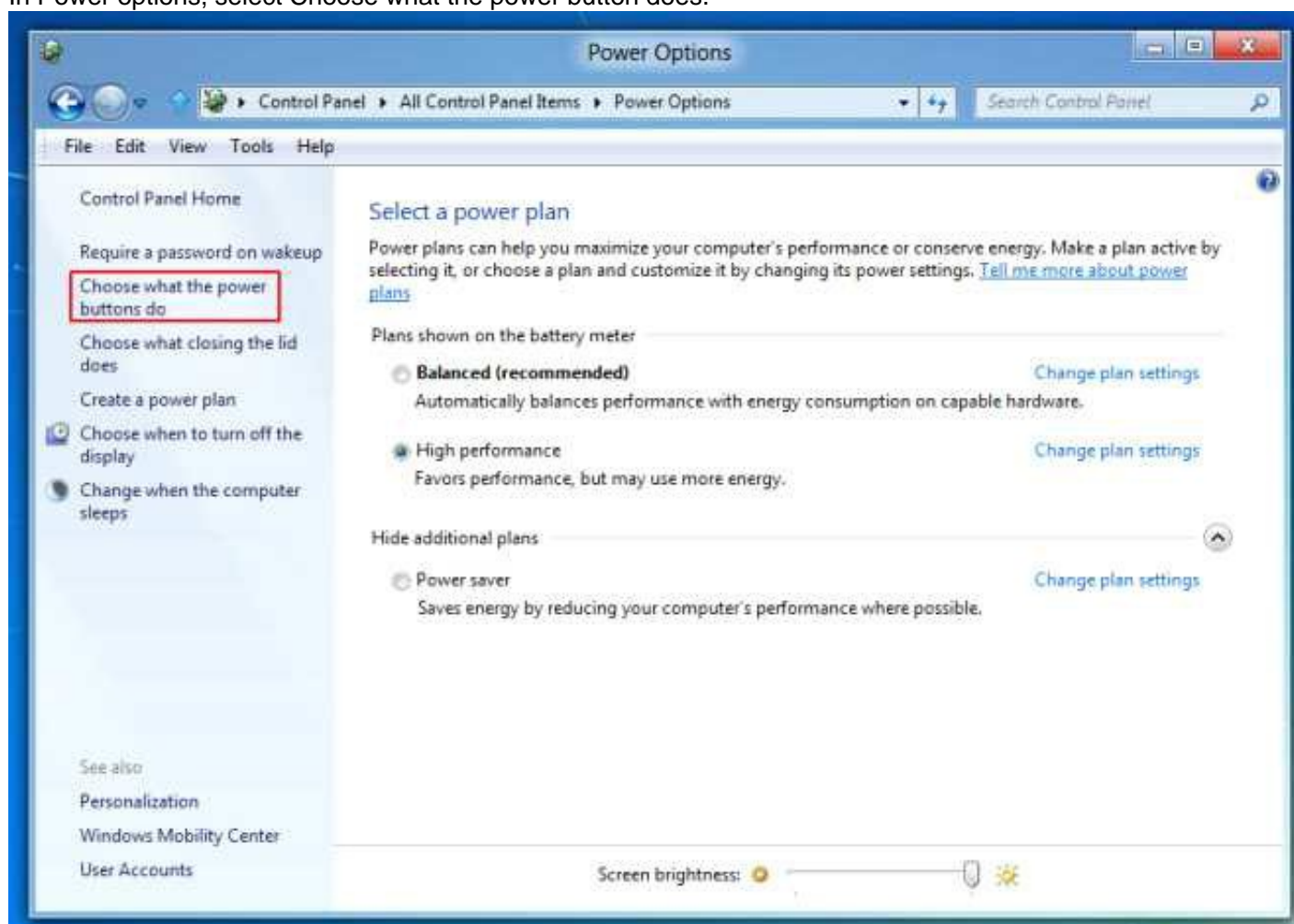
Actions	Answers
Change the When I press the power button menu settings.	
From the Charm Bar, open Change PC settings .	
Select Don't require a password	
Select What the power button does .	

Answer:

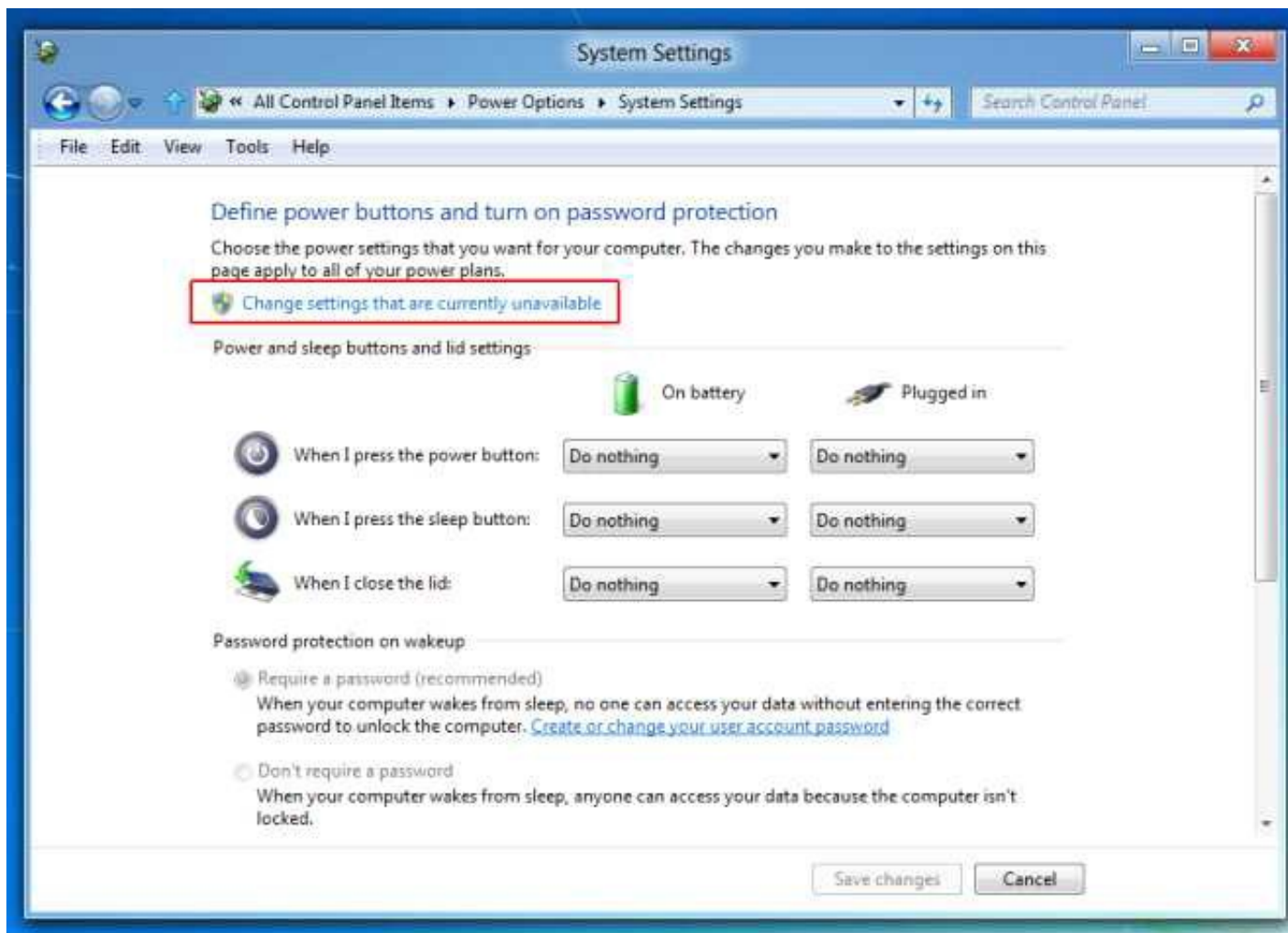
Explanation: Box 1: From the Charm Bar, open Change PC settings.
The Settings options of the Charm bar let you quickly tweak your computer's six major settings: WiFi/Network, Volume, Screen, Notifications, Power, and Keyboard/Language.



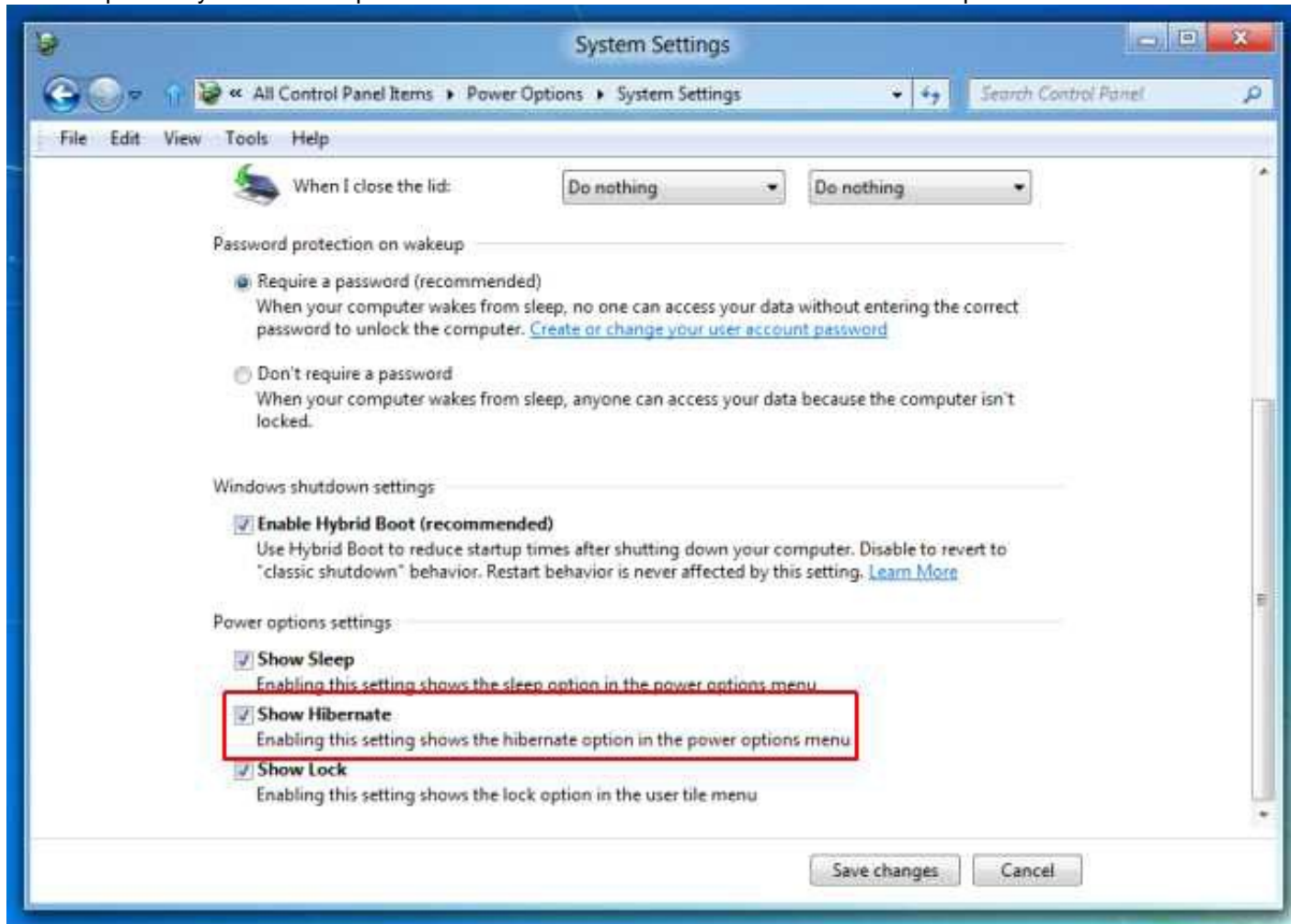
Box 2: Select What the power button does.
In Power options, select Choose what the power button does.



Box 3: Change the When I press the power button menu settings.
Now select the option that says "Change settings that are currently unavailable".



This will provide you with the option to enable Hibernation. Check Show Hibernation option to enable and click Save Changes.



References: <http://www.addictivetips.com/windows-tips/how-to-enable-windows-8- hibernate-option/>

NEW QUESTION 123

DRAG DROP

You administer desktop computers that run Windows 8 Enterprise and are members of an Active Directory domain.

A new security policy states that all traffic between computers in the research department must be encrypted and authenticated by using Kerberos V5. You need to configure the requested traffic authentication settings by using Windows Firewall with Advanced Settings.

Which three actions should you perform in sequence?

	Answer Area
Select Require authentication for inbound and outbound connection , and then for authentication method, select Computer (Kerberos V5) .	
Select Allow on app or feature through Windows Firewall .	
Click to expand Inbound Rule , and then select New Rule .	
Select the rule type Isolation , and then add the IP addresses of the research department computers.	
Click to expand Outbound Rule , and then select New Rule .	
Click to expand Connection Security Rule , and then select New Rule .	
Select the rule type Server-to-Server , and then add the IP addresses of the research department computers.	

Answer:

Explanation: (Step 1) In the Windows Firewall with Advanced Security MMC snap-in, right-click Connection Security Rules, and then click New Rule.
(Step 2) On the Rule Type page, click Isolation, and then click Next. (The Kerberos option in step 4 below is available only when you specify an Isolation or Custom rule type.)
On the Requirements page, confirm that Request authentication for inbound and outbound connections selected, and then click Next.
(Step 3) On the Authentication Method page, click Computer and user (Kerberos V5), and then click Next.
On the Profile page, clear the Private and Public check boxes, and then click Next. On the Name page, type Request Inbound Request Outbound, and then click Finish.

NEW QUESTION 126

DRAG DROP

Your network contains an Active Directory domain and 100 Windows 10 Enterprise client computers. All software is deployed by using Microsoft Application Virtualization (App-V) 5.0.

Users are NOT configured as local administrators. Your company purchases a subscription to Microsoft Office 365 that includes Office 365 ProPlus.

You need to create an App-V package for Office 365 ProPlus. Which three actions should you perform in sequence?

Actions	Answer Area
Run the App-V Sequencer.	
Download the Office Deployment Tool for Click-to-Run.	
Run Setup /Download .	
Run the Office Customization Tool (OCT).	
Run Setup /Packager .	
Run Setup /Admin .	

Answer:

Explanation: Step 1: First we download the Office Deployment Tool for Click-to Run.
Step 2: We use the tool to download files to create an Office 15 installation with the Run Setup/Download command.
Step 3: Finally we produce the App-V package with by running the Setup /Packager. The Office Deployment Tool allows the administrator to customize and manage Office 2013 Volume License or Office 365 Click-to-Run deployments.
The Office Deployment Tool Setup runs the following tasks:
Setup /Download – Downloads files to create an Office 15 installation Setup /Configure – Adds, removes, or configures an Office 15 installation Setup/Packager – Produces an Office 15 App-V package

NEW QUESTION 130**DRAG DROP**

A local printer named PRINTER1 is shared from a client computer named COMPUTER1 that run a 32-bit version of Windows 10. A workgroup contains client computers that run a 64-bit version of Windows 10.

Computers in the workgroup can't currently print to PRINTER1.

You need to ensure that the workgroup computers can print to PRINTER1.

Which three actions should you perform in sequence? To answer, move the appropriate actions to the answer area and arrange them in the correct order.

Connect the workgroup computers to PRINTER1.

Add the driver on COMPUTER1.

Obtain the 32-bit driver for PRINTER1.

Obtain the 64-bit driver for PRINTER1.

Install the driver on one computer in the workgroup.

Answer:

Explanation: You can very well add a 64-bit printer driver to a local printer on a 32-bit Windows operating system. After the 64-bit driver has been added connect the 64-bit Windows 10 computers to the printer.

NEW QUESTION 132

Your network contains an Active Directory domain. The domain contains 100 computers that run Windows 10.

Your company is developing a line-of-business application.

You plan to deploy the application by using Windows Store for Business.

You need to ensure that a developer can publish the application to the Windows Store for Business.

What should you do first?

- A. Provision a Windows Dev Center dev account for the developer.
- B. Assign the Windows Store Purchaser role to the developer.
- C. Assign the Windows Store Admin role to the developer.
- D. Provision a Microsoft Azure Active Directory (Azure AD) account for the developer.
- E. Provision a Microsoft account for the developer.

Answer: D**NEW QUESTION 136**

You administer Windows 10 Enterprise client computers in your company network.

You change settings on a reference computer by using the Windows Firewall with Advanced Security tool. You want to apply the same settings to other computers.

You need to save the Windows Firewall with Advanced Security configuration settings from the reference computer. You also need to be able to import the configuration settings into a Group Policy object later.

What should you do?

- A. Open Local Group Policy Editor, select the Windows Firewall with Advanced Security node, and then select the Export Policy action.
- B. Run the `netsh advfirewall export c:\settings.wfw` command.
- C. Run the `netsh firewall export c:\settings.xml` command.
- D. Run the `netsh advfirewall export c:\settings.xml` command

Answer: B**NEW QUESTION 137**

You administer Windows 10 Enterprise client computers in your company network. A user reports that her Internet connection is slower than usual.

You need to identify the Process Identifiers (PIDs) of applications that are making connections to the Internet.

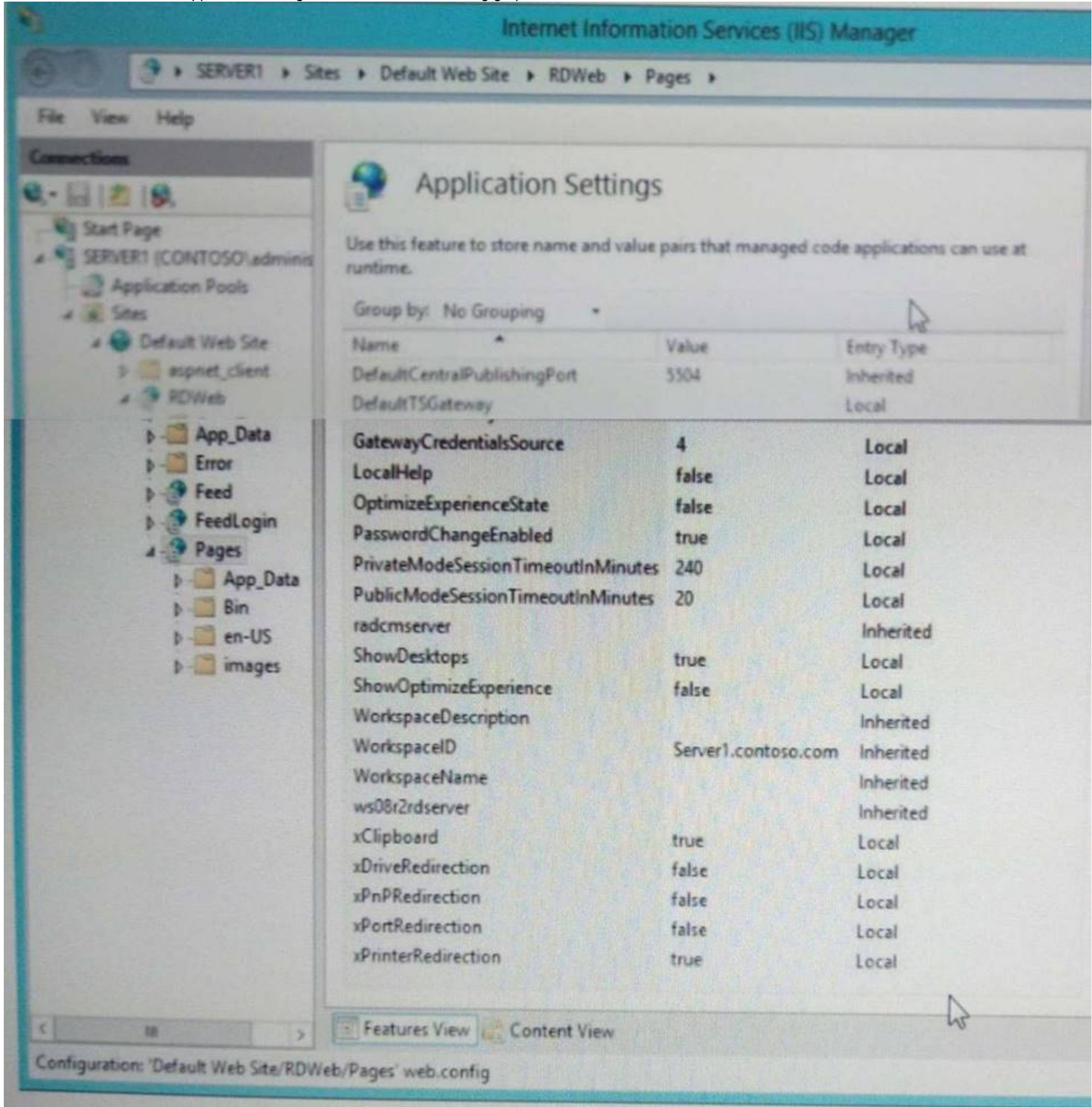
Which command should you run?

- A. `netstat -an`
- B. `netsh show netdls`
- C. `netsh set audit-logging`
- D. `netstat -o`
- E. `ipconfig /showclassid`

Answer: D**NEW QUESTION 141****HOTSPOT**

You have an Active Directory domain named contoso.com. You have a server that runs Windows Server 2012 R2 and that is a Remote Desktop server.

The RD Web Access Web application settings are shown in the following graphic.



Use the drop-down menus to select the answer choice that completes each statement based on the information presented in the graphic. NOTE: Each correct selection is worth one point.

Answer Area

When a user connects to the RDWeb site,
[answer choice] will appear.

▼

only RemoteApps
only Remote Desktop Connections
both RemoteApps and remoteDesktop Connections

Users that have Android devices can [answer
choice] from the RDWeb site.

▼

never change their passwords
only change expired passwords
only change unexpired passwords

Answer:

Explanation:

Answer Area

When a user connects to the RDWeb site,
[answer choice] will appear.

▼

only RemoteApps
only Remote Desktop Connections
both RemoteApps and remoteDesktop Connections

Users that have Android devices can [answer
choice] from the RDWeb site.

▼

never change their passwords
only change expired passwords
only change unexpired passwords

NEW QUESTION 143

You have a Microsoft Intune subscription.

You need to uninstall the Intune agent from a computer. What should you do?

- A. From the Groups node in the Microsoft Intune administration portal, click Delete.
- B. From the computer, run the provisioningutil.exe command.
- C. From the computer, run the cltui.exe command.
- D. From the computer, use Programs and Features in Control Panel.

Answer: B

Explanation: Answer A is close but incorrect. You would need to select Retire/Wipe, not Delete. References: <https://www.petervanderwoude.nl/post/uninstall-the-microsoft-intune-client/>

NEW QUESTION 147

Your network contains an Active Directory domain named contoso.com. All users have email addresses in the @adatum.com domain.

You need to ensure that users can register Windows 10 mobile devices for mobile device management (MDM). Which DNS record should you create?

- A. Enterpriseregistration.adatum.com
- B. Deviceregistration.adatum.com
- C. Deviceregistration.contoso.com
- D. Enterpriseregistration.contoso.com

Answer: D

Explanation: References: <https://technet.microsoft.com/en-us/windows/dn771709.aspx>

NEW QUESTION 151

You support Windows 10 Enterprise laptops. Microsoft BitLocker Administration and Monitoring (MBAM) is deployed on your network on a server named SERVER1. Company policy requires that laptops with MBAM client installed prompt users to enable BitLocker within 2 hours of being started. You need to make changes to the Configure MBAM Services Group Policy settings. Which two actions should you perform? Each correct answer presents part of the solution.

- A. Set Select BitLocker Recovery Information to store to Recovery password only.
- B. Set Select BitLocker Recovery Information to store to Recovery password and key package.
- C. Set Enter status reporting frequency (in minutes) to 120.
- D. Set MBAM Status reporting endpoint to SERVER1.
- E. Set MBAM Recovery and Hardware service endpoint to SERVER1.
- F. Set Enter client checking status frequency (in minutes) to 120.

Answer: EF

Explanation: References: http://www.projectleadership.net/blogs_details.php?id=3519

NEW QUESTION 152

You purchase a new Windows 10 Enterprise desktop computer. You have six external USB hard drives. You want to create a single volume by using the six USB drives. You want the volume to be expandable, portable, and resilient in the event of simultaneous failure of two USB hard drives. You need to create the required volume. What should you do?

- A. From Control Panel, create a new Storage Space across 6 USB hard drive
- B. Set resiliency type to Parity.
- C. From Disk Management, create a new striped volume.
- D. From Disk Management, create a new spanned volume.
- E. From Control Panel, create a new Storage Space across 6 USB hard drive
- F. Set resiliency type to Three-way mirror.

Answer: D

NEW QUESTION 156

Note: This question is part of a series of questions that use the same or similar answer choices. An answer choice may be correct for more than one question in the series. Each question is independent of the other questions in this series. Information and details provided in a question apply only to that question. You have a computer that runs Windows 10 and is used by 10 users. The computer is joined to an Active Directory domain. All of the users are members of the Administrators group. Each user has an Active Directory account. You have a Microsoft Word document that contains confidential information. You need to ensure that you are the only user who can open the document. What should you configure?

- A. account policies
- B. application control policies
- C. HomeGroup settings
- D. software restriction policies
- E. NTFS permissions
- F. Microsoft OneDrive
- G. share permissions
- H. Encrypting File System (EFS) settings

Answer: H

NEW QUESTION 157

Note: This question is part of a series of questions that use the same or similar answer choices. An answer choice may be correct for more than one question in the series. Each question is independent of the other questions in this series. Information and details provided in a question apply only to that question. A user successfully accesses \\server1\Sources\App1\. The user cannot access \\server1\Sources\App2\. You need to ensure that the user can access \\server1\Sources\App2\. What should you configure?

- A. Microsoft OneDrive
- B. share permissions
- C. account policies
- D. software restriction policies
- E. HomeGroup settings
- F. application control policies
- G. NTFS permissions
- H. Encrypting File System (EFS) settings

Answer: G

NEW QUESTION 159

Note: This question is part of a series of questions that use the same or similar answer choices. An answer choice may be correct for more than one question in the series. Each question is independent of the other questions in this series.

Information and details provided in a question apply only to that question.

You have a computer that runs Windows 10 and is used by 10 users. The computer is joined to an Active Directory domain. Each user has an Active Directory account. You need to ensure that all of the users can access the files located in one another's libraries.

What should you configure?

- A. Microsoft OneDrive
- B. HomeGroup settings
- C. Encrypting File System (EFS) settings
- D. NTFS permissions
- E. Account policies
- F. Share permissions
- G. Software restriction policies
- H. Application control policies

Answer: D

NEW QUESTION 162

All client computers in a company's network environment run Windows 10 Enterprise. A client computer has drives that are configured as shown in the following table.

Drive	Location	Type
C:	Internal	Dynamic
D:	Internal	Dynamic
E:	Internal	Optical
F:	External	Basic
Z:	Network	Mapped

You are choosing a backup destination for drive C. You have the following requirements:

?Ensure that the backup file is available if drive C: fails.

?Ensure that the backup file can be accessed by other computers on the network.

?Support the storage of multiple versions of system image backups. You need to select a backup destination that meets the requirements.

Which destination should you select?

- A. drive D:
- B. drive F:
- C. drive E:
- D. drive Z:

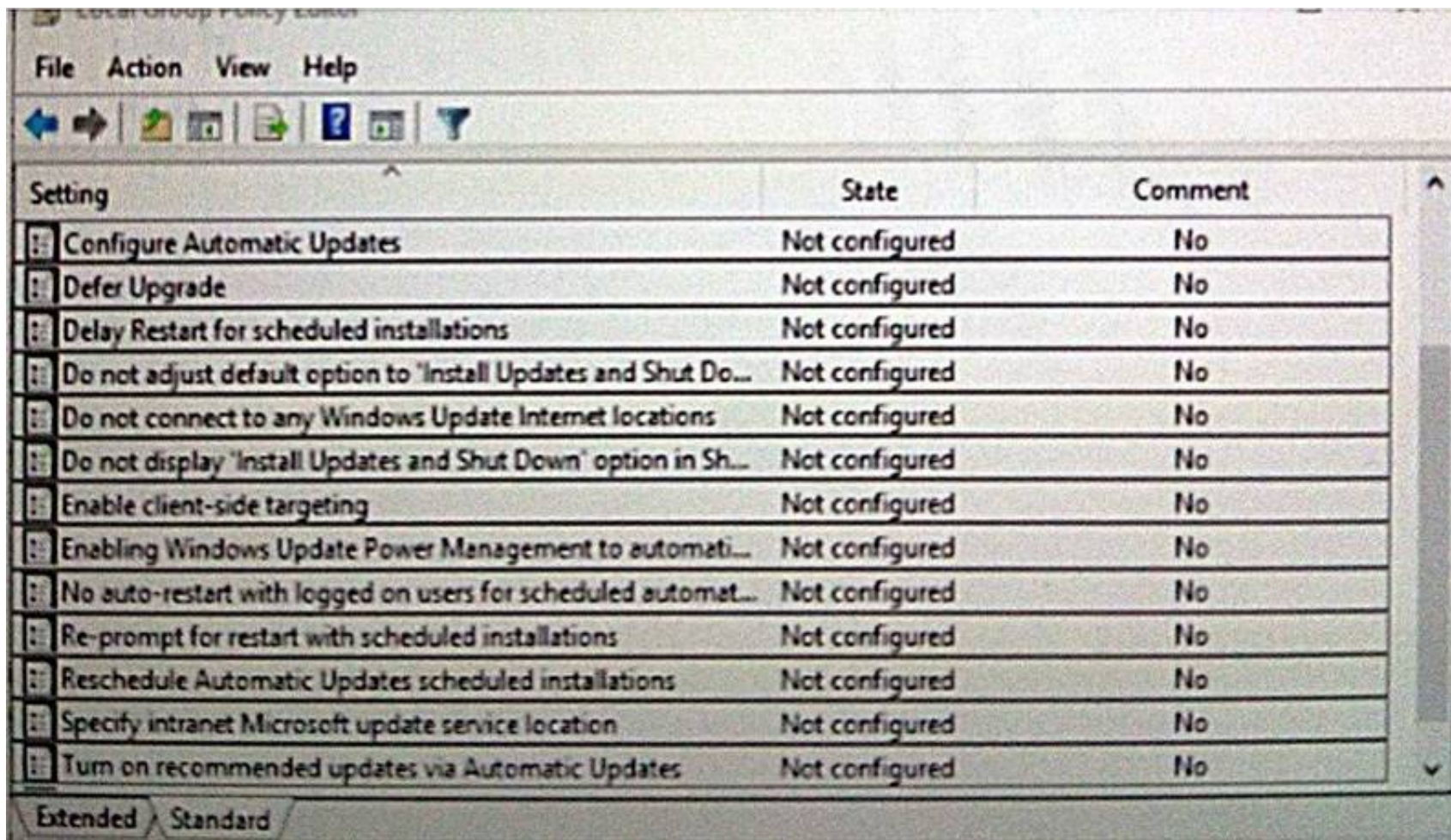
Answer: D

NEW QUESTION 167**HOTSPOT**

You have an Active Directory domain. All of the client computers in the domain run Windows 10 Enterprise.

You need to configure the client computers to download updates from a Windows Server Update Service server.

Which two settings should you configure? To answer, select the appropriate settings in the answer area.



Setting	State	Comment
Configure Automatic Updates	Not configured	No
Defer Upgrade	Not configured	No
Delay Restart for scheduled installations	Not configured	No
Do not adjust default option to 'Install Updates and Shut Do...	Not configured	No
Do not connect to any Windows Update Internet locations	Not configured	No
Do not display 'Install Updates and Shut Down' option in Sh...	Not configured	No
Enable client-side targeting	Not configured	No
Enabling Windows Update Power Management to automati...	Not configured	No
No auto-restart with logged on users for scheduled automat...	Not configured	No
Re-prompt for restart with scheduled installations	Not configured	No
Reschedule Automatic Updates scheduled installations	Not configured	No
Specify intranet Microsoft update service location	Not configured	No
Turn on recommended updates via Automatic Updates	Not configured	No

Answer:

Explanation: Configure Automatic Updates
Specify intranet Microsoft update service location

NEW QUESTION 170

You have a computer that runs Windows 10.
You install a second hard disk drive on the computer and you create a new volume named E.
You need to enable system protection for volume E. What should you use?

- A. the Wbadmin command
- B. the Settings app
- C. System Properties
- D. the Set-Volume cmdlet

Answer: C

NEW QUESTION 175

You are configuring two Windows 10 Enterprise client computers:
A desktop computer named COMPUTER1 and a portable computer named COMPUTER2.
You have the following requirements:
?Store all personal data in a folder named Data on COMPUTER1.
?Ensure that you can access all personal data from COMPUTER2, even when a network connection is unavailable.
?Synchronize personal data between the computers twice a day. You need to configure the computers to meet the requirements.
Which two actions should you perform? Each correct answer presents part of the solution.

- A. From COMPUER2, connect to COMPUTER1 and configure the Data folder to always be available offline.
- B. From COMPUTER1, connect to COMPUTER2 and configure the Data folder to always be available offline.
- C. In Sync Center, configure a schedule for offline files.
- D. From COMPUTER2, map a network drive to the Data folder onCOMPUTER1.
- E. In Sync Center, set up a new sync partnership.

Answer: CE

NEW QUESTION 178

A company has Windows 10 Enterprise computers in an Active Directory Domain Services (AD DS) domain.
A computer named COMPUTER1 has a shared printer named PRINTER1 installed and has Remote Desktop enabled. A user named Intern is a member of a security group named Sales. The Sales group is a member of the Remote Desktop Users group on COMPUTER1. Only the Sales group has access to PRINTER1.
You need to configure COMPUTER1 to meet the following requirements:
?Allow only Intern to establish Remote Desktop connections to COMPUTER1.
?Allow Intern to print to PRINTER1. What should you do?

- A. Assign Intern the Deny log on user right by using the Remote Desktop Services user right.
- B. Assign Intern the Deny access to this computer from the network user righ
- C. Assign the Sales group the Allow log on locally user right.
- D. Remove Intern from the Sales group.
- E. Remove the Sales group from the Remote Desktop Users group and add Intern to the Remote Desktop Users group.

Answer: D

NEW QUESTION 183

A company has an Active Directory Domain Services (AD DS) domain. All client computers run Windows 10 Enterprise and joined to the domain. You have the following requirements:

- ?Ensure that files in shared network folders are available offline.
- ?Maximize efficiency for users who connect to shared network folders from a mobile device

You need to configure Group Policy settings to meet the requirements. What should you do first?

- A. Enable the Enable file synchronization on costed networks policy setting.
- B. Enable the Synchronize all offline files when logging on policy settings.
- C. Enable and configure the Configure slow-link mode policy setting.
- D. Enable and configure the Specify administratively assigned Offline Files policy setting.

Answer: C

Explanation: References: <https://technet.microsoft.com/en-us/library/hh968298.aspx>

NEW QUESTION 185

Your company has a standard power scheme for the sales team. You are replacing a laptop for a sales associate. You import the power scheme onto the new laptop. You need to apply the power scheme. What should you do?

- A. Modify the power scheme under Power and Sleep settings.
- B. Run the gpupdate /F command.
- C. Run the powercfg /S command.
- D. Modify the advanced power settings.

Answer: C

NEW QUESTION 186

You manage a client Windows 10 Enterprise computer named Computer1. You have a OneDrive synchronized folder that contains .pdf files. You need to ensure that you can restore previous versions of the .pdf files. What should you do?

- A. Enable File History.
- B. Configure System Restore.
- C. Configure Computer1 as a trusted PC.
- D. Enable Sync your settings on Computer1.

Answer: A

NEW QUESTION 188

DRAG DROP

You administer Windows 10 Enterprise tablets and virtual desktop computers that are joined to an Active Directory domain. Your company provides virtual desktop computers to all users. Employees in the sales department also use tablets, sometimes connected to the company network and sometimes disconnected from the company network. You want sales department employees to have the same personal data, whether they are using their virtual desktop or their tablets. You need to configure the network environment to meet the requirements. Which three actions should you perform in sequence? To answer, move the appropriate actions from the list of actions to the answer area and arrange them in the correct order. More than one order to answer choices may be correct. You will receive credit for any of the correct orders you select.

Actions

- Enable slow-link mode for the tablets.
- Create a network share.
- Configure offline files for the tablets.
- Disable offline files on the network share.
- Configure folder redirection for the employees' domain accounts to the network share.
- Specify the file share for which you want to enable Always Offline mode and set the value to 1.
- Set the primary computer for all employees from the sales department.

Answer Area



Answer:

Explanation: Create a network share.

Configure offline files for the tablets.

Configure folder redirection for the employees' domain accounts to the network share.

References: [https://technet.microsoft.com/en-us/library/cc732275\(v=ws.11\).aspx](https://technet.microsoft.com/en-us/library/cc732275(v=ws.11).aspx)

NEW QUESTION 191

DRAG DROP

You have a computer named Client1 that runs Windows 10 Enterprise. Client1 is a member of an Active Directory domain.

A domain administrator provisions a certificate template for a virtual smart card logon.

In the BIOS of Client1, you enable the Trusted Platform Module (TPM). You need to enable the virtual smartcard logon on Client1.

Which three actions should you perform in sequence? To answer, move the appropriate actions from the list of actions to the answer area and arrange them in the correct order.

Actions

Run the **tpmvscmgr.exe** command.

Use the Certificate Enrollment wizard.

Run the **vaultcmd.exe** command.

Run the **tpmunit.exe** command.

Run the **certmgr.exe** command



Answer Area



Answer:

Explanation: Run the tpmunit.exe command.

Run the tpmvscmgr.exe command. Use the Certificate Enrolment wizard.

References: [https://technet.microsoft.com/en-us/library/cc753140\(v=ws.11\).aspx](https://technet.microsoft.com/en-us/library/cc753140(v=ws.11).aspx)

<http://ss64.com/nt/run.html>

[https://technet.microsoft.com/en-us/library/cc730689\(v=ws.11\).aspx](https://technet.microsoft.com/en-us/library/cc730689(v=ws.11).aspx)

NEW QUESTION 195

You have an unsecured wireless network for users to connect to from their personal Windows 10 devices.

You need to prevent Wi-Fi Sense from sharing information about the unsecured wireless network.

What should you do?

A. Configure the SSID of the unsecured wireless to contain _optout.

B. Instruct the users to disable Internet Protocol Version 6 (TCP/IPv6) on their wireless network adapters.

C. Configure the SSID of the guest wireless to be hidden.

D. Instruct the users to turn off Network Discovery on their devices.

Answer: A

Explanation: References: <http://www.pcworld.com/article/2951824/windows/how-to-disable-windows-10s-wi-fi-sense-password-sharing.html>

NEW QUESTION 200

You have a computer that runs Windows 10.

You need to block all outbound and inbound communications that occur over TCP 9997, TCP 9999, and TCP 4000.

What is the minimum number of rules that you must create?

A. 1

B. 2

C. 3

D. 6

Answer: D

Explanation: References: [https://technet.microsoft.com/en-us/library/dd421709\(v=ws.10\).aspx](https://technet.microsoft.com/en-us/library/dd421709(v=ws.10).aspx)

NEW QUESTION 202

You have a laptop that has connections for three WiFi network named WiFi1, WiFi2, and WiFi 3. You need to ensure that the laptop connects to WiFi1 when multiple WiFi1 networks are available. What should you do?

- A. From Netsh, configure the WLAN context.
- B. From Network Connections in Control Panel, modify the bindings for the WiFi.
- C. From the Windows Settings app, configure the Wi-Fi Sense settings.
- D. From Network Connections in Control Panel, modify the network provider order.

Answer: D

Explanation: References:

<http://www.quepublishing.com/articles/article.aspx?p=2455390&seqNum=3>

NEW QUESTION 204

You have a Remote Desktop Session Host (RD Session Host) server. The server is accessible from the internal network. To access the server remotely, you must connect to a Remote Desktop Gateway (RD Gateway) server. On a laptop, you successfully configure a Remote Desktop connection that you use to access the RD Session Host server from the internal network. From your home, you attempt to connect to the RD Session Host server by using the Remote Desktop connection, but the connection fails. You need to connect to the RD Session Host server. What should you configure on the laptop?

- A. the Remote Assistance settings in System Properties.
- B. the Connect from anywhere settings in Remote Desktop Connection.
- C. the Performance settings in Remote Desktop Connection.
- D. the Remote Desktop settings in System Properties.

Answer: B

Explanation: References: [https://technet.microsoft.com/en-us/library/cc770601\(v=ws.11\).aspx](https://technet.microsoft.com/en-us/library/cc770601(v=ws.11).aspx)

NEW QUESTION 205

HOTSPOT

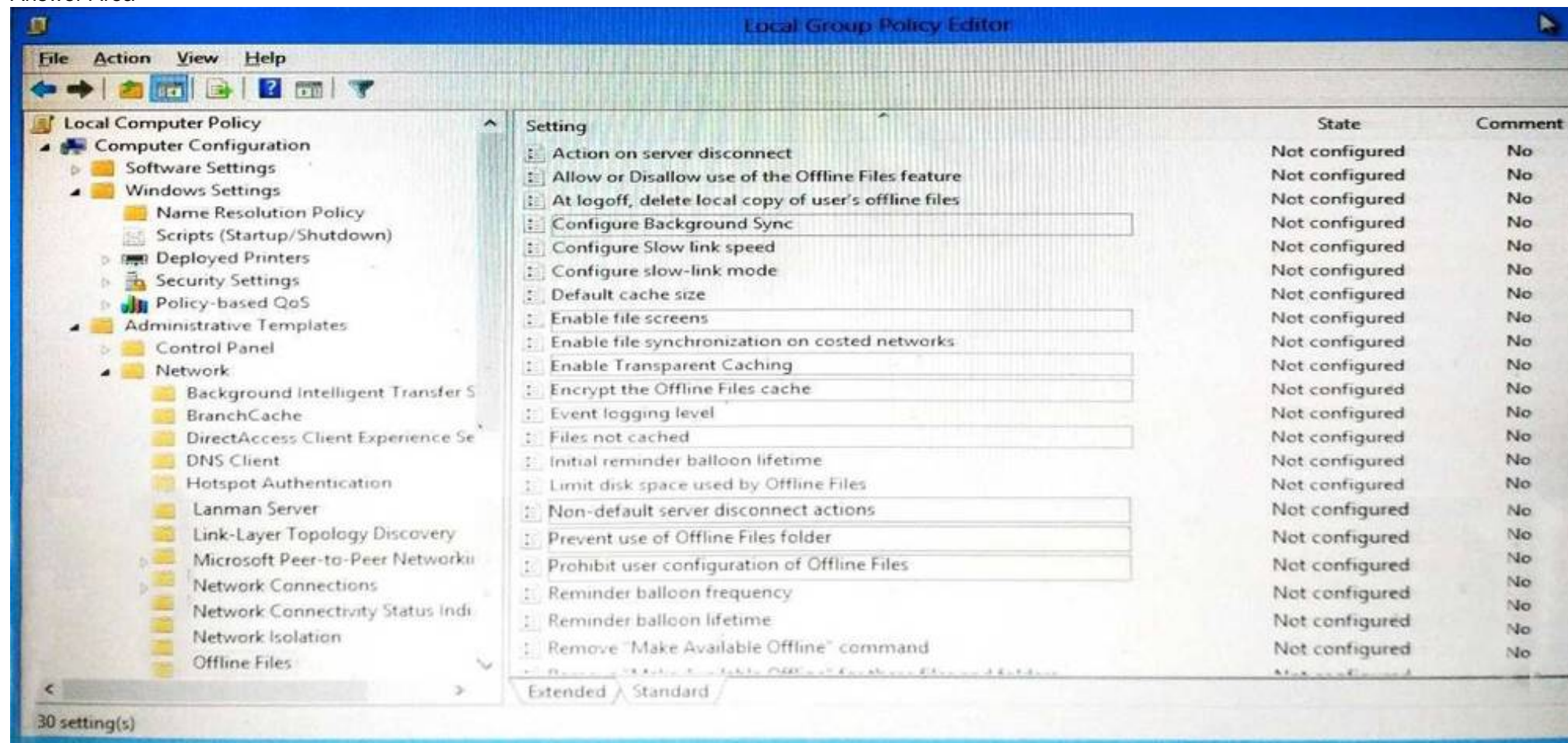
You install Windows 10 Enterprise on a new laptop that will be shipped to a remote user. You logon to the laptop with the user credentials, map network drives, and configure the network drives to be always available offline.

Company policy requires that files with a .db1 extension should be excluded from offline file synchronization.

You need to prevent the user from creating files with a .db1 extension on the mapped drives.

In the Local Group Policy Editor, which setting should you configure? To answer, select the appropriate setting in the answer area.

Answer Area



Answer:

Explanation: Enable file screens.

References: <https://www.windows-security.org/1941654bad9040dfcb8ffaba2724b014/enable-file-screens>

NEW QUESTION 208

You have a computer that runs Windows 10.
You need to ensure that the next time the computer restarts, the computer starts in safe mode.
What should you use?

- A. the System Configuration utility
- B. the Restore—Computer cmdlet
- C. the Bcdboot command
- D. System in Control Panel

Answer: A

Explanation: References: <http://www.digitalcitizen.life/4-ways-boot-safe-mode-windows-10>

NEW QUESTION 210

You have a Windows 10 Enterprise computer that has File History enabled. You create a folder named Data in the root of the C: drive.
You need to ensure that Data is protected by File History.
What are two possible ways to achieve the goal? Each correct answer presents a complete solution.

- A. From File Explorer, include Data in an existing library.
- B. Modify the Advanced settings from the File History Control Panel item.
- C. From File Explorer, create a new library that contains Data.
- D. From File Explorer, modify the system attribute of Data.

Answer: AC

Explanation: References: <http://www.digitalcitizen.life/introducing-windows-8-how-backup-data-file-history>

NEW QUESTION 211

You have a standalone Windows 10 Enterprise computer that has a single hard drive installed and configured.
You need to identify which storage devices can have content backed up by using File History.
What should you identify?

- A. A writable Blu-ray disc
- B. A writable DVD disc
- C. An internal drive that is formatted NTFS
- D. An SD card that is formatted FAT32

Answer: D

Explanation: References: <http://www.laptopmag.com/articles/back-files-file-history-windows-10>

NEW QUESTION 212

You plan to deploy a Microsoft Azure Remote App collection by using a custom template image. The image will contain Microsoft Office 365 apps. The image will be used to deploy a collection that will be accessed by 50 users.
You need to identify licensing requirements for the deployment.
Which two requirements should you identify? Each correct answer presents part of the solution.

- A. An activated Office 365 ProPlus installation
- B. Windows client access licenses (CALs) assigned to the users
- C. Office 365 ProPlus licenses assigned to the users
- D. Remote Desktop client access licenses (CALs) assigned to the users
- E. Office 365 Enterprise E3 service plan

Answer: A

Explanation: References: <https://docs.microsoft.com/en-us/azure/remotapp/remotapp-licensing>

NEW QUESTION 217

Note: This question is part of a series of questions that use the same or similar answer choices. An answer choice may be correct for more than one question in the series. Each question is independent of the other questions in this series. Information and details in a question apply only to that question.
You have a laptop that is joined to an Active Directory domain. You establish a WiFi connection to a customer's WiFi network.
You need to identify whether the current network location of the WiFi connection is private or public.
Which Control Panel application should you use?

- A. Phone and Modem
- B. RemoteApp and Desktop Connections
- C. System
- D. Credential Manager
- E. Work Folders
- F. Power Options
- G. Sync Center
- H. Network and Sharing Center

Answer: H

NEW QUESTION 220

You have 100 Windows computers that are managed by using Microsoft Intune.

You need to ensure that when a new critical update is released, the update is approved automatically and deployed to the computers within 24 hours of approval. What should you do from the Microsoft Intune administration portal?

- A. From the updates node, select Critical Updates, and then modify the Approval settings.
- B. From the Admin node, click Enrollment Rules, and then modify the device enrollment rules.
- C. From the Policy node, click Configuration Policies, and then create a new Windows policy.
- D. From the Policy node, click Compliance Policies, and then create a new compliance policy.

Answer: A

Explanation: References: <https://docs.microsoft.com/en-us/intune/deploy-use/keep-windows-pcs-up-to-date-with-software-updates-in-microsoft-intune>

NEW QUESTION 222

You administer Windows 10 Enterprise client computers in your company network. A computer that is used by non-administrator users has a directory named C:\Folder1. A shared collection of Microsoft Excel files is stored in the C:\Folder1 directory, with non-administrator users being granted modify permissions to the directory.

You discover that some files have been incorrectly modified by a user.

You need to determine which users are making changes to the files in the directory. Which two actions should you perform? Each correct answer presents part of the solution.

NOTE: Each correct selection is worth one point.

- A. Set local policy: Computer Configuration\Windows Settings\SecuritySettings\Local Policies\Audit Policy\Audit object access to Failure.
- B. From the Auditing Entry for Folder1, set the Principal to Everyone, and then set the Type to Failure for the Modify permission.
- C. From the Auditing Entry for Folder1, set the Principal to Guests, and then set the Type to Success for the Modify permission.
- D. Set local policy: Computer Configuration\Windows Settings\Security Settings\Local Policies\Audit Policy\Audit object access to Success.
- E. From the Auditing Entry for Folder1, set the Principal to Guests, and then set the Type to Failure for the Modify permission.
- F. From the Auditing Entry for Folder, set the Principal to Everyone, and then set the Type to Success for the Modify permission.

Answer: DF

NEW QUESTION 223

DRAG DROP

As part of its upgrade to Windows 10 Enterprise, your company is implementing additional security controls relating to data access.

You need to implement a solution that meets the following requirements:

?Secure all data on local hard drives.

?Limit users' ability to modify files.

Which feature should you use to meet each requirement? To answer, drag the appropriate feature or features to the correct requirement or requirements. Each feature may be used once, more than once, or not at all. You may need to drag the split bar between panes or scroll to view content.

NOTE: Each correct selection is worth one point.

Features

NTFS Permissions

Remote Business
Data Removal

EFS

BitLocker

Answer Area

Secure all data on
local hard drives.

Limit users' ability to
modify files.

Answer:

Explanation:

Features

NTFS Permissions

Remote Business
Data Removal

EFS

BitLocker



Answer Area

Secure all data on
local hard drives.

Limit users' ability to
modify files.

BitLocker

NTFS Permissions

NEW QUESTION 224

You provide IT support for a small startup company.

The company wants users to have Read and Write permissions to the company's shared folder. The network consists of a workgroup that uses Windows 10 Enterprise computers. You add each user to a group named NetworkUsers.

You need to grant permissions to the share. You have the following requirements:

?All users must have Read and Write access to existing files.

?Any new files must allow the creator to modify the new file's permissions.

Which two actions should you take? Each correct answer presents part of the solution.

- A. Grant Modify permissions to the NetworkUsers group on the shared folder.
- B. Grant Full Control permissions to the Domain Admins group on the shared folder.
- C. Grant List and Execute permissions to the NetworkUsers group on the shared folder.
- D. Grant Full Control permissions to the Creator Owner group on the shared folder.

Answer: AD

NEW QUESTION 228

A company has Windows 10 Enterprise client computers. Finance department employees store files in the C:\Finance directory. File History is on.

A Finance department employee attempts to restore a file to a previous version by using File History. The file is not available to restore.

You need to establish why the file history is not available and ensure that it is available in the future.

Which two actions should you perform? Each correct answer presents part of the solution.

NOTE: Each correct selection is worth one point.

- A. Review the File History backup log.
- B. Restore the data files from the Previous Versions tab located in the folder properties.
- C. Set the Protection Settings for drive C to On.
- D. Move the file into a library.

Answer: AD

NEW QUESTION 229

You administer Windows 10 Enterprise client computers in your company network.

You need to configure a backup and recovery solution that meets the following requirements:

?Recovers the system if it doesn't start.

?Recovers the system if the hard drive fails.

Which two actions should you perform? Each correct answer presents part of the solution.

NOTE: Each correct selection is worth one point.

- A. Create a system repair disk.
- B. Create a storage space.
- C. Turn on File History.
- D. Configure system protection.
- E. Create a system image backup.

Answer: AE

NEW QUESTION 233

You are the desktop administrator for a small company.

The company modifies its policy for retaining company financial documents from six months to three years. You currently use File History, retaining files for six months and saving copies of files every 20 minutes.

You need to adjust your current backup solution to accommodate the policy change. What should you do?

- A. Set the Keep Saved Versions option in File History to Forever.
- B. Set the backup solution to Recovery model.
- C. Set the Save Copies of Files frequency to Daily.
- D. Set the File History log file setting to Archive the log when full, do not overwrite events.

Answer: A

Explanation: You can select one, two years or forever; there is no option for three years. Therefore, the only option is to keep the files forever.

NEW QUESTION 237

DRAG DROP

You administer Windows 7 and Windows 8 client computers in your company network.

You add 100 new client computers that have Windows 10 Enterprise installed.

You need to migrate user profiles, local groups membership, and network mapped drives to the new client computers. You download and copy User State Migration Tool (USMT) files to a network share.

Which three actions should you perform next, in sequence? To answer, move the appropriate three actions from the list of actions to the answer area and arrange them in the correct order.

Actions

Run the LoadState tool on the Windows 10 Enterprise computers.

Run the System Preparation (Sysprep) tool on the Windows 7 and Windows 8 computers.

Run the System Preparation (Sysprep) tool on the Windows 10 Enterprise computers.

Modify the custom.ini file.

Run the ScanState tool on the Windows 7 and Windows 8 computers.

Modify the custom.xml file.

Answer Area



Answer:

Explanation:

Actions

Run the LoadState tool on the Windows 10 Enterprise computers.

Run the System Preparation (Sysprep) tool on the Windows 7 and Windows 8 computers.

Run the System Preparation (Sysprep) tool on the Windows 10 Enterprise computers.

Modify the custom.ini file.

Run the ScanState tool on the Windows 7 and Windows 8 computers.

Modify the custom.xml file.

Answer Area

Modify the custom.xml file.

Run the ScanState tool on the Windows 7 and Windows 8 computers.

Run the LoadState tool on the Windows 10 Enterprise computers.



NEW QUESTION 240

Your network contains an Active Directory domain named contoso.com. All client computers run Windows 10 Enterprise and Microsoft Office 2013. All of the computers are joined to the domain.

Your company purchases a subscription to Office 365. An administrator creates an Office 365 account for each user and deploys a federated solution for Office 365.

You need to prevent the users from being prompted for a user account and a password each time they access services from Office 365.

Which account should you instruct the users to use when they sign in to their computer?

- A. a Microsoft account
- B. a local user account
- C. an Office 365 account
- D. a contoso.com account

Answer: D

NEW QUESTION 241

You have a computer named Client1. Client 1 is joined to an Active Directory domain.

You need to join Client1 to an Azure Active Directory (Azure AD) tenant. What should you do first?

- A. From User Accounts in Control Panel, configure the Manage User Accounts settings.
- B. From Computer Management, modify the membership for the Network Configuration Operators group.
- C. From the System in the Settings app, click Disconnect from organization.
- D. From the Local Group Policy Editor, modify the Add workstations to domain policy.

Answer: C

NEW QUESTION 245

You administer Windows 10 Enterprise. Your network includes an Active Directory domain and a standalone server in a perimeter network that runs Windows Server 2008 R2.

Your company purchases five new tablets that run Windows 8. The tablets will be used to access domain resources and shared folders located on the standalone server.

You need to implement single sign-on (SSO) authentication for tablet users. You also need to ensure that you can audit personnel access to the shared folder.

Which two actions should you perform? Each correct answer presents part of the solution.

NOTE: Each correct selection is worth one point.

- A. Create a new Microsoft account for each user.
- B. Ensure that the local account for each user on the stand-alone server uses the same password as the corresponding Microsoft account.
- C. Join the tablets to a domain.
- D. Join the tablets to the same workgroup as the stand-alone server.
- E. Enable a guest account on the stand-alone server.
- F. On the stand-alone server, create user accounts that have the same logon names and passwords as the user domain accounts.

Answer: CF

NEW QUESTION 247

You support Windows 10 Enterprise computers. Your company protects all laptops by using the BitLocker Network Unlock feature. Some employees work from home. You need to ensure that employees can log on to their laptops when they work from home. What should you do?

- A. Have users run the Manage-bde.exe –unlock command before they disconnect from the company network.
- B. Ensure that the Trusted Platform Module (TPM) chips in the laptops are version 1.2 or greater.
- C. Enable BitLocker to Go.
- D. Provide employees with their BitLocker PINs.

Answer: D

NEW QUESTION 248

You administer Windows 10 Enterprise tablets that are members of an Active Directory domain. You want to create an archived copy of My Documents folders that are stored on the tablets. You create a standard domain user account to run a backup task. You need to grant the backup task user account access to the folders. What should you do?

- A. Add the backup task account to the Remote Management Users group on a domain controller.
- B. Add the backup task account to the Backup Operators group on every tablet.
- C. Add the backup task account to the Backup Operators group on a domain controller.
- D. Set the backup task account as NTFS owner on all the folders.

Answer: B

NEW QUESTION 253

DRAG DROP

You support Windows 10 Enterprise client computers. Company policy requires that Microsoft Outlook 2010 be the only mail client allowed and supported. You collect software metering data and discover that several users are running other third-party mail clients. You need to block the third-party mail client from running on the computers. All other applications should be allowed. Which three actions should you perform in sequence? To answer, move the appropriate actions from the list of actions to the answer area and arrange them in the correct order.

Actions

Open **Computer Configuration of Group Policy**.

Select **Software Restriction Policies** and set the default to **Disallowed**.

Create new AppLocker Deny Script rules.

Open **User Configuration of Group Policy**.

Enable enforcement of executable rules.

Create new AppLocker Deny Executable rules.

Enable Audit enforcement of Script rules.

Answer Area



Answer:

Explanation:

Actions

Open **Computer Configuration of Group Policy**.

Select **Software Restriction Policies** and set the default to **Disallowed**.

Create new AppLocker Deny Script rules.

Open **User Configuration of Group Policy**.

Enable enforcement of executable rules.

Create new AppLocker Deny Executable rules.

Enable Audit enforcement of Script rules.

Answer Area

Open **Computer Configuration of Group Policy**.

Create new AppLocker Deny Executable rules.

Enable enforcement of executable rules.



NEW QUESTION 254

You have a computer that runs Windows 10 and has BitLocker Drive Encryption (BitLocker) configured. You need to change the BitLocker PIN for the drive. What should you run?

- A. the repair-bde.exe Windows script file
- B. the Enable-BitLocker cmdlet
- C. the bitsadmin.exe command
- D. the manage-bde.exe command

Answer: D

Explanation: [https://technet.microsoft.com/en-us/library/dd875513\(v=ws.10\).aspx#BKMK_changepin](https://technet.microsoft.com/en-us/library/dd875513(v=ws.10).aspx#BKMK_changepin)

NEW QUESTION 255

Your company network includes a main office and multiple small branch offices. All of the computers in the branch offices run Windows 10 Enterprise and are members of an Active Directory domain. The company has no plans to deploy any servers in the branch offices. Users from some branch offices report that it takes a long time to open documents from a file server that is located in the main office. You need to enable BranchCache on all computers located in the branch offices. What should you do?

- A. Open Group Policy Editor and enable BranchCache in Distributed Cache mode for the computers in the branch offices.
- B. Open PowerShell and run the Enable-BCHostedClients cmdlet on the computers in the branch offices.
- C. Open Group Policy Editor and Enable BranchCache in a Hosted Cache mode for the computers in the branch offices.
- D. Open PowerShell, run the Set-BCCache cmdlet on computers in the branch offices.

Answer: A

Explanation: <http://www.computerstepbystep.com/set-branchcache-distributed-cache-mode.html> [https://technet.microsoft.com/en-us/library/hh831696\(v=ws.11\).aspx](https://technet.microsoft.com/en-us/library/hh831696(v=ws.11).aspx)

NEW QUESTION 259

You manage desktop computers on your company network. The finance department uses computers that run Windows 7 Enterprise and a 32-bit legacy application. The application has some compatibility issues with Windows 10 Enterprise. The application uses domain single sign-on for authentication. The vendor releases a new version of the application that is fully compatible with Windows 10 Enterprise. These versions cannot be installed on the same computer due to HKEY_CURRENT_USER registry setting conflicts.

You need to migrate the finance department computers to Windows 10 Enterprise while meeting the following requirements:

- ?Users are able to use the original version of the application while validating the new version.
- ?Once the new version is validated, the old version is removed with minimal effort.
- ?Users authenticate only once to use the application. Which technology should you choose?

- A. Microsoft Application Compatibility Toolkit (ACT)

- B. Hyper-V
- C. Microsoft Application Virtualization (App-V)
- D. User Experience Virtualization (UE-V)

Answer: A

Explanation: [https://technet.microsoft.com/en-us/library/ee449434\(v=ws.10\).aspx](https://technet.microsoft.com/en-us/library/ee449434(v=ws.10).aspx)

NEW QUESTION 263

Note: This question is part of a series of questions that use the same or similar answer choices. An answer choice may be correct for more than one question in the series. Each question is independent of the other questions in this series. Information and details in a question apply only to that question.

You need to change the password used for an L2TP VPN connection. Which Control Panel application should you use?

- A. Work Folders
- B. Phone and Modem
- C. Credential Manager
- D. Sync Center
- E. System
- F. Network and Sharing Center
- G. RemoteApp and Desktop Connections
- H. Power Options

Answer: F

Explanation: https://www.watchguard.com/help/docs/wsm/xtm_11/en-us/content/en-us/mvpn/l2tp/l2tp_vpn_client_win7_c.html

NEW QUESTION 268

A company has an Active Directory Domain Services (AD DS) domain. All client computers run Windows 10 Enterprise and are joined to the domain. Corporate policy prohibits homegroups on the corporate network.

You need to ensure that client computer network adapter settings do not support joining a homegroup.

What should you do?

- A. Disable IPv6.
- B. Disable IPv4.
- C. Enable IPv6.
- D. Enable IPv4.

Answer: A

Explanation: <https://h30434.www3.hp.com/t5/Notebook-Wireless-and-Networking/Windows-10-can-t-set-up-a-homegroup-on-this-computer/td-p/5581558>

NEW QUESTION 270

You have a computer named Computer1 that runs Windows 10 Enterprise. You add a 1 TB hard drive and create a new volume that has the drive letter D. You format the drive by using NTFS.

You need to limit the amount of space that each user can consume on D: to 200 GB. Members of the Administrators group should have no limit.

Which three actions should you perform? Each correct answer presents part of the solution.

NOTE: Each correct selection is worth one point.

- A. Set a default quota limit.
- B. Run convert D: /FS:NTFS.
- C. Run fsutil quota violations D:.
- D. Enable the Deny disk space to users exceeding quota limit setting.
- E. Add a quota entry.

Answer: ACD

Explanation: <https://msdn.microsoft.com/en-us/library/dd163561.aspx> [https://technet.microsoft.com/en-us/library/cc788136\(v=ws.11\).aspx](https://technet.microsoft.com/en-us/library/cc788136(v=ws.11).aspx)

NEW QUESTION 271

DRAG DROP

You support Windows 10 Enterprise computers. AppLocker policies are deployed. Company policy states that AppLocker must be disabled.

You need to disable AppLocker.

Which three actions should you perform in sequence? (To answer, move the appropriate actions from the list of actions to the answer area and arrange them in the correct order.)

Actions	Answer Area
Delete all Software Restriction Policy rules.	
Run the gpupdate /force command.	
Run the gpresult /v command.	
Disable the Application Identity service.	
Delete all AppLocker rules.	
Disable the Application Information service.	

Answer:**Explanation:** Box 1: Delete all AppLocker rules.

Box 2: Disable the Application Identity service.

Box 3: Run the gpupdate /force command. Note:

* Before you can enforce AppLocker policies, you must start the Application Identity service by using the Services snap-in console.

* The Application Identity service determines and verifies the identity of an application. Stopping this service will prevent AppLocker policies from being enforced.

The gpresult command is used to display the Resultant Set of Policy (RSOP) information for a remote user and computer. And used in conjunction with the /v parameter – it displays verbose policy information. This includes detailed settings that were applied with a precedence of 1.

References:

<http://technet.microsoft.com/en-us/library/hh852337.aspx> <http://technet.microsoft.com/en-us/library/cc733160.aspx>**NEW QUESTION 272**

You support Windows 10 Enterprise tablets. The tablets have the Application Virtualization (App-V) client installed.

Company policy requires that all published App-V applications be available to users only when they are connected to the company network.

You need to configure the tablets so that the company policy requirements are enforced.

What should you do?

- A. Configure mandatory profiles for tablet users.
- B. Reset the App-V client FileSystem cache on the tablets.
- C. Disable the Disconnected operation mode on the tablets.
- D. Change user permissions to the App-V applications.

Answer: C**NEW QUESTION 277**

Your company has Windows 10 Enterprise client computers.

Microsoft Application Virtualization (App-V) is used to deploy applications. An App-V package named App1 is stored in C:\App1 on each computer. You need to publish App1 on the computers.

Which two Windows PowerShell commands should you run? Each correct answer presents part of the solution.

NOTE: Each correct selection is worth one point.

- A. Publish-AppVClientPackage –Name App1 –DynamicUserConfigurationPath C:\App1\config.xml
- B. Add-AppVClientPackage C:\App1\config.xml
- C. Add-AppVClientPackage C:\App1\App1.appv
- D. Publish-AppVClientPackage –Name App1 –DynamicUserConfigurationPath C:\App1\App1.appv

Answer: AC**Explanation:** References:<https://docs.microsoft.com/en-us/microsoft-desktop-optimization-pack/appv-v5/how-to-apply-the-userconfiguration-file-by-using-powershell>**NEW QUESTION 282**

You have five computers that run Windows 10. You are the only user who uses the computers. All of the computers are members of the same domain.

You need to ensure that you can access any file on any of the computers over the Internet.

What should you configure?

- A. account policies
- B. share permissions
- C. application control policies
- D. NTFS permissions
- E. HomeGroup settings
- F. software restriction policies

- G. Encrypting File System (EFS) settings
- H. Microsoft OneDrive

Answer: H

NEW QUESTION 287

You support Windows 10 Enterprise tablets that are part of a workgroup.

You have been given a tablet on which Windows Mobility Center will not start. You need to make it possible to start Windows Mobility Center on the tablet. What should you do?

- A. Run gpedit.msc and set Turn off Windows Mobility Center to Not Configured.
- B. Repair the installation of Windows Mobility Center by using Programs and Features.
- C. Turn on XPS Services by using Turn Windows features on or off in Programs and Features.
- D. Run control.exe, and then select Programs and Feature
- E. Click Turn Windows features on or off.

Answer: A

NEW QUESTION 288

Your company has a main office and a branch office. Each office contains several servers that run Windows Server 2012.

You need to configure BranchCache for the client computers in the branch office.

The solution must ensure that

all of the cached content is in a central location. What should you run on each client computer?

- A. the Enable-BCDistributed cmdlet
- B. the Enable-BCHostedClient cmdlet
- C. the Enable-BCLocal cmdlet
- D. the Enable-BCHostedServer cmdlet

Answer: D

NEW QUESTION 293

You administer a Windows 10 Enterprise computer.

The computer is configured to encrypt several folders by using a self-signed Encrypted File System (EFS) certificate.

You need to make a backup copy of the encryption keys. What should you do?

- A. Open the Certificates console and connect to the user account certificate
- B. Export the self-signed EFS certificate from the Trusted People folder to a Canonical Encoding Rules (CER) file.
- C. Open the Certificates console and connect to the user account certificate
- D. Find the personal self-signed EFS certificate and export it to a Personal Information Exchange (PFX) file.
- E. Open the Certificates console and connect to the user account certificate
- F. Export the personal self-signed EFS certificate from the Trusted Root Certification Authority folder to a Personal Information Exchange (PFX) file.
- G. Open the Certificates console and connect to the computer account certificate
- H. Export the self-signed EFS certificate from the Trusted People folder to a Canonical Encoding Rules(CER) file.

Answer: B

NEW QUESTION 298

You administer Windows 10 Enterprise computers. You have secured the computers by using BitLocker.

You have distributed a new application to the computers. Users report that file associations for ZIP archives is broken and users are unable to open ZIP files.

You need to design a solution that recovers file association. You also need to ensure that BitLocker encryption settings are maintained. What should you do?

- A. Restore computer from the latest restore point.
- B. Modify setting in Change default settings for media or devices.
- C. Delete the HKEY CLASSES_ROOT\exefile\shell\open\command registry key.
- D. Select Reset your PC.

Answer: A

NEW QUESTION 303

You have a computer that runs Windows 10.

You need to ensure that the next time the computer restarts, the computer starts in safe mode.

What should you use?

- A. the Restore-Computer cmdlet
- B. the Bcdedit command
- C. the Restart-Computer cmdlet
- D. the Bootcfg command

Answer: B

NEW QUESTION 304

Your network contains an Active Directory domain. All client computers run Windows 10 Enterprise.

Your company uses virtual smart cards.

A user named User1 requires a virtual smart card on a new client computer named Computer1.

Which two actions should you perform? Each correct answer presents part of the solution.

NOTE: Each correct selection is worth one point.

- A. Run the tpmvscmgr.exe command.
- B. Enroll Computer1 for a certificate.
- C. Run the Enable-BitLocker cmdlet.
- D. Enroll User1 for a certificate.

Answer: AD

NEW QUESTION 306

Your network contains an Active Directory domain. The domain contains 100 computers that run Windows 10. You plan to develop a line-of-business application and to deploy the application by using Windows Store for Business.

You need to ensure that users can see the private store of your company when they sign in to the Windows Store for Business.

What should you do first?

- A. Provision a Windows Dev Center dev account for each user.
- B. Provision a Microsoft Azure Active Directory (Azure AD) account for each user.
- C. Assign the Windows Store Purchaser role to each user.
- D. Assign the Windows Store Admin role to each user.
- E. Provision a Microsoft account for each user.

Answer: B

NEW QUESTION 309

You are a systems administrator for your company. The company has employees who work remotely by using a virtual private network (VPN) connection from their computers, which run Windows 10 Enterprise.

These employees use an application to access the company intranet database servers. The company recently decided to distribute the latest version of the application through using a public cloud.

Some users report that every time they try to download the application by using Internet Explorer, they receive a warning message that indicates the application could harm their computer.

You need to recommend a solution that prevents this warning message from appearing, without compromising the security protection of the computers. What should you do?

- A. Publish the application through a public file transfer protocol (FTP) site.
- B. Publish the application through an intranet web site.
- C. Instruct employees to disable the SmartScreen Filter from within the Internet Explorer settings.
- D. Digitally sign the application by using a trusted certificate, and then update the default App PackageDeployment policy on all computers.

Answer: D

NEW QUESTION 314

You support Windows 10 Enterprise desktop computers and tablets that are members of an Active Directory domain. The domain includes Active Directory Certificate Services. All users use virtual smart cards to log on to their computers.

A domain user wants to log on to both his desktop computer and his tablet computer by using the same domain user account.

You need to configure the desktop and tablet computers to support two-factor authentication for the same domain user account. What should you do?

- A. Enroll the user for two separate certificates based on the Smartcard Logon templat
- B. Install one certificate in a virtual smart card on each of the user's computers/
- C. After the user has logged on to one computer, disable the Trusted Platform Module (TPM) on the secondcompute
- D. Run the tpmvscmgr.exe utility on each of the computers.
- E. Issue a temporary physical smart car
- F. Use this smart card for an initial logon on each computer, then disconnect the tablet from the office network and destroy the temporary smart card.
- G. Export the private key from the desktop compute
- H. Import the private key to the tablet.

Answer: A

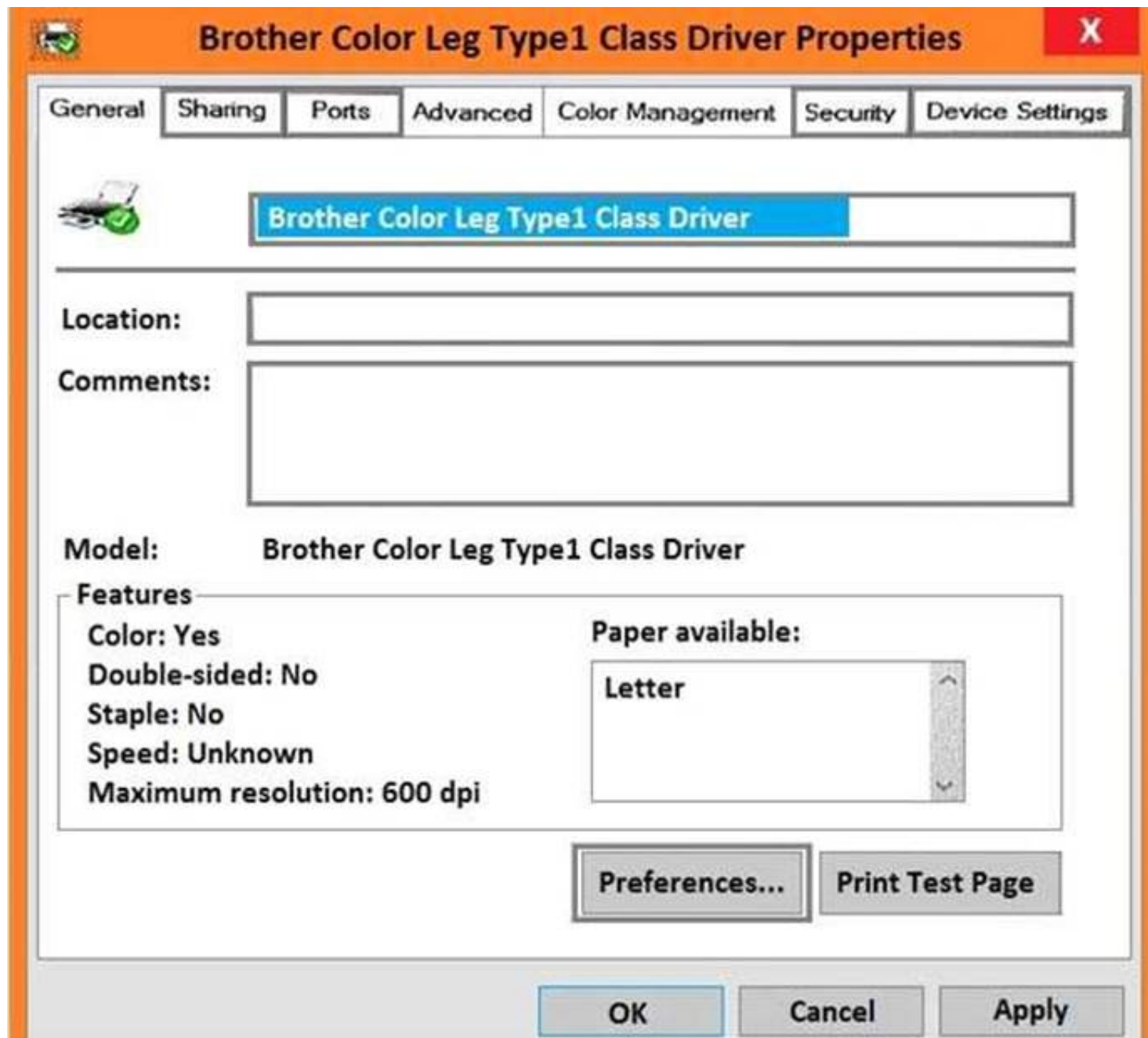
NEW QUESTION 315

HOTSPOT

You are a consultant at a small company. The company's employees use Windows 10 Enterprise computers.

An employee wants to share his printer with only selected users. You need to enable the correct settings.

Which two tab settings should you modify? To answer, select the appropriate tab settings in the answer area.



Answer:

Explanation:



NEW QUESTION 316

DRAG DROP

You have a computer that runs Windows 10 Enterprise that contains the following folders. Each folder has its own access list and does not inherit permissions from the parent folder.

- ▼ Folder1
 - Folder2
 - Folder3
- ▼ Folder4
 - Folder5

You have a local user named User1. User1 has read and execute permission to Folder1.

You need to ensure that User1 can perform the following tasks:

- Set the permissions on files in Folder2.
- Create new files in Folder5.
- Edit all files in Folder3.

The solution must use the principle of least privilege.

Which permissions should you assign to User1 on each folder? To answer, drag the appropriate permissions to the correct folders. Each permission may be used once, more than once, or not at all. You may need to drag the split bar between panes or scroll to view content.

NOTE: Each correct selection is worth one point.

● ● ● ● ●

Permissions

Full Control

List Folder Contents

Modify

Read

Read & Execute

Write

Answer Area

Folder2:

Permission

Folder3:

Permission

Folder5:

Permission

Answer:

Explanation:

Folder2:

Full Control

Folder3:

Modify

Folder5:

Write

NEW QUESTION 318

You have a Windows 10 Enterprise computer that is connected to an Active Directory Domain Services (AD DS) domain. You create a folder and share the folder with everyone in your organization.

You need to modify the NTFS permissions of the folder to meet the following criteria:

?Users from the Supervisors AD security group must be able to open files, but not modify them.

?Users from the Marketing AD security group must be able to create, modify, and delete files.

?Users from both groups must not be able to delete the folder. Which permissions should you set?

- A. Assign the Supervisors group the Read and Write permission
- B. Assign the Marketing group the Modifypermission and the Delete Subfolders and Files special permission.
- C. Assign the Supervisors group the Read and Write permission
- D. Assign the Marketing group the Full Control permission.
- E. Assign the Supervisors group the Read permissio
- F. Assign the Marketing group the Read and Writepermissions and the Delete special permission.
- G. Assign the Supervisors group the Read permissio
- H. Assign the Marketing group the Read and Writepermissions and the Delete Subfolders and Files special permission.

Answer: D

NEW QUESTION 322

.....

Thank You for Trying Our Product

* 100% Pass or Money Back

All our products come with a 90-day Money Back Guarantee.

* One year free update

You can enjoy free update one year. 24x7 online support.

* Trusted by Millions

We currently serve more than 30,000,000 customers.

* Shop Securely

All transactions are protected by VeriSign!

100% Pass Your 70-697 Exam with Our Prep Materials Via below:

<https://www.certleader.com/70-697-dumps.html>