



Microsoft

Exam Questions 70-698

Installing and Configuring Windows 10

NEW QUESTION 1

You have a computer named Computer1 that runs Windows 10. Computer1 is infected by a virus.
You fail to access the Settings app on Computer1 due to the virus.
You need to restart the computer and ensure that Computer1 displays the advanced startup options when the computer restarts.
What are two possible ways to achieve the goal? Each correct answer presents a complete solution.

- A. From Windows PowerShell, runRestart-Computer Computer1 - Wait - For PowerShell.
- B. From System Configuration select safe boot select minimal, and then click Restart from the Start menu.
- C. From system Configuration, select selective startup, and then click Restart from the start menu.
- D. From a command prompt, run shutdown.exe /r/o.
- E. From Power on the start menu, hold the SHIFT key while you click Restart.

Answer: DE

Explanation: <https://support.microsoft.com/en-us/answers/f40a95aa-1e34-4907-98ba-a308fd10a786/get-to-safe-mode-a>
<http://www.howtogeek.com/126016/three-ways-to-access-the-windows-8-boot-options-menu/>

NEW QUESTION 2

You are the system administrator for a company. All devices run Windows 10 Pro.
An executive asked id voice commands could be used with their computer to access weather reports and set reminders.
You need to enable voice commands for the executive's computer.
Which three actions should you perform in sequence? To answer, move the appropriate actions from the list of actions to the answer area and arrange them in the correct order.

Actions	Answer Area
Type Cortana&search settings and press Enter.	
Enable Narrator.	
Press the Windows key and the D key at the same time.	
Press the Windows key and the B key at the same time.	
Press the Windows key and the S key at the same time.	
Enable Hey Cortana.	
Type Narrator settings and press Enter.	

Answer:

Explanation:

Actions	Answer Area
Type Cortana&search settings and press Enter.	Press the Windows key and the S key at the same time.
Enable Narrator.	Type Cortana&search settings and press Enter.
Press the Windows key and the D key at the same time.	Enable Hey Cortana.
Press the Windows key and the B key at the same time.	
Press the Windows key and the S key at the same time.	
Enable Hey Cortana.	
Type Narrator settings and press Enter.	

NEW QUESTION 3

company has client devices that run Windows 7 Professional with Service Pack 1 or Windows 8 Pro. The company plans to use Windows telemetry and Upgrade Readiness to upgrade all devices to Windows 10 Pro.

You need to ensure that you can collect the Upgrade Readiness inventory and telemetry data. What should you do first?

- A. Enable data sharing on the client computers.
- B. Enable connection settings on the client computers.
- C. Enroll in the Microsoft Operations Management Suite.
- D. Change the Windows 8 Pro computers to Windows 8 Enterprise.

Answer: C

Explanation: Upgrade Readiness is offered as a solution in Microsoft Operations Management Suite (OMS) and Azure Log Analytics, a collection of cloud based services for managing on premises and cloud computing environments.

References: <https://docs.microsoft.com/en-us/windows/deployment/upgrade/upgrade-readiness-requirements>

NEW QUESTION 4

You have four computers configured as shown in the following table:

Computer name	Trusted Platform Module (TPM) version	Wi-Fi Direct support	Second Level Address Translation (SLAT)-capable processor support	Camera type
Computer1	None	No	Yes	Webcam and illuminated infrared camera
Computer2	1.2	Yes	Yes	illuminated infrared camera
Computer3	2.0	No	Yes	Webcam
Computer4	2.0	Yes	No	Webcam

You need to deploy Windows 10 Enterprise. The deployment must support Miracast, BitLocker Drive Encryption (BitLocker), and Windows Hello with facial recognition.

On which computer should you install Windows 10?

- A. Computer1
- B. Computer2
- C. Computer3
- D. Computer4

Answer: B

Explanation: <https://www.microsoft.com/en-za/windows/windows-10-specifications#sysreqs>

NEW QUESTION 5

You are the administrator for a company. All devices run Windows 10 Pro. File and printer sharing is turned on.

Users report that files in the Public folder are being modified and changed by other users on the network. You need to ensure that only specific users and groups can access files in the Public folder share.

What should you do?

- A. Turn off Public folder sharing.
- B. Turn off file and printer sharing.
- C. Turn on Public folder sharing.
- D. Deny the Everyone Group Full Control to the Public folder share.

Answer: B

Explanation: References: <https://technet.microsoft.com/en-us/library/dd277411.aspx>

NEW QUESTION 6

You are the administrator for a company. All devices run Windows 10 Enterprise and are joined to an Active Directory Domain Services domain.

Administrators are unable to test network connectivity to Windows 10 devices because ping is being blocked. You need to be able to ping the devices.

Solution: Turn on File and Printer Sharing in the Advanced Sharing settings. Does the solution meet the goal?

- A. Yes
- B. No

Answer: B

NEW QUESTION 7

A company has client computers that run Windows 10. The client computer systems frequently use IPSec tunnels to securely transmit data.

You need to configure the IPSec tunnels to use 256-bit encryption keys. Which encryption type should you use?

- A. 3DES
- B. DES
- C. RSA
- D. AES

Answer: D

Explanation: https://en.wikipedia.org/wiki/Advanced_Encryption_Standard

NEW QUESTION 8

Note: This question is part of a series of questions that use the same scenario. For your convenience, the scenario is repeated in each question. Each question presents a different goal and answer choices, but the text of the scenario is exactly the same in each question in this series.

Start of repeated scenario

Your network contains a single Active Directory domain named contoso.com. All computers are members of the domain and run the 64-bit version of Windows 10 Enterprise.

On a test computer named Computer_Test1, you pin several company-specific applications in a group named Contoso Apps, and then you export the start menu layout to a file named contoso.xml.

You install Client Hyper-V on a computer named Computer6. You identify the following requirements.

- Install the Hyper V feature on a computer named Computer1.
- Use virtual smart card authentication on a computer named Computer2.
- Enable Secure Boot on a computer named Computer3.
- Connect a computer named Computer4 to a projector by using Miracast.
- Ensure that a user named User 1 can use keyboard shortcuts by pressing one key at a time.
- Ensure that you can share the clipboard between Computer6 and the virtual machines running on Computer6.
- Add the Contoso Apps group to the Start menu of a computer named Computer7.

End of repeated scenario.

You install all of the Contoso apps on Computer7. You need to meet the requirements of Computer7. What should you do?

- A. Run the Import-StartLayout cmdlet.
- B. Copy Contoso.xml to the C:\Users\Default\Start menu folder.
- C. Configure the Start Menu and Taskbar settings in a Group Policy.
- D. Copy Contos
- E. xml to the C:\ProgramData\Microsoft\Windows\Start Menu folder.

Answer: A

Explanation: <https://blogs.technet.microsoft.com/deploymentguys/2016/03/07/windows-10-start-layout-customization/#Expor>

NEW QUESTION 9

company manages Windows 8.1 Pro and Windows 10 Pro client devices by using Group Policy objects (GPOs). The company plans to migrate from GPOs to mobile device management (MDM) policies.

You need to create an HTML report of the GPO settings that are cross-referenced with supported MDM policies.

Solution: You use the MDM Migration Analysis Tool. Does the solution meet the goal?

- A. Yes
 B. No

Answer: A

Explanation: References:

<https://blogs.technet.microsoft.com/cbernier/2018/04/02/windows-10-group-policy-vs-intune-mdm-policy-who->

NEW QUESTION 10

Note: This question is part of a series of questions that present the same scenario. Each question in the series contains a unique solution that might meet the stated goals. Some question sets might have more than once correct solution, while others might not have a correct solution.

A company has a client device that runs Windows 10 Pro. The device has a folder named Folder1. The folder is configured using the following settings:

Permission type	Group	Action
Share	Administrators	Full Control
Share	Users	Read
Share	Everyone	Modify
NTFS	Administrators	Full Control
NTFS	Users	Modify

A user reports that they cannot change documents when accessing them over the network. You need to ensure that the users can change documents in the folder.

Solution: You set the Users group share permission to Modify.

Does the solution meet the goal?

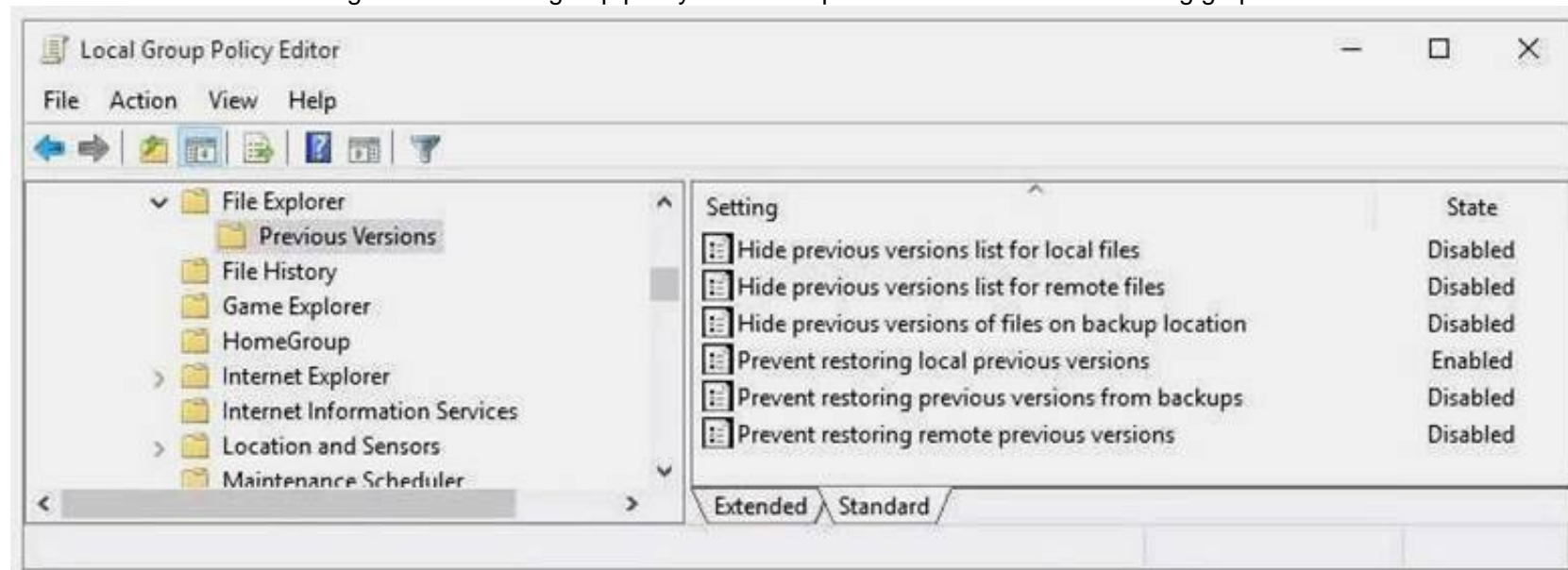
- A. Yes
 B. No

Answer: B

NEW QUESTION 10

You have a standalone computer that runs Windows 10 Enterprise. The computer is configured to automatically back up files by using File History. The user of the computer uses the OneDrive desktop app to sync files.

The Previous Versions settings from the local group policy of the computer are shown in the following graphic.



Use the drop-down menus to select the answer choice that completes each statement based on the information presented in the graphic.

NOTE: Each correct selection is worth one point.

Answer Area

If a user deletes a file from OneDrive by using File Explorer, the file [answer choice].

If a user deletes a file from a local drive by using File Explorer, the file [answer choice].

• • • • •

Answer Area

If a user deletes a file from OneDrive by using File Explorer, the file [answer choice].

If a user deletes a file from a local drive by using File Explorer, the file [answer choice].

Answer:

Explanation: When a file is deleted from the local OneDrive folder with File Explorer, the deletion is replicated to Onedrive.com and the file is moved to the OneDrive recycle bin. The deleted file can therefore be recovered from the Recycle Bin on Onedrive.com.
 If a user deletes a file from a local drive by using File Explorer, the file cannot be restored. If the file is not in the OneDrive folder, it will not be a file that is synced to onedrive.com. We could use Previous Versions to restore the file but this is prevented by the Group Policy settings. The "Prevent restoring local previous versions" – Enabled group policy setting would prevent the previous version from being restored.
 References:
<http://www.groovypost.com/howto/restore-deleted-files-local-onedrive-folder/>

NEW QUESTION 15

Note: This question is part of a series of questions that use the same set of answer choices. Each answer choice may be used once, more than once, or not at all. You have a computer named Computer1 that has storage configured as shown in the following table:

Disk name	Size	Storage pool name
Disk1	200 GB	Pool1
Disk2	100 GB	Pool1
Disk3	500 GB	Pool1
Disk4	500 GB	Pool2
Disk5	500 GB	Pool2
Disk6	800 GB	None
Disk7	100 GB	Pool3
Disk8	100 GB	Pool3

Pool1 contains a storage space named Space1 that is 300 GB. Pool3 contains a storage space named Space2 that is 100 GB. Pool2 is empty. You need to add a storage space to Pool2. What should you use?

- A. Add-PhysicalDisk
- B. Diskpart
- C. New-VirtualDisk
- D. Remove-PhysicalDisk
- E. Resize-VirtualDisk
- F. Set-StoragePool
- G. Subst
- H. Update-Disk

Answer: A

Explanation: [https://technet.microsoft.com/en-us/library/hh848702\(v=wps.630\).aspx](https://technet.microsoft.com/en-us/library/hh848702(v=wps.630).aspx)

NEW QUESTION 16

Note: This question is part of a series of questions that use the same scenario. For your convenience, the scenario is repeated in each question. Each question presents a different goal and answer choices, but the text of the scenario is exactly the same in each question in this series.

Start of repeated scenario

Your network contains a single Active Directory domain named adatum.com. The network contains five servers configured as shown in the following table:

Server name	Domain/workgroup	Role
DC1	Adatum.com	Domain controller
DC2	Adatum.com	Domain controller
Server1	Adatum.com	Member server
Server2	Adatum.com	Member server
Test Server	Workgroup	File server

All of the servers run Windows Server 2012 R2.

Test_Server has a shared folder named ShareA. Only local users have permissions to ShareA. The network contains a mainframe computer that is administered by using the Telnet protocol. The domain contains four client computers configured as shown in the following table:

Computer name	Primary user
Computer1	User1
Computer2	User2
Computer3	User3
Computer4	User4

All of the client computers run the 64-bit version of Windows. User3 frequently accesses ShareA. Remote Desktop is enabled on Computer4. Your company identifies the following requirements.

- Ensure that you can test unsigned device drivers on Computer1
- Enable Credential Guard on Computer2.
- Run commands and cmdlets remotely on computer2.
- Configure User Account control (UAC) on Computer3 to prompt administrators for credentials when elevated privileges are required.

- Ensure that User1 can view and interact with a desktop session of User3.
- Ensure that User2 can use Telnet to manage the mainframe.
- Ensure that User4 can use Remote Desktop to access Computer4 remotely.

End of repeated scenario.

On Test_Server, you reset the password for User3. You need to ensure that User3 can access ShareA.

Which tool should you instruct User3 to use on Computer3?

- A. the Get-Credential cmdlet
- B. Credential Manager
- C. Authorization Manager
- D. Active Directory Users and Computers

Answer: B

Explanation: <http://www.digitalcitizen.life/credential-manager-where-windows-stores-passwords-other-login-details>

NEW QUESTION 21

You have a computer named Computer1 that runs Windows 10 Enterprise. You plan to install the most recent updates to Computer1.

You need to ensure that you can revert to the current state of Computer1 in the event that the computer becomes unresponsive after the update.

What should you include in your solution?

- A. The Reset this PC option from the Recovery section of the Settings app
- B. The Sync your settings options from the Accounts section of the Settings app
- C. The Backup and Restore (Windows 7) control panel item
- D. The Refresh your PC option from the PC Settings

Answer: C

Explanation: The question states that you need to ensure that you can revert to the current state of Computer1. The question does not specify what exactly the current state is in terms of software configuration but it would be safe to assume that Computer1 has Windows Store Apps installed, desktop applications installed and some previous Windows Updates installed.

The only way to recover the computer to its 'current' state is to perform a full backup of the computer before updating it. Then if the computer becomes unresponsive after the update, we can simply restore the backup to return the computer to its state at the time of the backup.

NEW QUESTION 24

You have a custom Microsoft Management Console (MMC) named Console 1 that contains several snapins. Users use Console1 to manage specific computer settings. Users report that every time they close Console1, they are prompted to save the MMC.

You need to prevent the prompts to save Console1. What should you do?

- A. From the Details settings of the MMC file, modify the Authors property.
- B. From the File menu, click Add/Remove Snap-i
- C. and then click Edit Extensions.
- D. From the File menu, click Options and then modify the console mode.
- E. Horn the Security settings of the MMC file, modify the permissions.

Answer: C

Explanation: <http://www.tech-recipes.com/rx/9467/how-to-create-custom-microsoft-management-consoles-mmcs-for-managi>

NEW QUESTION 29

Note: This question is part of a series of questions that use the same set of answer choices. Each answer choice may be used once, more than once, or not at all.

Your network contains a single Active Directory domain. The domain contains computers that run Windows 10 Enterprise.

The computers are configured as shown in the following table:

Computer name	Primary user	Computer type
PC_User1	User1	Laptop
PC_User2	User2	Laptop
PC_User3	User3	Tablet

When User1 works remotely, the user fails to access shared folders on the corporate network.

When User 2 and User3 work remotely, they successfully connect to the shared folders on the corporate network.

You need to ensure that User1 can connect to the shared folders without user interaction. What should you do?

- A. Click Turn on password protected sharing.
- B. Disable Network Discovery.
- C. Modify the Profile settings of an incoming firewall rule.
- D. Run the Add-VpnConnectionTriggerApplication cmdlet.
- E. Run the New-NetFirewallRule cmdlet and specify the -Direction Outbound parameter.
- F. Run the Ncw-VpnConnection cmdlet.
- G. Run the Set-NetConnectionProfile cmdlet.
- H. Run the Set-VPNConnection cmdlet

Answer: D

Explanation: [https://technet.microsoft.com/en-us/library/dn296460\(v=wnps.630\).aspx](https://technet.microsoft.com/en-us/library/dn296460(v=wnps.630).aspx)

NEW QUESTION 33

Note: This question is part of a series of questions that present the same scenario. Each question in the series contains a unique solution that might meet the stated goals. Some question sets might have more than one correct solution, while others might not have a correct solution.

A company has a client device that runs Windows 10 Pro. The device has a folder named Folder1. The folder is configured using the following settings:

Permission type	Group	Action
Share	Administrators	Full Control
Share	Users	Read
Share	Everyone	Modify
NTFS	Administrators	Full Control
NTFS	Users	Modify

A user reports that they cannot change documents when accessing them over the network. You need to ensure that the users can change documents in the folder. Solution: You set the Users groups share permission to Full Control. Does the solution meet the goal?

- A. Yes
- B. No

Answer: B

NEW QUESTION 36

You have a computer named Computer1 that runs Windows 10. File History is turned on.

You have files located in D:\Photos.

You need to ensure that you can recover previous versions of the files in D:\Photos. What should you do?

- A. Add D:\Photos to the Pictures library.
- B. Turn on System Protection for drive D.
- C. Enable sharing for D:\Photos.
- D. Modify the Recovery settings in the Settings app.

Answer: A

Explanation: <https://support.microsoft.com/en-us/help/17128/windows-8-file-history>

NEW QUESTION 38

You have a computer that runs the 32-bit version of Windows 7 Professional. You need to perform an in-place upgrade to Windows 10.

Which two editions of Windows 10 can you upgrade the computer? Each correct answer presents a complete solution.

- A. the 32-bit version of Windows 10 Pro
- B. the 64-bit version of Windows 10 Pro
- C. the 32-bit version of Windows 10 Enterprise
- D. the 64-bit version of Windows 10 Enterprise
- E. the 32-bit version of Windows 10 Home

Answer: AB

Explanation: <https://www.microsoft.com/en-us/software-download/windows10/>

NEW QUESTION 40

You are the system administrator for a company. All devices run Windows 10 Enterprise. You have an on-premises Active Directory Domain Services (AD DS) domain as well as a Microsoft Azure Active Directory (Azure AD) environment.

Your on-premises Active Directory infrastructure consists of the following:

Windows Server 2012 R2 domain controllers

Windows Server 2012 domain/forest functional level

Windows Server 2012 Certificate Authority

You are planning a hybrid deployment of Windows Hello for Business.

You need to determine which deployment options are available for your environment.

Which two deployment options can you use? Each correct answer presents a complete solution. NOTE: Each correct selection is worth one point.

- A. Key trust Group Policy managed
- B. Key trust Modern managed
- C. Certificate trust Modern managed
- D. Certificate trust Mixed managed

Answer: BC

Explanation: References:

<https://docs.microsoft.com/en-us/windows/security/identity-protection/hello-for-business/hello-hybrid-key-trust-> <https://docs.microsoft.com/en-us/windows/security/identity-protection/hello-for-business/hello-hybrid-cert-trust-> <https://docs.microsoft.com/en-us/windows/security/identity-protection/hello-for-business/hello-planning-guide>

NEW QUESTION 45

A company plans to use Active Directory-based activation for all client devices. The company has the following servers:
 You need to install and configure the Volume Activation Services role. Which server and product key type should you use? To answer, configure the appropriate options in the dialog box in the answer area.
 NOTE: Each correct selection is worth one point.

Installation location

▼
DC1
DC2
Server1
Server2

Product key type to use

▼
Generic Volume License Key
Multiple Activation Key
Key Management Service host key

Answer:

Explanation:

Installation location

▼
DC1
DC2
Server1
Server2

Product key type to use

▼
Generic Volume License Key
Multiple Activation Key
Key Management Service host key

NEW QUESTION 46

In this section, you will see one or more sets of questions with the same scenario and problem. Each question presents a unique solution to the problem, and you must determine whether the solution meets the stated goals. Any of the solutions might solve the problem. It is also possible that none of the solutions solve the problem.
 Once you answer a question in this section, you will NOT be able to return to it. As a result, these questions will not appear in the review screen.
 Note: This question is part of a series of questions that present the same scenario. Each question in the series contains a unique solution. Determine whether the solution meets the stated goals.
 You have a computer named Computer1 that runs Windows 10. File History is turned on.
 The user of Computer1 reports that previous versions of D:\Folder\File1.doc are unavailable from the Previous Versions tab.
 You need to ensure that the previous versions of the file are created. Solution: Add D:\Folder\to the Documents library.
 Does this meet the goal?

- A. Yes
- B. No

Answer: A

Explanation: <https://support.microsoft.com/en-us/help/17128/windows-8-file-history>

NEW QUESTION 49

Note: This question is part of a series of questions that present the same scenario. Each question in the series contains a unique solution. Determine whether the solution meets the stated goals.

While performing maintenance on a computer, you open Indexing Options, and then you click Pause. You complete the computer maintenance.

You need to resume indexing.

Solution: From the Services console, you restart the Storage Service service. Does this meet the goal?

- A. Yes
- B. No

Answer: B

Explanation: <http://www.techbuzz.in/restart-or-resume-windows-indexing-services-after-pausing.php>

NEW QUESTION 52

You have two computers named Computer1 and Computer2 that run Windows 10. On Computer1, you create a provisioning package named Package1.

You plan to apply the provisioning package to Computer2. Which file must be applied to Computer2?

- A. Package1.icdproj.xml
- B. Customizations.xml
- C. Package1.ppkg
- D. Package1.cat

Answer: C

Explanation: <https://msdn.microsoft.com/en-us/windows/hardware/commercialize/manufacture/desktop/dism-provisioning-pa>

NEW QUESTION 53

You need to create a script to verify the activation status on 100 computers. What should you use in the script?

- A. the sfc.exe command and the /scannow parameter
- B. the sfc.exe command and the /verifyonly parameter
- C. the slmgr.vbs script and the /ipk parameter
- D. the slmgr.vbs script and the /dli parameter

Answer: D

Explanation: [https://technet.microsoft.com/en-us/library/dn502540\(v=ws.11\).aspx](https://technet.microsoft.com/en-us/library/dn502540(v=ws.11).aspx)

NEW QUESTION 58

You have a computer that has a local printer. You need to share the printer.

Which two tools can you use to achieve the goal? Each correct answer presents a complete solution.

- A. net share from a command prompt
- B. Devices and Printers from Control Panel
- C. Set-PrintConfiguration from Windows PowerShell
- D. Set-Printer from Windows PowerShell
- E. Printers & scanners from the Settings app

Answer: BD

Explanation: <http://www.addictivetips.com/windows-tips/how-to-share-a-usb-printer-over-your-network-in-windows-10/>
[https://technet.microsoft.com/en-us/library/hh918366\(v=wps.630\).aspx](https://technet.microsoft.com/en-us/library/hh918366(v=wps.630).aspx)

NEW QUESTION 59

You are the desktop administrator for a company. You plan to deploy Windows 10 Pro. You configure a single existing deployment image to use for all devices.

You purchase a newer device hardware model. You deploy the company image to a new device. You observe that there is no network connectivity and the device displays a stop error.

You need to prevent the stop error to continue troubleshooting the issue. Which three actions should you perform in sequence? To answer, move the appropriate actions from the list of actions to the answer area and arrange them in the correct order.

Actions

Answer Area

Find the Network Controller device.

Right-click the device and disable it.

Right-click the device and roll back the device driver.

Open Device Manager

Answer:

Explanation:

Actions

Answer Area

Find the Network Controller device.

Right-click the device and disable it.

Right-click the device and roll back the device driver.

Open Device Manager

Open Device Manager

Find the Network Controller device.

Right-click the device and disable it.

NEW QUESTION 64

You have the following output from Windows PowerShell:

```
Name : Spooler
RequiredServices : {RPCSS, http}
CanPauseAndContinue : False
CanShutdown : False
CanStop : False
DisplayName : Print Spooler
DependentServices : {Fax}
MachineName : .
ServiceName : Spooler
ServicesDependedOn : {RPCSS, http}
ServiceHandle : SafeServiceHandle
Status : Stopped
ServiceType : Win32OwnProcess, InteractiveProcess
StartType : Disabled
Site :
Container :
```

You need to start the service.

What command should you run first? To answer, select the appropriate options in the answer area.

Answer Area

▼

```
Restart-Service
Resume-Service
Set-Service
Start-Service
```

-Name Spooler

▼

```
$True
-CanShutdown $False
-Force
-StartupType Automatic
-Status Start
```

Answer:

Explanation: *Box 1* Restart-Service

Box 2

\$True

Restart-Service -Name Spooler\$True

[https://technet.microsoft.com/en-us/library/hh849823\(v=wps.650\).aspx](https://technet.microsoft.com/en-us/library/hh849823(v=wps.650).aspx)

NEW QUESTION 67

You have a computer named Computer1 that has the Hyper V feature enabled.

You have two virtual machines named VM1 and VM2 hosted on Computer1. VM1 can communicate with VM2 and Computer1. VM1 fails to connect to the Internet. Computer1 can connect to the Internet.

You need to ensure that VM1 can connect to the Internet. What should you do?

- A. On Computer 1, modify the network settings.
- B. Enable port mirroring on VM1.
- C. Create an external virtual switch and configure VM1 to use the switch.
- D. On VM1, select Enable virtual LAN identification.

Answer: C

Explanation: <http://www.technig.com/connect-hyper-v-machines-to-internet/>

NEW QUESTION 68

Note: This question is part of a series of questions that present the same scenario. Each question in the series contains a unique solution that might meet the stated goals. Some question sets might have more than one correct solution, while others might not have a correct solution.

After you answer a question in this scenario, you will NOT be able to return to it. As a result, these questions will not appear in the review screen.

You are the administrator for a company. All devices run Windows 10 Enterprise and are members of the Adatum.com domain. All drives on the devices are formatted with the NTFS file system and have the default permissions assigned. You have a device which is used by multiple users and stores information for a specific project. The project team members are members of a group named ProjectX.

The system is also used by other people that are not members of the ProjectX team. All files for ProjectX are stored in a folder with the path E:\ProjectX.

You have the following requirements:

*Only members of the ProjectX group must have all permissions on the folder and all of the files in it.

*ProjectX members should not be granted any specific rights to any other folders.

You need to meet the requirements.

Solution: You disable inheritance on the E:\ProjectX folder and specify the Copy option. You assign the Full Control permission to the Project X group.

Does the solution meet the goal?

- A. Yes
- B. No

Answer: B

NEW QUESTION 73

Note: This question is part of a series of questions that use the same set of answer choices. Each answer choice may be used once, more than once, or not at all.

You have a computer named Computer1 that has a dual-boot configuration. Computer1 has Windows 8.1 and Windows 10 installed.

You need to configure Computer1 to use only 4 GB of RAM when the computer starts in Windows 10. What should you run?

- A. Add-WindowsImage
- B. bcdboot.exe
- C. bcdedit.exe
- D. bootcfg.exe
- E. bootim.exe
- F. bootsect.exe

G. diskpart.exe
H. Expand-WindowImage

Answer: C

Explanation: [https://technet.microsoft.com/en-us/library/cc709667\(v=ws.10\).aspx](https://technet.microsoft.com/en-us/library/cc709667(v=ws.10).aspx)

NEW QUESTION 75

You are the administrator for a company. All devices run Windows 10 Enterprise. You receive reports about network configuration issues. You run the ipconfig command and receive the following results.

```
Ethernet adapter Ethernet 2:

Connection-specific DNS Suffix  . : home
Description . . . . . : Realtek PCIe GBE Family Controller Flight
Physical Address. . . . . : 6C-62-6D-8C-ED-97
DHCP Enabled. . . . . : Yes
Autoconfiguration Enabled . . . . : Yes
Link-local IPv6 Address . . . . . : fe80::25b2:47c2:d952:5a58%3(Preferred)
IPv4 Address. . . . . : 192.168.1.12(Preferred)
Subnet Mask . . . . . : 255.255.255.0
Lease Obtained. . . . . : Friday, October 20, 2017 4:17:33 PM
Lease Expires . . . . . : Saturday, October 21, 2017 4:17:29 PM
Default Gateway . . . . . : 192.168.1.1
DHCP Server . . . . . : 192.168.1.1
DHCPv6 IAID . . . . . : 74211949
DHCPv6 Client DUID. . . . . : 00-01-00-01-14-C0-E2-88-6C-62-6D-8C-ED-97
DNS Servers . . . . . : 192.168.1.1
```

Use the drop-down menus to select the answer choice that answers each question. NOTE: Each correct selection is worth one point.

Will the client be able to use IPv6 to connect directly to the internet without using a NAT server?

Yes
No

When will the client attempt to renew the IPv4 DHCP address for the first time?

Every hour
12 hours
1 day
7 days

Which IPv4 address with the client receive if the DHCP address expires and it is unable to obtain a new lease?

0.0.0.0
192.168.1.12
192.168.1.1
169.254.x.y

Answer:

Explanation:

Will the client be able to use IPv6 to connect directly to the internet without using a NAT server?

Yes
No

When will the client attempt to renew the IPv4 DHCP address for the first time?

Every hour
12 hours
1 day
7 days

Which IPv4 address with the client receive if the DHCP address expires and it is unable to obtain a new lease?

0.0.0.0
192.168.1.12
192.168.1.1
169.254.x.y

NEW QUESTION 76

Note: This question is part of a series of questions that use the same set of answer choices. Each answer choice may be used once, more than once, or not at all. You have a computer named Computer1 that has storage configured as shown in the following table.

Disk name	Size	Storage pool name
Disk1	200 GB	Pool1
Disk2	100 GB	Pool1
Disk3	500 GB	Pool1
Disk4	500 GB	Pool2
Disk5	500 GB	Pool2
Disk6	800 GB	None
Disk7	100 GB	Pool3
Disk8	100 GB	Pool3

Pool1 contains a storage space named Space1 that is 300 GB. Pool3 contains a storage space named Space2 that is 100 GB. Pool2 is empty. You discover that Disk2 experiences physical errors.

You need to ensure that all of the data in Space1 is stored on other disks in the storage pool only. What should you use?

- A. Add-PhysicalDisk
- B. Diskpart
- C. New-VirtualDisk
- D. Remove-PhysicalDisk
- E. Resize-VirtualDisk
- F. Set-StoragePool
- G. Subst
- H. Update-Disk

Answer: F

Explanation: [https://technet.microsoft.com/en-us/library/hh848697\(v=wps.630\).aspx](https://technet.microsoft.com/en-us/library/hh848697(v=wps.630).aspx)

NEW QUESTION 81

Note: This question is part of a series of questions that present the same scenario. Each question in the series contains a unique solution that might meet the stated goals.

Some question sets might have more than one correct solution, while others might not have a correct solution.

After you answer a question in this section, you will NOT be able to return to it. As a result, these questions will not appear in the review screen.

You are the system administrator for manufacturing company. You are responsible for deploying and maintaining the computers for your company. The computers are running a variety of Windows operating systems.

You have been tasked with standardizing on Windows 10 Pro.

You need to determine the correct supported option for moving each computer to Windows 10. Solution: Upgrade Windows 8.1 Pro computers to windows 10.

Does the solution meet the goal?

- A. Yes
- B. No

Answer: B

NEW QUESTION 83

You have a computer named Computer1 that runs Windows 10.

Computer1 has two volumes named C and D. Volume C is formatted NTFS and volume D is formatted exFAT.

You need to ensure that you can recover files stored in D:\Data. What should you use?

- A. System Restore points
- B. File History
- C. wbadmin.exe
- D. Backup and Restore (Windows 7)

Answer: B

Explanation: <http://www.digitalcitizen.life/introducing-windows-8-how-backup-data-file-history>

NEW QUESTION 84

Your company is developing a Universal Windows Platform (UWP) app named App1. App1 is not published in the Windows Store.

You are provided with an AppX package for App1. You need to install App1 locally.

What should you do first?

- A. From a Group Policy object (GPO), add a software installation package.
- B. From the Settings app, modify the for developers setting.
- C. Set the AppX Deployment Service (AppXSVC) to Automatic and restart the computer.
- D. Disable User Account Control (UAC).

Answer: B

Explanation: <https://msdn.microsoft.com/windows/uwp/get-started/enable-your-device-for-development>

NEW QUESTION 89

You have five computers that run Windows 8.1 Pro.

You need to perform an upgrade installation of Windows 10 on the computers. What should you do?

- A. Apply an image of Windows 10 by running imagex.exe.
- B. Start the computers from Windows PE, and then run setup.exe from a network share that contains the Windows 10 installation source files.
- C. While signed in to Windows 8.1 Pro
- D. run setup.exe from a network share that contains the Windows 10 installation source files.
- E. Start the computers from a bootable USB drive that contains the Windows 10 source files.

Answer: C

Explanation: References:

<http://www.laptopmag.com/articles/how-to-upgrade-windows-10> <https://www.groovypost.com/howto/upgrade-windows-8-1-to-windows-10/>

NEW QUESTION 93

You are the administrator for a company. All devices run Windows 10 Enterprise.

You issue all users corporate-owned phones that sync with Windows 10 by using Bluetooth.

You need to ensure that Windows 10 systems automatically secure devices when a user leaves their desk. What should you do?

- A. Configure the Lock the machine when smart card is removed setting.
- B. Implement Windows Hello for Business.
- C. Use a locked screen saver that has a five minute timeout.
- D. Implement Dynamic Lock.

Answer: B

Explanation: References:

<https://support.microsoft.com/en-za/help/4028111/windows-lock-your-windows-10-pc-automatically-when-you->

NEW QUESTION 97

Note: This question is part of a series of questions that use the same set of answer choices. Each answer choice may be used once, more than once, or not at all.

Your network contains a single Active Directory domain. The domain contains devices that run Windows 10 Enterprise.

You need to prevent computers from connecting to hosts on subnet 131.107.0.0/24. What should you do?

- A. Click Turn on password protected sharing.
- B. Disable Network Discovery.
- C. Modify the Profile settings of an incoming firewall rule.
- D. Run the Add-VpnConnectionTriggerApplication cmdlet.
- E. Run the New-NetFirewallRule cmdlet and specify the- Direction Outbound parameter.
- F. Run the New-VpnConnection cmdlet.
- G. Run the Set-NetConnectionProfile cmdlet.
- H. Run the Set-VPNConnection cmdlet.

Answer: B

Explanation: <https://blogs.technet.microsoft.com/networking/2010/12/06/disabling-network-discoverynetwork-resources/>

NEW QUESTION 102

Note: This question is part of a series of questions that use the same set of answer choices. Each answer choice may be used once, more than once, or not at all.

Your network contains a single Active Directory domain. The domain contains a VPN server that supports all of the VPN protocols.

From a computer that runs Windows 10 Pro, a user named User1 creates an SSTP VPN connection to a network named VPN1.

User1 successfully connects to the VPN server. When User1 roams between different Wi-Fi access points, the user loses the connection to the corporate network and must manually re-establish the VPN connection.

You need to ensure that VPN1 automatically maintains the connection while the user roams between Wi-Fi access points.

What should you do?

- A. Click Turn on password protected sharing.
- B. Disable Network Discovery.
- C. Modify the Profile settings of an incoming firewall rule.
- D. Run the Add-VpnConnectionTriggerApplication cmdlet.
- E. Run the New-NetFirewallRule cmdlet and specify the- Direction Outbound parameter.
- F. Run the New-VpnConnection cmdlet.
- G. Run the Set-NetConnectionProfile cmdlet.
- H. Run the Set-VPNConnection cmdlet.

Answer: D

Explanation: [https://technet.microsoft.com/en-us/library/dn296460\(v=wps.630\).aspx](https://technet.microsoft.com/en-us/library/dn296460(v=wps.630).aspx)

NEW QUESTION 105

You have a computer named Computer1 that runs Windows 10. Computer1 runs the Current Branch servicing option. Microsoft releases an upgrade to the Current Branch. The upgrade is installed on Computer1. You need to revert Computer1 to the previous version of the Current Branch. Which tool should you use?

- A. Programs and Features from Control Panel
- B. Windows Update from the Settings app
- C. Recovery from the Settings app
- D. System from Control Panel

Answer: C

Explanation: <http://www.howtogeek.com/235474/how-to-roll-back-builds-and-uninstall-updates-on-windows-10/>

NEW QUESTION 107

Note: This question is part of a series of questions that use the same scenario. For your convenience, the scenario is repeated in each question. Each question presents a different goal and answer choices, but the text of the scenario is exactly the same in each question in this series.

Start of repeated scenario

Your network contains a single Active Directory domain named adatum.com. The network contains five servers configured as shown in the following table:

Server name	Domain/workgroup	Role
DC1	Adatum.com	Domain controller
DC2	Adatum.com	Domain controller
Server1	Adatum.com	Member server
Server2	Adatum.com	Member server
<u>Test_Server</u>	Workgroup	File server

All of the servers run Windows Server 2012 R2.

Test_Server has a shared folder named ShareA. Only local users have permissions to ShareA. The network contains a mainframe computer that is administered by using the Telnet protocol. The domain contains four client computers configured as shown in the following table:

Computer name	Primary user
Computer1	User1
Computer2	User2
Computer3	User3
Computer4	User4

All of the client computers run the 64-bit version of Windows. User3 frequently accesses ShareA. Remote Desktop is enabled on Computer4.

Your company identifies the following requirements.

- Ensure that you can test unsigned device drivers on Computer1
- Enable Credential Guard on Computer2.
- Run commands and cmdlets remotely on computer2.
- Configure User Account control (UAC) on Computer3 to prompt administrators for credentials when elevated privileges are required.
- Ensure that User1 can view and interact with a desktop session of User3.
- Ensure that User2 can use Telnet to manage the mainframe.
- Ensure that User4 can use Remote Desktop to access Computer4 remotely.

End of repeated scenario.

You need to meet the requirement of User2. What should you do?

- A. Run tlntadmn.exe
- B. Install a Windows feature.
- C. Modify the membership of the TelnetClients group.
- D. Configure Windows Firewall.

Answer: C

Explanation: [https://technet.microsoft.com/en-us/library/cc770895\(v=ws.10\).aspx](https://technet.microsoft.com/en-us/library/cc770895(v=ws.10).aspx)

NEW QUESTION 109

Note: This question is part of a series of questions that use the same set of answer choices. Each answer choice may be used once, more than once, or not at all. You have a computer named Computer1 that has a virtual hard disk (VHD) named Disk1.vhdx. You plan to configure Computer1 for dual boot from Disk1.vhdx. You need to install Windows on Disk1.vhdx by using dism.exe. What should you nm before you install Windows?

- A. Add-Windows Image
- B. bcdboot.exe
- C. bcdedit.exe
- D. bootcfg.exe
- E. bootim.exe

- F. bootsect.exe
- G. diskpart.exe
- H. Expand-Windows Image

Answer: G

Explanation: <https://msdn.microsoft.com/en-us/windows/hardware/commercialize/manufacture/desktop/boot-to-vhd--native-b>

NEW QUESTION 114

A user named User1 has a computer that runs Windows 10.

User1 reports that Cortana displays news topics that the user wants to suppress. You need to suppress the news topics from being displayed. What should you modify?

- A. Reminders
- B. the Locationsettings
- C. the News app settings
- D. Notebook

Answer: D

Explanation: <http://www.makeuseof.com/tag/set-cortana-remove-windows-10/>

NEW QUESTION 119

You have a computer named Computer1 that has the following stored credentials:

Which two passwords can be viewed in clear text from Credential Manager on Computer1?

- A. the web credential for accessing the HTTPS URL
- B. the Windows credential for accessing the shared folder
- C. the Windows credential for accessing the HTTP URL
- D. the Windows credential for accessing Remote Desktop
- E. the web credential for accessing the HTTP URL

Answer: BD

Explanation: <http://www.digitalcitizen.life/credential-manager-where-windows-stores-passwords-other-login-details>

NEW QUESTION 120

You are the system administrator for a company. You plan to run Windows 10 Enterprise on all devices. Groups of devices must implement specific features. You need to determine which type of deployment you should perform for each feature.

Which installation types should you use? To answer, drag the appropriate installation types to the correct features. Each installation type may be used once, more than once, or not at all. You may need to drag the split bar between panes or scroll to view content.

NOTE: Each correct selection is worth one point.

Installation types		Feature	Installation type
Windows To Go	•	Trusted Platform Module is used.	Installation type
Local Hard Drive Installation	•	Hibernate is disabled by default.	Installation type
	•	Windows Recovery Environment is available.	Installation type
	•		Installation type
	•		Installation type

Answer:

Explanation: References: <https://docs.microsoft.com/en-us/windows/deployment/planning/windows-to-go-overview>

NEW QUESTION 124

You are the administrator for a company. Devices run Windows 8.1 Pro or Windows 10 Pro. You have an on-premises Active Directory Domain Services (AD DS) domain and a Microsoft Azure Active Directory (Azure AD) environment.

You must deploy the Microsoft Store for Business.

You need to ensure that the environment meets the minimum requirements for the store. Which two options should you recommend? Each correct answer presents part of the solution. NOTE: Each correct selection is worth one point.

- A. Upgrade the Windows 8.1 Pro machines to Windows 10 Pro.
- B. Ensure all employees have an Azure AD account.
- C. Ensure all employees have an AD DS account.
- D. Run the Enable-AppV Windows PowerShell cmdlet on all computers.

Answer: AB

Explanation: References: <https://docs.microsoft.com/en-us/microsoft-store/microsoft-store-for-business-overview>

NEW QUESTION 128

Note: This question is part of a series of questions that present the same scenario. Each question in the series contains a unique solution. Determine whether the solution meets the stated goals.

A user named User1 is a member of the local Administrators group on Computer1 and Computer2. User1 fails to access the Event Viewer logs on Computer 2 from Computer 1.

User1 can connect to Computer2 remotely by using Computer Management.

You need to ensure that User1 can use Event Viewer on Computer1 to remotely view the Event Viewer logs on Computer 2.

Solution: You run winrm quick config on Computer2. Does this meet the goal?

- A. Yes
- B. No

Answer: B

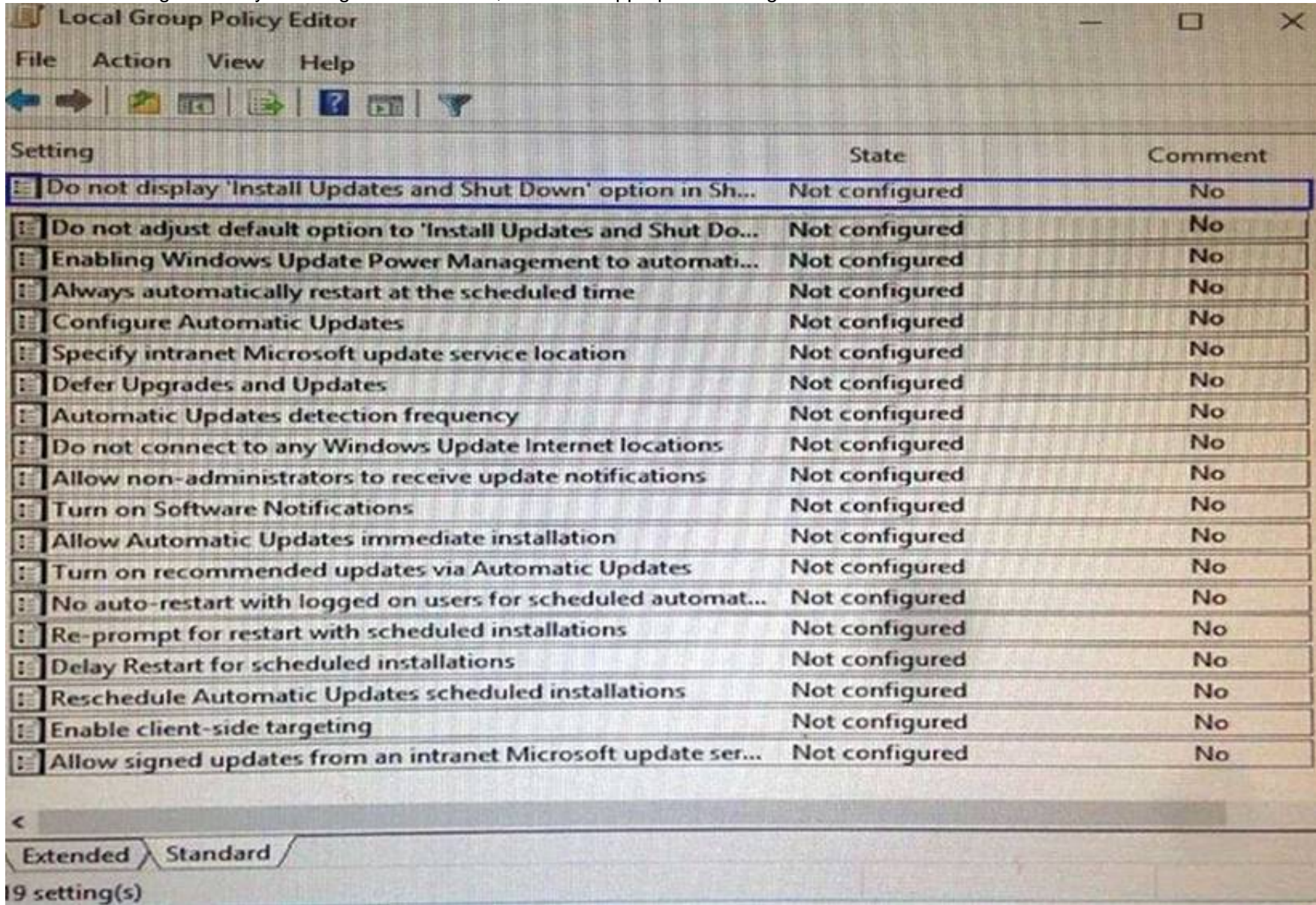
Explanation: <https://technet.microsoft.com/en-us/library/ff700227.aspx>

NEW QUESTION 131

You have a Windows Server Update Services (WSUS) server.

You need to configure a computer to receive updates from WSUS. The solution must ensure that the updates are installed only on Sunday at 20:00.

Which two settings should you configure? To answer, select the appropriate settings in the answer area.



Setting	State	Comment
Do not display 'Install Updates and Shut Down' option in Sh...	Not configured	No
Do not adjust default option to 'Install Updates and Shut Do...	Not configured	No
Enabling Windows Update Power Management to automati...	Not configured	No
Always automatically restart at the scheduled time	Not configured	No
Configure Automatic Updates	Not configured	No
Specify intranet Microsoft update service location	Not configured	No
Defer Upgrades and Updates	Not configured	No
Automatic Updates detection frequency	Not configured	No
Do not connect to any Windows Update Internet locations	Not configured	No
Allow non-administrators to receive update notifications	Not configured	No
Turn on Software Notifications	Not configured	No
Allow Automatic Updates immediate installation	Not configured	No
Turn on recommended updates via Automatic Updates	Not configured	No
No auto-restart with logged on users for scheduled automat...	Not configured	No
Re-prompt for restart with scheduled installations	Not configured	No
Delay Restart for scheduled installations	Not configured	No
Reschedule Automatic Updates scheduled installations	Not configured	No
Enable client-side targeting	Not configured	No
Allow signed updates from an intranet Microsoft update ser...	Not configured	No

Answer:

Explanation: Specify intranet Microsoft Update service location

NEW QUESTION 133

You administer a Windows 10 Enterprise computer. The computer has File History turned on, and system protection turned on for drive C.

You accidentally delete a folder named Libraries\Customers by using the Shift+Delete keyboard shortcut. You need to restore the most recent version of the folder to its original location.

Which approach should you use to restore the folder?

- A. Recycle Bin
- B. the latest restore point
- C. File History
- D. a manually selected restore point

Answer: C

Explanation: File History is similar to Previous Versions in previous versions of Windows. It takes regular backups of your data and saves them to a separate disk volume or external drive. When File History is enabled, it backs up all the system libraries and your custom libraries by default. To restore a deleted folder, you can browse to the parent folder or library and select Restore Previous Versions. The Previous Versions tab will list the previous versions that can be restored to its original location or restored to an alternative location.

NEW QUESTION 134

You have a computer named Computer1 that runs Windows 10.

You run the Get-VMHost | fl* cmdlet on Computer1, and you receive the following output:

```
ComputerName           : COMPUTER1
LogicalProcessorCount   : 4
ResourceMeteringSaveInterval : 01:00:00
HostNumaStatus          : {COMPUTER1}
NumaStatus              : {}
IovSupport              : False
IovSupportReasons       : {SR-IOV is not supported on this version of Windows.}
InternalNetworkAdapters : {External network}
ExternalNetworkAdapters : {External network_External}
SupportedVmVersions     : {5.0, 6.2, 7.0}
SecureBootTemplates     : {MicrosoftWindows, MicrosoftUEFICertificateAuthority}
EnableEnhancedSessionMode : False
FibreChannelWwn         : C003FF0000FFFF00
FibreChannelWwnMaximum  : C003FFA43B08FFFF
FibreChannelWwnMinimum  : C003FFA43B080000
MacAddressMaximum       : 00155DCD23FF
MacAddressMinimum       : 00155DCD2300
NumaSpanningEnabled     : True
VirtualHardDiskPath     : C:\VMs
VirtualMachinePath      : C:\VMs
FullyQualifiedDomainName : WORKGROUP
MemoryCapacity          : 8499589120
Name                    : COMPUTER1
MaximumStorageMigrations : 2
MaximumVirtualMachineMigrations : 2
UseAnyNetworkForMigration : False
VirtualMachineMigrationAuthenticationType : CredSSP
VirtualMachineMigrationEnabled : False
VirtualMachineMigrationPerformanceOption : TCP/IP
CimSession              : CimSession: .
IsDeleted               : False
```

Use the drop-down menus to select the answer choice that completes each statement based on the information presented in the output.

Answer Area

You [answer choice] storage migrations on Computer1.

▼

cannot perform
can perform a maximum of two concurrent
can perform a maximum of four concurrent
can perform a maximum of eight concurrent

You [answer choice] virtual machine migrations from Computer1 to another Hyper-V host.

▼

cannot perform
can perform a maximum of two concurrent
can perform a maximum of four concurrent
can perform a maximum of eight concurrent

Answer:

Explanation: *Box 1*

can perform a maximum of two concurrent

Box 2

can perform a maximum of two concurrent <https://technet.microsoft.com/de-de/library/hh848524.aspx>

NEW QUESTION 135

You manage the Windows 10 Enterprise devices for a company. All devices are a part of the Semi-Annual Channel and have an active connection to the Internet. Employees use the Microsoft OneDrive for Business website for file storage needs.

Employees must be able to browse all of their files and folders in OneDrive by using File Explorer. You must minimize the storage space that is used for local OneDrive files.

You need to configure the devices.

Which four actions should you perform in sequence? To answer, move the appropriate actions from the list of actions to the answer area and arrange them in the correct order.

Actions

Answer Area

Enable **Make all files available under the choose folders** options and click **OK**.

Select **Settings** on the OneDrive systray icon.

Enable the **Save space and download files as you use them** option.

Log on to the OneDrive sync client.

Select **Settings** on the portal page.

Log on to the OneDrive portal website.

Answer:

Explanation:

Actions

Answer Area

Enable **Make all files available under the choose folders** options and click **OK**.

Select **Settings** on the OneDrive systray icon.

Enable the **Save space and download files as you use them** option.

Log on to the OneDrive sync client.

Select **Settings** on the portal page.

Log on to the OneDrive portal website.

Log on to the OneDrive sync client.

Select **Settings** on the OneDrive systray icon.

Enable **Make all files available under the choose folders** options and click **OK**.

Enable the **Save space and download files as you use them** option.

A company plans to test an application in a Windows 10 Enterprise installation that runs in a virtual hard disk (VHD). You create and generalize a Windows 10 image. You need to create and boot from the VHD. Which three commands should you perform in sequence? To answer, move the appropriate actions from the list of actions to the answer area and arrange them in the correct order.

Actions	Answer Area
dism	
diskpart	
sysprep	
bcdboot	

Answer:

Explanation:

Actions	Answer Area
dism	diskpart
diskpart	dism
sysprep	bcdboot
bcdboot	

NEW QUESTION 141

Which term is used to refer to installing apps directly to a device without going through the Windows Store?

- A. SQL Injection
- B. BranchCache
- C. DLL Hijack
- D. Sideload

Answer: D

Explanation: When you side load an app, you deploy a signed app package to a device. You maintain the signing, hosting, and deployment of these apps, instead of installing the apps from Windows Store.

NEW QUESTION 146

Your networks contain a single Active Directory domain. On a domain controller, an administrator creates a custom Microsoft Management Console (MMC) that uses the Active Directory Users and Computer snap-in. The domain contains a computer named Computer1 that runs Windows 10. You use the computer to perform management tasks. You copy the custom MMC to the computer. You need to ensure that you can use MMC and all of the features of the MMC. What should you do on Computer1?

- A. Enable the Sideload apps developer feature.
- B. Install the Remote Server Administration Tools (RSAT).
- C. Install the Microsoft Application Compatibility Toolkit (ACT).

D. Disable User Account Control (UAC).

Answer: B

Explanation: <http://blogs.msmvps.com/acefekay/2012/08/24/delegate-active-directory-users-and-computers-aduc-then-create->

NEW QUESTION 148

Note: This question is part of a series of questions that present the same scenario. Each question in the series contains a unique solution that might meet the stated goals. Some question sets might have more than one correct solution, while others might not have a correct solution.

After you answer a question in this section, you will NOT be able to return to \t. As a result, these questions will not appear in the review screen.

You have been tasked with standing on Windows.

You are the system administrator for moving each computer windows 10. Solution: Upgrade Windows 8 Pro computer to Windows 10.

Does the solution meet the goal?

- A. Yes
- B. No

Answer: B

NEW QUESTION 149

Note: This question is part of a series of questions that use the same set of answer choices. Each answer choice may be used once, more than once, or not at all.

Your network contains a single Active Directory domain. The domain contains a VPN server that supports all of the VPN protocols.

You have mobile devices that run Windows 10 and have VPN connection to the VPN server.

You need to ensure that when users work remotely and Connect to the VPN, only traffic for the corporate network is sent through the VPN server.

What should you do?

- A. Click Turn on password protected sharing.
- B. Disable Network Discovery.
- C. Modify the Profile settings of an incoming firewall rule.
- D. Run the Add-VpnConnectionTriggerApplication cmdlet.
- E. Run the New-NetFirewallRule cmdlet and specify the-Direction Outbound parameter.
- F. Run the New-VpnConnection cmdlet.
- G. Run the Set-NetConnectionProfile cmdlet.
- H. Run the Set-VPNConnection cmdlet.

Answer: H

Explanation: [https://technet.microsoft.com/en-us/library/jj554823\(v=wps.630\).aspx](https://technet.microsoft.com/en-us/library/jj554823(v=wps.630).aspx)

NEW QUESTION 152

Note: This question is part of a series of questions that use the same scenario. For your convenience, the scenario is repeated in each question. Each question presents a different goal and answer choices, but the text of the scenario exactly the same in each question in this series.

Start of repeated scenario

Your network contains a single Active Directory domain named contoso.com. All computers are members of the domain and run the 64-bit version of Windows 10 Enterprise.

On a test computer named Computer_Test1, you pin several company-specific applications in a group named Contoso Apps, and then you export the start menu layout to a file named contoso.xml.

You install Client Hyper-V on a computer named Computer6. You identify the following requirements.

- Install the Hyper V feature on a computer named Computer1.
- Use virtual smart card authentication on a computer named Computer2.
- Enable Secure Boot on a computer named Computer3.
- Connect a computer named Computer4 to a projector by using Miracast.
- Ensure that a user named User 1 can use keyboard shortcuts by pressing one key at a time.
- Ensure that you can share the clipboard between Computer6 and the virtual machines running on Computer6.
- Add the Contoso Apps group to the Start menu of a computer named Computer7.

End of repeated scenario.

Which hardware feature must Computer3 support.

- A. Data Execution Prevention (DEP)
- B. Unified Extensible Firmware Interface (UEFI)
- C. Trusted Platform Module (TPM)
- D. Second LevelAddress Translation (SLAT)

Answer: B

Explanation: <https://www.microsoft.com/en-us/windows/windows-10-specifications>

NEW QUESTION 157

Note: This question is part of a series of a questions that use the same set of answer choices. Each answer choice may be used once, more than once, or not at all.

You have a computer named Computer1 that has storage configured as shown in the following table.

Disk name	Size	Storage pool name
Disk1	200 GB	Pool1
Disk2	100 GB	Pool1
Disk3	500 GB	Pool1
Disk4	500 GB	Pool2
Disk5	500 GB	Pool2
Disk6	800 GB	None
Disk7	100 GB	Pool3
Disk8	100 GB	Pool3

Pool1 contains a storage space named Space1 that is 300 GB. Pool3 contains a storage space named Space2 that is 100 GB. Pool2 is empty. Disk8 fails. You add a new disk named Disk9 to Pool3. You need to remove Disk8 from Pool3. What should you use?

- A. Add-PhysicalDisk
- B. Diskpart
- C. New-VirtualDisk
- D. Remove-PhysicalDisk
- E. Resize-VirtualDisk
- F. Set-StoragePool
- G. Subst
- H. Update-Disk

Answer: D

Explanation: [https://technet.microsoft.com/en-us/library/dn782852\(v=ws.11\).aspx#BKMK_Step6RemoveOldDisk](https://technet.microsoft.com/en-us/library/dn782852(v=ws.11).aspx#BKMK_Step6RemoveOldDisk)

NEW QUESTION 161

Your organization has a shared OneDrive for Business location with video files used for self-paced training. When users attend the training, they synchronize files from the OneDrive for Business location to their computers.

A user named User1 is fired from the company and maliciously deleted all files that were on the local machine, causing all files on OneDrive for Business and synchronized to all users' deleted.

User1 also emptied the recycle bin on the local machine. You need to restore the video files.

What should you do?

- A. Restore the files by using the Clear-RecycleBin Windows PowerShell cmdlet.
- B. Restore the files from another computer's recycle bin.
- C. Restore the files from the OneDrive for Business recycle bin.
- D. Restore the files from the second stage OneDrive for Business recycle bin.

Answer: C

Explanation: You should restore the files from the OneDrive for Business recycle bin. When synchronized files are deleted locally, it also triggers a delete operation on OneDrive for Business and on all machines connected to the same share.

You should not restore the files by using the Clear-RecycleBin Windows PowerShell cmdlet. This cmdlet would attempt to empty the local recycle bin again.

You should not restore the files from another computer's recycle bin. When the delete operation is triggered from OneDrive for Business, files are not placed in the recycle bin of the local machines.

You should not restore the files from the second stage OneDrive for Business recycle bin. The user never cleared the recycle bin in OneDrive for Business, so the files would not have ended up in the second stage recycle bin.

References:

<https://support.office.com/en-us/article/restore-deleted-files-or-folders-in-onedrive-949ada80-0026-4db3-a953-c>

NEW QUESTION 166

You have a computer named Computer1 that has a shared folder named Share1. Share1 has the permissions configured as shown in the following table:

Service principal name (SPN)	NTFS permission	Share permission
User1	Read	Change
User2	Modify	Full control
User3	Modify	None

You need to ensure that User1 can change files in Share1. User1 must be prevented from deleting files created by other users.

How should you configure the permissions? To answer, select the appropriate options in the answer area.

Permission type that must be configured for User1:

NTFS

Share

Permission to grant to User1:

Change

Full control

Modify

Read and Write

Answer:

Explanation: Box1: NTFS
 Box2: Modify

NEW QUESTION 170

Note: This question is part of a series of questions that use the same scenario. For your convenience, the scenario is repeated in each question. Each question presents a different goal and answer choices, but the text of the scenario is exactly the same in each question in this series.

Start of repeated scenario

Your network contains a single Active Directory domain named contoso.com. All computers are members of the domain and run the 64-bit version of Windows 10 Enterprise.

On a test computer named Computer_Test1, you pin several company-specific applications in a group named Contoso Apps, and then you export the start menu layout to a file named contoso.xml.

You install Client Hyper-V on a computer named Computer6.

You identify the following requirements.

- Install the Hyper V feature on a computer named Computer1.
- Use virtual smart card authentication on a computer named Computer2.
- Enable Secure Boot on a computer named Computer3.
- Connect a computer named Computer4 to a projector by using Miracast.
- Ensure that a user named User 1 can use keyboard shortcuts by pressing one key at a time.
- Ensure that you can share the clipboard between Computer6 and the virtual machines running on Computer6.
- Add the Contoso Apps group to the Start menu of a computer named Computer7.

End of repeated scenario.

Which hardware feature must Computer4 must support?

- A. a Wi-Fi adapter
- B. a Bluetooth adapter
- C. an HDMI port
- D. a MiniDisplayPort connector

Answer: A

Explanation: <https://www.microsoft.com/en-za/windows/windows-10-specifications#sysreqs>

NEW QUESTION 173

Note: This question is part of a series of questions that present the same scenario. Each question in the series contains a unique solution that might meet the stated goals. Some question sets might have more than once correct solution, while others might not have a correct solution.

A company has a client device that runs Windows 10 Pro. The device has a folder named Folder1. The folder is configured using the following settings:

Permission type	Group	Action
Share	Administrators	Full Control
Share	Users	Read
Share	Everyone	Modify
NTFS	Administrators	Full Control
NTFS	Users	Modify

A user reports that they cannot change documents when accessing them over the network. You need to ensure that the users can change documents in the folder.

Solution: You set the Everyone group share permission to Full Control. Does the solution meet the goal?

- A. Yes
- B. No

Answer: B

NEW QUESTION 178

Note: This question is part of a series of questions that use the same set of answer choices. Each answer choice may be used once, more than once, or not at all.
 You have 10 computers that run Windows 10 Pro. The computers are in a workgroup.
 A computer named PC_User1 has shared folder named Share1. Users are not prompted for credentials when they access Share1.
 You modify the permissions on Share1 so that the share is shared only to a user named User1.
 You need to ensure that when users from other computers in the workgroup access Share1, they must authenticate by using the credentials of User1.
 What should you do?

- A. Click Turn on password protected sharing.
- B. Disable Network Discovery.
- C. Modify the Profile settings of an incoming firewall rule.
- D. Run the Add-VpnConnectionTriggerApplication cmdlet.
- E. Run the New-NetFirewallRule cmdlet and specify the- Direction Outbound parameter.
- F. Run the New-VpnConnection You modify to ensure thta cmdlet.
- G. Run the Set-NetConnectionProfile cmdlet.
- H. Run the Set-VPNConnection cmdlet.

Answer: A

Explanation: <http://www.isunshare.com/windows-10/turn-off-or-on-password-protected-sharing-in-windows-10.html>

NEW QUESTION 182

Note: This question is part of a series of questions that use the same scenario. For your convenience, the scenario is repeated in each question. Each question presents a different goal and answer choices, but the text of the scenario is exactly the same in each question in this series.

Start of repeated scenario

Your network contains a single Active Directory domain named adatum.com. The network contains five servers configured as shown in the following table.

Server name	Domain/workgroup	Role
DC1	Adatum.com	Domain controller
DC2	Adatum.com	Domain controller
Server1	Adatum.com	Member server
Server2	Adatum.com	Member server
Test_Server	Workgroup	File server

All of the servers run Windows Server 2012 R2.

Test_Server has a shared folder named ShareA. Only local users have permissions to ShareA. The network contains a mainframe computer that is administered by using the Telnet protocol.

The domain contains four client computers configured as shown in the following table.

Computer name	Primary user
Computer1	User1
Computer2	User2
Computer3	User3
Computer4	User4

All of the client computers run the 64-bit version of Windows. User3 frequently accesses ShareA. Remote Desktop is enabled on Computer4.

Your company identifies the following requirements.

- Ensure that you can test unsigned device drivers on Computer1
- Enable Credential Guard on Computer2.
- Run commands and cmdlets remotely on computer2.
- Configure User Account control (UAC) on Computer3 to prompt administrators for credentials when elevated privileges are required.
- Ensure that User1 can view and interact with a desktop session of User3.
- Ensure that User2 can use Telnet to manage the mainframe.
- Ensure that User4 can use Remote Desktop to access Computer4 remotely.

End of repeated scenario.

You need to recommend a solution to meet the requirements of User1. What should you include in the recommendation?

- A. Remote Access Connection Manager
- B. Remote Desktop
- C. Remote Assistance
- D. Windows PowerShell Remoting

Answer: C

Explanation: <http://www.technig.com/set-up-windows-remote-assistance/>

NEW QUESTION 184

You purchase licenses for several apps from the Windows Store and you list the apps in your Windows Store for Business.

You need to tell users how to install the apps. What should you instruct the users to use?

- A. the Windows Store app and a Microsoft account
- B. a web browser and a Microsoft Azure Active Directory (Azure AD) account
- C. the Windows Store app and a Microsoft Azure Active Directory (Azure AD) account
- D. a web browser and a Microsoft account

Answer: C

Explanation: <https://technet.microsoft.com/en-us/itpro/windows/manage/distribute-apps-from-your-private-store>

NEW QUESTION 188

Your network contains a single Active Directory domain. The domain contains a computer that runs Windows 10. You plan to use the computer to test applications. You need to install Windows Insider Preview builds on the computer. What should you do?

- A. From Group Policy, configure the Add features to Windows 10 settings.
- B. From the Settings app, configure the Advanced options for Windows Update.
- C. From Group Policy, configure the Windows Update settings.
- D. From the Settings app, select Developer mode.

Answer: B

Explanation: <http://www.howtogeek.com/224826/how-to-become-a-windows-insider-and-test-new-windows-10-features/>

NEW QUESTION 191

You have 10 computers that run Windows 10 Pro. The computers currently receive updates as part of the Current Branch. You need to configure the computers to receive updates as part of Current Branch for Business. What should you do?

- A. Select the Defer upgrades check box.
- B. Upgrade to Windows 10 Enterprise.
- C. Change the product key.
- D. Clear the Give me updates for other Microsoft products when I update check box.

Answer: A

Explanation: <http://windowsitpro.com/windows-10/configure-machine-use-current-branch-business-windows-10>

NEW QUESTION 194

A company has client computers that run Windows 10. Each computer has two hard drives. You need to create a dynamic volume on each computer that maximizes write performance with data fault tolerance. Which kind of dynamic volume should you create?

- A. Striped Volume
- B. RAID 5 Volume
- C. Spanned Volume
- D. Mirrored Volume

Answer: D

Explanation: [https://technet.microsoft.com/en-us/library/cc737048\(v=ws.10\).aspx#w2k3tr_ddisk_what_zcub](https://technet.microsoft.com/en-us/library/cc737048(v=ws.10).aspx#w2k3tr_ddisk_what_zcub).

NEW QUESTION 197

Your company uses a Window Store for Business that contains an app named App1. You have three computers that are prevented from accessing the Internet. You need to distribute App1 to the three computers. What are two possible ways to achieve the goal? Each correct answer presents a complete solution.

- A. a provisioning package created by using Windows Imaging and Configuration Designer
- B. A deployment from Microsoft Intune.
- C. A deployment from Windows Deployment Services (WDS)
- D. an AppX package deployed by using Deployment Imaging Servicing and Management (DISM)
- E. an answer file created by using Windows System Image Manager (Windows SIM)

Answer: DE

Explanation: <https://technet.microsoft.com/en-us/itpro/windows/deploy/windows-deployment-scenarios-and-tools>

NEW QUESTION 199

Note: This question is part of a series of questions that use the same scenario. For your convenience, the scenario is repeated in each question. Each question presents a different goal and answer choices, but the text of the scenario is exactly the same in each question in this series.

Start of repeated scenario

Your network contains a single Active Directory domain named adatum.com. The network contains five servers configured as shown in the following table.

Server name	Domain/workgroup	Role
DC1	Adatum.com	Domain controller
DC2	Adatum.com	Domain controller
Server1	Adatum.com	Member server
Server2	Adatum.com	Member server
Test_Server	Workgroup	File server

All of the servers run Windows Server 2012 R2.

Test_Server has a shared folder named ShareA. Only local users have permissions to ShareA. The network contains a mainframe computer that is administered by using the Telnet protocol.

The domain contains four client computers configured as shown in the following table.

Computer name	Primary user
Computer1	User1
Computer2	User2
Computer3	User3
Computer4	User4

All of the client computers run the 64-bit version of Windows. User3 frequently accesses ShareA. Remote Desktop is enabled on Computer4.

Your company identifies the following requirements.

- Ensure that you can test unsigned device drivers on Computer1
 - Enable Credential Guard on Computer2.
 - Run commands and cmdlets remotely on computer2.
 - Configure User Account control (UAC) on Computer3 to prompt administrators for credentials when elevated privileges are required.
 - Ensure that User1 can view and interact with a desktop session of User3.
 - Ensure that User2 can use Telnet to manage the mainframe.
 - Ensure that User4 can use Remote Desktop to access Computer4 remotely.
- End of repeated scenario.

You need to meet the requirement for administering Computers remotely. Which remote management technology should you use?

- A. Windows PowerShell remoting
- B. Telnet
- C. C.Ps Exec
- D. Remote Desktop

Answer: B

Explanation: <https://technet.microsoft.com/en-us/library/bb491013.aspx>

NEW QUESTION 202

You have a Key Management Service (KMS) host and an administrative workstation named Computer1. From Computer1, you need to validate the activation status on a computer named Computer2.

What should you run?

- A. Get-RDLicenseConfiguration computer2
- B. slmgr.vbs computcr2 /dlv
- C. winrs.exe -r:Computer2 netdom.exe
- D. ospp.vbs /tokact:computer2

Answer: B

Explanation: <http://www.howtogeek.com/245445/how-to-use-slmgr-to-change-remove-or-extend-your-windows-license/>

NEW QUESTION 207

company has client devices that run Windows 7 Professional with Service Pack 1 or Windows 8 Pro. The company plans to use Windows telemetry and Upgrade Readiness to upgrade all devices to Windows 10 Pro.

You need to ensure that you can collect the Upgrade Readiness inventory and telemetry data. What should you do first?

- A. Enable data sharing on the client computers.. Enable connection settings on the client computers.
- B. Upgrade the Windows 8 Pro computers to Windows 8.1 Pro.
- C. Change the Windows 8 Pro computers to Windows 8 Enterprise.

Answer: C

Explanation: References: <https://docs.microsoft.com/en-us/windows/deployment/upgrade/upgrade-readiness-requirements>

NEW QUESTION 212

In this section, you will see one or more sets of questions with the same scenario and problem. Each question presents a unique solution to the problem, and you must determine whether the solution meets the stated goals. Any of the solutions might solve the problem. It is also possible that none of the solutions solve the problem.

Once you answer a question in this section, you will NOT be able to return to it. As a result, these questions will not appear in the review screen.
Note: This question is part of a series of questions that present the same scenario. Each question in the series contains a unique solution. Determine whether the solution meets the stated goals.
Your network contains a single Active Directory domain named contoso.com. The domain contains two computers named Computer1 and Computer2.
A user named User1 is a member of the local Administrators group on Computer1 and Computer2.
User1 fails to access the Event Viewer logs on Computer2 from Computer1. User1 can connect to Computer2 remotely by using Computer Management.
You need to ensure that User1 can use Event Viewer on Computer1 to remotely view the Event Viewer logs on Computer2.
Solution: You start the Remote Registry services on Computer2. Does this meet the goal?

- A. Yes
- B. No

Answer: B

Explanation: [https://technet.microsoft.com/en-us/library/cc754820\(v=ws.11\).aspx](https://technet.microsoft.com/en-us/library/cc754820(v=ws.11).aspx)

NEW QUESTION 215

Your network contains a single Active Directory domain named contoso.com.
The domain contains two computes named Computer1 and Computer2 and a domain controller named DC1. On Computer1, you run the net user Uscr1 command and you receive the following output:

User name	User1
Full Name	User1
Comment	
User's comment	
Country/region code	000 (System Default)
Account active	Yes
Account expires	Never
Password last set	11.4.2016 17:15:20
Password expires	23.5.2016 17:15:20
Password changeable	12.4.2016 17:15:20
Password required	Yes
User may change password	Yes
Workstations allowed	All
Logon script	
User profile	
Home directory	
Last logon	Never
Logon hours allowed	All
Local Group Memberships	*Marketing *Users
Global Group memberships	*None

Use the drop-down menus to select the answer choice that completes each statement based on the information presented in the output.

Answer Area

You can configure Logon hours allowed for User1 by using the [answer choice]

- ▼
- Local Users and Groups console
- Net accounts command
- Net user command
- Set-ADObject cmdlet
- Set-ADUser cmdlet

User1 can sign in to [answer choice]

- ▼
- Computer1 only
- Computer1 and Computer2 only
- Computer1, Computer2, and DC1

Answer:

Explanation: Box1. Net accounts command Box2. Computer1 only
<https://technet.microsoft.com/en-us/library/bb490698.aspx>

NEW QUESTION 218

You are in the process of planning the deployment of Windows 10 Enterprise for an organization. Most of the devices are used by employees to perform their daily tasks. All devices have Microsoft Office installed. A few specific devices are used to control equipment in the manufacturing process. The application used by these systems has only been tasked to work with Windows 10 Enterprise build 1703. You need to select the appropriate servicing model for the manufacturing systems so that they are not updated automatically with new Windows 10 build versions. You must have the option of updating the manufacturing systems to new builds after they have been thoroughly tested by the IT team. Which servicing model should you implement?

- A. Slow Ring
- B. Release Preview Ring
- C. Long-Team Servicing Channel
- D. Semi-Annual Channel

Answer: C

NEW QUESTION 223

You have a laptop that has a high resolution display. The Change the size of the text, apps, and other items setting is set to 175%. You install a desktop application name App1. When you start App1, the visual elements are misaligned, and the application interface does not appear as expected. You need to ensure that App1 is displayed properly without affecting how other applications are displayed. What should you do?

- A. Create an AppX package for App1.
- B. Run App1 as an administrator.
- C. Modify the Compatibility settings of App1.
- D. Configure an AppLocker rule for App1.

Answer: A

Explanation: <https://msdn.microsoft.com/en-us/library/hh454036.aspx#ImageSize>

NEW QUESTION 228

You have a computer named Computer1 that runs Windows 10 Enterprise. Computer1 is configured to receive Windows updates from the Internet. If a user is logged on to Computer1, you need to prevent Computer1 from automatically restarting without the logged on user's consent after the installation of the Windows updates. What should you do?

- A. Enable the Defer upgrades setting.
- B. Edit the Automatic App Update scheduled task.
- C. Configure the Choose how updates are delivered setting.
- D. Configure the Choose how updates are installed setting.

Answer: D

Explanation: In the Choose how updates are installed setting, you can use the drop-down menu to choose an option: The Schedule a restart option will allow the user to choose when the computer is restarted. Of the answers given, this is the only way to prevent Computer1 from automatically restarting without the logged on user's consent after the installation of the Windows updates.

NEW QUESTION 231

Note: This question is part of a series of questions that use the same scenario. For your convenience, the scenario is repeated in each question. Each question presents a different goal and answer choices, but the text of the scenario is exactly the same in each question in this series.

Start of repeated scenario

Your network contains a single Active Directory domain named adatum.com. The network contains five servers configured as shown in the following table:

Server name	Domain/workgroup	Role
DC1	Adatum.com	Domain controller
DC2	Adatum.com	Domain controller
Server1	Adatum.com	Member server
Server2	Adatum.com	Member server
Test_Server	Workgroup	File server

All of the servers run Windows Server 2012 R2. Test_Server has a shared folder named ShareA. Only local users have permissions to ShareA. The network contains a mainframe computer that is administered by using the Telnet protocol. The domain contains four client computers configured as shown in the following table:

Computer name	Primary user
Computer1	User1
Computer2	User2
Computer3	User3
Computer4	User4

All of the client computers run the 64-bit version of Windows. User3 frequently accesses ShareA. Remote Desktop is enabled on Computer4. Your company identifies the following requirements.

- Ensure that you can test unsigned device drivers on Computer1
- Enable Credential Guard on Computer2.
- Run commands and cmdlets remotely on computer2.
- Configure User Account control (UAC) on Computer3 to prompt administrators for credentials when elevated privileges are required.
- Ensure that User1 can view and interact with a desktop session of User3.
- Ensure that User2 can use Telnet to manage the mainframe.
- Ensure that User4 can use Remote Desktop to access Computer4 remotely.

End of repeated scenario.

You need to configure Computer3 to meet the UAC requirement. What should you use?

- A. User Account Control Settings
- B. Credential Manager
- C. Security Options in the Computer Configuration of the Local Computer Policy.
- D. Security Settings in the User Computer of the Local Computer Policy.

Answer: C

Explanation: <http://www.ghacks.net/2013/06/20/how-to-configure-windows-uac-prompt-behavior-for-admins-and-users/>

NEW QUESTION 236

You are the administrator for a company. All devices run Windows 10 Enterprise. Users report that their Windows 10 systems are taking longer than normal to boot up.

You need to configure the Windows 10 systems to record the processes and services that are loaded and running during the boot process.

What should you do?

- A. Use the Task Manager tool to enable a boot log.
- B. Use the Task Manager Startup tab to list the process and services that run at startup.
- C. Use the Task Manager Services tab to list the services that start at boot.
- D. Use the System Configuration tool to enable a boot log.

Answer: D

Explanation: References: <https://winaero.com/blog/enable-boot-log-windows-10/>

NEW QUESTION 239

You are evaluating a third-party antivirus application on a computer.

You attempt to uninstall the application, but the application fails to uninstall.

You need to remove the antivirus application from the computer. The solution must preserve user data and installed applications.

What should you do?

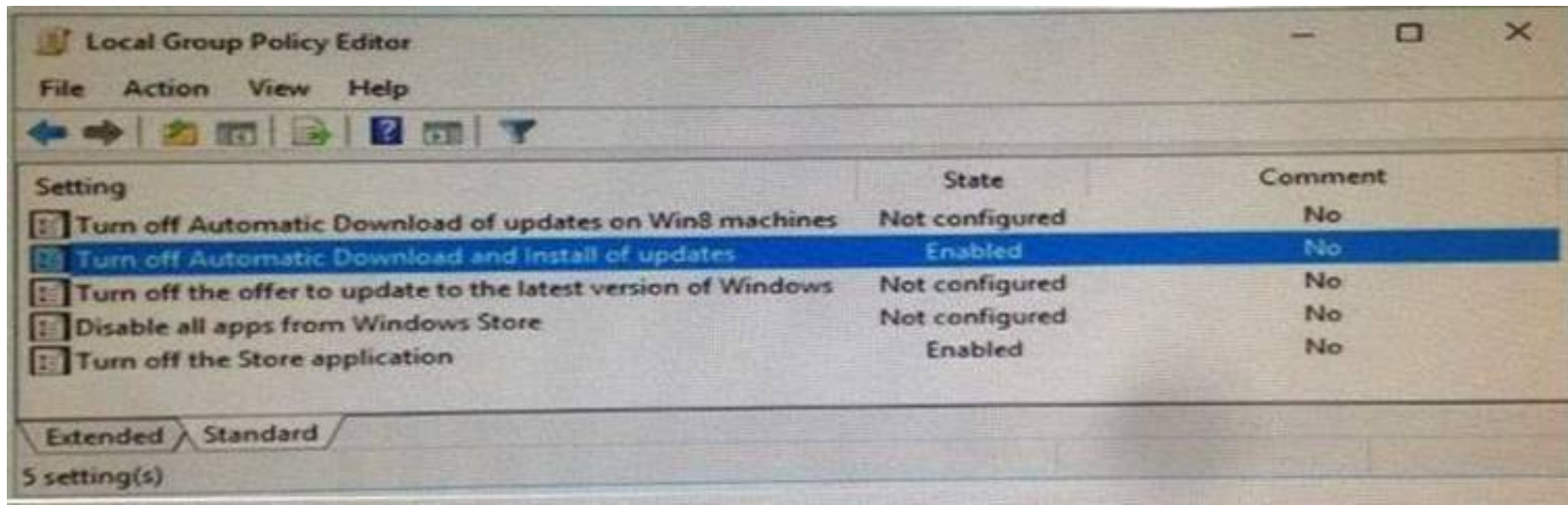
- A. Perform a driver rollback.
- B. Perform a restore by using File History.
- C. Restore a System Restore point.
- D. Use the Reset this PC option

Answer: C

Explanation: <https://support.microsoft.com/en-za/help/12415/windows-10-recovery-options>

NEW QUESTION 244

You configure the Group Policy settings on a computer that runs Windows 10 as shown in the following graphic:



Use the drop-down menus to select the answer choice that completes each statement based on the information graphic.

Answer Area

On the computer, the Windows Store app will [answer choice].

▼

be unavailable
have updates installed
be available to administrators only

All preinstalled applications [answer choice].

▼

will be updated
cannot be launched
never receive updates

Answer:

Explanation: *Box 1*

be unavailable

Box 2

never receive updates

<https://technet.microsoft.com/en-us/itpro/windows/manage/stop-employees-from-using-the-windows-store> <https://www.windows-security.org/33e3086c986daafa5c4a04eac23a1bf2/turn-off-automatic-download-and-insta>

NEW QUESTION 248

Note: This question is part of a series of questions that use the same set of answer choices. Each answer choice may be used once, more than once, or not at all. You have a computer named Computer1.

Computer1 has a virtual hard disk (VHD) named Disk1.vhdx. Disk1.vhdx has an NTFS partition, which is visible in File Explorer as drive E.

You need to provision Windows 10 on Disk1.vhdx. What should you run?

- A. Add-WindowsImage
- B. bcdboot.exe
- C. bcdedit.exe
- D. bootcfg.exe
- E. bootim.exe
- F. bootsect.exe
- G. Gdiskpart.exe
- H. Expand-WindowsImage

Answer: H

Explanation: <https://bcrawfordjr.wordpress.com/2014/10/05/install-windows-10-tech-preview-in-a-bootable-vhd/>

NEW QUESTION 252

You are using sysprep to prepare a system for imaging.

You want to reset the security ID (SID) and clear the event logs.

Which option should you use?

- A. /generalize
- B. /oobe
- C. /audit

D. /unattend

Answer: A

Explanation: Generalize prepares the Windows installation to be imaged.

If this option is specified, all unique system information is removed from the Windows installation. The security ID (SID) resets, any system restore points are cleared, and event logs are deleted.

The next time the computer starts, the specialize configuration pass runs. A new security ID (SID) is created, and the clock for Windows activation resets, if the clock has not already been reset three times.

NEW QUESTION 253

You have five computers that run Windows 8.

You need to perform an upgrade installation of Windows 10 on the computers.

What are two possible ways to achieve the goal? Each correct answer presents a complete solution.

- A. Apply an image of Windows 10 by running imagex.exe.
- B. Start the computers from Windows PE, and then run setup.exe from a network share that contains the Windows 10 installation source files.
- C. While signed in to Windows 8, run setup.exe from a network share that contains the Windows 10 installation source files.
- D. Start the computers from a bootable USB drive that contains the Windows 10 source files.
- E. Apply updates by using Windows Update.

Answer: D

Explanation: <http://www.laptopmag.com/articles/how-to-upgrade-windows-10>

NEW QUESTION 258

You have a computer named Computer1 that runs Windows 10.

On Computer1, C:\Folder1 has the permissions configured as shown in the following table. You share C:\Folder1 as Folder1 and you grant access to the Everyone group.

Folder1 has the following share settings:

ShareState	: Online
AvailabilityType	: NonClustered
ShareType	: FileSystemDirectory
FolderEnumerationMode	: AccessBased
CachingMode	: Manual
SmbInstance	: Default
CATimeout	: 0
ConcurrentUserLimit	: 0
EncryptData	: False
Name	: Folder1
Path	: C:\Folder1
Scoped	: False
ScopeName	: *
SecurityDescriptor	: O:8AG:DUD:(A;;0x1200a9;;;WD)

What level of access does User1 have to Folder1?

- A. User1 cannot see the Folder1 share on the network and cannot connect to Folder1.
- B. User1 can see the Folder1 share on the network and can connect to Folder1.
- C. User1 cannot see the Folder1 share on the network but can connect to Folder1.
- D. User1 can see the Folder1 share on the network but cannot connect to Folder1.

Answer: B

NEW QUESTION 263

Your network contains a single Active Directory domain. The domain contains a laptop named Computer1 that runs Windows 10.

A user named User1 uses Computer1. Computer1 connects to two shared printers named Printer1 and Printer2. Printer1 is located at the office and Printer2 is located at the home of User1.

User1 frequently reports that when attempting to print, the default printer is set to Printer2. You need to ensure that Printer1 is the default printer always.

What should you do?

- A. Add Printer 2 to a home group.
- B. Disable Let Windows manage my default printer.
- C. Change the priority of Printer1 to 1.
- D. Change the priority of Printer2 to 1.

Answer: B

Explanation: <http://www.tenforums.com/tutorials/26138-printer-turn-off-let-windows-10-manage-default-printer.html>

NEW QUESTION 265

Note: This question is part of a series of questions that use the same set of answer choices. Each answer choice may be used once, more than once, or not at all.
 You purchase a new USB drive. You apply a custom image of Windows to the USB drive.
 You plan to modify the BIOS setting on a computer so that the computer can start from the USB drive. You need to ensure that you can start the computer by using the USB drive.
 What should you run?

- A. Add-Windows Image
- B. bcdboot.exe
- C. bcdedit.exe
- D. bootcfg.exe
- E. bootim.exe
- F. bootsect.exe
- G. diskpart.exe
- H. Expand-Windows Image

Answer: D

Explanation: <https://support.microsoft.com/en-us/help/317521/description-of-the-bootcfg-command-and-its-uses>

NEW QUESTION 270

You have a computer that runs Windows 10 Pro.
 You receive a SMART alert that the hard disk drive will fail soon. You connect a second external hard disk drive to the computer.
 You need to create a backup that you can use to restore the operating system and the user documents to a replacement drive.
 What should you use?

- A. vssadmin.exe
- B. wbadmin.exe
- C. Start-WBBackup
- D. Start-OBBackup

Answer: B

Explanation: <http://www.backup-utility.com/windows-10/windows-10-wbadmin-4348.html>

NEW QUESTION 275

You manage an Active Directory Domain Service (AD DS) domain for a company. All employee devices are joined to the domain. You have the following four domain controllers: DC01, DC02, DC03 and DC04. All employee devices are joined to the domain. You deploy Windows 10 Pro to all devices.
 You are currently using volume activation. You experience Windows licensing activation issues with a computer named Computer01. You need to investigate the licensing issues for the problem computer. What should you do? To answer, configure the appropriate options in the dialog box in the answer area.
 NOTE: Each correct selection is worth one point.

On	▼	.run	▼	▼
Computer01		Slnmgr.vbs		/dlv
DC01		Get-KdsConfiguration		/t c:\temp\licensing.txt
		shui.exe		

Answer:

Explanation:

On	▼	.run	▼	▼
Computer01		Slnmgr.vbs		/dlv
DC01		Get-KdsConfiguration		/t c:\temp\licensing.txt
		shui.exe		

NEW QUESTION 276

You have a Windows 10 Enterprise computer named Computer1. Computer1 has File History enabled. You create a folder named Folder1 in the root of the C: drive.
 You need to ensure that Folder1 is protected by File History.
 What are two possible ways to achieve the goal? Each correct answer presents a complete solution.

- A. From File Explorer, include Folder1 in an existing library.
- B. Modify the Advanced settings from the FileHistory Control Panel item.

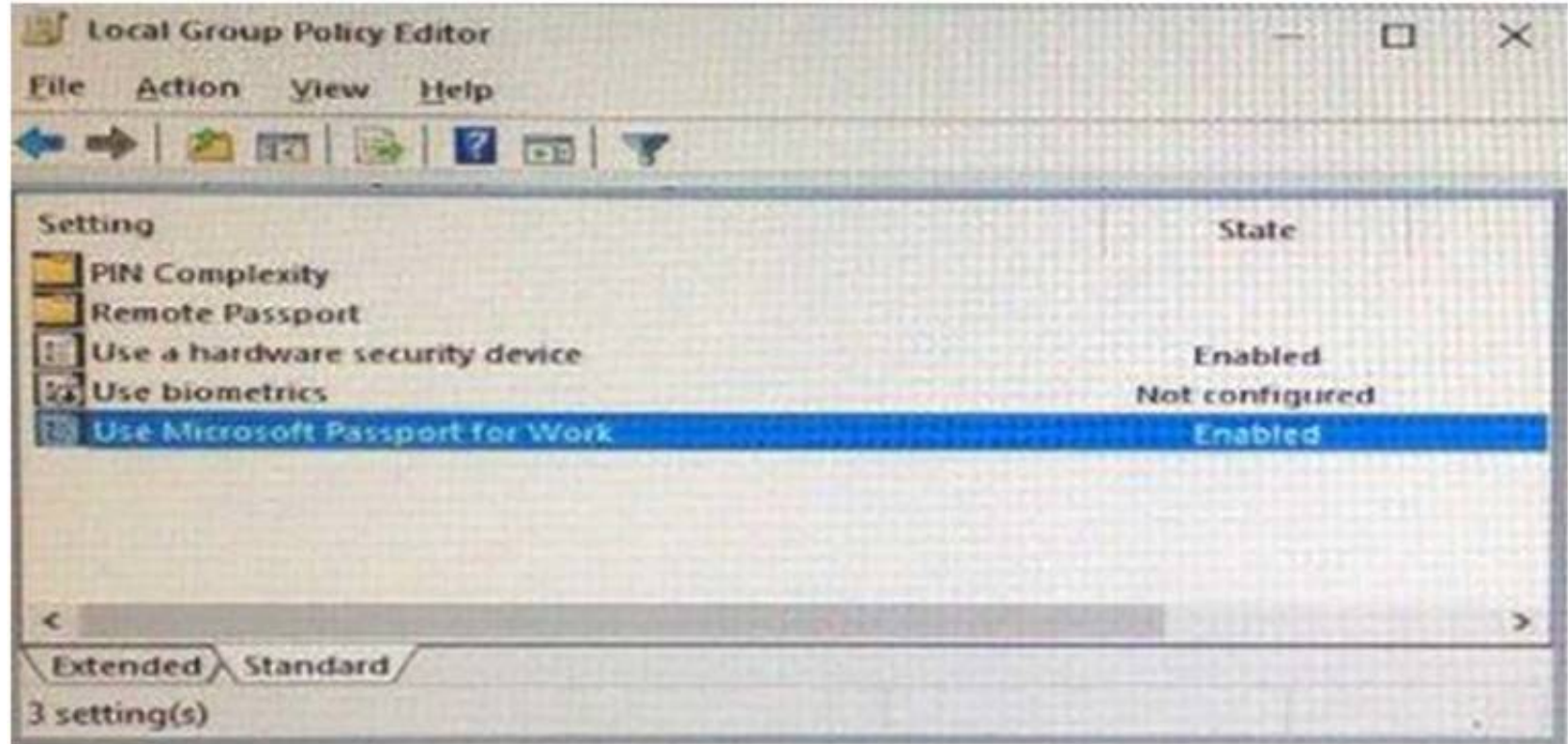
- C. From the Settings app, modify the Backup options.
- D. From File Explorer, modify the system attribute of Folder1.

Answer: AC

Explanation: By default, File History backs up all libraries. We can therefore ensure that Folder1 is protected by File History by adding the folder to a library. The second method of ensuring that Folder1 is protected by File History is to add the folder location to File History. You do this by modifying the Backup options, not the File History Control Panel item as you might expect. In the Settings app, select Update & Security then Backup. Under the Back up using File History heading, select the Add a drive option.

NEW QUESTION 281

You configure a Group Policy on a computer that runs Windows 10 Enterprise as shown in the following graphic:



Use the drop-down menus to select the answer choice that completes each statement based on the information presented in the graphic.

Answer Area

To sign in to the computer, the user [answer choice].

must always enter a PIN
can use a PIN or a hardware security device
must always use a hardware security device

For this configuration, a [answer choice] is required.

USB key protector
Trusted Platform Module (TPM) chip
Second Level Address Translation (SLAT) –capable processor

Answer:

Explanation: *Box 1*
must always use a PIN
Box 2

Trusted Platform Module (TPM) chip <https://redmondmag.com/articles/2016/05/01/active-directory.aspx>

NEW QUESTION 284

You are the administrator for a company. All devices run Windows 10 Enterprise. The Multiple Activation Key (MAK) that you use is compromised. You have been issued a new MAK. You need to implement a script that updates the key for devices and forces the devices to perform online activation. Which three actions should you include in sequence in the script? To answer, move the appropriate actions from the list of actions to the answer area and arrange them in the correct order.

Actions	Answer Area
Open an elevated command prompt.	
Slmgr /upk	
Slmgr /dli	
Slmgr /ato	
Slmgr /ipk	
Slmgr /xpr	

Answer:

Explanation: References:

<https://www.howtogeek.com/245445/how-to-use-slmgr-to-change-remove-or-extend-your-windows-license/>

NEW QUESTION 285

company manages Windows 8.1 Pro and Windows 10 Pro client devices by using Group Policy objects (GPOs). The company plans to migrate from GPOs to mobile device management (MDM) policies.

You need to create an HTML report of the GPO settings that are cross-referenced with supported MDM policies.

Solution: You run DISM on the client computers and generate a report. Does the solution meet the goal?

- A. Yes
- B. No

Answer: B

NEW QUESTION 288

You have a computer named Computer1 that runs Windows 10. Computer1 has a printer named Printer1 installed.

You need to configure the settings of Printer1 remotely from another computer. Which tool should you use on the remote computer?

- A. Device Manager from Control Panel
- B. Print Management from Administrative Tools
- C. Printers & scanners from the Setting app
- D. Devices and Printers from Control Panel

Answer: B

Explanation: [https://technet.microsoft.com/en-us/library/cc753109\(v=ws.10\).aspx](https://technet.microsoft.com/en-us/library/cc753109(v=ws.10).aspx)

<http://www.howto-connect.com/print-management-tool-in-windows-10/>

NEW QUESTION 290

Note: This question is part of a series of questions that use the same set of answer choices. Each answer choice may be used once, more than once, or not at all.

You have a computer named Computer1.

Computer1 has a virtual hard disk (VHD) named Disk1.vhdx. Disk1.vhdx has an NTFS partition, which is visible in File Explorer as drive E.

You need to apply a Windows 10 image to drive E. What should you run?

- A. Add-WindowsImage
- B. bcdboot.exe
- C. bcdedit.exe
- D. bootcfg.exe
- E. bootim.exe
- F. bootsect.exe
- G. diskpart.exe
- H. Expand-WindowsImage

Answer: A

NEW QUESTION 291

Note: This question is part of a series of questions that use the same set of answer choices. Each answer choice may be used once, more than once, or not at all.

You have a computer named Computer1 that has storage configured as shown in the following table:

Disk name	Size	Storage pool name
Disk1	200 GB	Pool1
Disk2	100 GB	Pool1
Disk3	500 GB	Pool1
Disk4	500 GB	Pool2
Disk5	500 GB	Pool2
Disk6	800 GB	None
Disk7	100 GB	Pool3
Disk8	100 GB	Pool3

Pool1 contains a storage space named Space1 that is 300 GB. Pool3 contains a storage space named Space2 that is 100 GB. Pool2 is empty. You need to add Disk6 to Pool1. What should you use?

- A. Add-PhysicalDisk
- B. Diskpart
- C. New-VirtualDisk
- D. Remove-PhysicalDisk
- E. Resize-VirtualDisk
- F. Set-StoragePool
- G. Subst
- H. Update-Disk

Answer: A

Explanation: [https://technet.microsoft.com/en-us/library/hh848702\(v=wps.630\).aspx](https://technet.microsoft.com/en-us/library/hh848702(v=wps.630).aspx)

NEW QUESTION 292

You have a computer named Computer1 that has the following four hard disk drives installed:
You need to create a two-way mirror by using Storage Spaces. The solution must minimize data loss. Which drives should you use?

- A. Drive 1 and Drive 2
- B. Drive 1 and Drive4
- C. Drive 2 and Drive 3
- D. Drive 3 and Drive 4

Answer: D

Explanation: <http://www.windowscentral.com/how-use-storage-spaces-windows-10>

NEW QUESTION 293

Note: This question is part of a series of questions that present the same scenario. Each question in the series contains a unique solution that might meet the stated goats Some question sets might have more than one correct solution, while others might not have a correct solution.
After you answer a question in this section, you will NOT be able to return to it. As a result, these questions will not appear in the review screen.
You are manufacturing company. You are responsible for deploying and maintaining the computers for your company. The computers are running a verify of Windows operating systems.
You have been tasked with standardizing on Windows 10 Pro.
You need to determine the correct supported option for moving computer to Windows 10. Solution: Upgrade Windows 7 Professional RTM computers to Windows 10.
Does the solution meet the goal?

- A. Yes
- B. No

Answer: B

NEW QUESTION 297

Note: This question is part of a series of questions that present the same scenario. Each question in the series contains a unique solution that might meet the stated goals. Some question sets might have more than one correct solution, while others might not have a correct solution.
After you answer a question in this scenario, you will NOT be able to return to it. As a result, these questions will not appear in the review screen.
You are the administrator for a company. All devices run Windows 10 Enterprise and are members of the Adatum.com domain. All drives on the devices are formatted with the NTFS file system and have the default permissions assigned. You have a device which is used by multiple users and stores information for a specific project. The project team members are members of a group named ProjectX.
The system is also used by other people that are not members of the ProjectX team. All files for ProjectX are stored in a folder with the path E:\ProjectX.
You have the following requirements:
*Only members of the ProjectX group must have all permissions on the folder and all of the files in it.
*ProjectX members should not be granted any specific rights to any other folders. You need to meet the requirements.
Solution: You disable inheritance on the E:\ drive and specify the remove option. You assign the Full Control permission to the Project X group.
Does the solution meet the goal?

- A. Yes
- B. No

Answer: B

NEW QUESTION 298

Note: This question is part of a series of a questions that use the same set of answer choices. Each answer choice may be used once, more than once, or not at all.

You have a computer named Computer1 that has storage configured as shown in the following table.

Disk name	Size	Storage pool name
Disk1	200 GB	Pool1
Disk2	100 GB	Pool1
Disk3	500 GB	Pool1
Disk4	500 GB	Pool2
Disk5	500 GB	Pool2
Disk6	800 GB	None
Disk7	100 GB	Pool3
Disk8	100 GB	Pool3

Pool1 contains a storage space named Space1 that is 300 GB. Pool3 contains a storage space named Space2 that is 100 GB. Pool2 is empty. You need to configure Space2 to be 2 TB. What should you use?

- A. Add-PhysicalDisk
- B. Diskpart
- C. New-VirtualDisk
- D. Remove-PhysicalDisk
- E. Resize-VirtualDisk
- F. Set-StoragePool
- G. Subst Update-Disk

Answer: E

Explanation: <https://technet.microsoft.com/en-us/library/hh848658.aspx>

NEW QUESTION 300

You are the administrator for a company. All devices run Windows 10 Enterprise and are joined to an Active Directory Domain Services domain. Administrators are unable to test network connectivity to Windows 10 devices because ping is being blocked. You need to be able to ping the devices. Solution: Create and enable an ICMPv4 Echo Request In allow rule for the Public profile. Does the solution meet the goal?

- A. Yes
- B. No

Answer: B

Explanation: References:
<https://www.howtogeek.com/howto/windows-vista/allow-pings-icmp-echo-request-through-your-windows-vista>

NEW QUESTION 301

Note: This question is part of a series of questions that use the same scenario. For your convenience, the scenario is repeated in each question. Each question presents a different goal and answer choices, but the text of the scenario exactly the same in each question in this series.

Start of repeated scenario

Your network contains a single Active Directory domain named contoso.com. All computers are members of the domain and run the 64-bit version of Windows 10 Enterprise.

On a test computer named Computer_Test1, you pin several company-specific applications in a group named Contoso Apps, and then you export the start menu layout to a file named contoso.xml.

You install Client Hyper-V on a computer named Computer6. You identify the following requirements.

- Install the Hyper V feature on a computer named Computer1.
- Use virtual smart card authentication on a computer named Computer2.
- Enable Secure Boot on a computer named Computer3.
- Connect a computer named Computer4 to a projector by using Miracast.
- Ensure that a user named User 1 can use keyboard shortcuts by pressing one key at a time.
- Ensure that you can share the clipboard between Computer6 and the virtual machines running on Computer6.
- Add the Contoso Apps group to the Start menu of a computer named Computer7.

End of repeated scenario.

Which hardware component is required for Computer1?

- A. Trusted Platform Module (TPM)
- B. Trusted Boot
- C. Second Level Address Translation (SLAT)
- D. Secure Boot

Answer: C

Explanation: <https://www.microsoft.com/en-us/windows/windows-10-specifications>

NEW QUESTION 302

A company manages Windows 8.1 Pro and Windows 10 Pro client devices by using Group Policy objects (GPOs). The company plans to migrate from GPOs to mobile device management (MDM) policies.

You need to create an HTML report of the GPO settings that are cross-referenced with supported MDM policies.

Solution: You enroll the client computers in the Operations Management Suite.

Does the solution meet the goal?

- A. Yes
- B. No

Answer: B

NEW QUESTION 306

Note: This question is part of a series of questions that use the same set of answer choices. Each answer choice may be used once, more than once, or not at all.

A user connects to a wireless network and receives the following message:

"Do you want to allow your PC to be discoverable by other PCs and devices on this network?" The user clicks No.

The user is unable to browse to the shared folders of other computers on the network by using File Explorer. You need to ensure that the user can browse to the other computers.

What should you do?

- A. Click Turn on password protected sharing.
- B. Disable Network Discovery.
- C. Modify the Profile settings of an incoming firewall rule.
- D. Run the `Add-VpnConnectionTriggerApplicationcmdlet`.
- E. Run the `New-NetFirewallRule` cmdlet and specify the `-Direction Outbound` parameter.
- F. Run the `New-VpnConnection` cmdlet.
- G. Run the `Set-NetConnectionProfile` cmdlet.
- H. Run the `Set-VPNConnection` cmdlet.

Answer: G

Explanation: [https://technet.microsoft.com/en-us/library/jj899565\(v=wps.630\).aspx](https://technet.microsoft.com/en-us/library/jj899565(v=wps.630).aspx) <https://www.itechtics.com/change-network-type-windows-10/>

NEW QUESTION 307

You are reconfiguring storage on a computer running Windows 10.

You need to add an existing disk that is already installed in the computer to an existing storage pool. Which Windows utility or Windows PowerShell cmdlet should you use?

- A. `Set-StoragePool`
- B. `Diskpart`
- C. `Resize-StorageTier`
- D. `Add-PhysicalDisk`

Answer: D

Explanation: You should use the `Add-PhysicalDisk` cmdlet.

The `Add-PhysicalDisk` cmdlet lets you add a physical disk to the specified storage pool.

You should not use the `Diskpart` tool. This tool enables you to manage disk objects (disks, partitions, or volumes) by using scripts or direct input at a command prompt. However, it does not support the ability to add a hard disk to a storage pool.

You should not use the `Set-StoragePool` cmdlet. The `Set-StoragePool` cmdlet modifies the properties of a specified storage pool, but not the disks assigned to the storage pool.

You should not use the `Set-StorageTier` cmdlet. This cmdlet is used to increase the size of a storage tier created from a storage pool. It does not let you modify the storage pool.

References:

<https://docs.microsoft.com/en-us/powershell/module/storage/add-physicaldisk?view=win10-ps>

NEW QUESTION 309

A user named User1 has a laptop that runs Windows 10 Pro.

At home, User1 connects to the home network by using an Ethernet connection. User1 reports that he sometimes exceeds his Internet data limit.

You need to prevent the laptop from downloading Windows updates automatically. What should you do?

- A. From a local Group Policy, modify the Windows Update settings.
- B. From a local Group Policy, modify the Network Connections settings.
- C. From the Settings app, configure a metered connection.
- D. From the Settings app, select `Defer upgrades`.

Answer: C

Explanation: <http://www.pcworld.com/article/3085136/windows/two-ways-to-control-or-stop-windows-10-updates.html>

NEW QUESTION 314

In this section, you will see one or more sets of questions with the same scenario and problem. Each question presents a unique solution to the problem, and you

must determine whether the solution meets the stated goals. Any of the solutions might solve the problem. It is also possible that none of the solutions solve the problem.

Once you answer a question in this section, you will NOT be able to return to it. As a result, these questions will not appear in the review screen.

Note: This question is part of a series of questions that present the same scenario. Each question in the series contains a unique solution. Determine whether the solution meets the stated goals.

You have a computer named Computer1 that runs Windows 10. File History is turned on.

The user of Computer1 reports that previous versions of D:\Folder\File1.doc are unavailable from the Previous Versions tab.

You need to ensure that the previous versions of the file are created.

Solution: Create a backup of drive D by using Backup and Restore (Windows 7). Does this meet the goal?

- A. Yes
- B. No

Answer: A

Explanation: <http://www.howtogeek.com/209080/how-to-restore-previous-versions-of-a-file-on-any-operating-system/>

NEW QUESTION 317

You are using sysprep to prepare a system for imaging.

You want to reset the security ID (SID) and clear the event logs. Which option should you use?

- A. /generalize
- B. /oobe
- C. /audit
- D. /unattend

Answer: A

Explanation: <https://msdn.microsoft.com/en-us/windows/hardware/commercialize/manufacture/desktop/sysprep-command-line>

NEW QUESTION 320

You install Windows 10 on a computer named Computer1. Computer1 is a member of a workgroup and will be used by multiple users to browse the Internet.

You need to ensure that a file named Policy1.docx appears on the desktop of Computer1 for all users who use the computer. The solution must minimize the number of copies of Policy1.docx.

What should you do?

- A. Copy Policy1.docx to C:\Users\Default\Desktop.
- B. From a Group Policy object (GPO), modify the Desktop settings.
- C. Use a Group Policy object (GPO) to configure Folder Redirection.
- D. Copy Policy1.docx to C:\Users\Public\Desktop.

Answer: D

Explanation: <http://www.digitalcitizen.life/what-public-folder-how-use-it>

NEW QUESTION 324

You have three computers configured as shown in the following table.

Computer name	Operating system	Upgrade requirement
Computer1	Windows 7	Retain all installed applications.
Computer2	Windows 7	Remove all locally installed applications, but retain access to the user files.
Computer3	Windows 8	Remove all locally installed applications.

Computer name	Operating system	Upgrade requirement
Computer1	Windows 7	Retain all installed applications.
Computer2	Windows 7	Remove all locally installed applications, but retain access to the user files.
Computer3	Windows 8	Remove all locally installed applications.

You plan to migrate the computers to Windows 10.

Which installation option should you use for each computer? To answer, select the appropriate options in the answer area.

Computer1:

	▼
Custom	
Upgrade	

Computer2:

	▼
Custom	
Upgrade	

Computer3:

	▼
Custom	
Upgrade	

Answer:

Explanation: Box1: Upgrade Box2: Custom Box3: Custom

<https://technet.microsoft.com/en-us/itpro/windows/deploy/windows-upgrade-and-migration-considerations>

NEW QUESTION 328

You are the desktop administrator for a company. You plan to deploy a new custom application named App1. All employees must be able to find and install the application. Users who are not employees must not be able to find or install the application. You need to configure access for App1. What should you do?

- A. Allow access to the Microsoft Store and publish App1.
- B. Run the Publish-Module Windows PowerShell cmdlet.
- C. Implement Microsoft Store for Business and publish App1.
- D. Run the Publish-BCWebContent Windows PowerShell cmdlet.

Answer: C

NEW QUESTION 332

In this section, you will see one or more sets of questions with the same scenario and problem. Each question presents a unique solution to the problem, and you must determine whether the solution meets the stated goals. Any of the solutions might solve the problem. It is also possible that none of the solutions solve the problem.

Once you answer a question in this section, you will NOT be able to return to it. As a result, these questions will not appear in the review screen.

Note: This question is part of a series of questions that present the same scenario. Each question in the series contains a unique solution. Determine whether the solution meets the stated goals.

Your network contains a single Active Directory domain named contoso.com. The domain contains two computers named Computer1 and Computer2.

A user named User1 is a member of the local Administrators group on Computer1 and Computer2.

User1 fails to access the Event Viewer logs on Computer2 from Computer1. User1 can connect to Computer2 remotely by using Computer Management.

You need to ensure that User1 can use Event Viewer on Computer1 to remotely view the Event Viewer logs on Computer2.

Solution: You run Enable-PSRemoting on Computer1. Does this meet the goal?

- A. Yes
- B. No

Answer: B

Explanation: <http://www.howtogeek.com/117192/how-to-run-powershell-commands-on-remote-computers/>

NEW QUESTION 334

You have computers that run Windows 10.

You need to identify both active malware instances and past malware instances from the last three months. Which command should you run?

- A. Get-EventSubscriber
- B. Get-MpThreatCatalog
- C. Get-WindowsErrorReporting
- D. Get-MpThreatDetection

Answer: D

Explanation: <https://technet.microsoft.com/en-us/library/dn433290.aspx>

NEW QUESTION 336

.....

Thank You for Trying Our Product

We offer two products:

1st - We have Practice Tests Software with Actual Exam Questions

2nd - Questions and Answers in PDF Format

70-698 Practice Exam Features:

- * 70-698 Questions and Answers Updated Frequently
- * 70-698 Practice Questions Verified by Expert Senior Certified Staff
- * 70-698 Most Realistic Questions that Guarantee you a Pass on Your First Try
- * 70-698 Practice Test Questions in Multiple Choice Formats and Updates for 1 Year

100% Actual & Verified — Instant Download, Please Click
[Order The 70-698 Practice Test Here](#)