

70-345 Dumps

Designing and Deploying Microsoft Exchange Server 2016

<https://www.certleader.com/70-345-dumps.html>



NEW QUESTION 1

You need to recommend how many database availability groups (DAGs) and how many namespaces must be added to the site resilience solution to meet the availability requirements.

How many namespaces and DAGs should you recommend adding? To answer, select the appropriate options in the answer area.

NOTE: Each correct selection is worth one point.

Number of namespaces:

▼
One
Two
Three
Four

Number of DAGs:

▼
One
Two
Three
Four

Answer:

Explanation: Box 1: Number of namespaces: Four Box 2: Number of Dags: Two

Depending on your architecture and infrastructure you have two choices: These choices are tied to the DAG architecture.

-Deploy a unified namespace for the site resilient datacenter pair (unbound model).

-In an unbound model, you have a single DAG deployed across the datacenter pair.

-Deploy a dedicated namespace for each datacenter in the site resilient pair (bound model).

In a bound model, multiple namespaces are preferred, two per datacenter (primary and failback namespaces), to prevent clients trying to connect to the datacenter where they may have no connectivity.

As its name implies, in a bound model, users are associated (or bound) to a specific datacenter. In other words, there is preference to have the users operate out of one datacenter during normal operations and only have the users operate out of the second datacenter during failure events. There is also a possibility that users do not have equal connectivity to both datacenters. Typically, in a bound model, there are two DAGs deployed in the datacenter pair. Each DAG contains a set of mailbox databases for a particular datacenter; by controlling where the databases are mounted, you control connectivity.

From scenario:

The servers in the New York and London offices are members of a database availability group (DAG).

Fabrikam identifies the following high-availability requirements for the planned deployment:

Mailbox databases that contain mailboxes for the New York office users must only be activated on the servers in the London office manually.

All client access connections to the London and New York offices must use load-balanced namespaces. The load balancing mechanism must perform health checks.

References: <https://blogs.technet.microsoft.com/exchange/2015/10/06/namespace-planning-in-exchange-2016/>

NEW QUESTION 2

You deploy Layer 7 load balancers to the New York and London offices.

You are planning the namespace configuration that will be used once you complete the planned upgrade to Exchange Server 2016.

You need to recommend a solution to meet the connectivity requirements for the namespaces. What should you recommend?

- A. On the New York office servers, change the internal URLs to mail.fabrikam.com.
- B. On all of the branch office servers, change the external URLs to Snull.
- C. On all of the branch office servers, change the external URLs to mail.fabnkam.com.
- D. On the New York office servers, change the internal URLs to Snull.

Answer: C

Explanation: Scenario:

Fabrikam connectivity requirements include: The number of namespaces used for client access must be minimized.

Each office is configured to use a separate namespace for client access. The New York office is configured to use a namespace of mail.fabrikam.com.

NEW QUESTION 3

You begin to implement the Exchange Server 2016 servers and plan to decommission the Exchange Server 2013 servers during the next six months.

You need to recommend which actions must be performed to support the planned changes for document collaboration.

You install Microsoft Office Online Server on a new server.

Which two cmdlets should you recommend running next? Each correct answer presents part of the solution.

- A. New-OfficeWebAppsFarm
- B. Set-PartnerApplication

- C. Set-MailboxServer
- D. New-OfficeWebAppsHost
- E. Set-OrganizationConfig

Answer: AC

NEW QUESTION 4

You need to recommend changes to the messaging infrastructure. The changes must meet the connectivity requirements after the planned upgrade. Which two actions should you recommend? Each correct answer presents part of the solution.

- A. From the Mailbox servers, import the Edge Subscription file.
- B. On the Edge Transport Servers, start Edge Synchronization.
- C. On the Edge Transport servers, import the Edge Subscription file.
- D. On the Edge Transport servers, create an Edge Subscription file.
- E. On the Mailbox servers, restart the Microsoft Exchange Transport service.

Answer: AE

NEW QUESTION 5

You plan to create a new mailbox for the auditing department.

You need to recommend which task must be performed immediately after the mailbox is created. The solution must meet the compliance requirements. What should you recommend?

- A. Enable an archive for the new mailbox.
- B. Place the new mailbox on Litigation Hold.
- C. Run the Set-Mailbox cmdlet.
- D. Run the Start-ManagedFolderAssistant cmdlet.

Answer: B

Explanation: Fabrikam identifies the following security and compliance requirements, including:

Users who are involved in legal disputes with customers must be prevented from permanently deleting email messages pertaining to the dispute. The users must be able to delete all other messages permanently.

Note: Place a mailbox on Litigation Hold to preserve all mailbox content, including deleted items and original versions of modified items. When you place a mailbox on Litigation Hold, the user's archive mailbox (if it's enabled) is also placed on hold. Deleted and modified items are preserved for a specified period or until you remove the mailbox from Litigation Hold. All such mailbox items are returned in an In-Place eDiscovery in Exchange 2016 search.

References: [https://technet.microsoft.com/en-us/library/dn743673\(v=exchg.160\).aspx](https://technet.microsoft.com/en-us/library/dn743673(v=exchg.160).aspx)

NEW QUESTION 6

You need to configure a data loss prevention (DLP) policy to meet the compliance and security requirements. How should you configure the policy rule? To answer, select the appropriate options in the answer area.

Apply this rule if...

	▼
The recipient is outside of the organization.	
The message properties include this classification.	

And...

	▼
The recipient is outside of the organization.	
The message contains sensitive information.	

Do the following...

	▼
Add the sender's manager as a recipient.	
Generate an incident report and send the report to (email address).	
Block the message: Reject the message and include an explanation.	

And...

	▼
Redirect the message to (email address).	
Notify the sender by using a policy tip and block the message.	
Block the message: Reject the message and include an explanation.	

Answer:

Explanation:

Apply this rule if...

	▼
The recipient is outside of the organization.	
The message properties include this classification.	

And...

	▼
The recipient is outside of the organization.	
The message contains sensitive information.	

Do the following...

	▼
Add the sender's manager as a recipient.	
Generate an incident report and send the report to (email address).	
Block the message: Reject the message and include an explanation.	

And...

	▼
Redirect the message to (email address).	
Notify the sender by using a policy tip and block the message.	
Block the message: Reject the message and include an explanation.	

NEW QUESTION 7

You need to ensure that members of a group named Relecloudadmins can create user accounts and mailboxes for new employees by using Exchange Admin Center (EAC) after the planned upgrade.
What should you do first?

- A. Run the New-ManagementRole cmdlet.
- B. Run the New-ManagementRoleAssignment cmdlet.
- C. Run setup.exe and specify the /PrepareDomain parameter.
- D. Run setup.exe and specify the /prepareAD parameter.

Answer: B

Explanation: References:

[https://technet.microsoft.com/en-us/library/dd335193\(v=exchg.160\).aspx](https://technet.microsoft.com/en-us/library/dd335193(v=exchg.160).aspx)

NEW QUESTION 8

You need to meet the compliance requirements for the creation of new mailboxes after the planned upgrade. What command should you run? To answer, select the appropriate options in the answer area.

Answer Area

▼
New-Mailbox
Set-AdminAuditLogConfig
Set-Mailbox

▼
-AdminAuditLogCmdlets
-AuditEnabled
-AuditOwner

▼
-"Mailbox"
-"New-Mailbox"
\$True

Answer:

Explanation:

Answer Area

▼

New-Mailbox
Set-AdminAuditLogConfig
Set-Mailbox

▼

-AdminAuditLogCmdlets
-AuditEnabled
-AuditOwner

▼

-"Mailbox"
-"New-Mailbox"
\$True

Topic 3, Contoso Ltd,

Overview

General Overview

Contoso. Ltd. is an international company that has 3,000 employees. The company has sales, marketing, research, and human resource departments.

Physical Locations

Contoso has two main offices. The offices are located in New York and Chicago. Each office has a data center.

The New York office uses a network subnet of 10.1.0.0/16. The Chicago office uses a network subnet of 10.128.0.0/16.

The offices connect to each other by using a WAN link. Each office connects directly to the Internet.

Existing Environment

Active Directory

The network contains an Active Directory forest named contoso.com. The forest contains a single domain. All domain controllers run Windows Server 2012 R2.

The forest functional level is Windows Server 2012 R2.

The forest contains six domain controllers configured as shown in the following table.

Server name	Office	Global Catalog
DC01	Chicago	YES
DC02	Chicago	YES
DC03	Chicago	NO
DC04	New York	YES
DC05	New York	YES
DC06	New York	YES

The forest is configured as a single Active Directory site.

Active Directory administrators manage the Active Directory schema. Exchange Server administrators do not have access to modify the schema.

Contoso has deployed Active Directory Rights Management Services (AD RMS).

Current Business Model

Contoso partners with a company names Fabrikam. Inc. on manufacturing initiatives. The partnership between Contoso and Fabrikam requires that both companies share confidential information frequently.

Requirements

Business Goals

Contoso plans to install Exchange Server 2016 to provide messaging services for its users.

It must be as easy as possible for the users at Contoso to share free/busy information with the users at Fabrikam.

As much as possible. Contoso plans to minimize the costs associated with purchasing hardware and software.

Planned Changes

Contoso plans to implement the following changes before installing Exchange Server 2016:

- Install hardware Network Load Balancing (NLB) in the New York and Chicago offices.
- Implement Microsoft Office Online Servers in the New York and Chicago offices.
- Provide Contoso users with company-approved tablets.

Planned Messaging Infrastructure

You plan to create an Exchange Server 2016 organization named Contoso. You plan to deploy seven servers that will have Exchange Server 2016 installed. The servers

will be configured as shown in the following table.

Server name	Office	Global Catalog
EX01	Chicago	Mailbox server
EX02	Chicago	Mailbox server
EX03	Chicago	Mailbox server
EX04	New York	Mailbox server
EX05	New York	Mailbox server
EX06	New York	Mailbox server
FS1	Chicago	File share witness

All of the servers will be members of a database availability group (DAG) named DAG01.

Client Access Requirements

Contoso identifies the following client access requirements for the planned deployment:

- Users must be able to configure their tablet to synchronize email by using Autodiscover.
- Users must be able to access the Exchange Server organization by using the following names:
 - o Mail.contoso.com
 - o Autodiscover.contoso.com
- Users must be able to access Outlook on the web internally and externally from their tablet.
- Users must be able to access Office Online Server by using the URL of office-online.contoso.com.

Security Requirements

Contoso identifies the following security requirements for the planned deployment:

- Exchange Server mailbox databases must be encrypted while at rest.
- Users must be prevented from using Outlook on the web while they are offline.
- Contoso users must be able to share Calendar details with approved external domains only.
- Email messages sent to the users in the fabrikam.com SMTP domain must be encrypted automatically.
- Whenever possible, client computers must be directed to the same Exchange server for log collection.
- Users must be able to access their mailbox by using Exchange ActiveSync on the company-approved tablets only.
- Email messages sent from the users in the human resources department of Contoso must be protected by using AD RMS, regardless of the mail client.

Availability Requirements

Contoso identifies the following high-availability requirements for the planned deployment:

- Servers must be able to complete a restart without administrative intervention.
- The network load balancer must be able to probe the health of each workload.
- If a data center fails, the databases in the other data center must be activated automatically.
- Redundant copies of all email messages must exist in the transport pipeline before and after delivery.
- Email messages must be made highly available by the Exchange Server organization before and after delivery.
- If you manually mount the databases following the data center failure, the databases in the failed site must be prevented from mounting automatically.

NEW QUESTION 9

You need to recommend a solution that meets the security requirements for mobile devices.

Which two objects should you include in the recommendation? Each correct answer presents part of the solution.

- A. a device access rule
- B. a mobile device mailbox policy
- C. a data loss prevention (DLP) policy
- D. an Outlook Web App policy

Answer: AD

Explanation: References:

<https://technet.microsoft.com/en-us/library/dn792010.aspx> [https://technet.microsoft.com/en-us/library/dd297989\(v=exchg.160\).aspx](https://technet.microsoft.com/en-us/library/dd297989(v=exchg.160).aspx)

NEW QUESTION 10

You plan to configure the Exchange organization for site failovers.

You need to recommend how many certificates must be deployed to meet the availability requirements and the security requirements.

What is the minimum number of certificates you should recommend deploying?

- A. One
- B. Two
- C. Three
- D. Four

Answer: C

Explanation: Some services, such as Outlook Anywhere and Exchange ActiveSync, require certificates to be configured on your Exchange 2016 server.

From scenario: Security Requirements

Contoso identifies the following security requirements for the planned deployment:

Users must be able to access their mailbox by using Exchange ActiveSync on the company-approved tablets only.

Email messages sent from the users in the human resources department of Contoso must be protected by using AD RMS, regardless of the mail client.

Email messages sent to the users in the fabrikam.com SMTP domain must be encrypted automatically. And others

Exchange Server mailbox databases must be encrypted while at rest.

Users must be prevented from using Outlook on the web while they are offline.

Contoso users must be able to share Calendar details with approved external domains only. Whenever possible, client computers must be directed to the same Exchange server for log collection. References: [https://technet.microsoft.com/en-us/library/mt441782\(v=exchg.150\).aspx](https://technet.microsoft.com/en-us/library/mt441782(v=exchg.150).aspx)

NEW QUESTION 10

You need to configure the Exchange Server organization to support the security requirements for Calendar sharing.

Which three actions should you perform in sequence? To answer, move the appropriate actions from the list of actions to the answer area and arrange them in the correct order.

Actions		Answer Area	
<div>Edit the default sharing policy</div>		<div></div>	
<div>Purchase an SSL certificate from a third-party certification authority (CA).</div>		<div></div>	
<div>Create a new sharing policy.</div>	➤	<div></div>	⬆
<div>Create a federation trust.</div>	⬅		⬇
<div>Create an organization relationship.</div>			

Answer:

Explanation:

Actions		Answer Area	
<div>Edit the default sharing policy</div>		<div>Create a federation trust.</div>	
<div>Purchase an SSL certificate from a third-party certification authority (CA).</div>		<div>Create an organization relationship.</div>	
<div>Create a new sharing policy.</div>	➤	<div></div>	⬆
<div>Create a federation trust.</div>	⬅	<div>Edit the default sharing policy</div>	⬇
<div>Create an organization relationship.</div>			

NEW QUESTION 14

You plan to create a new mailbox for the auditing department.

You need to recommend which task must be performed immediately after the mailbox is created. The solution must meet the compliance requirements. What should you recommend?

- A. Enable an archive for the new mailbox.
- B. Place the new mailbox on Litigation Hold.
- C. Run the Set-Mailbox cmdlet.
- D. Run the Start-ManagedFolderAssistant cmdlet.

Answer: C

Explanation: "Any new mailbox created for the auditing department must have a retention policy named Audit immediately applied manually after the mailbox is created."

We need to run the Set-Mailbox cmdlet to apply the retention policy.

NEW QUESTION 15

You plan to configure the Exchange organization for site failovers.

You need to recommend how many certificates must be deployed to meet the availability requirements and the security requirements.

What is the minimum number of certificates you should recommend deploying?

- A. one
- B. two
- C. three
- D. four

Answer: A

NEW QUESTION 16

You implement the load balancing solution.

You need to configure the health probes to meet the availability requirements. Which URL should you configure for the probe?

- A. <https://mail.litware.com/owa/probe.htm>
- B. <https://mail.litware.com/owa/healthcheck.htm>
- C. <http://litware.com/owa/healthcheck.htm>
- D. <http://litware.com/owa/probe.htm>

Answer: B

NEW QUESTION 19

You have an Exchange Server 2016 organization.

Some users access their mailbox by using an Android or an iOS device.

You need to prevent the users from using OWA for Devices to access their mailbox. Which cmdlet should you use?

- A. Set-CASMailbox
- B. Set-MobileMailboxPolicy
- C. Set-OWAVirtualDirectory
- D. Set-OWAMailboxPolicy

Answer: A

NEW QUESTION 21

You have an Exchange Server 2016 organization named Contoso.

You create an organization relationship with a partner's Exchange Server organization named Fabrikam. The users in Fabrikam can view the free/busy information of all the users in Contoso.

You need to ensure that the users in Fabrikam can view the custom Mail Tips configured in Contoso. What command should you run in Contoso? To answer select the appropriate options in the answer area

Answer Area

<div>▼</div> <div>Set-IntraOrganizationConnector Set-OrganizationConfig Set-OrganizationRelationship</div>	"Fabrikam"	<div>▼</div> <div>-MailTipsAccessEnabled -MailTipsAccessLevel -MailTipsAccessScope</div>	<div>▼</div> <div>\$True All</div>
--	------------	--	--

Answer:

Explanation:

Answer Area

<div>▼</div> <div>Set-IntraOrganizationConnector Set-OrganizationConfig Set-OrganizationRelationship</div>	"Fabrikam"	<div>▼</div> <div>-MailTipsAccessEnabled -MailTipsAccessLevel -MailTipsAccessScope</div>	<div>▼</div> <div>\$True All</div>
--	------------	--	--

NEW QUESTION 26

You have an Exchange Server 2016 organization. The organization contains five servers. The servers are configured as shown in the following table:

Server name	Role	Active Directory site
EX01	Mailbox server	New York
EX02	Mailbox server	New York
EX03	Mailbox server	London
EX04	Mailbox server	London
SRV01	File share witness	New York
SRV02	Alternate file share witness	London

EX01, EX02, EX03, and EX04 are members of a database availability group (DAG) named DAG01. The data center in New York fails.

You need to activate DAG01 in the London site.

Which three commands should you run in sequence? To answer, move the appropriate commands from the list of commands to the answer area and arrange them in the correct order.

Commands	Answer Area
Start-DatabaseAvailabilityGroup -Identity DAG01 -ActiveDirectorySite "New York"	
Restore-DatabaseAvailabilityGroup -Identity DAG01 -ActiveDirectorySite "New York"	
Set-Service -Name clussvc -ComputerName EX03 -Status Stopped Set-Service -Name clussvc -ComputerName EX04 -Status Stopped	
Stop-DatabaseAvailabilityGroup -identity DAG01 -ActiveDirectorySite "New York" -ConfigurationOnly \$TRUE	
Stop-DatabaseAvailabilityGroup -identity DAG01 -ActiveDirectorySite "New York" -ConfigurationOnly \$FALSE	
Restore-DatabaseAvailabilityGroup -Identity DAG01 -ActiveDirectorySite "London" -AlternateWitnessServer SRV02 -AlternateWitnessDirectory D:\DAG1	
Start-DatabaseAvailabilityGroup -Identity DAG01 -ActiveDirectorySite "London"	
Set-Service -Name clussvc -ComputerName EX01 -Status Stopped Set-Service -Name clussvc -ComputerName EX02 -Status Stopped	

Answer:

Explanation:

Commands	Answer Area
Start-DatabaseAvailabilityGroup -Identity DAG01 -ActiveDirectorySite "New York"	Stop-DatabaseAvailabilityGroup -identity DAG01 -ActiveDirectorySite "New York" -ConfigurationOnly \$TRUE
Restore-DatabaseAvailabilityGroup -Identity DAG01 -ActiveDirectorySite "New York"	Set-Service -Name clussvc -ComputerName EX01 -Status Stopped Set-Service -Name clussvc -ComputerName EX02 -Status Stopped
Set-Service -Name clussvc -ComputerName EX03 -Status Stopped Set-Service -Name clussvc -ComputerName EX04 -Status Stopped	Restore-DatabaseAvailabilityGroup -Identity DAG01 -ActiveDirectorySite "London" -AlternateWitnessServer SRV02 -AlternateWitnessDirectory D:\DAG1
Stop-DatabaseAvailabilityGroup -identity DAG01 -ActiveDirectorySite "New York" -ConfigurationOnly \$TRUE	
Stop-DatabaseAvailabilityGroup -identity DAG01 -ActiveDirectorySite "New York" -ConfigurationOnly \$FALSE	
Restore-DatabaseAvailabilityGroup -Identity DAG01 -ActiveDirectorySite "London" -AlternateWitnessServer SRV02 -AlternateWitnessDirectory D:\DAG1	
Start-DatabaseAvailabilityGroup -Identity DAG01 -ActiveDirectorySite "London"	
Set-Service -Name clussvc -ComputerName EX01 -Status Stopped Set-Service -Name clussvc -ComputerName EX02 -Status Stopped	

NEW QUESTION 28

You have an Exchange Server 2016 organization. The organization contains one Edge Transport server.

A user reports that certain email messages expected from a specific recipient were never received.

You need to search for messages that were blocked by the Edge Transport because they contain attachment types that are blocked by the organization.

In which folder should you search?

- A. QueueViewer
- B. AgentLog
- C. Connectivity
- D. Routing
- E. ProtocolLog

Answer: E

NEW QUESTION 31

You have an Exchange Server 2016 organization. All users use Microsoft Outlook 2016.

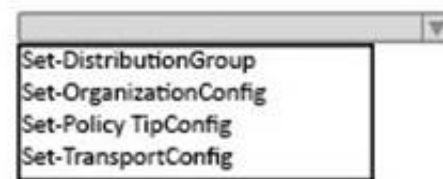
You need to configure the Exchange Server organization to meet following requirements:

- Users must be prevented from receiving a notification when they attempt to send an email message to distribution groups that contain less than 100 members.
- Users must be notified before they send email messages to an unmonitored mailbox named Service1.

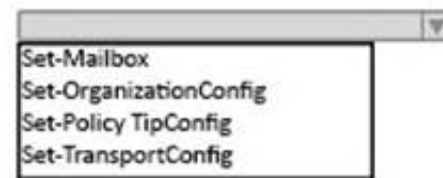
Which cmdlet should you run to meet each requirement? To answer, drag appropriate cmdlets to the correct requirements. Each cmdlet must be used once, more

than once, or not at all. You may need to drag the split bar between panes or scroll to view content.

Users must be prevented from receiving a notification when they attempt to send an email message to distribution groups that contain less than 100 members:



Users must be notified before they send email messages to an unmonitored mailbox named Service1:



Answer:

Explanation:

Users must be prevented from receiving a notification when they attempt to send an email message to distribution groups that contain less than 100 members:



Users must be notified before they send email messages to an unmonitored mailbox named Service1:



NEW QUESTION 36

You have an Exchange Server 2016 organization.

Users report that they receive an Autodiscover error when they attempt to configure a Microsoft Outlook profile. You need to view the URLs that are returned to the users when they attempt to establish an Autodiscover connection. Which command should you run from an Exchange server?

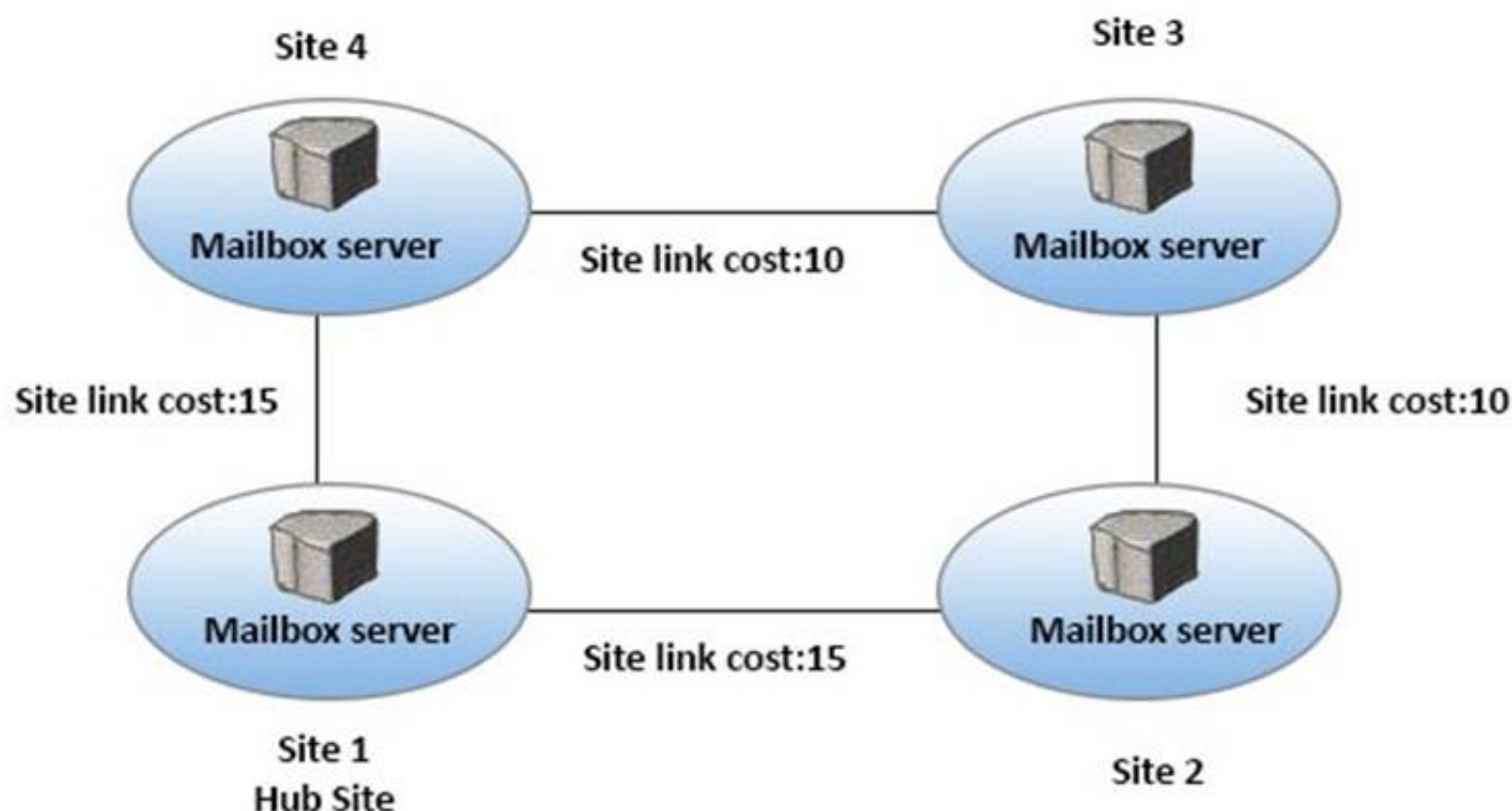
- A. Test-OutlookConnectivity
- B. Test-OutlookWebServices
- C. Test-WebServicesConnectivity
- D. Test-MAPIConnectivity

Answer: B

Explanation: Use the Test-OutlookWebServices cmdlet to verify the Autodiscover service settings for Microsoft Outlook on a computer running Microsoft Exchange Server that has the Client Access server role installed.

NEW QUESTION 40

You have an Exchange Server 2016 organization. The Active directory sites are configured as shown in the following graphic.



Use the drop-down menus to select the answer choice that completes each statement based on the information presented in the graphic.

When a user from Site 4 sends an email message to user in Site 2, the message will be [answer choice].

▼

sent directly to Site 2
 relayed throguh Site 1
 relayed throguh Site 3

If the server in Site 2 fails, all of the email messages sent from Site 4 to Site 2 will be queued on a server in [answer choice].

▼

Site 1
 Site 3
 Site 4

Answer:

Explanation:

When a user from Site 4 sends an email message to user in Site 2, the message will be [answer choice].

▼

sent directly to Site 2
 relayed throguh Site 1
 relayed throguh Site 3

If the server in Site 2 fails, all of the email messages sent from Site 4 to Site 2 will be queued on a server in [answer choice].

▼

Site 1
 Site 3
 Site 4

NEW QUESTION 41

You are planning an Exchange Server 2016 organization. The organization will contain two servers. The servers will be configured as shown in the following table.

Server name	Active Directory site
EX01	New York
EX02	London

You plan to purchase an SSL certificate that contains the following names: Mail.contoso.com

Mail.london.contoso.com Mail.newyork.contoso.com

You plan to configure a solution for the sites in New York and London. DNS will resolve the names as shown in the following table.

Host name	Resolves to
Mail.contoso.com	IP addresses of the servers in the New York and London sites
Mail.newyork.contoso.com	IP address of the server in the New York site
Mail.london.contoso.com	IP address of the server in the London site

You need to configure the client protocols to meet the following requirements:

Users who connect to their mailbox by using Outlook on the web must connect directly to a server in the site that hosts their mailbox. All Exchange ActiveSync users must connect to the same namespace.

How should you configure the virtual directories? To answer, select the appropriate options in the answer area.

EX01 OWA virtual directory ExternalUrl:	<div>▼</div> <div> https://ex01.contoso.com/owa https://mail.contoso.com/owa https://mail.london.contoso.com/owa https://mail.newyork.contoso.com/owa </div>
EX02 OWA virtual directory ExternalUrl:	<div>▼</div> <div> https://ex02.contoso.com/owa https://mail.contoso.com/owa https://mail.london.contoso.com/owa https://mail.newyork.contoso.com/owa </div>
EX01 ActiveSync virtual directory ExternalUrl:	<div>▼</div> <div> https://ex01.contoso.com/Microsoft-Server-ActiveSync https://mail.contoso.com/Microsoft-Server-ActiveSync https://mail.london.contoso.com/Microsoft-Server-ActiveSync </div>
EX02 ActiveSync virtual directory ExternalUrl:	<div>▼</div> <div> https://ex02.contoso.com/Microsoft-Server-ActiveSync https://mail.contoso.com/Microsoft-Server-ActiveSync https://mail.london.contoso.com/Microsoft-Server-ActiveSync </div>

Answer:

Explanation:

EX01 OWA virtual directory ExternalUrl:	<div>▼</div> <div> https://ex01.contoso.com/owa https://mail.contoso.com/owa https://mail.london.contoso.com/owa https://mail.newyork.contoso.com/owa </div>
EX02 OWA virtual directory ExternalUrl:	<div>▼</div> <div> https://ex02.contoso.com/owa https://mail.contoso.com/owa https://mail.london.contoso.com/owa https://mail.newyork.contoso.com/owa </div>
EX01 ActiveSync virtual directory ExternalUrl:	<div>▼</div> <div> https://ex01.contoso.com/Microsoft-Server-ActiveSync https://mail.contoso.com/Microsoft-Server-ActiveSync https://mail.london.contoso.com/Microsoft-Server-ActiveSync </div>
EX02 ActiveSync virtual directory ExternalUrl:	<div>▼</div> <div> https://ex02.contoso.com/Microsoft-Server-ActiveSync https://mail.contoso.com/Microsoft-Server-ActiveSync https://mail.london.contoso.com/Microsoft-Server-ActiveSync </div>

NEW QUESTION 43

Your network contains an Active Directory forest. The forest contains domain controllers that run Windows Server 2012 R2. The forest contains an Exchange Server 2016 organization. You need to create a database availability group (DAG). Which two actions should you perform before you create the DAG? Each correct answer presents part of the solution. NOTE: Each correct selection is worth one point.

- A. From Failover Cluster Manager, create a failover cluster.
- B. From the DNS zone, create an alias (CNAME) record for the name of the DAG.

- C. Install at least one domain controller that runs Windows Server 2016.
- D. From Active Directory, create a clustered name object (CNO).
- E. On the witness server, add the Exchange Trusted Subsystem group to the local administrators group.

Answer: AE

NEW QUESTION 44

You have an exchange Server 2016 organization that uses an SMTP domain named contoso.com. You need to encrypt all of the SMTP traffic from the organization to a partner organization.

The partner organization uses an SMTP domain named litwareinc.com.

Which three commands should you run on your server? Each correct answer presents part of the solution.

- A. New-ReceiveConnector-Name "Connector1"-Usage Internet- Bindings 0.0.0.0:587-DomainSecureEnabled: \$true
- B. Set-TransportConfig-TLSSendDomainSecureList litwareinc.com
- C. New-SendConnector-Usage Partner-Name "Connector1" -AddressSpaces "litwareinc.com"-IgnoreSTARTTLS \$false-DNSRoutingEnabled \$true -DomainSecureEnabled \$true
- D. Set-TransportConfig- TLSReceiveDomainSecureList contoso.com
- E. Set-TransportConfig-TLSReceiveDomainSecureList litwareinc.com
- F. New-SendConnector- Usage Partner -Name "Connector1" -AddressSpaces "contoso.com"-IgnoreSTARTTLS \$false-DNSRoutingEnabled \$ture -DomainSecureEnabled \$true
- G. Set-TransportConfig-TLSSendDomainSecureList contoso.com

Answer: CEG

Explanation: <http://dizdarevic.ba/ddamirblog/?p=78>

[https://technet.microsoft.com/en-us/library/bb124151\(v=exchg.160\).aspx](https://technet.microsoft.com/en-us/library/bb124151(v=exchg.160).aspx) [https://technet.microsoft.com/en-us/library/aa998936\(v=exchg.160\).aspx](https://technet.microsoft.com/en-us/library/aa998936(v=exchg.160).aspx)

NEW QUESTION 45

You have three Hyper-V hosts that each have 20 processor cores and 64 GB of RAM. Nine virtual machines are deployed to the hosts as shown in the following table.

Virtual machine name	Hyper-V host name	Number of processor cores	Amount of memory (GB)
DC1	Host1	4	8
FileServer1	Host1	4	8
WAP1	Host1	4	4
DC2	Host2	4	8
SQL1	Host2	12	32
ADFS1	Host2	4	8
Skype1	Host3	12	16
SharePoint1	Host3	12	16
SCOM1	Host3	8	12

You plan to deploy a two-node Exchange Server 2016 database availability group (DAG) by using the virtual machines. Each node will have 12 processor cores and 24 GB of memory.

You are evaluating whether you can use the existing servers for the deployment or whether you must purchase additional servers.

You need to recommend where to place the Exchange servers. The solution must minimize costs.

What is the best recommendation to achieve the goal? More than one answer choice may achieve the goal. Select the BEST answer.

- A. One Exchange server on Host1 and one Exchange server on a new Hyper-V host.
- B. One Exchange server on Host1 and one Exchange server on Host3.
- C. Both Exchange servers on Host1.
- D. One Exchange server on Host1 and one Exchange server on Host2.
- E. One Exchange server on Host2 and one Exchange server on Host3.

Answer: E

NEW QUESTION 49

Hotspot Question

A company named Contoso, Ltd. deploys Exchange Server 2016.

Contoso plans to establish a hybrid deployment between Exchange Server and a new Microsoft Office 365 tenant.

You need to identify which relative URL paths in the on-premises environment will be accessed by the Office 365 tenant.

What should you identify? To answer, select the appropriate options in the answer area

Answer Area

MailTips:

	▼
/autodiscover/autodiscover.svc	
/ews/exchange.asmx/wssecurity	
/ews/mrsproxy.svc	

Mailbox migrations:

	▼
/autodiscover/autodiscover.svc	
/ews/exchange.asmx/wssecurity	
/ews/mrsproxy.svc	

Answer:

Explanation: **Answer Area**

MailTips:

	▼
/autodiscover/autodiscover.svc	
/ews/exchange.asmx/wssecurity	
/ews/mrsproxy.svc	

Mailbox migrations:

	▼
/autodiscover/autodiscover.svc	
/ews/exchange.asmx/wssecurity	
/ews/mrsproxy.svc	

NEW QUESTION 50

Your company has a main office and a branch office. An Active Directory site exists for each office. The offices are connected by a WAN link. You plan to deploy Exchange Server 2016 in each site.

You need to identify the number of Exchange servers required to meet the following requirements:

- Maintain user access to mailboxes if a single server fails
 - Use the minimum number of Exchange servers in each site
- How many servers should you deploy in each site?

- A. 1
- B. 2
- C. 3
- D. 4

Answer: A

Explanation: The mailbox databases can be replicated to the server in the other site.

NEW QUESTION 54

All the research and development department users are members of a distribution group named rdev. Rdev receives an average of 2,000 email messages daily. You need to ensure that email sent to the rdev distribution group meets the security requirements for confidential email. The solution must minimize administrative effort.

What should you do?

- A. Create linked mailboxes for users without security clearance.
- B. Create a transport rule that filters based on keyword predicates.
- C. Create mail contacts for users without security clearance.
- D. Edit the distribution group properties and enable moderation of the group.

Answer: B

Explanation:

Actions in mail flow rules (also known as transport rules) specify what you want to do to messages that match conditions of the rule.
References: [https://technet.microsoft.com/en-us/library/aa998315\(v=exchg.160\).aspx](https://technet.microsoft.com/en-us/library/aa998315(v=exchg.160).aspx)

NEW QUESTION 56

You have an Exchange Server 2016 organization.
You have a mailbox database named PF_DB1 that contains a public folder mailbox named PF1. PF1 contains a public folder named Marketing.
Three weeks ago, a user deleted the Marketing folder.
You restore the database files from the last full backup to a recovery database named R_DB1. You need to recover Marketing folder.
What command should you run? To answer, select appropriate options in the answer area.



Answer:

Explanation:



NEW QUESTION 59

You have an Exchange Server 2016 organization.
You need to ensure that users in each department download an Offline Address Book (OAB) that only contains the users in their department. The solution must ensure that all of the users can continue to see all the other users in the organization.
Which three actions should you perform? Each correct answer presents part of the solution.

- A. Create an OAB for each department
- B. Modify the properties for each user mailbox.
- C. Create an address book policy (ABP) for each department.
- D. Create an address list for each department.
- E. Modify the properties of the default OAB.
- F. Create an email address policy for each department.

Answer: ABC

NEW QUESTION 61

You have an Exchange Server 2010 organization. The organization has 500 mailboxes and three servers. The servers are configured as shown in the following table.

Server name	Role
EX10MBX	Mailbox Server
EX10CH	Client Access server, Hub Transport server
EX10EDGE	Edge Transport server

EX10EDGE is located in the perimeter network. EX10CH has an Edge Subscription. All Internet mail flows through EX10EDGE.
You deploy an Exchange Server 2016 Mailbox server named EX16MBX to the organization. You deploy an Exchange Server 2016 Edge Transport server named EX16EDGEtothe perimeter network.
You need to transition all Internet mail to flow through EX16EDGE. The solution must minimize disruptions to the mail flow.
Which three actions should you perform in sequence? To answer, move the appropriate actions from the list of actions to the answer area and arrange them in the correct order.

Actions

Configure the perimeter Firewall to forward HTTPS traffic to EX16EDGE.

Modify the Edge Subscription on EX10CH.

Remove the Edge Subscription on EX10CH and EX10EDGE.

Create an Edge Subscription between EX16EDGE and EX16MBX.

Configure the perimeter firewall to forward SMTP traffic to EX16EDGE.

Create an Edge Subscription between EX10EDGE and EX16MBX.

Answer Area



Answer:

Explanation:

Actions

Configure the perimeter Firewall to forward HTTPS traffic to EX16EDGE.

Modify the Edge Subscription on EX10CH.

Remove the Edge Subscription on EX10CH and EX10EDGE.

Create an Edge Subscription between EX16EDGE and EX16MBX.

Configure the perimeter firewall to forward SMTP traffic to EX16EDGE.

Create an Edge Subscription between EX10EDGE and EX16MBX.



Answer Area

Create an Edge Subscription between EX10EDGE and EX16MBX.

Configure the perimeter firewall to forward SMTP traffic to EX16EDGE.

Remove the Edge Subscription on EX10CH and EX10EDGE.



NEW QUESTION 66

A company named Contoso, Ltd. has an Exchange Server 2016 organization that uses an SMTP domain named contoso.com.

Contoso merges with a company named Fabrikam, Inc. Fabrikam uses an SMTP domain named fabrikam.com.

In the Contoso organization, you create an accepted domain for fabrikam.com. You configure the MX records of fabrikam.com to point to the Exchange servers of the Contoso organization. You configure several users in the Contoso organization to have an email address that uses the fabrikam.com SMTP domain.

Users report that when they send email to the fabrikam.com domain, they receive a non-delivery report (NDR) when the recipient is from the Fabrikam organization.

You need to ensure that all of the users who have a fabrikam.com email address can receive email. What should you do? To answer, select the appropriate options in the answer area.

NOTE: Each correct selection is worth one point.

Answer Area

Object to create:

A remote domain

A Send connector

Setting to change on the accepted domain:

AddressBookEnabled to \$false

AddressBookEnabked to \$true

DomainType to ExternalRelay

DomainType to InternalRelay

Answer:

Explanation: References:
[https://technet.microsoft.com/en-us/library/jj657737\(v=exchg.150\).aspx](https://technet.microsoft.com/en-us/library/jj657737(v=exchg.150).aspx)

NEW QUESTION 68

You have an Exchange Server 2016 organization.
You need to create a resource record in DNS to support Autodiscover from the Internet. What type of resource record should you create?

- A. Host (A)
- B. Text (TXT)
- C. Pointer (PTR)
- D. Mail exchange (MX)

Answer: A

NEW QUESTION 70

You have an Exchange Server 2016 organization.
Three users named User1, User2, and User3 work in the marketing department. You need to configure security to meet the following requirements:

- User3 must be able to send messages as User1.
- User3 must be able to send messages on behalf of User2.
- User2 must only be allowed to edit the Calendar of User1.

Which cmdlets should you use? To answer, drag the appropriate cmdlets to the correct requirements. Each cmdlet may be used once, more than once, or not at all. You may need to drag the split bar between panes or scroll to view content.

Answer Area

Cmdlets

Add-AdPermission

Add-MailboxFolderPermission

Add-MailboxPermission

Set-Mailbox

User3 must be able to send messages as User1:

Cmdlet

User3 must be able to send messages on behalf of User2:

Cmdlet

User2 must only be allowed to edit the Calendar of User1:

Cmdlet

Answer:

Explanation:



NEW QUESTION 71

You have an Exchange Server 2016 organization. The organization contains a database availability group (DAG). You need to identify the number of transaction logs that are in replay queue. Which cmdlet should you use?

- A. Test-ServiceHealth
- B. Test-ReplicationHealth
- C. Get-DatabaseAvailabilityGroup
- D. Get-MailboxDatabaseCopyStatus

Answer: D

Explanation: References:

[https://technet.microsoft.com/en-us/library/bb691314\(v=exchg.160\).aspx?f=255&MSPPErr=-2147217396](https://technet.microsoft.com/en-us/library/bb691314(v=exchg.160).aspx?f=255&MSPPErr=-2147217396)

NEW QUESTION 73

You have an Exchange Server 2016 organization.

Some users access the mailbox on their mobile device by using Exchange ActiveSync.

You need to prevent the users from synchronizing more than one month of email or calendar data to their device.

Solutions: You deploy an Allow/Block/Quarantine policy.

Does this meet the goal?

- A. Yes
- B. No

Answer: B

Explanation:

The Allow/Block/Quarantine policy, or list, feature was designed to help IT organizations control which of the growing number of Exchange ActiveSync-enabled devices are allowed to connect to their Exchange Servers.

With this feature, organizations can choose which devices (or families of devices) can connect using Exchange ActiveSync (and conversely, which are blocked or quarantined).

References:

<https://blogs.technet.microsoft.com/exchange/2010/11/15/controlling-exchange-activesyncdevice-access-using-t>

NEW QUESTION 75

You manage an Exchange Server 2016 organization in an Active Directory forest that contains three sites. The sites are located in Chicago, Los Angeles, and New York.

A database availability group (DAG) named DAG1 contains eight mailbox servers in the Los Angeles site and eight mailbox servers in the New York site.

The servers run Windows Server 2012 R2. The Los Angeles and New York sites both have independent network access to the Chicago site.

You need to configure the environment to provide the organization with the best chance of surviving a service outage if a site or a WAN link fails.

Additionally, the New York site must be considered the primary data center and given preference for survival. Which two actions should you perform? Each correct answer presents part of the solution.

- A. Add an additional Exchange server to DAG1 and place it in the New York site.
- B. Place the cluster core resource group in the Chicago site.
- C. Place the file share witness in the Chicago site.
- D. Add an additional Exchange server to DAG1 and place it in the Chicago site.
- E. Place the cluster core resource group in the New York site.
- F. Place the file share witness in the New York site.

Answer: CE

Explanation: You should place the file share witness in the Chicago site. Placing the file share witness in Chicago would give both New York and Los Angeles an opportunity to maintain quorum in the event that the other were to become unavailable. You should place the cluster core resource group in the New York site. Placing the cluster core resource group in New York would give that site an advantage toward maintaining quorum if the network link between New York and Chicago were to go down due to the arbitration delay. All members of the cluster except for the member owning the cluster core resource group must wait for a period of time equal to the arbitration delay before attempting to lock the file share witness (six seconds by default). The site with the member that locks the file share witness will maintain quorum.

You should not place the file share witness in the New York site. A loss of the New York site would result in the cluster losing quorum across both sites and all databases dismounting.

You should not add an additional Exchange server to DAG1 and place it in the New York site. Adding an additional Exchange server to the DAG in New York is incorrect because the DAG is already at its maximum capacity of sixteen nodes.

You should not add an additional Exchange server to DAG1 and place it in the Chicago site. Adding an additional Exchange server to the DAG in Chicago is incorrect because the DAG is already at its maximum capacity of sixteen nodes.

You should not place the cluster core resource group in the Chicago site. The cluster core resource group cannot be placed in Chicago because there are no cluster members there, and you must place the file share witness there. The cluster core resource group cannot be owned by the file share witness server.

NEW QUESTION 77

How is the IBM Content Template Catalog delivered for installation?

- A. as an EXE file
- B. as a ZIP file of XML files
- C. as a Web Application Archive file
- D. as a Portal Application Archive file

Answer: D

Explanation: References: <https://greenhouse.lotus.com/plugins/plugincatalog.nsf/ass>

NEW QUESTION 79

You plan to deploy Exchange Server 2016 to a new server. The server will host 1,000 mailboxes. You need to identify whether the new server has the required disk throughput and speed.

Which two tools should you use? Each correct answer presents part of the solution.

NOTE: Each correct selection is worth one point.

- A. LoadGen
- B. the Exchange Server Best Practices Analyzer Tool
- C. Jetstress
- D. Isinteg
- E. the Exchange Server Role Requirements Calculator

Answer: AC

Explanation: To determine how many Exchange servers are required to manage user load, use the following capacity planning tools:

Microsoft Exchange Jetstress Microsoft Exchange Load Generator Note:

The Jetstress tool is designed to simulate Exchange I/O at the database level by interacting directly with the database technology of the Extensible Storage Engine (ESE), also known as Jet, that Exchange is built on.

Jetstress can be configured to test the maximum I/O throughput available to your disk subsystem within the required performance constraints of Exchange, or it can accept a desired profile of user count and I/Os per second per user and validate that the disk subsystem is capable of maintaining an acceptable level of performance with such a profile. Jetstress testing can be used to validate storage reliability and performance prior to the deployment of Exchange servers. You should run Jetstress if you are concerned about your storage subsystem performance or if you need to determine a system's I/O capacity.

The Load Generator (LoadGen) tool is designed to produce a simulated client workload against a test Exchange deployment. This workload can be used to evaluate how Exchange performs, and can also be used to analyze the effect of various configuration changes on Exchange behavior and performance while the system is under load

Use the output from these tests in the following ways: Validate deployments

Calculate the client computer response time for the server configuration under client load Estimate the number of users per server

Identify bottlenecks on the server

References: [https://technet.microsoft.com/en-us/library/dd335108\(v=exchg.141\).aspx](https://technet.microsoft.com/en-us/library/dd335108(v=exchg.141).aspx)

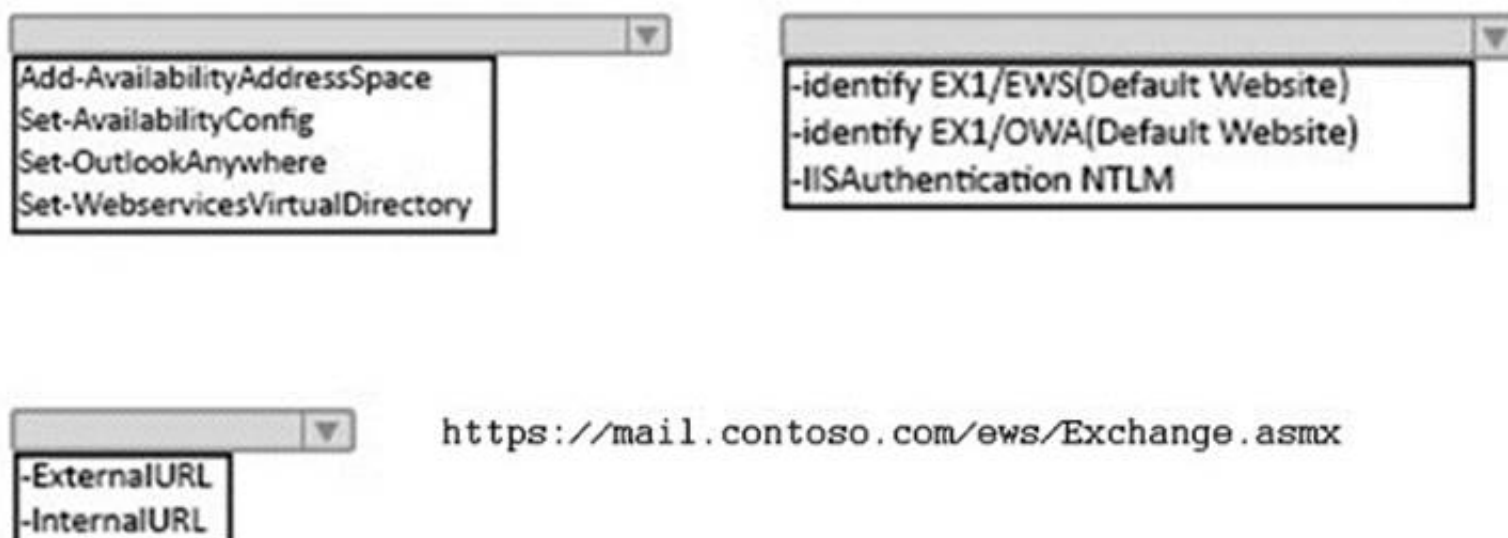
NEW QUESTION 84

You have an Exchange Server 2016 organization and a Microsoft Office 365 subscription configured in a hybrid deployment. The deployment contains 500 user mailboxes.

Users who have mailboxes in Office 365 report that they cannot view the availability information of users who have mailboxes in Exchange Server 2016.

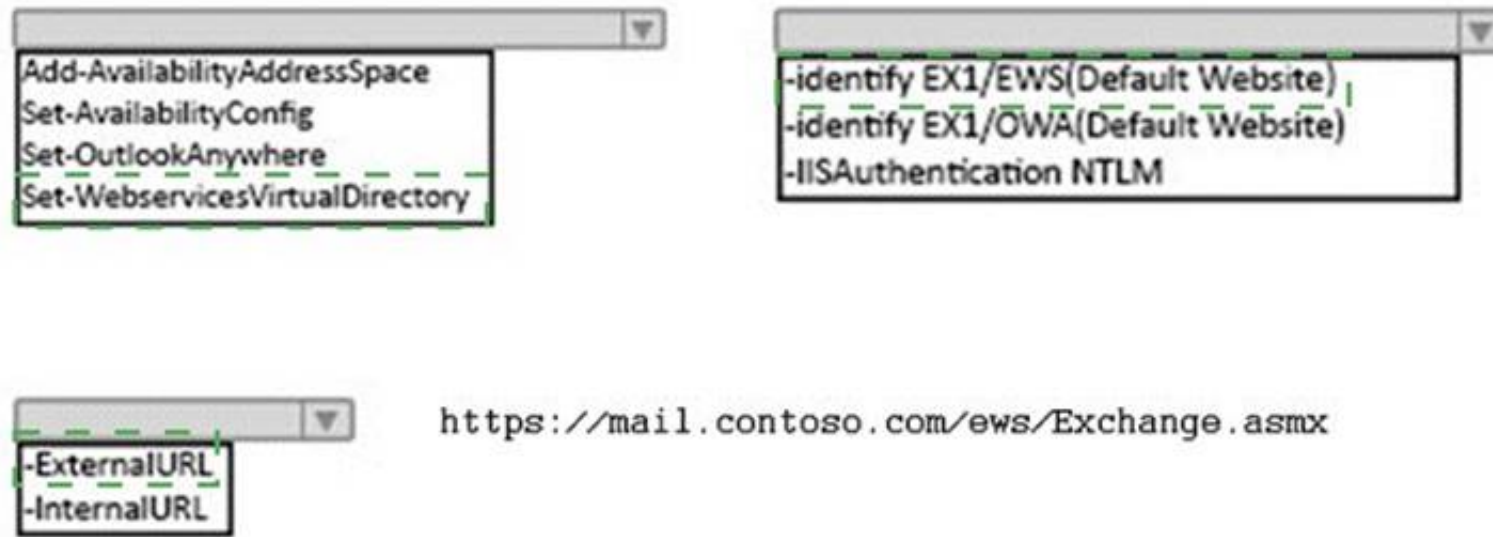
You need to ensure that the users hosted in Office 365 can view the availability information of the mailboxes hosted in on-premises Exchange Server.

Which command should you run on an Exchange Server? To answer, select the appropriate options in the answer area.



Answer:

Explanation:



NEW QUESTION 85

You have an Exchange Server 2016 organization.

The organization contains a mailbox database named DB1. DB1 is stored on a volume named Volume1. You plan to use Exchange Native Data protection.

You need to recommend a solution to prevent Volume1 from running out of space for transaction logs. What should you recommend?

- A. an event history retention period
- B. background database maintenance
- C. circular logging
- D. a size limit of the log directory for the managed folders

Answer: C

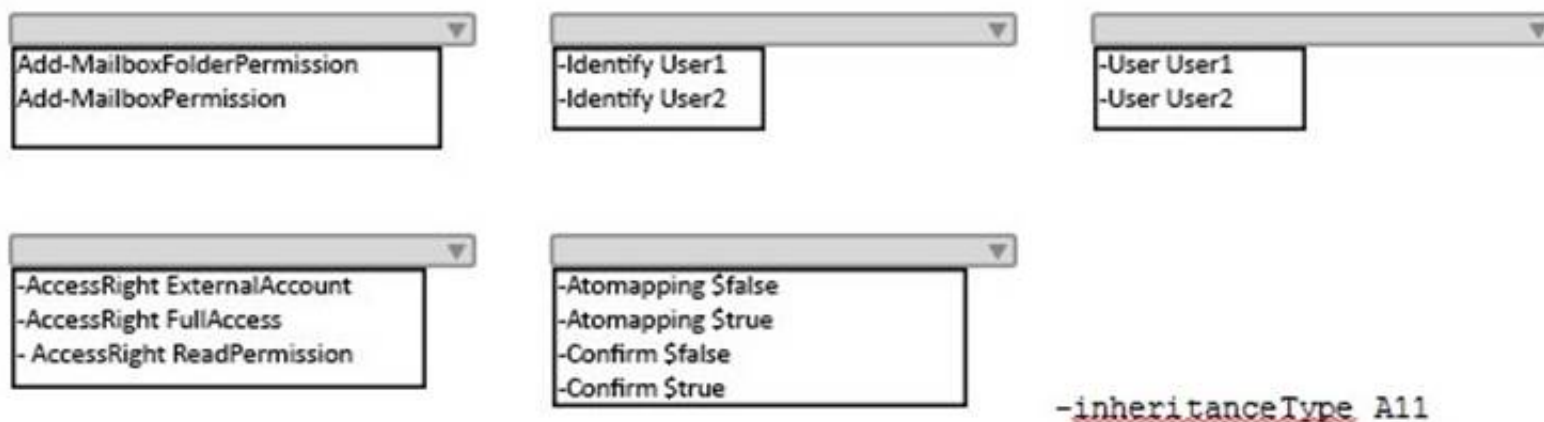
NEW QUESTION 90

Your company has an Exchange Server 2016 organization.

You plan to allow several users to access the mailboxes of the other group.

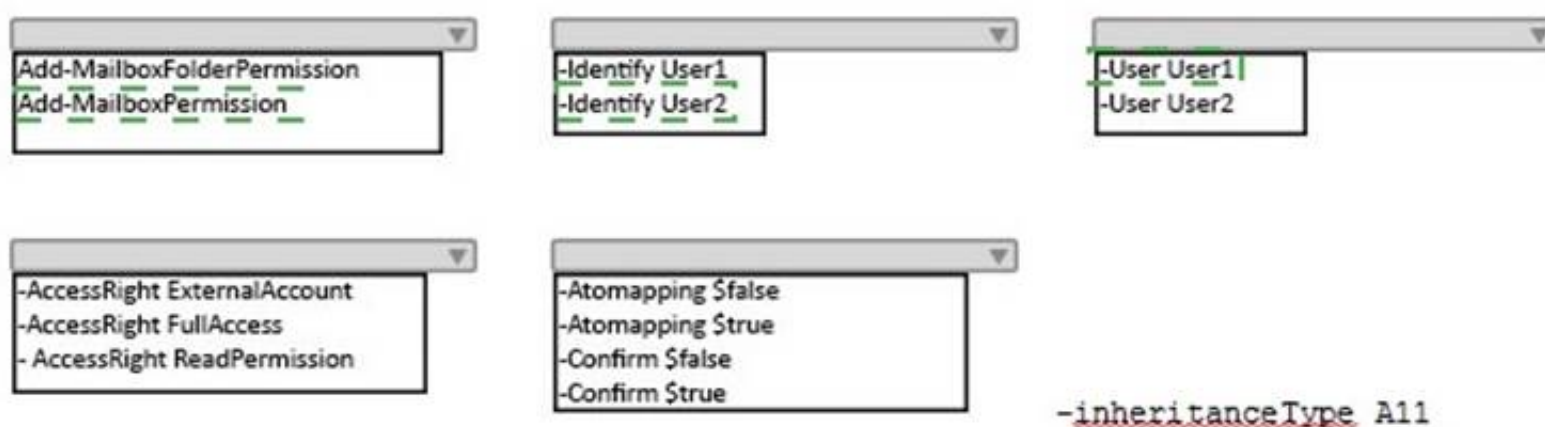
You need to ensure that a user named User1 can read and delete the email messages in the mailbox of a user named User2. User1 must add the mailbox of User2 manually to the Microsoft Outlook profile.

What command should you run? To answer, select the appropriate options in the answer area.



Answer:

Explanation:



NEW QUESTION 93

You have an Exchange Server 2016 organization. The organization contains 10 mailbox databases. You have a mailbox database named DB4 on a disk that has only 10 percent free disk space. You need to prevent automatic mailbox distribution from selecting DB4 as a target.

Which cmdlet should you use?

- A. Set-MailBoxDatabase
- B. Set-MailboxServer
- C. Set-SiteMailboxProvisioningPolicy
- D. Set-DatabaseAvailabilityGroup

Answer: A

Explanation: References:
[https://technet.microsoft.com/en-gb/library/ff477621\(v=exchg.150\).aspx#Exclude](https://technet.microsoft.com/en-gb/library/ff477621(v=exchg.150).aspx#Exclude)

NEW QUESTION 94

You have an Exchange Server 2016 organization. The organization contains an Edge transport server. Users report that a message with the following anti-spam headers is delivered to their Inbox folder in Microsoft Outlook.
X-MS-Exchange-Organization-PCL : 7 X-MS-Exchange-Organization-SCL : 6
X-MS-Exchange-Organization-Antispam-Report : DV : 3.1.3924.1409; SID : SenderIDStatus Fail; PCL: PhishingLevel SUSPICIOUS; CW: CustomList; PP: Presolved; TIME: TimeBasedFeatures
You need to prevent similar messages from being delivered. The solution must generate a non-delivery report (NDR) when the messages are prevented from being delivered to all user mailboxes.
What should you do?

- A. Set the SCL reject threshold to 5.
- B. Run the Set-SenderIdConfig cmdlet.
- C. Set the SCL delete threshold to 7.
- D. Run the Set-TransportConfig cmdlet.

Answer: A

NEW QUESTION 95

You have two servers named EX1 and EX2.
You plan to add both servers to a database availability group (DAG) named DAG1. Each server will host a copy of a mailbox database.
You calculate that during the lifespan of the servers, the mailbox databases will grow up to 4 TB. The logs will occupy up to 1TB at any given time.

Server name	Disk name	Size	Contents
EX1	C	1 TB	Operating system
	D	2 TB	Empty
	E	5 TB	Empty
EX2	C	1 TB	Operating system
	D	1 TB	Empty
	E	4 TB	Empty
	F	1 TB	Empty
	G	5 TB	Empty

You need to identify which drivers must be used to store the database and log files on the servers.

EX1:

Drive C to store the log files and drive E to store the database files

Drive D to store the log files and drive E to store the database files

Drive E to store the log files and the database files

EX2:

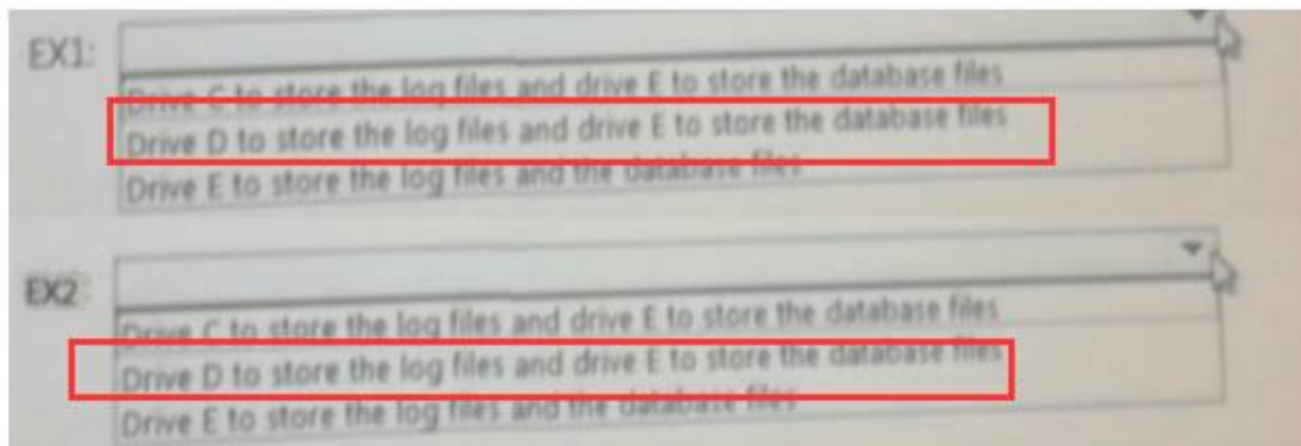
Drive C to store the log files and drive E to store the database files

Drive D to store the log files and drive E to store the database files

Drive E to store the log files and the database files

Answer:

Explanation:

**NEW QUESTION 98**

You have an Exchange Server 2016 organization.

All users work from a main office and use Microsoft Outlook 2016.

You recently ran the Microsoft Office 365 Hybrid Configuration Wizard and moved most of the user mailboxes to Exchange Online.

A network administrator reports an increase in the amount of outbound SMTP traffic from the network. You need to reduce the amount of bandwidth utilization for the outbound SMTP traffic.

What should you do?

- A. From the Exchange Server organization, create a Receive connector that uses the IP address of Exchange Online as a remote range.
- B. From the public DNS zone, modify the MX record to point to Exchange Online.
- C. From the public DNS zone, modify the SRV record to point to Exchange Online.
- D. From the Exchange Server organization, create a Send connector that uses Exchange Online as an SMTP smart host.

Answer: B

NEW QUESTION 101

You have an Exchange Server 2016 organization. The organization contains servers that have either Exchange Server 2010 or Exchange Server 2016 installed.

You are migrating several thousands of mailboxes from an Exchange Server 2010 server named EX01 to an Exchange Server 2016 server named EX02. EX01 contains a single mailbox database.

You discover that only 20 mailboxes move concurrently.

You need to increase the number of mailboxes that move concurrently. What should you do?

- A. Run the Set-MoveRequest cmdlet
- B. Edit the MsExchangeMailboxReplicatioan.exe.config file
- C. Edit the MSExchangeMigrationWorkflow.exe.config file.
- D. Run the Set-MigrationBatch cmdlet

Answer: B

NEW QUESTION 105

You have an Exchange Server 2016 organization that contains multiple Hub Transport servers. You need to recommend a message hygiene solution to meet the following requirements:

- Block servers that are known to send spam
- Minimize administrative effort

What should you recommend?

- A. an IP Block list
- B. IP Block list providers
- C. recipient filtering
- D. sender filtering

Answer: B

NEW QUESTION 109

You manage an Exchange Server 2016 organization that spans two sites. The sites are located in Los Angeles and New York.

You have a database availability group (DAG) named DAG1 that contains four members, two in each site. The names and location of each DAG1 member are as follows:

EX01 and EX02 are in the New York site. EX03 and EX04 are in the Los Angeles site.

A user has a mailbox on a database that is currently active on EX03.

The Front End Transport service on EX01 receives a message from the Internet. The message is addressed only to the user.

Based on this information, how will the Front End Transport service always attempt to route the first delivery attempt of the message?

- A. The Transport service on EX01
- B. The Transport service on EX03
- C. The Transport service on one of the servers in the New York site
- D. The Transport service on one of the servers in the Los Angeles site

Answer: B

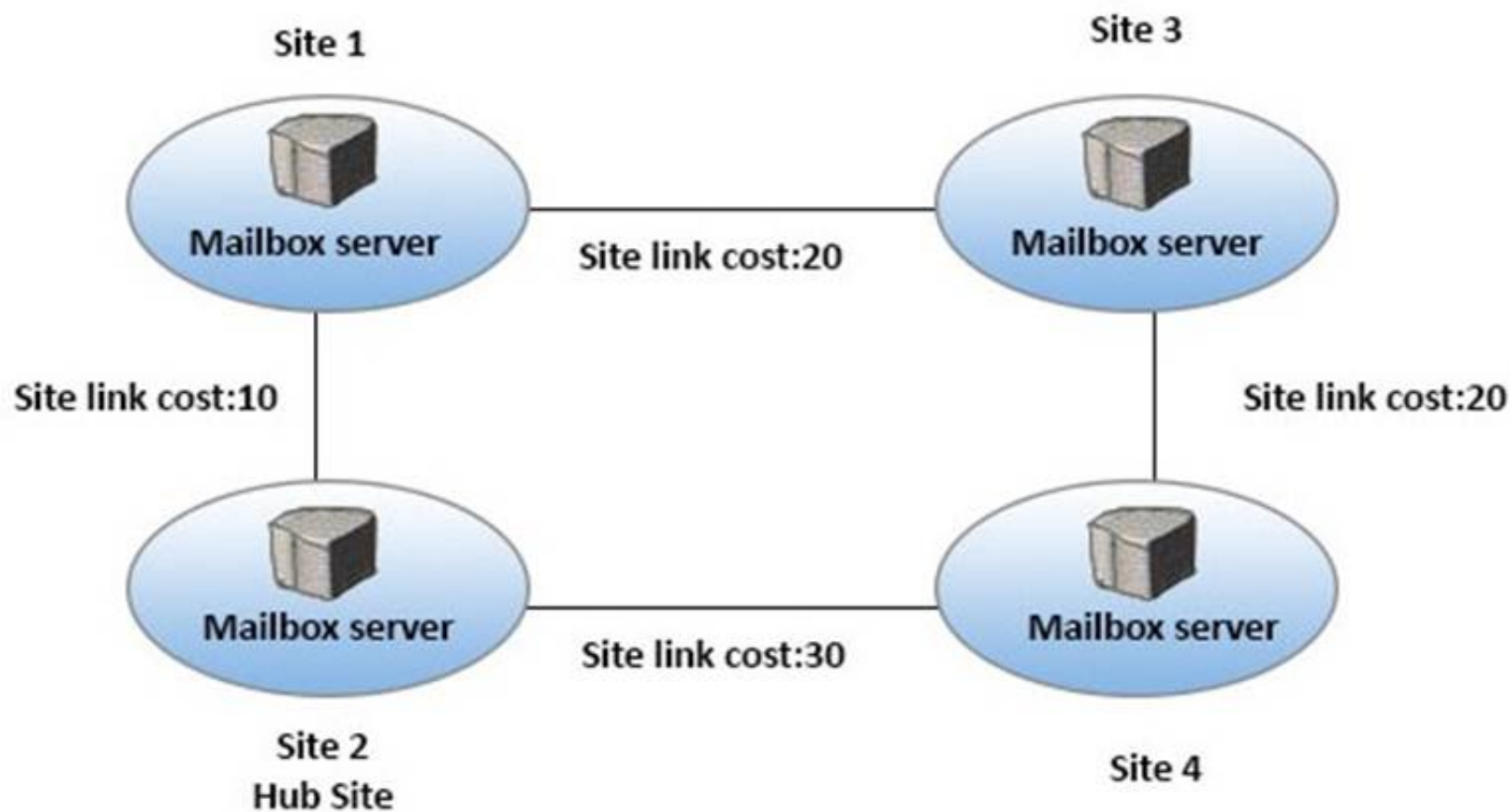
Explanation: The Front End Transport service will always attempt to route the first delivery attempt of the message to the Transport service on one of the servers in the New York site. For incoming messages with a single mailbox recipient, the Front End Transport (FET) service will select a mailbox server in the target delivery group, and give a higher priority to whichever mailbox server has the closest proximity based on the Active Directory site topology. In this scenario, the target delivery group is a routable DAG, and the Active Directory site with the closest proximity to the FET instance on EX01 is the Transport Service on EX01 or EX02 in New York.

The Front End Transport service will not always attempt to route the first delivery attempt of the message to the Transport service on EX01. While the Transport service on EX01 is a possibility, there is no guarantee that it will be the target of the first delivery attempt from the FET service. All servers in the New York site are equal candidates for being targeted.

The Front End Transport service will not always attempt to route the first delivery attempt of the message to the Transport service on EX03. EX03, as well as any server in the Los Angeles site, would not be targets of the first delivery attempt from the FET service on EX01 because they are not within the closest proximity. The Front End Transport service will not always attempt to route the first delivery attempt of the message to the Transport service on one of the servers in the Los Angeles site because they are not within the closest proximity, based on the Active Directory topology.

NEW QUESTION 112

You have an Exchange Server 2016 organization. The Active directory sites are configured as shown in the following graphic.



Use the drop-down menus to select the answer choice that completes each statement based on the information presented in the graphic

A message that leaves Site 1 to a destination mailbox in Site 4 will be received next at [answer choice].

▼

Site 2
Site 3
Site 4

A message that leaves Site 3 to a destination mailbox in Site 2 will be received next at [answer choice].

▼

Site 1
Site 2
Site 4

Answer:

Explanation:

A message that leaves Site 1 to a destination mailbox in Site 4 will be received next at [answer choice].

▼

Site 2
Site 3
Site 4

A message that leaves Site 3 to a destination mailbox in Site 2 will be received next at [answer choice].

▼

Site 1
Site 2
Site 4

NEW QUESTION 115

You need to recommend an NLB configuration that meets the availability requirements and the security requirements. Which load balancing solution should you recommend?

- A. Layer 7 load balancing with session affinity
- B. Layer 4 load balancing without session affinity
- C. Layer 4 load balancing with session affinity
- D. Layer 7 load balancing without session affinity

Answer: A

NEW QUESTION 116

You have an Exchange Server 2016 organization.

Users connect to their mailbox by using Microsoft Outlook 2013 and mobile devices. A user named User1 loses a mobile device.

You need to wipe the mobile device remotely. Which cmdlet should you use?

- A. Remove-MobileDevice
- B. Clear-MobileDevice
- C. Set-Mailbox
- D. Remove-ActiveSyncDevice

Answer: B

Explanation: References:

<https://docs.microsoft.com/en-us/powershell/module/exchange/devices/clear-mobiledevice?view=exchange-ps>

NEW QUESTION 121

You have an Exchange Server 2016 organization. You configure the organization for site resilience.

You have two Exchange servers named exch1.adatum.com and exch2.adatum.com. Each server is in a different data center. The certificates on both servers have a subject name of mail.adatum.com.

Outlook Anywhere is configured to use the fully qualified domain name (FQDN) of the server in the local data center.

You need to ensure that Outlook Anywhere remains connected after a database, server, or data center switchover.

Which command should you run?

- A. Set-OutlookProvider EXPR -CertPrincipalName msstd: ".adatum.com"
- B. Set-OutlookProvider -Identity msExchAutoDiscoverConfig -TTL 2
- C. Set-OutlookProvider -OutlookProviderFlags ExternalClientsRequireSSL
- D. Set-OutlookProvider EXPR -CertPrincipalName "msstd:mail.adatum.com"

Answer: A

Explanation: References: [https://technet.microsoft.com/en-us/library/dd638104\(v=exchg.160\).aspx](https://technet.microsoft.com/en-us/library/dd638104(v=exchg.160).aspx)

NEW QUESTION 122

Your company has three offices. The offices are located in New York, London and Sydney. The offices connect to each other by using a WAN link. Each office connects directly to the Internet.

The company has an Exchange Server organization. The organization contains six mailbox servers. The servers are configured as shown in the following table.

Server name	Office	Active Directory site	Database Availability group
EX1	New York	Site1	DAG1
EX2	New York	Site1	DAG1
EX3	London	Site2	DAG1
EX4	London	Site2	DAG1
EX5	Sydney	Site3	DAG1
EX6	Sydney	Site3	DAG1

Each office is configured to use a different Send connector to send email messages to the Internet.

You need to ensure that the servers route email messages that have Internet recipients through their respective site only.

What should you modify?

- A. the permissions of each Send connector
- B. the settings of the site links
- C. the cost of each Send connector
- D. the scope of each Send connector

Answer: D

Explanation: References:

[https://msdn.microsoft.com/en-us/library/aa998662\(v=exchg.160\).aspx?f=255&MSPPErr=-2147217396](https://msdn.microsoft.com/en-us/library/aa998662(v=exchg.160).aspx?f=255&MSPPErr=-2147217396)

NEW QUESTION 124

You have an Exchange Server 2016 organization.

The organization contains three Mailbox servers named EX01, EX02, and EX03. The servers are members of a database availability group (DAG).

You have a mailbox database named DB01. DB01 is replicated to EX01 and EX02.

You need to add a replica of DB01 to EX03. The replica must meet the following requirements:

- Transaction log files must not be applied to the replica for seven days after they are generated.

- Transaction log files must be preserved for one day after they are applied to the database copy.
What command should you run? To answer, select the appropriate options in the answer area.

Answer Area

<div>▼</div> <div>Add-MailboxDatabaseCopy</div> <div>New-MailboxDatabase</div> <div>Set-DatabaseAvailabilityGroup</div>	<div>▼</div> <div>-Identity DB01</div> <div>-Identity EX01\DB01</div> <div>-Identity EX03\DB01</div>	<div>▼</div> <div>-MailboxServer EX03</div> <div>-MailboxServer EX03\DB01</div> <div>-SourceServer EX01</div>
<div>▼</div> <div>-ReplayLagTime 01.00:00:00</div> <div>-ReplayLagTime 07.00:00:00</div>	<div>▼</div> <div>-TruncationLagTime 01.00:00:00</div> <div>-TruncationLagTime 07.00:00:00</div>	-ActivationPreference 3

Answer:

Explanation: Answer Area

<div>▼</div> <div>Add-MailboxDatabaseCopy</div> <div>New-MailboxDatabase</div> <div>Set-DatabaseAvailabilityGroup</div>	<div>▼</div> <div>-Identity DB01</div> <div>-Identity EX01\DB01</div> <div>-Identity EX03\DB01</div>	<div>▼</div> <div>-MailboxServer EX03</div> <div>-MailboxServer EX03\DB01</div> <div>-SourceServer EX01</div>
<div>▼</div> <div>-ReplayLagTime 01.00:00:00</div> <div>-ReplayLagTime 07.00:00:00</div>	<div>▼</div> <div>-TruncationLagTime 01.00:00:00</div> <div>-TruncationLagTime 07.00:00:00</div>	-ActivationPreference 3

NEW QUESTION 129

You have an Exchange Server 2016 organization.

You run the Microsoft Office 365 Hybrid Configuration Wizard and you move all the mailboxes to Exchange Online.

You need to ensure that all of the email services remain available after you remove the Exchange Server 2016 servers from the organization.

Which DNS records should you modify? To answer, drag the appropriate record types to the correct DNS zones. Each record type may be used once, more than once, or not at all. You may need to drag the split bar between panes or scroll to view content.

Record Types

Answer Area

Autodiscover	Record to modify in the internal DNS zone:	Record Type
MX	Record to modify in the public DNS zone:	Record Type
NX		
SRV		Record Type

Answer:

Explanation:

Record Types		Answer Area
Autodiscover	Record to modify in the internal DNS zone:	Autodiscover
MX	Record to modify in the public DNS zone:	Autodiscover
NX		
SRV		MX

NEW QUESTION 131

You have an exchange server 2016 organization. The organization contains a Mailbox server named EX01. EX01 contains a mailbox database named DB01. The volume that contains DB01 fails. You need to perform a dial-tone recovery of the database. What should you create first?

- A. a new Recovery Storage Group
- B. a new mailbox database
- C. a mailbox move request
- D. a mailbox restore request
- E. a lagged database copy

Answer: B

NEW QUESTION 133

You deploy an Exchange Server 2016 organization. You create a data loss prevention (DLP) rule package. You need to import the rule package. Which cmdlet should you use?

- A. New-DlpPolicy
- B. New-MessageClassification
- C. New-DataClassification
- D. New-ClassificationRuleCollection

Answer: D

NEW QUESTION 137

You have an Exchange Server 2016 organization. The organization contains 2,000 mailboxes. You need to provide administrators with the ability to perform the following tasks:

An administrator named Admin1 must be able to create custom message classifications.

An administrator named Admin2 must be able to create retention tags.

Which management role group should you assign to each administrator? To answer, drag the appropriate role groups to the correct administrators. Each role group may be used once, more than once, or not at all. You may need to drag the split bar between panes or scroll to view content.

Role Groups		Answer Area
Compliance Management	Admin1	Role group
Discovery Management	Admin2	Role group
Recipient Management		
Records Management		

Answer:

Explanation:

Role Groups

Compliance Management

Discovery Management

Recipient Management

Records Management

Answer Area

Admin1

Records Management

Admin2

Records Management

NEW QUESTION 141

You have an Exchange Server 2016 organization. The organization contains 5,000 mailboxes. All of the users in the organization share their Calendar with the users in two domains named contoso.com and fabrikam.com. You need to prevent the organization users from sharing their Calendar with the users in the contoso.com domain. What command should you run? To answer, select the appropriate options in the answer area.

Answer Area

▼

identity "Default Sharing Policy (DEFAULT)"

▼

Set-CasMailbox

Set-Mailbox

Set-SharingPolicy

-domains contoso.com: CalendarSharingFreeBusySimple

-domains fabrikam.com: CalendarSharingFreeBusySimple

Answer:

Explanation: Answer Area

▼

identity "Default Sharing Policy (DEFAULT)"

▼

Set-CasMailbox

Set-Mailbox

Set-SharingPolicy

-domains contoso.com: CalendarSharingFreeBusySimple

-domains fabrikam.com: CalendarSharingFreeBusySimple

NEW QUESTION 145

You deploy a server named ex01.contoso.com that has Exchange Server 2016 installed. You need to ensure that when users connect to the URL of http://ex01.contoso.com, they access Outlook on the web over a secure connection. How should you configure the Default Web Site? To answer, select appropriate options in the selected area.

Redirect requests to:

▼

http://ex01.contoso.com

http://ex01.contoso.com/owa

https://ex01.contoso.com

https://ex01.contoso.com/owa

Require SSL:

▼

Disable

Enable

Answer:

Explanation:

Redirect requests to:

http://ex01.contoso.com
http://ex01.contoso.com/owa
https://ex01.contoso.com
https://ex01.contoso.com/owa

Require SSL:

Disable
Enable

NEW QUESTION 149

You have an Exchange Server 2016 organization.

Some users access the mailbox on their mobile device by using Exchange ActiveSync.

You need to prevent the users from synchronizing more than one month of email or calendar data to their device.

Solution: You deploy a mobile device mailbox policy. Does this meet the goal?

- A. Yes
- B. No

Answer: B

Explanation:

You can use mobile device mailbox policies to manage many different settings. These include the following: Require a password

Specify the minimum password length

Require a number or special character in the password

Designate how long a device can be inactive before requiring the user to re-enter a password Wipe a device after a specific number of failed password attempts

References: [https://technet.microsoft.com/en-us/library/bb123783\(v=exchg.160\).aspx](https://technet.microsoft.com/en-us/library/bb123783(v=exchg.160).aspx)

NEW QUESTION 153

You have an Active Directory forest named contoso.com that contains an Exchange Server 2016 organization named Contoso.

Contoso.com has a two-way forest trust with an Active Directory forest named fabrikam.com. The fabrikam.com forest contains an Exchange Server 2016 organization named Fabrikam.

You need to ensure that the users in Contoso can access the free/busy information of all the users in Fabrikam. An administrator from Fabrikam runs the following command in the organization.

Get-MailboxServer | Add-ADPermission -Accessrights Extendedright -Extendedrights "ms-ExchEPI-Token-Serialization" -User "CONTOSO\Exchange Servers"

What command should you run in Contoso? To answer, select the appropriate options in the answer area.

Answer Area

Add-AvailabilityAddressSpace
Set-AvailabilityConfig

-EforestName Contoso.com
-ForestName Fabrikam.com

-AccessMethod OrgWideFB

-UseServiceAccount \$false
-UseServiceAccount \$true

Answer:

Explanation:

Answer Area

Add-AvailabilityAddressSpace
Set-AvailabilityConfig

-AccessMethod OrgWideFB

ForestName Contoso.com
-ForestName Fabrikam.com

UseServiceAccount \$false
-UseServiceAccount \$true

NEW QUESTION 154

You are planning an Exchange Server 2016 organization. The organization will contain a Mailbox server named EX01. Users will have primary SMTP email addresses in the following domains:

- Contoso.com
- Fabrikam.com
- Cohowinery.com
- Wingtiptoys.com

You need to add a DNS record to provide Autodiscover for each domain. Which type of record should you create in each zone?

- A. SRV
- B. CERT
- C. MINFO
- D. PTR

Answer: A

NEW QUESTION 155

You have an Exchange Server 2016 organization.

Some users connect to their mailbox by using Microsoft Outlook 2016 for Mac. You verify that the Outlook 2016 users can connect successfully to their mailbox.

You suspect a configuration error on a virtual directory.

You need to identify which virtual directory is the most likely cause of the issue. Which virtual directory should you identify?

- A. Rpc
- B. RpcWithCert
- C. mapi
- D. EWS

Answer: D

NEW QUESTION 158

You have an Exchange Server 2016 organization and Microsoft Office 365 subscription configured in a hybrid deployment.

You need to ensure that any email messages sent to the contoso.com domain are encrypted by using Office 365 Message Encryption.

Which three commands should you use? Each correct answer presents part of the solution.

- A. New-MessageClassification
- B. New-TransportRule
- C. Set-IRMConfiguration
- D. New-OutlookProtectionRule
- E. Import-RMSTrustedPublishingDomain

Answer: BCE

NEW QUESTION 162

You have an Exchange Server 2016 organization. The organization contains three Mailbox servers. The servers are configured as shown in the following table

Server Name	Active Directory site
EX01	Site1
EX02	Site2
EX03	Site3

You have distribution group named Group1. Group1 contains three members. The members are configured as shown in the following table.

User Name	Mailbox server
User1	EX01
User2	EX02
User3	EX03

You discover that when User1 sends email messages to Group1, all of the messages are delivered to EX02 first. You need to identify why the email messages sent to Group1 are sent to EX02 instead. What should you identify?

- A. EX02 is configured as an expansion server.
- B. The arbitration mailbox is hosted on EX02.
- C. Site2 has universal group membership caching enabled.
- D. Site2 is configured as a hub site.

Answer: A

Explanation: References: [https://technet.microsoft.com/en-us/library/aa998825\(v=exchg.150\).aspx](https://technet.microsoft.com/en-us/library/aa998825(v=exchg.150).aspx)

NEW QUESTION 166

You have an Exchange Server 2016 organization. The organization contains two Mailbox servers. You have a database that is replicated to both servers. The database contains 500 mailboxes. You add new volumes to the Mailbox servers. You need to move all of the mailbox data to the new volumes. The solution must meet the following requirements: Ensure that multiple copies of the mailbox data are available at all times. Minimize downtime for the mailbox users. Which three actions should you perform in sequence? To answer, move the appropriate actions from the list of actions to the answer area and arrange them in the correct order.

Actions

- Remove all of the replicated database copies.
- Create a new database.
- Dismount the replicas of the database.
- Move the database.
- Mount the new database.
- Move the mailboxes.
- Mount the replicas of the database
- Create replicated database copies.

➤

➤

Answer Area

⬅

⬅

Answer:

Explanation:

Actions

- Remove all of the replicated database copies.
- Create a new database.
- Dismount the replicas of the database.
- Move the database.
- Mount the new database.
- Move the mailboxes.
- Mount the replicas of the database
- Create replicated database copies.

➤

➤

Answer Area

Remove all of the replicated database copies.

Move the database.

Create replicated database copies.

⬅

⬅

NEW QUESTION 170

Your network contains a single Active Directory forest. The forest contains two sites named Site1 and Site2. You have an Exchange Server 2016 organization. The organization contains two servers in each site. You have a database availability group (DAG) that spans both sites. The file share witness is in Site1.

If a power failure occurs at Site1, you plan to mount the databases in Site2.

When the power is restored in Site1, you need to prevent the databases from mounting in Site1.

What should you do?

- A. Disable AutoReseed for the DAG.
- B. Implement an alternate file share witness.
- C. Configure Datacenter Activation Coordination (DAC) mode.
- D. Force a rediscovery of the network when the power is restored.

Answer: C

Explanation: References: [https://technet.microsoft.com/en-us/library/dd979790\(v=exchg.150\).aspx](https://technet.microsoft.com/en-us/library/dd979790(v=exchg.150).aspx)

NEW QUESTION 174

You work for a company named Litware, Inc. that hosts all email in Exchange Online.

A user named User1 sends an email message to an external user User 1 discovers that the email message is delayed for two hours before being delivered.

The external user sends you the message header of the delayed message

You need to identify which host in the message path is responsible for the delivery delay. What should you do?

- A. Review the contents of the protocol logs.
- B. Search the message tracking logs.
- C. Search the delivery reports for the message
- D. Review the contents of the application log
- E. Input the message header to the Exchange Remote Connectivity Analyzer

Answer: E

NEW QUESTION 175

You have an Exchange Server 2016 organization.

The organization has two Mailbox servers named EX01 and EX02.

Both servers are members of a database availability group (DAG) named DAG01. A mailbox database named DB01 is replicated to EX01 and EX02.

You plan to move the database file and the transaction logs of DB01 to a new location.

You create a new folder structure on EX01 and EX02 to store the DB01 database file and transaction logs. You need to complete the move.

The solution must minimize the amount of network traffic between EX01 and EX02. You dismount DB01.

Which five actions should you perform in sequence? To answer, move the appropriate actions from the list of actions to the answer area and arrange them in the correct order.

NOTE: More than one order of answer choices is correct. You will receive credit for any of the correct orders you select.

Actions	Answer Area
Add a copy of DB01 to EX02.	
Mount DB01.	
Run the Move-ActiveMailboxDatabase cmdlet on EX01.	
Run the Move-DatabasePath cmdlet on EX01.	
Run the Set-MailboxDatabase cmdlet on EX01.	
Move the database file and the transaction logs on EX02.	
Remove the copy of DB01 from EX02.	
Run the eseutil.exe command on EX01.	

➤

➤

⬅

⬅

⬆

⬆

Answer:

Explanation:

Actions	Answer Area
Add a copy of DB01 to EX02.	Run the Set-MailboxDatabase cmdlet on EX01.
Mount DB01.	Remove the copy of DB01 from EX02.
Run the Move-ActiveMailboxDatabase cmdlet on EX01.	Move the database file and the transaction logs on EX02.
Run the Move-DatabasePath cmdlet on EX01.	Run the Move-DatabasePath cmdlet on EX01.
Run the Set-MailboxDatabase cmdlet on EX01.	Add a copy of DB01 to EX02.
Move the database file and the transaction logs on EX02.	
Remove the copy of DB01 from EX02.	
Run the eseutil.exe command on EX01.	

NEW QUESTION 176

Your company recently deployed Exchange Server 2016.

Users use a variety of mobile devices to access their mailbox, including iPhones and iPads.

You need to configure security for the users who connect to the corporate network by using their mobile device.

The solution must meet the following requirements:

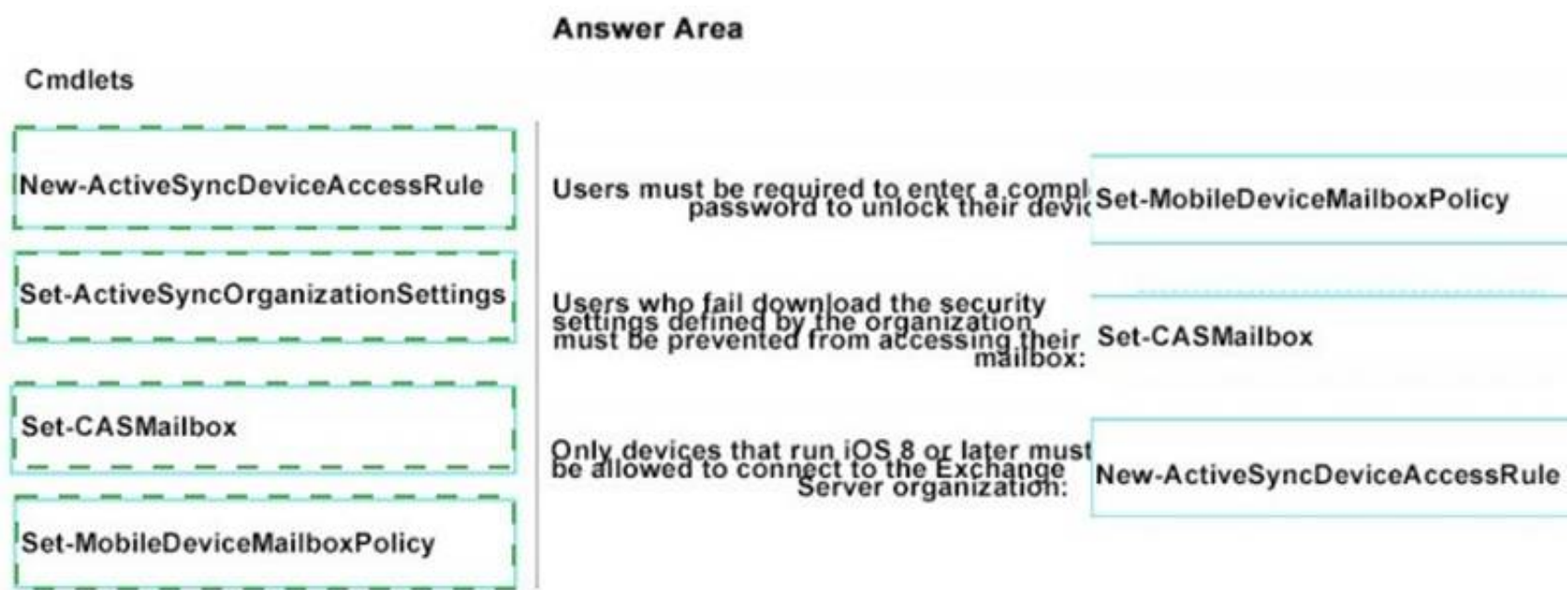
- Users must be required to enter a complex password to unlock their device.
- Only devices that run iOS 8 or later must be allowed to connect to the Exchange Server organization.
- Users who fail to download the security settings defined by the organization must be prevented from accessing their mailbox.

Which cmdlet should you use for each requirement? To answer, drag the appropriate cmdlets to the correct requirements. Each cmdlet may be used once, more than once, or not at all. You may need to drag the split bar between panes or scroll to view content.

Cmdlets	Requirements	Answer Area
New-ActiveSyncDeviceAccessRule	Users must be required to enter a complex password to unlock their device:	Cmdlet
Set-ActiveSyncOrganizationSettings	Users who fail download the security settings defined by the organization must be prevented from accessing their mailbox:	Cmdlet
Set-CASMailbox	Only devices that run iOS 8 or later must be allowed to connect to the Exchange Server organization:	Cmdlet
Set-MobileDeviceMailboxPolicy		

Answer:

Explanation:



NEW QUESTION 181

You remove the namespaces for the branch offices.

The branch office users report that they fail to connect to their mailbox by using Exchange ActiveSync from their mobile device.

You need to ensure that all of the users can access their mailbox by using Exchange ActiveSync. What should you do?

- A. Instruct the users to recreate the Exchange ActiveSync partnership on their device.
- B. Create a new device access rule.
- C. Run the Set-MobileDeviceMailboxPolicy cmdlet.
- D. Run the Set-ActiveSyncOrganizationSettings cmdlet.

Answer: C

Explanation:

In Exchange 2016, you can create mobile device mailbox policies to apply a common set of policies or security settings to a collection of users. After you deploy Exchange ActiveSync in your Exchange 2016 organization, you can create new mobile device mailbox policies or modify existing policies.

Use the Set-MobileDeviceMailboxPolicy cmdlet to modify mobile device mailbox policies.

NEW QUESTION 184

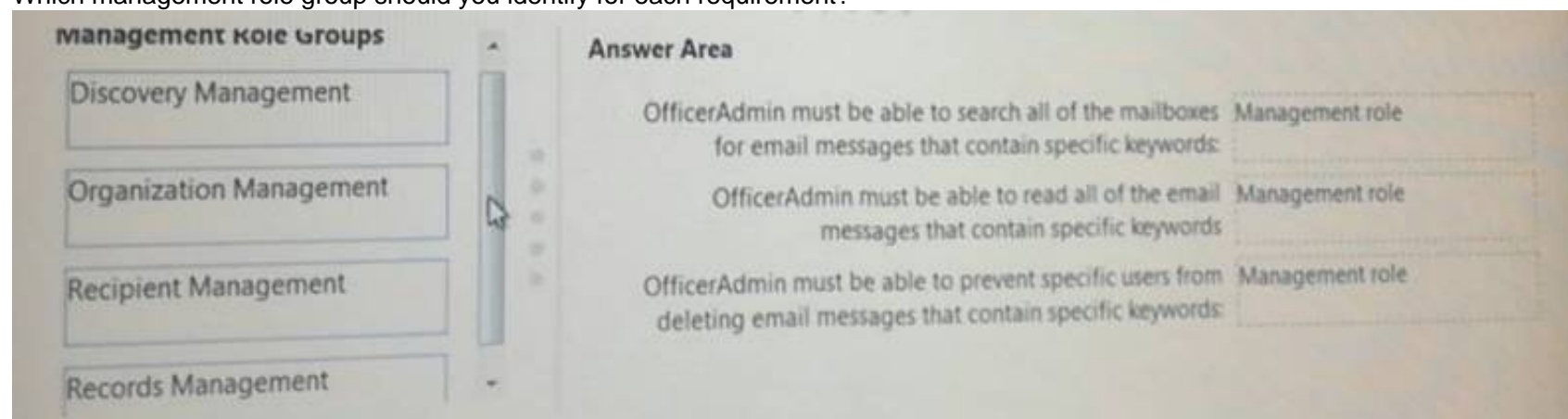
Your company has an Exchange Server 2016 Organization. The Organization contains three servers and 2000 mailboxes.

The company's compliance policy has the following requirements:

- * A compliance officer named OfficerAdmin must be able to search all of the mailboxes for email messages that contain specific Keywords.
- * OfficerAdmin must be able to read all of the email messages that contains specific keywords.
- * OfficerAdmin must be able to prevent specific users from deleting email messages that contain specific keywords.

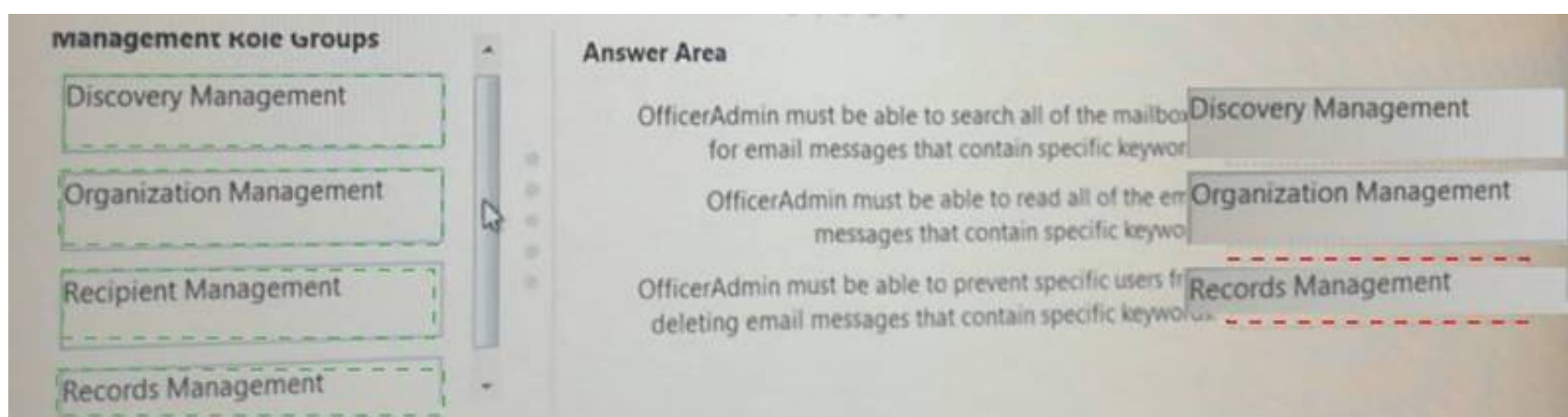
You need to identify which management roles must be assigned to OfficerAdmin to meet the requirements.

Which management role group should you identify for each requirement?



Answer:

Explanation:



NEW QUESTION 186

You have an Exchange Server 2016 organization. The organization contains two Mailbox servers. You have a database that is replicated to both servers. The database contains 500 mailboxes. You add new volumes to the Mailbox servers.

You need to move all of the mailbox data to the new volumes. The solution must meet the following requirements:

- Ensure that multiple copies of the mailbox data are available at all times.
- Minimize downtime for the mailbox users.

Which three actions should you perform in sequence? To answer, move the appropriate actions from the list of actions to the answer area and arrange them in the correct order.

Actions		Answer Area
Remove all of the replicated database copies.	<div>➤</div> <div>➤</div>	
Create a new database.		
Dismount the replicas of the database.		
Move the database.		⬅
Mount the new database.		⬅
Mount the replicas of the database		⬅
Create replicated database copies.		⬅

Answer:

Explanation:

Actions	Answer Area
Remove all of the replicated database copies.	Remove all of the replicated database copies.
Create a new database.	Move the database.
Dismount the replicas of the database.	Create replicated database copies.
Move the database.	⬅
Mount the new database.	⬅
Mount the replicas of the database	⬅
Create replicated database copies.	⬅

NEW QUESTION 189

Your company has two offices. The offices are located in San Francisco and Los Angeles. Each office contains a data center. Each data center has a local connection to the Internet.

You deploy an Exchange Server 2016 organization named Contoso and install three servers in each data center.

All of the servers are members of a single database availability group (DAG). Each data center hosts 2,000 mailboxes that replicate to the other data center.

You create four records in DNS. The records are configured as shown in the following table.

Record Name	Type	Points to	Zone
Lamail.contoso.com	A	Los Angeles data center	Public
Sfmail.contoso.com	A	San Francisco data center	Public
Mail.contoso.com	CNAME	Lamail.contoso.com Sfmail.contoso.com	Public
Mail.contoso.com	A	Los Angeles data center	Internal

You need to recommend a client access solution for the organization to meet the following requirements: When connecting from the Internet, all users must connect to the same namespace for Outlook on the Web. If a connection to the Internet fails at one data center, all users must be able to access their mailbox from the Internet.

When connecting from the Internet, all user connections to Exchange ActiveSync must be balanced equally across both data centers.

What is the best recommendation to achieve the goal? More than one answer choice may achieve the goal. Select the BEST answer.

- A. in the San Francisco office, configure the internal URLs of the servers to use the internal URL of sfmail.contoso.co
- B. In the Los Angeles office, configure
- C. in the San Francisco office, configure the external URLs of the servers to use the internal URL of sfmail.contoso.co
- D. In the Los Angeles office, configure
- E. Deploy a hardware-based load balancer to each office and configure all of the internal URLs to use mail.contoso.com.
- F. Deploy a hardware-based load balancer to each office and configure all of the external URLs to use mail.contoso.com.

Answer: D

NEW QUESTION 192

You deploy a new Exchange Server 2016 organization. The organization contains Two Mailbox servers. You need to reject email messages if a redundant copy of the messages cannot be generated.

What command should you run? To answer, select the appropriate options in the answer area

Answer Area

Set-TransportConfig	-RejectMessageOnShadowFailure	\$false
Set-TransportServer	-ShadowMessageAutoDiscardInterval	\$null
Set-TransportService	-ShadowRedundancyEnabled	\$true

Answer:

Explanation: **Answer Area**

Set-TransportConfig	-RejectMessageOnShadowFailure	\$false
Set-TransportServer	-ShadowMessageAutoDiscardInterval	\$null
Set-TransportService	-ShadowRedundancyEnabled	\$true

NEW QUESTION 196

You have an Exchange Server 2016 organization. The organization contains several servers.

Users in the marketing department often send Information Rights Management (IRM)-protected email messages. The IRM-protected messages are excluded from eDiscovery searches.

You need to configure the Exchange Server Organization to ensure that the contents of the mailboxes of the marketing department users are searched for all messages that contain the word ProjectX. The solution must prevent the email messages from being deleted permanently.

You user account is a member of the required role group.

Which three actions should you perform? Each correct answer present part of the solution.

- A. Run the New-Mailboxcmdlet
- B. Run the New-MailboxSearchcmdlet
- C. Run the Set-IRMConfigurationcmdlet
- D. Run the Search-Mailboxcmdlet
- E. Export the results from the discovery mailbox to a personal folders (PST) file, and then use Microsoft Outlook to open the PST file.
- F. Use Outlook on the web to open the discovery mailbox.

Answer: BCE

Explanation: References:

[https://technet.microsoft.com/en-us/library/dn440164\(v=exchg.160\).aspx?f=255&MSPPErr=-2147217396](https://technet.microsoft.com/en-us/library/dn440164(v=exchg.160).aspx?f=255&MSPPErr=-2147217396) [https://technet.microsoft.com/en-us/library/dd353189\(v=exchg.160\).aspx](https://technet.microsoft.com/en-us/library/dd353189(v=exchg.160).aspx)

NEW QUESTION 199

You have a server named EX01 that runs Exchange Server 2016. The disks on EX01 are configured as shown in the following table.

Volume name	Type	Contents
C	RAID1	Operating system
D	RAID10	Mailbox database named DB1
E	RAID10	Mailbox database named DB2

All users access their email by using Microsoft Outlook 2013.

From Performance Monitor, you discover that the MSExchange Database\I/O Database Reads Average Latency counter displays values that are higher than normal.

You need to identify the impact of the high counter values on user connections in the Exchange Server organization.

What are two client connections that will report slower performance when opening email messages? Each correct answer presents a complete solution.

NOTE: Each correct selection is worth one point.

- A. Outlook in Online Mode
- B. Outlook in Cached Exchange Mode
- C. Outlook on the web
- D. IMAP4 clients
- E. mobile devices using Exchange Active Sync

Answer: AC

NEW QUESTION 203

You have an Exchange Server 2010 organization that uses a namespace of mail.contoso.com. You are migrating the email infrastructure to Exchange Server 2016.

You need to minimize the number of changes that end users must make to their Microsoft Outlook client as a result of the migration.

Which two actions should you perform? Each correct answer presents part of the solution.

NOTE: Each correct selection is worth one point.

- A. Enable Outlook Anywhere on all the Exchange Server 2010 Client Access servers.
- B. Move the existing mail.contoso.com namespace to point to the Exchange Server 2016 servers.
- C. Create a new namespace named legacy.contoso.com and point the namespace to the Exchange Server 2010 servers.
- D. Run the Set-OutlookProvider cmdlet.
- E. Create a new namespace named migration.contoso.com and point the namespace to the Exchange Server 2016 servers.

Answer: AD

Explanation:

A: Outlook clients use Outlook Anywhere or MAPIHttp for internal connectivity to Exchange 2016 instead of MAPI/RPC.

D: The Set-OutlookProvider cmdlet creates the global settings for the Autodiscover service. It sets the AutoDiscoverConfig object under the Global Settings object in Active Directory and sets the attributes specified in the parameters listed in the Parameters section.

References:

<https://practical365.com/exchange-server/exchange-server-2016-migration-reviewing-namespaces/> [https://technet.microsoft.com/en-us/library/bb123683\(v=exchg.160\).aspx](https://technet.microsoft.com/en-us/library/bb123683(v=exchg.160).aspx)

NEW QUESTION 206

You have an Exchange Server 2016 organization.

You plan to migrate some of the users to Exchange Online.

You run the Microsoft Office 365 Hybrid Configuration Wizard and you discover that the Get-FederationInformation cmdlet fails to retrieve the required information.

You need to identify which DNS record must be configured to resolve the failure. What should you identify?

- A. an MX record for SMTP domain
- B. an A record for a Mailbox server
- C. a PTR record for the Mailbox server
- D. an A record for Autodiscover

Answer: D

NEW QUESTION 210

Your company has a data center. The data center contains a server that has Exchange Server 2016 and the Mailbox server role installed. Outlook anywhere clients connect to the Mailbox server by using the name outlook.contoso.com.

The company plans to open a second data center and to provision a database availability group (DAG) that spans both data centers.

You need to ensure that Outlook Anywhere clients can connect if one of the data centers becomes unavailable. What should you add to DNS?

- A. one A record
- B. two TXT records
- C. two SRV records
- D. one MX record

Answer: A

Explanation: References:

[https://technet.microsoft.com/en-gb/library/dd638104\(v=exchg.150\).aspx?f=255&MSPPErr=-2147217396](https://technet.microsoft.com/en-gb/library/dd638104(v=exchg.150).aspx?f=255&MSPPErr=-2147217396)

NEW QUESTION 211

You are upgrading your Exchange Server 2010 organization to Exchange Server 2016. You begin the migration to modern public folders. You create public folder mailboxes. You start the migration batches and ensure that the batches have completed. You need to finalize the migration to the modern public folders. Which command should you run first? To answer, select the appropriate options in the answer area.

<div>▼</div> <div>Complete-MigrationBatch</div> <div>New-MigrationBatch</div> <div>Set-OrganizationConfig</div> <div>Start-MigrationBatch</div>	<div>▼</div> <div>-PublicFoldersEnabled Remote</div> <div>PfMigration</div> <div>PublicFolderMigration</div> <div>-LocalFoldersEnabled Remote</div>
<div>▼</div> <div>Complete-MigrationBatch</div> <div>New-MigrationBatch</div> <div>Set-OrganizationConfig</div> <div>Start-MigrationBatch</div>	<div>▼</div> <div>-PublicFoldersEnabled Remote</div> <div>PfMigration</div> <div>PublicFolderMigration</div> <div>-LocalFoldersEnabled Remote</div>

Answer:

Explanation: Finalize the public folder migration (downtime required)

First, run the following cmdlet to change the Exchange 2016 deployment type to Remote: Set-OrganizationConfig -PublicFoldersEnabled Remote
Once that is done, you can complete the public folder migration by running the following command: Complete-MigrationBatch PublicFolderMigration
References: [https://technet.microsoft.com/en-us/library/dn912663\(v=exchg.160\).aspx](https://technet.microsoft.com/en-us/library/dn912663(v=exchg.160).aspx)

NEW QUESTION 212

You have an Exchange Server 2016 organization. You plan to configure the organization in a hybrid deployment. You need to identify which firewall ports must be open for Microsoft Azure Active Directory Connect (Azure AD Connect) to communicate with Azure Active Directory (Azure AD). Which two TCP ports should you identify? Each correct answer presents part of the solution. NOTE: Each correct selection is worth one point.

- A. 80
- B. 389
- C. 443
- D. 636
- E. 3289

Answer: AC

Explanation: References:
<https://docs.microsoft.com/en-us/azure/active-directory/connect/active-directory-aadconnect-ports>

NEW QUESTION 217

You have an Exchange Server 2016 organization. The organization contains accepted domains for contoso.com and litwareinc.com. The antimalware engine is enabled on Mailbox servers and uses the default policy. You do not create any custom malware rules. You need to notify internal senders when a malware attachment is detected. The rule must apply only when the recipient domain is contoso.com. Which two cmdlets should you use? Each correct answer presents part of the solution.

- A. Set-MalwareFilterPolicy
- B. New-MalwareFilterRule
- C. New-MalwareFilterPolicy
- D. Set-MalwareFilterRule

Answer: BC

Explanation: References:
[https://technet.microsoft.com/en-us/library/dn306062\(v=exchg.160\).aspx?f=255&MSPPErr=-2147217396](https://technet.microsoft.com/en-us/library/dn306062(v=exchg.160).aspx?f=255&MSPPErr=-2147217396) [https://technet.microsoft.com/en-us/library/p15680\(v=exchg.160\).aspx?f=255&MSPPErr=-2147217396](https://technet.microsoft.com/en-us/library/p15680(v=exchg.160).aspx?f=255&MSPPErr=-2147217396)

NEW QUESTION 221

You have an Exchange Server 2016 organization. You are planning a Messaging Records Management (MRM) strategy. You need to configure the organization to meet the following requirements:

Implement an organization-wide setting that permanently deletes all email messages in default folders after five years.
Ensure that users can override the organization-wide email deletion setting.
Ensure that users can modify the default email archive schedule.

Implement an organization –wide setting that permanently deletes all email messages in default folders after five years:

▼
Retention policy tags
Personal tags
Default policy tags

Ensure that users can override the organization-wide email deletion setting:

▼
Retention policy tags
Personal tags
Default policy tags

Ensure that users can modify the default email archive schedule:

▼
Retention policy tags
Personal tags
Default policy tags

Answer:

Explanation: Box 1: Retention policy tags

Assigning retention policy tags (RPTs) to default folders, such as the Inbox and Deleted Items. Box 2: Personal tags

Allowing the user to assign personal tags to custom folders and individual items. Box 3: Default policy tags

Applying default policy tags (DPTs) to mailboxes to manage the retention of all untagged items. References: [https://technet.microsoft.com/en-us/library/dd297955\(v=exchg.160\).aspx](https://technet.microsoft.com/en-us/library/dd297955(v=exchg.160).aspx)

NEW QUESTION 225

Your network contains the servers configured as shown in the following table.

Server name	Role
EX01	Exchange Server 2016 Mailbox server
EX02	Exchange Server 2016 Mailbox server
FS01	File server

You run the New-DatabaseAvailabilityGroup cmdlet and you receive the following error message. The task was unable to create the default witness directory on server FS01.

Please manually specify a witness directory.

+ CategoryInfo : InvalidArgument : (:) [New-DatabaseAvailabilityGroup], DagFswUnableToBindWitnessDirectoryException

+ FullyQualifiedErrorId : [Server=EX01, RequestId-81b106a2-21e7-4ac3-8a23-e2e13e54a9fa, TimeStamp=11/13/2015 3:09:02 PM]

[FailureCategory=CmdletDagFswUnableToBindWitnessDirectoryException] 166B6E12, Microsoft. Exchange. Management. SystemConfigurationTasks.

NewDatabaseAvailabilityGroup

+ PSComputerName : EX01.contoso.com

You need to ensure that you can create the database availability group (DAG) successfully by using the NewDatabaseAvailabilityGroup cmdlet.

What should you do?

A. Add the Exchange Trusted Subsystem group to the local Administrators group on FS01.

B. Add the Delegated Setup role group to the local Administrators group on FS01.

C. Install the Failover Clustering feature on FS01.

D. Install the Remote Server Administration Tools feature on FS01.

Answer: A

NEW QUESTION 226

You have two standalone Exchange Server 2016 servers.

You perform daily full backups of the Exchange server databases. A user accidentally deletes some critical items.

You need to restore the critical items.

Which three actions should you perform in sequence? To answer, move the appropriate actions from the list of actions to the answer area and arrange them in the correct order.

Actions	Answer Area
Install another Exchange Server 2016 server in a temporary organization.	
Run the New-MailboxRestoreRequest cmdlet.	
Create a new mailbox database. Move the mailbox of the user to the new mailbox database.	
Restore the mailbox database.	
Run the New-MailboxDatabase cmdlet and specify the -Recovery switch.	

Answer:

Explanation: Box 1: Create a recovery database.

A recovery database (RDB) is a special kind of mailbox database that allows you to mount and extract data from a restored mailbox database as part of a recovery operation. RDBs allow you to recover data from a backup or copy of a database without disrupting user access to current data.

Box 2: Restore the mailbox database.

After you create an RDB, you can restore a mailbox database into the RDB by using a backup application or by copying a database and its log files into the RDB folder structure.

Box 3: New-MailboxRestoreRequest with -Recovery

Use the New-MailboxRestoreRequest cmdlet to restore a mailbox or items from the recovery database to a production mailbox.

Note: A recovery database (RDB) is a special kind of mailbox database that allows you to mount and extract data from a restored mailbox database as part of a recovery operation. RDBs allow you to recover data from a backup or copy of a database without disrupting user access to current data.

After you create an RDB, you can restore a mailbox database into the RDB by using a backup application or by copying a database and its log files into the RDB folder structure. Then you can use the

New-MailboxRestoreRequest cmdlet to extract data from the recovered database. Once extracted, the data can then be exported to a folder or merged into an existing mailbox.

References: [https://technet.microsoft.com/en-us/library/ee332351\(v=exchg.160\).aspx#Use the Exchange Management Shell to recover data using a recovery database](https://technet.microsoft.com/en-us/library/ee332351(v=exchg.160).aspx#Use the Exchange Management Shell to recover data using a recovery database)

NEW QUESTION 231

You need to configure a distribution group named CustomerService that has the following configurations:

- A user named CSManager must be the only user allowed to add members to CustomerService.
- All email messages sent to CustomerService must be approved by CSManager.
- External users must be allowed to send email messages to CustomerService. You configure CSManager as the group owner.

What should you configure in the Exchange admin center for each requirement?

To answer, drag the appropriate configurations to the correct requirements. Each configuration may be used once, more than once, or not at all. You may need to drag the split bar, between panes or scroll to view content.

Configurations	Answer Area
Delivery Management	A user named CSManager must be the only user allowed to add members to CustomerService: Configuration
Membership Approval	All email messages sent to CustomerService must be approved by CSManager: Configuration
Moderation	External users must be allowed to send email messages to CustomerService: Configuration
Ownership	

Answer:

Explanation:

Configurations

Delivery Management

Membership Approval

Moderation

Ownership

Answer Area

A user named CSManager must be the only user allowed to add members to CustomerService:

Ownership

All email messages sent to CustomerService must be approved by CSManager:

Moderation

External users must be allowed to send email messages to CustomerService:

Delivery Management

NEW QUESTION 232

Note: This question is part of a series of questions that present the same scenario. Each question in the series contains a unique solution that might meet the stated goals. Some question sets might have more than one correct solution, while others might not have a correct solution.

After you answer a question in this section, you will NOT be able to return to it. As a result, these questions will not appear in the review screen.

You have an Exchange Server 2016 organization.

Some users access the mailbox on their mobile device by using Exchange ActiveSync.

You need to prevent the users from synchronizing more than one month of email or calendar data to their device.

Solution: You create a throttling policy for the mobile device users. Does this meet the goal?

A. Yes

B. No

Answer: B

NEW QUESTION 233

.....

Thank You for Trying Our Product

* 100% Pass or Money Back

All our products come with a 90-day Money Back Guarantee.

* One year free update

You can enjoy free update one year. 24x7 online support.

* Trusted by Millions

We currently serve more than 30,000,000 customers.

* Shop Securely

All transactions are protected by VeriSign!

100% Pass Your 70-345 Exam with Our Prep Materials Via below:

<https://www.certleader.com/70-345-dumps.html>