

## Exam Questions 70-339

Managing Microsoft SharePoint Server 2016

<https://www.2passeasy.com/dumps/70-339/>



### NEW QUESTION 1

You are the SharePoint administrator for a company that has the following environment:

- A SharePoint 2016 farm named sharepoint. contoso. com
- The Microsoft ExchangeOnlineserviceatmaili.contoso.com
- A SQL Server named SQL1

You are planning integration between SharePoint 2016 and Office 365. You need to create the Search service to integrate the services.

How should you complete the Windows PowerShell commands? To answer, select the appropriate Windows PowerShell segment from each list in the answer area.

#### Answer area

▼

-Name App1 -Account SvcAcct1

New-SPServiceApplicationPool

New-SPServiceApplicationProxyGroup

New-SPSubScriptonSettingsServiceApp

New-SPEnterpriseSearchServiceApplication

#### Start-SPEnterpriseSearchServiceInstance Service1

▼

-Name Service1

New-SPServiceApplicationPool

New-SPServiceApplicationProxyGroup

New-SPSubScriptonSettingsServiceApp

New-SPEnterpriseSearchServiceApplication

-ApplicationPool App1 -DatabaseServer SQL1 -CloudIndex \$true

**Answer:**

**Explanation:** References:

<https://blogs.msdn.microsoft.com/spses/2015/09/15/cloud-hybrid-search-service-application/>

### NEW QUESTION 2

You have an on-premises SharePoint 2016 environment. You want to use Power View and PowerPivot features including Power View reports that are embedded in Microsoft Excel workbooks.

You need to deploy the new features.

Which two actions should you perform? Each correct answer presents part of the solution.

- A. Install PerformancePoint Services.
- B. Install SQL Server 2016 Reporting Services (SSRS) in SharePoint integrated mode.
- C. Install an Office Online server.
- D. Install SQL Server 2016 Reporting Services (SSRS) in native mode.

**Answer:** BC

### NEW QUESTION 3

You are the SharePoint administrator for a company. The SharePoint environment experiences intermittent performance degradation at various times each day.

You need to gather information from the SharePoint Servers to help determine the cause of the performance degradation. You must be able to evaluate the information with both Windows tools and SharePoint tools.

In the table below, identify the action that you should perform to provide the information for each environment.

NOTE: Make only one selection in each column. Each correct selection is worth one point.

## Answer Area

Action	Windows monitoring	SharePoint usage data
Launch Task Manager	<input type="radio"/>	<input type="radio"/>
Launch Resource Monitor	<input type="radio"/>	<input type="radio"/>
Run the following Windows PowerShell cmdlet: <b>Get-SPDiagnosticsPerformanceCounter</b>	<input type="radio"/>	<input type="radio"/>
Run the following Windows PowerShell cmdlet: <b>Add-SPDiagnosticsPerformanceCounter</b>	<input type="radio"/>	<input type="radio"/>
Create a Data Collector set	<input type="radio"/>	<input type="radio"/>

Answer:

Explanation:

## Answer Area

Action	Windows monitoring	SharePoint usage data
Launch Task Manager	<input type="radio"/>	<input type="radio"/>
Launch Resource Monitor	<input checked="" type="radio"/>	<input type="radio"/>
Run the following Windows PowerShell cmdlet: <b>Get-SPDiagnosticsPerformanceCounter</b>	<input type="radio"/>	<input checked="" type="radio"/>
Run the following Windows PowerShell cmdlet: <b>Add-SPDiagnosticsPerformanceCounter</b>	<input type="radio"/>	<input type="radio"/>
Create a Data Collector set	<input type="radio"/>	<input type="radio"/>

### NEW QUESTION 4

In this section, you will see one or more sets of questions with the same scenario and problem. Each question presents a unique solution to the problem, and you must determine whether the solution meets the stated goals. Any of the solutions might solve the problem. It is also possible that none of the solutions solve the problem.

Once you answer a question in this section you will NOT be able to return to it. As a result, these questions will not appear in the review screen.

Note: This question is part of a series of questions that present the same scenario. Each question in the series contains a unique solution. Determine whether the solution meets the stated goals.

You are the SharePoint administrator for a company.

You must provide an on-premises SharePoint solution that helps monitor and analyze your business in order to make informed business decisions that align with the objectives and strategies for the company. The solution must include the following features:

- Dashboards
- Scorecards
- Key Performance Indicators (KPI) You configure Power BI.

Does the solution meet the goal?

- A. Yes
- B. No

Answer: B

**Explanation:** You need PerformancePoint Serviceswhich is a SharePoint BI tool. This is not the same as Power BI. References:  
[https://technet.microsoft.com/en-us/library/ee424392\(v=office.16\).aspx](https://technet.microsoft.com/en-us/library/ee424392(v=office.16).aspx)

NEW QUESTION 5

You are a SharePoint administrator for Contoso, Ltd. The company acquires WingTip Toys.  
You must be able to manage and administer SharePoint site collections in the WingTip Toys SharePoint farm by using Windows PowerShell.  
You need to configure permissions for SharePoint site collection administrators.  
What should you do?

- A. Add the WingTip Toys SharePoint administrators to the Site Collection Administrators group.
- B. Add the Contoso,Lt
- C. SharePoint administrators to the Site Collection Administrators group.
- D. Add the Contoso, Lt
- E. SharePoint administrators to the SharePoint\_Shell\_Access role.
- F. Add the WingTip Toys SharePoint administrators to the SharePoint\_Shell\_Access role.

Answer: C

NEW QUESTION 6

You manage the SharePoint2016 environment for a multinational company with 195 offices in 57 different regions. Each department in the company has its own site collection. Business users have Contribute access to their own department sites and Read access to all other department sites.  
You have the following requirements:

- Maintain a standardized list of office locations across all departments.
- Track the office location as metadata for contract documents that are stored in each of the departmental site collections.
- Business users must be able to add new office locations directly when they save new files to SharePoint.
- When a user adds a new office location, the location information must be accessible to all users for use on other documents.

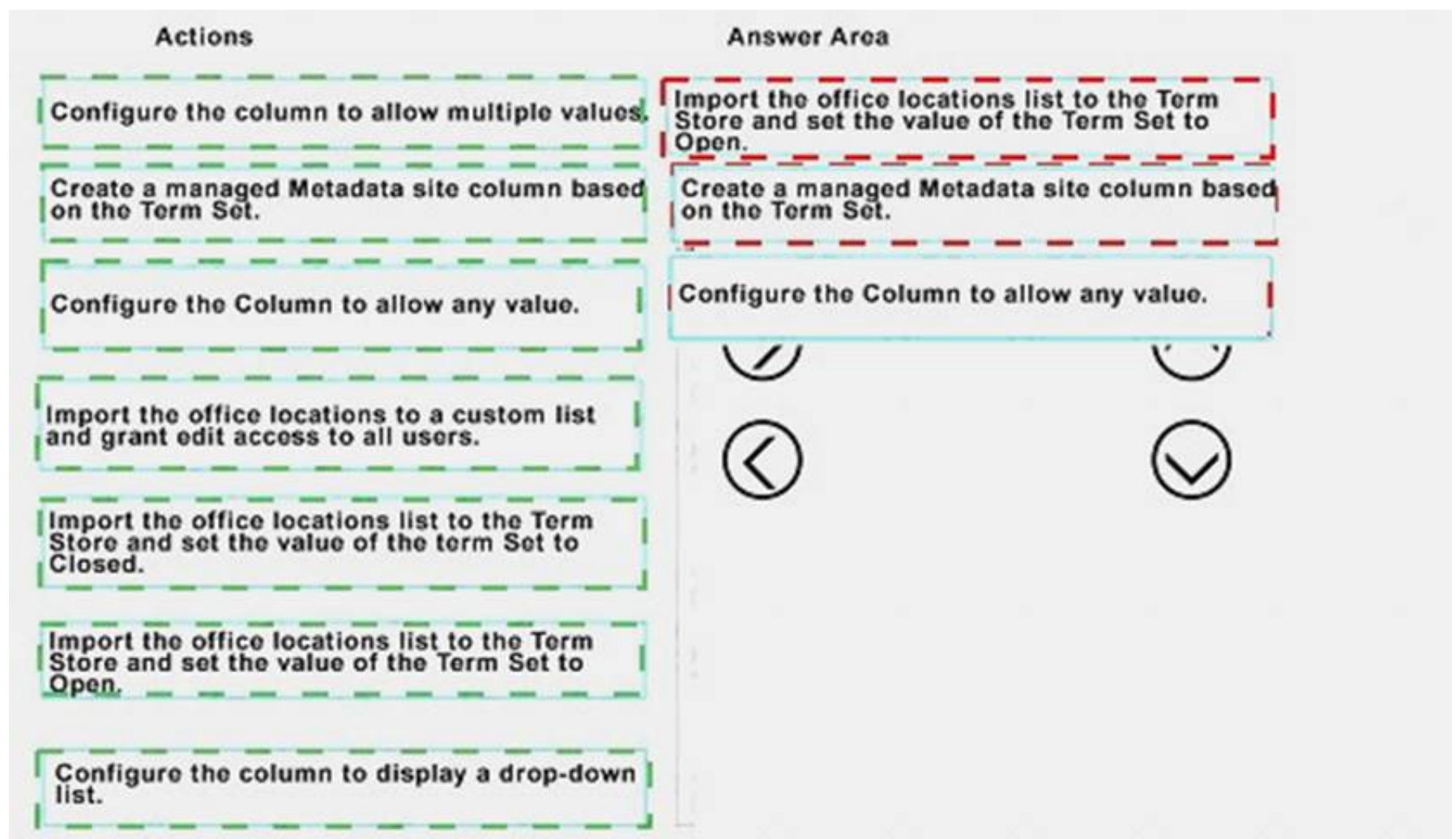
You need to configure SharePoint to track office location for contract documents.  
Which three actions should you perform in sequence? To answer, move the appropriate actions from the list of actions to the answer area and arrange them in the correct order.

Actions	Answer Area
Configure the column to allow multiple values.	
Create a managed Metadata site column based on the Term Set.	
Configure the Column to allow any value.	
Import the office locations to a custom list and grant edit access to all users.	✓
Import the office locations list to the Term Store and set the value of the term Set to Closed.	⏪
Import the office locations list to the Term Store and set the value of the Term Set to Open.	⏩
Configure the column to display a drop-down list.	✓

Answer:

Explanation:





#### NEW QUESTION 7

A company plans to deploy a SharePoint 2016 farm. The company only has enough budget to purchase four SharePoint Server licenses and two SQL Server licenses.

The farm must be highly available.

You need to deploy the SharePoint 2016 farm.

Which two server role sets can you use? Each correct answer presents a complete solution.

- A. Two front-end servers and two custom servers.
- B. Two front-end servers and two application servers.
- C. One front-end server, one application server, and two custom servers.
- D. One front-end server, one application server, one Search Server, and one Distributed Cache server.

**Answer:** AB

**Explanation:** References:

[https://technet.microsoft.com/en-us/library/mt346114\(v=office.16\).aspx](https://technet.microsoft.com/en-us/library/mt346114(v=office.16).aspx) [https://technet.microsoft.com/en-us/library/mt743704\(v=office.16\).aspx](https://technet.microsoft.com/en-us/library/mt743704(v=office.16).aspx)

#### NEW QUESTION 8

You are a SharePoint administrator You set up a publishing website that is based on product catalogue data. You are configuring Search to retrieve and display content from the publishing website. Content managers have site collection administrator permissions.

You need to ensure that multiple crawls can occur for the same content at the same time.

What should you do? To answer, select the appropriate value from each list in the answer area.

Search administrators must enable the following crawl type:

☐

full crawl  
continuous crawl

Role that must initiate a full index of the catalog:

☐

site owner  
content managers

Answer:

Explanation:

Search administrators must enable the following crawl type:

☐

full crawl  
continuous crawl

Role that must initiate a full index of the catalog:

☐

site owner  
content managers

#### NEW QUESTION 9

Your organization has a complex retention schedule that clearly defines retention policies for all document types. Each department has its own SharePoint site. In many cases, a single document library on a department site may contain financial files, human resources files, and project documentation. The following table lists the retention policies that are in place.

Content type	Retention policy
Financial records	Delete files after five years.
Human resources files	Archive files after four years.
Project documentation	Retain files for three years after the project end date.

You must administer retention rules from a single location for each type of document and must leverage out of the box functionality. You need to configure the SharePoint environment to comply with the retention schedule. What should you do?

A. Configure information management policies for the document libraries.

- B. Activate the Disposition Approval feature.
- C. Activate the In-Place Records Management feature.
- D. Configure information management policies on content types.
- E. Activate library and folder-based retention.

Answer: D

NEW QUESTION 10

You are a SharePoint Administrator for Contoso, Ltd.  
While doing weekly maintenance you discover that a web application at <http://sharepoint.contoso.com> has an orphan site. The orphan site is located in the WSS\_Content database.  
You need to resolve the issue. What should you do?

- A. Run the following Windows PowerShell command: `$wa =Get-SPWebApplicationhttp://sharepoint.contoso.com$wa.Sites.SyncRoot`
- B. In Central Administration, select the <http://sharepoint.contoso.com> web applicatio
- C. Select the database that contains the orphaned sit
- D. Select Remove database and click O
- E. Run the Windows PowerShell cmdlet `Dismount-SPContentDB`.
- F. Run the following Windows PowerShell command: `$ContentDb = "WSS_Content"$db = Get-SPDatabase | where {$_.name -eq $ContentDb}Remove-SPContentDatabase $dbMount-SPContentDatabase-WebApplicaionhttp://sharepoint.contoso.com-Name $ContentDb`
- G. Run the following Windows PowerShell command: `$wa =Get-SPWebApplicationhttp://sharepoint.contoso.com$wa.Sites[0].Dispose()`

Answer: B

NEW QUESTION 10

You are the SharePoint administrator for Contoso. You are establishing a disaster recovery (DR) location for the SharePoint farm. You plan to create service application databases for the DR environment that are configured to use read-only mode.  
You need to add the service applications to the passive farm.  
For each service application, which option should you implement? To answer, select the appropriate option from each list in the answer area.

Service Application	Option
User Profile	<div><div></div><div>Failover SQL Server to the DR environment Grant the DR farm read and write access to the primary SQL Server Create a new database in the failover farm</div></div>
Managed metadata	<div><div></div><div>Failover SQL Server to the DR environment Grant the DR farm read and write access to the primary SQL Server Create a new database in the failover farm</div></div>

Answer:

Explanation:



Service Application	Option
User Profile	<div><div></div><div>Failover SQL Server to the DR environment Grant the DR farm read and write access to the primary SQL Server Create a new database in the failover farm</div></div>
Managed metadata	<div><div></div><div>Failover SQL Server to the DR environment Grant the DR farm read and write access to the primary SQL Server Create a new database in the failover farm</div></div>

NEW QUESTION 15

You provision and configure a new SharePoint farm. The farm has not been backed up. You need to back up all services applications in the farm. How should you complete the Windows PowerShell command? To answer, drag the appropriate Windows PowerShell segment to need to drag the split bar between panes or scroll to view content.

Windows PowerShell segment	Answer Area
Differential	Backup <div></div> -Directory\\srv01\backup\
Farm	-
Farm\Shared Services	-BackupMethod <div></div> - <div></div> Item
Full	
SPConfigurationDatabase	
SPFarm	

Answer:

Explanation:



### Windows PowerShell segment

Differential

Farm

Farm\Shared Services

Full

SPConfigurationDatabase

SPFarm

### Answer Area

Back SPFarm directory\\srv01\backup\

-BackupMethod Full Farm\Shared Services Item

#### NEW QUESTION 17

You have an existing SharePoint 2016 on-premises environment. You use document libraries as file archives. Users report that they cannot upload documents larger than 3 gigabytes (GB).

You need to ensure that users can upload any type of file up to 4 GB in size. What should you do?

- A. On each front-end server in the farm, locate the following registry key: HKEY\_LOCAL\_MACHINE\SYSTEM\CurrentControlSet\Services\WebClient\Parameter
- B. Set the value of the FileSizeLimitInBytes key to 4294967295. Then, restart the Web Client service.
- C. In SharePoint Central Administration, change the value of the Maximum Upload Size property for the web application.
- D. Run the following Windows PowerShell command: \$WebApp.MaximumFileSizePerExtension.Add("MaxFileSize", 4096000)
- E. Add the following markup to the web.config file for the web application: <httpRuntime executionTimeout="999999"maxRequestLength="4096000" requestValidationMode="2.0" />

**Answer: B**

#### NEW QUESTION 19

In this section, you will see one or more sets of questions with the same scenario and problem. Each question presents a unique solution to the problem, and you must determine whether the solution meets the stated goals. Any of the solutions might solve the problem. It is also possible that none of the solutions solve the problem.

Once you answer a question in this section you will NOT be able to return to it. As a result, these questions will not appear in the review screen.

Note: This question is part of a series of questions that present the same scenario. Each question in the series contains a unique solution. Determine whether the solution meets the stated goals.

You have an existing SharePoint 2016 on-premises environment. You are configuring a SharePoint hybrid solution.

You must store all personal sites in Office 365.

You configure the Managed Metadata service and User Profile service applications. You create a My Site Host site collection. In SharePoint Central Administration, you grant the Create Personal Site and Follow People and Edit Profile permissions to users and configure hybrid OneDrive for Business settings. Does the solution meet the goal?

- A. Yes
- B. No

**Answer: B**

#### NEW QUESTION 22

You manage a SharePoint 2016 farm.

You create a unique site collection for each department. For each site collection, you grant specific users the Full control permission level to their site collection. These users are responsible for creating lists and libraries in the site collections.

You need to prevent all users from creating subsites within their site collections.

Which three actions should you perform in sequence? To answer, move the appropriate actions from the list of actions to the answer area and arrange them in the correct order.

Actions	Answer area
Clear the permission to create subsites.	
Disable Self-Service Site Creation.	
Select the web application that hosts the site collections for each department.	
Modify user permissions for the site collection.	
Select Self-Service Site Creation settings page that hosts the site collections for each department.	
Verify that your user account is a member of the Farm Administrators SharePoint group.	

Answer:

Explanation:

Actions	Answer area
Clear the permission to create subsites.	Verify that your user account is a member of the Farm Administrators SharePoint group.
Disable Self-Service Site Creation.	Select the web application that hosts the site collections for each department.
Select the web application that hosts the site collections for each department.	Clear the permission to create subsites.
Modify user permissions for the site collection.	
Select Self-Service Site Creation settings page that hosts the site collections for each department.	
Verify that your user account is a member of the Farm Administrators SharePoint group.	

### NEW QUESTION 23

In this section, you will see one or more sets of questions with the same scenario and problem. Each question presents a unique solution to the problem, and you must determine whether the solution meets the stated goals. Any of the solutions might solve the problem. It is also possible that none of the solutions solve the problem.

Once you answer a question in this section you will NOT be able to return to it. As a result these questions will not appear in the review screen.

Note: This question is part of a series of questions that present the same scenario. Each question in the series contains a unique solution. Determine whether the solution meets the stated goals.

You have an existing SharePoint 2016 on-premises environment. You are configuring a SharePoint hybrid solution.

You must store all personal sites in Office 365.



You create App Management service, Managed Metadata service, and User Profile service applications. You create a web application and site collection for the My Site Host. You grant users the Create Personal Site and Follow People and Edit Profile permissions. Then, you create an audience for the users that will be redirected to Office 365. In the SharePoint Central Administration, you configure hybrid OneDrive for Business settings. Does this solution meet the goal?

- A. Yes
- B. No

Answer: A

#### NEW QUESTION 28

Note: This question is part of a series of questions that present the same scenario. Each question in the series contains a unique solution that might meet the stated goals. Some question sets might have more than one correct solution, while others might not have a correct solution.

After you answer a question in this sections, you will NOT be able to return to it. As a result, these questions will not appear in the review screen.

You manage an on-premises SharePoint Server 2016 farm and SharePoint Online.

You plan to deploy a SharePoint Search solution. The solution must meet the following requirements: You implement bi-directional hybrid topologies.

Does the solution meet the goal?

- A. Yes
- B. No

Answer: B

#### NEW QUESTION 32

Note: This question is part of a series of questions that present the same scenario. Each question in the series contains a unique solution that might meet the stated goals. Some question sets might have more than one correct solution, while others might not have a correct solution.

After you answer a question in this sections, you will NOT be able to return to it. As a result, these questions will not appear in the review screen.

You are the SharePoint administrator for a company.

Users report that pages from the human resources (HR) division site are taking a long time to render. You need to troubleshoot the reasons for the page rendering issues.

You enable the Developer Dashboard and examine the thread execution times, the SQL Server queries generated by each page, Windows Communication Foundation (WCF) calls, and URL names.

Does the solution meet the goal?

- A. Yes
- B. No

Answer: A

#### NEW QUESTION 35

You plan to deploy SharePoint Server 2016 for an organization. The default language for the installation is English.

You need to install multiple language packs on the SharePoint Server.

Which three actions should you perform in sequence? To answer, move the appropriate actions from the list of actions to the answer area and arrange them in the correct order.

Actions	Answer Area
Extract the language pack from the latest software updates download.	1 <input type="text"/>
Run serverlanguagepack.exe for the language pack.	2 <input type="text"/>
Run the SharePoint Products and Technologies Wizard.	3 <input type="text"/>
Run the SharePoint Products Configuration Wizard.	
Restart the SharePoint Server.	
Download the language pack.	



**Answer:**

**Explanation:** References: <https://docs.microsoft.com/en-us/sharepoint/install/install-or-uninstall-language-packs-0>

#### NEW QUESTION 39

Contoso, Ltd. plans to move team sites from an on-premises SharePoint environment to the cloud. You register the contoso.com domain with Office 365. You need to configure the Office 365 environment for the hybrid infrastructure before you configure the on-premises environment. Which three actions should you perform in sequence? To answer, move the appropriate actions from the list of actions to the answer area and arrange them in the correct order.

Actions	Answer area
Create a synchronization connection with Active Directory Domain Services for the User Profile service.	
Synchronize user accounts with Office 365.	
Run the Hybrid Picker.	
Assign licenses to users.	
Assign a UPN domain suffix.	

**Answer:**

**Explanation:** References:  
<https://technet.microsoft.com/en-gb/library/mt125509.aspx>

#### NEW QUESTION 44

You administer a SharePoint farm.

A site administrator in the marketing department asks permission to view the site usage report. You add the user to the Usage Monitors SharePoint group. The administrator reports that the page fails to load and displays an Access Denied message.

You need to ensure that the marketing department site administrator can view the site usage report. Which List permission should you add?

- A. Override List Behaviors
- B. View Application Pages
- C. Manage Personal Views
- D. Use Remote Interfaces

**Answer:** B

#### NEW QUESTION 46

You are the SharePoint administrator for your organization. You have one web application named WebApp1 in the farm.

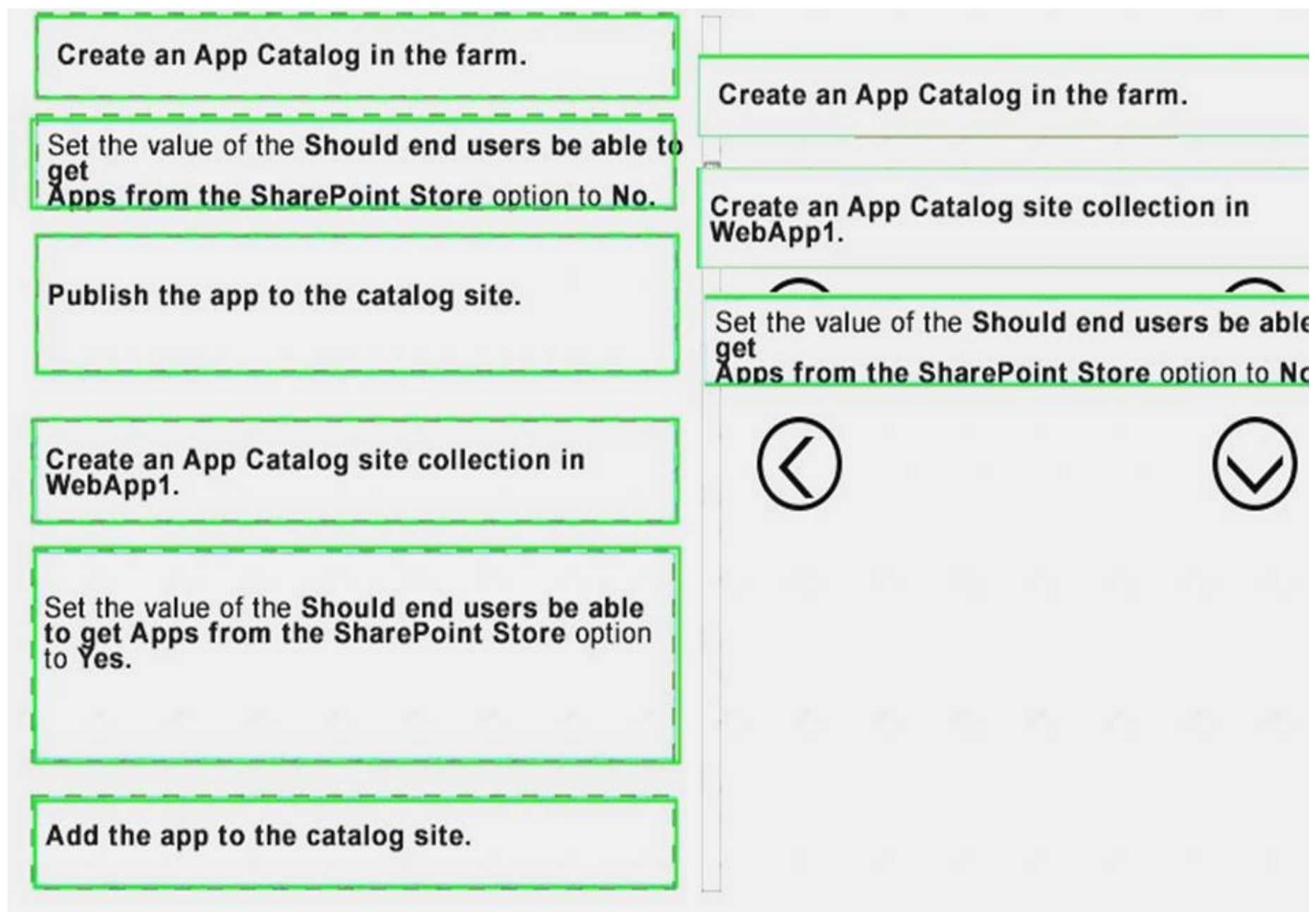
You need to prevent users from purchasing apps from the SharePoint Store while allowing users to request apps from the App Catalog.

Which three actions should you perform in sequence? To answer, move the appropriate actions from the list of actions to the answer area and arrange them in the correct order.

Create an App Catalog in the farm.	
Set the value of the <b>Should end users be able to get Apps from the SharePoint Store</b> option to <b>No</b> .	
Publish the app to the catalog site.	
Create an App Catalog site collection in WebApp1.	
Set the value of the <b>Should end users be able to get Apps from the SharePoint Store</b> option to <b>Yes</b> .	
Add the app to the catalog site.	

Answer:

Explanation:



#### NEW QUESTION 49

Note: This question is part of a series of questions that present the same scenario. Each question in the series contains a unique solution that might meet the stated goals. Some question sets might have more than one correct solution, while others might not have a correct solution.

After you answer a question in this sections, you will NOT be able to return to it. As a result, these questions will not appear in the review screen.

You are the SharePoint administrator for a company.

Users report that pages from the human resources (HR) division site are taking a long time to render. You need to troubleshoot the reasons for the page rendering issues.

You examine the Unified Logging Service (ULS) logs for performance issues and resource usage information. Does the solution meet the goal?

- A. Yes
- B. No

**Answer:** A

#### NEW QUESTION 52

You manage a SharePoint 2016 farm.

You need to import user profiles and photos from Active Directory to the SharePoint 2016 farm. Which tool or service should you use?

- A. User Profile service application
- B. Active Directory Import
- C. Microsoft Identity Manager
- D. Microsoft Forefront Identity Manager

**Answer:** A

**Explanation:** References:

<https://technet.microsoft.com/en-us/library/jj219646.aspx>

#### NEW QUESTION 57

You deploy a SharePoint2016 environment. You configure outgoing email settings for all SharePoint Servers. You need to enable encrypted communication between all SharePoint Servers and the enterprise SMTP server. Which two actions should you perform? Each correct answer presents part of the solution.

- A. Configure the SMTP server to support the TLS 1.0, TLS 1.1, or TLS 1.2 protocols.
- B. Install a server certificate on the SharePoint Server.
- C. Configure the SMTP server to support the SSL 2.0 or SSL 3.0 protocols.
- D. Enable STARTTLS encryption on the SharePoint Servers.
- E. Enable STARTTLS encryption on the enterprise SMTP server.

**Answer:** AE



#### NEW QUESTION 60

You are the system administrator for a company. You have both Microsoft Exchange 2016 and SharePoint 2016 in your environment. You plan to integrate SharePoint and Exchange and use site mailboxes. You need to configure the environment to support site mailboxes. Which three actions should you perform in sequence? To answer, move the appropriate actions from the list of actions to the answer area and arrange them in the correct order.

Actions	Answer Area
Copy the Set-SiteMailboxConfig and Check-SiteMailboxConfig scripts to the SharePoint web front-end servers in the SharePoint farm. Then, run the Set-SiteMailboxConfig script.	
Copy the Set-SiteMailboxConfig and Check-SiteMailboxConfig scripts to the SharePoint web front-end servers in the SharePoint farm. Then, run the Check-SiteMailboxConfig script.	
Install the Exchange Server Web Services API on each Exchange front-end server.	
Install the Exchange Server Web Services API on each web front-end server in the SharePoint farm.	
On a SharePoint server, run the Configure-EnterprisePartnerApplication script.	
On an Exchange server, run the Configure-EnterprisePartnerApplication script.	

Answer:

Explanation:

Actions	Answer Area
Copy the Set-SiteMailboxConfig and Check-SiteMailboxConfig scripts to the SharePoint web front-end servers in the SharePoint farm. Then, run the Set-SiteMailboxConfig script.	Install the Exchange Server Web Services API on each web front-end server in the SharePoint farm.
Copy the Set-SiteMailboxConfig and Check-SiteMailboxConfig scripts to the SharePoint web front-end servers in the SharePoint farm. Then, run the Check-SiteMailboxConfig script.	Copy the Set-SiteMailboxConfig and Check-SiteMailboxConfig scripts to the SharePoint web front-end servers in the SharePoint farm. Then, run the Check-SiteMailboxConfig script.
Install the Exchange Server Web Services API on each Exchange front-end server.	On an Exchange server, run the Configure-EnterprisePartnerApplication script.
Install the Exchange Server Web Services API on each web front-end server in the SharePoint farm.	
On a SharePoint server, run the Configure-EnterprisePartnerApplication script.	
On an Exchange server, run the Configure-EnterprisePartnerApplication script.	

#### NEW QUESTION 61

You are an administrator for an on-premises SharePoint 2016 farm. A partner organization needs access to some of the resources in the farm. The partner organization does not use Windows Active Directory and does not have third-party signed certificates. The partner organization does not have the personnel or expertise to set up and manage a public key infrastructure (PKI). The partner organization can supply you with a file that lists the users who need access to your SharePoint farm.

All access to SharePoint resources must be authenticated.

You need to configure authentication for the partner organization. What should you do?

- A. Configure forms-based authentication.
- B. Configure a federated relying party trust.
- C. Configure a cross-forest trust.
- D. Configure anonymous access.

Answer: A

NEW QUESTION 65

You are an administrator for a company. You manage the company's SharePoint environment. You also manage SQL Server and file system backups. All SQL instances run SQL Server 2014 SP1.

The data analytics team releases a custom reporting and analytics solution.

You need to provide a backup plan for the custom reporting and analytics solution.

In the table below, identify the component that you can back up for each backup method. Note: Make only one selection in each column. Each correct selection is worth one point.

Component	SQL Server backups	File system backups
Web Applications	<input type="radio"/>	<input type="radio"/>
Customizations not deployed as solution packages	<input type="radio"/>	<input type="radio"/>
SharePoint list items	<input type="radio"/>	<input type="radio"/>
SharePoint content databases	<input type="radio"/>	<input type="radio"/>
SQL Server Reporting Services databases	<input type="radio"/>	<input type="radio"/>

Answer:

Explanation:

Component	SQL Server backups	File system backups
Web Applications	<input type="radio"/>	<input checked="" type="radio"/>
Customizations not deployed as solution packages	<input type="radio"/>	<input checked="" type="radio"/>
SharePoint list items	<input type="radio"/>	<input checked="" type="radio"/>
SharePoint content databases	<input checked="" type="radio"/>	<input type="radio"/>
SQL Server Reporting Services databases	<input checked="" type="radio"/>	<input type="radio"/>

#### NEW QUESTION 67

You are the system administrator for a company. The company's infrastructure includes the following:

- a SharePoint farm named sharepoint.contoso.com
- a Microsoft Exchange web URL named exchange.contoso.com

You need to configure integration between SharePoint and Exchange to support eDiscovery. What should you do? To answer, select the appropriate option from each list in the answer area.

#### Answer area

Step	Action
1	<div> <input type="text"/> <div>▼</div> <div> New-SPTtrustedSecurityTokenIssuer  .\Configure-EnterprisePartnerApplication.ps1  New-SPTtrustedServiceTokenIssuer </div> </div> <div> -Name Exchange -MetadataEndPoint  "https://exchange.contoso.com/autodiscover/metadata/json/1" </div>
2	Run the following script: <code>\Configure-EnterprisePartnerApplication.ps1 -AuthMetadataUrl "https://sharepoint.contoso.com/_layouts/15/metadata/json/1" -ApplicationType SharePoint</code>
3	Add authorized users to the <div> <input type="text"/> <div>▼</div> <div> Compliance Management  Discovery Management  RecordsManagement </div> </div> role group.

Answer:

**Explanation:** References:

[https://technet.microsoft.com/en-us/library/jj218665\(v=exchg.150\).aspx](https://technet.microsoft.com/en-us/library/jj218665(v=exchg.150).aspx)

#### NEW QUESTION 68

A company uses SharePoint Online and SharePoint Server 2016 on-premises.

You need to configure two-way federated search between SharePoint Online and SharePoint Server on-premises.

How should you configure federated search? To answer, drag the appropriate option to the correct result source and remote providers. Each option may be used



once, more than once, or not at all. You may need to drag the split bar between panes or scroll to view content.  
Note: Each correct selection is worth one point.

Products

SharePoint 2016

SharePoint Online

Federated Search

Outbound search

Inbound search

Result source

Product

Product

Remote provider

Product

Product

Answer:

Explanation:

Products

SharePoint 2016

SharePoint Online

Federated Search

Outbound search

Inbound search

Result source

SharePoint 2016

SharePoint Online

Remote provider

SharePoint Online

SharePoint 2016

NEW QUESTION 69

In this section, you will see one or more sets of questions with the same scenario and problem. Each question presents a unique solution to the problem, and you must determine whether the solution meets the stated goals. Any of the solutions might solve the problem. It is also possible that none of the solutions solve the problem.

Once you answer a question in this section you will NOT be able to return to it. As a result, these questions will not appear in the review screen.

Note: This question is part of a series of questions that present the same scenario. Each question in the series contains a unique solution. Determine whether the solution meets the stated goals.

You have an existing SharePoint 2016 on-premises environment. You are configuring a SharePoint hybrid solution.

You must store all personal sites in Office 365.

You create and configure a User Profile service application and deploy an App Management service application. You deploy a My Site host collection. In SharePoint Central Administration, you create an audience. On the Configure hybrid OneDrive for Business settings page, you enter a value for the My Site URL field and specify the audience.

Does this solution meet the goal?

- A. Yes
- B. No

Answer: B

NEW QUESTION 71

You manage a SharePoint Server. The operating system, Search index files, and blob cache are located on separate drives.

You observe the following issues:

- file lock out errors
- delays in indexing of content

overall poor SharePoint Search performance  
 occasional virus and malware warning  
 You determine that antivirus scans are causing the issues. You need to resolve the issues.  
 How should you configure antivirus scanning? To answer, select the appropriate options in the answer area.  
 NOTE: Each correct selection is worth one point.

Item	Action
Blob Cache folders	<div>▼</div> <div>exclude</div> <div>include</div>
Search index files	<div>▼</div> <div>exclude</div> <div>include</div>
Operating System files	<div>▼</div> <div>exclude</div> <div>include</div>

Answer:

**Explanation:** References:  
<https://support.microsoft.com/en-us/help/952167/certain-folders-may-have-to-be-excluded-from-antivirus-scann>

#### NEW QUESTION 74

A company uses SharePoint2016 in a hybrid environment. You replace an administrator that has left the company.  
 A vendor notifies you that the SSL certificate that you purchased from the vendor is expired. The hybrid environment is not able to authenticate domain users that attempt to access it. When accessing the online environment by using a cloud user account, you observe that Search is not returning results from the entire farm.  
 You need to locate the expired certificates and renew them.  
 What should you do? To answer, select the appropriate certificate type of location from each list in the answer area.  
 Note: Each correct selection is worth one point.

Issue	Certificate type	Location
Domain users are unable to access online resources.	<div>▼</div> <div>STS certificate</div> <div>wildcard SSL certificate</div> <div>secure channel certificate</div>	<div>▼</div> <div>Office 365 tenant</div> <div>reverse proxy server</div> <div>federation server</div> <div>domain controller</div>
SharePoint Online search queries are not returning expected results.	<div>▼</div> <div>STS certificate</div> <div>wildcard SSL certificate</div> <div>domain certificate</div>	<div>▼</div> <div>Office 365 tenant</div> <div>reverse proxy server</div> <div>federation server</div> <div>domain controller</div>

Answer:

Explanation:

Issue	Certificate type	Location
Domain users are unable to access online resources.	<div> <div>▼</div> <div>                     STS certificate                      wildcard SSL certificate                      secure channel certificate                 </div> </div>	<div> <div>▼</div> <div>                     Office 365 tenant                      reverse proxy server                      federation server                      domain controller                 </div> </div>
SharePoint Online search queries are not returning expected results.	<div> <div>▼</div> <div>                     STS certificate                      wildcard SSL certificate                      domain certificate                 </div> </div>	<div> <div>▼</div> <div>                     Office 365 tenant                      reverse proxy server                      federation server                      domain controller                 </div> </div>

#### NEW QUESTION 79

In this section, you will see one or more sets of questions with the same scenario and problem. Each question presents a unique solution to the problem, and you must determine whether the solution meets the stated goals. Any of the solutions might solve the problem. It is also possible that none of the solutions solve the problem.

Once you answer a question in this section you will NOT be able to return to it. As a result, these questions will not appear in the review screen.

Note: This question is part of a series of questions that present the same scenario. Each question in the series contains a unique solution. Determine whether the solution meets the stated goals.

You are the SharePoint administrator for a company.

You must provide an on-premises SharePoint solution that helps monitor and analyze your business in order to make informed business decisions that align with the objectives and strategies for the company. The solution must include the following features:

- Dashboards
- Scorecards
- Key Performance Indicators (KPI) You configure Delve.

Does the solution meet the goal?

- A. Yes
- B. No

**Answer:** B

**Explanation:** You need PerformancePoint Services which is a SharePoint BI tool. References:  
[https://technet.microsoft.com/en-us/library/ee424392\(v=office.16\).aspx](https://technet.microsoft.com/en-us/library/ee424392(v=office.16).aspx)

#### NEW QUESTION 82

You are planning to create a high availability solution for your company's SharePoint environment. The company requires:

- the shortest possible recovery time
- automatic failover
- the usage of multiple subnets

You need to recommend a solution to the company's management team.

For each requirement, what should you recommend? To answer, drag the appropriate SQL Server options to the correct requirement. Each SQL Server option may be used once, more than once, or not at all. You may need to drag the split bar between panes or scroll to view content.

Note: Each correct selection is worth one point.



### Answer Area

#### SQL Server options

#### Requirement

#### SQL Server option

a failover cluster only

Shortest possible time to recovery

SQL Server options

an AlwaysOn Availability Group only

Automatic failover

SQL Server options

a high-availability mirror only

Use multiple subnets

SQL Server options

a failover cluster, an AlwaysOn Availability Group, and a high-availability mirror.

Answer:

Explanation:

### Answer Area

#### SQL Server options

#### Requirement

#### SQL Server option

a failover cluster only

Shortest possible time to recovery

a failover cluster only

an AlwaysOn Availability Group only

Automatic failover

a failover cluster, an AlwaysOn Availability Group, and a high-availability mirror.

a high-availability mirror only

Use multiple subnets

an AlwaysOn Availability Group only

a failover cluster, an AlwaysOn Availability Group, and a high-availability mirror.

#### NEW QUESTION 84

You are the administrator for a SharePoint 2016 farm. You configure a connection to the SharePoint Store. Users report that they cannot select or install specific apps from the SharePoint Store. Users can install other apps. You need to allow users to purchase and install any type of apps from the SharePoint Store. What should you do?

- A. Activate the Internet-facing endpoints feature for apps.
- B. Configure the Store settings to allow users to purchase apps.
- C. Deploy an App Catalog.
- D. Delete the existing App Catalog.
- E. Then, delete and provision the Subscription Setting and App Management service applications.

Answer: A

#### NEW QUESTION 86

You administer a SharePoint 2016 farm.

You must create a fully isolated sandbox term store for the user. Changes that the user makes must not affect the farm term store. The user must be able to manage the contributors list for the term store.

In the table below, identify the action that you must perform for each environment.

NOTE: Make only one selection in each column. Each correct selection is worth one point.

## Answer area

Action	Central Administration	Site collection settings
Create Content Type Syndication Hub.	<input type="radio"/>	<input type="radio"/>
Add a new Managed Metadata service application.	<input type="radio"/>	<input type="radio"/>
Grant the Group Manager permission to the user.	<input type="radio"/>	<input type="radio"/>
Add the Managed Metadata Service application proxy to a default group.	<input type="radio"/>	<input type="radio"/>
Create a local term set.	<input type="radio"/>	<input type="radio"/>

Answer:

Explanation: **Answer area**

Action	Central Administration	Site collection settings
Create Content Type Syndication Hub.	<input checked="" type="radio"/>	<input type="radio"/>
Add a new Managed Metadata service application.	<input checked="" type="radio"/>	<input type="radio"/>
Grant the Group Manager permission to the user.	<input type="radio"/>	<input checked="" type="radio"/>
Add the Managed Metadata Service application proxy to a default group.	<input checked="" type="radio"/>	<input type="radio"/>
Create a local term set.	<input type="radio"/>	<input checked="" type="radio"/>

### NEW QUESTION 90

You are customizing standard content types for an organization. For the tracking of a department, you must allow users to easily select or enter a value. In some cases, users may refer to a single department by more than one name. Users must be able to select or type any name for a department but the document must be associated with only one department. You need to create a column that supports the requirements. What should you do?

- A. Create a Choice site column that uses check boxes.
- B. Create a Choice site column that uses a drop-down menu.
- C. Create a Managed Metadata site column.
- D. Create a Choice list that uses a drop-down menu.

Answer: B

Explanation: <http://en.share-gate.com/blog/start-learn-sharepoint-advanced-column-types>

### NEW QUESTION 93

You manage a SharePoint environment. You need to block all ports on the SharePoint Servers that are not used for essential communications. To answer, drag the appropriate set of ports or port ranges to the correct service. Each set of ports or port ranges may be used once, more than once, or not at all. You may need to drag the split bar between the panes or scroll to view content. Note: Each correct selection is worth one point.



Ports and Protocols	Service	Ports and protocols
TCP 9354, TCP 9355, TCP 9356	Service Applications	Ports and Protocols
TCP 32843, TCP 32844, TCP 32845	People Search/ MIM	Ports and Protocols
TCP 5725	Search Index component	Ports and Protocols
TCP 16500-16519	Name resolution	Ports and Protocols
TCP/UDP 53	Kerberos	Ports and Protocols
TCP/UDP 88		
TCP 22233-22236		

Answer:

Explanation:

Ports and Protocols	Service	Ports and protocols
TCP 9354, TCP 9355, TCP 9356	Service Applications	TCP 32843, TCP 32844, TCP 32845
TCP 32843, TCP 32844, TCP 32845	People Search/ MIM	TCP 5725
TCP 5725	Search Index component	TCP 16500-16519
TCP 16500-16519	Name resolution	TCP/UDP 53
TCP/UDP 53	Kerberos	TCP/UDP 88
TCP/UDP 88		
TCP 22233-22236		

#### NEW QUESTION 95

You are the SharePoint administrator for a company that manufactures and sells computer hardware components. You plan to create a public-facing website that allows customers to search for and purchase components.

Customers must be able to navigate the website by component type, and then further refine searches by the operating systems that the components support. The URL that displays when a customer selects an item must indicate the component type. The URL must not display the full path to the page.

You need to implement a SharePoint site that allows customers to find the appropriate parts.

Which SharePoint site template and metadata feature should you use? To answer, select the appropriate option from each list in the answer area.



Answer area

SharePoint object

Selection

Site template

▼

Project  
Enterprise  
Publishing  
Record Center

Metadata feature

▼

Open term set  
Cross-farm Managed Metadata  
service subscription  
Enterprise keywords  
Friendly URL

Answer:

Explanation: Answer area

SharePoint object

Selection

Site template

▼

Project  
Enterprise  
Publishing  
Record Center

Metadata feature

▼

Open term set  
Cross-farm Managed Metadata  
service subscription  
Enterprise keywords  
Friendly URL

NEW QUESTION 96

During the upgrade from SharePoint2013to SharePoint2016, you discover there is a missing feature. You review the logs and observe the following error message:

Message: Database [WSS\_Contoso\_OR01] has reference(s) to a missing feature: Id= [4be9a980-965f-486f-9eda-074e284875d7].

Remedy: The feature with Id 4be9a980-965f-486f-9eda-074e284875d7 is referenced in the database [WSS\_Contoso\_OR01], but is not installed on the current farm.

The missing feature may cause upgrade to fail. Please install any solution which contains the feature and restart upgrade if necessary.

You need to identify the page that is missing the feature. Which of the following will identify the page?

- A. On the SharePoint Server, run the following Windows PowerShellcommand:Test-SPContentDatabase-Narne SdbName-WebApplication \$wa| Select Category, Message |Where {\$\_.Category-eq "MissingFeature"}
- B. On the SharePoint Server, run the following Windows PowerShellcommand:Test-SPContentDatabase-Name SdbName-WebApplication \$wa| Select Category, Message | Where{\$\_.Category-eq "MissingSetupFile"}
- C. On the SQL Server, run the following SQL syntax against WSS\_Contoso\_OR01 :SELECT FeatureId, FullURL From WebsInner JOIN FeaturesOnWebs.Id=Features.WebIdWHEREFeatureId='4be9a980-965f-486f-9eda-074e284875d7'ORDERBYFeatur
- D. On the SharePoint Server, review the Health Analyzer and find the missing dependencies.

Answer: A

#### NEW QUESTION 100

Note: This question is part of a series of questions that present the same scenario. Each question in the series contains a unique solution that might meet the stated goals. Some question sets might have more than one correct solution, while others might not have a correct solution.

After you answer a question in this sections, you will NOT be able to return to it. As a result, these questions will not appear in the review screen.

You are the SharePoint administrator for a company.

Users report that pages from the human resources (HR) division site are taking a long time to render. You need to troubleshoot the reasons for the page rendering issues.

You analyze the SharePoint health reports. Does the solution meet the goal?

- A. Yes
- B. No

**Answer: A**

#### NEW QUESTION 104

A company has an on-premises SharePoint farm. The company also uses SharePoint Online. Employees must be able to access on-premises sites and SharePoint Online resources.

You must use single sign-on (SSO). You need to configure authentication.

Which three options should you configure? Each correct answer presents part of the solution.

- A. Windows Azure directory synchronization without Password Sync
- B. server to server authentication
- C. Active Directory Federation Services 2.0 with SSO
- D. forward proxy configuration
- E. Windows Azure directory synchronization with Password Sync

**Answer: CDE**

#### NEW QUESTION 109

You are a SharePoint administrator for Contoso, Ltd. You manage an on-premises SharePoint environment. A user named User1 is the site collection administrator for the Human Resources (HR) site. User1 leaves the company and is replaced with a user named User2.

Access requests for the HR SharePoint site are still being sent to User1. You need to ensure that User2 receives all access requests to the HR site.

How should you complete the Windows PowerShell commands? To answer, select the appropriate Windows PowerShell segment from each list in the answer area.

\$obj=

▼

Get-SPSite  
Get-SPWeb  
Get-SPSiteUrl

http://contoso.com/sites/HR

\$obj.RequestAccessEmail= "User2@contoso.com"

▼

\$obj Update()  
Set-SPSite  
Set-SRWeb  
Set-SPSiteURL  
\$obj Close()

**Answer:**

**Explanation:**

\$obj=

Get-SPSite  
Get-SPWeb  
Get-SPSiteUrl

http://contoso.com/sites/HR

\$obj.RequestAccessEmail= "User2@contoso.com"

\$obj Update()  
Set-SPSite  
Set-SPWeb  
Set-SPSiteURL  
\$obj Close()

NEW QUESTION 111

You upgrade a company's SharePoint 2013 farm to SharePoint 2016. You are responsible for optimizing the performance of the SharePoint 2016 farm. You must improve page load performance and implement PerformancePoint in the farm. You need to deploy additional MinRole servers in the environment. For each requirement, which MinRole role should you implement? To answer, drag the appropriate MinRole role to the correct requirement. Each role may be used once, more than once, or not at all. You may need to drag the split bar between panes or scroll to view content.

NOTE: Each correct selection is worth one point.

MinRole roles

Application

Search

SingleServer

Distributed Cache

Custom

Front-end web

Answer area

Requirement

Improve page load performance

Implement PerformancePoint

MinRole role

MinRole role

MinRole role

Answer:

Explanation: References:  
https://blogs.technet.microsoft.com/wbaer/2015/09/18/distributed-cache-in-sharepoint-server-2016-it-preview/

NEW QUESTION 114

You are a SharePoint administrator for Contoso, Ltd. You manage a large SharePoint Server farm. You configure a single SharePoint Search application for the farm. The Search Service application has five crawl databases. All crawl databases have content. Contoso would like to crawl content from a partner company named WingTip Toys. This crawled content must be stored in a dedicated crawl database. You need to configure the environment. What should you do?



- A. Provision a new Search Server for the existing Search Service applicatio
- B. Add dedicated crawl components for WingTip Toys to the new Search Server.
- C. Create a dedicated Microsoft SQL Server instance for the WingTip crawl database.
- D. Add a crawl database to the existingSearch Service application.
- E. Provision a new Search Service applicatio
- F. Configure the Search Service application to crawl WingTip Toys content.

**Answer: C**

**Explanation:** Maximum crawl databases per Search Service application increased from 5 to 15 in SharePoint 2016. References:  
[https://technet.microsoft.com/en-gb/library/cc262787\(v=office.16\).aspx](https://technet.microsoft.com/en-gb/library/cc262787(v=office.16).aspx)

#### NEW QUESTION 118

You have a SharePoint 2016 farm that has two Web front-end servers, two application servers, one SQL Server instance, and an Office Web Apps 2013 server. Business users create reports that contain links to files that are stored in different document libraries. You have a workflow that moves documents modified more than 30 days ago from any document libraries to a designated archive library. Users report that after documents are moved to the archive library, the links in the reports do not work. You need to ensure that the document links still work for archived documents when users open documents in Office Online. Which feature should you use?

- A. Managed Metadata navigation
- B. Durable Links
- C. Path-based redirects
- D. Document identifiers

**Answer: B**

#### NEW QUESTION 120

Note: This question is part of a series of questions that present the same scenario. Each question in the series contains a unique solution that might meet the stated goals. Some question sets might have more than one correct solution, while others might not have a correct solution.

After you answer a question in this sections, you will NOT be able to return to it. As a result, these questions will not appear in the review screen.

You are the SharePoint administrator for a company.

Users report that pages from the human resources (HR) division site are taking a long time to render. You need to troubleshoot the reasons for the page rendering issues.

You monitor the SharePoint BLOB cache, the ASP.NET output cache, and the SharePoint object cache.

Does the solution meet the goal?

- A. Yes
- B. No

**Answer: B**

#### NEW QUESTION 122

You are preparing to migrate content from your SharePoint Server 2016 farm to a new location. All content is hosted within a single web application across 150 site collections.

You have the following requirements:

- \* Users must be able to view existing content during the migration, but must not make changes.
- \* You must minimize the amount of time that the migration takes.
- \* You must return all access rights to their previous state once migration is complete. You need to configure the SharePoint site collections.

What should you configure?

- A. an information management policy
- B. privacy options
- C. Read only access for content
- D. alternate access mappings
- E. a user policy

**Answer: C**

#### NEW QUESTION 127

A company uses SharePoint Server 2016 to manage documents and Microsoft Exchange Server 2013 for email. The company's legal and compliance team wants to be able to place holds on content to restrict data loss.

The legal and compliance team has the following requirements:

- Team members must be able to search Exchange content from within SharePoint, including employee email messages.
- Team members must be able to export data by performing a single action.
- This content must only be accessible to the team members after you verify that the environment is configured property.

You need to configure the SharePoint environment.

Which three actions should you perform in sequence? To answer, move the appropriate actions from the list of actions to the answer area and arrange them in the correct order.

Actions	Answer Area
Create a Search Center and share the center with the legal and compliance team.	
Create a SharePoint content source.	
Create an Exchange content source.	
Configure a trust between SharePoint and Exchange.	⬅️ ⬇️
Create an eDiscovery Center and share the center with the legal and compliance team.	
Create a SharePoint result source.	
Create an Exchange result source.	

Answer:

Explanation:

Actions	Answer Area
Create a Search Center and share the center with the legal and compliance team.	Configure a trust between SharePoint and Exchange.
Create a SharePoint content source.	Create a SharePoint content source.
Create an Exchange content source.	
Configure a trust between SharePoint and Exchange.	Create a Search Center and share the center with the legal and compliance team.
Create an eDiscovery Center and share the center with the legal and compliance team.	⬅️ ⬇️
Create a SharePoint result source.	
Create an Exchange result source.	

#### NEW QUESTION 131

You plan to install SharePoint Server 2016 in a new environment. You need to install the SharePoint Server prerequisite components. For each prerequisite installation method, which tool or command line utility should you use?

Install from a network share	<div> <div> <div></div> <div> <div>Setup.exe</div> <div>PrerequisiteInstaller.exe</div> <div>SharePoint Products Configuration Wizard</div> <div>Microsoft SharePoint Products and Technologies 2016 Preparation Tool</div> </div> </div> </div>
Install from the Internet	<div> <div> <div></div> <div> <div>Setup.exe</div> <div>PrerequisiteInstaller.exe</div> <div>SharePoint Products Configuration Wizard</div> <div>Microsoft SharePoint Products and Technologies 2016 Preparation Tool</div> </div> </div> </div>

Answer:

Explanation:

Install from a network share	<div> <div> <div></div> <div> <div>Setup.exe</div> <div>PrerequisiteInstaller.exe</div> <div>SharePoint Products Configuration Wizard</div> <div>Microsoft SharePoint Products and Technologies 2016 Preparation Tool</div> </div> </div> </div>
Install from the Internet	<div> <div> <div></div> <div> <div>Setup.exe</div> <div>PrerequisiteInstaller.exe</div> <div>SharePoint Products Configuration Wizard</div> <div>Microsoft SharePoint Products and Technologies 2016 Preparation Tool</div> </div> </div> </div>

### NEW QUESTION 132

Note: This question is part of a series of questions that present the same scenario. Each question in the series contains a unique solution that might meet the stated goals. Some question sets might have more than one correct solution, while others might not have a correct solution.

After you answer a question in this sections, you will NOT be able to return to it. As a result, these questions will not appear in the review screen.

You manage an on-premises SharePoint Server 2016 farm and SharePoint Online.

You plan to deploy a SharePoint Search solution. The solution must meet the following requirements: You customize search schema for content stored on on-premises at the site collection level.

Does the solution meet the goal?

- A. Yes
- B. No

Answer: B

### NEW QUESTION 135

You administer a SharePoint 2016 farm. You plan to implement My Site functionality. You need to configure the schedules for the timer jobs related to My Sites. For each job, which service should you modify? To answer, select the appropriate service from each list in the answer area.



## Answer Area

Service	Job to modify
Microsoft SharePoint Founda- tion Web Application	<div>▼</div> <div>My Site cleanup job</div> <div>Notification job</div> <div>Timer service recycle job</div>
Microsoft SharePoint Founda- tion Timer Service	<div>▼</div> <div>User Profile to SharePoint quick synchronization</div> <div>User Profile to SharePoint full synchronization</div> <div>User Profile service application - user profile change</div>

Answer:

Explanation:

## Answer Area

Service	Job to modify
Microsoft SharePoint Founda- tion Web Application	<div>▼</div> <div>My Site cleanup job</div> <div>Notification job</div> <div>Timer service recycle job</div>
Microsoft SharePoint Founda- tion Timer Service	<div>▼</div> <div>User Profile to SharePoint quick synchronization</div> <div>User Profile to SharePoint full synchronization</div> <div>User Profile service application - user profile change</div>

### NEW QUESTION 137

You are responsible for optimizing the SharePoint 2016 farm.

You need to improve the performance of Distributed Cache services. Which Windows PowerShell command should you run?

- A. Add-SPDistributedCacheServiceInstance
- B. Set-SPRequestManagementSettings -ThrottlingEnabled \$true
- C. Clear-SPDistributedCacheItem -ContainerType DistributedDefaultCache
- D. Update-SPDistributionCacheSize -CacheSizeInMB 16384

Answer: D

Explanation: References:

<https://docs.microsoft.com/en-us/powershell/module/sharepoint-server/Update-SPDistributedCacheSize?view=s>

### NEW QUESTION 139

Note: This question is part of a series of questions that present the same scenario. Each question in the series contains a unique solution that might meet the stated goals. Some question sets might have more than one correct solution, while others might not have a correct solution.

After you answer a question in this sections, you will NOT be able to return to it. As a result, these questions will not appear in the review screen.

You are the SharePoint administrator for a company.

The SharePoint environment is causing excessive information to be recorded in the diagnostic logs.

You need to configure the SharePoint farm to only write events to the Windows event log that are equal to or more severe than the Error level.

You run the following Windows PowerShell command: Set-SPUsageService -LoggingEnabled \$true

Does the solution meet the goal?

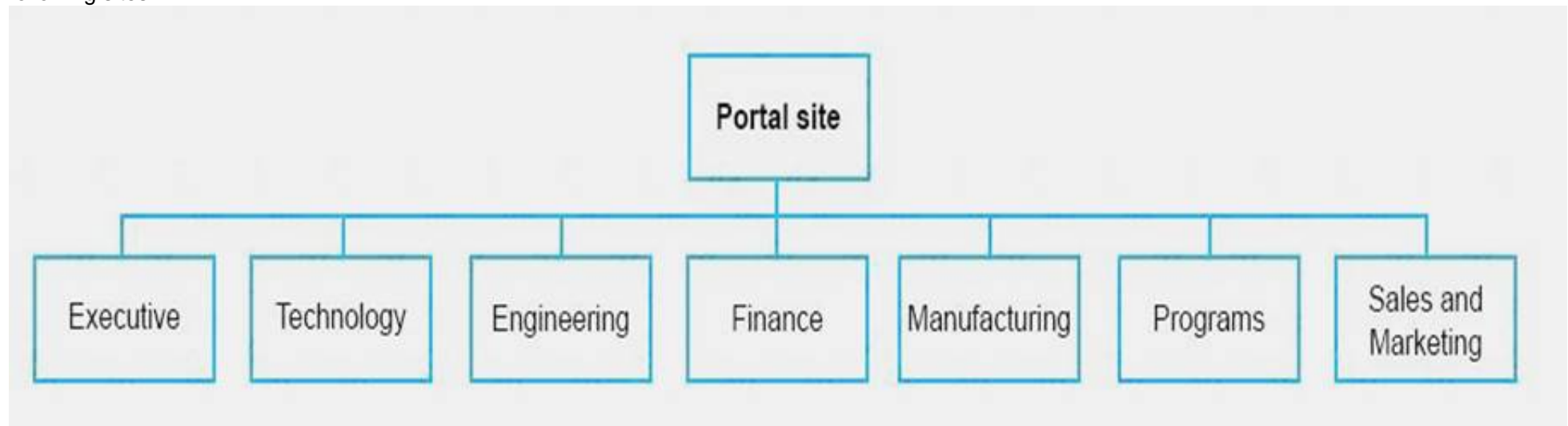
- A. Yes

B. No

**Answer:** B

#### NEW QUESTION 141

You are the SharePoint administrator for a company. You plan to deploy the SharePoint sites that will be accessible from the company portal. You create the following sites:



A user named User1 will manage the sites. You must prevent all users except for User1 from creating sites and subsites. User1 must be able to delegate management of List permissions to other users. You designate a user in each division as a lead for that division's site. You need to allow the designated lead in a division to manage their division's site while minimizing administrative effort. What should you do?

- A. For each site, add the designated divisional user account to the Team owners group for that divisions' site.
- B. Add all divisional user accounts to the portal site's Team Owners group.
- C. Create a new SharePoint group on the Portal site named SP Division Manager
- D. Grant the Designpermission to the group and add all designated divisional lead user accounts into the group.
- E. Add the designated divisional user account for each divisional site and grant each user the Design permission.
- F. Add all the designated divisional user account to the portal site and grant each user the Design permission.

**Answer:** D

#### NEW QUESTION 143

A college plans to enable personal sites for all users. All personal sites will be created in a dedicated web application. All staff, faculty members, and students have access to the same SharePoint environment.

You need to ensure that only college staff and faculty members can create personal sites. What should you do?

- A. Manage user permissions for the User Profile service application.
- B. Define site app permissions for the intranet site collection.
- C. Manage organization subtypes for the User Profile service application.
- D. Define permission levels for the intranet collection.

**Answer:** A

**Explanation:** <https://technet.microsoft.com/en-us/library/ee721063.aspx>

#### NEW QUESTION 144

Note: This question is part of a series of questions that present the same scenario. Each question in the series contains a unique solution that might meet the stated goals. Some question sets might have more than one correct solution, while others might not have a correct solution.

After you answer a question in this sections, you will NOT be able to return to it. As a result, these questions will not appear in the review screen.

You are the SharePoint administrator for a company.

You must provide an on-premises SharePoint solution that helps monitor and analyze your business in order to make informed business decisions that align with the objectives and strategies for the company. The solution must include the following features:

You install and configure PerformancePoint Services. Does the solution meet the goal?

- A. Yes
- B. No

**Answer:** A

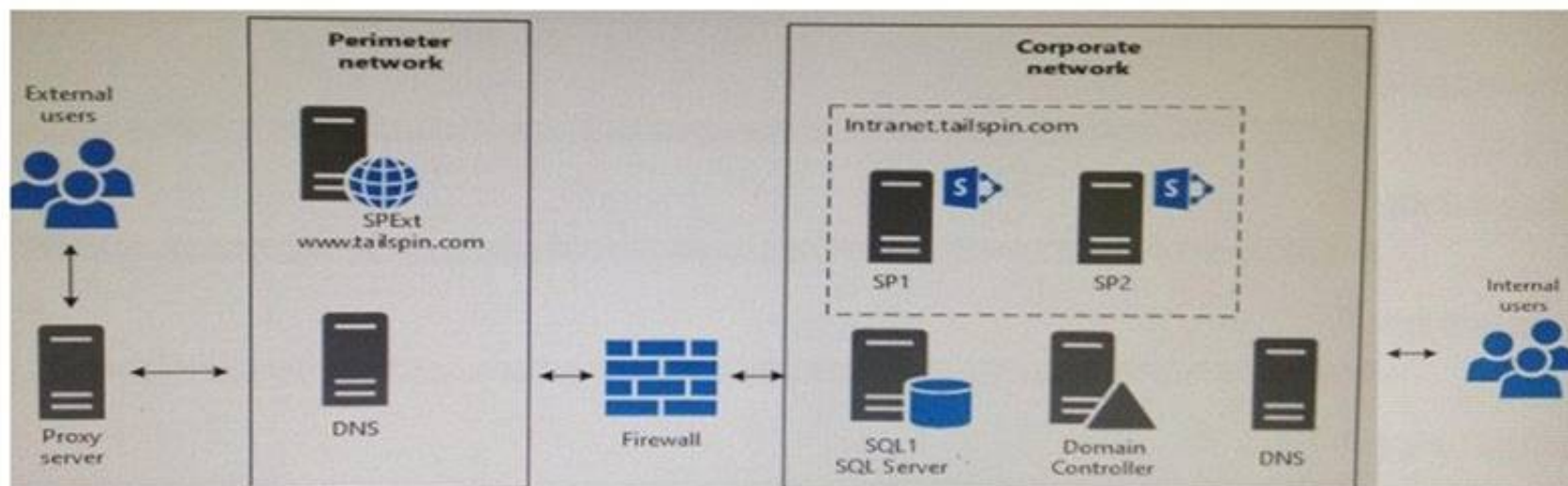
**Explanation:** Topic 2, Tailspin Toys

Background

Tailspin Toys manufactures and sells toys and games. The company also resells board games. The new chief executive officer (CEO) recently launched an effort to update the company's information technology (IT) infrastructure. The CEO wants a blog site to provide updates in plain text about the progress of company projects and the overall health of the company to employees. Content from this site will be used to populate some content on the internet-facing site.

You hire a consultant to design and deploy a SharePoint farm. The company plans to use the farm to create internal collaboration sites, and e-commerce site, and a place to display public announcements.

The following diagram shows the topology of the SharePoint farm:



#### General

You must create a separate site collection for each department. You must base each site collection on the Team site template. The direct URL for each site collection must use the following format:

http://departmentname.tailspin.com.

You must place the site collections for all departments in the same web application, if possible. You must place the site collection for departments that have unique requirements in separate web applications.

#### Business continuity

You identify the following requirements related to continuity of the business:

- All SharePoint services must be highly available.
- The SharePoint environment must be able to withstand the failure of a single system without affecting accessibility.

You must monitor the SharePoint environment to ensure that systems are available and that response times meet service level agreements (SLAs). In the event the times are not within the required thresholds, the system must alert SharePoint administrators. You must create a site that allows department managers to view the performance data that has been collected. The use of additional monitoring software will be performed where it can be justified.

#### Governance and security

##### Governance requirements

- Marketing department employees may create team sites. All other sites must be created by members of the information technology (IT) administration staff.
- You must handle requests for new sites by using a Help Desk site on SharePoint
- The corporate taxonomy must be managed by the SharePoint administrative staff. Users must not be allowed to create their own information architecture.

Exceptions to this requirement will be handled on a case by case basis.

- All information in SharePoint must be consistently identified and readily accessible by using searches. Search components must be configured to provide the best search results while minimizing administrative overhead.

#### Security requirements

Anonymous access is only permitted for Internet-facing sites. Authentication is required for all sites. Authentication must occur through the Active Directory Domain Services environment. All custom apps must be installed and managed by the SharePoint administrative staff. Any requests for new apps must be submitted through the Help Desk site.

#### Hardware and storage

##### Hardware requirements

You must minimize the number of servers and applications whenever possible. You must only deploy additional servers and applications if the requesting department manager provides the appropriate documentation to support the need.

##### File storage requirements

Content must not be stored in the perimeter network. All access to SharePoint content from the Internet must be handled through servers in the perimeter network. Human resources (HR) data must be kept separate from all other data.

#### HR department

The HR manager needs a website to implement time management and leave requests. The HR manager has found an app that will provide this functionality on a SharePoint independent software vendor website, and would prefer to use this app as opposed to creating a custom in-house app. This app will only need to access to data in the HR site collection.

You must create a site for the HR department that allows new employees to read required documents regarding policies and procedures. The site must also provide all employees access to other HR documentation such as the employee handbook, employee leave procedures, and acceptable use guides.

#### IT department

You must implement a Help Desk website and associated workflows. To create the site, you must access data from a Microsoft Excel workbook into a SQL Server database by using an SQL Server Integration Services (SSIS) package. You must access data from other data sources.

Employees must be able to fill out a help request on the site and then check the status of the request. The IT department staff must be able to respond to the requests, update the status of requests, and close requests. IT department managers must be able to track the status of requests, and generate reports on the progress of requests.

#### Marketing department

##### Collaboration sites

Marketing department employees must be able to create their own collaboration sites in SharePoint The collaboration sites will be used for new product release discussions and marketing plans related to those new products. The URL for the collaboration sites must use the format: /products/productname.

##### Custom terms

The marketing department must be able to use custom terms when identifying marketing strategies. Other departments must not be able to use custom terms. This requirement has been approved by management.

##### Public-facing sites

You must create a site for the marketing department that provides information to potential customers about the current product line and any products in development. The marketing team must be able to access this site by using their mobile devices.

#### Sales department

The sales manager needs a site to display sales progress data. The site must include KPIs and metrics that are generated by using information from a database stored on a SQL Server. Sales department employees are often away from the office. They must be able to access SharePoint data from external locations and when they are offline. Sales department employees need a site that customers can access to purchase products and check on the status of orders

#### NEW QUESTION 145

Note: This question is part of a series of questions that present the same scenario. Each question in the series contains a unique solution. Determine whether the solution meets the stated goals.

You need to monitor the environment.

You run the following Windows PowerShell cmdlet: Set-SPLogLevel

Does the solution meet the goal?



- A. Yes
- B. No

**Answer:** B

#### NEW QUESTION 146

Note: This question is part of a series of questions that present the same scenario. Each question in the series contains a unique solution. Determine whether the solution meets the stated goals.

You need to monitor the environment.

You configure System Center Operations Manager 2012 R2 with a web application monitor. Does the solution meet the goal?

- A. Yes.
- B. No.

**Answer:** A

#### NEW QUESTION 147

You need to monitor the environment.

You run the following Windows PowerShell cmdlet: Set-SPDiagnosticConfig

Does this solution meet the goal?

- A. Yes
- B. No

**Answer:** B

#### NEW QUESTION 148

You need to implement the Managed Metadata Service (MMS) application for the websites.

For each website, which MMS configuration option should you use? To answer, select the appropriate option from each list in the answer area.

NOTE: Each correct selection is worth one point.

### Answer Area

Website	MMS configuration option
Marketing	<div>▼</div> <ul style="list-style-type: none"> <li>a new MMS term store</li> <li>a new MMS term group</li> <li>an open term set</li> <li>a closed term set</li> </ul>
Sales	<div>▼</div> <ul style="list-style-type: none"> <li>a new MMS term store</li> <li>a new MMS term group</li> <li>an open term set</li> <li>a closed term set</li> </ul>

**Answer:**

**Explanation:**

### Answer Area

Website	MMS configuration option
Marketing	<div>▼</div> <ul style="list-style-type: none"> <li>a new MMS term store</li> <li>a new MMS term group</li> <li>an open term set</li> <li>a closed term set</li> </ul>
Sales	<div>▼</div> <ul style="list-style-type: none"> <li>a new MMS term store</li> <li>a new MMS term group</li> <li>an open term set</li> <li>a closed term set</li> </ul>

#### NEW QUESTION 150

You need to monitor the environment.

You create a performance data collector set. Does this solution meet the goal?

- A. Yes

B. No

Answer: A

NEW QUESTION 153

You need to publish the CEO blog site to the public-Internet facing site. What should you do?

- A. Configure PowerPoint Automation Services to deploy site content.
- B. Create and configure a content deployment job.
- C. Configure Word Automation Services to deploy site content.
- D. Configure Machine Translation Services to deploy site content.

Answer: B

NEW QUESTION 158

You need to deploy the web application to support the marketing department.  
Which three actions should you perform in sequence? To answer, move the appropriate actions from the list of actions to the answer area and arrange them in the correct order.

Actions

Create a teams managed path for the web application.

Enable Self-Service Site Creation for all departmental web applications.

Enable Self-Service Site Creation for the marketing department web application.

Create a products managed path for the web application.

Enable anonymous access for the web application.

Create a web application for all departments.

Create a web application for the marketing department.

Answer Area

>

<

⤴

⤵

Answer:

Explanation:

Actions

Create a teams managed path for the web application.

Enable Self-Service Site Creation for all departmental web applications.

Enable Self-Service Site Creation for the marketing department web application.

Create a products managed path for the web application.

Enable anonymous access for the web application.

Create a web application for all departments.

Create a web application for the marketing department.

Answer Area

Create a web application for the marketing department.

Create a products managed path for the web application.

Enable Self-Service Site Creation for the marketing department web application.

>

<

⤴

⤵

#### NEW QUESTION 160

You need to implement the site collection for the sales department. What should you do?

- A. In Central Administration, create a web application for the department site
- B. Then, create the sales site collection.
- C. Create a web application for the department site
- D. Then, run the following Windows PowerShell commands: New-SPWebApplication –Name “Tailspin Toys Departments” –Port 80 –Host Headerdepartments.tailspin.com –URL “http://departments.tailspin.com”-ApplicationPool “TailspinAppPool”New-SPSite ‘http://sales.tailspin.com’-HostHeaderWebApplication‘http://departments.tailspin.com’ – Name ‘Sales’ -Description ‘Sales Department Site’-OwnerAlias ‘tailspin\administrator’-Language 1033 -Template ‘STS#0’
- E. In Central Administration, create a web application for sales departmen
- F. Then, run the following Windows PowerShell commands: New-SPSite ‘http://sales.tailspin.com’-HostHeaderWebApplication‘http://Sales.tailspin.com’ – Name ‘Sales’ -Description ‘Sales Department Site’-OwnerAlias ‘tailspin\administrator’-Language 1033 -Template ‘STS#0’
- G. In Central Administration, create a web application for the sales department sites and enable Self-Service Site Creatio
- H. Then, run the following Windows PowerShell commands: New-SPSite ‘http://sales.tailspin.com’ –HostHeaderWebApplication‘http://Sales.tailspin.com’ – Name ‘Sales’-Description ‘Sales Department Site’-OwnerAlias ‘tailspin\administrator’-Language 1033 -Template ‘STS#0’

**Answer:** C

#### NEW QUESTION 165

You need to implement the Sales Progress website. Which service application should you create and configure?

- A. a Business Data Connectivity Service application
- B. an Application Management Service application
- C. the Access Service 2010 service application
- D. the PerformancePoint Service application

**Answer:** D

**Explanation:** Topic 3, Contoso LTDBackground

Contoso, Ltd. is a manufacturing company that serves the oil and gas industry. The company produces materials and chemicals that are used in the production of gasoline. Contoso has recently acquired several smaller companies including A. Datum, Litware, Inc., and Northwind Traders. Contoso has now grown from a local company to a company that has offices in multiple geographies.

The company has the following offices:

Function	Secondary function	Name	Location	Number of employees	Content size in terabytes (TB)
Corporate HQ	IT	Contoso	Dallas	500	8 TB
Finance and Acquisitions	IT	A. Datum Corporation	London	100	4 TB
Manufacturing	Trading, Finance	Litware Inc.	Beijing	50	1 TB
Trading	Finance	Northwind Traders	New York	25	2 TB
Field Employees		N/A	Various locations worldwide	100	

Corporate structure

Contoso is divided into business units based on their function primarily, and then by geographic region. The corporate language is English. Contoso has a major datacenter that is located near their Dallas facilities. A. Datum Corporation has a contract with a third-party datacenter in London, England. Contoso intends to move their environment fully to the cloud in the future, and will use SQL Databases in the cloud for business continuity.

Contoso has, up until recently, handled all collaboration between employees using a single file share, email, USB flash drives, and local storage. With a growing need for global cooperation and collaboration, Contoso has elected to implement a SharePoint environment. You must minimize the cost for the solution.

SharePoint environment

- Each businessfunctionalgroup requires a unique site collection. You must create child site collections for each geographical region that is part of the business functional group.
- The SharePoint taxonomy must follow the corporate structure.
- All existing corporate content must be migrated to the new SharePoint 2016 environment.
- The SharePoint environment must be accessible to all employees 24 hours a day, 7 days a week, and 365 days a year.

Data

- You must retain all records for compliance reasons.
- You must share sales data by using Microsoft Excel. The sales data must be available online.
- The Beijing office must be able to share information to external partners.

Employee requirements

- Employees must only use SharePoint Designer to edit SharePoint pages.
- Employees must be able to edit Excel workbooks in a browser.
- Employees must have access to PowerPivot.

Editing of SharePoint pages

Contoso has decided that they will allow employees to edit SharePoint 2016 pages only by using SharePoint Designer. Employees must edit pages in a development environment that is located in Dallas. Changes must be applied to the production environment by using a backup/restore operation on the individual site collection. The development environment is an exact replica of the production environment.

Technical requirements SharePoint requirements



You identify the following requirements for the SharePoint environment:

Backup and disaster recovery

- The environment must be backed up at all times. You must not permit the loss of more than one hour of data.
- In the event of a disaster, the SharePoint environment must remain accessible to all employees. All disaster response and recovery plans and protocols will be available from the corporate SharePoint instance. The maximum acceptable downtime for the environment is four hours.
- In the case of failure, you must be able to restore the environment to any point within three weeks before the failure.

SharePoint farm

- You must ensure that specific offices can share content with external partners.
- You must log activities related to PowerPivot in the SharePoint usage logs.
- You must implement Search services from the on-premises farm.

Deployment guidelines

You have the following guidelines and protocols for implementing the SharePoint environment:

- You must install and configure all servers in an identical way.
- You must provision all site collections by using the SPSite.Copy method at the content database level. You must use reproducible and traceable methods to provisions sites.
- You must track information about SharePoint installations in Active Directory Domain Services.
- You must specify different service accounts for each service application.
- Users in the Dallas test environment must be able to create content databases on demand.

Planned environments

You plan to implement the following environments:

Datacenter	Environment	Function	Authorization
Dallas	SharePoint2016 On-premises	Primary site	All employees
Dallas	SharePoint2016 On-premises	Test environment	IT employees
Dallas	SharePoint2016 On-premises	Development environment	Dev employees, IT employees
Denver	SharePoint Online	Test environment for Office 365	IT employees
London	SharePoint2016 On-premises	High availability and failover	All employees
Hong Kong	SharePoint Online	Collaboration for China, Trading, and Finance	All employees in China, Trading, and Finance

Groups and accounts

You must create the following groups:

Account name:	Service application/role
IT admins	Monitor SharePoint 2016 and perform user administration tasks.
SharePoint installation	Install and configure SharePoint 2016
SQL admins	Administer SQL Server and provision SQL Server databases.

You must create the following service accounts:

Account name:	Service application/role
Network service	Office Online Services
SharePoint farm	Farm administrator
SQL admin	SQL Server Service account

Monitoring and management

You must implement monitoring for the following aspects of the SharePoint solution:

- Security You must be notified if administrator accounts are used to run application pools or if the server farm account is used for other services.
  - Performance You must monitor database index fragmentation and whether the paging file size is sufficient.
  - Availability You must monitor free space on drives and receive an alert if a drive is running out of space. You must also be notified if one or more servers are not responding.
  - SharePoint page performance You must monitor the manufacturing, trading, and finance instances in Beijing for the any performance issues. You must also log attempts to connect to the instances from locations outside of the corporate network.
  - Connectivity between Office 365 and the on-premises SharePoint 2016 environment You must monitor connectivity between the two environments.
- Contoso is concerned that unauthorized users may gain access to sensitive information. You must log any attempts to access sensitive information. The company is especially interested in the logging the following actions:
- attempts to open documents that contain personal information
  - editing sensitive documents
  - printing sensitive documents

#### NEW QUESTION 169

You need to define the content database architecture. What should you create?

- A. a content database for each site collection based on business function
- B. a content database based on geography for each site collection
- C. a single content database for the entire environment
- D. a content database for each business function, with site collections based on geography

Answer: B

#### NEW QUESTION 174

You need to ensure that users can edit SharePoint pages. What should you do?

- A. Run the following PowerShell command: `$webAppObj = Get-SPWebApplication -Identity [URL]$webAppObj.AllowDesigner = $true$webAppObj.Update()`
- B. Enable SMTP connection encryption.
- C. In the System Settings section of Central Administration, convert the server role to Custom.
- D. Run the following PowerShell cmdlet: `Set-SPO365LinkSettings`

Answer: A

#### NEW QUESTION 176

How should you complete the Windows PowerShell command? To answer, select the appropriate Windows PowerShell segment from each list in the answer area.

Answer area

<div> <div></div> <div> Restore-SPSite  Restore-SPFarm  Backup-SPSite  Restore-SPDeletedSite </div> </div>	<div> <div></div> <div> -Directory  -Identity </div> </div>
--	---

Answer:

Explanation:

Answer area

<div><div></div><div>Restore-SPSite</div><div>Restore-SPFarm</div><div>Backup-SPSite</div><div>Restore-SPDeletedSite</div></div>	<div><div></div><div>-Directory</div><div>-Identity</div></div>
--	---

NEW QUESTION 177

You need to ensure that users can share sales data.

For each authentication method, which option should you use? To answer, drag the appropriate option to the correct authentication method. Each option may be used once, more than once, or not at all. You may need to drag the split bar between panes or scroll to view content.

Note: Each correct selection is worth one point.

Options	Authentication method	Option
S2S authentication	Account for Office Online Services	Option
SAML authentication	Authentication for Excel Online	Option
oData authentication	Authentication for PowerPivot	Option
network Service account		
Local Administrator account		
Authenticated users		

Answer:

Explanation:



Options	Authentication method	Option
S2S authentication	Account for Office Online Services	network Service account
SAML authentication	Authentication for Excel Online	Authenticated users
oData authentication	Authentication for PowerPivot	Authenticated users
network Service account		
Local Administrator account		
Authenticated users		

#### NEW QUESTION 182

You need to update the production environment with pages that employees update.  
 How should you complete the Windows PowerShell command? To answer, select the appropriate Windows PowerShell segment from each list in the answer area.

<input type="text"/>	<input type="text"/>
Restore-SPSite	-Directory
Restore-SPFarm	-Identity
Backup-SPSite	
Restore-SPDeletedSite	

Answer:

Explanation:

<input type="text"/>	<input type="text"/>
Restore-SPSite	-Directory
Restore-SPFarm	-Identity
Backup-SPSite	
Restore-SPDeletedSite	

#### NEW QUESTION 185

You need to create the managed paths for all site collections.  
 For each site collection, which inclusion type should you use? To answer, select the appropriate inclusion type from each list in the answer area.

Site collection	Inclusion type
Corporate	<div><div></div><div>Explicit Wildcard</div></div>
IT	<div><div></div><div>Explicit Wildcard</div></div>
Finance	<div><div></div><div>Explicit Wildcard</div></div>
Trading	<div><div></div><div>Explicit Wildcard</div></div>
Manufacturing	<div><div></div><div>Explicit Wildcard</div></div>

Answer:

Explanation:

Site collection	Inclusion type
Corporate	<div><div></div><div>Explicit Wildcard</div></div>
IT	<div><div></div><div>Explicit Wildcard</div></div>
Finance	<div><div></div><div>Explicit Wildcard</div></div>
Trading	<div><div></div><div>Explicit Wildcard</div></div>
Manufacturing	<div><div></div><div>Explicit Wildcard</div></div>

#### NEW QUESTION 188

Note: This question is part of a series of questions that present the same scenario. Each question in the series contains a unique solution that might meet the stated goals. Some question sets might have more than one correct solution, while others might not have a correct solution.

After you answer a question in this sections, you will NOT be able to return to it. As a result, these questions will not appear in the review screen.

You need to design a logical architecture for the procurement team site. You implement metadata navigation for each library.

Does the solution meet the goal?

- A. Yes
- B. No

**Answer:** B

#### NEW QUESTION 193

You implement a solution that uses a single document library. Does the solution meet the goal?

- A. Yes
- B. No

**Answer:** A

#### NEW QUESTION 196

Once you answer a question in this section, you will NOT be able to return to it. As a result, these questions will not appear in the review screen.

Note: This question is part of a series of questions that present the same scenario. Each question in the series contains a unique solution. Determine whether the solution meets the stated goals.

You need to display the values for the Document Status and Department properties. You configure variations on the site.

Does the solution meet the goal?

- A. Yes
- B. No

**Answer:** B

**Explanation:** The requirement is to change the values of metadata field settings from a single location and changes to the settings should be applied to all the site collections and existing documents. So Term Set and Managed Metadata column is the preferred way to implement the Document Status and Department properties.



#### NEW QUESTION 199

You need to configure SharePoint to support the required common document properties.  
 Which two actions should you perform? Each correct answer presents part of the solution.

- A. Activate the Metadata Navigation and Filtering feature.
- B. In each site collection, define content types and site columns.
- C. Create a site collectio
- D. Define content types and site columns.
- E. Activate the Content Type Syndication Hub feature.
- F. Create a librar
- G. Create columns and save the library as a template.

**Answer:** CD

**Explanation:** The requirement is to manage the field settings from a single place. For that, content type hub should be implemented.  
 From scenario: Every file stored within the system must contain the following common document properties:

Document Status  
 Department  
 Author  
 Enterprise Keywords

You must be able to manage file metadata settings from a single location. When you make changes to settings, the changes must be applied to site collections and existing documents. This location must not be a part of the existing marketing, HR, or procurement team sites.

#### NEW QUESTION 201

You need to complete the configuration of the Search2016 farm.

How should you complete the Windows PowerShell command? To answer, drag the appropriate Windows PowerShell segment to the correct location or locations.  
 Each Windows PowerShell segment may be used once, more than once, or not at all. You may need to drag the split bar between panes or scroll to view content.

Windows PowerShell segments	Answer Area
SPConfigurationDatabase	Connect <span>PowerShell segment</span>
ServerRole2016	-DatabaseServer <span>PowerShell segment</span>
Search	-DatabaseNameSP2016Config '
Distributed Cache	-Passphrase Company2919** '
Search2016	-LocalServerRole <span>PowerShell segment</span>
Install-SPService	
ServerRole2013	

**Answer:**

**Explanation:**

### Windows PowerShell segments

SPConfigurationDatabase

ServerRole2016

Search

Distributed Cache

Search2016

Install-SPService

ServerRole2013

### Answer Area

Connect

SPConfigurationDatabase

-DatabaseServer

ServerRole2016

-DatabaseNameSP2016Config '

-Passphrase Company2919\*\* '

-LocalServerRole

Search

#### NEW QUESTION 204

You need to configure SharePoint Server URLs to allow access to the following sites:

For each site, which feature should you configure? To answer, drag the appropriate feature to the correct site. Each feature may be used once, more than once, or not at all. You may need to drag the split bar between panes or scroll to view content.

### Features

a host header site collection

alternate access mappings

a content deployment path

service application associations

### Answer area

Site	Feature
Human Resources	Feature
Marketing team	Feature
Marketing employee	Feature
Procurement	Feature

**Answer:**

**Explanation:** As per the requirements of Case Study, HR, Marketing Team and Procurement should have a dedicated URLs for them. Hence they should be implemented as Host Header site collection. For Marketing employees, it'll be a personal site and they should be able to publish the content on Marketing team site which can be done using content deployment path.

Scenario: Each departmental site must have a separate site collection.

#### NEW QUESTION 205

You need to ensure that employees can access published marketing materials. Which feature should you configure?

- A. Promoted Links
- B. Permission levels
- C. Managed paths
- D. Durable Links

**Answer:** D

### NEW QUESTION 208

You need to configure the environment to support the needs of the procurement team. What should you create?

- A. a display template
- B. a document library template
- C. a master page
- D. a search results page

**Answer: B**

**Explanation:** From Scenario: Procurement

The procurement department uses SharePoint to store contracts and related documents. You must store these documents in as few document libraries as possible. The documents may contain precedents or terms that are relevant for reuse. The procurement site stores over 20 million documents. The term store for the site contains two million terms.

Note: The two types of libraries that use templates are document and form libraries.

Document Libraries: You use a document library to store and manage many different file types, including documents, spreadsheets, presentations, text files, and other types of files. A document library is often the most common location on a site where you can create, collect, update, and manage files with team members and share with other colleagues throughout your business or enterprise. You can use a document library as a general-purpose file repository, or you can use it for a specific purpose. For example, a marketing team may have its own document library for planning materials, news releases, and publications.

Form Libraries Incorrect:

Not A: Display templates in SharePoint are templates used in web parts that use search technology to show the results of a query made to the search index.

Display templates control which managed properties are shown in the search results, and how they appear in the web part.

References:

<https://support.office.com/en-us/article/set-a-custom-template-for-a-sharepoint-library-8e0177eb-46bd-4346-999>

### NEW QUESTION 212

In this section, you will see one or more sets of questions with the same scenario and problem. Each question presents a unique solution to the problem, and you must determine whether the solution meets the stated goals. Any of the solutions might solve the problem. It is also possible that none of the solutions solve the problem.

Once you answer a question in this section, you will NOT be able to return to it. As a result these questions will not appear in the review screen.

Note: This question is part of a series of questions that present the same scenario. Each question in the series contains a unique solution. Determine whether the solution meets the stated goals.

You need to display the values for the Document Status and Department properties. You install a language pack.

Does the solution meet the goal?

- A. Yes
- B. No

**Answer: B**

**Explanation:** The requirement is to change the values of metadata field settings from a single location and changes to the settings should be applied to all the site collections and existing documents. So Term Set and Managed Metadata column is the preferred way to implement the Document Status and Department properties.

Topic 5, Contoso LTD (B)

Overview

You are the SharePoint administrator for a manufacturing company named Contoso, Ltd. You have the following environments:

Location	Department	Main site collection	Farm version
Boston	Corporate Headquarters	<a href="http://Boston.contoso.com/sites/corp">http://Boston.contoso.com/sites/corp</a>	SharePoint 2013
Chicago	Finance	<a href="http://Chicago.contoso.com/sites/Finance">http://Chicago.contoso.com/sites/Finance</a>	SharePoint 2016
Dallas	Sales	<a href="http://Dallas.contoso.com/sites/Sales">http://Dallas.contoso.com/sites/Sales</a>	SharePoint 2016
Denver	Warehouse	<a href="http://Denver.contoso.com/sites/warehouse">http://Denver.contoso.com/sites/warehouse</a>	SharePoint 2013
Atlanta	Marketing	<a href="http://Atlanta.contoso.com/sites/Marketing">http://Atlanta.contoso.com/sites/Marketing</a>	None
Detroit	Development	<a href="http://Detroit.contoso.com/sites/Development">http://Detroit.contoso.com/sites/Development</a>	SharePoint 2016
Seattle	Information Technology	<a href="http://Seattle.contoso.com/sites/IT">http://Seattle.contoso.com/sites/IT</a>	SharePoint 2016

Each site collection uses a unique content database. Details

Dallas

You

configure a My Sites host site collection at the URL <http://Dallas.contoso.com/personal>. The Dallas site collection also hosts a web application that will be used exclusively by sales department employees for creating customer sites. Employees access the site at the URL <http://customer.contoso.com>.

Chicago

The Chicago location has a primary datacenter and a secondary datacenter. Denver

Some of the sites in the Denver site collection run in SharePoint 2010 mode. Atlanta

The Atlanta site collection is used exclusively by marketing department employees.

Detroit

The development site collection is used only by SharePoint administrators for internal testing. Seattle

The IT site collection is used by the IT department to share content with other employees. The following servers are available in the Seattle datacenter:

\* Server1 and Server5 are located in the Seattle perimeter network. End users have direct access only to these servers.

\* Server2and Server6 are optimized for high throughput.



- \* Server3 and Server7 have storage that is optimized for caching.
- \* Server4 and Server8 are not currently in use.

The servers in the Seattle datacenter are not configured for redundancy. Office 365

You have an existing Office 365 tenant. You use Azure Active Directory Connect to provision the hosted environment.

Requirements Chicago

You identify the following requirements for the Chicago office:

General requirements

- \* Chicago must remain a standalone on-premises SharePoint environment. There must be no connectivity with Office 365.

- \* You must deploy a new Office Online Server farm named oos-chi.contoso.com to the environment. This farm will be used from within the network and externally.

All connections to the Office Online Server farm must use IPSec.

Disaster recovery requirements

- \* You must use the secondary datacenter in Chicago for disaster recovery.

- \* You must be able to recover the Chicago.contoso.com SharePoint farm to the secondary datacenter. Any recovery operations must complete in less than five minutes if the primary datacenter fails.

- \* You must minimize the costs associated with deploying the disaster recovery solution. Dallas

You identify the following requirements for the Dallas office: General requirements

- \* You must configure the Dallas SharePoint farm as a hybrid environment with the Office 365 tenant.

- \* You must support OneDrive for Business, Site following, Profiles, and the Extensible app launcher.

- \* You must minimize the number of servers that you must add to the environment.

- \* You must grant users only the minimum permissions needed.

- \* You must

ensure that <http://dallas.contoso.com/personalsite> is only used for employee personal sites.

- \* Only farm

administrators are permitted to create site collections in the <http://Dallas.contoso.com> web applications. Requirements for sales department employees

- \* Sales

users must be able to create child sites under the <http://customer.contoso.com> web application.

- \* Sales users must be able to create site collections. Seattle

You must implement a new SharePoint environment. Employees in the IT department will use the environment to share content with other employees. You identify the following requirements for the Seattle office:

General requirements

- \* You must configure the farm by using MinRole.

- \* You must implement redundancy.

- \* Employees must be able to search all content in the farm. Office 365-specific requirements

Other requirements Atlanta

You must deploy a new SharePoint farm at the Atlanta office. The farm must meet the following requirements:

- \* The farm must be highly available.

- \* Operating systems must support file system encryption.

- \* Search databases must be stored on a file system that automatically repairs corrupt files.

- \* Content databases must be stored on file systems that support the highest level of scalability. Boston

You must upgrade the existing SharePoint farm to SharePoint 2016. Employees who use the farm must be able to continue using the farm during the upgrade process.

Denver

You must perform a database check before you upgrade SharePoint. SQL Server

- \* All SharePoint environments must use dedicated SQL Servers.

- \* The Atlanta SharePoint farm must use SQL Always On and a group named SP16-SQLAO.

- \* The Atlanta SQL environment must use a SQL alias named SQL. Office 365

You must use Active Directory Import to synchronize any on-premises SharePoint environments with the Office 365 tenant.

#### NEW QUESTION 216

You are planning the hybrid environment for OneDrive for Business.

You need to determine what the end-user experience will be for Dallas and Seattle SharePoint users.

What should you conclude? To answer, select the appropriate end-user experience from each list in the answer area.

End-users

OneDrive for Business Location

Dallas on-premises SharePoint users

▼

On-premises
Office 365

Seattle on-premises SharePoint users

▼

On-premises
Office 365

Dallas Office 365 SharePoint users

▼

On-premises
Office 365

Seattle Office 365 SharePoint users

▼

On-premises
Office 365

Answer:

**Explanation:** Box 1: On-premises

You must configure the Dallas SharePoint farm as a hybrid environment with the Office 365 tenant. Box 2: Office 365

Seattle: You must implement a new SharePoint environment. Box 3: Office 365

You must configure the Dallas SharePoint farm as a hybrid environment with the Office 365 tenant. Box 4: Office 365

Seattle: You must implement a new SharePoint environment.

NEW QUESTION 220

You need to upgrade the SharePoint 2013 corporate farm.

Which four actions should you perform in sequence? To answer, move the appropriate actions from the list of actions to the answer area and arrange them in the correct order.

## Actions

## Answer Area

Upgrade the site collections.

Change the Denver farm databases to read only and then back up the Denver databases.

Change the Boston farm databases to read only and then back up the Boston databases.

Create a new SharePoint 2016 farm and copy over the Denver databases from backups.

Create a new SharePoint 2016 farm and copy over the Boston databases from backups.

Attach the upgrade the databases.

### Answer:

**Explanation:** Scenario: Boston. You must upgrade the existing SharePoint farm to SharePoint 2016. Employees who use the farm must be able to continue using the farm during the upgrade process.

To upgrade from Microsoft SharePoint Server 2013 with the March 2013 Cumulative Update to SharePoint Server 2016, you use the database-attach method. In the database-attach method, you first create and configure a SharePoint Server 2016 farm. Then you copy the content and service application databases from the SharePoint Server 2013 with the March 2013 Cumulative Update farm, and then attach and upgrade the databases. This upgrades the data to the new version. Site owners can then upgrade individual site collections.

References: <https://docs.microsoft.com/en-us/sharepoint/upgrade-and-update/overview-of-the-upgrade-process>

### NEW QUESTION 222

You need to ensure that sales department users can create sites.

You enable Self-Service Site Creation for the <http://Dallas.contoso.com/personal> web collection. Does the solution meet the goal?

- A. Yes
- B. No

**Answer:** B



**Explanation:** You should grant the Sales department to create personal sites in the <http://Dallas.contoso.com/personal> site collection.

#### NEW QUESTION 226

You need to ensure that sales department users can create sites.

You grant sales department users permissions to create personal sites in the <http://Dallas.contoso.com/personal> site collection. Does the solution meet the goal?

- A. Yes
- B. No

**Answer:** A

#### NEW QUESTION 229

You need to ensure that sales department users can create sites.

You grant sales department users the Full Control permission for the <http://Dallas.contoso.com/sites/Sales> site. Does the solution meet the goal?

- A. Yes
- B. No

**Answer:** B

**Explanation:** Wrong URL. Sales users must be able to create child sites under the <http://customer.contoso.com> web application.

#### NEW QUESTION 232

You need to configure hybrid OneDrive for Business permissions for sales users.

How should you configure the environment? To answer, select the appropriate option from each list in the answer area.

NOTE: Each correct selection is worth one point.

**Farm**

Dallas.contoso.com  
 Chicago.contoso.com

**Action**

enable  
 disable

**Permission 1**

Create personal site  
 Create Subsites

**Permission 2**

Follow People and Edit Profile  
 Browse Directories

**Answer:**

**Explanation:** Scenario:

You must support only OneDrive for Business and Profiles.

Requirements for sales department employees

Sales users must be able to create child sites under the <http://customer.contoso.com> web application.

Sales users must be able to create site collections.

#### NEW QUESTION 235

You need to implement a recovery option for the Chicago SharePoint farm. Which recovery option should you use?

- A. Create a new farm and restore from backup after the primary farm goes offline.
- B. Implement multiple SharePoint Servers at the primary datacenter.
- C. Implement warm standby datacenter recovery.
- D. Implement a failover farm in the standby datacenter that assumes operations immediately after the primary farm goes offline.

**Answer: C**

**Explanation:** In a warm standby disaster recovery scenario, you create a warm standby environment by creating a duplicate farm at the alternate data center and ensure that it is updated regularly by using full and incremental backups of the primary farm.

Warm standby. A secondary data center that can provide availability within minutes or hours. Scenario: Disaster recovery requirements

You must use the secondary datacenter in Chicago for disaster recovery.

You must be able to recover the Chicago.contoso.com SharePoint farm to the secondary datacenter. Any recovery operations must complete in less than five minutes if the primary datacenter fails.

You must minimize the costs associated with deploying the disaster recovery solution. References:

<https://docs.microsoft.com/en-us/sharepoint/administration/plan-for-disaster-recovery>

#### NEW QUESTION 236

You need to configure Office Online Server integration for Chicago.

How should you complete the Windows PowerShell commands? To answer, select the appropriate Windows PowerShell segment or value from each list in the answer area.

-ServerName	
New-SPWOPIBinding	Chicago.contoso.com
New-SPOPISuppressionSetting	oos-chi.contoso.com
Set-SPOWPIBinding	

-zone	
Set-SPWOPIZone	"external-http"
Set-SPWOPIBinding	"internal-http"
	"external-https"
	"internal-https"

**Answer:**

**Explanation:** Box 1: New-SPWOPIBinding

From the SharePoint 2016 Management Shell, run the following commands to register a new WOPI Binding for the Office Online Server and allow authentication over HTTP connections:

New-SPWOPIBinding -ServerName <Office Online Server FQDN> -AllowHTTP Set-SPWOPIZone -zone internal-http

Etc.

Box 2: oos-chi.contoso.com

Scenario: You must deploy a new Office Online Server farm named oos-chi.contoso.com to the environment. This farm will be used from within the network and externally. All connections to the Office Online Server farm must use IPsec.

Box 3: Set-SPWOPIZone

From the SharePoint 2016 Management Shell, run the following commands to register a new WOPI Binding for the Office Online Server and allow authentication over HTTP connections:

New-SPWOPIBinding -ServerName <Office Online Server FQDN> -AllowHTTP Set-SPWOPIZone -zone internal-http

Etc.

Box 4: internal-http

References:

<https://social.technet.microsoft.com/Forums/en-US/9e10903f-9311-4926-8bbb-89a275f5ded1/how-to-install-off>

#### NEW QUESTION 238

You need to upgrade the SharePoint farm for warehouse users. Which Windows PowerShell cmdlet should you run first?

- A. Mount-SPContentDatabase
- B. Test-SPContentDatabase
- C. Convert-SPWebApplication
- D. Test-SPSite

**Answer: A**



**Explanation:** Scenario: Boston: You must upgrade the existing SharePoint farm to SharePoint 2016. Employees who use the farm must be able to continue using the farm during the upgrade process.  
 The Mount-SPContentDatabase cmdlet attaches an existing content database to the farm. If the database being mounted requires an upgrade, this cmdlet will cause the database to be upgraded.  
 The default behavior of this cmdlet causes an upgrade of the schema of the database and initiates upgraded builds for all site collections within the specified content database if required. To prevent initiation of upgraded builds of site collections, use the NoB2BSiteUpgrade parameter. This cmdlet does not trigger version-to-version upgrade of any site collections.

#### NEW QUESTION 240

You need to implement the server environment for Seattle.

Where should you deploy the server roles? To answer, drag the appropriate server or servers to the correct roles. Each server or set of servers may be used once, more than once, or not at all. You may need to drag the split bar between panes or scroll to view content.

Server or Servers	Role	Server or servers
Server1 only	Front-end	Server or Servers
Server3 only		
Server1 and Server5	Application	Server or Servers
Server3 and Server7		
Server2 only	Distribution Cache	Server or Servers
Server4 only	Search	Server or Servers
Server2 and Server6		
Server4 and Server8		

**Answer:**

**Explanation:**

Server or Servers	Role	Server or servers
Server1 only	Front-end	Server1 and Server5
Server3 only		
Server1 and Server5	Application	Server2 and Server6
Server3 and Server7		
Server2 only	Distribution Cache	Server3 and Server7
Server4 only	Search	Server2 and Server6
Server2 and Server6		
Server4 and Server8		

#### NEW QUESTION 241

You need to ensure that sales department users can create site collections. You run the following Windows PowerShell commands:

```
$w
= Get-SPWebApplication http://customer.contoso.com
$w.SelfServiceSiteCreationEnabled=$True
$w.Update()
```

Does the solution meet the goal?

- A. Yes
- B. No

**Answer: A**

#### NEW QUESTION 244

You need to plan the Atlanta farm deployment.

Which file systems should you use? To answer, select the appropriate file system from each list in the answer area.



Answer Area

Component

File System

Operating System

▼

NTFS

ReFS

Search database

▼

NTFS

ReFS

Content database

▼

NTFS

ReFS

Answer:

Explanation:

Answer Area

Component

File System

Operating System

▼

NTFS

ReFS

Search database

▼

NTFS

ReFS

Content database

▼

NTFS

ReFS

NEW QUESTION 249

.....

## THANKS FOR TRYING THE DEMO OF OUR PRODUCT

Visit Our Site to Purchase the Full Set of Actual 70-339 Exam Questions With Answers.

We Also Provide Practice Exam Software That Simulates Real Exam Environment And Has Many Self-Assessment Features. Order the 70-339 Product From:

<https://www.2passeasy.com/dumps/70-339/>

## Money Back Guarantee

### 70-339 Practice Exam Features:

- \* 70-339 Questions and Answers Updated Frequently
- \* 70-339 Practice Questions Verified by Expert Senior Certified Staff
- \* 70-339 Most Realistic Questions that Guarantee you a Pass on Your FirstTry
- \* 70-339 Practice Test Questions in Multiple Choice Formats and Updatesfor 1 Year