

101-01 Dumps

Riverbed Certified Solutions Associate

<https://www.certleader.com/101-01-dumps.html>



NEW QUESTION 1

Which SteelHead Mobile feature can dynamically disable client optimization when in an office equipped with a local SteelHead?

- A. Location Awareness
- B. Data store synchronization
- C. Fixed-target rules
- D. Branch WarmingE, Connection Forwarding

Answer: A

Explanation: Location awareness enables SteelHead Mobile to detect that it is in a branch office with a SteelHead, and it enables the SteelHead to optimize SteelHead Mobile traffic.

NEW QUESTION 2

Which ethernet network cable type does Riverbed strongly recommend you use when connecting your SteelHead appliance to a switch when all ports are set to auto negotiation?

- A. Straight
- B. It doesn't matter
- C. Crossover

Answer: A

Explanation: References: <https://support.riverbed.com/bin/support/static/aeohu4i9e68gucosmn6rcsvr1g/html/i38d87tifjq6og6l6i8c1s8m4n>

NEW QUESTION 3

When optimizing MAPI, it's important that ALL sessions between client and server are optimized by the same SteelHeads. If a SteelHead goes into admission control that could mean some sessions are passed through. What can you configure to protect against this?

- A. Disable admission control on the client side SteelHead.
- B. Reduce the keep-alive for MAPI sessions.
- C. Configure alerts to be sent when the SteelHead nears admission control.
- D. MAPI based admission control can be used.

Answer: C

Explanation: Example: Issue: Outlook clients are experiencing issues with connectivity through the Riverbed Steelhead Appliance.

Solution: Outlook can open multiple connections to an Exchange server, and Outlook can break if some connections are optimized while others are not, and these situations can occur when the Steelhead reaches Admission Control. RiOS 6.1 has implemented new "MAPI-specific admission control" alarm which is meant to prevent MAPI connections from breaking or hanging if approaching that threshold.

Note: The MAPI protocol uses several TCP sessions between the client and the server.

When doing Latency Optimization on the MAPI protocol, all these TCP sessions between that client and that server need to be optimized between the same two Steelhead appliances.

When one of the Steelhead appliances is close to admission control, there is a chance that not all these TCP sessions will become optimized, with a bad result for the client.

To overcome this possibility, you can configure the Steelhead appliance to not do MAPI Latency Optimization when it is close to admission control.

References:

http://h20564.www2.hp.com/hpsc/doc/public/display?docId=emr_na-c02948720&lang=en-us&cc=us

NEW QUESTION 4

Clients connect to which interface on the SteelCentral Controller for SteelHead Mobile?

- A. Primary or aux
- B. Primary only
- C. Inpath0_0 only
- D. Aux only

Answer: C

Explanation: The InPath0_0 interface is used for optimized data transmission. It is used for client connect

NEW QUESTION 5

Which SteelHead optimization feature provides layer 7 acceleration?

- A. MXTCP
- B. SDR
- C. LZ
- D. Optimization blades
- E. HSTCP

Answer: D

Explanation: Blade optimization is done at layer 7.

NEW QUESTION 6

Looking at the figure, could we say if the connection is optimized by SH SaaS?

	CT	Notes	Source:Port	Destination:Port	LAN kB	WAN kB	Reduction	Start Time	Application
			172.16.38.204:9657	132.245.229.178:443	936	361	61%	2014/10/17 23:48:29	MAPI-0A
			172.16.38.204:9658	132.245.229.178:443	48,166	341	99%	2014/10/17 23:48:29	MAPI-0A

- A. Yes, because we see the Cloud icon in the notes Section.
- B. N
- C. You must look in the connection details.
- D. N
- E. Although 132.245.229.178 is a Microsoft address the optimization could be happening through a Cloud SH and not SH SaaS.

Answer: C

NEW QUESTION 7

You have a SteelHead with paths over a public and a private network. You want to encrypt the traffic which goes via the public network. Which are the relevant SteelHead configuration requirements? (Choose two.)

- A. The peer SteelHead must be marked as a Cloud SteelHead in the local SteelHead peering table.
- B. The network must be set to 'public' by ticking the 'Public Network' box in the configuration.
- C. A SteelCentral Controller for SteelHead must be used to push the secure transport configuration.
- D. The In-Path IP address of the SteelHead must be in public address space.

Answer: B

Explanation: B: Because secure transport was built taking hybrid networking into account, you can configure a private and public IP address. The public IP address relies on reachability over a network marked Public. This configuration allows the controller to first be reached over the private network and then the public network.

NEW QUESTION 8

When optimizing SSL, trust is established between which hosts? (Select three.)

- A. Client side SteelHead and server-side SteelHead
- B. Client side SteelHead and server
- C. Server-side SteelHead and server
- D. Client PC and server-side SteelHead

Answer: ABC

Explanation: References:

<https://support.riverbed.com/bin/support/static/lrj6rq1evg0fnm7pekuq3j2md1/html/vte4p5uj2dkg9k1ukjv82835>

NEW QUESTION 9

What is required for CIFS prepopulation to succeed?

- A. The SteelHead must be joined to the domain.
- B. The connection from the client-side SteelHead Aux interface must be optimized by the client-side SteelHead.
- C. The connection from the client-side SteelHead primary interface must be optimized by the client-side SteelHead.
- D. It must have enough PFS disk space to store the entire server share.

Answer: C

Explanation: You configure prepopulation only on the client-side SteelHead. You must configure and connect the client-side SteelHead primary interface properly for prepopulation to work. The primary interface must be able to establish connection with the server. References: <https://support.riverbed.com/bin/support/static/lrj6rq1evg0fnm7pekuq3j2md1/html/vte4p5uj2dkg9k1ukjv82835>

NEW QUESTION 10

A SteelHead appliance can be configured to send email to alert administrators of alarms and other events. Where is this done in the web interface?

- A. Administration > Announcements

- B. Administration > Email
- C. Administration > Alarms
- D. Administration > Logging

Answer: C

Explanation: References:

<https://support.riverbed.com/bin/support/static/oc1r4qa2pks6172bsj6fte42p4/html/dhatalm0otkq7neeb7h9e9dl8j>

NEW QUESTION 10

A SteelHead in the datacenter is a server side out-of-path mode. What will the source IP address of the client be, as seen by the server?

- A. The client's real IP address
- B. The client's SteelHead in-path IP address
- C. The server-side SteelHead Primary IP address
- D. The server-side SteelHead in-path IP address

Answer: C

Explanation: References:

<https://support.riverbed.com/bin/support/static/a1rkfcik73lqpk3ii1qs6rgsjj/html/b4molvjchlgg2lknt0so321tgs/sh>

NEW QUESTION 13

When optimizing protocols such as signed SMB or encrypted MAPI, which of the following is true?

- A. Special configuration is always necessary on the Domain Controller.
- B. The server-side SteelHead must be joined to the domain.
- C. The domain administrator password must be made available to the SteelHead.
- D. The client-side SteelHead must be joined to the domain.

Answer: B

Explanation: The server-side Steelhead appliance must be joined to the Windows Domain in order to Enable SMB Signing or to enable encrypted MAPI.

NEW QUESTION 18

A server side SteelHead deployment is to be out-of-path (SSOOP).

Which of the below are limitations compared to physical or virtual in-path? (Choose two.)

- A. Auto discovery is not supported.
- B. Port or full transparency is not supported.
- C. Only one SteelHead is supported on the server side.
- D. Data store synchronization is not possible.
- E. Only enhanced auto discovery can be used.

Answer: AC

Explanation: A: OOP configuration does not support auto-discovery. You must create a fixed-target rule on the clientside Steelhead.

C: An out-of-path deployment is generally located on the server-side and is often described as a server-side outof-path deployment.

In an out-of-path deployment, only a SteelHead primary interface is required to connect to the network. The SteelHead can be connected anywhere in the LAN. An out-of-path SteelHead deployment does not have a redirecting device. You configure fixed-target in-path rules for the client-side SteelHead. The fixed-target in-path rules point to the primary IP address of the out-of-path SteelHead. The out-of-path SteelHead uses its primary IP address when communicating to the server. The remote SteelHead must be deployed either in a physical or virtual in-path mode.

NEW QUESTION 19

By default, when a SteelHead fails, either by power loss or optimization service failure, the appliance:

- A. Blocks all traffic.
- B. Routes all traffic.
- C. Passes through all traffic.

Answer: C

NEW QUESTION 20

With a server-side Interceptor deployment, once a TCP handshake has been completed between the server-side SteelHead and the server, how will data packets sent from the server get forwarded to the server-side SteelHead?

- A. Destination NAT is performed on the Interceptor, changing the destination IP adress from the client IP to the SteelHead's IP.
- B. The server sees the IP address of the SteelHeads in-path interface as its client, so there is no need for the Interceptor to forward it.
- C. They are GRE-encapsulated by the Interceptor, and forwarded using the SteelHead IP.
- D. The Interceptor tunnels them over the connection using port 7850 to the SteelHeads.
- E. The Interceptor applies the MAC address of the SteelHead's in-path interface and forwards at layer 2.

Answer: A

Explanation: Once the initial handshake is completed, the interceptor use destination NATs packets to the steelhead so you will not see this traffic if you are filtering on the original client and server address.

References: <https://splash.riverbed.com/thread/5512>

NEW QUESTION 24

The auto-discovery probe uses which TCP option number (in decimal)? (Hint: Use the calculator)

- A. 78
- B. 76
- C. 66
- D. Auto-discovery does not use TCP options

Answer: B

NEW QUESTION 26

What does "Branch managed" mean when adding a SteelHead to the SteelCentral Controller for SteelHead (SCC) inventory?

- A. This SteelHead is fully managed by the SCC.
- B. This SteelHead has SteelFusion capability.
- C. Another SCC as well as this one manages this SteelHead.
- D. This SteelHead supports DNS caching and/or RSP or VSP policies.
- E. The SteelHead is not under control of the SC
- F. Only reports and status information are available.

Answer: E

Explanation: Branch managed specifies the appliance is managed individually at the branch office. You cannot manage this SteelHead from the SCC.

References:

SteelCentral Controller for SteelHead, User's Guide, Version 9.0, December 2014 , page 113

https://support.riverbed.com/download.htm?product_name=cmc&did=5k0kbbt7ggkok5d94jgl026go6&public=tr

NEW QUESTION 27

Which ethernet network cable type can you use when connecting your SteelHead appliance to a switch when all ports are hard coded to 100/FULL?

- A. Crossover
- B. It doesn't matter
- C. Straight

Answer: C

Explanation: To connect a Steelhead appliance to a switch use a straight-through cable. Note: Make sure that you have connected your cables as follows:

References:

Steelhead Appliance Installation and Configuration Guide, Version 7.0.3, May 2012, page 46 <https://support.riverbed.com/bin/support/download?did=614>

NEW QUESTION 29

A service provider would like to implement multi-tenanting on a SteelCentral Controller for SteelHead (SCC) such that the customers would be able to run their own reports. Which of the following are true?

- A. SCC does not support multi-tenanc
- B. A virtual or physical SCC would need to be provisioned for each customer.
- C. The SSL certificate for SCC management would need to be distributed to the customers.
- D. RADIUS or TACACS+ would need to be used to offload the authentication to achieve the privileges required.
- E. HTTP server should be disabled for the web UI and only SSL used.
- F. Each customer would have to be configured with privileges for their own SteelHeads and no others.

Answer: A

Explanation: Controller-v is a virtualized appliance of the SteelCentral Controller for SteelHead specifically designed for customers (such as Managed Service Providers) and users who need to centrally manage multiple, separate deployments of the Riverbed system on behalf of their customers.

References:

SteelCentral Controller for SteelHead (Virtual Edition), Installation Guide, Version 9.0, December 2014, page 5

<https://support.riverbed.com/bin/support/download?did=4923qri51etb3sc1ejqk76bauo>

NEW QUESTION 33

With RiOS v9.0 and later, what does a 'topology' consist of? (Choose three.)

- A. Uplinks
- B. Networks
- C. Services
- D. Applications
- E. Sites

Answer: ABE

Explanation: The topology consists of the network, the sites, and the uplinks to the network for the sites. References:
Riverbed Command-Line Interface, Reference Manual, April 2015 (page 453) <https://support.riverbed.com/bin/support/download?did=okk799647eeafskshi2utcul45>

NEW QUESTION 34

What is the command to return a Steelhead appliance back to factory defaults?

- A. (config) # restart factory reload
- B. (config) # reload factory
- C. (config) # restart clean
- D. (config) # reload clean empty
- E. (config) # reset factory reload

Answer: E

NEW QUESTION 36

What basic configuration steps should be done on the SteelHead before attempting to join it to a Windows Domain? (Choose two.)

- A. Configure either a Delegation or Replication user.
- B. Configure DNS to include an entry for resolution of the SteelHead primary interface IP address.
- C. Enable SMB signing/Encrypted MAPI support.
- D. Enable NTP and ensure time is synced with domain controllers.

Answer: BD

Explanation: When joining a Steelhead appliance to the Windows Domain, several prerequisites need to be configured to ensure smooth integration. The server-side Steelhead appliance must be able to successfully lookup its hostname in the DNS architecture. Ensure proper DNS entries are created in the DNS server(s) (only an "A record" is required) and the proper DNS servers are configured in the Steelhead appliance. The date and time of the server-side Steelhead appliance must be synchronized with the Windows Domain Controller. This is best accomplished by configuring the Steelhead to use the same NTP server as all the other servers in the domain. You must know the fully-qualified domain name. References:
Riverbed White Paper, Optimization in a Secure Windows Environment, page 14 <https://splash.riverbed.com/docs/DOC-4661>

NEW QUESTION 39

Which statement about virtual SteelHead is NOT true?

- A. It supports Quality of Service and Path Selection.
- B. It can fail to wire using VMware direct bypass feature from ESX 5.0 when utilising a Riverbed hardware bypass card.
- C. It only supports one in-path interface and must be deployed virtually in-path.
- D. It can perform auto discovery in an in-path deployment.
- E. It can perform auto discovery in a virtual in-path deployment.

Answer: C

Explanation: Out-of-Path Deployment is possible. For a virtual out-of-path (OOP) deployment, connect the primary interface to the physical in-path NIC to be used, and configure the router to forward traffic to this NIC. You must also enable OOP on Virtual Steelhead. References:
Virtual Steelhead Installation Guide, Version 1.0 (RiOS v7.0.3), July 2012, page 13 <https://support.riverbed.com/bin/support/download?did=624>

NEW QUESTION 42

SteelCentral Controller for SteelHead (SCC) can be configured with the topology of the network, to include subnets and paths. This topology information is used for which SteelHead functions? (Choose three.)

- A. Profiler export
- B. Quality of Service bandwidth allocation
- C. Subnet side rules
- D. Secure Transport
- E. Path Selection

Answer: ACE

NEW QUESTION 44

What files can be gathered from the SteelHead which would be useful for troubleshooting problems with QoS configuration? (Choose two.)

- A. TCP Dump
- B. System Dump
- C. Core Dump
- D. Process Dump

Answer: AB

Explanation: TCP Dump can be used to analyze QoS protocol traffic. The System Dump Analyzer helps you investigate system dumps to identify potential problems with your Steelhead appliances and Riverbed configuration. Simply

upload a system dump and view the results.

References: <https://support.riverbed.com/content/support/help.html>

NEW QUESTION 45

Connection forwarding without multi-interface support uses which interface for communication?

- A. Wan0_0
- B. Remote
- C. Primary or Aux
- D. Lan0_0
- E. Inpath0_0

Answer: E

Explanation: References:

<https://support.riverbed.com/bin/support/static/oc1r4qa2pks6172bsj6fte42p4/html/dhatalm0otkq7neeb7h9e9dl8j>

NEW QUESTION 50

Data store synchronization takes place over which interface or interfaces?

- A. Primary or Aux
- B. Wan0_0
- C. Remote
- D. Inpath0_0
- E. Lan0_0

Answer: A

Explanation: The traffic for RiOS data store synchronization is transferred through either the Steelhead appliance primary or auxiliary network interfaces, not the in-path interfaces.

References:

Steelhead Appliance Deployment Guide Including the Steelhead Mobile Controller, December 2013, page 15

<https://support.riverbed.com/bin/support/download?did=a53locldv9s5oc0agjp851iol>

NEW QUESTION 55

The SteelHead Admission Control feature activates when: (choose two)

- A. The data store has reached full capacity
- B. Throughput exceeds the licensed limit of the appliance
- C. Total connections exceeds the licensed limit of the appliance
- D. Optimization service memory exceeds the limit of the appliance
- E. Optimized connections exceed the licensed limit of the appliance

Answer: BE

Explanation: Note: Admission Control is a validation process in communication systems where a check is performed before a connection is established to see if current resources are sufficient for the proposed connection.

References:

http://h20564.www2.hp.com/hpsc/doc/public/display?docId=mmr_kc-0125647

NEW QUESTION 60

What is the default data store size for a SteelHead Mobile Client?

- A. 1 GB
- B. 5 GB
- C. 10 GB
- D. 20 GB

Answer: C

Explanation: The Data Store Size. A minimum size of 256 MB is required for the data store. The default value is 10 GB. References:

Steelhead Mobile Controller Installation Guide, Version 4.0.3, October 2013, page 29

<https://support.riverbed.com/bin/support/download?did=9ce96i5pn3ota0bp3gkghu4fml>

NEW QUESTION 64

In the CLI, how would you clear the data store on a SteelHead?

- A. Datastore clean
- B. Restart clean
- C. Reboot clean
- D. Datastore wipe clean

Answer:

B

Explanation: References:

<https://support.riverbed.com/bin/support/static/5dmuo8qo6ci1inmbo174n3234j/html/iiteb5endqjlbm8a7d9l6pim>

NEW QUESTION 67

You want to ensure connections for a certain application are always optimized, and are forced to reconnect in the event that the SteelHead optimization service is restarted. Where can you configure this?

- A. Create a specific in-path rule for this application, and enable auto kickoff.
- B. Configure an 'application definition' for the application, and place it in an application group where kickoff is applied.
- C. Enable 'Reset Existing Client Connections on Start Up' in the general service settings.
- D. Create an 'application definition' for the application and select 'enable kickoff' in the application properties.

Answer: C

NEW QUESTION 72

What is the definition of an 'endpoint' in a SteelHead Mobile deployment?

- A. A network interface on a SteelHead Mobile client computer
- B. The data store on a SteelHead Mobile client computer
- C. A SteelHead client computer
- D. SteelCentral Controller for SteelHead Mobile

Answer: C

Explanation: References:

<https://support.riverbed.com/bin/support/static/j8etrrvdlj3thqu6l24c7j4ilv/html/frdn4thkhr2cklif5ihcdjoqpn/shm>

NEW QUESTION 74

Which authentication methods are available to secure the SteelHead appliance? (Choose three.)

- A. Kerberos
- B. RADIUS
- C. Local password database
- D. TACASS+
- E. NTLM

Answer: BCD

Explanation: You can log in to a SteelHead with a RADIUS or TACACS+ authentication system for administrative and monitoring purposes. The following methods for user authentication are provided with the SteelHead:

References: <https://support.riverbed.com/bin/support/static/fbunsuu0632vi3jrspe0evbko9/html/u2pi6l52l4drmhq3uhck9tu7h>

NEW QUESTION 75

What is the role of the SteelCentral Controller for SteelHead Mobile?

- A. It is an optimization peer and the SteelCentral Controller for SteelHead manages the clients.
- B. It manages the SteelHead Mobile clients only.
- C. It manages and is an optimization peer for the SteelHead Mobile clients.
- D. It is an optimization peer for the SteelHead Mobile clients only.

Answer: C

Explanation: SteelHead Mobile is a great way to give application acceleration and optimization to mobile laptops and remote desktops. And to manage all those far-flung SteelHead Mobile deployments, turn to SteelCentral Controller for SteelHead Mobile. It's got everything you need to manage your deployment.

References:

<http://www.riverbed.com/se/products/steelhead/steelhead-steelcentral-controller-for-steelhead-mobile.html>

NEW QUESTION 78

What happens to path selection if the optimization service is stopped on the local SteelHead?

- A. Path selection will continue to work as it does not rely on the optimization service.
- B. Path selection will no longer apply and the traffic will follow its default route.
- C. Path selection will continue to work but with default rules.
- D. Path selection will continue to work as normal, but QoS will no longer be active.

Answer: A

Explanation: References:

https://www.riverbed.com/document/fpo/RVRBD_FeatureBrief_RiOs_PathSelection_v3.pdf

NEW QUESTION 82

When optimizing certain application protocols such as business continuity /data replication (BCDR) and Virtual Desktop Infrastructure (VDI), Riverbed often recommends the careful use of which network congestion algorithm?

- A. MXTCP
- B. SkipWare
- C. Bandwidth Estimation
- D. HSTCP

Answer: A

Explanation: Using Riverbed's unique MX-TCP functionality, combined with its Hierarchical Fair Service Curve (HSFC) QoS technology, users are simultaneously guaranteed bandwidth for their virtual desktop connections and some of the latency impact is mitigated. The results below show operational improvements for particularly common user actions; results will certainly vary based on use case and network design.

NEW QUESTION 86

Which Simplified Routing mode is required when a Virtual SteelHead is deployed in a virtual in-path configuration?

- A. All
- B. None
- C. Destination Only
- D. Destination and Source

Answer: B

Explanation: The None option is required for virtual in-path deployments.

References:SteelheadAppliance Deployment Guide, Including the Steelhead Mobile Controller, December 2013, page 194

NEW QUESTION 89

What is the CLI command for starting the Configuration Wizard?

- A. # configuration wizard start
- B. (config) # configuration jump-start
- C. # configuration start
- D. (config) # wizard start
- E. restart clean

Answer: B

NEW QUESTION 93

When configuring optimization for an SSL web application server, which additional configuration steps are required on the SteelHead from a default configuration? (Choose three).

- A. Create a trust relationship between the SteelHeads.
- B. Install the SSL server certificate and key or proxy server certificate on the server side SteelHead.
- C. Create an in-path rule on the client side SteelHead.
- D. Install a proxy server certificate on the client side SteelHead.
- E. Enable HTTP optimization on both SteelHeads.

Answer: ABC

Explanation: References: <https://support.riverbed.com/bin/support/static/lrj6rq1evg0fnm7pekuq3j2md1/html/vte4p5uj2dkg9k1ukjv82835>

NEW QUESTION 96

How does the SteelHead monitor path availability in Path Selection?

- A. Path availability is not monitored until traffic is sent over that pat
- B. Then the SteelHead uses standard TCP timeouts to monitor path integrity.
- C. The SteelHead uses ICMP ping to monitor path availability.
- D. The SteelHead creates an inner channel on each path and keep-alive packets are used to track availability.
- E. UDP keep-alives are periodically sent across each pat
- F. If a SteelHead does not receive two of these within a pre-defined timeout period, the path is declared down.

Answer: B

Explanation: RiOS 8.5 path selection technology provides the ability to deterministically re-direct select traffic and application flows through alternate WAN routes based on service metrics, such as path availability and priority.

Availability is determined by whether the host at the remote end of a path can be reached via endto-end Internet Control Messaging Protocol (ICMP):

References:

<http://www.riverbednews.com/2013/08/path-selection-what-you-need-to-get-started/>

NEW QUESTION 100

Which Riverbed products can be managed by the SteelCentral Controller for SteelHead? (Choose six.)

- A. SteelFusion Core
- B. SteelHead
- C. SteelCentral AppResponse
- D. SteelFusion Edge
- E. SteelHead EX
- F. SteelCentral NetProfiler
- G. SteelCentral Controller for Mobile
- H. SteelHead Interceptor

Answer: ABDEGH

Explanation: The SteelCentral Controller (SCC) supports monitoring only for SteelFusion Core 4.0 and later. SCC 9.2 supports configuration and monitoring for SteelHead CX 8.6 and later.

SCC supports monitoring and partial configuration for SteelFusion Edge 4.0 and later. SCC 9.2 supports configuration and monitoring for SteelHead EX 3.0 and later.

SCC 9.2 supports monitoring only for SteelHead Mobile 4.0 and later.

SCC 9.2 supports configuration and monitoring for SteelHead Interceptor 3.x and later. References:

SteelCentral Controller for SteelHead User's Guide, Version 9.2, May 2016, page 19

<https://support.riverbed.com/bin/support/download?did=oksf8h0os0pck6pv42smvag77t&version=9.2.1>

NEW QUESTION 103

You have recently upgraded from a CX 555 to a CX 1555 for additional capacity. How would you migrate the data store from the old to the new model?

- A. Configure data store synchronization between the two appliances.
- B. Move the disks into the new appliance and power on.
- C. Use the SteelCentral Controller for SteelHead External Backup feature to backup the store to an external server and then restore it to the new appliance.
- D. It is not possible to synchronize two differently sized data stores.

Answer: C

Explanation: External SCC Backups and High Availability

The SCC stores SteelHead backups. The SCC can back up its own configuration (which includes the configurations of the SteelHeads) to an external file server (NFS, SSH, or CIFS).

NEW QUESTION 106

Packet mode optimization supports which types of in-path rules?

- A. Full Transparency Fixed-target
- B. Correct Addressing Auto Discovery
- C. Full Transparency Auto Discovery
- D. Correct Addressing Fixed-target

Answer: D

Explanation: References:

<https://support.riverbed.com/bin/support/static/fbunsuu0632vi3jrspe0evbko9/html/u2pi6l52l4drmhq3uhck9tu7h>

NEW QUESTION 109

Manually moving an entry from the SSL grey list to the white list on a SteelHead enables trust between which hosts?

- A. Client-side SteelHead and server-side SteelHead
- B. Client PC and server-side SteelHead
- C. Client-side SteelHead and server
- D. Server-side SteelHead and server

Answer: A

Explanation: The Riverbed SSL solution optimizes data transfers that are encrypted using SSL, provided that SteelHeads are deployed locally to both the client-side and server-side of the network.

Note: Secure Peering Using the Self-Signed Peer White, Gray, and Black Lists

You can use peering lists to configure peer certificates on SteelHeads running RiOS 5.0 or later. When SSL optimization is enabled, and an optimizable SSL connection is attempted across the SteelHeads, the remote peer is detected and its peering certificate is automatically populated into the self-signed peer gray list. The connection remains unoptimized because the remote peer is listed in the self-signed peer gray list.

You can examine the peer certificate for authenticity and move any peer from the gray list to either the white list or the black list. If you trust the remote peer, move it into the self-signed peer white list to begin optimizing the SSL connection. If you do not trust the remote peer, move it into the self-signed peer black list to prevent the SSL connection from being optimized.

References: <https://support.riverbed.com/bin/support/static/lrj6rq1evg0fnm7pekuq3j2md1/html/vte4p5uj2dkg9k1ukjv82835>

NEW QUESTION 114

Simplified Routing is recommended when:

- A. The SteelHead is in a different subnet from the client and servers.
- B. The SteelHead is in the same subnet as the clients and servers.
- C. The SteelHead is in the same subnet as the servers or clients.

Answer: A

Explanation: Enabling simplified routing eliminates the need to add static routes when the steelhead appliance is in a different subnet from the client and the server.

Note: Simplified routing changes the process used to select the destination Ethernet address for packets transmitted from in-path interfaces. Simplified routing collects the IP address for the next hop MAC address from each packet it receives to address traffic. With simplified routing, can use either the WAN or LAN-side device as a default gateway. The steelhead appliance learns the right gateway to use by watching where the switch or router sends the traffic, and by associating the next-hop Ethernet addresses with IP addresses.

References:

http://h20564.www2.hp.com/hpsc/doc/public/display?docId=mmr_kc-0127411

NEW QUESTION 117

When the SteelHead SaaS optimization service is correctly configured, how does the SteelHead identify the SaaS traffic that needs to be optimized?

- A. The SteelHead recognized the URL of the SaaS traffic using the DPI engine.
- B. The SteelHead must be configured with appropriate in-path rules on the cloud SteelHead.
- C. The SteelHead must be configured with appropriate in-path rules on the data center side.
- D. As part of the configuration, the SteelHead downloads a list of IP addresses that correspond to SaaS servers.
- E. The SteelHead must be configured with appropriate in-path rules on the client side.

Answer: E

Explanation: You can configure what traffic a Steelhead appliance optimizes and what other actions it performs, using the following:

In-path rules are used only when a connection is initiated. Because connections are typically initiated by clients, in-path rules are configured for the initiating, or client-side, Steelhead appliance.

References:

Steelhead Appliance Deployment Guide, Including the Steelhead Mobile Controller, December 2013 , page 26

<https://support.riverbed.com/bin/support/download?did=a53locldv9s5oc0agjp851iol>

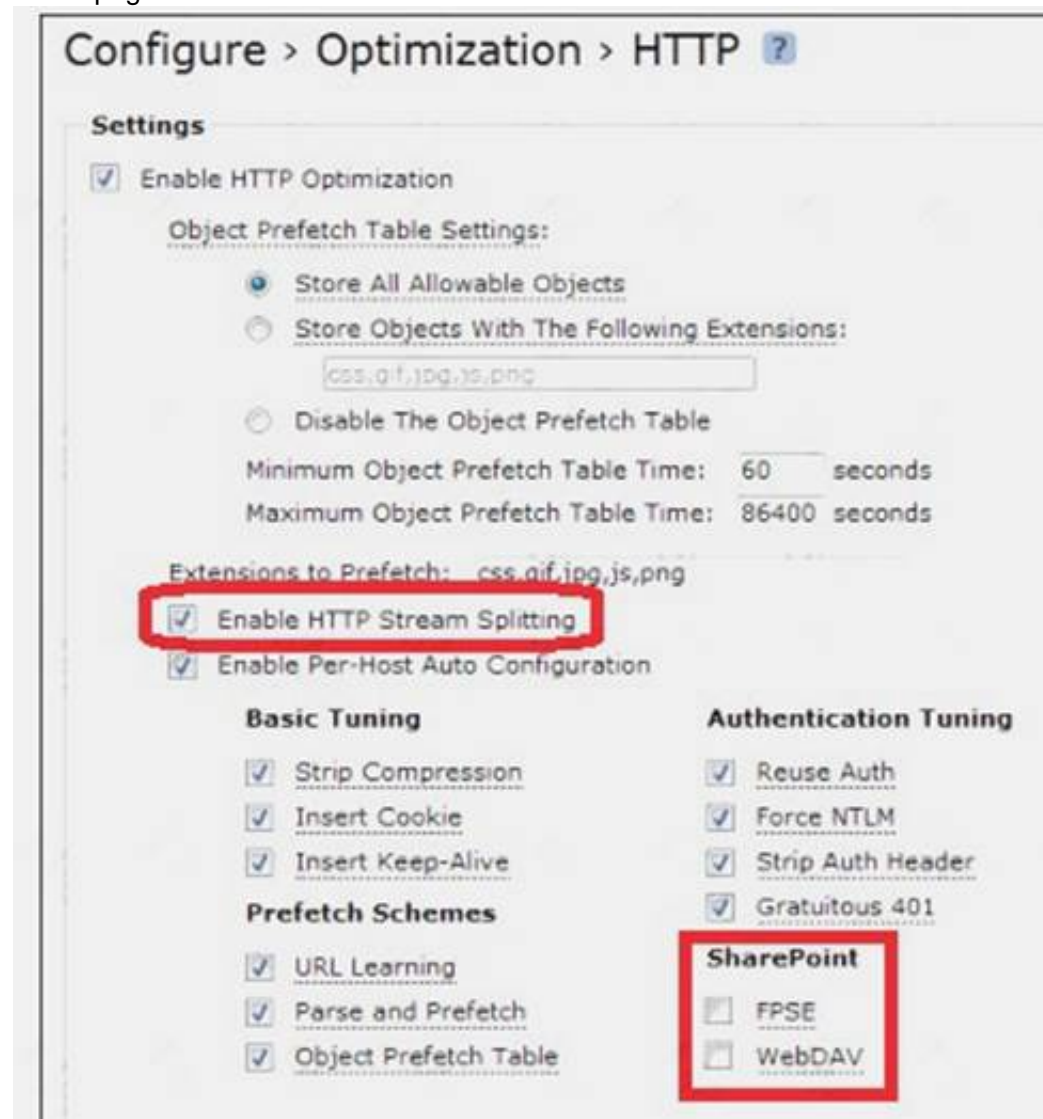
NEW QUESTION 120

The SteelHead's HTTP optimization blade supports a number of other configurable features as well. Examples include: (choose two)

- A. Video stream splitting
- B. Proxy File Service
- C. Citrix optimization
- D. SharePoint (WebDAV and FPSE)

Answer: AD

Explanation: To configure an HTTP optimization scheme for a particular hostname or server subnet Choose Configure > Optimization > HTTP to display the HTTP page



Enabling the Enable HTTP Stream Splitting feature on the client-side Steelhead appliance to split Silverlight smooth streaming, Adobe Flash HTTP dynamic streams, and Apple HTTP Live Streaming (HLS).

This feature includes support for Microsoft Silverlight video and Silverlight extensions support on Information Internet Server (IIS) version 7.5 installed on Windows Server 2008 R2.

References:

Steelhead Appliance Management Console User's Guide, Version 8.5.1, November 2013, pages 148, 150
https://support.riverbed.com/download.htm?product_name=steelhead&did=b0k7v640ooladbjpgbpt57rcb9

NEW QUESTION 121

Automatic registration of devices with the SteelCentral Controller for SteelHead (SCC) requires which one of the following?

- A. RiOS 8.0 for SteelHead and 4.0 for Interceptor
- B. The SCC must have joined the Windows domain
- C. Pre-trusted SSL certificates on the devices and SCC
- D. The serial number of the managed device to be preconfigured in the SCC
- E. The name "riverbedcmc" to be an entry in DNS resolving to the SCC primary IP address

Answer: E

Explanation: To use automatic registration, prepare the appliance for registration with the SCC by entering the IP address or DNS-registered hostname of the SCC when you run the configuration wizard on the appliance. Riverbed recommends that you set up your DNS servers to resolve riverbedcmc to the primary interface IP address of your SCC. If you configure your DHCP servers to forward the correct DNS settings, any appliance added into the network and powered on should automatically register with the SCC.

Alternatively, you can use the cmc enable and cmc hostname commands. If you do not change the default hostname, it remains riverbedcmc.

References:

SteelCentral Controller for SteelHead Deployment Guide, May 2016, page 14

<https://support.riverbed.com/bin/support/download?did=mcmq1o68fbs27lqc5798c4p8m6>

NEW QUESTION 122

Which endpoint operations can you perform from the SteelCentral Controller for SteelHead Mobile web interface? (Choose four.)

- A. Reset Client-Server Connection
- B. Request System Dump
- C. Request TCP Dump
- D. Reset Client-Controller Connection
- E. Request Memory Dump

Answer: ABCE

Explanation: Reset Client-SMC Connection: Select the check box next to one or more endpoint user names, and click Reset ClientSMC Connection to reset the connection between the Mobile Controller and the endpoint client.

Request System Dump: Select the check box next to one or more endpoint user names and click Request System

Dump to upload the files.

Request TCP Dump: Select the check box next to one or more endpoint user names and click Request TCP Dump to upload the files.

Request Memory Dump: Uploads the memory dump files. References:

Steelhead Mobile Controller User's Guide, Version 4.0.2, May 2013, Page 150 <https://support.riverbed.com/download.htm?did=874>

NEW QUESTION 126

What does enabling "Out-of-Path Support" do on the General Service Settings page?

- A. It allows for Interceptor and VVCCP working.
- B. It allows the Primary interface to listen on port 7810.
- C. It disables the LAN Interface.
- D. It disables optimization on all in-path interfaces.
- E. It allows the Primary interface to listen on ports 7800 and 7810.

Answer: B

Explanation: If you have a backup, out-of-path Steelhead appliance in your system (that is, failover support), for Backup Appliance IP Address, specify the IP address and port for the backup appliance in the Backup IP and Port text boxes.

Use the format 0.0.0.0/0. The default port is 7810.

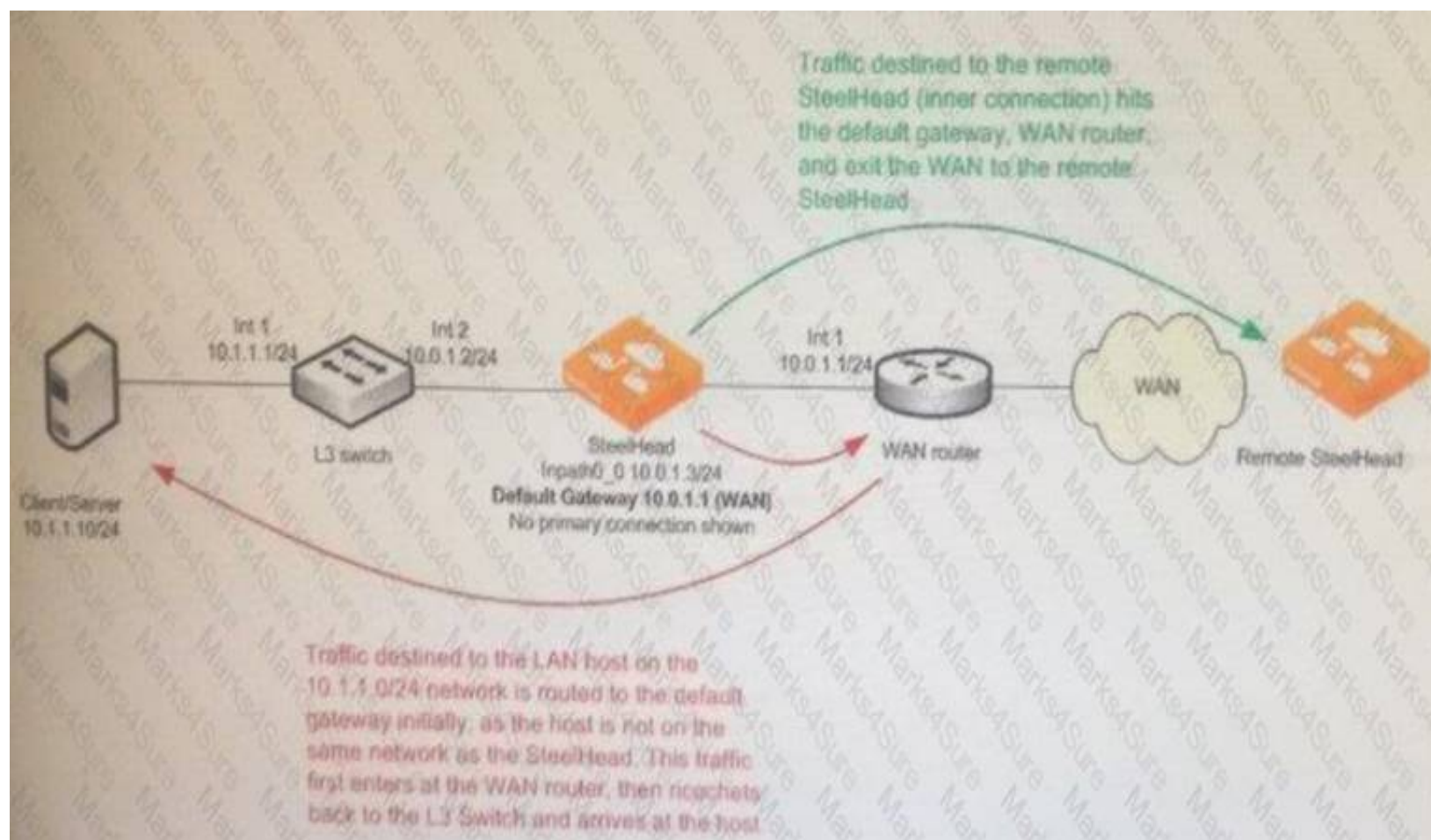
Note: Out-of-Path - The SteelHead isn't in the direct path between the client and the server. Servers see the IP address of the server-side SteelHead rather than the client IP address, which might impact security policies. An out-of-path configuration is suitable for data center locations where physically in-path or virtually in-path configurations aren't possible.

References:

Steelhead Appliance Installation and Configuration Guide, Version 7.0.3, May 2012, page 44 <https://support.riverbed.com/bin/support/download?did=614>

NEW QUESTION 131

Which SteelHead feature would resolve the packet ricochet seen in the diagram below?



- A. Simplified Routing
- B. Full Transparency
- C. Path Selection
- D. Connection Forwarding

Answer: A

Explanation: Simplified routing avoids situations when a packet traverses a SteelHead more than once—this behavior is called packet ricochet. In environments where the SteelHead is installed in a subnet different than the clients and servers, simplified routing prevents packet ricochet for optimized traffic from the SteelHead.

Here there is a Packet Ricochet When the SteelHead Default Gateway Is on the WAN shows an example of packet ricochet when the SteelHead default gateway is configured for the WAN router, the host sits on a different network than the SteelHead, and simplified routing is not enabled.

References: <https://support.riverbed.com/bin/support/static/fbunsuu0632vi3jrspe0evbko9/html/u2pi6l52l4drmhq3uhck9tu7h>

NEW QUESTION 132

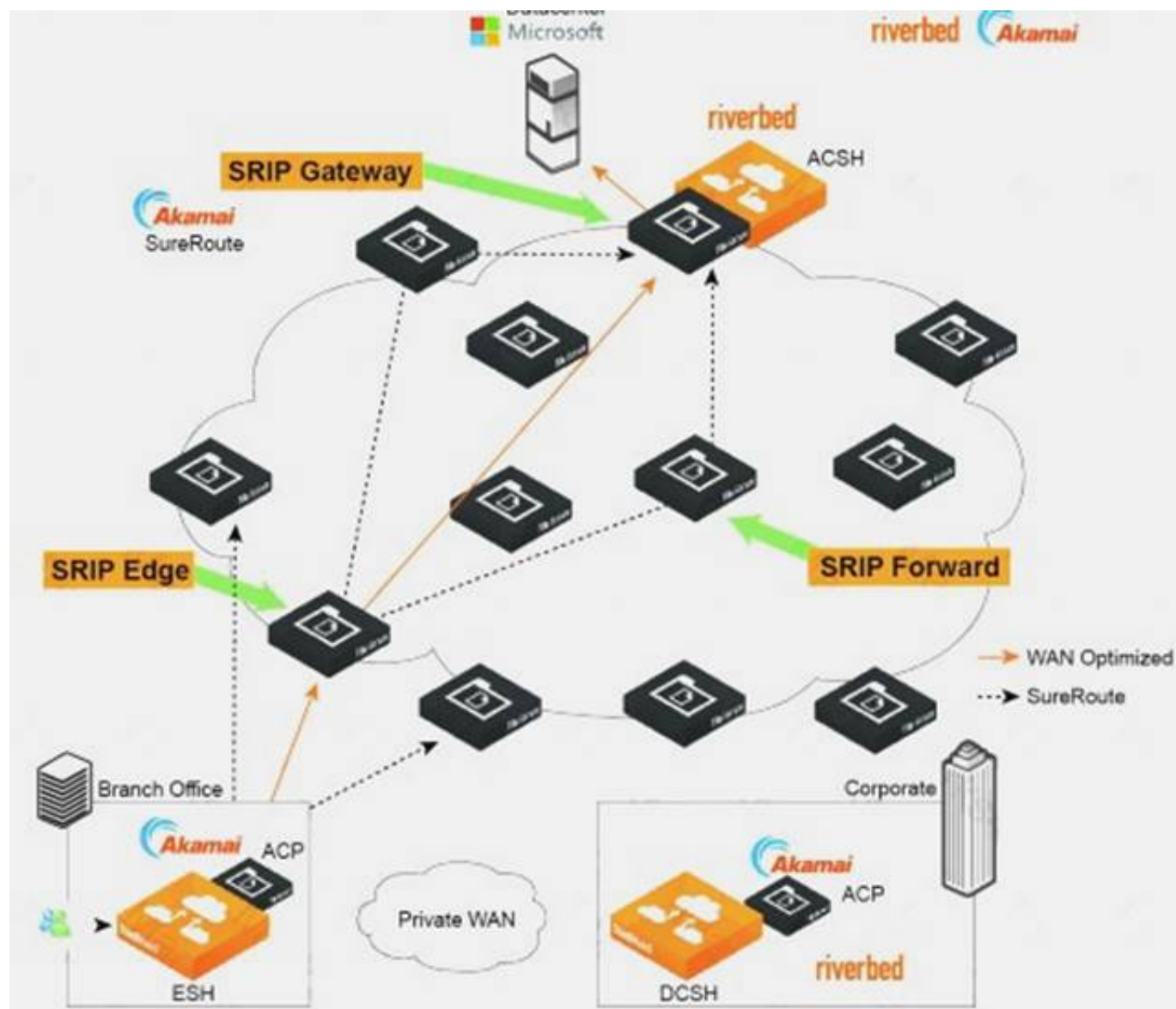
Which of the following correctly describe the two topology deployment modes of SteelHead SaaS? (Select two.)

- A. In direct mode, the cloud optimized traffic is encapsulated at the branch-side SteelHead appliance.
- B. Direct mode cannot be used if the internet traffic exit points is centralized at the customer data center and not available from the branch.
- C. In backhaul mode the cloud-optimized traffic is encapsulated at the data center but the SSL optimization starts at the branch.
- D. Backhaul mode allows to optimize traffic to the cloud from the data center without the need of a branch SteelHead.

Answer: AC

Explanation: A: In direct mode, the ESH appliance encapsulates the traffic and sends it directly to a server in the Akamai (Branch Office xample) network. Akamai SureRoute optimization technology ensures that the traffic is forwarded through the Akamai network along the fastest path toward its destination at the data center hosting the SaaS application.

Figure: Example of Direct Branch Internet Deployment

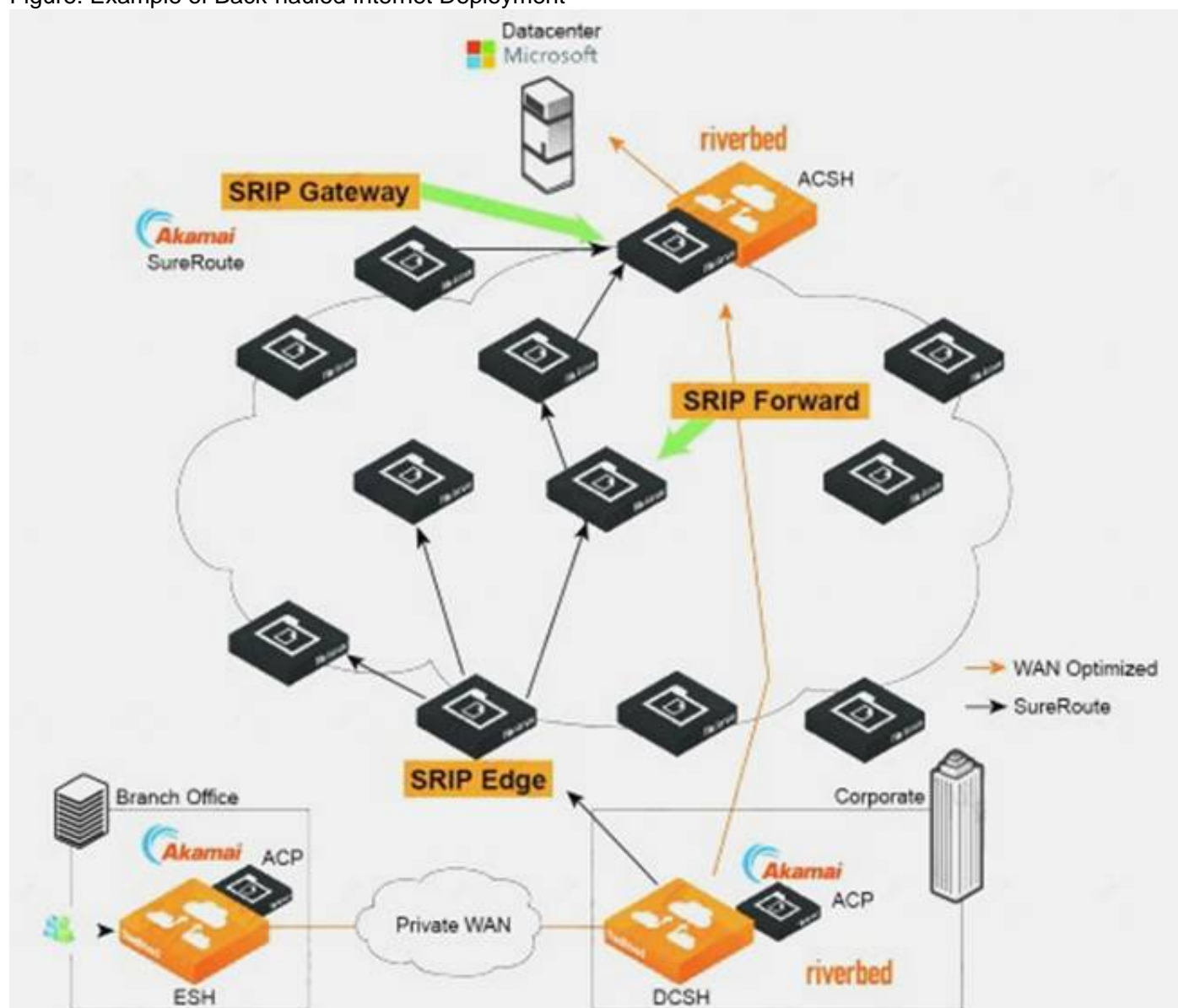


C: Back-hauled Internet Deployment

In this topology, the branch does not have its own connection to the Internet. All traffic directed to the Internet is back-hauled over a private WAN or VPN to the organization's data center.

Although the DCSH encapsulates the traffic, it plays no role in the SSL optimization process. SSL optimization still takes place between the ESH appliance and the ACSH. Ensure that you establish the SSL peering trust between them.

Figure: Example of Back-hauled Internet Deployment

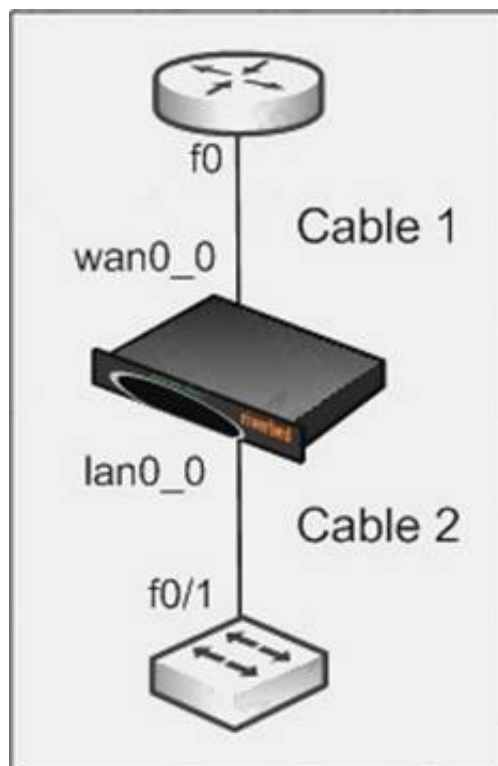


References:

SteelHeadSaaS User's Guide, RiOS Version 9.1, July 2015, pages 8-9

NEW QUESTION 136

Refer to the exhibit.



Which of the following correctly describes the combination of cable types used in a fail-to-wire scenario for the interconnected devices shown in the exhibit? Assume Auto-MDIX is not enabled on any device.

- A. Cable 1: Crossover, Cable 2: Crossover
- B. Cable 1: Straight-through, Cable 2: Straight-through
- C. Cable 1: Crossover, Cable 2: Straight-through
- D. Cable 1: Straight-through, Cable 2: Crossover

Answer: C

NEW QUESTION 139

What is the smallest and largest datastore size one can allocate for a Steelhead Mobile client?

- A. 256 MB and 20 GB on disk
- B. 1 GB and 100 TB on disk
- C. 256 MB and 1 TB in memory
- D. 64 KB and 512 KB in memory
- E. 10% and 50% of the available disk space

Answer: A

NEW QUESTION 141

To run RSP on a Steelhead, you need to have an RSP license and a minimum of how much memory added to the unit?

- A. 1 GB
- B. 2 GB
- C. 3 GB
- D. 4 GB

Answer: B

NEW QUESTION 143

If an administrator wanted to compare the performance of Microsoft file sharing across the WAN for two clients with and without Riverbed optimization, what strategy could you use to enable this testing?

- A. In-path rule on client-side Steelhead appliance to pass through port 139 and 445 for the source IP of one of the test clients
- B. Disable optimization on the Steelhead appliance
- C. In-path rule on server-side Steelhead appliance to pass through port 139 and 445 for the source IP one of the test clients
- D. A and C

Answer: A

NEW QUESTION 145

Which of the following expansion cards are available for the Steelhead appliance xx50 series? (Select 2)

- A. Four-Port Copper Gigabit-Ethernet PCI-E
- B. Four-Port SX Fiber Gig-E PCI-X
- C. Five-Port Copper Gigabit-Ethernet PCI-E
- D. Two-Port SX Fiber Gigabit-Ethernet PCI-E
- E. Three-Port SX Fiber Gig-E PCI-X

Answer: AD

Explanation: Topic 3, Exam Pool C

NEW QUESTION 147

When examining SMB connections which are SteelHead optimized, you notice that for each IP client and server pair, there are often two connections created – one on destination port 139 and one on destination port 445. What is the reason for this?

- A. This is because SMB2 and CIFS optimization are both enabled on the SteelHeads.
- B. The server must be ignoring or resetting connections on port 139, so the client tries again on port 445.
- C. The server must be ignoring or resetting connections on port 445, so the client again on port 139.
- D. Clients often try to connect on port 139 and 445 simultaneously for compatibility reason
- E. Once one connection is accepted, the other gets reset.

Answer: D

Explanation: Clients try to connect to 139 and 445 at the same time. Whatever ports gets the first response will be used for communications.
References: <https://support.riverbed.com/bin/support/static/lrj6rq1evg0fnm7pekuq3j2md1/html/vte4p5uj2dkg9k1ukjv82835>

NEW QUESTION 151

Which of the following are configurable attributes of an Interceptor appliance? (Select 3)

- A. Synchronizing datastore
- B. Sharing connection state with a parallel Interceptor appliance
- C. Redirect to a Steelhead appliance cluster
- D. Failover to another Interceptor appliance

Answer: BCD

NEW QUESTION 155

What benefit does the Interceptor appliance provide? (Select 3)

- A. Load balances connections across Steelhead appliances
- B. Provides redundancy in case of Steelhead appliance failure
- C. Maintains stateful connection table if a Steelhead appliance fails
- D. Allows clustering of multiple Steelhead appliances

Answer: ABD

NEW QUESTION 158

Overcoming bandwidth limitations is a function of:

- A. Transport Streamlining
- B. Application Streamlining
- C. Data Streamlining
- D. Storage Streamlining

Answer: C

NEW QUESTION 162

The Steelhead Mobile client is supported on the following client platforms: (Select 3)

- A. Windows 2000
- B. PDA
- C. Windows XP
- D. Vista-32
- E. Linux

Answer: ACD

NEW QUESTION 166

What default DNS entry is required for CMC touchless auto-configuration?

- A. riverbedcmc
- B. cmcsteelhead
- C. cmcriverbed
- D. steelheadcmc

Answer: A

NEW QUESTION 169

Which of the following interfaces can be configured using the configuration wizard?

- A. Primary only
- B. Primary and inpath0_0
- C. Inpath0_0 only
- D. Primary and auxiliary

Answer: B

NEW QUESTION 174

The key difference between the "Degraded" status and the "Critical" status is:

- A. With degraded, only one alarm has been triggered, whereas with critical, two or more alarms were triggered
- B. With degraded, the Steelhead appliance is still optimizing traffic, whereas with critical the Steelhead may or may not be optimizing
- C. With degraded, there is no optimization due to a software problem, whereas with critical there is no optimization due to a hardware problem
- D. With both degraded and critical, optimization functions as normal however administrator attention is required

Answer: B

NEW QUESTION 175

The interface used by the Steelhead appliance for system management and datastore synchronization is:

- A. WAN0_0
- B. LAN0_0
- C. Inpath0_0
- D. Primary

Answer: D

NEW QUESTION 177

An employee who has just installed Steelhead Mobile onto her workstation notices that she never gets any reduction. It always says 0%.

The status of the Mobile client appears to be: Optimization State: Healthy

Controller Status: Connected: Branch

The reason she is seeing 0% reduction statistics is:

- A. Location Awareness is in effect
- B. The Steelhead appliance in the branch office has currently failed
- C. There are no more Steelhead Mobile licenses available
- D. The Steelhead Mobile Controller is not available as it has been relocated to a branch office
- E. Steelhead Mobile does not work on workstations, only laptops

Answer: A

NEW QUESTION 181

Overcoming TCP chattiness and latency are functions of:

- A. Storage Streamlining
- B. Transport Streamlining
- C. Data Streamlining
- D. Application Streamlining

Answer: B

NEW QUESTION 185

When implementing WCCP, a Steelhead appliance is connected using which Steelhead appliance interface for optimization?

- A. lan0_0
- B. wan0_0
- C. Primary
- D. AUX
- E. Remote

Answer: B

NEW QUESTION 189

A fat pipe is a network that can carry large amounts of data without significantly degrading transmission speed.

If you have a fat pipe that is not being fully utilized and you are experiencing WAN congestion, latency, and packet loss as a result of the limitations of regular TCP, which of the following RiOS features will help? (Select 2)

- A. Enable Forced Burst TCP (FB-TCP)
- B. Enable HighSpeed TCP (HSTCP)
- C. Disable admission control
- D. Lower the Advanced Security Checkflow Parameter (ASCP)
- E. Enable Maximum TCP (MX-TCP)
- F. Enable disk encryption

Answer: BE

NEW QUESTION 190

Which of the following best describes Link State Propagation (LSP)?

- A. LSP is not a Steelhead appliance feature

- B. LSP monitors the LAN/WAN pair and reflects the up/down status
- C. LSP is an enhancement to auto negotiation
- D. LSP is an enhancement to Spanning Tree

Answer: B

NEW QUESTION 194

Steelhead appliance models vary according to which of the following attributes?

- 1. Number of concurrent TCP connections that can be optimized
- 2. Amount of disk storage available for Scalable Data Referencing
- 3. Level of encryption supported
- 4. Maximum possible in-path interfaces

- A. 1, 2, and 3
- B. 1, 2, and 4
- C. 2, 3, and 4
- D. 1, 3, and 4
- E. 1, 2, 3, and 4

Answer: B

NEW QUESTION 195

In what file system can the Steelhead Mobile client software be installed?

- A. FAT
- B. NTFS
- C. FAT32
- D. UFS
- E. EXT3

Answer: B

NEW QUESTION 197

On the Interceptor appliance what is the size of the datastore?

- A. 0 MB
- B. 600 MB
- C. 1.2 TB
- D. 3.6 TB
- E. 4.8 TB

Answer: A

NEW QUESTION 200

What effect will enable SDR-M (Scalable Data Referencing – Memory) have on a Steelhead appliance in production?

- A. An increase in overall LAN throughput
- B. SDR would occur in RAM until flushed to disk
- C. An increase in overall WAN throughput
- D. SDR would occur on disk and backed up to RAM for future lookups
- E. SDR must occur over the primary interface directly to RAM

Answer: A

NEW QUESTION 202

Steelhead Mobile licensing is based on what model?

- A. Concurrent usage
- B. Per seat
- C. Hybrid per seat/concurrent usage
- D. Steelhead Mobile does not use a licensing model as long as you do not exceed the capacity of the SMC

Answer: A

NEW QUESTION 207

Steelhead Mobile enables you to: (Select 3)

- A. Optimize UDP traffic
- B. Optimize ICMP traffic
- C. Optimize TCP traffic
- D. Optimize satellite TCP traffic
- E. Optimize TCP traffic over General Packet Radio Service (GPRS)

Answer: CDE

NEW QUESTION 211

What Steelhead appliance interface must be connected in order to peer with the Interceptor appliance for optimization?

- A. Primary
- B. WAN
- C. LAN
- D. AUX
- E. Console

Answer: B

NEW QUESTION 212

What platform of VMware enables you to run the Central Management Console as a virtual appliance? (Select 2)

- A. ESX
- B. Desktop
- C. VMX
- D. ESXi
- E. VMDK

Answer: AD

NEW QUESTION 216

On a remote Steelhead appliance, what is the easiest way to tell what model of Steelhead appliance you are working with using the Management Console (GUI)?

- A. On the Home page of the Steelhead appliance
- B. Go to Configure > Optimization > General Service Settings
- C. Use the “show module” CLI command
- D. Go to Reports > Maintenance > System Info
- E. Go to Configure > Configurations > Boot Order Info

Answer: A

NEW QUESTION 218

A customer is marking QoS between the Steelhead appliances based on the application (port number) and IP addresses being used. What is the recommended WAN visibility mode?

- A. Tunnel mode
- B. Port Transparency
- C. Full Transparency
- D. SSL mode

Answer: C

NEW QUESTION 222

Log messages in the Steelhead appliance Management Console such as “error=SMB_SHUTDOWN_ERR_SEC_SIG_ENABLED” are an indication of what condition?

- A. The Steelhead appliance has entered admission control
- B. The Steelhead appliance has detected an asymmetric network
- C. The Steelhead appliance is configured with the incorrect speed or duplex on the Primary interface
- D. The Steelhead appliance is configured with the incorrect speed or duplex on the in-path interfaces
- E. The Steelhead appliance is configured in “Tunnel Mode”
- F. The Steelhead appliance has detected Windows Server Message Block (SMB) signing

Answer: F

NEW QUESTION 225

The Steelhead Mobile client software builds an optimized connection to what end device?

- A. The nearest SMC
- B. A Steelhead appliance
- C. A Central Management Console (CMC)
- D. The VPN concentrator
- E. Another Steelhead Mobile client

Answer: B

NEW QUESTION 230

When implementing WCCP, Riverbed recommends using which service groups?

- A. 61 and 62
- B. 69 and 70
- C. 100 and 101
- D. 101 and 102
- E. 102 and 103

Answer: A

NEW QUESTION 231

If a file is not optimized for more than one user at a time, this indicates:

- A. Steelhead appliance has entered admission control
- B. Steelhead appliance is configured with the incorrect speed or duplex on the Primary interface
- C. Steelhead appliance is configured with the incorrect speed or duplex on the in-path interfaces
- D. Steelhead appliance is not able to acquire a "File Hold Key (FHK)"
- E. Steelhead appliance is not able to acquire an "Opportunistic Lock (oplock)"
- F. Steelhead appliance is not able to acquire a "Double Link (doulink)"

Answer: E

NEW QUESTION 232

Which xx50 Steelhead appliance models provide both inpath0_0 and inpath0_1 interfaces without adding additional network cards? (Select 3)

- A. Steelhead 550
- B. Steelhead 6050
- C. Steelhead 1050
- D. Steelhead 250
- E. Steelhead 2050

Answer: BCE

NEW QUESTION 233

What is the total number of optimized concurrent TCP connections supported on an Interceptor appliance?

- A. 100,000
- B. 200,000
- C. 300,000
- D. 500,000
- E. 1,000,000

Answer: E

NEW QUESTION 237

To run RSP which Steelhead appliance ports must to be connected to your network? (Select 2)

- A. Primary
- B. LAN
- C. Inpath0_0
- D. Auxiliary
- E. WAN

Answer: AD

NEW QUESTION 242

Login to the CMC appliance can be authenticated against what type servers? (Select 3)

- A. RADIUS
- B. Local
- C. XAUTH
- D. TACACS+
- E. Kerberos

Answer: ABD

NEW QUESTION 244

Which of the following Steelhead appliance models support redundant power supplies? (Select 2)

- A. 250
- B. 1221
- C. 2012
- D. 2050
- E. 5050

Answer: DE

NEW QUESTION 245

What are the major components required to allow optimization via the Steelhead Mobile client? (Select 3)

- A. Steelhead appliance
- B. Central Management Console
- C. Steelhead Mobile Controller
- D. Steelhead Mobile client host, such as a laptop or desktop

Answer:

ACD

NEW QUESTION 248

Rules that dictate the types of TCP traffic that a Steelhead Mobile client should optimize are configured in the:

- A. Acceleration policy
- B. Authorization policy
- C. Peering rules
- D. Fixed target policy

Answer: A

NEW QUESTION 250

What is the default QoS classification mode?

- A. Flat
- B. Hierarchical
- C. WRED
- D. LLQ
- E. FEC

Answer: A

NEW QUESTION 253

How can I obtain Virtual Steelhead appliance license keys?

- A. Using the Riverbed public support site
- B. Contacting VMware
- C. Virtual Steelhead appliance license keys are included in the install package
- D. Base licenses are not required
- E. Only SSL licenses are not included

Answer: A

NEW QUESTION 256

Which of the following is a valid type of in-path rule on the Steelhead appliance? (Select 3)

- A. Pass Through
- B. Dynamic Detection
- C. Auto Discover
- D. Fixed-Target
- E. Real-Time

Answer: ACD

NEW QUESTION 260

When performing datastore synchronization between two Steelhead appliances, segments of data are exchanged between them. Which interfaces can be used for datastore synchronization? (Select 2)

- A. In-path
- B. Primary
- C. Auxiliary
- D. WAN
- E. Remote

Answer: BC

NEW QUESTION 262

Which two parameters are required when configuring a fixed-target rule?

- A. The target IP address and subnet mask of the target Steelhead appliance
- B. The TCP option number for auto-discovery
- C. The target Steelhead appliance and destination port number
- D. The source IP address and source port number of the client traffic

Answer: C

NEW QUESTION 263

Assume the SSL server is configured for the default SSL port. Which port has to be specified in the in-path rules of the client-side Steelhead appliance?

- A. 443
- B. 445
- C. 7801
- D. 8080

Answer:

A

NEW QUESTION 266

What are the default port labels on the Steelhead appliance? (Select 3)

- A. Secure
- B. Interactive
- C. RBT-Proto
- D. Fixed-Target
- E. Pass-Through

Answer: ABC

NEW QUESTION 270

In a single in-path design, in order for CIFS prepopulation to properly function at a branch office, the Primary interface of the Steelhead appliance must be:

- A. On the LAN side branch office Steelhead
- B. Directly connected to the AUX interface
- C. On the same switch as the WAN side interface
- D. In the same subnet as the file server

Answer: A

NEW QUESTION 274

Can you manage your Virtual Steelhead appliance from a Central Management Console?

- A. Yes, this is possible
- B. Only on out-of-path deployments
- C. Only on in-path deployments
- D. There is a dedicated management device for Virtual Steelhead appliances
- E. You can only manage your Virtual Steelhead appliances using a virtualized console

Answer: A

NEW QUESTION 278

A Steelhead appliance can synchronize its datastore with a maximum of how many other Steelhead appliances?

- A. 1
- B. 2
- C. 3
- D. 4

Answer: A

NEW QUESTION 279

Datastore synchronization can be used in which of the following deployments?

- A. Serial in-path
- B. Logical in-path
- C. Server-side out-of-path
- D. Parallel in-path
- E. All of the above

Answer: E

NEW QUESTION 280

Which of the following status states of the Steelhead appliance are valid? (Select 3)

- A. Degraded
- B. Normal
- C. Healthy
- D. Critical
- E. Failed

Answer: ACD

NEW QUESTION 283

Assuming the Steelhead appliance has a 250 GB datastore capacity, by enabling PFS on a supported Steelhead appliance which of the following would be true:

- A. The datastore capacity will shrink due to the amount of space used by PFS
- B. The datastore capacity will grow due to the amount of space added by PFS
- C. The datastore capacity does not change
- D. The datastore capacity will have to be reformatted

Answer: C

NEW QUESTION 285

Steelhead appliances increase. (Select 2)

- A. Application performance
- B. Data transfer speed over the WAN
- C. Data transfer speed over the LAN
- D. Quality of service
- E. WORM stability
- F. Prototyping

Answer: AB

NEW QUESTION 286

What does the Transport Streamlining module in RiOS do? (Select 2)

- A. Reduces transport protocol inefficiencies
- B. Prioritizes application traffic
- C. Virtually expands TCP windows
- D. Reduces WAN round trips at the application layer

Answer: AC

NEW QUESTION 289

A user downloads a Microsoft PowerPoint presentation from a server across the network. The file has been seen before by both Steelhead appliances that are optimizing the link and so the user experiences warm performance. A second user at the same office has a local copy and adds some pictures then uploads the very same file. This file transfer can be considered:

- A. Cold, the data now travels in another direction so the Steelhead appliance needs to relearn the data
- B. Cold, the file has been changed to the file needs to be stored again
- C. Warm, all the data has been seen by the Steelhead appliances before
- D. Warm, the transaction prediction module of the Steelhead appliance can detect the application and accelerate the transfer
- E. Partially warm, the Steelhead appliances only need to learn the new data

Answer: E

NEW QUESTION 293

What is the packaging distribution format for the Virtual Steelhead appliance?

- A. Open Virtual Appliance
- B. Open Virtual Image
- C. Open Virtual Release
- D. Open Virtual Source
- E. Open Virtual Package

Answer: A

NEW QUESTION 295

A Steelhead appliance can continue to optimize traffic in which of the following status states? (Select 2)

- A. Healthy
- B. Normal
- C. Critical
- D. Degraded
- E. Failed

Answer: AD

NEW QUESTION 299

Which forms of administrative authentication are supported by the Steelhead appliances?:(Select 3)

- A. NTLM
- B. TACACS+
- C. RADIUS
- D. Kerberos
- E. Local username and password

Answer: BCE

NEW QUESTION 303

A Steelhead appliance can be configured to automatically send an email to a preconfigured email address in the event of a failure. Where is this done? (Select 3)

- A. GUI
- B. CLI
- C. RADIUS/TACACS+
- D. Can be done via the Central Management Console
- E. DNS server

Answer: ABD

NEW QUESTION 307

The default action performed by the Steelhead appliance when it receives a packet with an existing DSCP value 46 is to:

- A. Override the value with a default of 0
- B. Override the value with the value of AF11
- C. Reflect the value received by the original packet
- D. Reflect the value returned by the symmetric TCP flow

Answer: C

NEW QUESTION 310

Which of the following is a benefit of the Riverbed Services Platform (RSP) on the Steelhead appliance? (Select 2)

- A. Optimizes VoIP flowing through proxy servers
- B. Removes the need for specific servers in the branch offices
- C. Allows for continued operations of specific functionality in the event of a WAN failure
- D. Provides parallel forwarding domains for asymmetrical routing

Answer: BC

NEW QUESTION 311

Which of the following local accounts are available by default on a Steelhead appliance? (Select 2)

- A. admin
- B. riverbed
- C. monitor
- D. rvbd
- E. root

Answer: AC

NEW QUESTION 315

Some applications are designed to open many TCP connections to accomplish required data transfers. Many of these connections are short-lived, yet each requires significant overhead to initiate communications. What RiOS feature was designed to reduce the overhead of these short-lived TCP connections?

- A. HSTCP
- B. MX-TCP
- C. Virtual Window Expansion
- D. Connection Pooling
- E. Transport Streamlining

Answer: D

NEW QUESTION 317

In which menu of the Steelhead Management Console do you configure WAN visibility modes?

- A. In-Path Rules
- B. Peering Rules
- C. Connection Forwarding
- D. Services
- E. Simplified Routing

Answer: A

NEW QUESTION 322

What does the RiOS acronym stand for?

- A. Riverbed interact Operations Shares
- B. Riverbed Optimization System
- C. Riverbed integrating Operating System
- D. Riverbed is Orange Shamrocks
- E. Riverbed is Outstandingly Simple
- F. Riverbed Internet Optimization System
- G. Riverbed Open Standards
- H. Riverbed Intranet Optimization System

Answer: B

Explanation: The Riverbed Optimization System (RiOS) is the software platform that powers SteelHead appliances from Riverbed.

References:

<http://www.wansolutionworks.com/RiOS.asp>

NEW QUESTION 324

Data Streamlining brings what benefits?

- A. WAN bandwidth reduction by 60-95%
- B. Eliminates redundant data transfers at the byte-sequence level
- C. Performs cross-application optimization
- D. Provides compression
- E. All of the above

Answer: E

NEW QUESTION 327

What is the datastore size?

- A. The amount of disk space available for Scalable Data Referencing (SDR) use
- B. The amount of disk space available for optimization use
- C. The amount of memory available for optimization use
- D. The amount of memory available for SDR use
- E. The amount of CPU available for optimization use

Answer: A

NEW QUESTION 331

Which version of WCCP supports redirection of all TCP traffic?

- A. Version 1
- B. Version 2
- C. Version 9
- D. Version 12.2.18

Answer: B

NEW QUESTION 332

Which of the following are considered to be root causes of poor application performance over wide area networks? (Select 3)

- A. Application protocol chattiness
- B. Transport protocol inefficiencies
- C. Proxy ARP
- D. Insufficient bandwidth
- E. Daylight Savings Time settings

Answer: ABD

NEW QUESTION 337

What are valid datastore encryption types? (Select 4)

- A. No encryption
- B. AES_128
- C. AES_64
- D. AES_256
- E. AES_192

Answer: ABDE

NEW QUESTION 340

What are the primary requirements that must be considered when sizing a Steelhead appliance for a customer? (Select 4)

- A. Optimized WAN throughput
- B. Connection count
- C. Datastore size
- D. Bypass port count
- E. Speed / duplex requirements

Answer: ABCD

NEW QUESTION 344

Which of the following factors are important to consider when sizing a Steelhead appliance? (Select 3)

- A. Number of simultaneous optimized connections
- B. The maximum optimized WAN bandwidth
- C. The size of datastore
- D. The number of applications used by the enterprise

Answer: ABC

NEW QUESTION 349

What optimization can be performed on HTTPS traffic when SSL optimization is enabled?

- A. SDR
- B. LZ
- C. Application Streamlining
- D. A and B only
- E. A, B, and C

Answer: E

NEW QUESTION 351

Users at an optimized branch office log off and close down Microsoft Outlook when they leave for the day.

When they return in the morning the Steelhead appliance's datastore is already warm for emails they received throughout the night. What is this feature called?

- A. Transparent Proxy
- B. MAPI Prepopulation
- C. MAPI Offline Optimization
- D. Connection Pooling
- E. MAPI Tunneling

Answer: B

NEW QUESTION 353

What does the Application Streamlining module in RiOS do?

- A. Eliminates redundant bytes from transfers
- B. Prioritizes application traffic
- C. Eliminates transport protocol inefficiencies
- D. Reduces WAN round trips at the application layer
- E. All of the above
- F. None of the above

Answer: D

NEW QUESTION 355

What does the Data Streamlining module in RiOS do?

- A. Eliminates redundant bytes from transfers
- B. Prioritizes application traffic
- C. Reduces transport protocol inefficiencies
- D. All of the above
- E. None of the above

Answer: A

NEW QUESTION 358

What do you configure to control optimization on a Steelhead appliance? (Select 2)

- A. In-path rules
- B. Optimization rules
- C. Load balancing rules
- D. Peering rules
- E. TCP rules
- F. Acceleration policies

Answer: AD

NEW QUESTION 362

A user uploads a Microsoft Word document to a server across the network using the file transfer protocol (FTP). The file has been seen before by the Steelhead appliances that are optimizing the link and so the user experiences warm performance. A second user at the same location downloads the file from the same server using the CIFS protocol. This file transfer can be considered:

- A. Cold, the data now travels in another direction so the Steelhead appliances need to relearn the data
- B. Cold, the application protocol is now different so the Steelhead appliances need to relearn the data
- C. Warm, the data has been seen by the Steelhead appliances before making the application protocol irrelevant
- D. Warm, only because the transfer uses CIFS
- E. Partially warm, the Steelhead appliances only need to learn the new data

Answer: C

NEW QUESTION 363

When deploying a Steelhead appliance server-side out-of-path in the data center, which configuration is necessary on the client-side Steelhead appliance in order for the design to function correctly?

- A. An auto-discover rule with the IP address of the server-side Steelhead appliance
- B. A fixed-target rule with the Primary IP address of the server-side Steelhead appliance

- C. A fixed-target rule with the IP address of the destination server
- D. No configuration is required

Answer: B

NEW QUESTION 364

When performing a logical in-path deployment, which interface needs to be physically cabled for optimization to occur?

- A. LAN
- B. AUX
- C. WAN
- D. Primary

Answer: C

NEW QUESTION 366

.....

Thank You for Trying Our Product

* 100% Pass or Money Back

All our products come with a 90-day Money Back Guarantee.

* One year free update

You can enjoy free update one year. 24x7 online support.

* Trusted by Millions

We currently serve more than 30,000,000 customers.

* Shop Securely

All transactions are protected by VeriSign!

100% Pass Your 101-01 Exam with Our Prep Materials Via below:

<https://www.certleader.com/101-01-dumps.html>