

## 70-339 Dumps

# Managing Microsoft SharePoint Server 2016

<https://www.certleader.com/70-339-dumps.html>



**NEW QUESTION 1**

Note: This question is part of a series of questions that present the same scenario. Each question in the series contains a unique solution that might meet the stated goals. Some question sets might have more than one correct solution, while others might not have a correct solution.  
After you answer a question in this sections, you will NOT be able to return to it. As a result, these questions will not appear in the review screen.  
You are the SharePoint administrator for a company.  
The SharePoint environment is causing excessive information to be recorded in the diagnostic logs.  
You need to configure the SharePoint farm to only write events to the Windows event log that are equal to or more severe than the Error level.  
You run the following Windows PowerShell command: Start-SPDiagnosticsSession –TraceLevel High  
Does the solution meet the goal?

- A. Yes
- B. No

**Answer:** B

**NEW QUESTION 2**

You are the SharePoint administrator for a company. The SharePoint environment experiences intermittent performance degradation at various times each day. You need to gather information from the SharePoint Servers to help determine the cause of the performance degradation. You must be able to evaluate the information with both Windows tools and SharePoint tools.  
In the table below, identify the action that you should perform to provide the information for each environment.  
NOTE: Make only one selection in each column. Each correct selection is worth one point.

Answer Area		
Action	Windows monitoring	SharePoint usage data
Launch Task Manager	<input type="radio"/>	<input type="radio"/>
Launch Resource Monitor	<input type="radio"/>	<input type="radio"/>
Run the following Windows PowerShell cmdlet: <b>Get-SPDiagnosticsPerformanceCounter</b>	<input type="radio"/>	<input type="radio"/>
Run the following Windows PowerShell cmdlet: <b>Add-SPDiagnosticsPerformanceCounter</b>	<input type="radio"/>	<input type="radio"/>
Create a Data Collector set	<input type="radio"/>	<input type="radio"/>

**Answer:**

**Explanation:**

Action	Windows monitoring	SharePoint usage data
Launch Task Manager	<input type="radio"/>	<input type="radio"/>
Launch Resource Monitor	<input checked="" type="radio"/>	<input type="radio"/>
Run the following Windows PowerShell cmdlet: <b>Get-SPDiagnosticsPerformanceCounter</b>	<input type="radio"/>	<input checked="" type="radio"/>
Run the following Windows PowerShell cmdlet: <b>Add-SPDiagnosticsPerformanceCounter</b>	<input type="radio"/>	<input type="radio"/>
Create a Data Collector set	<input type="radio"/>	<input type="radio"/>

### NEW QUESTION 3

In this section, you will see one or more sets of questions with the same scenario and problem. Each question presents a unique solution to the problem, and you must determine whether the solution meets the stated goals. Any of the solutions might solve the problem. It is also possible that none of the solutions solve the problem.

Once you answer a question in this section you will NOT be able to return to it. As a result, these questions will not appear in the review screen.

Note: This question is part of a series of questions that present the same scenario. Each question in the series contains a unique solution. Determine whether the solution meets the stated goals.

You are the SharePoint administrator for a company.

You must provide an on-premises SharePoint solution that helps monitor and analyze your business in order to make informed business decisions that align with the objectives and strategies for the company. The solution must include the following features:

- Dashboards
- Scorecards
- Key Performance Indicators (KPI) You configure Power BI.

Does the solution meet the goal?

- A. Yes
- B. No

**Answer: B**

**Explanation:** You need PerformancePoint Services which is a SharePoint BI tool. This is not the same as Power BI. References:  
[https://technet.microsoft.com/en-us/library/ee424392\(v=office.16\).aspx](https://technet.microsoft.com/en-us/library/ee424392(v=office.16).aspx)

### NEW QUESTION 4

You are a SharePoint administrator for Contoso, Ltd. The company acquires WingTip Toys.

You must be able to manage and administer SharePoint site collections in the WingTip Toys SharePoint farm by using Windows PowerShell.

You need to configure permissions for SharePoint site collection administrators.

What should you do?

- A. Add the WingTip Toys SharePoint administrators to the Site Collection Administrators group.
- B. Add the Contoso,Lt
- C. SharePoint administrators to the Site Collection Administrators group.
- D. Add the Contoso, Lt
- E. SharePoint administrators to the SharePoint\_Shell\_Access role.
- F. Add the WingTip Toys SharePoint administrators to the SharePoint\_Shell\_Access role.

**Answer: C**

### NEW QUESTION 5

Contoso, Ltd. acquires WingTip Toys. You manage the SharePoint farms for both organizations. The following table lists relevant information about farm indexing operations:

Farm	Indexed items	Entries per index partition	Indexes
Contoso	80 million	10 million	8
WingTip Toys	100 million	10 million	10

The content for Contoso and WingTip Toys must be indexed in the same search topology. Contoso wants to limit the number of Search Service applications and index partitions that must be deployed in the environment.

You need to configure the search topology for the Contoso farm to index content from both SharePoint farms. In the Contoso farm, what should you do?

- A. Create 10 additional index partitions in the existing Search Service application.
- B. Create a new Search Service application, and then add 18 index partitions.
- C. Create one additional index partition in the existing Search Service application.
- D. Create a new Search Service application that indexes content from the WingTip Toys farm.

**Answer:** A

#### NEW QUESTION 6

You manage the SharePoint2016 environment for a multinational company with 195 offices in 57 different regions. Each department in the company has its own site collection. Business users have Contribute access to their own department sites and Read access to all other department sites.

You have the following requirements:

- Maintain a standardized list of office locations across all departments.
- Track the office location as metadata for contract documents that are stored in each of the departmental site collections.
- Business users must be able to add new office locations directly when they save new files to SharePoint.
- When a user adds a new office location, the location information must be accessible to all users for use on other documents.

You need to configure SharePoint to track office location for contract documents.

Which three actions should you perform in sequence? To answer, move the appropriate actions from the list of actions to the answer area and arrange them in the correct order.

Actions	Answer Area
Configure the column to allow multiple values.	
Create a managed Metadata site column based on the Term Set.	
Configure the Column to allow any value.	
Import the office locations to a custom list and grant edit access to all users.	✓
Import the office locations list to the Term Store and set the value of the term Set to Closed.	⏪
Import the office locations list to the Term Store and set the value of the Term Set to Open.	⏩
Configure the column to display a drop-down list.	

**Answer:**

**Explanation:**



Actions	Answer Area
Configure the column to allow multiple values.	Import the office locations list to the Term Store and set the value of the Term Set to Open.
Create a managed Metadata site column based on the Term Set.	Create a managed Metadata site column based on the Term Set.
Configure the Column to allow any value.	Configure the Column to allow any value.
Import the office locations to a custom list and grant edit access to all users.	
Import the office locations list to the Term Store and set the value of the term Set to Closed.	
Import the office locations list to the Term Store and set the value of the Term Set to Open.	
Configure the column to display a drop-down list.	

#### NEW QUESTION 7

A company plans to deploy a SharePoint 2016 farm. The company only has enough budget to purchase four SharePoint Server licenses and two SQL Server licenses.

The farm must be highly available.

You need to deploy the SharePoint 2016 farm.

Which two server role sets can you use? Each correct answer presents a complete solution.

- A. Two front-end servers and two custom servers.
- B. Two front-end servers and two application servers.
- C. One front-end server, one application server, and two custom servers.
- D. One front-end server, one application server, one Search Server, and one Distributed Cache server.

**Answer:** AB

**Explanation:** References:

[https://technet.microsoft.com/en-us/library/mt346114\(v=office.16\).aspx](https://technet.microsoft.com/en-us/library/mt346114(v=office.16).aspx) [https://technet.microsoft.com/en-us/library/mt743704\(v=office.16\).aspx](https://technet.microsoft.com/en-us/library/mt743704(v=office.16).aspx)

#### NEW QUESTION 8

You are a SharePoint administrator You set up a publishing website that is based on product catalogue data. You are configuring Search to retrieve and display content from the publishing website. Content managers have site collection administrator permissions.

You need to ensure that multiple crawls can occur for the same content at the same time.

What should you do? To answer, select the appropriate value from each list in the answer area.

Search administrators must enable the following crawl type:

full crawl

continuous crawl

Role that must initiate a full index of the catalog:

site owner

content managers

Answer:

Explanation:

Search administrators must enable the following crawl type:

full crawl

continuous crawl

Role that must initiate a full index of the catalog:

site owner

content managers

NEW QUESTION 9

Your organization has a complex retention schedule that clearly defines retention policies for all document types. Each department has its own SharePoint site. In many cases, a single document library on a department site may contain financial files, human resources files, and project documentation. The following table lists the retention policies that are in place.

Content type	Retention policy
Financial records	Delete files after five years.
Human resources files	Archive files after four years.
Project documentation	Retain files for three years after the project end date.

You must administer retention rules from a single location for each type of document and must leverage out of the box functionality. You need to configure the SharePoint environment to comply with the retention schedule. What should you do?

- A. Configure information management policies for the document libraries.

- B. Activate the Disposition Approval feature.
- C. Activate the In-Place Records Management feature.
- D. Configure information management policies on content types.
- E. Activate library and folder-based retention.

**Answer:** D

**NEW QUESTION 10**

You are the SharePoint administrator for Contoso, Ltd. You deploy a new team site for the Marketing department to the company's SharePoint environment. The manager for the Marketing department must be able to add and manage groups in the new site. You need to grant the correct permissions to the manager while minimizing administrative impact. Which permission level should you grant to the manager?

- A. Designer
- B. Approver
- C. Site administrator
- D. Contributor
- E. Site Collection administrator

**Answer:** C

**NEW QUESTION 10**

Note: This question is part of a series of questions that present the same scenario. Each question in the series contains a unique solution that might meet the stated goals. Some question sets might have more than one correct solution, while others might not have a correct solution.

After you answer a question in this sections, you will NOT be able to return to it. As a result, these questions will not appear in the review screen.

You manage an on-premises SharePoint Server 2016 farm and SharePoint Online.

You plan to deploy a SharePoint Search solution. The solution must meet the following requirements: You implement cloud hybrid search for SharePoint.

Does the solution meet the goal?

- A. Yes
- B. No

**Answer:** A

**NEW QUESTION 11**

You are a SharePoint Administrator at Contoso, Ltd. The company acquires WingTips Toys, which has its own SharePoint farm. Each company will keep its existing Active Directory.

You need to recommend methods to synchronize users.

For each activity, which user synchronization option should you recommend? To answer, select the appropriate option from each list in the answer area.

NOTE: Each correct selection is worth one point.

Manage user identities for both farms.	<div>▼</div> <div>Active Directory Direct Import</div> <div>Microsoft Identity Management</div> <div>SharePoint User Profile service application</div>
Configure User Profile Synchronization for each farm.	<div>▼</div> <div>Active Directory Direct Import</div> <div>Microsoft Identity Management</div> <div>SharePoint User Profile service application</div>

**Answer:**

**Explanation:** References:

<https://docs.microsoft.com/en-us/sharepoint/administration/install-microsoft-identity-manager-for-user-profiles-> <https://docs.microsoft.com/en-us/SharePoint/install/create-a-user-profile-service-application>

**NEW QUESTION 13**

You provision and configure a new SharePoint farm. The farm has not been backed up. You need to back up all services applications in the farm.

How should you complete the Windows PowerShell command? To answer, drag the appropriate Windows PowerShell segment to need to drag the split bar between panes or scroll to view content.



Windows PowerShell segment	Answer Area
Differential	Backup <input type="text"/> -Directory\\srv01\backup\
Farm	-
Farm\Shared Services	-BackupMethod <input type="text"/> - <input type="text"/> Item
Full	
SPConfigurationDatabase	
SPFarm	

Answer:

Explanation:

Windows PowerShell segment	Answer Area
Differential	Back <input type="text"/> irectory\\srv01\backup\
Farm	-
Farm\Shared Services	-BackupMet <input type="text"/> <input type="text"/> Item
Full	
SPConfigurationDatabase	
SPFarm	

#### NEW QUESTION 18

You are the SharePoint administrator for a company. You have an on-premises SharePoint 2016 farm and an Office 365 SharePoint Online environment. The SharePoint Online environment uses a search index. You configure a Search Service application (SSA). You need to plan the integration between the SSA to the Office 365 tenant.



For each step, which action should you perform? To answer, select the appropriate option from each list in the answer area.

1.



Configure an Azure Access Control Service allocation proxy.  
Create a new managed account.  
Create a SharePoint claims provider.

2.



Register a trusted security token.  
Create a trusted root authority.  
Register a new claims provider.

3.



Publish the local service application  
Configure the SharePoint Service host.  
Configure a SharePoint Service application proxy.  
Create a new SharePoint subscription service proxy.

**Answer:**

**Explanation:**

1.

✓

Configure an Azure Access Control Service allocation proxy.  
Create a new managed account.  
Create a SharePoint claims provider.

2.

✓

Register a trusted security token.  
Create a trusted root authority.  
Register a new claims provider.

3.

✓

Publish the local service application  
Configure the SharePoint Service host.  
Configure a SharePoint Service application proxy.  
Create a new SharePoint subscription service proxy.

#### NEW QUESTION 22

You have an existing SharePoint 2016 on-premises environment. You use document libraries as file archives. Users report that they cannot upload documents larger than 3 gigabytes (GB).

You need to ensure that users can upload any type of file up to 4 GB in size. What should you do?

- A. On each front-end server in the farm, locate the following registry key: HKEY\_LOCAL\_MACHINE\SYSTEM\CurrentControlSet\Services\WebClient\Parameter
- B. Set the value of the FileSizeLimitInBytes key to 4294967295. Then, restart the Web Client service.
- C. In SharePoint Central Administration, change the value of the Maximum Upload Size property for the web application.
- D. Run the following Windows PowerShell command: \$WebApp.MaximumFileSizePerExtension.Add("MaxFileSize", 4096000)
- E. Add the following markup to the web.config file for the web application: <httpRuntime executionTimeout="999999"maxRequestLength="4096000" requestValidationMode="2.0" />

**Answer: B**

#### NEW QUESTION 23

You manage a SharePoint environment for a company. The file size for the tempdb database is set to 500 megabytes (MB).

You observe an increase in the consumption of system disk space by the tempdb database. You need to minimize the space requirements and optimize the performance of the tempdb database.

You need to optimize the performance for the tempdb database.

How should you configure the database? To answer, select the appropriate option from each list in the answer area.

**Recovery model**

**File growth increament**

▼

full  
bulk-logged  
simple

▼

20 Megabytes (MB)  
10 percent

**Answer:**

**Explanation:** Box 1: Simple TempDB Optimization

First, the TempDB recovery model should be set to simple. Indeed, this model automatically reclaims log space to keep space requirements small.

Box 2: 20 Megabytes (MB)

With 20 MB increments the TempDB will remain smaller. References:

<https://blog.dbi-services.com/how-improve-sharepoint-performance-with-sql-server-settings/>

#### NEW QUESTION 27

In this section, you will see one or more sets of questions with the same scenario and problem. Each question presents a unique solution to the problem, and you must determine whether the solution meets the stated goals. Any of the solutions might solve the problem. It is also possible that none of the solutions solve the problem.

Once you answer a question in this section you will NOT be able to return to it. As a result, these questions will not appear in the review screen.

Note: This question is part of a series of questions that present the same scenario. Each question in the series contains a unique solution. Determine whether the solution meets the stated goals.

You have an existing SharePoint 2016 on-premises environment. You are configuring a SharePoint hybrid solution.

You must store all personal sites in Office 365.

You configure the Managed Metadata service and User Profile service applications. You create a My Site Host site collection. In SharePoint Central Administration, you grant the Create Personal Site and Follow People and Edit Profile permissions to users and configure hybrid OneDrive for Business settings. Does the solution meet the goal?

A. Yes

B. No

**Answer: B**

#### NEW QUESTION 31

In this section, you will see one or more sets of questions with the same scenario and problem. Each question presents a unique solution to the problem, and you must determine whether the solution meets the stated goals. Any of the solutions might solve the problem. It is also possible that none of the solutions solve the problem.

Once you answer a question in this section you will NOT be able to return to it. As a result these questions will not appear in the review screen.

Note: This question is part of a series of questions that present the same scenario. Each question in the series contains a unique solution. Determine whether the solution meets the stated goals.

You have an existing SharePoint 2016 on-premises environment. You are configuring a SharePoint hybrid solution.

You must store all personal sites in Office 365.

You create App Management service, Managed Metadata service, and User Profile service applications. You create a web application and site collection for the My Site Host. You grant users the Create Personal Site and Follow People and Edit Profile permissions. Then, you create an audience for the users that will be redirected to Office 365. In the SharePoint Central Administration, you configure hybrid OneDrive for Business settings.

Does this solution meet the goal?

A. Yes

B. No

**Answer: A**

#### NEW QUESTION 36

You plan to deploy SharePoint Server 2016 for an organization. The default language for the installation is English.

You need to install multiple language packs on the SharePoint Server.

Which three actions should you perform in sequence? To answer, move the appropriate actions from the list of actions to the answer area and arrange them in the correct order.



Actions	Answer Area
Extract the language pack from the latest software updates download.	1 <input type="text"/>
Run serverlanguagepack.exe for the language pack.	2 <input type="text"/>
Run the SharePoint Products and Technologies Wizard.	3 <input type="text"/>
Run the SharePoint Products Configuration Wizard.	
Restart the SharePoint Server.	
Download the language pack.	

**Answer:**

**Explanation:** References: <https://docs.microsoft.com/en-us/sharepoint/install/install-or-uninstall-language-packs-0>

#### NEW QUESTION 41

You manage the term store for a company's on-premises SharePoint farm. You plan to replicate the production environment term store to a development environment.

When you attempt to export the term store from the production environment, you receive the following error message:

You do not have permission to use the bulk load statement. You need to complete the import of the term store.

What should you do?

- A. Add the SharePoint farm administrator account to the SQL Server security administrator role.
- B. Grant the FullControl permissions to the farm administrator account for the \\MySharedLocation\MMS folder.
- C. Use an account that has the SQL administrator role assigned to it to perform the task.
- D. Add the MMS Service account to the SQL Server bulk admin role.

**Answer:** B

#### NEW QUESTION 42

You administer a SharePoint farm.

A site administrator in the marketing department asks permission to view the site usage report. You add the user to the Usage Monitors SharePoint group. The administrator reports that the page fails to load and displays an Access Denied message.

You need to ensure that the marketing department site administrator can view the site usage report. Which List permission should you add?

- A. Override List Behaviors
- B. View Application Pages
- C. Manage Personal Views
- D. Use Remote Interfaces

**Answer:** B

#### NEW QUESTION 45

You are the SharePoint administrator for your organization. You have one web application named WebApp1 in the farm.



You need to prevent users from purchasing apps from the SharePoint Store while allowing users to request apps from the App Catalog.

Which three actions should you perform in sequence? To answer, move the appropriate actions from the list of actions to the answer area and arrange them in the correct order.

Create an App Catalog in the farm.	
Set the value of the <b>Should end users be able to get Apps from the SharePoint Store</b> option to <b>No</b> .	
Publish the app to the catalog site.	
Create an App Catalog site collection in WebApp1.	
Set the value of the <b>Should end users be able to get Apps from the SharePoint Store</b> option to <b>Yes</b> .	
Add the app to the catalog site.	

Answer:

Explanation:

Create an App Catalog in the farm.	Create an App Catalog in the farm.
Set the value of the <b>Should end users be able to get Apps from the SharePoint Store</b> option to <b>No</b> .	Create an App Catalog site collection in WebApp1.
Publish the app to the catalog site.	Set the value of the <b>Should end users be able to get Apps from the SharePoint Store</b> option to <b>No</b> .
Create an App Catalog site collection in WebApp1.	 
Set the value of the <b>Should end users be able to get Apps from the SharePoint Store</b> option to <b>Yes</b> .	
Add the app to the catalog site.	

**NEW QUESTION 47**

You provision and configure a new SharePoint farm. The farm has not been backed up. You need to back up all service applications in the farm. How should you complete the Windows PowerShell command? To answer, drag the appropriate Windows PowerShell segment to the correct location or locations. Each Windows PowerShell segment may be used once, more than once, or not at all. You may need to drag the split bar between panes or scroll to view content.

Windows PowerShell segments	Answer area
Differential	Backup- <span>PowerShell segment</span> -Directory \\srv01\backup\
Farm	-BackupMethod <span>PowerShell segment</span> -Item <span>PowerShell segment</span>
Farm\Shared Services	
Full	
SPConfigurationDatabase	
SPFarm	

**Answer:**

**Explanation:**



Windows PowerShell segments	Answer area
Differential	Backup- SPFarm -Directory \\srv01\backup\
Farm	-BackupMethod Full -Item Farm\Shared Services
Farm\Shared Services	
Full	
SPConfigurationDatabase	
SPFarm	

#### NEW QUESTION 50

Note: This question is part of a series of questions that present the same scenario. Each question in the series contains a unique solution that might meet the stated goals. Some question sets might have more than one correct solution, while others might not have a correct solution.

After you answer a question in this sections, you will NOT be able to return to it. As a result, these questions will not appear in the review screen.

You are the SharePoint administrator for a company.

The SharePoint environment is causing excessive information to be recorded in the diagnostic logs.

You need to configure the SharePoint farm to only write events to the Windows event log that are equal to or more severe than the Error level.

You run the following Windows PowerShell command: Set-SPDiagnosticConfig -errorReportingEnable

Does the solution meet the goal?

- A. Yes
- B. No

**Answer: B**

#### NEW QUESTION 53

Note: This question is part of a series of questions that present the same scenario. Each question in the series contains a unique solution that might meet the stated goals. Some question sets might have more than one correct solution, while others might not have a correct solution.

After you answer a question in this sections, you will NOT be able to return to it. As a result, these questions will not appear in the review screen.

You are the SharePoint administrator for a company.

Users report that pages from the human resources (HR) division site are taking a long time to render. You need to troubleshoot the reasons for the page rendering issues.

You examine the Unified Logging Service (ULS) logs for performance issues and resource usage information. Does the solution meet the goal?

- A. Yes
- B. No

**Answer: A**

#### NEW QUESTION 54

You are a SharePoint administrator for a company. You deploy OneDrive for Business on-premises. Files are explicitly shared with external users by sending email invitations

Users report that they cannot immediately view files in the OneDrive for Business Shared with Me view.

You need to ensure that users can view all files as they are shared while minimizing the changes to the current service topology.

What should you do?

- A. Enable the Recently Shared Items cache on the My Siteserver.
- B. Enable Continuous Crawl.
- C. Enable the Distributed Cache on all servers.
- D. Enable the Recently Shared Items cache on the Search server.

**Answer: A**

**Explanation:** References: <https://docs.microsoft.com/en-us/sharepoint/sites/set-up-onedrive-for-business>

#### NEW QUESTION 58

You are an administrator for a company. You manage the company's SharePoint environment. You also manage SQL Server and file system backups. All SQL instances run SQL Server 2014 SP1.

The data analytics team releases a custom reporting and analytics solution.

You need to provide a backup plan for the custom reporting and analytics solution.

In the table below, identify the component that you can back up for each backup method. Note: Make only one selection in each column. Each correct selection is worth one point.

Component	SQL Server backups	File system backups
Web Applications	<input type="radio"/>	<input type="radio"/>
Customizations not deployed as solution packages	<input type="radio"/>	<input type="radio"/>
SharePoint list items	<input type="radio"/>	<input type="radio"/>
SharePoint content databases	<input type="radio"/>	<input type="radio"/>
SQL Server Reporting Services databases	<input type="radio"/>	<input type="radio"/>

Answer:

Explanation:

Component	SQL Server backups	File system backups
Web Applications	<input type="radio"/>	<input checked="" type="radio"/>
Customizations not deployed as solution packages	<input type="radio"/>	<input checked="" type="radio"/>
SharePoint list items	<input type="radio"/>	<input checked="" type="radio"/>
SharePoint content databases	<input checked="" type="radio"/>	<input type="radio"/>
SQL Server Reporting Services databases	<input checked="" type="radio"/>	<input type="radio"/>

**NEW QUESTION 59**

A company uses SharePoint Online and SharePoint Server 2016 on-premises.  
You need to configure two-way federated search between SharePoint Online and SharePoint Server on-premises.  
How should you configure federated search? To answer, drag the appropriate option to the correct result source and remote providers. Each option may be used once, more than once, or not at all. You may need to drag the split bar between panes or scroll to view content.  
Note: Each correct selection is worth one point.

**Answer Area**

Products	Federated Search	Result source	Remote provider
SharePoint 2016	Outbound search	Product	Product
SharePoint Online	Inbound search	Product	Product

**Answer:**

**Explanation:**

**Answer Area**

Products	Federated Search	Result source	Remote provider
SharePoint 2016	Outbound search	SharePoint 2016	SharePoint Online
SharePoint Online	Inbound search	SharePoint Online	SharePoint 2016

#### NEW QUESTION 61

You manage a SharePoint Server. The operating system, Search index files, and blob cache are located on separate drives.

You observe the following issues:

- file lock out errors
- delays in indexing of content
- overall poor SharePoint Search performance
- occasional virus and malware warning

You determine that antivirus scans are causing the issues. You need to resolve the issues.

How should you configure antivirus scanning? To answer, select the appropriate options in the answer area.

NOTE: Each correct selection is worth one point.



Item	Action
Blob Cache folders	<div>▼</div> <div>exclude</div> <div>include</div>
Search index files	<div>▼</div> <div>exclude</div> <div>include</div>
Operating System files	<div>▼</div> <div>exclude</div> <div>include</div>

**Answer:**

**Explanation:** References:

<https://support.microsoft.com/en-us/help/952167/certain-folders-may-have-to-be-excluded-from-antivirus-scann>

#### NEW QUESTION 65

A company uses SharePoint2016 in a hybrid environment. You replace an administrator that has left the company.

A vendor notifies you that the SSL certificate that you purchased from the vendor is expired. The hybrid environment is not able to authenticate domain users that attempt to access it. When accessing the online environment by using a cloud user account, you observe that Search is not returning results from the entire farm. You need to locate the expired certificates and renew them.

What should you do? To answer, select the appropriate certificate type of location from each list in the answer area.

Note: Each correct selection is worth one point.

Issue	Certificate type	Location
Domain users are unable to access online resources.	<div>▼</div> <div>STS certificate wildcard SSL certificate secure channel certificate</div>	<div>▼</div> <div>Office 365 tenant reverse proxy server federation server domain controller</div>
SharePoint Online search queries are not returning expected results.	<div>▼</div> <div>STS certificate wildcard SSL certificate domain certificate</div>	<div>▼</div> <div>Office 365 tenant reverse proxy server federation server domain controller</div>

**Answer:**

**Explanation:**

Issue	Certificate type	Location
Domain users are unable to access online resources.	<div> <div>▼</div> <div>                     STS certificate wildcard SSL certificate secure channel certificate                 </div> </div>	<div> <div>▼</div> <div>                     Office 365 tenant reverse proxy server federation server domain controller                 </div> </div>
SharePoint Online search queries are not returning expected results.	<div> <div>▼</div> <div>                     STS certificate wildcard SSL certificate domain certificate                 </div> </div>	<div> <div>▼</div> <div>                     Office 365 tenant reverse proxy server federation server domain controller                 </div> </div>

#### NEW QUESTION 66

In this section, you will see one or more sets of questions with the same scenario and problem. Each question presents a unique solution to the problem, and you must determine whether the solution meets the stated goals. Any of the solutions might solve the problem. It is also possible that none of the solutions solve the problem.

Once you answer a question in this section you will NOT be able to return to it. As a result, these questions will not appear in the review screen.

Note: This question is part of a series of questions that present the same scenario. Each question in the series contains a unique solution. Determine whether the solution meets the stated goals.

You are the SharePoint administrator for a company.

You must provide an on-premises SharePoint solution that helps monitor and analyze your business in order to make informed business decisions that align with the objectives and strategies for the company. The solution must include the following features:

- Dashboards
- Scorecards
- Key Performance Indicators (KPI) You configure Delve.

Does the solution meet the goal?

- A. Yes
- B. No

**Answer:** B

**Explanation:** You need PerformancePoint Services which is a SharePoint BI tool. References:

[https://technet.microsoft.com/en-us/library/ee424392\(v=office.16\).aspx](https://technet.microsoft.com/en-us/library/ee424392(v=office.16).aspx)

#### NEW QUESTION 68

You are assisting Company1 in the development of a website that displays information about their products to customers on the Internet. Company1 web publishers will not have access to publish directly to the Internet site.

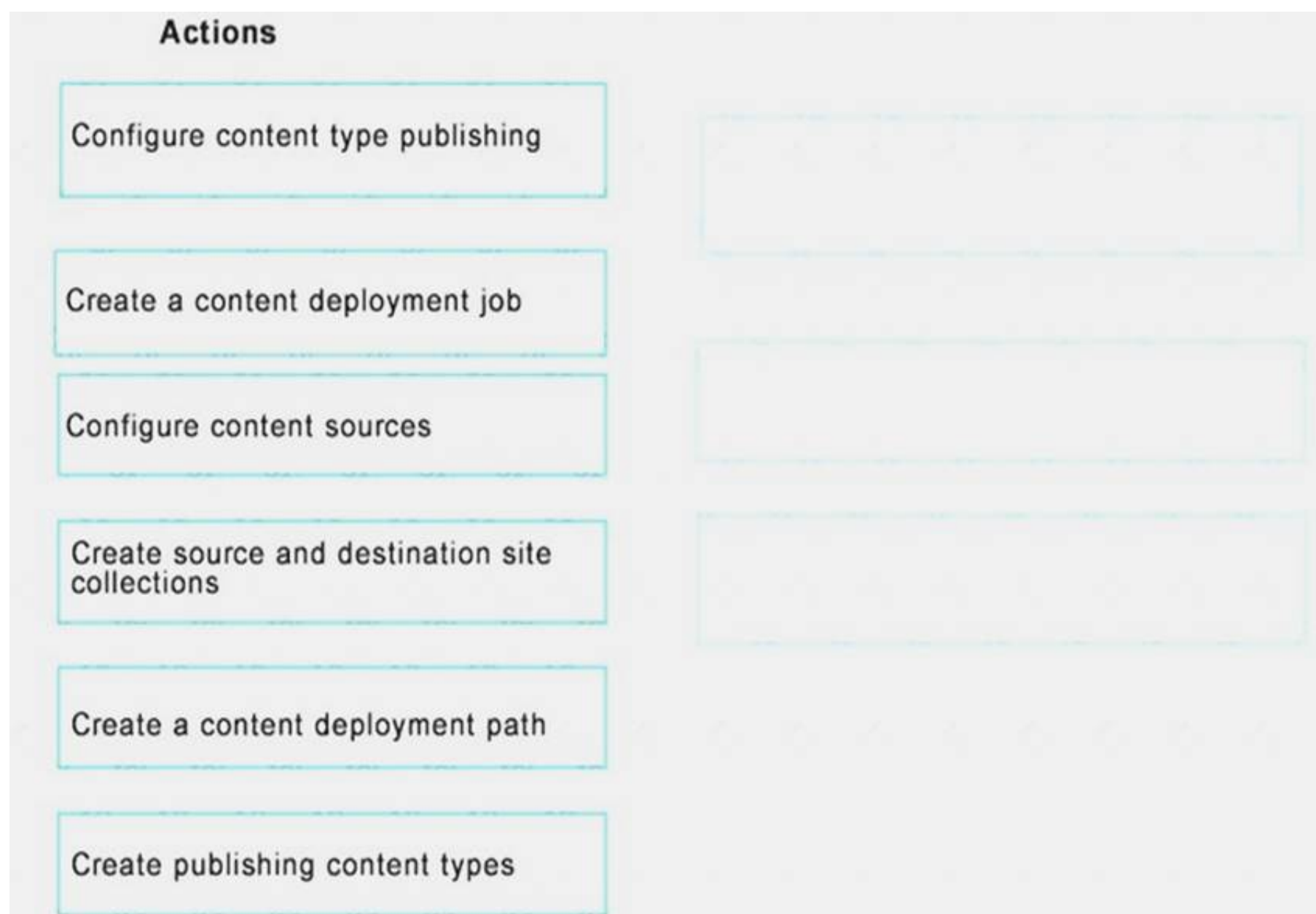
You have the following requirements:

- Web publishers must be able to update web pages from a SharePoint site collection that is only accessible on the Company1 internal network.
- Web page updates must be published on an automated basis to a SharePoint site collection that is accessible from the Internet.

You need to configure the website.

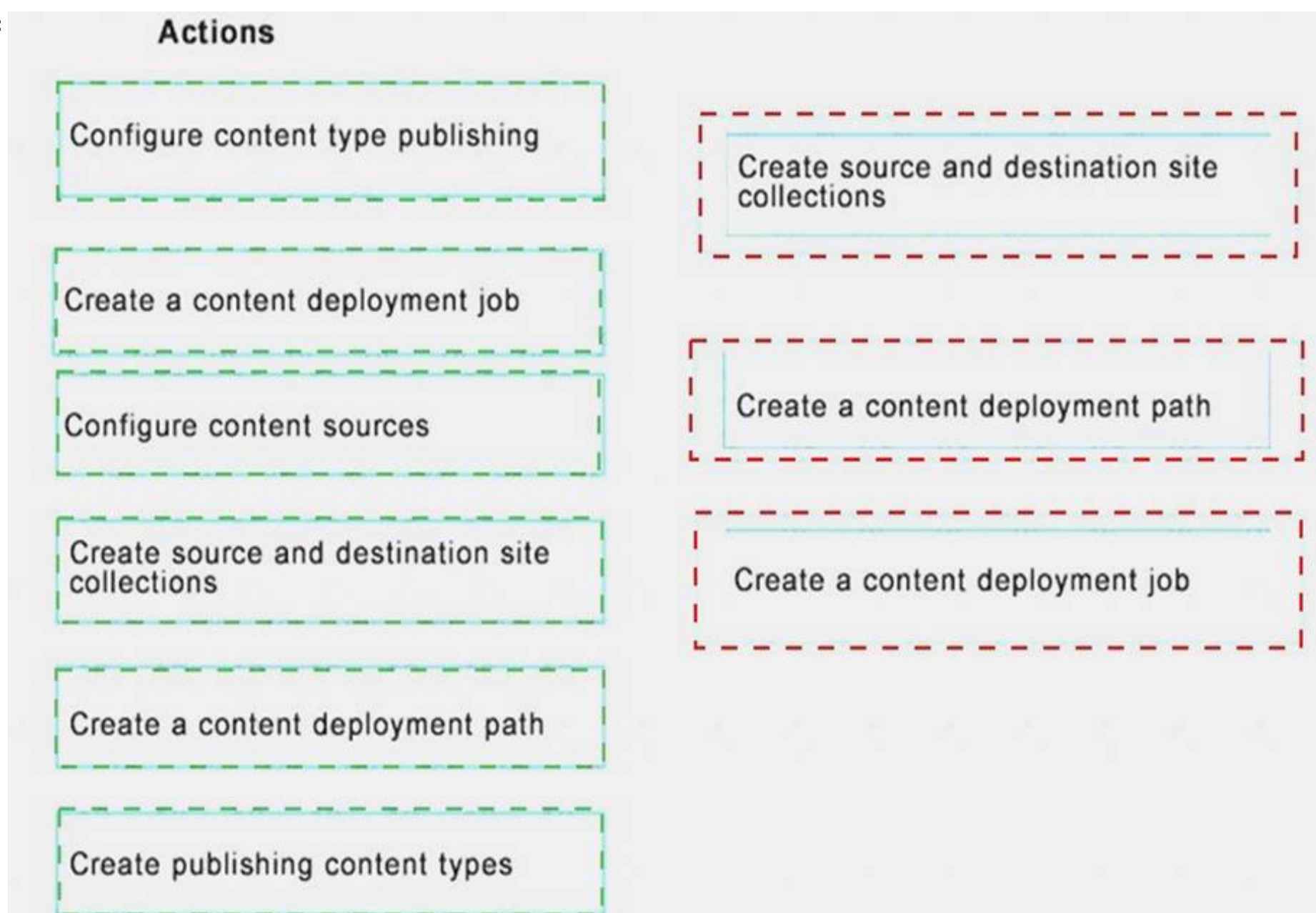
Which three actions should you perform in sequence? To answer, move the appropriate actions from the list of actions to the answer area and arrange them in the correct order.





Answer:

Explanation:



**NEW QUESTION 71**

You are the administrator for a SharePoint 2016 farm. You configure an App Catalog and a SharePoint Store.



Users report that they get an error when they try to add an app to their sites.  
You need to allow users to add apps from the SharePoint Store and ensure that all previously requested apps are added.  
For each requirement, what should you do?

Requirement	Action
Investigate the issue with adding errors	<div> <div>▼</div> <div>                     Configure SharePoint Store settings to allow end users to purchase apps                      Enable installation of apps that require accessible Internet-facing endpoints                      Set and enable the URL for the SharePoint app store                 </div> </div>
Install all apps requested by user	<div> <div>▼</div> <div>                     Purchase additional app licenses                      Approve user app requests that originate from the App Catalog                      Add apps that cannot be installed to a Monitored Apps list and analyze installation errors                      Collect the required apps list from users and add them manually                 </div> </div>

Answer:

Explanation:

Requirement	Action
Investigate the issue with adding errors	<div> <div>▼</div> <div>                     Configure SharePoint Store settings to allow end users to purchase apps                      Enable installation of apps that require accessible Internet-facing endpoints                      Set and enable the URL for the SharePoint app store                 </div> </div>
Install all apps requested by user	<div> <div>▼</div> <div>                     Purchase additional app licenses                      Approve user app requests that originate from the App Catalog                      Add apps that cannot be installed to a Monitored Apps list and analyze installation errors                      Collect the required apps list from users and add them manually                 </div> </div>

**NEW QUESTION 75**

Your organization sells products online. You store all product information in a secure Microsoft SQL Server database. Members of the online marketing team only access the database by using an online website administration application. The organization's sales and product development teams do not have direct access to database. Single sign-on is enabled in the environment.  
You identify the following requirements for the sales and product development teams:  
You need to provide access to the product database while leveraging out-of-the box SharePoint functionality. Which actions should you perform in sequence? To answer, select the appropriate options in the answer area.

## Answer Area

Step	Action
1	<div>▼</div> <div>Create a Secure Store target application that implements individual ticket mapping. Create a Secure Store target application that implements group mapping.</div>
2	<div>▼</div> <div>Create an external content type. Create a content type that is based on a Report Builder report.</div>
3	<div>▼</div> <div>Configure alternate access mappings. Configure Report Server. Create an external list.</div>

Answer:

Explanation:

## Answer Area

Step	Action
1	<div>▼</div> <div>Create a Secure Store target application that implements individual ticket mapping. Create a Secure Store target application that implements group mapping.</div>
2	<div>▼</div> <div>Create an external content type. Create a content type that is based on a Report Builder report.</div>
3	<div>▼</div> <div>Configure alternate access mappings. Configure Report Server. Create an external list.</div>

### NEW QUESTION 78

You are a SharePoint administrator for Contoso, Ltd. You are migrating a SharePoint 2010 farm to SharePoint 2016. The SharePoint 2010 farm has only classic mode web applications.

You observe that the WSS\_Content\_ProjectArchive content database is not attached to the SharePoint 2013 farm.

You need to migrate the SharePoint 2010 WSS\_Content\_ProjectArchive content database to an existing SharePoint 2013 claims-based web application named WebApp1

Which four actions should you perform in sequence? To answer, move all actions from the list of actions to the answer area and arrange them in the correct order.



Attach the WSS\_Content\_ProjectArchive content database to WebApp1.

Attach the WSS\_Content\_ProjectArchive content database to ClassicAuthApp.

Run the following Windows PowerShell command:

**Convert-SPWebApplication-Identity WebApp1-To Claims-RetainPermissions**

Run a Windows PowerShell script to convert WebApp1 to a classic mode web application while retaining permission settings.

Run the following Windows PowerShell command:

**New-SPWebApplication-name "ClassicAuthApp"-Port 100 -ApplicationPool "ClassicAuthAppPool" -ApplicationPoolAccount (Get-SPManagedAccount "contoso\User1")**

Attach the SharePoint 2010 project archive content database to ClassicAuthApp.

Run the following Windows PowerShell command:

**New-SPWebApplication-name "ClassicAuthApp"-Port 100 -ApplicationPool "ClassicAuthAppPool" -ApplicationPoolAccount (Get-SPManagedAccount "contoso\User1") -AuthenticationProvider (New-SPAuthenticationProvider)**

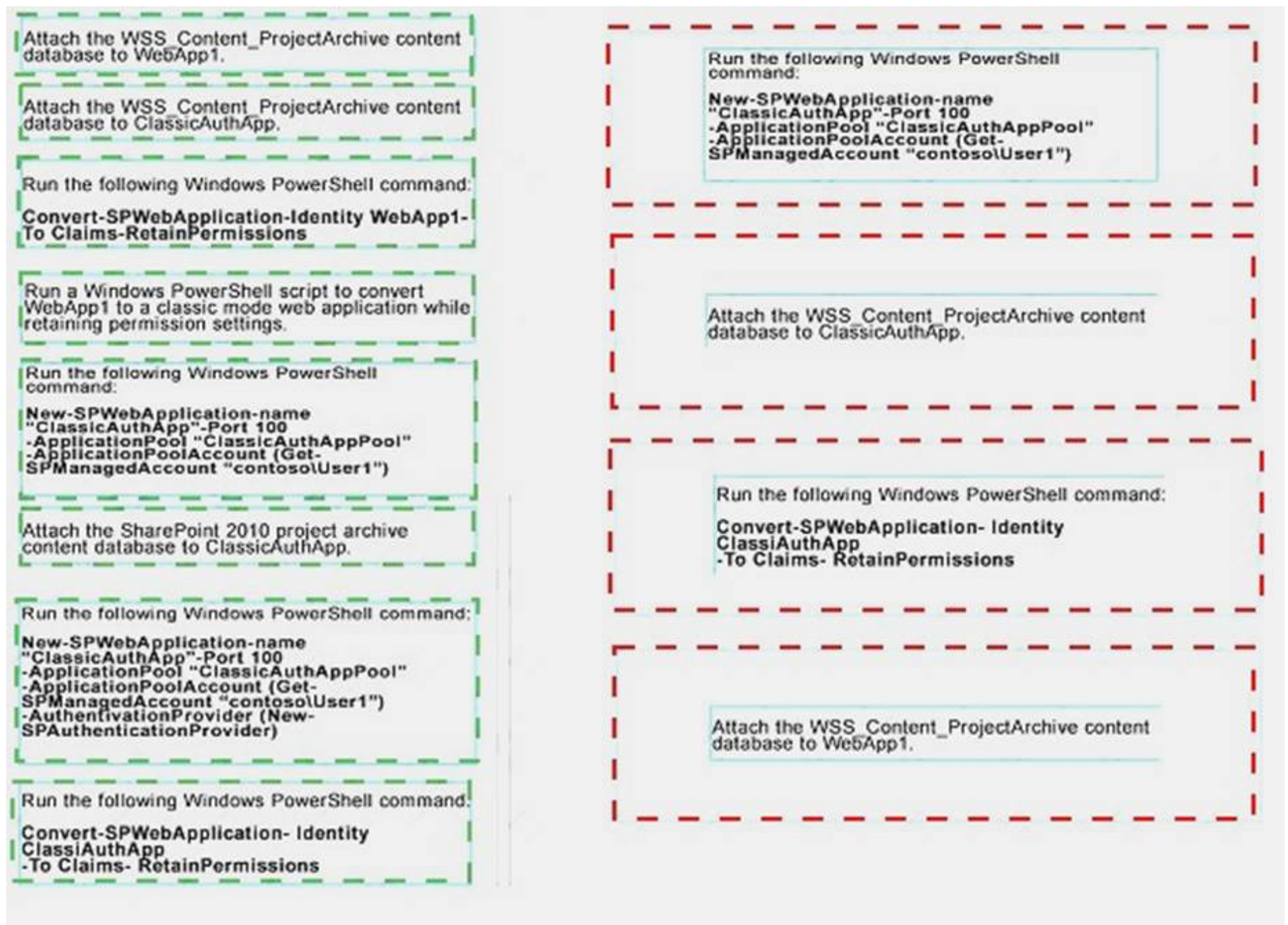
Run the following Windows PowerShell command:

**Convert-SPWebApplication- Identity ClassicAuthApp -To Claims- RetainPermissions**

Answer:

Explanation:





#### NEW QUESTION 79

You are customizing standard content types for an organization. For the tracking of a department, you must allow users to easily select or enter a value. In some cases, users may refer to a single department by more than one name. Users must be able to select or type any name for a department but the document must be associated with only one department. You need to create a column that supports the requirements. What should you do?

- A. Create a Choice site column that uses check boxes.
- B. Create a Choice site column that uses a drop-down menu.
- C. Create a Managed Metadata site column.
- D. Create a Choice list that uses a drop-downmenu.

**Answer:** B

**Explanation:** <http://en.share-gate.com/blog/start-learn-sharepoint-advanced-column-types>

#### NEW QUESTION 84

You manage a SharePoint environment. You need to block all ports on the SharePoint Servers that are not used for essential communications. To answer, drag the appropriate set of ports or port ranges to the correct service. Each set of ports or port ranges may be used once, more than once, or not at all. You may need to drag the split bar between the panes or scroll to view content. Note: Each correct selection is worth one point.

Ports and Protocols	Service	Ports and protocols
TCP 9354, TCP 9355, TCP 9356	Service Applications	Ports and Protocols
TCP 32843, TCP 32844, TCP 32845	People Search/ MIM	Ports and Protocols
TCP 5725	Search Index component	Ports and Protocols
TCP 16500-16519	Name resolution	Ports and Protocols
TCP/UDP 53	Kerberos	Ports and Protocols
TCP/UDP 88		
TCP 22233-22236		

Answer:

Explanation:

Ports and Protocols	Service	Ports and protocols
TCP 9354, TCP 9355, TCP 9356	Service Applications	TCP 32843, TCP 32844, TCP 32845
TCP 32843, TCP 32844, TCP 32845	People Search/ MIM	TCP 5725
TCP 5725	Search Index component	TCP 16500-16519
TCP 16500-16519	Name resolution	TCP/UDP 53
TCP/UDP 53	Kerberos	TCP/UDP 88
TCP/UDP 88		
TCP 22233-22236		

#### NEW QUESTION 88

Your development team deploys a new SharePoint Store app that interacts with the user by using an FRAME. When the user loads a SharePoint page, the IFRAME is empty.

You need to ensure that the SharePoint Store app loads properly.

How should you configure authentication and authorization for the app? To answer, select the appropriate option from each list in the answer area.

Authentication	Authorization
<div> <div>▼</div> <div> Self-signed certificate  Microsoft Azure Active Directory Control </div> </div>	<div> <div>▼</div> <div> user permissions  app and user permissions </div> </div>

Answer:

Explanation:



Authentication	Authorization
<div> <div>Self-signed certificate</div> <div>Microsoft Azure Active Directory Control</div> </div>	<div> <div>user permissions</div> <div>app and user permissions</div> </div>

#### NEW QUESTION 91

A SharePoint 2016 farm includes an on-premises Enterprise Search application. You are configuring a search application crawl schedule for a Local SharePoint Sites content source.

You must configure the crawl to occur at set intervals of five minutes.

You need to ensure that crawls do not prevent users from searching recently added or changed items.

How should you complete the Windows PowerShell commands? To answer, select the appropriate Windows PowerShell segments from each list in the answer area.

#### Answer Area

```
$ssa = Get-SPEnterpriseSearchServiceApplication
$cs = Get-SPEnterpriseSearchCrawlContentSource -SearchApplication'
$ssa -Identity "Local SharePoint sites"
Set-SPEnterpriseSearchCrawlContentSource -Identity $cs
$ssa.SetProperty(" ,5)
```

- IncrementalCrawlInterval
- CrawlScheduleRepeatInterval
- ContinuousCrawlInterval
- CrawlScheduleRunEveryInterval

- ScheduleType Incremental - CrawlPriority 1
- EnableContinuousCrawls \$True
- ScheduleType Incremental

Answer:

Explanation:

#### Answer Area

```
$ssa = Get-SPEnterpriseSearchServiceApplication
$cs = Get-SPEnterpriseSearchCrawlContentSource -SearchApplication'
$ssa -Identity "Local SharePoint sites"
Set-SPEnterpriseSearchCrawlContentSource -Identity $cs
$ssa.SetProperty(" ,5)
```

- IncrementalCrawlInterval
- CrawlScheduleRepeatInterval
- ContinuousCrawlInterval
- CrawlScheduleRunEveryInterval

- ScheduleType Incremental - CrawlPriority 1
- EnableContinuousCrawls \$True
- ScheduleType Incremental

#### NEW QUESTION 92

You are the SharePoint administrator for a company that manufactures and sells computer hardware components. You plan to create a public-facing website that allows customers to search for and purchase components.

Customers must be able to navigate the website by component type, and then further refine searches by the operating systems that the components support. The URL that displays when a customer selects an item must indicate the component type. The URL must not display the full path to the page.

You need to implement a SharePoint site that allows customers to find the appropriate parts.

Which SharePoint site template and metadata feature should you use? To answer, select the appropriate option from each list in the answer area.



Answer area

SharePoint object	Selection
Site template	<div><div></div><div>Project Enterprise Publishing Record Center</div></div>
Metadata feature	<div><div></div><div>Open term set Cross-farm Managed Metadata service subscription Enterprise keywords Friendly URL</div></div>

Answer:

Explanation: Answer area

SharePoint object	Selection
Site template	<div><div></div><div>Project Enterprise Publishing Record Center</div></div>
Metadata feature	<div><div></div><div>Open term set Cross-farm Managed Metadata service subscription Enterprise keywords Friendly URL</div></div>

NEW QUESTION 96

During the upgrade from SharePoint2013to SharePoint2016, you discover there is a missing feature. You review the logs and observe the following error message:  
Message: Database [WSS\_Contoso\_OR01] has reference(s) to a missing feature: Id= [4be9a980-965f-486f-9eda-074e284875d7].  
Remedy: The feature with Id 4be9a980-965f-486f-9eda-074e284875d7 is referenced in the database [WSS\_Contoso\_OR01], but is not installed on the current farm.  
The missing feature may cause upgrade to fail. Please install any solution which contains the feature and restart upgrade if necessary.  
You need to identify the page that is missing the feature. Which of the following will identify the page?

A. On the SharePoint Server, run the following Windows PowerShellcommand:Test-SPContentDatabase-Narne SdbName-WebApplication \$wa| Select Category, Message |Where {\$\_.Category-eq "MissingFeature"}  
B. On the SharePoint Server, run the following Windows PowerShellcommand:Test-SPContentDatabase-Name SdbName-WebApplication \$wa| Select Category, Message | Where{\$\_.Category-eq "MissingSetupFile"}  
C. On the SQL Server, run the following SQL syntax against WSS\_Contoso\_OR01 :SELECT FeatureId, FullURL From WebsInner JOIN FeaturesOnWebs.Id=Features.WebIdWHEREFeatureId='4be9a980-965f-486f-9eda-074e284875d7'ORDERBYFeatur  
D. On the SharePoint Server, review the Health Analyzer and find the missing dependencies.

Answer: A

**NEW QUESTION 97**

Note: This question is part of a series of questions that present the same scenario. Each question in the series contains a unique solution that might meet the stated goals. Some question sets might have more than one correct solution, while others might not have a correct solution.

After you answer a question in this sections, you will NOT be able to return to it. As a result, these questions will not appear in the review screen.

You are the SharePoint administrator for a company.

Users report that pages from the human resources (HR) division site are taking a long time to render. You need to troubleshoot the reasons for the page rendering issues.

You analyze the SharePoint health reports. Does the solution meet the goal?

- A. Yes
- B. No

**Answer:** A

**NEW QUESTION 98**

A company has an on-premises SharePoint farm. The company also uses SharePoint Online. Employees must be able to access on-premises sites and SharePoint Online resources.

You must use single sign-on (SSO). You need to configure authentication.

Which three options should you configure? Each correct answer presents part of the solution.

- A. Windows Azure directory synchronization without Password Sync
- B. server to server authentication
- C. Active Directory Federation Services 2.0 with SSO
- D. forward proxy configuration
- E. Windows Azure directory synchronization with Password Sync

**Answer:** CDE

**NEW QUESTION 101**

You are a SharePoint administrator for Contoso, Ltd. You manage an on-premises SharePoint environment. A user named User1 is the site collection administrator for the Human Resources (HR) site. User1 leaves the company and is replaced with a user named User2.

Access requests for the HR SharePoint site are still being sent to User1. You need to ensure that User2 receives all access requests to the HR site.

How should you complete the Windows PowerShell commands? To answer, select the appropriate Windows PowerShell segment from each list in the answer area.

\$obj= ▼ http://contoso.com/sites/HR

Get-SPSite  
Get-SPWeb  
Get-SPSiteUrl

\$obj.RequestAccessEmail= "User2@contoso.com"

▼

\$obj Update()  
Set-SPSite  
Set-SRWeb  
Set-SPSiteURL  
\$obj Close()

**Answer:**

**Explanation:**

\$obj=

Get-SPSite  
Get-SPWeb  
Get-SPSiteUrl

\$obj.RequestAccessEmail= "User2@contoso.com"

\$obj Update()  
Set-SPSite  
Set-SRWeb  
Set-SPSiteURL  
\$obj Close()

**NEW QUESTION 104**

Note: This question is part of a series of questions that present the same scenario. Each question in the series contains a unique solution that might meet the stated goals. Some question sets might have more than one correct solution, while others might not have a correct solution.

After you answer a question in this sections, you will NOT be able to return to it. As a result, these questions will not appear in the review screen.

You are the SharePoint administrator for a company.

The SharePoint environment is causing excessive information to be recorded in the diagnostic logs.

You need to configure the SharePoint farm to only write events to the Windows event log that are equal to or more severe than the Error level.

You run the following Windows PowerShell command: Set-SPLogLevel -EventSeverity Error

Does the solution meet the goal?

A. Yes

B. No

**Answer: A**

**NEW QUESTION 108**

You upgrade a company's SharePoint 2013 farm to SharePoint 2016. You are responsible for optimizing the performance of the SharePoint 2016 farm.

You must improve page load performance and implement PerformancePoint in the farm. You need to deploy additional MinRole servers in the environment.

For each requirement, which MinRole role should you implement? To answer, drag the appropriate MinRole role to the correct requirement. Each role may be used once, more than once, or not at all. You may need to drag the split bar between panes or scroll to view content.

NOTE: Each correct selection is worth one point.

MinRole roles	Answer area	
	Requirement	MinRole role
Application	Improve page load performance	MinRole role
Search	Implement PerformancePoint	MinRole role
SingleServer		
Distributed Cache		
Custom		
Front-end web		



**Answer:**

**Explanation:** References:

<https://blogs.technet.microsoft.com/wbaer/2015/09/18/distributed-cache-in-sharepoint-server-2016-it-preview/>

**NEW QUESTION 112**

You are a SharePoint administrator for Contoso, Ltd. You manage a large SharePoint Server farm. You configure a single SharePoint Search application for the farm. The Search Service application has five crawl databases. All crawl databases have content.

Contoso would like to crawl content from a partner company named WingTip Toys. This crawled content must be stored in a dedicated crawl database.

You need to configure the environment. What should you do?

- A. Provision a new Search Server for the existing Search Service applicatio
- B. Add dedicated crawl components for WingTip Toys to the new Search Server.
- C. Create a dedicated Microsoft SQL Server instance for the WingTip crawl database.
- D. Add a crawl database to the existingSearch Service application.
- E. Provision a new Search Service applicatio
- F. Configure the Search Service application to crawl WingTip Toys content.

**Answer:** C

**Explanation:** Maximum crawl databases per Search Service application increased from 5 to 15 in SharePoint 2016. References:

[https://technet.microsoft.com/en-gb/library/cc262787\(v=office.16\).aspx](https://technet.microsoft.com/en-gb/library/cc262787(v=office.16).aspx)

**NEW QUESTION 117**

You plan to install SharePoint Server 2016 in a new environment. You need to install the SharePoint Server prerequisite components.

For each prerequisite installation method, which tool or command line utility should you use?

Install from a network share	
	<div>Setup.exe PrerequisiteInstaller.exe SharePoint Products Configuration Wizard Microsoft SharePoint Products and Technologies 2016 Preparation Tool</div>

Install from the Internet	
	<div>Setup.exe PrerequisiteInstaller.exe SharePoint Products Configuration Wizard Microsoft SharePoint Products and Technologies 2016 Preparation Tool</div>

**Answer:**

**Explanation:**

Install from a network share

▼

Setup.exe

PrerequisiteInstaller.exe

SharePoint Products Configuration Wizard

Microsoft SharePoint Products and Technologies 2016 Preparation Tool

Install from the Internet

▼

Setup.exe

PrerequisiteInstaller.exe

SharePoint Products Configuration Wizard

Microsoft SharePoint Products and Technologies 2016 Preparation Tool

NEW QUESTION 120

Note: This question is part of a series of questions that present the same scenario. Each question in the series contains a unique solution that might meet the stated goals. Some question sets might have more than one correct solution, while others might not have a correct solution. After you answer a question in this sections, you will NOT be able to return to it. As a result, these questions will not appear in the review screen. You manage an on-premises SharePoint Server 2016 farm and SharePoint Online. You plan to deploy a SharePoint Search solution. The solution must meet the following requirements: You customize search schema for content stored on on-premises at the site collection level. Does the solution meet the goal?

- A. Yes
- B. No

Answer: B

NEW QUESTION 124

You administer a SharePoint 2016 farm. You plan to implement My Site functionality. You need to configure the schedules for the timer jobs related to My Sites. For each job, which service should you modify? To answer, select the appropriate service from each list in the answer area.

Answer Area

Service	Job to modify
Microsoft SharePoint Founda- tion Web Application	<div>▼</div> <div> <div>My Site cleanup job</div> <div>Notification job</div> <div>Timer service recycle job</div> </div>
Microsoft SharePoint Founda- tion Timer Service	<div>▼</div> <div> <div>User Profile to SharePoint quick synchronization</div> <div>User Profile to SharePoint full synchronization</div> <div>User Profile service application - user profile change</div> </div>

Answer:

Explanation:

# Answer Area

Service	Job to modify
Microsoft SharePoint Founda- tion Web Application	<div>▼</div> <div>My Site cleanup job</div> <div>Notification job</div> <div>Timer service recycle job</div>
Microsoft SharePoint Founda- tion Timer Service	<div>▼</div> <div>User Profile to SharePoint quick synchronization</div> <div>User Profile to SharePoint full synchronization</div> <div>User Profile service application - user profile change</div>

## NEW QUESTION 125

You have a SharePoint Online environment. You enable the Delve feature. The human resources (HR) team is concerned that private, sensitive documents from the HR team site are appearing in Delve. You have created a HideFromDelve column in the library and the documents continue to appear in Delve. The column is a Yes/No type and every item in the library must have a value. You need to perform steps to configure Delve to show only specific documents and update existing items in the library with minimum effort. Which three actions should you perform in sequence? To answer, move the appropriate actions from the list of actions to the answer area and arrange them in the correct order.

### Actions

Re-index the document library.

Reset the crawl index.

Do not specify a default value for the site column.

Create a new crawl property named **ows\_HideFromDelve**.

Set the default value for the site column to **No**.

Update the value of the HideFrom-Delve property for each item.

Set the default value for the site column to **Yes**.

### Answer Area

◀

▶

⬆

⬇

Answer:

Explanation: References:  
<http://www.learningsharepoint.com/2016/06/23/how-to-hide-documents-from-delve-office-365/>

## NEW QUESTION 126

Note: This question is part of a series of questions that present the same scenario. Each question in the series contains a unique solution that might meet the stated goals. Some question sets might have more than one correct solution, while others might not have a correct solution. After you answer a question in this sections, you will NOT be able to return to it. As a result, these questions will not appear in the review screen.



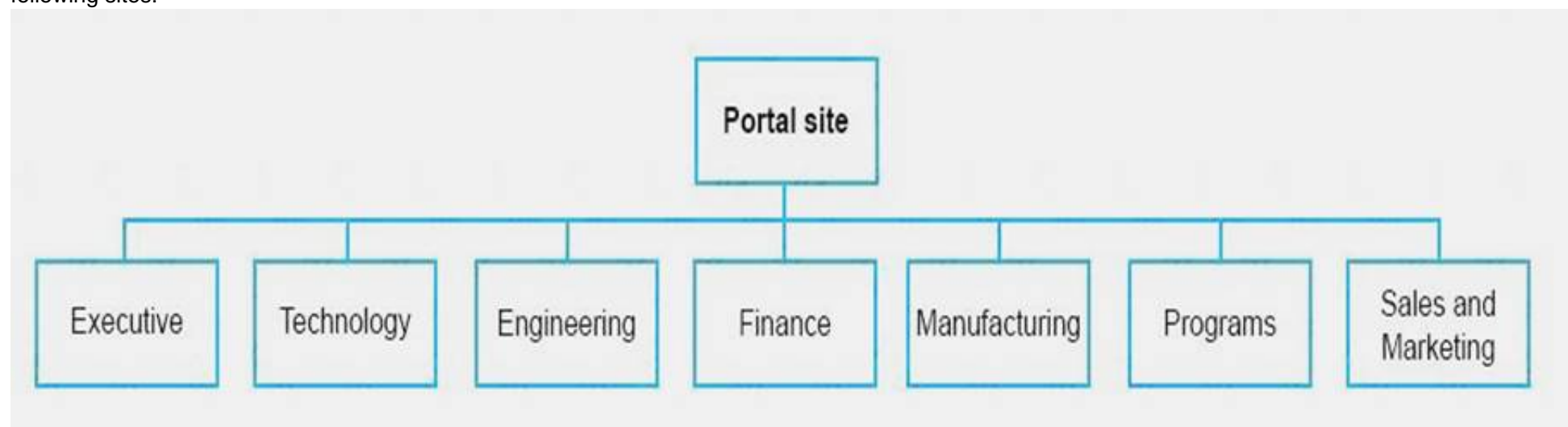
You are the SharePoint administrator for a company.  
The SharePoint environment is causing excessive information to be recorded in the diagnostic logs.  
You need to configure the SharePoint farm to only write events to the Windows event log that are equal to or more severe than the Error level.  
You run the following Windows PowerShell command: Set-SPUsageService -LoggingEnabled \$true  
Does the solution meet the goal?

- A. Yes
- B. No

**Answer: B**

#### NEW QUESTION 129

You are the SharePoint administrator for a company. You plan to deploy the SharePoint sites that will be accessible from the company portal. You create the following sites:



A user named User1 will manage the sites. You must prevent all users except for User1 from creating sites and subsites. User1 must be able to delegate management of List permissions to other users. You designate a user in each division as a lead for that division's site. You need to allow the designated lead in a division to manage their division's site while minimizing administrative effort. What should you do?

- A. For each site, add the designated divisional user account to the Team owners group for that divisions' site.
- B. Add all divisional user accounts to the portal site's Team Owners group.
- C. Create a new SharePoint group on the Portal site named SP Division Manager
- D. Grant the Designpermission to the group and add all designated divisional lead user accounts into the group.
- E. Add the designated divisional user account for each divisional site and grant each user the Design permission.
- F. Add all the designated divisional user account to the portal site and grant each user the Design permission.

**Answer: D**

#### NEW QUESTION 132

Note: This question is part of a series of questions that present the same scenario. Each question in the series contains a unique solution that might meet the stated goals. Some question sets might have more than one correct solution, while others might not have a correct solution.

After you answer a question in this sections, you will NOT be able to return to it. As a result, these questions will not appear in the review screen.

You are the SharePoint administrator for a company.

You must provide an on-premises SharePoint solution that helps monitor and analyze your business in order to make informed business decisions that align with the objectives and strategies for the company. The solution must include the following features:

You install and configure PerformancePoint Services. Does the solution meet the goal?

- A. Yes
- B. No

**Answer: A**

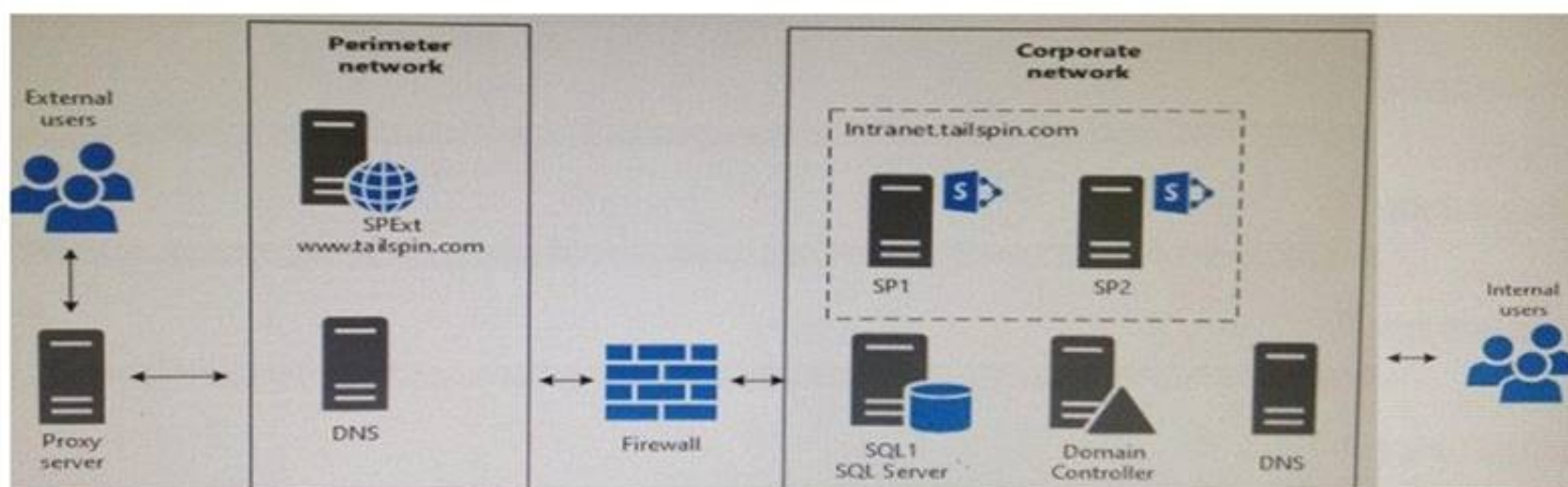
**Explanation:** Topic 2, Tailspin Toys

Background

Tailspin Toys manufactures and sells toys and games. The company also resells board games. The new chief executive officer (CEO) recently launched an effort to update the company's information technology (IT) infrastructure. The CEO wants a blog site to provide updates in plain text about the progress of company projects and the overall health of the company to employees. Content from this site will be used to populate some content on the internet-facing site.

You hire a consultant to design and deploy a SharePoint farm. The company plans to use the farm to create internal collaboration sites, and e-commerce site, and a place to display public announcements.

The following diagram shows the topology of the SharePoint farm:



## General

You must create a separate site collection for each department. You must base each site collection on the Team site template. The direct URL for each site collection must use the following format:

<http://departmentname.tailspin.com>.

You must place the site collections for all departments in the same web application, if possible. You must place the site collection for departments that have unique requirements in separate web applications.

## Business continuity

You identify the following requirements related to continuity of the business:

- All SharePoint services must be highly available.
- The SharePoint environment must be able to withstand the failure of a single system without affecting accessibility.

You must monitor the SharePoint environment to ensure that systems are available and that response times meet service level agreements (SLAs). In the event the times are not within the required thresholds, the system must alert SharePoint administrators. You must create a site that allows department managers to view the performance data that has been collected. The use of additional monitoring software will be performed where it can be justified.

## Governance and security

### Governance requirements

- Marketing department employees may create team sites. All other sites must be created by members of the information technology (IT) administration staff.
- You must handle requests for new sites by using a Help Desk site on SharePoint
- The corporate taxonomy must be managed by the SharePoint administrative staff. Users must not be allowed to create their own information architecture.

Exceptions to this requirement will be handled on a case by case basis.

- All information in SharePoint must be consistently identified and readily accessible by using searches. Search components must be configured to provide the best search results while minimizing administrative overhead.

### Security requirements

Anonymous access is only permitted for Internet-facing sites. Authentication is required for all sites. Authentication must occur through the Active Directory Domain Services environment. All custom apps must be installed and managed by the SharePoint administrative staff. Any requests for new apps must be submitted through the Help Desk site.

### Hardware and storage

#### Hardware requirements

You must minimize the number of servers and applications whenever possible. You must only deploy additional servers and applications if the requesting department manager provides the appropriate documentation to support the need.

#### File storage requirements

Content must not be stored in the perimeter network. All access to SharePoint content from the Internet must be handled through servers in the perimeter network. Human resources (HR) data must be kept separate from all other data.

## HR department

The HR manager needs a website to implement time management and leave requests. The HR manager has found an app that will provide this functionality on a SharePoint independent software vendor website, and would prefer to use this app as opposed to creating a custom in-house app. This app will only need to access to data in the HR site collection.

You must create a site for the HR department that allows new employees to read required documents regarding policies and procedures. The site must also provide all employees access to other HR documentation such as the employee handbook, employee leave procedures, and acceptable use guides.

## IT department

You must implement a Help Desk website and associated workflows. To create the site, you must access data from a Microsoft Excel workbook into a SQL Server database by using an SQL Server Integration Services (SSIS) package. You must access data from other data sources.

Employees must be able to fill out a help request on the site and then check the status of the request. The IT department staff must be able to respond to the requests, update the status of requests, and close requests. IT department managers must be able to track the status of requests, and generate reports on the progress of requests.

## Marketing department

### Collaboration sites

Marketing department employees must be able to create their own collaboration sites in SharePoint. The collaboration sites will be used for new product release discussions and marketing plans related to those new products. The URL for the collaboration sites must use the format: /products/productname.

### Custom terms

The marketing department must be able to use custom terms when identifying marketing strategies. Other departments must not be able to use custom terms. This requirement has been approved by management.

### Public-facing sites

You must create a site for the marketing department that provides information to potential customers about the current product line and any products in development. The marketing team must be able to access this site by using their mobile devices.

## Sales department

The sales manager needs a site to display sales progress data. The site must include KPIs and metrics that are generated by using information from a database stored on a SQL Server. Sales department employees are often away from the office. They must be able to access SharePoint data from external locations and when they are offline. Sales department employees need a site that customers can access to purchase products and check on the status of orders.

## NEW QUESTION 137

Note: This question is part of a series of questions that present the same scenario. Each question in the series contains a unique solution. Determine whether the solution meets the stated goals.

You need to monitor the environment.

You configure System Center Operations Manager 2012 R2 with a web application monitor. Does the solution meet the goal?

- A. Yes.
- B. No.

**Answer: A**

## NEW QUESTION 140

You need to obtain the external data required for the Help Desk website.

What should you use?

- A. Business Data Connectivity Services application
- B. an Office 365 REST endpoint
- C. Microsoft Power BI
- D. a Content Query web part

**Answer: A**

**NEW QUESTION 142**

You need to monitor the environment.

You run the following Windows PowerShell cmdlet: Set-SPDiagnosticConfig

Does this solution meet the goal?

- A. Yes
- B. No

**Answer:** B

**NEW QUESTION 145**

You need to implement the HR department site collection. What should you do first?

- A. Create a wildcard inclusion managed path in the HR web application.
- B. Create a web application for the HR department.
- C. Create a wildcard inclusion managed path in the web application for the departments.
- D. Create a content database in the web application for the departments.

**Answer:** B

**NEW QUESTION 147**

You need to monitor the environment.

You create a performance data collector set. Does this solution meet the goal?

- A. Yes
- B. No

**Answer:** A

**NEW QUESTION 149**

You need to deploy the HR app.

Which options should you recommend? To answer, select the appropriate setting from each list in the answer area.

Deployment component	Option
Method	<div> <div></div> <div> <p>The site owner must add the app from a list of available apps for the site. The site owner must add the app from the App Catalog. The SharePoint administrator must add the app from the SharePoint Store The SharePoint administrator must install the app by using Windows PowerShell.</p> </div> <div></div> </div>
App permission request scope	<div> <div></div> <div> <p>SPSite SPWeb SPList Tenancy</p> </div> <div></div> </div>

**Answer:**

**Explanation:**



Deployment component	Option
Method	<div> <div></div> <div> <p>The site owner must add the app from a list of available apps for the site.  The site owner must add the app from the App Catalog.  The SharePoint administrator must add the app from the SharePoint Store  The SharePoint administrator must install the app by using Windows PowerShell.</p> </div> <div></div> </div>
App permission request scope	<div> <div> <div>SPSite</div> <div>SPWeb</div> <div>SPList</div> <div>Tenancy</div> </div> <div></div> </div>

#### NEW QUESTION 152

You need to configure the web application that will support the marketing department collaboration sites. What should you implement?

- A. an alternate access mapping for each productname value
- B. a wildcard inclusion managed path
- C. an explicit inclusion managed path
- D. a new web application for each productname value

**Answer: B**

#### NEW QUESTION 157

You need to implement the site collection for the sales department. What should you do?

- A. In Central Administration, create a web application for the department site
- B. Then, create the sales site collection.
- C. Create a web application for the department site
- D. Then, run the following Windows PowerShell commands: New-SPWebApplication –Name “Tailspin Toys Departments” –Port 80 –Host Headerdepartments.tailspin.com –URL “http://departments.tailspin.com”-ApplicationPool “TailspinAppPool”New-SPSite ‘http://sales.tailspin.com’–HostHeaderWebApplication‘http://departments.tailspin.com’ – Name ‘Sales’ -Description ‘Sales Department Site’-OwnerAlias ‘tailspin\administrator’-Language 1033 -Template ‘STS#0’
- E. In Central Administration, create a web application for sales departmen
- F. Then, run the following Windows PowerShell commands: New-SPSite ‘http://sales.tailspin.com’–HostHeaderWebApplication‘http://Sales.tailspin.com’ – Name ‘Sales’ -Description ‘Sales Department Site’-OwnerAlias ‘tailspin\administrator’-Language 1033 -Template ‘STS#0’
- G. In Central Administration, create a web application for the sales department sites and enable Self-Service Site Creatio
- H. Then, run the following Windows PowerShell commands: New-SPSite ‘http://sales.tailspin.com’ –HostHeaderWebApplication‘http://Sales.tailspin.com’ – Name ‘Sales’-Description ‘Sales Department Site’-OwnerAlias ‘tailspin\administrator’-Language 1033 -Template ‘STS#0’

**Answer: C**

#### NEW QUESTION 159

You need to create a new farm. What should you do?

- A. Run the following Windows PowerShell cmdlet: New-SPCentralAdministration
- B. Run Setup and then run the SharePoint Configuration Wizard.
- C. Run the following Windows PowerShell cmdlet: Connect-SPConfigurationDatabase
- D. Run the following Windows PowerShell cmdlet: New- SPConfigurationDatabase

**Answer: B**

#### NEW QUESTION 161

You need to monitor the resources for the Beijing office.

Which three components should you implement? Each correct answer presents part of the solution.

- A. search
- B. proxy settings
- C. Distributed Cache
- D. SAML authentication

E. claims authentication

**Answer:** BDE

**NEW QUESTION 166**

You need to ensure that users can share sales data.

For each authentication method, which option should you use? To answer, drag the appropriate option to the correct authentication method. Each option may be used once, more than once, or not at all. You may need to drag the split bar between panes or scroll to view content.

Note: Each correct selection is worth one point.

Options	Authentication method	Option
S2S authentication	Account for Office Online Services	Option
SAML authentication	Authentication for Excel Online	Option
oData authentication	Authentication for PowerPivot	Option
network Service account		
Local Administrator account		
Authenticated users		

**Answer:**

**Explanation:**

Options	Authentication method	Option
S2S authentication	Account for Office Online Services	network Service account
SAML authentication	Authentication for Excel Online	Authenticated users
oData authentication	Authentication for PowerPivot	Authenticated users
network Service account		
Local Administrator account		
Authenticated users		

**NEW QUESTION 171**

You need to create the managed paths for all site collections.  
 For each site collection, which inclusion type should you use? To answer, select the appropriate inclusion type from each list in the answer area.

Site collection	Inclusion type
Corporate	<div> <div></div> <div>Explicit Wildcard</div> </div>
IT	<div> <div></div> <div>Explicit Wildcard</div> </div>
Finance	<div> <div></div> <div>Explicit Wildcard</div> </div>
Trading	<div> <div></div> <div>Explicit Wildcard</div> </div>
Manufacturing	<div> <div></div> <div>Explicit Wildcard</div> </div>



Answer:

Explanation:

Site collection	Inclusion type
Corporate	<div><div></div><div>Explicit Wildcard</div></div>
IT	<div><div></div><div>Explicit Wildcard</div></div>
Finance	<div><div></div><div>Explicit Wildcard</div></div>
Trading	<div><div></div><div>Explicit Wildcard</div></div>
Manufacturing	<div><div></div><div>Explicit Wildcard</div></div>

NEW QUESTION 175

Note: This question is part of a series of questions that present the same scenario. Each question in the series contains a unique solution that might meet the stated goals. Some question sets might have more than one correct solution, while others might not have a correct solution. After you answer a question in this sections, you will NOT be able to return to it. As a result, these questions will not appear in the review screen. You need to design a logical architecture for the procurement team site. You implement metadata navigation for each library. Does the solution meet the goal?

- A. Yes
- B. No

Answer: B

NEW QUESTION 176

You implement a solution that uses a single document library. Does the solution meet the goal?

- A. Yes
- B. No

Answer: A

NEW QUESTION 181

Once you answer a question in this section, you will NOT be able to return to it. As a result, these questions will not appear in the review screen. Note: This question is part of a series of questions that present the same scenario. Each question in the series contains a unique solution. Determine whether the solution meets the stated goals. You need to display the values for the Document Status and Department properties. You configure variations on the site. Does the solution meet the goal?

- A. Yes
- B. No

Answer: B

**Explanation:** The requirement is to change the values of metadata field settings from a single location and changes to the settings should be applied to all the site collections and existing documents. So Term Set and Managed Metadata column is the preferred way to implement the Document Status and Department properties.

#### NEW QUESTION 185

You need to configure SharePoint to support the required common document properties. Which two actions should you perform? Each correct answer presents part of the solution.

- A. Activate the Metadata Navigation and Filtering feature.
- B. In each site collection, define content types and site columns.
- C. Create a site collectio
- D. Define content types and site columns.
- E. Activate the Content Type Syndication Hub feature.
- F. Create a librar
- G. Create columns and save the library as a template.

**Answer:** CD

**Explanation:** The requirement is to manage the field settings from a single place. For that, content type hub should be implemented.

From scenario: Every file stored within the system must contain the following common document properties:

Document Status  
Department  
Author  
Enterprise Keywords

You must be able to manage file metadata settings from a single location. When you make changes to settings, the changes must be applied to site collections and existing documents. This location must not be a part of the existing marketing, HR, or procurement team sites.

#### NEW QUESTION 188

You need to complete the configuration of the Search2016 farm.

How should you complete the Windows PowerShell command? To answer, drag the appropriate Windows PowerShell segment to the correct location or locations. Each Windows PowerShell segment may be used once, more than once, or not at all. You may need to drag the split bar between panes or scroll to view content.

Windows PowerShell segments	Answer Area
SPConfigurationDatabase	Connect <span>PowerShell segment</span>
ServerRole2016	-DatabaseServer <span>PowerShell segment</span>
Search	-DatabaseNameSP2016Config '
Distributed Cache	-Passphrase Company2919** '
Search2016	-LocalServerRole <span>PowerShell segment</span>
Install-SPService	
ServerRole2013	

**Answer:**

**Explanation:**

Windows PowerShell segments	Answer Area
SPConfigurationDatabase	Connect SPConfigurationDatabase
ServerRole2016	-DatabaseServer ServerRole2016
Search	-DatabaseNameSP2016Config '
Distributed Cache	-Passphrase Company2919** '
Search2016	-LocalServerRole Search
Install-SPService	
ServerRole2013	

#### NEW QUESTION 192

You need to configure SharePoint Server URLs to allow access to the following sites:

For each site, which feature should you configure? To answer, drag the appropriate feature to the correct site. Each feature may be used once, more than once, or not at all. You may need to drag the split bar between panes or scroll to view content.

Features	Answer area
a host header site collection	Site Feature
alternate access mappings	Human Resources Feature
a content deployment path	Marketing team Feature
service application associations	Marketing employee Feature
	Procurement Feature

**Answer:**

**Explanation:** As per the requirements of Case Study, HR, Marketing Team and Procurement should have a dedicated URLs for them. Hence they should be implemented as Host Header site collection. For Marketing employees, it'll be a personal site and they should be able to publish the content on Marketing team site which can be done using content deployment path.

Scenario: Each departmental site must have a separate site collection.

#### NEW QUESTION 197

You need to design a logical architecture for the procurement team site. You implement durable links.

Does the solution meet the goal?

- A. Yes
- B. No

**Answer:** B

#### NEW QUESTION 198



You need to ensure that employees can access published marketing materials. Which feature should you configure?

- A. Promoted Links
- B. Permission levels
- C. Managed paths
- D. Durable Links

**Answer:** D

**NEW QUESTION 199**

You need to configure search for the marketing public website. What should you create?

- A. a Content type
- B. a SharePoint Site content source
- C. a Web Sites content source
- D. an Enterprise Search Center

**Answer:** C

**Explanation:** From scenario:

The public website is not part of the SharePoint environment. It is a standalone ASP.NET website. Content on the public website, including news and job postings, is updated once a month. Information posted to the public website must be accessible by using search. Information stored in the Downloads section of the website must not be crawled due to the large size and the number of files.

**NEW QUESTION 200**

You need to design a logical architecture for the procurement team site. You create multiple content databases for the site collection. Does the solution meet the goal?

- A. Yes
- B. No

**Answer:** B

**NEW QUESTION 205**

You need to configure search for the marketing public website. What should you create?

- A. a Result source
- B. a SharePoint Site content source
- C. a Crawl rule
- D. a Basic Search Center

**Answer:** A

**Explanation:** From scenario:

The public website is not part of the SharePoint environment. It is a standalone ASP.NET website. Content on the public website, including news and job postings, is updated once a month. Information posted to the public website must be accessible by using search. Information stored in the Downloads section of the website must not be crawled due to the large size and the number of files.

**NEW QUESTION 206**

The marketing team requires a location for the storage of their draft files. You need to configure the system to support their requirements. What should you do? To answer, select the appropriate action from each list in the answer area.

## Step

## Action

1

▼
Create a new web application
Create a new site collection based on the My Site Host template
Create a new site collection based on My Site template
Configure My Site settings
Configure personalization settings on web application
Configure permissions policy on web application

2

Configure Self-Service Site Creation.

3

▼
Create a new web application
Create a new site collection based on the My Site Host template
Create a new site collection based on My Site template
Configure My Site settings
Configure personalization settings on web application
Configure permissions policy on web application

4

Configure web application user policy.

5

▼
Create a new web application
Create a new site collection based on the My Site Host template
Create a new site collection based on My Site template
Configure My Site settings
Configure personalization settings on web application
Configure permissions policy on web application

**Answer:**

**Explanation:** References:

<http://www.sharepointdiary.com/2016/12/configure-my-sites-in-sharepoint-2016-step-by-step.html>

### NEW QUESTION 210

In this section, you will see one or more sets of questions with the same scenario and problem. Each question presents a unique solution to the problem, and you must determine whether the solution meets the stated goals. Any of the solutions might solve the problem. It is also possible that none of the solutions solve the problem.

Once you answer a question in this section, you will NOT be able to return to it. As a result these questions will not appear in the review screen.

Note: This question is part of a series of questions that present the same scenario. Each question in the series contains a unique solution. Determine whether the solution meets the stated goals.

You need to display the values for the Document Status and Department properties. You install a language pack.

Does the solution meet the goal?

- A. Yes
- B. No

**Answer:** B

**Explanation:** The requirement is to change the values of metadata field settings from a single location and changes to the settings should be applied to all the site collections and existing documents. So Term Set and Managed Metadata column is the preferred way to implement the Document Status and Department properties.

Topic 5, Contoso LTD (B)

## Overview

You are the SharePoint administrator for a manufacturing company named Contoso, Ltd. You have the following environments:

Location	Department	Main site collection	Farm version
Boston	Corporate Headquarters	<a href="http://Boston.contoso.com/sites/corp">http://Boston.contoso.com/sites/corp</a>	SharePoint 2013
Chicago	Finance	<a href="http://Chicago.contoso.com/sites/Finance">http://Chicago.contoso.com/sites/Finance</a>	SharePoint 2016
Dallas	Sales	<a href="http://Dallas.contoso.com/sites/Sales">http://Dallas.contoso.com/sites/Sales</a>	SharePoint 2016
Denver	Warehouse	<a href="http://Denver.contoso.com/sites/warehouse">http://Denver.contoso.com/sites/warehouse</a>	SharePoint 2013
Atlanta	Marketing	<a href="http://Atlanta.contoso.com/sites/Marketing">http://Atlanta.contoso.com/sites/Marketing</a>	None
Detroit	Development	<a href="http://Detroit.contoso.com/sites/Development">http://Detroit.contoso.com/sites/Development</a>	SharePoint 2016
Seattle	Information Technology	<a href="http://Seattle.contoso.com/sites/IT">http://Seattle.contoso.com/sites/IT</a>	SharePoint 2016

Each site collection uses a unique content database. Details

Dallas

You

configure a My Sites host site collection at the URL <http://Dallas.contoso.com/personal>. The Dallas site collection also hosts a web application that will be used exclusively by sales department employees for creating customer sites. Employees access the site at the URL <http://customer.contoso.com>.

Chicago

The Chicago location has a primary datacenter and a secondary datacenter. Denver

Some of the sites in the Denver site collection run in SharePoint 2010 mode. Atlanta

The Atlanta site collection is used exclusively by marketing department employees.

Detroit

The development site collection is used only by SharePoint administrators for internal testing. Seattle

The IT site collection is used by the IT department to share content with other employees. The following servers are available in the Seattle datacenter:

- \* Server1 and Server5 are located in the Seattle perimeter network. End users have direct access only to these servers.

- \* Server2 and Server6 are optimized for high throughput.

- \* Server3 and Server7 have storage that is optimized for caching.

- \* Server4 and Server8 are not currently in use.

The servers in the Seattle datacenter are not configured for redundancy. Office 365

You have an existing Office 365 tenant. You use Azure Active Directory Connect to provision the hosted environment.

Requirements Chicago

You identify the following requirements for the Chicago office:

General requirements

- \* Chicago must remain a standalone on-premises SharePoint environment. There must be no connectivity with Office 365.

- \* You must deploy a new Office Online Server farm named oos-chi.contoso.com to the environment. This farm will be used from within the network and externally.

All connections to the Office Online Server farm must use IPSec.

Disaster recovery requirements

- \* You must use the secondary datacenter in Chicago for disaster recovery.

- \* You must be able to recover the Chicago.contoso.com SharePoint farm to the secondary datacenter. Any recovery operations must complete in less than five minutes if the primary datacenter fails.

- \* You must minimize the costs associated with deploying the disaster recovery solution. Dallas

You identify the following requirements for the Dallas office: General requirements

- \* You must configure the Dallas SharePoint farm as a hybrid environment with the Office 365 tenant.

- \* You must support OneDrive for Business, Site following, Profiles, and the Extensible app launcher.

- \* You must minimize the number of servers that you must add to the environment.

- \* You must grant users only the minimum permissions needed.

- \* You must

ensure that <http://dallas.contoso.com/personalsite> is only used for employee personal sites.

- \* Only farm

administrators are permitted to create site collections in the <http://Dallas.contoso.com> web applications. Requirements for sales department employees

- \* Sales

users must be able to create child sites under the <http://customer.contoso.com> web application.

- \* Sales users must be able to create site collections. Seattle

You must implement a new SharePoint environment. Employees in the IT department will use the environment to share content with other employees. You identify the following requirements for the Seattle office:

General requirements

- \* You must configure the farm by using MinRole.

- \* You must implement redundancy.

- \* Employees must be able to search all content in the farm. Office 365-specific requirements

Other requirements Atlanta

You must deploy a new SharePoint farm at the Atlanta office. The farm must meet the following requirements:

- \* The farm must be highly available.

- \* Operating systems must support file system encryption.

- \* Search databases must be stored on a file system that automatically repairs corrupt files.

- \* Content databases must be stored on file systems that support the highest level of scalability. Boston

You must upgrade the existing SharePoint farm to SharePoint 2016. Employees who use the farm must be able to continue using the farm during the upgrade process.

Denver

You must perform a database check before you upgrade SharePoint. SQL Server

- \* All SharePoint environments must use dedicated SQL Servers.

- \* The Atlanta SharePoint farm must use SQL Always On and a group named SP16-SQLAO.

- \* The Atlanta SQL environment must use a SQL alias named SQL. Office 365

You must use Active Directory Import to synchronize any on-premises SharePoint environments with the Office 365 tenant.



**NEW QUESTION 213**

You are planning the hybrid environment for OneDrive for Business.

You need to determine what the end-user experience will be for Dallas and Seattle SharePoint users.

What should you conclude? To answer, select the appropriate end-user experience from each list in the answer area.

End-users	OneDrive for Business Location
Dallas on-premises SharePoint users	<div>On-premises</div> <div>Office 365</div>
Seattle on-premises SharePoint users	<div>On-premises</div> <div>Office 365</div>
Dallas Office 365 SharePoint users	<div>On-premises</div> <div>Office 365</div>
Seattle Office 365 SharePoint users	<div>On-premises</div> <div>Office 365</div>

**Answer:**

**Explanation:** Box 1: On-premises

You must configure the Dallas SharePoint farm as a hybrid environment with the Office 365 tenant. Box 2: Office 365

Seattle: You must implement a new SharePoint environment. Box 3: Office 365

You must configure the Dallas SharePoint farm as a hybrid environment with the Office 365 tenant. Box 4: Office 365

Seattle: You must implement a new SharePoint environment.

**NEW QUESTION 214**

You need to upgrade the SharePoint 2013 corporate farm.

Which four actions should you perform in sequence? To answer, move the appropriate actions from the list of actions to the answer area and arrange them in the correct order.

## Actions

## Answer Area

Upgrade the site collections.

Change the Denver farm databases to read only and then back up the Denver databases.

Change the Boston farm databases to read only and then back up the Boston databases.

Create a new SharePoint 2016 farm and copy over the Denver databases from backups.

Create a new SharePoint 2016 farm and copy over the Boston databases from backups.

Attach the upgrade the databases.

### Answer:

**Explanation:** Scenario: Boston. You must upgrade the existing SharePoint farm to SharePoint 2016. Employees who use the farm must be able to continue using the farm during the upgrade process.

To upgrade from Microsoft SharePoint Server 2013 with the March 2013 Cumulative Update to SharePoint Server 2016, you use the database-attach method. In the database-attach method, you first create and configure a SharePoint Server 2016 farm. Then you copy the content and service application databases from the SharePoint Server 2013 with the March 2013 Cumulative Update farm, and then attach and upgrade the databases. This upgrades the data to the new version. Site owners can then upgrade individual site collections.

References: <https://docs.microsoft.com/en-us/sharepoint/upgrade-and-update/overview-of-the-upgrade-process>

### NEW QUESTION 215

You need to ensure that sales department users can create sites.

You

grant sales department users permissions to create personal sites in the <http://Dallas.contoso.com/personal> site collection.

Does the solution meet the goal?

- A. Yes
- B. No

**Answer:** A

#### NEW QUESTION 218

You need to configure the hybrid SharePoint environments.

In the table below, identify the features that you must deploy to each environment.

NOTE: Make only one selection in each column. Each correct selection is worth one point.

## Answer area

SharePoint environment features	Dallas	Seattle
Hybrid site features	<input type="radio"/>	<input type="radio"/>
Hybrid OneDrive for Business	<input type="radio"/>	<input type="radio"/>
Cloud hybrid search	<input type="radio"/>	<input type="radio"/>
Deploy Microsoft Identity Management Server	<input type="radio"/>	<input type="radio"/>
Deploy Azure Active Directory Connect	<input type="radio"/>	<input type="radio"/>

**Answer:**

**Explanation:** Dallas: You must support OneDrive for Business, Site following, Profiles, and the Extensible app launcher (= Hybrid Site Features)  
Seattle: You must support only OneDrive for Business and Profiles (= Hybrid OneDrive for Business).

#### NEW QUESTION 223

You need to upgrade the SharePoint farm for warehouse users. Which Windows PowerShell cmdlet should you run first?

- A. Mount-SPContentDatabase
- B. Test-SPContentDatabase
- C. Convert-SPWebApplication
- D. Test-SPSite

**Answer:** A

**Explanation:** Scenario: Boston: You must upgrade the existing SharePoint farm to SharePoint 2016. Employees who use the farm must be able to continue using the farm during the upgrade process.

The Mount-SPContentDatabase cmdlet attaches an existing content database to the farm. If the database being mounted requires an upgrade, this cmdlet will cause the database to be upgraded.

The default behavior of this cmdlet causes an upgrade of the schema of the database and initiates upgraded builds for all site collections within the specified content database if required. To prevent initiation of upgraded builds of site collections, use the NoB2BSiteUpgrade parameter. This cmdlet does not trigger version-to-version upgrade of any site collections.

#### NEW QUESTION 228

You need to implement the server environment for Seattle.

Where should you deploy the server roles? To answer, drag the appropriate server or servers to the correct roles. Each server or set of servers may be used once, more than once, or not at all. You may need to drag the split bar between panes or scroll to view content.



## Server or Servers

## Answer area

Server1 only

Server3 only

Server1 and Server5

Server3 and Server7

Server2 only

Server4 only

Server2 and Server6

Server4 and Server8

### Role

Front-end

Application

Distribution Cache

Search

### Server or servers

Server or Servers

Server or Servers

Server or Servers

Server or Servers

**Answer:**

**Explanation:**

## Server or Servers

## Answer area

Server1 only

Server3 only

Server1 and Server5

Server3 and Server7

Server2 only

Server4 only

Server2 and Server6

Server4 and Server8

### Role

Front-end

Application

Distribution Cache

Search

### Server or servers

Server1 and Server5

Server2 and Server6

Server3 and Server7

Server2 and Server6

### NEW QUESTION 232

You need to ensure that sales department users can create site collections. You run the following Windows PowerShell commands:

```
$w
= Get-SPWebApplication http://customer.contoso.com
$w.SelfServiceSiteCreationEnabled=$True
$w.Update()
```

Does the solution meet the goal?

- A. Yes
- B. No

**Answer:** A

### NEW QUESTION 234

You need to plan the Atlanta farm deployment.

Which file systems should you use? To answer, select the appropriate file system from each list in the answer area.

# Answer Area

Component

File System

Operating System

▼

NTFS

ReFS

Search database

▼

NTFS

ReFS

Content database

▼

NTFS

ReFS

Answer:

Explanation:

# Answer Area

Component

File System

Operating System

▼

NTFS

ReFS

Search database

▼

NTFS

ReFS

Content database

▼

NTFS

ReFS

NEW QUESTION 235

.....

## Thank You for Trying Our Product

\* 100% Pass or Money Back

All our products come with a 90-day Money Back Guarantee.

\* One year free update

You can enjoy free update one year. 24x7 online support.

\* Trusted by Millions

We currently serve more than 30,000,000 customers.

\* Shop Securely

All transactions are protected by VeriSign!

**100% Pass Your 70-339 Exam with Our Prep Materials Via below:**

<https://www.certleader.com/70-339-dumps.html>