

4A0-100 Dumps

Alcatel-Lucent Scalable IP Networks

<https://www.certleader.com/4A0-100-dumps.html>



NEW QUESTION 1

The physical networks connecting two PCs to the internet are DSL and PPP respectively. Which layer will enable the two PCs to communicate?

- A. Layer 1
- B. Layer 2
- C. Layer 3
- D. Layer 4

Answer: C

NEW QUESTION 2

Which of the following is a File command in the File System context of the Command Line Interface (CLI)?

- A. time-display
- B. help
- C. type
- D. terminal

Answer: C

NEW QUESTION 3

Which of the following best describes the function of an ARP cache within the same subnet?

- A. Used by IP to map an unknown IP address to the known hardware address of the distant hos
- B. Adds only an IP address entry for an unknown device on the same subne
- C. Transmits ICMP messages to multiple hosts with unknown IP addresse
- D. Resolves the MAC address of a host device given its IP addres

Answer: D

NEW QUESTION 4

A set of tasks that move a packet from its entry into an IP network to itsexit from the IP network. Thisdescribes:

- A. IP routin
- B. IP protoco
- C. IP encapsulatio
- D. IP tunnelin

Answer: A

NEW QUESTION 5

Which organization first considered cross-platform networking support to be a necessity?

- A. IB
- B. US Militar
- C. Alcatel-Lucen
- D. NAS
- E. Bell Labs

Answer: B

NEW QUESTION 6

Which of the following is true of Ethernet half-duplex transmission?

- A. Half-duplex transmission is less efficient because the frame MTU is smalle
- B. Half-duplex transmission is only 30-40% efficient because of collision
- C. Ethernet switches support half-duplex transmission onl
- D. All of the abov

Answer: B

NEW QUESTION 7

Which of the following IP header fields contains information that indicates whether routers are allowed to fragment a packet?

- A. Header checksu
- B. Fragmentation offse
- C. Flag
- D. Identificatio

Answer: C

NEW QUESTION 8

How many of the front access card slots of the Alcatel-Lucent 7750 SR-12 router are dedicated for redundant common equipment?

- A. 1
- B. 2
- C. 7
- D. 10

Answer: B

NEW QUESTION 9

Kahn solved the problem of interconnecting different networks using different protocols by pioneering a new protocol called TCP that was capable of:

- A. Secure transmission of informatio
- B. Enforcing a constant packet size to avoid discard
- C. Allowing remote login
- D. Providing host to host connectivity with global addressin

Answer: D

NEW QUESTION 10

What characteristic of IP addressing creates a hierarchical network?

- A. All hosts on all networks must have unique host number
- B. IP addresses identify a host and the network on which it reside
- C. Clients are assigned 32-bit addresses and servers 64-bit addresse
- D. Router, switch and host addresses are drawn from unique address classe

Answer: B

NEW QUESTION 10

Which three of the following are important considerations when designing subnets? (Choose three.)

- A. Number of subnetworks currently require
- B. Type of physical connectivity used by each segmen
- C. Future network growth requirement
- D. Number of hosts each subnetwork will suppor
- E. Class of the network address to be used for the networ

Answer: ACD

NEW QUESTION 12

Which of the following is a feature of a VLAN?

- A. A VLAN allows multiple Ethernet switches to be connected in a single broadcast domai
- B. A VLAN allows multiple Ethernet switches to be connected in a single collision domai
- C. A VLAN can separate ports on the same switch into different broadcast domain
- D. A VLAN can separate ports on the same switch into different collision domain

Answer: C

NEW QUESTION 15

What happens immediately after an Ethernet switch receives an Ethernet frame?

- A. It records the destination MAC address and the interface on which it arrive
- B. It records the source MAC address and the interface on which it arrive
- C. It floods the frame out of all its interfaces except the interface on which the frame arrive
- D. It transmits the frame out of the appropriate interfac

Answer: B

NEW QUESTION 17

What is the basic unit of framing in SDH and the bit rate for its transmission?

- A. STM-1 with a bit rate of 1.544 Mbit/s
- B. STM-1 with a bit rate of 2.048 Mbit/s
- C. STM-1 with a bit rate of 51.84 Mbit/s
- D. STM-1 with a bit rate of 155.52 Mbit/s

Answer: D

NEW QUESTION 22

Which of the following is a characteristic of the system address?

- A. A physical interface addres
- B. A logical address on the router not corresponding to any specific interfac
- C. May have any prefix valu
- D. A management IP addres

Answer: B

NEW QUESTION 23

Which field in the IP routing table contains the name or address of the neighbour that advertised the prefix to the router?

- A. Preferenc
- B. Metri
- C. Dest prefi
- D. Next ho

Answer: D

NEW QUESTION 25

What is the purpose of the broadcast address?

- A. Provides an address that refers to all the devices in a given networ
- B. Provides an address to refer to a specific group of devices in a given networ
- C. Provides an address to refer to a group of devices having the same IP addresses in different Layer 2 network
- D. Provides an address to refer to a single device on a given networ

Answer: A

NEW QUESTION 29

Which ATM adaptation layer is commonly used for transporting IP datagrams or non-real time data?

- A. AAL0
- B. AAL1
- C. AAL2
- D. AAL3/4
- E. AAL5

Answer: E

NEW QUESTION 32

Which type of IP address contains the network number and all 1's for the host address?

- A. Unicast address
- B. Broadcast address
- C. Multicast address
- D. Anycast address

Answer: B

NEW QUESTION 35

What protocol is used by ping to verify IP network reachability?

- A. DCHP
- B. ICMP
- C. ARP
- D. NAT

Answer: B

NEW QUESTION 37

Which compact flash on a Control/Switch processor of an Alcatel-Lucent 7750 router stores the runtime image and running configuration?

- A. CF 1
- B. CF 2
- C. CF 3
- D. Both A and B

Answer: C

NEW QUESTION 41

Which of the following is a feature of Layer 3?

- A. Provides an universal addressing scheme
- B. Ensures data is delivered across the Layer 2 network
- C. Provides reliable data transfer
- D. Provides a physical interface to the network

Answer: A

NEW QUESTION 46

Which of the following user interface sessions are accessible through Telnet and Secure Shell (SSH) on the Alcatel-Lucent 7750 SR and 7450 ESS?

- A. Graphic User Interface (GUI).
- B. Node Management Terminal Interface (NMTI).
- C. Command Line Interface (CLI).
- D. All of the above

Answer: C

NEW QUESTION 47

What happens next after an incoming packet is de-encapsulated from the Layer 2 frame in an Alcatel-Lucent 7750 router?

- A. The IP datagram is encapsulated in the appropriate Layer 2 frame by the MD
- B. The IP datagram passes through the switch fabric to reach the egress IO
- C. The IP datagram is passed to the IO
- D. A lookup is performed in the FIB to determine the egress interface

Answer: C

NEW QUESTION 51

What is NOT a function of the IOM?

- A. It forwards the data to the switch fabric
- B. It discards excess data packet
- C. It converts the incoming data to an internal format
- D. It performs Quality of Service operations and buffers incoming data

Answer: C

NEW QUESTION 55

What is the sequence of events for a client to receive an IP address from the server in the DHCP?

- A. Discover, offer, request, acknowledgement
- B. Request, offer, discover, acknowledgement
- C. Discover, request, offer, acknowledgement
- D. Request, acknowledgement, discover, offer

Answer: A

NEW QUESTION 56

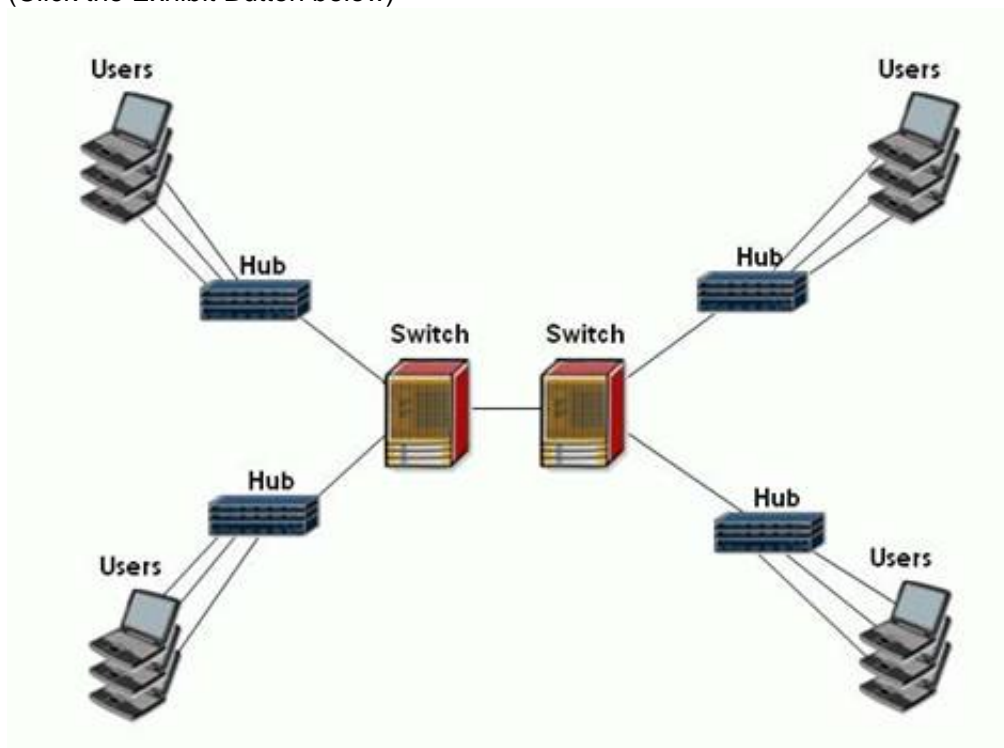
Which of the following statements is TRUE regarding the development of the OSI Reference Model?

- A. OSI was developed as an alternative, open standard to IBM's SNA model
- B. OSI protocols were no longer used after TCP/IP was developed
- C. OSI model is much simpler than TCP/IP
- D. OSI model is maintained exclusively by the IETF

Answer: A

NEW QUESTION 60

(Click the Exhibit Button below)



An Ethernet Local Area Network (LAN) consists of the following components:

Four 24-port hubs & Two 16-port switches

How many broadcast domains are on this LAN?

- A. 1
- B. 2
- C. 5
- D. 32

Answer: A

NEW QUESTION 64

One of the tasks of the boot options file (BOF) is to:

- A. Specify authorization information to control access to the route
- B. Define an IP address for the CPM Ethernet port
- C. Initialize the hardware
- D. Set the date/time for the system

Answer: B

NEW QUESTION 69

How do protocols such as ATM and Frame-Relay support differentiating multiple customers or traffic types on the same physical wire?

- A. ATM and Frame-Relay are circuit switched protocols and use Virtual Circuits to create logical separation of traffic
- B. ATM and Frame-Relay are point-to-point protocols and do not support different customers or traffic type on the same physical wire
- C. ATM and Frame-Relay are circuit switched protocols and use VLAN's to create logical separation of traffic
- D. ATM and Frame-Relay are circuit switched protocols and use IP Header information to create logical separation of traffic

Answer: A

NEW QUESTION 70

What distance is supported using CAT-5 cabling for 10/100/1000 TX?

- A. 100
- B. 500
- C. 1 K
- D. 10 K

Answer: A

NEW QUESTION 73

A Class C network is defined by a:

- A. 32-bit network prefix
- B. 24-bit network prefix
- C. 16-bit network
- D. 8-bit network

Answer: B

NEW QUESTION 74

Which of the following is a characteristic of the IP layer?

- A. Provides an unreliable, connectionless data transmission service
- B. Provides a mechanism for flow control
- C. Verifies the integrity of all received datagrams
- D. Provides services equivalent to the OSI data link layer

Answer: A

NEW QUESTION 78

With a subnet mask of 255.255.255.224, which of the IP addresses below are valid host addresses? (Choose all that apply)

- A. 17.23.119.63
- B. 87.99.12.159
- C. 95.11.22.93
- D. 192.11.25.87

Answer: CD

NEW QUESTION 82

What must occur for a LAG to become operational?

- A. There must be multiple ports assigned to the LAG
- B. All ports in the LAG must be configured with the same characteristics
- C. Auto-negotiation must be enabled on all ports in the LAG
- D. All of the above

Answer: B

NEW QUESTION 85

What problems was Spanning Tree Protocol (STP) primarily designed to solve? (Choose two):

- A. Providing path redundanc
- B. Preventing loop
- C. Handling collision
- D. Allowing flooding of multicast traffi

Answer: AB

NEW QUESTION 86

Which of the following is a private IP network address reserved by the IANA?

- A. 172.30.0.0/16
- B. 192.100.0.0/24
- C. 172.0.0.0/16
- D. 169.254.0.0/16
- E. 11.0.0.0/8

Answer: A

NEW QUESTION 87

What information is used to separate VLANs on a VLAN trunk that connects multiple VLANs?

- A. VLAN ta
- B. IP Heade
- C. FC
- D. Priority Valu

Answer: A

NEW QUESTION 91

In what type of network is a broadcast storm likely to occur?

- A. An Ethernet network with redundant paths not running ST
- B. An ATM networ
- C. A SONET networ
- D. All of the abov

Answer: A

NEW QUESTION 94

Which of the following are examples of Time Division Multiplexing (Choose two)?

- A. Etherne
- B. Token-Rin
- C. SONET/SD
- D. E1 carrie
- E. PPP

Answer: CD

NEW QUESTION 95

If a 4-port LAG is configured with the option of 'port-threshold 2' and 'action down' what will happen if the total operational links in the LAG is 2?

- A. If dynamic-cost is enabled it will adjust the cost for routing protocols such as OSP
- B. If dynamic-cost is not enabled it will adjust the cost for routing protocols such as OSPF by dividing the link bandwidth by 2.
- C. The LAG will be changed to an operational state of 'down'.
- D. The LAG will function with only 2 port
- E. There will be no change to the routing metri

Answer: C

NEW QUESTION 97

Which technologies can be used with Ethernet switches to achieve redundancy? (Choose two)

- A. LAG
- B. OSPF
- C. RIP
- D. STP

Answer: AD

NEW QUESTION 101

The IANA is responsible for:

- A. Intra-city ISP traffic
- B. Allocation of the global IP address space
- C. Allocating IP addresses for residential customer traffic
- D. Allocating North American IP addresses

Answer: B

NEW QUESTION 106

Which of the following statements is TRUE about ICMP?

- A. An IP datagram is encapsulated within an ICMP header
- B. ICMP messages can only be generated by router
- C. ICMP messages are encapsulated within an IP datagram
- D. ICMP guarantees delivery of a message

Answer: C

NEW QUESTION 109

When entering a command on the Alcatel-Lucent 7750 SR from the Command Line Interface (CLI), what would you use to list all the options for the command?

- A. ?
- B. tab character
- C. space character
- D. info

Answer: A

NEW QUESTION 112

Which Ethernet frame field does the receiver use to verify the integrity of the received bits?

- A. Destination address
- B. Frame check sequence
- C. Preamble
- D. Length field

Answer: B

NEW QUESTION 117

Public IP address spaces are distributed by which of the following organizations?

- A. Network Solutions INC
- B. IANA
- C. IETF
- D. ITU-T
- E. IEEE

Answer: B

NEW QUESTION 119

Which organization eventually became the standards body for IP and related protocols?

- A. IEEE
- B. IETF
- C. NSFNET
- D. ITU-T
- E. APNIC

Answer: B

NEW QUESTION 120

What is the effective maximum rate of data transmission on a 10 Mbps full-duplex Ethernet link?

- A. 5 Mbps
- B. 10 Mbps
- C. 15 Mbps
- D. 20 Mbps

Answer: D

NEW QUESTION 123

What is the behavior of a typical Ethernet switch when it receives a frame with an unicast destination MAC address? (Choose two)

- A. The switch floods the frame out of all ports except the port on which it was receive
- B. The switch looks in its FD
- C. If the source address is unknown it discards the fram
- D. The switch looks in its FD
- E. If the destination address is known it forwards the frame out the appropriate interfac
- F. The switch looks in its FD
- G. If the destination address is unknown it floods the frame out all ports except the port on which it was receive
- H. The switch looks in its FD
- I. If the destination address is unknown it discards the fram

Answer: CD

NEW QUESTION 125

What is the main purpose of IP fragmentation?

- A. To limit the number of the IP addresses in the networ
- B. To improve the efficiency of transmissions over the networ
- C. To reduce the number of resources required to send a large frame over the networ
- D. To allow IP datagrams to be carried over Layer 2 networks with varying MTU size

Answer: D

NEW QUESTION 127

What is the meaning of carrier sense in the CSMA/CD algorithm?

- A. The host will retransmit the frame if it detects a collision during transmissio
- B. The host is able to detect the transmission speed of the Ethernet switch port to which the host is connecte
- C. The host will only transmit data when it detects that no other devices are transmittin
- D. The host will only transmit upon a timer expir
- E. The host will only transmit when it receives the toke

Answer: C

NEW QUESTION 128

Which of the following best describes the operation of the Media Dependent Adapter (MDA)?

- A. The MDA contains the flexible fast path complex used for forwarding dat
- B. Excess data is discarded by the MDA and the remaining data forwarded for QoS processin
- C. The MDA buffers data and applies Quality of Service (QoS) to classify and treat the data appropriatel
- D. The MDA converts data from its incoming physical format into an internal format and provides some minimal bufferin

Answer: D

NEW QUESTION 131

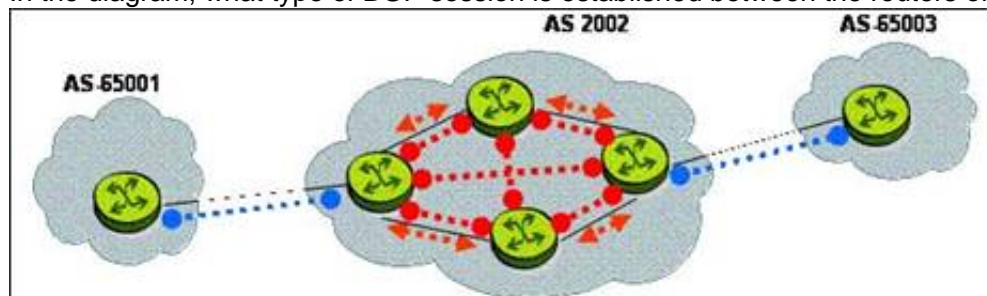
Which of the following describes a static default route?

- A. A routing entry, included in the RIB by default, that forwards packets with an unknown destination to the CPM for inspectio
- B. A manual entry used when the destination address of a network is not specifically listed in the routing tabl
- C. A manual entry that matches a specific /32 host address using the least cost to the destinatio
- D. A default entry in the FIB used when forwarding multicast and broadcast packet

Answer: B

NEW QUESTION 136

In the diagram, what type of BGP session is established between the routers of AS 2002?



- A. IGP
- B. IBGP
- C. EBGP
- D. EGP
- E. BGPcannotbe run between routers in the same A

Answer: B

NEW QUESTION 141

Where would you expect to find a P router in a service provider's network? A. At the edge of the provider's network facing the customer.

- A. At the edge of the customer's network facing the provide
- B. In the core of the providers network
- C. On the customer premise

Answer: C

NEW QUESTION 143

Which of the following are NOT examples of a VPN service offered on the Alcatel-Lucent 7750 SR? Choose two.

- A. VPWS Virtual Private Wire Service
- B. VPLS Virtual Private LAN Servic
- C. VPRN Virtual Private Routed Network
- D. MLPPP Multi-link Point-to-Point protocol
- E. VPDFS Virtual Private Dark Fiber Servic

Answer: DE

NEW QUESTION 144

In regards to the Alcatel-Lucent 7750 SR-12 router, how many of the front access card slots are dedicated for Control Processors?

- A. 1
- B. 2
- C. 7
- D. 10

Answer: B

NEW QUESTION 147

Which field in the Routing Information Base (RIB) determines the direction frames will egress the node?

- A. Preference
- B. Metric
- C. Dest prefix
- D. Next-hop
- E. Cost

Answer: D

NEW QUESTION 149

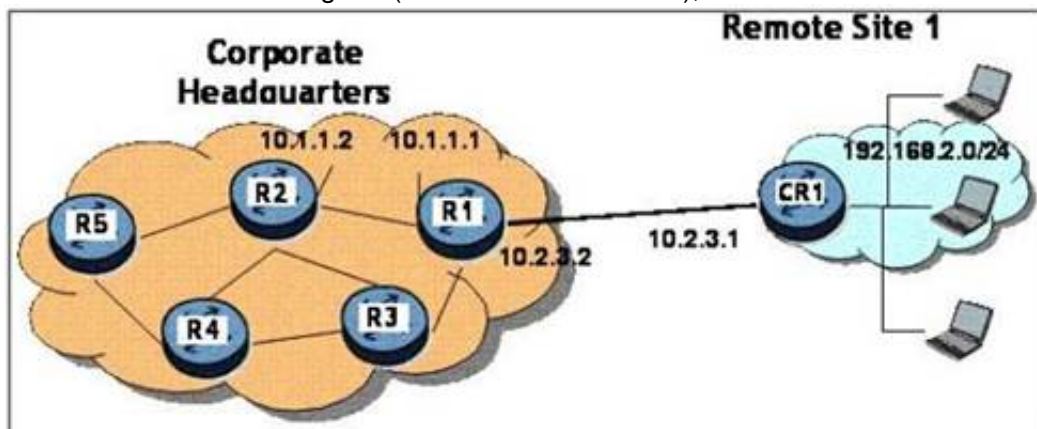
Which of the following SAP types can be associated to a VPWS? (Choose 3)

- A. Ethernet
- B. ATM
- C. Token Ring
- D. Frame Relay

Answer: ABD

NEW QUESTION 153

Based on the network diagram (click the Exhibit Button),



what are the prefix, mask, and next-hop used on CR1 to setup a default static route to R1?

- A. 0.0.0.0/0 next-hop 10.2 3.2
- B. 0.0.0.0/32 next-hop 10.2.3.2
- C. 10.2.3.2/32 next-hop 0.0.0.0/0
- D. 0.0.0.0/0 next-hop 192.168.2.0

Answer: A

NEW QUESTION 154

What must occur before two hosts can exchange data using TCP?

- A. Nothin
- B. The two hosts can send data to each other at any tim

- C. The two hosts must negotiate a path MTU to be used for the data exchange
- D. The two hosts must perform a 3-way handshake before transmitting dat
- E. The two hosts must exchange encryption keys before transmitting dat

Answer: C

NEW QUESTION 157

Public IP addresses are globally coordinated by which organization?

- A. Network Solutions INC
- B. IANA
- C. IETF
- D. ITU-T
- E. IEEE

Answer: B

NEW QUESTION 161

How is Ethernet II different from Ethernet 802.3?

- A. Ethernet II can be used on broadcast networks where as 802.3 was designed for point-to-point network
- B. Ethernet II identifies its payload type where as 802.3 indicates the frame lengt
- C. Ethernet II identifies its frame length while 802.3 indicates the payload typ
- D. Ethernet II and Ethernet 802.3 are two different names for the same protoco

Answer: B

NEW QUESTION 166

What is the function of the Routing Table Manager?

- A. Based on the metrics of the routing protocol, find the best path to the destination network and install it in the routing tabl
- B. Provide a CLI interface to allow the operator to configure the dynamic routing protocol on the route
- C. Based on the routing protocol preference values, chose the route with the lowest preference and install it in the routing tabl
- D. Provide a CLI interface to allow the network operator to install static routes in the routing tabl

Answer: C

NEW QUESTION 169

Which of the following protocols belongs to the OSI suite of protocols? (Choose 2)

- A. OSPF
- B. BGP
- C. X.500
- D. IS-IS
- E. Ethernet

Answer: CD

NEW QUESTION 173

Which answer reflects the correct message sequence used when a source attempts to ping a destination for which it has no Address Resolution Protocol (ARP) cache entry?

- A. ICMP echo request, ARP request, ARP reply, ICMP echo reply
- B. ARP request, ARP reply, ICMP echo request, ICMP echo reply
- C. ICMP echo request, ICMP echo reply, ARP request, ARP reply
- D. ICMP echo reques
- E. ARP reply, ARP request, ICMP echo reply

Answer: B

NEW QUESTION 174

Which device is responsible for removing the MPLS label before the packet reaches the CE device?

- A. The CE device removes the MPLS labe
- B. The last LSR on the LSP removes the MPLS labe
- C. MPLS labels are not removed until they reach the final destinatio
- D. The egress LER removes the MPLS labe

Answer: D

NEW QUESTION 179

How does a VPRN service avoid the problem of overlapping IP addresses from different customers?

- A. You cannot have overlapping IP addresse
- B. Customers must change their IP address assignmen

- C. Each VPRN service maintains a separate VPN routing and forwarding instance to separate customer routing informatio
- D. This allows for overlapping addresse
- E. A VPRN ignores IP addressing information and uses MAC addressing instead, which are always uniqu
- F. A VPRN translates customer IP addresses to a private addressing scheme administered by the service provide

Answer: B

NEW QUESTION 184

How does the Transport Layer identify which application is to receive the data?

- A. By using the IP address of the packe
- B. By using the MAC address of the fram
- C. By using port number
- D. By using Connection Identifier Numbers (CINs).

Answer: A

NEW QUESTION 185

Which field in the TCP header is used by the receiver to indicate how many segments it can receive?

- A. Checksum
- B. SYN
- C. Destination port
- D. Window size
- E. MTU

Answer: D

NEW QUESTION 187

What happens in a TCP session if a segment is not acknowledged within a certain time period?

- A. The missing segment is retransmitte
- B. The TCP session is terminate
- C. The sender sends the next segmen
- D. An ICMP destination unreachable message is sen

Answer: A

NEW QUESTION 191

What must the sender do when it receives a window size of 0 from the receiver?

- A. Stop transmittin
- B. Terminate the TCP sessio
- C. Send the next segmen
- D. Retransmit the previous segmen

Answer: A

NEW QUESTION 193

Host A receives a TCP SYN/ACK segment. What does this signify?

- A. Host A has received a request to establish a TCP sessio
- B. Host A has received a request to close a TCP session
- C. A TCP session is now established to host
- D. The TCP session has been terminated due to a timeou

Answer: C

NEW QUESTION 194

SAPs may be a port, a port with a specific VLAN tag in the case of an Ethernet port, or a port with a specific Circuit ID in the case of ATM or Frame Relay.

- A. True
- B. False

Answer: A

NEW QUESTION 198

Which of the following statements best characterize Link State Routing? (Choose 2)

- A. Routers periodically send a copy of their routing table to their neighbor
- B. Routers flood link information throughout the entire are
- C. Network converges quickly (within several seconds) after a topology chang
- D. Routers do not have precise knowledge of the entire network topolog

Answer: BC

NEW QUESTION 200

Which transport protocol and port number is used by BGP to establish and maintain a peering session with other BGP speakers?

- A. TCP port 179.
- B. UDP port 179.
- C. TCP port 22.
- D. UDP port 22.

Answer: A

NEW QUESTION 204

Which of the following are correct statements about MPLS labels (Choose three)?

- A. A series of labels from one LER to another LER represent a logical tunnel known as an LS
- B. Labels used for a LSP may be static but are usually signaled dynamically with an MPLS label signaling protoco
- C. Labels are locally significant to the MPLS router which means its possible for two routers on the LSP path to use the same labe
- D. Labels are globally significant to the MPLS network which means all labels on the LSP path must be uniqu
- E. Labels used for an LSP must be statically assigned by the service provide

Answer: ABC

NEW QUESTION 205

Which of the following statements is TRUE regarding IP addressing?

- A. Classful IP addressing provides hierarchy based on variable subnet mask
- B. Classless IP addresses provide hierarchy based on a variable length subnet mas
- C. Classless IP addresses provide hierarchy based on fixed subnet masks of /24./16 and/8.
- D. IP addresses provide hierarchy based on the country code and regional identifie

Answer: B

NEW QUESTION 207

How does the Transport Layer identify which application is to receive the data?

- A. Using the IP address of the packe
- B. Using the MAC address of the fram
- C. Using port number
- D. Using Connection Identifier Numbers (CIN).

Answer: C

NEW QUESTION 208

Which bit pattern identifies the network address in the subnet mask?

- A. A string of consecutive 1'
- B. A string of consecutive 0'
- C. A string of alternating 10'
- D. The network address is determined by masking the source address with a port's ifIndex binary representatio

Answer: A

NEW QUESTION 210

A CE device has a physical connection to which device in the service providers MPLS network?

- A. CE always connects to a PE route
- B. CE always connects to a P route
- C. CE always connects to another CE devic
- D. The CE does not connect to the service provider networ

Answer: A

NEW QUESTION 214

Which statement best describes a SAP?

- A. The Service ATM Point is used for ATM connections to a P
- B. The Service Access Point is defined on the PE device and is the customers access to the servic
- C. The Service Access Point is defined on the P device and is the customers access to the servic
- D. The Service Access Point is defined on the CE device and is the customers access to the servic

Answer: B

NEW QUESTION 216

Which of the following are considered Virtual Private Networks? Choose all that apply.

- A. IES
- B. VPWS
- C. VPLS
- D. VPRN

Answer: BCD

NEW QUESTION 217

Which of the following statements are TRUE about the Alcatel-Lucent SR 7750? (Choose 2)

- A. It can boot without a compact flash in the CF3 slot
- B. It cannot boot without a compact flash in the CF3 slot
- C. It can operate without a compact flash in the CF3 slot once it has booted
- D. It cannot operate without a compact flash in the CF3 slot once it has booted

Answer: BC

NEW QUESTION 219

Which of the following describes a static default route?

- A. An entry included in the default configuration of the router that is used if no dynamic routing protocols or static routes are configured
- B. A wildcard entry used when the destination network is not specifically defined in the routing table
- C. An entry selected based on the route that has the least cost to the destination (path with the most physical bandwidth)
- D. An entry used by the routing protocol when it is unable to calculate the best route to the destination

Answer: B

NEW QUESTION 222

How does LDP select the path used for an LSP?

- A. LDP monitors the available bandwidth on all links and signals the LSP based on this information
- B. LDP uses the shortest hop-count between two endpoints for the LSP
- C. LDP must be configured hop-by-hop by the service provider
- D. LDP follows the path chosen by the IGP

Answer: D

NEW QUESTION 226

Which of the following statements is FALSE when describing a Virtual Private LAN Service?

- A. A VPLS emulates a virtual switch or bridge
- B. The VPLS performs MAC learning on MAC addresses seen from SAPs and SDP
- C. When a VPLS receives a frame with an unknown MAC destination, the frame will be dropped
- D. MAC addresses are maintained in a MAC address forwarding database (FDB).

Answer: C

NEW QUESTION 228

From the CE perspective, how does a VPLS operate?

- A. A VPLS operates as if 2 sites are directly connected by a single cable
- B. A VPLS operates as if multiple sites are connected through a single switched LAN
- C. A VPLS operates as if multiple sites are connected through a single route
- D. A VPLS operates as if multiple sites are connected through a series of private point-to-point routed connections

Answer: B

NEW QUESTION 230

Which of the following are important to consider when designing IPv4 subnets? (Choose 3)

- A. The number of subnetworks currently required
- B. The version of the Ethernet used by each segment
- C. Future network growth requirements
- D. The number of hosts each subnetwork will support
- E. The class of the IP address assigned to an organization

Answer: ACD

NEW QUESTION 231

The statement below describes which of the following activities?

"A set of tasks that moves a packet from its entry into an IP network to its exit from the IP network."

- A. IP forwarding
- B. IP decapsulation
- C. IP encapsulation

D. IP tunneling

Answer: A

NEW QUESTION 235

If a customer requires a point-to-point layer 2 VPN service between two locations which VPN service would be typically suited for this customer?

- A. Virtual Private Wire Service .
- B. Virtual Private LAN Servic
- C. Virtual Private Routed Network
- D. Virtual Private Dark Fiber Servic

Answer: A

NEW QUESTION 236

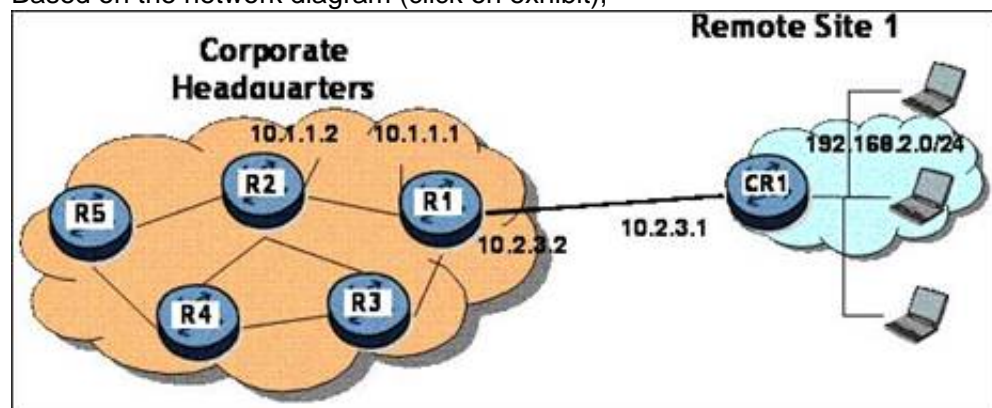
Which of the following mediums can be used in a VPWS when defining SAPs (Select three)?

- A. Etherne
- B. AT
- C. Frame Rela
- D. Token Rin

Answer: ABC

NEW QUESTION 240

Based on the network diagram (click on exhibit),



R2 wants to connect to the networks behind CR1 using a static-route. What is the correct syntax given the choices below? R1 has a valid static-route defined for networks behind CR1.

- A. config router static-route 192.168.2.0/24 next-hop 10.2.3.2
- B. config router static-route 192.168.2.0/24 next-hop 10.1.1.1
- C. config router static-route 192.168.2.0/24 next-hop 10.2.3.1
- D. config router static-route 192.168.2.0/24 next-hop 10.1.1.2
- E. none of the above

Answer: B

NEW QUESTION 241

Multiple SAPs may be defined on the same physical port and may be used for different services.

- A. True
- B. False

Answer: A

NEW QUESTION 243

Which two protocols are used for the dynamic signaling of MPLS labels (Choose two)?

- A. RSVP-TE
- B. CSPF
- C. PNNI
- D. LDP

Answer: AD

NEW QUESTION 245

What are the tasks of the Routing Table Manager (RTM)? Choose two

- A. RTM selects the best route from among multiple routing protocol
- B. RTM selects the best route using the metric as criteria
- C. RTM sends its best route to all its directly connected neighbor
- D. RTM installs its best route in the routing tabl

Answer: AD

NEW QUESTION 246

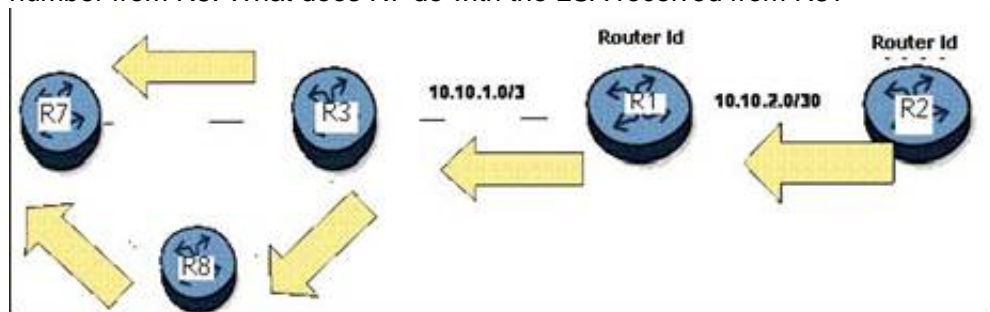
TCP is sending data in 5 segments with SEQ numbers 27000, 27500, 28000, 28500, and 29000 respectively. During transmission, the segment with SEQ=28500 is dropped in the network. How does TCP handle this situation?

- A. The receiving end station sends an ACK flag with SEQ=28000 to indicate it has received a segment out of order
- B. The receiving station sends a NACK frame with SEQ=28500 requesting that the frame be retransmitted
- C. Once the receiver's window is full
- D. TCP assembles the payload and determines that SEQ=28500 is missing
- E. At this point, the receiver sends the RST flag with SEQ=28500 to Request Single Transmission of the missing segment
- F. TCP will collect the segments and forward them to the application layer where the SEQ numbers will be processed and a retransmit request will occur for the entire packet

Answer: C

NEW QUESTION 250

In the diagram, R7 receives a new LSA from R3 and installs it in its link state database. 10 ms. later it receives another copy of the LSA with the same sequence number from R8. What does R7 do with the LSA received from R8?



- A. R7 silently discards the LSA received from R8.
- B. R7 installs the LSA received from R8 in its link state database and floods a copy to its neighbor
- C. R7 discards the LSA received from R8 and sends an ACK to R8.
- D. R7 installs the LSA received from R8 in its link state database, sends an ACK to R8 and floods a copy to its neighbor

Answer: C

NEW QUESTION 253

Which of the following statements is TRUE regarding a VPWS service?

- A. VPWS is a point-to-multipoint service
- B. VPWS requires MAC learning in order to forward frames to the correct destination
- C. A Spanning Tree Protocol must be enabled when deploying a VPW
- D. VPWS treats multicast traffic similar to unicast traffic

Answer: D

NEW QUESTION 257

Which protocol is used by ping to verify IP network reachability? A. DHCP

- A. ICMP
- B. ARP
- C. NAT

Answer: B

NEW QUESTION 258

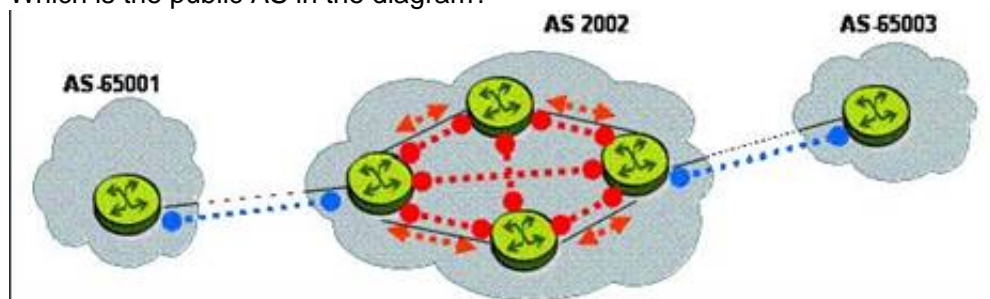
What is the purpose of the source and destination ports in the TCP header?

- A. These ports identify the physical location of the sender and the receiver on the IP route
- B. These ports are used as addresses to communicate with the IP layer
- C. TCP does not use source or destination port
- D. These ports are used as an address to identify the upper layer application using the TCP connection

Answer: D

NEW QUESTION 259

Which is the public AS in the diagram?



A. 65001

- B. 65003
- C. 2002
- D. All of the above
- E. None of the above

Answer: C

NEW QUESTION 261

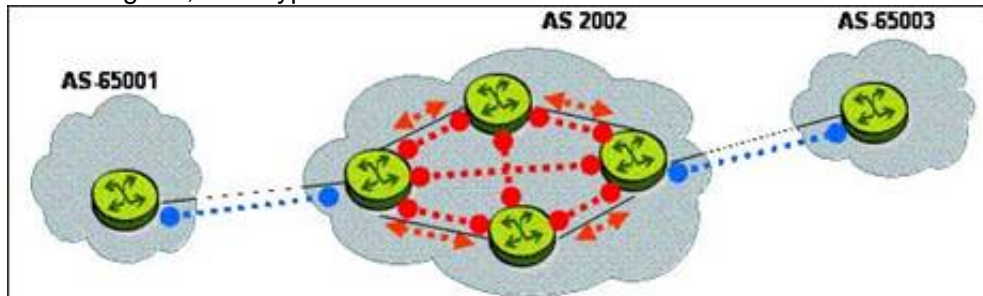
Which of the parameters in Hello messages exchanged between two OSPF neighbors must be the same to keep the adjacency alive in OSPF? (Choose four.)

- A. Interface MT
- B. Area ID
- C. Authentication password
- D. Hello interval
- E. Dead interval
- F. Router priority

Answer: BCDE

NEW QUESTION 266

In the diagram, what type of BGP session is established between the routers of AS 65001 and AS 2002?

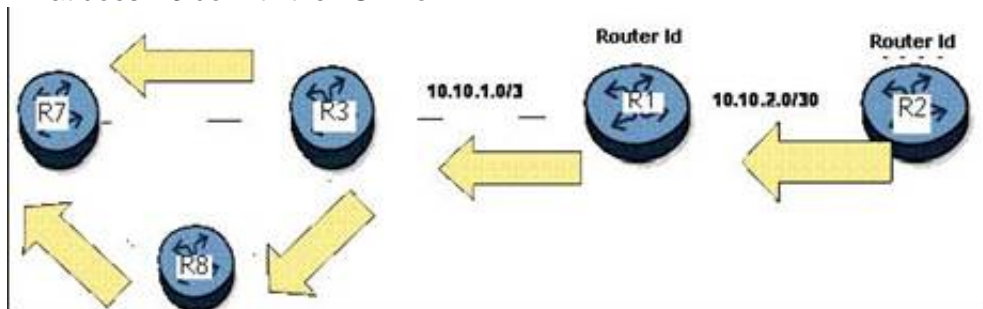


- A. IGP
- B. IBGP
- C. EBG
- D. EGP
- E. BGP cannot be run between routers in different AS

Answer: C

NEW QUESTION 267

In the diagram, R3 receives an LSA with the sequence number 111 from R7 and then receives another copy of the LSA with a sequence number 112 from R1. What does R3 do with the LSA from R1?

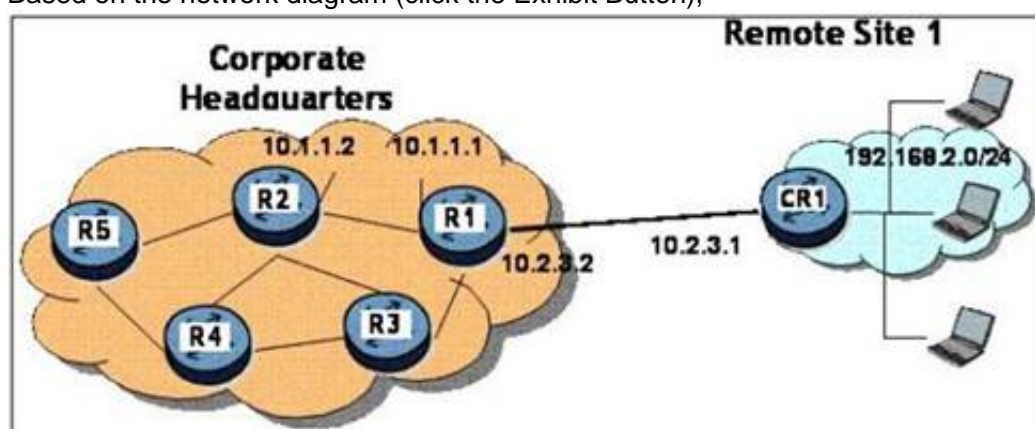


- A. R3 discards the LSA received from R1 and sends a copy of the LSA from its link state base to R1.
- B. R3 installs the LSA received from R1 in its link state database and floods a copy to its neighbor
- C. R3 discards the LSA received from R1 and sends an ACK to R1.
- D. R3 installs the LSA received from R1 in its link state database, sends an ACK to R1 and floods a copy to its neighbor

Answer: D

NEW QUESTION 270

Based on the network diagram (click the Exhibit Button),



what is the next-hop used on R1 to setup a static route to the network on CR1?

- A. next-hop 10.2.3.2
- B. next-hop 192.168.2.1

- C. next-hop 10.2 3.1
- D. next-hop 192.168.2.0

Answer: C

NEW QUESTION 271

What is the purpose of a broadcast address?

- A. Provides an address that refers to all the devices in a given network
- B. Provides an address that refers to a specific group of devices in a given network
- C. Provides an address that refers to a group of devices with the same IP addresses in different Layer 2
- D. Provides an address that refers to a single device on a given network

Answer: B

NEW QUESTION 274

Which of the following statements best characterize Distance Vector Routing? (Choose 2)

- A. Routers periodically send a copy of their routing table to their neighbor
- B. Routers flood link information throughout the entire area
- C. Network converges quickly (within several seconds) after a topology change
- D. Routers do not have precise knowledge of the entire network topology

Answer: AD

NEW QUESTION 279

.....

Thank You for Trying Our Product

* 100% Pass or Money Back

All our products come with a 90-day Money Back Guarantee.

* One year free update

You can enjoy free update one year. 24x7 online support.

* Trusted by Millions

We currently serve more than 30,000,000 customers.

* Shop Securely

All transactions are protected by VeriSign!

100% Pass Your 4A0-100 Exam with Our Prep Materials Via below:

<https://www.certleader.com/4A0-100-dumps.html>