



**Cisco**

## **Exam Questions 010-151**

Cisco Certified Technician (CCT) for Data Center

## NEW QUESTION 1

### DRAG DROP

Drag the cable or connector on the left to the correct interface on the right.

KVM dongle	Fabric Interconnect to Fabric Extender
straight-through Ethernet cable	console port
mini USB cable	MDS
Twinax cable	C-Series Rack Server
Fiber Channel SFP	from laptop to Management Port
rolled RJ-45 cable	
SAS cable	

Answer:

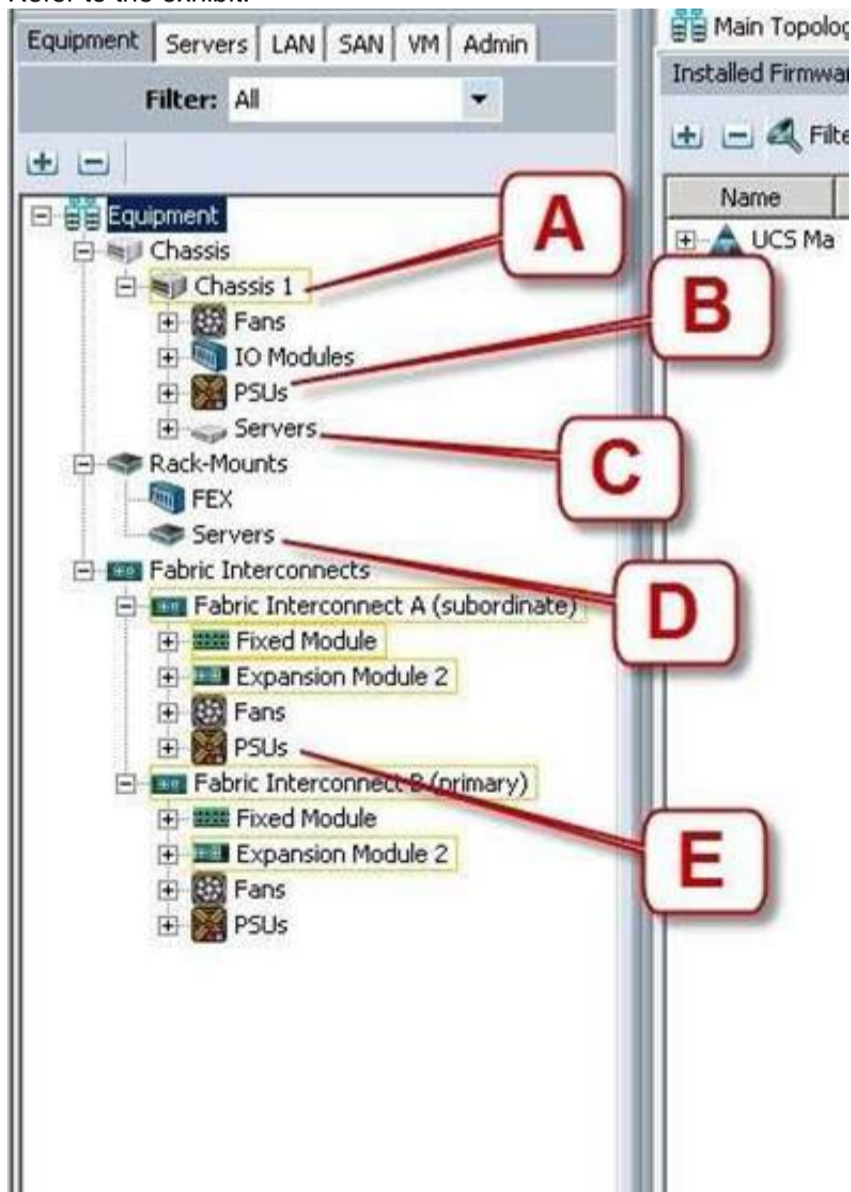
Explanation:

Drag the cable or connector on the left to the correct interface on the right.

KVM dongle	Twinax cable
straight-through Ethernet cable	rolled RJ-45 cable
mini USB cable	Fiber Channel SFP
Twinax cable	KVM dongle
Fiber Channel SFP	straight-through Ethernet cable
rolled RJ-45 cable	
SAS cable	

## NEW QUESTION 2

Refer to the exhibit.



Where is the best place to see the power supply status of the blade server enclosure?

- A. D - Rack-Mounts - Servers
- B. E - Fabric Interconnects A - PSUs
- C. C - Chassis1 - Servers
- D. A - Chassis 1
- E. B - Chassis 1 - PSUs

**Answer:** E

### NEW QUESTION 3

Which three options are the minimum browser requirements to log into the Cisco CIMC GUI? (Choose three.)

- A. Java 1.6 or higher
- B. HTTP and HTTPS enabled
- C. Adobe Flash Player 10 or higher
- D. Internet Explorer version 10
- E. Firefox 26.0
- F. Adobe Shockwave Player 11 or higher

**Answer:** ABC

### NEW QUESTION 4

When the Cisco UCS Manager is used to verify the B- or C-Series device, which two types of Overall Status are acceptable and do not indicate a failure? (Choose two.)

- A. Online
- B. OK
- C. Unassociated
- D. Active

**Answer:** BC

### NEW QUESTION 5

What is the correct path to verify the Overall Status of Chassis 1 | Server 3?

- A. Equipment Tab > Chassis > Chassis 1 > Servers > Server 3 Status tab
- B. Equipment Tab > Chassis > Chassis 1 > Servers > Server 3 General tab
- C. Equipment Tab > Chassis > Chassis 1 > Servers > Server 3 FSM tab
- D. Servers Tab > Chassis > Server 3 General tab
- E. Status Tab > Chassis > Chassis 1 > Servers > Server 3
- F. Admin Tab > Chassis > Chassis 1 > Servers > Server 3 General tab

**Answer:** B

### NEW QUESTION 6

Which three statements about powering down a Cisco UCS C-Series Rack-Mount Server to perform maintenance or replacement are true? (Choose three.)

- A. Standby power mode: Power is supplied only to the service processor and the cooling fans, and it is safe to power off the server from this mod
- B. Power status LE
- C. Green indicates that the server is in main power mode and can be safely powered of
- D. Graceful shutdown: Press and release the power butto
- E. The operating system performs a graceful shutdown, and the server goes to standby mode, which is indicated by an amber power status LE
- F. Disconnect the power cords from the power supplies in your server to completely power off the serve
- G. Only an emergency shutdown can be performed using the power button on the server front pane
- H. The Cisco UCS C-Series Rack-Mount Server has only one power mod

**Answer:** ACD

### NEW QUESTION 7

Which two statements about DIMM replacement in Cisco UCS Servers are true? (Choose two.)

- A. In blade servers, DIMMs can be installed in either 1, 2, 4, or 8 DIMMs per channe
- B. Rack-mount and blade servers have memory fault LEDs that indicate which DIMM requires attentio
- C. In servers that require pairs of DIMMs, the pairs must be identical (manufacturer, size, part #, and so on).
- D. If the memory in a server is not fully populated, you can install DIMMs in any open slo

**Answer:** AC

### NEW QUESTION 8

Which three tools are necessary to console into a Cisco UCS C-Series Rack-Mount Server? (Choose three.)

- A. Cisco DB-9-to-RJ-45 console cable
- B. laptop
- C. monitor
- D. keyboard
- E. KVM dongle

F. USB serial adapter

**Answer:** CDE

#### NEW QUESTION 9

After installation or replacement of a Cisco UCS C-Series Rack-Mount Server, the host does not boot. Which four options should be verified? (Choose four.)

- A. Verify the power source to the equipment
- B. Check for loose HDD cable
- C. Reseat the DIMMs, CPU, and PCI card
- D. Verify that power supplies are receiving power
- E. Reseat the mezzanine card connectors
- F. Check the CPU sockets for bent pins
- G. Check the Cisco IMC for fan fault

**Answer:** ACDF

#### NEW QUESTION 10

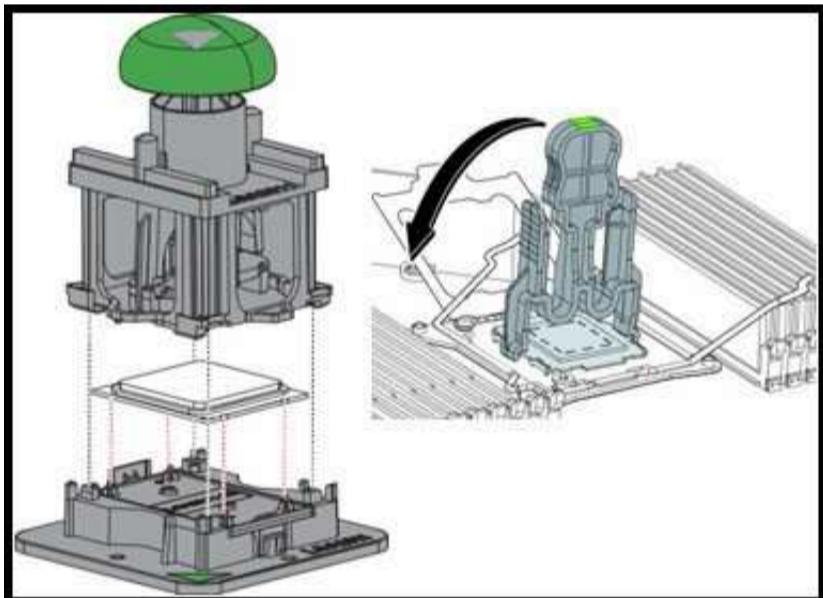
Which three firmware components does the Host Upgrade Utility upgrade? (Choose three.)

- A. Fabric Interconnect firmware
- B. LAN on Motherboard
- C. Cisco UCS Manager
- D. CIMC
- E. System BIOS

**Answer:** BDE

#### NEW QUESTION 10

Refer to the exhibit.



This image shows a CPU Pick-and-Place tool and a CPU Socket Protective Cap Removal tool. Which types of Cisco UCS servers and Intel Xeon processors do these tools support?

- A. Cisco UCS B22 Blade Server, C22 Rack Server, and C24 Rack Server with Intel Xeon E5-2400 Series processors
- B. Cisco UCS B22 Blade Server, C22 Rack Server, and C24 Rack Server with Intel Xeon E5-2600 Series processors
- C. Cisco UCS B200 M3 Blade Server, B420 M3 Blade Server, C220 Rack Server, C240 Rack Server, and C420 Rack Server with Intel Xeon E5-2400 Series processors
- D. Cisco UCS B200 M3 Blade Server, B420 M3 Blade Server, C220 Rack Server, C240 Rack Server, and C420 Rack Server with Intel Xeon E5-2600 Series processors

**Answer:** D

#### NEW QUESTION 15

Up to what speed can Category 5 UTP cable transmit data?

- A. 10 Mb/s
- B. 100 Mb/s
- C. 1000 Mb/s
- D. 10000 Mb/s

**Answer:** C

#### NEW QUESTION 17

Up to what speed can Category 5e UTP cable transmit data?

- A. 10 Mb/s
- B. 100 Mb/s
- C. 1000 Mb/s
- D. 10000 Mb/s

**Answer:** C

**NEW QUESTION 21**

Which two statements about the Cisco Nexus 5596UP switch are true? (Choose two.)

- A. Its power supplies and fan trays are hot-swappable
- B. It supports unified port
- C. It is offered in a one-rack-unit form factor
- D. It has one expansion slot
- E. It supports up to 96 10G BASE-T ports

**Answer:** AB

**NEW QUESTION 24**

Which two Cisco Nexus switches provide the foundation of the Cisco Application Centric Infrastructure? (Choose two.)

- A. Cisco Nexus 7718 switch
- B. Cisco Nexus 9508 switch
- C. Cisco Nexus 7710 switch
- D. Cisco Nexus 93128TX switch
- E. Cisco Nexus 6004 switch

**Answer:** BD

**NEW QUESTION 28**

Which type of optics module is supported by a 6-port 40 GE Cisco Nexus 7000 M2 Series I/O module?

- A. CPAK
- B. QSFP+
- C. SFP/SFP+
- D. CFP

**Answer:** B

**NEW QUESTION 33**

How many 10GBASE-T port licenses are preinstalled on a Cisco Nexus 3064-32T?

- A. 16
- B. 32
- C. 48
- D. 64

**Answer:** B

**NEW QUESTION 36**

Which three steps do you perform to troubleshoot when a rack server powers on with no video? (Choose three.)

- A. Check that the front I/O dongle is properly seated
- B. Check the front I/O cable connection to the motherboard
- C. Check for memory subsystem failure
- D. Verify the power source to equipment
- E. Reseat the DIMMs, CPU, and PCI card

**Answer:** ABC

**NEW QUESTION 37**

Which command saves the active configuration to NVRAM?

- A. copy backup-config active-config
- B. copy running-config startup-config
- C. copy startup-config running-config
- D. copy active-config backup-config

**Answer:** B

**NEW QUESTION 42**

Refer to the exhibit.



Where is the best place to see bootflash free space?

- A. D - High Availability Details
- B. C - Local Storage Information
- C. B - Total Memory
- D. A - Available Memory

Answer: B

#### NEW QUESTION 43

Refer to the exhibit.



What is the name of this rack-mount server?

- A. Cisco UCS C460 Rack-Mount Server
- B. Cisco UCS C420 Rack-Mount Server
- C. Cisco UCS C240 Rack-Mount Server
- D. Cisco UCS C220 Rack-Mount Server

Answer: B

#### NEW QUESTION 47

Which supervisor module is supported by a Cisco Nexus 7700 Series Switch?

- A. third-generation supervisor enhanced module (Sup3E)
- B. second-generation supervisor enhanced module (Sup2E)
- C. first-generation supervisor module
- D. second-generation supervisor module (Sup2)

Answer: B

#### NEW QUESTION 51

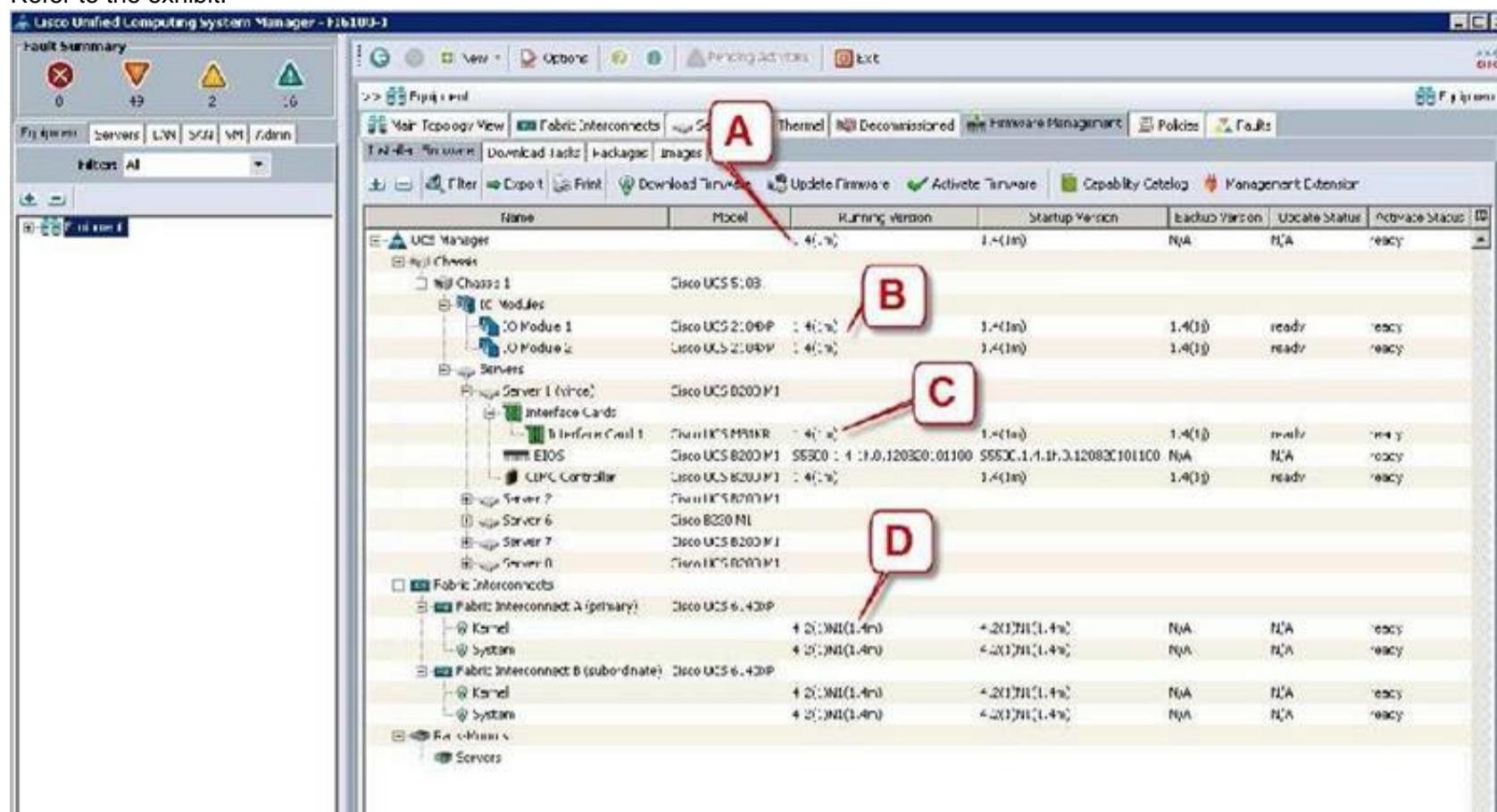
Which type of optics module is supported by a 12-port 100 GE Cisco Nexus 7700 F3 Series I/O module?

- A. CFP
- B. SFP/SFP+
- C. QSFP+
- D. CPAK

Answer: D

## NEW QUESTION 52

Refer to the exhibit.



Which call-out accurately shows the current running version of the Cisco UCS Manager management software?

- A. D - Kernel running version 4.2(1)N(1.4m)
- B. C - Interface Card 1 running version 1.4(1m)
- C. B - IO Module 1 running version 1.4(1m)
- D. A - UCS Manager running version 1.4(1m)

**Answer: D**

## NEW QUESTION 54

Which command can be used to exit to EXEC mode from this current mode?

switch(config-if) #

- A. end
- B. exit
- C. Ctrl-L
- D. quit
- E. Ctrl-C

**Answer: A**

## NEW QUESTION 57

Which processor option is supported in the Cisco UCS C420 M3 Server?

- A. two or four Intel Xeon E7-8800 series multicore processors
- B. up to four Intel Xeon E5-4600 series multicore processors
- C. up to two Intel Xeon E7-4800 series multicore processors
- D. up to two Intel Xeon E5-4600 series multicore processors

**Answer: B**

## NEW QUESTION 61

Which Cisco MDS model supports the most Fibre Channel ports per chassis?

- A. MDS 9250i
- B. MDS 9506
- C. MDS 9513
- D. MDS 9509

**Answer: C**

## NEW QUESTION 65

Which type of connection across the network does a SAN allow for multiple servers to access an unlimited amount of storage devices?

- A. one-to-one
- B. one-to-any
- C. any-to-one
- D. any-to-any
- E. any-to-many
- F. many-to-any

**Answer:** D

**NEW QUESTION 66**

Which two statements about PCIe are true? (Choose two.)

- A. A link that is composed of four lanes is called an x4 lin
- B. The PCIe 1.0 standard doubles the transfer rate compared to PCIe 2.0.
- C. The PCIe standard is a bus-based system in which all the devices share the same bidirectional, 32-bit or 64-bit, parallel signal pat
- D. You can install a PCI Express x8 adapter into an x4 slo
- E. The PCIe link is built around dedicated unidirectional couples of serial, point-to-point connections known as lane

**Answer:** AE

**NEW QUESTION 69**

Which cable is used to access the command-line interface of a Cisco UCS 6120XP Fabric Interconnects?

- A. Ethernet cable
- B. SFP+ Ethernet transceiver cable
- C. KVM cable
- D. console cable

**Answer:** D

**NEW QUESTION 74**

Where do you find the model number of a Cisco MDS 9200 Series chassis?

- A. on the bottom front of the chassis next to the serial number
- B. on the top front of the chassis next to the Cisco logo
- C. on the bottom front of the chassis next to the Cisco logo
- D. on the top front of the chassis next to the serial number

**Answer:** B

**NEW QUESTION 77**

How do you find the serial number of a Cisco UCS 5108 Blade Server chassis?

- A. Use the Cisco UCS Manage
- B. Use the Cisco UCS Assistan
- C. Use the Cisco UCS Applicatio
- D. Use the Cisco UCS Admi

**Answer:** A

**NEW QUESTION 78**

What does the system status LED look like when an over temperature or major alarm occurs on the Cisco UCS 6120XP Fabric Interconnect?

- A. Blinking red
- B. Blinking amber
- C. Red
- D. Amber

**Answer:** B

**NEW QUESTION 81**

Which method is a TCP/IP-based protocol for establishing and managing connections between IP-based storage devices, hosts, and clients?

- A. iSCSI
- B. FCoE
- C. iFCP
- D. FCIP

**Answer:** A

**NEW QUESTION 82**

Which important feature on the front end is provided to the clients by multiple servers that access the same storage devices across the SAN?

- A. storage
- B. security
- C. resiliency
- D. redundancy
- E. recovery

**Answer:** D

**NEW QUESTION 86**

The Ethernet specification details several different fiber optic media types. What is the wire transmission speed for 100BASE-FX Ethernet?

- A. 10000 Mb/s
- B. 1000 Mb/s
- C. 100 Mb/s
- D. 10 Mb/s

**Answer:** C

**NEW QUESTION 87**

.....

## Thank You for Trying Our Product

### We offer two products:

1st - We have Practice Tests Software with Actual Exam Questions

2nd - Questions and Answers in PDF Format

### 010-151 Practice Exam Features:

- \* 010-151 Questions and Answers Updated Frequently
- \* 010-151 Practice Questions Verified by Expert Senior Certified Staff
- \* 010-151 Most Realistic Questions that Guarantee you a Pass on Your First Try
- \* 010-151 Practice Test Questions in Multiple Choice Formats and Updates for 1 Year

**100% Actual & Verified — Instant Download, Please Click**  
**[Order The 010-151 Practice Test Here](#)**