

101-01 Dumps

Riverbed Certified Solutions Associate

<https://www.certleader.com/101-01-dumps.html>



NEW QUESTION 1

Clients connect to which interface on the SteelCentral Controller for SteelHead Mobile?

- A. Primary or aux
- B. Primary only
- C. Inpath0_0 only
- D. Aux only

Answer: C

Explanation: The InPath0_0 interface is used for optimized data transmission. It is used for client connect

NEW QUESTION 2

Packet Mode Optimization is a feature that provides which function?

- A. Load Balancing
- B. UDP Optimization
- C. Path Selection
- D. EtherChannel support
- E. Citrix ICA optimization

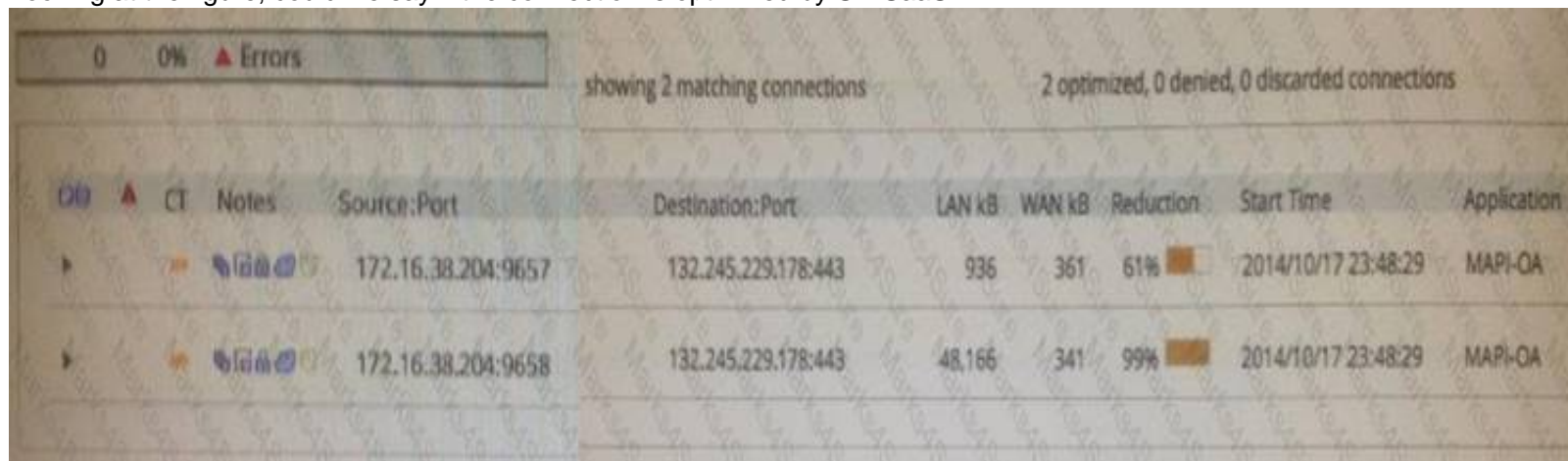
Answer: B



Explanation: References:

<https://support.riverbed.com/bin/support/static/fbunsuu0632vi3jrspe0evbko9/html/u2pi6l52l4drmhq3uhck9tu7h>

NEW QUESTION 3

Looking at the figure, could we say if the connection is optimized by SH SaaS?



CT	Notes	Source:Port	Destination:Port	LAN kB	WAN kB	Reduction	Start Time	Application
		172.16.38.204:9657	132.245.229.178:443	936	361	61%	2014/10/17 23:48:29	MAPI-OA
		172.16.38.204:9658	132.245.229.178:443	48,166	341	99%	2014/10/17 23:48:29	MAPI-OA

- A. Yes, because we see the Cloud icon in the notes Section.
- B. N
- C. You must look in the connection details.
- D. N
- E. Although 132.245.229.178 is a Microsoft address the optimization could be happening through a Cloud SH and not SH SaaS.

Answer: C

NEW QUESTION 4

You have a SteelHead with paths over a public and a private network. You want to encrypt the traffic which goes via the public network. Which are the relevant SteelHead configuration requirements? (Choose two.)

- A. The peer SteelHead must be marked as a Cloud SteelHead in the local SteelHead peering table.
- B. The network must be set to 'public' by ticking the 'Public Network' box in the configuration.
- C. A SteelCentral Controller for SteelHead must be used to push the secure transport configuration.
- D. The In-Path IP address of the SteelHead must be in public address space.

Answer: B

Explanation: B: Because secure transport was built taking hybrid networking into account, you can configure a private and public IP address. The public IP address relies on reachability over a network marked Public. This configuration allows the controller to first be reached over the private network and then the public network.

NEW QUESTION 5

What is required for CIFS prepopulation to succeed?

- A. The SteelHead must be joined to the domain.
- B. The connection from the client-side SteelHead Aux interface must be optimized by the client-side SteelHead.
- C. The connection from the client-side SteelHead primary interface must be optimized by the client-side SteelHead.
- D. It must have enough PFS disk space to store the entire server share.

Answer: C

Explanation: You configure prepopulation only on the client-side SteelHead. You must configure and connect the client-side SteelHead primary interface properly for prepopulation to work. The primary interface must be able to establish connection with the server.
References: <https://support.riverbed.com/bin/support/static/lrj6rq1evg0fnm7pekuq3j2md1/html/vte4p5uj2dkg9k1ukjv82835>

NEW QUESTION 6

What is NOT supported in Virtual in-path deployments?

- A. Server-side initiated connections
- B. Simplified Routing
- C. Path Selection
- D. SteelHead Mobile optimization
- E. HSRP or VRRP gateways

Answer: A

NEW QUESTION 7

A SteelHead in the datacenter is a server side out-of-path mode. What will the source IP address of the client be, as seen by the server?

- A. The client's real IP address
- B. The client's SteelHead in-path IP address
- C. The server-side SteelHead Primary IP address
- D. The server-side SteelHead in-path IP address

Answer: C

Explanation: References:
<https://support.riverbed.com/bin/support/static/a1rkfcik73lqpk3ii1qs6rgsjj/html/b4molvjchlbg2lknt0so321tgs/sh>

NEW QUESTION 8

Which HTTP optimization feature uses an algorithm to determine which objects are likely to be requested for a specific web page, and prefetches them so available when the client makes the request?

- A. Gratuitous 401 Messages
- B. URL Learning
- C. Object Prefetch Table
- D. Strip Compression
- E. Parse-and-Prefetch

Answer: E

Explanation: References:
<https://support.riverbed.com/bin/support/download?did=333>

NEW QUESTION 9

CloudPortal.riverbed.com performs which of the following functions in s SteelHead SaaS deployment? (Choose two.)

- A. Cloud portal is a resource that registers SteelHeads, allowing them to use SteelHead SaaS.
- B. Cloud portal is a resource where the SaaS certificates are managed.
- C. Cloud portal is troubleshooting resource to which all SteelHeads report data.
- D. Cloud Portal collects data reduction and netflow statistics for SaaS applications.
- E. Cloud Portal collects data reduction statistics for SaaS applications.

Answer: AC

NEW QUESTION 10

What feature is not available for optimized connections when using Port or Full transparency over the WAN?

- A. Top Talkers report
- B. Quality of Service marking
- C. VLAN segregation
- D. Path Selection
- E. Connection Pooling

Answer: E

Explanation: Correct addressing, the opposite of transparent Addressing which includes Port or Full transparency, enables you to use the connection pooling optimization feature. Connection pooling works only for connections optimized using correct addressing. Connection pooling enables Steelhead appliances to create several TCP connections between each other before they are needed. When transparent addressing is enabled, Steelhead appliances cannot create the TCP connections in advance because they cannot detect what types of client and server IP addresses and ports are needed.

NEW QUESTION 10

You wish to pass-through traffic to a particular server from a large number of remote sites, all optimized by SteelHeads. You know that it can be done on a single SteelHead. Which type of rule would you configure?

- A. Peering pass-through rule on the server-side SteelHead
- B. Peering pass-through rule on the client-side SteelHead
- C. In-path pass-through rule on the server-side SteelHead
- D. In-path pass-through rule on the client-side SteelHead

Answer: B

Explanation: Configuring Pass-Through Transit Traffic

Transit traffic is data that is flowing through a Steelhead appliance whose source or destination is not local to the Steelhead appliance.

This can be configured through Manual peering and in-path rules. References:

Steelhead Appliance Deployment Guide, Including the Steelhead Mobile Controller, December 2013, page 31-32

<https://support.riverbed.com/bin/support/download?did=a53locldv9s5oc0agjp851iol>

NEW QUESTION 12

A SteelHead is joined to a Windows domain using the Windows Active Directory administrator password. In order to use transparent authentication to optimize signed SMB2 traffic, which of the following is true?

- A. SMB2 signing optimizations must be enabled on the server -side SteelHead only.
- B. SMB2 signing optimizations must be enabled on both the client-side and server-side SteelHeads.
- C. A delegation or replication account must be configured on client-side SteelHead.
- D. A delegation or replication account must be configured on both the client-side and server-side SteelHeads.

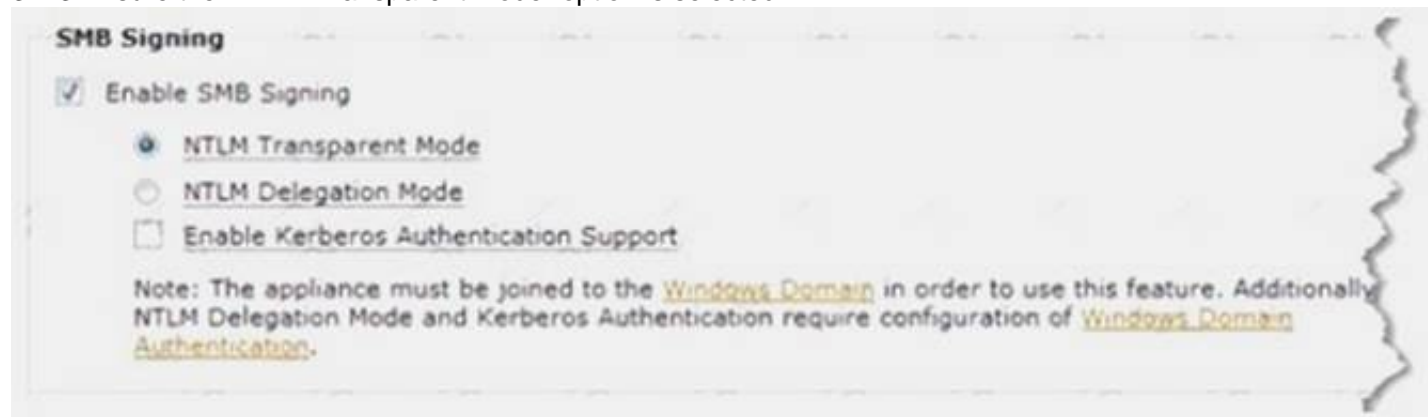
Answer: A

Explanation: Configure the Steelhead appliance to optimize Secure Windows traffic Configuration steps for Signed SMB and Signed SMB2

3.2.1 On the server-side Steelhead navigate to Configure > Optimization > CIFS (SMB1).

3.2.2 Under the SMB Signing section, check the 'Enable SMB Signing' checkbox

3.2.3 Ensure the 'NTLM Transparent Mode' option is selected



References:

Optimization in a Secure Windows Environment, White Paper , pages 35-36

https://support.riverbed.com/download.htm?filename=public/doc/technotes/Windows_security_guide.pdf

NEW QUESTION 16

The auto-discovery probe uses which TCP option number (in decimal)? (Hint: Use the calculator)

- A. 78
- B. 76
- C. 66
- D. Auto-discovery does not use TCP options

Answer: B

NEW QUESTION 21

When determining which model SteelHead is appropriate for deploying into a site, which of the following are important? (Choose three.)

- A. Available WAN link speed
- B. Total number of optimized connections expected
- C. WAN link response time to servers
- D. Data store capacity

Answer: ABD

Explanation: Generally, you select a SteelHead model based on the number of users, the bandwidth requirements, and the applications used at the deployment site. e. However:

References:

SteelHead Deployment Guide Including the SteelCentral Controller for SteelHead Mobile, December 2014 (page 16)

<https://support.riverbed.com/bin/support/download?did=hcsksjoid701t4t8v5s5qomoj7>

NEW QUESTION 26

Which ethernet network cable type can you use when connecting your SteelHead appliance to a switch when all ports are hard coded to 100/FULL?

- A. Crossover
- B. It doesn't matter
- C. Straight

Answer: C

Explanation: To connect a Steelhead appliance to a switch use a straight-through cable. Note: Make sure that you have connected your cables as follows:
References:

Steelhead Appliance Installation and Configuration Guide, Version 7.0.3, May 2012, page 46 <https://support.riverbed.com/bin/support/download?did=614>

NEW QUESTION 31

When would you use the SCPS optimization feature?

- A. It should be used on slow packet switched networks.
- B. When a firewall is present between two SteelHeads.
- C. When satellite links exist between SteelHeads
- D. On very low latency WAN links

Answer: C

Explanation: SCPS is primarily used in the US DOD market for multi-vendor interoperability. It primarily provides TCP Optimization with a focus on satellite networks (high latency & loss) which the Steelhead already has several flavors built in (New Reno, HS-TCP & MX-TCP).

References: <https://splash.riverbed.com/thread/2209>

NEW QUESTION 32

A service provider would like to implement multi-tenanting on a SteelCentral Controller for SteelHead (SCC) such that the customers would be able to run their own reports. Which of the following are true?

- A. SCC does not support multi-tenanc
- B. A virtual or physical SCC would need to be provisioned for each customer.
- C. The SSL certificate for SCC management would need to be distributed to the customers.
- D. RADIUS or TACACS+ would need to be used to offload the authentication to achieve the privileges required.
- E. HTTP server should be disabled for the web UI and only SSL used.
- F. Each customer would have to be configured with privileges for their own SteelHeads and no others.

Answer: A

Explanation: Controller-v is a virtualized appliance of the SteelCentral Controller for SteelHead specifically designed for customers (such as Managed Service Providers) and users who need to centrally manage multiple, separate deployments of the Riverbed system on behalf of their customers.

References:

SteelCentral Controller for SteelHead (Virtual Edition), Installation Guide, Version 9.0, December 2014, page 5

<https://support.riverbed.com/bin/support/download?did=4923qri51etb3sc1ejqk76bauo>

NEW QUESTION 35

With RiOS v9.0 and later, what does a 'topology' consist of? (Choose three.)

- A. Uplinks
- B. Networks
- C. Services
- D. Applications
- E. Sites

Answer: ABE

Explanation: The topology consists of the network, the sites, and the uplinks to the network for the sites. References:

Riverbed Command-Line Interface, Reference Manual, April 2015 (page 453) <https://support.riverbed.com/bin/support/download?did=okk799647eeafskshi2utcul45>

NEW QUESTION 38

With Path Selection, what happens to traffic destined for a remote site where no uplinks have been configured?

- A. Remote uplink configuration is not needed so path selection will be applied normally.
- B. Traffic to that site will be blackholed as there is no path back to the source site.
- C. The local Steelhead will probe the remote Steelhead for its default gateway.
- D. Only the default path can be used as the Steelheads on each site won't be able to agree on a path.

Answer: A

Explanation: Reference <https://support.riverbed.com/bin/support/static/oc1r4qa2pks6172bsj6fte42p4/html/dhatalm0otkq7neeb7h9e9dl8j>

NEW QUESTION 42

True or False? SteelHead SaaS can provide Netflow and SteelFlow to other Riverbed products to monitor and troubleshoot SaaS performance issues.

- A. True
- B. False

Answer: A

Explanation: References:

<http://www.riverbednews.com/2015/07/detect-fix-and-relax-with-steelhead-and-steelcentral/>

NEW QUESTION 44

What is the command to return a Steelhead appliance back to factory defaults?

- A. (config) # restart factory reload
- B. (config) # reload factory
- C. (config) # restart clean
- D. (config) # reload clean empty
- E. (config) # reset factory reload

Answer: E

NEW QUESTION 46

What performance optimizations are available using SteelHead SaaS?

- A. Data reduction using data streamlining
- B. Cloud Intelligence through GeoDNS
- C. Transport, and potential latency reduction by Akamai SureRoute network
- D. HTTPS layer 7 optimization
- E. All of the above

Answer: C

Explanation: References:

<https://www.riverbed.com/document/fpo/Products/SteelHead/DataSheet%20-%20SteelHead%20SaaS.pdf>

NEW QUESTION 51

What is the purpose of Simplified Routing?

- A. Simplified routing will properly report netflow to the profiler in an out-of-path deployment allowing for the use of a “Fake interface ID”.
- B. Simplified routing will allow for redundant gateways such as HSRP and VRRP and GLBP.
- C. Simplified routing enables an out-of-path SteelHead to understand the LAN and WAN side subnets.
- D. Simplified routing will prevent packets traversing the SteelHead more than once when the SteelHead is deployed on a transit subnet (AKA ‘Packet Richohel’).
- E. Simplified routing will prevent VLAN leakage between Layer two domains when optimizing more than one VLAN.

Answer: D

Explanation: References:

<https://www.google.com/url?sa=t&rct=j&q=&esrc=s&source=web&cd=3&cad=rja&uact=8&ved=0ahUKEwjhl>

NEW QUESTION 54

Which statement about virtual SteelHead is NOT true?

- A. It supports Quality of Service and Path Selection.
- B. It can fail to wire using VMware direct bypass feature from ESX 5.0 when utilising a Riverbed hardware bypass card.
- C. It only supports one in-path interface and must be deployed virtually in-path.
- D. It can perform auto discovery in an in-path deployment.
- E. It can perform auto discovery in a virtual in-path deployment.

Answer: C

Explanation: Out-of-Path Deployment is possible.

For a virtual out-of-path (OOP) deployment, connect the primary interface to the physical in-path NIC to be used, and configure the router to forward traffic to this NIC. You must also enable OOP on Virtual Steelhead.

References:

Virtual Steelhead Installation Guide, Version 1.0 (RiOS v7.0.3), July 2012, page 13 <https://support.riverbed.com/bin/support/download?did=624>

NEW QUESTION 55

What files can be gathered from the SteelHead which would be useful for troubleshooting problems with QoS configuration? (Choose two.)

- A. TCP Dump
- B. System Dump
- C. Core Dump
- D. Process Dump

Answer: AB

Explanation: TCP Dump can be used to analyze QoS protocol traffic.

The System Dump Analyzer helps you investigate system dumps to identify potential problems with your Steelhead appliances and Riverbed configuration. Simply upload a system dump and view the results.

References: <https://support.riverbed.com/content/support/help.html>

NEW QUESTION 58

Data store synchronization takes place over which interface or interfaces?

- A. Primary or Aux
- B. Wan0_0
- C. Remote
- D. Inpath0_0
- E. Lan0_0

Answer: A

Explanation: The traffic for RiOS data store synchronization is transferred through either the Steelhead appliance primary or auxiliary network interfaces, not the in-path interfaces.

References:

Steelhead Appliance Deployment Guide Including the Steelhead Mobile Controller, December 2013, page 15

<https://support.riverbed.com/bin/support/download?did=a53locldv9s5oc0agjp851iol>

NEW QUESTION 63

What is the default data store size for a SteelHead Mobile Client?

- A. 1 GB
- B. 5 GB
- C. 10 GB
- D. 20 GB

Answer: C

Explanation: The Data Store Size. A minimum size of 256 MB is required for the data store. The default value is 10 GB. References:

Steelhead Mobile Controller Installation Guide, Version 4.0.3, October 2013, page 29

<https://support.riverbed.com/bin/support/download?did=9ce96i5pn3ota0bp3gkghu4fml>

NEW QUESTION 65

In the CLI, how would you clear the data store on a SteelHead?

- A. Datastore clean
- B. Restart clean
- C. Reboot clean
- D. Datastore wipe clean

Answer: B

Explanation: References:

<https://support.riverbed.com/bin/support/static/5dmuo8qo6ci1inmbo174n3234j/html/iiteb5endqjlbm8a7d9l6pim>

NEW QUESTION 69

Which statement is true regarding licensing of SteelHead SaaS?

- A. Licensing is based on the number of SaaS applications to optimize.
- B. Licensing is based on the number of SteelHead appliances to be enabled.
- C. Licensing is based on the number of users requiring SaaS optimization.
- D. Licensing of SaaS optimization is included in the support contract.

Answer: C

Explanation: With flexible SaaS licensing, all supported SaaS applications can be optimized with a single license, and new applications added with a click of a button. Subscriptions are based on the number of users supported, with no restriction as to which SaaS apps are optimized.

References:

<http://www.riverbed.com/se/solutions/solutions-by-technology/saas-and-cloud-performance.html>

NEW QUESTION 71

The CIFS latency optimization feature provides which performance benefits? (Choose two.)

- A. Read-ahead and write-behind optimizations
- B. Data reduction over the WAN
- C. Latency reduction through transaction prediction
- D. Data encryption over the WAN

Answer: BC

Explanation: CIFS optimization focuses on reducing the impact of WAN round-trip latency of common application and system behavior. RiOS can perform full latency and bandwidth optimization securely for SMB signed traffic. References:
<https://support.riverbed.com/bin/support/static/lrj6rq1evg0fnm7pekuq3j2md1/html/vte4p5uj2dkg9k1ukjv82835>

NEW QUESTION 74

What is the definition of an 'endpoint' in a SteelHead Mobile deployment?

- A. A network interface on a SteelHead Mobile client computer
- B. The data store on a SteelHead Mobile client computer
- C. A SteelHead client computer
- D. SteelCentral Controller for SteelHead Mobile

Answer: C

Explanation: References:
<https://support.riverbed.com/bin/support/static/j8etrrvdlj3thqu6l24c7j4ilv/html/frdn4thkhr2cklif5ihcdjoqpn/shm>

NEW QUESTION 76

On the SteelCentral Controller for SteelHead Mobile, which report would you use to examine data reduction over time?

- A. Desktop Bandwidth
- B. Endpoint Report
- C. Endpoint History
- D. Desktop Traffic

Answer: A

Explanation: The Desktop Bandwidth report answers the following questions:

NEW QUESTION 80

What is the best way to invoke and analyze a very large TCP dump on a remote SteelHead?

- A. Create a TCPDUMP on the SteelHead and analyze it with tshark from the CLI.
- B. Generate a TCPDUMP on the SteelCentral Controller for SteelHead (SCC) and upload it from the SCC.
- C. Use Riverbed NetProfiler to dissect the TCPDUMP.
- D. Connect to the SteelHead with HTTP(s), download the TCPDUMP and open it in Wireshark.
- E. Enable the embedded NetShark and connect to it using Riverbed Packet Analyzer software.

Answer: E

NEW QUESTION 82

Which Simplified Routing mode is required when a Virtual SteelHead is deployed in a virtual in-path configuration?

- A. All
- B. None
- C. Destination Only
- D. Destination and Source

Answer: B

Explanation: The None option is required for virtual in-path deployments.
References:SteelheadAppliance Deployment Guide, Including the Steelhead Mobile Controller, December 2013, page 194

NEW QUESTION 85

What is the CLI command for starting the Configuration Wizard?

- A. # configuration wizard start
- B. (config) # configuration jump-start
- C. # configuration start
- D. (config) # wizard start
- E. restart clean

Answer: B

NEW QUESTION 88

When configuring optimization for an SSL web application server, which additional configuration steps are required on the SteelHead from a default configuration? (Choose three).

- A. Create a trust relationship between the SteelHeads.
- B. Install the SSL server certificate and key or proxy server certificate on the server side SteelHead.

- C. Create an in-path rule on the client side SteelHead.
- D. Install a proxy server certificate on the client side SteelHead.
- E. Enable HTTP optimization on both SteelHeads.

Answer: ABC

Explanation: References: <https://support.riverbed.com/bin/support/static/lrj6rq1evg0fnm7pekuq3j2md1/html/vte4p5uj2dkg9k1ukjv82835>

NEW QUESTION 90

Which report would you use to monitor disk utilization in the SteelHead management console user interface?

- A. Reports > Data Store Cost
- B. Reports > Data Store Disk Load
- C. Reports > Data Store Hit Rate
- D. Reports > Data Store Status

Answer: B

Explanation: The Data Store Disk Load report summarizes the data store disk load due to SDR-only as related to the benchmarked capacity of the data store. Consider any value under 100 as healthy. Any value higher than 100 might indicate disk pressure. When a value is consistently higher than 100, contact Riverbed Professional Services for guidance on reconfiguring the data store to alleviate disk pressure. The Data Store Disk Load report answers the following questions:

NEW QUESTION 94

How does the SteelHead monitor path availability in Path Selection?

- A. Path availability is not monitored until traffic is sent over that path
- B. Then the SteelHead uses standard TCP timeouts to monitor path integrity.
- C. The SteelHead uses ICMP ping to monitor path availability.
- D. The SteelHead creates an inner channel on each path and keep-alive packets are used to track availability.
- E. UDP keep-alives are periodically sent across each path
- F. If a SteelHead does not receive two of these within a pre-defined timeout period, the path is declared down.

Answer: B

Explanation: RiOS 8.5 path selection technology provides the ability to deterministically re-direct select traffic and application flows through alternate WAN routes based on service metrics, such as path availability and priority. Availability is determined by whether the host at the remote end of a path can be reached via end-to-end Internet Control Messaging Protocol (ICMP):
References:
<http://www.riverbednews.com/2013/08/path-selection-what-you-need-to-get-started/>

NEW QUESTION 96

You have recently upgraded from a CX 555 to a CX 1555 for additional capacity. How would you migrate the data store from the old to the new model?

- A. Configure data store synchronization between the two appliances.
- B. Move the disks into the new appliance and power on.
- C. Use the SteelCentral Controller for SteelHead External Backup feature to backup the store to an external server and then restore it to the new appliance.
- D. It is not possible to synchronize two differently sized data stores.

Answer: C

Explanation: External SCC Backups and High Availability
The SCC stores SteelHead backups. The SCC can back up its own configuration (which includes the configurations of the SteelHeads) to an external file server (NFS, SSH, or CIFS).

NEW QUESTION 99

Simplified Routing is recommended when:

- A. The SteelHead is in a different subnet from the client and servers.
- B. The SteelHead is in the same subnet as the clients and servers.
- C. The SteelHead is in the same subnet as the servers or clients.

Answer: A

Explanation: Enabling simplified routing eliminates the need to add static routes when the steelhead appliance is in a different subnet from the client and the server.

Note: Simplified routing changes the process used to select the destination Ethernet address for packets transmitted from in-path interfaces. Simplified routing collects the IP address for the next hop MAC address from each packet it receives to address traffic. With simplified routing, can use either the WAN or LAN-side device as a default gateway. The steelhead appliance learns the right gateway to use by watching where the switch or router sends the traffic, and by associating the next-hop Ethernet addresses with IP addresses.

References:
http://h20564.www2.hp.com/hpsc/doc/public/display?docId=mmr_kc-0127411

NEW QUESTION 104

What is the function of Enhances Auto-Discovery?

- A. It enables optimization to services behind SteelHead Mobile clients.
- B. It sends additional TCP options to detect the last SteelHead in a chain.
- C. It maintains client and server IP addresses during discovery.
- D. It sets up additional connection pool connections to improve auto discovery speed.

Answer: B

Explanation: References:

<https://support.riverbed.com/bin/support/static/oc1r4qa2pks6172bsj6fte42p4/html/dhatalm0otkq7neeb7h9e9dl8j>

NEW QUESTION 107

Which endpoint operations can you perform from the SteelCentral Controller for SteelHead Mobile web interface? (Choose four.)

- A. Reset Client-Server Connection
- B. Request System Dump
- C. Request TCP Dump
- D. Reset Client-Controller Connection
- E. Request Memory Dump

Answer: ABCE

Explanation: Reset Client-SMC Connection: Select the check box next to one or more endpoint user names, and click Reset ClientSMC Connection to reset the connection between the Mobile Controller and the endpoint client.

Request System Dump: Select the check box next to one or more endpoint user names and click Request System Dump to upload the files.

Request TCP Dump: Select the check box next to one or more endpoint user names and click Request TCP Dump to upload the files.

Request Memory Dump: Uploads the memory dump files. References:

Steelhead Mobile Controller User's Guide, Version 4.0.2, May 2013, Page 150 <https://support.riverbed.com/download.htm?did=874>

NEW QUESTION 112

A user uploads a Word document to a Sharepoint server via HTTP, optimized by two SteelHeads. Another user at the same location as the first downloads the same Word document via CIFS.

What speed should the second user expect?

- A. Fast as the data patterns are recognized by SDR regardless of direction or which unencrypted application protocol is used
- B. Slow as the data is being transported via a different protocol and the SteelHead needs to learn the new patterns
- C. Fast as the SteelHead now has a local copy of the file in the web proxy cache
- D. Slow as the data is travelling in a different direction and the SteelHead needs to learn the new patterns

Answer: C

Explanation: RiOS has provided CIFS optimization since version 1.0, with ongoing enhancements in each subsequent version. CIFS optimization focuses on reducing the impact of WAN round-trip latency of common application and system behavior, including the Microsoft Office product suite, general file access, and remote printing.

References: <https://support.riverbed.com/bin/support/static/lrj6rq1evg0fnm7pekuq3j2md1/html/vte4p5uj2dkg9k1ukjv82835>

NEW QUESTION 114

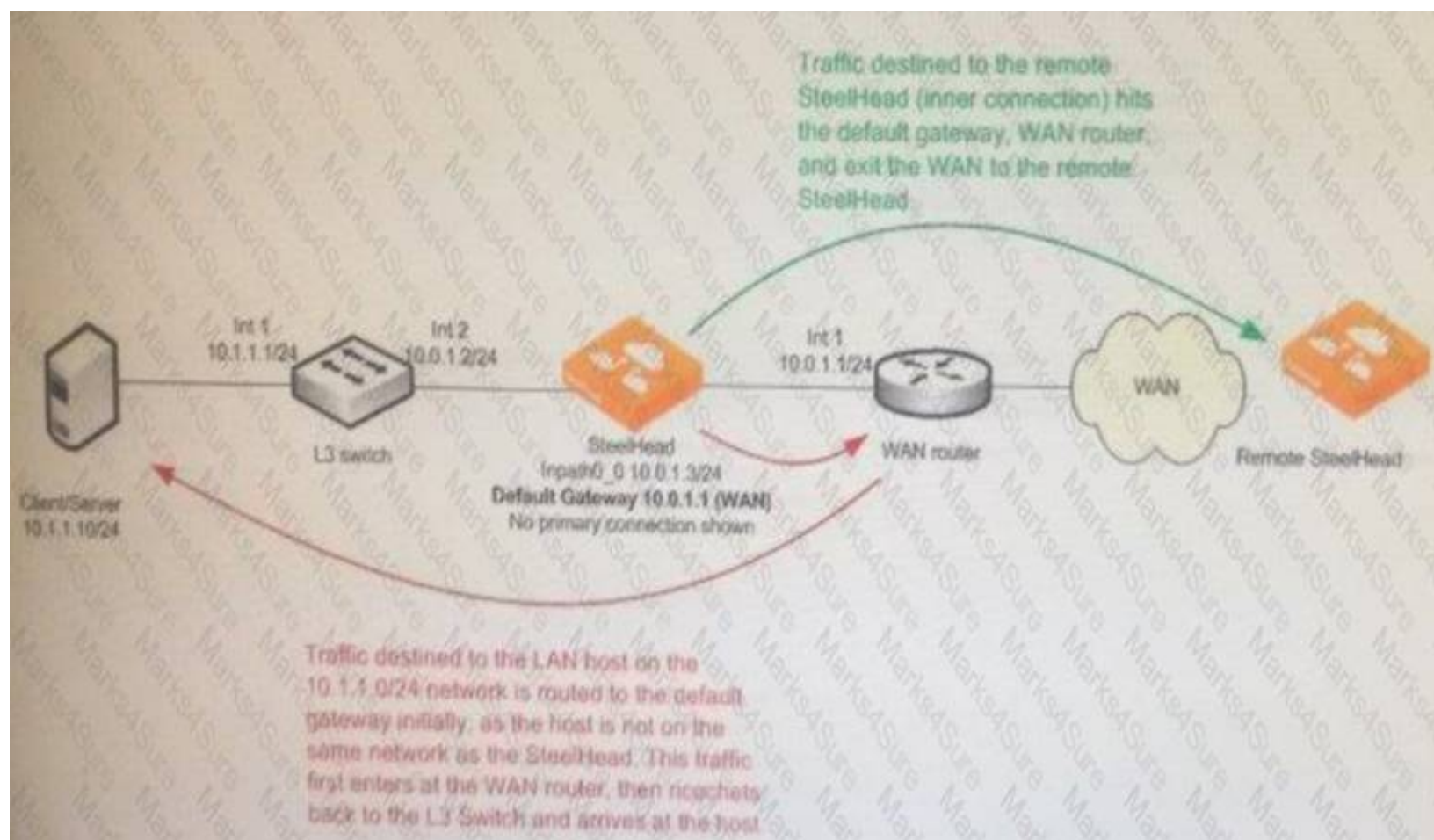
What is the command to clear all statistics on a Steelhead appliance?

- A. (config) # stats clear-all
- B. (config) # clear-all stats
- C. (config) # reset stats
- D. (config) # reload stats clean
- E. (config) # clear stats

Answer: A

NEW QUESTION 118

Which SteelHead feature would resolve the packet ricochet seen in the diagram below?



- A. Simplified Routing
- B. Full Transparency
- C. Path Selection
- D. Connection Forwarding

Answer: A

Explanation: Simplified routing avoids situations when a packet traverses a SteelHead more than once—this behavior is called packet ricochet. In environments where the SteelHead is installed in a subnet different than the clients and servers, simplified routing prevents packet ricochet for optimized traffic from the SteelHead.

Here there is a Packet Ricochet When the SteelHead Default Gateway Is on the WAN shows an example of packet ricochet when the SteelHead default gateway is configured for the WAN router, the host sits on a different network than the SteelHead, and simplified routing is not enabled.

References: <https://support.riverbed.com/bin/support/static/fbunsuu0632vi3jrspe0evbko9/html/u2pi6l52l4drmhq3uhck9tu7h>

NEW QUESTION 123

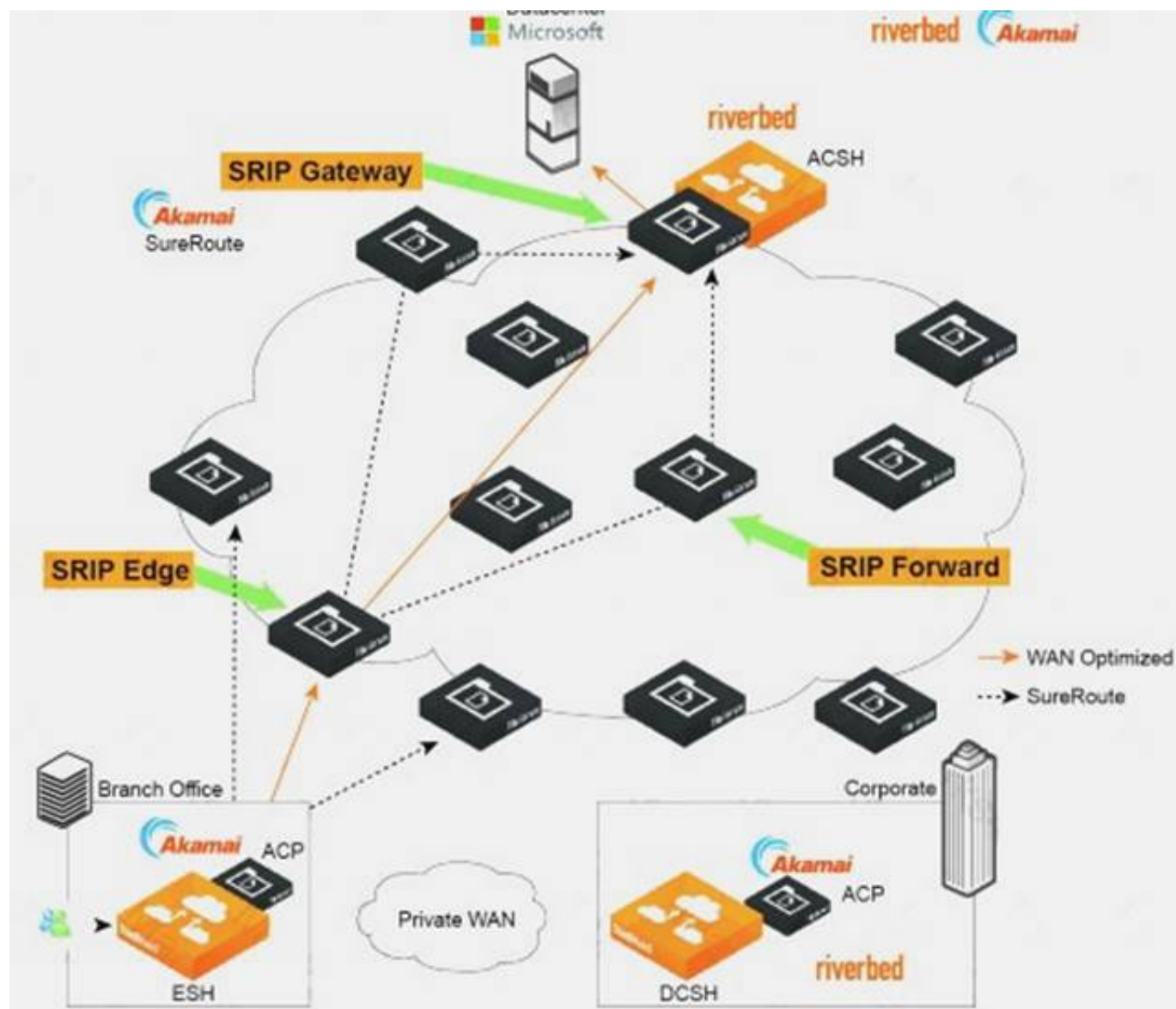
Which of the following correctly describe the two topology deployment modes of SteelHead SaaS? (Select two.)

- A. In direct mode, the cloud optimized traffic is encapsulated at the branch-side SteelHead appliance.
- B. Direct mode cannot be used if the internet traffic exit points is centralized at the customer data center and not available from the branch.
- C. In backhaul mode the cloud-optimized traffic is encapsulated at the data center but the SSL optimization starts at the branch.
- D. Backhaul mode allows to optimize traffic to the cloud from the data center without the need of a branch SteelHead.

Answer: AC

Explanation: A: In direct mode, the ESH appliance encapsulates the traffic and sends it directly to a server in the Akamai (Branch Office xample) network. Akamai SureRoute optimization technology ensures that the traffic is forwarded through the Akamai network along the fastest path toward its destination at the data center hosting the SaaS application.

Figure: Example of Direct Branch Internet Deployment

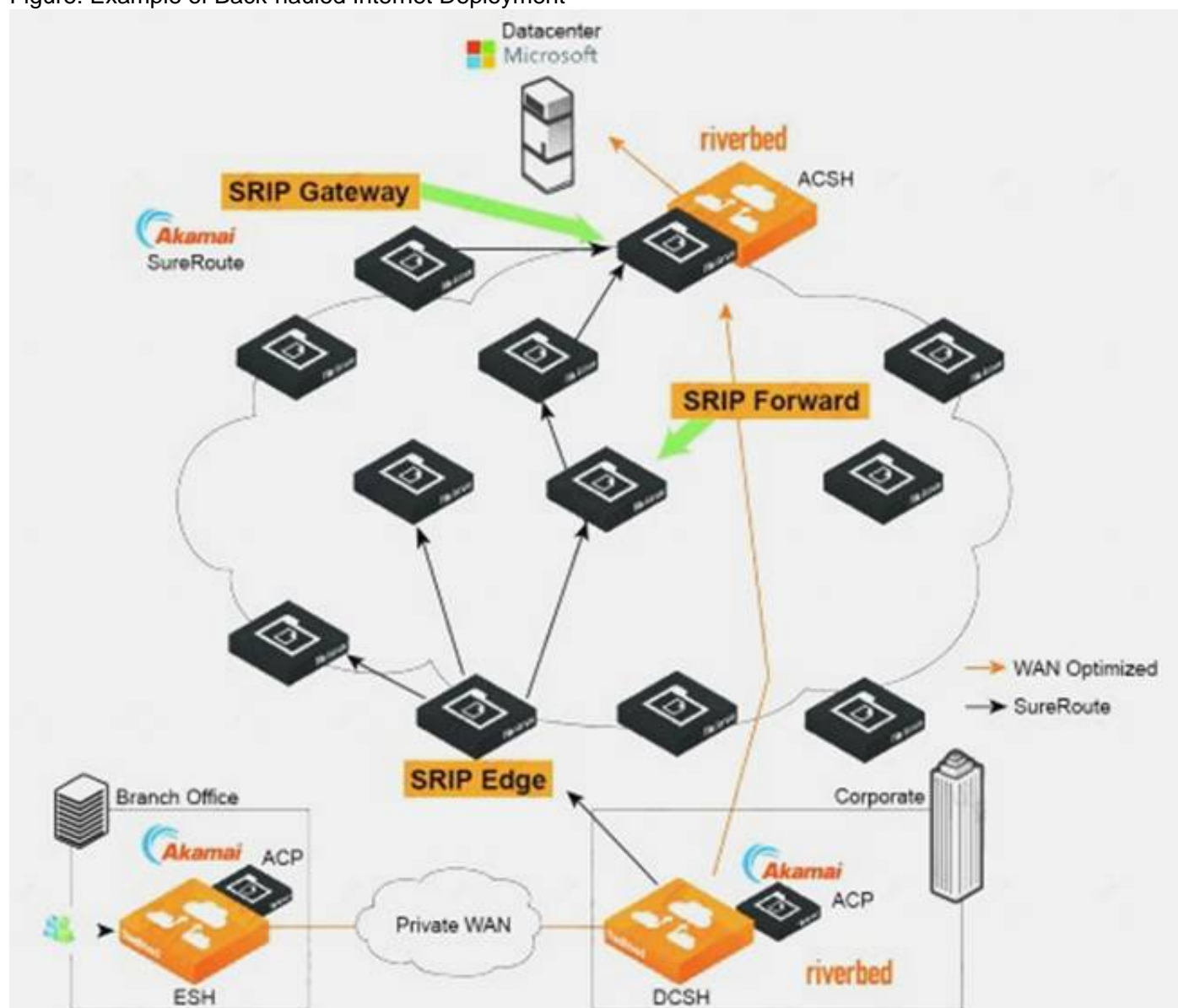


C: Back-hauled Internet Deployment

In this topology, the branch does not have its own connection to the Internet. All traffic directed to the Internet is back-hauled over a private WAN or VPN to the organization's data center.

Although the DCSH encapsulates the traffic, it plays no role in the SSL optimization process. SSL optimization still takes place between the ESH appliance and the ACSH. Ensure that you establish the SSL peering trust between them.

Figure: Example of Back-hauled Internet Deployment

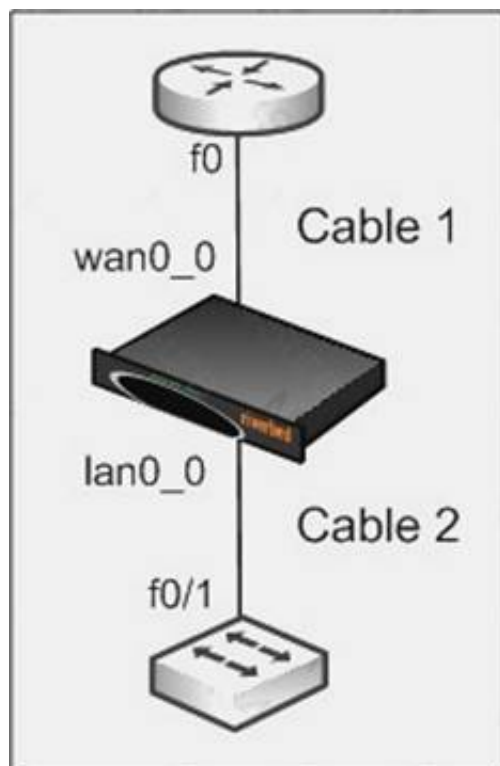


References:

SteelHeadSaaS User's Guide, RiOS Version 9.1, July 2015, pages 8-9

NEW QUESTION 125

Refer to the exhibit.



Which of the following correctly describes the combination of cable types used in a fail-to-wire scenario for the interconnected devices shown in the exhibit? Assume Auto-MDIX is not enabled on any device.

- A. Cable 1: Crossover, Cable 2: Crossover
- B. Cable 1: Straight-through, Cable 2: Straight-through
- C. Cable 1: Crossover, Cable 2: Straight-through
- D. Cable 1: Straight-through, Cable 2: Crossover

Answer: C

NEW QUESTION 130

What is the smallest and largest datastore size one can allocate for a Steelhead Mobile client?

- A. 256 MB and 20 GB on disk
- B. 1 GB and 100 TB on disk
- C. 256 MB and 1 TB in memory
- D. 64 KB and 512 KB in memory
- E. 10% and 50% of the available disk space

Answer: A

NEW QUESTION 133

What is the maximum datastore size?

- A. 15 MB
- B. 5 GB
- C. 20 GB
- D. 10 TB
- E. 50 TB

Answer: C

NEW QUESTION 135

How many TCP connections can an Interceptor appliance set up per second?

- A. 1000
- B. 2000
- C. 3000
- D. 4000
- E. 5000 or over

Answer: E

NEW QUESTION 139

The Central Management Console appliance can scale to support a range of Steelhead appliances and is available in the following physical form factor(s):

- A. Desktop, 1U and 3U
- B. 1U and 3U
- C. 3U only
- D. 1U only
- E. 1U, 2U, 3U

Answer: D

NEW QUESTION 142

Which of the following expansion cards are available for the Steelhead appliance xx50 series? (Select 2)

- A. Four-Port Copper Gigabit-Ethernet PCI-E
- B. Four-Port SX Fiber Gig-E PCI-X
- C. Five-Port Copper Gigabit-Ethernet PCI-E
- D. Two-Port SX Fiber Gigabit-Ethernet PCI-E
- E. Three-Port SX Fiber Gig-E PCI-X

Answer: AD

Explanation: Topic 3, Exam Pool C

NEW QUESTION 147

Which of the following are configurable attributes of an Interceptor appliance? (Select 3)

- A. Synchronizing datastore
- B. Sharing connection state with a parallel Interceptor appliance
- C. Redirect to a Steelhead appliance cluster
- D. Failover to another Interceptor appliance

Answer: BCD

NEW QUESTION 148

What benefit does the Interceptor appliance provide? (Select 3)

- A. Load balances connections across Steelhead appliances
- B. Provides redundancy in case of Steelhead appliance failure
- C. Maintains stateful connection table if a Steelhead appliance fails
- D. Allows clustering of multiple Steelhead appliances

Answer: ABD

NEW QUESTION 150

The Steelhead Mobile client is supported on the following client platforms: (Select 3)

- A. Windows 2000
- B. PDA
- C. Windows XP
- D. Vista-32
- E. Linux

Answer: ACD

NEW QUESTION 152

What default DNS entry is required for CMC touchless auto-configuration?

- A. riverbedcmc
- B. cmcsteelhead
- C. cmcriverbed
- D. steelheadcmc

Answer: A

NEW QUESTION 155

Which of the following interfaces can be configured using the configuration wizard?

- A. Primary only
- B. Primary and inpath0_0
- C. Inpath0_0 only
- D. Primary and auxiliary

Answer: B

NEW QUESTION 156

A Steelhead Mobile Controller (SMC) can provide licenses for up to how many concurrent Steelhead Mobile clients?

- A. 100
- B. 256
- C. 512
- D. 2000 and above

Answer: D

NEW QUESTION 159

The key difference between the "Degraded" status and the "Critical" status is:

- A. With degraded, only one alarm has been triggered, whereas with critical, two or more alarms were triggered
- B. With degraded, the Steelhead appliance is still optimizing traffic, whereas with critical the Steelhead may or may not be optimizing
- C. With degraded, there is no optimization due to a software problem, whereas with critical there is no optimization due to a hardware problem
- D. With both degraded and critical, optimization functions as normal however administrator attention is required

Answer: B

NEW QUESTION 161

What are some key reasons for purchasing an Interceptor appliance? (Select 3)

- A. Redirect traffic to a pool of Steelhead appliances
- B. Failover for Steelhead appliances
- C. No single point of failure in a redundant Steelhead appliance deployment
- D. Centralize reporting and management
- E. Increase throughput of connections

Answer: ABC

NEW QUESTION 166

An employee who has just installed Steelhead Mobile onto her workstation notices that she never gets any reduction. It always says 0%.

The status of the Mobile client appears to be: Optimization State: Healthy

Controller Status: Connected: Branch

The reason she is seeing 0% reduction statistics is:

- A. Location Awareness is in effect
- B. The Steelhead appliance in the branch office has currently failed
- C. There are no more Steelhead Mobile licenses available
- D. The Steelhead Mobile Controller is not available as it has been relocated to a branch office
- E. Steelhead Mobile does not work on workstations, only laptops

Answer: A

NEW QUESTION 169

Which of the following is not a policy type available on the CMC appliance?

- A. Optimization policy
- B. SDR policy
- C. Security Policy
- D. Networking policy

Answer: B

NEW QUESTION 171

Overcoming TCP chattiness and latency are functions of:

- A. Storage Streamlining
- B. Transport Streamlining
- C. Data Streamlining
- D. Application Streamlining

Answer: B

NEW QUESTION 176

Which of the following best describes Link State Propagation (LSP)?

- A. LSP is not a Steelhead appliance feature
- B. LSP monitors the LAN/WAN pair and reflects the up/down status
- C. LSP is an enhancement to auto negotiation
- D. LSP is an enhancement to Spanning Tree

Answer: B

NEW QUESTION 181

When implementing datastore synchronization, a master and backup Steelhead appliance:

1. Must be within 10 ms of latency between the synchronizing Steelhead appliances
2. Must have the same datastore size
3. Must be running the same major version RiOS software
4. Must have the same hostname

- A. 1, 2, and 3
- B. 2 and 3
- C. 2, 3, and 4
- D. 3 and 4
- E. 1, 2, 3, and 4

Answer: A

NEW QUESTION 184

On the Interceptor appliance what is the size of the datastore?

- A. 0 MB
- B. 600 MB
- C. 1.2 TB
- D. 3.6 TB
- E. 4.8 TB

Answer: A

NEW QUESTION 189

What effect will enable SDR-M (Scalable Data Referencing – Memory) have on a Steelhead appliance in production?

- A. An increase in overall LAN throughput
- B. SDR would occur in RAM until flushed to disk
- C. An increase in overall WAN throughput
- D. SDR would occur on disk and backed up to RAM for future lookups
- E. SDR must occur over the primary interface directly to RAM

Answer: A

NEW QUESTION 194

Steelhead Mobile licensing is based on what model?

- A. Concurrent usage
- B. Per seat
- C. Hybrid per seat/concurrent usage
- D. Steelhead Mobile does not use a licensing model as long as you do not exceed the capacity of the SMC

Answer: A

NEW QUESTION 198

Steelhead Mobile enables you to: (Select 3)

- A. Optimize UDP traffic
- B. Optimize ICMP traffic
- C. Optimize TCP traffic
- D. Optimize satellite TCP traffic
- E. Optimize TCP traffic over General Packet Radio Service (GPRS)

Answer: CDE

NEW QUESTION 202

What Steelhead appliance interface must be connected in order to peer with the Interceptor appliance for optimization?

- A. Primary
- B. WAN
- C. LAN
- D. AUX
- E. Console

Answer: B

NEW QUESTION 207

A customer has purchased 30 Steelhead appliances. Which product(s) can be used to ease the deployment of these Steelhead appliances?

- A. Riverbed Steelhead Management Console
- B. Microsoft SCCM
- C. Riverbed Cascade
- D. Riverbed Central Management Console
- E. All of the above

Answer: D

NEW QUESTION 211

It is possible to backup your RSP slots using. (Select 2)

- A. ftp
- B. http
- C. scp
- D. https
- E. tftp

Answer: AC

NEW QUESTION 212

On a remote Steelhead appliance, what is the easiest way to tell what model of Steelhead appliance you are working with using the Management Console (GUI)?

- A. On the Home page of the Steelhead appliance
- B. Go to Configure > Optimization > General Service Settings
- C. Use the “show module” CLI command
- D. Go to Reports > Maintenance > System Info
- E. Go to Configure > Configurations > Boot Order Info

Answer: A

NEW QUESTION 217

Which feature is highly recommended when deploying Steelhead Mobile?

- A. Automatic peering (using enhanced auto-discovery) enabled on Steelhead appliances
- B. Connection forwarding (using port 7850 for neighbor relationships) on Steelhead appliances
- C. Pass-through rules to minimize overlapping opens
- D. Fixed-target rules directed to port 7850 of all branch office Steelhead appliances

Answer: A

NEW QUESTION 222

If a file is not optimized for more than one user at a time, this indicates:

- A. Steelhead appliance has entered admission control
- B. Steelhead appliance is configured with the incorrect speed or duplex on the Primary interface
- C. Steelhead appliance is configured with the incorrect speed or duplex on the in-path interfaces
- D. Steelhead appliance is not able to acquire a “File Hold Key (FHK)”
- E. Steelhead appliance is not able to acquire an “Opportunistic Lock (oplock)”
- F. Steelhead appliance is not able to acquire a “Double Link (doulink)”

Answer: E

NEW QUESTION 227

Which of the following are supported features on the Interceptor appliance running version 2.0.x? (Select 3)

- A. EtherChannel
- B. Full transparency
- C. Port transparency
- D. QoS
- E. NetFlow

Answer: ABC

NEW QUESTION 228

Using an Interceptor appliance is an alternative to what network designs? (Select 2)

- A. WCCP
- B. PBR
- C. Connection Forwarding
- D. Fixed-target rules
- E. Peering rules

Answer: AB

NEW QUESTION 233

Which xx50 Steelhead appliance models provide both inpath0_0 and inpath0_1 interfaces without adding additional network cards? (Select 3)

- A. Steelhead 550
- B. Steelhead 6050
- C. Steelhead 1050
- D. Steelhead 250
- E. Steelhead 2050

Answer: BCE

NEW QUESTION 238

Steelhead appliances models vary by supported bandwidth. This bandwidth refers to:

- A. All inbound and outbound traffic
- B. All outbound traffic
- C. All optimized inbound and optimized outbound traffic
- D. All optimized outbound traffic
- E. VoIP traffic only

Answer: D

NEW QUESTION 241

Login to the CMC appliance can be authenticated against what type servers? (Select 3)

- A. RADIUS
- B. Local
- C. XAUTH
- D. TACACS+
- E. Kerberos

Answer: ABD

NEW QUESTION 242

When deploying a Steelhead appliance in a server-side out-of-path deployment, which of the following is true?

- A. You need fixed target rules in both directions
- B. You need a fixed target rule in the server-side Steelhead appliance pointing to the client-side Steelhead appliance
- C. You need a fixed target rule in the client-side Steelhead appliance pointing to the Primary IP address of the server-side Steelhead appliance
- D. You need a fixed target rule in the client-side Steelhead appliance pointing to the In-path IP address of the server-side Steelhead appliance

Answer: C

NEW QUESTION 247

When deploying a Steelhead appliance in a physical in-path configuration, the cable between the Steelhead and the router should be:

- A. Straight-through
- B. Crossover
- C. Token Ring
- D. None of the above

Answer: B

NEW QUESTION 251

To ensure peak operational performance, it is recommended that the Steelhead appliance be rebooted:

- A. Once every week
- B. Once every month
- C. Rebooting the Steelhead appliance is not recommended as a performance enhancing maintenance activity
- D. Rebooting the Steelhead appliance is not recommended because all network activity stops until it comes back

Answer: C

NEW QUESTION 254

The Admission Control alarm is triggered when a Steelhead appliance encounters:

- A. Bandwidth utilization exceeding the model capabilities
- B. A number of optimized connections exceeding the model capabilities
- C. A datastore that has just reached full capacity and cannot accept any more SDR data
- D. A problem that it cannot control but is not sure what it is

Answer: B

NEW QUESTION 259

Rules that dictate the types of TCP traffic that a Steelhead Mobile client should optimize are configured in the:

- A. Acceleration policy
- B. Authorization policy
- C. Peering rules
- D. Fixed target policy

Answer: A

NEW QUESTION 263

Which of the following platforms provide support for HighSpeed TCP?

- A. All Steelhead modules designed for large offices
- B. All models except the desktop units
- C. All appliance models
- D. Only the mid-size office
- E. Only really big appliances 80lbs or greater

Answer: C

NEW QUESTION 268

When configuring CIFS prepopulation, which of the following parameters must be configured for prepopulation to function? (Select 3)

- A. Remote path
- B. Username
- C. CMC hostname
- D. Password
- E. RADIUS authentication

Answer: ABD

NEW QUESTION 272

What is the default QoS classification mode?

- A. Flat
- B. Hierarchical
- C. WRED
- D. LLQ
- E. FEC

Answer: A

NEW QUESTION 273

To help secure the server private key on the server-side Steelhead appliance, which of the following features can be used?

- A. TACACS+ authentication
- B. RADIUS authentication
- C. Secure Vault
- D. Datastore encryption

Answer: C

NEW QUESTION 278

Which of the following parameters can be used to classify traffic into QoS classes? (Select 3)

- A. Destination subnet
- B. Source subnet
- C. VLAN
- D. WCCP Mask or HASH
- E. Service Groups

Answer: ABC

NEW QUESTION 279

How many WAN visibility modes are available?

- A. 1
- B. 2
- C. 3
- D. 4
- E. 5

Answer: C

Explanation: Topic 2, Exam Pool B

NEW QUESTION 284

A major difference between MX-TCP and HighSpeed TCP is:

- A. MX-TCP backs off in the case of congestion, HighSpeed TCP does not
- B. HighSpeed TCP backs off in the case of congestion, MX-TCP does not
- C. MX-TCP can use TCP window scaling, HighSpeed TCP cannot
- D. HighSpeed TCP can use TCP options, MX-TCP cannot

Answer: B

NEW QUESTION 285

When performing datastore synchronization between two Steelhead appliances, segments of data are exchanged between them. Which interfaces can be used for datastore synchronization? (Select 2)

- A. In-path
- B. Primary
- C. Auxiliary
- D. WAN
- E. Remote

Answer: BC

NEW QUESTION 286

When upgrading a Steelhead appliance from the Management Console, the new image is always installed on the:

- A. Booted partition
- B. Backup partition
- C. Both the boot and backup partitions
- D. The image is only installed into a partition after a reboot (from a temporary location)
- E. Upgrades can only be done from the CLI

Answer: B

NEW QUESTION 288

What is the default WAN visibility mode?

- A. Correct Addressing
- B. Port Transparency
- C. Full Addressing
- D. Full Transparency
- E. Transparency

Answer: A

NEW QUESTION 290

What are the benefits of Application Streamlining?

- A. Applications run up to 100 times faster
- B. Reduces application chattiness by 65-98%
- C. Accelerates the most important applications, such as CIFS, MAPI, NFS, HTTP/S, Lotus Notes, and MS-SQL
- D. All of the above
- E. None of the above

Answer: D

NEW QUESTION 292

Can you manage your Virtual Steelhead appliance from a Central Management Console?

- A. Yes, this is possible
- B. Only on out-of-path deployments
- C. Only on in-path deployments
- D. There is a dedicated management device for Virtual Steelhead appliances
- E. You can only manage your Virtual Steelhead appliances using a virtualized console

Answer: A

NEW QUESTION 295

A Steelhead appliance can synchronize its datastore with a maximum of how many other Steelhead appliances?

- A. 1
- B. 2
- C. 3
- D. 4

Answer: A

NEW QUESTION 297

What is the default action of a Steelhead appliance when it hits the bandwidth limit?

- A. Fail-to-wire
- B. Inbound Optimized traffic is shaped to the specifications of the Steelhead appliance
- C. Passthrough all connections
- D. Passthrough new connections
- E. Outbound Optimized traffic is shaped to the specifications of the Steelhead appliance

Answer: E

NEW QUESTION 302

What are valid WAN visibility modes of the Steelhead appliance? (Select 3)

- A. Correct Addressing
- B. Port Transparency
- C. Full Addressing
- D. Full Transparency
- E. Transparency

Answer: ABD

NEW QUESTION 304

Which of the following database applications can the Steelhead appliance optimize with the Application Streamlining module?

- A. IBM DB2
- B. Sybase
- C. MySQL
- D. Microsoft SQL
- E. Great Plains

Answer: D

NEW QUESTION 305

Which of the following status states of the Steelhead appliance are valid? (Select 3)

- A. Degraded
- B. Normal
- C. Healthy
- D. Critical
- E. Failed

Answer: ACD

NEW QUESTION 307

Assuming the Steelhead appliance has a 250 GB datastore capacity, by enabling PFS on a supported Steelhead appliance which of the following would be true:

- A. The datastore capacity will shrink due to the amount of space used by PFS
- B. The datastore capacity will grow due to the amount of space added by PFS
- C. The datastore capacity does not change
- D. The datastore capacity will have to be reformatted

Answer: C

NEW QUESTION 312

Steelhead appliances increase. (Select 2)

- A. Application performance
- B. Data transfer speed over the WAN
- C. Data transfer speed over the LAN
- D. Quality of service
- E. WORM stability
- F. Prototyping

Answer: AB

NEW QUESTION 315

After deployment of Steelhead appliances, a certain backup application shows poor bandwidth reduction. After disabling the backup application's native compression algorithm, the bandwidth reduction statistics on the Steelhead appliances suddenly improve significantly.

Which of the following are likely causes for the increased bandwidth reduction?

- A. The native compression algorithm of the backup application could not be compressed further
- B. The application-level protocol used by the backup application is not recognized by the Steelhead appliances
- C. The Steelhead appliances were not able to effectively perform TCP optimizations
- D. There should be no difference between compressed and uncompressed traffic

Answer: A

NEW QUESTION 316

Which of the following reflects the primary benefit of configuring CIFS prepopulation on a Steelhead appliance?

- A. Prelearning different CIFS dialects on the network
- B. Prewarming the datastore
- C. CIFS management reporting
- D. Management Streamlining

Answer: B

NEW QUESTION 317

What factors should you use when measuring resources to help you size your Steelhead appliances? (Select 3)

- A. Number of connections per second
- B. Average response time
- C. Maximum number of optimized connections
- D. Datastore capacity
- E. Maximum number of TCP connections
- F. WAN capacity

Answer:

CDF

NEW QUESTION 318

A Steelhead appliance can continue to optimize traffic in which of the following status states? (Select 2)

- A. Healthy
- B. Normal
- C. Critical
- D. Degraded
- E. Failed

Answer: AD

NEW QUESTION 323

Which of the following MAPI application-specific optimizations can be performed by Steelhead appliances?

- A. Read ahead on attachments
- B. Read ahead on large emails
- C. Write behind on attachments
- D. Write behind on large emails
- E. All of the above

Answer: E

NEW QUESTION 326

Data Streamlining is used by the Steelhead appliances and Steelhead Mobile for what?

- A. To speed up certain applications
- B. To reduce the number of connections used
- C. To reduce WAN utilization
- D. To make UDP faster

Answer: C

NEW QUESTION 328

The benefits provided by the CIFS application-level optimizations are:

- A. Remove protocol chattiness from the remote LAN
- B. Remove protocol chattiness from the data center LAN
- C. Increase protocol chattiness from the WAN
- D. Remove protocol chattiness from the WAN
- E. Encrypt important data

Answer: D

NEW QUESTION 330

Which of the following local accounts are available by default on a Steelhead appliance? (Select 2)

- A. admin
- B. riverbed
- C. monitor
- D. rvbd
- E. root

Answer: AC

NEW QUESTION 334

What is the default action of a Steelhead appliance when it enters admission control?

- A. Fail-to-wire
- B. Fail-to-block
- C. Passthrough all connections
- D. Passthrough new connections
- E. Drop new connections

Answer: D

NEW QUESTION 336

What does the RiOS acronym stand for?

- A. Riverbed interact Operations Shares
- B. Riverbed Optimization System
- C. Riverbed integrating Operating System
- D. Riverbed is Orange Shamrocks
- E. Riverbed is Outstandingly Simple
- F. Riverbed Internet Optimization System

- G. Riverbed Open Standards
- H. Riverbed Intranet Optimization System

Answer: B

Explanation: The Riverbed Optimization System (RiOS) is the software platform that powers SteelHead appliances from Riverbed.

References:

<http://www.wansolutionworks.com/RiOS.asp>

NEW QUESTION 338

When deploying a Steelhead appliance server-side out-of-path in the data center, what will be the source IP address seen by the destination server in the data center?

- A. The client PC's IP address
- B. The client-side Steelhead appliance's Primary IP address
- C. The client-side Steelhead appliance's In-path IP address
- D. The server-side Steelhead appliance's Primary IP address

Answer: D

NEW QUESTION 341

Which of the following QoS scheduling algorithms does Steelhead appliance use when QoS is enabled?

- A. Weighted Random Early Discard
- B. Weighted Fair Queuing
- C. Hierarchical Fair Service Curve
- D. Class Base Weighted Fair Queuing

Answer: C

NEW QUESTION 342

How many in-path rules will a WAN-initiated single connection execute on a Steelhead appliance?

- A. 1
- B. 2
- C. 3

Answer: A

NEW QUESTION 345

When enabling the IPSec feature on the Steelhead appliances:

- A. Both optimized and pass-through traffic are encrypted
- B. Only optimized traffic is encrypted
- C. IPSec encrypted traffic is optimized
- D. Only control traffic is encrypted, not user traffic

Answer: B

NEW QUESTION 346

Which of the following are considered to be root causes of poor application performance over wide area networks? (Select 3)

- A. Application protocol chattiness
- B. Transport protocol inefficiencies
- C. Proxy ARP
- D. Insufficient bandwidth
- E. Daylight Savings Time settings

Answer: ABD

NEW QUESTION 350

Which of the following factors are important to consider when sizing a Steelhead appliance? (Select 3)

- A. Number of simultaneous optimized connections
- B. The maximum optimized WAN bandwidth
- C. The size of datastore
- D. The number of applications used by the enterprise

Answer: ABC

NEW QUESTION 355

What combinations of WAN visibility modes can simultaneously be configured on Steelhead appliances?

- A. It can never be done

- B. Only Port Transparent
- C. Only Correct Addressing
- D. Only Full Addressing
- E. Full Transparency, Port Transparency and Correct Addressing can be configured simultaneously

Answer: E

NEW QUESTION 360

What optimization can be performed on HTTPS traffic when SSL optimization is enabled?

- A. SDR
- B. LZ
- C. Application Streamlining
- D. A and B only
- E. A, B, and C

Answer: E

NEW QUESTION 365

Which trunking protocols are supported by the Steelhead appliance?

- A. 802.1Q
- B. 802.1P
- C. 802.1AD
- D. Dynamic Etherchannel

Answer: A

NEW QUESTION 369

When MAPI prepopulation is enabled, what is default TCP keep-alive time used to prepopulate the Steelhead appliance with emails and attachments?

- A. 24 hours
- B. 48 hours
- C. 72 hours
- D. 96 hours

Answer: D

NEW QUESTION 374

Users at an optimized branch office log off and close down Microsoft Outlook when they leave for the day.

When they return in the morning the Steelhead appliance's datastore is already warm for emails they received throughout the night. What is this feature called?

- A. Transparent Proxy
- B. MAPI Prepopulation
- C. MAPI Offline Optimization
- D. Connection Pooling
- E. MAPI Tunneling

Answer: B

NEW QUESTION 379

How many in-path rules will a LAN-initiated single connection execute on a Steelhead appliance?

- A. 1
- B. 2
- C. 3

Answer: B

NEW QUESTION 380

A user uploads a Microsoft Word document to a server across the network using the file transfer protocol (FTP). The file has been seen before by the Steelhead appliances that are optimizing the link and so the user experiences warm performance. A second user at the same location downloads the file from the same server using the CIFS protocol. This file transfer can be considered:

- A. Cold, the data now travels in another direction so the Steelhead appliances need to relearn the data
- B. Cold, the application protocol is now different so the Steelhead appliances need to relearn the data
- C. Warm, the data has been seen by the Steelhead appliances before making the application protocol irrelevant
- D. Warm, only because the transfer uses CIFS
- E. Partially warm, the Steelhead appliances only need to learn the new data

Answer: C

NEW QUESTION 384

When deploying a Steelhead appliance server-side out-of-path in the data center, which configuration is necessary on the client-side Steelhead appliance in order for the design to function correctly?

- A. An auto-discover rule with the IP address of the server-side Steelhead appliance
- B. A fixed-target rule with the Primary IP address of the server-side Steelhead appliance
- C. A fixed-target rule with the IP address of the destination server
- D. No configuration is required

Answer: B

NEW QUESTION 385

When performing a logical in-path deployment, which interface needs to be physically cabled for optimization to occur?

- A. LAN
- B. AUX
- C. WAN
- D. Primary

Answer: C

NEW QUESTION 386

.....

Thank You for Trying Our Product

* 100% Pass or Money Back

All our products come with a 90-day Money Back Guarantee.

* One year free update

You can enjoy free update one year. 24x7 online support.

* Trusted by Millions

We currently serve more than 30,000,000 customers.

* Shop Securely

All transactions are protected by VeriSign!

100% Pass Your 101-01 Exam with Our Prep Materials Via below:

<https://www.certleader.com/101-01-dumps.html>