

## 1Z0-419 Dumps

# Oracle Application Development Framework 12c Essentials

<https://www.certleader.com/1Z0-419-dumps.html>



### NEW QUESTION 1

Which two statements describe the characteristics of an application module? (Choose two)

- A. It provides the database transaction for the queries that it encapsulates.
- B. It defines view object instances to implement an application use case.
- C. It defines entity object instances to implement an application use case.
- D. There is a one-to-one mapping between view objects and application modules.
- E. Each ADF application has only one application module.

**Answer:** AB

### NEW QUESTION 2

Which statement is true about the difference between an Action binding and a methodAction binding? (Choose the best answer.)

- A. None; they are used interchangeably.
- B. An Action binding is a binding to a method defined in the business service exposed through a data control, whereas a methodAction binding is used to bind to a UI component.
- C. Both are bindings to methods defined in a business service, but an Action binding is used to bind to a UI component whereas a methodAction binding is only a binding to a method.
- D. Both are bindings to methods defined in a business service, but a methodAction binding is used to bind to a UI control whereas an Action binding is only a binding to a method.
- E. Action bindings are used to bind to built-in operations such as Create, Delete and Next, whereas a methodAction binding is used to bind to custom methods.

**Answer:** E

### NEW QUESTION 3

You have written a validation expression for the employees entity object. Now would you customize the error message to show the value of the LastName attribute as all uppercase? (Choose the best answer.)

- A. Add a token to the validation error message and define the token value as LastName.toUpperCase().
- B. Add a token to the validation error message and define the token value as adf.object.hints.toUpperCase().
- C. Add a token to the validation error message and define the token value as adf.object.hints.value.toUpperCase().
- D. Manually change the error string in the ModelBundle.properties file to be uppercase.
- E. Insert adf.error.raise("< your error message>" + LastName.toUpperCase()) into the validation code as part of the failure processing.

**Answer:** E

### NEW QUESTION 4

View the Exhibit



Which three options are true about the scenario in the Exhibit? (Choose three)

- A. Two separate view object instances allow you, at run time, to maintain two separate current row indicators on each instance respectively, to display separate records at the same time.
- B. Two separate view object instances defined through the same application module create separate entity object caches, allowing users to modify records in their own independent transactions.
- C. Two separate view object instances exposed through the application module allow you to apply separate view criteria and bind variable values to show separate result sets.
- D. Under the relating AppModuleDataControl in the JDeveloper Data Controls window, each view object instance appears as a separate selectable data collection.
- E. ADF Faces restricts developers from using the same view object instance across pages, so developers at design time must create multiple separate view object instances.

**Answer:** ACD

### NEW QUESTION 5

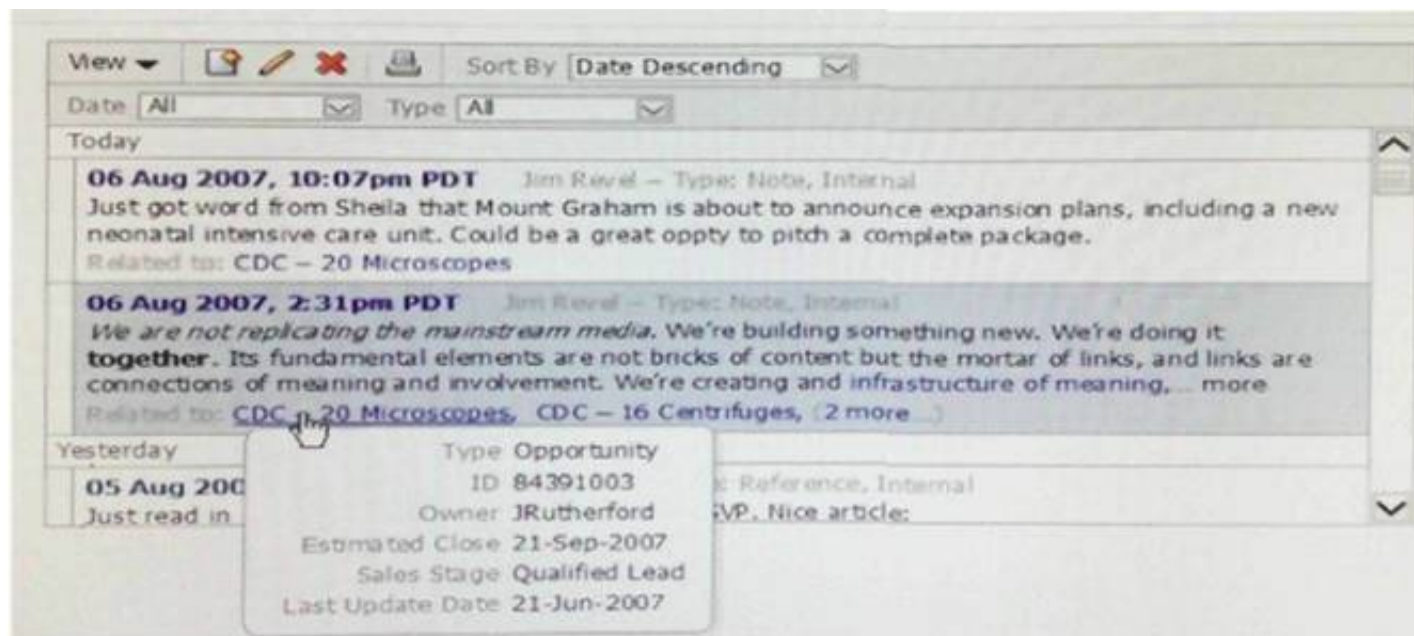
Which three objects can the "Create Business Components from Tables" wizard create? (Choose three.)

- A. query-based view objects based on database tables
- B. application module
- C. entity objects based on database tables
- D. entity object Java classes
- E. application module Java classes
- F. nested application modules

**Answer:** ABC

### NEW QUESTION 6

View the Exhibit



How would you implement functionality to display product details in a separate window when users place their cursors over a link in the table? (Choose the best answer.)

- A. Create detail components in an afpopup component. Add afshowPopupBehavior to the link within the table and set the PopupId to the ID of the pop-up.
- B. Create detail components in an afdialog component.
- C. Add afshowPopupBehavior to the link within the table and set the PopupId to the ID of the dialog.
- D. Create detail components in an afpopup component. Add afshowPopupBehavior to the link within the table and set the PopupId to the ID of the pop-up.
- E. Create detail components in an apanelForm component.
- F. Add af:showPopupBehavior to the link within the table and set the PopupId to the ID of the panel.
- G. Create detail components in an afdialog component.
- H. Add af:clientAttribute elements to the link within the table.
- I. Create afsetPropertyListener component.

**Answer: C**

#### NEW QUESTION 7

You need to execute a managed bean function immediately when af:selectBooleanCheckbox is selected by a user. Which listener property would you implement in the managed bean?

- A. valueChangeListener
- B. selectionListener
- C. actionListener
- D. queryListener
- E. phaseListener

**Answer: A**

#### NEW QUESTION 8

Your page contains the following code that is invoked on an action by the current user:

```
<af:setPropertyListener from("#{applicant:surname}" to("#{...}" type='action') />
```

To receive the value from the to property of the af:setPropertyListener, you create a managed bean as follows:

```
package view;

public class Employee { String lastName;

    public void setLastName(String lastName) { this.lastName = lastName; }
    public String getLastName() { return lastName; }
}
```

In the adfc-config.xml file, the managed bean is configured as follows:

```
<managed-bean>
  <managed-bean-name>emp</managed-bean-name>
  <managed-bean-class>view.Employee</managed-bean-class>
  <managed-bean-scope>pageFlowScope</managed-bean-scope>
</managed-bean>
```

What EL expression would you write in the af:setPropertyListener "to" property to write the value to the lastName string of the Employee class? (Choose the best answer.)

- A. to("#{lastName}")
- B. to("#{LastNamer
- C. to("#{pageFlowScope.emp.lastName):
- D. to("#{pageFlowScopeEmplastName}")
- E. to("#{emp.lastName})
- F. to("#{pageFlowScope emp LastName}")

**Answer: C**

#### NEW QUESTION 9

How are ADF components shared among applications? (Choose the best answer.)

- A. by using a source control system to share components
- B. by selecting the Shared Library check box when adding libraries and JARs to a project
- C. by creating shared application modules and ensuring all developers use them
- D. by defining a custom JAR file and sharing it in a source control system
- E. by creating an ADF Library of components and deploying it to a shared location

**Answer:** E

#### NEW QUESTION 10

Select three benefits that ADF Data Controls provide. (Choose three.)

- A. They abstract the UI developer from the technology used to implement business logic.
- B. They reduce the need to write managed beans.
- C. They automate Ajax updates to the UI.
- D. They enable drag-and-drop of data objects to UI component bindings.
- E. They directly connect your UI to the database tables.

**Answer:** ABD

#### NEW QUESTION 10

Which two statements are true about af:tree? (Choose two.)

- A. You can show only one outputText per node in a tree.
- B. To modify the data fields shown in a node of a tree created with ADF binding, you need to edit the tree bindings.
- C. You can specify a filter for a tree's node based on an attribute value at design time.
- D. Trees can display, at the most, a three-level-deep hierarchy.

**Answer:** AC

#### NEW QUESTION 14

Which option is not supported by an af:table component? (Choose the best answer)

- A. turning off filtering for specific columns
- B. grouping two columns under a single title
- C. expandable area for each row
- D. nested af:table for each row
- E. automatically switching a row to edit when the user clicks a row
- F. multiple row selection

**Answer:** C

#### NEW QUESTION 16

Select two true statements about JSF components. (Choose two.)

- A. They can generate only HTML markup.
- B. They can contain other JSF components.
- C. They can be manipulated from a managed bean.
- D. They always translate to a visual component on the user interface.

**Answer:** BC

#### NEW QUESTION 21

Which two components allow you to divide your page into two sections, where one section can be collapsed and expanded by the user, without the need to code?

- A. afpanelBorderLayout
- B. afpanelSplitter
- C. afstretchLayout
- D. afpanelDrawer
- E. afpanerTabbed

**Answer:** AB

#### NEW QUESTION 22

Which two statements are true about attribute value bindings? (Choose two.)

- A. Multiple UI components can reference the same attribute value binding.
- B. An attribute value binding can be created only by dragging and dropping a data control attribute onto a page.
- C. Each data control attribute can have only one attribute value binding.
- D. An ADF Faces inputText and an outputText component displaying the same attribute value would typically use separate bindings.
- E. Creating an attribute value binding by dragging and dropping from the Data Controls window references, by default, an attribute value in the current row in the collection.

**Answer:** CD

**NEW QUESTION 24**

Which three steps would you perform to enable security for an ADF application? (Choose three.)

- A. Define authentication and authorization by using the configure ADF Security wizard.
- B. Define which HTML pages must be secured.
- C. Grant roles access rights to bounded task flows.
- D. Grant roles access rights to unbounded task flows.
- E. Deploy the application to a Java EE Security-enabled server to test the user roles.
- F. Grant roles access rights to pagedefs for views in unbounded task flows.

**Answer:** ABC

**NEW QUESTION 26**

Identify three statements that are true about JSF. (Choose three.)

- A. Components are used to define page structure.
- B. Navigation between pages is defined outside of the JSF page in the metadata.
- C. Managed beans can have only one of two memory scopes.
- D. Managed beans can be accessed from more than one page.
- E. JSF does not support template creation for pages.

**Answer:** ABD

**NEW QUESTION 27**

For what purpose would you use the entity object attribute setting Change Indicator?(Choose the best answer.)

- A. to highlight the attribute in the UI with a border when the original attribute value has been changed
- B. to fire an entity object custom method as soon as the original attribute value has been changed
- C. to automatically lock the corresponding record in the database
- D. to automatically refresh the attribute value if the underlying data in the database is changed by another user
- E. to define an attribute that the framework uses to check whether the update is about to happen on underlying stale data in the database

**Answer:** C

**NEW QUESTION 30**

Which two are reasons why you might set the bind variables of a view object at run time programmatically rather than using the declarative features of the framework? (Choose two.)

- A. The framework can set only one bind variable declaratively on each view object quer
- B. Attempting to set more bind variables requires a programmatic solution.
- C. After a bind variable is set using the declarative method, its value is immutable unless updated programmatically.
- D. In all cases, ADF developers should code solutions rather than using declarative solutions
- E. The bind variable is derived by calling a Java method rather than receiving the value from a user.
- F. The bind variable value entered by and understandable by a user must be modified using Java code to a value that can actually be used in a query.

**Answer:** BD

**NEW QUESTION 34**

Which statement is true about the use of data controls in JSF? (Choose the best answer)

- A. Only Oracle ADF Business Components can be exposed as data controls.
- B. Dragging a data control onto a JSF page generates a Java class that acts as a managed bean
- C. An XXXpagedef xml file holds detailed information about a JSF page's use of data and operations exposed through ADF Data Controls
- D. Data controls eliminate the need to use expression language in your JSF code for binding the UI to data
- E. A Databindings cpx file holds names of managed beans that you map to UI elements

**Answer:** D

**NEW QUESTION 35**

Your database has a strict security requirement that whenever users select from any table in the database schema, they must append the select statement with an additional where predicate that returns only records WHERE owner = :pUserName. This restricts users to seeing only records that they own.

When you design and develop the ADF Business Components in your ADF application, there will be more than 100 view objects that select against this database.

You want to build a solution that not only ensures all your developers, when writing view objects, meet the database's strict security requirement, but takes the least amount of development effort for your entire team and is easy to maintain in the long term.

Identify the correct solution. (Choose the best answer.)

- A. Define a view criteria on each view object at design time to apply the predicate to the corresponding view object, ensuring the view criteria is defined against the view object instance in the Application Module Editor
- B. Override each view object's ViewObjectImpl class methods to programmatically modify each view object's where clause at run time to add the predicate to the select clause regardless of the query executed.
- C. Create a complete set of custom ADF Business Component framework classes for your business components and then override your custom ViewObjectImpl class to programmatically modify each view object's where clause at run time to append the predicate.
- D. in each view object, simply type the predicate into the WHERE clause of the View Object Editor query page.

**Answer:** C

**NEW QUESTION 40**

Which two statements are true after rolling back an application module? (Choose two.)

- A. The associated view object iterators for the application module have their current row indicators reset to the first row.
- B. All entity object caches for the associated view objects of the application module are emptied.C Any attribute changes to entity objects for the associated view objects of the application module are reset to their original values
- C. The application module is passivated.
- D. New or deleted records are unaffected by the rollback.

**Answer:** BC

#### NEW QUESTION 42

Which two statements are true about unbounded task flows? (Choose two.)

- A. They must have a defined entry point.
- B. They must have a defined exit point
- C. They may pass parameters to bounded task flows.
- D. They can use method calls but not routers to control navigation.
- E. Parameters cannot be passed to an unbounded task flow.

**Answer:** CD

#### NEW QUESTION 45

You have three application modules: A, B, and C. Application modules B and C are nested under the root application module A. Which statement is true when committing the nested application module B? (Choose the best answer.)

- A. No view objects are committed
- B. Only changes to view objects exposed through application module B are committed
- C. Only changes to view objects exposed through application modules A and B are committed
- D. All changes to all view objects exposed through all application modules A, B, and C are committed.

**Answer:** C

#### NEW QUESTION 48

You create a new ADF Faces page called emp.jsx and bind some data controls to that page. You notice a file called empPageDef.xml. What is this file for? (Choose best Answer)

- A. it is the page definition that contains the XML representation of the page layout and the components on that page.
- B. it is a template file into which you can write any managed bean code.
- C. it is the page template definition file that represents the chosen quick start layout.
- D. it is the file that contains the definition of the bindings to your data-bound components.
- E. it defines the binding context for all pages in your application.

**Answer:** D

#### NEW QUESTION 51

Consider a case where a view does not load with the expected data. Where would you set a breakpoint to debug the issue? (Choose the best answer.)

- A. the executable binding for the iterator on the pagedef for the view
- B. a router activity that is used to determine where to send the user after selecting a row in the view
- C. the partialTriggers property of the data bound component in the view
- D. the value binding for the iterator on the pagedef for the view

**Answer:** D

#### NEW QUESTION 54

During design time, you define two root application modules, each with a single view object. At run time, you have a single page exposing each view object as a separate table on the same page. Three users access the page at run time simultaneously  
Disregarding application module pooling, how many application module instances are instantiated to serve the three users at run time? (Choose the best answer.)

- A. 1
- B. 2
- C. 3
- D. 6

**Answer:**

#### NEW QUESTION 58

Which two statements are true about developing applications for different clients? (Choose two.)

- A. ADF can be used to build web applications for mobile devices that have browsers, such as tablets and smart phones.
- B. ADF Business Components need to be developed uniquely depending on the type of client accessing them.
- C. ADF can be used to build applications where Microsoft Excel is the UI client.
- D. it is necessary to develop completely different applications for mobile browsers, desktop browsers, and other clients.
- E. ADF can be used to deploy server-based web applications as native mobile device applications.

**Answer:** AC

#### NEW QUESTION 62

What is the purpose of applying a view criteria to a list accessor (that defines the data source of a list of values)? (Choose the best answer.)

- A. it allows the data in the list to be filtered based on the view criteria.
- B. Defining a view criteria allows you to specify different UI options for the list of values.
- C. it automatically gives end users a search panel from which they can filter the data in the list of values.
- D. it defines the order in which the data in the list appears.
- E. it automatically prevents excessively long lists of values by forcing the application of view criteria if the list of values has more than a defined number of rows returned

**Answer: A**

#### NEW QUESTION 64

To deploy an application, select the application drop-down and choose Deploy. In the resulting dialog box, select Deploy to EAR file to or Deploy to Application Server to . (Choose the best answer.)

- A. create a file to deploy to using WLST or Ant scripts; deploy an application to a managed server
- B. deploy an application to a predefined application server; deploy a JAR file to a
- C. predefined application server
- D. create a file to deploy to a clustered server; deploy an application to a third-party application server
- E. deploy to the Integrated WebLogic server; deploy to a clustered server
- F. create a file to deploy to a clustered server; deploy an application using Enterprise Manager

**Answer: A**

#### NEW QUESTION 67

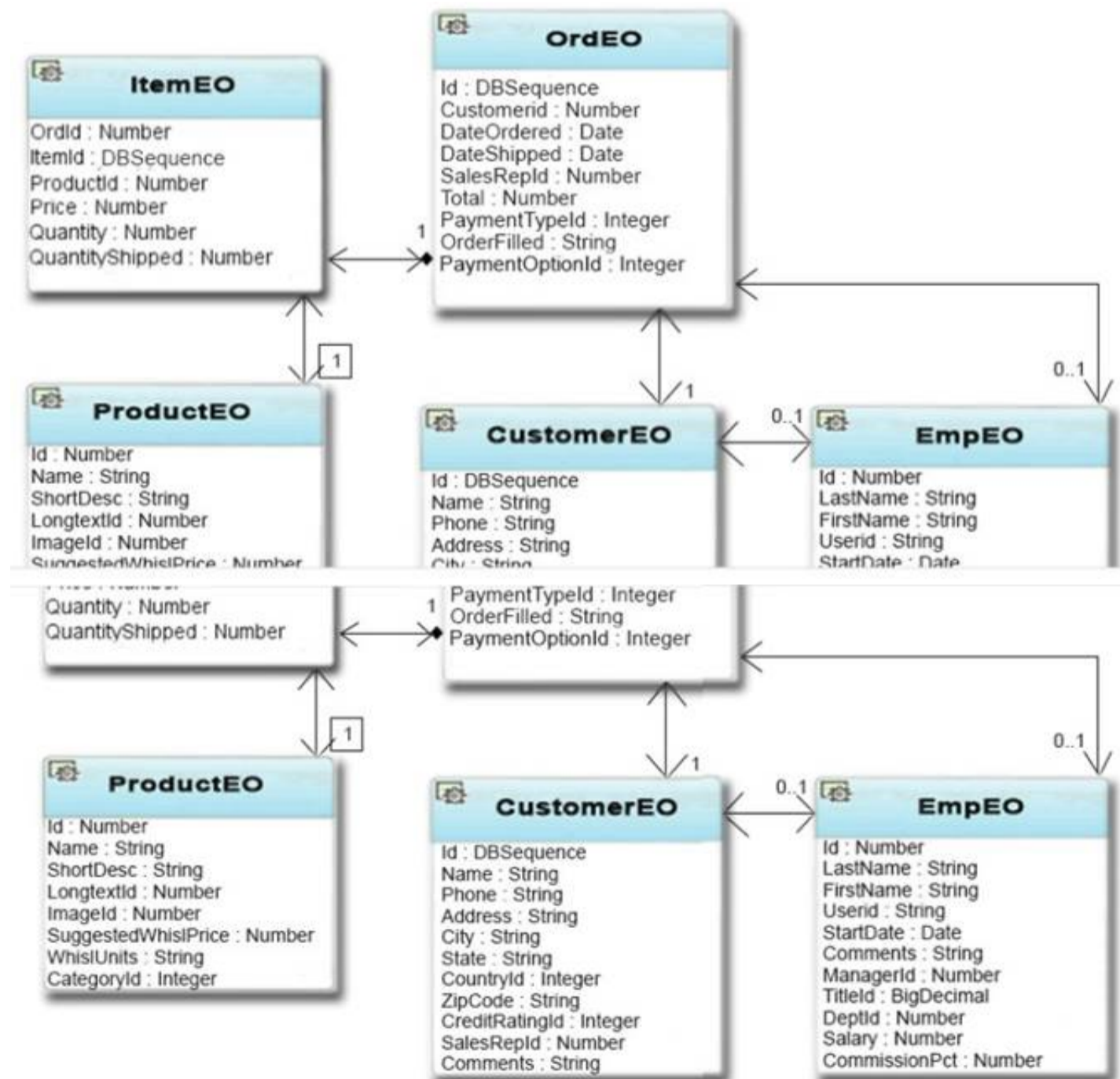
Which statement is true about the role of data controls in ADF? (Choose the best answer)

- A. They implement business service functions.
- B. They persist data from the database for display in the user interface
- C. They provide a consistent abstraction over the implementation details of a business service.
- D. They are a Java API that is called directly from each UI component to populate the component with data.
- E. They are the primary source of validation logic to control the behavior of your business service.

**Answer: C**

#### NEW QUESTION 72

View the Exhibit



A user interface requires a view of data for a customer order to include information about the order, items in the order, and information about the customer who placed the order. The application entities and their relationships are defined as shown in the Exhibit.

Which two steps would you perform to meet this requirement? (Choose two.)

- A. Create a default view object based on OrdEO, and add ItemEO and CustomerEO as reference entities to the view object
- B. Create default view objects based on OrdEO, ItemEO, and CustomerEO, and create view links based on the defined associations
- C. Create a view object based on SQL and define the SQL to select from the Ord, Item and Customer database tables
- D. Add attributes from the ItemEO and CustomerEO entities as needed
- E. Create calculated attributes as needed from the Orde
- F. Item, and Customer database tables.F Set the ItemEO and CustomerEO attributes to updatable=NEVER.

**Answer:** BD

#### NEW QUESTION 76

Consider a case where an application does not respond as predicted when a user submits data. Where would you set a breakpoint to debug the issue? (Choose the best answer)

- A. the value binding for the iterator on the pagedef for the view
- B. a view activity that is used to determine where to send the user
- C. the partialTriggers property of the data bound component in the view
- D. the Apply Request Values phase of the life cycle

**Answer:** A

#### NEW QUESTION 79

The current page includes the following entries in its page definition file:

```
<bmdings>
<attnbuteValuesfterBinding="EmployeesView1 Iterator" id="Email">
<AttrNames>
<ItemValue="Email"/>
</AttrNames>
</attnbuteValues>
</bindings>
```

Programmatically, in a managed bean, you need to read the current EmployeesView's email into a string. You write the following code to do this:

```
DCBindingContainer be = (DCBindingContamer)BindingContext.getCurrent ().getCurrentBindingsEntry();
XXXXXX emailBinding = <XXXXXX>bc.findCtrlBinding("Emair"); String emailValue = emailBinding.getAttribute().get$string();
```

What single class must you substitute for XXXXXX in the two locations in the code? (Choose the best answer.)

- A. CtrlBindmgContext
- B. JUCtrlActionBinding
- C. JUCtrlValueBmding
- D. DCValueBinding E BCValueBinding

**Answer:** C

#### NEW QUESTION 81

Which two statements describe the characteristics of a view object?

- A. it represents a row in the specified database table.
- B. it represents an association between two entity objects.
- C. it encapsulates a SQL query and simplifies working with data from a database.
- D. it allows data to be ordered based on an ORDER clause.
- E. it must include every attribute defined in an underlying entity object.

**Answer:** D

#### NEW QUESTION 86

Which two statements describe the characteristics of an entity object? (Choose two.)

- A. An entity object represents a cache for records retrieved from the database.
- B. An entity object includes an ORDER clause to allow you to order the data in it.
- C. An entity object includes a WHERE clause to allow you to shape the data in it.
- D. Every column in a database table must be represented as an entity object attribute.
- E. An entity object definition is described in XML.

**Answer:** AD

#### NEW QUESTION 88

Which three options are available in the ADF Controller that are not available in the generic JSF 2.0 controller layer? (Choose three.)

- A. pageflow scope: a memory scope for managed beans that is available for several pages (longer than a request scope and shorter than a sessionscope)
- B. ability to break the page flow of an application into multiple files
- C. subflows that can be included as regions inside a page
- D. method calls as part of the definition of a page flow
- E. defining managed beans that contain references to components on a page

**Answer:** ACE

#### NEW QUESTION 92

Consider a development organization divided into two teams, one developing ADF Business Components and related methods, and one developing the view and controller layers. What two steps would the Business Components team perform to deliver the results of their work to the other team'? (Choose two.)

- A. Share the root AppModuleImpl file on the file system or other shared location.
- B. Create an ADF Library JAR file for the model project
- C. Create a path to the ADF Library JAR file in Tools > Manage Libraries
- D. Add the ADF Library JAR to the ViewController project
- E. Share the ADF Library JAR file on the file system or other shared location

**Answer:** BD

#### NEW QUESTION 93

Which three statements are true about afpanelTabbed? (Choose three.)

- A. Tab position can be only top or bottom.
- B. Content inside a tab can stretch horizontally.
- C. You can use icons instead of text on tabs.
- D. You can have only one disclosed tab at a time.
- E. You cannot have an afpanelTabbed component inside one of the tabs.

**Answer:** BDE

#### NEW QUESTION 98

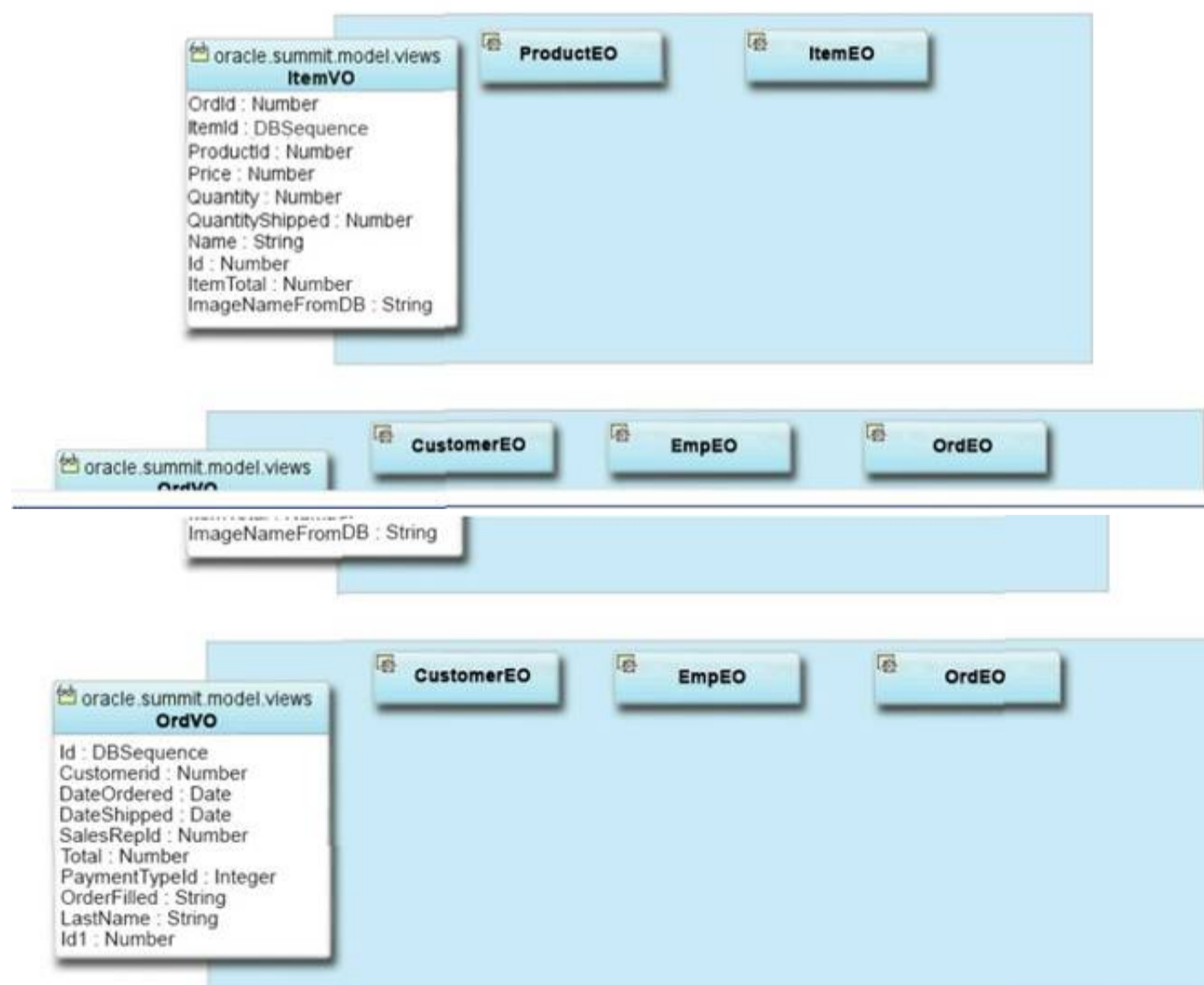
What should be in a managed bean, rather than a backing bean? (Choose the best answer.)

- A. code that manipulates the color of a text field on a JSF page
- B. data that is used to decide if a field is shown as mandatory or not
- C. data that is used on another page in the task flow
- D. code that opens a pop-up in the page

**Answer:** C

#### NEW QUESTION 101

View the Exhibit



Which option represents the steps to add a relationship between OrdVO and ItemVO and create a master-detail hierarchy for the same in the data model? (Choose the best answer.)

- A. Select View Link from the Components window and draw a line on the diagram from ItemVO to OrdV
- B. Use the Application Module Editor to define the data model for the hierarchy.
- C. Create a view link with OrdVO as the source and ItemVO as the destination and define the linked attributes Use the Application Module Editor to define the data model for the hierarchy.
- D. Create a view link with ItemVO as the source and OrdVO as the destination and define the linked attribute
- E. Use the Application Module Editor to nest the OrdVO instance beneath the ItemVO instance.
- F. Select Association from the Components window and draw a line on the diagram from OrdEO to ItemEO diagram and select Generate View Link

**Answer:** B

#### NEW QUESTION 106

What is the first step you perform to secure an ADF application? (Choose the best answer.)

- A. Edit the web.xml file and adf-config.xml file to include the ADF authentication servlet configuration.
- B. Merge the application roles into the deployment server's roles.
- C. Define a lifecycle listener to intercept the HTTP request for the application's URL
- D. Use the Configure ADF Security wizard to enable security for the application.
- E. Create a login page and run the application authenticated as the test-all user.

**Answer:** D

#### NEW QUESTION 108

Which three options does an entity object automatically implement? (Choose three.)

- A. primary key functionality based on any column in the database that is marked as a primary key
- B. not-null functionality based on any column in the database that is marked as not null
- C. attribute precision based on column size
- D. all table check constraints
- E. any table triggers

**Answer:** ABC

#### NEW QUESTION 110

You want to configure an application so that users can shop for products anonymously without authentication, and must then authenticate after they enter the checkout process. How would you enable this requirement? (Choose the best answer)

- A. Grant roles access rights to the task flow containing the checkout process
- B. Ensure the task flow containing the shopping process is unbounded
- C. Remove ADF Security for the application and replace it with Java EE Security for the task flow containing the checkout process
- D. Add a view containing a login form to the task flow containing the checkout process

**Answer:** D

#### NEW QUESTION 113

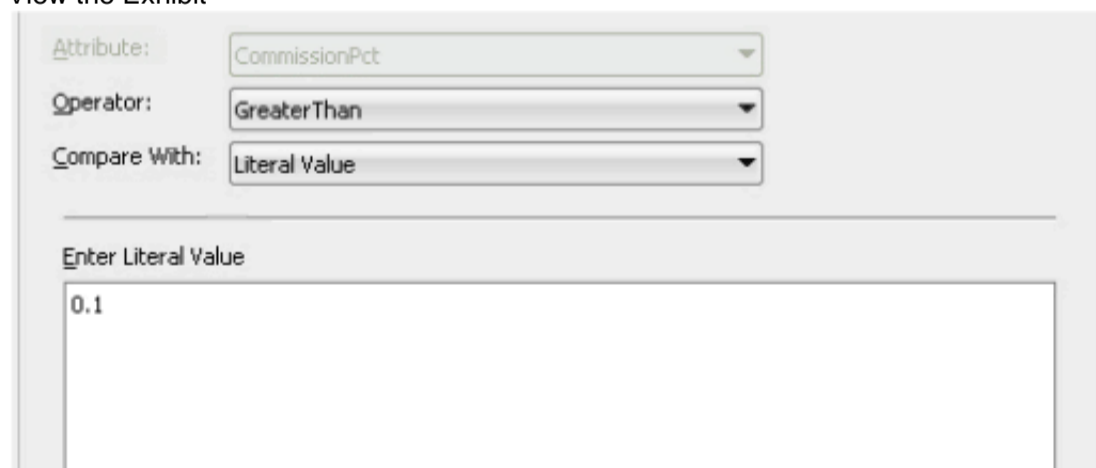
Which method must you override to ensure that messages are logged each time bind variable values are set in an application? (Choose the best answer.)

- A. bindParametersForCollection() method in any ViewObjectImpl that uses bind variables
- B. setBindVariables() method in any ViewObjectImpl that uses bind variables
- C. bindParametersForCollection() method in the super-class of ViewObjectImpl
- D. bindParametersForCollection() method in the super-class of ApplicationModuleImpl

**Answer:** C

#### NEW QUESTION 118

View the Exhibit



You have defined a compare validation rule on the CommissionPct attribute of the Employees entity object such that Commission must be greater than zero. How would you define that the validation rule applies only to those with the JobId "SA\_MAN" using the declarative features of ADF Business Components? (Choose the best answer.)

- A. Remove the current validator and, instead, write a method validator in Java and use an if statement to check the value of JobID.
- B. Remove the current validator and, instead, write a script validator using Groovy and use an if statement to check the value of JobID.
- C. Remove the current validator and, instead, write a regular expression validator to check the value of JobID
- D. The entity object has a Validation Execution tab and you use this to set a conditional execution expression JobId = "SA\_MAN".
- E. Change the literal value in the current validation rule to be if JobId = SA\_MAN then return 0.1 else return null.

**Answer:** B

#### NEW QUESTION 119

Which two statements are true about a dvt:gauge component? (Choose two.)

- A. dvtthresholdSet with dvtthreshold tags can be used to define ranges of data and coloring for a gauge

- B. The style of the dial in a dial gauge is fixed
- C. A gauge component can render as a vertical status meter.
- D. Gauge data range must start from 0.

**Answer:** AC

#### NEW QUESTION 120

When creating a bounded task flow that uses ADF Business Components, which two steps do you need to perform to enable the task flow to manage its own transaction"? (Choose two.)

- A. Define transaction properties at the task-flow level
- B. Include a phaseListener in a managed bean with methods for commit and rollback
- C. Add the application module commit and rollback operations as buttons or links on the last JSF page of the flow
- D. Define task flow return activities in the flow and associate "End transaction" attribute values with them

**Answer:** AD

#### NEW QUESTION 121

Consider the validation code in a Shipping entity object that is designed to ensure that the date ordered is <= the date shipped.

```
public boolean validateDateShippedAfterDateOrderedQ { Date DateShipped = getDateShipped();
Date DateOrdered = getDateOrdered();
if (DateShipped != null && DateShipped.compareTo(DateOrdered) < 0){ return false;
}
return true;
}
```

Which entity object validation rule should you integrate this with" (Choose the best answer)

- A. compare validator on the DateShipped attribute
- B. method validator on the DateShipped attribute
- C. compare validator on the DateOrdered attribute
- D. range validator on the Shipping entity object
- E. method validator on the Shipping entity object

**Answer:** C

#### NEW QUESTION 122

Which two statements are true about an af:panelStretchLayout component? (Choose two.)

- A. a component placed in the center facet dynamically spaces out vertically to fill out the page height.
- B. if the top facet has more content then fits vertically, it automatically adds a vertical scroll bar.
- C. Facets without content in them do not show up at run time.
- D. Components placed in the center facet stretch to fill the horizontal space regardless of their containing layout container.
- E. You cannot include another panelStretchLayout component in the bottom facet.
- F. You can specify the vertical size for the top facet in pixels.

**Answer:** AB

#### NEW QUESTION 123

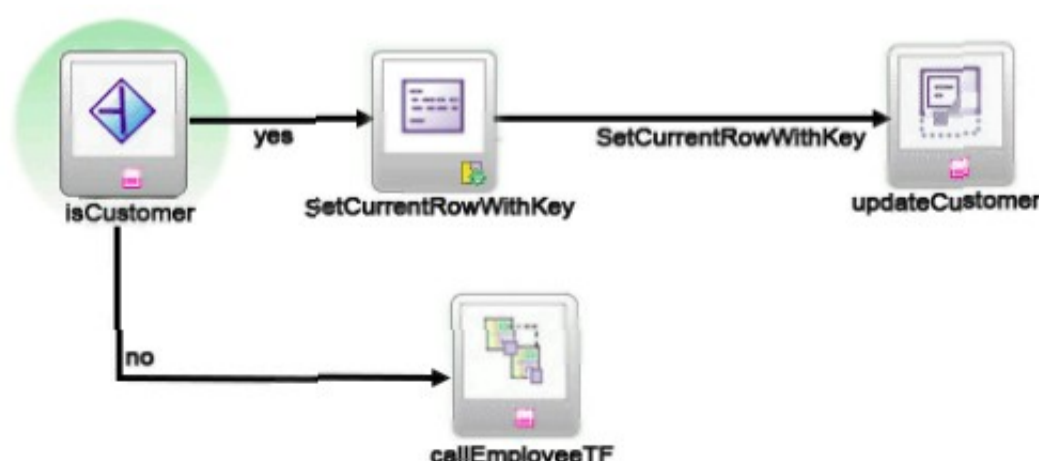
Which statement is true about an ADF Business Components list of values? (Choose the best answer.)

- A. it is always shown as a drop-down box in the user interface.
- B. it can be derived only from a non-updatable view object
- C. -
- D. it can show only one attribute in the selection list .
- E. it cannot have a blank item as an option.
- F. it can be represented as a radio group on an ADF Faces page

**Answer:** A

#### NEW QUESTION 124

View the Exhibit



What does the SetCurrentRowWithKey activity do for this task flow? (Choose the best answer.)

- A. calls a method

- B. calls the updateCustomer page
- C. determines whether the user is navigated to the updateCustomer or callEmployeeTF activity
- D. displays a pop-up that allows the user to enter a value for the current row

**Answer:** B

#### NEW QUESTION 126

Which three statements are true about using a dvt:map component on a page? (Choose three.)

- A. You need to define a connection to a server that provides map images.
- B. You can use an exact street address to show a point theme.
- C. There is no way to display the distance between two points on a map.
- D. You can modify the icon used to represent a point on a map.

**Answer:** A

#### NEW QUESTION 127

Your organization has specified that menu components should be located on the left-hand side of a page and that the main content should be displayed in the center. How do you ensure that developers adhere to this standard? (Choose the best answer.)

- A. Ask all developers to use the two-column quick start layout.
- B. Create a page template that defines the specified layout and distribute it to developers
- C. Create an ADF library that contains a collection of ADF Faces components that developers must use
- D. Create a task flow template that defines the specified layout; this will enforce the correct layout on all pages that are built from the template.

**Answer:** B

#### NEW QUESTION 132

Which two occur when a bounded task flow is created as a region on a page? (Choose two.)

- A. The transaction property of the task flow is set to "Use Existing Transaction if Possible."
- B. Any views defined as pages on the bounded task flow are changed to page fragments.
- C. An af:region tag is added to the page.
- D. The refresh property of the task flow binding is set to ifNeeded.
- E. a task flow binding is added to the page definition for the page.

**Answer:** CE

#### NEW QUESTION 137

Which three statements are true about declarative features of view objects? (Choose three.)

- A. You can use view object bind variables to parameterize a view object where clause with values supplied at run time.
- B. By default, a view object instance retrieves all database rows into the view object cache.
- C. To implement master-detail behavior between two view object instances, you define an association between those instances.
- D. a view accessor defines a validation expression that you apply to a view object attribute.
- E. A view object can include attributes whose values are based on SQL expressions rather than mapping directly to a database column
- F. A view object definition can include many view criteria but you can choose which view criteria to apply for each view object instance.

**Answer:** ACE

#### NEW QUESTION 139

You are prototyping an ADF application that uses ADF Business Components. However, the database schema that you can connect to does not contain any table. Which two declarative options are available to you to provide hard-coded data for the purposes of your prototype? (Choose two.)

- A. entity objects with default values
- B. placeholder data control
- C. static list view objects
- D. declarative managed beans

**Answer:** BC

#### NEW QUESTION 141

Consider the following code:

```
<af:inputText valueChangeListener="#{myBean.handleChange}" .../>
<af:commandButton actionListener="#{myBean.doAction}" action="#{
myBean.getDestination}" .../>
```

At run time, a user modifies the value in the af:inputText control, then presses af:commandButton

Assuming no errors are raised, which option represents the managed bean code invoked in the correct order? (Choose the best answer.)

- A. myBean.handleChange, myBean.doAction, myBean.getDestination
- B. myBean.doAction, myBean.handleChange, myBean.getDestination
- C. myBean.handleChange, myBean.doAction
- D. myBean.doAction, myBean.handleChange

**Answer:** C

**NEW QUESTION 144**

.....

## Thank You for Trying Our Product

\* 100% Pass or Money Back

All our products come with a 90-day Money Back Guarantee.

\* One year free update

You can enjoy free update one year. 24x7 online support.

\* Trusted by Millions

We currently serve more than 30,000,000 customers.

\* Shop Securely

All transactions are protected by VeriSign!

**100% Pass Your 1Z0-419 Exam with Our Prep Materials Via below:**

<https://www.certleader.com/1Z0-419-dumps.html>