

Exam Questions 156-915.80

Check Point Certified Security Expert Update - R80

<https://www.2passeasy.com/dumps/156-915.80/>



NEW QUESTION 1

The Correlation Unit performs all but which of the following actions:

- A. Marks logs that individually are not events, but may be part of a larger pattern to be identified later
- B. Generates an event based on the Event policy
- C. Assigns a severity level to the event
- D. Takes a new log entry that is part of a group of items that together make up an event, and adds it to an ongoing event

Answer: C

NEW QUESTION 2

Which is the correct order of a log flow processed by SmartEvents components:

- A. Firewall > Correlation Unit > Log Server > SmartEvent Server Database > SmartEvent Client
- B. Firewall > SmartEvent Server Database > Correlation unit > Log Server > SmartEvent Client
- C. Firewall > Log Server > SmartEvent Server Database > Correlation Unit > SmartEvent Client
- D. Firewall > Log Server > Correlation Unit > SmartEvent Server Database > SmartEvent Client

Answer: D

NEW QUESTION 3

Where do you create and modify the Mobile Access policy in R80?

- A. SmartConsole
- B. SmartMonitor
- C. SmartEndpoint
- D. SmartDashboard

Answer: A

NEW QUESTION 4

What can you do to see the current number of kernel instances in a system with CoreXL enabled?

- A. Browse to Secure Platform Web GUI
- B. Only Check Point support personnel can access that information
- C. Execute SmarDashboard client
- D. Execute command cpconfig

Answer: D

NEW QUESTION 5

Check Point recommends configuring Disk Space Management parameters to delete old log entities when available disk space is less than or equal to?

- A. 50%
- B. 75%
- C. 80%
- D. 15%

Answer: D

NEW QUESTION 6

What scenario indicates that SecureXL is enabled?

- A. Dynamic objects are available in the Object Explorer
- B. SecureXL can be disabled in cpconfig
- C. fwaccel commands can be used in clish
- D. Only one packet in a stream is seen in a fw monitor packet capture

Answer: C

NEW QUESTION 7

Why would you not see a CoreXL configuration option in cpconfig?

- A. The gateway only has one processor
- B. CoreXL is not licenses
- C. CoreXL is disabled via policy
- D. CoreXL is not enabled in the gateway object

Answer: A

NEW QUESTION 8

Which of the following is NOT a valid way to view interface's IP address settings in Gaia?

- A. Using the command sthtool in Expert Mode
- B. Viewing the file / config/ active
- C. Via the Gaia WebUI
- D. Via the command show configuration in CLISH

Answer: A

NEW QUESTION 9

The Event List within the Events tab contains:

- A. a list of options available for running a query.
- B. the top events, destinations, sources, and users of the query results, either as a chart or in a tallied list.
- C. events generated by a query.
- D. the details of a selected event.

Answer: C

Explanation: These are the components of the Events tab:

Item Description 1

Query Tree - Double-click a query to run the query. The results show in the event List. 2

Event Statistics pane - Shows the top events, destinations, sources and users of the query results, either as a chart or in a tallied list.3

Event List - Shows events generated by a query. 4

Event Preview Pane - Shows the details of the selected event References:

NEW QUESTION 10

The CDT utility supports which of the following?

- A. Major version upgrades to R77.30
- B. Only Jumbo HFA's and hotfixes
- C. Only major version upgrades to R80.10
- D. All upgrades

Answer: D

Explanation: The Central Deployment Tool (CDT) is a utility that runs on an R77 / R77.X / R80 / R80.10 Security Management Server / Multi-Domain Security Management Server (running Gaia OS).

It allows the administrator to automatically install CPUSE Offline packages (Hotfixes, Jumbo Hotfix Accumulators (Bundles), Upgrade to a Minor Version, Upgrade to a Major Version) on multiple managed Security Gateways and Cluster Members at the same time.

References:

NEW QUESTION 10

In R80.10, how do you manage your Mobile Access Policy?

- A. Through the Unified Policy
- B. Through the Mobile Console
- C. From SmartDashboard
- D. From the Dedicated Mobility Tab

Answer: C

NEW QUESTION 13

What is the SandBlast Agent designed to do?

- A. Performs OS-level sandboxing for SandBlast Cloud architecture
- B. Ensure the Check Point SandBlast services is running on the end user's system
- C. If malware enters an end user's system, the SandBlast Agent prevents the malware from spreading with the network
- D. Clean up email sent with malicious attachments.

Answer: C

NEW QUESTION 14

Fill in the blank: The tool generates a R80 Security Gateway configuration report.

- A. infoCP
- B. infoview
- C. cpinfo
- D. fw cpinfo

Answer: C

NEW QUESTION 19

What is the purpose of a SmartEvent Correlation Unit?

- A. The SmartEvent Correlation Unit is designed to check the connection reliability from SmartConsole to the SmartEvent Server

- B. The SmartEvent Correlation Unit's task it to assign severity levels to the identified events.
- C. The Correlation unit role is to evaluate logs from the log server component to identify patterns/threats and convert them to events.
- D. The SmartEvent Correlation Unit is designed to check the availability of the SmartReporter Server

Answer: C

NEW QUESTION 23

What is a feature that enables VPN connections to successfully maintain a private and secure VPN session without employing Stateful Inspection?

- A. Stateful Mode
- B. VPN Routing Mode
- C. Wire Mode
- D. Stateless Mode

Answer: C

Explanation: Wire Mode is a VPN-1 NGX feature that enables VPN connections to successfully fail over, bypassing Security Gateway enforcement. This improves performance and reduces downtime. Based on a trusted source and destination, Wire Mode uses internal interfaces and VPN Communities to maintain a private and secure VPN session, without employing Stateful Inspection. Since Stateful Inspection no longer takes place, dynamic-routing protocols that do not survive state verification in non-Wire Mode configurations can now be deployed. The VPN connection is no different from any other connections along a dedicated wire, thus the meaning of "Wire Mode".

NEW QUESTION 24

Aaron is a Cyber Security Engineer working for Global Law Firm with large scale deployment of Check Point Enterprise Appliances using GAiA/R80.10. Company's Network Security Developer Team is having issue testing new API with newly deployed R80.10 Security Management Server and blames Check Point Security Management Server as root cause. The ticket has been created and issue is at Aaron's desk for an investigation. What do you recommend as the best suggestion for Aaron to make sure API testing works as expected?

- A. Aaron should check API Server status from expert CLI by "fwm api status" and if it's stopped he should start using command "fwm api start" on Security Management Server.
- B. Aaron should check API Server5 status from expert CLI by "cpapi status" and if it's stopped he should start using command "cpapi start" on Security Management Server.
- C. Aaron should check API Server status from expert CLI by "api status" and if it's stopped he should start using command "api start" on Security Management Server.
- D. Aaron should check API Server status from expert CLI by "cpm api status" and if it's stopped he should start using command "cpm api start" on Security Management Server.

Answer: C

NEW QUESTION 27

Sticky Decision Function (SDF) is required to prevent which of the following? Assume you set up an Active-Active cluster.

- A. Symmetric routing
- B. Failovers
- C. Asymmetric routing
- D. Anti-Spoofing

Answer: C

NEW QUESTION 30

What GUI client would you use to view an IPS packet capture?

- A. SmartView Monitor
- B. SmartView Tracker
- C. Smart Update
- D. Smart Reporter

Answer: B

NEW QUESTION 33

What are types of Check Point APIs available currently as part of R80.10 code?

- A. Security Gateway API, Management API, Threat Prevention API and Identity Awareness Web Services API
- B. Management API, Threat Prevention API, Identity Awareness Web Services API and OPSEC SDK API
- C. OSE API, OPSEC SDK API, Threat Extraction API and Policy Editor API
- D. CPMI API, Management API, Threat Prevention API and Identity Awareness Web Services API

Answer: B

NEW QUESTION 36

When doing a Stand-Alone Installation, you would install the Security Management Server with which other Check Point architecture component?

- A. None, Security Management Server would be installed by itself
- B. SmartConsole
- C. SecureClient
- D. SmartEvent

Answer: D

NEW QUESTION 41

John detected high load on sync interface. Which is most recommended solution?

- A. For short connections like http service – delay sync for 2 seconds
- B. Add a second interface to handle sync traffic
- C. For short connections like http service – do not sync
- D. For short connections like icmp service – delay sync for 2 seconds

Answer: A

NEW QUESTION 42

Which statement is true regarding redundancy?

- A. System Administrator know when their cluster has failed over and can also see why it failed over by using the cphaprob f it command.
- B. ClusterXL offers three different Load Sharing solutions: Unicast, Broadcast, and Multicast.
- C. Machines in a Cluster XL High Availability configuration must be synchronized.
- D. Both Cluster XL and VRRP are fully supported by Gaia and available to all Check Point appliances, open servers, and virtualized environments.

Answer: D

NEW QUESTION 43

What is the command to show SecureXL status?

- A. fwaccel status
- B. fwaccel stats –m
- C. fwaccel –s
- D. fwaccel stat

Answer: D

Explanation: To check overall SecureXL status: [Expert@HostName]# fwaccel stat

NEW QUESTION 47

SmartEvent does NOT use which of the following procedures to identify events?

- A. Matching a log against each event definition
- B. Create an event candidate
- C. Matching a log against local exclusions
- D. Matching a log against global exclusions

Answer: C

Explanation: Events are detected by the SmartEvent Correlation Unit. The Correlation Unit task is to scan logs for criteria that match an Event Definition. SmartEvent uses these procedures to identify events:

NEW QUESTION 51

What command would show the API server status?

- A. cpm status
- B. api restart
- C. api status
- D. show api status

Answer: C

NEW QUESTION 52

In SPLAT the command to set the timeout was idle. In order to achieve this and increase the timeout for Gaia, what command do you use?

- A. set idle <value>
- B. set inactivity–timeout <value>
- C. set timeout <value>
- D. set inactivity <value>

Answer: B

NEW QUESTION 55

What is the purpose of Priority Delta in VRRP?

- A. When a box is up, Effective Priority = Priority + Priority Delta
- B. When an Interface is up, Effective Priority = Priority + Priority Delta
- C. When an Interface fail, Effective Priority = Priority – Priority Delta

D. When a box fail, Effective Priority = Priority – Priority Delta

Answer: C

Explanation: Each instance of VRRP running on a supported interface may monitor the link state of other interfaces. The monitored interfaces do not have to be running VRRP. If a monitored interface loses its link state, then VRRP will decrement its priority over a VRID by the specified delta value and then will send out a new VRRP HELLO packet. If the new effective priority is less than the priority a backup platform has, then the backup platform will begin to send out its own HELLO packet. Once the master sees this packet with a priority greater than its own, then it releases the VIP.

NEW QUESTION 56

Which features are only supported with R80.10 Gateways but not R77.x?

- A. Access Control policy unifies the Firewall, Application Control & URL Filtering, Data Awareness, and Mobile Access Software Blade policies.
- B. Limits the upload and download throughput for streaming media in the company to 1 Gbps.
- C. The rule base can be built of layers, each containing a set of the security rule
- D. Layers are inspected in the order in which they are defined, allowing control over the rule base flow and which security functionalities take precedence.
- E. Time object to a rule to make the rule active only during specified times.

Answer: C

NEW QUESTION 59

Which of the following statements is TRUE about R80 management plug-ins?

- A. The plug-in is a package installed on the Security Gateway.
- B. Installing a management plug-in requires a Snapshot, just like any upgrade process.
- C. A management plug-in interacts with a Security Management Server to provide new features and support for new products.
- D. Using a plug-in offers full central management only if special licensing is applied to specific features of the plug-in.

Answer: C

NEW QUESTION 60

Which one of these is NOT a firewall chain?

- A. RTM packet in (rtm)
- B. VPN node add (vpnad)
- C. IP Options restore (in) (ipopt_res)
- D. Fw SCV inbound (scv)

Answer: B

NEW QUESTION 65

What CLI command will reset the IPS pattern matcher statistics?

- A. ips reset pmstat
- B. ips pstats reset
- C. ips pmstats refresh
- D. ips pmstats reset

Answer: D

Explanation: ips pmstats reset

Description - Resets the data that is collected to calculate the pmstat statistics. Usage - ips pmstats reset

NEW QUESTION 66

Fill in the blank: The R80 feature permits blocking specific IP addresses for a specified time period.

- A. Block Port Overflow
- B. Local Interface Spoofing
- C. Suspicious Activity Monitoring
- D. Adaptive Threat Prevention

Answer: C

NEW QUESTION 71

Which of the following is NOT an internal/native Check Point command?

- A. fwaccel on
- B. fw ct1 debug
- C. tcpdump
- D. cphaprob

Answer: C

NEW QUESTION 73

Firewall policies must be configured to accept VRRP packets on the GAIa platform if it runs Firewall software. The Multicast destination assigned by the Internet Assigned Numbers Authority (IANA) for VRRP is:

- A. 224.0.0.18
- B. 224.0.0.5
- C. 224.0.0.102
- D. 224.0.0.22

Answer: A

Explanation: Topic 2, Exam Pool A

NEW QUESTION 77

You are running a R80 Security Gateway on GAIa. In case of a hardware failure, you have a server with the exact same hardware and firewall version installed. What back up method could be used to quickly put the secondary firewall into production?

- A. manual backup
- B. upgrade_export
- C. backup
- D. snapshot

Answer: D

NEW QUESTION 81

You have created a Rule Base for firewall, websydney. Now you are going to create a new policy package with security and address translation rules for a second Gateway.

NO.	ORIGINAL PACKET			TRANSLATED PACKET			INSTALL ON
	SOURCE	DESTINATION	SERVICE	SOURCE	DESTINATION	SERVICE	
1	websydney	* Any	* Any	websydney (Hid	Original	Original	fwsydney
2	net_singapore	net_singapore	* Any	Original	Original	Original	All
3	net_singapore	* Any	* Any	net_singapore (h	Original	Original	All
4	* Any	websydney	* Any	Original	websydney	Original	Policy Targets
5	* Any	websignapore	TCP HTTP_and_HTTP!	Original	Original	TCP http	Policy Targets

What is TRUE about the new package's NAT rules?

- A. Rules 1, 2, 3 will appear in the new package.
- B. Only rule 1 will appear in the new package.
- C. NAT rules will be empty in the new package.
- D. Rules 4 and 5 will appear in the new package.

Answer: A

NEW QUESTION 84

You just installed a new Web server in the DMZ that must be reachable from the Internet. You create a manual Static NAT rule as follows:

Source: Any || Destination: web_public_IP || Service: Any || Translated Source: original || Translated Destination: web_private_IP || Service: Original

“web_public_IP” is the node object that represents the new Web server's public IP address. “web_private_IP” is the node object that represents the new Web site's private IP address. You enable all settings from Global Properties > NAT.

When you try to browse the Web server from the Internet you see the error “page cannot be displayed”. Which of the following is NOT a possible reason?

- A. There is no Security Policy defined that allows HTTP traffic to the protected Web server.
- B. There is no ARP table entry for the protected Web server's public IP address.
- C. There is no route defined on the Security Gateway for the public IP address to the Web server's privateIP address.
- D. There is no NAT rule translating the source IP address of packets coming from the protected Web server.

Answer: D

NEW QUESTION 87

Users with Identity Awareness Agent installed on their machines login with , so that when the user logs into the domain, that information is also used to meet Identity Awareness credential requests.

- A. Key-logging
- B. ICA Certificates
- C. SecureClient
- D. Single Sign-On

Answer: D

NEW QUESTION 89

Access Role objects define users, machines, and network locations as:

- A. Credentialed objects
- B. Linked objects
- C. One object
- D. Separate objects

Answer: C

NEW QUESTION 93

You enable Automatic Static NAT on an internal host node object with a private IP address of 10.10.10.5, which is NATed into 216.216.216.5. (You use the default settings in Global Properties / NAT.)

When you run fw monitor on the R80 Security Gateway and then start a new HTTP connection from host

10.10.10.5 to browse the Internet, at what point in the monitor output will you observe the HTTP SYN-ACK packet translated from 216.216.216.5 back into 10.10.10.5?

- A. o=outbound kernel, before the virtual machine
- B. I=inbound kernel, after the virtual machine
- C. O=outbound kernel, after the virtual machine
- D. i=inbound kernel, before the virtual machine

Answer: B

NEW QUESTION 94

Where do you verify that UserDirectory is enabled?

- A. Verify that Security Gateway > General Properties > Authentication > Use UserDirectory (LDAP) for Security Gateways is checked
- B. Verify that Global Properties > Authentication > Use UserDirectory (LDAP) for Security Gateways is checked
- C. Verify that Security Gateway > General Properties > UserDirectory (LDAP) > Use UserDirectory (LDAP) for Security Gateways is checked
- D. Verify that Global Properties > UserDirectory (LDAP) > Use UserDirectory (LDAP) for Security Gateways is checked

Answer: D

NEW QUESTION 97

Where can you find the Check Point's SNMP MIB file?

- A. \$CPDIR/lib/snmp/chkpt.mib
- B. \$FWDIR/conf/snmp.mib
- C. It is obtained only by request from the TAC.
- D. There is no specific MIB file for Check Point products.

Answer: A

NEW QUESTION 101

You are the Security Administrator for ABC-Corp. A Check Point Firewall is installed and in use on GAiA. You are concerned that the system might not be retaining your entries for the interfaces and routing configuration. You would like to verify your entries in the corresponding file(s) on GAiA. Where can you view them? Give the BEST answer.

- A. /etc/sysconfig/netconf.C
- B. /etc/conf/route.C
- C. /etc/sysconfig/network-scripts/ifcfg-ethx
- D. /etc/sysconfig/network

Answer: A

NEW QUESTION 104

The technical-support department has a requirement to access an intranet server. When configuring a User Authentication rule to achieve this, which of the following should you remember?

- A. You can only use the rule for Telnet, FTP, SMTP, and rlogin services.
- B. The Security Gateway first checks if there is any rule that does not require authentication for this type of connection before invoking the Authentication Security Server.
- C. Once a user is first authenticated, the user will not be prompted for authentication again until logging out.
- D. You can limit the authentication attempts in the User Properties' Authentication tab.

Answer: B

NEW QUESTION 107

What is the officially accepted diagnostic tool for IP Appliance Support?

- A. ipsoinfo
- B. CST
- C. uag-diag
- D. cpinfo

Answer: B

NEW QUESTION 108

Complete this statement from the options provided. Using Captive Portal, unidentified users may be either; blocked, allowed to enter required credentials, or required to download the .

- A. Identity Awareness Agent
- B. Full Endpoint Client
- C. ICA Certificate
- D. SecureClient

Answer: A

NEW QUESTION 109

How do you recover communications between your Security Management Server and Security Gateway if you lock yourself out through a rule or policy mis-configuration?

- A. fw unload policy
- B. fw unloadlocal
- C. fw delete all.all@localhost
- D. fwm unloadlocal

Answer: B

NEW QUESTION 110

Which of the following allows administrators to allow or deny traffic to or from a specific network based on the user's credentials?

- A. Access Policy
- B. Access Role
- C. Access Rule
- D. Access Certificate

Answer: B

NEW QUESTION 113

The third-shift Administrator was updating Security Management Server access settings in Global Properties. He managed to lock all administrators out of their accounts. How should you unlock these accounts?

- A. Delete the file admin.lock in the Security Management Server directory \$FWDIR/tmp/.
- B. Reinstall the Security Management Server and restore using upgrade_import.
- C. Type fwm lock_admin -ua from the Security Management Server command line.
- D. Login to SmartDashboard as the special cpconfig_admin user account; right-click on each administrator object and select unlock.

Answer: C

NEW QUESTION 115

You cannot use SmartDashboard's User Directory features to connect to the LDAP server. What should you investigate?

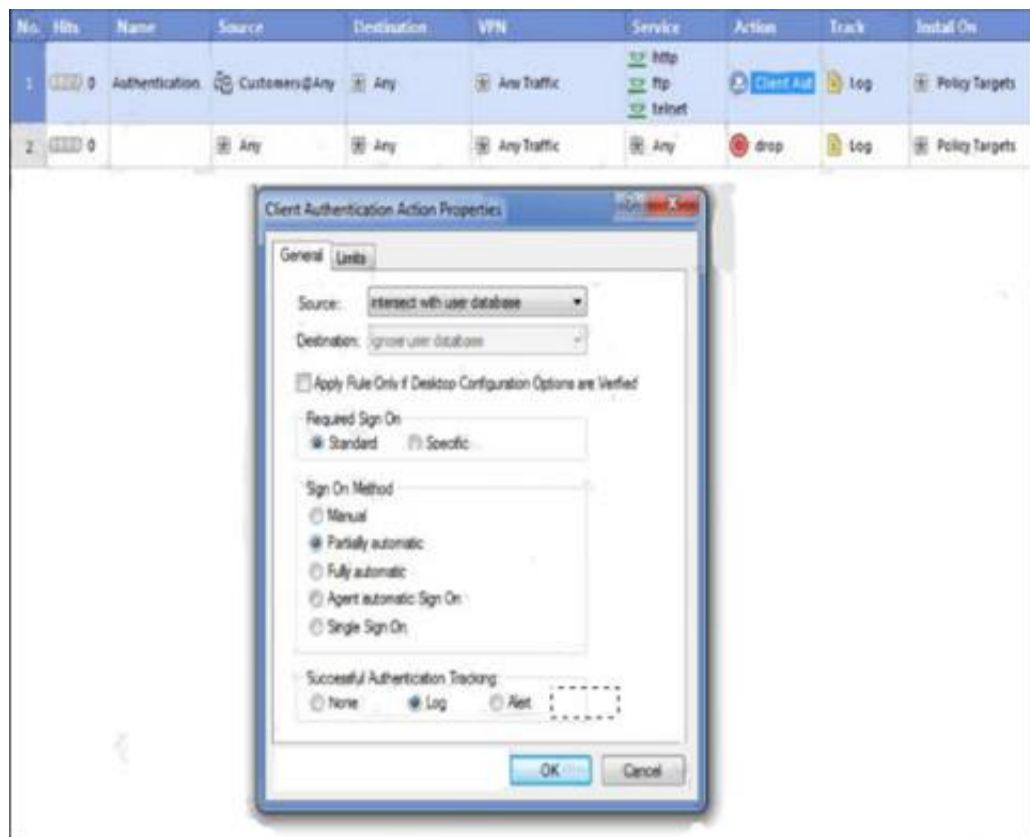
- 1) Verify you have read-only permissions as administrator for the operating system.
- 2) Verify there are no restrictions blocking SmartDashboard's User Manager from connecting to the LDAP server.
- 3) Check that the login Distinguished Name configured has root permission (or at least write permission Administrative access) in the LDAP Server's access control configuration.

- A. 1, 2, and 3
- B. 2 and 3
- C. 1 and 2
- D. 1 and 3

Answer: B

NEW QUESTION 118

Study the Rule base and Client Authentication Action properties screen -



After being authenticated by the Security Gateway, when a user starts an HTTP connection to a Web site, the user tries to FTP to another site using the command line. What happens to the user? The:

- A. user is prompted for authentication by the Security Gateway again.
- B. FTP data connection is dropped after the user is authenticated successfully.
- C. user is prompted to authenticate from that FTP site only, and does not need to enter his username and password for Client Authentication.
- D. FTP connection is dropped by Rule 2.

Answer: C

NEW QUESTION 122

Before upgrading SecurePlatform to GAIa, you should create a backup. To save time, many administrators use the command backup. This creates a backup of the Check Point configuration as well as the system configuration.

An administrator has installed the latest HFA on the system for fixing traffic problem after creating a backup file. There is a mistake in the very complex static routing configuration. The Check Point configuration has not been changed. Can the administrator use a restore to fix the errors in static routing?

- A. The restore is not possible because the backup file does not have the same build number (version).
- B. The restore is done by selecting Snapshot Management from the boot menu of GAIa.
- C. The restore can be done easily by the command restore and copying netconf.C from the production environment.
- D. A backup cannot be restored, because the binary files are missing.

Answer: C

NEW QUESTION 124

Select the correct statement about Secure Internal Communications (SIC) Certificates. SIC Certificates:

- A. Are used for securing internal network communications between the SmartDashboard and the Security Management Server.
- B. For R75 Security Gateways are created during the Security Management Server installation.
- C. Decrease network security by securing administrative communication among the Security Management Servers and the Security Gateway.
- D. Uniquely identify Check Point enabled machines; they have the same function as VPN Certificates.

Answer: D

NEW QUESTION 126

Which Check Point address translation method is necessary if you want to connect from a host on the Internet via HTTP to a server with a reserved (RFC 1918) IP address on your DMZ?

- A. Dynamic Source Address Translation
- B. Hide Address Translation
- C. Port Address Translation
- D. Static Destination Address Translation

Answer: D

NEW QUESTION 130

You intend to upgrade a Check Point Gateway from R71 to R80. Prior to upgrading, you want to back up the Gateway should there be any problems with the upgrade. Which of the following allows for the Gateway configuration to be completely backed up into a manageable size in the least amount of time?

- A. database revision
- B. snapshot
- C. upgrade_export
- D. backup

Answer: D

NEW QUESTION 135

A host on the Internet initiates traffic to the Static NAT IP of your Web server behind the Security Gateway. With the default settings in place for NAT, the initiating packet will translate the .

- A. destination on server side
- B. source on server side
- C. source on client side
- D. destination on client side

Answer: D

NEW QUESTION 137

You enable Hide NAT on the network object, 10.1.1.0 behind the Security Gateway's external interface. You browse to the Google Website from host, 10.1.1.10 successfully. You enable a log on the rule that allows 10.1.1.1 to exit the network. How many log entries do you see for that connection in SmartView Tracker?

- A. Two, one for outbound, one for inbound
- B. Only one, outbound
- C. Two, both outbound, one for the real IP connection and one for the NAT IP connection
- D. Only one, inbound

Answer: B

NEW QUESTION 138

Which of the following is a CLI command for Security Gateway R80?

- A. fw tab -u
- B. fw shutdown
- C. fw merge
- D. fwm policy_print <polycname>

Answer: A

NEW QUESTION 140

The Identity Agent is a lightweight endpoint agent that authenticates securely with Single Sign-On (SSO). What is not a recommended usage of this method?

- A. When accuracy in detecting identity is crucial
- B. Leveraging identity for Data Center protection
- C. Protecting highly sensitive servers
- D. Identity based enforcement for non-AD users (non-Windows and guest users)

Answer: D

NEW QUESTION 145

Which of the following options is available with the GAIa cpconfig utility on a Management Server?

- A. Export setup
- B. DHCP Server configuration
- C. GUI Clients
- D. Time & Date

Answer: C

NEW QUESTION 148

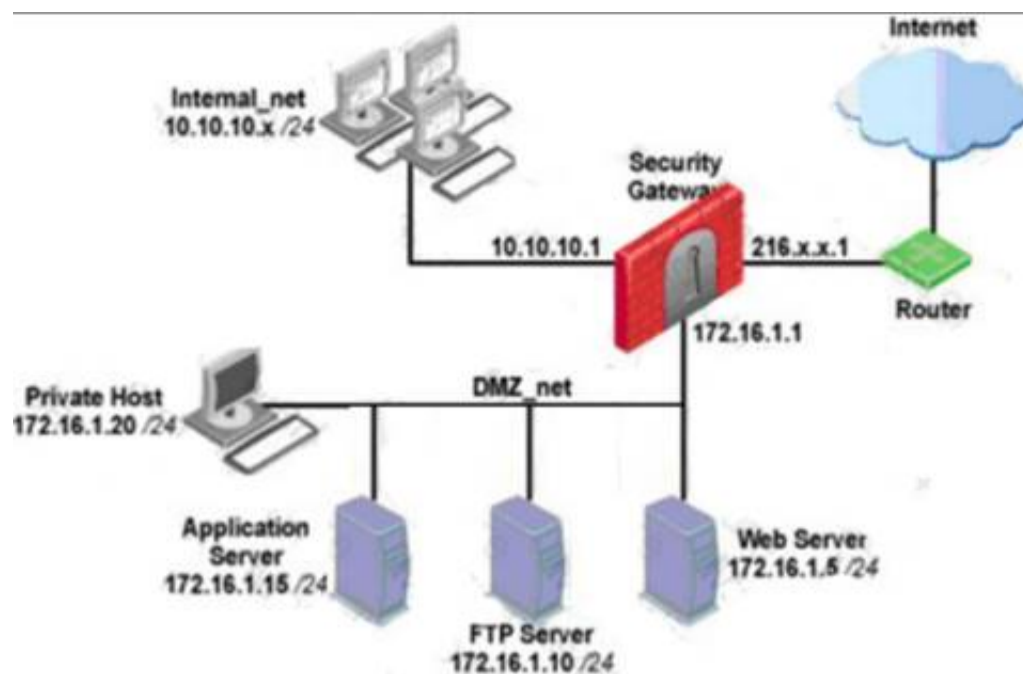
You are about to integrate RSA SecurID users into the Check Point infrastructure. What kind of users are to be defined via SmartDashboard?

- A. A group with generic user
- B. All users
- C. LDAP Account Unit Group
- D. Internal user Group

Answer: A

NEW QUESTION 150

You have three servers located in a DMZ, using private IP addresses. You want internal users from 10.10.10.x to access the DMZ servers by public IP addresses. Internal_net 10.10.10.x is configured for Hide NAT behind the Security Gateway's external interface.



What is the best configuration for 10.10.10.x users to access the DMZ servers, using the DMZ servers' public IP addresses?

- A. When connecting to internal network 10.10.10.x, configure Hide NAT for the DMZ network behind the Security Gateway DMZ interface.
- B. When the source is the internal network 10.10.10.x, configure manual static NAT rules to translate the DMZ servers.
- C. When connecting to the Internet, configure manual Static NAT rules to translate the DMZ servers.
- D. When trying to access DMZ servers, configure Hide NAT for 10.10.10.x behind the DMZ's interface.

Answer: B

NEW QUESTION 153

You find that Users are not prompted for authentication when they access their Web servers, even though you have created an HTTP rule via User Authentication. Choose the BEST reason why.

- A. You checked the cache password on desktop option in Global Properties.
- B. Another rule that accepts HTTP without authentication exists in the Rule Base.
- C. You have forgotten to place the User Authentication Rule before the Stealth Rule.
- D. Users must use the SecuRemote Client, to use the User Authentication Rule.

Answer: B

NEW QUESTION 158

When using GAIa, it might be necessary to temporarily change the MAC address of the interface eth 0 to 00:0C:29:12:34:56. After restarting the network the old MAC address should be active. How do you configure this change?

A. As expert user, issue these commands:

```
# IP link set eth0 down
# IP link set eth0 addr 00:0C:29:12:34:56
# IP link set eth0 up
```

B. Edit the file /etc/sysconfig/netconf.C and put the new MAC address in the field

```
(conf
: (conn
: (conn
: hwaddr ("00:0C:29:12:34:56")
```

C. As expert user, issue the command:

```
# IP link set eth0 addr 00:0C:29:12:34:56
```

D. Open the WebUI, select Network > Connections > eth0. Place the new MAC address in the field Physical Address, and press Apply to save the settings.

- A. Option A
- B. Option B
- C. Option C
- D. Option D

Answer: A

NEW QUESTION 160

Jennifer McHanry is CEO of ACME. She recently bought her own personal iPad. She wants use her iPad to access the internal Finance Web server. Because the iPad is not a member of the Active Directory domain, she cannot identify seamlessly with AD Query. However, she can enter her AD credentials in the Captive Portal and then get the same access as on her office computer. Her access to resources is based on rules in the R80 Firewall Rule Base.

To make this scenario work, the IT administrator must:

- 1) Enable Identity Awareness on a gateway and select Captive Portal as one of the Identity Sources.
- 2) In the Portal Settings window in the User Access section, make sure that Name and password login is selected.
- 3) Create a new rule in the Firewall Rule Base to let Jennifer McHanry access network destinations. Select accept as the Action.

Ms. McHanry tries to access the resource but is unable. What should she do?

- A. Have the security administrator select the Action field of the Firewall Rule "Redirect HTTP connections to an authentication (captive) portal"
- B. Have the security administrator reboot the firewall
- C. Have the security administrator select Any for the Machines tab in the appropriate Access Role

D. Install the Identity Awareness agent on her iPad

Answer: A

NEW QUESTION 162

Match the following commands to their correct function.

Command	Function
C1 <code>cp_admin_convert</code>	F1: export and import different revisions of the database.
C2 <code>cpca_client</code>	F2: export and import policy packages.
C3 <code>cp_merge</code>	F3: transfer Log data to an external database.
C4 <code>cpwd_admin</code>	F4: execute operations on the ICA.
	F5: invokes and monitors critical processes such as Check Point daemons on the local machine.
	F6: automatically export administrator definitions that were created in <code>cpconfig</code> to SmartDashboard.

Each command has one function only listed.

- A. C1>F6; C2>F4; C3>F2; C4>F5
- B. C1>F2; C2>F1; C3>F6; C4>F4
- C. C1>F2; C2>F4; C3>F1; C4>F5
- D. C1>F4; C2>F6; C3>F3; C4>F2

Answer: A

NEW QUESTION 165

After implementing Static Address Translation to allow Internet traffic to an internal Web Server on your DMZ, you notice that any NATed connections to that machine are being dropped by anti-spoofing protections. Which of the following is the MOST LIKELY cause?

- A. The Global Properties setting Translate destination on client side is unchecked
- B. But the topology on the DMZ interface is set to Internal - Network defined by IP and Mas
- C. Check the Global Properties setting Translate destination on client side.
- D. The Global Properties setting Translate destination on client side is unchecked
- E. But the topology on the external interface is set to Others +. Change topology to External.
- F. The Global Properties setting Translate destination on client side is checked
- G. But the topology on the external interface is set to External
- H. Change topology to Others +.
- I. The Global Properties setting Translate destination on client side is checked
- J. But the topology on the DMZ interface is set to Internal - Network defined by IP and Mas
- K. Uncheck the Global Properties setting Translate destination on client side.

Answer: A

NEW QUESTION 167

Many companies have defined more than one administrator. To increase security, only one administrator should be able to install a Rule Base on a specific Firewall. How do you configure this?

- A. Define a permission profile in SmartDashboard with read/write privileges, but restrict it to all other firewalls by placing them in the Policy Targets field
- B. Then, an administrator with this permission profile cannot install a policy on any Firewall not listed here.
- C. Put the one administrator in an Administrator group and configure this group in the specific Firewall object in Advanced > Permission to Install.
- D. In the object General Properties representing the specific Firewall, go to the Software Blades product list and select Firewall
- E. Right-click in the menu, select Administrator to Install to define only this administrator.
- F. Right-click on the object representing the specific administrator, and select that Firewall in Policy Targets.

Answer: B

NEW QUESTION 171

Your company's Security Policy forces users to authenticate to the Gateway explicitly, before they can use any services. The Gateway does not allow the Telnet service to itself from any location. How would you configure authentication on the Gateway? With a:

- A. Client Authentication rule using the manual sign-on method, using HTTP on port 900
- B. Client Authentication rule, using partially automatic sign on
- C. Client Authentication for fully automatic sign on
- D. Session Authentication rule

Answer: A

NEW QUESTION 173

Several Security Policies can be used for different installation targets. The Firewall protecting Human Resources' servers should have its own Policy Package. These rules must be installed on this machine and not on the Internet Firewall. How can this be accomplished?

- A. A Rule Base is always installed on all possible target

- B. The rules to be installed on a Firewall are defined by the selection in the Rule Base row Install On.
C. When selecting the correct Firewall in each line of the Rule Base row Install On, only this Firewall is shown in the list of possible installation targets after selecting Policy > Install on Target.
D. In the menu of SmartDashboard, go to Policy > Policy Installation Targets and select the correct firewall via Specific Targets.
E. A Rule Base can always be installed on any Check Point Firewall object.
F. It is necessary to select the appropriate target directly after selecting Policy > Install on Target.

Answer: C

NEW QUESTION 174

You have configured Automatic Static NAT on an internal host-node object. You clear the box Translate destination on client site from Global Properties > NAT. Assuming all other NAT settings in Global Properties are selected, what else must be configured so that a host on the Internet can initiate an inbound connection to this host?

- A. No extra configuration is needed.
B. A proxy ARP entry, to ensure packets destined for the public IP address will reach the Security Gateway's external interface.
C. The NAT IP address must be added to the external Gateway interface anti-spoofing group.
D. A static route, to ensure packets destined for the public NAT IP address will reach the Gateway's internal interface.

Answer: D

NEW QUESTION 176

You want to generate a cpinfo file via CLI on a system running GAIa. This will take about 40 minutes since the log files are also needed. What action do you need to take regarding timeout?

- A. No action is needed because cpshell has a timeout of one hour by default.
B. Log in as the default user expert and start cpinfo.
C. Log in as admin, switch to expert mode, set the timeout to one hour with the command, idle 60, then start cpinfo.
D. Log in as Administrator, set the timeout to one hour with the command idle 60 and start cpinfo.

Answer: D

NEW QUESTION 181

You need to back up the routing, interface, and DNS configuration information from your R80 GAIa Security Gateway. Which backup-and-restore solution do you use?

- A. Manual copies of the directory \$FWDIR/conf
B. GAIa back up utilities
C. upgrade_export and upgrade_import commands
D. Database Revision Control

Answer: B

NEW QUESTION 186

Security Gateway R80 supports User Authentication for which of the following services? Select the response below that contains the MOST correct list of supported services.

- A. SMTP, FTP, TELNET
B. SMTP, FTP, HTTP, TELNET
C. FTP, HTTP, TELNET
D. FTP, TELNET

Answer: C

NEW QUESTION 187

You have a diskless appliance platform. How do you keep swap file wear to a minimum?

- A. Issue FW-1 bases its package structure on the Security Management Server, dynamically loading when the firewall is booted.
B. The external PCMCIA-based flash extension has the swap file mapped to it, allowing easy replacement.
C. Use PRAM flash devices, eliminating the longevity.
D. A RAM drive reduces the swap file thrashing which causes fast wear on the device.

Answer: D

NEW QUESTION 188

You are a Security Administrator who has installed Security Gateway R80 on your network. You need to allow a specific IP address range for a partner site to access your intranet Web server. To limit the partner's access for HTTP and FTP only, you did the following:

- 1) Created manual Static NAT rules for the Web server.
2) Cleared the following settings in the Global Properties > Network Address Translation screen:
- Allow bi-directional NAT
- Translate destination on client side

Do the above settings limit the partner's access?

- A. Yes
B. This will ensure that traffic only matches the specific rule configured for this traffic, and that the Gateway translates the traffic after accepting the packet.
C. No
D. The first setting is not applicable

- E. The second setting will reduce performance.
- F. Ye
- G. Both of these settings are only applicable to automatic NAT rules.
- H. N
- I. The first setting is only applicable to automatic NAT rule
- J. The second setting will force translation by the kernel on the interface nearest to the client.

Answer: D

NEW QUESTION 191

How granular may an administrator filter an Access Role with identity awareness? Per:

- A. Specific ICA Certificate
- B. AD User
- C. Radius Group
- D. Windows Domain

Answer: B

NEW QUESTION 194

Which of the following commands can provide the most complete restoration of a R80 configuration?

- A. upgrade_import
- B. cpinfo -recover
- C. cpconfig
- D. fwm dbimport -p <export file>

Answer: A

NEW QUESTION 197

You are responsible for the configuration of MegaCorp's Check Point Firewall. You need to allow two NAT rules to match a connection. Is it possible? Give the BEST answer.

- A. No, it is not possible to have more than one NAT rule matching a connectio
- B. When the firewall receives a packet belonging to a connection, it compares it against the first rule in the Rule Base, then the second rule, and so o
- C. When it finds a rule that matches, it stops checking and applies that rule.
- D. Yes, it is possible to have two NAT rules which match a connection, but only in using Manual NAT (bidirectional NAT).
- E. Yes, there are always as many active NAT rules as there are connections.
- F. Yes, it is possible to have two NAT rules which match a connection, but only when using Automatic NAT (bidirectional NAT).

Answer: D

NEW QUESTION 199

You are the Security Administrator for MegaCorp. A Check Point firewall is installed and in use on a platform using GAiA. You have trouble configuring the speed and duplex settings of your Ethernet interfaces. Which of the following commands can be used in CLISH to configure the speed and duplex settings of an Ethernet interface and will survive a reboot? Give the BEST answer.

- A. ethtool
- B. set interface <options>
- C. mii_tool
- D. ifconfig -a

Answer: B

NEW QUESTION 203

Fill in the blank. To enter the router shell, use command ____.

Answer:

Explanation: cligated

NEW QUESTION 208

Review the Rule Base displayed.

NO	NAME	SOURCE	DESTINATION	VPN	SERVICE	ACTION	TRACK	INSTALL ON	TIME
1	Stealth Rule	★ Any	Corporate-gw	★ Any Traffic	★ Any	drop	Log	★ Policy Targ	★ Any
2	Local uses using AOL	Corporate-internal-ne	★ Any	★ Any Traffic	AOL	accept	Log	★ Policy Targ	★ Any
3	Customers Accessing Web Server	Customers@Any	Corporate-web-s	★ Any Traffic	http	Client Auth	Log	★ Policy Targ	★ Any
4	Incoming Emails	★ Any	Corporate-mail-s	★ Any Traffic	smtp->MailFilter	accept	Log	★ Policy Targ	★ Any
5	HTTP/FTP access	Corporate-internal-ne	★ Any	★ Any Traffic	http ftp	accept	Log	★ Policy Targ	★ Any
6	Cleanup Rule	★ Any	★ Any	★ Any Traffic	★ Any	drop	Log	★ Policy Targ	★ Any

For which rules will the connection templates be generated in SecureXL?

- A. Rules 2 and 5
- B. Rules 2 through 5
- C. Rule 2 only
- D. All rules except Rule 3

Answer: D

NEW QUESTION 213

Which process should you debug if SmartDashboard login fails?

- A. sdm
- B. cpd
- C. fwd
- D. fwm

Answer: D

NEW QUESTION 216

When migrating the SmartEvent data base from one server to another, the first step is to back up the files on the original server. Which of the following commands should you run to back up the SmartEvent data base?

- A. migrate export
- B. eva_db_backup
- C. snapshot
- D. backup

Answer: B

NEW QUESTION 218

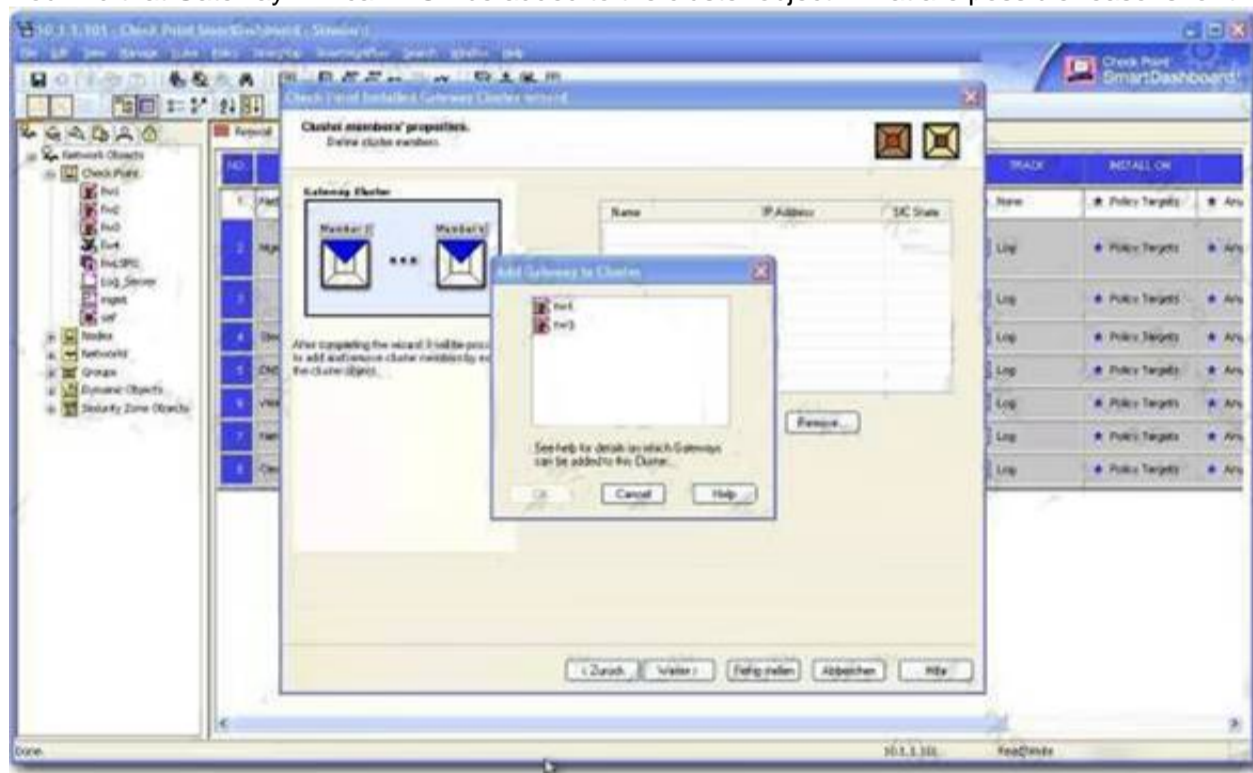
Type the full fw command and syntax that will show full synchronization status.

Answer:

Explanation: fw ctl pstat

NEW QUESTION 220

You find that Gateway fw2 can NOT be added to the cluster object. What are possible reasons for that? Exhibit:



- 1) fw2 is a member in a VPN community.
- 2) ClusterXL software blade is not enabled on fw2.
- 3) fw2 is a DAIP Gateway.

- A. 2 or 3
- B. 1 or 2
- C. 1 or 3
- D. All

Answer: C

NEW QUESTION 224

Your organization maintains several IKE VPN's. Executives in your organization want to know which mechanism Security Gateway R80 uses to guarantee the authenticity and integrity of messages. Which technology should you explain to the executives?

- A. Certificate Revocation Lists
- B. Application Intelligence
- C. Key-exchange protocols
- D. Digital signatures

Answer: D

NEW QUESTION 228

Type the full cphaprob command and syntax that will show full synchronization status.

Answer:

Explanation: cphaprob -i list

NEW QUESTION 229

What command syntax would you use to see accounts the gateway suspects are service accounts?

- A. pdp check_log
- B. pdp show service
- C. adlog check_accounts
- D. adlog a service_accounts

Answer: D

NEW QUESTION 234

Which of the following CLISH commands would you use to set the admin user's shell to bash?

- A. set user admin shell bash
- B. set user admin shell /bin/bash
- C. set user admin shell = /bin/bash
- D. set user admin /bin/bash

Answer: B

NEW QUESTION 236

Fill in the blank. To remove site-to-site IKE and IPSEC keys you would enter command and select the option to delete all IKE and IPSec SA's.

Answer:

Explanation: vpn tu

NEW QUESTION 239

To stop acceleration on a GAIa Security Gateway, enter command:

Answer:

Explanation: fwaccel off

NEW QUESTION 241

Which statements about Management HA are correct?

- 1) Primary SmartCenter describes first installed SmartCenter
- 2) Active SmartCenter is always used to administrate with SmartConsole
- 3) Active SmartCenter describes first installed SmartCenter
- 4) Primary SmartCenter is always used to administrate with SmartConsole

- A. 1 and 4
- B. 2 and 3
- C. 1 and 2
- D. 3 and 4

Answer: C

NEW QUESTION 246

You run cphaprob -a if. When you review the output, you find the word DOWN. What does DOWN mean?

- A. The cluster link is down.
- B. The physical interface is administratively set to DOWN.
- C. The physical interface is down.
- D. CCP packets couldn't be sent to or didn't arrive from neighbor member.

Answer: D

NEW QUESTION 251

In the following cluster configuration; if you reboot sglondon_1 which device will be active when sglondon_1 is back up and running? Why?

- A. sglondon_1 because it the first configured object with the lowest IP.
- B. sglondon_2 because sglondon_1 has highest IP.
- C. sglondon_1, because it is up again, sglondon_2 took over during reboot.
- D. sglondon_2 because it has highest priority.

Answer: D

NEW QUESTION 256

Fill in the blank. To verify the SecureXL status, you would enter command .

Answer:

Explanation: fwaccel stat

NEW QUESTION 259

Which command will only show the number of entries in the connection table?

- A. fw tab -t connections -s
- B. fw tab -t connections -u
- C. fw tab -t connections
- D. fw tab

Answer: A

NEW QUESTION 263

What mechanism does a gateway configured with Identity Awareness and LDAP initially use to communicate with a Windows 2003 or 2008 server?

- A. WMI
- B. CIFS
- C. RCP
- D. LDAP

Answer: A

NEW QUESTION 267

Which file defines the fields for each object used in the file objects.C (color, num/string, default value...)?

- A. \$FWDIR/conf/classes.C
- B. \$FWDIR/conf/scheam.C
- C. \$FWDIR/conf/fields.C
- D. \$FWDIR/conf/table.C

Answer: A

NEW QUESTION 271

Match the VPN-related terms with their definitions. Each correct term is only used once. Exhibit:

Term	Definition
A. VPN Community	1. Clusters grouped in a star network configuration
B. VPN Domain	2. Traffic routed to VPN tunnel based on route table entries.
C. Domain Based VPN	3. Hosts behind the Gateway.
D. Route Based VPN	4. Collection of VPN tunnels.
	5. Traffic routed to VPN tunnel based on object definitions

- A. A-3, B-4, C-1, D-5
- B. A-4, B-3, C-5, D-2
- C. A-2, B-5, C-4, D-1
- D. A-3, B-2, C-1, D-4

Answer: B

NEW QUESTION 275

Your company has the requirement that SmartEvent reports should show a detailed and accurate view of network activity but also performance should be guaranteed. Which actions should be taken to achieve that?

- 1) Use same hard drive for database directory, log files, and temporary directory.
- 2) Use Consolidation Rules.
- 3) Limit logging to blocked traffic only.

4) Use Multiple Database Tables.

- A. 2, 4
- B. 1, 3, 4
- C. 1, 2, 4
- D. 1, 2

Answer: A

NEW QUESTION 280

Match the ClusterXL modes with their configurations. Exhibit:

Mode	Configuration
A. Legacy mode High Availability	1. Every member of the cluster receives all packets sent to the cluster IP address, with the load distributed among all cluster members.
B. New mode High Availability	2. All machines may be active, based on a peak load algorithm. A failure of the active machine causes a failover to a cluster member bearing a lesser load.
C. Load Sharing Multicast mode	3. Provides a clustering mechanism through the use of cloned interface configuration details.
D. Load Sharing Unicast mode	4. One machine in the cluster receives all traffic from a router, and redistributes the packets to other machines in the cluster, implementing both Load Sharing and redundancy.
	5. Only one machine is active at any one time. A failure of the active machine causes a failover to the next highest priority machine in the cluster.

- A. A-2, B-3, C-4, D-1
- B. A-2, B-3, C-1, D-5
- C. A-3, B-5, C-1, D-4
- D. A-5, B-2, C-4, D-1

Answer: C

NEW QUESTION 285

To provide full connectivity upgrade status, use command

Answer:

Explanation: cphaprob fcustat

NEW QUESTION 288

In a zero downtime scenario, which command do you run manually after all cluster members are upgraded? Answer:
cphaconf set_ccp multicast

Answer:

NEW QUESTION 291

Paul has just joined the MegaCorp security administration team. Natalie, the administrator, creates a new administrator account for Paul in SmartDashboard and installs the policy. When Paul tries to login it fails. How can Natalie verify whether Paul's IP address is predefined on the security management server?

- A. Login to Smart Dashboard, access Properties of the SMS, and verify whether Paul's IP address is listed.
- B. Type cpconfig on the Management Server and select the option "GUI client List" to see if Paul's IP address is listed.
- C. Login in to Smart Dashboard, access Global Properties, and select Security Management, to verify whether Paul's IP address is listed.
- D. Access the WEBUI on the Security Gateway, and verify whether Paul's IP address is listed as a GUI client.

Answer: B

NEW QUESTION 293

MultiCorp has bought company OmniCorp and now has two active AD domains. How would you deploy Identity Awareness in this environment?

- A. You must run an ADquery for every domain.
- B. Identity Awareness can only manage one AD domain.
- C. Only one ADquery is necessary to ask for all domains.
- D. Only Captive Portal can be used.

Answer: A

NEW QUESTION 294

To bind a NIC to a single processor when using CoreXL on GAIa, you would use the command

Answer:

Explanation: sim affinity

NEW QUESTION 296

You are troubleshooting a HTTP connection problem. You've started fw monitor -o http.pcap. When you open http.pcap with Wireshark there is only one line. What is the most likely reason?

- A. fw monitor was restricted to the wrong interface.
- B. Like SmartView Tracker only the first packet of a connection will be captured by fw monitor.
- C. By default only SYN packets are captured.
- D. Acceleration was turned on and therefore fw monitor sees only SYN.

Answer: D

NEW QUESTION 301

What is Check Point's CoreXL?

- A. A way to synchronize connections across cluster members
- B. TCP-18190
- C. Multiple core interfaces on the device to accelerate traffic
- D. Multi Core support for Firewall Inspection

Answer: D

NEW QUESTION 304

Which of the following authentication methods can be configured in the Identity Awareness setup wizard?

- A. Check Point Password
- B. TACACS
- C. LDAP
- D. Windows password

Answer: C

NEW QUESTION 309

MegaCorp is using SmartCenter Server with several gateways. Their requirements result in a heavy log load. Would it be feasible to add the SmartEvent Correlation Unit and SmartEvent Server to their SmartCenter Server?

- A. N
- B. SmartCenter SIC will interfere with the function of SmartEvent.
- C. N
- D. If SmartCenter is already under stress, the use of a separate server for SmartEvent is recommended.
- E. No, SmartEvent and Smartcenter cannot be installed on the same machine at the same time.
- F. Ye
- G. SmartEvent must be installed on your SmartCenter Server.

Answer: B

NEW QUESTION 310

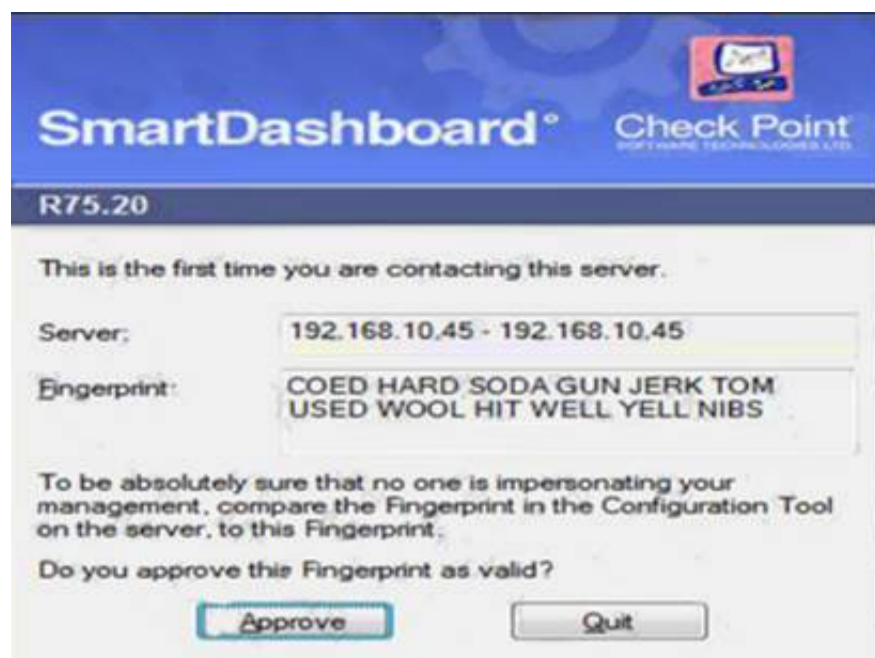
The command useful for debugging by capturing packet information, including verifying LDAP authentication on all Check Point platforms is

Answer:

Explanation: fw monitor

NEW QUESTION 312

How could you compare the Fingerprint shown to the Fingerprint on the server? Exhibit:



- A. Run cpconfig, select the Certificate's Fingerprint option and view the fingerprint
- B. Run cpconfig, select the GUI Clients option and view the fingerprint
- C. Run cpconfig, select the Certificate Authority option and view the fingerprint
- D. Run sysconfig, select the Server Fingerprint option and view the fingerprint

Answer: A

NEW QUESTION 313

When migrating the SmartEvent data base from one server to another, the last step is to save the files on the new server. Which of the following commands should you run to save the SmartEvent data base files on the new server?

- A. cp
- B. restore
- C. migrate import
- D. eva_db_restore

Answer: D

NEW QUESTION 318

MegaCorp is running Smartcenter R70, some Gateways at R65 and some other Gateways with R60. Management wants to upgrade to the most comprehensive IPv6 support. What should the administrator do first?

- A. Upgrade Smartcenter to R80 first.
- B. Upgrade R60-Gateways to R65.
- C. Upgrade every unit directly to R80.
- D. Check the ReleaseNotes to verify that every step is supported.

Answer: D

NEW QUESTION 321

Write the full fw command and syntax that you would use to troubleshoot ClusterXL sync issues.

Answer:

Explanation: fw tab -s -t connections

NEW QUESTION 323

Type the command and syntax you would use to verify that your Check Point cluster is functioning correctly. Answer:
 cphaprob state

Answer:

NEW QUESTION 327

You have selected the event Port Scan from Internal Network in SmartEvent, to detect an event when 30 port scans have occurred within 60 seconds. You also want to detect two port scans from a host within 10 seconds of each other. How would you accomplish this?

- A. Define the two port-scan detections as an exception.
- B. You cannot set SmartEvent to detect two port scans from a host within 10 seconds of each other.
- C. Select the two port-scan detections as a sub-event.
- D. Select the two port-scan detections as a new event.

Answer: A

NEW QUESTION 331

In a zero downtime firewall cluster environment, what command syntax do you run to avoid switching problems around the cluster for command cphaconf?

Answer:

Explanation: set_ccp broadcast

NEW QUESTION 335

How many pre-defined exclusions are included by default in SmartEvent R80 as part of the product installation?

- A. 5
- B. 10
- C. 3

Answer:

NEW QUESTION 337

If you need strong protection for the encryption of user data, what option would be the BEST choice?

- A. Use Diffie-Hellman for key construction and pre-shared keys for Quick Mod
- B. Choose SHA in Quick Mode and encrypt with AE
- C. Use AH protocol
- D. Switch to Aggressive Mode.
- E. When you need strong encryption, IPsec is not the best choic
- F. SSL VPN's are a better choice.
- G. Use certificates for Phase 1, SHA for all hashes, AES for all encryption and PFS, and use ESP protocol.
- H. Disable Diffie-Hellman by using stronger certificate based key-derivatio
- I. Use AES-256 bit on all encrypted channels and add PFS to QuickMod
- J. Use double encryption by implementing AH and ESP as protocols.

Answer: C

NEW QUESTION 338

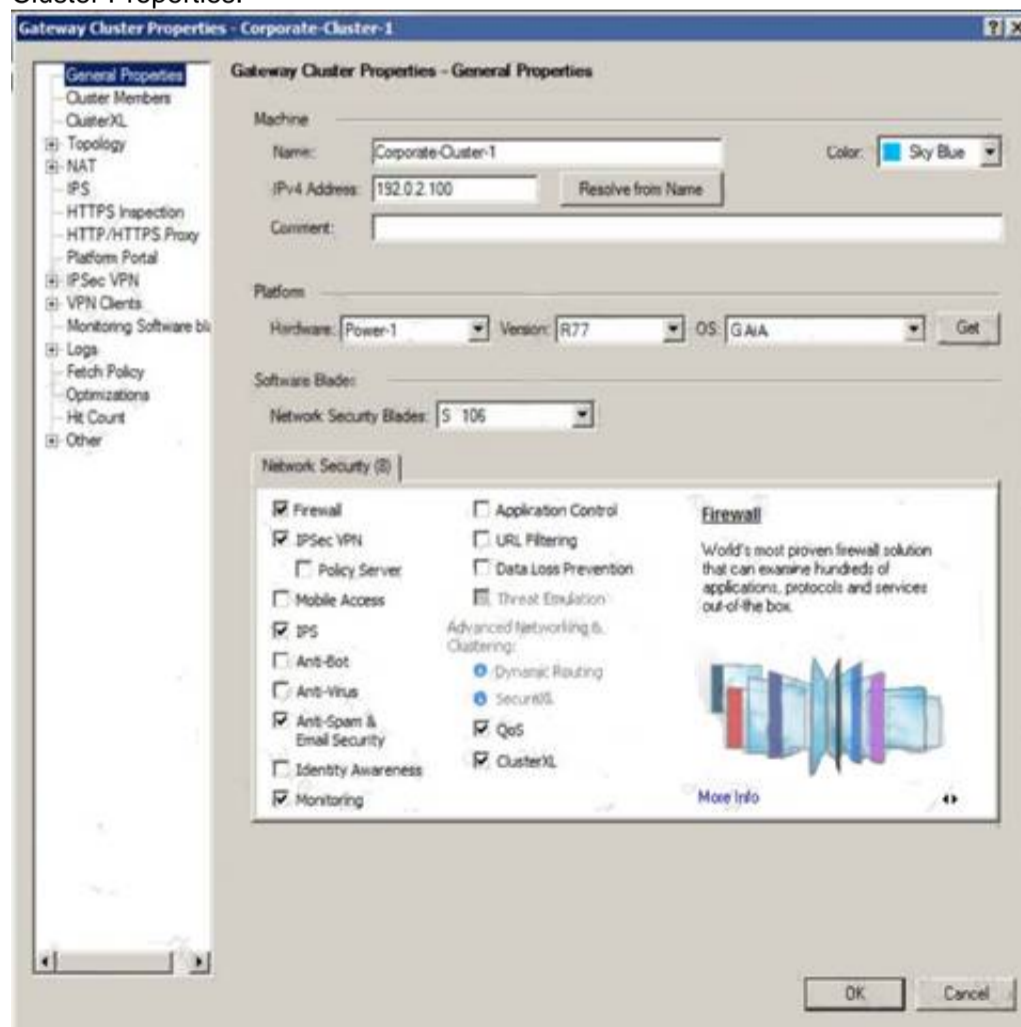
Type the full fw command and syntax that allows you to disable only sync on a cluster firewall member.

Answer:

Explanation: fw ctl setsync off

NEW QUESTION 339

John is configuring a new R80 Gateway cluster but he can not configure the cluster as Third Party IP Clustering because this option is not available in Gateway Cluster Properties.



What's happening?

- A. ClusterXL needs to be unselected to permit third party clustering configuration.

- B. Third Party Clustering is not available for R80 Security Gateways.
- C. John has an invalid ClusterXL license.
- D. John is not using third party hardware as IP Clustering is part of Check Point's IP Appliance.

Answer: A

NEW QUESTION 341

Which of the following items should be configured for the Security Management Server to authenticate using LDAP?

- A. Login Distinguished Name and password
- B. Windows logon password
- C. Check Point Password
- D. WMI object

Answer: A

NEW QUESTION 343

.....

THANKS FOR TRYING THE DEMO OF OUR PRODUCT

Visit Our Site to Purchase the Full Set of Actual 156-915.80 Exam Questions With Answers.

We Also Provide Practice Exam Software That Simulates Real Exam Environment And Has Many Self-Assessment Features. Order the 156-915.80 Product From:

<https://www.2passeasy.com/dumps/156-915.80/>

Money Back Guarantee

156-915.80 Practice Exam Features:

- * 156-915.80 Questions and Answers Updated Frequently
- * 156-915.80 Practice Questions Verified by Expert Senior Certified Staff
- * 156-915.80 Most Realistic Questions that Guarantee you a Pass on Your FirstTry
- * 156-915.80 Practice Test Questions in Multiple Choice Formats and Updatesfor 1 Year