

010-151 Dumps

Cisco Certified Technician (CCT) for Data Center

<https://www.certleader.com/010-151-dumps.html>



NEW QUESTION 1

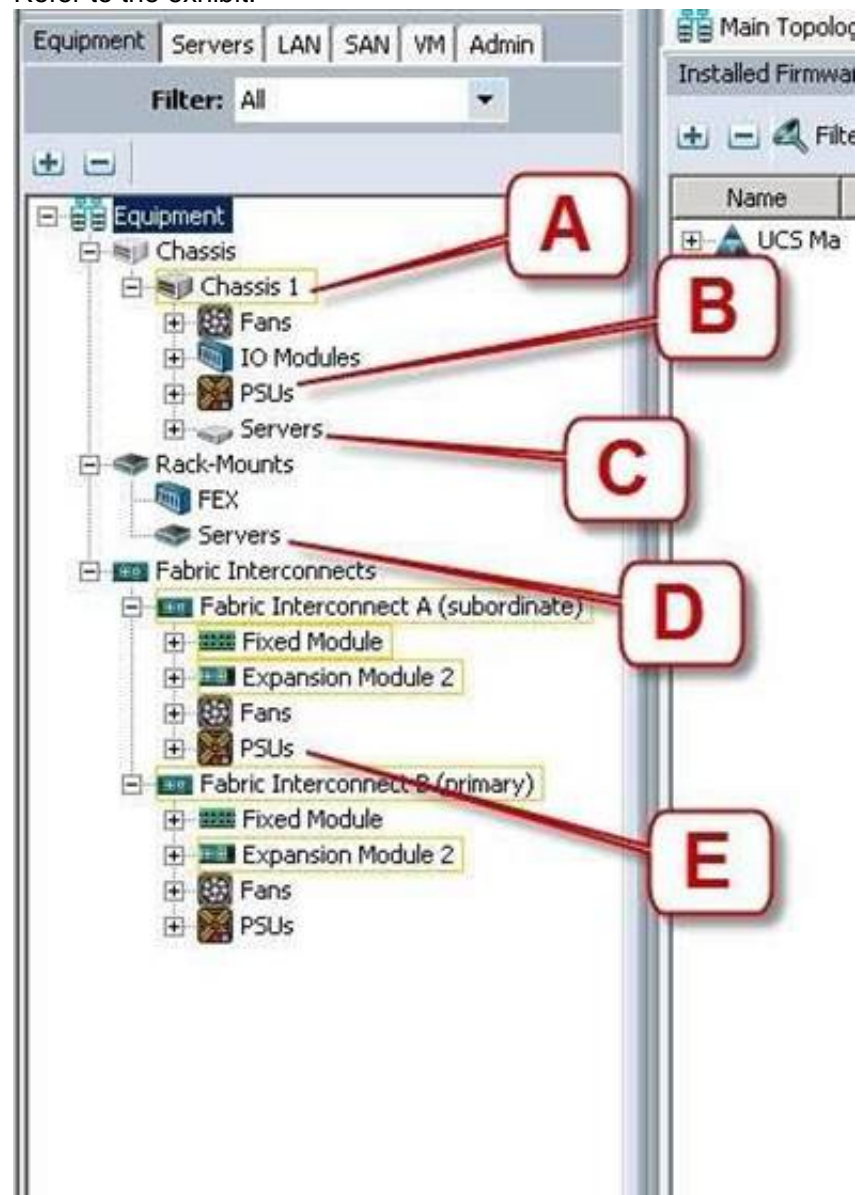
Which command syntax is correct to reset the admin password when the switch is in the kickstart prompt "switch(boot) #"?

- A. connect nxos -> admin-password <password>
- B. admin-password <password>
- C. connect local-mgmt -> admin-password <password>
- D. configure terminal -> admin-password <password>
- E. exec -> admin-password <password>

Answer: D

NEW QUESTION 2

Refer to the exhibit.



Where is the best place to see the power supply status of the blade server enclosure?

- A. D - Rack-Mounts - Servers
- B. E - Fabric Interconnects A - PSUs
- C. C - Chassis1 - Servers
- D. A - Chassis 1
- E. B - Chassis 1 - PSUs

Answer: E

NEW QUESTION 3

Which two commands display the version of Cisco NX-OS code that the device is currently running on? (Choose two.)

- A. show version
- B. show module
- C. show interface
- D. show boot
- E. show license

Answer: AB

NEW QUESTION 4

On the Sensors page from the CIMC view, which four tabs are displayed to view further information? (Choose four.)

- A. Power Supply
- B. Fan
- C. Memory
- D. CPU
- E. LEDs
- F. Temperature

Answer: ABEF

NEW QUESTION 5

Which tool does a network administrator not need when installing hardware?

- A. cable tester
- B. wrench set
- C. cable wraps
- D. needle-nose pliers
- E. PCMCIA memory
- F. soldering iron with grounded tip

Answer: F

NEW QUESTION 6

When the Cisco UCS Manager is used to verify the B- or C-Series device, which two types of Overall Status are acceptable and do not indicate a failure? (Choose two.)

- A. Online
- B. OK
- C. Unassociated
- D. Active

Answer: BC

NEW QUESTION 7

If the Overall Status for a Cisco UCS B-Series Blade Server indicates a failure in the Cisco UCS Manager, such as discovery-failed, which statement is true?

- A. The server shuts down
- B. The server automatically reboots reboot in 3 minute
- C. The endpoints on that server cannot be upgrade
- D. The server is online, but the administrator cannot assign a service profile to that blad

Answer: C

NEW QUESTION 8

Which action should the administrator take before physically removing a blade server for maintenance or replacement?

- A. Force the server to shut down
- B. Disassociate the service profil
- C. Decommission the serve
- D. Perform a graceful shutdown of the serve

Answer: C

NEW QUESTION 9

Which three statements about powering down a Cisco UCS C-Series Rack-Mount Server to perform maintenance or replacement are true? (Choose three.)

- A. Standby power mode: Power is supplied only to the service processor and the cooling fans, and it is safe to power off the server from this mod
- B. Power status LE
- C. Green indicates that the server is in main power mode and can be safely powered of
- D. Graceful shutdown: Press and release the power butto
- E. The operating system performs a graceful shutdown, and the server goes to standby mode, which is indicated by an amber power status LE
- F. Disconnect the power cords from the power supplies in your server to completely power off the serve
- G. Only an emergency shutdown can be performed using the power button on the server front pane
- H. The Cisco UCS C-Series Rack-Mount Server has only one power mod

Answer: ACD

NEW QUESTION 10

Which five things should the administrator verify after performing maintenance or replacing a blade server? (Choose five.)

- A. blade server status
- B. hard drive status
- C. host OS boot status
- D. CPU status
- E. mezzanine card status
- F. memory DIMM status
- G. fan and power status

Answer: ABDEF

NEW QUESTION 10

After installation or replacement of a Cisco UCS C-Series Rack-Mount Server, the host does not boot. Which four options should be verified? (Choose four.)

- A. Verify the power source to the equipmen
- B. Check for loose HDD cable
- C. Reseat the DIMMs, CPU, and PCI card
- D. Verify that power supplies are receiving powe
- E. Reseat the mezzanine card connecto
- F. Check the CPU sockets for bent pin
- G. Check the Cisco IMC for fan fault

Answer: ACDF

NEW QUESTION 11

Which two commands allow you to view the state of high availability between the two clustered Fabric Interconnects? (Choose two.)

- A. show cluster state extended
- B. show cluster extended-state
- C. show cluster HA status
- D. show cluster state

Answer: BD

NEW QUESTION 12

On which three devices can the Host Upgrade Utility be performed? (Choose three.)

- A. C420
- B. C230
- C. B230
- D. B210
- E. C210
- F. B460
- G. C240

Answer: AEG

NEW QUESTION 15

When a host firmware package policy is created, what must it be associated with to upgrade the BIOS?

- A. blade or blade pool
- B. service profile
- C. boot policy
- D. service template

Answer: B

NEW QUESTION 17

Up to what speed can Category 5e UTP cable transmit data?

- A. 10 Mb/s
- B. 100 Mb/s
- C. 1000 Mb/s
- D. 10000 Mb/s

Answer: C

NEW QUESTION 22

Which two statements about the Cisco Nexus 5596UP switch are true? (Choose two.)

- A. Its power supplies and fan trays are hot-swappabl
- B. It supports unified port
- C. It is offered in a one-rack-unit form facto
- D. It has one expansion slo
- E. It supports up to 96 10G BASE-T port

Answer: AB

NEW QUESTION 25

Which two Cisco Nexus switches provide the foundation of the Cisco Application Centric Infrastructure? (Choose two.)

- A. Cisco Nexus 7718 switch
- B. Cisco Nexus 9508 switch
- C. Cisco Nexus 7710 switch
- D. Cisco Nexus 93128TX switch
- E. Cisco Nexus 6004 switch

Answer: BD

NEW QUESTION 27

Which type of optics module is supported by a 6-port 40 GE Cisco Nexus 7000 M2 Series I/O module?

- A. CPAK
- B. QSFP+
- C. SFP/SFP+
- D. CFP

Answer: B

NEW QUESTION 32

DRAG DROP

Drag the password recovery procedures on a Cisco NX-OS switch from the left to the right and place them in order.	
Log in to the switch using the new administrator password.	Step 1
Reset the network administrator password.	Step 2
Load the Cisco NX-OS system software image.	Step 3
Power-cycle the switch.	Step 4
Reset the new password to ensure that it is also the Simple Network Management Protocol (or SNMP) password.	Step 5
To enter the boot prompt mode, press the Ctrl-] key sequence from the console port session when the switch begins the Cisco NX-OS software boot sequence.	Step 6
Save the configuration.	Step 7
Display the bootflash: contents to locate the Cisco NX-OS software image.	Step 8

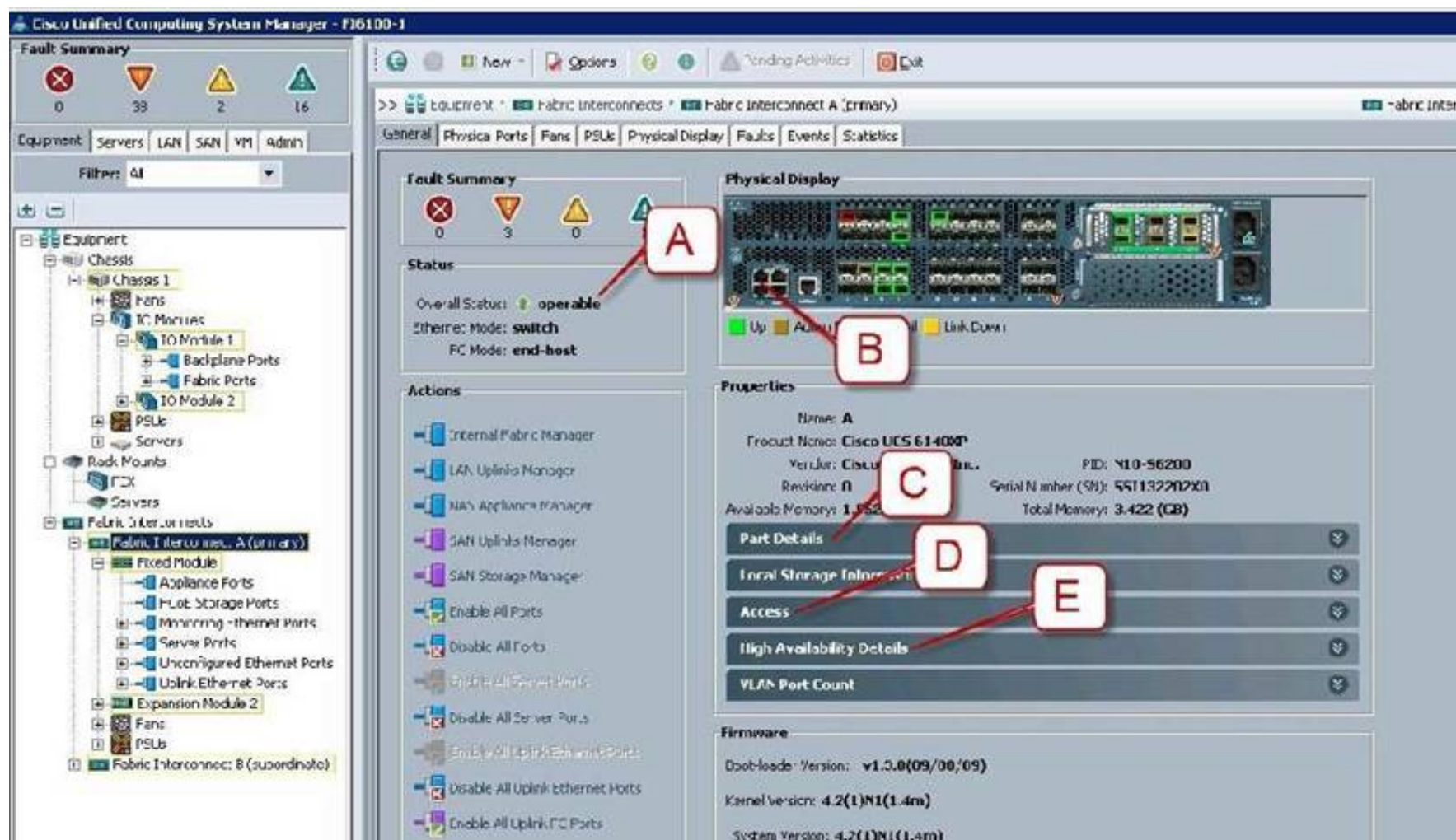
Answer:

Explanation:

Drag the password recovery procedures on a Cisco NX-OS switch from the left to the right and place them in order.	
Log in to the switch using the new administrator password.	Power-cycle the switch.
Reset the network administrator password.	To enter the boot prompt mode, press the Ctrl-] key sequence from the console port session when the switch begins the Cisco NX-OS software boot sequence.
Load the Cisco NX-OS system software image.	Reset the network administrator password.
Power-cycle the switch.	Display the bootflash: contents to locate the Cisco NX-OS software image.
Reset the new password to ensure that it is also the Simple Network Management Protocol (or SNMP) password.	Load the Cisco NX-OS system software image.
To enter the boot prompt mode, press the Ctrl-] key sequence from the console port session when the switch begins the Cisco NX-OS software boot sequence.	Log in to the switch using the new administrator password.
Save the configuration.	Reset the new password to ensure that it is also the Simple Network Management Protocol (or SNMP) password.
Display the bootflash: contents to locate the Cisco NX-OS software image.	Save the configuration.

NEW QUESTION 35

Refer to the exhibit.



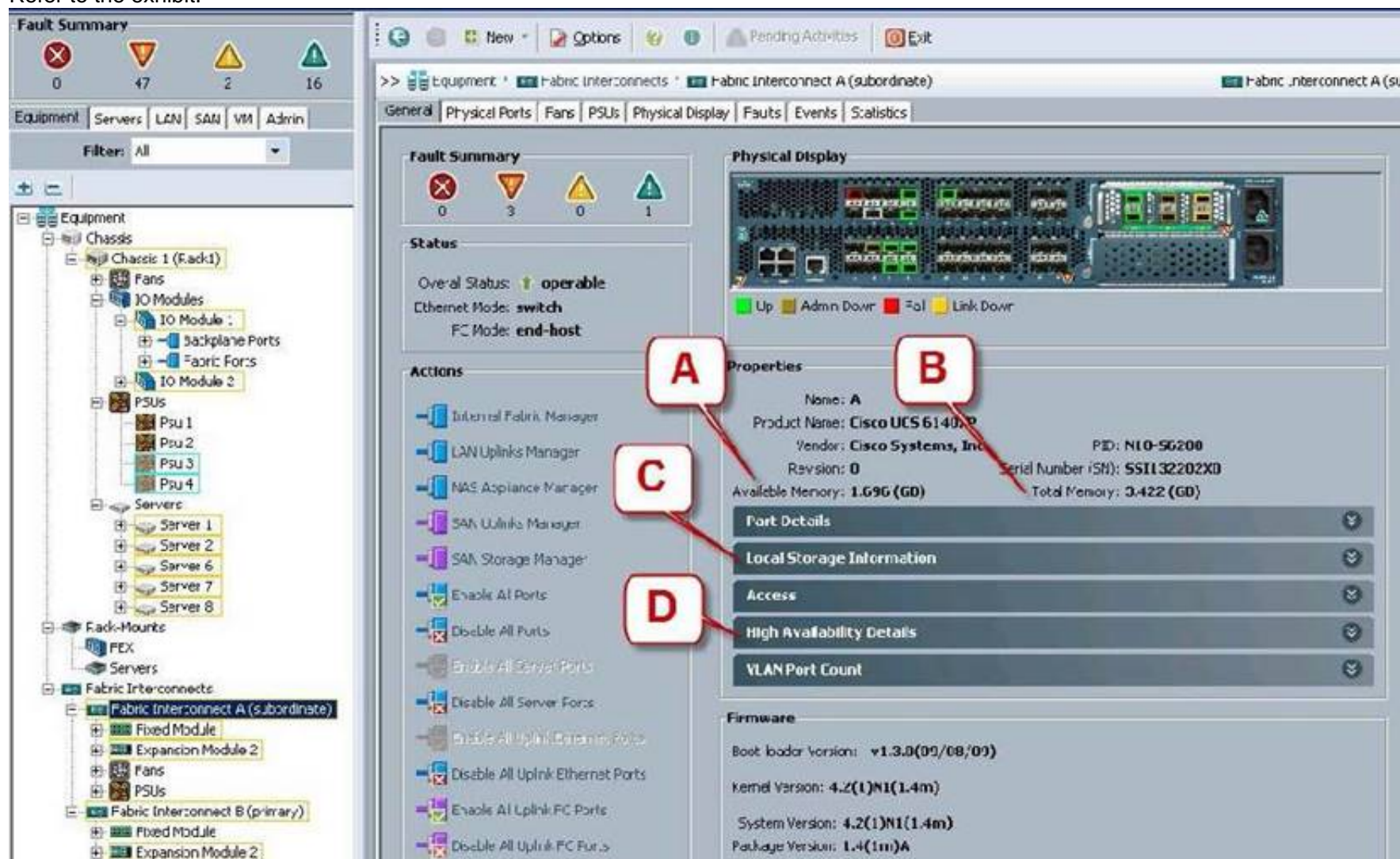
Where is the best place to see whether the system is ready for a Fabric Interconnect failover?

- A. D - Access
- B. E - High Availability Details
- C. C - Part Details
- D. B - L1 Connection
- E. A - Overall Status operable

Answer: B

NEW QUESTION 40

Refer to the exhibit.



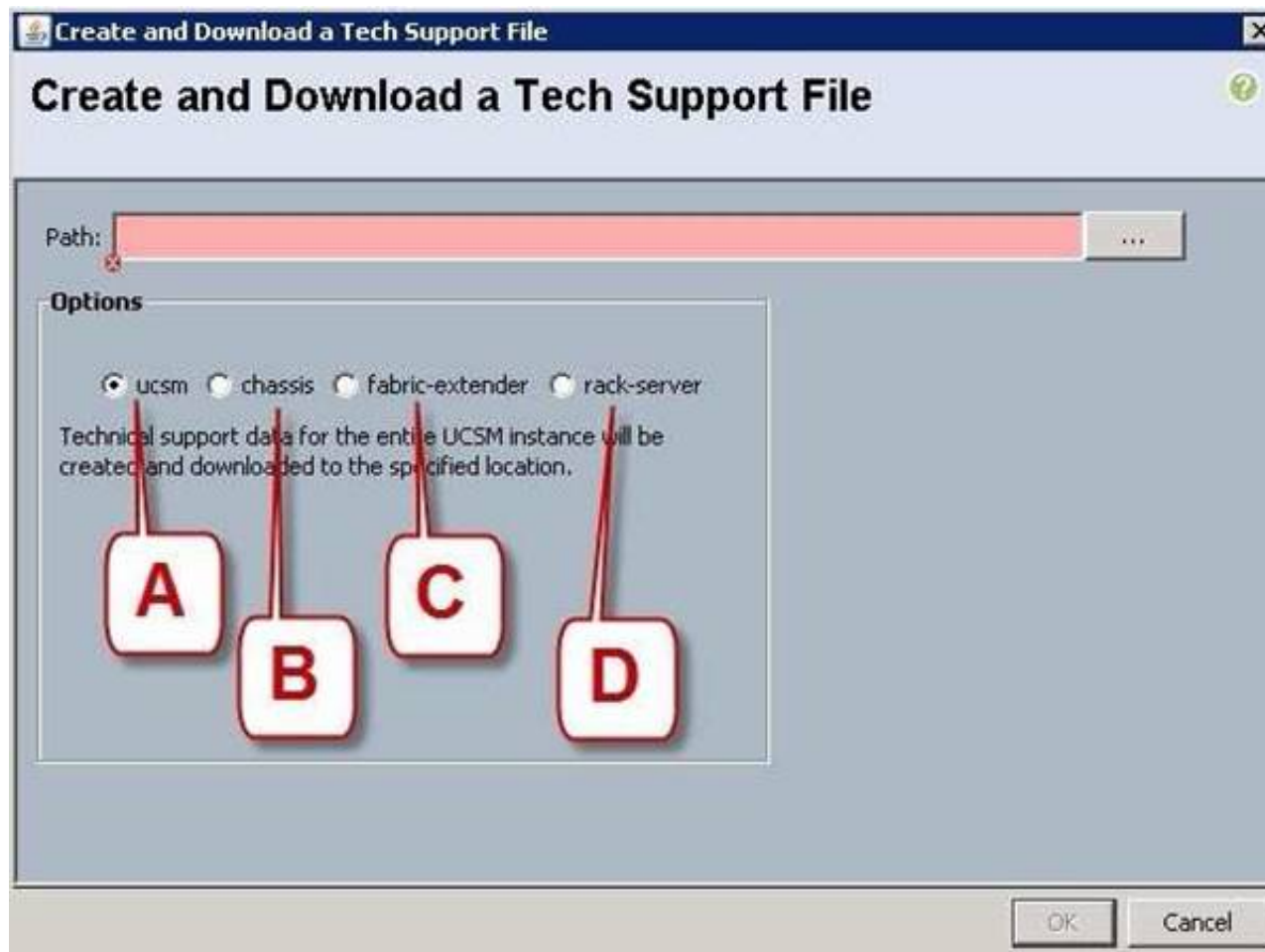
Where is the best place to see bootflash free space?

- A. D - High Availability Details
- B. C - Local Storage Information
- C. B - Total Memory
- D. A - Available Memory

Answer: B

NEW QUESTION 42

Refer to the exhibit.



Which option should you select to get the output of the show tech-support detail command for the Cisco UCS B-Series blade?

- A. C - fabric-extender
- B. D - rack-server
- C. A - ucsm
- D. B - chassis

Answer: D**NEW QUESTION 43**

Refer to the exhibit.



What is the name of this rack-mount server?

- A. Cisco UCS C460 Rack-Mount Server
- B. Cisco UCS C420 Rack-Mount Server
- C. Cisco UCS C240 Rack-Mount Server
- D. Cisco UCS C220 Rack-Mount Server

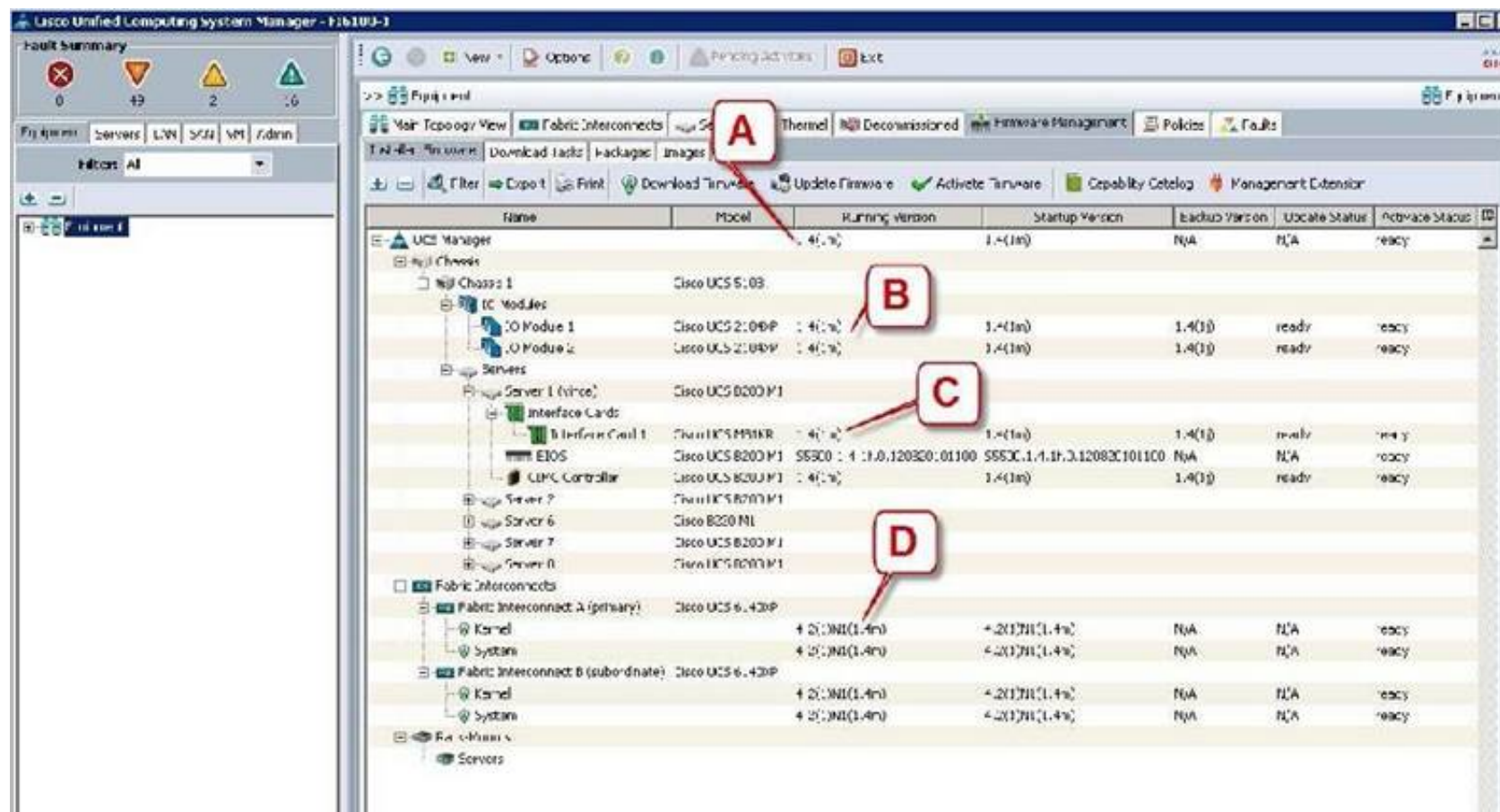
Answer: B**NEW QUESTION 45**

Which type of optics module is supported by a 12-port 100 GE Cisco Nexus 7700 F3 Series I/O module?

- A. CFP
- B. SFP/SFP+
- C. QSFP+
- D. CPAK

Answer: D**NEW QUESTION 49**

Refer to the exhibit.



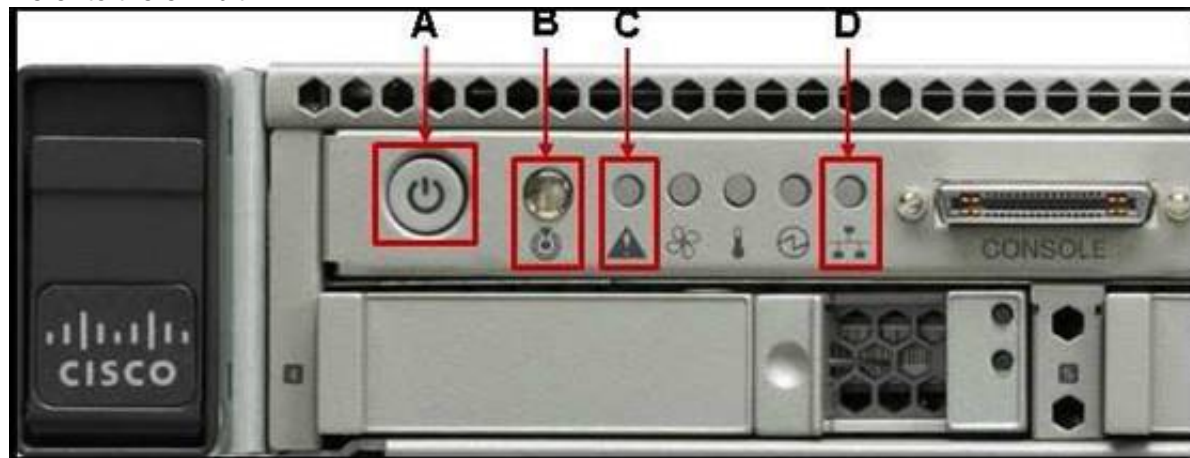
Which call-out accurately shows the current running version of the Cisco UCS Manager management software?

- A. D - Kernel running version 4.2(1)N(1.4m)
- B. C - Interface Card 1 running version 1.4(1m)
- C. B - IO Module 1 running version 1.4(1m)
- D. A - UCS Manager running version 1.4(1m)

Answer: D

NEW QUESTION 50

Refer to the exhibit.



Which statement correctly identifies the front panel LEDs on the Cisco UCS C220 Server?

- A. A is network link activity LED; B is system status LED; C is identification button and LED; D is power button and power status LED
- B. A is system status LED; B is network link activity LED; C is power button and power status LED; D is identification button and LE
- C. A is network link activity LED; B is system status LED; C is power button and power status LED; D is identification button and LE
- D. A is power button and power status LED; B is identification button and LED; C is system status LED; D is network link activity LE

Answer: D

NEW QUESTION 55

Which processor option is supported in the Cisco UCS C420 M3 Server?

- A. two or four Intel Xeon E7-8800 series multicore processors
- B. up to four Intel Xeon E5-4600 series multicore processors
- C. up to two Intel Xeon E7-4800 series multicore processors
- D. up to two Intel Xeon E5-4600 series multicore processors

Answer: B

NEW QUESTION 56

Which Cisco MDS model supports the most Fibre Channel ports per chassis?

- A. MDS 9250i
- B. MDS 9506
- C. MDS 9513
- D. MDS 9509

Answer: C

NEW QUESTION 58

Which two statements about the Ethernet media are true? (Choose two.)

- A. The twinax cables can be found in either a shielded twisted-pair or an unshielded twisted-pair variatio
- B. 40 Gigabit Ethernet twinax cables deploy Enhanced Quad Small Form Factor Pluggable (QSFP+) connector
- C. Compared to multimode fiber, the single-mode fiber is designed for shorter distances with higher cos
- D. A twisted-pair cable system has each pair of wires twisted together to reduce electromagnetic interferenc

Answer: BD

NEW QUESTION 59

Which two statements about PCIe are true? (Choose two.)

- A. A link that is composed of four lanes is called an x4 lin
- B. The PCIe 1.0 standard doubles the transfer rate compared to PCIe 2.0.
- C. The PCIe standard is a bus-based system in which all the devices share the same bidirectional, 32-bit or 64-bit, parallel signal pat
- D. You can install a PCI Express x8 adapter into an x4 slo
- E. The PCIe link is built around dedicated unidirectional couples of serial, point-to-point connections known as lane

Answer: AE

NEW QUESTION 63

Which three statements about FCoE are true? (Choose three.)

- A. Consolidates I/O traffic in the data cente
- B. Increases capital costs due to the difficulty to manag
- C. Encapsulates Fibre Channel frames into Ethernet frames, which allows them to run alongside traditional IP traffi
- D. Allows Fibre Channel and Ethernet networks to share a single, integrated infrastrucur

Answer: ACD

NEW QUESTION 68

Which cable is used to access the command-line interface of a Cisco UCS 6120XP Fabric Interconnects?

- A. Ethernet cable
- B. SFP+ Ethernet transceiver cable
- C. KVM cable
- D. console cable

Answer: D

NEW QUESTION 73

Which method is a TCP/IP-based protocol for establishing and managing connections between IP-based storage devices, hosts, and clients?

- A. iSCSI
- B. FCoE
- C. iFCP
- D. FCIP

Answer: A

NEW QUESTION 74

Which method does FCIP use to enable connectivity of geographically distributed Fibre Channel SANs over IP?

- A. transporting
- B. handshaking
- C. tunneling
- D. routing

Answer: C

NEW QUESTION 76

Which important feature on the front end is provided to the clients by multiple servers that access the same storage devices across the SAN?

- A. storage
- B. security
- C. resiliency
- D. redundancy
- E. recovery

Answer: D

NEW QUESTION 80

.....

Thank You for Trying Our Product

* 100% Pass or Money Back

All our products come with a 90-day Money Back Guarantee.

* One year free update

You can enjoy free update one year. 24x7 online support.

* Trusted by Millions

We currently serve more than 30,000,000 customers.

* Shop Securely

All transactions are protected by VeriSign!

100% Pass Your 010-151 Exam with Our Prep Materials Via below:

<https://www.certleader.com/010-151-dumps.html>