

300-370 Dumps

Troubleshooting Cisco Wireless Enterprise Network

<https://www.certleader.com/300-370-dumps.html>



NEW QUESTION 1

Refer to the exhibit.

```
Apr 8 20:02:55.477: RADIUS(00000031): Send Access-Request
to 10.0.0.3:1234 id 21645/145, len 139
Apr 8 20:02:55.478: RADIUS: authenticator B6 F7 BB 41 0E 9F 44 D1
- 9A F8 E2 D7 5D 70 F2 76
Apr 8 20:02:55.478: RADIUS: User-Name [1] 9 "aironet"
Apr 8 20:02:55.478: RADIUS: Framed-MTU [12] 6 1400
Apr 8 20:02:55.478: RADIUS: Called-Station-Id [30] 16 "0005.9a39.0374"
Apr 8 20:02:55.478: RADIUS: Calling-Station-Id [31] 16 "0002.8aa6.304f"
Apr 8 20:02:55.478: RADIUS: Service-Type [6] 6 Login [1]
Apr 8 20:02:55.478: RADIUS: Message-Authenticator [80] 18 *
Apr 8 20:02:55.478: RADIUS: EAP-Message [79] 14
omitted
Apr 8 20:03:15.470: RADIUS/DECODE:
parse response; FAIL
Apr 8 20:03:15.470: dot11_auth_dot1x_parse_aaa_resp:
Received server response: FAIL
Apr 8 20:03:15.470: dot11_auth_dot1x_parse_aaa_resp:
found eap pak in server response
Apr 8 20:03:15.470: dot11_auth_dot1x_parse_aaa_resp:
detailed aaa_status 1
Apr 8 20:03:15.471: dot11_auth_dot1x_run_rfs:
Executing Action(SERVER_WAIT, SERVER_FAIL) for 0002.8aa6.304f
Apr 8 20:03:15.471: dot11_auth_dot1x_send_client_fail:
Authentication failed for 0002.8aa6.304f
Apr 8 20:03:15.471: %DOT11-7-AUTH_FAILED: Station 0002.8aa6.304f
Authentication failed
```

A client reports being unable to log into the wireless network. According to the output, which network information should be verified?

- A. the Failed Attempts log on the authentication server
- B. that the AP has IP connectivity to the authentication server
- C. that the user has an account on the authentication server
- D. that the authentication and accounting configuration are correct

Answer: B

NEW QUESTION 2

Refer to the exhibit.

```
Dec 7 13:56:09.373: dot11_auth_dot1x_start: in the dot11_auth_dot1x_start
Dec 7 13:56:09.373: dot11_auth_dot1x_send_id_req_to_client:
sending identity request for 0040.96a0.3758
Dec 7 13:56:09.374: dot11_auth_dot1x_send_id_req_to_client:
Started timer client_timeout 30 seconds
Dec 7 13:56:39.358: dot11_auth_dot1x_run_rfs:
Executing Action(CLIENT_WAIT, TIMEOUT) for 0040.96a0.3758
Dec 7 13:56:39.358: dot11_auth_dot1x_send_client_fail:
Authentication failed for 0040.96a0.3758
Dec 7 13:56:39.358: %DOT11-7-AUTH_FAILED:
Station 0040.96a0.3758 Authentication failed
```

A client reports being unable to log into the wireless network, which uses PEAPv2. Which two issues appear in the output? (Choose two)

- A. The AP has the incorrect RADIUS server address
- B. There is a problem with the client supplicant
- C. The AP has lost IP connectivity to the authentication server
- D. The authentic at ion server is misconfigured on the controller
- E. The EAP client timeout value should be increased
- F. The authentication server is misconfigured in the WLAN

Answer: AC

NEW QUESTION 3

While reviewing CleanAir data in Cisco Prime Infrastructure, an engineer notices that a wideband jammer is not sending its Interferer Security Trap correctly. The engineer determines that the default seventy level has been changed. Which value does the engineer select to reset the seventy level to its factory setting?

- A. informational
- B. major
- C. minor
- D. warning
- E. critical

Answer: D

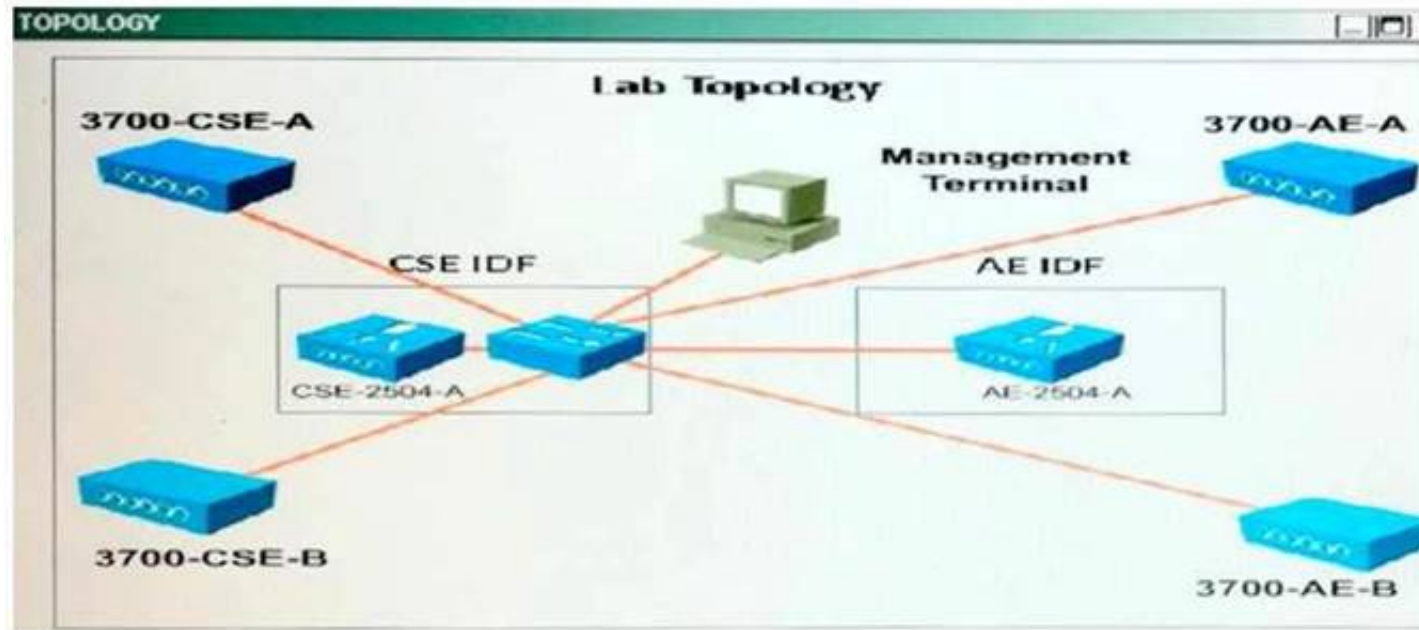
NEW QUESTION 4

Scenario

The big Engineering IT team has been in the lab to test some new features that the existing network does not support. The AP Groups, AP Failover, and Local Web Auth features are having problems. In this test environment, the controllers support the only Composite Structural Engineering and Aerodynamic Engineering groups. All SSIDs must omit the department name.

Refer to the exhibit. The diagram is the floor plan for the Big Engineering office and the distribution of the departments. These tables show how the controllers have been configured.

Note, not all menu items, text boxes, or radio buttons are active.



BE-GA

Controller Management Interfaces

Name	IP address	Gateway	DHCP Interface
CSE-2504A	192.168.2.98/24	192.168.2.1	192.168.2.98
AE-2504A	192.168.3.98/24	192.168.3.1	192.168.3.98
HF-2504A	192.168.4.98/24	192.168.4.1	192.168.4.98

Composite and Structural Engineering (CSE) WLANs

Profile Name	SSID
CSE-Engineering	CSE-Engineering
CSE-Contractors	CSE-Contractors
CSE-Employees	CSE-Employees

AP Groups-CSE-WLANs

WLANs	APs
CSE-Engineering	3700-CSE-A
CSE-Contractors	3700-CSE-B
CSE-Employees	

AE-User Names and Passwords

User Name	Password
Joan Smith	aetest
Carol Black	aetest

You review the configuration of the test network controller. Which four changes must be made to resolve the problems? (Choose four.)

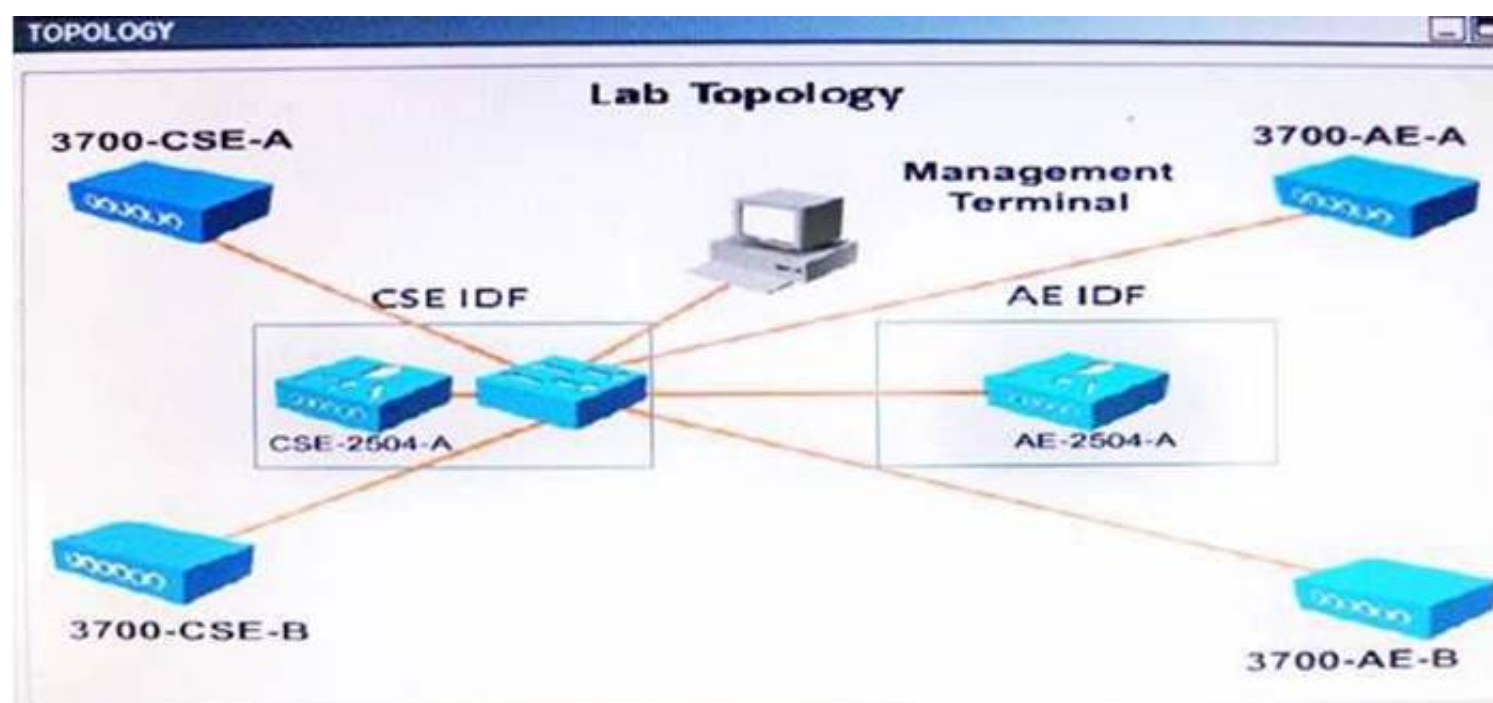
When you review the configuration of the test network controller what needs to be changed to resolve the problems? (Choose four.)

- A. Change the High Availability Primary Controller Management Interface IP address.
- B. Remove the current WLANs and replace them with WLANs that have the same SSID names as on the AE-2504A controller.
- C. Add the Local Net User names and passwords
- D. Change the Layer 2 security to none and Layer 3 Security to Web Policy for the CSE-Contractors WLAN
- E. Remove the current WLAN from the CSE-WLAN AP Group and add all three of the WLANs configured in the CSE-2504A
- F. Add the CSE APs to the CSE-WLANs AP-Group

Answer: BCDF

NEW QUESTION 5

Which two statements about the WLAN are true? (Choose two)



Refer to the exhibit.

Packet	Source	Destination	Channel	Data Rate	Size	Protocol
3377	Intel:2F:D3:70	Cisco:10:44:EF	136	24.0	48	EAP Response
3378	Cisco:10:44:EF	Intel:2F:D3:70	136	24.0	18	802.11 Ack
3379	Cisco:10:44:EF	Intel:2F:D3:70	136	24.0	85	EAP Request
3380	Intel:2F:D3:70	Cisco:10:44:EF	136	6.0	101	EAP Response
3381	Cisco:10:44:EF	Intel:2F:D3:70	136	6.0	18	802.11 Ack
3382	Cisco:10:44:EF	Intel:2F:D3:70	136	24.0	117	EAP Request
3383	Intel:2F:D3:70	Cisco:10:44:EF	136	24.0	149	EAP Response
3384	Cisco:10:44:EF	Intel:2F:D3:70	136	24.0	18	802.11 Ack
3385	Cisco:10:44:EF	Intel:2F:D3:70	136	24.0	133	EAP Request
3386	Intel:2F:D3:70	Cisco:10:44:EF	136	24.0	85	EAP Response
3387	Cisco:10:44:EF	Intel:2F:D3:70	136	24.0	18	802.11 Ack
3388	Intel:2F:D3:70	Cisco:10:44:EF	136	24.0	85	EAP Response
3389	Cisco:10:44:EF	Intel:2F:D3:70	136	24.0	18	802.11 Ack
3390	Cisco:10:44:EF	Intel:2F:D3:70	136	24.0	46	EAP Success
3391	Cisco:10:44:EF	Intel:2F:D3:70	136	24.0	159	EAPOL-Key
3392	Intel:2F:D3:70	Cisco:10:44:EF	136	24.0	161	EAPOL-Key
3393	Cisco:10:44:EF	Intel:2F:D3:70	136	24.0	18	802.11 Ack
3394	Cisco:10:44:EF	Intel:2F:D3:70	136	24.0	193	EAPOL-Key
3395	Intel:2F:D3:70	Cisco:10:44:EF	136	24.0	137	EAPOL-Key
3396	Cisco:10:44:EF	Intel:2F:D3:70	136	24.0	18	802.11 Ack
3397	Cisco:10:44:EF	Intel:2F:D3:70	136	24.0	24	802.11 RTS
3398	Cisco:10:44:EF	Intel:2F:D3:70	136	2.0	108	802.11 Encrypted Data
3399	Cisco:10:44:EF	Intel:2F:D3:70	136	24.0	24	802.11 RTS
3400	Cisco:10:44:EF	Intel:2F:D3:70	136	2.0	108	802.11 Encrypted Data

- A. The client has a 5 GHz connection.
- B. The client has authenticated.
- C. The client is 802.11n capable.
- D. The Cisco device is a 3600 series AP.
- E. 802.11b data rates are disabled in this WLAN

Answer: CE

NEW QUESTION 6

The AP is unable to join the controller. What is the cause of this error? Refer to the exhibit.

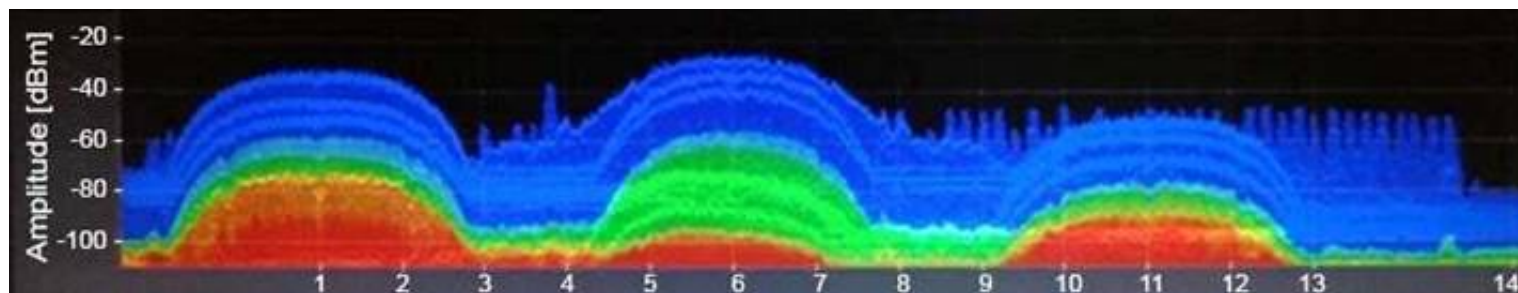
Thu Aug 1	16:23:27	2013	AP	with MAC bb:1f:11:1f:1d:3f (APbb1f.111f.1d3f) is	unknown.
Thu Aug 1	16:23:27	2013	AP	Associated. Base Radio MAC: bb:1f:11:1f:1d:3f	
Thu Aug 1	16:23:13	2013	AP	Disassociated: Base Radio MAC:bb:1f:11:1f:1d:3f	
Thu Aug 1	16:23:16	2013	AP	with MAC bb:1f:11:1f:1d:3f (APbb1f.111f.1d3f) is	unknown.
Thu Aug 1	16:23:16	2013	AP	Associated. Base Radio MAC: bb:1f:11:1f:1d:3f	
Thu Aug 1	16:23:08	2013	AP	Disassociated. Base Radio MAC:bb:1f:11:1f:1d:3f	
Thu Aug 1	16:23:04	2013	AP	with MAC bb:1f:11:1f:1d:3f (APbb1f.111f.1d3f) is	unknown.

- A. The controller code version is lower than the code of the AP attempting to join.
- B. AP code is not the same as the controller and must download firmware.
- C. AP model \% not compatible with the controller code version.
- D. The AP is riot conjured in the controller auth-list of acceptable AP

Answer: C

NEW QUESTION 7

An engineer is troubleshooting non-802.11 interference and observes this output. Which type of interference signatures can be identified? Refer to the exhibit.



- A. one frequency hopping Bluetooth
- B. two healthy CCK and one malformed OFDM
- C. three broadband jammers
- D. two strong microwave ovens and one moderate

Answer: B

NEW QUESTION 8

A new wireless deployment with high AP density is experiencing high latency and connectivity issues on the 24 GHz band, despite an initial site survey done by a certified partner. Which option is the most impactful change a wireless consultant recommends?

Refer to the exhibit.

802.11b/g Global Parameters		Data Rates **	
General			
802.11b/g Network Status	<input checked="" type="checkbox"/> Enabled	1 Mbps	Mandatory ▼
802.11g Support	<input checked="" type="checkbox"/> Enabled	2 Mbps	Supported ▼
Beacon Period (milliseconds)	100	5.5 Mbps	Supported ▼
Short Preamble	<input checked="" type="checkbox"/> Enabled	6 Mbps	Supported ▼
Fragmentation Threshold (bytes)	2346	9 Mbps	Supported ▼
DTPC Support	<input checked="" type="checkbox"/> Enabled	11 Mbps	Supported ▼
Maximum Allowed Clients	200	12 Mbps	Supported ▼
RSSI Low Check	<input checked="" type="checkbox"/> Enabled	18 Mbps	Supported ▼
RSSI Threshold (-60 to -90 dBm)	-80	24 Mbps	Supported ▼
CCX Location Measurement		36 Mbps	Supported ▼
Mode	<input checked="" type="checkbox"/> Enabled	48 Mbps	Supported ▼
Interval (seconds)	60	54 Mbps	Supported ▼

- A. Increase the fragmentation threshold to allow larger packets over the air.
- B. Reduce the beacon period because it reduces the RF interference.
- C. Disable lower data rate, such as 1 Mbps and 2 Mbps.
- D. Disable the short preamble.
- E. Disable 80211g support to reduce interference

Answer: C

NEW QUESTION 9

A wireless user is experiencing connectivity issues with their Mac OS laptop. If the Mac is exhibiting the behavior of a "sticky client," how can the tech verify which AP the user is currently connected to?

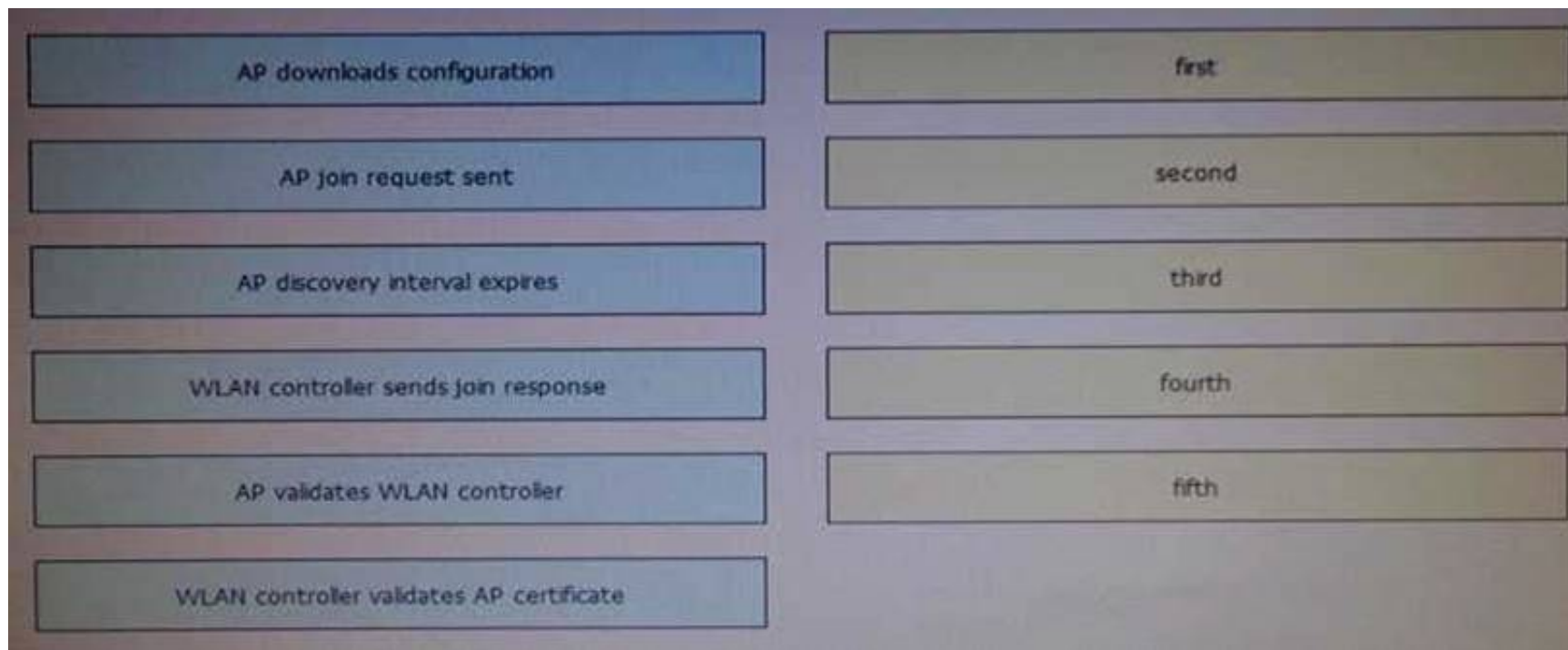
- A. Hold shift while clicking the wireless icon.
- B. Hold option while clicking the wireless icon.
- C. Hold control while clicking the wireless icon.
- D. Hold command while clicking the wireless icon

Answer: B

NEW QUESTION 10

DRAG DROP

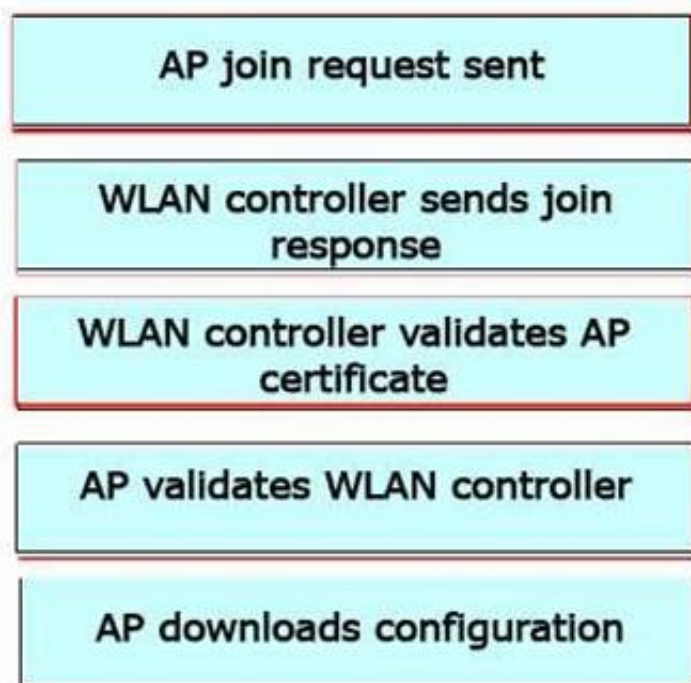
Drag and drop the Layer 3 WLAN controller mutual authentication join process events on the left into the order in which they occur on the right Not all options are used.



- A. Mastered
- B. Not Mastered

Answer: A

Explanation:



NEW QUESTION 10

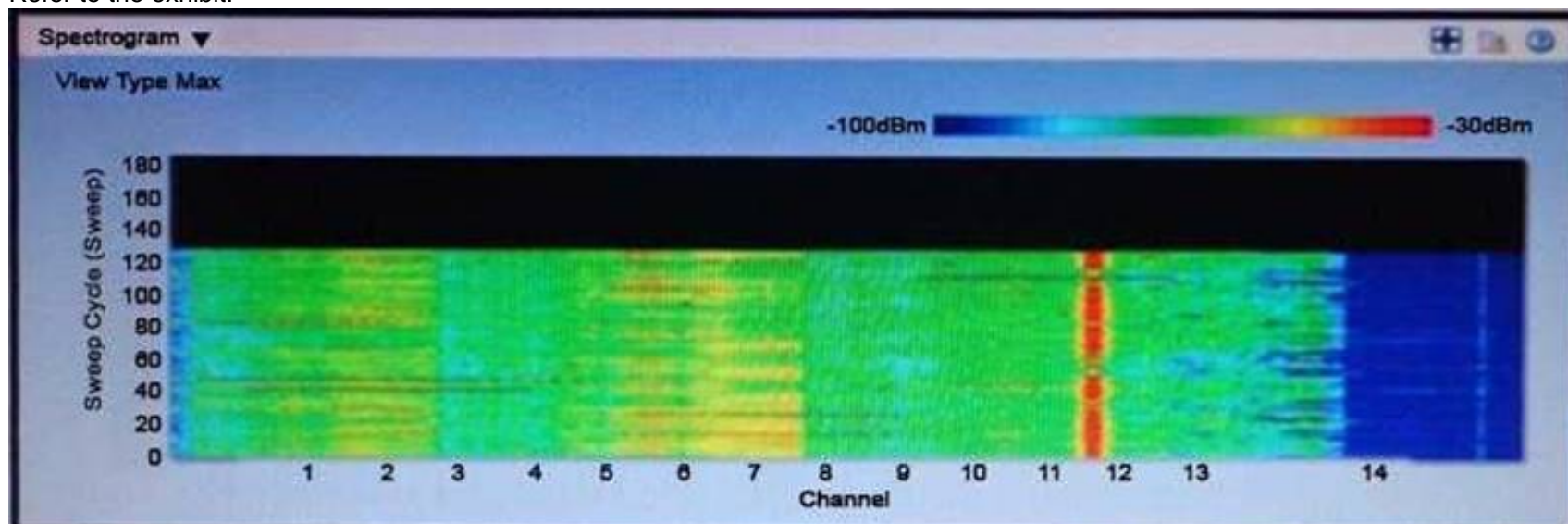
An engineer has configured 802.1x for the network and all but one of the APs are passing authentication. Which configuration is causing the failure?

- A. The AP has override global credentials checked.
- B. The switch AAA credentials do not match what is configured on ISE.
- C. The controller 802.1x supplicant credentials do not match what is configured on ISE
- D. EAP-FAST is configured on ISE for this A

Answer: A

NEW QUESTION 12

Refer to the exhibit.



An engineer is troubleshooting non-802.11 interference and observes this output. Which type of interference signatures can the engineer identify?

- A. microwave
- B. DECT phone
- C. Bluetooth
- D. jammer

Answer: A

NEW QUESTION 17

An AP will be deployed to an area where DHCP Option 43 is unavailable and the WLAN engineer is unable to have DNS modifications made to support this AP. Which two actions can enable the AP to join the WLC? (Choose two)

- A. Issue the clear capwap private-config command in the AP console.
- B. Pre-stage or prime the AP on the same Layer 2 VLAN as the WLC.
- C. Issue the capwap ap ip default-gateway WLC IP address command in the AP console.
- D. Issue the capwap ap ip address WLC IP address command in the AP console.
- E. Issue the capwap ap controller ip address WLC IP address command in the AP console.

Answer: AD

NEW QUESTION 19

A recently acquired Cisco Aironet 1550 series AP is unable to join the WLC. This message is observed on the AP console: AAA Authentication Failure for UserName:CC93.1981.0035 User Type: WLAN USER Which action must be taken for the AP to associate with the controller?

- A. Add MAC address CC93.1981.0035 to the Security AAA AP policy Authorization List.
- B. Authenticate the AP to the WLC from the console using an admin account on the WLC.
- C. Add MAC address CC93.1981.035 to the Security AAA MAC Filtering tab.
- D. Import the self-signed certificate of the AP to the Security:Certificate:LSC tab.
- E. Import the self-signed certificate of the AP to the Security:Certificate:SSC tab.

Answer: A

NEW QUESTION 21

Which feature should a network engineer enable within a mixed-client network to ensure that the legacy client operates at the best possible rates?

- A. ClientLink
- B. RRM
- C. DCA
- D. Band Select

Answer: A

Explanation:

In mixed client environments, 802.11a/g clients may delay communications for 802.11n clients and reduce overall system performance. Organizations can improve the reliability and coverage for legacy 802.11a/g clients, assist these clients in operating at the best possible rates, and help ensure that these legacy clients get on and off the wireless network faster by implementing Cisco ClientLink. Cisco ClientLink is easily enabled through the wireless LAN controller or Cisco Wireless Control System (WCS) control panel.

NEW QUESTION 26

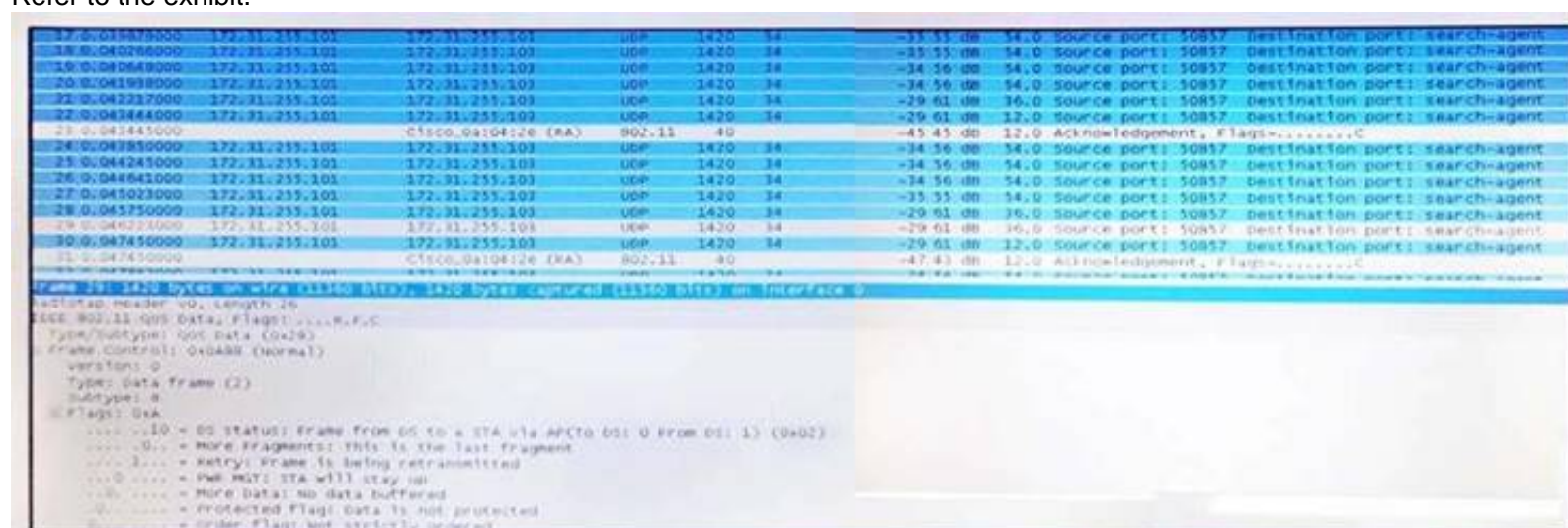
A mobile workstation in a factory contains an AP that is configured as a workgroup bridge. When the workstation moves, it loses connectivity and disrupts operation. What can the engineer implement to minimize roaming problems?

- A. Use 802.1X authentication.
- B. Use Cisco Centralized Key Management for fast roaming.
- C. Use AES for encryption.
- D. Use the mobile station command.

Answer: B

NEW QUESTION 28

Refer to the exhibit.



A VoWLAN has been deployed at a customer site, and users report that audio is choppy in some areas. The exhibit captures a voice exchange between one

phone that is associated to the AP at the end of the corridor (172.31.255.101) and another phone that is positioned in a conference room nearby. Which action enhances the voice application quality of experience?

- A. Change the basic rate configuration on the WLC to include 54 Mbps.
- B. Change the WLAN QoS profile to platinum.
- C. Decrease the AP power level.
- D. Disable higher data rates on the controlle

Answer: A

NEW QUESTION 31

A WLAN engineer has just completed a wireless network installation using Cisco 2700 series access points. After checking the WLC, it seems that the APs are running in medium power. What effect will this have in the APs?

- A. Due to insufficient power, the access points are not broadcasting any Wireless networks.
- B. Due to insufficient power, only the 2.4 GHz radio is up.
- C. Due to insufficient power the access points have dynamically shifted from 3x4 to 3x3.
- D. Due to insufficient power the access points have dynamically shifted from 4x4 to 3x3.

Answer: C

NEW QUESTION 33

A user reports being unable to connect to a server with a certain program while connected to wireless. Which troubleshooting methodology can be used to begin the troubleshooting process?

- A. top-down
- B. shoot from the hip
- C. follow the path
- D. bottom-up
- E. divide and conquer

Answer: A

NEW QUESTION 36

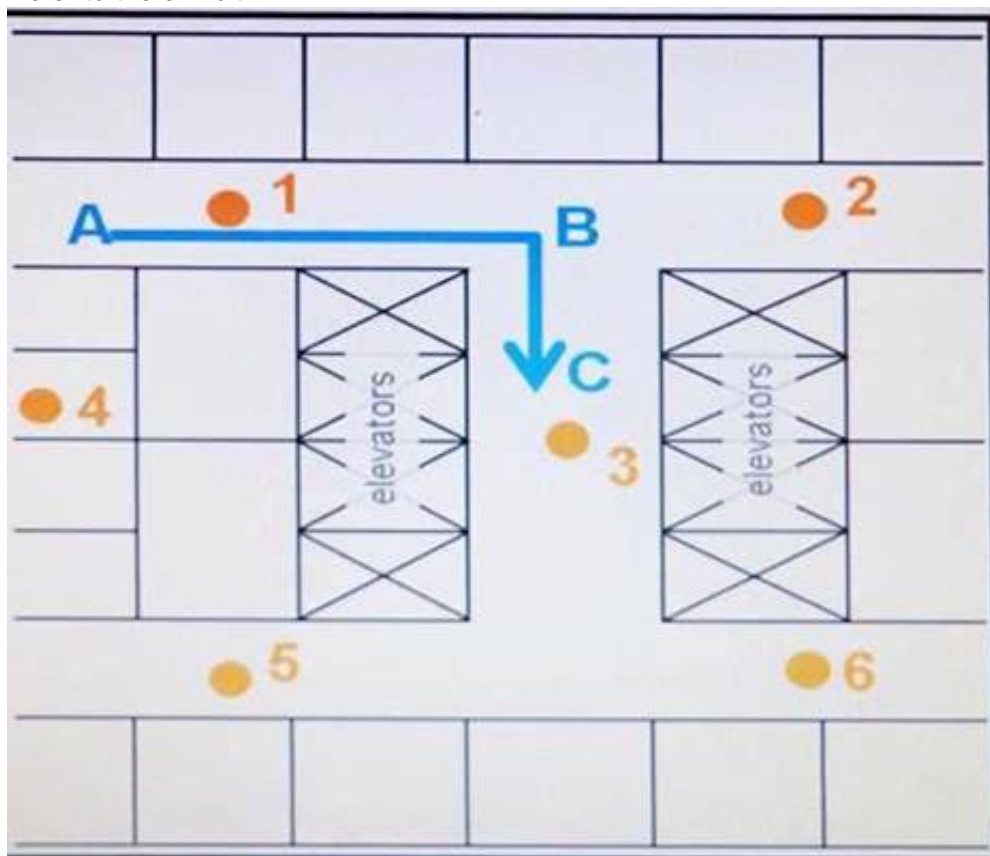
An engineer has received an alarm on a wireless LAN controller and is unsure of its meaning. The engineer attempted to ping the wireless LAN controller interfaces. Which troubleshooting methodology does this action demonstrate?

- A. bottom-up
- B. follow the path
- C. shoot from the hip
- D. top-down
- E. divide and conquer

Answer: E

NEW QUESTION 39

Access points are deployed in an office building and users report that the real-time communications quality of experience is poor when users walk between the elevators. The elevators are a heavy metallic obstacle, and AP 3 was installed to cover the elevator area, which AP 1 and AP 2 signal does not reach. Communications are captured for a user walking from point A to point C, and it is observed that the user iPhone device suddenly scans all bands and then roams from AP 1 to AP 3 somewhere between points B and C. WLAN is set to 5 GHz only. Open, default rate configuration. Which action improves the real-time application quality of experience in this area? Refer to the exhibit.



- A. Enable 802 11v on the WLAN
- B. Enable 802 11r on the WLAN
- C. Enable 802 11k on the WLAN
- D. Move AP 2 to point B

Answer: B

NEW QUESTION 44

A wireless engineer has completed the configuration of a new WLAN on the existing Cisco wireless infrastructure. During testing he found that the wireless client's authenticate and received the correct ip address from the switch, but they were not able to access any of the internal or external resources. Which action will resolve the issue?

- A. Configure static ip addresses for the wireless clients.
- B. Configure the default-router on the switch DHCP pool.
- C. Configure option 82 on the switch DHCP pool.
- D. Configure a dns-server on the switch DHCP poo

Answer: C

NEW QUESTION 46

Refer to the exhibit.

(Cisco Controller) > show ap join state detailed 00:ab:00:ab:00:ab

<pre>Discovery phase statistics - Discovery requests received 10 - Successful discovery responses sent 5 - Unsuccessful discovery request processing..... 2113123 - Reason for last unsuccessful discovery attempt..... Discovery request received on unsupported VLAN - Time at last successful discovery attempt..... Jan 30 14:30:12.284 - Time at last unsuccessful discovery attempt..... Jan 30 14:30:12.288 Join phase statistics - Join requests received..... 4 - Successful join responses sent..... 0 - Unsuccessful join request processing..... 4 - Reason for last unsuccessful join attempt..... Certificate payload in join request contains invalid certificate - Time at last successful join attempt..... Not applicable - Time at last unsuccessful join attempt..... Mar 06 19:19:03.345</pre>	<pre>Configuration phase statistics - Configuration requests received..... 0 - Successful configuration responses sent 0 - Unsuccessful configuration request processing..... 0 - Reason for last unsuccessful configuration attempt.... Not applicable - Time at last successful configuration attempt..... Not applicable - Time at last unsuccessful configuration attempt..... Not applicable Last AP message decryption failure details - Reason for last message decryption failure..... Not applicable Last AP disconnect details - Reason for last AP connection failure..... Not applicable Last join error summary - Type of error that occurred last..... Failed to send Lvapp discovery response - Reason for error that occurred last..... Discovery request received on unsupported VLAN - Time at which the last join error occurred..... Jan 30 14:30:12:288</pre>
--	---

Which statement about the join process of the access point is true?

- A. The time on the controller is outside of the certificates validity time interval, so the join phase failed.
- B. The AP moved from this controller to its primary controller.
- C. The controller rejected most of the discovery requests from the AP because they were not received on the management interface subne
- D. The AP failed to join the controller.
- E. The AP successfully joined the controller.
- F. The AP failed to join because the self-signed certificate of the AP on the controller was not correc

Answer: C

NEW QUESTION 49

Which statement about the usage of the debug command in a Cisco Unified Wireless Network is true?

- A. Debug is enabled until manual shut off.
- B. Debug is a message logging severity 7.
- C. Debug is a restricted command and is not available in the AP CLI.
- D. Debug is available on the WLC serial console and web interfac

Answer: B

NEW QUESTION 51

An engineer is deploying a wireless infrastructure and must use Layer 2 discovery for access point association. Which configuration meets this requirement?

- A. Configure the Access Points and WLC management interface on the same VLAN.
- B. Configure a DNS A RECORD to point to the controller.
- C. Configure option 43 on The APs DHCP scope.
- D. Configure the AP using a serial connection to indicate its controlle

Answer: A

NEW QUESTION 56

An engineer is creating a custom rogue classification rule directly on a controller. Which two conditions are possible when adding a custom rule to a controller? (Choose two.)

- A. internal
- B. ad hoc
- C. client-count
- D. duration
- E. WLAN
- F. open authentication

Answer: AD

NEW QUESTION 57

A Cisco WLC v7.0 is not seeing an AP join. Which starting prefix debug command can help determine a combination of discovery/join and DHCP process status?

- A. debug capwap events - from Cisco WLC
- B. debug capwap events - from the AP
- C. debug ip udp - from Cisco WLC
- D. debug ip udp - from the AP

Answer: D

NEW QUESTION 60

Which modulation, which was introduced in 802.11ac standard, influences end-user experience by providing the highest data rates and throughput?

- A. 256 QAM
- B. QPSK
- C. 16 QAM
- D. 64 QAM

Answer: A

NEW QUESTION 62

An engineer is troubleshooting why a MAC address was not listed in the MAC table and discovers that the VLAN was enabled only on the interface that data is coming in on. Which change fixes this problem?

- A. Enable outgoing interfaces.
- B. Disable sticky MAC on the access switch.
- C. Remove loop detection on interfaces.
- D. Flush the MAC address table

Answer: A

NEW QUESTION 63

Refer to the exhibit.

Packet	Source	Destination	Channel	Data Rate	Size	Protocol
3377	Intel:2F:D3:70	Cisco:10:44:EF	136	24.0	48	EAP Response
3378	Cisco:10:44:EF	Intel:2F:D3:70	136	24.0	18	802.11 Ack
3379	Cisco:10:44:EF	Intel:2F:D3:70	136	24.0	85	EAP Request
3380	Intel:2F:D3:70	Cisco:10:44:EF	136	6.0	101	EAP Response
3381	Cisco:10:44:EF	Intel:2F:D3:70	136	6.0	18	802.11 Ack
3382	Cisco:10:44:EF	Intel:2F:D3:70	136	24.0	117	EAP Request
3383	Intel:2F:D3:70	Cisco:10:44:EF	136	24.0	149	EAP Response
3384	Cisco:10:44:EF	Intel:2F:D3:70	136	24.0	18	802.11 Ack
3385	Cisco:10:44:EF	Intel:2F:D3:70	136	24.0	133	EAP Request
3386	Intel:2F:D3:70	Cisco:10:44:EF	136	24.0	85	EAP Response
3387	Cisco:10:44:EF	Intel:2F:D3:70	136	24.0	18	802.11 Ack
3388	Intel:2F:D3:70	Cisco:10:44:EF	136	24.0	85	EAP Response
3389	Cisco:10:44:EF	Intel:2F:D3:70	136	24.0	18	802.11 Ack
3390	Cisco:10:44:EF	Intel:2F:D3:70	136	24.0	46	EAP Success
3391	Cisco:10:44:EF	Intel:2F:D3:70	136	24.0	159	EAPOL-Key
3392	Intel:2F:D3:70	Cisco:10:44:EF	136	24.0	161	EAPOL-Key
3393	Cisco:10:44:EF	Intel:2F:D3:70	136	24.0	18	802.11 Ack
3394	Cisco:10:44:EF	Intel:2F:D3:70	136	24.0	193	EAPOL-Key
3395	Intel:2F:D3:70	Cisco:10:44:EF	136	24.0	137	EAPOL-Key
3396	Cisco:10:44:EF	Intel:2F:D3:70	136	24.0	18	802.11 Ack
3397	Cisco:10:44:EF	Intel:2F:D3:70	136	24.0	24	802.11 RTS
3398	Cisco:10:44:EF	Intel:2F:D3:70	136	2.0	108	802.11 Encrypted Data
3399	Cisco:10:44:EF	Intel:2F:D3:70	136	24.0	24	802.11 RTS
3400	Cisco:10:44:EF	Intel:2F:D3:70	136	2.0	108	802.11 Encrypted Data

Which two statements about the WLAN are true? (Choose two.)

- A. 802.11b data rates are disabled in this WLAN.
- B. The Cisco device is a 3600 series AP.
- C. The client is 802.11n capable.
- D. The client has authenticated.
- E. The client has a 5 GHz connectio

Answer: CE

NEW QUESTION 68

An engineer has discovered that a number of new access points are failing to join the wireless controller

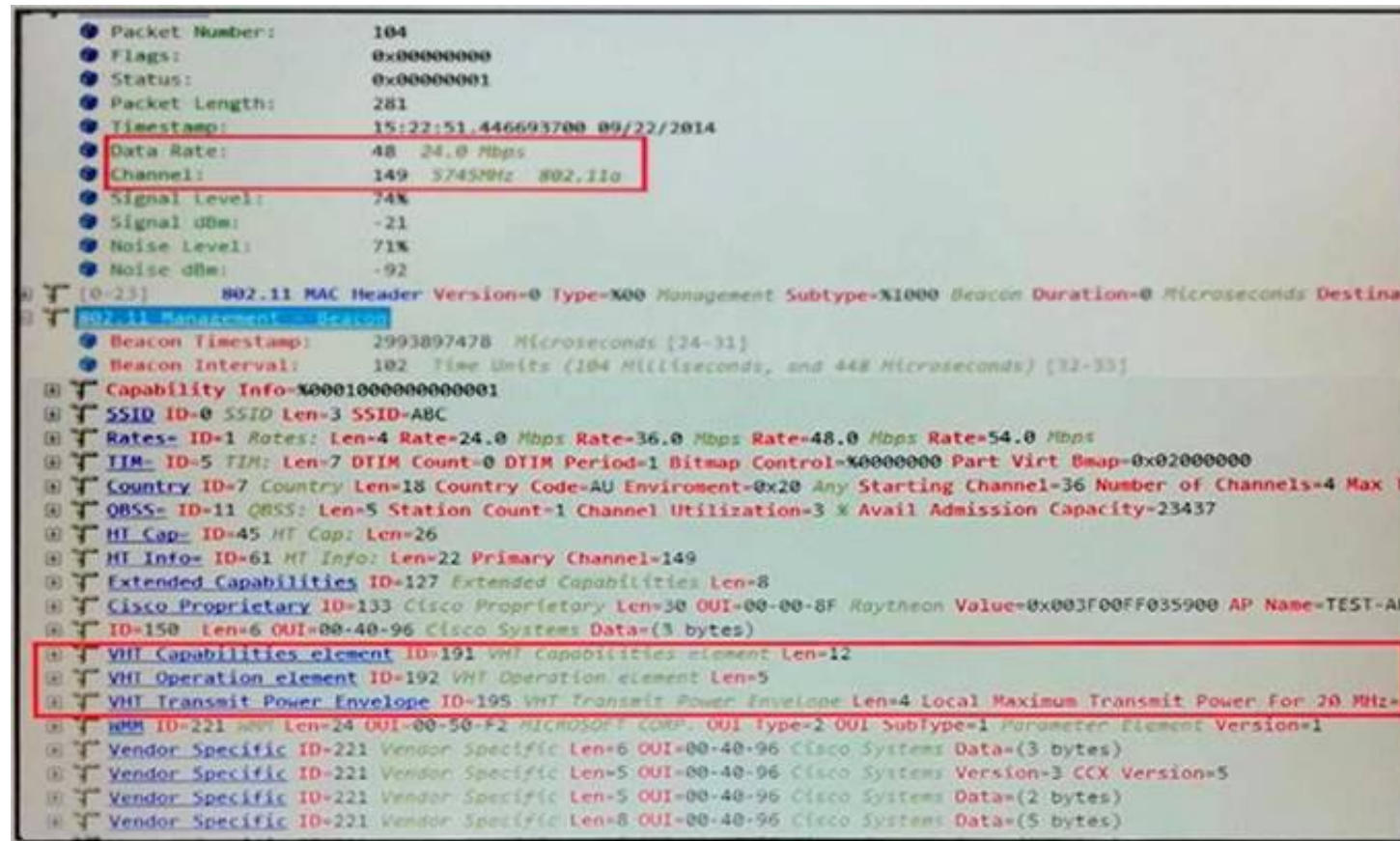
module that has been recently enabled on a switch stack of three Cisco Catalyst 3850 switches running 3.02.03 SE version of Cisco IOS-XE. All cables have been verified and all access point switch port configurations are identical. Which options is the likely root cause of the issue?

- A. Stacked Cisco Catalyst 3850 switches only support 100 CAPWAP termination licences.
- B. Cisco IOS-XE version 3.02.03 SE supports only access points on the master switch.
- C. The EULA has not been accepted on the switch wireless controller module.
- D. When stacked, the Cisco Catalyst 3850 cannot use the wireless controller modul

Answer: D

NEW QUESTION 69

Refer to the exhibit.



What is the highest mandatory rate in Mbps configured for the AP?

- A. 54
- B. 36
- C. 24
- D. 48

Answer: C

NEW QUESTION 70

From the WLC GUI, which RRM setting do you configure to avoid non-Wi-Fi interference?

- A. Coverage
- B. TPC
- C. General
- D. DCA

Answer: D

NEW QUESTION 73

In a high-density deployment on a customer site with ID 339696181, how do you mitigate the cell size in a large coverage area?

- A. Disable ClientLink on the WLC.
- B. Set a high supported data rate.
- C. Increase the power of the AP.
- D. Set a high mandatory

Answer: C

NEW QUESTION 76

A training class has 15 laptops connecting to the WLAN using the same Active Directory training credentials. Users report that they cannot connect until someone else logs off. At any one time, only half of the class connect to the internet. Which option must be checked first?

- A. Maximum Allowed Clients
- B. Client Exclusion
- C. Co-channel interference
- D. DHCP address pool

Answer: A

NEW QUESTION 77

Refer to the exhibits. An engineer is troubleshooting connectivity issues on the guest network.

Interface Group Name guest_int_group

Description Guest Interface Group

Property Non-Quarantine

mDNS Profile none

Interface Name lab management

Add Interface

VLAN Id	Interface Name	
900	vlan-900	▼
977	vlan-997	▼
991	vlan-991	▼
992	vlan-992	▼
993	vlan-993	▼
994	vlan-994	▼
995	vlan-995	▼
996	vlan-996	▼
998	vlan-998	▼
999	vlan-999	▼

Interfaces				
Interface Name	VLAN Identifier	IP Addresses	Interface Type	Dynamic IP Management
lab management	10	10.10.10.254	Dynamic	Disabled
management	200	10.10.200.254	Static	Enabled
virtual	N/A	192.0.2.1	Static	Not Supported
vlan-1010	1010	10.1.0.9	Dynamic	Disabled
vlan-233	255	10.10.255.254	Dynamic	Disabled
vlan-700	700	10.15.0.202	Dynamic	Disabled
vlan-800	800	10.10.80.3	Dynamic	Disabled
vlan-900	900	10.10.90.5	Dynamic	Disabled
vlan-991	991	10.10.91.5	Dynamic	Disabled
vlan-992	992	10.10.92.5	Dynamic	Disabled
vlan-993	993	10.10.93.5	Dynamic	Disabled
vlan-994	994	10.10.94.5	Dynamic	Disabled
vlan-995	995	10.10.95.5	Dynamic	Disabled
vlan-996	996	10.10.96.5	Dynamic	Disabled
vlan-997	997	10.10.97.5	Dynamic	Disabled
vlan-998	998	10.10.98.5	Dynamic	Disabled
vlan-999	999	10.10.99.5	Dynamic	Disabled

```
!
interface GigabitEthernet1/0/14
Description "Wireless LAN Controller"
switchport trunk allowed vlan 200,255,990-999
switchport mode trunk
spanning-tree portfast trunk
!
```

Which cause of the issue is true?

- A. The spanning-tree portfast trunk command must be removed.
- B. The switchport mode must be configured as access.

- C. The interface group has incorrect mappings.
- D. The trunk port does not have the correct VLANs allowe

Answer: D

NEW QUESTION 79

Which statement about the process of rogue containment performed on a rogue AP and rogue clients is true?

- A. Trusted clients are configured to ignore the rogue AP so that only the rogue clients can connect.
- B. An RF jammer is used to prevent the rogue AP from transmitting.
- C. An authorized AP spoofs de-authentication packets that have the spoofed source address of the rogue AP.
- D. A trusted AP is configured to mimic the rogue AP and to prevent clients from associating to the rogue AP.

Answer: C

NEW QUESTION 80

An engineer is troubleshooting a DHCP configuration that is being used to discover two WLCs with the IP addresses of 192.168.10.10 and 192.168.10.11. Which string is used for configuration?

- A. option 80 hex f108.c0a8.0a0A.c0a8.0a0b
- B. option 60 ip 192.168.10.10 192.168.10.11
- C. option 43 ip f108.c0a8.0a0A.c0a8.0a0b
- D. option 43 hex f108.c0a8.0a0A.c0a0b

Answer: D

NEW QUESTION 83

After you perform a post-installation RF survey for a customer with ID 339696181, you discover that all areas have at least -67 dBm RSSI, 25 dB SNR, and 10 percent cell overlap. The customer, however, reports one-way audio issues on VoWLAN phones. Which option is a possible cause of the issue?

- A. The cell overlap is too low.
- B. There are coverage black spots.
- C. Non Wi-Fi interference causes a high noise floor.
- D. The RSSI is too hig

Answer: D

NEW QUESTION 88

You recently deployed an 802.11ac wireless network that contains Cisco Unified Wireless IP Phones 7925G. Users report that the phones intermittently lose connectivity. Which troubleshooting step is the first you must take if you are using the bottom-up troubleshooting methodology?

- A. Review the Cisco WLC log files for authentication failures.
- B. Use a packet sniffer to capture 802.22 frames.
- C. Perform an RF site survey.
- D. Compare the Cisco IOS version of the controller and the phones.

Answer: C

NEW QUESTION 89

You are troubleshooting an AP that fails to join a WLC. Which step of the DTLS handshake is first when establishing a secure CAPWAP connection?

- A. ServerHello
- B. HelloVerifyRequest
- C. Server-ChangeCipherSpec
- D. ClientHello

Answer: D

NEW QUESTION 91

Clients are maintaining association to access points that they were previously connected to rather than roaming to adjacent access points with higher received signal strength. Which two actions can be taken to fix this issue? (Choose two.)

- A. Set DCA channel sensitivity to low.
- B. Utilize Rx-SOP.
- C. Increase access point power.
- D. Enable optimized roaming.
- E. Add access points to the are

Answer: AD

NEW QUESTION 94

Which three components are needed to identify the zone of impact for non-802.11 sources of 2.4 GHz and 5.0 GHz interference? (Choose three.)

- A. WLC
- B. MSE
- C. RF site survey tool
- D. Wi-Fi analyzer
- E. CleanAir AP
- F. spectrum analyzer

Answer: CEF

NEW QUESTION 98

You detect a coverage hole in some part of the network. After troubleshooting, you find out that the Cisco 3702i AP is not using all of its transmission power, and hence is not using the 4x4 spatial stream. Which cause of the problem is true?

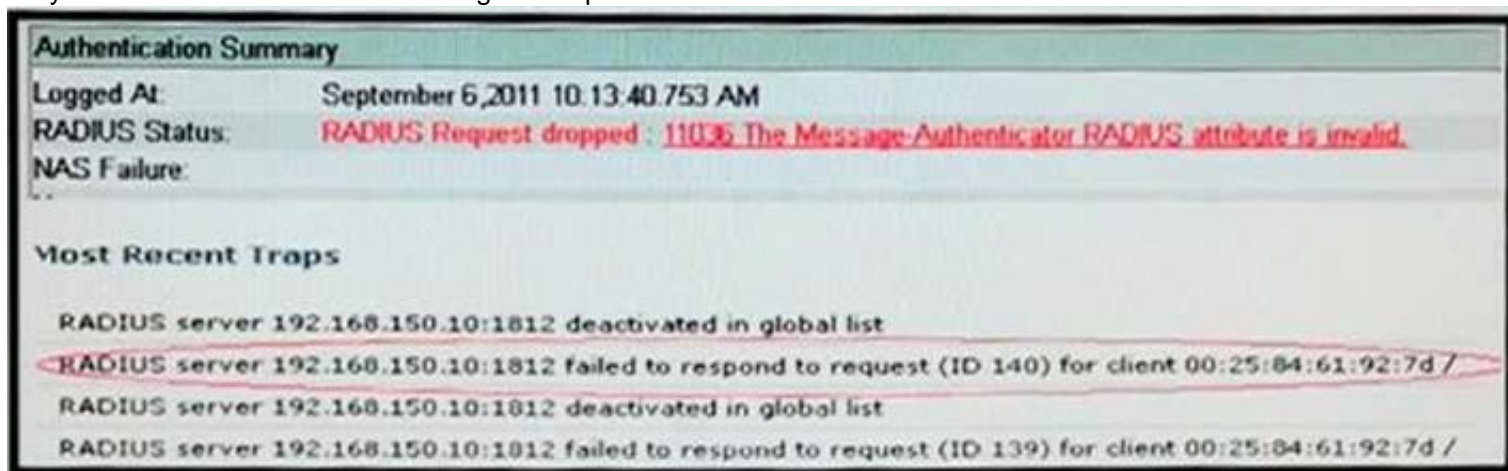
- A. The upstream switch is not PoE-capable.
- B. The AP antennas have been damaged.
- C. The AP is not 4x4-capable.
- D. The PoE source is not injecting the adequate quantity of power

Answer: D

NEW QUESTION 99

Refer to the exhibit.

Why did Client 00:25:84:61:92:7d not get a response from the RADIUS server?

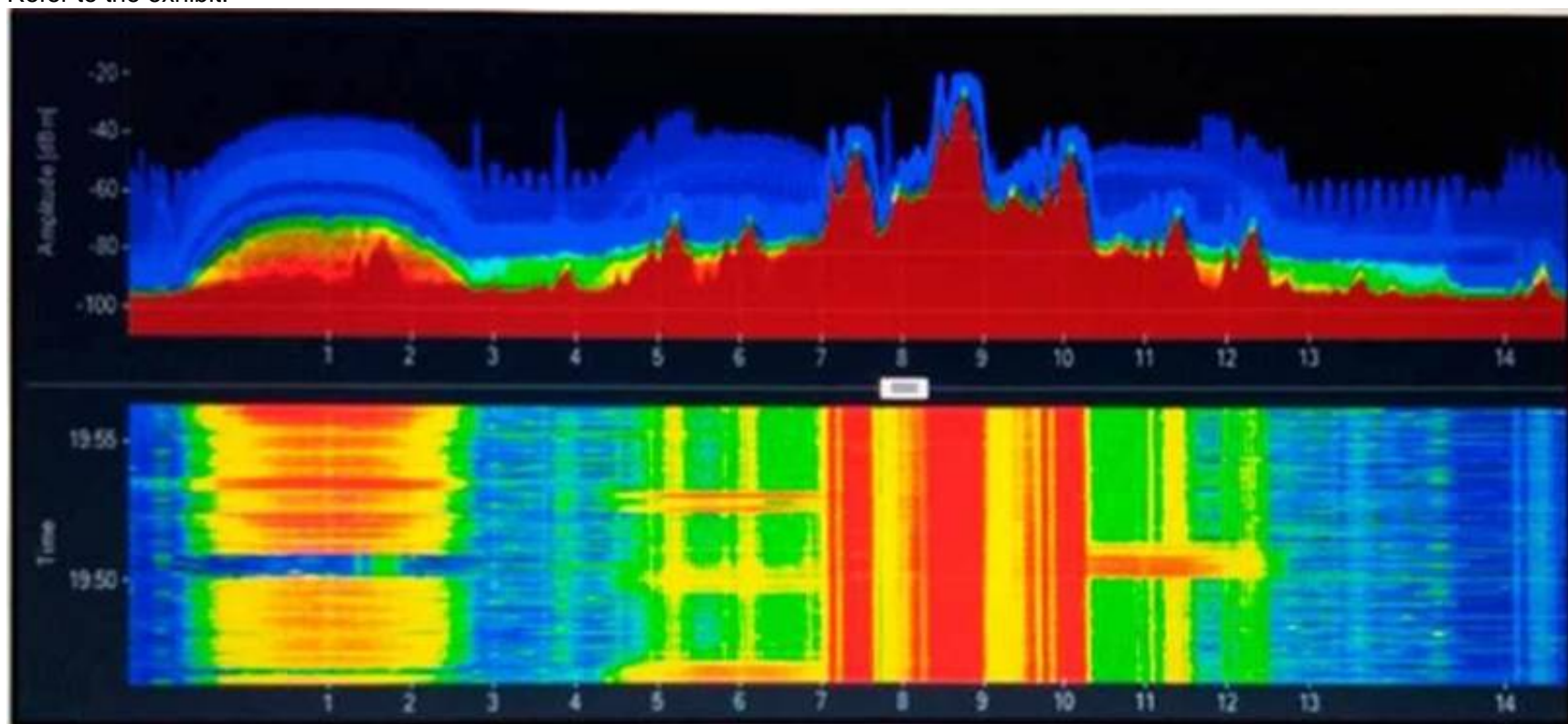


- A. The RADIUS server rejected the username that was provided by the client.
- B. The shared-secret keys on the controller and on the RADIUS server do not match.
- C. The wireless controller does not have IP connectivity to the RADIUS server.
- D. The client and the RADIUS server did not agree on the EAP type so the RADIUS server dropped the packet.

Answer: B

NEW QUESTION 103

Refer to the exhibit.



An engineer is troubleshooting non-802.11 interference and observes the shown output. Which interference signature is depicted?

- A. cordless phone
- B. analog video cameras
- C. microwave oven
- D. FHSS Bluetooth

Answer: B

NEW QUESTION 104

An engineer wants to run the Voice Audit tool in PI and wants to be able to verify: that clients will be capable of having static IPs whether or not Call Admission Control is enabled

Which two rules field descriptions must be checked in the report? (Choose two.)

- A. DHCP assignment
- B. CAC: max bandwidth
- C. ACM
- D. DTPC
- E. load-based CAC

Answer: AE

Explanation:

/Reference:

Reference: [https://www.cisco.com/c/en/us/td/docs/net_mgmt/prime/infrastructure/3-2/reference/guide/](https://www.cisco.com/c/en/us/td/docs/net_mgmt/prime/infrastructure/3-2/reference/guide/pi_ref.pdf)

pi_ref.pdf

NEW QUESTION 109

You are troubleshooting an AP joining issue. You have captured the CAPWAP join request sent from the AP to the controller. Which information do you export?

- A. MAC address of the AP that issues the join request
- B. version of the controller
- C. AP broadcast domain
- D. name of the controller that issues the joining request

Answer: A

NEW QUESTION 113

An engineer ran the debug packet logging enable all command, but only 25 packets are shown and none from the client the engineer wants to see.

Which command helps find data that is specific to the client?

- A. debug packet logging enable rx
- B. debug packet logging acl lwapp-ip
- C. debug packet logging enable format
- D. debug packet logging acl ip

Answer: B

NEW QUESTION 118

Wireless users encounter choppy VoVLAN on one floor of a building. Which troubleshooting approach will determine the cause of the issue in the least amount of time?

- A. move the problem
- B. top down
- C. shoot from the hip
- D. bottom up

Answer: A

NEW QUESTION 119

A post-deployment wireless survey identifies a roaming issue in the main corridor of a hospital. Which action do you take to mitigate the issue?

- A. Enable RSSI Low Check on the WLC
- B. Disable RRM on the WLC
- C. Change the AP channels in the area.
- D. Enable CleanAir on the WLC

Answer: D

NEW QUESTION 120

An engineer uses the shutdown and no shutdown commands on a switch port that an access point is connected to because the AP had disassociated. These commands usually resolve the issue.

Which troubleshooting methodology does this demonstrate?

- A. bottom-up
- B. top-down
- C. divide and conquer
- D. shoot from the hip

Answer: D

NEW QUESTION 124

.....

Thank You for Trying Our Product

* 100% Pass or Money Back

All our products come with a 90-day Money Back Guarantee.

* One year free update

You can enjoy free update one year. 24x7 online support.

* Trusted by Millions

We currently serve more than 30,000,000 customers.

* Shop Securely

All transactions are protected by VeriSign!

100% Pass Your 300-370 Exam with Our Prep Materials Via below:

<https://www.certleader.com/300-370-dumps.html>