

300-170 Dumps

DCVAI Implementing Cisco Data Center Virtualization and Automation (DCVAI)

<https://www.certleader.com/300-170-dumps.html>



NEW QUESTION 1

Which type of server is needed to provide POAP with a configuration script?

- A. DHCP
- B. SCP
- C. FTP
- D. TFTP

Answer: D

NEW QUESTION 2

You have a VSM that experiences a failure. Which two options are results of the failure? (Choose two)

- A. CLI access to the virtual switch continues to work without any interruption
- B. VEM stops working
- C. Traffic forwarding stops for a short period of time and then continues to work normally
- D. Traffic forwarding continues to work without any interruption
- E. VMware vMotion stops working

Answer: BE

NEW QUESTION 3

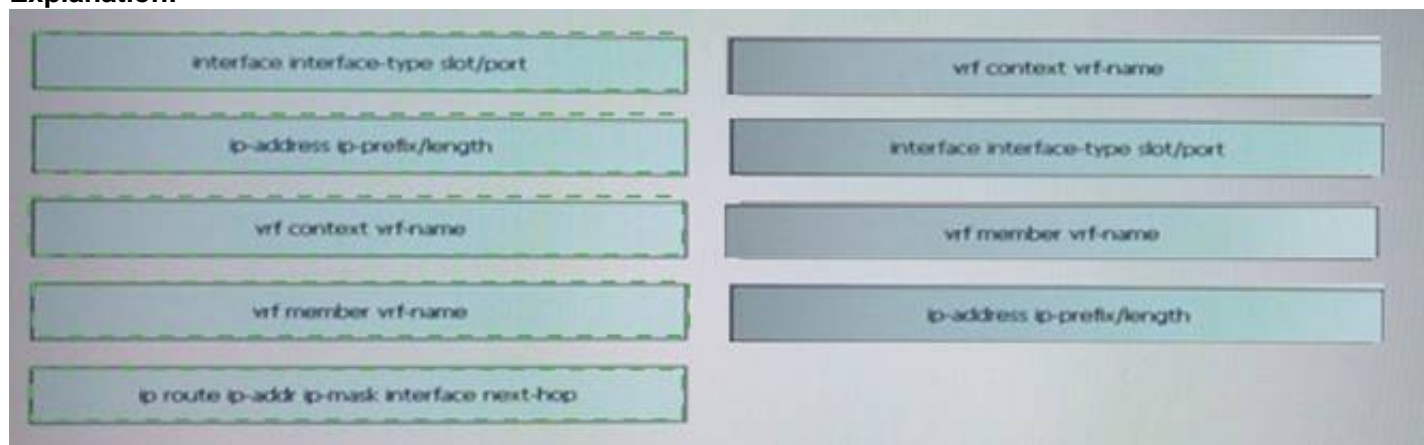
You need to create and configure a VRF for IP forwarding on a Cisco Nexus Series Switch running in NX-OS. Drag and drop the configuration steps from the left into the correct order on the right. Not all options are used.



- A. Mastered
- B. Not Mastered

Answer: A

Explanation:



NEW QUESTION 4

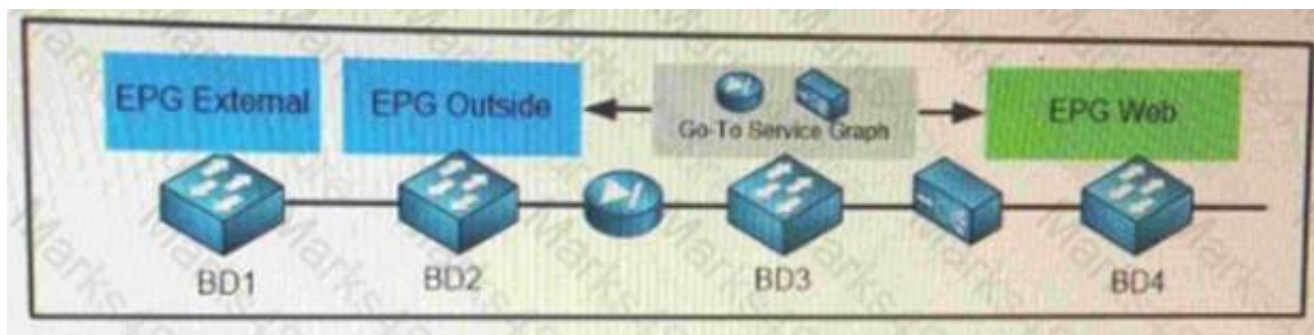
Which two Cisco UCS components require drivers? (Choose two)

- A. FNIC
- B. BIOS
- C. CIMC
- D. board controller
- E. ENIC

Answer: AE

NEW QUESTION 5

Refer to Exhibit.



In which bridge domain does enabling hardware proxy have the greatest benefit?

- A. BD1
- B. BD2
- C. BD3
- D. BD4

Answer: D

NEW QUESTION 6

You configure a Cisco Nexus device running in ACI mode to use a remote RADIUS server Which description of this configuration is true?

- A. If RADIUS authentication fails, the user is denied access without any additional authentication checks.
- B. If the RADIUS server is unreachable, the device falls back to the local authentication automatically
- C. If the RADIUS server is unreachable, users who have been authenticated recently can log in
- D. If RADIUS authentication fails, the device falls back to the local authentication automatically

Answer: D

NEW QUESTION 7

Which statement about RBAC user roles on a Cisco Nexus switch is true?

- A. If a user belongs to two roles, a permit access in one role takes priority over a deny access in the other role
- B. The predefined roles can be changed by the network-admin
- C. If a user belongs to two roles, the user can execute only the commands that are permitted by both of the roles
- D. On a Cisco Nexus 7000 Series Switch, roles are shared between VDCs

Answer: A

NEW QUESTION 8

Refer to the Exhibit.

```
>>> from cli import *
>>> cli("configure terminal ; interface ethernet 1/2")
..
>>> r = cli('show detail') ; print r
mode:
username:          guest
vdc:               ADMIN
routing-context vrf: default
>>>
```

Which scripting tool do you use to create the script?

- A. Python-API
- B. Bash
- C. NX-API
- D. Broadcom Shell

Answer: A

NEW QUESTION 9

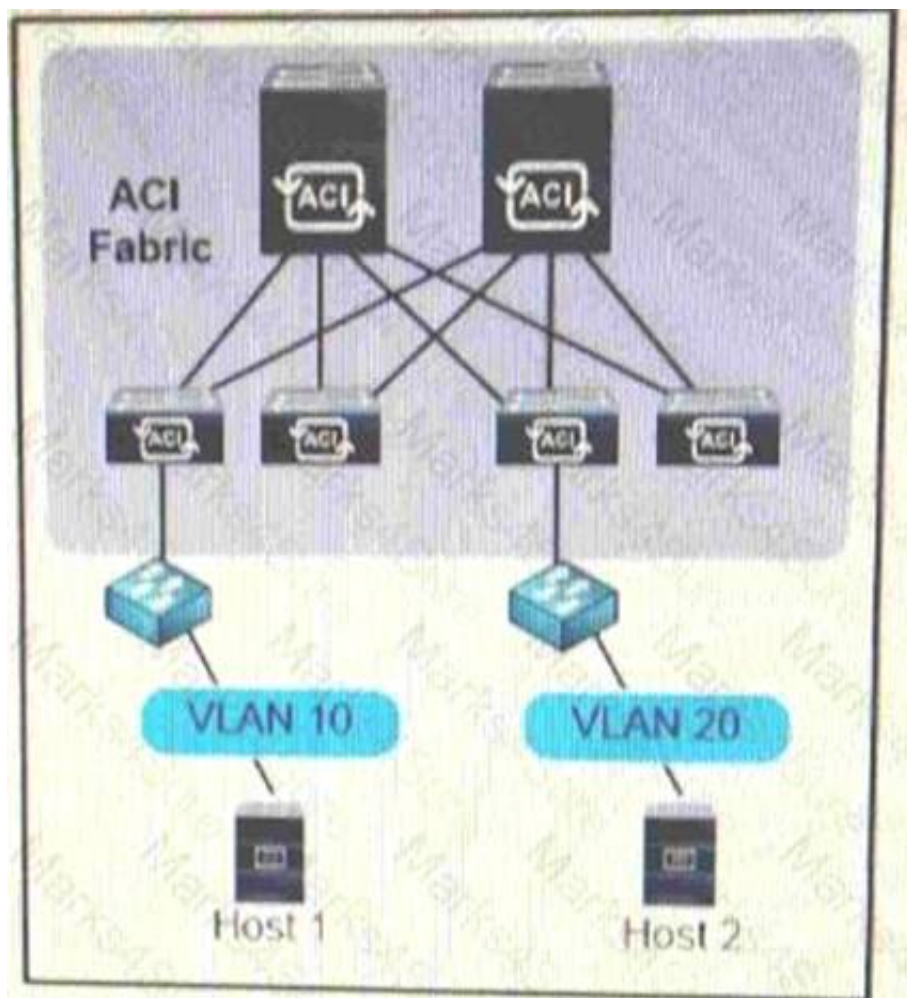
The behavior of which packet type can be controlled by selecting unicast mode or flood mode in a bridge domain?

- A. ARP
- B. unknown unicast
- C. LLDP
- D. CDP

Answer: B

NEW QUESTION 10

Refer to the exhibit.



Which action do you take to ensure that both endpoints are within the same subnet?

- A. Stitch the two VLANs by using an attachable entity profile.
- B. Normalize the encapsulation by using the Same bridge domain.
- C. Normalize the encapsulation by using the same VRF
- D. Stitch the two VL ANs by using an application network profile.

Answer: A

NEW QUESTION 10

Which option must be defined to apply a configuration across a potentially large number of switches in the most scalable way?

- A. a configuration policy
- B. a group policy
- C. an interface policy
- D. a switch profile

Answer: D

NEW QUESTION 11

You have a Cisco Nexus 1000V Series Switch. When must you use the system VLAN?

- A. to use VMware vMotion
- B. to perform an ESXi iSCSI boot
- C. to perform a VM iSCSI boot
- D. to perform an ESXi NFS boot

Answer: A

NEW QUESTION 15

Which action occurs first when a device that has the POAP feature boots and cannot find the startup configuration?

- A. The device locates a DHCP server
- B. The device enters POAP mode
- C. The device obtains the IP address of a TFTP server
- D. The device installs software image and a configuration file

Answer: B

Explanation:

PowerOn Auto Provisioning (POAP) automates the process of upgrading software images and installing configuration files on devices that are being deployed in the network for the first time. When a device with the POAP feature boots and does not find the startup configuration, the device enters POAP mode, locates a DHCP server, and bootstraps itself with its interface IP address, gateway, and DNS server IP addresses. The device also obtains the IP address of a TFTP server or the URL of an HTTP server and downloads a configuration script that enables the switch to download and install the appropriate software image and configuration file

NEW QUESTION 18

You have a server that has a Cisco UCS CNA. A service profile that has a vNIC and a vHBA is mapped to fabric A. The vNIC is configured to use VLAN 10. VLAN 10 is the native VLAN for the vNIC. The vHBA is configured to use VSAN 2. Which description of the configuration is true?

- A. VSAN 3 can be configured by using VLAN 10 as the FCoE VLAN ID
- B. VSAN 2 can read traffic on VLAN 5.
- C. VLAN 10 and VSAN 2 must use the same ID
- D. VSAN 2 can be mapped to other VLANs in fabric A.

Answer: A

NEW QUESTION 20

When configuring port profiles on a Cisco Nexus 5000 Series switch, which two statements are true? (Choose two.)

- A. If a conflict occurs when a range of interfaces inherits a second port profile, the commands of the initial port profile override the commands of the second port profile.
- B. If a conflict occurs, commands that you enter the interface mod take precedence over profile commands.
- C. When an interface has a port profile applied to it, no other conflicting configuration can be applied to that interface.
- D. If a conflict occurs when a range of interface inherits a second port profile, the commands of the second ort profile override the commands of the initial port profile.
- E. If a conflict occurs, port profile takes precedence over commands that you enter under the interface mode.

Answer: BD

NEW QUESTION 21

You must apply a contract to all of the EPGs in a tenant. The solution must ensure that the contract is also applied to any new EPGs that are added to the tenant. Which option must you uses?

- A. the QUI
- B. the vzAny managed object
- C. the REST API
- D. a Python script

Answer: B

NEW QUESTION 23

Which Cisco APIC health score will be affected if an EPG does not have a Bridge Domain associated with it ?

- A. spine health
- B. leaf health
- C. tenant health
- D. pod health

Answer: C

Explanation:

http://www.cisco.com/c/en/us/td/docs/switches/datacenter/aci/apic/sw/1-x/Operating_ACI/guide/b_Cisco_Operating_ACI/b_Cisco_Operating_ACI_chapter_01010.pdf

NEW QUESTION 25

You must define a workload using Cisco UCS Manager. Drag and drop the workload definition task from the left into the correct order on the right.

Configure a server policy.	step 1
Configure a service profile template.	step 2
Configure the adapters.	step 3
Define an organizational hierarchy.	step 4
Define the pools.	step 5

- A. Mastered
- B. Not Mastered

Answer: A

Explanation:

Step 1 —define org hie
Step2 —define pools
Step 3 —configure adap
Step 4—configure server policies
Step 5—configure server profiles temp

NEW QUESTION 30

A host connected to a leaf switch sends an ARP request. By default, what does the ingress switch do with the ARP requests?

- A. Suppress the ARP
- B. Send the ARP by using unicast.
- C. Send the ARP by using a broadcast
- D. Send the ARP by using multicast

Answer: C

NEW QUESTION 32

Which feature of a Cisco Nexus 1000V Servers Switch allows you to deploy traffic steering for a virtual infrastructure?

- A. SOT
- B. PVLAN
- C. ACL
- D. vPath

Answer: D

NEW QUESTION 36

Which feature allows firewall ACLs to be configured automatically when new endpoints are attached to an EPG?

- A. ARP network gleaning
- B. network stitching
- C. dynamic endpoint attach
- D. hardware proxy

Answer: C

NEW QUESTION 38

When you perform a task in the Cisco APIC GUI, the GUI creates and sends internal API messages to the operating system to execute the task. Which Cisco tool enables you to view and copy these API messages?

- A. API Inspector
- B. syslog
- C. SNMP
- D. Postman
- E. SPAN
- F. EPG listener

Answer: A

NEW QUESTION 41

Which description of the Visore tool is true?

- A. It reports the current managed object in the bottom left hand corner of the GUI windows.
- B. It is a tool within USC Director that allows the user to view the endpoint database.
- C. It is an object store that exists on the APIC which can directly query the managed objects.
- D. It is a tool used to report API calls that are made by the GUI to the APIC.

Answer: C

NEW QUESTION 45

Which two options are benefits of using the configuration synchronization feature? (Choose two)

- A. It supports the feature command
- B. It supports existing session and port profile functionality
- C. It can be used by any Cisco Nexus switch
- D. It merges configurations when connectivity is established between peers
- E. It supports FCoE in vPC topologies

Answer: BD

NEW QUESTION 46

Which option are L4-L7 devices registered as on a Cisco APIC?

- A. one virtual device
- B. a cluster
- C. one physical device
- D. more virtual devices

Answer: B

NEW QUESTION 47

You have a new Cisco Nexus 7000 Series Switch that has only the default VDC configured .Which option describes the default behavior of the physical interfaces on the switch?

- A. The physical ports are divided into eight groups and the first group is assigned to the default VDC
- B. All of the physical ports on the switch are assigned to the default VDC
- C. None of the physical ports on the switch are assigned
- D. The physical ports are divided into six groups and the first group is assigned to the default VDC

Answer: C

NEW QUESTION 51

You have a Cisco Nexus Series Switch. Which two descriptions of how incoming packets are handled by the VRF instance are true? (Choose two)

- A. The route policy defines which VRF that Cisco NX-OS uses for incoming packets
- B. By default, Cisco NX-OS uses the VRF of the outgoing interface
- C. The policy in the management VRF defines which VRF that Cisco NX-OS uses for incoming packets
- D. By default Cisco NX-OS uses the VRF of the incoming interface
- E. The policy in the default VRF defines which VRF that Cisco NX-OS uses for incoming packets

Answer: BD

NEW QUESTION 52

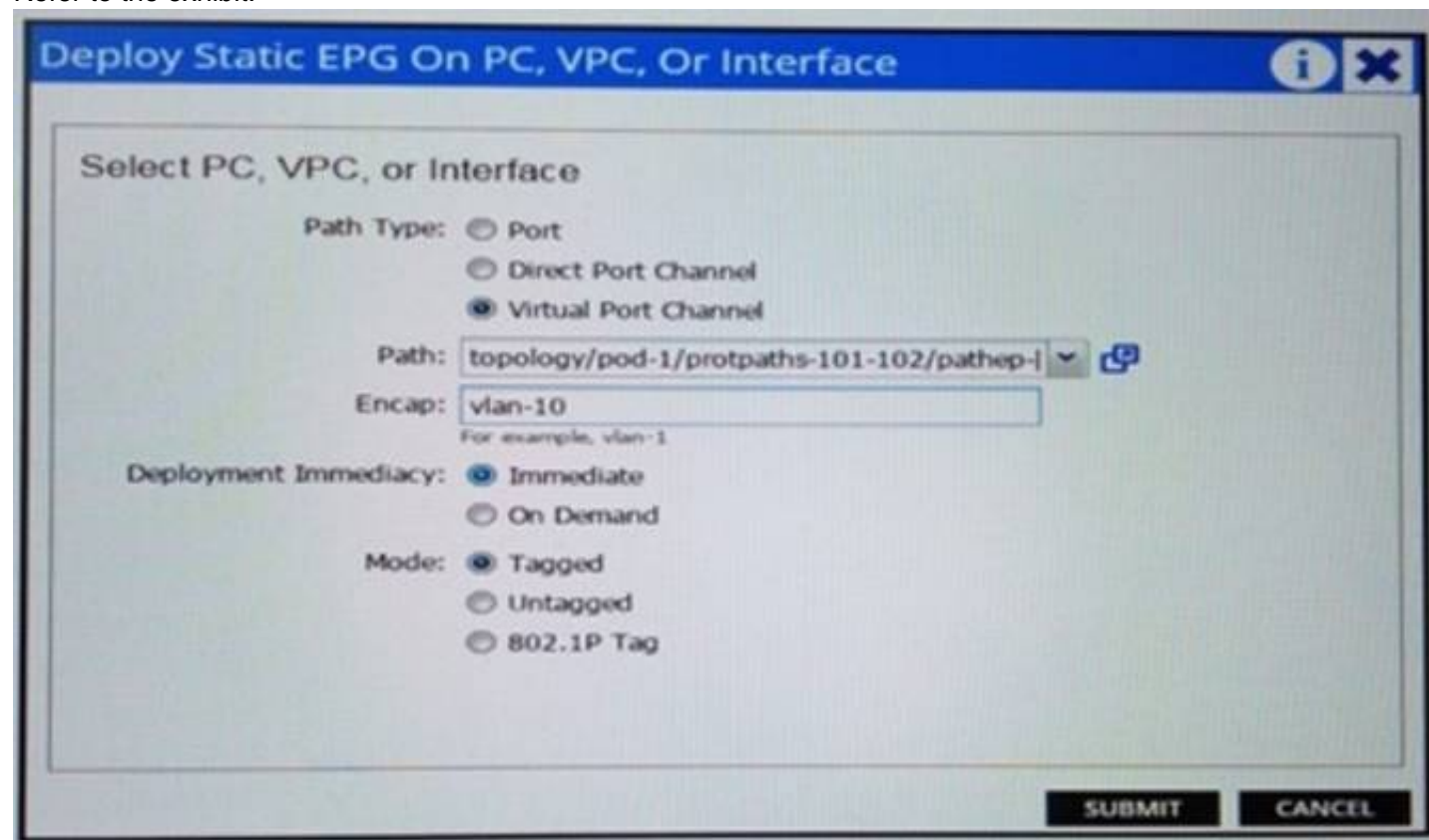
Which statement describes how to deploy an access policy?

- A. The access policy must be created on the leaf and then pushed to the spine.
- B. The access policy must be created on the Cisco APIC and then pushed to a leaf
- C. The access policy must be created on the Cisco APIC and then pushed to the spine
- D. The access policy must be created on the spine and then pushed to a leaf.

Answer: B

NEW QUESTION 54

Refer to the exhibit:



You perform the configuration as shown in the exhibit Which two additional tasks must you perform to deploy EPG on PC . VPC . or Interface? (Choose two)

- A. Add the border leaf node to the Layer 2 outside connection
- B. Create an Attachable Access Entity Profile
- C. Create a Layer 2 outside connection
- D. Create a physical domain and a VLAN pool for the physical domain, and associate the physical domain to the EPG WEB
- E. Extend the VLAN represented by EPG out pi the Cisco ACI fabric

Answer: BD

NEW QUESTION 59

At the bash prompt, you run the bash\$ source environment-setup-x86_64-wrs-linux command. Which purpose of running this command is true?

- A. to set up the source for the plugins added to the shell environment
- B. to move the build application to the target switch
- C. to prepare the environment for the SDK installation
- D. to add SDK-specific paths to the shell environment during environment initialization

Answer: D

NEW QUESTION 64

Which situation causes POAP to auto provision a switch?

- A. The startup configuration is corrupt.
- B. The switch is powered on after being offline for more than 48 hours.
- C. The startup configuration is missing. The startup configuration is corrupt, and you manually rebooted the switch

Answer: C

NEW QUESTION 65

You have an external switch that runs STP. An interface connected to the switch generates a loop_ inc error. Which feature do you enable on the Cisco ACI fabric to resolve the issue?

- A. LACP
- B. MSTP
- C. BPDU filter
- D. PortFast

Answer: C

NEW QUESTION 69

Which two benefits come from using a Cisco Nexus 7000 Series Switch in VDC mode? (Choose two)

- A. par-VDC kernel resource allocation
- B. per-VDC administration
- C. per-VDC load balancing for Cisco Ether Channel
- D. per-VDC forwarding information base
- E. per-VDC fault isolation

Answer: BE

NEW QUESTION 74

Which type of discovery is used in the Cisco ACI fabric for automatic discovery?

- A. ACI
- B. Cisco APIC
- C. DHCP
- D. LLDR

Answer: D

NEW QUESTION 77

When you provision a VDC, which command is used in VDC configuration mode?

- A. vrf context- <vrf name>
- B. boot-order <number>
- C. vdc resource template <vdc template name>
- D. vdc combined-hostname

Answer: B

NEW QUESTION 81

A unicast packet enters into the front panel port of a leaf switch. The leaf switch performs a forwarding lookup for the packet destination IP address and has a miss result. Assuming default configuration, which statement about what happens next is true?

- A. The packet is sent to the forwarding proxy in the spine switch
- B. The packet is dropped on the leaf switch
- C. The packet is sent to another leaf switch within the same bridge domain
- D. The packet is flooded across the entire fabric because it is an unknown unicast.

Answer: A

NEW QUESTION 84

A system administrator checks the endpoint database and discovers MAC addresses that belong to inactive local nodes. Which description of the retention of the MAC addresses for the local nodes is true?

- A. After five minutes, the inactive nodes are removed from the local endpoint database of the leaf
- B. The local database is cleared only when the leaf reboots
- C. The leaf sends three ARP requests after an aging period
- D. The MAC addresses are stored to the local endpoint database as long as the devices respond to the requests
- E. After 15 minutes, the inactive nodes are removed from the local endpoint database of the leaf

Answer: A

NEW QUESTION 85

You create a dynamic VLAN pool to be used for Virtual Machine Manager integration On which two other components must you ensure the VLANs in the pool are allowed? (Choose two)

- A. AVS
- B. Cisco Nexus 1000V
- C. the intermediate switch
- D. vS witch
- E. the Cisco UCS blade system

Answer: BD

NEW QUESTION 90

Which protocol is used to communicate endpoint mapping information to the spine proxy?

- A. COOP
- B. LLDP
- C. OpFlex
- D. IS-IS

Answer: A

NEW QUESTION 92

.....

Thank You for Trying Our Product

* 100% Pass or Money Back

All our products come with a 90-day Money Back Guarantee.

* One year free update

You can enjoy free update one year. 24x7 online support.

* Trusted by Millions

We currently serve more than 30,000,000 customers.

* Shop Securely

All transactions are protected by VeriSign!

100% Pass Your 300-170 Exam with Our Prep Materials Via below:

<https://www.certleader.com/300-170-dumps.html>