

Exam Questions 101-01

Riverbed Certified Solutions Associate

<https://www.2passeasy.com/dumps/101-01/>



NEW QUESTION 1

- (Exam Topic 1)

Which of the following local accounts are available by default on a Steelhead appliance? (Select 2)

- A. admin
- B. riverbed
- C. monitor
- D. rvbd
- E. root

Answer: AC

NEW QUESTION 2

- (Exam Topic 1)

Some applications are designed to open many TCP connections to accomplish required data transfers. Many of these connections are short-lived, yet each requires significant overhead to initiate communications. What RiOS feature was designed to reduce the overhead of these short-lived TCP connections?

- A. HSTCP
- B. MX-TCP
- C. Virtual Window Expansion
- D. Connection Pooling
- E. Transport Streamlining

Answer: D

NEW QUESTION 3

- (Exam Topic 1)

Application Streamlining in a Steelhead appliance or Steelhead Mobile does what?

- A. Reduces round trips over the WAN for all TCP traffic
- B. Reduces round trips over the WAN for supported applications
- C. Gives applications priority using our QoS engine
- D. All of the above

Answer: B

NEW QUESTION 4

- (Exam Topic 1)

Which of the following are considered to be root causes of poor application performance over wide area networks? (Select 3)

- A. Application protocol chattiness
- B. Transport protocol inefficiencies
- C. Proxy ARP
- D. Insufficient bandwidth
- E. Daylight Savings Time settings

Answer: ABD

NEW QUESTION 5

- (Exam Topic 1)

Which of the following factors are important to consider when sizing a Steelhead appliance? (Select 3)

- A. Number of simultaneous optimized connections
- B. The maximum optimized WAN bandwidth
- C. The size of datastore
- D. The number of applications used by the enterprise

Answer: ABC

NEW QUESTION 6

- (Exam Topic 1)

Which trunking protocols are supported by the Steelhead appliance?

- A. 802.1Q
- B. 802.1P
- C. 802.1AD
- D. Dynamic Etherchannel

Answer: A

NEW QUESTION 7

- (Exam Topic 1)

When MAPI prepopulation is enabled, what is default TCP keep-alive time used to prepopulate the Steelhead appliance with emails and attachments?

- A. 24 hours

- B. 48 hours
- C. 72 hours
- D. 96 hours

Answer: D

NEW QUESTION 8

- (Exam Topic 1)

Application Streamlining supports which of the following protocols in the Steelhead appliance?

- A. HTTP, FTP, MAPI, NFS
- B. MAPI, CIFS, NFS v4
- C. CIFS, RDP, MAPI, HTTP, SSL, Oracle, MAC-CIFS, ICA, UDP
- D. HTTP, MAPI, NFS v3, CIFS, Lotus Notes, MS-SQL

Answer: D

NEW QUESTION 9

- (Exam Topic 1)

Which of the following management or monitoring methods are supported by the Steelhead appliance? (Select 4)

- A. SNMP / SNMP traps
- B. Email notification
- C. HP Open View Console plug-in available on Riverbed support site
- D. Central Management Console
- E. Syslog

Answer: ABDE

NEW QUESTION 10

- (Exam Topic 1)

Which forms of administrative authentication are supported by the Steelhead appliances?:(Select 3)

- A. NTLM
- B. TACACS+
- C. RADIUS
- D. Kerberos
- E. Local username and password

Answer: BCE

NEW QUESTION 10

- (Exam Topic 1)

With branch warming enabled, new data transferred between the Steelhead Mobile client and a server will be populated into: (Select 3)

- A. The Steelhead Mobile client datastore
- B. The local office Steelhead appliance datastore
- C. The server-side Steelhead appliance datastore
- D. Datastore will not be populated
- E. The Steelhead Mobile Controller datastore

Answer: ABC

NEW QUESTION 15

- (Exam Topic 1)

Which of the following MAPI application-specific optimizations can be performed by Steelhead appliances?

- A. Read ahead on attachments
- B. Read ahead on large emails
- C. Write behind on attachments
- D. Write behind on large emails
- E. All of the above

Answer: E

NEW QUESTION 18

- (Exam Topic 1)

After deployment of Steelhead appliances, a certain backup application shows poor bandwidth reduction. After disabling the backup application's native compression algorithm, the bandwidth reduction statistics on the Steelhead appliances suddenly improve significantly. Which of the following are likely causes for the increased bandwidth reduction?

- A. The native compression algorithm of the backup application could not be compressed further
- B. The application-level protocol used by the backup application is not recognized by the Steelhead appliances
- C. The Steelhead appliances were not able to effectively perform TCP optimizations
- D. There should be no difference between compressed and uncompressed traffic

Answer: A

NEW QUESTION 22

- (Exam Topic 1)

A user downloads a Microsoft PowerPoint presentation from a server across the network. The file has been seen before by both Steelhead appliances that are optimizing the link and so the user experiences warm performance. A second user at the same office has a local copy and adds some pictures then uploads the very same file. This file transfer can be considered:

- A. Cold, the data now travels in another direction so the Steelhead appliance needs to relearn the data
- B. Cold, the file has been changed to the file needs to be stored again
- C. Warm, all the data has been seen by the Steelhead appliances before
- D. Warm, the transaction prediction module of the Steelhead appliance can detect the application and accelerate the transfer
- E. Partially warm, the Steelhead appliances only need to learn the new data

Answer: E

NEW QUESTION 26

- (Exam Topic 1)

What are valid WAN visibility modes of the Steelhead appliance? (Select 3)

- A. Correct Addressing
- B. Port Transparency
- C. Full Addressing
- D. Full Transparency
- E. Transparency

Answer: ABD

NEW QUESTION 30

- (Exam Topic 1)

Which of the following database applications can the Steelhead appliance optimize with the Application Streamlining module?

- A. IBM DB2
- B. Sybase
- C. MySQL
- D. Microsoft SQL
- E. Great Plains

Answer: D

NEW QUESTION 31

- (Exam Topic 1)

What is the default WAN visibility mode?

- A. Correct Addressing
- B. Port Transparency
- C. Full Addressing
- D. Full Transparency
- E. Transparency

Answer: A

NEW QUESTION 32

- (Exam Topic 1)

How can I obtain Virtual Steelhead appliance license keys?

- A. Using the Riverbed public support site
- B. Contacting VMware
- C. Virtual Steelhead appliance license keys are included in the install package
- D. Base licenses are not required
- E. Only SSL licenses are not included

Answer: A

NEW QUESTION 34

- (Exam Topic 1)

To help secure the server private key on the server-side Steelhead appliance, which of the following features can be used?

- A. TACACS+ authentication
- B. RADIUS authentication
- C. Secure Vault
- D. Datastore encryption

Answer: C

NEW QUESTION 39

- (Exam Topic 1)

Which of the following is a valid type of in-path rule on the Steelhead appliance? (Select 3)

- A. Pass Through
- B. Dynamic Detection
- C. Auto Discover
- D. Fixed-Target
- E. Real-Time

Answer: ACD

NEW QUESTION 44

- (Exam Topic 1)

Which of the following parameters can be used to classify traffic into QoS classes? (Select 3)

- A. Destination subnet
- B. Source subnet
- C. VLAN
- D. WCCP Mask or HASH
- E. Service Groups

Answer: ABC

NEW QUESTION 45

- (Exam Topic 1)

How many WAN visibility modes are available?

- A. 1
- B. 2
- C. 3
- D. 4
- E. 5

Answer: C

NEW QUESTION 47

- (Exam Topic 2)

When deploying a Steelhead appliance in a physical in-path configuration, the cable between the Steelhead and the router should be:

- A. Straight-through
- B. Crossover
- C. Token Ring
- D. None of the above

Answer: B

NEW QUESTION 49

- (Exam Topic 2)

Which of the following Steelhead appliance models support field replaceable disk drives? (Select 3)

- A. 250
- B. 2050
- C. 6050
- D. 5050

Answer: BCD

NEW QUESTION 51

- (Exam Topic 2)

In a Steelhead Mobile deployment, what are Endpoint policies? (Select 2)

- A. Templates that allow Steelhead Mobile clients to connect to Steelhead appliances
- B. Configuration templates to configure groups of Steelhead Mobile clients that have the same configuration requirements
- C. Configuration templates to configure groups of Steelhead Mobile clients that have the same datastore requirements
- D. Configuration templates to configure computer-specific software settings on a Linux system
- E. Steelhead Mobile client software default access policies used to connect to all Riverbed devices

Answer: BC

NEW QUESTION 56

- (Exam Topic 2)

What transaction prediction modules are supported on the Steelhead Mobile client? (Select 3)

- A. CIFS
- B. WCCP
- C. MAPI
- D. ATP
- E. Lotus Notes

Answer: ACE

NEW QUESTION 59

- (Exam Topic 2)

When implementing PBR, a Steelhead appliance is connected to the router using which Steelhead appliance interface?

- A. lan0_0
- B. wan0_0
- C. Primary
- D. AUX
- E. Remote

Answer: B

NEW QUESTION 61

- (Exam Topic 2)

Using an Interceptor appliance is an alternative to what network designs? (Select 2)

- A. WCCP
- B. PBR
- C. Connection Forwarding
- D. Fixed-target rules
- E. Peering rules

Answer: AB

NEW QUESTION 63

- (Exam Topic 2)

Which xx50 Steelhead appliance models provide both inpath0_0 and inpath0_1 interfaces without adding additional network cards? (Select 3)

- A. Steelhead 550
- B. Steelhead 6050
- C. Steelhead 1050
- D. Steelhead 250
- E. Steelhead 2050

Answer: BCE

NEW QUESTION 65

- (Exam Topic 2)

The Central Management Console (CMC) provides the following:

- A. Rapid deployment of distributed Steelhead appliances
- B. Simplifies ongoing configuration and management of distributed Steelhead appliances
- C. Health monitoring of distributed Steelhead appliances
- D. Performance reports of distributed Steelhead appliances
- E. All of the above

Answer: E

NEW QUESTION 70

- (Exam Topic 2)

Login to the CMC appliance can be authenticated against what type servers? (Select 3)

- A. RADIUS
- B. Local
- C. XAUTH
- D. TACACS+
- E. Kerberos

Answer: ABD

NEW QUESTION 74

- (Exam Topic 2)

You need to purchase a Steelhead appliance model for one of your engineering branch offices. Below are the requirements that need to be met:

- ▶ 200 users with 15 TCP connections each
- ▶ 15 Mbps WAN link
- ▶ Will be sending across the WAN about 20 GB of new data daily
- ▶ A Windows 2003 Server and video streaming Riverbed Services Platform (RSP) will be used Which of the following models will be the most appropriate for this branch office?

- A. Steelhead 2050-M
- B. Steelhead 5050-M
- C. Steelhead 550-M
- D. Steelhead 550-H
- E. Steelhead 250-H

Answer: A

NEW QUESTION 79

- (Exam Topic 2)

An employee who has just installed Steelhead Mobile onto her workstation notices that she never gets any reduction. It always says 0%.

The status of the mobile client appears to Be: Optimization State: Firewallled

Controller Status: Connected

The reason she is seeing 0% reduction statistics is:

- A. Location Awareness is in effect
- B. The physical branch Steelhead appliance in her office is behind a firewall
- C. The office firewall is stripping the IP options field
- D. Her workstation is blocking TCP port 7801
- E. The data center is currently firewalling all optimized connections

Answer: D

NEW QUESTION 83

- (Exam Topic 2)

What platform of VMware enables you to run the Central Management Console as a virtual appliance? (Select 2)

- A. ESX
- B. Desktop
- C. VMX
- D. ESXi
- E. VMDK

Answer: AD

NEW QUESTION 85

- (Exam Topic 2)

It is possible to backup your RSP slots using. (Select 2)

- A. ftp
- B. http
- C. scp
- D. https
- E. tftp

Answer: AC

NEW QUESTION 89

- (Exam Topic 2)

A customer is marking QoS between the Steelhead appliances based on the application (port number) and IP addresses being used. What is the recommended WAN visibility mode?

- A. Tunnel mode
- B. Port Transparency
- C. Full Transparency
- D. SSL mode

Answer: C

NEW QUESTION 93

- (Exam Topic 2)

The Steelhead Mobile client software builds an optimized connection to what end device?

- A. The nearest SMC
- B. A Steelhead appliance
- C. A Central Management Console (CMC)
- D. The VPN concentrator
- E. Another Steelhead Mobile client

Answer: B

NEW QUESTION 98

- (Exam Topic 2)

Which of the following best describes Link State Propagation (LSP)?

- A. LSP is not a Steelhead appliance feature
- B. LSP monitors the LAN/WAN pair and reflects the up/down status
- C. LSP is an enhancement to auto negotiation
- D. LSP is an enhancement to Spanning Tree

Answer: B

NEW QUESTION 100

- (Exam Topic 2)

Steelhead appliance models vary according to which of the following attributes?

1. Number of concurrent TCP connections that can be optimized
2. Amount of disk storage available for Scalable Data Referencing
3. Level of encryption supported
4. Maximum possible in-path interfaces

- A. 1, 2, and 3
- B. 1, 2, and 4
- C. 2, 3, and 4
- D. 1, 3, and 4
- E. 1, 2, 3, and 4

Answer: B

NEW QUESTION 105

- (Exam Topic 2)

When implementing datastore synchronization, a master and backup Steelhead appliance:

1. Must be within 10 ms of latency between the synchronizing Steelhead appliances
2. Must have the same datastore size
3. Must be running the same major version RiOS software
4. Must have the same hostname

- A. 1, 2, and 3
- B. 2 and 3
- C. 2, 3, and 4
- D. 3 and 4
- E. 1, 2, 3, and 4

Answer: A

NEW QUESTION 110

- (Exam Topic 2)

On the Interceptor appliance what is the size of the datastore?

- A. 0 MB
- B. 600 MB
- C. 1.2 TB
- D. 3.6 TB
- E. 4.8 TB

Answer: A

NEW QUESTION 115

- (Exam Topic 2)

Steelhead Mobile licensing is based on what model?

- A. Concurrent usage
- B. Per seat
- C. Hybrid per seat/concurrent usage
- D. Steelhead Mobile does not use a licensing model as long as you do not exceed the capacity of the SMC

Answer: A

NEW QUESTION 116

- (Exam Topic 2)

What Steelhead appliance interface must be connected in order to peer with the Interceptor appliance for optimization?

- A. Primary
- B. WAN
- C. LAN
- D. AUX
- E. Console

Answer: B

NEW QUESTION 117

- (Exam Topic 2)

When implementing WCCP, a Steelhead appliance is connected using which Steelhead appliance interface for optimization?

- A. lan0_0
- B. wan0_0
- C. Primary
- D. AUX
- E. Remote

Answer: B

NEW QUESTION 122

- (Exam Topic 2)

A fat pipe is a network that can carry large amounts of data without significantly degrading transmission speed.

If you have a fat pipe that is not being fully utilized and you are experiencing WAN congestion, latency, and packet loss as a result of the limitations of regular TCP, which of the following RiOS features will help? (Select 2)

- A. Enable Forced Burst TCP (FB-TCP)
- B. Enable HighSpeed TCP (HSTCP)
- C. Disable admission control
- D. Lower the Advanced Security Checkflow Parameter (ASCP)
- E. Enable Maximum TCP (MX-TCP)
- F. Enable disk encryption

Answer: BE

NEW QUESTION 123

- (Exam Topic 2)

What benefit does the Interceptor appliance provide? (Select 3)

- A. Load balances connections across Steelhead appliances
- B. Provides redundancy in case of Steelhead appliance failure
- C. Maintains stateful connection table if a Steelhead appliance fails
- D. Allows clustering of multiple Steelhead appliances

Answer: ABD

NEW QUESTION 125

- (Exam Topic 2)

The key difference between the "Degraded" status and the "Critical" status is:

- A. With degraded, only one alarm has been triggered, whereas with critical, two or more alarms were triggered
- B. With degraded, the Steelhead appliance is still optimizing traffic, whereas with critical the Steelhead may or may not be optimizing
- C. With degraded, there is no optimization due to a software problem, whereas with critical there is no optimization due to a hardware problem
- D. With both degraded and critical, optimization functions as normal however administrator attention is required

Answer: B

NEW QUESTION 127

- (Exam Topic 2)

What are basic components of the Interceptor appliance? (Select 3)

- A. Load Balancing
- B. Redirection
- C. Peer Affinity
- D. Optimization
- E. Store SDR data

Answer: ABC

NEW QUESTION 128

- (Exam Topic 2)

Central Management Console (CMC) provides which benefits? (Select 2)

- A. Centralized reporting of Interceptor appliances
- B. Centralized reporting of Steelhead Mobile Controller appliances
- C. Centralized management of Steelhead appliances
- D. Centralized configuration of Steelhead appliances
- E. Centralized configuration of Cascade Profiler appliances

Answer: CD

NEW QUESTION 132

- (Exam Topic 2)

What is the smallest and largest datastore size one can allocate for a Steelhead Mobile client?

- A. 256 MB and 20 GB on disk
- B. 1 GB and 100 TB on disk
- C. 256 MB and 1 TB in memory
- D. 64 KB and 512 KB in memory
- E. 10% and 50% of the available disk space

Answer: A

NEW QUESTION 133

- (Exam Topic 2)

Which of the following expansion cards are available for the Steelhead appliance xx50 series? (Select 2)

- A. Four-Port Copper Gigabit-Ethernet PCI-E
- B. Four-Port SX Fiber Gig-E PCI-X
- C. Five-Port Copper Gigabit-Ethernet PCI-E
- D. Two-Port SX Fiber Gigabit-Ethernet PCI-E
- E. Three-Port SX Fiber Gig-E PCI-X

Answer: AD

NEW QUESTION 137

- (Exam Topic 3)

When examining SMB connections which are SteelHead optimized, you notice that for each IP client and server pair, there are often two connections created – one on destination port 139 and one on destination port 445. What is the reason for this?

- A. This is because SMB2 and CIFS optimization are both enabled on the SteelHeads.
- B. The server must be ignoring or resetting connections on port 139, so the client tries again on port 445.
- C. The server must be ignoring or resetting connections on port 445, so the client again on port 139.
- D. Clients often try to connect on port 139 and 445 simultaneously for compatibility reason
- E. Once one connection is accepted, the other gets reset.

Answer: D

Explanation:

Clients try to connect to 139 and 445 at the same time. Whatever ports gets the first response will be used for communications.

References: <https://support.riverbed.com/bin/support/static/lrj6rq1evg0nm7pekuq3j2md1/html/vte4p5uj2dkg9k1ukjv82835>

NEW QUESTION 140

- (Exam Topic 3)

Which of the following correctly describe the two topology deployment modes of SteelHead SaaS? (Select two.)

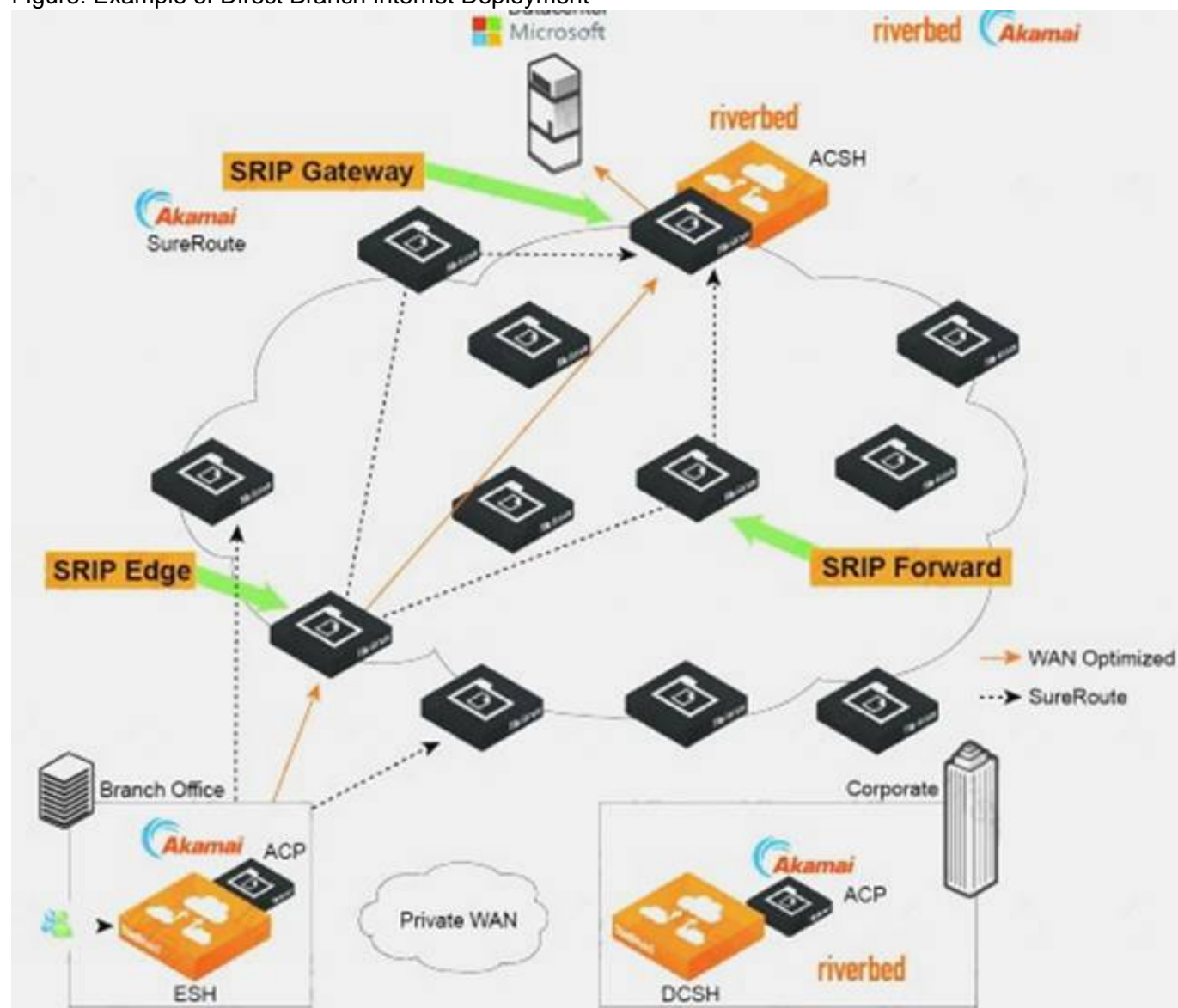
- A. In direct mode, the cloud optimized traffic is encapsulated at the branch-side SteelHead appliance.
- B. Direct mode cannot be used if the internet traffic exit points is centralized at the customer data center and not available from the branch.
- C. In backhaul mode the cloud-optimized traffic is encapsulated at the data center but the SSL optimization starts at the branch.
- D. Backhaul mode allows to optimize traffic to the cloud from the data center without the need of a branch SteelHead.

Answer: AC

Explanation:

A: In direct mode, the ESH appliance encapsulates the traffic and sends it directly to a server in the Akamai (Branch Office xample) network. Akamai SureRoute optimization technology ensures that the traffic is forwarded through the Akamai network along the fastest path toward its destination at the data center hosting the SaaS application.

Figure: Example of Direct Branch Internet Deployment

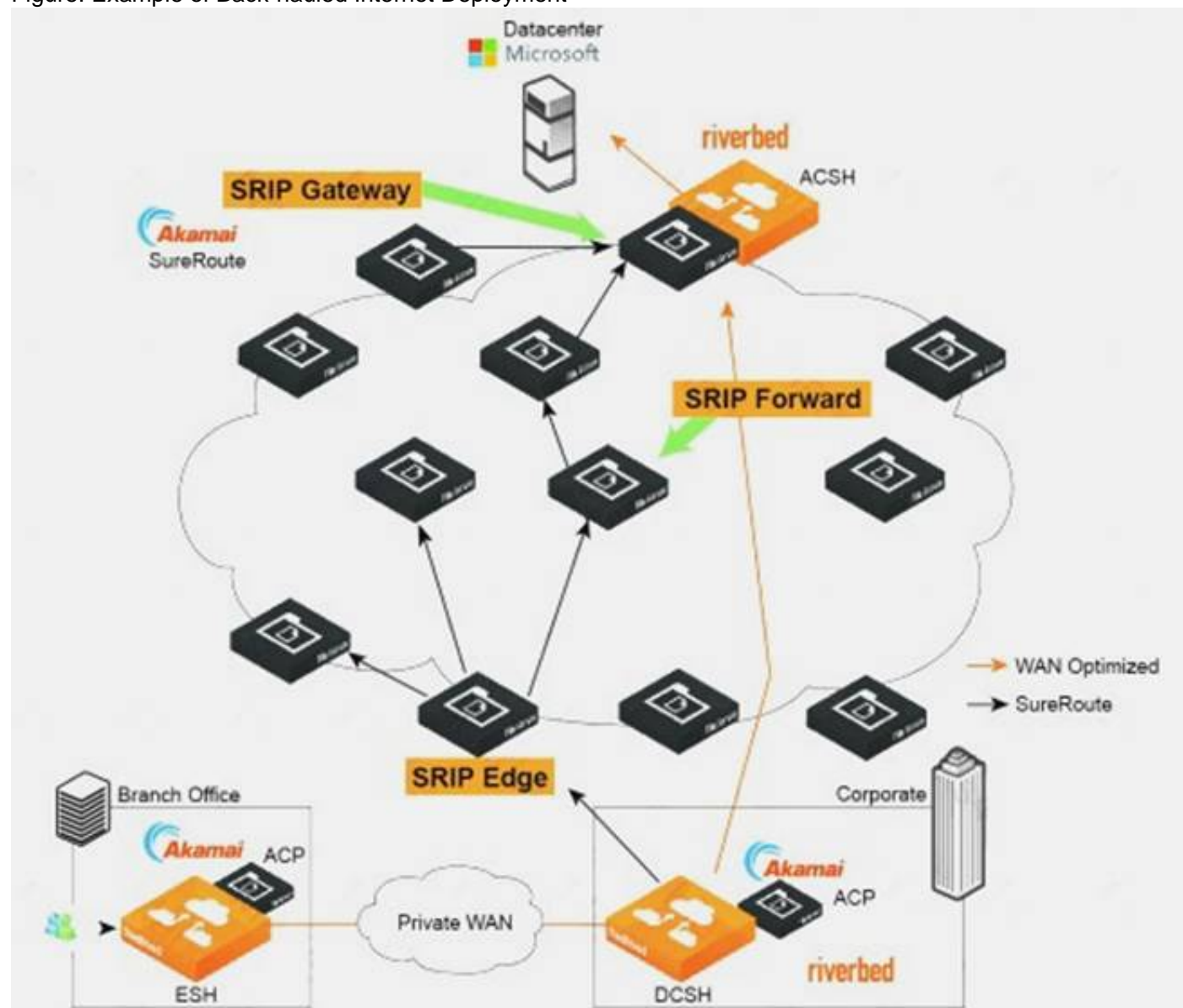


C: Back-hauled Internet Deployment

In this topology, the branch does not have its own connection to the Internet. All traffic directed to the Internet is back-hauled over a private WAN or VPN to the organization's data center.

Although the DCSH encapsulates the traffic, it plays no role in the SSL optimization process. SSL optimization still takes place between the ESH appliance and the ACP. Ensure that you establish the SSL peering trust between them.

Figure: Example of Back-hauled Internet Deployment



References:

SteelHeadSaaS User's Guide, RiOS Version 9.1, July 2015, pages 8-9

NEW QUESTION 141

- (Exam Topic 3)

What is the function of Enhances Auto-Discovery?

- A. It enables optimization to services behind SteelHead Mobile clients.
- B. It sends additional TCP options to detect the last SteelHead in a chain.
- C. It maintains client and server IP addresses during discovery.
- D. It sets up additional connection pool connections to improve auto discovery speed.

Answer: B

Explanation:

References:

<https://support.riverbed.com/bin/support/static/oc1r4qa2pks6172bsj6fte42p4/html/dhatalm0otkq7neeb7h9e9dl8j>

NEW QUESTION 145

- (Exam Topic 3)

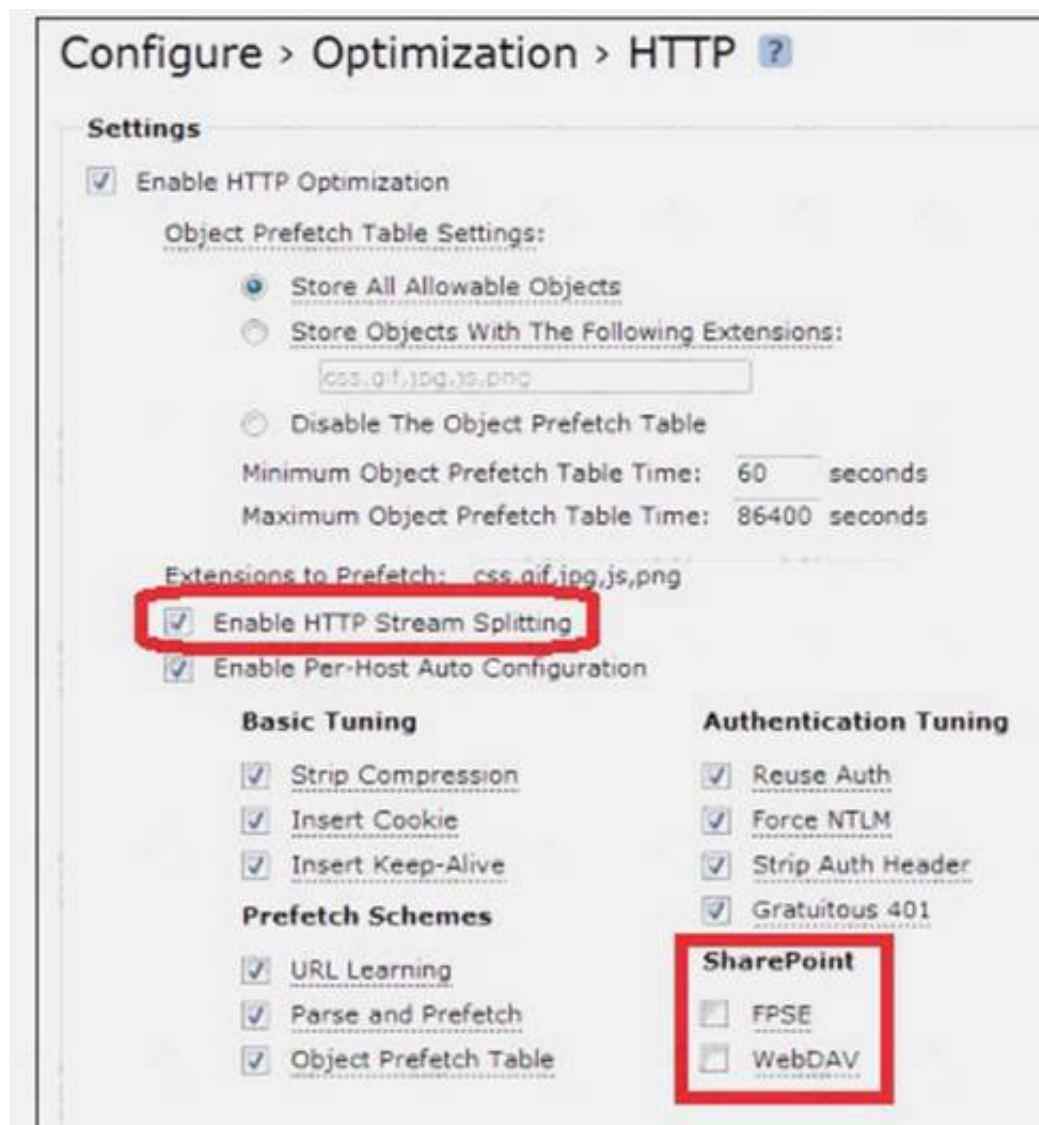
The SteelHead's HTTP optimization blade supports a number of other configurable features as well. Examples include: (choose two)

- A. Video stream splitting
- B. Proxy File Service
- C. Citrix optimization
- D. SharePoint (WebDAV and FPSE)

Answer: AD

Explanation:

To configure an HTTP optimization scheme for a particular hostname or server subnet Choose Configure > Optimization > HTTP to display the HTTP page



Enabling the Enable HTTP Stream Splitting feature on the client-side Steelhead appliance to split Silverlight smooth streaming, Adobe Flash HTTP dynamic streams, and Apple HTTP Live Streaming (HLS).

This feature includes support for Microsoft Silverlight video and Silverlight extensions support on Information Internet Server (IIS) version 7.5 installed on Windows Server 2008 R2.

References:

Steelhead Appliance Management Console User's Guide, Version 8.5.1, November 2013, pages 148, 150

https://support.riverbed.com/download.htm?product_name=steelhead&did=b0k7v640ooladbjgbjpt57rcb9

NEW QUESTION 149

- (Exam Topic 3)

Packet mode optimization supports which types of in-path rules?

- A. Full Transparency Fixed-target
- B. Correct Addressing Auto Discovery
- C. Full Transparency Auto Discovery
- D. Correct Addressing Fixed-target

Answer: D

Explanation:

References:

<https://support.riverbed.com/bin/support/static/fbunsuuo632vi3jrspe0evbko9/html/u2pi6l52l4drmhq3uhck9tu7h>

NEW QUESTION 153

- (Exam Topic 3)

Which policy types make up the configuration for a SteelHead Mobile client?

- A. Acceleration policy
- B. Endpoint policy
- C. Security policy
- D. A single policy for all the above

Answer: B

Explanation:

Configuring Endpoint Settings for Policies

You configure endpoint settings for SteelHead Mobile clients on the Endpoint Settings tab of the Manage > Policies page.

Note: A policy is a set of optimization, security, location awareness, storage, and other configuration settings that determine the optimization rules for the SteelHead Mobile clients. SteelHead Mobile clients must have a policy and other endpoint-specific settings for optimization.

References:

SteelCentral Controller for SteelHead, Mobile User's Guide, Version 4.8, April 2016, page 143

<https://support.riverbed.com/bin/support/download?did=ponkltr1vg9mv23ok2fmtgkj4>

NEW QUESTION 155

- (Exam Topic 3)

Which SteelHead optimization feature improves performance over lossy (error prone) links?

- A. MXTCP
- B. HSTCP
- C. LZ
- D. Optimization blades
- E. SDR

Answer: A

Explanation:

MX-TCP is better suited over traditional TCP and HS-TCP to work in lossy, high latency environments including VSAT Links.

References:

https://www.researchgate.net/publication/303686766_MX-TCP_and_HS-TCP_as_Possible_Options_to_Overco

NEW QUESTION 159

- (Exam Topic 3)

Which Simplified Routing mode is required when a Virtual SteelHead is deployed in a virtual in-path configuration?

- A. All
- B. None
- C. Destination Only
- D. Destination and Source

Answer: B

Explanation:

The None option is required for virtual in-path deployments.

References: Steelhead Appliance Deployment Guide, Including the Steelhead Mobile Controller, December 2013, page 194

NEW QUESTION 161

- (Exam Topic 3)

On the SteelCentral Controller for SteelHead Mobile, which report would you use to examine data reduction over time?

- A. Desktop Bandwidth
- B. Endpoint Report
- C. Endpoint History
- D. Desktop Traffic

Answer: A

Explanation:

The Desktop Bandwidth report answers the following questions:

NEW QUESTION 162

- (Exam Topic 3)

What happens to path selection if the optimization service is stopped on the local SteelHead?

- A. Path selection will continue to work as it does not rely on the optimization service.
- B. Path selection will no longer apply and the traffic will follow its default route.
- C. Path selection will continue to work but with default rules.
- D. Path selection will continue to work as normal, but QoS will no longer be active.

Answer: A

Explanation:

References:

https://www.riverbed.com/document/fpo/RVRBD_FeatureBrief_RiOs_PathSelection_v3.pdf

NEW QUESTION 167

- (Exam Topic 3)

Which authentication methods are available to secure the SteelHead appliance? (Choose three.)

- A. Kerberos
- B. RADIUS
- C. Local password database
- D. TACASS+
- E. NTLM

Answer: BCD

Explanation:

You can log in to a SteelHead with a RADIUS or TACACS+ authentication system for administrative and monitoring purposes. The following methods for user authentication are provided with the SteelHead:

References: <https://support.riverbed.com/bin/support/static/fbunsuu0632vi3jrspe0evbko9/html/u2pi6l52l4drmhq3uhck9tu7h>

NEW QUESTION 171

- (Exam Topic 3)

What is the role of the SteelCentral Controller for SteelHead Mobile?

- A. It is an optimization peer and the SteelCentral Controller for SteelHead manages the clients.
- B. It manages the SteelHead Mobile clients only.
- C. It manages and is an optimization peer for the SteelHead Mobile clients.
- D. It is an optimization peer for the SteelHead Mobile clients only.

Answer: C

Explanation:

SteelHead Mobile is a great way to give application acceleration and optimization to mobile laptops and remote desktops. And to manage all those far-flung SteelHead Mobile deployments, turn to SteelCentral Controller for SteelHead Mobile. It's got everything you need to manage your deployment.

References:

<http://www.riverbed.com/se/products/steelhead/steelhead-steelcentral-controller-for-steelhead-mobile.html>

NEW QUESTION 174

- (Exam Topic 3)

Which statement is true regarding licensing of SteelHead SaaS?

- A. Licensing is based on the number of SaaS applications to optimize.
- B. Licensing is based on the number of SteelHead appliances to be enabled.
- C. Licensing is based on the number of users requiring SaaS optimization.
- D. Licensing of SaaS optimization is included in the support contract.

Answer: C

Explanation:

With flexible SaaS licensing, all supported SaaS applications can be optimized with a single license, and new applications added with a click of a button. Subscriptions are based on the number of users supported, with no restriction as to which SaaS apps are optimized.

References:

<http://www.riverbed.com/se/solutions/solutions-by-technology/saas-and-cloud-performance.html>

NEW QUESTION 176

- (Exam Topic 3)

The CIFS latency optimization feature provides which performance benefits? (Choose two.)

- A. Read-ahead and write-behind optimizations
- B. Data reduction over the WAN
- C. Latency reduction through transaction prediction
- D. Data encryption over the WAN

Answer: BC

Explanation:

CIFS optimization focuses on reducing the impact of WAN round-trip latency of common application and system behavior.

RiOS can perform full latency and bandwidth optimization securely for SMB signed traffic. References:

<https://support.riverbed.com/bin/support/static/lrj6rq1evg0fnm7pekuq3j2md1/html/vte4p5uj2dkg9k1ukjv82835>

NEW QUESTION 180

- (Exam Topic 3)

The SteelHead Admission Control feature activates when: (choose two)

- A. The data store has reached full capacity
- B. Throughput exceeds the licensed limit of the appliance
- C. Total connections exceeds the licensed limit of the appliance
- D. Optimization service memory exceeds the limit of the appliance
- E. Optimized connections exceed the licensed limit of the appliance

Answer: BE

Explanation:

Note: Admission Control is a validation process in communication systems where a check is performed before a connection is established to see if current resources are sufficient for the proposed connection.

References:

http://h20564.www2.hp.com/hpsc/doc/public/display?docId=mmr_kc-0125647

NEW QUESTION 182

- (Exam Topic 3)

Connection forwarding without multi-interface support uses which interface for communication?

- A. Wan0_0
- B. Remote
- C. Primary or Aux
- D. Lan0_0
- E. Inpath0_0

Answer: E

Explanation:

References:

<https://support.riverbed.com/bin/support/static/oc1r4qa2pks6172bsj6fte42p4/html/dhatalm0otkq7neeb7h9e9dl8j>

NEW QUESTION 187

- (Exam Topic 3)

Which statement about virtual SteelHead is NOT true?

- A. It supports Quality of Service and Path Selection.
- B. It can fail to wire using VMware direct bypass feature from ESX 5.0 when utilising a Riverbed hardware bypass card.
- C. It only supports one in-path interface and must be deployed virtually in-path.
- D. It can perform auto discovery in an in-path deployment.
- E. It can perform auto discovery in a virtual in-path deployment.

Answer: C

Explanation:

Out-of-Path Deployment is possible.

For a virtual out-of-path (OOP) deployment, connect the primary interface to the physical in-path NIC to be used, and configure the router to forward traffic to this NIC. You must also enable OOP on Virtual Steelhead.

References:

Virtual Steelhead Installation Guide, Version 1.0 (RiOS v7.0.3), July 2012, page 13 <https://support.riverbed.com/bin/support/download?did=624>

NEW QUESTION 192

- (Exam Topic 3)

What files can be gathered from the SteelHead which would be useful for troubleshooting problems with QoS configuration? (Choose two.)

- A. TCP Dump
- B. System Dump
- C. Core Dump
- D. Process Dump

Answer: AB

Explanation:

TCP Dump can be used to analyze QoS protocol traffic.

The System Dump Analyzer helps you investigate system dumps to identify potential problems with your Steelhead appliances and Riverbed configuration. Simply upload a system dump and view the results.

References: <https://support.riverbed.com/content/support/help.html>

NEW QUESTION 197

- (Exam Topic 3)

When would you use the SCPS optimization feature?

- A. It should be used on slow packet switched networks.
- B. When a firewall is present between two SteelHeads.
- C. When satellite links exist between SteelHeads
- D. On very low latency WAN links

Answer: C

Explanation:

SCPS is primarily used in the US DOD market for multi-vendor interoperability. It primarily provides TCP Optimization with a focus on satellite networks (high latency & loss) which the Steelhead already has several flavors built in (New Reno, HS-TCP & MX-TCP).

References: <https://splash.riverbed.com/thread/2209>

NEW QUESTION 199

- (Exam Topic 3)

What is the remote port used for on a Riverbed hardware appliance?

- A. Remote control using a modem or ISDN device
- B. IPMI "lights out" Remote control management
- C. Export of netflow statistics
- D. SteelFusion Edge device connection
- E. Data store synchronization

Answer: B

Explanation:

To configure the remote management port References:

Stingray Services Controller Command-Line Interface Reference Manual, Version 2.0, December 2014, page 201

<http://www.brocade.com/content/dam/common/documents/content-types/command-reference-guide/brocade-ser>

NEW QUESTION 202

- (Exam Topic 3)

What is the purpose of Simplified Routing?

- A. Simplified routing will properly report netflow to the profiler in an out-of-path deployment allowing for the use of a "Fake interface ID".
- B. Simplified routing will allow for redundant gateways such as HSRP and VRRP and GLBP.
- C. Simplified routing enables an out-of-path SteelHead to understand the LAN and WAN side subnets.

- D. Simplified routing will prevent packets traversing the SteelHead more than once when the SteelHead is deployed on a transit subnet (AKA 'Packet Richohel').
- E. Simplified routing will prevent VLAN leakage between Layer two domains when optimizing more than one VLAN.

Answer: D

Explanation:

References:

<https://www.google.com/url?sa=t&rct=j&q=&esrc=s&source=web&cd=3&cad=rja&uact=8&ved=0ahUKEwjhl>

NEW QUESTION 206

- (Exam Topic 3)

Which ethernet network cable type can you use when connecting your SteelHead appliance to a switch when all ports are hard coded to 100/FULL?

- A. Crossover
- B. It doesn't matter
- C. Straight

Answer: C

Explanation:

To connect a Steelhead appliance to a switch use a straight-through cable. Note: Make sure that you have connected your cables as follows: References: Steelhead Appliance Installation and Configuration Guide, Version 7.0.3, May 2012, page 46 <https://support.riverbed.com/bin/support/download?did=614>

NEW QUESTION 211

- (Exam Topic 3)

What does "Branch managed" mean when adding a SteelHead to the SteelCentral Controller for SteelHead (SCC) inventory?

- A. This SteelHead is fully managed by the SCC.
- B. This SteelHead has SteelFusion capability.
- C. Another SCC as well as this one manages this SteelHead.
- D. This SteelHead supports DNS caching and/or RSP or VSP policies.
- E. The SteelHead is not under control of the SC
- F. Only reports and status information are available.

Answer: E

Explanation:

Branch managed specifies the appliance is managed individually at the branch office. You cannot manage this SteelHead from the SCC.

References:

SteelCentral Controller for SteelHead, User's Guide, Version 9.0, December 2014 , page 113

https://support.riverbed.com/download.htm?product_name=cmc&did=5k0kbbt7ggkok5d94jgl026go6&public=tr

NEW QUESTION 213

- (Exam Topic 3)

Which of the possible Simplified Routing modes should be used when installing the SteelHead on an 802.1Q trunk? (Choose three.)

- A. All
- B. None
- C. Destination and Source
- D. Destination Only

Answer: ACD

Explanation:

In All mode the SteelHead collects mappings for destination and source IP, destination and source MAC, VLAN tag, and Steelhead appliance inner connection traffic and auto-discovery options. This option has the advantage of learning simplified entries faster than the destination only option. Riverbed recommends that you use <all> in topologies when you deploy the Steelhead appliance a 802.1q trunk.

In Destination and source mode the SteelHead collects mappings from destination and source IP, destination and source MAC, and VLAN tag (when deployed on 802.1q trunk).

In Destination only mode the SteelHead collects mappings from destination IP, destination MAC, and VLAN tag (when deployed on 802.1q trunk). References:

Steelhead Appliance Deployment Guide, Including the Steelhead Mobile Controller, December 2013, page 194

NEW QUESTION 216

- (Exam Topic 3)

The auto-discovery probe uses which TCP option number (in decimal)? (Hint: Use the calculator)

- A. 78
- B. 76
- C. 66
- D. Auto-discovery does not use TCP options

Answer: B

NEW QUESTION 221

- (Exam Topic 3)

A SteelHead is joined to a Windows domain using the Windows Active Directory administrator password. In order to use transparent authentication to optimize

signed SMB2 traffic, which of the following is true?

- A. SMB2 signing optimizations must be enabled on the server -side SteelHead only.
- B. SMB2 signing optimizations must be enabled on both the client-side and server-side SteelHeads.
- C. A delegation or replication account must be configured on client-side SteelHead.
- D. A delegation or replication account must be configured on both the client-side and server-side SteelHeads.

Answer: A

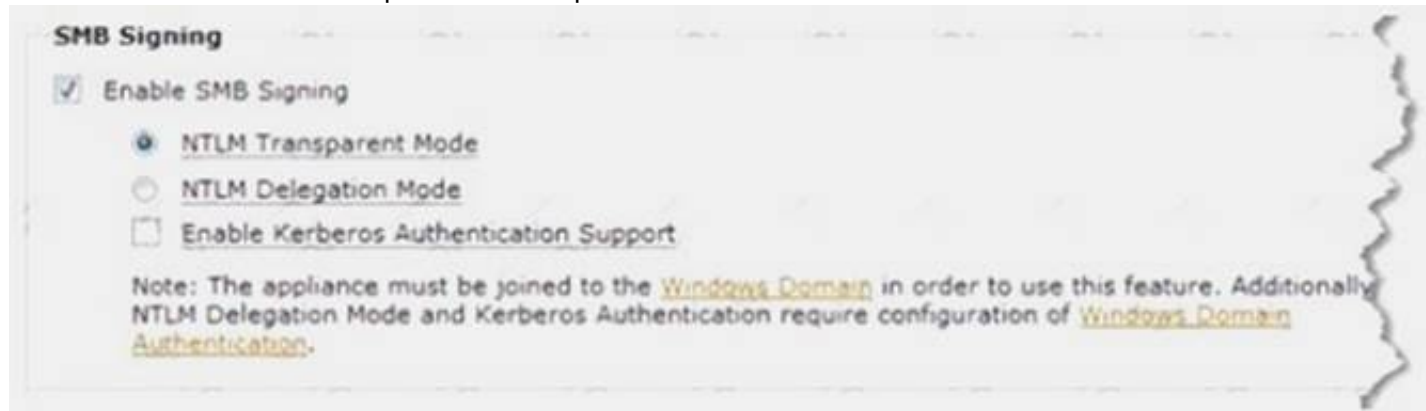
Explanation:

Configure the Steelhead appliance to optimize Secure Windows traffic Configuration steps for Signed SMB and Signed SMB2

3.2.1 On the server-side Steelhead navigate to Configure > Optimization > CIFS (SMB1).

3.2.2 Under the SMB Signing section, check the 'Enable SMB Signing' checkbox

3.2.3 Ensure the 'NTLM Transparent Mode' option is selected



References:

Optimization in a Secure Windows Environment, White Paper , pages 35-36

https://support.riverbed.com/download.htm?filename=public/doc/technotes/Windows_security_guide.pdf

NEW QUESTION 224

- (Exam Topic 3)

Looking at the figure, could we say if the connection is optimized by SH SaaS?

0 0% ▲ Errors										
showing 2 matching connections						2 optimized, 0 denied, 0 discarded connections				
	CT	Notes	Source:Port	Destination:Port	LAN kB	WAN kB	Reduction	Start Time	Application	
▶			172.16.38.204:9657	132.245.229.178:443	936	361	61%	2014/10/17 23:48:29	MAPI-OA	
▶			172.16.38.204:9658	132.245.229.178:443	48,166	341	99%	2014/10/17 23:48:29	MAPI-OA	

- A. Yes, because we see the Cloud icon in the notes Section.
- B. N
- C. You must look in the connection details.
- D. N
- E. Although 132.245.229.178 is a Microsoft address the optimization could be happening through a Cloud SH and not SH SaaS.

Answer: C

NEW QUESTION 227

- (Exam Topic 3)

You have a SteelHead with paths over a public and a private network. You want to encrypt the traffic which goes via the public network.

Which are the relevant SteelHead configuration requirements? (Choose two.)

- A. The peer SteelHead must be marked as a Cloud SteelHead in the local SteelHead peering table.
- B. The network must be set to 'public' by ticking the 'Public Network' box in the configuration.
- C. A SteelCentral Controller for SteelHead must be used to push the secure transport configuration.
- D. The In-Path IP address of the SteelHead must be in public address space.

Answer: B

Explanation:

B: Because secure transport was built taking hybrid networking into account, you can configure a private and public IP address. The public IP address relies on reachability over a network marked Public. This configuration allows the controller to first be reached over the private network and then the public network.

NEW QUESTION 230

- (Exam Topic 3)

What is NOT supported in Virtual in-path deployments?

- A. Server-side initiated connections
- B. Simplified Routing
- C. Path Selection

- D. SteelHead Mobile optimization
- E. HSRP or VRRP gateways

Answer: A

NEW QUESTION 232

- (Exam Topic 3)

Which HTTP optimization feature uses an algorithm to determine which objects are likely to be requested for a specific web page, and prefetches them so available when the client makes the request?

- A. Gratuitous 401 Messages
- B. URL Learning
- C. Object Prefetch Table
- D. Strip Compression
- E. Parse-and-Prefetch

Answer: E

Explanation:

References:

<https://support.riverbed.com/bin/support/download?did=333>

NEW QUESTION 235

- (Exam Topic 3)

When optimizing protocols such as signed SMB or encrypted MAPI, which of the following is true?

- A. Special configuration is always necessary on the Domain Controller.
- B. The server-side SteelHead must be joined to the domain.
- C. The domain administrator password must be made available to the SteelHead.
- D. The client-side SteelHead must be joined to the domain.

Answer: B

Explanation:

The server-side Steelhead appliance must be joined to the Windows Domain in order to Enable SMB Signing or to enable encrypted MAPI.

NEW QUESTION 240

.....

THANKS FOR TRYING THE DEMO OF OUR PRODUCT

Visit Our Site to Purchase the Full Set of Actual 101-01 Exam Questions With Answers.

We Also Provide Practice Exam Software That Simulates Real Exam Environment And Has Many Self-Assessment Features. Order the 101-01 Product From:

<https://www.2passeasy.com/dumps/101-01/>

Money Back Guarantee

101-01 Practice Exam Features:

- * 101-01 Questions and Answers Updated Frequently
- * 101-01 Practice Questions Verified by Expert Senior Certified Staff
- * 101-01 Most Realistic Questions that Guarantee you a Pass on Your FirstTry
- * 101-01 Practice Test Questions in Multiple Choice Formats and Updatesfor 1 Year