



Cisco

Exam Questions 300-370

Troubleshooting Cisco Wireless Enterprise Network

NEW QUESTION 1

Refer to the exhibit.

```
Apr 8 20:02:55.477: RADIUS(00000031): Send Access-Request
  to 10.0.0.3:1234 id 21645/145, len 139
Apr 8 20:02:55.478: RADIUS: authenticator B6 F7 BB 41 0E 9F 44 D1
  - 9A F8 E2 D7 5D 70 F2 76
Apr 8 20:02:55.478: RADIUS: User-Name          [1]      9      "aironet"
Apr 8 20:02:55.478: RADIUS: Framed-MTU        [12]     6      1400
Apr 8 20:02:55.478: RADIUS: Called-Station-Id [30]    16     "0005.9a39.0374"
Apr 8 20:02:55.478: RADIUS: Calling-Station-Id [31]    16     "0002.8aa6.304f"
Apr 8 20:02:55.478: RADIUS: Service-Type      [6]      6      Login      [1]
Apr 8 20:02:55.478: RADIUS: Message-Authenticator [80]   18      *
Apr 8 20:02:55.478: RADIUS: EAP-Message      [79]   14
  omitted
Apr 8 20:03:15.470: RADIUS/DECODE:
  parse response; FAIL
Apr 8 20:03:15.470: dot11_auth_dot1x_parse_aaa_resp:
  Received server response: FAIL
Apr 8 20:03:15.470: dot11_auth_dot1x_parse_aaa_resp:
  found eap pak in server response
Apr 8 20:03:15.470: dot11_auth_dot1x_parse_aaa_resp:
  detailed aaa_status 1
Apr 8 20:03:15.471: dot11_auth_dot1x_run_rfs:
  Executing Action(SERVER_WAIT, SERVER_FAIL) for 0002.8aa6.304f
Apr 8 20:03:15.471: dot11_auth_dot1x_send_client_fail:
  Authentication failed for 0002.8aa6.304f
Apr 8 20:03:15.471: %DOT11-7-AUTH_FAILED: Station 0002.8aa6.304f
  Authentication failed
```

A client reports being unable to log into the wireless network According to the output, which network information should be verified?

- A. the Failed Attempts log on the authentication server
- B. that the AP has IP connectivity to the authentication server
- C. that the user has an account on the authentication server
- D. that the authentication and accounting configuration are correct

Answer: B

NEW QUESTION 2

An engineer must open a support case with Cisco TAC. Which two commands verify the model and serial number of a controller? (Choose two)

- A. show sysinfo
- B. show udi
- C. show inventory
- D. show boot
- E. show tech-support

Answer: AB

NEW QUESTION 3

While reviewing CleanAir data in Cisco Prime Infrastructure, an engineer notices that a wideband jammer is not sending its Interferer Security Trap correctly. The engineer determines that the default seventy level has been changed. Which value does the engineer select to reset the seventy level to its factory setting?

- A. informational
- B. major
- C. minor
- D. warning
- E. critical

Answer: D

NEW QUESTION 4

An engineer is using various techniques to discover and isolate rogues on the network. For which technique must the engineer consider legal ramifications?

- A. rogue AP containment
- B. RF detection
- C. switch port tracing
- D. wire detection
- E. Cisco Prime Infrastructure location services

Answer: A

NEW QUESTION 5

Which channel width is the maximum that can be obtained by bonding two 802.11 ac subchannels according to US regulations?

- A. 160 MHz
- B. 120 MHz
- C. 84 MHz
- D. 240 MHz

Answer: A

Explanation:

To increase throughput, 802.11ac introduces two new channel widths. All 802.11ac devices are required to support 80 MHz channels, which doubles the size of the spectral channel over 802.11n. It further adds a 160 MHz channel option for even higher speeds. Due to the limitations of finding contiguous 160 MHz spectrum, the standard allows for a 160 MHz channel to be either a single contiguous block or two noncontiguous 80 MHz channels.

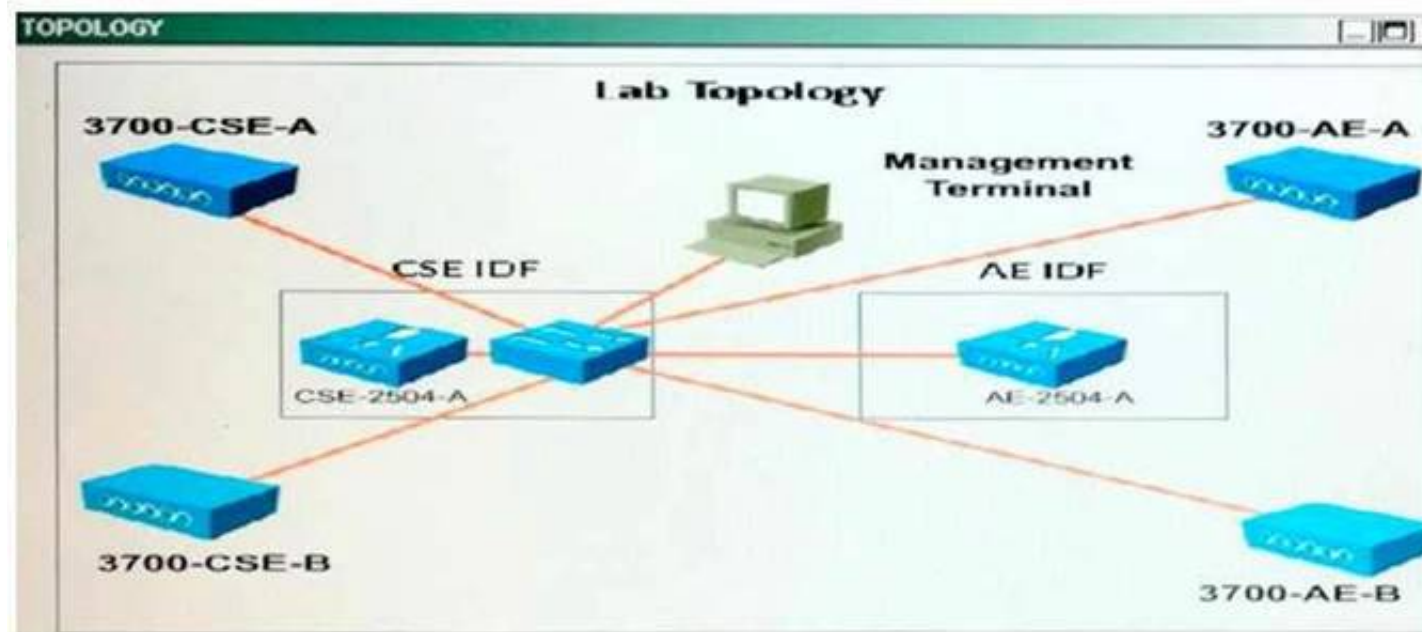
NEW QUESTION 6

Scenario

The big Engineering IT team has been in the lab to test some new features that the existing network does not support. The AP Groups, AP Failover, and Local Web Auth features are having problems. In this test environment, the controllers support the only Composite Structural Engineering and Aerodynamic Engineering groups. All SSIDs must omit the department name.

Refer to the exhibit. The diagram is the floor plan for the Big Engineering office and the distribution of the departments. These tables show how the controllers have been configured.

Note, not all menu items, text boxes, or radio buttons are active.



BE-GA

Controller Management Interfaces

Name	IP address	Gateway	DHCP Interface
CSE-2504A	192.168.2.98/24	192.168.2.1	192.168.2.98
AE-2504A	192.168.3.98/24	192.168.3.1	192.168.3.98
HF-2504A	192.168.4.98/24	192.168.4.1	192.168.4.98

Composite and Structural Engineering (CSE) WLANs

Profile Name	SSID
CSE-Engineering	CSE-Engineering
CSE-Contractors	CSE-Contractors
CSE-Employees	CSE-Employees

AP Groups-CSE-WLANs

WLANs	APs
CSE-Engineering	3700-CSE-A
CSE-Contractors	3700-CSE-B
CSE-Employees	

AE-User Names and Passwords

User Name	Password
Joan Smith	aetest
Carol Black	aetest

You review the configuration of the test network controller. Which four changes must be made to resolve the problems? (Choose four.)

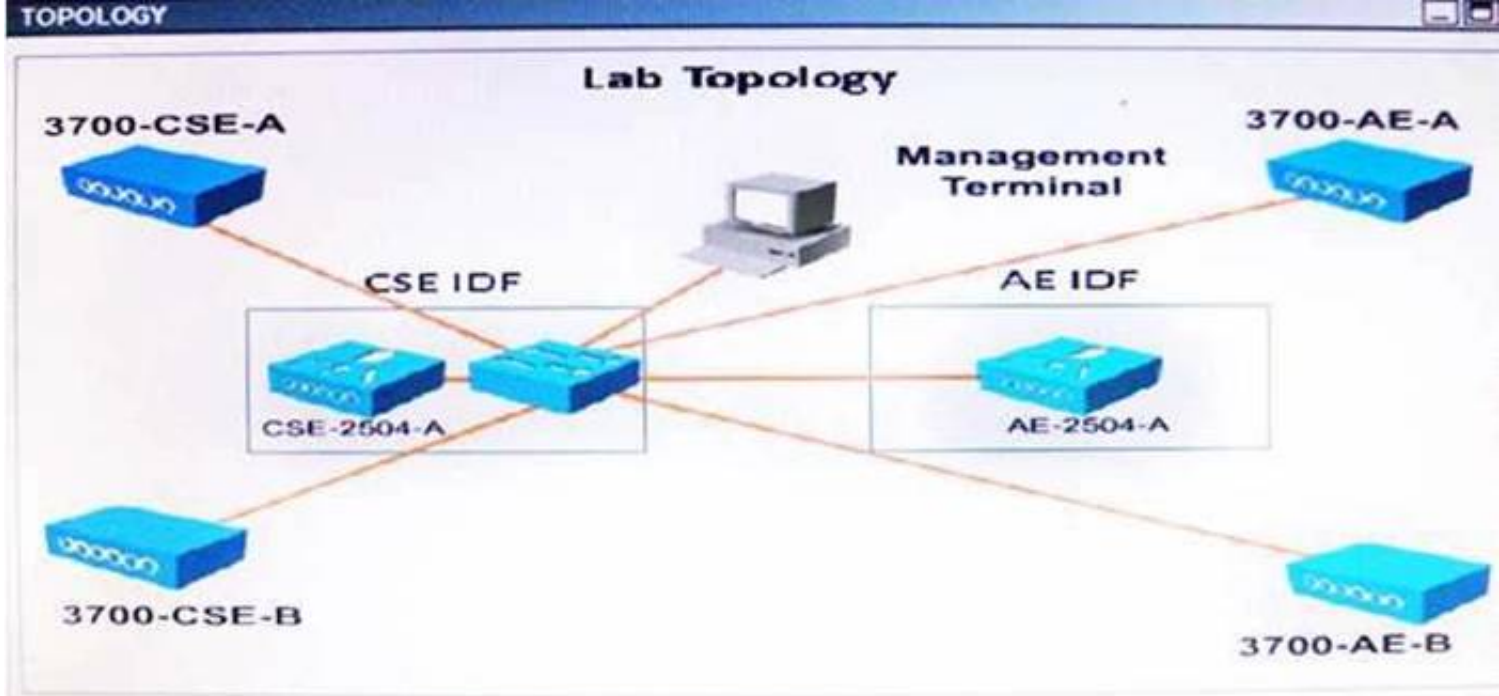
When you review the configuration of the test network controller what needs to be changed to resolve the problems? (Choose four.)

- A. Change the High Availability Primary Controller Management Interface IP address.
- B. Remove the current WLANs and replace them with WLANs that have the same SSID names as on the AE-2504A controller.
- C. Add the Local Net User names and passwords
- D. Change the Layer 2 security to none and Layer 3 Security to Web Policy for the CSE-Contractors WLAN
- E. Remove me current WLAN from the CSE-WLAN AP Group and add all three of the WLANs configured in the CSE-2504A
- F. Add the CSE APs to the CSE-WLANs AP-Grou

Answer: BCDF

NEW QUESTION 7

Which two statements about the WLAN are true? (Choose two)



Refer to the exhibit.

Packet	Source	Destination	Channel	Data Rate	Size	Protocol
3377	Intel:2F:D3:70	Cisco:10:44:EF	136	24.0	48	EAP Response
3378	Cisco:10:44:EF	Intel:2F:D3:70	136	24.0	18	802.11 Ack
3379	Cisco:10:44:EF	Intel:2F:D3:70	136	24.0	85	EAP Request
3380	Intel:2F:D3:70	Cisco:10:44:EF	136	6.0	101	EAP Response
3381	Cisco:10:44:EF	Intel:2F:D3:70	136	6.0	18	802.11 Ack
3382	Cisco:10:44:EF	Intel:2F:D3:70	136	24.0	117	EAP Request
3383	Intel:2F:D3:70	Cisco:10:44:EF	136	24.0	149	EAP Response
3384	Cisco:10:44:EF	Intel:2F:D3:70	136	24.0	18	802.11 Ack
3385	Cisco:10:44:EF	Intel:2F:D3:70	136	24.0	133	EAP Request
3386	Intel:2F:D3:70	Cisco:10:44:EF	136	24.0	85	EAP Response
3387	Cisco:10:44:EF	Intel:2F:D3:70	136	24.0	18	802.11 Ack
3388	Intel:2F:D3:70	Cisco:10:44:EF	136	24.0	85	EAP Response
3389	Cisco:10:44:EF	Intel:2F:D3:70	136	24.0	18	802.11 Ack
3390	Cisco:10:44:EF	Intel:2F:D3:70	136	24.0	46	EAP Success
3391	Cisco:10:44:EF	Intel:2F:D3:70	136	24.0	159	EAPOL-Key
3392	Intel:2F:D3:70	Cisco:10:44:EF	136	24.0	161	EAPOL-Key
3393	Cisco:10:44:EF	Intel:2F:D3:70	136	24.0	18	802.11 Ack
3394	Cisco:10:44:EF	Intel:2F:D3:70	136	24.0	193	EAPOL-Key
3395	Intel:2F:D3:70	Cisco:10:44:EF	136	24.0	137	EAPOL-Key
3396	Cisco:10:44:EF	Intel:2F:D3:70	136	24.0	18	802.11 Ack
3397	Cisco:10:44:EF	Intel:2F:D3:70	136	24.0	24	802.11 RTS
3398	Cisco:10:44:EF	Intel:2F:D3:70	136	2.0	108	802.11 Encrypted Data
3399	Cisco:10:44:EF	Intel:2F:D3:70	136	24.0	24	802.11 RTS
3400	Cisco:10:44:EF	Intel:2F:D3:70	136	2.0	108	802.11 Encrypted Data

- A. The client has a 5 GHz connection.
- B. The client has authenticated.
- C. The client is 802.11n capable.
- D. The Cisco device is a 3600 series AP.
- E. 802 11b data rates are disabled in this WLAN

Answer: CE

NEW QUESTION 8

The AP is unable to join the controller. What is the cause of this error? Refer to the exhibit.

Thu Aug 1	16:23:27	2013	AP	with MAC bb:1f:11:1f:1d:3f (APbb1f.111f.1d3f) is	unknown.
Thu Aug 1	16:23:27	2013	AP	Associated. Base Radio MAC: bb:1f:11:1f:1d:3f	
Thu Aug 1	16:23:13	2013	AP	Disassociated: Base Radio MAC:bb:1f:11:1f:1d:3f	
Thu Aug 1	16:23:16	2013	AP	with MAC bb:1f:11:1f:1d:3f (APbb1f.111f.1d3f) is	unknown.
Thu Aug 1	16:23:16	2013	AP	Associated. Base Radio MAC: bb:1f:11:1f:1d:3f	
Thu Aug 1	16:23:08	2013	AP	Disassociated. Base Radio MAC:bb:1f:11:1f:1d:3f	
Thu Aug 1	16:23:04	2013	AP	with MAC bb:1f:11:1f:1d:3f (APbb1f.111f.1d3f) is	unknown.

- A. The controller code version is lower than the code of the AP attempting to join.
- B. AP code is not the same as the controller and must download firmware.
- C. AP model \% not compatible with the controller code version.
- D. The AP is riot conjured in the controller auth-list of acceptable AP

Answer: C

NEW QUESTION 9

A wireless user is experiencing connectivity issues with their Mac OS laptop. If the Mac is exhibiting the behavior of a "sticky client," how can the tech verify which AP the user is currently connected to?

- A. Hold shift while clicking the wireless icon.
- B. Hold option while clicking the wireless icon.
- C. Hold control while clicking the wireless icon.
- D. Hold command while clicking the wireless ico

Answer: B

NEW QUESTION 10

You have successfully configured HA and SSO using two Cisco 5508 Wireless LAN Controllers. You are able to access the Active Primary WLC but are unable to access the Secondary Standby WLC. Which two methods will allow you to access the standby unit? (Choose two.)

- A. Via SSH to the Redundancy Management Interface.
- B. Via Service Port Interface.
- C. Via SSH to the Management Interface.
- D. Via console connectio

Answer: CD

NEW QUESTION 10

DRAG DROP

Drag and drop the Layer 3 WLAN controller mutual authentication join process events on the left into the order in which they occur on the right Not all options are used.

AP downloads configuration	first
AP join request sent	second
AP discovery interval expires	third
WLAN controller sends join response	fourth
AP validates WLAN controller	fifth
WLAN controller validates AP certificate	

- A. Mastered
- B. Not Mastered

Answer: A

Explanation:

AP join request sent

WLAN controller sends join response

WLAN controller validates AP certificate

AP validates WLAN controller

AP downloads configuration

NEW QUESTION 14

Refer to the exhibit.

Client Statistics:		
Number of Bytes Received.....	328004	
Number of Bytes Sent.....	1596046	
Total Number of Bytes Sent.....	1596046	
Total Number of Bytes Recv.....	328004	
Number of Bytes Sent (last 90s).....	6766	
Number of Bytes Recv (last 90s).....	8400	
Number of Packets Received.....	3476	
Number of Packets Sent.....	3241	
Number of Interim-Update Sent.....	0	
Number of EAP Id Request Msg Timeouts.....	2	
Number of EAP Id Request Msg Failures.....	0	
Number of EAP Request Msg Timeouts.....	0	
Number of EAP Request Msg Failures.....	0	
Number of EAP Key Msg Timeouts.....	0	
Number of EAP Key Msg Failures.....	0	
Number of Data Retries.....	564	
Number of RTS Retries.....	0	
Number of Duplicate Received Packets.....	14	
Number of Decrypt Failed Packets.....	0	
Number of Mic Failed Packets.....	0	
Number of Mic Missing Packets.....	0	
Number of RA Packets Dropped.....	0	
Number of Policy Errors.....	0	
Radio Signal Strength Indicator.....	-81 dBm	
Signal to Noise Ratio.....	17 dB	

An engineer is troubleshooting access point placement issues and suspects that poor placement is causing connectivity issues. When running the show client detail <mac> command, the engineer notices this output. Which option indicates poor access point placement?

- A. excessive number of bytes sent compared to bytes received
- B. high signal-to-noise ratio
- C. excessive number of data retries
- D. low ratio signal strength indicator
- E. duplicate received packets
- F. poor statistics for the last 90 seconds

Answer: CD

NEW QUESTION 17

A WLAN was installed at a high AP density. DTPC is lowering the transmit power of many APs too low. Which change in the DTPC transmit power threshold must be made to allow APs to globally increase AP transmit power by 3dBm?

- A. from 70 dBm to 73 dBm
- B. from -70 dBm to -73 dBm
- C. from 70 dBm to 67 dBm
- D. from -70 dBm to -67 dBm

Answer: D

NEW QUESTION 21

Which visual cue accurately describes a characteristic of the zone of impact displayed in Cisco Prime Infrastructure?

- A. The closer the circle is to blue, the more localized the impact is.
- B. The smaller the circle, the more localized the impact is.
- C. The larger the circle, the more severe the impact is.
- D. The more translucent the circle is, the more localized the impact is.

Answer: B

NEW QUESTION 26

A mobile workstation in a factory contains an AP that is configured as a workgroup bridge. When the workstation moves, it loses connectivity and disrupts operation. What can the engineer implement to minimize roaming problems?

- A. Use 802.1X authentication.
- B. Use Cisco Centralized Key Management for fast roaming.
- C. Use AES for encryption.
- D. Use the mobile station command.

Answer: B

NEW QUESTION 30

A Wireless LAN Cisco engineer is troubleshooting 802.11ac WLAN at customer site Doe to interferences with neighboring 802.11n networks the engineer must determine the current primary secondary channel allocation to enhance the current configuration. Channel 60 has been chosen by the customer as primary 20 MHz channel. Which combination determines the resulting primary 40 MHz and primary 80 MHz channels?

- A. primary 40 MHz channel 62, primary 80 MHz channel 58
- B. primary 40 MHz channel 54, primary 80 MHz channel 58
- C. primary 40 MHz channel 64, primary 80 MHz channel 60
- D. primary 40 MHz channel 60, primary 80 MHz channel 56

Answer: A

NEW QUESTION 35

A user reports being unable to connect to a server with a certain program while connected to wireless. Which troubleshooting methodology can be used to begin the troubleshooting process?

- A. top-down
- B. shoot from the hip
- C. follow the path
- D. bottom-up
- E. divide and conquer

Answer: A

NEW QUESTION 40

Some users are experiencing inconsistent performance on their mobile devices as they move throughout the building when browsing the Internet. Which feature provides a more consistent user experience?

- A. low RSSI check
- B. 802.11r
- C. RX-SOP
- D. optimized roaming

Answer: A

NEW QUESTION 44

An engineer has received an alarm on a wireless LAN controller and is unsure of its meaning. The engineer attempted to ping the wireless LAN controller interfaces. Which troubleshooting methodology does this action demonstrate?

- A. bottom-up
- B. follow the path
- C. shoot from the hip
- D. top-down
- E. divide and conquer

Answer: E

NEW QUESTION 45

DRAG DROP

Drag and drop the IP address range on the left onto the specific purpose for multicast groups on the right. Not all options are used.

224.0.1.0 through 238.255.255.255	Limited scope
214.0.0.0 through 224.0.0.255	Reserved link local
239.0.0.0 through 239.255.x.y/16	Globally scoped
224.0.0.0 through 224.0.0.255	
239.0.0.0 through 240.255.x.y/16	

- A. Mastered
- B. Not Mastered

Answer: A

Explanation:

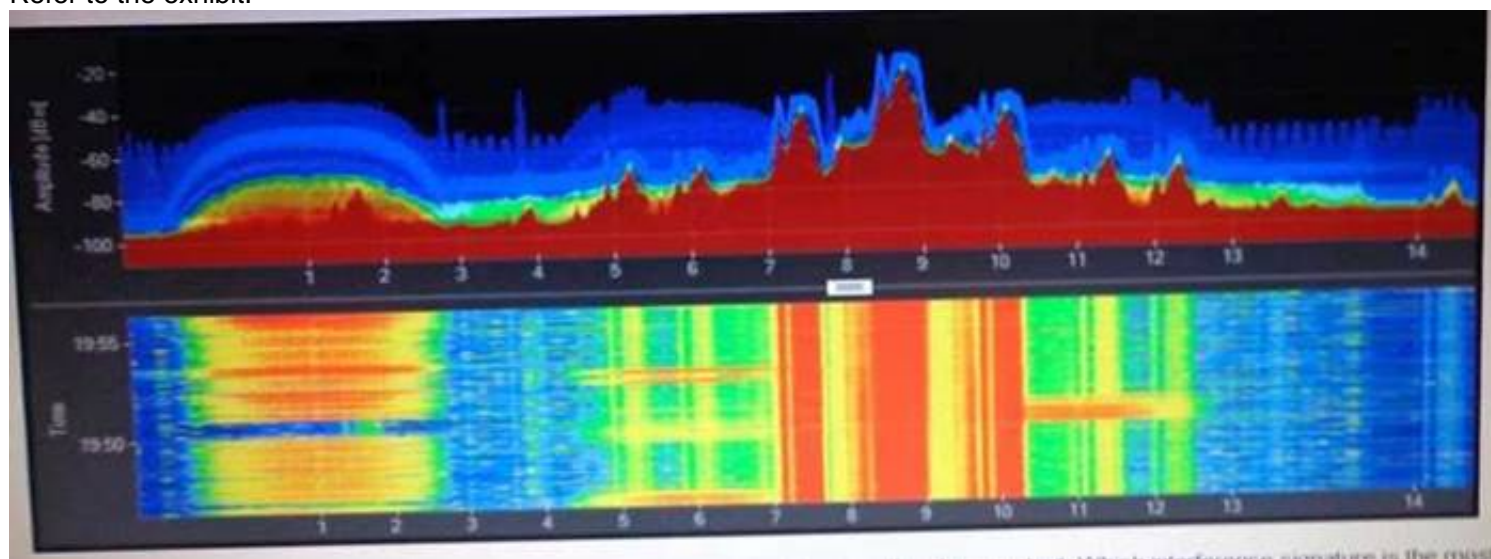
239.0.0.0. through 239.255.x.y/16

224.0.0.0 through 224.0.0.255

224.0.1.0 through 238.255.255.255

NEW QUESTION 48

An engineer is troubleshooting non-802.11 interference and observes the shown output. Which interference signature is the most harmful to Wi-Fi? Refer to the exhibit.



- A. cordless phone
- B. microwave oven
- C. 2.4 GHz wideband jammer
- D. FHSS Bluetooth
- E. analog video camera

Answer: A

NEW QUESTION 50

Which three steps would a network engineer use to troubleshoot an AP join problem? (Choose three.)

- A. Validate the STP configuration.
- B. Verify the ping AP from the controller.
- C. Verify the ping AP from the client.
- D. Verify that the AP is getting an address from the DHCP server.
- E. Validate the SNMP configuration.
- F. Verify the authentication configuration parameter

Answer: ABF

NEW QUESTION 51

An engineer is creating a custom rogue classification rule directly on a controller. Which two conditions are possible when adding a custom rule to a controller? (Choose two.)

- A. internal
- B. ad hoc
- C. client-count
- D. duration
- E. WLAN
- F. open authentication

Answer: AD

NEW QUESTION 56

A WLC receives a coverage hole detection alert from an AP. What two conditions must occur for the controller to dynamically mitigate the situation? (Choose two.)

- A. The AP serving the troubled client must currently have a power level 2 or lower.
- B. The client must be able to dynamically raise its power level to match the new AP power.
- C. The AP must be RF visible to additional APs on the other side of the coverage hole for calibration.
- D. The client must have WMM-PS disabled to allow for the increased power usage.
- E. The AP serving the troubled client must currently have a power level higher than 2.

Answer: AB

NEW QUESTION 59

A Cisco WLC v7.0 is not seeing an AP join. Which starting prefix debug command can help determine a combination of discovery/join and DHCP process status?

- A. debug capwap events - from Cisco WLC
- B. debug capwap events - from the AP
- C. debug ip udp - from Cisco WLC
- D. debug ip udp - from the AP

Answer: D

NEW QUESTION 61

An engineer is troubleshooting reports from a Cisco 7925 user that is experiencing consistent gaps in audio when roaming from one area of the facility to another. Packet analysis shows that the phone is flapping between two access points due to poor SNR. Which action fixes this issue?

- A. Add access points to the areas that have a noise floor below -90 dBm.
- B. Adjust the roaming threshold of the WLC to -67 dBm for improved access point performance.
- C. Use coverage hole detection to allow the access points to compensate for the poor roaming.
- D. Redesign the area for sufficient overlap with access points running at reduced power level

Answer: C

NEW QUESTION 62

Which modulation, which was introduced in 802.11ac standard, influences end-user experience by providing the highest data rates and throughput?

- A. 256 QAM
- B. QPSK
- C. 16 QAM
- D. 64 QAM

Answer: A

NEW QUESTION 63

An engineer is troubleshooting why a MAC address was not listed in the MAC table and discovers that the VLAN was enabled only on the interface that data is coming in on. Which change fixes this problem?

- A. Enable outgoing interfaces.
- B. Disable sticky MAC on the access switch.
- C. Remove loop detection on interfaces.
- D. Flush the MAC address table

Answer: A

NEW QUESTION 65

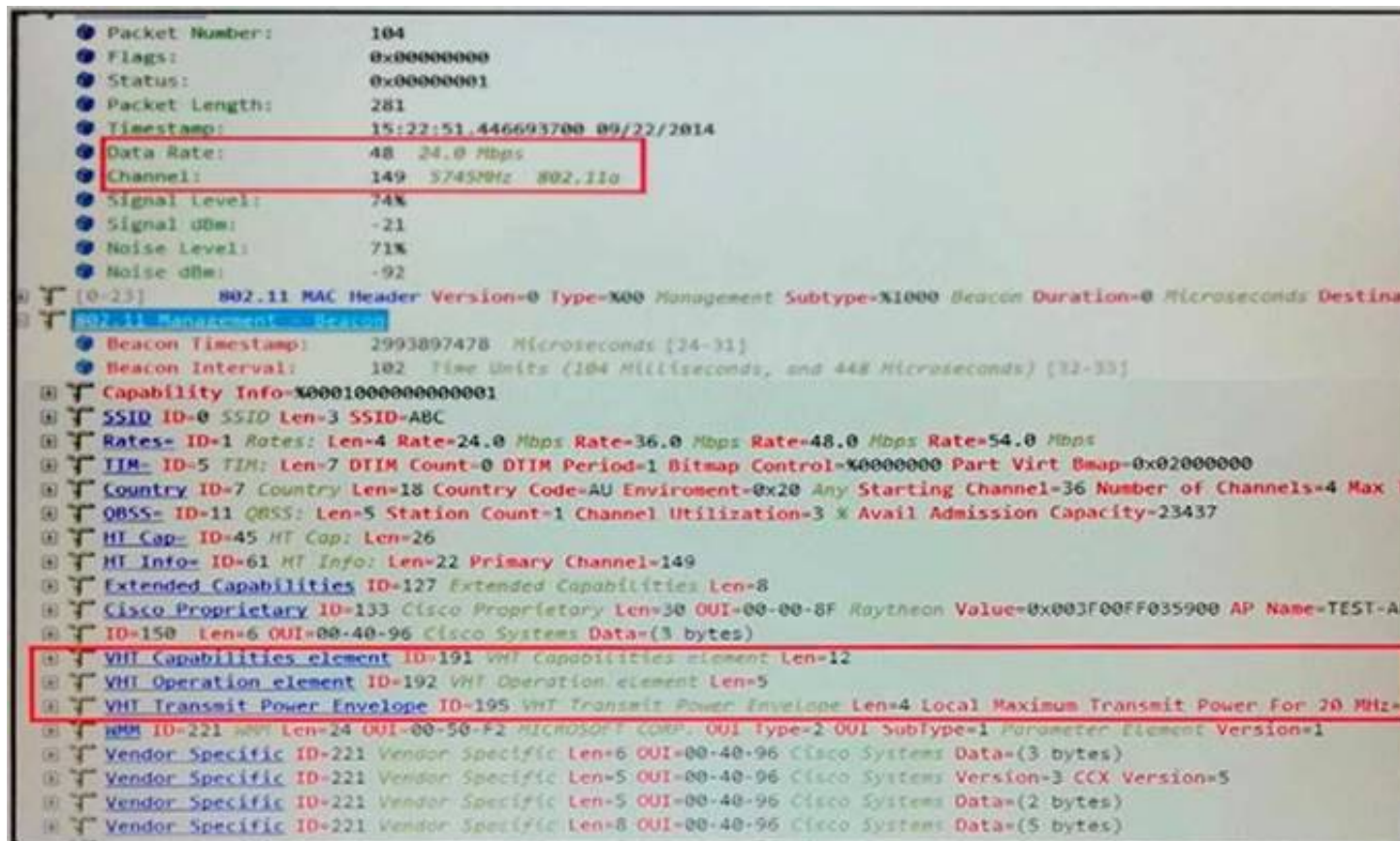
An engineer has discovered that a number of new access points are failing to join the wireless controller module that has been recently enabled on a switch stack of three Cisco Catalyst 3850 switches running 3.02.03 SE version of Cisco IOS-XE. All cables have been verified and all access point switch port configurations are identical. Which options is the likely root cause of the issue?

- A. Stacked Cisco Catalyst 3850 switches only support 100 CAPWAP termination licences.
- B. Cisco IOS-XE version 3.02.03 SE supports only access points on the master switch.
- C. The EULA has not been accepted on the switch wireless controller module.
- D. When stacked, the Cisco Catalyst 3850 cannot use the wireless controller module

Answer: D

NEW QUESTION 66

Refer to the exhibit.



What is the highest mandatory rate in Mbps configured for the AP?

- A. 54
- B. 36
- C. 24
- D. 48

Answer: C

NEW QUESTION 70

From the WLC GUI, which RRM setting do you configure to avoid non-Wi-Fi interference?

- A. Coverage
- B. TPC
- C. General
- D. DCA

Answer: D

NEW QUESTION 74

Refer to the exhibit.




```

CCNP-W#sh run | b interface
GigabitEthernet0/1

interface GigabitEthernet0/1
switchport trunk encapsulation dot1q
switchport mode trunk
channel-group 1 mode on
!
interface GigabitEthernet0/2
switchport trunk encapsulation dot1q
switchport mode trunk
channel-group 1 mode on
!
interface GigabitEthernet0/3
switchport trunk encapsulation dot1q
switchport mode trunk
channel-group 2 mode on
!
interface GigabitEthernet0/4
switchport trunk encapsulation dot1q
switchport mode trunk
channel-group 2 mode on
!
CCNP-W#

CCNP-W#sh cdp neighbors
Capability Codes: R - Router, T - Trans
Bridge, B - Source Router Bridge
S - Switch, H - Host, I - IGMP, r -
repeater, P - Phone,
D - remote, C - CVTA, M - Two-port Mac
Relay

Device ID Local Intrfce Holdtme
Capability Platform Port ID
Cisco-WLC2 Gig 0/1 168 H AIP-CT550 Gig
0/0/1
Cisco-WLC2 Gig 0/3 168 H AIP-CT550 Gig
0/0/2

Cisco-WLC2 Gig 0/1 168 H AIR-CT550
LACInterface0/3/1
Cisco-WLC1 Gig 0/2 123 H AIR-CT500 Gig
0/0/1
Cisco-WLC1 Gig 0/4 123 H AIR-CT500 Gig
0/0/2
Cisco-WLC1 Gig 0/2 123 H AIR-CT500
LACInterface0/3/1
APO1 Fas 0/48 150 T I AIR-AP126 Gig 0.1
IDF1 Fas 0/38 160 R S I WS-C3560- Fas
0/22

CCNP-W#sh ether
CCNP-W#sh etherchannel su
CCNP-W#sh etherchannel summary
Flags: D - down P - bundled in port-
channel
I - stand-alone s - suspended
H - Hot-standby (LACP only)
R - Layer3 S - layer2
U - in use f - failed to allocate
aggregator

M - not in use, minimum links not met
u - unsuitable for bundling
w - waiting to be aggregated
d - default port

Number of channel-groups in use: 2
Number of aggregators: 2

Group Port-channel Protocol Ports
-----|-----|-----|-----
-----|-----|-----|-----
1 Po2 (SU) - Gi0/1(P) Gi0/3(P)
2 Po2 (SU) - Gi0/2(P) Gi0/4(P)

CCNP-W#

```

An access point joins the secondary wireless controller but not the primary wireless controller. Another access point has joined the controller and is working fine. The network engineer can ping the wireless controller and the access point from the core switch. Which option is the cause of the issue?

- A. The trunk ports are missing a spanning tree configuration.
- B. The EtherChannel configuration is incorrect.
- C. The port channels configured with the wrong negotiation protocol.
- D. The trunk port configuration is incorrec

Answer: B

NEW QUESTION 79

You have a single Cisco 5508 WLC with a management IP address of 172.16.24.5/24. You need to register 50 new Cisco AIR-CAP3702I-E-K9. Access Points to the WLC using DHCP option 43. The access points are connected to a switch in VLAN 37, which uses the 172.16.37.0/24 subnet. You have configured the DHCP scope on the switch like this:

Network 172.16.37.0 255.255.255.0

Default Router 172.16.37.1

Option 43 Aseii 172.16.24.5

The access points are failing to join the wireless LAN controller. Which command fixes the issue?

- A. Option 43 Hex F108.CA10.1805
- B. Option 43 Hex F104.AC10.1705
- C. Option 43 Hex F112.CA10.1805
- D. Option 43 Hex F104.AC10.1805

Answer: D

NEW QUESTION 81

Refer to the exhibits. An engineer is troubleshooting connectivity issues on the guest network.

Interface Group Name **guest_int_group**

Description **Guest Interface Group**

Property **Non-Quarantine**

mDNS Profile **none**

Interface Name **lab management**

Add Interface

VLAN Id	Interface Name	
900	vlan-900	<input checked="" type="checkbox"/>
977	vlan-997	<input checked="" type="checkbox"/>
991	vlan-991	<input checked="" type="checkbox"/>
992	vlan-992	<input checked="" type="checkbox"/>
993	vlan-993	<input checked="" type="checkbox"/>
994	vlan-994	<input checked="" type="checkbox"/>
995	vlan-995	<input checked="" type="checkbox"/>
996	vlan-996	<input checked="" type="checkbox"/>
998	vlan-998	<input checked="" type="checkbox"/>
999	vlan-999	<input checked="" type="checkbox"/>

Interfaces				
Interface Name	VLAN Identifier	IP Addresses	Interface Type	Dynamic IP Management
lab management	10	10.10.10.254	Dynamic	Disabled
management	200	10.10.200.254	Static	Enabled
virtual	N/A	192.0.2.1	Static	Not Supported
vlan-1010	1010	10.1.0.9	Dynamic	Disabled
vlan-233	255	10.10.255.254	Dynamic	Disabled
vlan-700	700	10.15.0.202	Dynamic	Disabled
vlan-800	800	10.10.80.3	Dynamic	Disabled
vlan-900	900	10.10.90.5	Dynamic	Disabled
vlan-991	991	10.10.91.5	Dynamic	Disabled
vlan-992	992	10.10.92.5	Dynamic	Disabled
vlan-993	993	10.10.93.5	Dynamic	Disabled
vlan-994	994	10.10.94.5	Dynamic	Disabled
vlan-995	995	10.10.95.5	Dynamic	Disabled
vlan-996	996	10.10.96.5	Dynamic	Disabled
vlan-997	997	10.10.97.5	Dynamic	Disabled
vlan-998	998	10.10.98.5	Dynamic	Disabled
vlan-999	999	10.10.99.5	Dynamic	Disabled

```
!
interface GigabitEthernet1/0/14
Description "Wireless LAN Controller"
switchport trunk allowed vlan 200,255,990-999
switchport mode trunk
spanning-tree portfast trunk
!
```

Which cause of the issue is true?

- A. The spanning-tree portfast trunk command must be removed.
- B. The switchport mode must be configured as access.
- C. The interface group has incorrect mappings.
- D. The trunk port does not have the correct VLANs allowe

Answer: D

NEW QUESTION 86

Which statement about the process of rogue containment performed on a rogue AP and rogue clients is true?

- A. Trusted clients are configured to ignore the rogue AP so that only the rogue clients can connect.
- B. An RF jammer is used to prevent the rogue AP from transmitting.
- C. An authorized AP spoofs de-authentication packets that have the spoofed source address of the rogue AP.
- D. A trusted AP is configured to mimic the rogue AP and to prevent clients from associating to the rogue AP.

Answer: C

NEW QUESTION 89

Refer to the exhibit.

Which option prevents the AP from completing the DTLS join process?

```
*Jan 15 22:29:04.847: AP has SHA2 MIC certificate - Using SHA2 MIC
certificate for DTLS.

*May 8 20:35:13.000: %CAPWAP-5-DTLSREQSEND: DTLS connection
request sent peer_ip: 192.168.10.6 peer_port: 5246
*May 8 20:35:13.207: %DTLS-5-ALERT: Received FATAL : Certificate
unknown alert from 192.168.10.6
*May 8 20:35:13.207: %DTLS-5-SEND_ALERT: Send FATAL : Close notify
Alert to 192.168.10.6:5246
```

- A. The SSC is not authorized.
- B. The root CA is missing on the WLC
- C. The WLC has the incorrect date.
- D. An intermediary CA is missing on the WL

Answer: A

NEW QUESTION 90

Which three options are characteristics of a rogue AP that poses a high-security risk? (Choose three.)

- A. a high RSSI
- B. accepts clients
- C. a foreign SSID
- D. a distant location
- E. open authentication
- F. a low RSSI

Answer: BEF

NEW QUESTION 91

An engineer is attempting to resolve wireless channel overlap issues in the 2.4 GHz network. Which network change reduces channel overlap?

- A. Shut down 802.11b/g/n radios.
- B. Enable 40 MHz channel bonding on 802.11b/g/n.
- C. Enable 802.11b data rates.
- D. Enable all 802.11b/g/n channel

Answer: D

NEW QUESTION 96

You recently deployed an 802.11ac wireless network that contains Cisco Unified Wireless IP Phones 7925G. Users report that the phones intermittently lose connectivity. Which troubleshooting step is the first you must take if you are using the bottom-up troubleshooting methodology?

- A. Review the Cisco WLC log files for authentication failures.
- B. Use a packet sniffer to capture 802.22 frames.
- C. Perform an RF site survey.
- D. Compare the Cisco IOS version of the controller and the phones.

Answer: C

NEW QUESTION 97

Which three options can be configured as roaming triggers on a WGB? (Choose three.)

- A. SNR
- B. co-channel interference

- C. RSSI
- D. packet fragmentation
- E. packet retries
- F. minimum data rate

Answer: CEF

NEW QUESTION 101

All corporate-issued devices in your network have been configured with EAP-TLS authentication. They authenticate via wireless to an instance of Cisco ISE and AD authorization for the user profiles is un-configured. Which impact occurs to the authentication when a user's Active Directory username and password expires?

- A. The ISE prompts the user for the new password.
- B. The user must change the password manually on their WLAN profile.
- C. The WLAN profile must be forgotten and reconfigured.
- D. WLAN connectivity is not impacted because EAP-TLS uses certificate

Answer: D

NEW QUESTION 105

Clients are maintaining association to access points that they were previously connected to rather than roaming to adjacent access points with higher received signal strength. Which two actions can be taken to fix this issue? (Choose two.)

- A. Set DCA channel sensitivity to low.
- B. Utilize Rx-SOP.
- C. Increase access point power.
- D. Enable optimized roaming.
- E. Add access points to the are

Answer: AD

NEW QUESTION 106

Which three components are needed to identify the zone of impact for non-802.11 sources of 2.4 GHz and 5.0 GHz interference? (Choose three.)

- A. WLC
- B. MSE
- C. RF site survey tool
- D. Wi-Fi analyzer
- E. CleanAir AP
- F. spectrum analyzer

Answer: CEF

NEW QUESTION 108

An engineer wants to run the Voice Audit tool in PI and wants to be able to verify: that clients will be capable of having static IPs whether or not Call Admission Control is enabled

Which two rules field descriptions must be checked in the report? (Choose two.)

- A. DHCP assignment
- B. CAC: max bandwidth
- C. ACM
- D. DTPC
- E. load-based CAC

Answer: AE

Explanation:

/Reference:

Reference: https://www.cisco.com/c/en/us/td/docs/net_mgmt/prime/infrastructure/3-2/reference/guide/pi_ref.pdf

NEW QUESTION 112

When designing your wireless network for iOS devices, which two limits of packet loss and jitter ensure stable, quality communication? (Choose two.)

- A. Jitter should be kept to less than 500 ms.
- B. Packet loss should remain under 1 percent.
- C. Packet loss should remain under 5 percent.
- D. Packet loss should remain under 2 percent.
- E. Jitter should be kept to less than 100 m

Answer: BE

Explanation:

Reference: https://www.cisco.com/c/en/us/td/docs/wireless/technology/vowlan/troubleshooting/vowlan_troubleshoot/8_Site_Survey_RF_Design_Valid.pdf

NEW QUESTION 117

You are debugging a WGB client. Which description of the client is true?

- A. disconnected from the wired device
- B. triggered to reauthenticate
- C. disconnected from the authentication server
- D. triggered to roam

Answer: D

NEW QUESTION 121

Which two EAP types are tunneled? (Choose two.)

- A. EAP-MD5
- B. EAP-MSCHAPv2
- C. PAP
- D. EAP-FAST
- E. EAP-MD6

Answer: BD

NEW QUESTION 124

You have designed your wireless network for data coverage. However, as 5 GHz device a client??s increase over legacy 2.4 GHz devices, you observe roaming issues and instability of wireless communication for the newest devices.

Which element will cause this issue?

- A. You have designed for data coverage, but you need a voice design to accommodate 5 GHz devices.
- B. Band Select is ON and steers clients to connect to 2.4 GHZ over 5 GHz.
- C. RRM is ON and favors 2.4 GHz legacy devices.
- D. 5 GHz cell size is smaller than 2.4 GHz cell size, which results in inadequate overlap for 5 GHz clients.

Answer: B

NEW QUESTION 129

.....

Thank You for Trying Our Product

We offer two products:

1st - We have Practice Tests Software with Actual Exam Questions

2nd - Questions and Answers in PDF Format

300-370 Practice Exam Features:

- * 300-370 Questions and Answers Updated Frequently
- * 300-370 Practice Questions Verified by Expert Senior Certified Staff
- * 300-370 Most Realistic Questions that Guarantee you a Pass on Your First Try
- * 300-370 Practice Test Questions in Multiple Choice Formats and Updates for 1 Year

100% Actual & Verified — Instant Download, Please Click
[Order The 300-370 Practice Test Here](#)