

AD0-E104 Dumps

Adobe Experience Manager Architect

<https://www.certleader.com/AD0-E104-dumps.html>



NEW QUESTION 1

A multi-regional retail company has been using a featured product component on their home page with static content. As part of the enhancement the retail company wants to leverage Adobe Target to personalize the featured product displayed only to the users in one region. There is plan to apply this enhancement to additional regions in the near future. It is required to keep the featured product component backward compatible without updating the site content. Which option should the Architect recommend?

- A. Introduce personalization logic to the "featured product" component
- B. Introduce component versioning and proxy component pattern
- C. Use sling:superResourceType and editable templates
- D. Use the out-of-the-box ecommerce component

Answer: B

NEW QUESTION 2

A client states they will have approximately 1 million page views per month with approximately 30% of the traffic being Authenticated/Secure content. The Architect is recommending two Publish servers and a single Dispatcher. What is the purpose of the Dispatcher in this scenario?

- A. Serves as document repository and caching mechanism
- B. Serves as Load Balancer and caching mechanism for non-secure content
- C. Serves as Load Balancer only
- D. Caches Authenticated/Secure content and serves as Load Balancer

Answer: D

NEW QUESTION 3

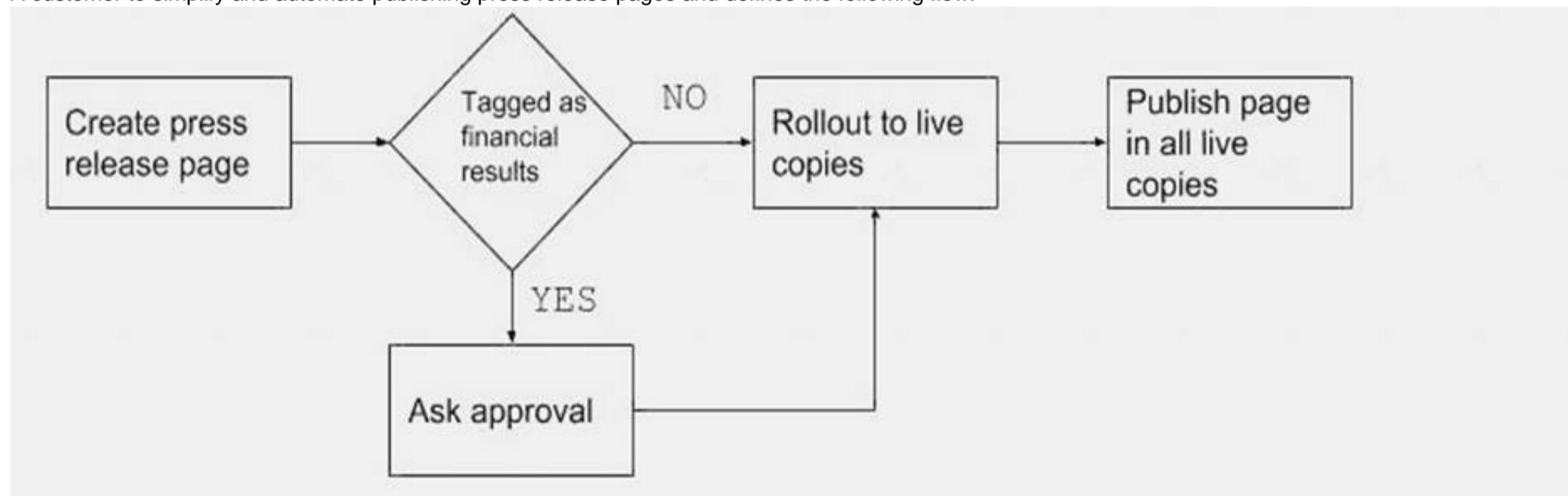
A customer is using AEM 6.4. The Architect is defining "daily" runbook tasks, Which task must be part of the list?

- A. Version Cleanup
- B. Offline compaction
- C. Online compaction
- D. Audit Log Purge

Answer: D

NEW QUESTION 4

A customer to simplify and automate publishing press release pages and defines the following flow:



What should the Architect recommend?

- A. Configure MSM with the "Activate on Blueprint activation" option
- B. Create a custom workflow launches
- C. Advise the customer to use Launches
- D. Implement a Sling event listener that triggers on page creation

Answer: B

NEW QUESTION 5

A customer is reporting spikes in traffic to the dispatcher and is concerned about Denial of Service (DoS) attacks. Which two actions should the Architect take to prevent this from happening? (Choose two.) Restrict the clients that can invalidate the cache

- A. Only allow access and caching of expected mime types
- B. Use mod_rewrite module to perform URL validations
- C. Prevent clickjacking by specifying the X-FRAME-OPTIONS header
- D. Disallow access to any administrative URL

Answer: CD

NEW QUESTION 6

A customer has a large MSM setup with more than 30 languages and 150 websites:

The content authors are frequently updating the master content. MSM is configured with the "Push on modify" rollout configuration so that any changes are immediately pushed to all live copies. The customer is complaining that they encounter performance issues on the AEM Author.

What should the Architect do?

- A. Configure MSM to use "Standard rollout config" with the "On Modification" trigger
- B. Configure MSM to use "Push on modify (shallow)"
- C. Configure MSM to use "Standard rollout config"
- D. Remove the referencesUpdate action from the "Push on modify"

Answer: C

NEW QUESTION 7

A customer wants to implement an AEM solution to serve localized content to several regional websites. Which AEM capability should the Architect recommend?

- A. Use translation connector and translation workflows
- B. Use translation connector and i18N API
- C. Use i18N API and Multi Site Manager
- D. Use translation connector and Multi Site Manager

Answer: D

NEW QUESTION 8

A customer needs to pre-define filtering criteria that can be used on an asset search results in the AEM DAM. What should the Architect recommend?

- A. Add predicates to Search Rail in Search Forms
- B. Overlay Filter Component in Search Results Page
- C. Extend Global Search Field to include filtering criteria
- D. Implement filters using Query Builder API

Answer: C

NEW QUESTION 9

A customer is migrating a large number of assets into the DAM. Some of these assets have special file formats. Which two actions should be taken prior to the migration? (Choose two.)

- A. Disable the workflows
- B. Install the ImageMagick plugin to handle various file formats
- C. Extend the metadata schema
- D. Enable the DAM Update Asset workflow
- E. Configure the taxonomy

Answer: AB

NEW QUESTION 10

An author makes changes to a page. The old version still appears on the site. The Author needs to troubleshoot by bypassing the Dispatcher and accessing the AEM page directly through the Publish instance.

What should the author do?

- A. Modify the AEM Job Processing OSGI configuration
- B. Adjust the allowedClients of the dispatcher
- C. Use CURL to do a manual dispatcher flush
- D. Add a query parameter to the page URL

Answer: D

NEW QUESTION 10

A company wants to train smart tags to recognize a new tag using Adobe Sensei technology. What is the minimum number of images that must be uploaded to meet this requirement?

- A. 10
- B. 50
- C. 100
- D. 30

Answer: D

NEW QUESTION 13

Which AEM pre-deployment action should the Architect do after final UAT testing but prior to a live production launch?

- A. Forecast overall visitor traffic
- B. Stress test all Dispatchers and Publish instances
- C. Execute relevant AEM licensing and maintenance agreements
- D. Understand migration requirements

Answer: B

NEW QUESTION 18

A university offers the same program with courses across multiple campuses and wants to set up their DAM structure that promotes re-use and sharing between the instructors. The Architect needs to define the top-level folders in the DAM hierarchy be within /content/dam/ < top-level folder >
What should the top-level folder be named?

- A. Program Name
- B. Campus Name
- C. Course Name
- D. Instructor Name

Answer: B

NEW QUESTION 19

Which method should be used to extend an existing AEM component for 6.2 and above?

- A. Use Sling Resource Merger to cross define the structures required
- B. Add new dialog boxes and code to the original component
- C. Copy the entire component structure from libs to apps and make changes
- D. Modify the Sling Resource Type on the original component

Answer: A

NEW QUESTION 20

In which two formats is AEM able to export Experience Fragments to Adobe Target? (Choose two.)

- A. HTML
- B. CSV
- C. XML
- D. JavaScript
- E. JSON

Answer: AE

NEW QUESTION 23

A product company has many authors who constantly add/remove products on an author instance and publish them. These products display on a product catalog page. End users report that the catalog page does not always show the latest products. The catalog page does not use any REST APIs or JavaScript. The page needs to be cached. What should the Architect do to resolve this issue?

- A. Use Sling Dynamic Include with Server Side Include (SSI)
- B. Configure a shorter TTL for the page on dispatcher
- C. Configure a shorter max-age value for Cache-Control header
- D. Set statfileslevel property to 1 in dispatcher configuration

Answer: A

NEW QUESTION 27

A large news agency wants to classify, manage, and search content effectively, Which capability should be used to design this solution?

- A. Meta Data Tags
- B. Query Builder
- C. Renditions
- D. Adobe Launch

Answer: A

NEW QUESTION 30

A customer wants to improve efficiencies with their content creation processes for website optimization. Specifically, the customer wants to use content created in AEM inside of Adobe Target.
Which AEM feature should be used to meet the requirements?

- A. Content Fragments
- B. Teaser Component
- C. Experience Fragments
- D. Adobe Target Mbox

Answer: C

NEW QUESTION 32

A customer wants an image to be automatically tagged every time an image is uploaded to the DAM. What should an architect recommend?

- A. Enable smart tagging in the DAM Upload Asset offloading workflow
- B. Run the DAM Smart Tag workflow
- C. Configure enhanced Smart Tagging

D. Configure smart tagging in the DAM Update Asset workflow

Answer: D

NEW QUESTION 35

.....

Thank You for Trying Our Product

* 100% Pass or Money Back

All our products come with a 90-day Money Back Guarantee.

* One year free update

You can enjoy free update one year. 24x7 online support.

* Trusted by Millions

We currently serve more than 30,000,000 customers.

* Shop Securely

All transactions are protected by VeriSign!

100% Pass Your AD0-E104 Exam with Our Prep Materials Via below:

<https://www.certleader.com/AD0-E104-dumps.html>