



Microsoft

Exam Questions MS-600

Building Applications and Solutions with Microsoft 365 Core Services

NEW QUESTION 1

- (Exam Topic 1)

Which type of authentication flow should you recommend for the planned integration with Office 365?

- A. device code
- B. implicit grant
- C. authorization code
- D. client credentials

Answer: C

Explanation:

To use Microsoft Graph to read and write resources on behalf of a user, your app must get an access token from the Microsoft identity platform and attach the token to requests that it sends to Microsoft Graph.

One common flow used by native and mobile apps and also by some Web apps is the OAuth 2.0 authorization code grant flow.

Scenario: Email the generated invoices to customers on behalf of the current signed-in user. Any emails generated by the system will contain the invoiced.

Use Azure AD to manage identities, authentication, and authorization. Reference: <https://docs.microsoft.com/en-us/graph/auth-v2-user>

NEW QUESTION 2

- (Exam Topic 1)

You need to implement the role functionality for the backend web service calls.

Which three actions should you perform in sequence? To answer, move the actions from the list of actions to the answer area and arrange them in the correct order.

Actions

- Upload a certificate for the application registration of the backend web service.
- Modify the manifest that defines the application roles and set Allowed Member Types to **Apps**.
- Modify the manifest that defines the application roles and set Allowed Member Types to **Users**.
- Create a new client secret in the application registration of the backend web service.
- Verify for the role claims in the backend web service.
- Assign the roles to the Azure AD group that contains the users who are mapped to the roles.

➤

➤

Answer Area

- 1
- 2
- 3

- A. Mastered
- B. Not Mastered

Answer: A

Explanation:

Actions

- Upload a certificate for the application registration of the backend web service.
- Modify the manifest that defines the application roles and set Allowed Member Types to **Apps**.
- Modify the manifest that defines the application roles and set Allowed Member Types to **Users**.
- Create a new client secret in the application registration of the backend web service.
- Verify for the role claims in the backend web service.
- Assign the roles to the Azure AD group that contains the users who are mapped to the roles.

➤

➤

Answer Area

- 1 Create a new client secret in the application registration of the backend web service.
- 2 Verify for the role claims in the backend web service.
- 3 Assign the roles to the Azure AD group that contains the users who are mapped to the roles.

NEW QUESTION 3

- (Exam Topic 1)

How can you validate that the JSON notification message is sent from the Microsoft Graph service?

- A. The ClientState must match the value provided when subscribing.
- B. The user_guid must map to a user ID in the Azure AD tenant of the customer.
- C. The tenant ID must match the tenant ID of the customer's Office 365 tenant.
- D. The subscription ID must match the Azure subscription used by ADatum.

Answer: A

Explanation:

clientState specifies the value of the clientState property sent by the service in each notification. The maximum length is 128 characters. The client can check that the notification came from the service by comparing the value of the clientState property sent with the subscription with the value of the clientState property received with each notification.

Note: A subscription allows a client app to receive notifications about changes to data in Microsoft Graph. Reference: <https://docs.microsoft.com/en-us/graph/api/resources/subscription>

NEW QUESTION 4

- (Exam Topic 2)

What should you add to a SharePoint Framework (SPFx) solution to ensure that the solution can be used as a Microsoft Teams tab?

- A. the TeamsTab value to the componentType property in the manifest file
- B. a manifest file to the Teams folder in the solution
- C. the TeamsTab value to the supportedHosts property in the manifest file
- D. a manifest file to the webparts folder in the solution

Answer: D

Explanation:

You need to update the web part manifest to make it available for Microsoft Teams. Locate the manifest json file for the web part you want to make available to Teams and modify the supportedHosts properties to include "TeamsTab".

Reference:

<https://docs.microsoft.com/en-us/sharepoint/dev/spfx/web-parts/get-started/using-web-part-as-msteams-tab>

NEW QUESTION 5

- (Exam Topic 2)

You need to request permission to create a group in a Sharepoint Framework (SPFx) solution. To which file should you add the permission request?

- A. Config.json
- B. Package.json
- C. Serve.json
- D. Package-solution.json

Answer: D

NEW QUESTION 6

- (Exam Topic 2)

What is the default permission scope when you request an access token by using MSGraphClient?

- A. User.Read
- B. People.Read.All
- C. People.Read
- D. User.Read.All

Answer: D

Explanation:

By default, the service principal has no explicit permissions granted to access the Microsoft Graph. However, if you request an access token for the Microsoft Graph, you get a token with the user_impersonation permission

scope that can be used for reading information about the users (that is, User.Read.All). Reference: <https://docs.microsoft.com/en-us/sharepoint/dev/spfx/use-msgraph>

NEW QUESTION 7

- (Exam Topic 2)

You are building a single-page application (SPA) that will have the following parameters:

- App Id: DBA22F72-64PA4C44-AA2C-FAA0DA5A471B
- Tenant Id: DC045C4D-5881-43C7-97AB-3C5A1ADB8DBC
- AppName: Contoso.Spa

You have a line-of-business API for invoicing that is secured by using the Microsoft identity platform. The API has the following parameters:

- * App Id: 8/9A43D7-1794-47A0-AB2B-440B63FEC248
- * Tenant Id: DC04SC4D S881-43C7-97AB 3C5A1ADB8DBC
- * AppName: Contoso.Invoicing

Contoso.Invoicing declares the following custom scopes:

- * Invoices-Read
- * Invoices. Read Write

Contoso.Spa needs to call Contoso.Invoicing to create new invoices.

Which code should you use in Contoso.Spa to obtain an access token for Contoso.Invoicing? To answer, select the appropriate options in the answer area.

NOTE: Each correct select is worth one point.

Answer Area

```
const app = new UserAgentApplication({
  auth: {
    clientId: 'DBA22F72-642A-4C44-AA2C-FAA0DA5A471B',
    clientId: '879A43D7-1794-47A0-AB2B-440B63FEC248',
    clientId: 'DC045C4D-5881-43C7-97AB-3C5A1ADB8DBC',
    authority: 'https://login.microsoftonline.com/DBA22F72-642A-4C44-AA2C-FAA0DA5A471B/',
    authority: 'https://login.microsoftonline.com/879A43D7-1794-47A0-AB2B-440B63FEC248/',
    authority: 'https://login.microsoftonline.com/DC045C4D-5881-43C7-97AB-3C5A1ADB8DBC/',
  },
  system: {
    logger: new Logger(this.logger)
  },
  cache: {cacheLocation: "localStorage"}
});

const response = await app.acquireTokenSilent({
  scopes: ['api://879A43D7-1794-47A0-AB2B-440B63FEC248/Invoices.Read'],
  scopes: ['api://879A43D7-1794-47A0-AB2B-440B63FEC248/Invoices.ReadWrite'],
  scopes: ['api://DBA22F72-642A-4C44-AA2C-FAA0DA5A471B/Invoices.ReadWrite'],
  scopes: ['api://DC045C4D-5881-43C7-97AB-3C5A1ADB8DBC/Invoices.Read'],
  scopes: ['Invoices.Read'],
  scopes: ['Invoices.ReadWrite']
});
```

- A. Mastered
 B. Not Mastered

Answer: A

Explanation:

Answer Area

```
const app = new UserAgentApplication({
  auth: {
    clientId: 'DBA22F72-642A-4C44-AA2C-FAA0DA5A471B',
    clientId: '879A43D7-1794-47A0-AB2B-440B63FEC248',
    clientId: 'DC045C4D-5881-43C7-97AB-3C5A1ADB8DBC',
    authority: 'https://login.microsoftonline.com/DBA22F72-642A-4C44-AA2C-FAA0DA5A471B/',
    authority: 'https://login.microsoftonline.com/879A43D7-1794-47A0-AB2B-440B63FEC248/',
    authority: 'https://login.microsoftonline.com/DC045C4D-5881-43C7-97AB-3C5A1ADB8DBC/',
  },
  system: {
    logger: new Logger(this.logger)
  },
  cache: {cacheLocation: "localStorage"}
});

const response = await app.acquireTokenSilent({
  scopes: ['api://879A43D7-1794-47A0-AB2B-440B63FEC248/Invoices.Read'],
  scopes: ['api://879A43D7-1794-47A0-AB2B-440B63FEC248/Invoices.ReadWrite'],
  scopes: ['api://DBA22F72-642A-4C44-AA2C-FAA0DA5A471B/Invoices.ReadWrite'],
  scopes: ['api://DC045C4D-5881-43C7-97AB-3C5A1ADB8DBC/Invoices.Read'],
  scopes: ['Invoices.Read'],
  scopes: ['Invoices.ReadWrite']
});
```

NEW QUESTION 8

- (Exam Topic 2)

You have an API that is secured by using Azure Active Directory (Azure AD). You are designing a SharePoint Framework (SPFx) solution. Which object should you use to connect to the API from the solution?

- A. SPHttpClient
 B. HttpClient
 C. AadHttpClient

Answer: C

Explanation:

By using the AadHttpClient, you can easily connect to APIs secured by using Azure AD without having to implement the OAuth flow yourself.
 Reference: <https://docs.microsoft.com/en-us/sharepoint/dev/spfx/use-aadhttpclient>

NEW QUESTION 9

- (Exam Topic 2)

You are developing an application that will run as an overnight background service on a server. The service will access web-hosted resources by using the application's identity and the OAuth 2.0 client credentials grant flow.

You register the application and grant permissions. The tenant administrator grants admin consent to the application.

You need to get the access token from Azure Active Directory (Azure AD).

Which URI should you use for the POST request? To answer, select the appropriate options in the answer area.

NOTE: Each correct selection is worth one point.

`https://login.microsoftonline.com/<TenantId>/oauth2/v2.0/`

`?client_id=<ClientID>`
`&client_secret=<ClientSecret>`
`&scope=https://graph.microsoft.com/.default`
`&grant_type=`

authorization_code
 client_credentials
 on_behalf_of
 refresh_token
 urn:ietf:params:oauth:grant-type:jwt-bearer

authorize
 code
 keys
 token

- A. Mastered
- B. Not Mastered

Answer: A

Explanation:

OAuth2 client_id client_secret

The authorization code flow begins with the client directing the user to the /authorize endpoint. Box 1: token

Use the authorization code to request an access token.

Now that you've acquired an authorization code and have been granted permission by the user, you can redeem the code for an access token to the desired resource, by sending a POST request to the /token endpoint:

Box 2: authorization_code

Use the authorization code to request an access token. Example:

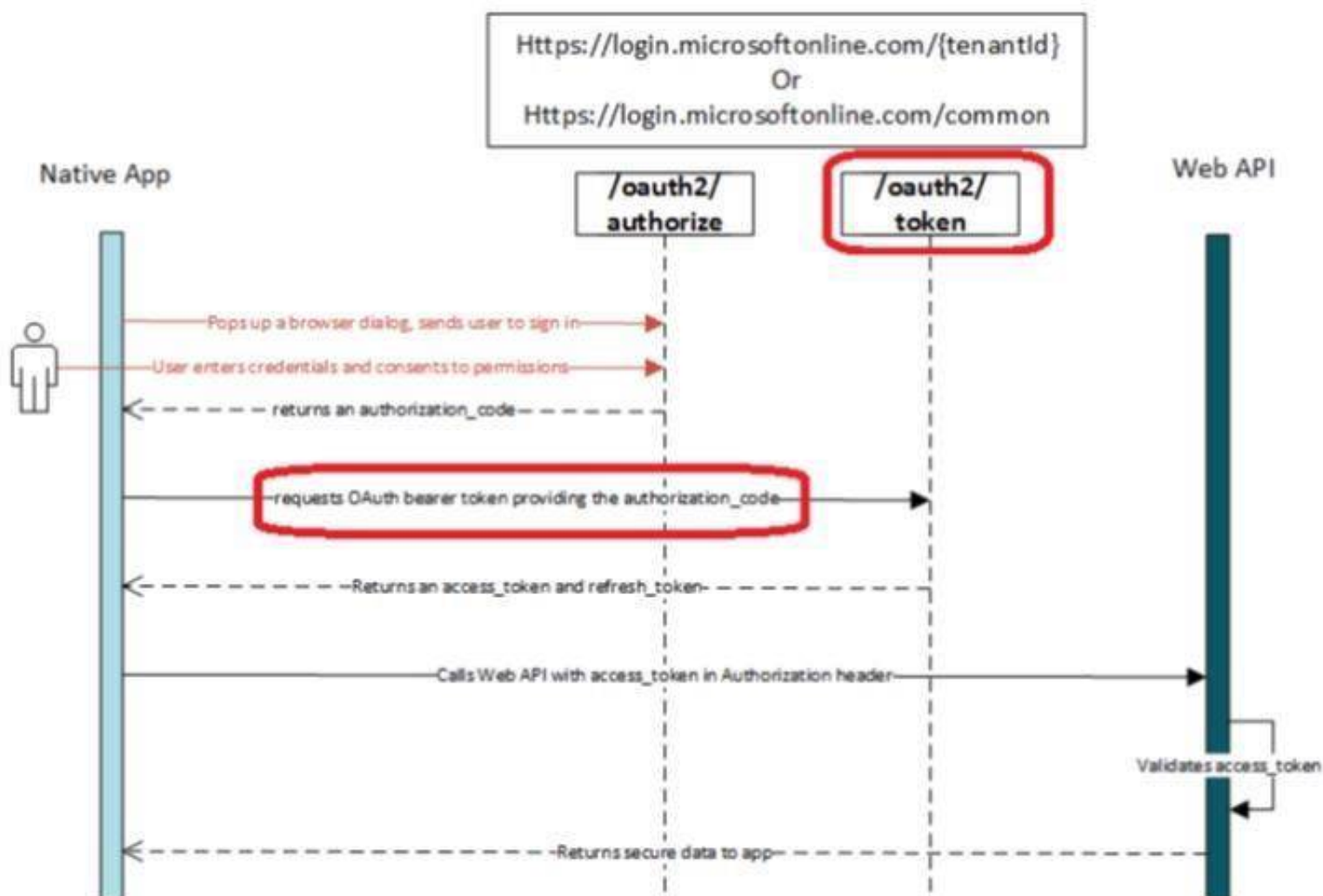
// Line breaks for legibility only

POST /{tenant}/oauth2/token HTTP/1.1 Host: https://login.microsoftonline.com

Content-Type: application/x-www-form-urlencoded grant_type=authorization_code

etc.

Note: At a high level, the entire authorization flow for an application looks a bit like this:



Reference: <https://docs.microsoft.com/en-us/azure/active-directory/develop/v1-protocols-oauth-code>

NEW QUESTION 10

- (Exam Topic 2)

You are developing a Microsoft Teams application.

Which Teams feature provides you with the ability to invoke a model popup by using the minimum amount of custom code?

- A. An adaptive card
- B. A bot
- C. A connector
- D. A task module

Answer: B

NEW QUESTION 10

- (Exam Topic 2)

You need to develop a client-side web app that will be registered with the Microsoft identity platform. Which type of authorization flow should you use?

- A. authorization code grant
- B. device code grant
- C. implicit grant
- D. client credentials grant

Answer: A

NEW QUESTION 15

- (Exam Topic 2)

For each of the following statements, select Yes if the statement is true. Otherwise, select No.

NOTE: Each correct selection is worth one point.

Statements	Yes	No
A Microsoft Office Add-in manifest must be stored in Azure Directory (Azure AD).	<input type="radio"/>	<input type="radio"/>
A Microsoft Office Add-in manifest must be in the JSON format.	<input type="radio"/>	<input type="radio"/>
A Microsoft Office Add-in manifest must contain a URL that points to the location that hosts the add-in.	<input type="radio"/>	<input type="radio"/>

- A. Mastered
- B. Not Mastered

Answer: A

Explanation:

Box 1: No

Box 2: No

The manifest is in XML format.

Box 3: Yes

SourceLocation is required and specifies the source file location(s) for your Office Add-in as a URL between 1 and 2018 characters long. The source location must be an HTTPS address, not a file path.

References: <https://docs.microsoft.com/en-us/office/dev/add-ins/develop/add-in-manifests> <https://docs.microsoft.com/en-us/office/dev/add-ins/reference/manifest/sourcelocation>

NEW QUESTION 16

- (Exam Topic 2)

HOTSPOT

You are developing an interactive invoicing application that will be used by end users. The application will have the following features:

- > Save invoices generated by a user to the user's Microsoft OneDrive.
- > Email daily automated reminders.

You need to identify which permissions to grant for the application features. The solution must use the principle of least privilege.

Which permission should you grant for each feature? To answer, select the appropriate options in the answer area.

NOTE: Each correct selection is worth one point.

Save invoices

	▼
Administrator	
Application	
Delegated	
Super User	

Send automated reminder's

	▼
Administrator	
Application	
Delegated	
Super User	

- A. Mastered
- B. Not Mastered

Answer: A

Explanation:

Microsoft identity platform supports two types of permissions: delegated permissions and application permissions.

Box 1: Delegated

➤ Delegated permissions are used by apps that have a signed-in user present. For these apps, either the user or an administrator consents to the permissions that the app requests, and the app is delegated permission to act as the signed-in user when making calls to the target resource.

Box 2: Application

➤ Application permissions are used by apps that run without a signed-in user present; for example, apps that run as background services or daemons. Application permissions can only be consented by an administrator.

Reference: <https://docs.microsoft.com/en-us/azure/active-directory/develop/v2-permissions-and-consent>

NEW QUESTION 20

- (Exam Topic 2)

You are developing a front end web app.

You want to display the current username as part of the user interface.

You need to retrieve the current username from Microsoft Graph by using a REST request. The solution must minimize the amount of information returned.

To which URI should you send the request?

https://graph.microsoft.com/v1.0/users/john@contoso.com/people?\$select=displayName
https://graph.microsoft.com/v1.0/me?\$search=displayName
https://graph.microsoft.com/v1.0/me
https://graph.microsoft.com/v1.0/me?\$select=displayName

- A. Option A
- B. Option B
- C. Option C
- D. Option D

Answer: A

NEW QUESTION 23

- (Exam Topic 2)

You use Azure Active Directory (Azure AD) to store user identities. The user profile information is inconsistently populated.

You need to develop a web app that will provide users with a page where they can enter their interests, skill, and description. When the user click the submit button, the app will use Microsoft graph to send the data to Azure AD.

Which HTTP method should you use against the Microsoft graph endpoint?

- A. PUT
- B. POST
- C. PATCH
- D. GET

Answer: A

NEW QUESTION 24

- (Exam Topic 2)

Note: This question is part of a series of questions that present the same scenario. Each question in the series contains a unique solution that might meet the

stated goals. Some question sets have more than one correct solution, while others might not have a correct solution. After you answer a question in this section, you will NOT be able to return to it. As a result, these questions will not appear in the review screen. You are developing a new application named App1 that uses the Microsoft identity platform to authenticate to Azure Active Directory (Azure AD). Currently, App1 can read user profile information. You need to allow App1 to read the user's calendar. Solution: In the code of App1, dynamically request the Calendar.Read permission from the Microsoft Graph API. Does this meet the goal?

- A. Yes
- B. No

Answer: B

Explanation:

For your app to access data in Microsoft Graph, the user or administrator must grant it the correct permissions via a consent process.

Application permissions can only be consented by an administrator.

References: <https://docs.microsoft.com/en-us/azure/active-directory/develop/v2-permissions-and-consent> <https://docs.microsoft.com/en-us/graph/permissions-reference>

NEW QUESTION 29

- (Exam Topic 2)

You are building a server-based web app that will use OAuth2 and will be registered with the Microsoft identity platform.

Which two values does the app require to obtain tokens from the Azure Active Directory (Azure AD) authorization endpoint? Each correct answer presents part of the solution.

NOTE: Each correct selection is worth one point.

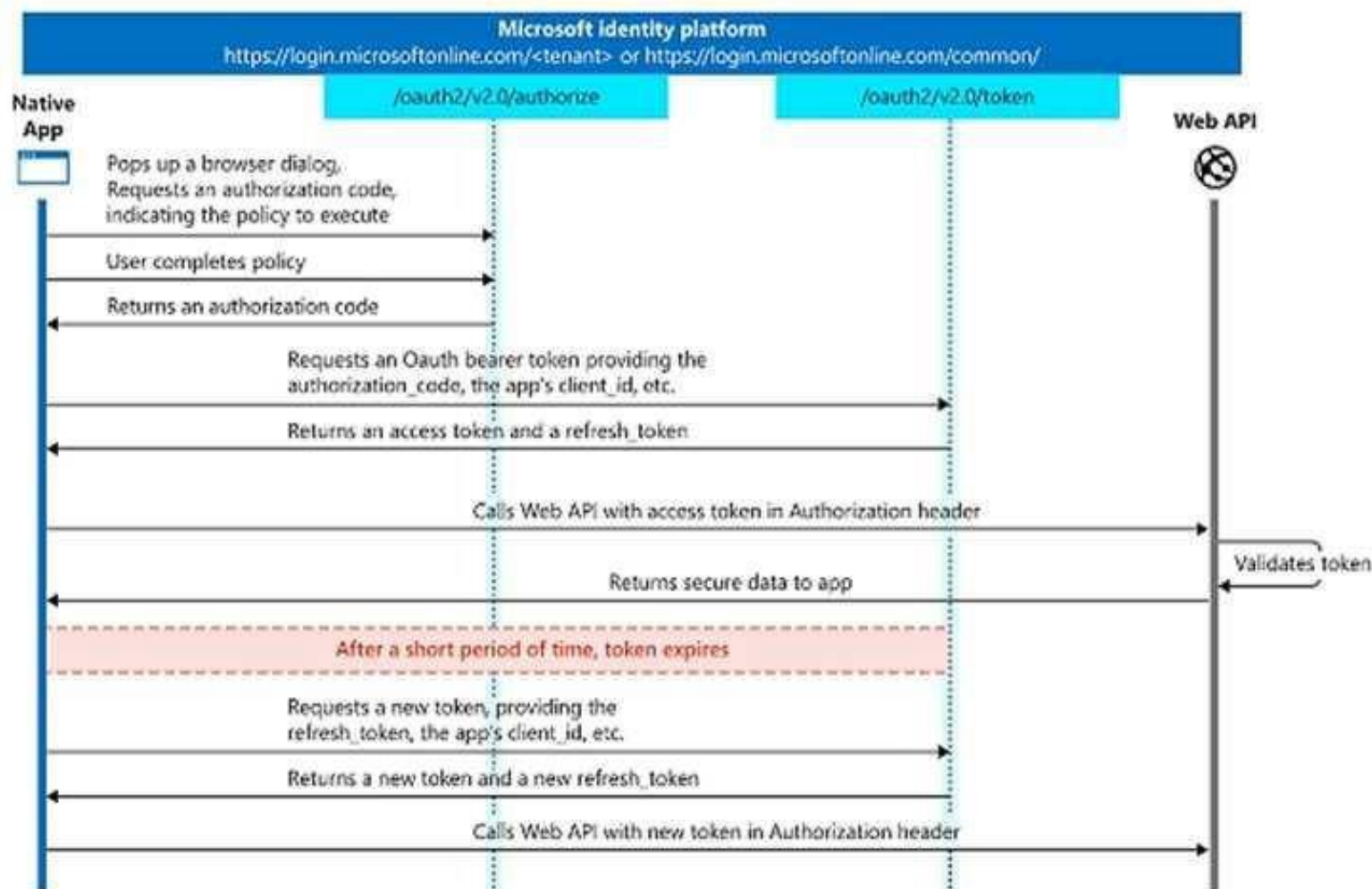
- A. the tenant ID
- B. the context token
- C. the application ID
- D. the application secret
- E. the authorization code

Answer: CE

Explanation:

C: The required client_id is the Application (client) ID that the Azure portal – App registrations experience assigned to your app.

E: The authorization code flow begins with the client directing the user to the /authorize endpoint.



Reference: <https://docs.microsoft.com/en-us/azure/active-directory/develop/v2-oauth2-auth-code-flow>

NEW QUESTION 30

- (Exam Topic 2)

You have a line-of-business API that is secured by using Azure Active Directory (Azure AD). You deploy a solution to the app catalog. The solution requests permission to the API.

What should you do in the SharePoint admin center to ensure that the solution can access the API?

- A. Create a SharePoint security group and add the solution
- B. Create an access policy
- C. Enable sandbox solutions
- D. Approve a pending permission request

Answer: D

Explanation:

Developers building a SharePoint Framework solution that requires access to specific resources secured with Azure AD list these resources along with the required permission scopes in the solution manifest. When deploying the solution package to the app catalog, SharePoint creates permission requests and prompts the administrator to manage the requested permissions. For each requested permission, tenant administrators can decide whether they want to grant or deny the specific permission.

All permissions are granted to the whole tenant and not to a specific application that has requested them. When the tenant administrator grants a specific permission, it is added to the SharePoint Online Client Extensibility Azure AD application, which is provisioned by Microsoft in every Azure AD and which is used by the SharePoint Framework in the OAuth flow to provide solutions with valid access tokens.

NEW QUESTION 35

- (Exam Topic 2)

This question requires that you evaluate the underlined BOLD text to determine if it is correct.

You can use App Studio for Microsoft Teams to develop all the components of a bot application.

Instructions: Review the underlined text. If it makes the statement correct, select “No change is needed”. If the statement is incorrect, select the answer choice that makes the statement correct.

A. No change is needed

B. configure a Teams tab in an application

C. develop a SharePoint Framework (SPFx) web part

D. provision a bot by using the Bot Framework

Answer: B

Explanation:

Tabs provide a place for you to display for rich interactive web content. You can define both personal and team tabs. There can be only 1 team tab per app, but up to 16 personal tabs per app.

Reference: <https://blog.thoughtstuffs.co.uk/2019/04/what-is-app-studio-in-microsoft-teams-and-why-do-i-care/>

NEW QUESTION 36

- (Exam Topic 2)

You have a SharePoint Framework (SPFx) 1.5 solution.

You need to ensure that the solution can be used as a tab in Microsoft Teams. What should you do first?

A. Convert the solution to use the Bot Framework

B. Deploy the solution to a developer site collection

C. Deploy the solution to the Microsoft AppSource store

D. Upgrade the solution to the latest version of SPFx

Answer: D

Explanation:

Starting with the SharePoint Framework v1.8, you can implement your Microsoft Teams tabs using SharePoint Framework.

Reference: <https://docs.microsoft.com/en-us/sharepoint/dev/spfx/web-parts/get-started/using-web-part-as-msteams-tab>

NEW QUESTION 37

- (Exam Topic 2)

You have a SharePoint Framework (SPFx) web part that displays the weather. Users can set the city within the web part. Which component is invoked to provide the users with the ability to configure the settings for the web part?

A. a custom control

B. the property pane

C. the Application Customizer

D. a library component

Answer: B

NEW QUESTION 38

- (Exam Topic 2)

You plan to create a Microsoft Teams application that uses action-based messaging extensions. For each of the following statements, select Yes if the statement is true. Otherwise, select No. NOTE: Each correct selection is worth one point.

Answer Area	Statements	Yes	No
	A Teams application can have multiple action-based messaging extensions.	<input type="radio"/>	<input type="radio"/>
	Action-based messaging extensions can contain unlimited commands.	<input type="radio"/>	<input type="radio"/>
	Action-based messaging extensions can use the Bot Framework to collect information from users.	<input type="radio"/>	<input type="radio"/>

A. Mastered

B. Not Mastered

Answer: A

Explanation:

Answer Area	Statements	Yes	No
	A Teams application can have multiple action-based messaging extensions.	<input type="radio"/>	<input checked="" type="radio"/>
	Action-based messaging extensions can contain unlimited commands.	<input type="radio"/>	<input checked="" type="radio"/>
	Action-based messaging extensions can use the Bot Framework to collect information from users.	<input checked="" type="radio"/>	<input type="radio"/>

NEW QUESTION 43

- (Exam Topic 2)

You are developing a human resources application that will show users where they are in their company's organization chart.

You are adding a new feature that will display the name of a user's manager inside the application.

You need to create a REST query to retrieve the information. The solution must minimize the amount of data retrieved.

Which query should you use?

- A. GET [https://graph.microsoft.com/v1.0/users/{UserPrincipalName}/manager?\\$select=displayName](https://graph.microsoft.com/v1.0/users/{UserPrincipalName}/manager?$select=displayName)
- B. GET [https://graph.microsoft.com/v1.0/users/{UserPrincipalName}/people?\\$filter=jobTitle eq 'manager'&\\$select=displayName](https://graph.microsoft.com/v1.0/users/{UserPrincipalName}/people?$filter=jobTitle eq 'manager'&$select=displayName)
- C. GET [https://graph.microsoft.com/v1.0/users/{UserPrincipalName}/contacts?\\$filter=jobTitle eq 'manager'](https://graph.microsoft.com/v1.0/users/{UserPrincipalName}/contacts?$filter=jobTitle eq 'manager')
- D. GET <https://graph.microsoft.com/v1.0/users/{UserPrincipalName}/manager>

Answer: A

Explanation:

Get user's manager. Returns the user or organizational contact assigned as the user's manager. Syntax:

GET /me/manager

GET /users/{id | userPrincipalName}/manager

Only the name of the user's manager should be displayed so we use ?select=displayname

To specify a different set of properties to return than the default set provided by the Graph, use the \$select query option. The \$select option allows for choosing a subset or superset of the default set returned.

References: <https://docs.microsoft.com/en-us/graph/api/user-list-manager> https://developer.microsoft.com/en-us/graph/docs/overview/query_parameters

NEW QUESTION 44

- (Exam Topic 2)

You are developing an Azure function to provision a team in Microsoft Teams.

You need to create a group named Project A, add a classification of Private to the group, and then convert Project A to a team group.

How should you complete the REST requests? To answer, select the appropriate options in the answer area. NOTE: Each correct selection is worth one point.

Request 1:

	▼	https://graph.microsoft.com/v1.0/groups
GET		
PATCH		
POST		
PUT		

```
{
  "description": "",
  "displayName": "Project A",
  "groupTypes": ["Unified"],
  "mailEnabled": true,
  "mailNickname": "projecta",
  "securityEnabled": "projecta",
  "securityEnabled": false
}
```

Request 2:

	▼	https://graph.microsoft.com/v1.0/groups/{GroupID}
GET		
PATCH		
POST		
PUT		

```
{
  "classification": "Private"
}
```

Request 3:

	▼	https://graph.microsoft.com/v1.0/groups/{GroupID}/team
GET		
PATCH		
POST		
PUT		

```
{
  "memberSettings": {
    "allowCreateUpdateChannels": true
  }
}
```

- A. Mastered
- B. Not Mastered

Answer: A

Explanation:

Box 1: post

You need to create a group named Project A.

The following example creates an Office 365 group. POST <https://graph.microsoft.com/v1.0/groups> Content-type: application/json

Content-length: 244

```
{
  "description": "Self help community for library", "displayName": "Library Assist",
  "groupTypes": [ "Unified"
],
  "mailEnabled": true, "mailNickname": "library", "securityEnabled": false
}
```

Box 2: PATCH

Add a classification of Private to the group.

You can set the classification property in a PATCH request for the group, if do not set it in the initial POST request that creates the group.

Box 3: put

Then convert Project A to a team group. Syntax: PUT [/groups/{id}/team](https://graph.microsoft.com/v1.0/groups/{id}/team)

References: <https://docs.microsoft.com/en-us/graph/api/group-post-groups> <https://docs.microsoft.com/en-us/graph/api/resources/group>

<https://docs.microsoft.com/en-us/graph/api/team-put-teams>

NEW QUESTION 46

- (Exam Topic 2)

You are building email notifications for an expensing system.

When a user receives an email notification, the email will contain a comment field. When the user submits a comment, the data will be returned to the expensing system for processing.

What should you do to implement the notification by using the minimum amount of development effort?

- A. Create a Microsoft Office Add-in that has an action pane to display the notifications
- B. Leverage Microsoft Graph notifications
- C. Leverage the Azure SignalR Service and implement web notifications
- D. Configure the expensing system to send actionable messages

Answer: D

Explanation:

Whether you are filling out a survey, approving an expense report, or updating a CRM sales opportunity, Actionable Messages enable you to take quick actions right from within Outlook. Developers can now embed actions in their emails or notifications, elevating user engagement with their services and increasing organizational productivity.

Office 365 provides two solutions to enhance productivity with Outlook Actionable Messages: actionable messages via email, and actionable messages via Office 365 Connectors.

Reference: <https://docs.microsoft.com/en-us/outlook/actionable-messages/>

NEW QUESTION 51

- (Exam Topic 2)

You develop a web API named WebApi1.

When validating a token received from a client application, WebApi1 receives a `MsalUiRequiredException` exception from Azure Active Directory (Azure AD).

You need to formulate the response that WebApi1 will return to the client application. Which HTTP response should you send?

- A. HTTP 307 Temporary Redirect
- B. HTTP 400 Bad Request
- C. HTTP 403 Forbidden
- D. HTTP 412 Precondition Failed

Answer: D

Explanation:

The HyperText Transfer Protocol (HTTP) 412 Precondition Failed client error response code indicates that access to the target resource has been denied. This happens with conditional requests on methods other than GET or HEAD when the condition defined by the `If-Unmodified-Since` or `If-None-Match` headers is not fulfilled. In that case, the request, usually an upload or a modification of a resource, cannot be made and this error response is sent back.

`MsalUiRequiredException`

The "Ui Required" is proposed as a specialization of `MsalServiceException` named `MsalUiRequiredException`. This means you have attempted to use a non-interactive method of acquiring a token (e.g. `AcquireTokenSilent`), but MSAL could not do it silently. this can be because:

- > you need to sign-in
- > you need to consent
- > you need to go through a multi-factor authentication experience.

The remediation is to call `AcquireTokenInteractive` try

```
{
app.AcquireTokenXXX(scopes, account) WithYYYY(...)
ExecuteAsync()
}
catch(MsalUiRequiredException ex)
{
app.AcquireTokenInteractive(scopes) WithAccount(account)
WithClaims(ex.Claims) ExcecuteAsync();
}
```

NEW QUESTION 53

- (Exam Topic 2)

You are designing a custom SharePoint Framework (SPFx) web part that will be deployed to modern Microsoft SharePoint sites.

You need to ensure that all the web part fields and controls adopt the theme of the site when you deploy the web part.

What should you use to develop the web part?

- A. Material-UI
- B. Office UI Fabric React
- C. HTML 5.0 and CSS
- D. Fluid Framework

Answer: B

Explanation:

Office UI Fabric is Microsoft's official front end framework for building User Interface experiences for Office and Office 365. In simple terms it gives you the look and feel for your component. Moreover, they are open source, mobile responsive and reusable, no need to create from scratch just refer them in your code and start utilizing them.

Microsoft modern SharePoint out of the box webparts are made up these Office UI Fabric framework, so to maintain consistency look and feel as like Office it's better to use these components in our custom SPFx webparts.

Reference:

<http://www.sharepointsamples.com/sharepoint-framework-webpart-with-office-ui-fabric-react-component/>

NEW QUESTION 54

- (Exam Topic 2)

This question requires that you evaluate the underlined text to determine if it is correct.

Microsoft Visual Studio Code contains samples that you can use to quickly prototype a Microsoft Office Web Add-in for Microsoft Word.

Instructions: Review the underlined text. If it makes the statement correct, select "No change is needed." If the statement is incorrect, select the answer choice that makes the statement correct.

- A. No change is needed.
- B. Microsoft AppSource
- C. The Office UI Fabric
- D. The Script Lab add-in

Answer: D

NEW QUESTION 58

- (Exam Topic 2)

You are developing an application that will track changes to the UserPrincipalName attribute of Microsoft 365 accounts.

You need to use a REST request to retrieve the information by using Microsoft Graph. The solution must minimize the amount of data retrieved.

What should you do?

- A. Use GET <https://graph.microsoft.com/v1.0/users/delta> for the first call
- B. Use the state token in subsequent calls.
- C. Use GET [https://graph.microsoft.com/v1.0/users/delta?\\$select=UserPrincipalName](https://graph.microsoft.com/v1.0/users/delta?$select=UserPrincipalName) for the first call
- D. Use the state token in subsequent calls.
- E. Use GET [https://graph.microsoft.com/v1.0/users?\\$select=UserPrincipalName](https://graph.microsoft.com/v1.0/users?$select=UserPrincipalName) for the calls and track the changes.
- F. Use GET <https://graph.microsoft.com/v1.0/users> for the calls and track the changes.

Answer: B

Explanation:

Use delta query to track changes in a resource collection

The typical call pattern is as follows: application begins by calling a GET request with the delta function on the desired resource.

> Microsoft

> The Graph sends a response containing the requested resource and a state token.

Example: Selecting three properties

The next example shows the initial request selecting three properties for change tracking, with default response behavior.

Note: Delta query enables applications to discover newly created, updated, or deleted entities without performing a full read of the target resource with every request.

Reference: <https://docs.microsoft.com/en-us/graph/api/user-delta>

NEW QUESTION 62

- (Exam Topic 2)

You receive the following JSON document when you use Microsoft Graph to query the current signed-in user.

```
{
  "@odata.context": "https://graph.microsoft.com/v1.0/$metadata#users/$entity",
  "businessPhones": [
    "+1 555 444 222"
  ],
  "displayName": "BenSmith",
  "givenName": "Ben",
  "jobTitle": "Developer",
  "mail": "ben.smith@contoso.com",
  "mobilePhone": "+1 555 444 222",
  "officeLocation": null,
  "preferredLanguage": null,
  "surname": "Smith",
  "userPrincipalName": "ben.smith@contoso.com",
  "id": "5fa74bb7-b45b-426d-8ac7-446f090feeb5"
}
```

For each of the following statements, select Yes if the statement is true. Otherwise, select No. NOTE: Each correct selection is worth one point.

Statements	Yes	No
If you query a URI of https://graph.microsoft.com/v1.0/me/photo/\$value , you will get the profile picture.	<input type="radio"/>	<input type="radio"/>
If you query a URI of https://graph.microsoft.com/v1.0/users/ben.smith@contoso.com/photo/\$value , you will get the profile picture.	<input type="radio"/>	<input type="radio"/>
If you query a URI of https://graph.microsoft.com/v1.0/users/5fa74bb7-b45b-426d-8ac7-446f090feeb5/photo/\$value , you will get the profile picture.	<input type="radio"/>	<input type="radio"/>

- A. Mastered
- B. Not Mastered

Answer: A

Explanation:

Box 1: Yes

Syntax: GET /me/photo/\$value

Get the specified profilePhoto or its metadata (profilePhoto properties). Example: Get the photo for the signed-in user in the largest available size GET

[https://graph.microsoft.com/v1.0/me/photo/\\$value](https://graph.microsoft.com/v1.0/me/photo/$value)

Box 2: Yes

Syntax: GET /users/{id | userPrincipalName}/photo/\$value

Get the specified profilePhoto or its metadata (profilePhoto properties). Box 3: Yes

Syntax: GET /users/{id | userPrincipalName}/photo/\$value

Get the specified profilePhoto or its metadata (profilePhoto properties). Reference: <https://docs.microsoft.com/en-us/graph/api/profilephoto-get>

NEW QUESTION 66

- (Exam Topic 2)

When developing a tab in Microsoft teams, personal, group, and shared tabs can all be implemented as configurable tabs.

Instructions: Review the underlined BOLD text, if it makes the statement correct, select " No change is needed if the statement is incorrect select the answer choice that makes the statement correct.

- A. No change is needed.
- B. Share the same code
- C. Be used in a conversation
- D. Have a configuration panel

Answer: A

NEW QUESTION 70

- (Exam Topic 2)

You plan to deploy a SharePoint Framework (SPFx) solution to the tenant app catalog.

Which attribute should you configure in the package-solution.json file to ensure that the solution is available immediately to all site collections?

- A. skipFeatureDeployment
- B. zippedPackage
- C. ClientSideComponentId
- D. isDomainIsolated

Answer: A

Explanation:

You can configure your SharePoint Framework components to be immediately available across the tenant when the solution package is installed to the tenant app catalog. This can be configured by using the skipFeatureDeployment attribute in the package-solution.json file.

Reference: <https://docs.microsoft.com/en-us/sharepoint/dev/spfx/tenant-scoped-deployment>

NEW QUESTION 73

- (Exam Topic 2)

You are developing an application that will use Microsoft Graph.

You attempt to retrieve a list of the groups in your organization by using a URI of <https://graph.microsoft.com/v1.0/groups> on behalf of the user.

The application fails. The diagnostic logs show the following information:

- * An HTTP 403 Forbidden status code
- * An Authorization_RequestDenied error code
- * The following error message: "Insufficient privileges to complete the operation."

You need to ensure that the application can retrieve the list of groups. The solution must use the principle of least privilege. Which two actions should you perform?

Each correct answer presents part of the solution.

NOTE; Each correct selection is worth one point.

- A. In the permission request for the application, request the Group.Read
- B. Request the Group.Read.All permission.
- C. All permission.
- D. Grant tenant admin consent for the Group.Read.All permission.
- E. All permission.
- F. Configure the application to use application permissions.
- G. In the permission request for the application, request the Group.Read.All permission.
- H. Request the Group.Read.All permission.
- I. All permission

Answer: AD

NEW QUESTION 75

- (Exam Topic 2)

You have a backend service that will access the Microsoft Graph API.

You need to configure the service to authenticate by using the most secure authentication method. What should you configure the service to use?

- A. a certificate
- B. a client secret
- C. a shared key
- D. a hash

Answer: A

Explanation:

You can authenticate to the Graph API with two primary methods: AppId/Secret and certificate based authentication. Certificate is the preferred and more secure way of authenticating.

Reference: <https://adamtheautomator.com/microsoft-graph-api-powershell/>

NEW QUESTION 80

- (Exam Topic 2)

You have an application that employees use to schedule vacations. The application sets an automatic reply and an out-of-office event in the employees' Microsoft 365 calendar.

Employees who access the application from a mobile device report that the application is slow to make changes.

You need to replace the application calls to use batched request. Automatic reply must be set only if an out-of-office event is set successfully.

How should you complete the batch request? To answer, select the appropriate options in the answer area.

Answer Area

DELETE
GET
HEAD
PATCH
POST
PUT

https://graph.microsoft.com/v1.0/\$batch
 These are the selections for the first missing value.
 application/json

```

"requests": [
  {
    "id": "1",
    "method": "DELETE",
    "url": "/me/event",
    "body": {
      "subject": "on vacation",
      "showAs": "oof",
      "start": {
        "dateTime": "2019-08-27T14:49:06.595Z",
        "timeZone": "UTC"
      },
      "headers": {
        "Content-Type": "application/json"
      }
    },
    "dependsOn": [
      {
        "id": "2",
        "url": "/me/mail",
        "method": "POST",
        "body": {
          "automaticRepliesSetting": {
            "status": "Scheduled",
            "scheduledStartTime": {
              "dateTime": "2020-03-20T18:00:00.0000000",
              "timeZone": "UTC"
            },
            "scheduledEndTime": {
              "dateTime": "2020-03-26T18:00:00.0000000",
              "timeZone": "UTC"
            }
          }
        },
        "headers": {
          "Content-Type": "application/json"
        }
      }
    ]
  }
]
  
```

- A. Mastered
- B. Not Mastered

Answer: A

Explanation:

Answer Area



```

https://graph.microsoft.com/v1.0/$batch
There are the selections for the first missing value.
application/json

{
  "requests": [
    {
      "id": "1",
      "method": "DELETE",
      "url": "/mc/event",
      "body": {
        "subject": "on vacation",
        "showAs": "off",
        "start": {
          "dateTime": "2019-08-27T14:49:06.5952",
          "timeZone": "UTC"
        }
      },
      "headers": {
        "Content-Type": "application/json"
      }
    },
    {
      "id": "2",
      "dependsOn": [
        "1"
      ],
      "url": "/me/mailFolders",
      "method": "POST",
      "body": {
        "automaticRepliesSetting": {
          "status": "Scheduled",
          "scheduledStartDateTime": {
            "dateTime": "2020-03-20T18:00:00.0000000",
            "timeZone": "UTC"
          },
          "scheduledEndDateTime": {
            "dateTime": "2020-03-20T18:00:00.0000000",
            "timeZone": "UTC"
          }
        }
      },
      "headers": {
        "Content-Type": "application/json"
      }
    }
  ]
}
  
```

NEW QUESTION 83

- (Exam Topic 2)

This question requires that you evaluate the underlined text to determine if it is correct- For a Microsoft Office Add-in, you set the icon in the Microsoft SharePoint app catalog.

Instructions: Review the underlined text. If it makes the statement correct, select "No change is needed." If the statement is incorrect, select the answer choice that makes the statement correct.

- A. No change is needed.
- B. a JSON manifest file
- C. the Office app catalog
- D. an XML manifest file

Answer: D

NEW QUESTION 86

- (Exam Topic 2)

You are building a Microsoft Outlook add-in.

Which object should you use to save a user's preferences between sessions and devices?

- A. localStorage
- B. RoamingSettings
- C. CustomXMLParts
- D. CustomProperties

Answer: D

NEW QUESTION 91

- (Exam Topic 2)

For each of the following statements, select Yes if the statement is true. Otherwise, select NO. NOTE: Each correct selection is worth one point.

Answer Area

Statements	Yes	No
Search-based messaging extensions can query a third-party service and show the information on a card.	<input type="radio"/>	<input type="radio"/>
Search-based messaging extensions can use the Bot Framework to interact with third-party applications.	<input type="radio"/>	<input type="radio"/>
Search-based messaging extensions can be used to display information on a tab.	<input type="radio"/>	<input type="radio"/>

- A. Mastered
- B. Not Mastered

Answer: A

Explanation:

Answer Area

Statements	Yes	No
Search-based messaging extensions can query a third-party service and show the information on a card.	<input type="radio"/>	<input checked="" type="radio"/>
Search-based messaging extensions can use the Bot Framework to interact with third-party applications.	<input type="radio"/>	<input checked="" type="radio"/>
Search-based messaging extensions can be used to display information on a tab.	<input checked="" type="radio"/>	<input type="radio"/>

NEW QUESTION 96

- (Exam Topic 2)

You are developing a Microsoft Teams solution to host an existing webpage as a Teams tab. Which requirement must the page meet?

- A. The page must adhere to HTML 5.0 standards
- B. The page must adhere to WCAG 2.0 accessibility guidelines
- C. The page must be hosted on a domain that is on the validDomains list of the manifest
- D. The page must use CSS3 stylesheets

Answer: C

Explanation:

Make sure that all domains used in your tab pages are listed in the manifest.json validDomains array. Reference: <https://docs.microsoft.com/en-us/microsoftteams/platform/tabs/how-to/create-tab-pages/configuration-page>

NEW QUESTION 97

- (Exam Topic 2)

You are developing a Microsoft Team application. To host a webpage in a Teams tab, the manifest file must include the `contentUrl` property within the `staticTabs` property.

Instructions: Review the underline text. If the makes the statement correct, select " No change is needed. " If the statement is incorrect, select the answer choice that makes the statement correct.

- A. No change is needed.
- B. websiteUrl property within the `configurableTabs` property
- C. ValidDomain property within the `configurableTabs` property
- D. ValidDomain property within the `statictabs` property

Answer: B

NEW QUESTION 98

- (Exam Topic 2)

For each of the following statements, select Yes if the statement is true. Otherwise, select No. NOTE: Each correct select is worth one point.

Answer Area

Statements	Yes	No
A Microsoft Office Web Add-in can be scaffolded by using a Yeoman generator.	<input type="radio"/>	<input type="radio"/>
Microsoft Office Web Add-ins can be developed by using C#.	<input type="radio"/>	<input type="radio"/>
The code for a Microsoft Office Web Add-in has access to the local file system of a device.	<input type="radio"/>	<input type="radio"/>

- A. Mastered
 B. Not Mastered

Answer: A

Explanation:

Answer Area

Statements	Yes	No
A Microsoft Office Web Add-in can be scaffolded by using a Yeoman generator.	<input checked="" type="radio"/>	<input type="radio"/>
Microsoft Office Web Add-ins can be developed by using C#.	<input checked="" type="radio"/>	<input type="radio"/>
The code for a Microsoft Office Web Add-in has access to the local file system of a device.	<input checked="" type="radio"/>	<input type="radio"/>

NEW QUESTION 101

- (Exam Topic 2)

You have a single-page application (SPA) named TodoListSPA and a server-based web app named TodoListService. The permissions for the TodoList SPA API are configured as shown in the TodoList SPA exhibit. (Click the TodoListSPA tab.)

API/PERMISSIONS NAME	TYPE	DESCRIPTION	ADMIN CONSENT REQUIRED
▼ TodoListService-OBO-sample-v2 (1)			
user_impersonation	Delegated	Access TodoListService-OBO-sample-v2	

The permissions for the TodoListService API are configured as shown in the TodoListService exhibit. (Click the TodoListService tab.)

API/PERMISSIONS NAME	TYPE	DESCRIPTION
▼ Microsoft Graph (1)		
UserRead	Delegated	Sign in and read user profile

You need to ensure that TodoListService can access a Microsoft OneDrive file of the signed-in user. The solution must use the principle of least privilege. Which permission should to grant?

- A. the Sites.Read.All delegated permission for TodoListService
 B. the Sites.Read.All delegated permission for TodoListSpa
 C. the Sites.Read.All application permission for TodoListSPA
 D. the Sites.Read.All application permission for TodoListService

Answer: A

Explanation:

A client application gains access to a resource server by declaring permission requests. Two types are available: "Delegated" permissions, which specify scope-based access using delegated authorization from the signed-in resource owner, are presented to the resource at run-time as "scp" claims in the client's access token.

"Application" permissions, which specify role-based access using the client application's credentials/identity, are presented to the resource at run-time as "roles" claims in the client's access token.

Reference: <https://docs.microsoft.com/en-us/azure/active-directory/develop/developer-glossary#permissions>

NEW QUESTION 103

- (Exam Topic 2)

You are developing a web app that will display emails from the Microsoft 365 mailbox of the current signed-in user. For performance reasons, you do not want all the emails to be loaded simultaneously, rather page-by-page as the user navigates the app.

You plan to display 30 emails per page. The most recent emails must be displayed first.

How should you complete the query parameters for the REST request to display the third page of emails? To answer, drag the appropriate query parameters to the correct targets. Each query parameter may be used once, more than once, or not at all. You may need to drag the split bar between panes or scroll to view content.

NOTE: Each correct selection is worth one point.

filter

search

select

skip

top

GET https://graph.microsoft.com/v1.0/me/messages?\$

Parameter

=60&\$

Parameter

=30&\$orderby=sentDateTime desc

- A. Mastered

B. Not Mastered

Answer: A

Explanation:

Box 1: top

Number of items to return in a result Box 2: skip

\$skip Indexes into a result set. Also used by some APIs to implement paging and can be used together with \$top to manually page results.

Reference: https://developer.microsoft.com/en-us/graph/docs/overview/query_parameters

NEW QUESTION 107

.....

Thank You for Trying Our Product

We offer two products:

1st - We have Practice Tests Software with Actual Exam Questions

2nd - Questons and Answers in PDF Format

MS-600 Practice Exam Features:

- * MS-600 Questions and Answers Updated Frequently
- * MS-600 Practice Questions Verified by Expert Senior Certified Staff
- * MS-600 Most Realistic Questions that Guarantee you a Pass on Your FirstTry
- * MS-600 Practice Test Questions in Multiple Choice Formats and Updatesfor 1 Year

100% Actual & Verified — Instant Download, Please Click
[Order The MS-600 Practice Test Here](#)