

Exam Questions 350-901

Developing Applications using Cisco Core Platforms & APIs

<https://www.2passeasy.com/dumps/350-901/>



NEW QUESTION 1

A cloud native project is being worked on in which all source code and dependencies are written in Python, Ruby, and/or JavaScript. A change in code triggers a notification to the CI/CD tool to run the CI/CD pipeline.

Which step should be omitted from the pipeline?

- A. Deploy the code to one or more environments, such as staging and/or production.
- B. Build one of more containers that package up code and all its dependencies.
- C. Compile code.
- D. Run automated tests to validate the correctness.

Answer: A

NEW QUESTION 2

A network operations team is using the cloud to automate some of their managed customer and branch locations. They require that all of their tooling be ephemeral by design and that the entire automation environment can be recreated without manual commands. Automation code and configuration state will be stored in git for change control and versioning. The engineering high-level plan is to use VMs in a cloud-provider environment then configure open source tooling onto these VMs to poll, test, and configure the remote devices, as well as deploy the tooling itself.

Which configuration management and/or automation tooling is needed for this solution?

- A. Ansible
- B. Ansible and Terraform
- C. NSO
- D. Terraform
- E. Ansible and NSO

Answer: B

NEW QUESTION 3

Which database type should be used with highly structured data and provides support for ACID transactions?

- A. time series
- B. document
- C. graph
- D. relational

Answer: D

NEW QUESTION 4

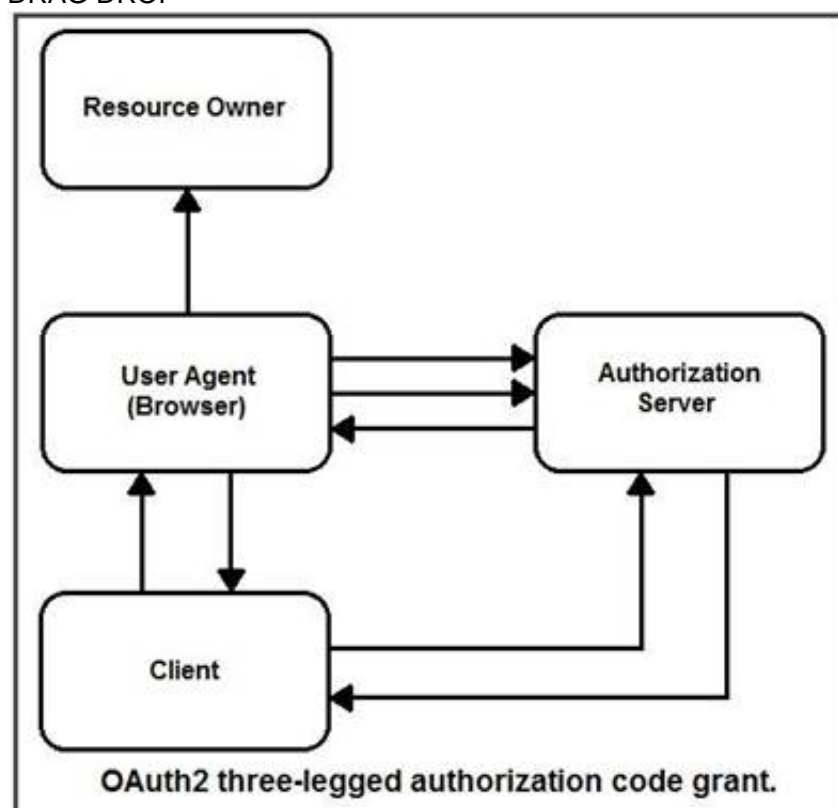
Which statement about microservices architecture is true?

- A. Applications are written in a single unit.
- B. It is a complex application composed of multiple independent parts.
- C. It is often a challenge to scale individual parts.
- D. A single faulty service can bring the whole application down.

Answer: B

NEW QUESTION 5

DRAG DROP



Refer to the exhibit. Drag and drop the steps from the left into the correct order of operation on the right for a successful OAuth2 three-legged authorization code grant flow.

Select and Place:

Answer Area

Client initiates the flow.	step 1
The authorization server authenticates the client, validates details sent, and responds with an access token.	step 2
The authorization server redirects the user-agent back to the client using the redirection URI provided.	step 3
The authorization server authenticates the resource owner.	step 4
The client requests an access token from the authorization server's token endpoint.	step 5

- A. Mastered
- B. Not Mastered

Answer: A

Explanation:

Answer Area

Client initiates the flow.	Client initiates the flow.
The authorization server authenticates the client, validates details sent, and responds with an access token.	The authorization server redirects the user-agent back to the client using the redirection URI provided.
The authorization server redirects the user-agent back to the client using the redirection URI provided.	The authorization server authenticates the resource owner.
The authorization server authenticates the resource owner.	The client requests an access token from the authorization server's token endpoint.
The client requests an access token from the authorization server's token endpoint.	The authorization server authenticates the client, validates details sent, and responds with an access token.

NEW QUESTION 6

Paginating the Results

By adding the `page-size` operator to the query URI you can divide the query results into groups (pages) of objects using the following syntax. The operand specifies the number of objects in each group.

`page-size = number-of-objects-per-page`

By adding the `page` operator in the query URI, you can specify a single group to be returned using the following syntax. The pages start from number 0.

`page = page-number`

This example shows you how to specify 15 fault instances per page in descending order, returning only the first page:

Refer to the exhibit. Many faults have occurred in the ACI environment and a sample of them needs to be examined. Which API call retrieves faults 30 through 45?

- A. GET https://apic-ip-address/api/class/faultInfo.json?order-by=faultinst.severity|desc&page=1&page-size=15
- B. GET https://apic-ip-address/api/class/faultInfo.json?order-by=faultinst.severity|desc&page=2&page-size=15
- C. GET https://apic-ip-address/api/class/faultInfo.json?order-by=faultinst.severity|desc&page=30
- D. GET https://apic-ip-address/api/class/faultInfo.json?order-by=faultinst.severity|desc&page=2&page-size=30

Answer: D

NEW QUESTION 7

Refer to the exhibit. The cURL POST request creates an OAuth access token for authentication with FDM API requests. What is the purpose of the file “@token_data” that cURL is handling?

- A. This file is a container to log possible error responses in the request.
- B. This file is given as input to store the access token received from FDM.
- C. This file is used to send authentication related headers.
- D. This file contains raw data that is needed for token authentication.

Answer: B

NEW QUESTION 8

User report that they can no longer process transactions with the online ordering application, and the logging dashboard is displaying these messages.

Fri Jan 10 19:37:31.123 EST 2020 [FRONTEND] INFO: Incoming request to add item to cart from user 45834534858 Fri Jan 10 19:37:31 247 EST 2020
[BACKEND] INFO: Attempting to add item to cart
Fri Jan 10 19:37:31 250 EST 2020 [BACKEND] ERROR: Failed to add item: MYSQLDB ERROR: Connection refused What is causing the problem seen in these log messages?

- A. The database server container has crashed.
- B. The backend process is overwhelmed with too many transactions.
- C. The backend is not authorized to commit to the database.
- D. The user is not authorized to add the item to their cart.

Answer: A

NEW QUESTION 9

A user is receiving a 429 Too Many Requests error. Which scheme is the server employing that causes this error?

- A. rate limiting
- B. time outs
- C. caching
- D. redirection

Answer: A

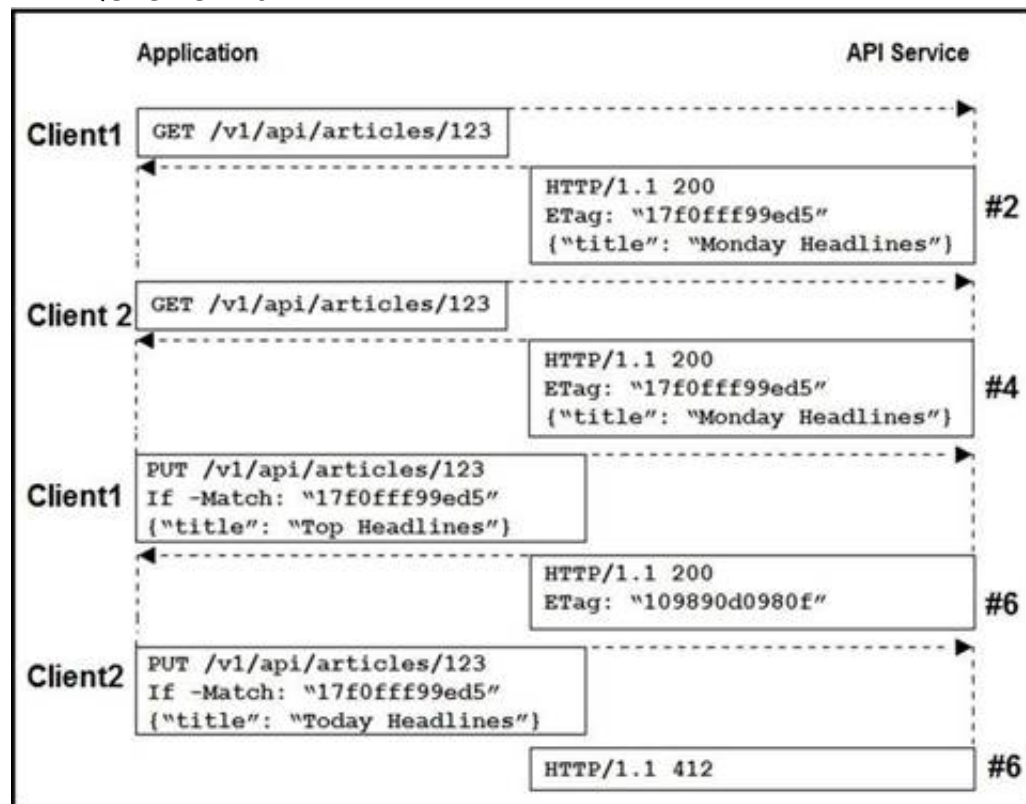
NEW QUESTION 10

Refer to the exhibit. An application uses an API to periodically sync a large data set. Based on the HTTP message sequence provided, which statements are true about the caching behavior seen in the scenario? (Choose two.)

- A. The full dataset was transmitted to the client twice.
- B. The dataset changed sometime between message #4 and #5.
- C. A partial dataset was transmitted to the client in message #4.
- D. The dataset did not change during the scenario.
- E. Messages #3 and #5 are equivalent.

Answer: AD

NEW QUESTION 10



Refer to the exhibit. Two editors are concurrently updating an article's headline from their mobile devices. What results from this scenario based on this REST API sequence?

- A. The article is marked as "Conflicted"
- B. The article headline is "Monday Headlines"
- C. The article headline is "Today Headlines"
- D. The article headline is "Top Headlines"

Answer: B

NEW QUESTION 11

```

response = requests.get(url)
if response.status_code != 200:
    error_message = "Unexpected HTTP Response code: {}".format(response.status_code)
    raise Exception(error_message)
data = response.json()
    
```


Refer to the exhibit. This snippet of a script has recently started exiting abnormally with an exception stating "Unexpected HTTP Response code: 429". Which solution handles rate limiting by the remote API?

- A.
- ```
response = requests.get(url)
if response.status_code == 429:
 backoff_seconds = int(response.headers['Retry-After'])
 sleep(backoff_seconds)
elif response.status_code != 200:
 error_message = "Unexpected HTTP Response code: {}".format(response.status_code)
 raise Exception(error_message)
data = response.json()
```
- B.
- ```
response = requests.get(url)
if response.status_code != 200 and response.status_code != 429:
    error_message = "Unexpected HTTP Response code: {}".format(response.status_code)
    raise Exception(error_message)
data = response.json()
```
- C.
- ```
response = requests.get(url)
if response.status_code != 200 and response.status_code != 429:
 backoff_seconds = int(response.headers['Retry-After'])
 sleep(backoff_seconds)
 error_message = "Unexpected HTTP Response code: {}".format(response.status_code)
 raise Exception(error_message)
data = response.json()
```
- D.
- ```
response = requests.get(url)
if response.status_code == 429:
    backoff_seconds = int(response.headers['Retry-After'])
    sleep(backoff_seconds)
    response = requests.get(url)
elif response.status_code != 200:
    error_message = "Unexpected HTTP Response code: {}".format(response.status_code)
    raise Exception(error_message)
data = response.json()
```

Answer: D

NEW QUESTION 12

A container running a Python script is failing when it reaches the integration testing phase of the CI/CD process. The code has been reviewed thoroughly and the build process works on this container and all other containers pass unit and integration testing. What should be verified to resolve the issue?

- A. that the correct port is exposed in the Dockerfile
- B. that the necessary modules and packages are installed on build
- C. that the script is running from the right directory
- D. that the Python version of the container image is correct

Answer: B

NEW QUESTION 13

Which two types of storage are supported for app hosting on a Cisco Catalyst 9000 Series Switch? (Choose two.)

- A. external USB storage
- B. internal SSD
- C. CD-ROM
- D. SD-card
- E. bootflash

Answer: AB

NEW QUESTION 16

On a Cisco Catalyst 9300 Series Switch, the guest shell is being used to create a service within a container. Which change is needed to allow the service to have external access?

- A. Apply ip nat overload on VirtualPortGroup0.
- B. Apply ip nat inside on Interface VirtualPortGroup0.
- C. Apply ip nat outside on Interface VirtualPortGroup0.

D. Apply ip nat inside on Interface GigabitEthernet1.

Answer: B

NEW QUESTION 17

```
headers = ( _____ )
try:
    response = requests.get("https://sandboxdnac.cisco.com/dna/intent/api/v1/wireless/profile",
        headers=headers, verify=False)
except requests.exceptions.RequestException as error:
    print("Error processing request", error)
    sys.exit(1)
```

Refer to the exhibit. Which code snippet is required in the headers to successfully authorize wireless information from Cisco DNA Center?

- A. headers = {'X-auth-token':'fa8426a0-8eaf-4d22-8e13-7c1b16a9370c'} B.headers = {'Authorization':'Basic YWRtaW46R3JhcGV2aW5IMQ=='}
B. headers = {'Authorization':'Bearer ASDNFALKJER23412RKDALSNKF'}
C. headers = {'Content-type':'application/json'}

Answer: A

NEW QUESTION 21

There is a requirement to securely store unique usernames and passwords. Given a valid username, it is also required to validate that the password provided is correct. Which action accomplishes this task?

- A. Encrypt the username, hash the password, and store these values.
B. Hash the username, hash the password, and store these values.
C. Encrypt the username, encrypt the password, and store these values.
D. Hash the username, encrypt the password, and store these values.

Answer: A

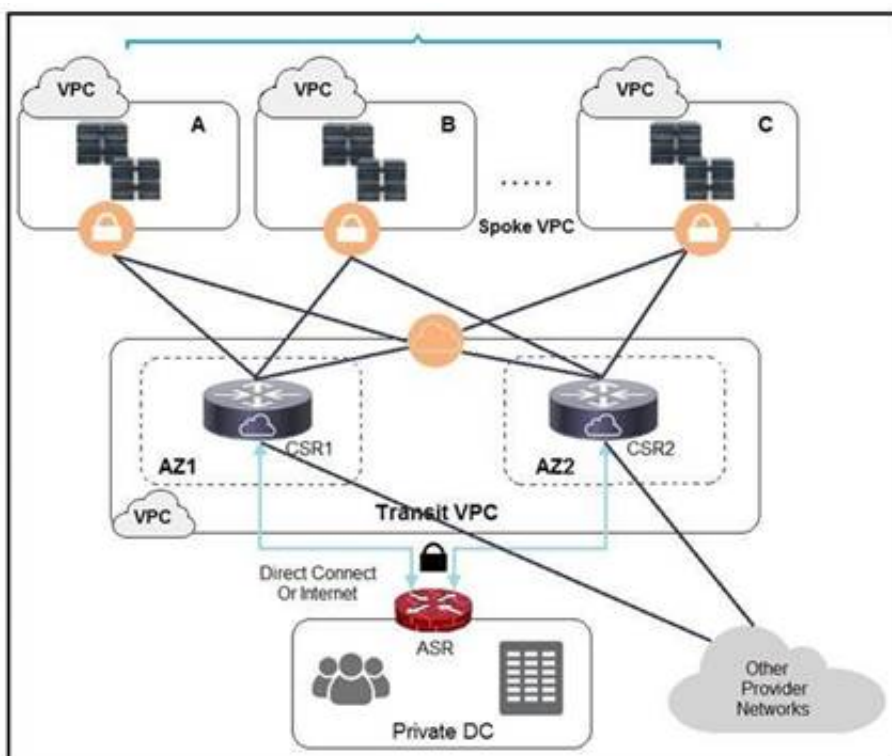
NEW QUESTION 22

An application has initiated an OAuth authorization code grant flow to get access to an API resource on behalf of an end user. Which two parameters are specified in the HTTP request coming back to the application as the end user grants access? (Choose two.)

- A. access token and a refresh token with respective expiration times to access the API resource
B. access token and expiration time to access the API resource
C. redirect URI a panel that shows the list of permissions to grant
D. code that can be exchanged for an access token
E. state can be used for correlation and security checks

Answer: AB

NEW QUESTION 25



Refer to the exhibit. A company has extended networking from the data center to the cloud through Transit VPC. Which two statements describe the benefits of this approach? (Choose two.)

- A. Dynamic routing combined with multi-AZ- deployment creates a robust network infrastructure.
B. VPC virtual gateways provide highly available connections to virtual networks.
C. Dedicated VPC simplifies load balancing by combining internal and external web services.
D. VPC virtual gateways provide more secure connections to virtual networks.
E. Dedicated VPC simplifies routing by not combining this service with other shared services.

Answer: BD

NEW QUESTION 28

A developer has just completed the configuration of an API that connects sensitive internal systems. Based on company policies, the security of the data is a high priority. Which approach must be taken to secure API keys and passwords?

- A. Embed them directly in the code.
- B. Store them in a hidden file.
- C. Store them inside the source tree of the application.
- D. Change them periodically.

Answer: D

NEW QUESTION 31

Which two actions must be taken when an observable microservice application is developed? (Choose two.)

- A. Know the state of a single instance of a single service.
- B. Place "try/except" statement in code.
- C. Place log statements in the code.
- D. Use distributed tracing techniques.
- E. Deploy microservice to multiple datacenters.

Answer: BC

NEW QUESTION 32

Which database type should be used to store data received from model- driven telemetry?

- A. BigQuery database
- B. Time series database
- C. NoSQL database
- D. PostgreSQL database

Answer: B

NEW QUESTION 36

An automated solution is needed to configure VMs in numerous cloud provider environments to connect the environments to an SDWAN. The SDWAN edge VM is provided as an image in each of the relevant clouds and can be given an identity and all required configuration via cloud-init without needing to log into the VM once online.

Which configuration management and/or automation tooling is needed for this solution?

- A. Ansible
- B. Ansible and Terraform
- C. NSO
- D. Terraform
- E. Ansible and NSO

Answer: E

NEW QUESTION 39

```
- name: Configure Interfaces
  with_items: "{{interfaces}}"
  netconf_config:
    <<: *host_info
    xml: |
      <config>
        <interfaces xmlns="urn:ietf:params:xml:ns:yang:ietf-interfaces">
          <interface>
            <name>{{item.interface_type}}{{item.interface_id}}</name>
            <description>{{item.description}}</description>
            <type xmlns:ianaift="urn:ietf:params:xml:ns:yang:iana-if-type">ianaift:ethernetCsmacd</type>
            <enabled>true</enabled>
            <ipv4 xmlns="urn:ietf:params:xml:ns:yang:ietf-ip">
              <address>
                <ip>{{item.ip_address}}</ip>
                <netmask>{{item.subnet_mask}}</netmask>
              </address>
            </ipv4>
          </interface>
        </interfaces>
      </config>
```

Refer to the exhibit. The Ansible playbook is using the netconf_module to configure an interface using a YANG model. As part of this workflow, which YANG models augment the interface?

- A. ietf-interfaces and ietf-ip
- B. iana-if-type and ietf-interfaces
- C. ietf-ip and openconfig-interface
- D. ietf-ip and iana-if-type

Answer: B

NEW QUESTION 42

A developer needs to configure an environment to orchestrate and configure. Which two tools should be used for each task? (Choose two.)

- A. Puppet for orchestration
- B. Terraform for orchestration
- C. Terraform for configuration
- D. Ansible for orchestration
- E. Ansible for configuration

Answer: BE

NEW QUESTION 46

.....

THANKS FOR TRYING THE DEMO OF OUR PRODUCT

Visit Our Site to Purchase the Full Set of Actual 350-901 Exam Questions With Answers.

We Also Provide Practice Exam Software That Simulates Real Exam Environment And Has Many Self-Assessment Features. Order the 350-901 Product From:

<https://www.2passeasy.com/dumps/350-901/>

Money Back Guarantee

350-901 Practice Exam Features:

- * 350-901 Questions and Answers Updated Frequently
- * 350-901 Practice Questions Verified by Expert Senior Certified Staff
- * 350-901 Most Realistic Questions that Guarantee you a Pass on Your FirstTry
- * 350-901 Practice Test Questions in Multiple Choice Formats and Updatesfor 1 Year