

## Exam Questions 300-615

Troubleshooting Cisco Data Center Infrastructure (DCIT)

<https://www.2passeasy.com/dumps/300-615/>



#### NEW QUESTION 1

```
Debug messages from Router-A
OSPF: Rcv DBD from 10.100.1.2 on GigabitEthernet0/1 seq 0x2124 opt 0x52 flag 0x2
      len 1452 mtu 2000 state EXSTART
OSPF: Nbr 10.100.1.2 has larger interface MTU
SPF: Send DBD to 10.100.1.2 on GigabitEthernet0/1 seq 0x9E6 opt 0x52 flag 0x7
      len 32
OSPF: Retransmitting DBD to 10.100.1.2 on GigabitEthernet0/1 [10]
OSPF: Send DBD to 10.100.1.2 on GigabitEthernet0/1 seq 0x9E6 opt 0x52 flag 0x7
      len 32
OSPF Retransmitting DBD to 10.100.1.2 on GigabitEthernet0/1[11]
%OSPF-5-ADJCHG: Process 1, Nbr 10.100.1.2 on GigabitEthernet0/1 from EXSTART to
      DOWN, Neighbor Down: Too many retransmissions

Debug messages from Router-B
OSPF: Rev DBD from 10.100.100.1 on GigabitEthernet0/1 seq 0x89E opt 0x52 flag 0x7
      len 32 mtu 1600 state EXCHANGE
OSPF: Nbr 10.100.100.1 has smaller interface MTU
```

Refer to the exhibit. An OSPF adjacency between Router-A and Router-B cannot reach the FULL state. Which action resolves the issue?

- A. Adjust the MTU on Router-A to 1600.
- B. Disable the check of the MTU value.
- C. Set the OSPF media type to point-to-point.
- D. Adjust the MTU on Router-B to 1604.

**Answer: B**

#### NEW QUESTION 2

The Cisco Nexus switch is connected to a peer switch that is not running Cisco NX-OS. The switches are connected using port channel and are experiencing packet loss. Which action should be performed on the Cisco Nexus switch ports to resolve this issue?

- A. Turn on lACP suspend-individual.
- B. Turn on lACP graceful-convergence.
- C. Turn off lACP graceful-convergence.
- D. Turn off lACP suspend-individual.

**Answer: C**

#### NEW QUESTION 3

Refer to the exhibit. The HSRP configuration in the exhibit fails to function. Which action resolves this issue?

- A. Enable IP redirects.
- B. Set the MTU to 1500 bytes.
- C. Configure HSRP version 2.
- D. Configure the same HSRP group on both devices.

**Answer: A**

#### NEW QUESTION 4

Refer to the exhibit. A network engineer has connected the Nexus switch management port to the Internet using DHCP to allow the Guest shell running on the switch to download Python packages. The engineer can ping google.com successfully from the Nexus switch, but the Guest shell failed to download any Python packages. Which action resolves the problem?

- A. Update the Python packages on the Cisco Nexus switch directly.
- B. Manually configure DNS in the Guest shell, even if it is claimed on the Cisco Nexus switch through DHCP.
- C. Manually configure NTP in the Guest shell.
- D. Connect Guest shell to data plane interfaces to be able to connect to the networks outside the Cisco Nexus switch.

**Answer: B**

#### NEW QUESTION 5

```
switch1# show vpc brief
Legend:
(*) - local vPC is down, forwarding via vPC peer-link

vPC domain id : 500
Peer status : peer link is down
vPC keep-alive status : Suspended (Destination IP not reachable)
Configuration consistency status : success
vPC role : secondary, operational primary
Number of vPCs configured : 4
Peer Gateway : Disabled
Dual-active exluded VLANs : -

vPC Peer-link status
-----
id  Port  Status  Active  vlans
---  ---  ---
1  Po500  down  -

switch2# show vpc brief
Legend:
(*) - local vPC is down, forwarding via vPC peer-link

vPC domain id : 20
Peer status : peer link is down
vPC keep-alive status : Suspended (Destination IP not reachable)
Configuration consistency status : success
vPC role : secondary, operational primary
Number of vPCs configured : 4
Peer Gateway : Disabled
Dual-active exluded VLANs : -

vPC Peer-link status
-----
id  Port  Status  Active  vlans
---  ---  ---
1  Po500  down  -
```

Refer to the exhibit. vPC between switch1 and switch2 is not working. Which two actions are needed to fix the problem? (Choose two.)

- A. Match vPC domain ID between the two devices.
- B. Configure IP address on the interface.
- C. Activate VLANs on the vPC.
- D. Configure vPC peer link and vPC peer keepalive correctly.
- E. Configure one of the switches as primary for the vPC.

**Answer:** AC

#### NEW QUESTION 6

An engineer removes a VMM domain from an endpoint group called EPG-1, but the distributed port group fails to be deleted. Which action must be taken to resolve the issue?

- A. Remove the port group manually.
- B. Migrate all virtual machines in the EPG-1 to different hypervisors.
- C. Remove the remaining EPGs from the VMM domain.
- D. Migrate all virtual machines in the EPG-1 to different port groups.

**Answer:** C

#### NEW QUESTION 7

DRAG DROP

An engineer is troubleshooting issues in Cisco UCS Director. Drag and drop the possible causes from the left onto the correct issues on the right. Select and Place:

- A. Mastered
- B. Not Mastered

**Answer:** A



#### NEW QUESTION 8

An engineer attempts to register Cisco UCS Manager to Cisco UCS Central, but the registration fails. The engineer can ping Cisco UCS Central from UCS Manager. Which two actions must the engineer attempt to resolve the problem? (Choose two.)

- A. Synchronize the date and time to NTP for Cisco UCS Central and the Cisco UCS domains.
- B. Apply the UCS Central license to UCS Central.
- C. Place Cisco UCS Manager on the same subnet as Cisco UCS Central.
- D. Allow port 443 between Cisco UCS Manager and Cisco UCS Central.
- E. Allow port 9443 between Cisco UCS Manager and Cisco UCS Central.

**Answer:** AD

#### NEW QUESTION 9

You have an ACI environment with three APICs, two spine switches, and four-leaf switches. You wipe and reboot all APICs first then leaf and spine switches one-by-one and successfully go through the Initial Setuo dialogue on the APIC 1 CIMC KVM console. When you log in to the APIC1 WebGUI, you notice that you do not see any directly connected leaf switches being discovered under Fabric > Inventory > Fabric Membership. What is the cause of the issue?

- A. The leaf nodes were not erased properly, which caused a fabric parameters mismatch with the APIC1.
- B. Rebooting the APICs and the leaf and spine switches after wiping them is not required.
- C. You forgot to enter the TEP Pool value during the Initial Setup dialogue on APIC1.
- D. The same Fabric Name value should be used before after wiping all devices.

**Answer:** C

#### NEW QUESTION 10

DRAG DROP

Drag and drop the Cisco UCS SNMP fault types from the left onto the correct issues on the right.

Select and Place:

connectivity	A server discovery fails.
environment	An adapter is unreachable.
operational	A voltage issue is detected.
server	A service profile is unable to associate.

- A. Mastered
- B. Not Mastered

**Answer:** A

**Explanation:**

connectivity	operational
environment	connectivity
operational	environment
server	server

#### NEW QUESTION 10

An engineer must replace a failed memory on a Cisco UCS B-Series Blade Server. After the replacement was done, the server has a “resolve slot” warning. Which server maintenance action resolves the issue?

- A. Perform diagnostic interrupt on the server.
- B. Re-acknowledgement the server.
- C. Reset the server.
- D. Decomission the server.

Answer: B

#### NEW QUESTION 15

Cisco Unified Computing System Manager raises a critical error message that indicates that the system has overlapping Ethernet and FCoE VLANs. All of the Ethernet traffic on the overlapping VLANs drops. Which action resolves the issue?

- A. Modify the VLAN assignment to vNICs.
- B. Change the PIN groups on the vHBAs.
- C. Modify the FCoE VLAN.
- D. Set the FCoE VLAN as the native VLAN on server uplinks.

Answer: A

#### NEW QUESTION 18

DRAG DROP

Drag and drop the actions from the left onto the faults that they resolve on the right. Not all options are used.

Select and Place:

Add a block of WWNs.	fltComputePoolEmpty
Add a block of suffixes.	fltFcpoolInitiatorsEmpty
Reacknowledge the server.	fltpoolPoolEmpty
Add a block of Layer 2 addresses.	fltMacpoolPoolEmpty
Add a block of Layer 3 addresses.	fltUuidpoolPoolEmpty
Add a block of ext-mgmt addresses.	

- A. Mastered
- B. Not Mastered

Answer: A

Explanation:

Add a block of WWNs.	Reacknowledge the server.
Add a block of suffixes.	Add a block of WWNs.
Reacknowledge the server.	Add a block of Layer 3 addresses.
Add a block of Layer 2 addresses.	Add a block of Layer 2 addresses.
Add a block of Layer 3 addresses.	Add a block of suffixes.
Add a block of ext-mgmt addresses.	

#### NEW QUESTION 20



```
leaf1# show interface ethernet 1/11
Ethernet1/11 is up (out-of-service)
admin state is up, Dedicated Interface
  Hardware: 1000/10000 Ethernet, address: e4aa/5d94.a2b5 (bia e4aa.5d94.a2b5)
  MTU 9000 bytes, BW 10000000 Kbit, DLY 1 usec
  reliability 255/255, txload 1/255, rxload 1/255
  Encapsulation ARPA, medium is broadcast
  Port mode is trunk
  full-duplex, 10 Gb/s, media type is 10G
  FEC (forward-error-correction) : disable-fec
  Beacon is turned off
  Auto-Negotiation is turned on
  Input flow-control is off, output flow-control is off
  Auto-mdix is turned off
  Rate mode is dedicated
  Switchport monitor is off
  EtherType is 0x8100
  EEE (efficient-ethernet) : n/a
  Last link flapped 4d06h
  Last clearing of "show interface" counters never
  1 interface resets
  30 seconds input rate 0 bits/sec, 0 packets/sec
  30 seconds output rate 0 bits/sec, 0 packets/sec
```

Refer to the exhibit. An engineer is performing a health check on ACI. Which statement about interface Ethernet 1/11 is true?

- A. The interface is working correctly and fully operational, but it is not in use.
- B. The interface policy is misconfigured.
- C. "out-of-service" is the default interface status in ACI.
- D. "out-of-service" indicates that no service graph is in use for this interface.

**Answer:** B

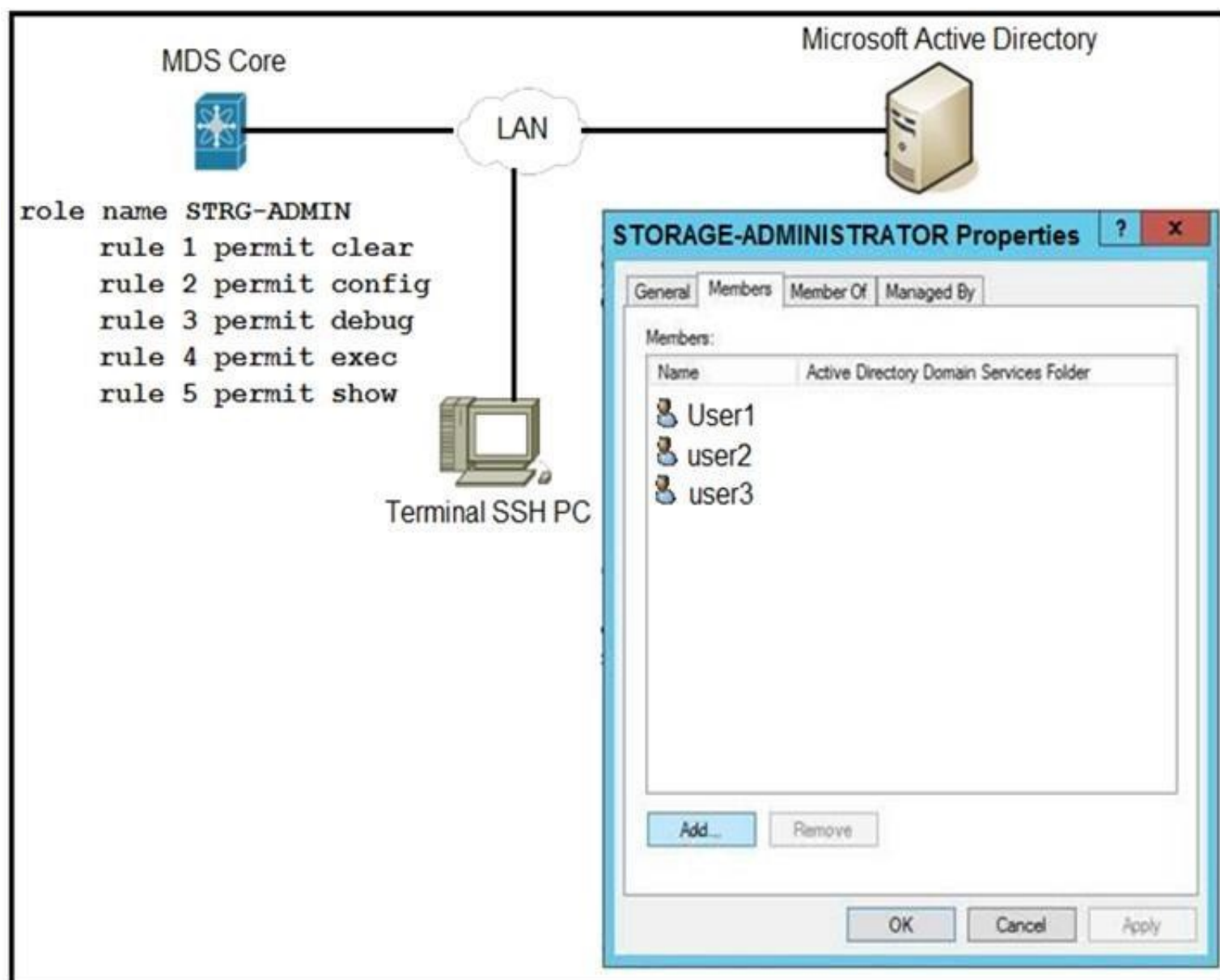
#### NEW QUESTION 25

A user reports that they cannot reach from a UCS server to an FC Storage array. Which command is used to test communication between an FCF and a target?

- A. fcroute
- B. traceroute
- C. fcping
- D. ping

**Answer:** C

#### NEW QUESTION 27



Refer to the exhibit. An engineer is troubleshooting why user1, user2, and user3 from group STORAGE-ADMINISTRATOR in Microsoft Active Directory cannot log in to the Cisco MDS SSH CLI. Which action resolves the issue?

- A. Configure the role name to match the group name on Microsoft Active Directory.
- B. Include specific users into MDS role configuration.
- C. Configure SSH logins on Cisco MDS switch.
- D. Integrate Cisco MDS with Microsoft Active Directory.

**Answer:** A

#### NEW QUESTION 31

Refer to the exhibit. A new Cisco Nexus 5548 Switch connects to a network. SAN switching is configured on the switch. The switch fc2/10 NP uplink is shown in the exhibit. Which action ensures that fc2/10 is in an up state?

- A. Replace the SFP port module in fc2/10.
- B. Configure the admin port type E on the upstream switch that connects the port.
- C. Enable NPIV on the upstream switch that connects the port.
- D. Configure the BB\_credit buffers on the upstream switch that connects the port.

**Answer:** C

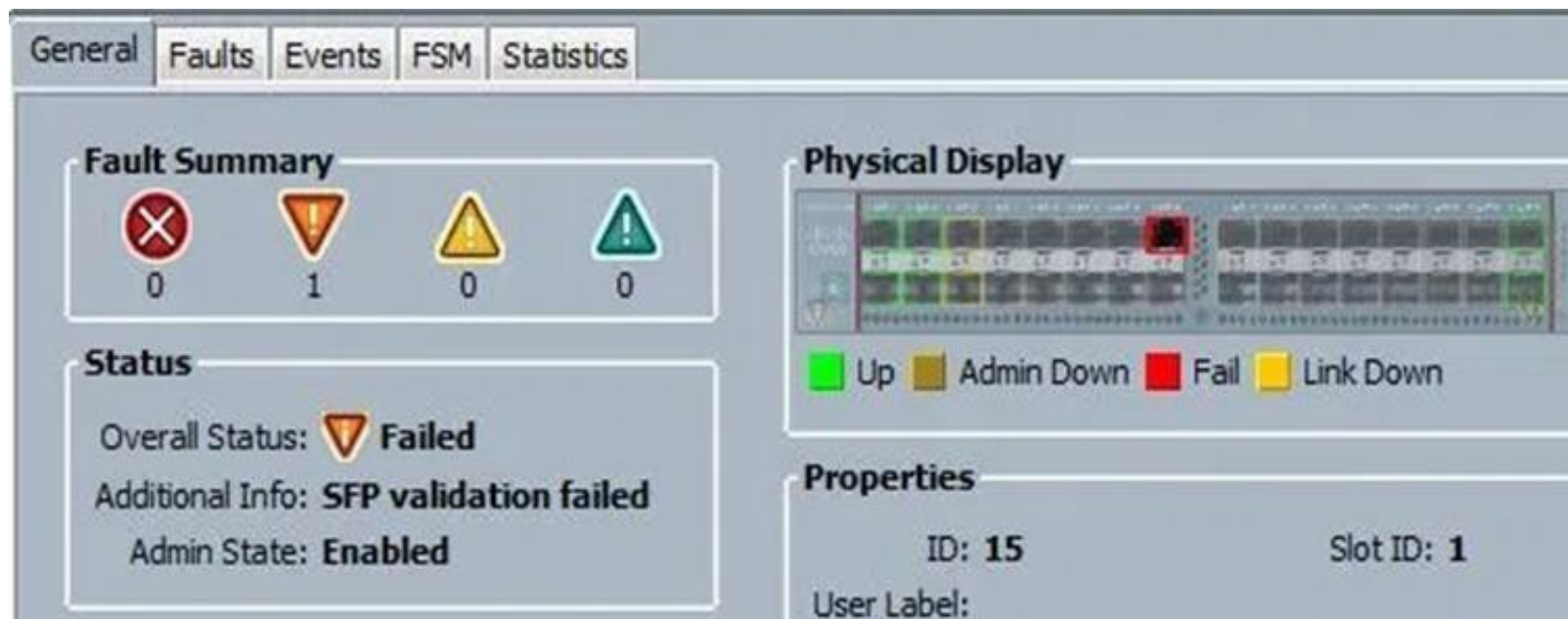
#### NEW QUESTION 35

A server fails to boot from the operating system after a RAID1 cluster migration. The RAID remains in an inactive state during and after a service profile association. Which action resolves the issue?

- A. Configure the SAN boot target in the service profile.
- B. Configure the SAN boot target to any configuration mode.
- C. Use a predefined local disk configuration policy.
- D. Remove the local disk configuration policy.

**Answer:** C

#### NEW QUESTION 37



Refer to the exhibit. When an engineer inserts 8-Gb FC SFP port 15 on a Cisco UCS Fabric Interconnect, the port fails. What is a possible cause of the issue?

- A. Port 15 is configured as an Ethernet port.
- B. Port 15 is configured for 4-Gb FC.
- C. Port 15 is missing a license.
- D. The polarity of the fiber cable is reversed.

**Answer: B**

#### NEW QUESTION 39

An engineer discovers that an NPV/NPIV uplink experiences a heavy load and plans to add more uplinks. Which statement about what occurs when the new uplinks are added is true?

- A. Only new connections use the new uplinks automatically.
- B. Paths must be defined before new connections can use the new uplinks.
- C. All connections must be reset before the new uplinks can be used.
- D. New and existing connections use the new uplinks automatically.

**Answer: D**

#### NEW QUESTION 43

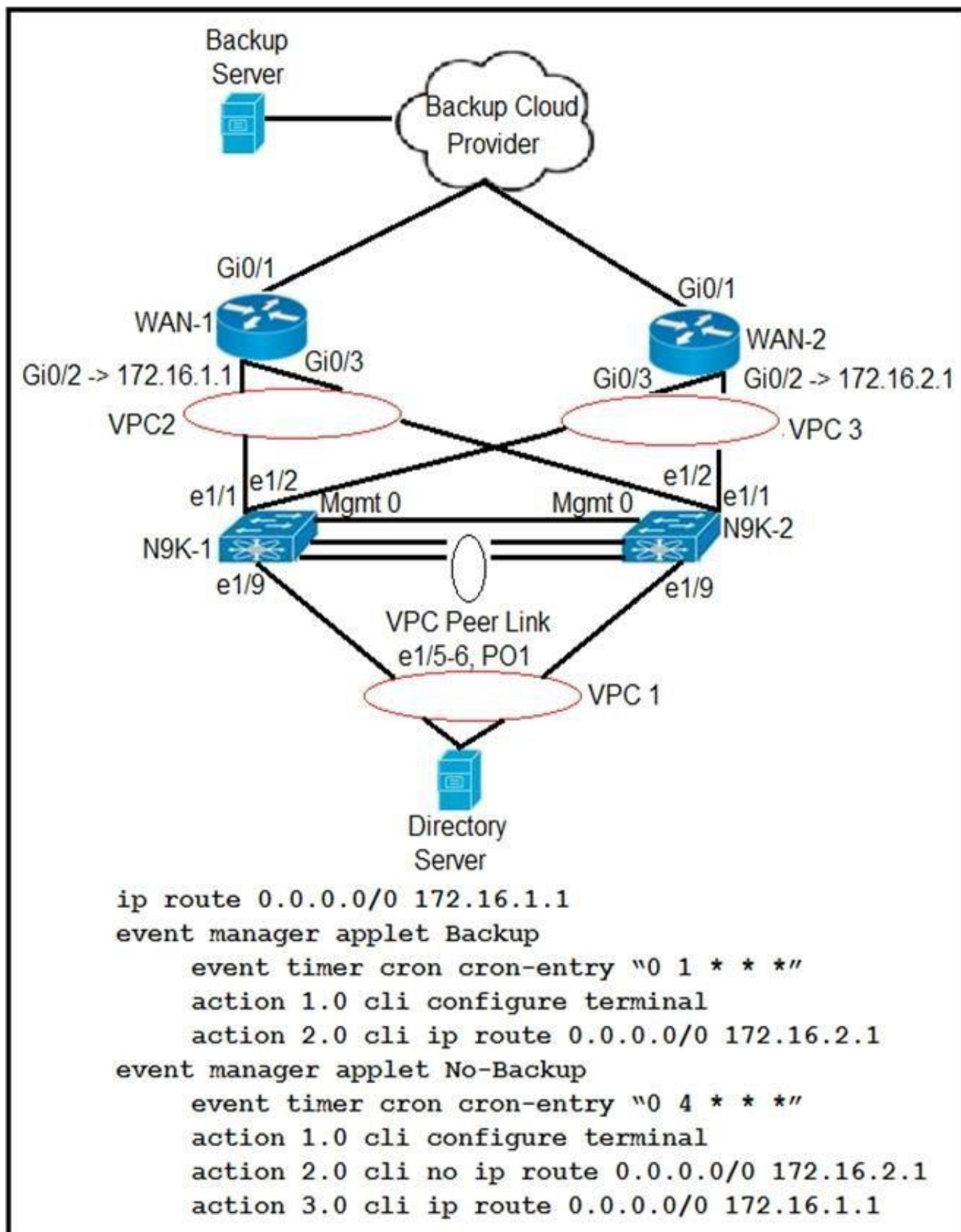
One of Cisco Nexus Series interfaces has become errdisabled with the error message "DCX-No ACK in 100 PDUs". What is the cause of this error?

- A. The host has not responded to the Control Sub-TLV DCBX exchanges of the switch.
- B. The acknowledgement number in the server response has not incremented for 100 exchanges.
- C. Cisco Discovery Protocol is disabled on the switch.
- D. LLDP is disabled on the switch.

**Answer: B**

#### NEW QUESTION 46





Refer to the exhibit. Partial configuration from N9K-1 and N9K-2 is included. The client has two WANs connected. WAN-1 is for normal business-day activities. WAN-2 is for server backups during nonworking hours of 1:00 a.m. to 5:00 a.m. daily. The client says that at the scheduled time for backup, the data center server failed to use the WAN-2 link to back up the servers to the cloud backup system. What is the solution to this problem?

- A. The event timer must be written in epoch time format.
- B. The Cisco Nexus switch must be configured with one applet because a configuration with two applets will fail.
- C. The Cron entry must be configured without double quotes.
- D. The applet called "Backup" must include an action to remove the current static route.

Answer: D

#### NEW QUESTION 49

```

switch# guestshell resize cpu 4
Note: System CPU share will be resized on Guest shell enable
  
```

Refer to the exhibit. After the configuration is performed, guestshell continues to use 2%CPU. Which action resolves the issue?

- A. Resync the database
- B. Recreate the guestshell
- C. Reboot the guestshell
- D. Reboot the switch

Answer: C

#### NEW QUESTION 53

A server administrator attempts to change the Cisco IMC KVM certificate to one signed by a private CA, but the certificate is not being accepted. What can cause this process to fail?

- A. using a certificate with a password-protected private key
- B. RSA encryption being used in the generation of the certificate.
- C. AES encryption being used in the generation of the certificate.
- D. public IP address of the Cisco IMC not being included in the SAN.

**Answer:** A

#### NEW QUESTION 57

DRAG DROP

A firmware upgrade on a fabric interconnect fails. A bootflash contains a valid image. Drag and drop the recovery steps from the left onto the correct order on the right.

Select and Place:

- A. Mastered
- B. Not Mastered

**Answer:** A

#### NEW QUESTION 60

An IOM fails during a firmware upgrade and is unresponsive. Which action recovers the module?

- A. Restore UCSM configuration from backup.
- B. Roll back to the previous firmware.
- C. Use AutoInstall to reinstall the firmware.
- D. From the peer IOM, reset the faulty module.

**Answer:** B

#### NEW QUESTION 65

```
N5k-A-199# sh install all impact system
N5000-uk9.7.1.4.N1.1.bin kickstart
N5000-uk9-kickstart.7.3.4.N1.1.bin
Verifying image bootflash:/n5000-uk9-
kickstart.7.3.4.N1.1.bin for boot
variable "kickstart".
[#####] 100% -- SUCCESS
Verifying image bootflash:/n5000-
uk9.7.1.4.N1.1.bin for boot variable
"system".
[# ] 0% -- FAIL. Return code 0x4045001F
(image MD5 checksum error).
Install has failed. Image verification
failed (0x40930011)
```

Refer to an exhibit. An engineer is troubleshooting an upgrade failure on a switch. Which action resolves the issue?

- A. Save the system image in NVRAM.
- B. Use the same system image as the kickstart image.
- C. Load a new system image.
- D. Reload the same system image.

**Answer:** C

#### NEW QUESTION 68

After upgrading a client's fabric interconnect to the latest version, an engineer discovers that the appliance has lost its entire configuration. Which two locations should an engineer check to confirm that the appliance had backed up the configuration prior to the upgrade in order to retrieve the lost configuration? (Choose two.)

- A. Equipment FSM page, InternalBackup stage
- B. Service profiles page, InternalBackup stage
- C. Admin page, PollInternalBackup stage
- D. Equipment FSM page, PollInternalBackup stage
- E. Admin page, InternalBackup stage.

**Answer:** AC

#### NEW QUESTION 71

.....

## THANKS FOR TRYING THE DEMO OF OUR PRODUCT

Visit Our Site to Purchase the Full Set of Actual 300-615 Exam Questions With Answers.

We Also Provide Practice Exam Software That Simulates Real Exam Environment And Has Many Self-Assessment Features. Order the 300-615 Product From:

<https://www.2passeasy.com/dumps/300-615/>

## Money Back Guarantee

### 300-615 Practice Exam Features:

- \* 300-615 Questions and Answers Updated Frequently
- \* 300-615 Practice Questions Verified by Expert Senior Certified Staff
- \* 300-615 Most Realistic Questions that Guarantee you a Pass on Your FirstTry
- \* 300-615 Practice Test Questions in Multiple Choice Formats and Updatesfor 1 Year