

1Z0-632 Dumps

PeopleSoft PeopleTools 8.5x Implementation Essentials

<https://www.certleader.com/1Z0-632-dumps.html>



NEW QUESTION 1

What are the required steps for using a PeopleCode application class? Arrange them in the correct order.

1. Declare an object of the application class.
2. Import the application class.
3. Invoke methods or use properties.
4. Instantiate the object.
5. Initialize the object.

- A. 1, 2, 5, 3
- B. 1, 2, 4, 5, 3
- C. 2, 1, 4, 3
- D. 1, 2, 4, 3
- E. 2, 1, 4, 5, 3

Answer: E

NEW QUESTION 2

At line number 7 in this record definition, the PSU_ADDRESS_XXX field name represents a .

T1_CUST_TBL (Record)						
Record Fields		Record Type				
Num	Field Name	Type	Len	Format	Short Name	Long Name
1	CUSTOMER_ID	Char	6	Upper	Customer	Customer
2	DESCR	Char	30	Mixed	Descr	Description
3	DESCRSHORT	Char	10	Mixed	Short Desc	Short Description
4	CUSTOMER_TYPE	Char	1	Upper	Type	Customer Type
5	INDUSTRY_ID	Char	30	Upper	Industry ID	Industry ID
6	PHONE	Char	24	Custm	Phone	Telephone
7	PSU_ADDRESS_XXX	XXX				
	STREET1	Char	30	Mixed	Street	Street (line1)
	CITY	Char	30	Mixed	City	City
	STATE	Char	6	Upper	St	State
	ZIP	Char	10	Nums	Zip	Zip Code
	COUNTRY	Char	3	Upper	Cntry	Country
8	CONTRACT_DT	Date	10		Contract Dt	Contract Date
9	TRAINING_UNITS	Nbr	4 1		Units	Training Units

- A. Subpage
- B. Compound field
- C. Subrecord
- D. Derived/Work record
- E. Composite field

Answer: C

NEW QUESTION 3

Match each valid PeopleCode variable scope in the first column with its corresponding duration in the second column and its description in the third column.

Scope	Duration	Description
1. Local	A. The current PeopleSoft session.	a. Transfer values between PeopleCode programs in the current component.
2. Derived	B. Concurrent PeopleSoft sessions.	b. Pass parameters between functions.
3. Global	C. The current PeopleCode program.	c. Transfer values between components.
4. Component	D. The current PeopleSoft component.	d. Eliminate concern about conflict with same-named variables.
5. Private	E. The current method.	e. Prevent other programs from modifying variables.

- A. 1Cd, 3Cc, 5Ee
- B. 1Ed, 3Bc, 4Da
- C. 1Cd, 3Ac, 4Da
- D. 1Cb, 2Ca, 3Aa
- E. 1Cd, 3Bc, 5Ee
- F. 1Cd, 3Ac, 4Da

Answer: D

NEW QUESTION 4

This exhibit displays your test for the new Student Suggestions page, which has a design error.

Student Suggestions

*Student ID Larsen, Mark D

Suggestion Details Find | View all First 1 of 1 Last

Number ☐ Implemented

*Suggestion Category ▼

Course Code

Instructor

*Suggestion Award ▼

Size
☐ Small ☐ Medium ☐ Large ☐ Extra Large

*Description

Save Return to Search Previous in List Next in List Notify

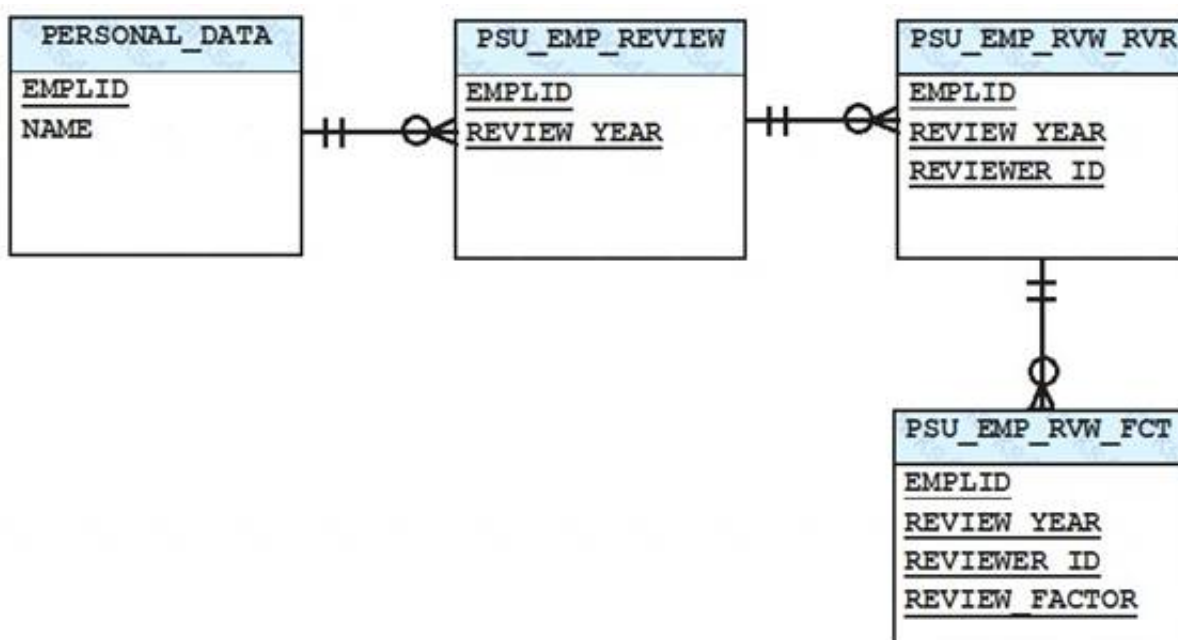
How should you fix this page?

- A. In the page definition, make Student ID a display control field
- B. In the record definition, make Student ID an alternate search key
- C. In the page definition, make Student ID display-only
- D. In the component definition, select the correct search record
- E. In the record definition, make Student ID the high-level key

Answer: C

NEW QUESTION 5

If you were to create a page displaying information from each of the tables listed in the exhibit, at what occurs level would the fields of the PSU_EMP_RVW_FCT table be on?



- A. 3
- B. 2
- C. 1
- D. 4

Answer: D

NEW QUESTION 6

View the following sample search page:

Human Capital Management

Enter any information you have and click Search. Leave fields blank for a list of all values.

Find an Existing Value **Add a New Value**

▼ **Search Criteria**

Course Code: begins with

Description:

☐ Include History ☐ Select History ☐ Case Sensitive

Search **Advanced Search** **Save Search Criteria**

Search Operators:

- begins with
- contains
- =
- not =
- <
- <=
- >
- >=
- between
- in

On the Human Capital Management search page, why is the Course Code field limited to accept only “begins with” searches, whereas the Description field accepts a wide range of search operators?

- A. Description is an alternate search key
- B. The Required check box is selected for the Course Code field on the Edits tab of the Record Field Properties dialog box
- C. Course is a character (Char) field, while Description is a long character (Long) field
- D. Disable Advanced Search Options is selected for the Course field on the Use tab of the Record Field Properties dialog box
- E. Course is a primary key, and primary keys can only run “begins with” searches

Answer: D

NEW QUESTION 7

You have these items selected in the Suppress on Form Factor group box on the Fluid tab for a page control.

Suppress On Form Factor

☒ Small ☒ Medium ☐ Large ☐ Extra Large

How will the system treat this control?

- A. PeopleTools will compress the size of this control to reduce the amount of data sent over the wireless network for smartphones and tablets
- B. The control will display only a laptop and desktop computers
- C. The control will display only on smartphones and tablets
- D. The control will consume less space on the page when rendered on a smartphone or tablet

Answer: D

NEW QUESTION 8

View the exhibits.

Question **Exhibit 1** **Exhibit 2**

CX_CUST2 (Page)

Layout **Order**

Customer: NNNNN

Description:

Short Description:

Industry ID:

Contract Date:

Customer Type

- ☐ Customer
- ☐ Partner
- ☐ Employee

Question **Exhibit 1** **Exhibit 2**

CX_CUST2 (Page)

Layout **Order**

Tab Order	Field ID	Lvl	Label	Type	Field	Record
1	1	0	Customer	Edit Box	CUSTOMER_ID	PSU_CUST_TBL
2	2	0	Description	Edit Box	DESCR	PSU_CUST_TBL
3	3	0	Short Description	Edit Box	DESCRSHORT	PSU_CUST_TBL
4	4	0	Customer	Radio Button	CUSTOMER_TY	PSU_CUST_TBL
5	5	0	Customer Type	Group Box		PSU_CUST_TBL
6	6	0	Industry ID	Edit Box	INDUSTRY_ID	PSU_CUST_TBL
7	7	0	Contract Date	Edit Box	CONTRACT_DT	PSU_CUST_TBL
8	8	0	Partner	Radio Button	CUSTOMER_TY	PSU_CUST_TBL
9	9	0	Employee	Radio Button	CUSTOMER_TY	PSU_CUST_TBL

Based on the page layout, what changes are necessary for the page tab order?

- A. Field IDs should be in the following order: 1, 2, 3, 6, 7, 5, 4, 8, 9
- B. Field IDs should be in the following order: 1, 2, 3, 5, 4, 6, 7, 9, 8
- C. Field IDs should be in the following order: 1, 2, 3, 6, 5, 4, 7, 8, 9
- D. Field IDs should be in the following order: 1, 2, 3, 5, 4, 6, 7, 8, 9
- E. Tab order is correct, no changes are required

Answer: D

NEW QUESTION 9

This SQL definition uses effective-date logic to return the current row from PSXLATITEM.

```
SQLExec ("SELECT A.XLATSHORTNAME, A.XLATLONGNAME  
FROM PSXLATITEM A  
WHERE A.EFFDT = (  
SELECT MAX(B.EFFDT)  
FROM PSXLATITEM B  
WHERE A.FIELDNAME = B.FIELDNAME  
AND A.FIELDVALUE = B.FIELDVALUE  
AND B.EFFDT <= date)");
```

Which meta-SQL element should be substituted for date so the SQL correctly returns the current row as of the run date for all supported database platforms?

- A. %CurretnDateIn
- B. %CurrentDateOut
- C. %Date
- D. %DateTime
- E. %EffDtCheck

Answer: D

NEW QUESTION 10

Assume that you open a PeopleSoft application record definition using Application Designer. Which two of the following statements are false? (Choose two.)

- A. In Application Designer, with a record definition open, you can insert additional fields
- B. Any changes made to the record definition in Application Designer are stored in a PeopleTools table as application metadata
- C. In Application Designer, with a record definition open, you can view transactional application data, such as inventory items provided by a vendor
- D. In Application Designer, with a record definition open, you can add or update transactional application data, such as adding a new inventory item
- E. In Application Designer, with a record definition open, you can modify the key structure of the record definition
- F. In Application Designer, with a record definition open, you can set a record field to be a required field for which an end user must specify a value when adding a new row of transactional data

Answer: BF

NEW QUESTION 10

When you attempt to drag a subrecord onto a page, the page definition displays an error. What is the reason for this?

- A. The Use tab on the Page Properties dialog box does not have the Page Size field set to Auto-size so that the page automatically expands to facilitate all the fields in the subrecord
- B. The subrecord definition does not have the Record Type value set to SubRecord
- C. The Use tab on the Record Properties dialog box for the subrecord definition does not have the Parent record field set correctly in the Record Relationship settings
- D. The Page Type Field is not set to be Subpage on the Use tab of the Page Properties dialog box

Answer: C

NEW QUESTION 12

You configure embedded pop-up help for a scroll area header or a grid header by .

- A. using the Insert menu to insert a Popup help button on the grid header or scroll area header in place of the Navigation bar
- B. adding a hyperlink or push button to the header linking to the delivered online help
- C. adding a hyperlink or push button to the header linking to your custom online help
- D. selecting Message Catalog Popup on the Label tab of the Grid Properties Dialog box or the Scroll Area Properties dialog box

Answer: D

NEW QUESTION 13

Select three elements that must be present before registering a component. (Choose three.)

- A. Permission list
- B. Folder
- C. Content reference definition
- D. Primary table
- E. Menu definition

Answer: ABE

NEW QUESTION 15

Which event or events should you use for PeopleCode to autogenerate the purchase order number, the high-level key for the orders page?

- A. SaveEdit
- B. SavePostChange
- C. SaveEdit and SavePreChange
- D. SavePreChange
- E. SaveEdit and SavePostChange

Answer: B

NEW QUESTION 17

Put the events of the search process flow in the correct order.

1. User selects the search key.
2. Search page is built dynamically.
3. Search key is passed to the component.
4. Component search record properties are accessed.
5. User clicks in the menu to access a component.

- A. 5, 4, 2, 1, 3
B. 1, 5, 4, 3, 2
C. 5, 2, 4, 1, 3
D. 1, 3, 4, 2, 5

Answer: C

NEW QUESTION 21

Your client has asked you to update their PeopleCode programs to replace outdated system variables with current system variables. Which system variable replaces %OperatorId?

- A. %Session
B. %CurrentUser
C. %UserId
D. %SessionUser
E. %SessionId
F. %SignonUserId

Answer: C

NEW QUESTION 25

You have a record definition open in Application Designer, and when you select the Build menu, you notice that the Current Definition option is disabled. (greyed out.)

Why did this happen?

- A. You have already build the table
B. The record definition Record Type is set to Dynamic View
C. You saved the record definition using a non-standard SQL table name
D. You are not connected to the database

Answer: C

NEW QUESTION 30

Select three steps that comprise the user interface phase of PeopleSoft application development? (Choose three.)

- A. Register components
B. Define fields
C. Define pages
D. Define components
E. Define records
F. Build records

Answer: ACD

NEW QUESTION 31

Which three statements are correct? (Choose three.)

- A. Derived/work fields and variables can be displayed on the page
B. Derived/work fields and variables provide temporary storage of calculated values
C. Derived/work fields and record fields provide permanent storage of values
D. Derived/work fields and record fields can be displayed on the page
E. Derived/work fields and record fields can include executable PeopleCode programs

Answer: ADE

NEW QUESTION 36

You are asked to modify the Customer Products Purchased application to provide auto complete on the search page for the customer name. This application uses the following definitions.

- Search record: PSU_CUST_TBL
- Record: PSU_CUST_PROD
- Page: PSU_CUST_PROD
- Component: PSU_CUST_PROD

How will you implement this change?

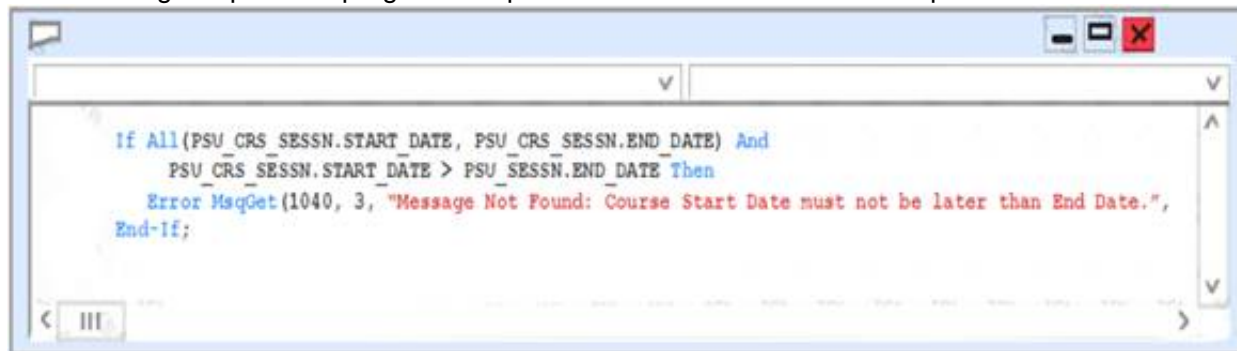
- A. Select the Enable Autocomplete when used in Search Record check box for the DESCR field on the PSU_ CUST_PROD record

- B. Select the Enable Autocomplete when used in Search Record check box for the CUSTOMER_ID field on the PSU_CUST_PROD record
- C. Select the Force Search Processing check box on the Use tab of the Component Properties dialog box for PSU_CUST_PROD
- D. Select the Enable Autocomplete when used in Search Record check box for the DESCR field on the PSU_CUST_TBL record
- E. Select the Enable Autocomplete when used in Search Record check box for the CUSTOMER_ID field on the PSU_CUST_TBL record
- F. Select the Show Prompt Button check box for the DESCR field on the PSU_CUST_PROD page

Answer: C

NEW QUESTION 37

The following PeopleCode program compares two editable fields on a component.



On which event or events should the program be placed?

- A. FieldEdit and RowInit
- B. SaveEdit and SavePreChange
- C. SaveEdit
- D. FieldChange and SavePreChange
- E. SaveEdit and RowInit
- F. FieldEdit

Answer: B

NEW QUESTION 42

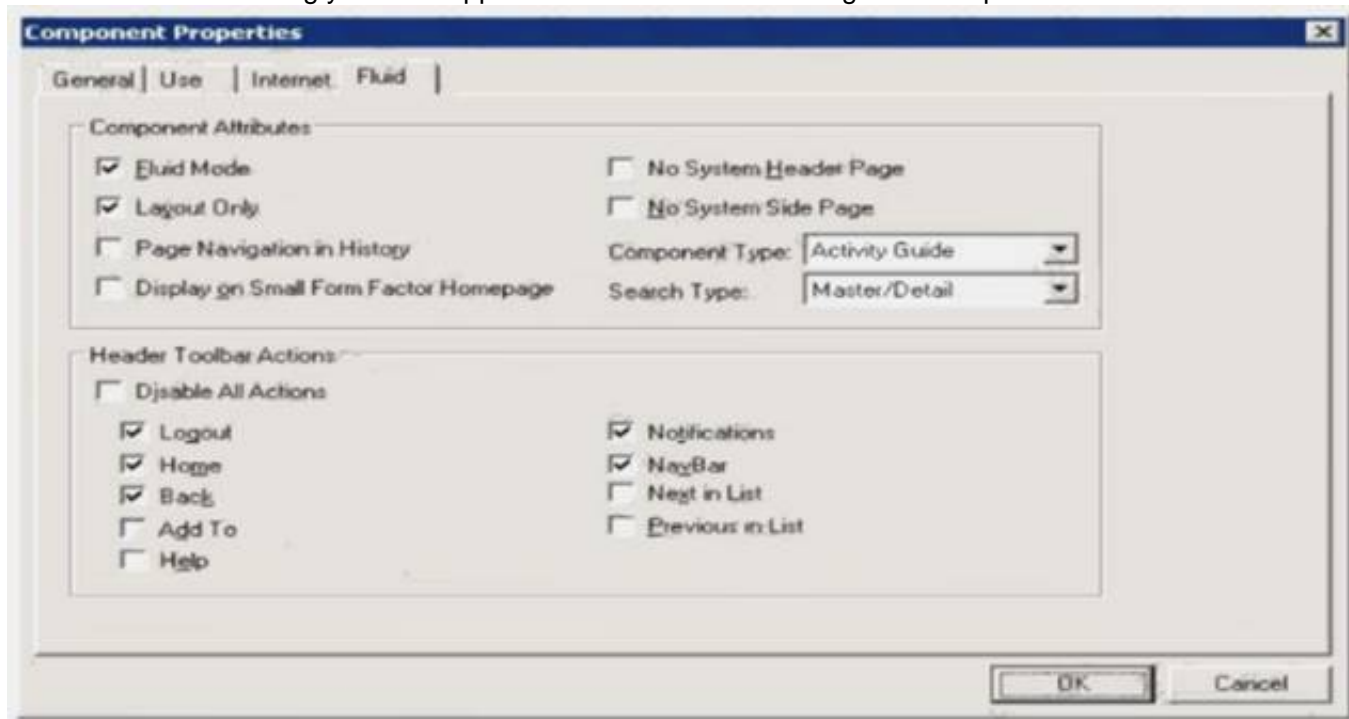
While in the office on his desktop computer, a user personalizes his fluid homepage by adding a tile for the My contacts component. The next day at the airport, the user attempts the access the My Contacts component using his smartphone. Unfortunately, he cannot see the My Contacts tile on his field homepage. Why is the user unable to find the My Contacts tile on his fluid homepage when using his smartphone?

- A. The user does not have the Smartphone Access check box enabled in his personalization's
- B. The smartphone does not have a supported version of its operating system
- C. The style, ps_homepage-phone, has not been applied on the Fluid tab of the Component Properties dialog box
- D. The Display on Small Form Factor Homepage check box has not been selected on the Fluid tab of the Component Properties dialog box
- E. The component does not contain any pages of type Small Form Factor

Answer: D

NEW QUESTION 47

An end user is accessing your field application for the first time using her smartphone. What will the end user notice based on the settings shown in this example?



- A. The end user will not be able to navigate back to pages previously accessed
- B. The end user will need to navigate to the classic homepage to access this component because it is an activity guide
- C. To save screen space on the small screen and to send less data to the phone, only the layout outline of the page elements will be visible
- D. The Notifications button will not appear in the fluid header for smartphones
- E. The end user will not see a tile on the fluid homepage to tap for accessing for the component

Answer: A

NEW QUESTION 48

Which three actions occur during the component build process? (Choose three.)

- A. Component record RowInit PeopleCode runs
- B. Record field FieldFormula PeopleCode runs
- C. Component record RowInsert PeopleCode runs
- D. All component-level PeopleCode runs
- E. Record field RowInsert PeopleCode runs
- F. Record field RowInit PeopleCode runs
- G. All rows in the record are loaded into the component buffer

Answer: BCD

NEW QUESTION 50

When testing a fluid page, one of your colleagues says that the page suddenly is not rendering as expected. He believes he may have accidentally deleted a group box on the page. Using the developer tools of your browser, you inspect the HTML elements.

Which vital structural element of a fluid page must still exist in order for the page to render properly?

- A. <div class="ps_anchor"...>.</div>
- B. <div class="ps_main"...>.</div>
- C. <div class="ps_box-pagetabs"...>.</div>
- D. <div class="ps_pspagecontainer_srch"...>.</div>
- E. <div class="ps_box-group psc_layout psc_apps_content"...>.</div>

Answer: E

NEW QUESTION 52

Identify three true statements describing PeopleTools tables. (Choose three.)

- A. PeopleTools tables can be updated equally using PeopleTools, such as Application Designer, or the SQL editing tool for your database platform
- B. PeopleTools tables use the naming convention of having the prefix PD*, as in PSRECDEFN
- C. PeopleTools tables store metadata that defines the elements of a PeopleSoft application
- D. PeopleTools tables contain the same content, regardless of the PeopleSoft application installed on the database
- E. PeopleTools tables have a consistent structure, regardless of the PeopleSoft application installed on the database
- F. PeopleTools tables are empty until the implementation team has loaded the application's transactional data

Answer: ABC

NEW QUESTION 57

You surround a set of page controls with a group box on a fluid page. When rendered in HTML, what tag will those page controls be within?

- A. <div>
- B. <embed>
- C. <iframe>
- D. <datalist>
- E. <frame>
- F. <area>

Answer: E

NEW QUESTION 62

You are testing the new Customer Table page and notice that you are missing a Return to Search button on the page.

To add this button in Application Designer, open the Component Properties dialog box and .

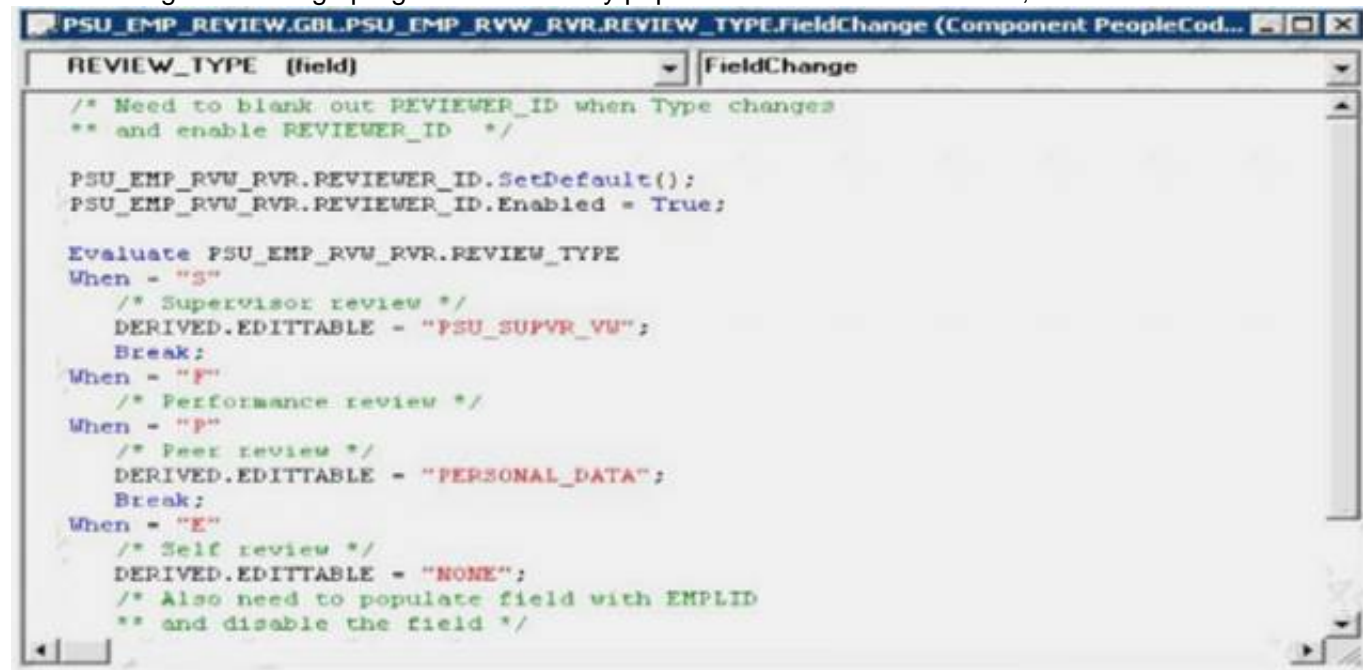
- A. On the Internet tab, select Return to Search

- B. On the Internet tab, select Page Navigation in History
- C. On the Use tab, select Update/Display
- D. On the Internet tab, select Return to List
- E. On the Use tab, select Return to Search

Answer: D

NEW QUESTION 64

The following FieldChange program conditionally populates DERIVED.EDITABLE, based on the value of PSU_EMP_RVW_RVR.REVIEW_TYPE.



Another similar program should be placed in a companion event. In which other event should the other PeopleCode program be placed?

- A. SavePreChange
- B. FieldEdit
- C. Rowinit
- D. Rowinsert

Answer: C

NEW QUESTION 69

Review the definition of the Calculate user-defined function.

```

1 Function Calculate(&rate As number in, &output As number out)
2   &output = &output * (1 + &rate);
3   &rate = 0; /* Reset the rate to zero */
4 End-Function;

```

Then, review the invocation of this Calculate function in a FieldChange program:

```

1 Local number &incr = 0.12;
2
3 Declare Function Calculate PeopleCode FUNCLIB_ED_SVCS.CALC FieldFormula;
4 Calculate(&incr, EMPLOYEE.SALARY);

```

Which two corrections are required to allow these PeopleCode programs to be saved as syntactically correct programs that produce valid results? (Choose two.)

- A. In the FieldChange program, move line 3 to become line 1
- B. In the function definition, delete the in and out modifiers on line 1
- C. Delete line 3 from the function definitio
- D. In the FieldChange program, add the following as line 5:&incr = 0;
- E. Replace line 4 in the FieldChange program with the following:

Answer: BD

NEW QUESTION 73

Which PeopleCode statement should you use to instantiate a Row object for the current row?

- A. &Row = GetRow();
- B. &Row = &Rowset.GetCurrRow;
- C. &Row =&Rowset.GetRow;
- D. &Row = CreateRow();
- E. &Row = &Rowset.Row();

Answer: C

NEW QUESTION 75

Which two statements indicate the actions that need to be taken before changing the default field label on a field definition? (Choose two.)

- A. Check if the default label is used in any page definitions
- B. Check if the default label is used in any record definitions
- C. Check if the default label is used in any component definitions
- D. Check if the default label is used in any PeopleCode
- E. Check if the default label is active

Answer: AB

NEW QUESTION 80

.....

Thank You for Trying Our Product

* 100% Pass or Money Back

All our products come with a 90-day Money Back Guarantee.

* One year free update

You can enjoy free update one year. 24x7 online support.

* Trusted by Millions

We currently serve more than 30,000,000 customers.

* Shop Securely

All transactions are protected by VeriSign!

100% Pass Your 1Z0-632 Exam with Our Prep Materials Via below:

<https://www.certleader.com/1Z0-632-dumps.html>