

70-740 Dumps

Installation, Storage, and Compute with Windows Server 2016

<https://www.certleader.com/70-740-dumps.html>



NEW QUESTION 1

You have four servers named Server1, Server2, Server3, and Server4 that run Windows Server 2016.

Server1 and Server2 have the Hyper-V server role installed. Server1 hosts a virtual machine named VM1. Server2 hosts a virtual machine named VM2. Server3 hosts the disks and the configurations of both virtual machines on an SMB share named VMShare.

You use Server4 to manage Hyper-V operations on Server1 and Server2.

From Server4, you attempt to perform a live migration of VM1 and VM2, but you receive the following error message: "No credentials are available in the security package".

You need to ensure that you can perform the live migration of VM1 and VM2 between Server1 and Server2 while signed in to Server4.

What should you do?

- A. From Active Directory Users and Computers, modify the properties of Server4. Configure the delegation settings to trust the computer for delegation of cifs.
- B. From Windows PowerShell on Server3, run the remove-SMBMultiChannelConstraint cmdlet, and then assign Server4 Full Control permissions to VMShare.
- C. From Active Directory Users and Computers, modify the properties of Server1 and Server2. Configure the Delegation settings to trust the computers for delegation of the Microsoft Virtual System Migration Service.
- D. From Active Directory Users and Computers, modify the properties of your user account.
- E. Modify the Account is sensitive and cannot be delegated setting.

Answer: C

Explanation: References: <https://docs.microsoft.com/en-us/windows-server/virtualization/hyper-v/deploy/set-up-hosts-for-live-migration-without-failover-clustering>

NEW QUESTION 2

Note: This question is part of a series of questions that present the same scenario. Each question in the series contains a unique solution that might meet the stated goals. Some question sets might have more than one correct solution, while others might not have a correct solution.

After you answer a question in this section, you will NOT be able to return to it. As a result, these questions will not appear in the review screen.

You have a server named Server1 that runs Windows Server 2016. Server1 has the Hyper-V server role and Docker installed.

You pull the Microsoft/iis Docker image to Server1.

You need to view the available space in the Microsoft/iis Docker image. Solution: You run the command `docker run -d Microsoft/iis`.

You open Disk Management on Server1. Does this meet the goal?

- A. Yes
- B. No

Answer: B

NEW QUESTION 3

Note: This question is part of a series of questions that present the same scenario. Each question in the series contains a unique solution that might meet the stated goals. Some question sets might have more than one correct solution, while others might not have a correct solution.

After you answer a question in this section, you will NOT be able to return to it. As a result, these questions will not appear in the review screen.

You have two servers that run Windows Server 2016.

You have a server named Server1 that runs Windows Server 2016. Server1 has the Hyper-V server role and Docker installed.

You pull the Microsoft/iis Docker image to Server1.

You need to view the available space in the Microsoft/iis Docker image. Solution: You run the following commands.

`docker run --name container1 --isolation hyperv -d Microsoft/iis docker exec -i container1 cmd.exe dir`

Does this meet the goal?

- A. Yes
- B. No

Answer: B

NEW QUESTION 4

Note: This question is part of a series of questions that present the same scenario. Each question in the series contains a unique solution that might meet the stated goals. Some question sets might have more than one correct solution, while others might not have a correct solution.

After you answer a question in this section, you will NOT be able to return to it. As a result, these questions will not appear in the review screen.

You have two servers that run Windows Server 2016.

You have a server named Server1 that runs Windows Server 2016. Server1 has the Hyper-V server role and Docker installed.

You pull the Microsoft/iis Docker image to Server1.

You need to view the available space in the Microsoft/iis Docker image. Solution: You run the following commands.

`docker run --name container1 -d Microsoft/iis docker exec -i container1 cmd.exe`

`dir`

Does this meet the goal?

- A. Yes
- B. No

Answer: A

Explanation: References: https://docs.docker.com/engine/reference/commandline/container_exec/#options <https://www.windows-commandline.com/get-file-size-directory-size-command/>

NEW QUESTION 5

You have two Hyper V hosts named Server1 and Server2 that run Windows Server 2012 R2. The servers are nodes in a failover cluster named Cluster1.

You perform a rolling upgrade of the cluster nodes to Windows Server 2016.

You need to ensure that you can implement the Virtual Machine Load Balancing feature. Which cmdlet should you use?

- A. Update-ClusterNetWorkNameResource
- B. Set-GusterGroupSet
- C. Update-ClusterFunctionalLevel
- D. Set-CauClosterRole

Answer: C

Explanation: <https://docs.microsoft.com/en-us/windows-server/failover-clustering/cluster-operating-system-rollingupgrade#cluster-os-rolling-upgrade-process>

NEW QUESTION 6

You have a server named Server 1 that runs Windows Server 2016 Window, Defender is enabled on Server1. Server1 runs an application named App that stores various types of files in Microsoft OneDrive for Business, Microsoft OneDrive, and Microsoft SharePoint Online. Appt also Interacts with several local services, You need to prevent Windows Defender from scanning any files opened by Appl. Should you do on Server1?

- A. Run the Set-ExecutionPolicy cmdlet
- B. Form the Windows Defender settings, configure a file exclusion.
- C. From the Windows Defender settings, configure a process exclusion.
- D. Modify the cloud-based protection settings in Windows Defender.

Answer: B

Explanation: References:
<https://www.windowscentral.com/how-exclude-files-and-folders-windows-defender-antivirus-scans>

NEW QUESTION 7

DRAG DROP

Your network contains an Active Directory domain named adatim.com. The domain contains four member servers that run Windows Server 2016. On each server, you locally attach three disks and install the Failover Clustering feature. You need to create a volume that uses all the disks. The volume must be highly available. Which three cmdlets should you run in sequence? To answer, move the appropriate cmdlets from the list of cmdlets to the answer area and arrange them in the correct order.

Cmdlets

Answer Area


New-Cluster
Initialize-Disk
Enable-VMReplication
Enable-ClusterS2D
New-Volume
New-Partition



Answer:

Explanation: **Answer Area**

New-Cluster
Enable-ClusterS2D
New-Volume



NEW QUESTION 8

You have a Hyper-V server named Server1 that runs Windows Server 2012 R2. Server1 hosts a virtual machine named VM1 that runs Windows Server 2016. VM1 connects to an external virtual switch named Switch1. You can ping VM1 from Server1. You upgrade Server1 to Windows Server 2016.

You need to ensure that you can connect to VM1 by using PowerShell Direct. What should you do?

- A. Configure the firewall rules on Server1.
- B. Enable the Hyper-V extensible switch extensions on Server1.
- C. Upgrade the configuration version of VM1.
- D. Configure the firewall rules on VM1.

Answer: C

NEW QUESTION 9

You have a Nano Server named Nano1.

Nano1 is configured to perform real-time protection scans by using Windows Defender.

You need to ensure that all of the files located in D:\App1\Data are excluded from the real-time protection scans.

What should you do?

- A. From the properties of D:\App1\Data folder, modify the permissions.
- B. Run the Set-MpPreference cmdlet and specify the –ExclusionPath parameter.
- C. From a command prompt, run the attrib command and specify the –s parameter.
- D. Run the Get-ChildItem cmdlet and specify the –Exclude parameter.

Answer: B

NEW QUESTION 10

HOTSPOT

Your network contains an Active Directory forest. The forest contains two domain controllers named DC1 and DC2 that run Windows Server 2016. DC1 holds all of the operations master roles.

DC1 experiences a hardware failure.

You plan to use an automated process that will create 1000 user accounts. You need to ensure that the automated process can complete successfully.

Which command should you run? To answer, select the appropriate options in the answer area.

<div>▼</div> <div>Move-ADDirectoryServerOperatinMasterRole ntdsutil</div>	-identity "DC2" -OperationMasterRole	<div>▼</div> <div>PDCEmulator InfrastructureMaster RIDMaster SchemaMaster</div>	<div>▼</div> <div>Seize pdc -Force</div>
---	--------------------------------------	---	--

Answer:

Explanation:

<div>▼</div> <div>Move-ADDirectoryServerOperatinMasterRole ntdsutil</div>	-identity "DC2" -OperationMasterRole	<div>▼</div> <div>PDCEmulator InfrastructureMaster RIDMaster SchemaMaster</div>	<div>▼</div> <div>Seize pdc -Force</div>
---	--------------------------------------	---	--

NEW QUESTION 10

HOTSPOT

Your network contains an Active Directory domain named contoso.com. The domain contains a DNS server named Server1.

Server1 is configured to use a forwarder named server2.contoso.com that has an IP address of 10.0.0.10.

You need to prevent Server1 from using root hints if the forwarder is unavailable.

What command should you run? To answer, select the appropriate options in the answer area.

<div>▼</div> <div>Suspend-DnsServerZone Set-DnsServer Set-DnsServerForwarder Set-DnsServerRootHint</div>	<div>▼</div> <div>-Name "*" -PassThru -IPAddress 10.0.0.10 -NameServer server2.contoso.com -UseRootHints \$false</div>
--	--

Answer:

Explanation:

Suspend-DnsServerZone
Set-DnsServer
Set-DnsServerForwarder
Set-DnsServerRootHint

-Name "*" -PassThru
-IPAddress 10.0.0.10
-NameServer server2.contoso.com
-UseRootHints. \$false

NEW QUESTION 14

You have a Nano Server named Nano1.

Which cmdlet should you use to identify whether the DNS Server role is installed on Nano1?

- A. Find-NanoServerPackage
- B. Get-Package
- C. Find-Package
- D. Get-WindowsOptionalFeature

Answer: B

NEW QUESTION 18

You deploy a Hyper-V server named Served in an isolated test environment The test environment is prevented from accessing the Internet Server1 runs the Datacenter edition of Windows Server 2016. You plan to deploy the following guest virtual machines on the server

Quantity	Operating system	Domain member
10	Windows Server 2012 R2	Yes
4	Windows Server 2016	No
5	Windows Server 2016	Yes

Which activation model should you use for the virtual machines'?

- A. Multiple Activation Key (MAK)
- B. Automatic Virtual Machine Activation (AVMA)
- C. Original Equipment Manufacturer (OEM) key
- D. Key Management Service (KMS)

Answer: B

NEW QUESTION 20

HOTSPOT

Your network contains an Active Directory domain named contoso.com. The domain contains a DNS server named Server1

You enable Response Rate Limiting on Server1.

You need to prevent Response Rate Limiting from applying to hosts that reside on the network of 10.0.0.0/24.

Which cmdlets should you run? To answer, select the appropriate options in the answer area

First cmdlet to run:

Add-DnsServerClientSubnet
Enable-DnsServerPolicy
Set-DnsServerResponseRateLimiting
Set-DnsServerResponseRateLimitingExceptionlist

Second cmdlet to run:

Add- DnsServerResponseRateLimitingExceptionlist
Add-DnsServerQueryResolutionPolicy
Add-DnsServerZoneScope
Set-DnsServerDsSetting

Answer:

Explanation:

First cmdlet to run:

Add-DnsServerClientSubnet
Enable-DnsServerPolicy
Set-DnsServerResponseRateLimiting
Set-DnsServerResponseRateLimitingExceptionlist

V

Second cmdlet to run:

Add- DnsServerResponseRateLimitingExceptionlist
Add-DnsServerQueryResolutionPolicy
Add-DnsServerZoneScope
Set-DnsServerDsSetting

V

NEW QUESTION 21

DRAG DROP

You are deploying DirectAccess to a server named DA1. Da1 will be located behind a firewall and will have a single network adapter The intermediary network will be IPv4.

You need to configure firewall to support DirectAccess.

Which firewall rules should you create for each type of traffic? To answer, drag the appropriate ports and protocols to the correct traffic types. Each port and protocol may be used once, more than once, or not at all. You may need to drag the split bar between panes or scroll to view content

Ports and Protocols		Answer Area	
<div style="border: 1px solid #90EE90; padding: 5px; margin-bottom: 10px; text-align: center;">IP protocol ID 1</div> <div style="border: 1px solid #90EE90; padding: 5px; text-align: center;">TCP 443</div>	<div style="border: 1px solid #90EE90; padding: 5px; margin-bottom: 10px; text-align: center;">IP Protocol ID 41</div> <div style="border: 1px solid #90EE90; padding: 5px; text-align: center;">UDP 3544</div>	<p>Teredo traffic: <div style="border: 1px solid #DC143C; width: 150px; height: 25px; display: inline-block;"></div></p> <p>6to4 traffic: <div style="border: 1px solid #DC143C; width: 150px; height: 25px; display: inline-block;"></div></p> <p>IP-HTTPS: <div style="border: 1px solid #DC143C; width: 150px; height: 25px; display: inline-block;"></div></p>	

Answer:

Explanation:

Ports and Protocols		Answer Area	
<div style="border: 1px solid #90EE90; padding: 5px; margin-bottom: 10px; text-align: center;">IP protocol ID 1</div> <div style="border: 1px solid #90EE90; padding: 5px; text-align: center;">TCP 443</div>	<div style="border: 1px solid #90EE90; padding: 5px; margin-bottom: 10px; text-align: center;">IP Protocol ID 41</div> <div style="border: 1px solid #90EE90; padding: 5px; text-align: center;">UDP 3544</div>	<p>Teredo traffic: <div style="border: 1px solid #90EE90; padding: 5px; text-align: center;">UDP 3544</div></p> <p>6to4 traffic: <div style="border: 1px solid #90EE90; padding: 5px; text-align: center;">IP Protocol ID 41</div></p> <p>IP-HTTPS: <div style="border: 1px solid #90EE90; padding: 5px; text-align: center;">TCP 443</div></p>	

NEW QUESTION 22

You have a Nano Server named Nano1.

You deploy several containers to Nano1 that use an image named Image1. You need to deploy a new container to Nano1 that uses Image1.

What should you run?

- A. the Install-NanoServerPackage cmdlet
- B. theInstall-WindowsFeaturecmdlet

- C. the docker load command
- D. the docker run command

Answer: D

NEW QUESTION 27

You have an Active Directory domain named Contoso.com. The domain contains servers named Server1 and Server2 that run Windows Server 2016. You install the Remote Access server role on Server1. You install the Network Policy and Access Services server role on Server2. You need to configure Server1 to use Server2 as a RADIUS server. What should you do?

- A. From Routing and Remote Access, configure the authentication provider.
- B. From the Connection Manager Administration Kit, create a Connection Manager profile.
- C. From Server Manager, create an Access Policy.
- D. From Active Directory Users and Computers, modify the Delegation settings of the Server1 computer account.

Answer: A

NEW QUESTION 30

You have a server that runs Windows Server 2016. The server contains a storage pool named Pool1. Pool1 contains five physical disks named Disk1, Disk2, Disk3, Disk4, and Disk5. A virtual disk named VirtualDisk1 is stored in pool1. VirtualDisk1 uses the parity storage layout. Disk3 fails. You need to remove Disk3 from Pool1. Which two commands should you run? Each correct answer presents part of the solution.

- A. Update-StoragePool -FriendlyName Pool1
- B. Set-ResiliencySetting -StoragePool Pool1 -PhysicalDiskRedundancyDefault 4
- C. Reset-PhysicalDisk -FriendlyName Disk3
- D. Set-PhysicalDisk -FriendlyName Disk3 -Usage Retired
- E. Remove-PhysicalDisk -FriendlyName Disk3

Answer: BE

NEW QUESTION 35

Your network contains an Active Directory domain named contoso.com. The domain contains two servers named Server1 and Server2 that have the same hardware configuration. You need to asynchronously replicate volume F: from Server1 to Server2. What should you do?

- A. Run New-SRPartnership and specify the -ReplcationMode parameter.
- B. Install the Failover Clustering feature and create a new cluster resource group.
- C. Install the Failover Clustering feature and use Cluster Shared Volumes (CSV).
- D. Run Set-DfsrServiceConfiguration and specify the -RPCPort parameter.

Answer: A

NEW QUESTION 40

HOTSPOT

You have a server named Server1 that runs Windows Server 2016. Server1 has the Windows Application Proxy role service installed. You plan to deploy Remote Desktop Gateway (RD Gateway) services. Clients will connect to the RD Gateway services by using various types of devices including Windows, iOS, and Android devices. You need to publish the RD Gateway services through the Web Application Proxy. Which command should you run? To answer, select the appropriate options in the answer area.

Add-WebApplicationProxyApplication

Set-WebApplicationProxyApplication

Set-WebApplicationProxyConfiguration

-BackendServerURL 'https://rdg.contoso.com/rdg1/'

-ExternalCertificateThumbprint

'1a2b3c4d5e6f1a2b3c4d5e6f1a2b3c4d5e6f1a2b'

-ExternalURL 'https://rdg.contoso.com/rdg1'

-Name 'RDG1'

-ExternalPreAuthentication

ADFS

ADFSforOAuth

ClientCertificate

PassThrough

-BackendServerAuthenticationSPN 'HTTP/RDG1'

-ADFSRelyingPartyName 'Default provider'

Answer:

Explanation:

☐ **Add-WebApplicationProxyApplication**
☐ **Set-WebApplicationProxyApplication**
☐ **Set-WebApplicationProxyConfiguration**

```

-BackendServerURL 'https://rdg.contoso.com/rdg1/'
-ExternalCertificateThumbprint
'1a2b3c4d5e6f1a2b3c4d5e6f1a2b3c4d5e6f1a2b'

-ExternalURL 'https://rdg.contoso.com/rdg1'
-Name 'RDG1'

-ExternalPreAuthentication
☐ ADFS  

☐ ADFSforOAuth  

☐ ClientCertificate  

☐ PassThrough

-ADFSRelyingPartyName 'Default provider'

-BackendServerAuthenticationSPN 'HTTP/RDG1'
    
```

NEW QUESTION 44

HOTSPOT

You have a server named Served that runs Windows Server 2016. Server1 has the Windows Application Proxy role service installed. You are publishing an application named App1 that will use Integrated Windows authentication as shown in the following graphic.



Use the drop-down menus to select the answer choice that completes each statement based on the information presented in the graphic

Before you can complete the wizard, you must [answer choice]

☐ **change the external certificate**
☐ **configure the Backend server SPN**
☐ **select Enable HTTP to HTTPS redirection**

To ensure that users can access App1 externally, you must change the External URL to [answer choice.]

☐ **https://app1.contoso.com/app1**
☐ **https://server02.contoso.com/app1**
☐ **https://server02.contoso.com/publish/app1**

Answer:

Explanation:

Before you can complete the wizard, you must [answer choice]

▼

change the external certificate

configure the Backend server SPN

select Enable HTTP to HTTPS redirection

To ensure that users can access App1 externally, you must change the External URL to [answer choice.]

▼

<https://app1.contoso.com/app1>

<https://server02.contoso.com/app1>

<https://server02.contoso.com/publish/app1>

NEW QUESTION 45

You have a failover cluster named Cluster1.

A virtual machine named VM1 is a highly available virtual machine that runs on Cluster1. A custom application named App1 runs on VM1.

You need to configure monitoring of VM1. If App1 adds an error entry to the Application event log, VM1 should be automatically rebooted and moved to another cluster node.

Which tool should you use?

- A. Hyper-V Manager
- B. Failover Cluster Manager
- C. Server Manager
- D. Resource Monitor

Answer: B

NEW QUESTION 50

HOTSPOT

Your network contains an Active Directory domain named contoso.com. The domain contains four servers named Server1, Server2, Server3, and Server4 that run Windows Server 2016.

Server1 and Server2 are nodes in Hyper-V cluster named Cluster1. You have a highly available virtual machine named VM1.

Server1 is the owner node of VM1. Server3 and Server4 are nodes of a scale-out file server named Cluster2.

The storage on Server1 is configured as shown in the following table.

Location	Type
C:\ClusterStorage\Volume1	iSCSI Cluster Shared Volumes (CSV)
D:\	A locally attached disk
E:\	An iSCSI LUN
\\Cluster2\Share1	A file share on Cluster2

You need to move the virtual disk of VM1 to a different location.

What should you do? To answer, select the appropriate options in the answer area.

Tool you should move the virtual disk of VM1:

▼

Disk Management

Failover Cluster Manager

Hyper-V Manager

Server Manager

Location to which you should move the virtual disk of VM1:

▼

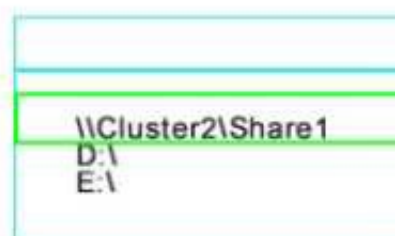
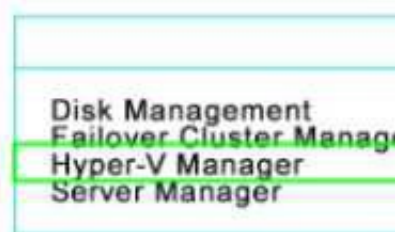
\\Cluster2\Share1

D:\

E:\

Answer:

Explanation:



NEW QUESTION 51

You are configuring a Windows Server 2016 failover cluster in a workgroup.

Before installing one of the nodes, you run the ipconfig /all command and receive the following output

```
Windows IP Configuration

Host Name . . . . . : Server1
Primary Dns Suffix . . . . . :
Node Type . . . . . : Hybrid
IP Routing Enabled. . . . . : No
WINS Proxy Enabled. . . . . : No
DNS Suffix Search List. . . . . :

Ethernet adapter Ethernet:

Connection-specific DNS Suffix . :
Description . . . . . : Microsoft Hyper-V Network Adapter
Physical Address. . . . . : 00-15-5D-01-62-17
DHCP Enabled. . . . . : Yes
Autoconfiguration Enabled . . . . : Yes
Link-local IPv6 Address . . . . . : fe80::7548:46d8:8ffc:d5ab%17(Preferred)
IPv4 Address. . . . . : 192.168.1.154(Preferred)
Subnet Mask . . . . . : 255.255.255.0
Default Gateway . . . . . : 192.168.1.10
DHCPv6 IAID . . . . . : 369099429
DHCPv6 Client DUID. . . . . : 00-01-00-01-1A-1D-5D-60-00-02-A5-4E-F4-85
DNS Servers . . . . . : 192.168.1.32
NetBIOS over Tcpip. . . . . : Disabled
```

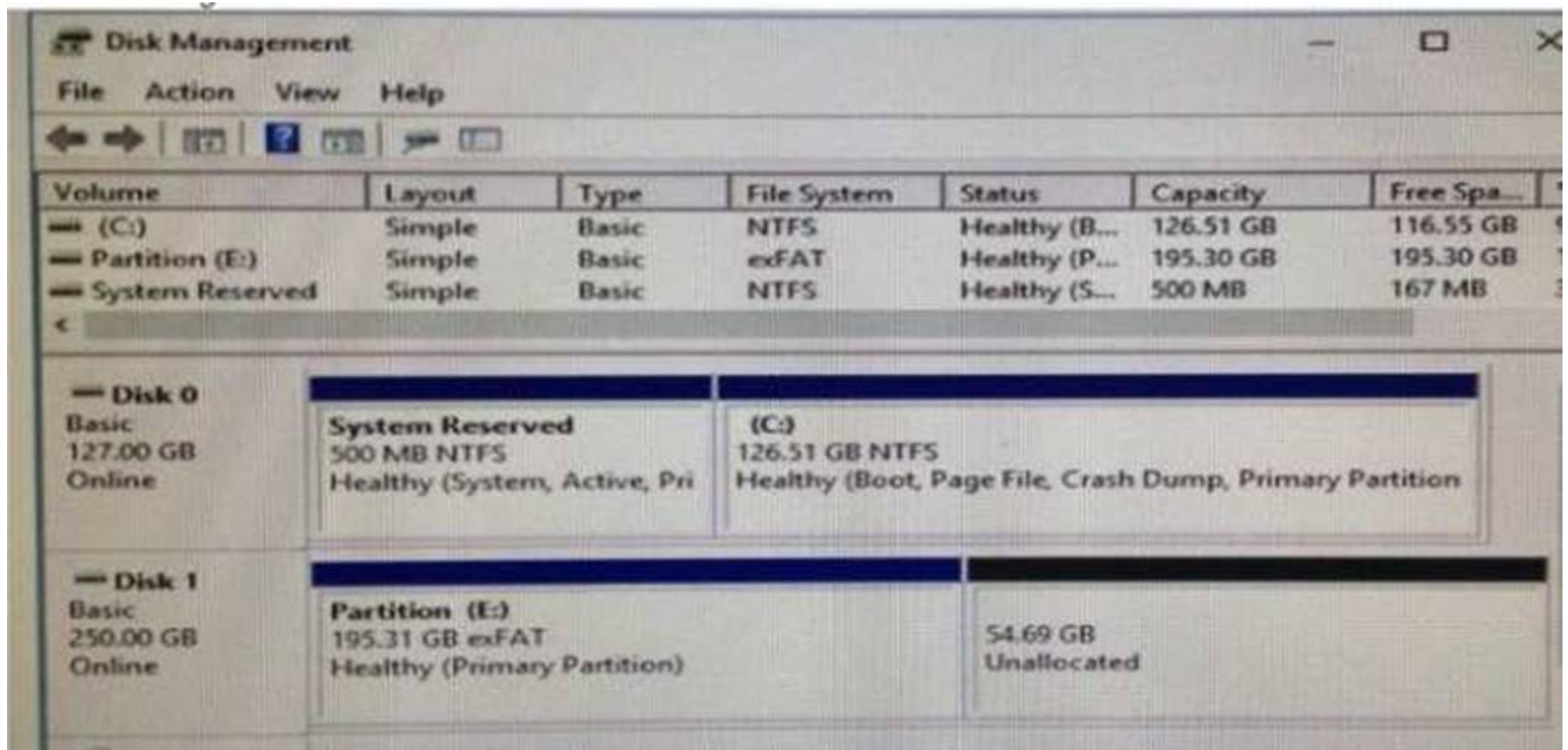
You need to ensure that Server 1 can be added as a node in the cluster. What should you do?

- A. Assign a static IP address
- B. Change the Node Type to Broadcast
- C. Configure a DNS suffix
- D. Enable NetBIOS over TCP/IP

Answer: C

NEW QUESTION 52

You have a server named Server 1 that runs Windows Server 2016. The disk configuration for Server 1 is shown in the exhibit.



You add Server1 to a cluster

You need to ensure that you can use Disk1 (or Storage Spaces Direct What should you do first?

- A. Delete Partition (E:)
- B. Set Disk1 to offline.
- C. Convert Disk 1 to a dynamic disk
- D. Convert Partition (E:) to ReFS

Answer: A

NEW QUESTION 56

HOTSPOT

Your network contains an Active Directory forest named contoso.com. The forest contains an Active Directory Federation Services (AD FS) farm.

You install Windows Server 2016 on a server named Server2

You need to configure Server2 as a node in the federation server farm

Which cmdlets should you run? To answer, select the appropriate options in the answer area

First cmdlet to run:

Install-AdfsFarm

Install-Package

Install-WindowsFeature

Second cmdlet to run:

Install-AdfsFarm

New-AdfsOrganization

Set-AdfsFarmInformation

Set-AdfsProperties

Answer:

Explanation:

First cmdlet to run:

▼

Install-AdfsFarm

Install-Package

Install-WindowsFeature

Second cmdlet to run:

▼

Install-AdfsFarm

New-AdfsOrganization

Set-AdfsFarmInformation

Set-AdfsProperties

NEW QUESTION 58

You have an application named App1. App1 is distributed to multiple Hyper-V virtual machines in a multitenant environment. You need to ensure that the traffic is distributed evenly among the virtual machines that host App1. What should you include in the environment?

- A. Network Controller and Windows Server Network Load Balancing (NLB) nodes
- B. Network Controller and Windows Server Software Load Balancing (SLB) nodes
- C. an RAS Gateway and Windows Server Network Load Balancing (NLB) nodes
- D. an RAS Gateway and Windows Server Software Load Balancing (SLB) nodes

Answer: D

NEW QUESTION 62

Your company has 10 offices. Each office has a local network that contains several Hyper-V hosts that run Windows Server 2016. All of the offices are connected by high speed, low latency WAN links.

You need to ensure that you can use QoS policies for Live Migration traffic between the offices. Which component should you install?

- A. the Multipath I/O feature
- B. the Routing role service
- C. the Network Controller server role
- D. the Canary Network Diagnostics feature
- E. the Data Center Bridging feature

Answer: CE

NEW QUESTION 63

HOTSPOT

You have an Active Directory domain named Contoso.com. The domain contains Hyper-V hosts named Server1 and Server2 that run Windows Server 2016. The Hyper-V hosts are configured to use NVGRE for network virtualization.

You have four virtual machines that are connected to an external switch. The virtual machines are configured as shown.

To which virtual machine or virtual machines can VM1 and VM3 connect? To answer, select the appropriate options in the answer area.

Virtual Machine Name	Hyper-V host	IP address	Netmask	GRE key
VM 1	Server1	192.168.1.16	255.255.255.0	16
VM 2	Server1	192.168.1.232	255.255.255.0	32
VM 3	Server2	192.168.1.32	255.255.255.0	32
VM 4	Server2	192.168.1.25	255.255.255.0	25
VM 5	Server2	192.168.1.116	255.255.255.0	16
VM 6	Server2	192.168.1.132	255.255.255.0	32

VM1 can connect to:

▼

VM2 only
VM5 only
VM2, VM3, VM5 and VM6 only
VM2, VM3, VM4, VM5, and VM6

VM3 can connect to:

▼

VM6 only
VM2, and VM6 only
VM4, VM5 and VM6 only
VM1, VM2, VM5, and VM6 only
VM1, VM2, VM4, VM5, and VM6

Answer:

Explanation:

VM1 can connect to:

▼

VM2 only
VM5 only
VM2, VM3, VM5 and VM6 only
VM2, VM3, VM4, VM5, and VM6

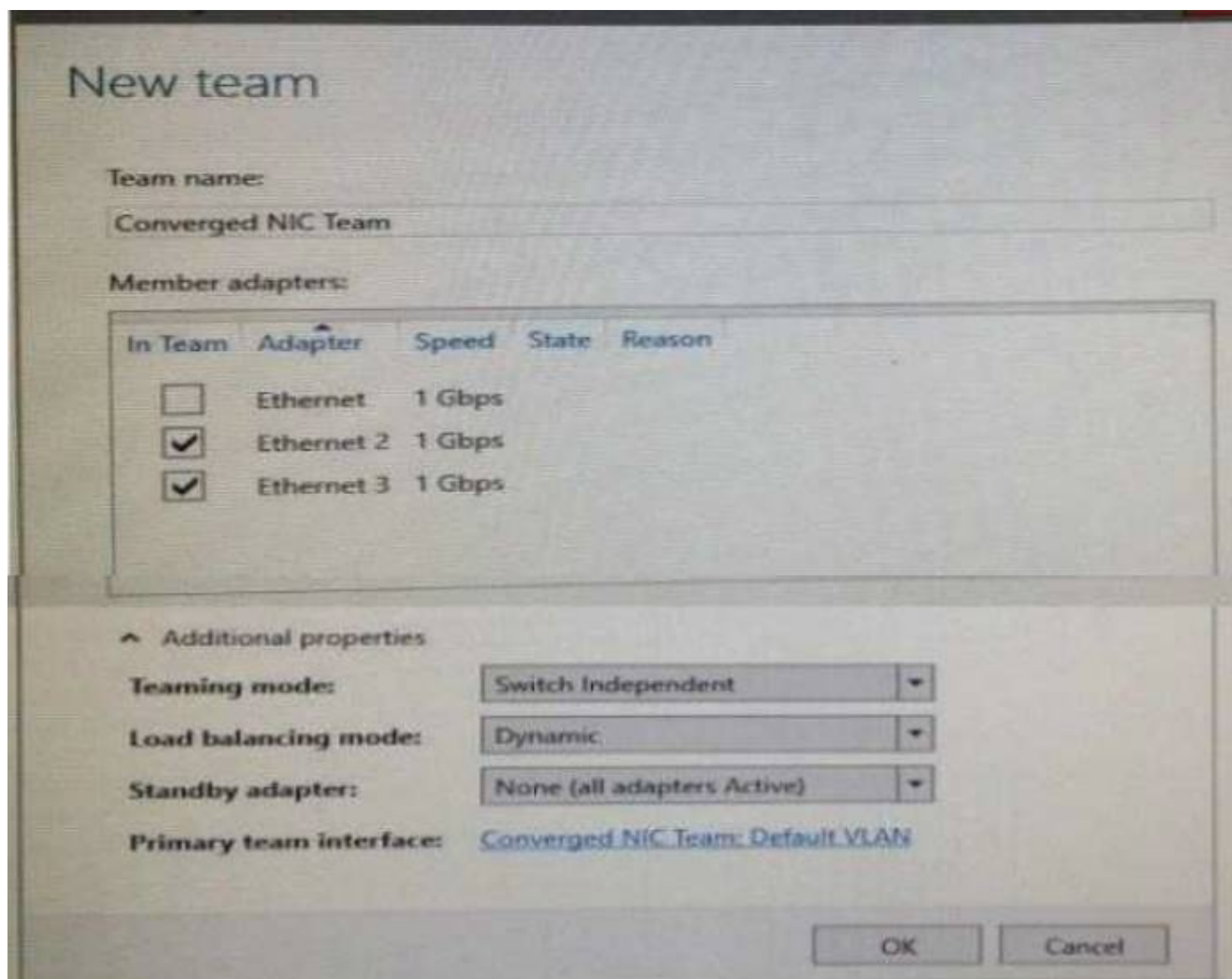
VM3 can connect to:

▼

VM6 only
VM2, and VM6 only
VM4, VM5 and VM6 only
VM1, VM2, VM5, and VM6

NEW QUESTION 64

You have a server named Server1 that runs Windows Server 2016. Server1 is a Hyper-V host that hosts a virtual machine named VM1. Server1 has three network adapter cards That connect to a virtual switch named vSwitch1.
You configure NIC Teaming on VM1 as shown in the exhibit.



You need to ensure that VM1 will retain access to the network if a physical adapter card fails on Server1. What should you do?

- A. From Hyper-V Manager on Server1, modify the settings of VM1.
- B. From Windows PowerShell on Server1, run the Set-VmSwitchcmdlet.
- C. From the properties of the NIC team on VM1, add the adapter named Ethernet to the NIC team.
- D. From the properties of the NIC team on VM1, change the load balancing of the NIC team.

Answer: A

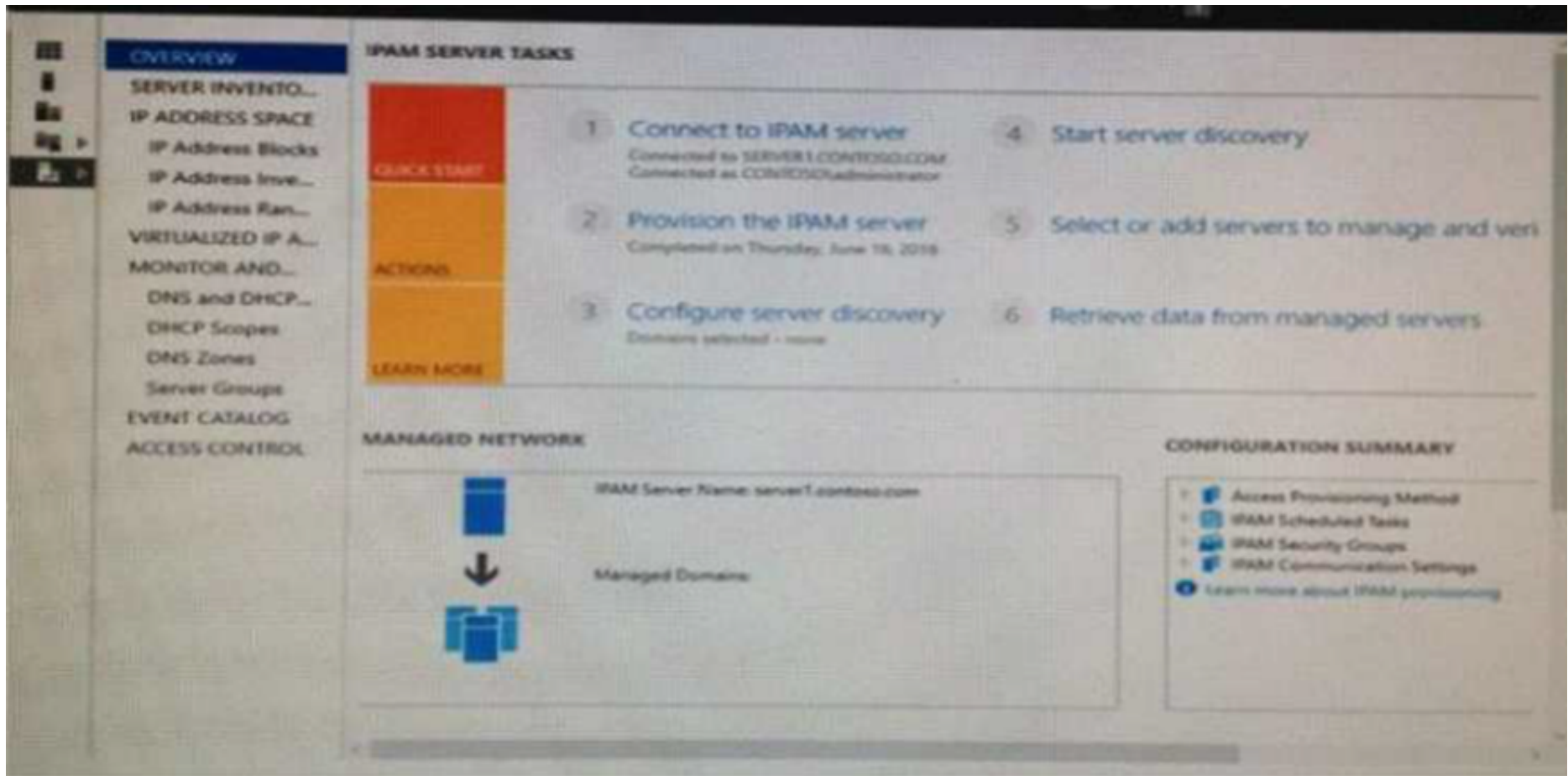
NEW QUESTION 66

HOTSPOT

Your company has a testing environment that contains an Active Directory domain named contoso.com. The domain contains a server named Server1 that runs Windows Server 2016. Server1 has IP Address Management (IPAM) installed. IPAM has the following configuration.

```
Version           : 6.3.0.1
Port              : 4885
ProvisioningMethod : Automatic
GpoPrefix         : IPAM
HMACKey           : System.Security.SecureString
```

The IPAM Overview page from Server Manager is shown in the IPAM Overview exhibit.



The group policy configurations are shown in the GPO exhibit.



For each of the following statements, select Yes if the statement is true Otherwise, select No

Statements	Yes	No
If a DNS server is added to contoso.com, the server will be discovered by IPAM automatically.	<input type="radio"/>	<input type="radio"/>
If you manually add a DHCP server named Server3 to IPAM and set the Manageability status to Managed, the IPAM_DHCP Group Policy will apply to Server3.	<input type="radio"/>	<input type="radio"/>
If you click Start server discovery, the domain controllers in contoso.com will be discovered by IPAM.	<input type="radio"/>	<input type="radio"/>

Answer:

Explanation:

Statements	Yes	No
If a DNS server is added to contoso.com, the server will be discovered by IPAM automatically.	<input type="radio"/>	<input checked="" type="radio"/>
If you manually add a DHCP server named Server3 to IPAM and set the Manageability status to Managed, the IPAM_DHCP Group Policy will apply to Server3.	<input checked="" type="radio"/>	<input type="radio"/>
If you click Start server discovery, the domain controllers in contoso.com will be discovered by IPAM.	<input type="radio"/>	<input checked="" type="radio"/>

NEW QUESTION 67

You need to modify the GPO prefix by IPAM. What should you do?

- A. Run theSet-IpamConfigurationcmdlet
- B. ClickProvision the IPAM serverin Server Manager.
- C. ClickConfigure server discoveryin Server Manage
- D. Run theInvoke-IpamGpoProvisioningcmdlet

Answer: A

NEW QUESTION 68

You need to ensure that VM1 and VM2 can communicate with each other only. The solution must prevent VM1 and VM2 from communicating with Server1. Which cmdlet should you use?

- A. Set-NetNeighbor
- B. Remove-VMSwitchTeamMember
- C. Set-VMSwitch
- D. Enable-VMSwitchExtension

Answer: C

NEW QUESTION 69

HOTSPOT

Your network contains an Active Directory domain named contoso.com. The domain contains a member server named Server1 that runs Windows Server 2016. You install IP Address Management (IPAM) on Server1. You select the automatic provisioning method, and then you specify a prefix of IPAM. You need to configure the environment for automatic IPAM provisioning. Which cmdlet should you run? To answer, select the appropriate options in the answer area.

▼

-Domain "Contoso.com"

▼

"IPAM1"

Add-IpamDiscoveryDomain
Enable-IpamCapability
Invoke-IpamGpoProvisioning
Set-IpamConfiguration

-AssetTag
-DiscoverDns
-GpoPrefixName
-ProvisioningMethod

Answer:

Explanation:

▼

-Domain "Contoso.com"

▼

"IPAM1"

Add-IpamDiscoveryDomain
Enable-IpamCapability
Invoke-IpamGpoProvisioning
Set-IpamConfiguration

-AssetTag
-DiscoverDns
-GpoPrefixName
-ProvisioningMethod

NEW QUESTION 70

DRAG DROP

Your network contains an Active Directory domain named contoso.com. The domain contains two servers named Server1 and Server2 that run Windows Server 2016. Server1 has IP Address Management (IPAM) installed. Server2 has Microsoft System Center 2016 Virtual Machine Manager (VMM) installed.

You need to integrate IPAM and VMM
Which types of objects should you create on each server? To answer, drag the appropriate object types to the correct servers Each object type may be used once, more than once, or not at all You may need to drag the split bar between panes or scroll to view content

Access policy

Run As Account

User Role

Network Service

Service Template

Server1:

Object

Server2:

Object

Object

Answer:

Explanation:

Server1

Access policy

Server2

Run As Account

Network Service

NEW QUESTION 73

HOTSPOT

Your network contains an Active Directory domain named contoso.com. The domain contains four servers named Server1. Server2. Server3. and Server4 that run Windows Server 2016.

Server1 has IP Address Management (IPAM) installed Server2, Server3, and Server4 have the DHCP Server role installed IPAM manages Server2. Server3, and Server4.

A domain user named User1 is a member of the groups shown in the following table

Server name	Group
Server1	IPAM Users
Server2	DHCP Administrators
Server3	DHCP Users
Server4	Users

Which actions can User1 perform? To answer, select the appropriate options in the answer area.

Actions	Yes	No
Use the DHCP console on Server1 to create a DHCP scope on Server2.	<input type="radio"/>	<input type="radio"/>
Use the DHCP console on Server1 to create a DHCP scope on Server3.	<input type="radio"/>	<input type="radio"/>
Use the IPAM node of Server Manager on Server1 to create a DHCP scope on Server4.	<input type="radio"/>	<input type="radio"/>

Answer:

Explanation:

Actions	Yes	No
Use the DHCP console on Server1 to create a DHCP scope on Server2.	<input checked="" type="radio"/>	<input type="radio"/>
Use the DHCP console on Server1 to create a DHCP scope on Server3.	<input type="radio"/>	<input checked="" type="radio"/>
Use the IPAM node of Server Manager on Server1 to create a DHCP scope on Server4.	<input type="radio"/>	<input checked="" type="radio"/>

NEW QUESTION 76

Note: This question is part of a series of questions that use the same similar answer choices. An answer choice may be correct for more than one question in the series. Each question is independent of the other questions in this series. Information and details provided in a question apply only to that question.
You have a two-node Hyper-V cluster named Cluster1. A virtual machine named VM1 runs on Cluster1.
You need to configure monitoring of VM1. The solution must move VM1 to a different node if the Print Spooler service on VM1 stops unexpectedly.
Which tool should you use?

- A. the clussvc.exe command
- B. the cluster.exe command
- C. the Computer Management console
- D. the configurehyperv.exe command
- E. the Disk Management console
- F. the Failover Cluster Manager console
- G. the Hyper-V Manager console
- H. the Server Manager Desktop app

Answer: F

NEW QUESTION 81

Note: This question is part of a series of questions that use the same similar answer choices. An answer choice may be correct for more than one question in the series. Each question is independent of the other questions in this series. Information and details provided in a question apply only to that question.
You have an Active Directory domain that contains two Hyper-V servers named Server1 and Server2. Server1 has Windows Server 2016 installed. Server2 has Windows Server 2012 R2 installed.
Each Hyper-V server has three network cards. Each network card is connected to a different subnet. Server1 contains a dedicated migration network.
Server2 contains a virtual machine named VM5.
You plan to perform a live migration of VM5 to Server1.
You need to ensure that Server1 uses all available networks to perform the live migration of VM5. What should you run?

- A. the Mount-VHD cmdlet
- B. the Diskpart command
- C. the Set-VHD cmdlet
- D. the Set-VM cmdlet
- E. the Set-VMHost cmdlet
- F. the Set-VMProcessor cmdlet
- G. the Install-WindowsFeature cmdlet
- H. the Optimize-VHD cmdlet

Answer: E

NEW QUESTION 86

Note: This question is part of a series of questions that use the same similar answer choices. An answer choice may be correct for more than one question in the series. Each question is independent of the other questions in this series. Information and details provided in a question apply only to that question.
You have a Hyper-V host named Server1 that runs Windows Server 2016. Server1 contains a virtual machine named VM1.
You need to ensure that you can use nested virtualization on VM1. What should you run on Server1?

- A. the Mount-VHD cmdlet
- B. the Diskpart command
- C. the Set-VHD cmdlet
- D. the Set-VM cmdlet
- E. the Set-VMHost cmdlet
- F. the Set-VMProcessor cmdlet
- G. the Install-WindowsFeature cmdlet
- H. the Optimize-VHD cmdlet

Answer: F

NEW QUESTION 91

Note: This question is part of a series of questions that use the same similar answer choices An answer choice may be correct for more than one question in the series Each question is independent of the other questions in this series. Information and details provided in a question apply only to that question
You have a Hyper-V host named Server1 that runs Windows Server 2016 Server1 has a virtual machine named VM1 that uses a single VHDX file VM1 is configured shown in the following table

Configuration	Details
Virtual machine generation	V2
Operating system	Windows 8
File system	NTFS
Number of partitions	1
Disk type	Basic
Unallocated disk space	100 GB

You plan to use VM1 as a virtual Machine Template to deploy shielded virtual machines You need to ensure that VM1 can be used to deploy shielded virtual machines What should you run?

- A. the Mount-VHD cmdlet
- B. the Diskpart command
- C. the Set-VHD cmdlet
- D. the Set-VM cmdlet
- E. the Set-VMHost cmdlet
- F. the Set-VMProcessor cmdlet
- G. the Install-WindowsFeature cmdlet
- H. the Optimize-VHD cmdlet

Answer: B

NEW QUESTION 93

In this section, you'll see one or more sets of questions with the same scenario and problem Each question presents a unique solution to the problem, and you must determine whether the solution meets the stated goals Any of the solutions might solve the problem. It is also possible that none of the solutions solve the problem.
Once you answer a question in this section, you will NOT be able to return to it As a result. these questions will not appear in the review screen
Note This question is part of a series of questions that present the same scenario Each question in the series contains a unique solution Determine whether the solution meets the stated goals.
Your network contains an Active Directory forest named contoso.com. The forest contains a member server named Server1 that runs Windows Server 2016 All domain controllers run Windows Server 2012 R2
Contoso com has the following configuration

```
PS C:\> (Get-ADForest). ForestMode
Windows2008R2Forest

PS C:\> (Get-ADDomain). DomainMode
Windows2008R2Domain
PS C:\>
```

You plan to deploy an Active Directory Federation Services (AD FS) farm on Server1 and to configure device registration You need to configure Active Directory to support the planned deployment. Solution You raise the domain functional level to Windows Server 2012R2.
Does this meet the goal?

- A. Yes
- B. No

Answer: B

NEW QUESTION 95

In this section, you'll see one or more sets of questions with the same scenario and problem Each question presents a unique solution to the problem, and you must determine whether the solution meets the stated goals. Any of the solutions might solve the problem. It is also possible that none of the solutions solve the problem.
Once you answer a question in this section, you will NOT be able to return to it. As a result, these questions will not appear in the review screen
Note: This question is part of a series of questions that present the same scenario. Each question in the series contains a unique solution. Determine whether the solution meets the stated goals.
Your network contains an Active Directory domain named contoso.com. The domain contains a DNS server named Server1. All client computers run Windows 10. On Server1, you have the following zone configuration

ZoneName	ZoneType	IsAutoCreated	IsDsIntegrated	IsReverseLookupZone	IsSign
-----	-----	-----	-----	-----	-----
_msdcs.contoso.com	Primary	False	True	False	False
adatum.com	Forwarder	False	False	False	
contoso.com	Primary	False	True	False	False
fabrikam.com	Primary	False	False	False	True
TrustAnchors	Primary	False	True	False	False

You have the following subnets defined on Server1.

Name	IPv4Subnet	IPv6Subnet
-----	-----	-----
Subnet1	{10.0.0.0/24}	
Subnet2	{10.0.1.0/24}	
Subnet3	{192.168.15.0/24}	
Subnet4	{172.16.1.0/24}	

You need to prevent Server1 from resolving queries from DNS clients located on Subnet4 Server1 must resolve queries from all other DNS clients Solution From a Group Policy object (GPO) in the domain, you modify the Network List Manager Policies Does this meet the goal?

- A. Yes
- B. No

Answer: B

NEW QUESTION 100

In this section, you'll see one or more sets of questions with the same scenario and problem Each question presents a unique solution to the problem, and you must determine whether the solution meets the stated goals. Any of the solutions might solve the problem. It is also possible that none of the solutions solve the problem.
Once you answer a question in this section, you will NOT be able to return to it. As a result, these questions will not appear in the review screen
Note: This question is part of a series of questions that present the same scenario. Each question in the series contains a unique solution. Determine whether the solution meets the stated goals.
Your network contains an Active Directory domain named contoso.com. The domain contains a DNS server named Server1. All client computers run Windows 10. On Server1, you have the following zone configuration

ZoneName	ZoneType	IsAutoCreated	IsDsIntegrated	IsReverseLookupZone	IsSign
-----	-----	-----	-----	-----	-----
_msdcs.contoso.com	Primary	False	True	False	False
adatum.com	Forwarder	False	False	False	
contoso.com	Primary	False	True	False	False
fabrikam.com	Primary	False	False	False	True
TrustAnchors	Primary	False	True	False	False

You have the following subnets defined on Server1.

Name	IPv4Subnet	IPv6Subnet
-----	-----	-----
Subnet1	{10.0.0.0/24}	
Subnet2	{10.0.1.0/24}	
Subnet3	{192.168.15.0/24}	
Subnet4	{172.16.1.0/24}	

You need to prevent Server1 from resolving queries from DNS clients located on Subnet4 Server1 must resolve queries from all other DNS clients Solution From the Security setting of each zone on Server1, you modify the permissions Does this meet the goal?

- A. Yes
- B. No

Answer: B

NEW QUESTION 105

In this section, you'll see one or more sets of questions with the same scenario and problem Each question presents a unique solution to the problem, and you must determine whether the solution meets the stated goals. Any of the solutions might solve the problem. It is also possible that none of the solutions solve the problem.
Once you answer a question in this section, you will NOT be able to return to it. As a result, these questions will not appear in the review screen
Note: This question is part of a series of questions that present the same scenario. Each question in the series contains a unique solution. Determine whether the solution meets the stated goals.
Your network contains an Active Directory domain named contoso.com. The domain contains a DNS server named Server1. All client computers run Windows 10.

On Server1, you have the following zone configuration

ZoneName	ZoneType	IsAutoCreated	IsDsIntegrated	IsReverseLookupZone	IsSign
-----	-----	-----	-----	-----	-----
_msdcs.contoso.com	Primary	False	True	False	False
adatum.com	Forwarder	False	False	False	False
contoso.com	Primary	False	True	False	False
fabrikam.com	Primary	False	False	False	True
TrustAnchors	Primary	False	True	False	False

You have the following subnets defined on Server1.

Name	IPv4Subnet	IPv6Subnet
-----	-----	-----
Subnet1	{10.0.0.0/24}	
Subnet2	{10.0.1.0/24}	
Subnet3	{192.168.15.0/24}	
Subnet4	{172.16.1.0/24}	

You need to prevent Server1 from resolving queries from DNS clients located on Subnet4 Server1

must resolve queries from all other DNS clients

Solution From Windows Firewall with Advanced Security on Server1, you create an inbound rule Does this meet the goal?

- A. Yes
- B. No

Answer: A

NEW QUESTION 109

In this section, you'll see one or more sets of questions with the same scenario and problem Each

question presents a unique solution to the problem, and you must determine whether the solution meets the stated goals Any of the solutions might solve the problem. It is also possible that none of the solutions solve the problem.

Once you answer a question in this section, you will NOT be able to return to it As a result. these questions will not appear in the review screen

Note This question is part of a series of questions that present the same scenario Each question in the series contains a unique solution Determine whether the solution meets the stated goals.

Your network contains an Active Directory forest named contoso.com. The forest contains a member server named Server1 that runs Windows Server 2016 All domain controllers run Windows Server 2012 R2

Contoso com has the following configuration

```
PS C:\> (Get-ADForest). ForestMode
Windows2008R2Forest

PS C:\> (Get-ADDomain). DomainMode
Windows2008R2Domain
PS C:\>
```

You plan to deploy an Active Directory Federation Services (AD FS) farm on Server1 and to configure

device registration You need to configure Active Directory to support the planned deployment. Solution You raise the forest functional level to Windows Server 2012R2.

Does this meet the goal?

- A. Yes
- B. No

Answer: A

NEW QUESTION 112

Note: This question is part of a series of questions that present the same scenario. Each question in

the series contains a unique solution that might meet the stated goals. Some question sets might have more than one correct solution, while others might not have a correct solution.

After you answer a question in this section, you will NOT be able to return to it. As a result, these questions will not appear in the review screen.

You have two servers that run Windows Server 2016.

You plan to create a Network load Balancing (NLB) cluster that will contain both servers. You need to configure the network cards on the servers for the planned NLB configuration.

Solution: You configure the network cards to be on the same subnet and to have dynamic IP addresses. You configure the cluster to use multicast.

Does this meet the goal?

- A. Yes
- B. No

Answer: B

Explanation:

References:

<https://technet.microsoft.com/en-us/windows-server-docs/networking/technologies/network-load-balancing>**NEW QUESTION 117**

Note: This question is part of a series of questions that present the same scenario. Each question in the series contains a unique solution that might meet the stated goals. Some question sets might

have more than one correct solution, while others might not have a correct solution.

After you answer a question in this section, you will NOT be able to return to it. As a result, these questions will not appear in the review screen.

You are a server administrator at a company named Contoso, Ltd.

Contoso has a Windows Server 2016 Hyper-V environment configured as shown in the following table.

Hyper-V host name	Configuration	Virtual switch name
Host1	- Uses an Intel processor - Is a member of a SAN named SAN1	Switch1
Host2	- Uses an AMD processor - Has local storage only	Switch2
Host3	- Uses an Intel processor - Is a member of a SAN named SAN1	Switch1
Host4	- Uses an Intel processor - Has local storage only	Switch2

All of the virtual switches are of the external type.

You need to ensure that you can move virtual machines between the hosts without causing the virtual machines to disconnect from the network.

Solution: You implement live migration by using Host3 and Host4. Does this meet the goal?

A. Yes

B. No

Answer: A

NEW QUESTION 121

Note: This question is part of a series of questions that present the same scenario. Each question in the series contains a unique solution that might meet the stated goals. Some question sets might have more than one correct solution, while others might not have a correct solution.

Your network contains an Active Directory forest

You install Windows Server 2016 on 10 virtual machines.

You need to deploy the Web Server (IIS) server role identically to the virtual machines.

Solution: You use Windows PowerShell Desired State Configuration (DSC) to create a default configuration and then you apply the configuration the virtual machines.

A. Yes

B. No

Answer: A

Explanation:

References:

<https://www.simple-talk.com/sysadmin/powershell/powershell-desired-state-configuration-the-basics/>**NEW QUESTION 126**

Note: This question is part of a series of questions that present the same scenario. Each question in the series contains a unique solution that might meet the stated goals. Some question sets might have more than one correct solution, while others might not have a correct solution.

Your network contains an Active Directory forest

You install Windows Server 2016 on 10 virtual machines.

You need to deploy the Web Server (IIS) server role identically to the virtual machines.

Solution: From a Group policy object (GPO), you create an application control policy, and then you apply the policy to the virtual machines.

Does this meet the goal?

A. Yes

B. No

Answer: B

NEW QUESTION 130

Note: This question is part of a series of questions that present the same scenario. Each question in the series contains a unique solution that might meet the stated goals. Some question sets might have more than one correct solution, while others might not have a correct solution.

Your network contains an Active Directory forest

You install Windows Server 2016 on 10 virtual machines.

You need to deploy the Web Server (IIS) server role identically to the virtual machines.

Solution: You create a software installation package, and then you publish the package to the virtual machines by using a Group Policy object (GPO)
Does this meet the goal?

- A. Yes
- B. No

Answer: B

NEW QUESTION 135

HOTSPOT

You have a server named Server1 that runs Windows Server 2016 server.

Server1 has the Docker daemon configured and has a container named Container1.

You need to mount the folder C:\Folder1 on Server1 to C:\ContainerFolder in Container1.

Which command should you run? To answer, select the appropriate options in the answer area.

Answer Area

▼	▼	▼	▼
Copy-ContainerFile	-Name Container1 -Path	C:\Folder1:C:\ContainerFolder	Container1
Docker	run -it -v	%windir%\ContainerFolder	Server1
Set-Service			

Answer:

Explanation:

Answer Area

▼	▼	▼	▼
Copy-ContainerFile	-Name Container1 -Path	C:\Folder1:C:\ContainerFolder	Container1
Docker	run -it -v	%windir%\ContainerFolder	Server1
Set-Service			

NEW QUESTION 136

HOTSPOT

You implement a Windows Server 2016 failover cluster named Cluster1 as a highly available file server.

You run the Get-Cluster cmdlet and receive the following output.

```

AddEvictDelay                : 60
AdministrativeAccessPoint    : Dns
AutoAssignNodeSite           : 0
AutoBalancerMode             : 2
AutoBalancerLevel            : 1
ClusSvcHangTimeout           : 135
ClusSvcRegroupStageTimeout    : 5
ClusSvcRegroupTickInMilliseconds : 300
ClusterEnforcedAntiAffinity   : 0
ClusterFunctionalLevel        : 9
ClusterUpgradeVersion         : 7
ClusterGroupWaitDelay         : 120
ClusterLogLevel              : 3
ClusterLogSize                : 300
DatabaseReadWriteMode         : 0
DefaultNetworkRole            : 3
Description                   :
Domain                        : contoso.com
EnableSharedVolumes           : Enabled
FixQuorum                     : 0
Id                            : ec6121be-f816-426b-b550-72cafb943f1b
Name                          : cluster1
  
```

Use the drop-down menus to select the answer choice that completes each statement based on the information presented in the graphic.

Answer Area

You can perform Cluster-Aware Updating (CAU) in [answer choice].

	▼
self-updating mode only	
remote-updating mode only	
remote-updating mode and self-updating mode	

You can use [answer choice] to create a file share in Cluster1.

	▼
DFS Management	
Failover Cluster Manager	
File Server Resource Manager	
Server Manager	

Answer:

Explanation:

Answer Area

You can perform Cluster-Aware Updating (CAU) in [answer choice].

	▼
self-updating mode only	
remote-updating mode only	
remote-updating mode and self-updating mode	

You can use [answer choice] to create a file share in Cluster1.

	▼
DFS Management	
Failover Cluster Manager	
File Server Resource Manager	
Server Manager	

NEW QUESTION 139

You have a Windows Server 2016 Hyper-V failover cluster that contains two nodes named Node1 and Node2. On Node1, you create a virtual machine named VM01 by using Hyper-V Manager. You need to configure VM01 to move to Node2 automatically if Node1 becomes unavailable. What should you do?

- A. From Failover Cluster manager, run the configure Role actions.
- B. From Hyper-V Manager, click VM01 and click Enable Replication.
- C. From Hyper-V Manager Click Node 1 and the modify the hyper-V settings.
- D. From Windows Powershell, run the Enable-VMReplication cmdlet.

Answer: A

Explanation:

<http://windowsitpro.com/hyper-v/make-vm-highly-available-windows-server-2012>

NEW QUESTION 142

DRAG DROP

Note: This question is part of a series of questions that use the same scenario. For your convenience, the scenario is repeated in each question. Each question presents a different goal and answer choices, but the text of the scenario is exactly the same in each question in this series.

Your network contains an Active Directory domain named contoso.com. The functional level of the forest and the domain is Windows Server 2008 R2. All servers in the domain run Windows Server 2016 Standard. The domain contains 300 client computers that run either Windows 8.1 or Windows 10. The domain contains nine servers that are configured as shown in the following table.

Name	Configuration	Planned changes
Server1	Domain controller	None
Server2	File server	Run Failover Clustering and Storage Spaces Direct
Server3	File server	Run Failover Clustering and Storage Spaces Direct
Server4	Hyper-V host	Run shielded virtual machines
Server5	Hyper-V host	None
Server6	Member server	Run Active Directory Federation Services (AD FS)
VM1	Virtual machine hosted on Server5	None
VM2	Virtual machine hosted on Server5	None
VM3	Virtual machine hosted on Server5	None

The virtual machines are configured as follows:

- Each virtual machine has one virtual network adapter.
- VM1 and VM2 are part of a Network Load Balancing (NLB) cluster.
- All of the servers on the network can communicate with all of the virtual machines.

You need to install the correct edition of Windows Server 2016 to support the planned changes for Server2, Server3, Server4, and Server5. Which edition or editions should you choose for each server? To answer, drag the appropriate editions to the correct servers. Each edition may be used once, more than once, or not at all. You may need to drag the split bar between panes or scroll to view content.

Editions

Standard only

Standard or Datacenter

Datacenter only

Answer Area

Server2:

Edition

Server3:

Edition

Server4:

Edition

Server6:

Edition

Answer:

Explanation:

Editions

Standard only

Standard or Datacenter

Datacenter only

Answer Area

Server2:

Datacenter only

Server3:

Datacenter only

Server4:

Datacenter only

Server6:

Standard or Datacenter

NEW QUESTION 145

Note This question is part of a series of questions that use the same scenario. For your convenience, the scenario is repeated in each question. Each question presents a different goal and answer choices, but the text of the scenario is exactly the same in each question in this series.

Start of Repeated Scenario:

Your network contains an Active Directory domain named contoso.com The functional level of the forest and the domain is Windows Server 2008 R2 All servers in the domain run Windows Server 2016 Standard. The domain contains 300 client computers that run either Windows 8.1 or Windows 10. The domain contains nine servers that are configured as shown in the following table.

Name	Configuration	Planned changes
Server1	Domain controller	<i>None</i>
Server2	File server	Run Failover Clustering and Storage Spaces Direct
Server3	File server	Run Failover Clustering and Storage Spaces Direct
Server4	Hyper-V host	Run shielded virtual machines
Server5	Hyper-V host	<i>None</i>
Server6	Member server	Run Active Directory Federation Services (AD FS)
VM1	Virtual machine hosted on Server5	<i>None</i>
VM2	Virtual machine hosted on Server5	<i>None</i>
VM3	Virtual machine hosted on Server5	<i>None</i>

The virtual machines are configured as follows:

- Each virtual machine has one virtual network adapter
- VM1 and VM2 are part of a Network Load Balancing (NLB) cluster.
- All of the servers on the network can communicate with all of the virtual machines. End of repeated Scenario.

On server4, you plan to provision a new volume that will be used to create large, fixed-size VHDX files.

Which type of file system should you use the new volume to minimize the amount of time required to create the VHDX files?

- A. ReFS
- B. NTFS
- C. CVFS
- D. exFAT

Answer: A

NEW QUESTION 147

Your network contains a new Active Directory domain named contoso.com.

You have a security policy that states that new servers should run Nano Server whenever possible. Which server role can be deployed on a Nano Server?

- A. Active Directory Domain Services
- B. DHCP Server
- C. Network Policy and Access Services
- D. DNS Server / Web Server (IIS)

Answer: D

NEW QUESTION 148

You have a server named Server1 that runs Windows Server 2016.

The Windows Server 2016 installation media is mounted as drive D.

You copy the NanoServerImageGenerator folder from the D:\NanoServer folder to the C:\NanoServer folder.

You need to create a custom Nano Server image that includes the Hyper-V server role. The image will be used to deploy Nano Servers to physical servers.

Which two commands should you run? Each correct answer presents part of the solution.

- A. New-NanoServerImage –Edition Standard –DeploymentType Guest –MediaPath D:\ -TargetPath.\NanoServerImage\NanoServer.wim –Compute
- B. Install-PackageProvider NanoServerPackage
- C. Import-PackageProvider NanoServerPackage
- D. New-NanoServerImage –Edition Standard –DeploymentType Host –MediaPath D:\ -TargetPath.\NanoServerImage\NanoServer.wim–Compute
- E. Import-Module C:\NanoServer\NanoServerImageGenerator

Answer: DE

NEW QUESTION 150

DRAG DROP

You have a network that contains several servers that run Windows Server 2016.

You need to use Desired State Configuration (DSC) to configure the servers to meet the following requirements:

- Install the Web Server server role
- Start the World Wide Web Publishing service.

How should you configure the DSC resources? To answer, drag the appropriate values to the correct locations. Each value may be used once, more than once, or not at all. You may need to drag the split bar between panes or scroll to view content.

Values

Name
Service
WindowsFeature
WindowsProcess
Present
Source
Running
Stopped

Answer Area

```
Value WebServerRole

{
    Ensure = " Value "
    Name = "Web-Server"
}

Value WorldWideWebPublishing

{
    Name = "W3SVC"

    StartupType = "Automatic"

    State = " Value "
```

Answer:

Explanation:

Values

Name
Service
WindowsFeature
WindowsProcess
Present
Source
Running
Stopped

Answer Area

```
WindowsFeature WebServerRole

{
    Ensure = " Present "
    Name = "Web-Server"
}

Service WorldWideWebPublishing

{
    Name = "W3SVC"

    StartupType = "Automatic"

    State = " Running "
```

NEW QUESTION 154

You have a server named Server1 that runs Windows Server 2016. You need to install the DNS Server role on Server1. What should you run?

- A. the dns.exe command
- B. the optionalfeature.exe command
- C. the Install-Package cmdlet
- D. the Enable-WindowsOptionalFeature cmdlet

Answer: D

NEW QUESTION 158

You have a server named Server 1 that runs Windows Server 2016.

Server 1 has Internet connectivity. You have a Nano Server image.

You need to download and save a Nano Server package in the Nano Server image. The package is NOT included in the Windows Server 2016 installation media.

Which two cmdlets should you run on Server1.

- A. Set-PackageSource
- B. Install-PackageProvider
- C. Add-AppxProvisionedPackage
- D. Save-NanoServerPackage
- E. Add-WindowsPackage

Answer: BD

NEW QUESTION 161

You have a server named Server 1 that runs Windows Server 2016 and has the Hyper-V server role installed.

On Server1, you plan to create a virtual machine named VM1. You need to ensure that you can start VM1 from the network.

What are two possible ways to achieve the goal? Each correct answer presents a complete solution.

- A. Create a generation 2 virtual machine.
- B. Create a generation 1 virtual machine and run the Enable-NetAdapterPackageDirect cmdlet.
- C. Create a generation 1 virtual machine that has a legacy network adapter.
- D. Create a generation 1 virtual machine and configure a single root I/O virtualization (SRV-IO) interface for the network adapter.

Answer: AC

NEW QUESTION 164

You have a Hyper-V host that runs Windows Server 2016. The host contains a virtual machine named

VM1. VM1 has resource metering enabled. You need to use resource metering to track the amount of network traffic that VM1 sends to the 10.0.0.0/8 network.

Which cmdlet should you run?

- A. Add-VMNetworkAdapter
- B. Set-VMNetworkAdapter
- C. New-VMResourcePool
- D. Set-VMNetworkAdapterRoutingDomainMapping

Answer: A

NEW QUESTION 168

Note: This question is part of a series of questions that present the same scenario. Each question in the series contains a unique solution that might meet the stated goals. Some question sets might have more than one correct solution, while others might not have a correct solution.

After you answer a question in this section, you will NOT be able to return to it. As a result, these questions will not appear in the review screen.

You have a server named Server1 that runs Windows Server 2016.

Server1 hosts a line-of-business application named App1. App1 has a memory leak that occasionally causes the application to consume an excessive amount of memory.

You need to log an event in the Application event log whenever App1 consumes more than 4 GB of memory.

Solution: You create a performance counter alert data collector. Does this meet the goal?

- A. Yes
- B. No

Answer: A

NEW QUESTION 169

After you answer a question in this section, you will NOT be able to return to it. As a result, these questions will not appear in the review screen.

You have a server named Server1 that runs Windows Server 2016.

You plan to use Windows Server Backup to back up all of the data on Server1. You create a new volume on Server1.

You need to ensure that the new volume can be used as a backup target. The backup target must support incremental backups.

Solution: You mount the volume to C:\Backup, and you format the volume by using FAT32. Does this meet the goal?

- A. Yes
- B. No

Answer: A

NEW QUESTION 170

After you answer a question in this section, you will NOT be able to return to it. As a result, these questions will not appear in the review screen.

You have a server named Server1 that runs Windows Server 2016.

You plan to use Windows Server Backup to back up all of the data on Server1. You create a new volume on Server1.

You need to ensure that the new volume can be used as a backup target. The backup target must support incremental backups.

Solution: You mount the volume to C:\Backup, and you format the volume by using exFAT. Does this meet the goal?

- A. Yes

B. No

Answer: B

NEW QUESTION 174

Your network contains an Active Directory domain. The domain contains a new file server named Server1 that runs a Server Core installation of Windows Server 2016. Server1 has an ReFS-formatted volume D: and NTFS-formatted volume E: The volumes do not contain any data. You install the Data Deduplication role service on Server1. You need to implement Data Deduplication for volumes on D: and E:. Solution: From Windows PowerShell, you run Format-Volume E: -FileSystem ReFS and Enable- DeDupVolume -Volume D:,E:. Does this meet the goal?

- A. Yes
- B. No

Answer: A

Explanation:

References: <https://docs.microsoft.com/en-us/windows-server/storage/data-deduplication/understand>

NEW QUESTION 176

Your network contains an Active Directory domain. The domain contains a new file server named Server1 that runs a Server Core installation of Windows Server 2016. Server1 has an ReFS-formatted volume D: and NTFS-formatted volume E: The volumes do not contain any data. You install the Data Deduplication role service on Server1. You need to implement Data Deduplication for volumes on D: and E:. Solution: From Windows PowerShell, you run Format-Volume D: -FileSystem EXFat and Enable- DeDupVolume -Volume D:,E:. Does this meet the goal?

- A. Yes
- B. No

Answer: A

NEW QUESTION 181

You have a Nano Server that runs Windows Server 2016. The Nano Server runs on a physical machine. You have not Installed any packages on the server. You attach a new disk to the server, and you initialize the disk as a GPT disk. You need to create an RefS-formatted volume on the new disk. What should you do first?

- A. From the physical server, log on to the Nano Server Recovery Console.
- B. Install the Microsoft-Nano'Server-Host-Package package.
- C. Run me Format-Vokime cmdlet and specify the -FileSystem switch.
- D. Install the Microsoft NanoServef-Storage-Package package.

Answer: C

NEW QUESTION 183

DRAG DROP
You install a new Nano Server named Nano1. Nano1 is a member of a workgroup and has an IP address of 192.168.1.10. You have a server named Server1 that runs Windows Server 2016. From Server1, you need to establish a Windows PowerShell session to Nano1. How should you complete the PowerShell script? To answer, drag the appropriate cmdlets to the correct targets. Each cmdlet may be used once, more than once, or not at all. You may need to drag the split bar between panes or scroll to view content.

Cmdlets	Answer Area
Enable-PSRemoting	\$ip = "192.168.1.10"
Enter-PSSession	\$user = "Administrator"
Set-Item	Cmdlet WSMAN:\localhost\Client\TrustedHosts "192.168.1.10"
Set-ItemProperty	Cmdlet -ComputerName \$ip -Credential \$user
Set-LocalUser	

Answer:

Explanation:

How to access Nano Server
Because Nano Server does not support a local session, it must be accessed remotely. References: <https://msdn.microsoft.com/en->

us/library/mt708805(v=vs.85).aspx

NEW QUESTION 186

Your network contains an Active Directory domain. The domain contains two Hyper-V hosts. You plan to perform live migrations between the hosts. You need to ensure that the live migration traffic is authenticated by using Kerberos. What should you do first?

- A. From Server Manager, install the Host Guardian Service server role on a domain controller.
- B. From Active Directory Users and Computers, add the computer accounts for both servers to the Cryptographic Operators group.
- C. From Active Directory Users and Computers, modify the Delegation properties of the computer accounts for both servers.
- D. From Server Manager, install the Host Guardian Service server role on both servers.

Answer: C

Explanation: If you have decided to use Kerberos to authenticate live migration traffic, configure constrained delegation before you proceed to the rest of the steps.

To configure constrained delegation

NEW QUESTION 191

HOTSPOT

You have a Hyper-V host named Server1 that runs Windows Server 2016.

You deploy a virtual machine named VM1 to Server1. VM1 runs Windows Server 2016. You need to ensure that you can install the Hyper-V server role on VM1.

Which command should you run? To answer, select the appropriate options in the answer area.

Answer Area

Enable-VMIntegrationService
Set-VM
Set-VMBios
Set-VMFirmware
Set-VMHost
Set-VMProcessor

SERVER1 - EnableEnhancedSessionMode \$true
SERVER1 - EnableSecureBoot on
SERVER1 - ExposeVirtualizationExtensions \$true
VM1 - EnableEnhancedSessionMode \$true
VM1 - EnableSecureBoot on
VM1 - ExposeVirtualizationExtensions \$true

Answer:

Explanation:

References:

<https://docs.microsoft.com/en-us/virtualization/hyper-v-on-windows/user-guide/nested-virtualization>

NEW QUESTION 196

You have two Hyper-V hosts named Server1 and Server2 that run Windows Server 2016. Server1 and Server2 are connected to the same network.

On Server1 and Server2, you create an external network switch named Switch1. You have the virtual machines shown in the following table.

Virtual machine name	IP address	Subnet mask	Hyper-V host
VM1	192.168.1.16	255.255.255.0	Server1
VM2	192.168.1.32	255.255.255.0	Server2
VM3	192.168.1.48	255.255.255.0	Server2

All three virtual machines are connected to Switch1.

You need to prevent applications in VM3 from being able to capture network traffic from VM1 or VM2. The solution must ensure that VM1 retains network connectivity.

What should you do?

- A. On Server2, configure the VLAN ID setting of Switch1.
- B. On Server2, create an external switch and connect VM3 to the switch.
- C. Modify the subnet mask of VM1 and VM2.
- D. Configure network virtualization for VM1 and VM2.

Answer: D

NEW QUESTION 197

You need to implement network virtualization.

On which object should you configure the virtual subnet ID?

- A. Virtual switch
- B. Hyper-V server

- C. VM
- D. Virtual network adapter

Answer: A

NEW QUESTION 201

HOTSPOT

You have a server named Server1 that runs Windows Server 2016. Server1 is a Hyper-V host. You run the commands shown in the following graphic:



```
Select Administrator: Windows PowerShell

Windows PowerShell
Copyright (C) 2016 Microsoft Corporation. All rights reserved.

PS C:\Users\ServerAdmin> New-VmSwitch -Name TEAM1 -NetAdapterName "NIC 1" -EnableEmbeddedTeaming $true
PS C:\Users\ServerAdmin> Set-VmSwitch -Name TEAM1 -NetAdapterName "NIC 1"
```

Use the drop-down menus to select the answer choice that completes each statement based on the information presented in the graphic.

Answer Area

After running the commands, TEAM1 contains [answer choice] network adapters.

	▼
one	
two	
three	

If you run **Add-VmSwitchTeamMember -VmSwitchName TEAM1 -NetAdapterName "NIC4"**, TEAM1 will contain [answer choice] network adapters.

	▼
one	
two	
three	
four	

Answer:

Explanation:

Answer Area

After running the commands, TEAM1 contains [answer choice] network adapters.

	▼
one	
two	
three	

If you run **Add-VmSwitchTeamMember -VmSwitchName TEAM1 -NetAdapterName "NIC4"**, TEAM1 will contain [answer choice] network adapters.

	▼
one	
two	
three	
four	

NEW QUESTION 203

Note: This question is part of a series of questions that use the same or similar answer choices. An answer choice may be correct for more than one question in the series. Each question is independent of the other questions in this series. Information and details provided in a question apply only to that question.

You have two servers named Server1 and Server2 that run Windows Server 2016. Server1 and Server2 have the Hyper-V server role installed and are nodes in a failover cluster.

On Server1, an administrator creates a virtual machine named VM1. You need to configure VM1 for high availability.

Which tool should you use?

- A. the clussvc.exe command
- B. the cluster.exe command
- C. the Computer Management snap-in
- D. the configurehyperv.exe command
- E. the Disk Management snap-in
- F. the Failover Cluster Manager snap-in
- G. the Hyper-V Manager snap-in
- H. the Server Manager app

Answer: F

Explanation: References:

<http://windowsitpro.com/hyper-v/make-vm-highly-available-windows-server-2012>

NEW QUESTION 207

Note: This question is part of a series of questions that use the same or similar answer choices. An answer choice may be correct for more than one question in the series. Each question is independent of the other questions in this series. Information and details provided in a question apply only to that question.

You have two servers named Server1 and Server2 that run Windows Server 2016. Server1 and Server2 have the Hyper-V server role installed.

An iSCSI SAN connects to the network.

You create a LUN on the SAN and configure both servers to connect to the iSCSI target.

You create a failover cluster and add Server1 and Server2 to the cluster. You connect both servers to the iSCSI target and format the shared storage.

You need to add the shared storage to the cluster. The solution must ensure that virtual machines running on both nodes can access the shared storage simultaneously.

Which tool should you use?

- A. the clussvc.exe command
- B. the cluster.exe command
- C. the Computer Management snap-in
- D. the configurehyperv.exe command
- E. the Disk Management snap-in
- F. the Failover Cluster Manager snap-in
- G. the Hyper-V Manager snap-in
- H. the Server Manager app

Answer: F

Explanation: References:

[https://technet.microsoft.com/en-us/library/jj612868\(v=ws.11\).aspx](https://technet.microsoft.com/en-us/library/jj612868(v=ws.11).aspx)

NEW QUESTION 211

You create a Nano server image named Nano1.vhdx by using the New-NanoServerImage cmdlet. You attach Nano1.vhdx to a Generation 1 virtual machine named Nano1.

When you start Nano1, you get the following error message: "Boot failure. Reboot and select proper Boot device or Insert Boot Media in selected Boot device"

You need to successfully start Nano server. What should you do?

- A. Attach Nano1.vhdx to a SCSIcontroller.
- B. Recreate Nano1 as a Generation 2 virtual machine.
- C. Increase the memory of Nano1 to 512 Mb.
- D. Modify the BIOS settings of Nano1.

Answer: B

Explanation: A Generation 1 VM cannot boot from a vhdx disk; only a Generation 2 VM can boot from an vhdx disk.

NEW QUESTION 215

HOTSPOT

You have a DNS server named Server1.

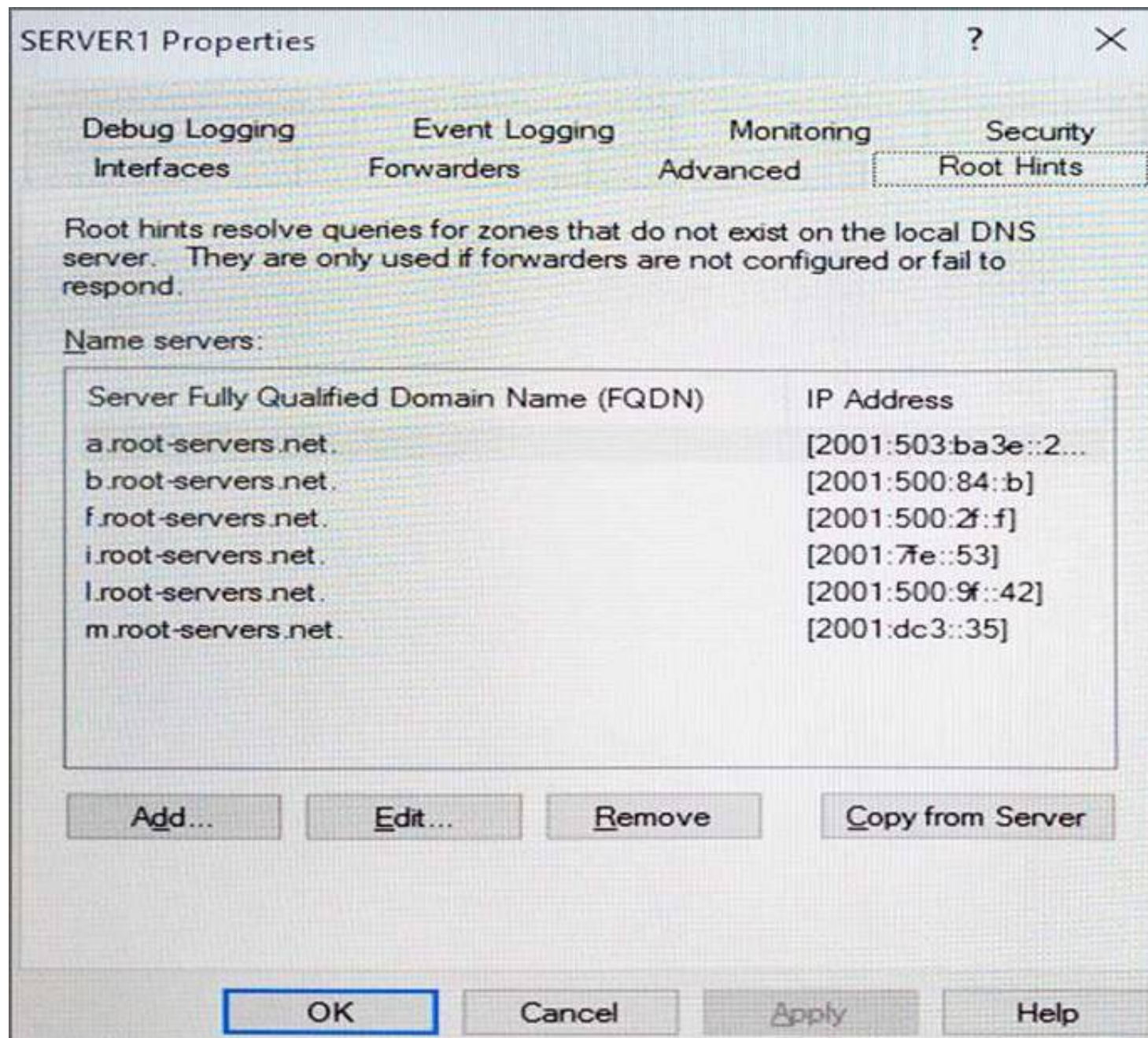
The forwarders are configured as shown in the Forwarders exhibit. (Click the Exhibit button.)

The screenshot shows the 'SERVER1 Properties' dialog box with the 'Forwarders' tab selected. The 'Forwarders' tab is highlighted with a blue border. The 'Advanced' tab is also visible. The 'Forwarders' section contains a message: 'Forwarders are not available because this server does not use recursion.' Below this message is a table with two columns: 'IP Address' and 'Server FQDN'. The 'IP Address' column contains the value '168.63.129.16'. The 'Server FQDN' column contains the value '<Unable to resolve>'. Below the table is a checkbox labeled 'Use root hints if no forwarders are available' which is checked. To the right of the checkbox is an 'Edit...' button. At the bottom of the dialog box are four buttons: 'OK', 'Cancel', 'Apply', and 'Help'. The 'OK' button is highlighted with a blue border.

The Advanced Settings are configured as shown in the Advanced exhibit. (Click the Exhibit button.)

The screenshot shows the 'SERVER1 Properties' dialog box with the 'Advanced' tab selected. The 'Advanced' tab is highlighted with a blue border. The 'Advanced' section contains the following settings: 'Server version number' is '10.0 14300 (0x37dc)'. 'Server options' includes a list of checkboxes: 'Disable recursion (also disables forwarders)' (checked), 'Enable BIND secondaries' (unchecked), 'Fail on load if bad zone data' (unchecked), 'Enable round robin' (checked and highlighted with a blue background), 'Enable netmask ordering' (checked), and 'Secure cache against pollution' (checked). 'Name checking' is set to 'Multibyte (UTF8)'. 'Load zone data on startup' is set to 'From Active Directory and registry'. 'Enable automatic scavenging of stale records' is unchecked. 'Scavenging period' is set to '0' days. A 'Reset to Default' button is located at the bottom right of the 'Advanced' section. At the bottom of the dialog box are four buttons: 'OK', 'Cancel', 'Apply', and 'Help'. The 'OK' button is highlighted with a blue border.

The Root Hints are configured as shown in the Root Hints exhibit. (Click the Exhibit button.)



Server1 does not contain any DNS zones.

For each of the following statements, select Yes if the statement is true. Otherwise, select No.

Answer Area

Statements	Yes	No
Server1 can resolve the names of hosts that are located on the Internet.	<input type="radio"/>	<input type="radio"/>
From Server1 Properties, if you perform a test from the Monitoring tab, the recursive test will pass.	<input type="radio"/>	<input type="radio"/>
Server1 is configured as a root DNS server.	<input type="radio"/>	<input type="radio"/>

Answer:

Explanation:

Recursion is disabled so internet hosts cannot be resolved. The recursive test fails because recursion is disabled. Server1 is not configured as a root server. The forwarders list would be greyed out if it was.

NEW QUESTION 219

HOTSPOT

Your network contains an Active Directory forest. The forest contains one domain named contoso.com. The domain contains two domain controllers named DC1 and DC2. DC1 holds all of the operations master roles.

During normal network operations, you run the following commands on DC2:

```
Move-AddDirectoryServerOperationMasterRole -Identity "DC2" - OperationMasterRole PDCEmulator
```

```
Move-AddDirectoryServerOperationMasterRole -Identity "DC2" - OperationMasterRole RIDMaster
```

DC1 fails.

You remove DC1 from the network, and then you run the following command:

Move-ADDirectoryServerOperationMasterRole -Identity "DC2" - OperationMasterRole SchemaMaster

For each of the following statements, select Yes if the statement if true. Otherwise, select No.

Answer Area

Statements	Yes	No
DC2 holds the schema master operations role.	<input type="radio"/>	<input type="radio"/>
DC2 holds the PDC emulator master operations role.	<input type="radio"/>	<input type="radio"/>
Currently, you can add additional domains to the forest.	<input type="radio"/>	<input type="radio"/>

Answer:

Explanation:

Answer Area

Statements	Yes	No
DC2 holds the schema master operations role.	<input type="radio"/>	<input checked="" type="radio"/>
DC2 holds the PDC emulator master operations role.	<input checked="" type="radio"/>	<input type="radio"/>
Currently, you can add additional domains to the forest.	<input type="radio"/>	<input checked="" type="radio"/>

NEW QUESTION 223

You have a Hyper-V host named Server1 that runs Windows Server 2016. The host has two virtual machines (VMs) named VM1 and VM2. On the Hyper-V host, you create two virtual disks named Disk1 and Disk2. You plan to create a test environment for Storage Spaces Direct. You need to configure the VMs to connect to the virtual disks. What should you use?

- A. An iSCSI target
- B. A virtual SCSI controller
- C. A virtual fibre channel adapter
- D. A virtual IDE controller

Answer: B

Explanation: References:
<https://blogs.msdn.microsoft.com/clustering/2015/05/27/testing-storage-spaces-direct-using-windows-server-2016-virtual-machines/>

NEW QUESTION 227

You have a server named Server1 that runs Windows Server 2016. You need to configure Server1 as a Web Application Proxy. Which server role or role service should you install on Server1?

- A. Web Server (IIS)
- B. Network Policy and Access Services
- C. Direct Access and VPN (RAS)
- D. Active Directory Federation Services
- E. Remote Access

Answer: E

NEW QUESTION 230

Note: This question is part of a series of questions that present the same scenario. Each question in the series contains a unique solution that might meet the stated goals. Some question sets might have more than one correct solution, while others might not have a correct solution. After your answer a question in this section, you will NOT be able to return to it. As a result, these questions will not appear in the review screen. Your network contains an Active Directory forest named contoso.com. You need to identify which server is the schema master. Solution: From Windows PowerShell, you run Get-ADDomainController -Discover -Service 2. Does this meet the goal?

- A. Yes
- B. No

Answer: B

Explanation: References:

<https://blogs.technet.microsoft.com/mempson/2007/11/08/how-to-find-out-who-has-your-fsmo-roles/>

NEW QUESTION 231

You have two servers named Server1 and Server2. A firewall exists between Server1 and Server2. Both servers run Windows Server Update Services (WSUS). Server1 downloads updates from Microsoft update. Server2 must synchronize updates from Server1. Which port should to open on the firewall?

- A. 80
- B. 443
- C. 3389
- D. 8530

Answer: D

NEW QUESTION 234

DRAG DROP

You have a Hyper-V host named Server1 that runs Windows Server 2016.

The installation source files for Windows Server 2016 are located in D:\Source. You need to create a Nano Server image.

Which cmdlets should you run? To answer, drag the appropriate cmdlets to the correct targets. Each cmdlet may be used once, more than once, or not at all. You may need to drag the split bat between panes or scroll to view content.

Cmdlets

Add-WindowsImage

Import-Module

Install-Module

New-NanoServerImage

New-WindowsCustomImage

Answer Area

First cmdlet to run:

cmdlet

Second cmdlet to run:

cmdlet

Answer:

Explanation:

Step 1: Import Module

Import-Module .\NanoServerImageGenerator.psm1 Step 2: New New-NanoServerImage

Create Nano Server Image VHDX

New-NanoServerImage -MediaPath .\Files -BasePath .\Base -TargetPath .\Images\NanoVMGA.vhdx References: <https://technet.microsoft.com/en-us/windows-server-docs/get-started/deploy-nano-server>

NEW QUESTION 238

You have a server named Server1 that runs Windows Server 2016 and is configured as a domain controller.

You install the DNS Server server role on Server1.

You plan to store a DNS zone in a custom Active Directory partition. You need to create a new Active Directory partition for the zone. What should you use?

- A. Set-DnsServer
- B. Active Directory Sites and Services
- C. Dns.exe
- D. Dnscmd.exe

Answer: D

Explanation: [https://technet.microsoft.com/en-us/library/ee649181\(v=ws.10\).aspx](https://technet.microsoft.com/en-us/library/ee649181(v=ws.10).aspx)

NEW QUESTION 241

HOTSPOT

Your network contains an Active Directory domain named contoso.com. The domain contains two servers named Server1 and Server2 that run Windows Server 2016.
Server1 has Microsoft System Center 2016 Virtual Machine Manager (VMM) installed. Server2 has IP Address Management (IPAM) installed.
You create a domain user named User1.
You need to integrate IPAM and VMM. VMM must use the account of User1 to manage IPAM. The solution must use the principle of least privilege.
What should you do on each server? To answer, select the appropriate options in the answer area.

Answer Area

On Server1:

	▼
Create a Run as Account that uses User1	
Add User1 to the Fabric Administrator user role	
Add User1 to the Remote Management Users group	

On Server2:

	▼
Add User1 to IPAM Administrator Role	
Add User1 to IPAM ASM Administrator Role	
Add User1 to IPAM MSM Administrator Role	

Answer:

Explanation:

On Server1: Create a Run As Account that uses User1.

On Server2: Add User1 to IPAM ASM Administrator Role. [https://technet.microsoft.com/en-us/library/dn783349\(v=ws.11\).aspx](https://technet.microsoft.com/en-us/library/dn783349(v=ws.11).aspx) [https://technet.microsoft.com/en-us/library/jj878348\(v=ws.11\).aspx](https://technet.microsoft.com/en-us/library/jj878348(v=ws.11).aspx)

NEW QUESTION 242

You have two servers named Server1 and Server2 that run Windows Server 2016.

You plan to implement Storage Replica to replicate the contents of volumes on Server1 to Server2. You need to ensure that the replication traffic between the servers is limited to a maximum of 100 Mbps.

Which cmdlet should you run?

- A. Set-NetUDPSetting
- B. New-StorageQosPolicy
- C. Set-SmbBandwidthLimit
- D. Set-NetTCPSetting

Answer: C

NEW QUESTION 247

A company named Contoso, Ltd has five Hyper-V hosts that are configured as shown In the following table.

Hyper-V host name	Configuration
Server1	Windows Sever 2012 R2 and an Intel Xeon E7 processor
Server2	Windows Sever 2012 R2 and an Intel i7 processor
Server3	Windows Sever 2016 and an Intel i7 processor
Server4	Windows Sever 2016 and an AMD Opteron processor
Server5	Windows Sever 2012 R2 and an Intel Xeon E7 processor

What are two valid live migration scenarios for virtual machines in your environment? Each correct answer presents a complete solution.

- A. from Server4 to Server5
- B. from Server1 to Server5
- C. from Server3 to Server4
- D. from Server2 to Server3

Answer: BD

NEW QUESTION 249

You have a Hyper-V host named Server1 that runs Windows Server 2016. Server1 hosts a virtual machine named VM1. VM1 is in a workgroup. VM1 is currently in a running state.

You need to create 10 copies of VM1 on Server1 in the least amount of time possible. Which cmdlets should you use?

- A. Stop-VM, and then Import-VM
- B. Export-VM, and then Import-VM
- C. Checkpoint-VM, and then New-VM

D. Copy-VMFile, and then New-VM

Answer: B

NEW QUESTION 253

You deploy two servers that run Windows Server 2016. You install the Failover Clustering feature on both servers. You need to create a workgroup cluster. What should you do?

- A. Configure both of the server to be in a workgroup named Workgrou
- B. Configure the Cluster Service to log on as Network Servic
- C. Run the New-Cluster cmdlet and specify an administrative access point of None.
- D. Create matching local administrative accounts on both of the server
- E. Assign the same primary DNS suffix to both of the server
- F. Run the New-Cluster cmdlet and specify an administrative access point of DNS.
- G. Configure both of the server to be in a workgroup named Workgrou
- H. Configure the Cluster Service to log on as Network Servic
- I. Run the New-Cluster cmdlet and specify an administrative access point of DNS.
- J. Create matching local administrative accounts on both of the server
- K. Assign the same primary DNS suffix to both of the server
- L. Run the New-Cluster cmdlet and specify an administrative access point of None

Answer: B

Explanation: References:

<https://rlevchenko.com/2015/09/07/workgroup-and-multi-domain-clusters-in-windows-server-2016/>

NEW QUESTION 255

Note: This question is part of a series of questions that use the same scenario. For your convenience, the scenario is repeated in each question. Each question presents a different goal and answer choices, but the text of the scenario is exactly the same in each question in this series.

Start of repeated scenario

Your network contains an Active Directory domain named contoso.com. The functional level of the forest and the domain is Windows Server 2008 R2. All servers in the domain run Windows Server 2016 Standard. The domain contains 300 client computers that run either Windows 8.1 or Windows 10.

The domain contains nine servers that are configured as shown in the following table.

Server name	Configuration	Planned changes
Server1	Domain controller	None
Server2	File server	Run Failover Clustering and Storage Spaces Direct
Server3	File server	Run Failover Clustering and Storage Spaces Direct
Server4	Hyper-V host	Run shielded virtual machines
Server5	Hyper-V host	None
Server6	Member server	Run Active Directory Federation Services (AD FS)
VM1	Virtual machine hosted on Server 5	None
VM2	Virtual machine hosted on Server 5	None
VM3	Virtual machine hosted on Server 5	None

The virtual machines are configured as follows:

Each virtual machine has one virtual network adapter.

VM1 and VM2 are part of a Network Load Balancing (NLB) cluster.

All of the servers on the network can communicate with all of the virtual machines. End of repeated scenario.

You plan to implement nested virtual machines on VM1.

Which two features will you be prevented from using for VM1?

- A. NUMA spanning
- B. live migration
- C. Dynamic Memory
- D. Smart Pathing

Answer: BC

Explanation: References:

<https://blogs.technet.microsoft.com/virtualization/2015/10/13/windows-insider-preview-nested-virtualization/>

NEW QUESTION 259

Note: This question is part of a series of questions that use the same scenario. For your convenience, the scenario is repeated in each question. Each question presents a different goal and answer choices, but the text of the scenario is exactly the same in each question in this series.

Start of repeated scenario

Your network contains an Active Directory domain named contoso.com. The functional level of the forest and the domain is Windows Server 2008 R2. All servers in the domain run Windows Server 2016 Standard. The domain contains 300 client computers that run either Windows 8.1 or Windows 10. The domain contains nine servers that are configured as shown in the following table.

Server name	Configuration	Planned changes
Server1	Domain controller	None
Server2	File server	Run Failover Clustering and Storage Spaces Direct
Server3	File server	Run Failover Clustering and Storage Spaces Direct
Server4	Hyper-V host	Run shielded virtual machines
Server5	Hyper-V host	None
Server6	Member server	Run Active Directory Federation Services (AD FS)
VM1	Virtual machine hosted on Server 5	None
VM2	Virtual machine hosted on Server 5	None
VM3	Virtual machine hosted on Server 5	None

The virtual machines are configured as follows:

- Each virtual machine has one virtual network adapter.
- VM1 and VM2 are part of a Network Load Balancing (NLB) cluster.
- All of the servers on the network can communicate with all of the virtual machines. End of repeated scenario.

You create a new NLB cluster that contains VM3.

You need to ensure that VM2 can remain in the original cluster and be added to the new cluster. What should you do first?

- A. Add a new virtual network adapter to VM2.
- B. Install the Web Application Proxy server role on VM2 and VM3.
- C. Modify the default port rule.
- D. Change the cluster operation mode.

Answer: A

NEW QUESTION 261

HOTSPOT

You have four Hyper-V hosts named Server1, Server2, Server3 and Server4 that run Windows Server 2016. The hosts are nodes in a failover cluster.

The failover cluster is configured to balance virtual machines when a node is more than 80 percent loaded.

You need to configure the failover cluster to balance the virtual machines when the load of a node is more than five percent higher than the average for the nodes.

Which command should you run? To answer, select the appropriate options in the answer area.

Answer Area

▼

Get-Cluster
Get-ClusterNode
Get-ClusterParameter
Get-ClusterResource

▼

AutoBalanceLevel=3
AutoBalancedMode=1
DynamicQuorum=1
MininumPreemptorPriority=5

Answer:

Explanation:

Answer Area

	▼
Get-Cluster	
Get-ClusterNode	
Get-ClusterParameter	
Get-ClusterResource	

	▼
AutoBalanceLevel=3	
AutoBalancedMode=1	
DynamicQuorum=1	
MininumPreemptorPriority=5	

NEW QUESTION 262

You have just finished installing Windows Server 2016 on a new server.

Your colleague has informed you that its essential that you must activate Windows Server. Which of the following command line tools can be used to Activate Windows Server?

- A. Netdom C:\windows\system32\slmgr.vbs -ato
- B. Netsh C:\windows\system32\slmgr.vbs -ato
- C. Ocsetup C:\windows\system32\slmgr.vbs -ato
- D. Cscript C:\windows\system32\slmgr.vbs -ato

Answer: D

Explanation: The correct answer is Cscript C:\windows\system32\slmgr.vbs -ato

NEW QUESTION 264

With Nano Server some packages are installed directly with their own Windows PowerShell switches (such as -Compute); others you install by passing package names to the -Packages parameter, which you can combine in a comma-separated list.

You want to add IIS to your Nano Server, which command should you use?

- A. -Compute
- B. -Packages
- C. -Containers
- D. -Storage

Answer: B

Explanation: IIS is added by using -Packages Microsoft-NanoServer-IIS-Package.

NEW QUESTION 269

You have decided to install Windows Server 2016 by choosing the Service Core Installation option. If you want to install, configure or uninstall server roles remotely, what tool would you use?

- A. Any of these
- B. Windows PowerShell
- C. Remote Server Administration Tools (RSAT)
- D. Server Manager

Answer: A

NEW QUESTION 273

When you create a new SET team, you must configure the following team properties: Member adapters and Load balancing mode.

Which Load balancing mode ensures that outbound loads are distributed based on a hash of the TCP Ports and IP addresses.

This mode also re-balances loads in real time so that a given outbound flow can move back and forth between SET team members.

- A. Dynamic
- B. Hyper-V Port

Answer: A

NEW QUESTION 274

You plan to install a Nano Server on a physical server named Nano1. Nano1 will host several virtual machines that will use live migration.

Which package should you install on Nano1?

- A. Microsoft-NanoServer-SecureStartup-Package
- B. Microsoft-NanoServer-ShieldedVM-Package
- C. Microsoft-NanoServer-Compute-Package

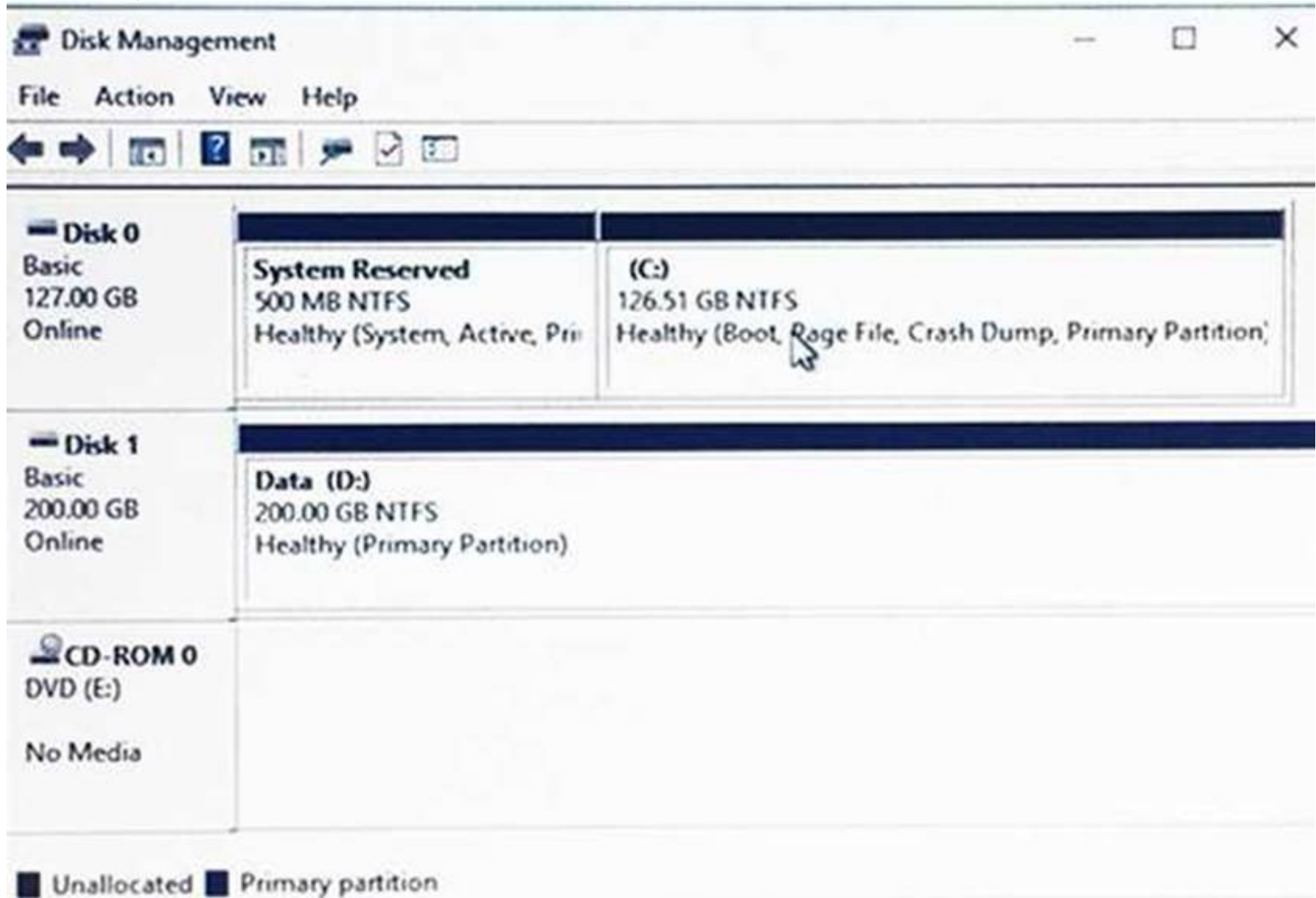
- D. Microsoft-NanoServer-FailoverCluster-Package
E. Microsoft-NanoServer-Storage –Package

Answer: C

NEW QUESTION 278

DRAG DROP

You have a Hyper-V host named Server1 that runs Windows Server 2016. Server1 hosts a virtual machine named VM1. VM1 runs Windows Server 2016. VM1 uses a VHD for storage.
The disk configuration of VM1 is shown in the exhibit. (Click the Exhibit button.)



You need to increase the size of volume D to 400 GB.
Which cmdlets should you run on Server1 and VM1? To answer, drag the appropriate cmdlets to the correct servers. Each cmdlet may be used once, more than once, or not at all. You may need to drag the split bar between panes or scroll to view content.
NOTE: Each correct selection is worth one point.

Cmdlets	Answer Area
Resize-Partition	Cmdlet to run on Server1: <div>Cmdlet</div>
Resize-VHD	Cmdlet to run on VM1: <div>Cmdlet</div>
Resize-VirtualDisk	
Set-VHD	
Set-Volume	

Answer:

Explanation:

Cmdlets	Answer Area
Resize-Partition	Cmdlet to run on Server1: <input type="text" value="Resize-VHD"/>
Resize-VHD	Cmdlet to run on VM1: <input type="text" value="Resize-Partition"/>
Resize-VirtualDisk	
Set-VHD	
Set-Volume	

NEW QUESTION 283

You have two servers that run Windows Server 2016. The servers are configured as shown in the following table.

Server name	Workgroup	DNS suffix
Server1	Workgroup1	None
Server2	Workgroup2	Contoso.com

You need to create a failover cluster that contains both servers.

Which two commands should you run? Each correct answer presents part of the solution. NOTE: Each correct selection is worth one point.

- A. wmic ComputerSystem Set Workgroup= "Workgroup2"
- B. New-Cluster-Name Cluster1- Node Server1, Server2- AdministrativeAccessPoint DNS
- C. New-Cluster-Name Cluster1- Node Server1, Server2- AdministrativeAccessPoint ActiveDirectoryAndDns
- D. New-Cluster-Name Cluster1- Node Server1, Server2- AdministrativeAccessPoint None
- E. netdom computername Server1/MakePrimary:server1.contoso.com

Answer: AB

NEW QUESTION 285

HOTSPOT

You have four servers named Server1, Server2, Server3, and Server4 that run Windows Server 2016. Server1 and Server2 are nodes in a failover cluster named FC1. Server3 and Server4 are nodes in a failover cluster named FC2.

You add the cluster roles shown in the following table.

Role name	Type	Failover cluster	Owner node
FS1(\FS1)	File server	FC1	Server1
FS2(\FS2)	Scale-Out File Server	FC2	Server3

You add a file share named Share1 to FS1. You add a file share named Share2 to FS2.

Which UNC paths can you use to access each share? To answer, select the appropriate options in the answer area.

NOTE: Each correct selection is worth one point.

Answer Area

UNC path to access Share1:

\\FS1\Share1 only \\Server1\Share1 only \\Server2\Share1 only \\Server1\Share1 and \\Server2\Share1 only \\Server1\Share1, \\Server2\Share1. and \\FS1\Share1	▼
---	---

UNC path to access Share2:

\\FS2\Share2 only \\Server3\Share2 only \\Server4\Share2 only \\Server3\Share2 and \\Server4\Share2 only \\Server1\Share2, \\Server4\Share2. and \\FS2\Share2	▼
---	---

Answer:

Explanation:

References:

<https://blogs.technet.microsoft.com/canitpro/2013/12/10/step-by-step-scale-out-file-shares-and-continuously-available-file-services/>

<https://robertsmit.wordpress.com/2018/02/21/clustering-fileserver-data-deduplication-on-windows-2016-step-by-step-sofs-winserv-refs-windowsserver2016-dedupe/>

NEW QUESTION 287

You have a server named Server1 that runs Windows Server 2016. Server1 has the Containers feature installed.

You create a text file that contains the commands that will be used to automate the creation of new containers.

You need to ensure that the commands in the text file are used when you create new containers. What should you name the file?

- A. Bootstrap.ini
- B. Config.ini
- C. Dockerfile
- D. Unattend.txt

Answer: C

NEW QUESTION 291

You have a container host named Server1 that runs Windows Server 2016.

You need to start a Hyper-V container on Server1.

Which parameter should you use with the docker run command?

- A. --runtime
- B. --entrypoint
- C. --privileged
- D. --isolation
- E. --expose

Answer: D

Explanation:

<https://docs.microsoft.com/en-us/virtualization/windowscontainers/deploy-containers/system-requirements>

NEW QUESTION 296

You have Hyper-V virtual machines that run 50 web servers, 10 Microsoft SQL Server servers. 10 file servers, and eight domain controllers.

You need to implement a backup strategy that meets the following requirements:

*Backs up all servers

*Centralizes backup management

*Performs application-level backups

*Provides the ability to perform bare metal recovery What should you use?

- A. Microsoft Azure VM Backup
- B. Microsoft Azure Backup Agent
- C. Windows Server Backup
- D. Microsoft Azure Backup Server

Answer: D

NEW QUESTION 297

You have a Hyper-V failover cluster that contains three nodes. Virtual machines are distributed evenly across the cluster nodes.

You need to ensure that if a node loses connectivity from the other nodes, the virtual machines on the node will be transitioned to one of the remaining nodes after one minute.

Which settings should you modify?

- A. QuarantineDuration and QuarantineThreshold
- B. SameSubnetDelay and CrossSubnetDelay
- C. QuorumArbitrationTimeMax and RequestReplyTimeout
- D. ResiliencyPeriod and ResiliencyLevel

Answer: C

Explanation:

References: [https://msdn.microsoft.com/en-us/library/aa369123\(v=vs.85\).aspx](https://msdn.microsoft.com/en-us/library/aa369123(v=vs.85).aspx) [https://msdn.microsoft.com/en-us/library/bb394696\(v=vs.85\).aspx](https://msdn.microsoft.com/en-us/library/bb394696(v=vs.85).aspx)

NEW QUESTION 298

You have a Hyper-V host that runs Windows Server 2016.

You need to identify the amount of processor resources consumed by Hyper-V and virtual machines. Which counter should you use from Performance Monitor?

- A. \Hyper-V Hypervisor\Logical Processor
- B. \Hyper-V Hypervisor Root Virtual Processor(_Total)\% Guest Run Time
- C. \Hyper-V Hypervisor Virtual Processor(_Total)\% Hypervisor Run Time
- D. \Hyper-V Hypervisor Virtual Processor(_Total)\% Total Run Time
- E. \Hyper-V Hypervisor Logical Processor(_Total)\% Total Run Time

Answer: A

Explanation:

References: [https://msdn.microsoft.com/en-us/library/cc768535\(v=bts.10\).aspx](https://msdn.microsoft.com/en-us/library/cc768535(v=bts.10).aspx)

NEW QUESTION 302

You have a server named Server1 that runs Windows Server 2016.

On Server1, you use the Basic template to create a new Data Collector Set named CollectorSet1. You need to configure CollectorSet1 to generate performance alerts.

What should you do before you start CollectorSet1?

- A. Modify the performance counter data collector of CollectorSet1.
- B. Add a new data collector to CollectorSet1.
- C. Modify the configuration data collector of CollectorSet1.
- D. Add a new task to CollectorSet1.

Answer: A

Explanation:

[https://technet.microsoft.com/en-us/library/cc722414\(v=ws.11\).aspx](https://technet.microsoft.com/en-us/library/cc722414(v=ws.11).aspx)

NEW QUESTION 306

You have a Hyper-V host named Server1 that runs Windows Server 2016. Server1 hosts a virtual

machine named VM1 that runs Windows Server 2016. You install the Hyper-V server role on VM1.

You need to ensure that the virtual machines hosted on VM1 can communicate with the virtual machines hosted on Server1.

What should you do?

- A. On Server1, run the Set-VmNetworkAdapterIsolation cmdlet and specify the –MultiTenantStack Off parameter.
- B. On VM1, run the Set-VMNetworkAdapter cmdlet and specify the –MacAddressSpoofing Off parameter.
- C. On VM1, run the Set-VmNetworkAdapterIsolation cmdlet and specify the –MultiTenantStack On parameter.
- D. On Server1, run the Set-VMNetworkAdapter cmdlet and specify the –MacAddressSpoofing On parameter.

Answer: C

Explanation: References: <https://docs.microsoft.com/en-us/powershell/module/hyper-v/set-vmnetworkadapterisolation?view=win10-ps>

NEW QUESTION 310

Note: This question is part of a series of questions that present the same scenario. Each question in the series contains a unique solution that might meet the stated goals. Some question sets might

have more than one correct solution, while others might not have a correct solution. Your network contains an Active Directory forest

You install Windows Server 2016 on 10 virtual machines.

You need to deploy the Web Server (IIS) server role identically to the virtual machines.

Solution: From Windows System Image Manager, you create an answer file, you copy the file to C:\Sysprep on each virtual machine, and then you run the Apply-Image cmdlet.

Does this meet the goal?

- A. Yes
- B. No

Answer: B

NEW QUESTION 315

You have two Hyper-V hosts named Server1 and Server2 that run Windows Server 2016. Server1 hosts a virtual machine named VM1 that is in a Running state. On Server1, you export VM1 and then you import VM1 on Server2. What is the current state of VM1 on Server2?

- A. Off
- B. Running
- C. Paused
- D. Saved

Answer: B

NEW QUESTION 319

You have a Windows Server 2016 failover cluster named Cluster1 that contains three nodes named Server1, Server2, and Server3. Each node hosts several virtual machines. The virtual machines are configured to fail over to another node in Cluster1 if the hosting node fails. You need to ensure that if the Cluster service fails on one of the nodes, the virtual machine of that node will fail over immediately. Which setting should you configure?

- A. FailureConditionLevel
- B. QuarantineDuration
- C. ResiliencyPeriod
- D. ResiliencyLevel

Answer: D

Explanation: References:

<https://blogs.msdn.microsoft.com/clustering/2015/06/03/virtual-machine-compute-resiliency-in-windows-server-2016/>

NEW QUESTION 323

HOTSPOT

You have a Windows Server 2016 failover cluster that has a cluster network named ClusterNetwork1. You need to ensure that ClusterNetwork1 is enabled for cluster communication only.

What command should you run? To answer, select the appropriate options in the answer area.

Answer Area

(<div><div>▼</div><div>Get-ClusterNetwork Get-ClusterResource Set-ClusterParameter Update-ClusterIPResource</div></div>	ClusterNetwork1).	<div><div>▼</div><div>ID Metric Role State</div></div>	=1
---	--	-------------------	--	----

Answer:

Explanation:

Answer Area

(<div><div>▼</div><div>Get-ClusterNetwork Get-ClusterResource Set-ClusterParameter Update-ClusterIPResource</div></div>	ClusterNetwork1).	<div><div>▼</div><div>ID Metric Role State</div></div>	=1
---	--	-------------------	--	----

NEW QUESTION 324

HOTSPOT

You are deploying Network Load Balancing (NLB) to three web servers named Server1, Server2, and Server3. The web servers have the following IP addresses:

Server1: 192.168.2.101

Server2: 192.168.2.102 Server3:192.168.2.103

The IP address used by NLB is 192.168.2.120.

Which IP address or addresses will be configured on each server? To answer, select the appropriate options in the answer area.

Answer Area

Server1:

	▼
192.168.2.101 only	
192.168.2.120 only	
192.168.2.101 and 192.168.2.120 only	
192.168.2.101, 192.168.2.102, and 192.168.2.103 only	
192.168.2.101, 192.168.2.102, 192.168.2.103 and 192.168.2.120	

Server2:

	▼
192.168.2.102 only	
192.168.2.120 only	
192.168.2.102 and 192.168.2.120 only	
192.168.2.101, 192.168.2.102, and 192.168.2.103 only	
192.168.2.101, 192.168.2.102, 192.168.2.103 and 192.168.2.120	

Server3:

	▼
192.168.2.103 only	
192.168.2.120 only	
192.168.2.103 and 192.168.2.120 only	
192.168.2.101, 192.168.2.102, and 192.168.2.103 only	
192.168.2.101, 192.168.2.102, 192.168.2.103 and 192.168.2.120	

Answer:

Explanation:

Answer Area

Server1:

	▼
192.168.2.101 only	
192.168.2.120 only	
192.168.2.101 and 192.168.2.120 only	
192.168.2.101, 192.168.2.102, and 192.168.2.103 only	
192.168.2.101, 192.168.2.102, 192.168.2.103 and 192.168.2.120	

Server2:

	▼
192.168.2.102 only	
192.168.2.120 only	
192.168.2.102 and 192.168.2.120 only	
192.168.2.101, 192.168.2.102, and 192.168.2.103 only	
192.168.2.101, 192.168.2.102, 192.168.2.103 and 192.168.2.120	

Server3:

	▼
192.168.2.103 only	
192.168.2.120 only	
192.168.2.103 and 192.168.2.120 only	
192.168.2.101, 192.168.2.102, and 192.168.2.103 only	
192.168.2.101, 192.168.2.102, 192.168.2.103 and 192.168.2.120	

NEW QUESTION 326

You have two servers named Server1 and Server2 that run Windows Server 2016. Server1 contains a volume named Volume1. You implement a Storage Replica that replicates the contents of Volume1 from Server1 to Server2. Server1 fails. From Server2, you need to ensure that you can access the contents of Volume1. What should you run?

- A. Update-StoragePool
- B. Set-SRPartnership
- C. vssadmin revert shadow
- D. Clear-FileStorageTier

Answer: B

Explanation: References:

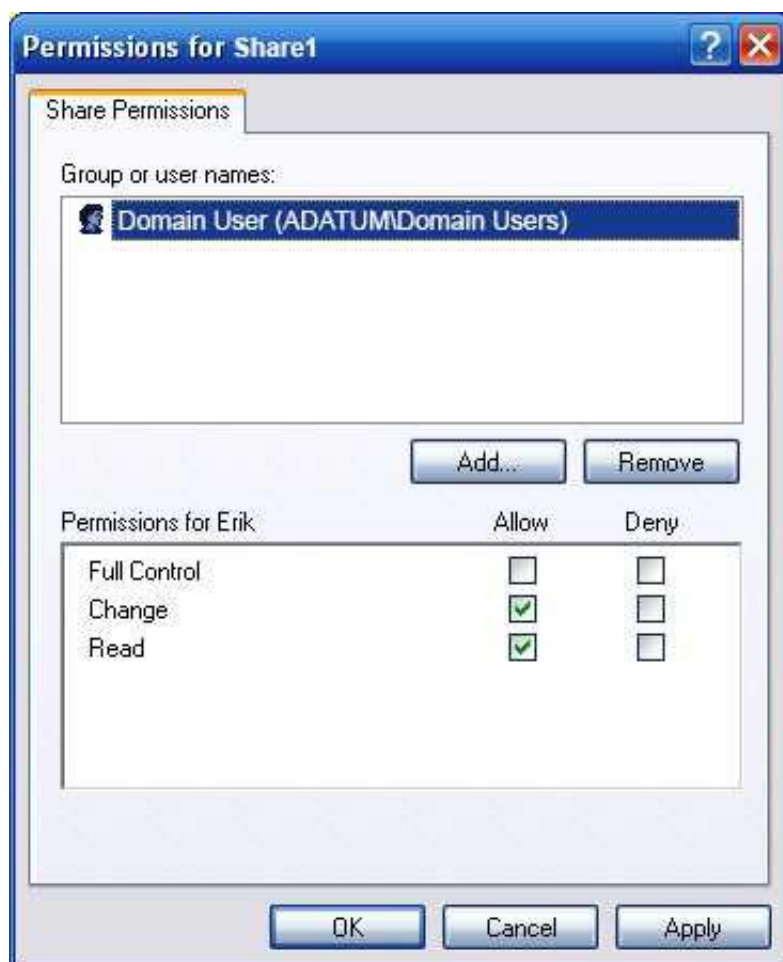
<https://docs.microsoft.com/en-us/windows-server/storage/storage-replica/server-to-server-storage-replication>

NEW QUESTION 330**HOTSPOT**

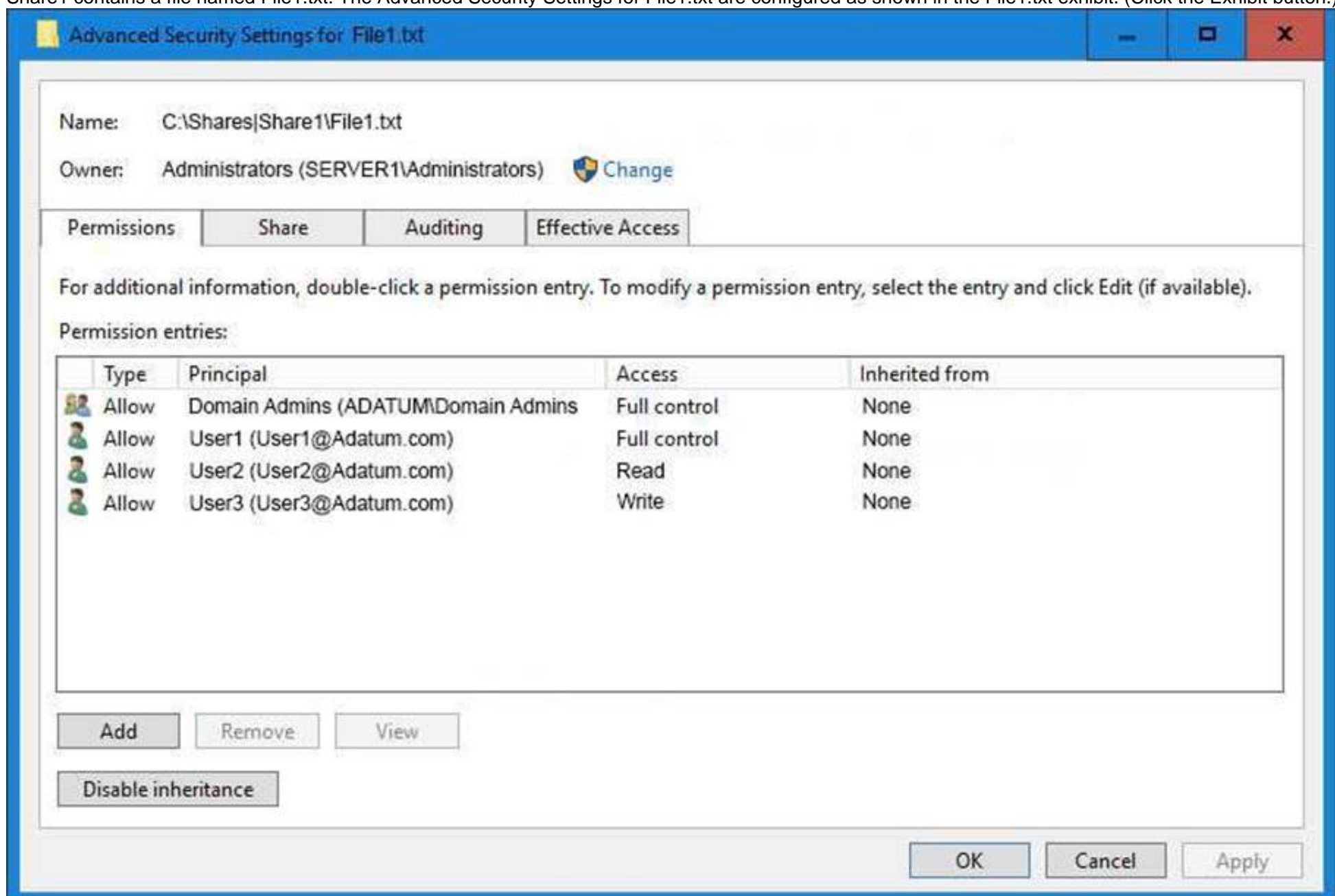
Your network contains an Active Directory domain named Adatum.com. The domain contains two servers named Server1 and Server2 that run Windows Server 2016. The domain contains three users named User1, User2, and User3. Server1 has a share named Share1 that has the following configurations.

```
PresetPathAcl      : System.Security.AccessControl.DirectorySecurity
ShareState         : Online
AvailabilityType   : NonClustered
ShareType          : FileSystemDirectory
FolderEnumerationMode : AccessBased
CachingMode        : Manual
SmbInstance        : Default
CATimeout          : 0
ConcurrentUserLimit : 0
ContinuouslyAvailable : False
CurrentUsers       : 0
Description        :
EncryptData        : False
Name               : Share1
Path               : C:\Shares\Share1
Scoped             : False
ScopeName          : *
SecurityDescriptor : O:BAG:DUD:(A;OICI;FA;;;WD)
ShadowCopy         : False
Special            : False
Temporary          : False
Volume             : \\?\Volume{d80578cf-0000-0000-0000-501f00000000}\
PSComputerName     :
CimClass           : ROOT/Microsoft/Windows/SMB:MSFT_SmsShare
CimInstanceProperties : {AvailabilityType, CachingMode, CATimeout, ConcurrentUserLimit...}
CimSystemProperties : Microsoft.Management.Infrastructure.CimSystemProperties
```

The share permissions for Share1 are configured as shown in the Share1 exhibit. (Click the Exhibit button.)



Share1 contains a file named File1.txt. The Advanced Security Settings for File1.txt are configured as shown in the File1.txt exhibit. (Click the Exhibit button.)



For each of the following statement, select Yes if the statement is true. Otherwise, select No.

Answer Area

Statement	Yes	No
When User1 navigates to \\Server1\Share1\, the user can take ownership of File1.txt.	<input type="radio"/>	<input type="radio"/>
When User2 navigates to \\Server1\Share1\, the user will see File1.txt	<input type="radio"/>	<input type="radio"/>
When User3 navigates to \\Server1\Share1\, the user will see File1.txt	<input type="radio"/>	<input type="radio"/>

Answer:

Explanation:

Answer Area

Statement	Yes	No
When User1 navigates to \\Server1\Share1\, the user can take ownership of File1.txt.	<input type="radio"/>	<input checked="" type="radio"/>
When User2 navigates to \\Server1\Share1\, the user will see File1.txt	<input checked="" type="radio"/>	<input type="radio"/>
When User3 navigates to \\Server1\Share1\, the user will see File1.txt	<input checked="" type="radio"/>	<input type="radio"/>

NEW QUESTION 333

You have a Windows container host named Server1.
On Server1, you create a container named Container1.
You need to mount C:\ContainerFiles from Server1 to Container1. What should you run?

- A. dockerd --storage-opt dm.mountopt=ContainerFiles
- B. docker run -it -v c:\ContainerFiles Container1
- C. dockerd --storage-opt dm.datadev=/c/ContainerFiles
- D. docker run -it -vc:\ContainerFiles:c:\ContainerFiles Container1

Answer: D

NEW QUESTION 335

HOTSPOT

Note: This question is part of a series of questions that use the same scenario. For your convenience, the scenario is repeated in each question. Each question presents a different goal and answer choices, but the text of the scenario is exactly the same in each question in this series.
Your network contains an Active Directory domain named contoso.com. The functional level of the forest and the domain is Windows Server 2008 R2. All servers in the domain run Windows Server 2016 Standard. The domain contains 300 client computers that run either Windows 8.1 or Windows 10.
The domain contains nine servers that are configured as shown in the following table.

Name	Configuration	Planned changes
Server1	Domain controller	<i>None</i>
Server2	File server	Run Failover Clustering and Storage Spaces Direct
Server3	File server	Run Failover Clustering and Storage Spaces Direct
Server4	Hyper-V host	Run shielded virtual machines
Server5	Hyper-V host	<i>None</i>
Server6	Member server	Run Active Directory Federation Services (AD FS)
VM1	Virtual machine hosted on Server5	<i>None</i>
VM2	Virtual machine hosted on Server5	<i>None</i>
VM3	Virtual machine hosted on Server5	<i>None</i>

The virtual machines are configured as follows:

Each virtual machine has one virtual network adapter.

VM1 and VM2 are part of a Network Load Balancing (NLB) cluster.

All of the servers on the network can communicate with all of the virtual machines. For VM1 and VM2, you plan to use live migration between Server4 and Server5.

You need to ensure that when the virtual machines migrate, they maintain connectivity to the network.

Which virtual switch names and connection types should you use on each server? To answer, select the appropriate options in the answer area.

Answer Area

Virtual switch connection type on Server4:

▼

External network

Internal network

Private network

Virtual switch connection type on Server5:

▼

External network

Internal network

Private network

Virtual switch name on Server4:

▼

External on Server4

Network switch

Server4

Virtual switch name on Server5:

▼

External on Server5

Network switch

Server5

Answer:

Explanation:

Answer Area

Virtual switch connection type on Server4:

▼

External network

Internal network

Private network

Virtual switch connection type on Server5:

▼

External network

Internal network

Private network

Virtual switch name on Server4:

▼

External on Server4

Network switch

Server4

Virtual switch name on Server5:

▼

External on Server5

Network switch

Server5

NEW QUESTION 338

Note: This question is part of a series of questions that present the same scenario. Each question in the series contains a unique solution that might meet the stated goals. Some question sets might have more than one correct solution, while others might not have a correct solution.

After you answer a question in this section, you will NOT be able to return to it. As a result, these questions will not appear in the review screen.

You network contains an Active Directory domain named contoso.com.

You need to create a Nano Server image named Nano1 that will be used as a virtualization host. The Windows Server 2016 source files are located in drive D.

Solution: You run the following cmdlet.

```
New-NanoServerImage -Edition Datacenter -DeploymentType Host -Compute
-MediaPath 'D:\' -TargetPath C:\Nano1\Nano1.wim -ComputerName Nano1
-DomainName Contoso.com
```

Does this meet the goal?

- A. Yes
- B. No

Answer: A

NEW QUESTION 342

Note: This question is part of a series of questions that present the same scenario. Each question in the series contains a unique solution that might meet the stated goals. Some question sets might have more than one correct solution, while others might not have a correct solution.

After you answer a question in this section, you will NOT be able to return to it. As a result, these questions will not appear in the review screen.

You network contains an Active Directory domain named contoso.com.

You need to create a Nano Server image named Nano1 that will be used as a virtualization host. The Windows Server 2016 source files are located in drive D.

Solution: You run the following cmdlet.

```
New-NanoServerImage -Edition Datacenter -DeploymentType Host -Package
Microsoft-NanoServer-SCVMM-Package -MediaPath 'D:\' -TargetPath
C:\Nano1\Nano1.wim -ComputerName Nano1 -DomainName Contoso.com
```

Does this meet the goal?

- A. Yes
- B. No

Answer: B

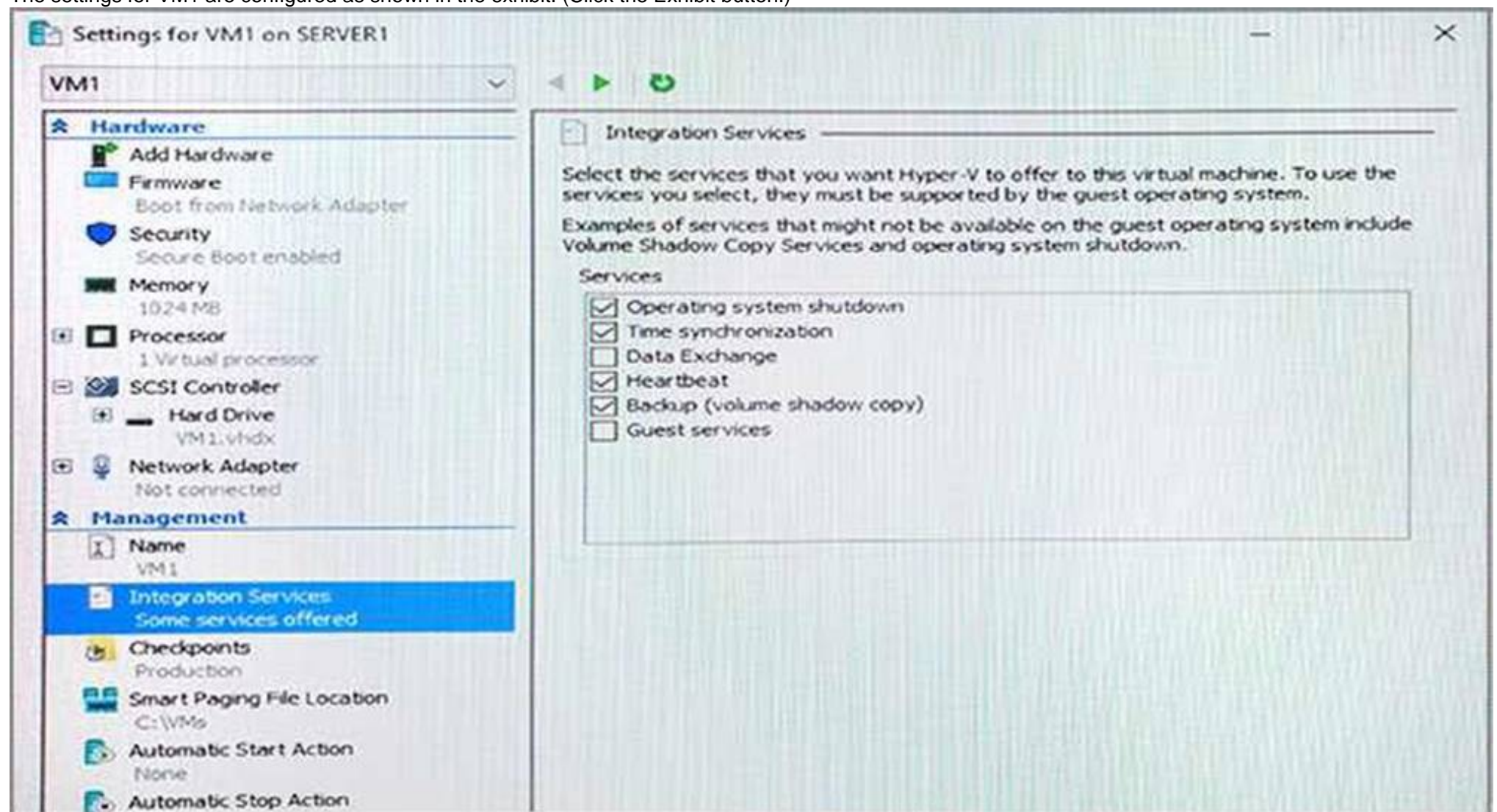
NEW QUESTION 347

Note: This question is part of a series of questions that present the same scenario. Each question in the series contains a unique solution that might meet the stated goals. Some question sets might have more than one correct solution, while others might not have a correct solution.

After you answer a question in this section, you will NOT be able to return to it. As a result, these questions will not appear in the review screen.

You have a Hyper-V host named Server1 that hosts a virtual machine named VM1. Server1 and VM1 run Windows Server 2016.

The settings for VM1 are configured as shown in the exhibit. (Click the Exhibit button.)



You need to ensure that you can use the Copy-VMFile cmdlet on Server1 to copy files from VM1. Solution: You enable the Data Exchange integration service for VM1.

Does this meet the goal?

- A. Yes
- B. No

Answer: B

Explanation: References:

[https://technet.microsoft.com/en-us/library/dn798297\(v=ws.11\).aspx](https://technet.microsoft.com/en-us/library/dn798297(v=ws.11).aspx)

NEW QUESTION 352

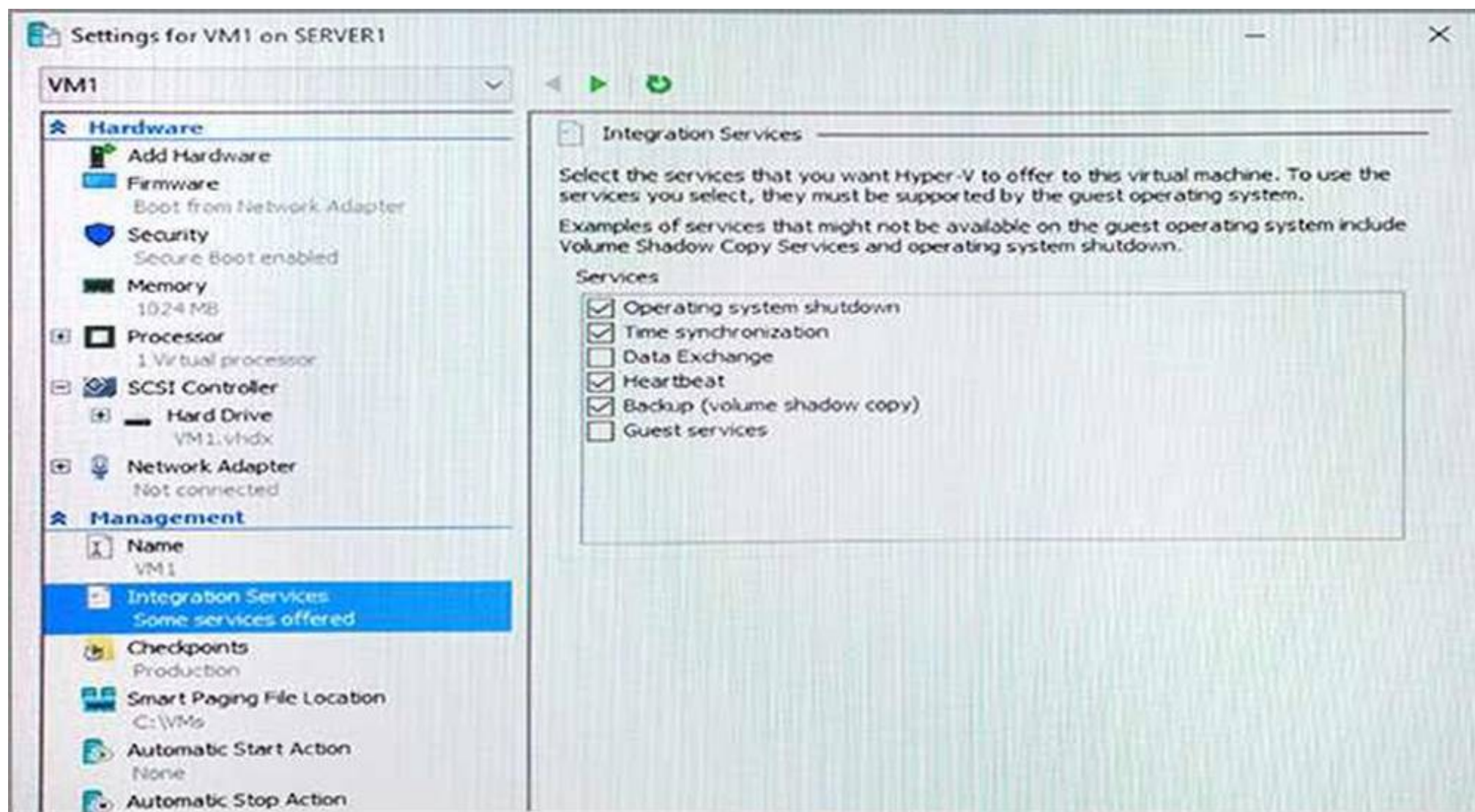
Note: This question is part of a series of questions that present the same scenario. Each question in the series contains a unique solution that might meet the stated goals. Some question sets might

have more than one correct solution, while others might not have a correct solution.

After you answer a question in this section, you will NOT be able to return to it. As a result, these questions will not appear in the review screen.

You have a Hyper-V host named Server1 that hosts a virtual machine named VM1. Server1 and VM1 run Windows Server 2016.

The settings for VM1 are configured as shown in the exhibit. (Click the Exhibit button.)



You need to ensure that you can use the Copy-VMFile cmdlet on Server1 to copy files from VM1. Solution: You connect VM1 to an internal virtual switch. Does this meet the goal?

- A. Yes
- B. No

Answer: B

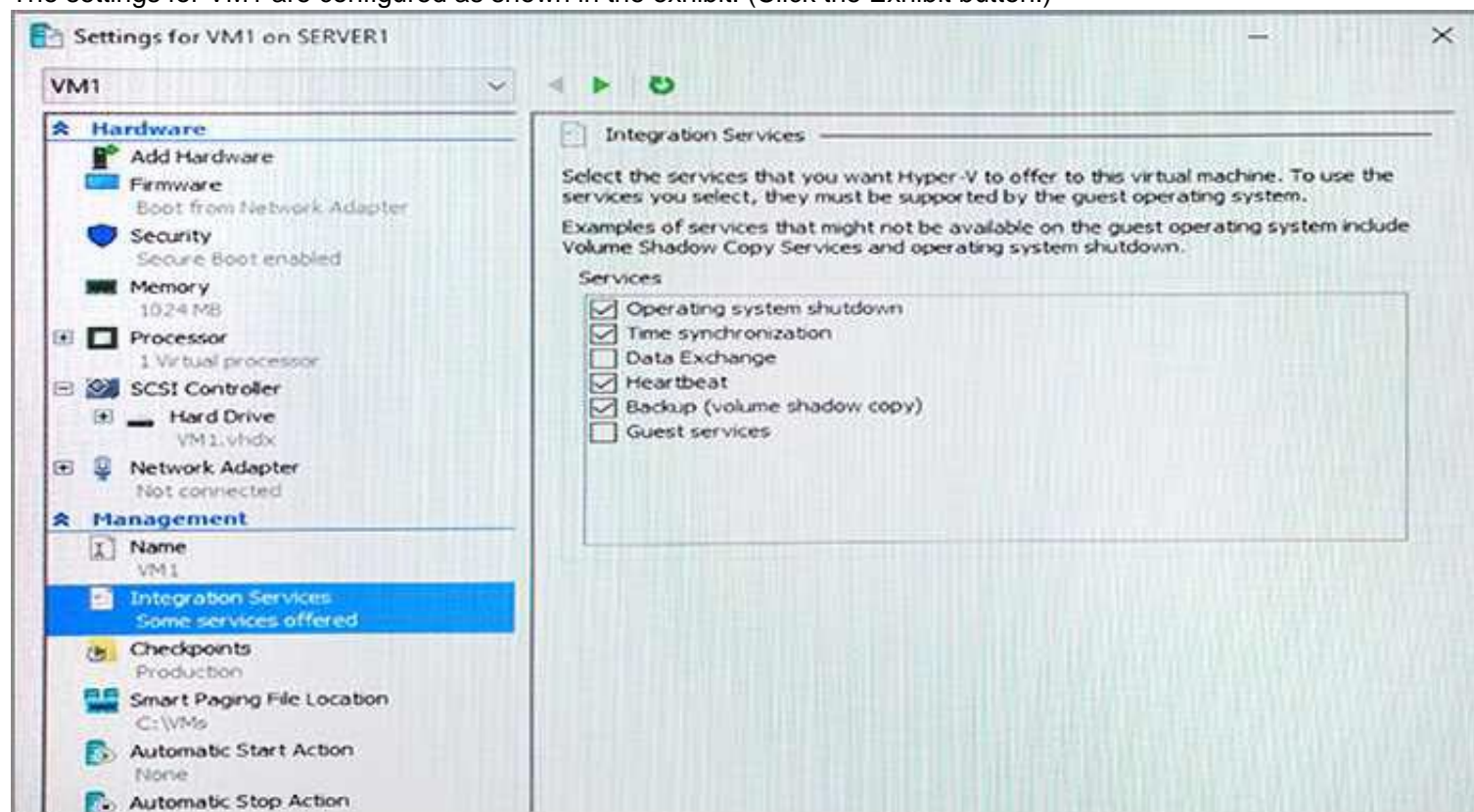
NEW QUESTION 356

Note: This question is part of a series of questions that present the same scenario. Each question in the series contains a unique solution that might meet the stated goals. Some question sets might have more than one correct solution, while others might not have a correct solution.

After you answer a question in this section, you will NOT be able to return to it. As a result, these questions will not appear in the review screen.

You have a Hyper-V host named Server1 that hosts a virtual machine named VM1. Server1 and VM1 run Windows Server 2016.

The settings for VM1 are configured as shown in the exhibit. (Click the Exhibit button.)



You need to ensure that you can use the Copy-VMFile cmdlet on Server1 to copy files from VM1.

Solution: You start the Hyper-V Guest Service Interface service on VM1. Does this meet the goal?

- A. Yes
- B. No

Answer: A

Explanation: References:

[https://technet.microsoft.com/en-us/library/dn798297\(v=ws.11\).aspx](https://technet.microsoft.com/en-us/library/dn798297(v=ws.11).aspx)

NEW QUESTION 357

Note: This question is part of a series of questions that present the same scenario. Each question in the series contains a unique solution that might meet the stated goals. Some question sets might have more than one correct solution, while others might not have a correct solution.

After you answer a question in this section, you will NOT be able to return to it. As a result, these questions will not appear in the review screen.

You have a server named Server1 that runs Windows Server 2016.

Server1 hosts a line-of-business application named App1. App1 has a memory leak that occasionally causes the application to consume an excessive amount of memory.

You need to log an event in the Application event log whenever App1 consumes more than 4 GB of memory.

Solution: You create an event trace data collector. Does this meet the goal?

- A. Yes
- B. No

Answer: B

NEW QUESTION 360

Note: This question is part of a series of questions that present the same scenario. Each question in the series contains a unique solution that might meet the stated goals. Some question sets might have more than one correct solution, while others might not have a correct solution.

After you answer a question in this section, you will NOT be able to return to it. As a result, these questions will not appear in the review screen.

You have a server named Server 1 that runs Windows Server 2016.

You plan to use Windows Server Backup to back up all of the data on Server 1. You create a new volume on Server 1.

You need to ensure that the new volume can be used as a backup target. The backup target must support incremental backups.

Solution: You assign a drive letter to the volume, and you format the volume by using ex FAT. Does this meet the goal?

- A. Yes
- B. No

Answer: B

NEW QUESTION 362

Note: This question is part of a series of questions that present the same scenario. Each question in the series contains a unique solution that might meet the stated goals. Some question sets might have more than one correct solution, while others might not have a correct solution.

After you answer a question in this section, you will NOT be able to return to it. As a result, these questions will not appear in the review screen.

You have a server named Server 1 that runs Windows Server 2016.

You plan to use Windows Server Backup to back up all of the data on Server 1. You create a new volume on Server 1.

You need to ensure that the new volume can be used as a backup target. The backup target must support incremental backups.

Solution: You mount the volume to C:\backup. and you format the volume by using FAT32. Does this meet the goal?

- A. Yes
- B. No

Answer: B

NEW QUESTION 363

Note: This question is part of a Series of questions that use the same or similar answer choices. An answer choice may be correct for more than one question in the series. Each question is Independent of the other questions in this series. Information and details provided in a question apply only to that question.

You have two servers named Server 1 and Server 2 that run Windows Server 2016. Server 1 and server 2 have the Hyper-V server role installed and are nodes in a failover Cluster.

On Server 1, an administrator creates a virtual machine named VM1. You need to configure VM1 for high availability.

Which tool should you use?

- A. the clussvc.exe command
- B. the cluster.exe command
- C. the Computer Management snap-in
- D. the configurehyperv.exe command
- E. the Disk Management snap-in
- F. the Failover Cluster Manager snap-in
- G. the Hyper V Manager snap-in
- H. the Server Manager app

Answer: F

NEW QUESTION 366

You have a Nano Server image named Disk1.vhdx.

You mount Disk1.vhdx.

You need to add a folder that contains several files to the image. Which tool or cmdlet should you use?

- A. File Explorer
- B. Add-Windows Image
- C. Nano Server Image Builder
- D. Server Manager

Answer: D

NEW QUESTION 371

DRAG DROP

Note: This question is part of a series of questions that use the same scenario. For your convenience, the scenario is repeated in each question. Each question presents a different goal and answer choices, but the text of the scenario is exactly the same in each question in this series.

A company named Contoso, Ltd. has several servers that run Windows Server 2016. Contoso has a Hyper-V environment that uses failover clustering and Windows Server Update Services (WSUS). The environment contains several Windows containers and several virtual machines.

The WSUS deployment contains one upstream server that is located on the company's perimeter network and several downstream servers located on the internal network. A firewall separates the upstream server from the downstream servers.

You plan to deploy a human resources application to a new server named HRServer5. HRServer5 contains a FAT32-formatted data volume.

The CIO of Contoso identifies the following requirements for the company's IT department: Deploy a failover cluster to two new virtual machines.

Store all application databases by using Encrypted File System (EFS).

Ensure that each Windows container has a dedicated IP address assigned by a DHCP server.

Produce a report that lists the processor time used by all of the processes on a server named Server1 for five hours.

Encrypt all communication between the internal network and the perimeter network, including all WSUS communications.

Automatically load balance the virtual machines hosted in the Hyper-V cluster when processor utilization exceeds 70 percent.

You need to configure the storage solution for the planned failover cluster.

You create two new generations 2 virtual machines on two separate Hyper-V hosts named VM11 and VM12.

Which three actions should you perform in sequence next? To answer, move the appropriate actions from the list of actions to the answer area and arrange them in the correct order.

Actions

Answer Area

For each virtual machine, create a new system disk that uses the VNDX format and store the disks in Share1.

Create a VHDX file and store the file in the Clustered Shared Volume (CSV).

For each virtual machine, create a new system disk that uses the VHDX format and store the virtual machines on the Cluster Shared Volume (CSV).

Create a network share named Share1.

Create a Clustered Shared Volume (CSV).

To each virtual machine, add the VHDX file as a shared drive.

1

2

3

Answer:

Explanation:

Actions

For each virtual machine, create a new system disk that uses the VNDX format and store the disks in Share1.

Create a network share named Share1.

To each virtual machine, add the VHDX file as a shared drive.

Answer Area

1

Create a Clustered Shared Volume (CSV).

2

For each virtual machine, create a new system disk that uses the VHDX format and store the virtual machines on the Cluster Shared Volume (CSV).

3

Create a VHDX file and store the file in the Clustered Shared Volume (CSV).

NEW QUESTION 375

Note This question is part of a series of questions that use the same scenario. For your convenience, the scenario is repeated in each question. Each question presents a different goal and answer choices, but the text of the scenario is exactly the same in each question in this series.

Start of Repeated Scenario:

A company named Contoso, Ltd. has several servers that run Windows Server 2016 Contoso has a Hyper V environment that uses failover clustering and Windows Server Update Services (WSUS). The environment contains several Windows containers and several virtual machines.

The WSUS deployment contains one upstream server that is located on the company's perimeter network and several downstream servers located on the internal network. A firewall separates the upstream server from the downstream servers.

You plan to deploy a human resources application to a new server named HRServer5. HRServer5 contains a FAT32-formatted data volume.

The CIO of Contoso identifies the following requirements for the company's IT department:

- Deploy failover cluster to two new virtual machines.
- Store all application databases by using Encrypted File System (EFS).
- Ensure that each Windows container has a dedicated IP address assigned by a DHCP server
- Produce a report that lists the processor time used by all of the processes on a server named Server 1 for five hour.

Encrypt all communication between the internal network and the perimeter network, including all WSUS communications.

- Automatically load balance the virtual machines hosted in the Hyper-V cluster when processor utilization exceeds 70 percent.

End of Repeated Scenario.

You need to modify the Hyper V cluster to meet the load balancing requirement for the virtual machine. Which command should you run?

- A. Create a firewall rule 10 allow TCP port 443.
- B. Create a firewall rule to allow TCP port 8531.
- C. Require- SSI Oil the Client WebService virtual directory.
- D. Require SSI on the Inventory virtual directory.

Answer: D

NEW QUESTION 379

Note This question is part of a series of questions that use the same scenario. For your convenience, the scenario is repeated in each question. Each question presents a different goal and answer choices, but the text of the scenario is exactly the same in each question in this series.

Start of Repeated Scenario:

A company named Contoso, Ltd. has several servers that run Windows Server 2016 Contoso has a Hyper V environment that uses failover clustering and Windows Server Update Services (WSUS). The environment contains several Windows containers and several virtual machines.

The WSUS deployment contains one upstream server that is located on the company's perimeter network and several downstream servers located on the internal network. A firewall separates the upstream server from the downstream servers.

You plan to deploy a human resources application to a new server named HRServer5. HRServer5 contains a FAT32-formatted data volume.

The CIO of Contoso identifies the following requirements for the company's IT department:

- Deploy failover cluster to two new virtual machines.
- Store all application databases by using Encrypted File System (EFS).
- Ensure that each Windows container has a dedicated IP address assigned by a DHCP server
- Produce a report that lists the processor time used by all of the processes on a server named Server 1 for five hour.

Encrypt all communication between the internal network and the perimeter network, including all WSUS communications.

- Automatically load balance the virtual machines hosted in the Hyper-V cluster when processor utilization exceeds 70 percent.

End of Repeated Scenario.

You need to modify the Hyper V cluster to meet the load balancing requirement for the virtual machine. Which command should you run?

- A. network address translation (NAT)
- B. I2bridge
- C. I2tunnel
- D. transparent

Answer: A

NEW QUESTION 382

HOTSPOT

You have a server named Server1 that runs Windows Server 2016.

On Server1, you have a custom image of Windows Server 2016 Standard in a file named Image1.wim. The image is mounted to C:\Folder1.

You discover corrupted files in the WinSxS folder of the mounted image.

From the Windows Server 2016 installation media, you mount an image of Windows Server 2016 Standard from Install.wim to C:\Folder2.

You need to repair the corrupted image.

Which command should you run? To answer, select the appropriate options in the answer area. NOTE: Each correct selection is worth one point.

Answer Area

Dism /Cleanup-Image /Image:

▼
C:\Folder1
C:\Folder1\image1.wim
C:\Folder2\install.wim:1
C:\Folder2\Windows

▼
/CheckIntegrity
/RestoreHealth
/ScanHealth
/StartComponentCleanup

/Source:

▼
C:\Folder1
C:\Folder1\image1.wim
C:\Folder2\install.wim:1
C:\Folder2\Windows

Answer:

Explanation:

References: <https://docs.microsoft.com/en-us/windows-hardware/manufacture/desktop/repair-a-windows-image>

NEW QUESTION 383

HOTSPOT

You have two Hyper-V hosts named Server1 and Server2 that run Windows Server 2016. Server1 and Server2 connect to the same network.

Server1 and Server2 have virtual switches configured as shown in the following table.

Switch name	Host	Type	VLAN ID
Switch1	Server1	External	2
Switch2	Server2	External	4
Switch3	Server2	Internal	<i>Not applicable</i>

You have nine virtual machines configured as shown in the following table.

Virtual machine name	Connected to	VLAN ID
VM1	Switch1	2
VM2	Switch1	<i>Not applicable</i>
VM3	Switch1	4
VM4	Switch2	2
VM5	Switch2	<i>Not applicable</i>
VM6	Switch2	4
VM7	Switch3	2
VM8	Switch3	<i>Not applicable</i>
VM9	Switch3	4

All of the virtual machines are configured to have IP addresses from the same network segment. The firewall on each of the virtual machines is configured to allow network connectivity.

To which virtual machines can you connect from VM1 and VM2? To answer, select the appropriate options in the answer area.

Answer Area

Virtual machines to which you can connect from VM1:

▼

VM4 only
VM4 and VM7
VM2, VM4, and VM5
None

Virtual machines to which you can connect from VM2:

▼

VM5 only
VM1 and VM3
VM5 and VM8
VM5, VM7, VM8, and VM9
None

Answer:

Explanation:

Answer Area

Virtual machines to which you can connect from VM1:

▼

VM4 only
VM4 and VM7
VM2, VM4, and VM5
None

Virtual machines to which you can connect from VM2:

▼

VM5 only
VM1 and VM3
VM5 and VM8
VM5, VM7, VM8, and VM9
None

NEW QUESTION 387

Note: This question is part of a series questions that present the same scenario, Each question in the series contains a unique solution that might meet the stated goals. Some question sets might have more than one correct solution, while others might not have a correct solution.

After you answer a question in this section, you will NOT be able to return to it. As a result, these questions will not appear in the review screen.

You have a server named Server1 that runs Windows Server 2016. Server1 is a Docker Host.

You are creating a Dockerfile to build 3 Docker image.

You need to add a file named File1.txt from Server to, C:\folder\ in the Docker image.

What are two possible commands that you can use to achieve the goal/ Each correct answer presents a complete solution.
NOTE: Each correct selection is worth one point.

- A. COPY file1.txt c:/folder1/
- B. copy-item file1.txt folder1\file1.txt
- C. ROBOCOPY file.txt \folder1\
- D. XCOPY file1.txt c:\folder1\
- E. ADD file1.txt /folder1/

Answer: AE

NEW QUESTION 389

You have two servers named Server1 and Server 2 that run Windows Server 2016.
Server 1 and Server 2 are nodes in a Network Load Balancing (NLB) cluster. The Web Sever server role is installed on each node.
Users report that when they submit web form data, sometimes the data is not stored, and they must full in the form again.
You need to resolve the issue. The solution must ensure that connections are load balanced between Server 1 Server 2.
What should you do in the NLB cluster?

- A. Modify the existing port rules.
- B. Modify the Cluster operation mode.
- C. Add the Microsoft Load Balancing/Failover Provider service to all of the network adapters.
- D. Add an IP address.

Answer: B

NEW QUESTION 393

DRAG DROP

You have a server named Server1 that runs Windows Server 2016.
You open a command prompt on Server1 and run the following commands.

```
C:\>diskpart
```

```
Microsoft DiskPart version 10.0.14393.0
```

```
Copyright (c) 1999-2013 Microsoft Corporation.  
On computer: SERVER1
```

```
DISKPART> list disk
```

```
Disk ### Status Size Free Dyn Gpt  
-----  
Disk 0 Online 127 GB 0 B  
Disk 1 Online 1800 GB 0 B
```

```
DISKPART> select disk 1
```

```
Disk 1 is now the selected disk.
```

```
DISKPART> list partition
```

```
Partition ### Type Size Offset  
-----  
Partition 1 Primary 1799 GB 1024 KB
```

You back up the data on Disk 1.
You plan to convert Disk 1 to a GPT disk, and then to restore the data to Disk 1.
Which four DiskPart commands should you run in sequence before you restore the data? To answer, move the appropriate commands from the list of commands to the answer area and arrange them in the correct order.

Commands	Answer Area
<code>convert dynamic</code>	
<code>select disk 1</code>	
<code>format fs=ntfs</code>	
<code>create partition logical</code>	
<code>create partition primary</code>	
<code>convert gpt</code>	
<code>clean</code>	

⏪
⏩
⏴
⏵

Answer:

Explanation: References: <https://www.remotesoftware.com/info/convert-gpt-mbr-without-data-loss> <https://docs.microsoft.com/en-us/windows-server/administration/windows-commands/create-partition-primary>

NEW QUESTION 397

You have two Hyper-V hosts named Server1 and Server2 that run Windows Server 2016. The hosts are nodes in failover cluster. A highly available virtual machine named VM1 is running on Server1. You need to move VM1 to Server2 while minimizing downtime. What should you do?

- A. From Windows PowerShell, run Move-ClusterGroup
- B. From Hyper-V Manager, use the Move action.
- C. From Failover Cluster Manager, use the Move Virtual Machine Storage option.
- D. From Windows PowerShell, run Move-VM.

Answer: A

NEW QUESTION 402

You have a server named Server1 that is an iSCSI target. You have a server named Server2 that runs Windows Server 2016. Server2 has an iSCSI disk named Disk1 that is hosted on Server1. Disk1 contains one volume that is assigned a drive letter of E. You need to increase the size of Disk1. What should you do?

- A. Run the Resize-IscsiVirtualDisk cmdlet and specify the -ComputerName Server2 parameter.
- B. Run the Resize-IscsiVirtualDisk cmdlet and specify the -ComputerName Server1 parameter.
- C. Run the Resize-Partition cmdlet and specify the -ComputerName Server1 parameter.
- D. Run the Resize-Partition cmdlet and specify the -ComputerName Server2 parameter.

Answer: B

Explanation: The Resize-IscsiVirtualDisk cmdlet resizes a virtual disk either by expanding or compacting an existing virtual disk. The -ComputerName parameter specifies the computer name, or IP address, of the remote computer, if this cmdlet is run on a remote computer. If you do not specify a value for this parameter, the cmdlet uses the local computer.

NEW QUESTION 404

Your network contains an Active Directory domain named adatum.com. The domain contains Network load Balancing (NLB) cluster as shown in the exhibit. (Click the Exhibit button.) Which hosts will respond to requests sent to nlb.adatum.com?

Network Load Balancing Manager

File Cluster Host Options Help

Network Load Balancing Cluster

NLB.Adatum.com (192.168.10.50)

SERVER1 (Ethernet 2)
 SERVER2 (Ethernet 2)
 SERVER3 (Ethernet 2)

Host configuration information for hosts in cluster NLB.Adatum.com

Host (interface)	Status	Dedicated IP...	Dedic
SERVER1 (Ethernet 2)	Suspended	192.168.10.1	255.255
SERVER2 (Ethernet 2)	Converged	192.168.10.2	255.255
SERVER3 (Ethernet 2)	Stopped	192.168.10.3	255.255

Log En...

Date

Time

Cluster

Host

Description

0040

7/8/2017

2:07:53 AM

192.168.10...

SERVER2

End configuration change

00401

7/8/2017

2:07:53 AM

192.168.10...

SERVER1

Update 6 succeeded [double click

0042

7/8/2017

2:07:53 AM

192.168.10...

SERVER1

End configuration change

- A. Server1 only
- B. Server2 only
- C. Server1 an Server2 only
- D. Server1 ,Server2

Answer: B

NEW QUESTION 406

HOTSPOT

You deploy a new Hyper-V host named Server1 that runs Windows Server 2016. You implement receive side scaling (RSS) on Server1. The chipset on Server1 does not support NetDMA. All of the equipment on your network supports 10-Gbps connectivity. On Server1, you deploy a virtual machine named VM1. You configure VM1 to aggregate all of the Windows and non-Windows log files for all of the servers on the network. VM1 has four virtual processors. You discover that VM1 drops packets. Which two options should you run? To answer, select the appropriate options in the answer area.

Answer Area

First action:

Enable TCP Chimney Offload on Server1.

Enable single root I/O virtualization (SR-IOV) on VM1.

Enable virtual machine queue (VMQ) on Server1 and VM1.

Second action:

Enable virtual TCP Chimney Offload on VM1.

Enable virtual Receive-side Scalling (vRSS) on VM1.

Enable single root I/O virtualization (SR-IOV) on Server1.

Answer:

Explanation:

Answer Area

First action:

Enable TCP Chimney Offload on Server1.

Enable single root I/O virtualization (SR-IOV) on VM1.

Enable virtual machine queue (VMQ) on Server1 and VM1.

Second action:

Enable virtual TCP Chimney Offload on VM1.

Enable virtual Receive-side Scalling (vRSS) on VM1.

Enable single root I/O virtualization (SR-IOV) on Server1.

NEW QUESTION 411

HOTSPOT

You have a server named Server1 that runs Windows Servers 2016. Server1 has a storage array that contains multiple storage enclosures. The storage hardware supports enclosure awareness.

You need to implement Storage Spaces on Server1. Storage Spaces must remain available if two enclosures fail. The solution must minimize the number of enclosures required and must provide the fastest possible write performance.

Which configurations should you use? To answer, select the appropriate options in the answer area. NOTE: Each correct selection is worth one point.

Answer Area

Resiliency type:

	▼
Dual parity	
Single parity	
Three-way mirror	
Two-way mirror	

Number of enclosures:

	▼
3	
4	
5	
6	

Answer:

Explanation: References: <https://docs.microsoft.com/en-us/windows-server/storage/storage-spaces/storage-spaces-fault-tolerance#summary>

NEW QUESTION 413

.....

Thank You for Trying Our Product

* 100% Pass or Money Back

All our products come with a 90-day Money Back Guarantee.

* One year free update

You can enjoy free update one year. 24x7 online support.

* Trusted by Millions

We currently serve more than 30,000,000 customers.

* Shop Securely

All transactions are protected by VeriSign!

100% Pass Your 70-740 Exam with Our Prep Materials Via below:

<https://www.certleader.com/70-740-dumps.html>